

---

# R 945 Litronic

---

## LIEBHERR

Crawler excavator

**Generation**

8

**Operating weight**

41,400–48,250 kg

**Engine**

220 kW / 299 HP  
Stage V

**Bucket capacity**

2.00–3.00 m<sup>3</sup>



# Experience the progress

## R 945

---

### ① Safety

- Panoramic visibility with no obstructions and camera on the rear and the right side
- Tilttable console for easy and safe access to cab
- Rollover-resistant ROPS-certified cab structure
- Emergency exit via the rear cab window whatever the configuration of the excavator
- Right window and windshield in laminated and tinted glass

### ② Equipment

- Large choice of types and lengths of equipment
- Safety check valves for hoist and stick cylinders (option)
- Longer lifespan of components and higher productivity thanks to automatic centralised lubrication system

### ③ Maintenance

- Innovative servicing concept, with service points accessible from ground level
- Lateral access to uppercarriage and large maintenance platform
- Engine oil, hydraulic oil, fuel and urea levels visible on the display

### ④ Comfort

- Spacious, air-conditioned work space
- Pneumatic seat with vertical and horizontal suspension
- Easy-to-use high resolution 9" colour touchscreen
- Completely retractable front cab window
- LED lighting as standard



## ⑤ Engine

- Liebherr engine that conforms with the Stage V European exhaust emissions standard
- Automatic engine idling and engine stop

## ⑥ Undercarriage

- Choice of a robust X-shaped undercarriage and a variable track undercarriage with integrated eyes for secure transport
- Easy maintenance
- Maintenance-free track chains and track rollers with lifetime lubrication



# Technical data



## Engine

<b>Rating per ISO 9249</b>	220kW (299 HP) at 1,800RPM
<b>Torque</b>	1,421 Nm at 1,350RPM
<b>Model</b>	Liebherr D944 A7-25
<b>Type</b>	4 cylinder in-line
<b>Bore</b>	130 mm
<b>Stroke</b>	150 mm
<b>Displacement</b>	8.0l
<b>Engine operation</b>	4-stroke diesel Common-Rail Turbo-charged and after-cooler
<b>Exhaust gas treatment</b>	Stage V DOC + SCR Filter Passive regeneration by thermo management
<b>Cooling system</b>	Water-cooled and oil cooler, after-cooled and fuel cooled
<b>Air cleaner</b>	Dry-type air cleaner with pre-cleaner
<b>Fuel tank</b>	729 l
<b>Urea tank</b>	90 l
<b>Electrical system</b>	
<b>Voltage</b>	24 V
<b>Batteries</b>	2 x 135 Ah / 12 V
<b>Alternator</b>	Three-phase current 28 V / 140 A
<b>Engine idling</b>	Sensor controlled



## Hydraulic controls

<b>Power distribution</b>	Via control valves, simultaneous and independent actuation of undercarriage, swing drive and equipment
<b>Electric servo circuit</b>	Electro-hydraulic control
<b>Equipment and swing</b>	Proportional via joystick levers
<b>Travel</b>	- Proportional control via foot pedals or removable levers - Automatic or manual speed adjustment
<b>Additional functions</b>	Proportional regulation via foot pedals or mini-joystick



## Hydraulic system

<b>Hydraulic system</b>	Positive Control hydraulic system. Demand-based, double independent pump flows Features high system dynamics and sensitivity provided by integrated system controlling Independent circuit for rotation
<b>Hydraulic pumps</b>	
<b>For equipment and travel drive</b>	Liebherr, variable displacement, swashplate double pump
<b>Max. flow</b>	2 x 315 l/min.
<b>Max. pressure</b>	380 bar
<b>For swing drive</b>	Swashplate pump, closed-loop circuit
<b>Max. flow</b>	205 l/min.
<b>Max. pressure</b>	400 bar
<b>Pump management</b>	Electronic management synchronous to the control block
<b>Hydraulic tank</b>	239 l
<b>Hydraulic system</b>	max. 475 l
<b>Filtration</b>	1 main return filter with integrated partial micro filtration (10 µm)
<b>Cooling system</b>	Compact cooler, consisting of a water cooler, with hydraulic oil cooler, gearbox oil cooler, fuel cooler and after-cooler cores and hydrostatically driven fan
<b>MODE selection</b>	Adjustment of engine and hydraulic performance via a mode pre-selector to match application, e.g. for especially economical and environmentally friendly operation or for maximum digging performance and heavy-duty jobs
<b>Engine speed and performance setting</b>	Stepless adjustment of engine output and hydraulic power via engine speed



## Swing drive

<b>Drive</b>	Liebherr swashplate motor with integrated brake valve and torque control
<b>Transmission</b>	Liebherr compact planetary reduction gears
<b>Swing ring</b>	Liebherr, sealed race ball bearing swing ring, internal teeth
<b>Swing speed</b>	0-8.6 RPM stepless
<b>Swing torque</b>	117 kNm
<b>Holding brake</b>	Wet multi-disc (spring applied, pressure released)



## Cab

<b>Cab</b>	ROPS safety cab structure (roll-over protection system according to ISO 12117-2:2008) with windscreen, totally or partially retractable (only upper part), under cab roof, LED headlights integrated in the ceiling, a door with a sliding window (can be opened on both sides), large storing box and several stowing possibilities, shock-absorbing suspension, laminated right hand side and roof windows, all windows tinted, separate extensible window shades for the sunroof window and windscreen, cigarette lighter and 24 V plug, 12V plug, cup holder, mobile phone storage net
<b>Operator's seat</b>	Liebherr-Comfort seat, airsprung with automatic weight adjustment, vertical and longitudinal seat damping including consoles and joysticks. Seat and armrests adjustable separately and in combination (adjustable in length, height and inclination), seat heating as standard Oscillating consoles with seat, tiltable console left
<b>Arm consoles</b>	
<b>Operation and displays</b>	Large high-resolution operating unit, intuitive, colour display with touchscreen, video-compatible, numerous setting, control and monitoring options, e.g. air conditioning control, fuel consumption, machine and attachment parameters
<b>Air-conditioning</b>	Automatic air-conditioning, recirculated air function, fast de-icing and demisting at the press of a button, air vents can be operated via a menu. Recirculated air and fresh air filters can be easily replaced and are accessible from the outside. Heating-cooling unit, designed for extreme outside temperatures, sensors for solar radiation, inside and outside temperatures The air conditioning system contains fluorinated greenhouse gases
Refrigerant	R134a
Global warming potential	1,430
Quantity at 25 °C*	1,260 g
CO <sub>2</sub> equivalent	1.80 t
<b>Vibration emission**</b>	
Hand / arm vibrations	< 2.5 m/s <sup>2</sup> , according with ISO 5349-1:2001
Whole-body vibrations	< 0.5 m/s <sup>2</sup>
Measuring inaccuracy	According with standard EN 12096:1997
<b>Noise emission</b>	
ISO 6396	72 dB(A) = L <sub>pA</sub> (inside cab)
2000/14/EC	105 dB(A) = L <sub>WA</sub> (surround noise)



## Undercarriage

<b>Versions</b>	
S-HD	Gauge 2,890 mm
LC-V	Gauge 2,390 mm / 2,890 mm
<b>Drive</b>	Liebherr swashplate motor with brake valves on both sides
<b>Transmission</b>	Liebherr planetary reduction gear
<b>Maximum travel speed</b>	2.9 km/h low range 4.6 km/h high range
<b>Drawbar pull on crawler</b>	363 kN
<b>Track components</b>	D7G, maintenance-free
<b>Track rollers / Carrier rollers</b>	10 / 2 (S-HD) 10 / 3 (LC-V)
<b>Tracks</b>	Sealed and greased
<b>Track pads</b>	Triple grouser
<b>Holding brake</b>	Wet multi-disc (spring applied, pressure released)
<b>Brake valves</b>	Integrated into travel motor
<b>Lashing eyes</b>	Integrated



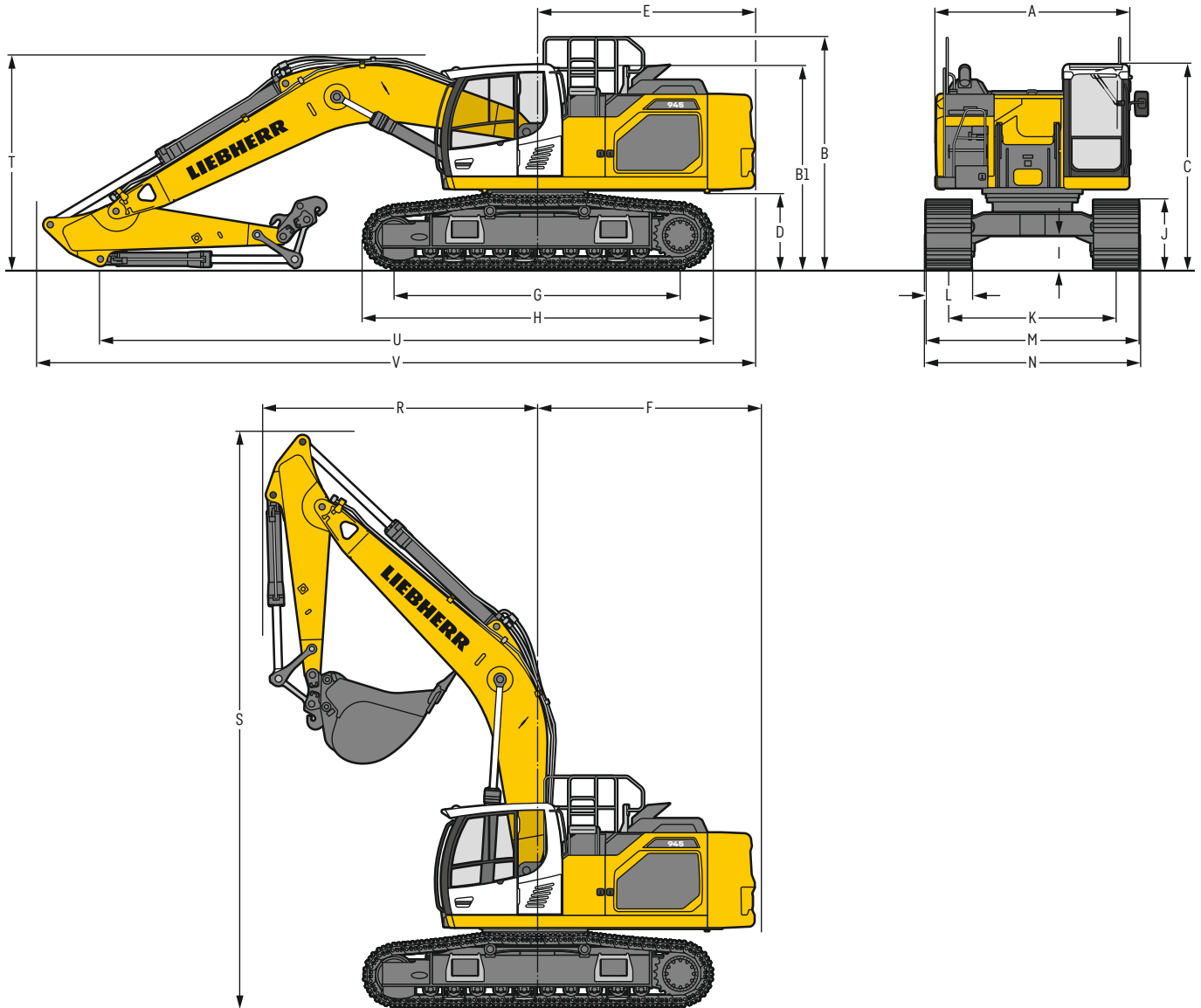
## Equipment

<b>Type</b>	Combination of resistant steel plates and cast steel components
<b>Hydraulic cylinders</b>	Liebherr cylinders with seal and guidance systems
<b>Bearings</b>	Sealed, low maintenance
<b>Lubrication</b>	Liebherr central lubrication system
<b>Hydraulic connections</b>	Pipes and hoses equipped with SAE split-flange connections
<b>Buckets</b>	Standard equipped with Liebherr tooth system

\* Valid for standard machine without operator's cab elevation and without height adjustable cab

\*\* For the risk assessment according to 2002/44/EC see ISO/TR 25398:2006

# Dimensions



	S-HD	mm			LC-V	mm		
A	Uppercarriage width	2,990 <sup>2)</sup>			2,990 <sup>2)</sup>			
B	Uppercarriage height	3,635			3,760			
B1	Uppercarriage height (handrails folded)	3,195			3,320			
C	Cab height	3,215			3,340			
D	Counterweight ground clearance	1,240			1,365			
E	Rear-end length	3,350			3,350			
F	Tail swing radius	3,450			3,450			
G	Wheelbase	4,400			4,400			
H	Undercarriage length	5,365			5,350			
I	Undercarriage ground clearance	550			740			
J	Track height	1,145			1,185			
K	Track gauge	2,890			2,390/2,890 <sup>3)</sup>			
L	Track pad width	600	750	900	600	750	900	
M	Width over tracks	3,490	3,640	3,790	2,990/3,490 <sup>3)</sup>	3,140/3,640 <sup>3)</sup>	3,290/3,790 <sup>3)</sup>	
N	Width over steps	3,695 <sup>1)</sup>	3,695 <sup>1)</sup>	3,845 <sup>1)</sup>	3,200/3,700 <sup>1) 3)</sup>	3,200/3,700 <sup>1) 3)</sup>	3,200/3,700 <sup>1) 3)</sup>	

<sup>1)</sup> width with removable steps

<sup>2)</sup> without door stop device and spacer

<sup>3)</sup> work position

		Stick length	Mono boom 6.45 m with quick coupler			Mono boom straight 7.00 m with quick coupler			Two-piece boom 6.70 m with quick coupler			Mono boom SME 6.15 m with quick coupler			Mono boom SME 6.45 m with quick coupler		
			m	mm		mm		mm		mm		mm		mm			
				S-HD	LC-V	S-HD	LC-V	S-HD	LC-V	S-HD	LC-V	S-HD	LC-V	S-HD	LC-V		
<b>R</b>	Front swing radius	2.60	4,250		3,650		2,900		-		-		-				
		2.90	4,250		3,650		3,000		-		-		-				
		3.25	4,250		3,650		3,100		-		-		-				
		3.95	4,250		3,500		3,100		-		-		-				
		2.15 SME	-		-		-		-		4,050		4,250				
		2.60 SME	-		-		-		-		4,050		4,250				
<b>S</b>	Height with boom up		8,950	9,050	10,050	10,150	10,000	10,100	8,750	8,850	8,950	9,050					
<b>T</b>	Boom height	2.60	3,350	3,400	3,200	3,250	3,050	3,050	-		-		-				
		2.90	3,350	3,450	3,250	3,300	3,150	3,150	-		-		-				
		3.25	3,350	3,450	3,350	3,400	3,300	3,300	-		-		-				
		3.95	3,400	3,450	3,450	3,500	3,200	3,200	-		-		-				
		2.15 SME	-		-		-		-		3,550	3,600	3,500	3,550			
		2.60 SME	-		-		-		-		3,350 <sup>1)</sup>	3,400 <sup>1)</sup>	3,300 <sup>1)</sup>	3,350 <sup>1)</sup>			
<b>U</b>	Length on ground	2.60	9,450	9,400	7,350	7,350	7,050	7,000	-		-		-				
		2.90	9,150	9,100	7,100	7,100	6,800	6,750	-		-		-				
		3.25	8,850	8,800	6,850	6,850	8,900	8,850	-		-		-				
		3.95	8,050	8,000	6,150	6,100	8,300	8,250	-		-		-				
		2.15 SME	-		-		-		-		7,050	6,850	7,400				
		2.60 SME	-		-		-		-		9,550 <sup>1)</sup>	9,500 <sup>1)</sup>	7,800 <sup>1)</sup>				
<b>V</b>	Overall length	2.60	11,000		11,800		11,450		-		-		-				
		2.90	11,000		11,800		11,450		-		-		-				
		3.25	11,000		11,800		11,200		-		-		-				
		3.95	11,000		11,800		11,200		-		-		-				
		2.15 SME	-		-		-		-		10,900	10,800 <sup>1)</sup>	11,200	11,100 <sup>1)</sup>			
		2.60 SME	-		-		-		-		10,900	10,800 <sup>1)</sup>	11,200	11,100 <sup>1)</sup>			
	Bucket		2.00 m <sup>3</sup>		1.50 m <sup>3</sup>		1.75 m <sup>3</sup>		2.50 m <sup>3</sup>		2.25 m <sup>3</sup>						

<sup>1)</sup> without bucket

## Transport dimensions

### removable elements disassembled

	Undercarriage	Mono boom 6.45 m			Mono boom straight 7.00 m			Two-piece boom 6.70 m			Mono boom SME 6.15 m			Mono boom SME 6.45 m		
		mm			mm			mm			mm			mm		
Pad width		600	750	900	600	750	900	600	750	900	600	750	900	600	750	900
Transport width	S-HD	3,490	3,640	3,790	3,490	3,640	3,790	3,490	3,640	3,790	3,490	3,640	3,790	3,490	3,640	3,790
	LC-V	2,990	3,140	3,290	2,990	3,140	3,290	2,990	3,140	3,290	2,990	3,140	3,290	2,990	3,140	3,290
	Undercarriage / Stick m	S-HD		LC-V	S-HD		LC-V	S-HD		LC-V	S-HD		LC-V	S-HD		LC-V
		mm		mm	mm		mm	mm		mm	mm		mm	mm		mm
Transport length		11,000			11,800			11,200 <sup>3)</sup> / 11,450 <sup>2)</sup>			10,900 / 10,800 <sup>1)</sup>			11,200 / 11,100 <sup>1)</sup>		
Transport height	2.60	3,350	3,400		3,340		3,340		-		-		-		-	
	2.90	3,350	3,450		3,340		3,340		-		-		-		-	
	3.25	3,350	3,450		3,350	3,400		3,340		-		-		-		-
	3.95	3,400	3,450		3,450	3,500		3,340		-		-		-		-
	2.15 SME	-			-			-			3,550	3,600	3,500	3,550		
	2.60 SME	-			-			-			3,350 <sup>1)</sup>	3,400 <sup>1)</sup>	3,300 <sup>1)</sup>	3,350 <sup>1)</sup>		
		-			-			-			3,900	3,950	3,700	3,750		
		-			-			-			3,350 <sup>1)</sup>	3,450 <sup>1)</sup>	3,350 <sup>1)</sup>	3,400 <sup>1)</sup>		

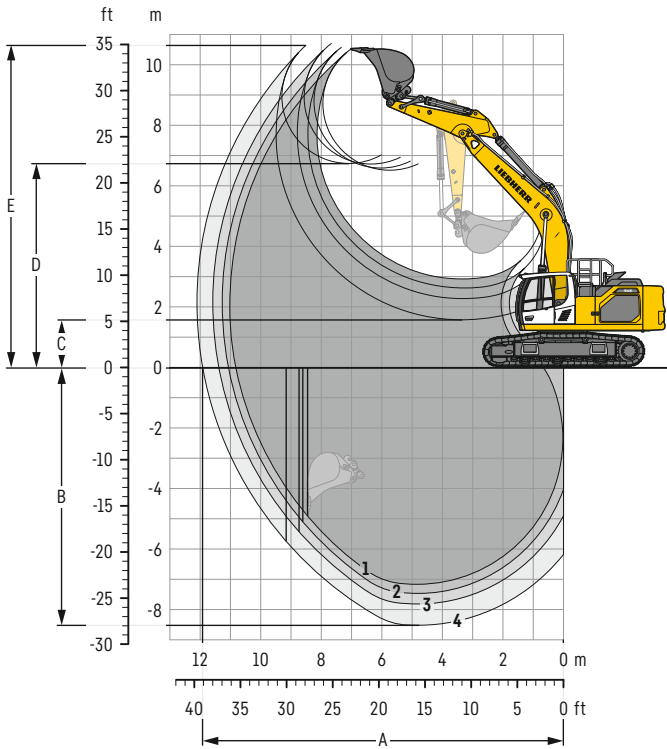
<sup>1)</sup> without bucket

<sup>2)</sup> with sticks 2.60 m and 2.90 m

<sup>3)</sup> with sticks 3.25 m and 3.95 m

# Backhoe bucket

with mono boom 6.45 m



## Digging envelope

with quick coupler		1	2	3	4
Stick length	m	2.60	2.90	3.25	3.95
A Max. reach at ground level	m	10.82	11.07	11.39	11.92
B Max. digging depth	m	7.17	7.47	7.82	8.52
C Min. dumping height	m	2.92	2.62	2.27	1.57
D Max. dumping height	m	6.51	6.59	6.72	6.73
E Max. cutting height	m	10.51	10.57	10.70	10.63

## Forces

without quick coupler		1	2	3	4
Stick digging force (ISO 6015)	kN	212	198	183	159
Bucket digging force (ISO 6015)	kN	238	238	238	238
Stick digging force (SAE J1179)	kN	202	189	176	154
Bucket digging force (SAE J1179)	kN	210	210	210	210

## Operating weight and ground pressure

The operating weight includes the basic machine with counterweight 8.4t, mono boom 6.45 m, stick 3.25 m, quick coupler SWA 66 (430 kg) and bucket 2.00 m<sup>3</sup> (1,690 kg).

Undercarriage		S-HD		
Pad width	mm	600	750	900
Weight	kg	41,600	42,850	43,700
Ground pressure	kg/cm <sup>2</sup>	0.73	0.60	0.51

Undercarriage		LC-V		
Pad width	mm	600	750	900
Weight	kg	44,000	45,250	46,100
Ground pressure	kg/cm <sup>2</sup>	0.77	0.64	0.54

The operating weight includes the basic machine with counterweight 9.4t, mono boom 6.45 m, stick 3.25 m, quick coupler SWA 66 (430 kg) and bucket 2.00 m<sup>3</sup> (1,690 kg).

Undercarriage		S-HD		
Pad width	mm	600	750	900
Weight	kg	42,600	43,850	44,700
Ground pressure	kg/cm <sup>2</sup>	0.75	0.62	0.52

Undercarriage		LC-V		
Pad width	mm	600	750	900
Weight	kg	45,000	46,250	47,100
Ground pressure	kg/cm <sup>2</sup>	0.79	0.65	0.55

**Buckets** Machine stability per ISO 10567\* (75% of tipping capacity)

Cutting width mm	Capacity ISO 7451 m <sup>3</sup>	Weight <sup>3)</sup> kg	Weight <sup>4)</sup> kg	S-HD undercarriage (with track pads 600 mm)								LC-V undercarriage (with track pads 600 mm)								
				Stick length (m)				Stick length (m)				Stick length (m)				Stick length (m)				
				without quick coupler		with quick coupler		without quick coupler		with quick coupler		without quick coupler		with quick coupler		without quick coupler		with quick coupler		
2.60	2.90	3.25	3.95	2.60	2.90	3.25	3.95	2.60	2.90	3.25	3.95	2.60	2.90	3.25	3.95					
<b>with counterweight 8.4 t</b>																				
STD <sup>1)</sup>	1,650	2.00	1,730	1,690	▲	▲	▲	▲	▲	▲	▲	▲	▲	▲	▲	▲	▲	▲	▲	▲
	1,600	2.15	1,770	1,730	▲	▲	▲	▲	▲	▲	▲	▲	▲	▲	▲	▲	▲	▲	▲	▲
	1,650	2.25	1,810	1,770	▲	▲	▲	■	▲	▲	▲	▲	▲	▲	▲	▲	▲	▲	▲	▲
	1,800	2.50	1,900	1,860	▲	▲	■	▲	▲	▲	■	▲	▲	▲	▲	■	▲	▲	▲	■
	1,800	2.75	1,970	1,930	▲	■	▲	■	▲	■	▲	■	▲	▲	■	▲	▲	▲	■	▲
1,850	3.00	2,020	1,980	■	▲	■	△	■	▲	■	△	▲	■	▲	■	■	■	▲	■	
HD <sup>2)</sup>	1,650	2.00	1,830	1,790	▲	▲	▲	▲	▲	▲	▲	▲	▲	▲	▲	▲	▲	▲	▲	▲
	1,600	2.15	1,870	1,830	▲	▲	▲	▲	▲	▲	▲	■	▲	▲	▲	▲	▲	▲	▲	▲
	1,650	2.25	1,910	1,870	▲	▲	▲	■	▲	▲	▲	▲	▲	▲	▲	▲	▲	▲	▲	▲
	1,800	2.50	2,000	1,960	▲	▲	■	▲	▲	▲	■	▲	▲	▲	▲	■	▲	▲	▲	■
	1,800	2.75	2,080	2,040	▲	■	▲	▲	■	■	▲	△	▲	▲	■	▲	▲	▲	■	■
1,850	3.00	2,130	2,090	■	▲	■	△	■	▲	■	△	■	■	▲	■	■	■	▲	△	
<b>with counterweight 9.4 t</b>																				
STD <sup>1)</sup>	1,650	2.00	1,730	1,690	▲	▲	▲	▲	▲	▲	▲	▲	▲	▲	▲	▲	▲	▲	▲	▲
	1,600	2.15	1,770	1,730	▲	▲	▲	▲	▲	▲	▲	▲	▲	▲	▲	▲	▲	▲	▲	▲
	1,650	2.25	1,810	1,770	▲	▲	▲	▲	▲	▲	▲	▲	▲	▲	▲	▲	▲	▲	▲	▲
	1,800	2.50	1,900	1,860	▲	▲	▲	■	▲	▲	▲	■	▲	▲	▲	▲	▲	▲	▲	▲
	1,800	2.75	1,970	1,930	▲	▲	■	▲	▲	▲	■	▲	▲	▲	▲	■	▲	▲	▲	■
1,850	3.00	2,020	1,980	▲	■	▲	■	▲	■	▲	■	▲	▲	■	▲	▲	▲	■	▲	
HD <sup>2)</sup>	1,650	2.00	1,830	1,790	▲	▲	▲	▲	▲	▲	▲	▲	▲	▲	▲	▲	▲	▲	▲	▲
	1,600	2.15	1,870	1,830	▲	▲	▲	▲	▲	▲	▲	▲	▲	▲	▲	▲	▲	▲	▲	▲
	1,650	2.25	1,910	1,870	▲	▲	▲	▲	▲	▲	▲	▲	▲	▲	▲	▲	▲	▲	▲	▲
	1,800	2.50	2,000	1,960	▲	▲	▲	■	▲	▲	▲	■	▲	▲	▲	▲	▲	▲	▲	■
	1,800	2.75	2,080	2,040	▲	▲	■	▲	▲	▲	■	▲	▲	▲	▲	■	▲	▲	▲	▲
1,850	3.00	2,130	2,090	▲	■	▲	■	■	■	▲	■	▲	▲	■	▲	▲	▲	■	■	

\* Indicated loads are based on ISO 10567, at maximum reach, and may be swung 360° on firm and even ground

<sup>1)</sup> Standard bucket with teeth Z 50

<sup>2)</sup> HD bucket with teeth Z 50

<sup>3)</sup> Bucket for direct mounting

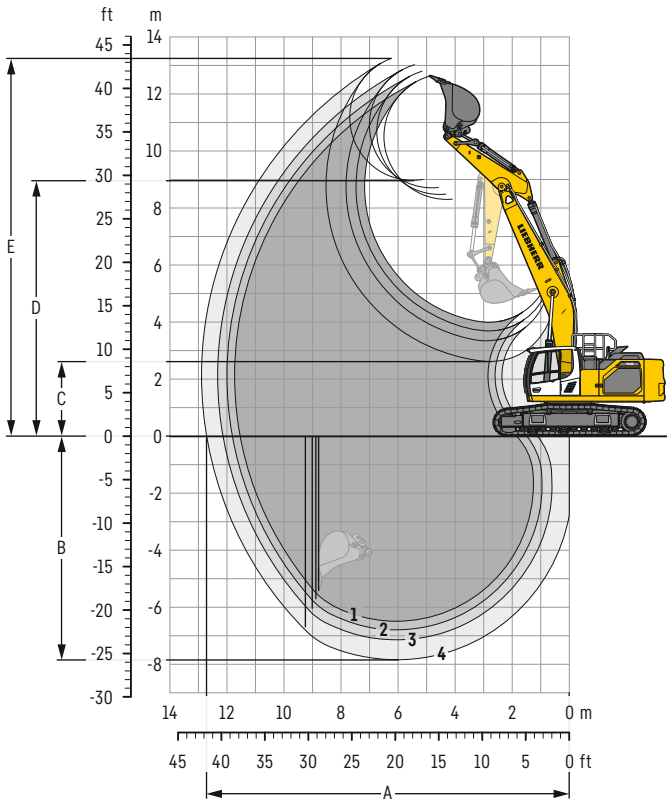
<sup>4)</sup> Bucket for mounting to quick coupler SWA 66 (430 kg)

Other buckets available upon request

Max. material weight ▲ = ≤ 2.0t/m<sup>3</sup>, ■ = ≤ 1.8t/m<sup>3</sup>, ▲ = ≤ 1.65t/m<sup>3</sup>, ■ = ≤ 1.5t/m<sup>3</sup>, △ = ≤ 1.2t/m<sup>3</sup>

# Backhoe bucket

with mono boom straight 7.00 m



## Digging envelope

with quick coupler		1	2	3	4
Stick length	m	2.60	2.90	3.25	3.95
A Max. reach at ground level	m	11.54	11.81	12.14	12.72
B Max. digging depth	m	6.49	6.79	7.14	7.84
C Min. dumping height	m	4.00	3.69	3.34	2.63
D Max. dumping height	m	8.30	8.47	8.70	8.97
E Max. cutting height	m	12.63	12.79	13.02	13.25

## Forces

without quick coupler		1	2	3	4
Stick digging force (ISO 6015)	kN	212	198	183	159
Bucket digging force (ISO 6015)	kN	238	238	238	238
Stick digging force (SAE J1179)	kN	202	189	176	154
Bucket digging force (SAE J1179)	kN	210	210	210	210

## Operating weight and ground pressure

The operating weight includes the basic machine with counterweight 8.4t, mono boom straight 7.00m, stick 3.25m, quick coupler SWA 66 (430 kg) and bucket 1.50 m<sup>3</sup> (1,490 kg).

Undercarriage		S-HD		
Pad width	mm	600	750	900
Weight	kg	41,500	42,750	43,600
Ground pressure	kg/cm <sup>2</sup>	0.73	0.60	0.51

Undercarriage		LC-V		
Pad width	mm	600	750	900
Weight	kg	43,900	45,150	46,000
Ground pressure	kg/cm <sup>2</sup>	0.77	0.64	0.54

The operating weight includes the basic machine with counterweight 9.4t, mono boom straight 7.00m, stick 3.25m, quick coupler SWA 66 (430 kg) and bucket 1.50 m<sup>3</sup> (1,490 kg).

Undercarriage		S-HD		
Pad width	mm	600	750	900
Weight	kg	42,500	43,750	44,600
Ground pressure	kg/cm <sup>2</sup>	0.75	0.62	0.52

Undercarriage		LC-V		
Pad width	mm	600	750	900
Weight	kg	44,900	46,150	47,000
Ground pressure	kg/cm <sup>2</sup>	0.79	0.65	0.55

**Buckets** Machine stability per ISO 10567\* (75% of tipping capacity)

Cutting width mm	Capacity ISO 7451 m <sup>3</sup>	Weight <sup>3)</sup> kg	Weight <sup>4)</sup> kg	S-HD undercarriage (with track pads 600 mm)								LC-V undercarriage (with track pads 600 mm)								
				Stick length (m)				Stick length (m)				Stick length (m)				Stick length (m)				
				without quick coupler		with quick coupler		without quick coupler		with quick coupler		without quick coupler		with quick coupler		without quick coupler		with quick coupler		
2.60	2.90	3.25	3.95	2.60	2.90	3.25	3.95	2.60	2.90	3.25	3.95	2.60	2.90	3.25	3.95					
<b>with counterweight 8.4 t</b>																				
STD <sup>1)</sup>	1,650	2.00	1,730	1,690	▲	▲	▲	■	▲	▲	■	▲	▲	▲	▲	■	▲	▲	▲	■
	1,600	2.15	1,770	1,730	▲	▲	■	▲	▲	▲	■	■	▲	▲	▲	■	▲	▲	▲	▲
	1,650	2.25	1,810	1,770	▲	■	■	▲	▲	■	▲	▲	▲	▲	▲	▲	▲	▲	■	▲
	1,800	2.50	1,900	1,860	■	▲	■	▲	■	▲	■	▲	▲	■	▲	▲	■	■	▲	▲
	1,800	2.75	1,970	1,930	▲	■	▲	▲	■	■	▲	—	■	▲	■	▲	▲	▲	■	▲
1,850	3.00	2,020	1,980	■	▲	▲	—	▲	▲	▲	—	▲	■	▲	▲	■	■	▲	—	
HD <sup>2)</sup>	1,650	2.00	1,830	1,790	▲	▲	▲	▲	▲	▲	▲	▲	▲	▲	▲	▲	▲	▲	▲	■
	1,600	2.15	1,870	1,830	▲	▲	■	■	▲	■	■	■	▲	▲	▲	▲	▲	▲	■	▲
	1,650	2.25	1,910	1,870	▲	■	■	■	▲	■	▲	▲	▲	▲	■	▲	▲	▲	■	▲
	1,800	2.50	2,000	1,960	■	▲	■	▲	▲	▲	■	▲	■	■	■	■	■	■	▲	▲
	1,800	2.75	2,080	2,040	▲	■	▲	▲	■	▲	▲	—	▲	▲	■	▲	▲	■	▲	▲
1,850	3.00	2,130	2,090	■	▲	▲	—	▲	▲	▲	—	■	■	▲	▲	■	▲	▲	—	
<b>with counterweight 9.4 t</b>																				
STD <sup>1)</sup>	1,650	2.00	1,730	1,690	▲	▲	▲	▲	▲	▲	▲	■	▲	▲	▲	▲	▲	▲	▲	▲
	1,600	2.15	1,770	1,730	▲	▲	▲	■	▲	▲	▲	▲	▲	▲	▲	▲	▲	▲	▲	■
	1,650	2.25	1,810	1,770	▲	▲	▲	▲	▲	▲	■	▲	▲	▲	▲	■	▲	▲	▲	■
	1,800	2.50	1,900	1,860	▲	■	▲	■	■	■	▲	▲	▲	▲	■	▲	▲	▲	■	■
	1,800	2.75	1,970	1,930	■	▲	■	▲	▲	▲	■	▲	■	■	▲	■	■	■	▲	▲
1,850	3.00	2,020	1,980	▲	■	▲	▲	■	■	▲	▲	■	▲	■	▲	▲	▲	■	▲	
HD <sup>2)</sup>	1,650	2.00	1,830	1,790	▲	▲	▲	▲	▲	▲	▲	■	▲	▲	▲	▲	▲	▲	▲	▲
	1,600	2.15	1,870	1,830	▲	▲	▲	■	▲	▲	▲	▲	▲	▲	▲	■	▲	▲	▲	■
	1,650	2.25	1,910	1,870	▲	▲	■	▲	▲	▲	■	■	▲	▲	▲	■	▲	▲	▲	■
	1,800	2.50	2,000	1,960	▲	■	▲	■	■	■	■	▲	▲	▲	■	■	▲	▲	■	■
	1,800	2.75	2,080	2,040	■	▲	■	▲	▲	▲	■	▲	■	■	▲	▲	■	▲	■	▲
1,850	3.00	2,130	2,090	▲	■	▲	▲	■	■	▲	—	▲	▲	■	▲	▲	■	▲	▲	

\* Indicated loads are based on ISO 10567, at maximum reach, and may be swung 360° on firm and even ground

<sup>1)</sup> Standard bucket with teeth Z 50

<sup>2)</sup> HD bucket with teeth Z 50

<sup>3)</sup> Bucket for direct mounting

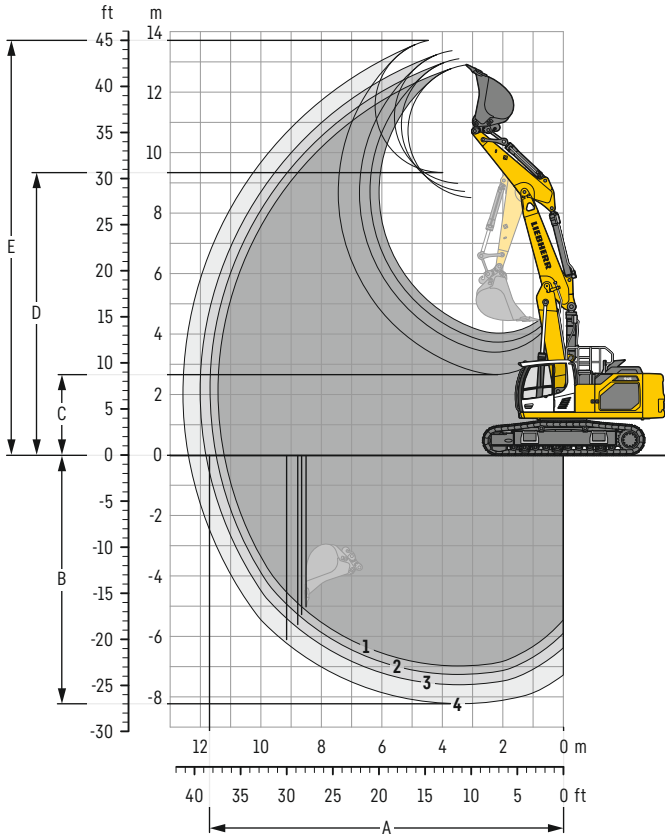
<sup>4)</sup> Bucket for mounting to quick coupler SWA 66 (430 kg)

Other buckets available upon request

Max. material weight ▲ = ≤ 2.0t/m<sup>3</sup>, ■ = ≤ 1.8t/m<sup>3</sup>, ▲ = ≤ 1.65t/m<sup>3</sup>, ■ = ≤ 1.5t/m<sup>3</sup>, ▲ = ≤ 1.2t/m<sup>3</sup>, — = not authorised

# Backhoe bucket

with two-piece boom 6.70 m



## Digging envelope

with quick coupler		1	2	3	4
Stick length	m	2.60	2.90	3.25	3.95
A Max. reach at ground level	m	11.22	11.49	11.82	12.40
B Max. digging depth	m	6.98	7.26	7.60	8.23
C Min. dumping height	m	4.03	3.73	3.40	2.66
D Max. dumping height	m	8.51	8.71	8.98	9.34
E Max. cutting height	m	12.90	13.10	13.37	13.71

## Forces

without quick coupler		1	2	3	4
Stick digging force (ISO 6015)	kN	212	198	183	159
Bucket digging force (ISO 6015)	kN	238	238	238	238
Stick digging force (SAE J1179)	kN	202	189	176	154
Bucket digging force (SAE J1179)	kN	210	210	210	210

## Operating weight and ground pressure

The operating weight includes the basic machine with counterweight 8.4t, two-piece boom 6.70 m, stick 3.25 m, quick coupler SWA 66 (430 kg) and bucket 1.75 m<sup>3</sup> (1.590 kg).

Undercarriage		S-HD		
Pad width	mm	600	750	900
Weight	kg	42,750	44,000	44,850
Ground pressure	kg/cm <sup>2</sup>	0.75	0.62	0.53

Undercarriage		LC-V		
Pad width	mm	600	750	900
Weight	kg	45,150	46,400	47,250
Ground pressure	kg/cm <sup>2</sup>	0.80	0.65	0.55

The operating weight includes the basic machine with counterweight 9.4t, two-piece boom 6.70 m, stick 3.25 m, quick coupler SWA 66 (430 kg) and bucket 1.75 m<sup>3</sup> (1.590 kg).

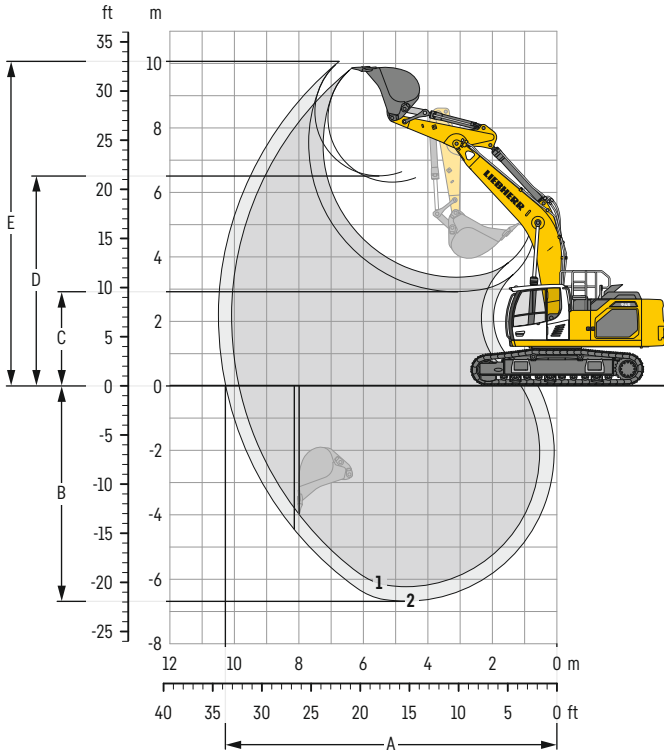
Undercarriage		S-HD		
Pad width	mm	600	750	900
Weight	kg	43,750	45,000	45,850
Ground pressure	kg/cm <sup>2</sup>	0.77	0.63	0.54

Undercarriage		LC-V		
Pad width	mm	600	750	900
Weight	kg	46,150	47,400	48,250
Ground pressure	kg/cm <sup>2</sup>	0.81	0.67	0.57



# Backhoe bucket

with mono boom SME 6.15 m



## Digging envelope

without quick coupler		1	2
Stick length	m	2.15	2.60
		SME	SME
A Max. reach at ground level	m	9.86	10.28
B Max. digging depth	m	6.23	6.68
C Min. dumping height	m	3.37	2.92
D Max. dumping height	m	6.32	6.61
E Max. cutting height	m	9.86	10.06

## Forces

without quick coupler		1	2
Stick digging force (ISO 6015)	kN	238	212
Bucket digging force (ISO 6015)	kN	264	264
Stick digging force (SAE J1179)	kN	226	202
Bucket digging force (SAE J1179)	kN	233	233

## Operating weight and ground pressure

The operating weight includes the basic machine with counterweight 8.4 t, mono boom SME 6.15 m, stick SME 2.15 m and HD bucket 2.50 m<sup>3</sup> (2,000 kg).

Undercarriage		S-HD		
Pad width	mm	600	750	900
Weight	kg	41,400	42,650	43,500
Ground pressure	kg/cm <sup>2</sup>	0.73	0.60	0.51

Undercarriage		LC-V		
Pad width	mm	600	750	900
Weight	kg	43,800	45,050	45,900
Ground pressure	kg/cm <sup>2</sup>	0.77	0.63	0.54

The operating weight includes the basic machine with counterweight 9.4 t, mono boom SME 6.15 m, stick SME 2.15 m and HD bucket 2.50 m<sup>3</sup> (2,000 kg).

Undercarriage		S-HD		
Pad width	mm	600	750	900
Weight	kg	42,400	43,650	44,500
Ground pressure	kg/cm <sup>2</sup>	0.75	0.61	0.52

Undercarriage		LC-V		
Pad width	mm	600	750	900
Weight	kg	44,800	46,050	46,900
Ground pressure	kg/cm <sup>2</sup>	0.79	0.65	0.55

**Buckets** Machine stability per ISO 10567\* (75% of tipping capacity)

Cutting width mm	Capacity ISO 7451 m <sup>3</sup>	Weight <sup>3)</sup> kg	Weight <sup>4)</sup> kg	S-HD undercarriage (with track pads 600 mm)				LC-V undercarriage (with track pads 600 mm)			
				Stick length (m)				Stick length (m)			
				without quick coupler		with quick coupler		without quick coupler		with quick coupler	
2.15	2.60	2.15	2.60	2.15	2.60	2.15	2.60				
<b>with counterweight 8.4 t</b>											
HD <sup>1)</sup>	1,600	2.15	1,870	1,830	▲	▲	▲	▲	▲	▲	▲
	1,650	2.25	1,910	1,870	▲	▲	▲	▲	▲	▲	▲
	1,800	2.50	2,000	1,960	▲	▲	▲	▲	▲	▲	▲
	1,800	2.75	2,080	2,040	▲	▲	▲	▲	▲	▲	▲
	1,850	3.00	2,130	2,090	▲	■	▲	■	▲	▲	▲
HDR <sup>2)</sup>	1,650	2.00	2,490	2,530	▲	▲	▲	▲	▲	▲	▲
	1,650	2.25	2,570	2,610	▲	▲	▲	▲	▲	▲	▲
	1,650	2.50	2,660	2,700	▲	▲	▲	▲	▲	▲	▲
<b>with counterweight 9.4 t</b>											
HD <sup>1)</sup>	1,600	2.15	1,870	1,830	▲	▲	▲	▲	▲	▲	▲
	1,650	2.25	1,910	1,870	▲	▲	▲	▲	▲	▲	▲
	1,800	2.50	2,000	1,960	▲	▲	▲	▲	▲	▲	▲
	1,800	2.75	2,080	2,040	▲	▲	▲	▲	▲	▲	▲
	1,850	3.00	2,130	2,090	▲	▲	▲	▲	▲	▲	▲
HDR <sup>2)</sup>	1,650	2.00	2,490	2,530	▲	▲	▲	▲	▲	▲	▲
	1,650	2.25	2,570	2,610	▲	▲	▲	▲	▲	▲	▲
	1,650	2.50	2,660	2,700	▲	▲	▲	▲	▲	▲	▲

\* Indicated loads are based on ISO 10567, at maximum reach, and may be swung 360° on firm and even ground

<sup>1)</sup> HD bucket with teeth Z 50

<sup>2)</sup> HDR bucket with teeth Z 70

<sup>3)</sup> Bucket for direct mounting

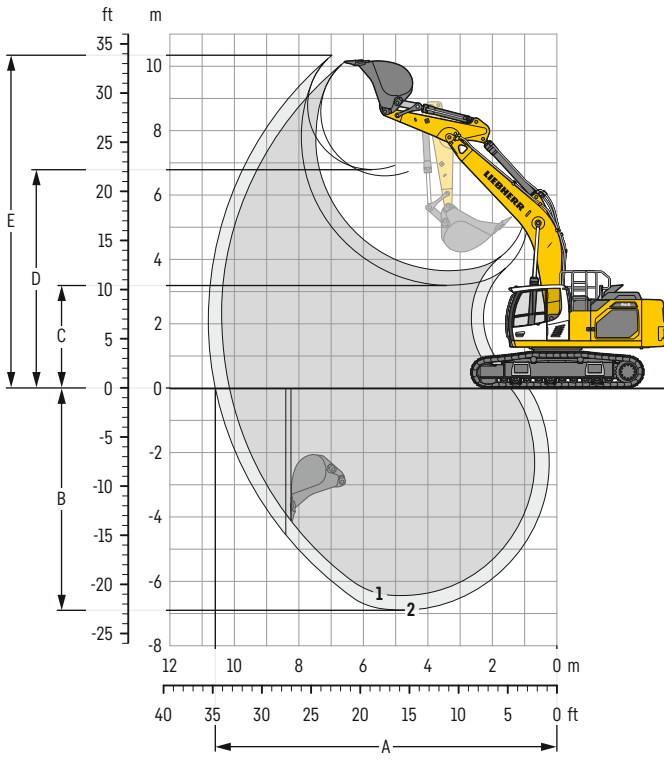
<sup>4)</sup> Bucket for mounting to quick coupler SWA 66 (430 kg)

Other buckets available upon request

Max. material weight ▲ = ≤ 2.0t/m<sup>3</sup>, ■ = ≤ 1.8t/m<sup>3</sup>

# Backhoe bucket

with mono boom SME 6.45 m



## Digging envelope

without quick coupler		1	2
Stick length	m	2.15	2.60
		SME	SME
A Max. reach at ground level	m	10.17	10.58
B Max. digging depth	m	6.44	6.89
C Min. dumping height	m	3.65	3.20
D Max. dumping height	m	6.60	6.79
E Max. cutting height	m	10.13	10.34

## Forces

without quick coupler		1	2
Stick digging force (ISO 6015)	kN	238	212
Bucket digging force (ISO 6015)	kN	264	264
Stick digging force (SAE J1179)	kN	226	202
Bucket digging force (SAE J1179)	kN	233	233

## Operating weight and ground pressure

The operating weight includes the basic machine with counterweight 8.4 t, mono boom SME 6.45 m, stick SME 2.60 m and HD bucket 2.25 m<sup>3</sup> (1,910 kg).

Undercarriage		S-HD		
Pad width	mm	600	750	900
Weight	kg	41,550	42,800	43,650
Ground pressure	kg/cm <sup>2</sup>	0.73	0.60	0.51

Undercarriage		LC-V		
Pad width	mm	600	750	900
Weight	kg	43,950	45,200	46,050
Ground pressure	kg/cm <sup>2</sup>	0.77	0.64	0.54

The operating weight includes the basic machine with counterweight 9.4 t, mono boom SME 6.45 m, stick SME 2.60 m and HD bucket 2.25 m<sup>3</sup> (1,910 kg).

Undercarriage		S-HD		
Pad width	mm	600	750	900
Weight	kg	42,550	43,800	44,650
Ground pressure	kg/cm <sup>2</sup>	0.75	0.62	0.52

Undercarriage		LC-V		
Pad width	mm	600	750	900
Weight	kg	44,950	46,200	47,050
Ground pressure	kg/cm <sup>2</sup>	0.79	0.65	0.55

**Buckets** Machine stability per ISO 10567\* (75% of tipping capacity)

Cutting width mm	Capacity ISO 7451 m <sup>3</sup>	Weight <sup>3)</sup> kg	Weight <sup>4)</sup> kg	S-HD undercarriage (with track pads 600 mm)				LC-V undercarriage (with track pads 600 mm)			
				Stick length (m)				Stick length (m)			
				without quick coupler		with quick coupler		without quick coupler		with quick coupler	
2.15	2.60	2.15	2.60	2.15	2.60	2.15	2.60				
<b>with counterweight 8.4 t</b>											
HD <sup>1)</sup>	1,600	2.15	1,870	1,830	▲	▲	▲	▲	▲	▲	▲
	1,650	2.25	1,910	1,870	▲	▲	▲	▲	▲	▲	▲
	1,800	2.50	2,000	1,960	▲	▲	▲	▲	▲	▲	▲
	1,800	2.75	2,080	2,040	▲	■	▲	■	▲	▲	▲
	1,850	3.00	2,130	2,090	■	▲	■	▲	▲	■	■
HDR <sup>2)</sup>	1,650	2.00	2,490	2,530	▲	▲	▲	▲	▲	▲	▲
	1,650	2.25	2,570	2,610	▲	▲	▲	▲	▲	▲	▲
	1,650	2.50	2,660	2,700	▲	■	▲	■	▲	▲	▲
<b>with counterweight 9.4 t</b>											
HD <sup>1)</sup>	1,600	2.15	1,870	1,830	▲	▲	▲	▲	▲	▲	▲
	1,650	2.25	1,910	1,870	▲	▲	▲	▲	▲	▲	▲
	1,800	2.50	2,000	1,960	▲	▲	▲	▲	▲	▲	▲
	1,800	2.75	2,080	2,040	▲	▲	▲	▲	▲	▲	▲
	1,850	3.00	2,130	2,090	▲	■	▲	■	▲	▲	▲
HDR <sup>2)</sup>	1,650	2.00	2,490	2,530	▲	▲	▲	▲	▲	▲	▲
	1,650	2.25	2,570	2,610	▲	▲	▲	▲	▲	▲	▲
	1,650	2.50	2,660	2,700	▲	▲	▲	▲	▲	▲	▲

\* Indicated loads are based on ISO 10567, at maximum reach, and may be swung 360° on firm and even ground

<sup>1)</sup> HD bucket with teeth Z 50

<sup>2)</sup> HDR bucket with teeth Z 70

<sup>3)</sup> Bucket for direct mounting

<sup>4)</sup> Bucket for mounting to quick coupler SWA 66 (430 kg)

Other buckets available upon request

Max. material weight ▲ = ≤ 2.0t/m<sup>3</sup>, ■ = ≤ 1.8t/m<sup>3</sup>, ▲ = ≤ 1.65t/m<sup>3</sup>

# Lift capacities

with mono boom 6.45 m, counterweight 8.4 t and track pads 600 mm

## Stick 2.60 m

Under-carriage	3.0m		4.5m		6.0m		7.5m		9.0m		10.5m		m	
	Height	Can be slewed through 360°	Height	Can be slewed through 360°	Height	Can be slewed through 360°	Height	Can be slewed through 360°	Height	Can be slewed through 360°	Height	Can be slewed through 360°		
9.0														
7.5														
6.0					10.0*	10.0*						9.8*	9.8*	6.9
4.5					10.6*	10.6*	8.9	9.7*				8.2	9.6*	7.9
3.0			15.4*	15.4*	11.9*	11.9*	8.7	10.2*				7.2	9.6*	8.5
1.5			16.6*	16.6*	11.0	14.3*	8.1	11.4*				6.7	9.7*	8.8
0			16.4	19.6*	10.8	14.7*	8.0	11.6*				6.6	9.8*	8.8
-1.5	15.4*	15.4*	16.5	18.3*	10.7	14.1*	8.0	11.1*				6.7	10.0*	8.6
-3.0	20.0*	20.0*	16.0*	16.0*	10.9	12.5*						7.3	10.1*	8.0
-4.5			11.9*	11.9*								8.7	10.1*	7.1
-6.0												9.4*	9.4*	5.7
9.0					10.0*	10.0*						9.8*	9.8*	6.9
7.5					10.7*	10.7*	9.4	9.7*				8.5	9.6*	7.9
6.0			15.7*	15.7*	12.0*	12.0*	9.1	10.2*				7.5	9.6*	8.5
4.5			18.2	18.7*	12.1	13.4*	8.8	10.9*				7.1	9.7*	8.8
3.0			16.7*	16.7*	11.6	14.4*	8.6	11.4*				6.9	9.8*	8.8
1.5			17.3	19.5*	11.4	14.6*	8.4	11.6*				7.2	10.0*	8.6
0			16.4*	16.4*	17.4	18.2*	11.4	14.0*	8.4	11.0*		7.8	10.1*	8.0
-1.5	19.6*	19.6*	15.8*	15.8*	11.5	12.3*						9.4	10.1*	7.1
-3.0			11.4*	11.4*								9.2*	9.2*	5.7
-4.5														
-6.0														

## Stick 2.90 m

Under-carriage	3.0m		4.5m		6.0m		7.5m		9.0m		10.5m		m		
	Height	Can be slewed through 360°	Height	Can be slewed through 360°	Height	Can be slewed through 360°	Height	Can be slewed through 360°	Height	Can be slewed through 360°	Height	Can be slewed through 360°			
9.0															
7.5															
6.0							10.2*	10.2*	9.0	9.3*			9.3*	9.3*	7.2
4.5							10.6*	10.6*	8.7	9.9*			7.8	9.1*	8.2
3.0			14.6*	14.6*	11.5*	11.5*	8.7	9.9*					6.9	9.2*	8.7
1.5			17.5	17.8*	11.6	13.0*	8.4	10.6*	6.4	9.3*			6.4	9.3*	9.0
0			16.6	19.6*	11.1	14.1*	8.1	11.2*	6.3	9.5			6.3	9.4	9.0
-1.5	15.4*	15.4*	16.3	18.7*	10.7	14.2*	7.9	11.2*					6.4	9.7*	8.8
-3.0	21.5*	21.5*	16.5	16.6*	10.8	12.9*							7.0	9.8*	8.3
-4.5			16.2*	16.2*	13.0*	13.0*	9.6*	9.6*					8.1	9.9*	7.5
-6.0													9.5*	9.5*	6.1
9.0															
7.5													9.2*	9.2*	7.2
6.0					10.3*	10.3*	9.4*	9.4*					8.1	9.1*	8.2
4.5			14.9*	14.9*	11.6*	11.6*	9.2	9.9*					7.2	9.2*	8.7
3.0			18.1*	18.1*	12.1	13.1*	8.9	10.7*	6.8	9.3*			6.8	9.3*	9.0
1.5			17.5	19.7*	11.6	14.2*	8.6	11.3*	6.7	9.5*			6.7	9.5*	9.0
0			17.3	19.7*	11.4	14.6*	8.4	11.5*					6.8	9.7*	8.8
-1.5	16.1*	16.1*	17.3	18.6*	11.3	14.2*	8.4	11.1*					7.4	9.9*	8.3
-3.0	21.1*	21.1*	16.4*	16.4*	11.4	12.7*							8.8	9.9*	7.5
-4.5			12.5*	12.5*									9.4*	9.4*	6.1
-6.0															

## Stick 3.25 m

Under-carriage	3.0m		4.5m		6.0m		7.5m		9.0m		10.5m		m		
	Height	Can be slewed through 360°	Height	Can be slewed through 360°	Height	Can be slewed through 360°	Height	Can be slewed through 360°	Height	Can be slewed through 360°	Height	Can be slewed through 360°			
9.0															
7.5							8.8*	8.8*					8.1*	8.1*	7.6
6.0							8.9*	8.9*					7.3	8.0*	8.5
4.5	20.8*	20.8*	13.7*	13.7*	10.9*	10.9*	8.7	9.5*	6.6	8.7*			6.5	8.1*	9.1
3.0			17.0*	17.0*	11.6	12.5*	8.4	10.3*	6.4	9.0*			6.1	8.5*	9.3
1.5			16.7	19.2*	11.0	13.8*	8.1	11.0*	6.3	9.3*			5.9	8.9	9.4
0	7.5*	7.5*	16.2	19.7*	10.7	14.4*	7.9	11.4*	6.2	9.3			6.0	9.1	9.1
-1.5	14.8*	14.8*	16.2	18.9*	10.5	14.3*	7.8	11.2*					6.5	9.4*	8.6
-3.0	22.9*	22.9*	16.3	17.2*	10.6	13.2*	7.8	10.1*					7.5	9.6*	7.8
-4.5	18.0*	18.0*	13.9*	13.9*	10.6*	10.6*							9.4*	9.4*	6.6
-6.0															
9.0													8.6*	8.6*	
7.5							8.7*	8.7*					8.1*	8.1*	7.6
6.0							8.9*	8.9*					7.6	8.0*	8.5
4.5	21.7*	21.7*	14.0*	14.0*	11.1*	11.1*	9.2	9.6*	6.9	8.7*			6.8	8.1*	9.1
3.0			17.2*	17.2*	12.2	12.6*	8.8	10.3*	6.8	9.0*			6.4	8.6*	9.3
1.5			17.6	19.3*	11.6	13.8*	8.5	11.0*	6.6	9.3*			6.3	9.0*	9.4
0	8.2*	8.2*	17.2	19.6*	11.3	14.4*	8.3	11.4*	6.5	9.3*			6.4	9.2*	9.1
-1.5	15.5*	15.5*	17.1	18.8*	11.2	14.2*	8.2	11.2*					6.9	9.4*	8.6
-3.0	22.6*	22.6*	17.0*	17.0*	11.2	13.0*	8.3	10.0*					8.1	9.6*	7.8
-4.5	17.5*	17.5*	13.6*	13.6*	10.2*	10.2*							9.3*	9.3*	6.6
-6.0															

## Stick 3.95 m

Under-carriage	3.0m		4.5m		6.0m		7.5m		9.0m		10.5m		m		
	Height	Can be slewed through 360°	Height	Can be slewed through 360°	Height	Can be slewed through 360°	Height	Can be slewed through 360°	Height	Can be slewed through 360°	Height	Can be slewed through 360°			
9.0															
7.5													6.7*	6.7*	
6.0													6.4*	6.4*	8.3
4.5													6.3*	6.3*	9.1
3.0	13.0*	13.0*	15.3*	15.3*	11.5*	11.5*	8.7*	8.7*	6.6	8.0*			5.9	6.5*	9.6
1.5	7.1*	7.1*	16.9	18.0*	11.1	13.0*	8.1	10.4*	6.2	8.9*			5.5	6.8*	9.9
0	10.0*	10.0*	16.2	19.3*	10.6	14.0*	7.8	11.0*	6.0	9.1*			5.4	7.3*	9.9
-1.5	14.7*	14.7*	15.9	19.2*	10.4	14.2*	7.6	11.1*	6.0	9.0*			5.5	8.3*	9.7
-3.0	20.6*	20.6*	16.0	18.0*	10.3	13.6*	7.6	10.6*					5.8	8.8*	9.2
-4.5	21.2*	21.2*	15.6*	15.6*	10.5	11.8*							6.5	9.1*	8.4
-6.0			11.0*	11.0*									8.1	9.3*	7.3
9.0													8.9*	8.9*	5.5
7.5															
6.0													6.7*	6.7*	
4.5													6.4*	6.4*	8.3
3.0	11.4*	11.4*	15.6*	15.6*	11.6*	11.6*	8.9	9.7*	7.0*	7.0*			6.3*	6.3*	9.1
1.5	7.2*	7.2*	17.8	18.2*	11.7	13.1*	8.5	10.5*	6.9	8.1*			6.2	6.5*	9.6
0	10.4*	10.4*	17.1	19.3*	11.2	14.0*	8.2	11.0*	6.4	9.2*			5.8	6.8*	9.9
-1.5	15.1*	15.1*	16.9	19.2*	11.0	14.2*	8.1	11.1*	6.3	9.0*			5.7	7.4*	9.9
-3.0	21.2*	21.2*	16.9	17.9*	11.0	13.5*	8.1	10.5*					5.8	8.4*	9.7
-4.5	20.7*	20.7*	15.3*	15.3*	11.2	11.6*							6.2	8.8*	9.2
-6.0			10.4*	10.4*									7.0	9.1*	8.4
													8.8	9.3*	7.3
													8.8*	8.8*	5.5

 Height 
  Can be slewed through 360° 
  In longitudinal position of undercarriage 
  Max. reach 
 \* Limited by hydr. capacity

The load values are quoted in tons (t) at stick end (without bucket), and may be swung 360° on firm and even ground. Adjacent values are valid for the undercarriage when in the longitudinal position. Capacities are valid for 600 mm wide track pads. Indicated loads are based on ISO 10567 standard and do not exceed 75% of tipping or 87% of hydraulic capacity (indicated via \*). Without bucket cylinder, link and lever the lift capacities will increase by 495 kg. Lifting capacity of the excavator is limited by machine stability and hydraulic capacity.

According to European Standard, EN 474-5: In the European Union excavators have to be equipped with an overload warning device, a load diagram and automatic safety check valves on hoist cylinders and stick cylinder(s), when they are used for lifting operations which require the use of lifting accessories.

Determine maximum load lift from load lift chart displayed in the operator's cab or from load lift chart detailed in the operator's manual supplied with the machine.

# Lift capacities

with mono boom 6.45 m, counterweight 9.4 t and track pads 600 mm

## Stick 2.60 m

Under-carriage	3.0m		4.5m		6.0m		7.5m		9.0m		10.5m		m	
	Height	Can be slewed through 360°	Height	Can be slewed through 360°	Height	Can be slewed through 360°	Height	Can be slewed through 360°	Height	Can be slewed through 360°	Height	Can be slewed through 360°		
9.0														
7.5														
6.0					10.0*	10.0*						9.8*	9.8*	6.9
4.5					10.6*	10.6*	9.5	9.7*				8.7	9.6*	7.9
3.0			15.4*	15.4*	11.9*	11.9*	9.3	10.2*				7.7	9.6*	8.5
1.5			16.6*	16.6*	11.8	14.3*	8.7	11.4*				7.2	9.7*	8.8
0			17.6	19.6*	11.5	14.7*	8.5	11.6*				7.0	9.8*	8.8
-1.5	15.4*	15.4*	17.6	18.3*	11.5	14.1*	8.5	11.1*				7.2	10.0*	8.6
-3.0	20.0*	20.0*	16.0*	16.0*	11.6	12.5*						7.9	10.1*	8.0
-4.5			11.9*	11.9*								9.3	10.1*	7.1
-6.0												9.4*	9.4*	5.7
9.0														
7.5					10.0*	10.0*								
6.0					10.7*	10.7*	9.7*	9.7*				9.0	9.6*	7.9
4.5			15.7*	15.7*	12.0*	12.0*	9.7	10.2*				8.0	9.6*	8.5
3.0			18.7*	18.7*	12.9	13.4*	9.4	10.9*				7.5	9.7*	8.8
1.5			16.7*	16.7*	12.4	14.4*	9.2	11.4*				7.4	9.8*	8.8
0			18.5	19.5*	12.2	14.6*	9.0	11.6*				7.7	10.0*	8.6
-1.5	16.4*	16.4*	18.2*	18.2*	12.1	14.0*	9.0	11.0*				8.4	10.1*	8.0
-3.0	19.6*	19.6*	15.8*	15.8*	12.3	12.3*						10.0	10.1*	7.1
-4.5			11.4*	11.4*								9.2*	9.2*	5.7
-6.0														

## Stick 2.90 m

Under-carriage	3.0m		4.5m		6.0m		7.5m		9.0m		10.5m		m				
	Height	Can be slewed through 360°	Height	Can be slewed through 360°	Height	Can be slewed through 360°	Height	Can be slewed through 360°	Height	Can be slewed through 360°	Height	Can be slewed through 360°					
9.0																	
7.5																	
6.0																	
4.5																	
3.0							10.2*	10.2*	9.3*	9.3*			9.3*	9.3*	7.2		
1.5															8.3	9.1*	8.2
0															7.3	9.2*	8.7
-1.5	15.4*	15.4*			14.6*	14.6*	11.5*	11.5*	9.3	9.9*					6.9	9.3*	9.0
-3.0	21.5*	21.5*	17.8	17.8*	12.3	13.0*	9.0	10.6*	6.9	9.3*					6.7	9.4*	9.0
-4.5			17.5	19.7*	11.5	14.6*	8.5	11.5*							6.9	9.7*	8.8
-6.0			16.2*	16.2*	13.0*	13.0*	9.6*	9.6*							7.5	9.8*	8.3
9.0																	
7.5																	
6.0																	
4.5																	
3.0																	
1.5																	
0																	
-1.5	15.4*	15.4*	17.5	18.7*	11.4	14.2*	8.5	11.2*							6.9	9.7*	8.8
-3.0	21.5*	21.5*	16.6*	16.6*	11.5	12.9*									7.5	9.8*	8.3
-4.5			16.2*	16.2*	13.0*	13.0*	9.6*	9.6*							8.7	9.9*	7.5
-6.0															9.5*	9.5*	6.1
9.0																	
7.5																	
6.0																	
4.5																	
3.0																	
1.5																	
0																	
-1.5	16.1*	16.1*	18.4	18.6*	12.0	14.2*	8.9	11.1*							7.1	9.5*	9.0
-3.0	21.1*	21.1*	16.4*	16.4*	12.2	12.7*									7.1	9.5*	9.0
-4.5			12.5*	12.5*											7.1	9.5*	9.0
-6.0															7.3	9.7*	8.8

## Stick 3.25 m

Under-carriage	3.0m		4.5m		6.0m		7.5m		9.0m		10.5m		m
	Height	Can be slewed through 360°	Height	Can be slewed through 360°	Height	Can be slewed through 360°	Height	Can be slewed through 360°	Height	Can be slewed through 360°	Height	Can be slewed through 360°	
9.0													
7.5													
6.0													
4.5													
3.0													
1.5													
0													
-1.5													
-3.0													
-4.5													
-6.0													
9.0													
7.5													
6.0													
4.5													
3.0													
1.5													
0													
-1.5													
-3.0													
-4.5													
-6.0													
9.0													
7.5													
6.0													
4.5													
3.0													
1.5													
0													
-1.5													
-3.0													
-4.5													
-6.0													

## Stick 3.95 m

Under-carriage	3.0m		4.5m		6.0m		7.5m		9.0m		10.5m		m
	Height	Can be slewed through 360°	Height	Can be slewed through 360°	Height	Can be slewed through 360°	Height	Can be slewed through 360°	Height	Can be slewed through 360°	Height	Can be slewed through 360°	
9.0													
7.5													
6.0													
4.5													
3.0													
1.5													
0													
-1.5													
-3.0													
-4.5													
-6.0													
9.0													
7.5													
6.0													
4.5													
3.0													
1.5													
0													
-1.5													
-3.0													
-4.5													
-6.0													
9.0													
7.5													
6.0													
4.5													
3.0													
1.5													
0													
-1.5													
-3.0													
-4.5													
-6.0													

Height Can be slewed through 360° In longitudinal position of undercarriage Max. reach \* Limited by hydr. capacity

The load values are quoted in tons (t) at stick end (without bucket), and may be swung 360° on firm and even ground. Adjacent values are valid for the undercarriage when in the longitudinal position. Capacities are valid for 600 mm wide track pads. Indicated loads are based on ISO 10567 standard and do not exceed 75% of tipping or 87% of hydraulic capacity (indicated via \*). Without bucket cylinder, link and lever the lift capacities will increase by 495 kg. Lifting capacity of the excavator is limited by machine stability and hydraulic capacity.

According to European Standard, EN 474-5: In the European Union excavators have to be equipped with an overload warning device, a load diagram and automatic safety check valves on hoist cylinders and stick cylinder(s), when they are used for lifting operations which require the use of lifting accessories.

Determine maximum load lift from load lift chart displayed in the operator's cab or from load lift chart detailed in the operator's manual supplied with the machine.

# Lift capacities

with mono boom straight 7.00 m, counterweight 8.4 t and track pads 600 mm

## Stick 2.60 m

Under-carriage	m	3.0m		4.5m		6.0m		7.5m		9.0m		10.5m		m		
S-HD	10.5												14.0*	14.0*	4.3	
	9.0													11.0	11.3*	6.5
	7.5													8.2	10.2*	7.8
	6.0													6.9	9.6*	8.7
	4.5			15.5*	15.5*	12.3*	12.3*	8.7	10.5*					6.2	9.2*	9.2
	3.0			17.7	18.1*	11.7	13.3*	8.4	10.9*	6.4	9.4*			5.8	8.7	9.5
	1.5					10.6	14.5*	7.9	11.4*	6.2	9.3			5.7	8.6	9.5
	0					10.4	13.8*	7.7	11.0*	6.1	8.8*			5.9	8.3*	9.3
	-1.5			14.5*	14.5*	10.4	12.4*	7.7	10.0*					6.3	7.7*	8.8
	-3.0			11.5*	11.5*	10.1*	10.1*	7.8*	7.8*					6.8*	6.8*	8.0
-4.5																
LC-V	10.5			14.1*	14.1*								13.6*	13.6*	4.3	
	9.0					11.5*	11.5*						11.1*	11.1*	6.5	
	7.5					11.6*	11.6*	9.3	10.3*				8.5	10.1*	7.8	
	6.0			15.7*	15.7*	12.4*	12.4*	9.2	10.5*				7.2	9.5*	8.7	
	4.5					12.2	13.4*	8.9	10.9*	6.8	9.4*		6.5	9.2*	9.2	
	3.0					11.6	14.3*	8.6	11.3*	6.6	9.5*		6.1	8.9*	9.5	
	1.5					11.2	14.4*	8.3	11.4*	6.5	9.3*		6.1	8.6*	9.5	
	0			10.1*	10.1*	11.0	13.8*	8.2	11.0*	6.5	8.7*		6.3	8.3*	9.3	
	-1.5			14.3*	14.3*	11.1	12.3*	8.2	9.9*				6.8	7.7*	8.8	
	-3.0			11.2*	11.2*	9.8*	9.8*	7.5*	7.5*				6.7*	6.7*	8.0	
-4.5																

## Stick 2.90 m

Under-carriage	m	3.0m		4.5m		6.0m		7.5m		9.0m		10.5m		m	
S-HD	10.5												11.9*	11.9*	4.9
	9.0												10.1*	10.1*	6.9
	7.5												7.7	9.3*	8.1
	6.0												6.5	9.1*	9.0
	4.5			14.9*	14.9*	11.1*	11.1*	8.8	10.2*				5.9	8.8	9.5
	3.0			17.5*	17.5*	11.7	13.0*	8.5	10.7*	6.4	9.2*		5.6	8.4	9.8
	1.5					10.6	14.4*	7.8	11.4*	6.1	9.3		5.5	8.2	9.8
	0			11.3*	11.3*	10.4	14.0*	7.7	11.1*	6.0	8.9*		5.6	8.1*	9.6
	-1.5			15.4*	15.4*	10.3	12.7*	7.6	10.2*	6.1	7.7*		6.0	7.6*	9.1
	-3.0			12.4*	12.4*	10.5	10.6*	7.7	8.3*				6.8*	6.8*	8.3
-4.5					7.1*	7.1*						6.5*	6.5*	6.7	
LC-V	10.5												11.7*	11.7*	4.9
	9.0												10.0*	10.0*	6.9
	7.5												8.0	9.3*	8.1
	6.0	21.8*	21.8*	15.1*	15.1*	12.0*	12.0*	9.2	10.3*	6.9	9.2*		6.8	9.1*	9.0
	4.5			17.7*	17.7*	12.3	13.1*	8.9	10.7*	6.8	9.3*		6.2	8.8*	9.5
	3.0					11.6	14.1*	8.6	11.2*	6.6	9.4*		5.9	8.6*	9.8
	1.5					11.2	14.4*	8.3	11.4*	6.5	9.3*		5.8	8.3*	9.8
	0			11.9*	11.9*	11.0	13.9*	8.1	11.1*	6.4	8.8*		6.0	8.0*	9.6
	-1.5			15.1*	15.1*	11.0	12.6*	8.1	10.1*	6.4	7.6*		6.4	7.6*	9.1
	-3.0			12.1*	12.1*	10.3*	10.3*	8.1*	8.1*				6.7*	6.7*	8.3
-4.5															

## Stick 3.25 m

Under-carriage	m	3.0m		4.5m		6.0m		7.5m		9.0m		10.5m		m	
S-HD	10.5												10.2*	10.2*	5.5
	9.0												8.8*	8.8*	7.3
	7.5												7.2	8.2*	8.5
	6.0												6.1	8.0*	9.3
	4.5			13.2*	13.2*	11.5*	11.5*	8.8	9.9*	6.6	8.9*		5.6	8.0*	9.8
	3.0			16.7*	16.7*	11.8	12.6*	8.5	10.4*	6.4	9.0*		5.2	7.9	10.1
	1.5			15.2*	15.2*	11.1	13.7*	8.1	10.9*	6.2	9.2*		5.2	7.8	10.1
	0			12.5*	12.5*	10.3	14.0*	7.6	11.1*	5.9	9.0*		5.3	7.7*	9.9
	-1.5	8.9*	8.9*	15.8	16.1*	10.2	13.0*	7.5	10.3*	5.9	8.1*		5.6	7.3*	9.4
	-3.0			13.3*	13.3*	10.3	11.1*	7.6	8.8*				6.3	6.7*	8.7
-4.5					7.9*	7.9*	5.5*	5.5*				5.4*	5.4*	7.6	
LC-V	10.5												10.0*	10.0*	5.5
	9.0												8.7*	8.7*	7.3
	7.5												7.4	8.2*	8.5
	6.0												6.4	8.0*	9.3
	4.5			13.9*	13.9*	11.6*	11.6*	9.2	9.9*	6.9	8.9*		5.9	8.0*	9.8
	3.0			16.9*	16.9*	12.4	12.7*	8.9	10.5*	6.8	9.0*		5.6	8.2*	10.1
	1.5			9.5*	9.5*	11.2	14.3*	8.2	11.2*	6.4	9.2*		5.5	8.0*	10.1
	0			12.9*	12.9*	10.9	14.0*	8.0	11.1*	6.3	8.9*		5.6	7.7*	9.9
	-1.5	9.5*	9.5*	15.9*	15.9*	10.8	12.8*	8.0	10.3*	6.3	8.0*		6.0	7.3*	9.4
	-3.0			13.0*	13.0*	10.8*	10.8*	8.1	8.6*				6.6*	6.6*	8.7
-4.5					7.6*	7.6*						5.5*	5.5*	7.6	

## Stick 3.95 m

Under-carriage	m	3.0m		4.5m		6.0m		7.5m		9.0m		10.5m		m		
S-HD	10.5												7.6*	7.6*	6.5	
	9.0												6.8*	6.8*	8.1	
	7.5												6.3	6.4*	9.2	
	6.0												5.5	6.3*	9.9	
	4.5			15.2*	15.2*	11.7*	11.7*	8.5	9.8*	6.4	8.6*		5.0	6.4*	10.4	
	3.0			17.2	17.8*	11.2	13.0*	8.1	10.4*	6.2	8.8*	4.9	7.4	4.8	6.6*	10.6
	1.5			16.0*	16.0*	10.6	13.9*	7.7	10.9*	6.0	9.0*	4.8	7.3	4.7	7.0*	10.7
	0			15.4*	15.4*	10.2	14.0*	7.5	11.0*	5.8	9.0*		4.7	7.2	10.5	
	-1.5	9.8*	9.8*	15.4	17.3*	10.0	13.3*	7.3	10.6*	5.7	8.4*		5.0	7.0*	10.0	
	-3.0	15.3*	15.3*	14.9*	14.9*	10.0	11.9*	7.3	9.4*	5.8	7.2*		5.5	6.6*	9.4	
-4.5			11.5*	11.5*	9.4*	9.4*	7.2*	7.2*				5.8*	5.8*	8.4		
LC-V	10.5												7.5*	7.5*	6.5	
	9.0												6.7*	6.7*	8.1	
	7.5												6.4*	6.4*	9.2	
	6.0												5.8	6.3*	9.9	
	4.5			15.4*	15.4*	11.9*	11.9*	9.0	9.9*	6.8	8.6*		5.3	6.4*	10.4	
	3.0			18.0*	18.0*	11.8	13.1*	8.5	10.5*	6.5	8.9*	5.2	7.7*	5.0	6.6*	10.6
	1.5			15.6*	15.6*	11.2	13.9*	8.2	10.9*	6.3	9.0*	5.1	7.6*	5.0	7.0*	10.7
	0			15.6*	15.6*	10.8	14.0*	7.9	11.0*	6.2	8.9*		5.1	7.2*	10.5	
	-1.5	10.2*	10.2*	16.4	17.1*	10.6	13.3*	7.8	10.5*	6.1	8.4*		5.4	7.0*	10.0	
	-3.0	15.8*	15.8*	14.7*	14.7*	10.7	11.7*	7.8	9.3*	6.2	7.0*		6.0	6.5*	9.4	
-4.5			11.1*	11.1*	9.1*	9.1*	6.9*	6.9*				5.7*	5.7*	8.4		

Height Can be slewed through 360° In longitudinal position of undercarriage Max. reach \* Limited by hydr. capacity

The load values are quoted in tons (t) at stick end (without bucket), and may be swung 360° on firm and even ground. Adjacent values are valid for the undercarriage when in the longitudinal position. Capacities are valid for 600 mm wide track pads. Indicated loads are based on ISO 10567 standard and do not exceed 75% of tipping or 87% of hydraulic capacity (indicated via \*). Without bucket cylinder, link and lever the lift capacities will increase by 495 kg. Lifting capacity of the excavator is limited by machine stability and hydraulic capacity.

According to European Standard, EN 474-5: In the European Union excavators have to be equipped with an overload warning device, a load diagram and automatic safety check valves on hoist cylinders and stick cylinder(s), when they are used for lifting operations which require the use of lifting accessories.

Determine maximum load lift from load lift chart displayed in the operator's cab or from load lift chart detailed in the operator's manual supplied with the machine.

# Lift capacities

with mono boom straight 7.00 m, counterweight 9.4 t and track pads 600 mm

## Stick 2.60 m

Under-carriage	m	3.0m		4.5m		6.0m		7.5m		9.0m		10.5m		m		
S-HD	10.5												14.0*	14.0*	4.3	
	9.0													11.3*	11.3*	6.5
	7.5													8.7	10.2*	7.8
	6.0													7.3	9.6*	8.7
	4.5			15.5*	15.5*	12.3*	12.3*	9.3	10.5*					6.6	9.2*	9.2
	3.0			18.1*	18.1*	12.4	13.3*	9.0	10.9*	6.9	9.4*			6.2	8.9*	9.5
	1.5					11.4	14.5*	8.4	11.4*	6.6	9.3*			6.1	8.6*	9.5
	0					11.2	13.8*	8.3	11.0*	6.6	8.8*			6.3	8.3*	9.3
	-1.5			14.5*	14.5*	11.2	12.4*	8.3	10.0*					6.8	7.7*	8.8
	-3.0			11.5*	11.5*	10.1*	10.1*	7.8*	7.8*					6.8*	6.8*	8.0
-4.5																
LC-V	10.5			14.1*	14.1*								13.6*	13.6*	4.3	
	9.0					11.5*	11.5*						11.1*	11.1*	6.5	
	7.5					11.6*	11.6*	9.9	10.3*				9.0	10.1*	7.8	
	6.0			15.7*	15.7*	12.4*	12.4*	9.7	10.5*				7.6	9.5*	8.7	
	4.5					13.0	13.4*	9.4	10.9*	7.2	9.4*		6.9	9.2*	9.2	
	3.0					12.4	14.3*	9.1	11.3*	7.1	9.5*		6.6	8.9*	9.5	
	1.5					12.0	14.4*	8.9	11.4*	7.0	9.3*		6.5	8.6*	9.5	
	0			10.1*	10.1*	11.8	13.8*	8.7	11.0*	6.9	8.7*		6.7	8.3*	9.3	
	-1.5			14.3*	14.3*	11.8	12.3*	8.7	9.9*				7.3	7.7*	8.8	
	-3.0			11.2*	11.2*	9.8*	9.8*	7.5*	7.5*				6.7*	6.7*	8.0	
-4.5																

## Stick 2.90 m

Under-carriage	m	3.0m		4.5m		6.0m		7.5m		9.0m		10.5m		m	
S-HD	10.5												11.9*	11.9*	4.9
	9.0												10.1*	10.1*	6.9
	7.5								9.5	10.0*			8.2	9.3*	8.1
	6.0								9.3	10.2*			7.0	9.1*	9.0
	4.5			14.9*	14.9*	11.9*	11.9*	9.3	10.2*				6.3	8.9*	9.5
	3.0			17.5*	17.5*	12.5	13.0*	9.0	10.7*	6.9	9.2*		6.0	8.1*	9.6
	1.5					11.8	14.0*	8.7	11.2*	6.7	9.4*		5.9	8.4*	9.8
	0					11.3*	11.3*	11.1	14.0*	8.2	11.1*		6.0	8.1*	9.6
	-1.5			15.4*	15.4*	11.1	12.7*	8.2	10.2*	6.5	7.7*		6.5	7.6*	9.1
	-3.0			12.4*	12.4*	10.6*	10.6*	8.3	8.3*				6.8*	6.8*	8.3
-4.5					7.1*	7.1*						6.5*	6.5*	6.7	
LC-V	10.5												11.7*	11.7*	4.9
	9.0												10.0*	10.0*	6.9
	7.5								10.0	10.0*			8.5	9.3*	8.1
	6.0	21.8*	21.8*	15.1*	15.1*	12.0*	12.0*	9.8	10.3*	7.4	9.2*		7.3	9.1*	9.0
	4.5			17.7*	17.7*	13.1	13.1*	9.5	10.7*	7.2	9.3*		6.6	8.8*	9.5
	3.0					12.4	14.1*	9.1	11.2*	7.1	9.4*		6.3	8.6*	9.8
	1.5					12.0	14.4*	8.9	11.4*	6.9	9.3*		6.2	8.3*	9.8
	0			11.9*	11.9*	11.8	13.9*	8.7	11.1*	6.9	8.8*		6.4	8.0*	9.6
	-1.5			15.1*	15.1*	11.7	12.6*	8.7	10.1*	6.9	7.6*		6.9	7.6*	9.1
	-3.0			12.1*	12.1*	10.3*	10.3*	8.1*	8.1*				6.7*	6.7*	8.3
-4.5															

## Stick 3.25 m

Under-carriage	m	3.0m		4.5m		6.0m		7.5m		9.0m		10.5m		m	
S-HD	10.5												10.2*	10.2*	5.5
	9.0												8.8*	8.8*	7.3
	7.5												7.6	8.2*	8.5
	6.0												6.6	8.0*	9.3
	4.5			13.2*	13.2*	11.5*	11.5*	9.4	9.9*	6.9	9.0*		6.0	8.0*	9.8
	3.0			16.7*	16.7*	12.6	12.6*	9.0	10.4*	6.7	9.2*		5.6	8.2*	10.1
	1.5			15.2*	15.2*	11.9	13.7*	8.7	10.9*	6.5	9.2*		5.6	8.0*	10.1
	0			12.5*	12.5*	11.0	14.0*	8.2	11.1*	6.4	9.0*		5.7	7.7*	9.9
	-1.5	8.9*	8.9*	16.1*	16.1*	11.0	13.0*	8.1	10.3*	6.4	8.1*		6.1	7.3*	9.4
	-3.0			13.3*	13.3*	11.1*	11.1*	8.2	8.8*				6.7*	6.7*	8.7
-4.5					7.9*	7.9*	5.5*	5.5*				5.4*	5.4*	7.6	
LC-V	10.5												10.0*	10.0*	5.5
	9.0												8.7*	8.7*	7.3
	7.5												7.9	8.2*	8.5
	6.0												6.9	8.0*	9.3
	4.5			13.9*	13.9*	11.6*	11.6*	9.8	9.9*	7.4	8.9*		6.3	8.0*	9.8
	3.0			16.9*	16.9*	12.7*	12.7*	9.5	10.5*	7.2	9.0*		6.0	8.2*	10.1
	1.5			9.5*	9.5*	11.9	14.3*	8.8	11.2*	6.9	9.2*		5.9	8.0*	10.1
	0			12.9*	12.9*	11.7	14.0*	8.6	11.1*	6.8	8.9*		6.0	7.7*	9.9
	-1.5	9.5*	9.5*	15.9*	15.9*	11.6	12.8*	8.6	10.3*	6.8	8.0*		6.5	7.3*	9.4
	-3.0			13.0*	13.0*	10.8*	10.8*	8.6*	8.6*				6.6*	6.6*	8.7
-4.5					7.6*	7.6*						5.5*	5.5*	7.6	

## Stick 3.95 m

Under-carriage	m	3.0m		4.5m		6.0m		7.5m		9.0m		10.5m		m		
S-HD	10.5												7.6*	7.6*	6.5	
	9.0												6.8*	6.8*	8.1	
	7.5									7.1	7.4*		6.4*	6.4*	9.2	
	6.0									7.0	8.3*		5.9	6.3*	9.9	
	4.5			15.2*	15.2*	11.7*	11.7*	9.1	9.8*	6.9	8.6*		5.4	6.4*	10.4	
	3.0			17.8*	17.8*	12.0	13.0*	8.7	10.4*	6.6	8.8*	5.2	7.6*	5.1	6.6*	10.6
	1.5			16.0*	16.0*	11.3	13.9*	8.3	10.9*	6.4	9.0*	5.1	7.6*	5.0	7.0*	10.7
	0			15.4*	15.4*	10.9	14.0*	8.0	11.0*	6.3	9.0*		5.1	7.3*	10.5	
	-1.5	9.8*	9.8*	16.6	17.3*	10.8	13.3*	7.9	10.6*	6.2	8.4*		5.4	7.0*	10.0	
	-3.0	15.3*	15.3*	14.9*	14.9*	10.8	11.9*	7.9	9.4*	6.2	7.2*		6.0	6.6*	9.4	
-4.5			11.5*	11.5*	9.4*	9.4*	7.2*	7.2*				5.8*	5.8*	8.4		
LC-V	10.5												7.5*	7.5*	6.5	
	9.0												6.7*	6.7*	8.1	
	7.5									8.9*	8.9*	7.5	7.6*	6.4*	6.4*	9.2
	6.0									9.3*	9.3*	7.4	8.3*	6.2	6.3*	9.9
	4.5			15.4*	15.4*	11.9*	11.9*	9.5	9.9*	7.2	8.6*		5.7	6.4*	10.4	
	3.0			18.0*	18.0*	12.6	13.1*	9.1	10.5*	7.0	8.9*	5.5	7.7*	5.4	6.6*	10.6
	1.5			15.6*	15.6*	11.9	13.9*	8.8	10.9*	6.8	9.0*	5.4	7.6*	5.3	7.0*	10.7
	0			15.6*	15.6*	11.5	14.0*	8.5	11.0*	6.6	8.9*		5.4	7.2*	10.5	
	-1.5	10.2*	10.2*	17.1*	17.1*	11.4	13.3*	8.4	10.5*	6.6	8.4*		5.8	7.0*	10.0	
	-3.0	15.8*	15.8*	14.7*	14.7*	11.4	11.7*	8.4	9.3*	6.6	7.0*		6.4	6.5*	9.4	
-4.5			11.1*	11.1*	9.1*	9.1*	6.9*	6.9*				5.7*	5.7*	8.4		

Height Can be slewed through 360° In longitudinal position of undercarriage Max. reach \* Limited by hydr. capacity

The load values are quoted in tons (t) at stick end (without bucket), and may be swung 360° on firm and even ground. Adjacent values are valid for the undercarriage when in the longitudinal position. Capacities are valid for 600 mm wide track pads. Indicated loads are based on ISO 10567 standard and do not exceed 75% of tipping or 87% of hydraulic capacity (indicated via \*). Without bucket cylinder, link and lever the lift capacities will increase by 495 kg. Lifting capacity of the excavator is limited by machine stability and hydraulic capacity.

According to European Standard, EN 474-5: In the European Union excavators have to be equipped with an overload warning device, a load diagram and automatic safety check valves on hoist cylinders and stick cylinder(s), when they are used for lifting operations which require the use of lifting accessories.

Determine maximum load lift from load lift chart displayed in the operator's cab or from load lift chart detailed in the operator's manual supplied with the machine.

# Lift capacities

with two-piece boom 6.70 m, counterweight 8.4 t and track pads 600 mm

## Stick 2.60 m

Under-carriage	3.0m		4.5m		6.0m		7.5m		9.0m		10.5m		m	
	m	↕	↕	↕	↕	↕	↕	↕	↕	↕	↕	↕		
10.5													15.1* 15.1*	3.5
9.0													11.7* 11.7*	6.0
7.5													8.9 10.7*	7.4
6.0	22.9*	22.9*	17.1*	17.1*	12.7 13.4*	9.0 11.2*							7.3 10.3*	8.3
4.5	24.6*	24.6*	18.4 18.9*	12.4 14.1*	8.9 11.4*								6.5 9.6*	8.9
S-HD														
3.0			17.9 19.5*	12.2 14.5*	8.7 11.5*			6.3 9.3*					6.1 9.0*	9.2
1.5			17.5 19.5*	11.6 14.4*	8.4 11.4*			6.2 9.0*					6.0 8.3*	9.2
0	20.4*	20.4*	16.8 19.7*	11.1 14.4*	8.0 11.4*								6.1 7.5*	9.0
-1.5	27.9*	27.9*	16.5 19.3*	10.8 14.4*	7.8 10.4*								6.3* 6.3*	8.5
-3.0	24.5*	24.5*	16.6 17.5*	10.8 12.1*	5.3* 5.3*								5.2* 5.2*	7.6
-4.5	17.7*	17.7*	10.6* 10.6*										8.6* 8.6*	5.2
-6.0														
LC-V														
10.5													14.5* 14.5*	3.5
9.0			14.7* 14.7*	13.0* 13.0*									11.6* 11.6*	6.0
7.5			14.8* 14.8*	13.0* 13.0*	9.3 11.2*								9.2 10.6*	7.4
6.0	25.2*	25.2*	17.2* 17.2*	13.1 13.5*	9.5 11.2*								7.6 10.2*	8.3
4.5	24.5*	24.5*	19.0 19.1*	12.8 14.2*	9.4 11.4*								6.8 9.5*	8.9
3.0			18.5 19.5*	12.7 14.5*	9.1 11.5*			6.7 9.3*					6.4 8.9*	9.2
1.5			18.4 19.5*	12.1 14.4*	8.8 11.4*			6.5 8.9*					6.3 8.3*	9.2
0	21.2*	21.2*	17.7 19.7*	11.7 14.5*	8.5 11.4*								6.6 7.4*	9.0
-1.5	27.7*	27.7*	17.5 19.2*	11.5 14.3*	8.3 10.2*								6.2* 6.2*	8.5
-3.0	24.1*	24.1*	17.2* 17.2*	11.4 11.7*									5.3* 5.3*	7.6
-4.5	16.3*	16.3*											9.9* 9.9*	5.2
-6.0														

## Stick 2.90 m

Under-carriage	3.0m		4.5m		6.0m		7.5m		9.0m		10.5m		m	
	m	↕	↕	↕	↕	↕	↕	↕	↕	↕	↕	↕		
10.5													12.6* 12.6*	4.2
9.0													10.2* 10.2*	6.4
7.5													8.3 9.4*	7.8
6.0	15.7*	15.7*	15.8* 15.8*	12.7 13.1*	9.2 11.0*								6.9 9.1*	8.6
4.5	25.2*	25.2*	18.5 18.5*	12.4 13.9*	9.1 11.3*			6.4 9.4*					6.2 9.1*	9.2
S-HD														
3.0			22.5* 22.5*	17.9 19.6*	12.2 14.4*			6.3 9.3*					5.8 8.7*	9.4
1.5			14.7* 14.7*	17.7 19.5*	11.6 14.3*			6.2 9.2*					5.7 8.1*	9.5
0	20.8*	20.8*	16.8 19.5*	11.1 14.3*	8.1 11.4*			6.1 8.3*					5.9 7.4*	9.2
-1.5	28.6*	28.6*	16.5 19.4*	10.8 14.4*	7.8 10.8*								6.3 6.3*	8.7
-3.0	25.6*	25.6*	16.5 17.9*	10.7 12.9*	7.4* 7.4*								4.8* 4.8*	7.9
-4.5	19.6*	19.6*	12.6* 12.6*										7.0* 7.0*	6.0
-6.0														
LC-V														
10.5			12.5* 12.5*										12.3* 12.3*	4.2
9.0			13.0* 13.0*	12.4* 12.4*									10.1* 10.1*	6.4
7.5			13.0* 13.0*	12.7* 12.7*	9.5 11.0*								8.6 9.4*	7.8
6.0	17.7*	17.7*	16.3* 16.3*	13.1 13.2*	9.6 11.1*								7.2 9.1*	8.6
4.5	25.0*	25.0*	18.6* 18.6*	12.8 13.9*	9.5 11.3*			6.8 9.4*					6.5 9.1*	9.2
3.0	20.1*	20.1*	18.5 19.6*	12.6 14.4*	9.2 11.4*			6.7 9.3*					6.2 8.6*	9.4
1.5	15.1*	15.1*	18.4 19.5*	12.2 14.3*	8.8 11.3*			6.5 9.2*					6.1 8.0*	9.5
0	21.4*	21.4*	17.7 19.6*	11.7 14.3*	8.5 11.4*			6.4 8.2*					6.2 7.3*	9.2
-1.5	28.4*	28.4*	17.4 19.4*	11.4 14.4*	8.3 10.7*								6.2* 6.2*	8.7
-3.0	25.2*	25.2*	17.5 17.7*	11.3 12.6*	6.8* 6.8*								4.9* 4.9*	7.9
-4.5	18.8*	18.8*	11.7* 11.7*										7.5* 7.5*	6.0
-6.0														

## Stick 3.25 m

Under-carriage	3.0m		4.5m		6.0m		7.5m		9.0m		10.5m		m	
	m	↕	↕	↕	↕	↕	↕	↕	↕	↕	↕	↕		
10.5			12.0* 12.0*										10.6* 10.6*	4.9
9.0					11.3* 11.3*								8.9* 8.9*	6.9
7.5			10.9* 10.9*	11.7* 11.7*	9.2 10.6*								7.7 8.2*	8.2
6.0	10.7*	10.7*	13.5* 13.5*	12.7 12.8*	9.2 10.8*			6.5 8.1*					6.5 8.0*	9.0
4.5	25.7*	25.7*	17.9* 17.9*	12.3 13.6*	9.1 11.1*			6.5 9.3*					5.8 8.0*	9.5
S-HD														
3.0	25.1*	25.1*	17.9 19.4*	12.1 14.2*	8.8 11.3*			6.4 9.3*					5.5 8.2*	9.8
1.5	18.0*	18.0*	17.7 19.3*	11.7 14.2*	8.4 11.2*			6.2 9.2*					5.4 7.7*	9.8
0	20.9*	20.9*	16.8 19.3*	11.1 14.2*	8.1 11.2*			6.0 8.8*					5.5 7.1*	9.6
-1.5	27.2*	27.2*	16.4 19.4*	10.7 14.3*	7.8 11.0*			6.0 6.7*					5.9 6.2*	9.1
-3.0	26.6*	26.6*	16.3 18.3*	10.6 13.5*	7.7 8.8*								4.8* 4.8*	8.3
-4.5	21.4*	21.4*	14.5* 14.5*	8.5* 8.5*									5.9* 5.9*	6.7
-6.0														
LC-V														
10.5			12.1* 12.1*										10.4* 10.4*	4.9
9.0				11.3* 11.3*									8.8* 8.8*	6.9
7.5			11.0* 11.0*	11.7* 11.7*	9.6 10.6*								8.0 8.2*	8.2
6.0	11.6*	11.6*	14.0* 14.0*	12.8 12.8*	9.6 10.8*			6.9 8.5*					6.8 8.0*	9.0
4.5	25.8*	25.8*	18.1* 18.1*	12.8 13.6*	9.5 11.1*			6.9 9.3*					6.1 8.0*	9.5
3.0	25.2*	25.2*	18.5 19.4*	12.5 14.2*	9.2 11.3*			6.7 9.3*					5.8 8.2*	9.8
1.5	17.9*	17.9*	18.3 19.3*	12.2 14.2*	8.9 11.2*			6.6 9.2*					5.7 7.7*	9.8
0	21.3*	21.3*	17.7 19.4*	11.7 14.2*	8.5 11.2*			6.4 8.8*					5.9 7.0*	9.6
-1.5	27.8*	27.8*	17.3 19.4*	11.3 14.3*	8.2 11.0*			6.3* 6.3*					6.1* 6.1*	9.1
-3.0	26.3*	26.3*	17.3 18.2*	11.3 13.3*	8.1 8.4*								4.6* 4.6*	8.3
-4.5	20.8*	20.8*	13.8* 13.8*	7.8* 7.8*									6.2* 6.2*	6.7
-6.0														

## Stick 3.95 m

Under-carriage	3.0m		4.5m		6.0m		7.5m		9.0m		10.5m		m	
	m	↕	↕	↕	↕	↕	↕	↕	↕	↕	↕	↕		
10.5													7.8* 7.8*	6.0
9.0													6.8* 6.8*	7.7
7.5													6.4* 6.4*	8.8
6.0													5.8 6.3*	9.6
4.5	24.7*	24.7*	16.2* 16.2*	12.4 12.9*	9.0 10.6*			6.7 9.0*					5.3 6.4*	10.1
S-HD														
3.0	25.3*	25.3*	17.9 18.6*	12.0 13.7*	8.9 11.0*			6.5 9.1*					5.0 6.6*	10.3
1.5	26.3*	26.3*	17.5 19.2*	11.8 14.1*	8.5 11.0*			6.2 9.0*					4.9 7.0*	10.4
0	22.5*	22.5*	17.0 19.0*	11.1 13.9*	8.1 11.0*			6.0 9.0*					4.9 6.8*	10.1
-1.5	25.6*	25.6*	16.3 19.2*	10.7 14.0*	7.8 11.1*			5.8 8.3*					5.2 6.1*	9.7
-3.0	28.1*	28.1*	16.1 18.8*	10.5 13.9*	7.5 10.0*								5.1* 5.1*	9.0
-4.5	24.4*	24.4*												



# Lift capacities

with mono boom SME 6.15 m, counterweight 8.4 t and track pads 600 mm

## Stick SME 2.15 m

Under-carriage m	3.0m		4.5m		6.0m		7.5m		9.0m		10.5m		m
7.5					11.2*	11.2*					11.2*	11.2*	6.0
6.0					11.4*	11.4*					9.5	10.7*	7.1
4.5			16.1*	16.1*	12.0	12.5*	8.6	10.8*			8.2	10.6*	7.7
3.0			17.2	19.0*	11.4	13.7*	8.3	11.3*			7.5	10.7*	8.0
1.5			16.6	19.2*	11.0	14.6*	8.1	11.6*			7.4	10.8*	8.1
0			16.5	19.3*	10.8	14.6*	8.0	11.5*			7.6	10.9*	7.8
-1.5	19.7*	19.7*	16.6	17.6*	10.8	13.7*					8.5	11.0*	7.2
-3.0	17.4*	17.4*	14.6*	14.6*	11.1	11.1*					10.6*	10.6*	6.2
-4.5													
7.5					11.2*	11.2*					11.2*	11.2*	6.0
6.0			13.6*	13.6*	11.5*	11.5*					9.9	10.7*	7.1
4.5			16.4*	16.4*	12.6*	12.6*	9.0	10.8*			8.5	10.6*	7.7
3.0			18.1	19.2*	12.0	13.8*	8.8	11.3*			7.9	10.7*	8.0
1.5			17.5	19.5*	11.6	14.6*	8.6	11.6*			7.8	10.8*	8.1
0			17.4	19.2*	11.4	14.6*	8.5	11.4*			8.1	10.9*	7.8
-1.5	20.4*	20.4*	17.4*	17.4*	11.4	13.5*					9.1	11.0*	7.2
-3.0	17.0*	17.0*	14.2*	14.2*	10.7*	10.7*					10.5*	10.5*	6.2
-4.5													

## Stick SME 2.60 m

Under-carriage m	3.0m		4.5m		6.0m		7.5m		9.0m		10.5m		m
7.5					10.3*	10.3*					10.3*	10.3*	6.5
6.0					10.7*	10.7*	8.8	10.0*			8.7	9.9*	7.5
4.5			15.0*	15.0*	11.9*	11.9*	8.6	10.3*			7.5	9.9*	8.2
3.0			17.5	18.1*	11.5	13.2*	8.3	10.9*			7.0	10.0*	8.5
1.5			16.7	19.7*	11.0	14.3*	8.1	11.4*			6.8	10.1*	8.5
0			16.4	19.6*	10.8	14.6*	7.9	11.5*			7.0	10.3*	8.2
-1.5	18.5*	18.5*	16.4	18.3*	10.7	14.0*	7.9	10.8*			7.7	10.4*	7.7
-3.0	20.0*	20.0*	15.7*	15.7*	10.9	12.1*					9.4	10.3*	6.8
-4.5			10.8*	10.8*							9.2*	9.2*	5.2
7.5					10.3*	10.3*					10.2*	10.2*	6.5
6.0					10.8*	10.8*	9.3	10.0*			9.0	9.9*	7.5
4.5			15.3*	15.3*	12.0*	12.0*	9.1	10.3*			7.9	9.9*	8.2
3.0			18.3*	18.3*	12.1	13.3*	8.8	10.9*			7.4	10.0*	8.5
1.5			17.6	19.8*	11.6	14.3*	8.5	11.4*			7.2	10.1*	8.5
0			17.3	19.6*	11.4	14.6*	8.4	11.5*			7.5	10.3*	8.2
-1.5	19.4*	19.4*	17.4	18.2*	11.3	13.9*	8.4	10.6*			8.3	10.4*	7.7
-3.0	19.6*	19.6*	15.4*	15.4*	11.5	11.8*					10.1	10.3*	6.8
-4.5													

Height Can be slewed through 360° In longitudinal position of undercarriage Max. reach \* Limited by hydr. capacity

The load values are quoted in tons (t) at stick end (without bucket), and may be swung 360° on firm and even ground. Adjacent values are valid for the undercarriage when in the longitudinal position. Capacities are valid for 600 mm wide track pads. Indicated loads are based on ISO 10567 standard and do not exceed 75% of tipping or 87% of hydraulic capacity (indicated via \*). Without bucket cylinder, link and lever the lift capacities will increase by 590 kg. Lifting capacity of the excavator is limited by machine stability and hydraulic capacity.

According to European Standard, EN 474-5: In the European Union excavators have to be equipped with an overload warning device, a load diagram and automatic safety check valves on hoist cylinders and stick cylinder(s), when they are used for lifting operations which require the use of lifting accessories.

Determine maximum load lift from load lift chart displayed in the operator's cab or from load lift chart detailed in the operator's manual supplied with the machine.

# Lift capacities

with mono boom SME 6.15 m, counterweight 9.4 t and track pads 600 mm

## Stick SME 2.15 m

Under-carriage m	3.0m		4.5m		6.0m		7.5m		9.0m		10.5m		m
7.5					11.2*	11.2*					11.2*	11.2*	6.0
6.0					11.4*	11.4*					10.1	10.7*	7.1
4.5			16.1*	16.1*	12.5*	12.5*	9.2	10.8*			8.7	10.6*	7.7
3.0			18.4	19.0*	12.2	13.7*	8.9	11.3*			8.1	10.7*	8.0
1.5			17.7	19.2*	11.8	14.6*	8.7	11.6*			7.9	10.8*	8.1
0			17.6	19.3*	11.6	14.6*	8.6	11.5*			8.2	10.9*	7.8
-1.5	19.7*	19.7*	17.6*	17.6*	11.6	13.7*					9.1	11.0*	7.2
-3.0	17.4*	17.4*	14.6*	14.6*	11.1*	11.1*					10.6*	10.6*	6.2
-4.5													

## Stick SME 2.60 m

Under-carriage m	3.0m		4.5m		6.0m		7.5m		9.0m		10.5m		m
7.5					10.3*	10.3*					10.3*	10.3*	6.5
6.0					10.7*	10.7*	9.4	10.0*			9.2	9.9*	7.5
4.5			15.0*	15.0*	11.9*	11.9*	9.2	10.3*			8.0	9.9*	8.2
3.0			18.1*	18.1*	12.3	13.2*	8.9	10.9*			7.5	10.0*	8.5
1.5			17.8	19.7*	11.8	14.3*	8.7	11.4*			7.3	10.1*	8.5
0			17.5	19.6*	11.5	14.6*	8.5	11.5*			7.5	10.3*	8.2
-1.5	18.5*	18.5*	17.6	18.3*	11.5	14.0*	8.5	10.8*			8.3	10.4*	7.7
-3.0	20.0*	20.0*	15.7*	15.7*	11.6	12.1*					10.0	10.3*	6.8
-4.5			10.8*	10.8*							9.2*	9.2*	5.2

Height Can be slewed through 360° In longitudinal position of undercarriage Max. reach \* Limited by hydr. capacity

The load values are quoted in tons (t) at stick end (without bucket), and may be swung 360° on firm and even ground. Adjacent values are valid for the undercarriage when in the longitudinal position. Capacities are valid for 600mm wide track pads. Indicated loads are based on ISO 10567 standard and do not exceed 75% of tipping or 87% of hydraulic capacity (indicated via \*). Without bucket cylinder, link and lever the lift capacities will increase by 590 kg. Lifting capacity of the excavator is limited by machine stability and hydraulic capacity.

According to European Standard, EN 474-5: In the European Union excavators have to be equipped with an overload warning device, a load diagram and automatic safety check valves on hoist cylinders and stick cylinder(s), when they are used for lifting operations which require the use of lifting accessories.

Determine maximum load lift from load lift chart displayed in the operator's cab or from load lift chart detailed in the operator's manual supplied with the machine.

# Lift capacities

with mono boom SME 6.45 m, counterweight 8.4 t and track pads 600 mm

## Stick SME 2.15 m

Under-carriage m	3.0m		4.5m		6.0m		7.5m		9.0m		10.5m		m
7.5					10.6*	10.6*					10.5*	10.5*	6.6
6.0					11.1*	11.1*					8.8	10.1*	7.5
4.5			16.2*	16.2*	11.8	12.2*	8.5	10.4*			7.6	10.0*	8.1
3.0					11.2	13.5*	8.2	11.0*			7.0	10.1*	8.4
1.5					10.8	14.3*	8.0	11.4*			6.9	10.2*	8.4
0			16.2	18.7*	10.6	14.4*	7.8	11.4*			7.1	10.3*	8.1
-1.5	15.3*	15.3*	16.3	17.2*	10.6	13.6*	7.9	10.5*			7.8	10.4*	7.5
-3.0	17.0*	17.0*	14.7*	14.7*	10.8	11.5*					9.6	10.2*	6.5
-4.5													
7.5					10.6*	10.6*					10.5*	10.5*	6.6
6.0			13.5*	13.5*	11.2*	11.2*	9.2	10.1*			9.1	10.1*	7.5
4.5			16.5*	16.5*	12.4*	12.4*	9.0	10.5*			8.0	10.0*	8.1
3.0					11.8	13.6*	8.7	11.0*			7.4	10.1*	8.4
1.5					11.4	14.4*	8.4	11.4*			7.3	10.2*	8.4
0			17.1	18.6*	11.2	14.3*	8.3	11.3*			7.6	10.4*	8.1
-1.5	16.8*	16.8*	17.1*	17.1*	11.2	13.5*					8.4	10.4*	7.5
-3.0	16.7*	16.7*	14.4*	14.4*	11.3*	11.3*					10.1*	10.1*	6.5
-4.5													

## Stick SME 2.60 m

Under-carriage m	3.0m		4.5m		6.0m		7.5m		9.0m		10.5m		m
7.5					9.8*	9.8*					9.6*	9.6*	7.1
6.0					10.4*	10.4*	8.8	9.5*			8.0	9.4*	8.0
4.5			15.1*	15.1*	11.7*	11.7*	8.5	10.0*			7.0	9.4*	8.5
3.0			17.1	18.2*	11.3	13.0*	8.2	10.6*			6.5	9.4*	8.8
1.5			16.3	16.5*	10.8	14.1*	7.9	11.2*			6.4	9.6*	8.8
0			16.1	19.2*	10.5	14.4*	7.8	11.3*			6.5	9.8*	8.5
-1.5	15.3*	15.3*	16.1	18.0*	10.5	13.8*	7.7	10.8*			7.1	9.9*	7.9
-3.0	19.5*	19.5*	15.7*	15.7*	10.6	12.2*					8.5	9.8*	7.0
-4.5			11.6*	11.6*							9.1*	9.1*	5.5
7.5					9.9*	9.9*					9.6*	9.6*	7.1
6.0					10.5*	10.5*	9.2	9.5*			8.3	9.4*	8.0
4.5			15.4*	15.4*	11.8*	11.8*	9.0	10.0*			7.4	9.4*	8.5
3.0			17.9	18.4*	11.9	13.2*	8.7	10.7*			6.9	9.4*	8.8
1.5			16.6*	16.6*	11.4	14.1*	8.4	11.2*			6.8	9.6*	8.8
0			17.0	19.1*	11.2	14.3*	8.2	11.3*			7.0	9.8*	8.5
-1.5	16.3*	16.3*	17.1	17.8*	11.1	13.7*	8.2	10.7*			7.7	9.9*	7.9
-3.0	19.2*	19.2*	15.4*	15.4*	11.3	12.0*					9.2	9.8*	7.0
-4.5			11.1*	11.1*							9.0*	9.0*	5.5

Height Can be slewed through 360° In longitudinal position of undercarriage Max. reach \* Limited by hydr. capacity

The load values are quoted in tons (t) at stick end (without bucket), and may be swung 360° on firm and even ground. Adjacent values are valid for the undercarriage when in the longitudinal position. Capacities are valid for 600mm wide track pads. Indicated loads are based on ISO 10567 standard and do not exceed 75% of tipping or 87% of hydraulic capacity (indicated via \*). Without bucket cylinder, link and lever the lift capacities will increase by 590 kg. Lifting capacity of the excavator is limited by machine stability and hydraulic capacity.

According to European Standard, EN 474-5: In the European Union excavators have to be equipped with an overload warning device, a load diagram and automatic safety check valves on hoist cylinders and stick cylinder(s), when they are used for lifting operations which require the use of lifting accessories.

Determine maximum load lift from load lift chart displayed in the operator's cab or from load lift chart detailed in the operator's manual supplied with the machine.

# Lift capacities

with mono boom SME 6.45 m, counterweight 9.4 t and track pads 600 mm

## Stick SME 2.15 m

Under-carriage m	3.0m		4.5m		6.0m		7.5m		9.0m		10.5m		m
7.5					10.6*	10.6*					10.5*	10.5*	6.6
6.0					11.1*	11.1*					9.3	10.1*	7.5
4.5			16.2*	16.2*	12.2*	12.2*	9.1	10.4*			8.1	10.0*	8.1
3.0					12.0	13.5*	8.8	11.0*			7.5	10.1*	8.4
1.5					11.5	14.3*	8.5	11.4*			7.4	10.2*	8.4
0			17.3	18.7*	11.3	14.4*	8.4	11.4*			7.6	10.3*	8.1
-1.5	15.3*	15.3*	17.2*	17.2*	11.4	13.6*	8.5	10.5*			8.4	10.4*	7.5
-3.0	17.0*	17.0*	14.7*	14.7*	11.5*	11.5*					10.2*	10.2*	6.5
-4.5													
7.5					10.6*	10.6*					10.5*	10.5*	6.6
6.0			13.5*	13.5*	11.2*	11.2*	9.7	10.1*			9.7	10.1*	7.5
4.5			16.5*	16.5*	12.4*	12.4*	9.5	10.5*			8.5	10.0*	8.1
3.0					12.6	13.6*	9.2	11.0*			7.9	10.1*	8.4
1.5					12.1	14.4*	9.0	11.4*			7.8	10.2*	8.4
0			18.3	18.6*	12.0	14.3*	8.9	11.3*			8.1	10.4*	8.1
-1.5	16.8*	16.8*	17.1*	17.1*	12.0	13.5*					9.0	10.4*	7.5
-3.0	16.7*	16.7*	14.4*	14.4*	11.3*	11.3*					10.1*	10.1*	6.5
-4.5													

## Stick SME 2.60 m

Under-carriage m	3.0m		4.5m		6.0m		7.5m		9.0m		10.5m		m
7.5											9.8*	9.8*	7.1
6.0					10.4*	10.4*	9.4	9.5*			9.6*	9.6*	8.0
4.5			15.1*	15.1*	11.7*	11.7*	9.1	10.0*			7.5	9.4*	8.5
3.0			18.2*	18.2*	12.1	13.0*	8.8	10.6*			7.0	9.4*	8.8
1.5			16.5*	16.5*	11.6	14.1*	8.5	11.2*			6.8	9.6*	8.8
0			17.2	19.2*	11.3	14.4*	8.3	11.3*			7.0	9.8*	8.5
-1.5	15.3*	15.3*	17.3	18.0*	11.2	13.8*	8.3	10.8*			7.7	9.9*	7.9
-3.0	19.5*	19.5*	15.7*	15.7*	11.4	12.2*					9.1	9.8*	7.0
-4.5			11.6*	11.6*							9.1*	9.1*	5.5
7.5					9.9*	9.9*					9.6*	9.6*	7.1
6.0					10.5*	10.5*	9.5*	9.5*			8.5	9.4*	8.0
4.5			15.4*	15.4*	11.8*	11.8*	9.6	10.0*			7.8	9.4*	8.5
3.0			18.4*	18.4*	12.6	13.2*	9.2	10.7*			7.4	9.4*	8.8
1.5			16.6*	16.6*	12.2	14.1*	9.0	11.2*			7.2	9.6*	8.8
0			18.2	19.1*	11.9	14.3*	8.8	11.3*			7.5	9.8*	8.5
-1.5	16.3*	16.3*	17.8*	17.8*	11.9	13.7*	8.8	10.7*			8.2	9.9*	7.9
-3.0	19.2*	19.2*	15.4*	15.4*	12.0*	12.0*					9.8	9.8*	7.0
-4.5			11.1*	11.1*							9.0*	9.0*	5.5

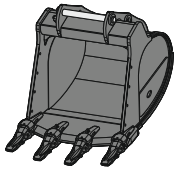
Height Can be slewed through 360° In longitudinal position of undercarriage Max. reach \* Limited by hydr. capacity

The load values are quoted in tons (t) at stick end (without bucket), and may be swung 360° on firm and even ground. Adjacent values are valid for the undercarriage when in the longitudinal position. Capacities are valid for 600 mm wide track pads. Indicated loads are based on ISO 10567 standard and do not exceed 75% of tipping or 87% of hydraulic capacity (indicated via \*). Without bucket cylinder, link and lever the lift capacities will increase by 590 kg. Lifting capacity of the excavator is limited by machine stability and hydraulic capacity.

According to European Standard, EN 474-5: In the European Union excavators have to be equipped with an overload warning device, a load diagram and automatic safety check valves on hoist cylinders and stick cylinder(s), when they are used for lifting operations which require the use of lifting accessories.

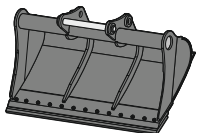
Determine maximum load lift from load lift chart displayed in the operator's cab or from load lift chart detailed in the operator's manual supplied with the machine.

# Attachments



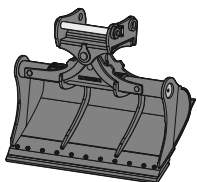
## Backhoe bucket TL 06

Mounting		direct mounting, SWA 66 mechanical, SWA 66 hydraulic, SWA 66 Solidlink									
Cutting width	mm	1,050 <sup>2)</sup>	1,200	1,350	1,500	1,600	1,600	1,650	1,800	1,800	1,850
Capacity	m <sup>3</sup>	1.00	1.25	1.50	1.75	1.90	2.15	2.00	2.50	2.75	3.00
Weight <sup>1)</sup>	kg	1,125	1,270	1,355	1,440	1,640	1,700	1,600	1,830	1,880	1,940



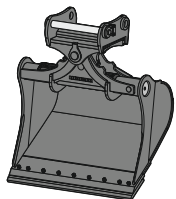
## Ditch cleaning bucket GRL rigid 06

Mounting		direct mounting, SWA 66 mechanical, SWA 66 hydraulic, SWA 66 Solidlink									
Cutting width	mm	2,200		2,400		2,800		2,800			
Capacity	m <sup>3</sup>	1.65		1.50		2.60		2.90			
Weight <sup>1)</sup>	kg	1,050		964		1,522		1,561			



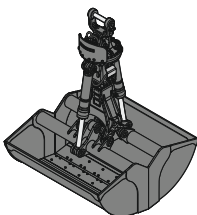
## Ditch cleaning bucket GRL 100

Mounting		direct mounting, SWA 66 mechanical, SWA 66 hydraulic, SWA 66 Solidlink									
Cutting width	mm	2,000	2,000	2,000	2,200	2,400	2,400				
Capacity	m <sup>3</sup>	0.70	1.20	1.45	1.65	0.85	1.45				
Weight <sup>1)</sup>	kg	1,375	1,520	1,600	1,675	1,480	1,625				
Tilt angle		2 x 50°	2 x 50°	2 x 50°	2 x 50°	2 x 50°	2 x 50°				



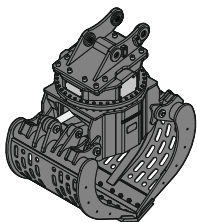
## Tilt bucket SL 100

Mounting		direct mounting, SWA 66 mechanical, SWA 66 hydraulic, SWA 66 Solidlink									
Cutting width	mm	1,600	1,600	1,700 <sup>3)</sup>	1,800	1,800 <sup>3)</sup>					
Capacity	m <sup>3</sup>	1.45	1.75	1.85	1.60	2.00					
Weight <sup>1)</sup>	kg	1,520	1,630	1,800	1,610	1,860					
Tilt angle		2 x 50°	2 x 50°	2 x 50°	2 x 50°	2 x 50°					



## Clamshell grab GMZ 80 with clamshell buckets

Mounting		direct mounting, SWA 66 mechanical, SWA 66 hydraulic, SWA 66 Solidlink, SWA 77 mechanical, SWA 77 hydraulic									
Shell width	mm	1,200	1,200	1,400	1,400	1,650	1,650	2,000	2,000		
Capacity <sup>4)</sup>	m <sup>3</sup>	1.40	1.40	1.70	1.70	2.00	2.00	2.50	2.50		
Opening width	mm	2,128	2,128	2,128	2,128	2,128	2,128	2,128	2,128		
Weight <sup>5)</sup>	kg	2,170 <sup>6)</sup>	2,130	2,275 <sup>6)</sup>	2,225	2,415 <sup>6)</sup>	2,345	2,595 <sup>6)</sup>	2,520		



## Sorting grab SG 40

Mounting		direct mounting, SWA 66 mechanical, SWA 66 hydraulic, SWA 66 Solidlink, SWA 77 mechanical, SWA 77 hydraulic, SWA 77 Solidlink									
Shell type		perforated					ribbed				
Shell width	mm	1,100		1,300		1,100		1,300			
Capacity	m <sup>3</sup>	1.30		1.60		1.10		1.40			
Max. closing force	kN	100		100		100		100			
Weight <sup>7)</sup>	kg	2,505		2,595		2,585		2,695			

<sup>1)</sup> based on an attachment in a standard design with SWA 66 Solidlink quick coupler mounting

<sup>2)</sup> for SWA 66 quick coupler mounting only

<sup>3)</sup> HD version

<sup>4)</sup> capacity specifications are theoretically determined values; fill level varies depending on the material being loaded

<sup>5)</sup> with XHD suspension

<sup>6)</sup> incl. teeth

<sup>7)</sup> with standard bolt-on cutting edge, without quick coupler mounting

# Serial equipment



## Undercarriage

- Lashing eyes
- Sprocket with dirt ejector
- Track and carrier rollers, sealed and lifetime-lubricated



## Uppercarriage

- Access platforms without protruding parts
- Anti-skid surfaces
- Automatic swing brake lock
- Centralised lubrication system (automatic)
- DEF tank filling indicator
- DEF tank lockable access hatch
- Engine hood with gas spring opening
- Filters accessible from ground level
- Handrails
- Hydraulic oil level, visible from ground level
- Lockable service doors
- Lockable storage and accessories compartment
- Lockable storage box
- Main switch, accessible from ground level
- Main switch, electric, with timer
- Main switch, manual, lockable
- Positioning swing brake manual
- Protection grid on radiator fan
- Safe uppercarriage side access platform
- Sound insulation
- Swing-out radiators
- Windshield washer fluid tank, accessible from ground level



## Hydraulic system

- Dedicated swing circuit
- Filter with integrated fine filters
- Hydraulic pressure measuring ports
- Liebherr Positive Control system with 2 independent circuits
- Magnetic rod
- Pressure accumulator for controlled lowering of equipment with engine turned off



## Engine

- Air filter with automatic dust ejector
- Automatic engine idling / speed increase, controlled via joystick sensors
- Common-Rail injection system
- Engine oil level gauge
- Exhaust gas after-treatment system – DOC + SCR Filter
- Fixed geometry turbocharger
- Fuel fine filter
- Fuel pre-filter and water separator
- Fuel priming pump
- Intercooler
- Power Pack EU Stage V



## Cab

- 9" multifunction colour touchscreen
- Air conditioning, automatic, tri-zone, controlled via display
- Armrests adjustable in length, height and inclination
- Bottle holder
- Cab air filters housing, accessible from ground level
- Cab door sliding windows
- Cigarette lighter
- Coat hook
- DEF consumption on touchscreen
- DEF level on touchscreen
- Electric socket in cab (12V)
- Electric socket in cab (24 V)
- Emergency hammer
- Engine coolant level, visible from the cab
- Engine oil level on touchscreen
- Fuel consumption on touchscreen
- Fuel level on touchscreen
- Hydraulic oil level on touchscreen
- Interior lighting
- Laminated right hand side window
- LiDAT Plus (Liebherr data transfer system)
- Mechanical hour meter, visible from ground level
- Mobile phone storage net
- Movement priority between swing and boom, adjustable via touchscreen
- Movement priority for stick-in, adjustable via touchscreen
- Operating modes
- Power modes
- Rain hood over front window opening
- Rearview mirror
- Rear view monitoring camera
- Rear window emergency exit
- Right hand side view monitoring camera
- Roll-down sun blinds for windscreen and roof window
- ROPS safety cab structure (ISO 12117-2)
- Rubber floor mat, fixed on floor and removable
- Shortcut buttons on joystick configurable
- Stepless adjustable engine speed
- Storage box
- Storage nets
- Storage spaces
- Swing braking torque adjustable via touchscreen
- Swing drive gearbox oil level, visible from the cab
- Tilttable console left
- Tinted windows
- Visco-elastic damping
- Windscreen wiper and washer



## Equipment

- Anti-drift system boom cylinders
- Anti-drift system stick cylinder
- Boom cylinders regeneration
- Pivot points made of cast steel
- SAE split flanges on high pressure lines
- Stick cylinder regeneration

# Equipment standard / option

## Undercarriage

Chain guide 3 pieces	●
Chain guide 4 pieces	+
Chain guide full length	+
Cover and base plate for undercarriage centre section	●
Reinforced cover and base plate for centre section (LC-V undercarriage)	+
Reinforced cover plate for centre section (LC-V undercarriage)	+
Screws protection for sideframe (LC-V undercarriage)	+
Special painting	+
Steps	●
Steps wide	+
Track chains cleaner (S-HD undercarriage)	+
Track pads triple grouser reinforced 600 mm	●
Track pads triple grouser reinforced 750 / 900 mm	+
Tracks, sealed and greased, reinforced	●
Travel drive gearbox protection	+
Travel motor housing protection	+
Undercarriage LC-V	+
Undercarriage S-HD	+
Undercarriage storage compartment (S-HD undercarriage)	+

## Uppercarriage

Batteries high capacity	+
Batteries standard capacity	●
Boxing ring	+
Catwalk tiltable front left	+
Counterweight heavy 9.4 t	+
Counterweight standard 8.4 t	●
Electric socket on uppercarriage (24 V)	+
Extended tool set including tool box	+
External starting aid (24 V)	+
Front right rearview mirror	+1)
Fuel anti-theft protection	+
Headlight on uppercarriage, front left, LED+, 1 piece, protection included	+1)
Headlight on uppercarriage, front right, LED, 1 piece, protection included	●1)
Headlight on uppercarriage, front right, LED+, 1 piece, protection included	+1)
Headlight on uppercarriage, lateral left, LED+, 1 piece	+1)
Headlight on uppercarriage, lateral right, LED+, 1 piece	+1)
Headlights on uppercarriage, rear, LED+, 2 pieces	+1)
Lighting for tank area	+1)
Lighting for uppercarriage access	+1)
Lockable fuel tank cap	●
Lockable fuel tank cap with padlock	+
Reflective warning stickers	+
Rotating beacons on uppercarriage, rear, LED, 2 pieces	+
Skyview 360°	+
Special painting	+
Tank refilling pump fuel	+
Tool set including storage case	●
Uppercarriage bottom and side protection	+
Uppercarriage bottom closure sheets	●

## Hydraulic system

Bypass filter for hydraulic oil	+
Filter for hydraulic hammer return flow	+
High pressure circuit bypass	+
High pressure circuit flow summation	+
High pressure circuit switchable on pedals or mini-joystick	+
High pressure circuit with Tool Control (20 attachment adjustments on display)	+
Leak oil line for attachment	+
Liebherr hydraulic oil	●
Liebherr hydraulic oil, adapted for extreme climate conditions	+
Liebherr hydraulic oil, biodegradable	+
Medium pressure circuit	+

## Engine

Air pre-filter with cyclonical dust trap	+
Automatic engine shutdown after idling	+
Engine shut-down with overrun	+
Lighting for engine compartment	+1)
Preheating fuel	+
Radiator fine mesh protection grid	+
Reversible fan drive	+



## Cab

2" seat belt with retractor	●
3" seat belt with retractor, orange colour	+
4-points seat belt	+
Acoustic travel alarm deactivatable	+
Auxiliary heater programmable	+
Bottom windscreen wiper	+
Coming / Leaving Home	+ <sup>1)</sup>
Cool box (12V)	+
Dark tinted windows	+
Electrically adjustable and heated outside rear-view mirrors	+ <sup>1)</sup>
Electronic immobiliser	+
Emergency stop in cab	+
FGPS front guard	+
FGPS front guard tiltable	+
Fire extinguisher	+
First-aid box	+
Footrest	+
FOPS top guard	+
FOPS top guard flat	+
Handrests elevated for joysticks	+
Headlights on cab, front, LED, 2 pieces	● <sup>1)</sup>
Headlights on cab, front, LED+, 2 pieces	+ <sup>1)</sup>
Headlights on cab roof, front, LED+, 2 pieces	+ <sup>1)</sup>
Impact resistant one-piece windscreen	+
Impact resistant roof window	+
Independent travel	+ <sup>1)</sup>
Integral protection guard	+
Laminated roof window	●
Lightbar on cab	+
Lighting for cab access	+ <sup>1)</sup>
Luminosity control (LED+ headlights)	+
Mini-joysticks proportional	+
Movement restriction for boom	+
Movement restriction for stick	+
Operator's seat Comfort	●
Operator's seat Premium	+
Overload warning system	+
Personalised operator profile	+
Preparation for tiltrotator	+
Radio Comfort	+
Radio pre-installation	●
Remote cab lock	+ <sup>1)</sup>
Retractable laminated two-piece windscreen	●
Roof sun shield	+
Roof window wiper	+
Rotating beacon on cab, LED, 1 piece	+
Seat belt reminder	+
Smart Key	+ <sup>1)</sup>
Special painting	+
Straight travel via mini-joystick	+ <sup>1)</sup>
Sun visor	+
Switch between high pressure and bucket cylinder controls	+
Travel speed management	+ <sup>1)</sup>
Windscreen bottom protection grid	+



## Equipment

Boom bottom protection	+
Boom cylinders rod protection	+
Bucket cylinder rod protection	+
Centralised lubrication extended for connecting link	+
Floating boom	+
Grapple hydraulic lines (bucket cylinder inactive)	+
Headlight guard on boom, right	+
Headlight guards on boom, right and left	+
Headlight on boom, left, LED+, 1 piece	+ <sup>1)</sup>
Headlight on boom, right, LED, 1 piece	● <sup>1)</sup>
Headlight on boom, right, LED+, 1 piece	+ <sup>1)</sup>
Headlight on stick, bottom, LED+, 1 piece	+ <sup>1)</sup>
Hydraulic hose guard Solidlink	+
Liebherr bucket range	+
Liebherr tooth system	+
Load holding valve for bucket cylinder	+
Lubrication hoses protection on stick	+
Mono boom 6.45m	+
Mono boom SME 6.15m	+
Mono boom SME 6.45m	+
Mono boom straight 7.00m	+
Pipe fracture safety valve for stick cylinder	●
Pipe fracture safety valves for boom cylinders	●
Quick coupler SWA 66 hydraulic	+
Quick coupler SWA 66 mechanical	+
Solidlink electric signal plug	+
Solidlink for quick coupler SWA 66 hydraulic	+
Special painting	+
Stick 2.60m	+
Stick 2.90m	+
Stick 3.25m	+
Stick 3.95m	+
Stick bottom protection	+
Stick SME 2.15m	+
Stick SME 2.60m	+
Tool Management	+
Two-piece boom 6.70m	+



## Assistance system

Machine guidance system Leica 2D passive - "3D ready"	+
Machine guidance system Leica 2D semi-automatic - "3D ready"	+
Machine guidance system Leica 3D passive	+
Machine guidance system Leica 3D semi-automatic	+
Preparation for machine guidance system	+
Preparation for weighing system	+

● = Standard, + = Option

<sup>1)</sup> Equipment not individually available, but only as predefined packages

Non-exhaustive list, please contact us for further information.

Options and /or special equipment, supplied by vendors other than Liebherr, are only to be installed with the knowledge and approval of Liebherr in order to retain warranty.

# The Liebherr Group



## Global and independent: more than 75 years of success

Liebherr was founded in 1949 when, with the development of the world's first mobile tower crane, Hans Liebherr laid the foundations for a family-run company which now has more than 50,000 employees and comprises over 150 companies across every continent. The holding company of the Group is Liebherr-International AG in Bulle, Switzerland, whose shareholders are exclusively members of the Liebherr family.

## Technology leadership and pioneering spirit

Liebherr is a pioneer and its forward-looking approach has seen it make important contributions to technology history over a wide variety of industries. Employees throughout the world continue to share the courage of the company founder, sharing a passion to produce innovative products and a determination to provide world-leading equipment and machinery.

## Diversified product programme

Liebherr is one of the world's biggest construction machine manufacturers and provides high-quality, user-oriented products and services. Its product range includes the product segments earthmoving, material handling, deep foundation, mining, mobile and crawler cranes, tower cranes, concrete technology, maritime cranes, aerospace and transportation systems, gear technology and automation systems, refrigerators and freezers, components and hotels.

## Customised solutions and maximum customer value

Liebherr solutions are characterised by precision, implementation and longevity. The company is committed to technological excellence and to providing customers with solutions that match their needs exactly. For Liebherr, customer focus does not end with delivery of a product but continues through a comprehensive range of back-up and support services.

[www.liebherr.com](http://www.liebherr.com)

## Liebherr-France SAS

2 avenue Joseph Rey, B.P. 90287 • 68005 Colmar Cedex, France • Phone +33 389 213030  
info.lfr@liebherr.com • [www.liebherr.com](http://www.liebherr.com) • [www.facebook.com/LiebherrConstruction](https://www.facebook.com/LiebherrConstruction)