

---

# Standard excavators for earthmoving

---

## **LIEBHERR**

Crawler excavators



# The range



120 to 220 kW  
163 to 299 HP



0.55 to 3.00 m<sup>3</sup>



22 to 48 t

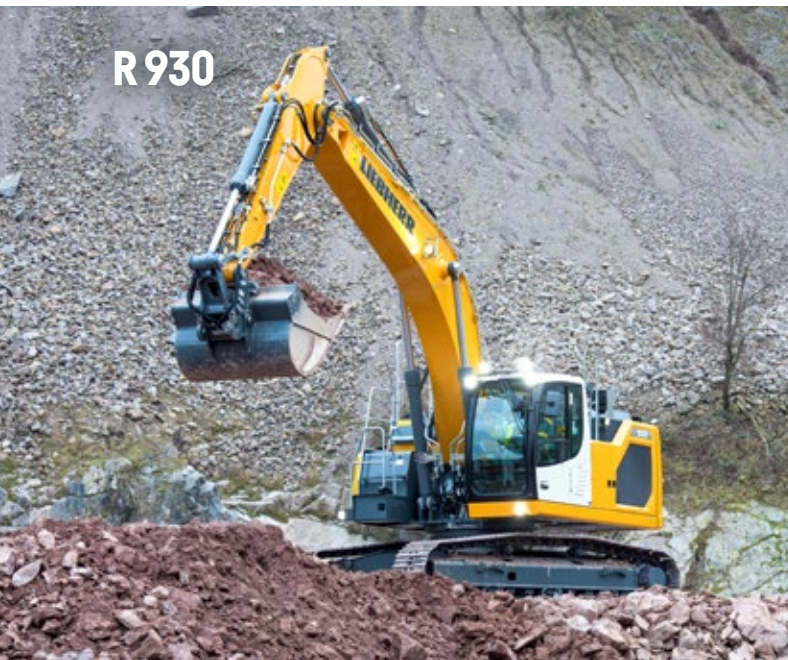
R 922



R 924



R 930



R 934



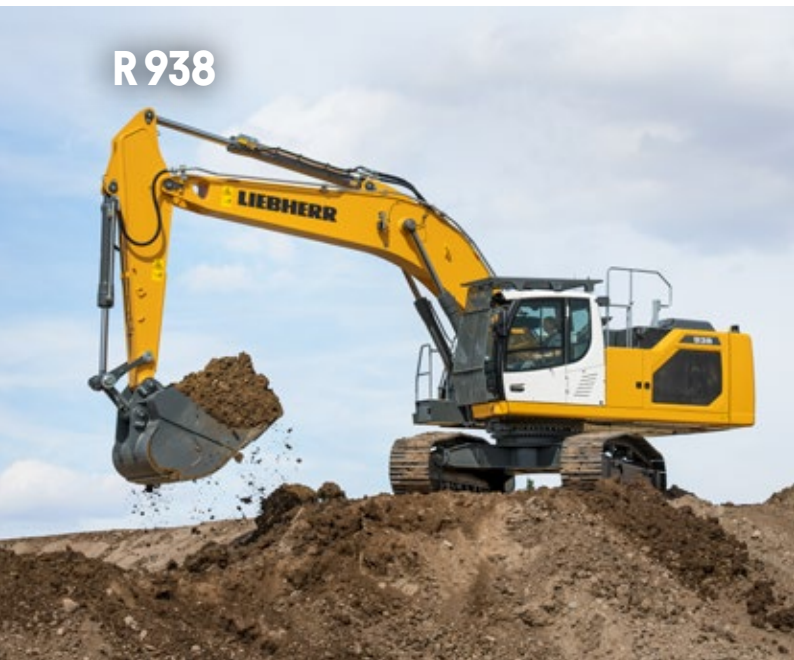
R 926



R 928



R 938



R 945



**Productivity**

**Reliability**

**Safety**



A yellow and white excavator is shown in profile, working on a steep, rocky hillside. The excavator's arm is partially visible on the left. The background features a dramatic sky with dark, heavy clouds and a bright patch of light. The overall scene conveys a sense of ruggedness and industrial power.

**Performance**

**Comfort**

**Easy  
maintenance**

Productivity

# Innovative technology

## New Modetronic operating modes

- Hydraulic performance adapted to the application and the operator's driving style
- Maximum operator comfort and increased productivity
- Control of all machine movements: swing, travel, boom, stick and bucket

**EFFICIENT**

For balanced machine performance (default mode)

To facilitate precision work

**FINE**

**DYNAMIC**

For more dynamic machine performance

To adapt individual movements via the display according to the application or the operator's preferences

**CUSTOM**



Discover the **Modetronic** video



**Up to 10%**  
reduction in  
fuel consumption



#### **Assistance systems**

- Bucket Fill Assist (BFA) – Semi-automatic bucket filling
- Weighting system
- Leica machine control system
- Skyview 360° – Monitoring cameras
- Smart Travel
  - > Right translation
  - > Independent translation
  - > Translation speed control

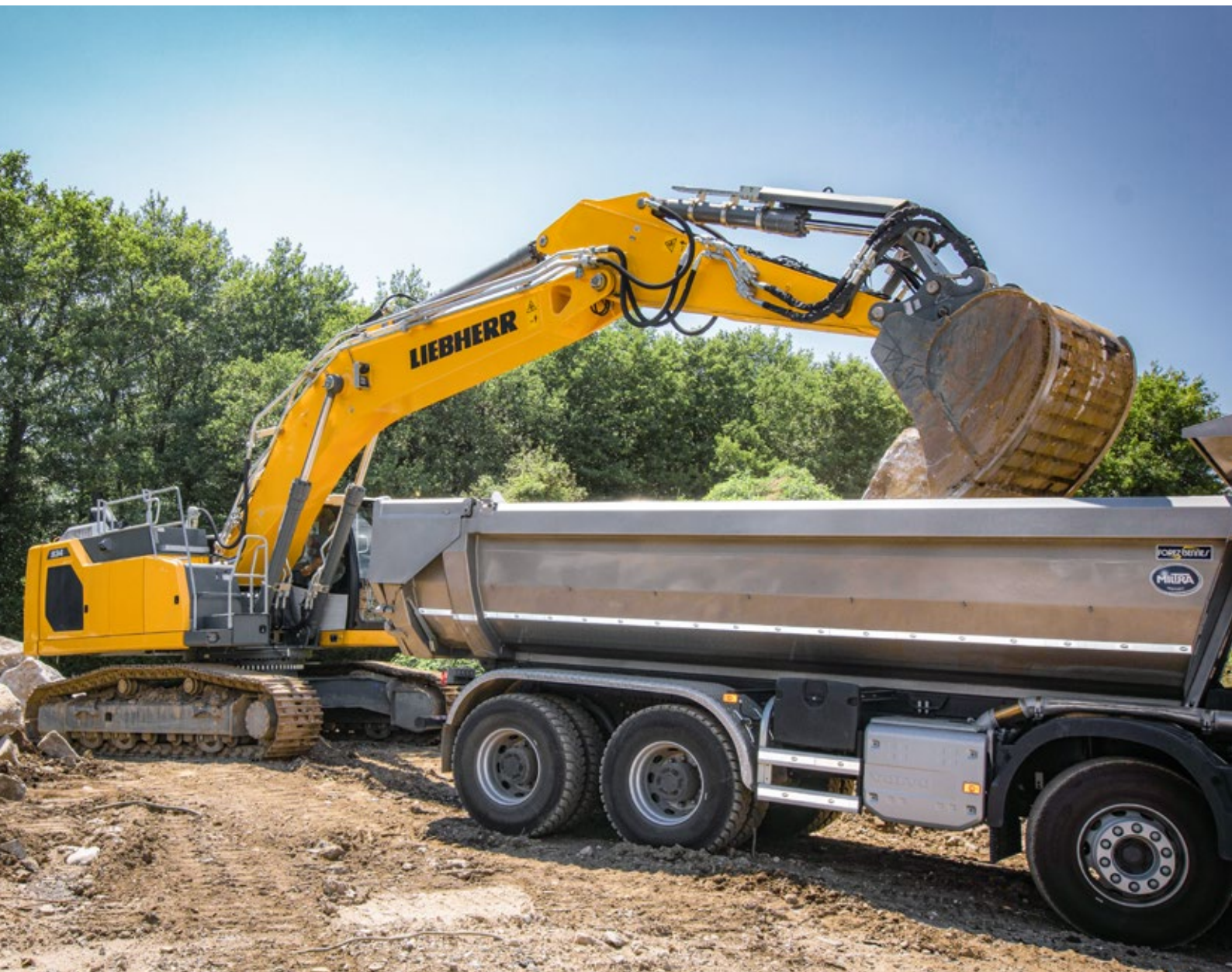


#### **Electronically controlled joysticks**

- Optimal fine control
- Control sensitivity setting for each operator and application profile
- No more hydraulic circuits in the cab for greater safety and comfort
- Extremely precise movements

Dependability

# Long-lasting performance



Designed and manufactured  
**in Europe**



- New working attachment concept for more dependability
- Lighter and yet more durable cast components
- Optimised design for better stress distribution
- Attachments optimised for less inertia during rotation
- Increased bucket sizes and lifting capacities



#### Attachments

- Large number of attachment configurations available
- More robust optimised mounting system for hydraulic lines and cabling on the boom
- Reduced front slewing radius for more compactness and better safety on site



#### Liebherr components

- Hydraulic (pumps, motors, transmission)
- Hydraulic cylinders
- Electronic (control unit, touchscreen, camera)
- Swing ring



#### Undercarriage

- Various dimensions (gauge and length) available
- Different types of construction:
  - > mechanically welded (fixed gauge)
  - > bolted (variable gauge)
- Waterproof, permanently lubricated swing ring and carrier rollers
- Permanently lubricated crown wheel gearing
- Easier cleaning of side frames thanks to the optimised shape and positioning of the steps
- Robust X-shaped design

Performance

# Advanced hydraulic system

---



**High digging and  
break-out forces**



# Combined movements

## Optimised integrated flow summation

- Optimised system for enhanced boom, stick and bucket movement combinations
- Maximum movement speed
- Attachment movements possible during travel without loss of sensitivity
- Designed for use of hydraulic tool attachments (mill, shear etc.)

## Three-pump hydraulic system

- Closed-circuit swing pump for energy recovery
- More fluid, faster combined movements
- Low fuel consumption thanks to positive control (electronic distributor control)



***The R 930 – the best excavator I have ever operated***

Sébastien DEREZ,  
Operator at Carrières Champenoises

## Safety

# Operator protection



### New uppercarriage access design

- Easy and completely safe side access without walking on the track
- Handrails as standard for maximum operator protection
- Wide, perfectly flat platform with anti-slip covering featuring stamped studs
- Integrated, protected front right uppercarriage headlight for maximum view
- Lockable storage box



### Parts accessible from ground level

- Fuel pre-filter
- Fuel fine filter
- Bypass filter for hydraulic oil (optional)
- Engine air filter, tilted downwards for ergonomic cartridge removal without using tools
- Cab air filter housing
- Timer-operated battery main switch





Comfort  
**Cab**

---



**Maximum comfort and ergonomics**

## **Working environment**

### **Optimal operator comfort**

- Spacious, modern cab, fully sound- and vibration-proofed
- Ideal working conditions and optimal view of the tool attachment
- Windscreen wiper on bottom of windscreen
- Large, high-resolution 9" colour touchscreen
- Fluid levels visible on touchscreen
- Tri-zone automatic air conditioning



### Headlight packs

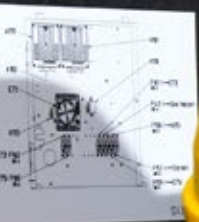
- Premium LED+ headlight packs
- LED service headlight packs for optimal view of uppercarriage access, filling zones and engine compartment
- Surround LED+ headlight pack for perfect illumination of the working area
- Timer-operated Coming/Leaving home lighting

### Optional

- Cab pressurisation
- FGPS/FOPS protective grilles
- High-quality heated and ventilated anti-sweat seats (passive system)
- Four-point safety belt

Easy maintenance

**Fast, safe working**



**24/7**  
Operation

# 729 liters\*

## The biggest fuel tank on the market

- Less downtime for refuelling
- Up to 24 hours of operation possible without refuelling

\* model R 938



**Liebherr Connect**

### Responsive, high-performance after-sales support

- After-sales support services that can be tailored to requirements
- A large number of plans are available to deliver the most effective and economical solution, with manufacturer's quality standards and guarantee
- Our Services team technicians have the latest diagnostic tools to ensure less machine downtime

### Liebherr Connect – connecting man, machine and environment

- Liebherr Connect provides access to machine data and digital solutions and services
- Customers and partners are then equipped to deal with all fleet or asset management systems, of whatever type
- Liebherr Connect: the basis for machine networking and another milestone in digitalisation

### Ergonomic access and time saved

- Levels of fluids such as motor oil and urea solution can be checked quickly and easily via the screen in the cab
- Automatic central lubrication system to minimise the time required for lubrication and ensure optimal machine operating status
- Side handrails running around the entire operator movement area
- Boxing Ring (integrated peripheral railing) available ex-works (optional)
- Coolant level visible from the cab
- Translucent slewing gear oil tank with level visible from the cab
- Swivel radiators that can be opened without tools for easier cleaning

## The Essential Assistance Pack

# Available assistance systems

---

### Standard 2D machine guidance system

Liebherr machine guidance revolutionises your construction sites: levelling and digging assistance, directly integrated into the main screen, offers an **intuitive experience** thanks to a colour-coded visual display.

Benefit from remarkable accuracy of  $\pm 2$  cm and a multitude of configurable tools to suit every project. Thanks to its scalability, the 2D guidance system can be easily upgraded with Leica 3D-ready, passive 3D or semi-automatic options to support all your ambitions.

#### Result:

**Increased productivity, enhanced safety** through the definition of target projects, and **unrivalled ease of use** thanks to a unique and simplified interface.



### Standard Bucket Fill Assist (BFA)

The Bucket Fill Assist (BFA) system, or semi-automatic bucket filling, enables **semi-automated excavation**: a simple movement of the joystick is all it takes to optimise each cycle, effortlessly. Take advantage of 500 hours free of charge to discover the performance of this innovation, available as standard ex-works or via a software update.

#### Result:

**Maximum productivity** thanks to optimal, semi-automatic and repeatable filling, **increased profitability** through reduced operating costs, particularly in fuel, and **unrivalled ease of use** thanks to the Anti-Stalling function, which prevents the bucket from jamming, for uncompromising efficiency.

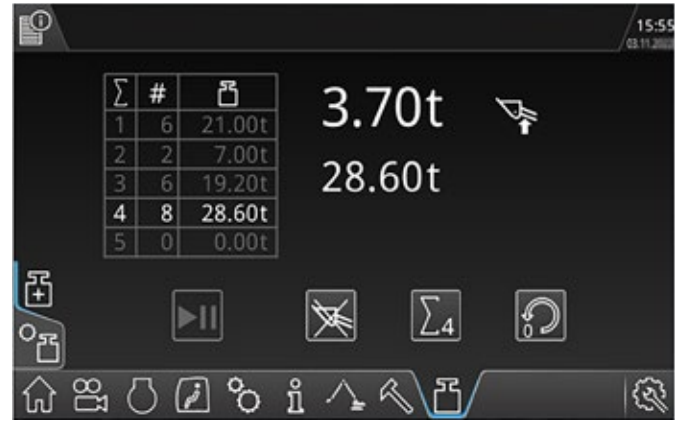


### Standard Liebherr weighing system

The Liebherr weighing system, fully integrated into the main screen, measures the weight of the material in real time throughout the loading cycle. Thanks to automatic data documentation via Liebherr Connect (depending on licences), you benefit from **optimal monitoring of your operations**. Take advantage of 500 free trial hours to test this innovation, available as an option ex-works or via software update.

#### Result:

**Maximum productivity** thanks to optimal truck filling, **increased profitability** by avoiding potential fines, and **enhanced safety** by eliminating any risk of overloading.



### Skyview 360°

The Skyview 360° system takes safety on your construction sites to the next level: with four high-resolution, wide-angle heated cameras, it provides **panoramic visibility with no blind spots**, even in cold weather. Select one of six separate views or enjoy a 360° aerial view, reconstructed by computer and projected onto an adjustable auxiliary screen, to monitor the machine's surroundings with complete peace of mind. Available as a factory option or as a retrofit, this system ensures **early detection of obstacles**, **optimal visibility** in the tightest areas and **enhanced safety** for your teams.

The Skyview 360° kit is available as a retrofit and is compatible with all Liebherr G8 crawler excavators. It includes all the necessary cameras, computers, screens and accessories, and can be easily installed to replace existing cameras.



## New products

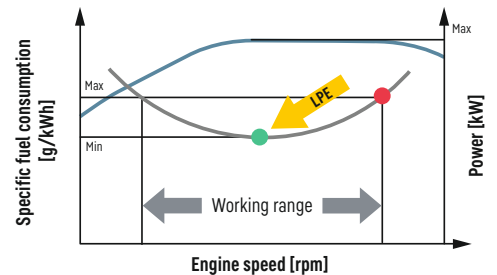
# Expanded equipment catalogue

### LPE mode (Liebherr Power Efficiency)

LPE mode, a true embodiment of on-board intelligence, revolutionises energy management: this patented system continuously optimises the interaction between the diesel engine and the working hydraulics, **reducing fuel consumption by up to 10 %** without compromising productivity.

This mode is easy to activate, memorises your settings and **provides a temporary boost** for key movements, while ensuring fast, precise operations that are perfectly suited to each job site.

### Liebherr Power Efficiency (LPE)



- Perfect operating point with LPE
- Operating point without LPE
- Output
- Specific fuel consumption

In P+ mode, maximum power is achieved without activating LPE mode. Example of engine curve given for P+ mode. The logic is the same for E and P modes.



### New urea solution filling pump

The new urea solution filling pump from Liebherr is a must-have innovation: it allows **safe and ergonomic filling** directly from the ground, eliminating any risk of spillage and pollution, while protecting the machine from corrosion. This ingenious system also **saves valuable time** with every operation.

Unique on the market, this exclusive Liebherr pump eliminates the need to **climb up or down the uppercarriage**, making it a real differentiating feature. It is also fully compatible with the fuel filling pump.



LIEBHERR

945

# The standard excavator range

<b>R 922</b>		
Engine power	kW/HP	120 / 163
Operating weight	kg	22,250–24,550
Bucket capacity	m <sup>3</sup>	0.55–1.65

<b>R 924</b>		
Engine power	kW/HP	129 / 175
Operating weight	kg	23,400–26,050
Bucket capacity	m <sup>3</sup>	0.55–1.65

<b>R 926</b>		
Engine power	kW/HP	150 / 204
Operating weight	kg	26,500–28,950
Bucket capacity	m <sup>3</sup>	0.55–1.75

<b>R 928</b>		
Engine power	kW/HP	150 / 204
Operating weight	kg	28,950–31,500
Bucket capacity	m <sup>3</sup>	0.55–1.85

<b>R 930</b>		
Engine power	kW/HP	180 / 245
Operating weight	kg	30,400–37,750
Bucket capacity	m <sup>3</sup>	1.00–2.15

<b>R 934</b>		
Engine power	kW/HP	200 / 272
Operating weight	kg	34,800–38,400
Bucket capacity	m <sup>3</sup>	1.00–2.50

<b>R 938</b>		
Engine power	kW/HP	220 / 299
Operating weight	kg	37,300–41,400
Bucket capacity	m <sup>3</sup>	1.00–3.00

<b>R 945</b>		
Engine power	kW/HP	220 / 299
Operating weight	kg	41,400–48,250
Bucket capacity	m <sup>3</sup>	2.00–3.00



More information

# Information & Sales

---



## Downloads

All brochures for earthmoving and material handling at a glance.

Download now and find out more!



## Configurator

Configure the perfect machine for your application.

Start now and choose the ideal solution!



## Energy efficiency calculator

See how much fuel you can save with a Liebherr.

Calculate your consumption now and start saving!



## Sales partner

Your local contacts.

Find your sales partner and get advice specific to your needs!



## MyGuide app

Products, information and news – all in one app.

Download now and get started right away!



## Contact form

We will take care of your request.

Get in touch now and we will work on your enquiry together!

