
R 945 Litronic

LIEBHERR

Crawler excavator

Generation

8

Operating weight

46,900 kg / 103,400 lb

Engine

220 kW / 295 HP

Tier 4 Final

Bucket capacity

2.00–3.00 m³ /

2.62–3.92 yd³



Experience the progress

R 945

① Safety

- Panoramic visibility with no obstructions and camera on the rear and the right side
- Tilttable console for easy and safe access to cab
- Rollover-resistant ROPS-certified cab structure
- Emergency exit via the rear cab window whatever the configuration of the excavator
- Right window and windshield in laminated and tinted glass

② Equipment

- Choice of 3 types of booms and multiple lengths of equipment
- Safety check valves for hoist and stick cylinders
- Long component life and increased productivity thanks to the automatic centralized lubrication (option)

③ Maintenance

- Innovative servicing concept, with service points accessible from ground level
- Lateral access to uppercarriage and large maintenance platform
- Engine oil, hydraulic oil, fuel and urea levels visible on the display

④ Comfort

- Spacious, air-conditioned work space
- Pneumatic seat with vertical and horizontal suspension
- Easy-to-use high resolution 9" color touchscreen
- Seat belt 3", orange color
- LED lighting as standard



⑤ Engine

- Liebherr engine that conforms with the US EPA Tier 4 Final exhaust emissions standard
- Automatic engine idling and engine stop

⑥ Undercarriage

- Choice of a robust X-shaped undercarriage and a variable track undercarriage with integrated eyes for secure transport
- Easy maintenance
- Maintenance-free track chains and track rollers with lifetime lubrication



Technical data



Engine

Rating	
per SAE J1349	295 HP (220 kW) at 1,800 rpm
per ISO 9249	299 HP (220 kW) at 1,800 rpm
Torque	1,421 Nm at 1,350 rpm / 1,048 lbf ft at 1,350 rpm
Model	Liebherr D944 A7-24
Type	4 cylinder in-line
Bore	130 mm / 5.1 in
Stroke	150 mm / 5.9 in
Displacement	8.0 l / 488 in³
Engine operation	4-stroke diesel Common-Rail Turbo-charged and after-cooler
Exhaust gas treatment	Tier 4 Final SCR Filter Passive regeneration by thermo management
Cooling system	Water-cooled and oil cooler, after-cooled and fuel cooled
Air cleaner	Dry-type air cleaner with pre-cleaner
Fuel tank	729 l / 193 gal
Urea tank	90 l / 24 gal
Electrical system	
Voltage	24 V
Batteries	2 x 135 Ah / 12 V
Alternator	Three-phase current 28 V / 140 A
Engine idling	Sensor controlled



Hydraulic controls

Power distribution	Via control valves, simultaneous and independent actuation of undercarriage, swing drive and equipment
Electric servo circuit	Electro-hydraulic control
Equipment and swing	Proportional via joystick levers
Travel	– Proportional control via foot pedals or removable levers – Automatic or manual speed adjustment
Additional functions	Proportional regulation via foot pedals or mini-joystick



Hydraulic system

Hydraulic system	Positive Control hydraulic system. Demand-based, double independent pump flows Features high system dynamics and sensitivity provided by integrated system controlling Independent circuit for rotation
Hydraulic pumps	
For equipment and travel drive	Liebherr, variable displacement, swashplate double pump
Max. flow	2 x 315 l/min. / 2 x 83 gpm
Max. pressure	380 bar / 5,511 psi
For swing drive	Swashplate pump, closed-loop circuit
Max. flow	205 l/min. / 54 gpm
Max. pressure	400 bar / 5,802 psi
Pump management	Electronic management synchronous to the control block
Hydraulic tank	239 l / 63 gal
Hydraulic system	max. 475 l / max. 126 gal
Filtration	1 main return filter with integrated partial micro filtration (10 µm / 1,250 mesh)
Cooling system	Compact cooler, consisting of a water cooler, with hydraulic oil cooler, gearbox oil cooler, fuel cooler and after-cooler cores and hydrostatically driven fan
MODE selection	Adjustment of engine and hydraulic performance via a mode pre-selector to match application, e.g. for especially economical and environmentally friendly operation or for maximum digging performance and heavy-duty jobs
Engine speed and performance setting	Stepless adjustment of engine output and hydraulic power via engine speed



Swing drive

Drive	Liebherr swashplate motor with integrated brake valve and torque control
Transmission	Liebherr compact planetary reduction gears
Swing ring	Liebherr, sealed race ball bearing swing ring, internal teeth
Swing speed	0-8.6 rpm stepless
Swing torque	117 kNm / 86,295 lbf ft
Holding brake	Wet multi-disc (spring applied, pressure released)



Cab

Cab	ROPS safety cab structure (roll-over protection system according to ISO 12117-2:2008) with windscreen, totally or partially retractable (only upper part), under cab roof, LED headlights integrated in the ceiling, a door with a sliding window (can be opened on both sides), large storing box and several stowing possibilities, shock-absorbing suspension, laminated right hand side and roof windows, all windows tinted, separate extensible window shades for the sunroof window and windscreen, cigarette lighter and 24 V plug, 12 V plug, cup holder, mobile phone storage net
Operator's seat	Liebherr-Comfort seat, airsprung with automatic weight adjustment, vertical and longitudinal seat damping including consoles and joysticks. Seat and armrests adjustable separately and in combination (adjustable in length, height and inclination), seat heating as standard
Arm consoles	Oscillating consoles with seat, tiltable console left
Operation and displays	Large high-resolution operating unit, intuitive, color display with touchscreen, video-compatible, numerous setting, control and monitoring options, e.g. air conditioning control, fuel consumption, machine and attachment parameters
Air-conditioning	Automatic air-conditioning, recirculated air function, fast de-icing and demisting at the press of a button, air vents can be operated via a menu. Recirculated air and fresh air filters can be easily replaced and are accessible from the outside. Heating-cooling unit, designed for extreme outside temperatures, sensors for solar radiation, inside and outside temperatures
Noise emission	
ISO 6396	72 dB(A) = L_{pA} (inside cab)
2000/14/EC	105 dB(A) = L_{WA} (surround noise)



Undercarriage

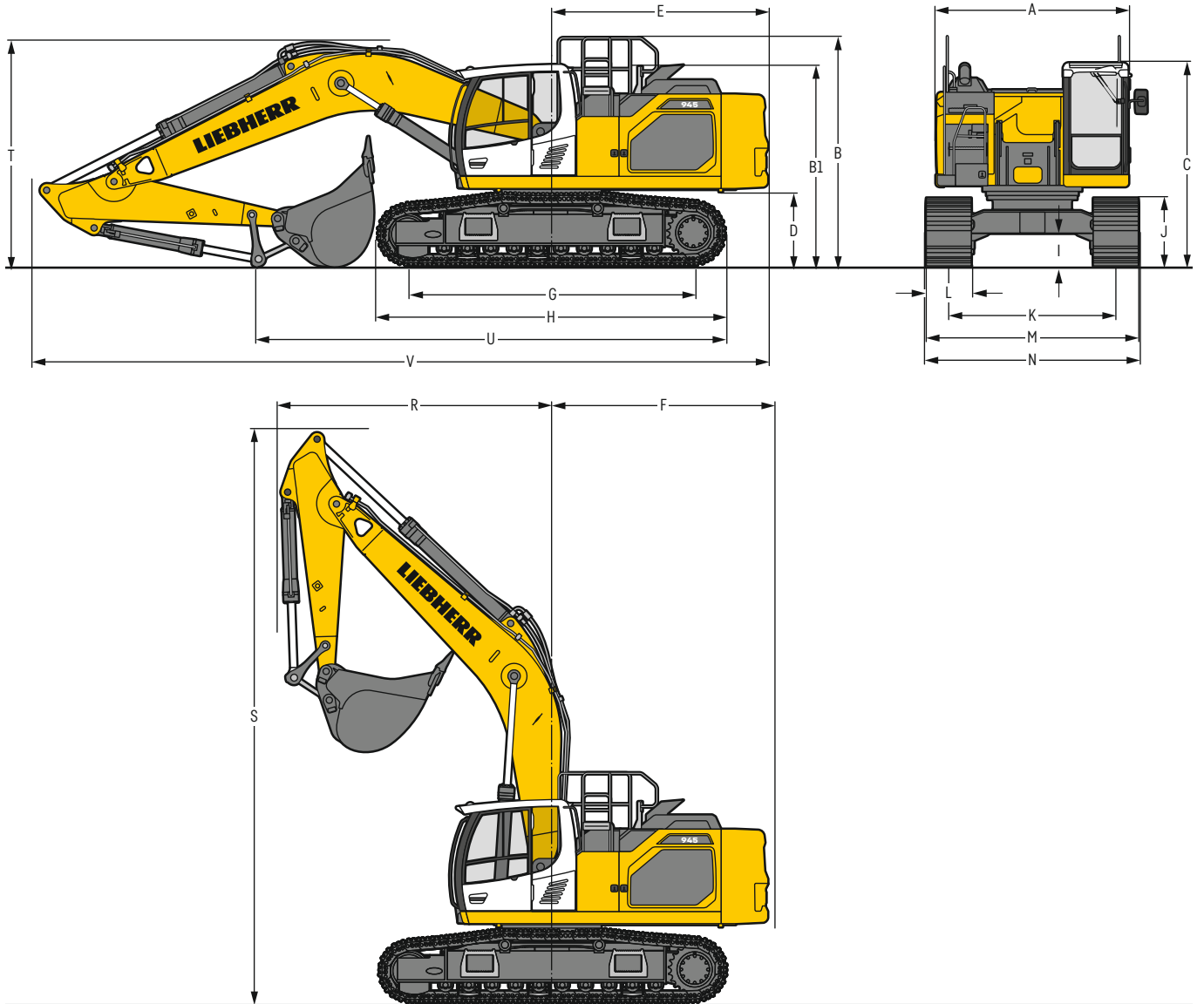
Versions	
S-HD	Gauge 2,890 mm / 9'6"
LC-V	Gauge 2,390 mm / 2,890 mm / 7'10" / 9'6"
Drive	Liebherr swashplate motor with brake valves on both sides
Transmission	Liebherr planetary reduction gear
Maximum travel speed	2.9 km/h / 1.8 mph low range 4.6 km/h / 2.9 mph high range
Drawbar pull on crawler	363 kN / 81,610 lbf
Track components	D7G, maintenance-free
Track rollers / Carrier rollers	10 / 2 (S-HD) 10 / 3 (LC-V)
Tracks	Sealed and greased
Track pads	Triple grouser
Holding brake	Wet multi-disc (spring applied, pressure released)
Brake valves	Integrated into travel motor
Lashing eyes	Integrated



Equipment

Type	Combination of resistant steel plates and cast steel components
Hydraulic cylinders	Liebherr cylinders with seal and guidance systems
Bearings	Sealed, low maintenance
Lubrication	Liebherr central lubrication system
Hydraulic connections	Pipes and hoses equipped with SAE split-flange connections
Buckets	Standard equipped with Liebherr tooth system

Dimensions



	S-HD			mm / ft in			LC-V			mm / ft in		
A	Uppercarriage width			2,990 ²⁾ / 9'10" ²⁾						2,990 ²⁾ / 9'10" ²⁾		
B	Uppercarriage height			3,635 / 11'11"						3,760 / 12' 4"		
B1	Uppercarriage height (handrails folded)			3,195 / 10' 6"						3,320 / 10'11"		
C	Cab height			3,215 / 10' 7"						3,340 / 10'11"		
D	Counterweight ground clearance			1,240 / 4' 1"						1,365 / 4' 6"		
E	Rear-end length			3,350 / 11'						3,350 / 11'		
F	Tail swing radius			3,450 / 11' 4"						3,450 / 11' 4"		
G	Wheelbase			4,400 / 14' 5"						4,400 / 14' 5"		
H	Undercarriage length			5,365 / 17' 7"						5,350 / 17' 7"		
I	Undercarriage ground clearance			550 / 1'10"						740 / 2' 5"		
J	Track height			1,145 / 3' 9"						1,185 / 3'11"		
K	Track gauge			2,890 / 9' 6"						2,390 / 2,890 ³⁾ / 7'10" / 9' 6" ³⁾		
L	Track pad width			600 / 24"	750 / 30"	900 / 35"	600 /	24"	750 /	30"	900 /	35"
M	Width over tracks			3,490 / 11' 5"			3,640 / 11'11"			3,790 / 12' 5"		
N	Width over steps			3,695 ³⁾ / 12' 1" ³⁾			3,695 ³⁾ / 12' 1" ³⁾			3,845 ³⁾ / 12' 7" ³⁾		
							2,990 / 3,490 ³⁾ / 9'10" / 11' 5" ³⁾			3,140 / 3,640 ³⁾ / 10'4" / 11'11" ³⁾		
							3,200 / 3,700 ³⁾ / 10' 6" / 12' 2" ³⁾			3,200 / 3,700 ³⁾ / 10' 6" / 12' 2" ³⁾		

¹⁾ width with removable steps

²⁾ without door stop device and spacer

³⁾ work position

	Stick length m / ft in	Mono boom 6.45 m / 21'2"		Mono boom SME 6.15 m / 20'2"		Mono boom SME 6.45 m / 21'2"	
		direct mounting		direct mounting		direct mounting	
		mm / ft in		mm / ft in		mm / ft in	
		S-HD	LC-V	S-HD	LC-V	S-HD	LC-V
R	Front swing radius	4,250 / 13'11"		4,050 / 13'3"		4,250	
S	Height with boom up	8,950 / 29'4"	9,050 / 29' 8"	8,750 / 28'8"	8,850 / 29'	8,950 / 29'4"	9,050 / 29'8"
T	Boom height	2.60 / 8'6"	3,350 / 11'	3,650 / 12'	-	-	-
		2.90 / 9'6"	3,750 / 12'4"	3,850 / 12' 8"	-	-	-
		3.25 / 10'8"	3,800 / 12'6"	3,900 / 12'10"	-	-	-
		3.95 / 13'	3,400 ¹⁾ / 11'2" ¹⁾	3,450 ¹⁾ / 11' 4" ¹⁾	-	-	-
		2.15 / 7'1" SME	-	-	3,550 / 11' 8"	3,600 / 11'10"	3,500 / 11' 6"
					3,350 ¹⁾ / 11' ¹⁾	3,400 ¹⁾ / 11' 2" ¹⁾	3,300 ¹⁾ / 10'10" ¹⁾
		2.60 / 8'6" SME	-	-	3,900 / 12'10"	3,950 / 13'	3,700 / 12' 2"
					3,350 ¹⁾ / 11' ¹⁾	3,450 ¹⁾ / 11' 4" ¹⁾	3,350 ¹⁾ / 11' ¹⁾
U	Length on ground	2.60 / 8'6"	7,000 / 23'	7,000 / 23'	-	-	-
		2.90 / 9'6"	6,700 / 22'	7,000 / 23'	-	-	-
		3.25 / 10'8"	6,250 / 20'6"	7,000 / 23'	-	-	-
		3.95 / 13'	8,050 ¹⁾ / 26'5" ¹⁾	8,000 ¹⁾ / 26' 3" ¹⁾	-	-	-
		2.15 / 7'1" SME	-	-	7,050 / 23' 2"	6,850 / 22' 6"	7,400 / 24'3"
					9,550 ¹⁾ / 31' 4" ¹⁾	9,500 ¹⁾ / 31' 2" ¹⁾	7,800 ¹⁾ / 25'7" ¹⁾
		2.60 / 8'6" SME	-	-	6,850 / 22' 6"	6,850 / 22' 6"	7,050 / 23'2"
					9,100 ¹⁾ / 29'10" ¹⁾	9,100 ¹⁾ / 29'10" ¹⁾	7,550 ¹⁾ / 24'9" ¹⁾
V	Overall length	2.60 / 8'6"	11,200 / 36'9"	-	-	-	-
		2.90 / 9'6"	11,200 / 36'9"	-	-	-	-
		3.25 / 10'8"	11,200 / 36'9"	-	-	-	-
		3.95 / 13'	11,000 ¹⁾ / 36'1" ¹⁾	-	-	-	-
		2.15 / 7'1" SME	-	-	10,900 / 35'9"	-	11,200 / 36'9"
					10,800 ¹⁾ / 35'5" ¹⁾	-	11,100 ¹⁾ / 36'5" ¹⁾
		2.60 / 8'6" SME	-	-	10,900 / 35'9"	-	11,200 / 36'9"
					10,800 ¹⁾ / 35'5" ¹⁾	-	11,100 ¹⁾ / 36'5" ¹⁾
	Bucket		2.15 m ³ / 2.81 yd ³		2.50 m ³ / 3.27 yd ³		2.25 m ³ / 2.94 yd ³

¹⁾ without bucket

Transport dimensions

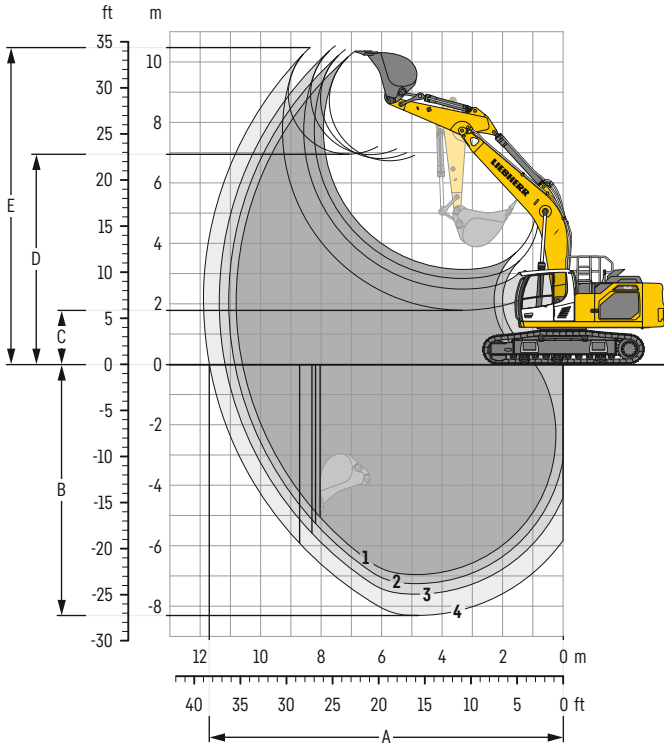
removable elements disassembled

	Undercarriage	Mono boom 6.45 m / 21'2"			Mono boom SME 6.15 m / 20'2"			Mono boom SME 6.45 m / 20'2"		
		mm / ft in			mm / ft in			mm / ft in		
Pad width		600 / 24"	750 / 30"	900 / 35"	600 / 24"	750 / 30"	900 / 35"	600 / 24"	750 / 30"	900 / 35"
Transport width	S-HD	3,490 / 11' 5"	3,640 / 11'11"	3,790 / 12' 5"	3,490 / 11' 5"	3,640 / 11'11"	3,790 / 12' 5"	3,490 / 11' 5"	3,640 / 11'11"	3,790 / 12' 5"
	LC-V	2,990 / 9'10"	3,140 / 10' 4"	3,290 / 10'10"	2,990 / 9'10"	3,140 / 10' 4"	3,290 / 10'10"	2,990 / 9'10"	3,140 / 10' 4"	3,290 / 10'10"
	Undercarriage / Stick m / ft in	S-HD	LC-V	S-HD	LC-V	S-HD	LC-V	S-HD	LC-V	
		mm / ft in		mm / ft in		mm / ft in		mm / ft in		
Transport length		11,200 / 36'9" / 11,000 ¹⁾ / 36'1" ¹⁾		10,900 / 35'9" / 10,800 ¹⁾ / 35'5" ¹⁾		11,200 / 36'9" / 11,100 ¹⁾ / 36'5" ¹⁾				
Transport height	2.60 / 8'6"	3,350 / 11'	3,650 / 12'	-	-	-	-	-	-	
	2.90 / 9'6"	3,750 / 12'4"	3,850 / 12' 8"	-	-	-	-	-	-	
	3.25 / 10'8"	3,800 / 12'6"	3,900 / 12'10"	-	-	-	-	-	-	
	3.95 / 13'	3,400 ¹⁾ / 11'2" ¹⁾	3,450 ¹⁾ / 11' 4" ¹⁾	-	-	-	-	-	-	
	2.15 / 7'1" SME	-	-	3,550 / 11' 8"	3,600 / 11'10"	3,500 / 11' 6"	3,550 / 11'8"	3,300 ¹⁾ / 10'10" ¹⁾	3,350 ¹⁾ / 11' ¹⁾	
	2.60 / 8'6" SME	-	-	3,900 / 12'10"	3,950 / 13'	3,700 / 12' 2"	3,750 / 12'4"	3,350 ¹⁾ / 11' ¹⁾	3,400 ¹⁾ / 11'2" ¹⁾	
				3,350 ¹⁾ / 11' ¹⁾	3,450 ¹⁾ / 11' 4" ¹⁾	3,350 ¹⁾ / 11' ¹⁾	3,400 ¹⁾ / 11'2" ¹⁾			
	Bucket		2.15 m ³ / 2.81 yd ³		2.50 m ³ / 3.27 yd ³		2.25 m ³ / 2.94 yd ³			

¹⁾ without bucket

Backhoe bucket

with mono boom 6.45 m / 21'2"



Digging envelope

without quick coupler		1	2	3	4
Stick length	m / ft in	2.60 / 8' 6"	2.90 / 9' 6"	3.25 / 10' 8"	3.95 / 13'
A Max. reach at ground level	m / ft in	10.60 / 34' 9"	10.85 / 35' 7"	11.17 / 36' 8"	11.70 / 38' 5"
B Max. digging depth	m / ft in	6.95 / 22' 10"	7.25 / 23' 9"	7.60 / 24' 11"	8.30 / 27' 3"
C Min. dumping height	m / ft in	3.14 / 10' 4"	2.84 / 9' 4"	2.49 / 8' 2"	1.79 / 5' 10"
D Max. dumping height	m / ft in	6.73 / 22' 1"	6.80 / 22' 4"	6.93 / 22' 9"	6.95 / 22' 10"
E Max. cutting height	m / ft in	10.35 / 33' 11"	10.40 / 34' 1"	10.53 / 34' 7"	10.47 / 34' 4"

Forces

without quick coupler		1	2	3	4
Stick digging force (ISO 6015)	kN / lbf	212 / 47,660	198 / 44,510	183 / 41,140	159 / 35,750
Bucket digging force (ISO 6015)	kN / lbf	238 / 53,510	238 / 53,510	238 / 53,510	238 / 53,510
Stick digging force (SAE J1179)	kN / lbf	202 / 45,410	189 / 42,490	176 / 39,570	154 / 34,620
Bucket digging force (SAE J1179)	kN / lbf	210 / 47,210	210 / 47,210	210 / 47,210	210 / 47,210

Operating weight and ground pressure

The operating weight includes the basic machine with counterweight 8.4 t / 18,520 lb, mono boom 6.45 m / 21'2", stick 3.25 m / 10'8" and bucket 2.15 m³ / 2.81 yd³ (1,730 kg / 3,810 lb).

Undercarriage		S-HD		
Pad width	mm / in	600 / 24"	750 / 30"	900 / 35"
Weight	kg / lb	41,200 / 90,830	42,450 / 93,590	43,300 / 95,460
Ground pressure	kg/cm ² / psi	0.72 / 10.2	0.60 / 8.5	0.51 / 7.3

Undercarriage		LC-V		
Pad width	mm / in	600 / 24"	750 / 30"	900 / 35"
Weight	kg / lb	43,600 / 96,120	44,850 / 98,880	45,700 / 100,750
Ground pressure	kg/cm ² / psi	0.77 / 11.0	0.63 / 9.0	0.54 / 7.7

The operating weight includes the basic machine with counterweight 9.4 t / 20,720 lb, mono boom 6.45 m / 21'2", stick 3.25 m / 10'8" and bucket 2.15 m³ / 2.81 yd³ (1,730 kg / 3,810 lb).

Undercarriage		S-HD		
Pad width	mm / in	600 / 24"	750 / 30"	900 / 35"
Weight	kg / lb	42,200 / 93,040	43,450 / 95,790	44,300 / 97,670
Ground pressure	kg/cm ² / psi	0.74 / 10.5	0.61 / 8.7	0.52 / 7.4

Undercarriage		LC-V		
Pad width	mm / in	600 / 24"	750 / 30"	900 / 35"
Weight	kg / lb	44,600 / 98,330	45,850 / 101,080	46,700 / 102,960
Ground pressure	kg/cm ² / psi	0.79 / 11.2	0.65 / 9.2	0.55 / 7.8

Buckets Machine stability per ISO 10567* (75% of tipping capacity)

Cutting width	Capacity ISO 7461	Weight ³⁾	Weight ⁴⁾	S-HD undercarriage (with track pads 750 mm / 30")								LC-V undercarriage (with track pads 750 mm / 30")							
				Stick length (m / ft in)				Stick length (m / ft in)				Stick length (m / ft in)				Stick length (m / ft in)			
				without quick coupler				with quick coupler				without quick coupler				with quick coupler			
				2.60	2.90	3.25	3.95	2.60	2.90	3.25	3.95	2.60	2.90	3.25	3.95	2.60	2.90	3.25	3.95
8'6"	9'6"	10'8"	13'	8'6"	9'6"	10'8"	13'	8'6"	9'6"	10'8"	13'	8'6"	9'6"	10'8"	13'				
with counterweight 8.4t / 18,520 lb																			
STD ¹⁾	1,650	2.00	1,730	1,690	▲	▲	▲	▲	▲	▲	▲	▲	▲	▲	▲	▲	▲	▲	▲
	5'5"	2.62	3,810	3,730	▲	▲	▲	▲	▲	▲	▲	▲	▲	▲	▲	▲	▲	▲	▲
	1,600	2.15	1,770	1,730	▲	▲	▲	▲	▲	▲	▲	▲	▲	▲	▲	▲	▲	▲	▲
	5'3"	2.81	3,900	3,810	▲	▲	▲	▲	▲	▲	▲	▲	▲	▲	▲	▲	▲	▲	▲
	1,650	2.25	1,810	1,770	▲	▲	▲	■	▲	▲	▲	▲	▲	▲	▲	▲	▲	▲	▲
	5'5"	2.94	3,990	3,900	▲	▲	▲	■	▲	▲	▲	▲	▲	▲	▲	▲	▲	▲	▲
	1,800	2.50	1,900	1,860	▲	▲	■	▲	▲	▲	■	▲	▲	▲	▲	▲	▲	▲	■
	5'11"	3.27	4,190	4,100	▲	▲	■	▲	▲	▲	■	▲	▲	▲	▲	▲	▲	▲	■
	1,800	2.75	1,970	1,930	▲	■	▲	■	▲	▲	■	▲	▲	▲	■	▲	▲	▲	■
	5'11"	3.60	4,340	4,260	▲	■	▲	■	▲	▲	■	▲	▲	▲	■	▲	▲	▲	■
1,850	3.00	2,020	1,980	■	▲	■	▲	▲	■	▲	▲	▲	■	▲	▲	■	▲	■	
6'1"	3.92	4,450	4,370	■	▲	■	▲	▲	■	▲	▲	▲	■	▲	▲	■	▲	■	
HD ²⁾	1,650	2.00	1,830	1,790	▲	▲	▲	▲	▲	▲	▲	▲	▲	▲	▲	▲	▲	▲	▲
	5'5"	2.62	4,030	3,950	▲	▲	▲	▲	▲	▲	▲	▲	▲	▲	▲	▲	▲	▲	▲
	1,600	2.15	1,870	1,830	▲	▲	▲	▲	▲	▲	▲	▲	▲	▲	▲	▲	▲	▲	▲
	5'3"	2.81	4,120	4,030	▲	▲	▲	▲	▲	▲	▲	▲	▲	▲	▲	▲	▲	▲	▲
	1,650	2.25	1,910	1,870	▲	▲	▲	■	▲	▲	▲	▲	▲	▲	▲	▲	▲	▲	▲
	5'5"	2.94	4,210	4,120	▲	▲	▲	■	▲	▲	▲	▲	▲	▲	▲	▲	▲	▲	▲
	1,800	2.50	2,000	1,960	▲	▲	■	▲	▲	▲	■	▲	▲	▲	▲	▲	▲	▲	■
	5'11"	3.27	4,410	4,320	▲	▲	■	▲	▲	▲	■	▲	▲	▲	▲	▲	▲	▲	■
	1,800	2.75	2,080	2,040	▲	■	▲	■	▲	▲	■	▲	▲	▲	■	▲	▲	▲	■
	5'11"	3.60	4,590	4,500	▲	■	▲	■	▲	▲	■	▲	▲	▲	■	▲	▲	▲	■
1,850	3.00	2,130	2,090	■	▲	■	▲	▲	■	▲	▲	▲	■	▲	▲	■	▲	■	
6'1"	3.92	4,700	4,610	■	▲	■	▲	▲	■	▲	▲	▲	■	▲	▲	■	▲	■	
with counterweight 9.4t / 20,720 lb																			
STD ¹⁾	1,650	2.00	1,730	1,690	▲	▲	▲	▲	▲	▲	▲	▲	▲	▲	▲	▲	▲	▲	▲
	5'5"	2.62	3,810	3,730	▲	▲	▲	▲	▲	▲	▲	▲	▲	▲	▲	▲	▲	▲	▲
	1,600	2.15	1,770	1,730	▲	▲	▲	▲	▲	▲	▲	▲	▲	▲	▲	▲	▲	▲	▲
	5'3"	2.81	3,900	3,810	▲	▲	▲	▲	▲	▲	▲	▲	▲	▲	▲	▲	▲	▲	▲
	1,650	2.25	1,810	1,770	▲	▲	▲	▲	▲	▲	▲	▲	▲	▲	▲	▲	▲	▲	▲
	5'5"	2.94	3,990	3,900	▲	▲	▲	▲	▲	▲	▲	▲	▲	▲	▲	▲	▲	▲	▲
	1,800	2.50	1,900	1,860	▲	▲	▲	■	▲	▲	▲	■	▲	▲	▲	▲	▲	▲	▲
	5'11"	3.27	4,190	4,100	▲	▲	▲	■	▲	▲	▲	■	▲	▲	▲	▲	▲	▲	▲
	1,800	2.75	1,970	1,930	▲	▲	▲	■	▲	▲	▲	■	▲	▲	▲	▲	▲	▲	■
	5'11"	3.60	4,340	4,260	▲	▲	▲	■	▲	▲	▲	■	▲	▲	▲	▲	▲	▲	■
1,850	3.00	2,020	1,980	▲	■	▲	■	▲	▲	■	▲	▲	▲	■	▲	▲	■	▲	
6'1"	3.92	4,450	4,370	▲	■	▲	■	▲	▲	■	▲	▲	▲	■	▲	▲	■	▲	
HD ²⁾	1,650	2.00	1,830	1,790	▲	▲	▲	▲	▲	▲	▲	▲	▲	▲	▲	▲	▲	▲	▲
	5'5"	2.62	4,030	3,950	▲	▲	▲	▲	▲	▲	▲	▲	▲	▲	▲	▲	▲	▲	▲
	1,600	2.15	1,870	1,830	▲	▲	▲	▲	▲	▲	▲	▲	▲	▲	▲	▲	▲	▲	▲
	5'3"	2.81	4,120	4,030	▲	▲	▲	▲	▲	▲	▲	▲	▲	▲	▲	▲	▲	▲	▲
	1,650	2.25	1,910	1,870	▲	▲	▲	▲	▲	▲	▲	▲	▲	▲	▲	▲	▲	▲	▲
	5'5"	2.94	4,210	4,120	▲	▲	▲	▲	▲	▲	▲	▲	▲	▲	▲	▲	▲	▲	▲
	1,800	2.50	2,000	1,960	▲	▲	▲	■	▲	▲	▲	■	▲	▲	▲	▲	▲	▲	■
	5'11"	3.27	4,410	4,320	▲	▲	▲	■	▲	▲	▲	■	▲	▲	▲	▲	▲	▲	■
	1,800	2.75	2,080	2,040	▲	▲	▲	■	▲	▲	▲	■	▲	▲	▲	▲	▲	▲	■
	5'11"	3.60	4,590	4,500	▲	▲	▲	■	▲	▲	▲	■	▲	▲	▲	▲	▲	▲	■
1,850	3.00	2,130	2,090	▲	■	▲	■	▲	▲	■	▲	▲	▲	■	▲	▲	■	▲	
6'1"	3.92	4,700	4,610	▲	■	▲	■	▲	▲	■	▲	▲	▲	■	▲	▲	■	▲	

* Indicated loads are based on ISO 10567, at maximum reach, and may be swung 360° on firm and even ground

¹⁾ Standard bucket with Liebherr teeth Z 50

²⁾ HD bucket with Liebherr teeth Z 50

³⁾ Bucket for direct mounting

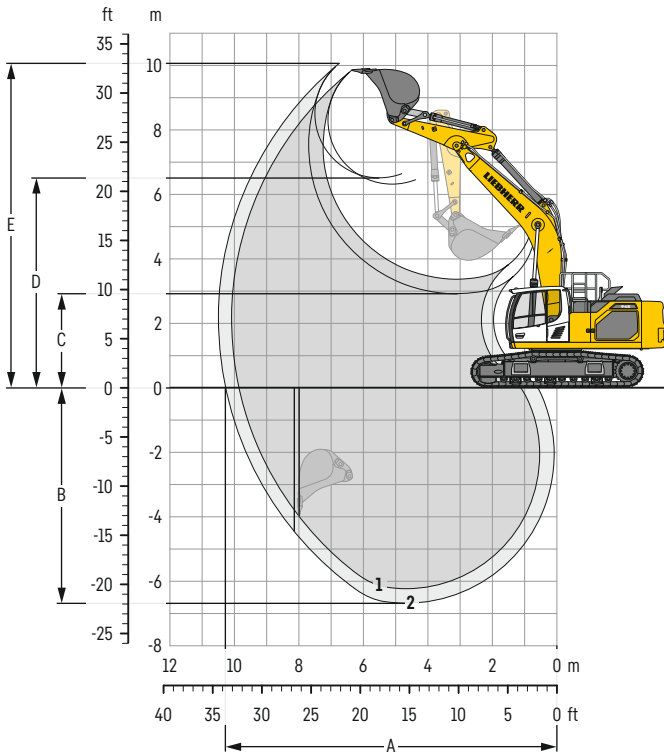
⁴⁾ Bucket for mounting to quick coupler SWA 66 (430 kg / 950 lb)

Other buckets available upon request

Max. material weight ▲ = ≤ 2.0t/m³ / 3,400 lb/yd³, ■ = ≤ 1.8t/m³ / 3,000 lb/yd³, ▲ = ≤ 1.65t/m³ / 2,800 lb/yd³, ■ = ≤ 1.5t/m³ / 2,500 lb/yd³, △ = ≤ 1.2t/m³ / 2,000 lb/yd³

Backhoe bucket

with mono boom SME 6.15 m / 20'2"



Digging envelope

without quick coupler		1	2
Stick length	m / ft in	2.15 / 7'1"	2.60 / 8' 6"
		SME	SME
A Max. reach at ground level	m / ft in	9.86 / 32'4"	10.28 / 33' 9"
B Max. digging depth	m / ft in	6.23 / 20'5"	6.68 / 21'11"
C Min. dumping height	m / ft in	3.37 / 11'1"	2.92 / 9' 7"
D Max. dumping height	m / ft in	6.32 / 20'9"	6.61 / 21' 8"
E Max. cutting height	m / ft in	9.86 / 32'4"	10.06 / 33'

Forces

without quick coupler		1	2
Stick digging force (ISO 6015)	kN / lbf	238 / 53,510	212 / 47,660
Bucket digging force (ISO 6015)	kN / lbf	264 / 59,350	264 / 59,350
Stick digging force (SAE J1179)	kN / lbf	226 / 50,810	202 / 45,410
Bucket digging force (SAE J1179)	kN / lbf	233 / 52,380	233 / 52,380

Operating weight and ground pressure

The operating weight includes the basic machine with counterweight 8.4 t / 18,520 lb, mono boom SME 6.15 m / 20'2", stick SME 2.15 m / 7'1" and HD bucket 2.50 m³ / 3.27 yd³ (2,000 kg / 4,410 lb).

Undercarriage		S-HD	
Pad width	mm / in	600 / 24"	900 / 35"
Weight	kg / lb	41,400 / 91,270	43,500 / 95,900
Ground pressure	kg/cm ² / psi	0.73 / 10.4	0.51 / 7.3

Undercarriage		LC-V	
Pad width	mm / in	600 / 24"	900 / 35"
Weight	kg / lb	43,800 / 96,560	45,900 / 101,190
Ground pressure	kg/cm ² / psi	0.77 / 11.0	0.54 / 7.7

The operating weight includes the basic machine with counterweight 9.4 t / 20,720 lb, mono boom SME 6.15 m / 20'2", stick SME 2.15 m / 7'1" and HD bucket 2.50 m³ / 3.27 yd³ (2,000 kg / 4,410 lb).

Undercarriage		S-HD	
Pad width	mm / in	600 / 24"	900 / 35"
Weight	kg / lb	42,400 / 93,480	44,500 / 98,110
Ground pressure	kg/cm ² / psi	0.75 / 10.7	0.52 / 7.4

Undercarriage		LC-V	
Pad width	mm / in	600 / 24"	900 / 35"
Weight	kg / lb	44,800 / 98,770	46,900 / 103,400
Ground pressure	kg/cm ² / psi	0.79 / 11.2	0.55 / 7.8

Buckets Machine stability per ISO 10567* (75% of tipping capacity)

Cutting width	Capacity ISO 7451	Weight ³⁾	Weight ⁴⁾	S-HD undercarriage (with track pads 750 mm / 30")				LC-V undercarriage (with track pads 750 mm / 30")				
				Stick length (m / ft in)				Stick length (m / ft in)				
				without quick coupler		with quick coupler		without quick coupler		with quick coupler		
				m	ft	kg	lb	m	ft	kg	lb	m
with counterweight 8.4t / 18,520 lb												
HD ¹⁾	1,600	2.15	1,870	1,830	▲	▲	▲	▲	▲	▲	▲	▲
	5'3"	2.81	4,120	4,030	▲	▲	▲	▲	▲	▲	▲	▲
	1,650	2.25	1,910	1,870	▲	▲	▲	▲	▲	▲	▲	▲
	5'5"	2.94	4,210	4,120	▲	▲	▲	▲	▲	▲	▲	▲
	1,800	2.50	2,000	1,960	▲	▲	▲	▲	▲	▲	▲	▲
	5'11"	3.27	4,410	4,320	▲	▲	▲	▲	▲	▲	▲	▲
HDR ²⁾	1,800	2.75	2,080	2,040	▲	▲	▲	▲	▲	▲	▲	▲
	5'11"	3.60	4,590	4,500	▲	▲	▲	▲	▲	▲	▲	▲
	1,850	3.00	2,130	2,090	▲	■	▲	■	▲	▲	▲	▲
	6'1"	3.92	4,700	4,610	▲	■	▲	■	▲	▲	▲	▲
	1,650	2.00	2,490	2,530	▲	▲	▲	▲	▲	▲	▲	▲
	5'5"	2.62	5,490	5,580	▲	▲	▲	▲	▲	▲	▲	▲
with counterweight 9.4t / 20,720 lb												
HD ¹⁾	1,600	2.15	1,870	1,830	▲	▲	▲	▲	▲	▲	▲	▲
	5'3"	2.81	4,120	4,030	▲	▲	▲	▲	▲	▲	▲	▲
	1,650	2.25	1,910	1,870	▲	▲	▲	▲	▲	▲	▲	▲
	5'5"	2.94	4,210	4,120	▲	▲	▲	▲	▲	▲	▲	▲
	1,800	2.50	2,000	1,960	▲	▲	▲	▲	▲	▲	▲	▲
	5'11"	3.27	4,410	4,320	▲	▲	▲	▲	▲	▲	▲	▲
HDR ²⁾	1,800	2.75	2,080	2,040	▲	▲	▲	▲	▲	▲	▲	▲
	5'11"	3.60	4,590	4,500	▲	▲	▲	▲	▲	▲	▲	▲
	1,850	3.00	2,130	2,090	▲	▲	▲	▲	▲	▲	▲	▲
	6'1"	3.92	4,700	4,610	▲	▲	▲	▲	▲	▲	▲	▲
	1,650	2.00	2,490	2,530	▲	▲	▲	▲	▲	▲	▲	▲
	5'5"	2.62	5,490	5,580	▲	▲	▲	▲	▲	▲	▲	▲

* Indicated loads are based on ISO 10567, at maximum reach, and may be swung 360° on firm and even ground

¹⁾ HD bucket with Liebherr teeth Z 50

²⁾ HDR bucket with teeth Z 70

³⁾ Bucket for direct mounting

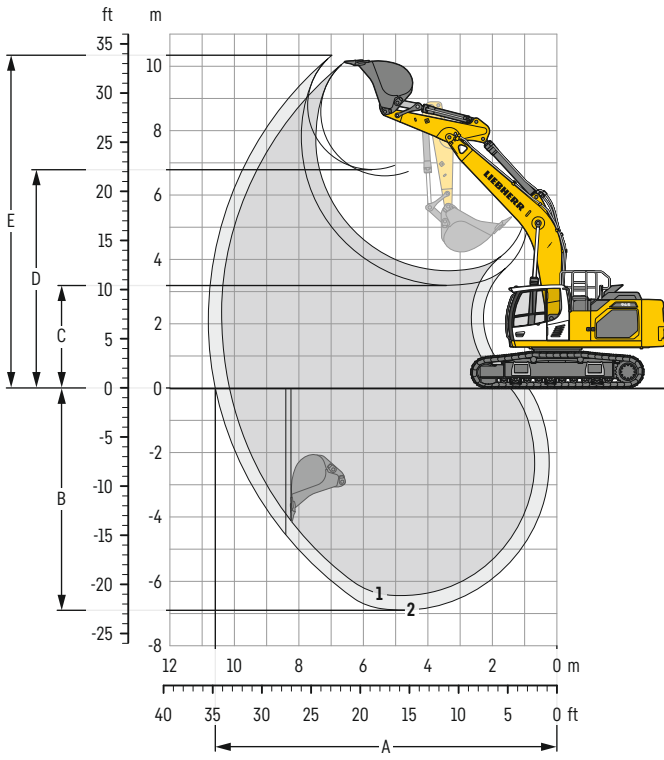
⁴⁾ Bucket for mounting to quick coupler SWA 66 (430 kg / 950 lb)

Other buckets available upon request

Max. material weight ▲ = ≤ 2.0 t/m³ / 3,400 lb/yd³, ■ = ≤ 1.8 t/m³ / 3,000 lb/yd³

Backhoe bucket

with mono boom SME 6.45 m / 21'2"



Digging envelope

without quick coupler		1	2
Stick length	m / ft in	2.15 / 7'1"	2.60 / 8' 6"
		SME	SME
A Max. reach at ground level	m / ft in	10.17 / 33'4"	10.58 / 34' 9"
B Max. digging depth	m / ft in	6.44 / 21'2"	6.89 / 22' 7"
C Min. dumping height	m / ft in	3.65 / 12'	3.20 / 10' 6"
D Max. dumping height	m / ft in	6.60 / 21'8"	6.79 / 22' 3"
E Max. cutting height	m / ft in	10.13 / 33'3"	10.34 / 33'11"

Forces

without quick coupler		1	2
Stick digging force (ISO 6015)	kN / lbf	238 / 53,510	212 / 47,660
Bucket digging force (ISO 6015)	kN / lbf	264 / 59,350	264 / 59,350
Stick digging force (SAE J1179)	kN / lbf	226 / 50,810	202 / 45,410
Bucket digging force (SAE J1179)	kN / lbf	233 / 52,380	233 / 52,380

Operating weight and ground pressure

The operating weight includes the basic machine with counterweight 8.4 t / 18,520 lb, mono boom SME 6.45 m / 21'2", stick SME 2.60 m / 8'6" and HD bucket 2.25 m³ / 2.94 yd³ (1,910 kg / 4,210 lb).

Undercarriage		S-HD	
Pad width	mm / in	600 / 24"	900 / 35"
Weight	kg / lb	41,550 / 91,600	43,650 / 96,230
Ground pressure	kg/cm ² / psi	0.73 / 10.4	0.51 / 7.3

Undercarriage		LC-V	
Pad width	mm / in	600 / 24"	900 / 35"
Weight	kg / lb	43,950 / 96,890	46,050 / 101,520
Ground pressure	kg/cm ² / psi	0.77 / 11.0	0.54 / 7.7

The operating weight includes the basic machine with counterweight 9.4 t / 20,720 lb, mono boom SME 6.45 m / 21'2", stick SME 2.60 m / 8'6" and HD bucket 2.25 m³ / 2.94 yd³ (1,910 kg / 4,210 lb).

Undercarriage		S-HD	
Pad width	mm / in	600 / 24"	900 / 35"
Weight	kg / lb	42,550 / 93,810	44,650 / 98,440
Ground pressure	kg/cm ² / psi	0.75 / 10.7	0.52 / 7.4

Undercarriage		LC-V	
Pad width	mm / in	600 / 24"	900 / 35"
Weight	kg / lb	44,950 / 99,100	47,050 / 103,730
Ground pressure	kg/cm ² / psi	0.79 / 11.3	0.55 / 7.8

Buckets Machine stability per ISO 10567* (75% of tipping capacity)

Cutting width mm ft in	Capacity ISO 7451 m ³ yd ³	Weight ³⁾ kg lb	Weight ⁴⁾ kg lb	S-HD undercarriage (with track pads 750 mm / 30")				LC-V undercarriage (with track pads 750 mm / 30")			
				Stick length (m / ft in)				Stick length (m / ft in)			
				without quick coupler		with quick coupler		without quick coupler		with quick coupler	
				2.15 7'1"	2.60 8'6"	2.15 7'1"	2.60 8'6"	2.15 7'1"	2.60 8'6"	2.15 7'1"	2.60 8'6"
with counterweight 8.4t / 18,520 lb											
1,600 5'3"	2.15 2.81	1,870 4,120	1,830 4,030	▲	▲	▲	▲	▲	▲	▲	
1,650 5'5"	2.25 2.94	1,910 4,210	1,870 4,120	▲	▲	▲	▲	▲	▲	▲	
1,800 5'11"	2.50 3.27	2,000 4,410	1,960 4,320	▲	▲	▲	▲	▲	▲	▲	
1,800 5'11"	2.75 3.60	2,080 4,590	2,040 4,500	▲	■	▲	■	▲	▲	▲	
1,850 6'1"	3.00 3.92	2,130 4,700	2,090 4,610	■	▲	■	▲	▲	■	▲	
1,650 5'5"	2.00 2.62	2,490 5,490	2,530 5,580	▲	▲	▲	▲	▲	▲	▲	
1,650 5'5"	2.25 2.94	2,570 5,670	2,610 5,750	▲	▲	▲	▲	▲	▲	▲	
1,650 5'5"	2.50 3.27	2,660 5,860	2,700 5,950	▲	■	▲	■	▲	▲	▲	
with counterweight 9.4t / 20,720 lb											
1,600 5'3"	2.15 2.81	1,870 4,120	1,830 4,030	▲	▲	▲	▲	▲	▲	▲	
1,650 5'5"	2.25 2.94	1,910 4,210	1,870 4,120	▲	▲	▲	▲	▲	▲	▲	
1,800 5'11"	2.50 3.27	2,000 4,410	1,960 4,320	▲	▲	▲	▲	▲	▲	▲	
1,800 5'11"	2.75 3.60	2,080 4,590	2,040 4,500	▲	▲	▲	▲	▲	▲	▲	
1,850 6'1"	3.00 3.92	2,130 4,700	2,090 4,610	▲	■	▲	■	▲	▲	▲	
1,650 5'5"	2.00 2.62	2,490 5,490	2,530 5,580	▲	▲	▲	▲	▲	▲	▲	
1,650 5'5"	2.25 2.94	2,570 5,670	2,610 5,750	▲	▲	▲	▲	▲	▲	▲	
1,650 5'5"	2.50 3.27	2,660 5,860	2,700 5,950	▲	▲	▲	▲	▲	▲	▲	

* Indicated loads are based on ISO 10567, at maximum reach, and may be swung 360° on firm and even ground

¹⁾ HD bucket with Liebherr teeth Z 50

²⁾ HDR bucket with teeth Z 70

³⁾ Bucket for direct mounting

⁴⁾ Bucket for mounting to quick coupler SWA 66 (430 kg / 950 lb)

Other buckets available upon request

Max. material weight ▲ = ≤ 2.0 t/m³ / 3,400 lb/yd³, ■ = ≤ 1.8 t/m³ / 3,000 lb/yd³, ▲ = ≤ 1.65 t/m³ / 2,800 lb/yd³

Lift capacities

with mono boom 6.45 m / 21'2", counterweight 8.4 t / 18,520 lb and track pads 750 mm / 30"

Stick 2.60 m / 8'6"

Under-carriage	3.0m 10ft		4.5m 15ft		6.0m 20ft		7.5m 25ft		9.0m 30ft		m ft in
9.0m t											
30ft lb											
7.5m t					10.0*	10.0			9.8*	9.8*	7.1
25ft lb					22.0*	22.0*			21.8*	21.8*	22'11"
6.0m t					10.6*	10.6*	9.1	9.7*	8.3	9.6*	8.0
20ft lb					23.1*	23.1*	19.5	21.3*	18.5	21.2*	26'
4.5m t		15.4*	15.4*		11.9*	11.9*	8.8	10.2*	7.3	9.6*	8.5
15ft lb		33.0*	33.0*		25.7*	25.7*	19.1	22.2*	16.2	21.1*	27'11"
3.0m t		17.6	18.5*		11.7	13.3*	8.6	10.9*	6.8	9.7*	8.8
10ft lb		38.1	39.8*		25.3	28.8*	18.5	23.6*	15.1	21.3*	28'10"
1.5m t		16.6*	16.6*		11.2	14.3*	8.3	11.4*	6.7	9.8*	8.8
5ft lb		36.4	40.3*		24.2	31.1*	17.9	24.8*	14.7	21.6*	28'10"
0m t		16.7	19.6*		11.0	14.7*	8.1	11.6*	6.9	10.0*	8.5
0ft lb		35.9	42.6*		23.7	31.8*	17.5	25.1*	15.1	22.0*	27'11"
-1.5m t	15.4*	15.4*	16.8	18.3*	10.9	14.1*	8.1	11.1*	7.5	10.1*	7.9
-5ft lb	35.0*	35.0*	36.0	39.8*	23.6	30.6*	17.5	23.9*	16.5	22.3*	26'
-3.0m t	20.0*	20.0*	16.0*	16.0*	11.1	12.5*			8.9	10.1*	7.0
-10ft lb	43.5*	43.5*	34.7*	34.7*	23.9	27.0*			19.7	22.3*	22'11"
-4.5m t		11.9*	11.9*						9.4*	9.4*	5.5
-15ft lb		25.4*	25.4*						20.5*	20.5*	17'10"
-6.0m t											
-20ft lb											
9.0m t											
30ft lb											
7.5m t					10.0*	10.0*			9.8*	9.8*	7.1
25ft lb					22.0*	22.0*			21.7*	21.7*	22'11"
6.0m t					10.7*	10.7*	9.5	9.7*	8.6	9.6*	8.0
20ft lb					23.3*	23.3*	20.5	21.3*	19.2	21.2*	26'
4.5m t		15.7*	15.7*		12.0*	12.0*	9.3	10.2*	7.7	9.6*	8.5
15ft lb		33.6*	33.6*		26.0*	26.0*	20.0	22.3*	16.9	21.1*	27'11"
3.0m t		18.5	18.7*		12.3	13.4*	9.0	10.9*	7.2	9.7*	8.8
10ft lb		39.9	40.2*		26.5	29.0*	19.4	23.7*	15.8	21.3*	28'10"
1.5m t		16.7*	16.7*		11.8	14.4*	8.7	11.4*	7.1	9.8*	8.8
5ft lb		38.3	40.4*		25.5	31.2*	18.9	24.8*	15.6	21.7*	28'10"
0m t		17.6	19.5*		11.6	14.6*	8.6	11.6*	7.3	10.0*	8.5
0ft lb		37.9	42.4*		25.0	31.7*	18.5	25.1*	16.1	22.1*	27'11"
-1.5m t	16.4*	16.4*	17.7	18.2*	11.6	14.0*	8.6	11.0*	8.0	10.1*	7.9
-5ft lb	37.1*	37.1*	38.1	39.5*	24.9	30.4*	18.5	23.7*	17.6	22.4*	26'
-3.0m t	19.6*	19.6*	15.8*	15.8*	11.7	12.3*			9.5	10.1*	7.0
-10ft lb	42.7*	42.7*	34.2*	34.2*	25.3	26.5*			21.2	22.2*	22'11"
-4.5m t		11.4*	11.4*						9.2*	9.2*	5.5
-15ft lb		24.2*	24.2*						20.1*	20.1*	17'10"
-6.0m t											
-20ft lb											

Stick 2.90 m / 9'6"

Under-carriage	3.0m 10ft		4.5m 15ft		6.0m 20ft		7.5m 25ft		9.0m 30ft		m ft in
9.0m t											
30ft lb											
7.5m t										9.3*	9.3*
25ft lb										20.5*	20.5*
6.0m t					10.2*	10.2*	9.1	9.3*			
20ft lb					22.2*	22.2*	19.6	20.5*			
4.5m t			14.6*	14.6*	11.5*	11.5*	8.9	9.9*			
15ft lb			31.5*	31.5*	24.9*	24.9*	19.1	21.5*			
3.0m t			17.8	17.8*	11.8	13.0*	8.6	10.6*	6.6	9.3*	
10ft lb			38.4*	38.4*	25.4	28.0*	18.5	23.1*			
1.5m t			16.9	19.6*	11.2	14.1*	8.3	11.2*	6.4	9.5*	
5ft lb			36.5	42.4*	24.3	30.6*	17.9	24.4*			
0m t			16.6	19.7*	10.9	14.6*	8.1	11.5*			
0ft lb			35.8	42.8*	23.6	31.6*	17.4	24.9*			
-1.5m t	15.4*	15.4*	16.6	18.7*	10.9	14.2*	8.0	11.2*			
-5ft lb	34.8*	34.8*	35.8	40.6*	23.4	30.8*	17.3	24.2*			
-3.0m t	21.5*	21.5*	16.6*	16.6*	11.0	12.9*					
-10ft lb	46.7*	46.7*	36.0*	36.0*	23.6	27.8*					
-4.5m t	16.2*	16.2*	13.0*	13.0*	9.6*	9.6*					
-15ft lb	34.8*	34.8*	27.7*	27.7*							
-6.0m t											
-20ft lb											
9.0m t											
30ft lb											
7.5m t										9.2*	9.2*
25ft lb										20.4*	20.4*
6.0m t					10.3*	10.3*	9.4*	9.4*			
20ft lb					22.4*	22.4*	20.5*	20.5*			
4.5m t			14.9*	14.9*	11.6*	11.6*	9.3	9.9*			
15ft lb			32.0*	32.0*	25.1*	25.1*	20.1	21.7*			
3.0m t			18.1*	18.1*	12.3	13.1*	9.0	10.7*	6.9	9.3*	
10ft lb			38.9*	38.9*	26.6	28.3*	19.4	23.2*			
1.5m t			17.8	19.7*	11.8	14.2*	8.7	11.3*	6.8	9.5*	
5ft lb			38.4	42.6*	25.5	30.7*	18.8	24.5*			
0m t			17.6	19.7*	11.6	14.6*	8.5	11.5*			
0ft lb			37.8	42.7*	24.9	31.6*	18.4	24.9*			
-1.5m t	16.1*	16.1*	17.6	18.6*	11.5	14.2*	8.5	11.1*			
-5ft lb	36.5*	36.5*	37.8	40.3*	24.8	30.7*	18.4	24.0*			
-3.0m t	21.1*	21.1*	16.4*	16.4*	11.6	12.7*					
-10ft lb	45.9*	45.9*	35.5*	35.5*	25.0	27.4*					
-4.5m t			12.5*	12.5*							
-15ft lb			26.7*	26.7*							
-6.0m t											
-20ft lb											

Height Can be slewed through 360° In longitudinal position of undercarriage Max. reach * Limited by hydr. capacity

The load values are quoted in tons (t) / lb x 1,000 at stick end (without bucket), and may be swung 360° on firm and even ground. Adjacent values are valid for the undercarriage when in the longitudinal position. Capacities are valid for 750 mm / 30" wide track pads. Indicated loads are based on ISO 10567 standard and do not exceed 75% of tipping or 87% of hydraulic capacity (indicated via *). Without bucket cylinder, link and lever the lift capacities will increase by 495 kg / 1,090 lb. Lifting capacity of the excavator is limited by machine stability and hydraulic capacity.

Determine maximum load lift from load lift chart displayed in the operator's cab or from load lift chart detailed in the operator's manual supplied with the machine.

Stick 3.25 m / 10'8"

Under-carriage	3.0m 10ft		4.5m 15ft		6.0m 20ft		7.5m 25ft		9.0m 30ft		m ft in
9.0m t											6.5
30ft lb											
7.5m t							8.8* 8.8*		8.1* 8.1*		7.8
25ft lb									18.0* 18.0*		25'2"
6.0m t							8.9* 8.9*		7.4 8.0*		8.6
20ft lb							19.5* 19.5*		16.5 17.6*		28'1"
4.5m t	20.8* 20.8*						8.9 9.5*	6.7 8.7*	6.6 8.1*		9.1
15ft lb							29.5* 29.5*		14.6 17.9*		29'10"
3.0m t							8.5 10.3*	6.5 9.0*	6.2 8.5*		9.4
10ft lb							18.4 22.3*	14.1 19.7*	13.6 18.7*		30'8"
1.5m t							8.2 11.0*	6.4 9.3*	6.0 9.0*		9.3
5ft lb							36.6 42.6*	23.5 31.2*	17.3 24.6*		30'8"
0m t	7.5* 7.5*	16.5 19.7*	10.9 14.4*	8.0 11.4*	6.3 9.4*				6.2 9.2*		9.1
0ft lb	17.4* 17.4*	35.6 42.6*	23.5 31.2*	17.3 24.6*					13.6 20.3*		29'10"
-1.5m t	14.8* 14.8*	16.5 18.9*	10.7 14.3*	7.9 11.2*					6.6 9.4*		8.6
-5ft lb	33.5* 33.5*	35.4 41.1*	23.1 30.9*	17.1 24.2*					14.6 20.8*		28'
-3.0m t	22.9* 22.9*	16.6 17.2*	10.8 13.2*	8.0 10.1*					7.6 9.6*		7.7
-10ft lb	49.8* 49.8*	35.7 37.2*	23.3 28.5*	17.3 21.7*					16.9 21.1*		25'2"
-4.5m t	18.0* 18.0*	13.9* 13.9*	10.6* 10.6*						9.4* 9.4*		6.4
-15ft lb	38.7* 38.7*	29.9* 29.9*	22.4* 22.4*						20.6* 20.6*		20'8"
-6.0m t											
-20ft lb											
9.0m t									8.6* 8.6*		6.5
30ft lb											
7.5m t							8.7* 8.7*		8.1* 8.1*		7.8
25ft lb							18.6* 18.6*		17.9* 17.9*		25'2"
6.0m t							8.9* 8.9*		7.7 8.0*		8.6
20ft lb							19.5* 19.5*		17.1 17.6*		28'1"
4.5m t	21.7* 21.7*	14.0* 14.0*	11.1* 11.1*	9.3 9.6*	7.1 8.7*				6.9 8.1*		9.1
15ft lb	45.9* 45.9*	30.1* 30.1*	24.0* 24.0*	20.1 20.8*	15.3 17.9*				15.3 17.9*		29'10"
3.0m t							6.9 9.0*	6.5 8.6*	6.5 8.6*		9.4
10ft lb							17.2* 17.2*	12.4 12.6*	9.0 10.3*		9.4
1.5m t							8.7 11.0*	6.7 9.3*	6.4 9.0*		9.3
5ft lb							37.1* 37.1*	26.7 27.3*	19.4 22.5*		30'8"
0m t	8.2* 8.2*	17.5 19.6*	11.5 14.4*	8.5 11.4*	6.6 9.3*				6.6 9.2*		9.1
0ft lb	18.8* 18.8*	37.6 42.6*	24.8 31.3*	18.3 24.7*	14.5 20.3*				14.5 20.3*		29'10"
-1.5m t	15.5* 15.5*	17.4 18.8*	11.4 14.2*	8.4 11.2*					7.1 9.4*		8.6
-5ft lb	34.9* 34.9*	37.4 40.9*	24.5 30.8*	18.1 24.1*					15.6 20.8*		28'
-3.0m t	22.6* 22.6*	17.0* 17.0*	11.4 13.0*	8.5 10.0*					8.2 9.6*		7.7
-10ft lb	49.1* 49.1*	36.7* 36.7*	24.7 28.1*	18.3 21.3*					18.2 21.1*		25'2"
-4.5m t	17.5* 17.5*	13.6* 13.6*	10.2* 10.2*						9.3* 9.3*		6.4
-15ft lb	37.5* 37.5*	29.1* 29.1*	21.6* 21.6*						20.5* 20.5*		20'8"
-6.0m t											
-20ft lb											

Stick 3.95 m / 13'

Under-carriage	3.0m 10ft		4.5m 15ft		6.0m 20ft		7.5m 25ft		9.0m 30ft		m ft in
9.0m t											7.2
30ft lb											
7.5m t							7.7* 7.7*				8.4
25ft lb							17.0* 17.0*				27'4"
6.0m t							8.0* 8.0*	6.8* 6.8*			9.2
20ft lb							17.5* 17.5*				29'11"
4.5m t							9.8* 9.8*	8.7* 8.7*	6.7 8.0*	6.0 6.5*	9.6
15ft lb							21.3* 21.3*	18.9* 18.9*	14.4 17.5*	13.3 14.2*	31'7"
3.0m t	13.0* 13.0*	15.3* 15.3*	11.5* 11.5*	8.6 9.6*	6.5 8.5*				5.6 6.8*		9.9
10ft lb	33.1* 33.1*	32.9* 32.9*	24.9* 24.9*	18.5 20.8*	14.0 18.4*				12.4 14.9*		32'5"
1.5m t	7.1* 7.1*	17.2 18.0*	11.3 13.0*	8.2 10.4*	6.3 8.9*				5.5 7.3*		9.9
5ft lb	16.6* 16.6*	37.0 38.9*	24.3 28.2*	17.7 22.6*	13.6 19.3*				12.1 16.2*		32'5"
0m t	10.0* 10.0*	16.5 19.3*	10.8 14.0*	7.9 11.0*	6.1 9.1*				5.6 8.3*		9.6
0ft lb	22.8* 22.8*	35.4 41.8*	23.3 30.3*	17.1 23.9*	13.2 19.8*				12.3 18.2*		31'7"
-1.5m t	14.7* 14.7*	16.2 19.2*	10.6 14.2*	7.8 11.1*	6.1 9.0*				5.9 8.8*		9.1
-5ft lb	33.1* 33.1*	34.9 41.7*	22.8 30.8*	16.7 24.1*	13.1 19.5*				13.1 19.4*		29'11"
-3.0m t	20.6* 20.6*	16.3 18.0*	10.5 13.6*	7.7 10.6*					6.7 9.1*		8.3
-10ft lb	46.6* 46.6*	35.0 39.0*	22.7 29.4*	16.7 22.9*					14.8 20.0*		27'2"
-4.5m t	21.2* 21.2*	15.6* 15.6*	10.7 11.8*						8.3 9.3*		7.1
-15ft lb	45.7* 45.7*	33.5* 33.5*	23.1 25.4*						18.5 20.4*		23'2"
-6.0m t		11.0* 11.0*							8.9* 8.9*		5.2
-20ft lb		22.9* 22.9*							19.5* 19.5*		16'8"
9.0m t											7.2
30ft lb											
7.5m t							7.7* 7.7*				8.4
25ft lb							17.0* 17.0*				27'4"
6.0m t							8.1* 8.1*	7.0* 7.0*			9.2
20ft lb							17.6* 17.6*				29'11"
4.5m t							10.0* 10.0*	8.8* 8.8*	7.1 8.1*	6.3 6.5*	9.6
15ft lb							21.6* 21.6*	19.1* 19.1*	15.2 17.6*	14.0 14.2*	31'7"
3.0m t	11.4* 11.4*	15.6* 15.6*	11.6* 11.6*	9.0 9.7*	6.9 8.5*				5.9 6.8*		9.9
10ft lb	28.7* 28.7*	33.5* 33.5*	25.2* 25.2*	19.4 21.0*	14.8 18.5*				13.1 15.0*		32'5"
1.5m t	7.2* 7.2*	18.0 18.2*	11.9 13.1*	8.6 10.5*	6.7 8.9*				5.8 7.4*		9.9
5ft lb	16.8* 16.8*	38.9 39.3*	25.6 28.4*	18.6 22.8*	14.4 19.4*				12.8 16.3*		32'5"
0m t	10.4* 10.4*	17.4 19.3*	11.4 14.0*	8.4 11.0*	6.5 9.2*				5.9 8.4*		9.6
0ft lb	23.5* 23.5*	37.4 41.9*	24.6 30.4*	18.1 23.9*	14.0 19.9*				13.1 18.4*		31'7"
-1.5m t	15.1* 15.1*	17.2 19.2*	11.2 14.2*	8.2 11.1*	6.4 9.0*				6.3 8.8*		9.1
-5ft lb	34.1* 34.1*	36.9 41.5*	24.1 30.7*	17.7 24.1*					14.0 19.4*		29'11"
-3.0m t	21.2* 21.2*	17.2 17.9*	11.2 13.5*	8.2 10.5*					7.2 9.1*		8.3
-10ft lb	47.9* 47.9*	37.0 38.7*	24.1 29.2*	17.7 22.6*					15.9 20.1*		27'2"
-4.5m t	20.7* 20.7*	15.3* 15.3*	11.4 11.6*						9.0 9.3*		7.1
-15ft lb	44.7* 44.7*	32.9* 32.9*	24.5 24.8*						20.1 20.4*		23'2"
-6.0m t		10.4* 10.4*							8.8* 8.8*		5.2
-20ft lb		21.6* 21.6*							19.2* 19.2*		16'8"

Height Can be slewed through 360° In longitudinal position of undercarriage Max. reach * Limited by hydr. capacity

The load values are quoted in tons (t) / lb x 1,000 at stick end (without bucket), and may be swung 360° on firm and even ground. Adjacent values are valid for the undercarriage when in the longitudinal position. Capacities are valid for 750 mm / 30" wide track pads. Indicated loads are based on ISO 10567 standard and do not exceed 75% of tipping or 87% of hydraulic capacity (indicated via *). Without bucket cylinder, link and lever the lift capacities will increase by 495 kg / 1,090 lb. Lifting capacity of the excavator is limited by machine stability and hydraulic capacity.

Determine maximum load lift from load lift chart displayed in the operator's cab or from load lift chart detailed in the operator's manual supplied with the machine.

Lift capacities

with mono boom 6.45 m / 21'2", counterweight 9.4 t / 20,720 lb and track pads 750 mm / 30"

Stick 2.60 m / 8'6"

Under-carriage	3.0m 10ft		4.5m 15ft		6.0m 20ft		7.5m 25ft		9.0m 30ft		m ft in
9.0m t											
30ft lb											
7.5m t					10.0*	10.0*			9.8*	9.8*	7.1
25ft lb					22.0*	22.0*			21.8*	21.8*	22'11"
6.0m t					10.6*	10.6*	9.6	9.7*	8.8	9.6*	8.0
20ft lb					23.1*	23.1*	20.8	21.3*	19.7	21.2*	26'
4.5m t			15.4*	15.4*	11.9*	11.9*	9.4	10.2*	7.8	9.6*	8.5
15ft lb			33.0*	33.0*	25.7*	25.7*	20.3	22.2*	17.3	21.1*	27'11"
3.0m t			18.5*	18.5*	12.5	13.3*	9.1	10.9*	7.3	9.7*	8.8
10ft lb			39.8*	39.8*	26.9	28.8*	19.7	23.6*	16.1	21.3*	28'10"
1.5m t			16.6*	16.6*	12.0	14.3*	8.9	11.4*	7.1	9.8*	8.8
5ft lb			38.8	40.3*	25.9	31.1*	19.1	24.8*	15.7	21.6*	28'10"
0m t			17.8	19.6*	11.7	14.7*	8.7	11.6*	7.3	10.0*	8.5
0ft lb			38.4	42.6*	25.3	31.8*	18.8	25.1*	16.2	22.0*	27'11"
-1.5m t	15.4*	15.4*	17.9	18.3*	11.7	14.1*	8.7	11.1*	8.0	10.1*	7.9
-5ft lb	35.0*	35.0*	38.5	39.8*	25.2	30.6*	18.7	23.9*	17.7	22.3*	26'
-3.0m t	20.0*	20.0*	16.0*	16.0*	11.8	12.5*			9.5	10.1*	7.0
-10ft lb	43.5*	43.5*	34.7*	34.7*	25.5	27.0*			21.0	22.3*	22'11"
-4.5m t			11.9*	11.9*					9.4*	9.4*	5.5
-15ft lb			25.4*	25.4*					20.5*	20.5*	17'10"
-6.0m t											
-20ft lb											
9.0m t											
30ft lb											
7.5m t					10.0*	10.0*			9.8*	9.8*	7.1
25ft lb					22.0*	22.0*			21.7*	21.7*	22'11"
6.0m t					10.7*	10.7*	9.7*	9.7*	9.2	9.6*	8.0
20ft lb					23.3*	23.3*	21.3*	21.3*	20.4	21.2*	26'
4.5m t			15.7*	15.7*	12.0*	12.0*	9.9	10.2*	8.1	9.6*	8.5
15ft lb			33.6*	33.6*	26.0*	26.0*	21.3	22.3*	18.0	21.1*	27'11"
3.0m t			18.7*	18.7*	13.1	13.4*	9.6	10.9*	7.6	9.7*	8.8
10ft lb			40.2*	40.2*	28.2	29.0*	20.6	23.7*	16.9	21.3*	28'10"
1.5m t			16.7*	16.7*	12.6	14.4*	9.3	11.4*	7.5	9.8*	8.8
5ft lb			40.4*	40.4*	27.2	31.2*	20.1	24.8*	16.6	21.7*	28'10"
0m t			18.8	19.5*	12.4	14.6*	9.2	11.6*	7.8	10.0*	8.5
0ft lb			40.4	42.4*	26.6	31.7*	19.8	25.1*	17.2	22.1*	27'11"
-1.5m t	16.4*	16.4*	18.2*	18.2*	12.3	14.0*	9.1	11.0*	8.5	10.1*	7.9
-5ft lb	37.1*	37.1*	39.5*	39.5*	26.6	30.4*	19.8	23.7*	18.8	22.4*	26'
-3.0m t	19.6*	19.6*	15.8*	15.8*	12.3*	12.3*			10.1*	10.1*	7.0
-10ft lb	42.7*	42.7*	34.2*	34.2*	26.5*	26.5*			22.2*	22.2*	22'11"
-4.5m t			11.4*	11.4*					9.2*	9.2*	5.5
-15ft lb			24.2*	24.2*					20.1*	20.1*	17'10"
-6.0m t											
-20ft lb											

Stick 2.90 m / 9'6"

Under-carriage	3.0m 10ft		4.5m 15ft		6.0m 20ft		7.5m 25ft		9.0m 30ft		m ft in
9.0m t											
30ft lb											
7.5m t											9.3*
25ft lb											20.5*
6.0m t					10.2*	10.2*	9.3*	9.3*			8.4
20ft lb					22.2*	22.2*	20.5*	20.5*			18.7
4.5m t					11.5*	11.5*	9.4	9.9*			7.5
15ft lb					24.9*	24.9*	20.4	21.5*			16.5
3.0m t					12.5	13.0*	9.1	10.6*	7.0	9.3*	7.0
10ft lb					27.0	28.0*	19.7	23.1*			15.4
1.5m t					12.0	14.1*	8.8	11.2*	6.9	9.5*	6.8
5ft lb					25.3	30.6*	19.1	24.4*			15.1
0m t					11.7	14.6*	8.7	11.5*			7.0
0ft lb					25.3	31.6*	18.7	24.9*			15.5
-1.5m t	15.4*	15.4*	17.8	18.7*	11.6	14.2*	8.6	11.2*			7.6
-5ft lb	34.8*	34.8*	38.2	40.6*	25.0	30.8*	18.6	24.2*			16.8
-3.0m t	21.5*	21.5*	16.6*	16.6*	11.7	12.9*					8.9
-10ft lb	46.7*	46.7*	36.0*	36.0*	25.3	27.8*					19.7
-4.5m t	16.2*	16.2*	13.0*	13.0*	9.6*	9.6*					9.5*
-15ft lb	34.8*	34.8*	27.7*	27.7*							20.8*
-6.0m t											
-20ft lb											
9.0m t											
30ft lb											
7.5m t											9.2*
25ft lb											20.4*
6.0m t					10.3*	10.3*	9.4*	9.4*			8.7
20ft lb					22.4*	22.4*	20.5*	20.5*			19.4
4.5m t					11.6*	11.6*	9.9	9.9*			7.8
15ft lb					25.1*	25.1*	21.3	21.7*			17.3
3.0m t					13.1*	13.1*	9.6	10.7*	7.4	9.3*	7.3
10ft lb					28.3*	28.3*	20.7	23.2*			16.2
1.5m t					12.6	14.2*	9.3	11.3*	7.3	9.5*	7.2
5ft lb					27.2	30.7*	20.1	24.5*			15.9
0m t					12.3	14.6*	9.1	11.5*			7.4
0ft lb					26.6	31.6*	19.7	24.9*			16.4
-1.5m t	16.1*	16.1*	18.6*	18.6*	12.2	14.2*	9.1	11.1*			8.1
-5ft lb	36.5*	36.5*	40.3	40.3*	26.4	30.7*	19.6	24.0*			17.8
-3.0m t	21.5*	21.5*	16.6*	16.6*	11.7	12.9*					8.9
-10ft lb	45.9*	45.9*	35.5*	35.5*	26.7	27.4*					21.1
-4.5m t			12.5*	12.5*							9.4*
-15ft lb			26.7*	26.7*							20.6*
-6.0m t											
-20ft lb											

Height Can be slewed through 360° In longitudinal position of undercarriage Max. reach * Limited by hydr. capacity

The load values are quoted in tons (t) / lb x 1,000 at stick end (without bucket), and may be swung 360° on firm and even ground. Adjacent values are valid for the undercarriage when in the longitudinal position. Capacities are valid for 750 mm / 30" wide track pads. Indicated loads are based on ISO 10567 standard and do not exceed 75% of tipping or 87% of hydraulic capacity (indicated via *). Without bucket cylinder, link and lever the lift capacities will increase by 495 kg / 1,090 lb. Lifting capacity of the excavator is limited by machine stability and hydraulic capacity.

Determine maximum load lift from load lift chart displayed in the operator's cab or from load lift chart detailed in the operator's manual supplied with the machine.

Stick 3.25 m / 10'8"

Under-carriage	3.0m 10ft		4.5m 15ft		6.0m 20ft		7.5m 25ft		9.0m 30ft		m ft in
9.0m t											6.5
30ft lb											
7.5m t							8.8* 8.8*		8.1* 8.1*		7.8
25ft lb									18.0* 18.0*		25'2"
6.0m t							8.9* 8.9*		7.9 8.0*		8.6
20ft lb							19.5* 19.5*		17.6 17.6*		28'1"
4.5m t	20.8* 20.8*						9.5 9.5*	7.1 8.7*	7.0 8.1*		9.1
15ft lb							29.5* 29.5*		15.6 17.9*		29'10"
3.0m t							9.1 10.3*	7.0 9.0*	6.6 8.5*		9.4
10ft lb							17.0* 17.0*		14.6 18.7*		30'8"
1.5m t							17.4* 17.4*		14.6 20.3*		29'10"
5ft lb							38.0 42.6*		6.5 9.0*		9.3
0m t	7.5* 7.5*						11.6 14.4*	6.7 9.4*	6.6 9.2*		9.1
0ft lb	17.4* 17.4*						38.0 42.6*		14.6 20.3*		29'10"
-1.5m t	14.8* 14.8*						11.5 14.3*	8.5 11.2*	7.1 9.4*		8.6
-5ft lb	33.5* 33.5*						24.8 30.9*	18.3 24.2*	15.7 20.8*		28'
-3.0m t	22.9* 22.9*						11.6 13.2*	8.6 10.1*	8.2 9.6*		7.7
-10ft lb	49.8* 49.8*						24.9 28.5*	18.5 21.7*	18.1 21.1*		25'2"
-4.5m t	18.0* 18.0*						10.6* 10.6*		9.4* 9.4*		6.4
-15ft lb	38.7* 38.7*						29.9* 29.9*		20.6* 20.6*		20'8"
-6.0m t											
-20ft lb											
9.0m t									8.6* 8.6*		6.5
30ft lb											
7.5m t							8.7* 8.7*		8.1* 8.1*		7.8
25ft lb							18.6* 18.6*		17.9* 17.9*		25'2"
6.0m t							9.7* 9.7*	8.9* 8.9*	8.0* 8.0*		8.6
20ft lb							21.2* 21.2*	19.5* 19.5*	17.6* 17.6*		28'1"
4.5m t	21.7* 21.7*						11.1* 11.1*	9.6* 9.6*	7.4 8.1*		9.1
15ft lb	45.9* 45.9*						24.0* 24.0*	20.8* 20.8*	16.3 17.9*		29'10"
3.0m t							12.6* 12.6*	9.6 10.3*	6.9 8.6*		9.4
10ft lb							27.2 30.0*	20.0 23.9*	15.1 19.8*		30'8"
1.5m t							12.6 13.8*	9.3 11.0*	7.2 9.3*		9.3
5ft lb							40.9 41.6*	27.2 30.0*	15.5 20.3*		30'8"
0m t	8.2* 8.2*						12.2 14.4*	9.0 11.4*	7.0 9.2*		9.1
0ft lb	18.8* 18.8*						26.4 31.3*	19.5 24.7*	15.4 20.3*		29'10"
-1.5m t	15.5* 15.5*						12.1 14.2*	9.0 11.2*	7.6 9.4*		8.6
-5ft lb	34.9* 34.9*						26.1 30.8*	19.3 24.1*	16.7 20.8*		28'
-3.0m t	22.6* 22.6*						12.2 13.0*	9.0 10.0*	8.8 9.6*		7.7
-10ft lb	49.1* 49.1*						26.3 28.1*	19.6 21.3*	19.4 21.1*		25'2"
-4.5m t	17.5* 17.5*						10.2* 10.2*		9.3* 9.3*		6.4
-15ft lb	37.5* 37.5*						21.6* 21.6*		20.5* 20.5*		20'8"
-6.0m t											
-20ft lb											

Stick 3.95 m / 13'

Under-carriage	3.0m 10ft		4.5m 15ft		6.0m 20ft		7.5m 25ft		9.0m 30ft		m ft in
9.0m t											6.7* 6.7*
30ft lb											7.2
7.5m t								7.7* 7.7*			6.4* 6.4*
25ft lb								17.0* 17.0*			14.1* 14.1*
6.0m t								8.0* 8.0*	6.8* 6.8*		6.3* 6.3*
20ft lb								17.5* 17.5*			13.9* 13.9*
4.5m t								9.8* 9.8*	8.7* 8.7*	7.2 8.0*	6.4 6.5*
15ft lb								21.3* 21.3*	18.9* 18.9*	15.4 17.5*	14.2* 14.2*
3.0m t	13.0* 13.0*							11.5* 11.5*	9.1 9.6*	7.0 8.5*	6.0 6.8*
10ft lb	33.1* 33.1*							24.9* 24.9*	19.7 20.8*	15.0 18.4*	13.3 14.9*
1.5m t	7.1* 7.1*							12.0 13.0*	8.8 10.4*	6.8 8.9*	5.9 7.3*
5ft lb	16.6* 16.6*							26.0 28.2*	18.9 22.6*	14.6 19.3*	13.0 16.2*
0m t	10.0* 10.0*							11.6 14.0*	8.5 11.0*	6.6 9.1*	6.0 8.3*
0ft lb	22.8* 22.8*							25.0 30.3*	18.3 23.9*	14.2 19.8*	13.2 18.2*
-1.5m t	14.7* 14.7*							11.3 14.2*	8.3 11.1*	6.5 9.0*	6.4 8.8*
-5ft lb	33.1* 33.1*							24.4 30.8*	18.0 24.1*	14.1 19.5*	14.0 19.4*
-3.0m t	20.6* 20.6*							11.3 13.6*	8.3 10.6*		7.2 9.1*
-10ft lb	46.6* 46.6*							37.4 39.0*	24.4 29.4*	17.9 22.9*	15.9 20.0*
-4.5m t	21.2* 21.2*							15.6* 15.6*	11.5 11.8*		8.9 9.3*
-15ft lb	45.7* 45.7*							33.5* 33.5*	24.8 25.4*		19.8 20.4*
-6.0m t								11.0* 11.0*			8.8* 8.8*
-20ft lb								22.9* 22.9*			19.5* 19.5*
9.0m t											6.7* 6.7*
30ft lb											7.2
7.5m t									7.7* 7.7*		6.4* 6.4*
25ft lb									17.0* 17.0*		14.1* 14.1*
6.0m t									8.1* 8.1*	7.0* 7.0*	6.3* 6.3*
20ft lb									17.6* 17.6*		13.9* 13.9*
4.5m t								10.0* 10.0*	8.8* 8.8*	7.5 8.1*	6.5* 6.5*
15ft lb								21.6* 21.6*	19.1* 19.1*	16.2 17.6*	14.2* 14.2*
3.0m t	11.4* 11.4*							11.6* 11.6*	9.6 9.7*	7.3 8.5*	6.4 6.8*
10ft lb	28.7* 28.7*							33.5* 33.5*	25.2* 25.2*	20.7 21.0*	15.8 18.5*
1.5m t	7.2* 7.2*							12.6 13.1*	9.2 10.5*	7.1 8.9*	6.2 7.4*
5ft lb	16.8* 16.8*							27.2 28.4*	19.9 22.8*	15.3 19.4*	13.7 16.3*
0m t	10.4* 10.4*							12.2 14.0*	8.9 11.0*	7.0 9.2*	6.4 8.4*
0ft lb	23.5* 23.5*							26.2 30.4*	19.3 23.9*	15.0 19.9*	14.0 18.4*
-1.5m t	15.1* 15.1*							18.3 19.2*	12.0 14.2*	8.8 11.1*	6.8 8.8*
-5ft lb	34.1* 34.1*							39.4 41.5*	25.8 30.7*	19.0 24.1*	15.0 19.4*
-3.0m t	21.2* 21.2*							11.9 13.5*	8.8 10.5*		7.7 9.1*
-10ft lb	47.9* 47.9*							38.7* 38.7*	25.7 29.2*	19.0 22.6*	17.0 20.1*
-4.5m t	20.7* 20.7*							15.3* 15.3*	11.6* 11.6*		9.3* 9.3*
-15ft lb	44.7* 44.7*							32.9* 32.9*	24.8* 24.8*		20.4* 20.4*
-6.0m t								10.4* 10.4*			8.8* 8.8*
-20ft lb								21.6* 21.6*			19.2* 19.2*

Height Can be slewed through 360° In longitudinal position of undercarriage Max. reach * Limited by hydr. capacity

The load values are quoted in tons (t) / lb x 1,000 at stick end (without bucket), and may be swung 360° on firm and even ground. Adjacent values are valid for the undercarriage when in the longitudinal position. Capacities are valid for 750 mm / 30" wide track pads. Indicated loads are based on ISO 10567 standard and do not exceed 75% of tipping or 87% of hydraulic capacity (indicated via *). Without bucket cylinder, link and lever the lift capacities will increase by 495 kg / 1,090 lb. Lifting capacity of the excavator is limited by machine stability and hydraulic capacity.

Determine maximum load lift from load lift chart displayed in the operator's cab or from load lift chart detailed in the operator's manual supplied with the machine.

Lift capacities

with mono boom SME 6.15 m / 20'2", counterweight 8.4 t / 18,520 lb and track pads 750 mm / 30"

Stick SME 2.15 m / 7'1"

Under-carriage	3.0m 10ft		4.5m 15ft		6.0m 20ft		7.5m 25ft		9.0m 30ft		m ft in		
7.5m t					11.2*	11.2*					11.2*	11.2*	6.2
25ft lb					24.9*	24.9*					24.9*	24.9*	19'10"
6.0m t					11.4*	11.4*					9.7	10.7*	7.2
20ft lb					24.9*	24.9*					21.6	23.7*	23'5"
4.5m t			16.1*	16.1*	12.2	12.5*	8.7	10.8*			8.3	10.6*	7.8
15ft lb			34.6*	34.6*	26.4	27.0*	18.8	23.6*			18.4	23.4*	25'6"
3.0m t			17.5	19.0*	11.6	13.7*	8.5	11.3*			7.7	10.7*	8.1
10ft lb			37.8	40.8*	25.1	29.7*	18.3	24.5*			16.9	23.5*	26'6"
S-HD													
1.5m t			16.9	19.2*	11.2	14.6*	8.3	11.6*			7.5	10.8*	8.1
5ft lb			36.3	43.2*	24.2	31.5*	17.9	25.2*			16.5	23.8*	26'5"
0m t			16.8	19.3*	11.0	14.6*	8.2	11.5*			7.8	10.9*	7.8
0ft lb			36.0	41.9*	23.7	31.7*	17.6	24.8*			17.1	24.1*	25'6"
-1.5m t	19.7*	19.7*	16.9	17.6*	11.0	13.7*					8.7	11.0*	7.1
-5ft lb	44.9*	44.9*	36.3	38.3*	23.7	29.6*					19.1	24.2*	23'4"
-3.0m t	17.4*	17.4*	14.6*	14.6*	11.1*	11.1*					10.6*	10.6*	6.1
-10ft lb	37.9*	37.9*	31.5*	31.5*	23.6*	23.6*					23.4*	23.4*	19'10"
-4.5m t													
-15ft lb													
LCV													
7.5m t					11.2*	11.2*					11.2*	11.2*	6.2
25ft lb					24.7*	24.7*					24.7*	24.7*	19'10"
6.0m t			13.6*	13.6*	11.5*	11.5*					10.0	10.7*	7.2
20ft lb			29.3*	29.3*	25.0*	25.0*					22.4	23.7*	23'5"
4.5m t			16.4*	16.4*	12.6*	12.6*	9.2	10.8*			8.7	10.6*	7.8
15ft lb			35.2*	35.2*	27.3*	27.3*	19.8	23.6*			19.2	23.4*	25'6"
3.0m t			18.4	19.2*	12.2	13.8*	8.9	11.3*			8.1	10.7*	8.1
10ft lb			39.7	41.2*	26.4	29.9*	19.3	24.6*			17.8	23.5*	26'6"
1.5m t			17.8	19.5*	11.8	14.6*	8.7	11.6*			7.9	10.8*	8.1
5ft lb			38.3	43.2*	25.5	31.6*	18.8	25.2*			17.5	23.8*	26'5"
0m t			17.7	19.2*	11.6	14.6*	8.6	11.4*			8.3	10.9*	7.8
0ft lb			38.1	41.7*	25.1	31.6*	18.6	24.7*			18.2	24.1*	25'6"
-1.5m t	20.4*	20.4*	17.4*	17.4*	11.6	13.5*					9.3	11.0*	7.1
-5ft lb	44.9*	44.9*	37.9*	37.9*	25.1	29.3*					20.5	24.2*	23'4"
-3.0m t	17.0*	17.0*	14.2*	14.2*	10.7*	10.7*					10.5*	10.5*	6.1
-10ft lb	37.0*	37.0*	30.8*	30.8*							23.2*	23.2*	19'10"
-4.5m t													
-15ft lb													

Stick SME 2.60 m / 8'6"

Under-carriage	3.0m 10ft		4.5m 15ft		6.0m 20ft		7.5m 25ft		9.0m 30ft		m ft in		
7.5m t					10.3*	10.3*					10.3*	10.3*	6.7
25ft lb					22.8*	22.8*					22.7*	22.7*	21'7"
6.0m t					10.7*	10.7*	9.0	10.0*			8.8	9.9*	7.6
20ft lb					23.4*	23.4*					19.7	22.0*	24'11"
4.5m t			15.0*	15.0*	11.9*	11.9*	8.8	10.3*			7.7	9.9*	8.2
15ft lb			32.4*	32.4*	25.7*	25.7*	18.9	22.5*			17.0	21.8*	26'11"
3.0m t			17.8	18.1*	11.7	13.2*	8.5	10.9*			7.1	10.0*	8.5
10ft lb			38.5	38.9*	25.3	28.6*	18.3	23.7*			15.7	22.0*	27'10"
S-HD													
1.5m t			17.0	19.7*	11.2	14.3*	8.2	11.4*			6.9	10.1*	8.5
5ft lb			36.5	42.7*	24.2	30.9*	17.8	24.7*			15.3	22.3*	27'10"
0m t			16.7	19.6*	10.9	14.6*	8.1	11.5*			7.2	10.3*	8.2
0ft lb			35.9	42.6*	23.6	31.6*	17.4	24.9*			15.8	22.7*	26'10"
-1.5m t	18.5*	18.5*	16.7	18.3*	10.9	14.0*	8.1	10.8*			7.9	10.4*	7.6
-5ft lb	41.9*	41.9*	35.9	39.8*	23.5	30.3*	17.5	23.1*			17.4	23.0*	24'11"
-3.0m t	20.0*	20.0*	15.7*	15.7*	11.1	12.1*					9.5	10.3*	6.6
-10ft lb	43.4*	43.4*	34.0*	34.0*	23.9	25.9*					21.2	22.7*	21'6"
-4.5m t			10.8*	10.8*							9.2*	9.2*	
-15ft lb			22.7*	22.7*							20.1*	20.1*	
LCV													
7.5m t					10.3*	10.3*					10.2*	10.2*	6.7
25ft lb					22.7*	22.7*					22.6*	22.6*	21'7"
6.0m t					10.8*	10.8*	9.4	10.0*			9.1	9.9*	7.6
20ft lb					23.5*	23.5*					20.4	21.9*	24'11"
4.5m t			15.3*	15.3*	12.0*	12.0*	9.2	10.3*			8.0	9.9*	8.2
15ft lb			32.9*	32.9*	26.0*	26.0*	19.9	22.6*			17.8	21.8*	26'11"
3.0m t			18.3*	18.3*	12.3	13.3*	8.9	10.9*			7.5	10.0*	8.5
10ft lb			39.4*	39.4*	26.5	28.9*	19.3	23.8*			16.5	22.0*	27'10"
1.5m t			17.9	19.8*	11.8	14.3*	8.7	11.4*			7.4	10.1*	8.5
5ft lb			38.5	42.8*	25.5	31.0*	18.7	24.8*			16.2	22.3*	27'10"
0m t			17.6	19.6*	11.6	14.6*	8.5	11.5*			7.6	10.3*	8.2
0ft lb			37.9	42.5*	24.9	31.6*	18.4	24.8*			16.8	22.7*	26'10"
-1.5m t	19.4*	19.4*	17.7	18.2*	11.5	13.9*	8.6	10.6*			8.4	10.4*	7.6
-5ft lb	44.0*	44.0*	38.0	39.4*	24.9	30.0*					18.6	23.0*	24'11"
-3.0m t	19.6*	19.6*	15.4*	15.4*	11.7	11.8*					10.3*	10.3*	6.6
-10ft lb	42.5*	42.5*	33.4*	33.4*	25.3*	25.3*					22.7*	22.7*	21'6"
-4.5m t													
-15ft lb													

Height Can be slewed through 360° In longitudinal position of undercarriage Max. reach * Limited by hydr. capacity

The load values are quoted in tons (t) / lb x 1,000 at stick end (without bucket), and may be swung 360° on firm and even ground. Adjacent values are valid for the undercarriage when in the longitudinal position. Capacities are valid for 750 mm / 30" wide track pads. Indicated loads are based on ISO 10567 standard and do not exceed 75% of tipping or 87% of hydraulic capacity (indicated by *). Without bucket cylinder, link and lever the lift capacities will increase by 590 kg / 1,300 lb. Lifting capacity of the excavator is limited by machine stability and hydraulic capacity.

Determine maximum load lift from load lift chart displayed in the operator's cab or from load lift chart detailed in the operator's manual supplied with the machine.

Lift capacities

with mono boom SME 6.15 m / 20'2", counterweight 9.4 t / 20,720 lb and track pads 750 mm / 30"

Stick SME 2.15 m / 7'1"

Under-carriage	3.0m 10ft		4.5m 15ft		6.0m 20ft		7.5m 25ft		9.0m 30ft		m ft in
7.5m t					11.2*	11.2*					11.2* 11.2* 6.2
25ft lb					24,9*	24,9*					24,9* 24,9* 19'10"
6.0m t					11.4*	11.4*					10.3 10.7* 7.2
20ft lb					24,9*	24,9*					23,0 23,7* 23'5"
4.5m t		16.1*	16.1*		12.5*	12.5*	9.3	10.8*			8.9 10.6* 7.8
15ft lb		34,6*	34,6*		27,0*	27,0*	20,1	23,6*			19,6 23,4* 25'6"
3.0m t		18.7	19.0*		12.4	13.7*	9.1	11.3*			8.2 10.7* 8.1
10ft lb		40,3	40,8*		26,8	29,7*	19,6	24,5*			18,1 23,5* 26'6"
S-HD 1.5m t		18.0	19.2*		12.0	14.6*	8.8	11.6*			8.0 10.8* 8.1
5ft lb		38,8	43,2*		25,8	31,5*	19,1	25,2*			17,7 23,8* 26'5"
0m t		17.9	19.3*		11.8	14.6*	8.7	11.5*			8.3 10.9* 7.8
0ft lb		38,5	41,9*		25,4	31,7*	18,9	24,8*			18,3 24,1* 25'6"
-1.5m t	19.7*	19.7*	17.6*	17.6*	11.8	13.7*					9.3 11.0* 7.1
-5ft lb	44,9*	44,9*	38,3*	38,3*	25,4	29,6*					20,5 24,2* 23'4"
-3.0m t	17.4*	17.4*	14.6*	14.6*	11.1*	11.1*					10.6* 10.6* 6.1
-10ft lb	37,9*	37,9*	31,5*	31,5*	23,6*	23,6*					23,4* 23,4* 19'10"
-4.5m t											
-15ft lb											
LCV 7.5m t					11.2*	11.2*					11.2* 11.2* 6.2
25ft lb					24,7*	24,7*					24,7* 24,7* 19'10"
6.0m t		13.6*	13.6*		11.5*	11.5*					10.6 10.7* 7.2
20ft lb		29,3*	29,3*		25,0*	25,0*					23,7* 23,7* 23'5"
4.5m t		16.4*	16.4*		12.6*	12.6*	9.8	10.8*			9.2 10.6* 7.8
15ft lb		35,2*	35,2*		27,3*	27,3*	21,0	23,6*			20,4 23,4* 25'6"
3.0m t		19.2*	19.2*		13.0	13.8*	9.5	11.3*			8.6 10.7* 8.1
10ft lb		41,2*	41,2*		28,0	29,9*	20,5	24,6*			18,9 23,5* 26'6"
1.5m t		18.9	19.5*		12.6	14.6*	9.3	11.6*			8.4 10.8* 8.1
5ft lb		40,8	43,2*		27,1	31,6*	20,1	25,2*			18,6 23,8* 26'5"
0m t		18.8	19.2*		12.4	14.6*	9.2	11.4*			8.8 10.9* 7.8
0ft lb		40,5	41,7*		26,7	31,6*	19,9	24,7*			19,4 24,1* 25'6"
-1.5m t	20.4*	20.4*	17.4*	17.4*	12.4	13.5*					9.9 11.0* 7.1
-5ft lb	44,9*	44,9*	37,9*	37,9*	26,8	29,3*					21,9 24,2* 23'4"
-3.0m t	17.0*	17.0*	14.2*	14.2*	10.7*	10.7*					10.5* 10.5* 6.1
-10ft lb	37,0*	37,0*	30,8*	30,8*							23,2* 23,2* 19'10"
-4.5m t											
-15ft lb											

Stick SME 2.60 m / 8'6"

Under-carriage	3.0m 10ft		4.5m 15ft		6.0m 20ft		7.5m 25ft		9.0m 30ft		m ft in
7.5m t											10.3* 10.3* 6.7
25ft lb					22,8*	22,8*					22,7* 22,7* 21'7"
6.0m t					10.7*	10.7*	9.5	10.0*			9.4 9.9* 7.6
20ft lb					23,4*	23,4*					20,9 22,0* 24'11"
4.5m t			15.0*	15.0*	11.9*	11.9*	9.3	10.3*			8.2 9.9* 8.2
15ft lb			32,4*	32,4*	25,7*	25,7*	20,1	22,5*			18,1 21,8* 26'11"
3.0m t			18.1*	18.1*	12.5	13.2*	9.1	10.9*			7.6 10.0* 8.5
10ft lb			38,9*	38,9*	26,9	28,6*	19,5	23,7*			16,8 22,0* 27'10"
S-HD 1.5m t			18.1	19.7*	12.0	14.3*	8.8	11.4*			7.4 10.1* 8.5
5ft lb			39,0	42,7*	25,9	30,9*	19,0	24,7*			16,4 22,3* 27'10"
0m t			17.8	19.6*	11.7	14.6*	8.6	11.5*			7.7 10.3* 8.2
0ft lb			38,4	42,6*	25,3	31,6*	18,7	24,9*			16,9 22,7* 26'10"
-1.5m t	18.5*	18.5*	17.9	18.3*	11.7	14.0*	8.6	10.8*			8.4 10.4* 7.6
-5ft lb	41,9*	41,9*	38,4	39,8*	25,1	30,3*	18,7	23,1*			18,6 23,0* 24'11"
-3.0m t	20.0*	20.0*	15.7*	15.7*	11.8	12.1*					10.2 10.3* 6.6
-10ft lb	43,4*	43,4*	34,0*	34,0*	25,5	25,9*					22,7 22,7* 21'6"
-4.5m t			10.8*	10.8*							9.2* 9.2*
-15ft lb			22,7*	22,7*							20,1* 20,1*
LCV 7.5m t					10.3*	10.3*					10.2* 10.2* 6.7
25ft lb					22,7*	22,7*					22,6* 22,6* 21'7"
6.0m t					10.8*	10.8*	10.0*	10.0*			9.7 9.9* 7.6
20ft lb					23,5*	23,5*					21,6 21,9* 24'11"
4.5m t			15.3*	15.3*	12.0*	12.0*	9.8	10.3*			8.5 9.9* 8.2
15ft lb			32,9*	32,9*	26,0*	26,0*	21,1	22,6*			18,9 21,8* 26'11"
3.0m t			18.3*	18.3*	13.1	13.3*	9.5	10.9*			8.0 10.0* 8.5
10ft lb			39,4*	39,4*	28,2	28,9*	20,5	23,8*			17,6 22,0* 27'10"
1.5m t			19.0	19.8*	12.6	14.3*	9.3	11.4*			7.8 10.1* 8.5
5ft lb			41,0	42,8*	27,1	31,0*	20,0	24,8*			17,3 22,3* 27'10"
0m t			18.8	19.6*	12.3	14.6*	9.1	11.5*			8.1 10.3* 8.2
0ft lb			40,4	42,5*	26,6	31,6*	19,7	24,8*			17,9 22,7* 26'10"
-1.5m t	19.4*	19.4*	18.2*	18.2*	12.3	13.9*	9.1	10.6*			9.0 10.4* 7.6
-5ft lb	44,0*	44,0*	39,4*	39,4*	26,5	30,0*					19,9 23,0* 24'11"
-3.0m t	19.6*	19.6*	15.4*	15.4*	11.8*	11.8*					10.3* 10.3* 6.6
-10ft lb	42,5*	42,5*	33,4*	33,4*	25,3*	25,3*					22,7* 22,7* 21'6"
-4.5m t											
-15ft lb											

Height Can be slewed through 360° In longitudinal position of undercarriage Max. reach * Limited by hydr. capacity

The load values are quoted in tons (t) / lb x 1,000 at stick end (without bucket), and may be swung 360° on firm and even ground. Adjacent values are valid for the undercarriage when in the longitudinal position. Capacities are valid for 750 mm / 30" wide track pads. Indicated loads are based on ISO 10567 standard and do not exceed 75% of tipping or 87% of hydraulic capacity (indicated by *). Without bucket cylinder, link and lever the lift capacities will increase by 590 kg / 1,300 lb. Lifting capacity of the excavator is limited by machine stability and hydraulic capacity.

Determine maximum load lift from load lift chart displayed in the operator's cab or from load lift chart detailed in the operator's manual supplied with the machine.

Lift capacities

with mono boom SME 6.45 m / 21'2", counterweight 8.4 t / 18,520 lb and track pads 750 mm / 30"

Stick SME 2.15 m / 7'1"

Under-carriage	3.0m 10ft		4.5m 15ft		6.0m 20ft		7.5m 25ft		9.0m 30ft		m ft in
7.5m t					10.6* 10.6*					10.5* 10.5*	6.6
25ft lb					23.4* 23.4*					23.3* 23.3*	21'2"
6.0m t					11.1* 11.1*					8.9 10.1*	7.5
20ft lb					24.1* 24.1*					19.9 22.4*	24'6"
4.5m t		16.2* 16.2*			12.0 12.2*		8.7 10.4*			7.7 10.0*	8.1
15ft lb		34.8* 34.8*			26.0 26.5*		18.7 22.7*			17.1 22.1*	26'6"
3.0m t					11.4 13.5*		8.4 11.0*			7.2 10.1*	8.4
10ft lb			34.8* 34.8*		24.7 29.2*		18.1 23.8*			15.8 22.2*	27'6"
1.5m t					11.0 14.3*		8.1 11.4*			7.0 10.2*	8.4
5ft lb					23.7 31.0*		17.5 24.7*			15.4 22.5*	27'6"
0m t			16.5 18.7*		10.8 14.4*		8.0 11.4*			7.2 10.3*	8.1
0ft lb			35.4 40.8*		23.2 31.2*		17.3 24.6*			15.9 22.8*	26'6"
-1.5m t	15.3* 15.3*	16.6 17.2*			10.8 13.6*		8.0 10.5*			8.0 10.4*	7.5
-5ft lb	35.2* 35.2*	35.7 37.5*			23.3 29.4*					17.6 23.0*	24'6"
-3.0m t	17.0* 17.0*	14.7* 14.7*			11.0 11.5*					9.8 10.2*	6.5
-10ft lb	37.1* 37.1*	31.7* 31.7*			23.8 24.7*					21.7 22.4*	21'1"
-4.5m t											
-15ft lb											
7.5m t					10.6* 10.6*					10.5* 10.5*	6.6
25ft lb					23.3* 23.3*					23.2* 23.2*	21'2"
6.0m t		13.5* 13.5*			11.2* 11.2*		9.3 10.1*			9.3 10.1*	7.5
20ft lb		29.0* 29.0*			24.3* 24.3*					20.6 22.3*	24'6"
4.5m t		16.5* 16.5*			12.4* 12.4*		9.1 10.5*			8.1 10.0*	8.1
15ft lb		35.3* 35.3*			26.7* 26.7*		19.6 22.8*			17.9 22.1*	26'6"
3.0m t					12.0 13.6*		8.8 11.0*			7.5 10.1*	8.4
10ft lb					25.9 29.4*		19.0 23.9*			16.6 22.2*	27'6"
1.5m t					11.6 14.4*		8.6 11.4*			7.4 10.2*	8.4
5ft lb					25.0 31.1*		18.5 24.7*			16.3 22.5*	27'6"
0m t		17.4 18.6*			11.4 14.3*		8.5 11.3*			7.7 10.4*	8.1
0ft lb		37.4 40.6*			24.6 31.1*		18.3 24.5*			17.0 22.8*	26'6"
-1.5m t	16.8* 16.8*	17.1* 17.1*			11.4 13.5*					8.5 10.4*	7.5
-5ft lb	38.4* 38.4*	37.2* 37.2*			24.6 29.2*					18.9 22.9*	24'6"
-3.0m t	16.7* 16.7*	14.4* 14.4*			11.3* 11.3*					10.1* 10.1*	6.5
-10ft lb	36.4* 36.4*	31.1* 31.1*			24.1* 24.1*					22.3* 22.3*	21'1"
-4.5m t											
-15ft lb											

Stick SME 2.60 m / 8'6"

Under-carriage	3.0m 10ft		4.5m 15ft		6.0m 20ft		7.5m 25ft		9.0m 30ft		m ft in
7.5m t						9.8* 9.8*					9.6* 9.6*
25ft lb						21.6* 21.6*					21.3* 21.3*
6.0m t						10.4* 10.4*		8.9 9.5*			8.1 9.4*
20ft lb						22.7* 22.7*		19.2 20.9*			18.2 20.7*
4.5m t			15.1* 15.1*			11.7* 11.7*		8.7 10.0*			7.1 9.4*
15ft lb			32.5* 32.5*			25.2* 25.2*		18.7 21.7*			15.8 20.6*
3.0m t			17.4 18.2*			11.5 13.0*		8.4 10.6*			6.6 9.4*
10ft lb			37.5 39.1*			24.8 28.2*		18.1 23.1*			14.7 20.8*
1.5m t			16.5* 16.5*			11.0 14.1*		8.1 11.2*			6.5 9.6*
5ft lb			35.7 40.2*			23.7 30.4*		17.5 24.2*			14.3 21.1*
0m t			16.4 19.2*			10.7 14.4*		7.9 11.3*			6.7 9.8*
0ft lb			35.2 41.8*			23.1 31.1*		17.1 24.5*			14.7 21.5*
-1.5m t	15.3* 15.3*	16.4 18.0*			10.7 13.8*		7.9 10.8*				7.3 9.9*
-5ft lb	34.8* 34.8*	35.3 39.1*			23.0 30.0*		17.1 23.3*				16.1 21.8*
-3.0m t	19.5* 19.5*	15.7* 15.7*			10.8 12.2*						8.7 9.8*
-10ft lb	42.5* 42.5*	34.0* 34.0*			23.4 26.3*						19.2 21.7*
-4.5m t											9.1* 9.1*
-15ft lb											19.9* 19.9*
7.5m t						9.9* 9.9*					9.6* 9.6*
25ft lb						21.6* 21.6*					21.3* 21.3*
6.0m t						10.5* 10.5*		9.4 9.5*			8.5 9.4*
20ft lb						22.9* 22.9*		20.2 20.9*			18.9 20.7*
4.5m t			15.4* 15.4*			11.8* 11.8*		9.1 10.0*			7.5 9.4*
15ft lb			33.0* 33.0*			25.5* 25.5*		19.7 21.8*			16.6 20.6*
3.0m t			18.2 18.4*			12.1 13.2*		8.8 10.7*			7.0 9.4*
10ft lb			39.3 39.5*			26.1 28.4*		19.0 23.2*			15.5 20.8*
1.5m t			16.6* 16.6*			11.6 14.1*		8.5 11.2*			6.9 9.6*
5ft lb			37.6 40.3*			25.0 30.6*		18.4 24.3*			15.2 21.2*
0m t			17.3 19.1*			11.3 14.3*		8.4 11.3*			7.1 9.8*
0ft lb			37.2 41.6*			24.5 31.1*		18.1 24.5*			15.7 21.5*
-1.5m t	16.3* 16.3*	17.4 17.8*			11.3 13.7*		8.4 10.7*				7.8 9.9*
-5ft lb	36.9* 36.9*	37.4 38.7*			24.4 29.8*		18.1 23.1*				17.2 21.8*
-3.0m t	19.2* 19.2*	15.4* 15.4*			11.5 12.0*						9.3 9.8*
-10ft lb	41.8* 41.8*	33.4* 33.4*			24.8 25.9*						20.8 21.6*
-4.5m t											9.0* 9.0*
-15ft lb											19.5* 19.5*

Height Can be slewed through 360° In longitudinal position of undercarriage Max. reach * Limited by hydr. capacity

The load values are quoted in tons (t) / lb x 1,000 at stick end (without bucket), and may be swung 360° on firm and even ground. Adjacent values are valid for the undercarriage when in the longitudinal position. Capacities are valid for 750 mm / 30" wide track pads. Indicated loads are based on ISO 10567 standard and do not exceed 75% of tipping or 87% of hydraulic capacity (indicated by *). Without bucket cylinder, link and lever the lift capacities will increase by 590 kg / 1,300 lb. Lifting capacity of the excavator is limited by machine stability and hydraulic capacity.

Determine maximum load lift from load lift chart displayed in the operator's cab or from load lift chart detailed in the operator's manual supplied with the machine.

Lift capacities

with mono boom SME 6.45 m / 21'2", counterweight 9.4 t / 20,720 lb and track pads 750 mm / 30"

Stick SME 2.15 m / 7'1"

Under-carriage	3.0m 10ft		4.5m 15ft		6.0m 20ft		7.5m 25ft		9.0m 30ft		m ft in
7.5m t					10.6* 10.6*					10.5* 10.5*	6.6
25ft lb					23.4* 23.4*					23.3* 23.3*	21'2"
6.0m t					11.1* 11.1*					9.5 10.1*	7.5
20ft lb					24.1* 24.1*					21.2 22.4*	24'6"
4.5m t		16.2* 16.2*			12.2* 12.2*	9.2 10.4*				8.2 10.0*	8.1
15ft lb		34.8* 34.8*			26.5* 26.5*	19.9 22.7*				18.3 22.1*	26'6"
3.0m t					12.2 13.5*	8.9 11.0*				7.7 10.1*	8.4
10ft lb			34.8* 34.8*		26.3 29.2*	19.3 23.8*				16.9 22.2*	27'6"
S-HD											
1.5m t					11.7 14.3*	8.7 11.4*				7.5 10.2*	8.4
5ft lb					25.3 31.0*	18.8 24.7*				16.5 22.5*	27'6"
0m t		17.6 18.7*			11.5 14.4*	8.6 11.4*				7.7 10.3*	8.1
0ft lb		37.9 40.8*			24.9 31.2*	18.5 24.6*				17.1 22.8*	26'6"
-1.5m t	15.3* 15.3*	17.2* 17.2*			11.5 13.6*	8.6 10.5*				8.5 10.4*	7.5
-5ft lb	35.2* 35.2*	37.5* 37.5*			24.9 29.4*					18.9 23.0*	24'6"
-3.0m t	17.0* 17.0*	14.7* 14.7*			11.5* 11.5*					10.2* 10.2*	6.5
-10ft lb	37.1* 37.1*	31.7* 31.7*			24.7* 24.7*					22.4* 22.4*	21'1"
-4.5m t											
-15ft lb											
LCV											
7.5m t					10.6* 10.6*					10.5* 10.5*	6.6
25ft lb					23.3* 23.3*					23.2* 23.2*	21'2"
6.0m t		13.5* 13.5*			11.2* 11.2*	9.9 10.1*				9.8 10.1*	7.5
20ft lb		29.0* 29.0*			24.3* 24.3*					21.9 22.3*	24'6"
4.5m t		16.5* 16.5*			12.4* 12.4*	9.7 10.5*				8.6 10.0*	8.1
15ft lb		35.3* 35.3*			26.7* 26.7*	20.9 22.8*				19.1 22.1*	26'6"
3.0m t					12.8 13.6*	9.4 11.0*				8.0 10.1*	8.4
10ft lb					27.6 29.4*	20.3 23.9*				17.7 22.2*	27'6"
1.5m t					12.3 14.4*	9.1 11.4*				7.9 10.2*	8.4
5ft lb					26.6 31.1*	19.8 24.7*				17.4 22.5*	27'6"
0m t		18.6 18.6*			12.2 14.3*	9.0 11.3*				8.2 10.4*	8.1
0ft lb		39.9 40.6*			26.2 31.1*	19.5 24.5*				18.1 22.8*	26'6"
-1.5m t	16.8* 16.8*	17.1* 17.1*			12.2 13.5*					9.1 10.4*	7.5
-5ft lb	38.4* 38.4*	37.2* 37.2*			26.3 29.2*					20.1 22.9*	24'6"
-3.0m t	16.7* 16.7*	14.4* 14.4*			11.3* 11.3*					10.1* 10.1*	6.5
-10ft lb	36.4* 36.4*	31.1* 31.1*			24.1* 24.1*					22.3* 22.3*	21'1"
-4.5m t											
-15ft lb											

Stick SME 2.60 m / 8'6"

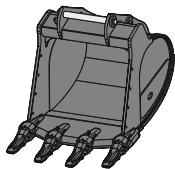
Under-carriage	3.0m 10ft		4.5m 15ft		6.0m 20ft		7.5m 25ft		9.0m 30ft		m ft in
7.5m t					9.8* 9.8*					9.6* 9.6*	7.1
25ft lb					21.6* 21.6*					21.3* 21.3*	22'11"
6.0m t					10.4* 10.4*		9.5 9.5*			8.7 9.4*	8.0
20ft lb					22.7* 22.7*		20.4 20.9*			19.3 20.7*	26'
4.5m t		15.1* 15.1*			11.7* 11.7*	9.3 10.0*				7.6 9.4*	8.5
15ft lb		32.5* 32.5*			25.2* 25.2*	20.0 21.7*				16.9 20.6*	27'11"
3.0m t		18.2* 18.2*			12.3 13.0*	8.9 10.6*				7.1 9.4*	8.8
10ft lb		39.1* 39.1*			26.5 28.2*	19.3 23.1*				15.7 20.8*	28'10"
S-HD											
1.5m t		16.5* 16.5*			11.8 14.1*	8.7 11.2*				7.0 9.6*	8.8
5ft lb		38.2 40.2*			25.4 30.4*	18.7 24.2*				15.4 21.1*	28'10"
0m t		17.5 19.2*			11.5 14.4*	8.5 11.3*				7.2 9.8*	8.5
0ft lb		37.7 41.8*			24.8 31.1*	18.3 24.5*				15.8 21.5*	27'11"
-1.5m t	15.3* 15.3*	17.6 18.0*			11.4 13.8*	8.5 10.8*				7.8 9.9*	7.9
-5ft lb	34.8* 34.8*	37.8 39.1*			24.7 30.0*	18.3 23.3*				17.2 21.8*	26'
-3.0m t	19.5* 19.5*	15.7* 15.7*			11.6 12.2*					9.3 9.8*	7.0
-10ft lb	42.5* 42.5*	34.0* 34.0*			25.0 26.3*					20.6 21.7*	22'11"
-4.5m t		11.6* 11.6*								9.1* 9.1*	5.5
-15ft lb		24.7* 24.7*								19.9* 19.9*	17'10"
LCV											
7.5m t					9.9* 9.9*					9.6* 9.6*	7.1
25ft lb					21.6* 21.6*					21.3* 21.3*	22'11"
6.0m t					10.5* 10.5*	9.5* 9.5*				9.0 9.4*	8.0
20ft lb					22.9* 22.9*	20.9* 20.9*				20.0 20.7*	26'
4.5m t		15.4* 15.4*			11.8* 11.8*	9.7 10.0*				8.0 9.4*	8.5
15ft lb		33.0* 33.0*			25.5* 25.5*	20.9 21.8*				17.7 20.6*	27'11"
3.0m t		18.4* 18.4*			12.8 13.2*	9.4 10.7*				7.5 9.4*	8.8
10ft lb		39.5* 39.5*			27.7 28.4*	20.3 23.2*				16.5 20.8*	28'10"
1.5m t		16.6* 16.6*			12.4 14.1*	9.1 11.2*				7.4 9.6*	8.8
5ft lb		40.1 40.3*			26.7 30.6*	19.7 24.3*				16.2 21.2*	28'10"
0m t		18.5 19.1*			12.1 14.3*	9.0 11.3*				7.6 9.8*	8.5
0ft lb		39.7 41.6*			26.1 31.1*	19.3 24.5*				16.7 21.5*	27'11"
-1.5m t	16.3* 16.3*	17.8* 17.8*			12.1 13.7*	8.9 10.7*				8.3 9.9*	7.9
-5ft lb	36.9* 36.9*	38.7* 38.7*			26.0 29.8*	19.3 23.1*				18.4 21.8*	26'
-3.0m t	19.2* 19.2*	15.4* 15.4*			12.0* 12.0*					9.8* 9.8*	7.0
-10ft lb	41.8* 41.8*	33.4* 33.4*			25.9* 25.9*					21.6* 21.6*	22'11"
-4.5m t		11.1* 11.1*								9.0* 9.0*	5.5
-15ft lb		23.6* 23.6*								19.5* 19.5*	17'10"

Height Can be slewed through 360° In longitudinal position of undercarriage Max. reach * Limited by hydr. capacity

The load values are quoted in tons (t) / lb x 1,000 at stick end (without bucket), and may be swung 360° on firm and even ground. Adjacent values are valid for the undercarriage when in the longitudinal position. Capacities are valid for 750 mm / 30" wide track pads. Indicated loads are based on ISO 10567 standard and do not exceed 75% of tipping or 87% of hydraulic capacity (indicated by *). Without bucket cylinder, link and lever the lift capacities will increase by 590 kg / 1,300 lb. Lifting capacity of the excavator is limited by machine stability and hydraulic capacity.

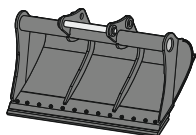
Determine maximum load lift from load lift chart displayed in the operator's cab or from load lift chart detailed in the operator's manual supplied with the machine.

Attachments



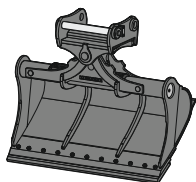
Backhoe bucket TL 06

Mounting	direct mounting, SWA 66 mechanical, SWA 66 hydraulic, SWA 66 Solidlink										
Cutting width	mm / ft in	1,050 ²⁾ / 3'5" ²⁾	1,200 / 3'11"	1,350 / 4'5"	1,500 / 4'11"	1,600 / 5'3"	1,600 / 5'3"	1,650 / 5'5"	1,800 / 5'11"	1,800 / 5'11"	1,850 / 6'1"
Capacity	m ³ / yd ³	1.00 / 1.31	1.25 / 1.63	1.50 / 1.96	1.75 / 2.29	1.90 / 2.48	2.15 / 2.81	2.00 / 2.62	2.50 / 3.27	2.75 / 3.60	3.00 / 3.92
Weight ¹⁾	kg / lb	1,125 / 2,480	1,270 / 2,800	1,355 / 2,987	1,440 / 3,175	1,640 / 3,616	1,700 / 3,748	1,600 / 3,527	1,830 / 4,034	1,880 / 4,145	1,940 / 4,277



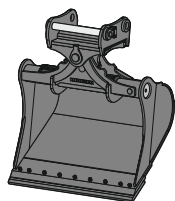
Ditch cleaning bucket GRL rigid 06

Mounting	direct mounting, SWA 66 mechanical, SWA 66 hydraulic, SWA 66 Solidlink				
Cutting width	mm / ft in	2,200 / 7'3"	2,400 / 7'10"	2,800 / 9'2"	2,800 / 9'2"
Capacity	m ³ / yd ³	1.65 / 2.16	1.50 / 1.96	2.60 / 3.40	2.90 / 3.79
Weight ¹⁾	kg / lb	1,050 / 2,315	964 / 2,125	1,522 / 3,355	1,561 / 3,441



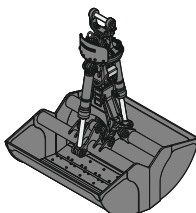
Ditch cleaning bucket GRL 100

Mounting	direct mounting, SWA 66 mechanical, SWA 66 hydraulic, SWA 66 Solidlink						
Cutting width	mm / ft in	2,000 / 6'7"	2,000 / 6'7"	2,000 / 6'7"	2,200 / 7'3"	2,400 / 7'10"	2,400 / 7'10"
Capacity	m ³ / yd ³	0.70 / 0.92	1.20 / 1.57	1.45 / 1.90	1.65 / 2.16	0.85 / 1.11	1.45 / 1.90
Weight ¹⁾	kg / lb	1,375 / 3,031	1,520 / 3,351	1,600 / 3,527	1,675 / 3,693	1,480 / 3,263	1,625 / 3,583
Tilt angle		2 x 50°	2 x 50°	2 x 50°	2 x 50°	2 x 50°	2 x 50°



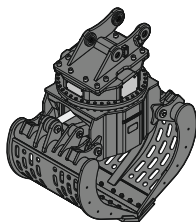
Tilt bucket SL 100

Mounting	direct mounting, SWA 66 mechanical, SWA 66 hydraulic, SWA 66 Solidlink					
Cutting width	mm / ft in	1,600 / 5'3"	1,600 / 5'3"	1,700 ³⁾ / 5'7" ³⁾	1,800 / 5'11"	1,800 ³⁾ / 5'11" ³⁾
Capacity	m ³ / yd ³	1.45 / 1.90	1.75 / 2.29	1.85 / 2.42	1.60 / 2.09	2.00 / 2.62
Weight ¹⁾	kg / lb	1,520 / 3,351	1,630 / 3,594	1,800 / 3,968	1,610 / 3,549	1,860 / 4,101
Tilt angle		2 x 50°	2 x 50°	2 x 50°	2 x 50°	2 x 50°



Clamshell grab GMZ 80 with clamshell buckets

Mounting	direct mounting, SWA 66 mechanical, SWA 66 hydraulic, SWA 66 Solidlink, SWA 77 mechanical, SWA 77 hydraulic								
Shell width	mm / ft in	1,200 / 3'11"	1,200 / 3'11"	1,400 / 4'7"	1,400 / 4'7"	1,650 / 5'5"	1,650 / 5'5"	2,000 / 6'7"	2,000 / 6'7"
Capacity ⁴⁾	m ³ / yd ³	1.40 / 1.83	1.40 / 1.83	1.70 / 2.22	1.70 / 2.22	2.00 / 2.62	2.00 / 2.62	2.50 / 3.27	2.50 / 3.27
Opening width	mm / ft	2,128 / 7'	2,128 / 7'	2,128 / 7'	2,128 / 7'	2,128 / 7'	2,128 / 7'	2,128 / 7'	2,128 / 7'
Weight ⁵⁾	kg / lb	2,170 ⁶⁾ / 4,784 ⁶⁾	2,130 / 4,696	2,275 ⁶⁾ / 5,016 ⁶⁾	2,225 / 4,905	2,415 ⁶⁾ / 5,324 ⁶⁾	2,345 / 5,170	2,595 ⁶⁾ / 5,721 ⁶⁾	2,520 / 5,556



Sorting grab SG 40

Mounting	direct mounting, SWA 66 mechanical, SWA 66 hydraulic, SWA 66 Solidlink, SWA 77 mechanical, SWA 77 hydraulic, SWA 77 Solidlink				
Shell type		perforated		ribbed	
Shell width	mm / ft in	1,100 / 3'7"	1,300 / 4'3"	1,100 / 3'7"	1,300 / 4'3"
Capacity	m ³ / yd ³	1.30 / 1.70	1.60 / 2.09	1.10 / 1.44	1.40 / 1.83
Max. closing force	kN / lbf	100 / 22,481	100 / 22,481	100 / 22,481	100 / 22,481
Weight ⁷⁾	kg / lb	2,505 / 5,523	2,595 / 5,721	2,585 / 5,699	2,695 / 5,941

¹⁾ based on an attachment in a standard design with SWA 66 Solidlink quick coupler mounting

²⁾ for SWA 66 quick coupler mounting only

³⁾ HD version

⁴⁾ capacity specifications are theoretically determined values; fill level varies depending on the material being loaded

⁵⁾ with XHD suspension

⁶⁾ incl. teeth

⁷⁾ with standard bolt-on cutting edge, without quick coupler mounting

Serial equipment

Undercarriage

Lashing eyes
Sprocket with dirt ejector
Track and carrier rollers, sealed and lifetime-lubricated

Upperstructure

Access platforms without protruding parts
Anti-skid surfaces
Automatic swing brake lock
DEF tank filling indicator
DEF tank lockable access hatch
Engine hood with gas spring opening
Filters accessible from ground level
Handrails
Hydraulic oil level, visible from ground level
Lockable service doors
Lockable storage and accessories compartment
Lockable storage box
Main switch, accessible from ground level
Main switch, electric, with timer
Main switch, manual, lockable
Positioning swing brake manual
Protection grid on radiator fan
Safe upperstructure side access platform
Sound insulation
Swing-out radiators
Windshield washer fluid tank, accessible from ground level

Hydraulic system

Dedicated swing circuit
Filter with integrated fine filters
Hydraulic pressure measuring ports
Liebherr Positive Control system with 2 independent circuits
Magnetic rod
Pressure accumulator for controlled lowering of equipment with engine turned off

Engine

Air filter with automatic dust ejector
Automatic engine idling / speed increase, controlled via joystick sensors
Common-Rail injection system
Engine oil level gauge
Exhaust gas after-treatment system – SCR
Fixed geometry turbocharger
Fuel fine filter
Fuel pre-filter and water separator
Fuel priming pump
Intercooler
Power Pack US EPA Tier 4 Final

Cab

9" multifunction color touchscreen
Air conditioning, automatic, tri-zone, controlled via display
Armrests adjustable in length, height and inclination
Bottle holder
Cab air filters housing, accessible from ground level
Cab door sliding windows
Cigarette lighter
Coat hook
DEF consumption on touchscreen
DEF level on touchscreen
Electric socket in cab (12V)
Electric socket in cab (24V)
Emergency hammer
Engine coolant level, visible from the cab
Engine oil level on touchscreen
Fuel consumption on touchscreen
Fuel level on touchscreen
Hydraulic oil level on touchscreen
Interior lighting
Laminated right hand side window
LiDAT Plus (Liebherr data transfer system)
Mechanical hour meter, visible from ground level
Mobile phone storage net
Movement priority between swing and boom, adjustable via touchscreen
Movement priority for stick-in, adjustable via touchscreen
Operating modes
Power modes
Rain hood over front window opening
Rearview mirror
Rear view monitoring camera
Rear window emergency exit
Right hand side view monitoring camera
Roll-down sun blinds for windscreen and roof window
ROPS safety cab structure (ISO 12117-2)
Rubber floor mat, fixed on floor and removable
Shortcut buttons on joystick configurable
Stepless adjustable engine speed
Storage box
Storage nets
Storage spaces
Swing braking torque adjustable via touchscreen
Swing drive gearbox oil level, visible from the cab
Tilttable console left
Tinted windows
Visco-elastic damping
Windscreen wiper and washer

Equipment

Anti-drift system boom cylinders
Anti-drift system stick cylinder
Boom cylinders regeneration
Pipe fracture safety valve for stick cylinder
Pipe fracture safety valves for boom cylinders
Pivot points made of cast steel
SAE split flanges on high pressure lines
Stick cylinder regeneration

Equipment standard / option

Undercarriage

Chain guide 3 pieces	●
Chain guide 4 pieces	+
Chain guide full length	+
Cover and base plate for undercarriage center section	●
Reinforced cover and base plate for center section (LC-V undercarriage)	+
Reinforced cover plate for center section (LC-V undercarriage)	+
Screws protection for sideframe (LC-V undercarriage)	+
Special painting	+
Steps	●
Steps wide	+
Track chains cleaner (S-HD undercarriage)	+
Track pads triple grouser reinforced 600 mm / 24" / 900 mm / 35"	+
Track pads triple grouser reinforced 750 mm / 30"	●
Tracks, sealed and greased, reinforced	●
Travel drive gearbox protection	+
Travel motor housing protection	+
Undercarriage LC-V	+
Undercarriage S-HD	+
Undercarriage storage compartment (S-HD undercarriage)	+

Uppercarriage

Batteries high capacity	+
Batteries standard capacity	●
Boxing ring	+
Catwalk tiltable front left	+
Centralized lubrication system (automatic)	●
Centralized lubrication system (manual)	+
Counterweight heavy 9.4 t / 20,720 lb	+
Counterweight standard 8.4 t / 18,520 lb	●
Electric socket on uppercarriage (24 V)	+
Extended tool set including tool box	+
External starting aid (24 V)	+
Front right rearview mirror	+D
Fuel anti-theft protection	+
Headlight on uppercarriage, front left, LED+, 1 piece, protection included	+D
Headlight on uppercarriage, front right, LED, 1 piece, protection included	●D
Headlight on uppercarriage, front right, LED+, 1 piece, protection included	+D
Headlight on uppercarriage, lateral left, LED+, 1 piece	+D
Headlight on uppercarriage, lateral right, LED+, 1 piece	+D
Headlights on uppercarriage, rear, LED+, 2 pieces	+D
Lighting for tank area	+D
Lighting for uppercarriage access	+D
Lockable fuel tank cap	●
Lockable fuel tank cap with padlock	+
Reflective warning stickers	+
Rotating beacons on uppercarriage, rear, LED, 2 pieces	+
Skyview 360°	+
Special painting	+
Tank refilling pump fuel	+
Tool set including storage case	●
Uppercarriage bottom and side protection	+
Uppercarriage bottom closure sheets	●

Hydraulic system

Bypass filter for hydraulic oil	+
Filter for hydraulic hammer return flow	+
High pressure circuit bypass	+
High pressure circuit flow summation	+
High pressure circuit switchable on pedals or mini-joystick	+
High pressure circuit with Tool Control (20 attachment adjustments on display)	+
Leak oil line for attachment	+
Liebherr hydraulic oil	●
Liebherr hydraulic oil, adapted for extreme climate conditions	+
Liebherr hydraulic oil, biodegradable	+
Medium pressure circuit	+

Engine

Air pre-filter with cyclonical dust trap	+
Automatic engine shutdown after idling	+
Engine shut-down with overrun	+
Lighting for engine compartment	+D
Preheating fuel	+
Radiator fine mesh protection grid	+
Reversible fan drive	+



Cab

3" seat belt with retractor, orange color	●
4-points seat belt	+
Acoustic travel alarm deactivatable	+
Auxiliary heater programmable	+
Bottom windscreen wiper	+
Coming / Leaving Home	+ ¹⁾
Cool box (12V)	+
Dark tinted windows	+
Electrically adjustable and heated outside rear-view mirrors	+ ¹⁾
Electronic immobilizer	+
Emergency stop in cab	+
FGPS front guard	+
FGPS front guard tiltable	+
Fire extinguisher	+
First-aid box	+
Footrest	+
FOPS top guard	+
FOPS top guard flat	+
Handrests elevated for joysticks	+
Headlights on cab, front, LED, 2 pieces	● ¹⁾
Headlights on cab, front, LED+, 2 pieces	+ ¹⁾
Headlights on cab roof, front, LED+, 2 pieces	+ ¹⁾
Impact resistant one-piece windscreen	+
Impact resistant roof window	+
Independent travel	+ ¹⁾
Integral protection guard	+
Laminated roof window	●
Lightbar on cab	+
Lighting for cab access	+ ¹⁾
Luminosity control (LED+ headlights)	+
Mini-joysticks proportional	●
Movement restriction for boom	+
Movement restriction for stick	+
Operator's seat Comfort	●
Operator's seat Premium	+
Overload warning system	+
Personalized operator profile	+
Preparation for tiltrotator	+
Radio Comfort	+
Radio pre-installation	●
Remote cab lock	+ ¹⁾
Retractable laminated two-piece windscreen	●
Roof sun shield	+
Roof window wiper	+
Rotating beacon on cab, LED, 1 piece	+
Seat belt reminder	+
Smart Key	+ ¹⁾
Special painting	+
Straight travel via mini-joystick	+ ¹⁾
Sun visor	+
Switch between high pressure and bucket cylinder controls	+
Travel speed management	+ ¹⁾
Windscreen bottom protection grid	+



Equipment

Boom bottom protection	+
Boom cylinders rod protection	+
Bucket cylinder rod protection	+
Centralized lubrication extended for connecting link	+
Floating boom	+
Grapple hydraulic lines (bucket cylinder inactive)	+
Headlight guard on boom, right	+
Headlight guards on boom, right and left	+
Headlight on boom, left, LED+, 1 piece	+ ¹⁾
Headlight on boom, right, LED, 1 piece	● ¹⁾
Headlight on boom, right, LED+, 1 piece	+ ¹⁾
Headlight on stick, bottom, LED+, 1 piece	+ ¹⁾
Hydraulic hose guard Solidlink	+
Liebherr bucket range	+
Liebherr tooth system	+
Load holding valve for bucket cylinder	+
Lubrication hoses protection on stick	+
Mono boom 6.45 m / 21'2"	+
Mono boom SME 6.15 m / 20'2"	+
Mono boom SME 6.45 m / 21'2"	+
Quick coupler SWA 66 hydraulic	+
Quick coupler SWA 66 mechanical	+
Solidlink electric signal plug	+
Solidlink for quick coupler SWA 66 hydraulic	+
Special painting	+
Stick 2.60 m / 8'6"	+
Stick 2.90 m / 9'6"	+
Stick 3.25 m / 10'8"	+
Stick 3.95 m / 13'	+
Stick bottom protection	+
Stick SME 2.15 m / 7'1"	+
Stick SME 2.60 m / 8'6"	+
Tool Management	+



Assistance system

Machine guidance system Leica 2D passive - "3D ready"	+
Machine guidance system Leica 2D semi-automatic - "3D ready"	+
Machine guidance system Leica 3D passive	+
Machine guidance system Leica 3D semi-automatic	+
Preparation for machine guidance system	+
Preparation for weighing system	+

● = Standard, + = Option

¹⁾ Equipment not individually available, but only as predefined packages

Non-exhaustive list, please contact us for further information.

Options and / or special equipment, supplied by vendors other than Liebherr, are only to be installed with the knowledge and approval of Liebherr in order to retain warranty.

The Liebherr Group



Global and independent: more than 75 years of success

Liebherr was founded in 1949. With the development of the world's first mobile tower crane, Hans Liebherr laid the foundations of a successful family-run company which today comprises more than 150 companies on all continents with over 50,000 employees. The holding company of the Group is Liebherr-International AG in Bulle (Switzerland), whose shareholders are exclusively members of the Liebherr family.

Technology leadership and pioneering spirit

Liebherr regards itself as a pioneer. This spirit has enabled the company to make a decisive contribution to the technological history of many industries. Today, employees around the world still share the courage of the company founder to take new paths. They are all united by a passion for technology and fascinating products and the determination to perform outstanding work for their customers.

Widely diversified product program

Not only is Liebherr one of the biggest construction machine manufacturers in the world, it also provides high-quality, user-oriented products and services in a wide range of other areas. The product range includes the segments earthmoving, material handling, deep foundation, mining, mobile and crawler cranes, tower cranes, concrete technology, maritime cranes, aerospace and transportation systems, gear technology and automation systems, refrigerators and freezers, components and hotels.

Customized solutions and maximum customer value

Liebherr solutions are characterized by maximum precision, outstanding implementation and exceptional longevity. Its mastery of key technologies enables the company to offer its customers customized solutions. For Liebherr, customer focus does not end with the product; it also encompasses a wide range of services that make a real difference.

www.liebherr.us

WARNING

Breathing diesel engine exhaust exposes you to chemicals known to the State of California to cause cancer and birth defects or other reproductive harm.

- Always start and operate the engine in a well-ventilated area.
- If in an enclosed area, vent the exhaust to the outside.
- Do not modify or tamper with exhaust system.
- Do not idle the engine except as necessary.

For more information go to www.P65warnings.ca.gov/diesel.

WARNING

This product can expose you to chemicals including lead and lead compounds, which are known to the State of California to cause cancer and birth defects or other reproductive harm.

For more information go to www.P65warnings.ca.gov.

Liebherr USA, Co.

Construction Equipment Division • 4800 Chestnut Avenue • Newport News, VA 23607, USA • Phone +1 (757) 240 4250
construction.usa@liebherr.com • www.liebherr.us • www.facebook.com/LiebherrConstruction