

---

# A 915 Compact Litronic

---

## LIEBHERR

Wheeled excavator



**Generation**  
8

**Operating weight**  
15,400–17,200 kg

**Engine**  
105 kW / 143 HP  
Stage V  
Tier 4 Final

**Bucket capacity**  
0.17–0.87 m<sup>3</sup>

# Compact wheeled excavators at a glance

## Innovative cab design meets intuitive controls

- Newly developed cab with advanced intuitive operating and dual display concept INTUSI
  - 10" main display and haptic user feedback
  - 3.5" display with additional user interface for prio functions
- Smart functions such as personalisable operation and advanced hot-key navigation
- Integration of assistance systems in a user interface
- Intuitive control and feedback logic
- Customisable joystick configurations
- Proportional control with 4-way mini-joystick
- Large glass surfaces for a more direct view of the work area
- More legroom thanks to longer cab
- Convenient radio operation with hands-free system
- Automatic air conditioning (as standard)
- Powerful LED headlights (as standard)
- Joystick steering (optional)
- Comfort/Premium operator's seat (optional)
- Top and front protective guards, foldable (optional)

## Optimally designed and laid out equipment for maximum reliability

- Various boom versions and stick lengths
- Liebherr hydraulic cylinders
- Pipe fracture safety valves for hoist and stick cylinders
- Overload warning system (as standard)
- Ride control (optional)
- Liebherr quick coupling systems (optional)
- Wide selection of Liebherr attachments (optional)





## Superior technology for highest economy

- Liebherr diesel engine complies with emission stage V
- Exhaust gas treatment with Liebherr-SCRT technology
- Liebherr-Power-Efficiency (LPE)
- Load sensing control
- Selection of different operating modes (Sensitive, ECO, Power, Power-Plus)
- Sensor-controlled low idle automatic

## Sophisticated maintenance concept for maximum productivity

- Fully automatic central lubrication system for upper-carriage and equipment
- Large, wide-opening service doors
- Central maintenance points, including air filter and wiper water on the cab, easily accessible from the ground

## Perfect combination for maximum performance

- Short tail radius
- Different stabilization variants available, welded on
- Liebherr tyres without intermediate ring
- Travel drive integrated in undercarriage
- Automatic digging brake

## Next-generation assistance systems

- Seamless bird's eye view of the machine environment with Skyview 360°
- Higher productivity through precise control of the working plane with 2D and 3D machine control
- More comfortable working in confined spaces with the Advanced working envelope limitation
- MiC 4.0 BUS enables cross-manufacturer communication between construction machines and attachments



# Technical data



## Diesel engine

<b>Rating per ISO 9249</b>	105 kW (143 HP) at 1,800 RPM
<b>Model</b>	D924 - FPT motor designed for Liebherr
<b>Type</b>	4 cylinder in-line
<b>Bore / Stroke</b>	104 / 132 mm
<b>Displacement</b>	4.5 l
<b>Engine operation</b>	4-stroke diesel Common-Rail Turbo-charged and after-cooled Reduced emissions
<b>Air cleaner</b>	Dry-type air cleaner with pre-cleaner, primary and safety elements
<b>Engine idling</b>	Sensor controlled
<b>Electrical system</b>	
<b>Voltage</b>	24 V
<b>Batteries</b>	2 x 145 Ah / 12 V
<b>Alternator</b>	Three-phase current 28 V / 140 A
<b>Stage V</b>	
<b>Harmful emissions values</b>	According to regulation (EU) 2016/1628
<b>Emission control</b>	Liebherr-SCR technology
<b>Fuel tank</b>	243 l
<b>Urea tank</b>	46 l
<b>Tier 4 Final</b>	
<b>Harmful emissions values</b>	In accordance with 40CFR1039 (EPA) / 13CCR (CARB)
<b>Emission control</b>	Liebherr-SCR technology
<b>Option</b>	Liebherr particle filter
<b>Fuel tank</b>	243 l
<b>Urea tank</b>	46 l



## Cooling system

<b>Diesel engine</b>	Water-cooled Compact cooling system consisting cooling unit for water, hydraulic oil and charge air with stepless thermostatically controlled fan, fans for radiator cleaning can be completely folded away
----------------------	--



## Hydraulic controls

<b>Power distribution</b>	Via control valves with integrated safety valves, simultaneous and independent actuation of chassis, swing drive and equipment
<b>Servo circuit</b>	
<b>Equipment and swing</b>	With electro-hydraulic pilot control and proportional joystick levers
<b>Chassis</b>	Electro-proportional via foot pedal
<b>Additional functions</b>	Via switch or electro-proportional foot pedals
<b>Proportional control</b>	Proportionally acting transmitters on the joysticks for additional hydraulic functions



## Hydraulic system

<b>Hydraulic pump</b>	Liebherr axial piston variable displacement pump
<b>For equipment and travel drive</b>	
<b>Max. flow</b>	250 l/min.
<b>Max. pressure</b>	350 bar / PowerLift 375 bar
<b>Hydraulic pump regulation and control</b>	Liebherr-Synchron-Comfort-system (LSC) with electronic engine speed sensing regulation, pressure and flow compensation, torque controlled swing drive priority
<b>Hydraulic tank</b>	135 l
<b>Hydraulic system</b>	max. 300 l
<b>Filtration</b>	1 main return filter with integrated partial micro filtration (10 µm)
<b>MODE selection</b>	Adjustment of engine and hydraulic performance via a mode pre-selector to match application, e.g. for especially economical and environmentally friendly operation or for maximum digging performance and heavy-duty jobs
<b>S (Sensitive)</b>	Mode for precision work and lifting through very sensitive movements
<b>E (Eco)</b>	Mode for especially economical and environmentally friendly operation
<b>P (Power)</b>	Mode for high performance with low fuel consumption
<b>P+ (Power-Plus)</b>	Mode for highest performance and for very heavy duty applications, suitable for continuous operation
<b>Engine speed and performance setting</b>	Stepless alignment of engine output and hydraulic power via engine speed
<b>Option</b>	Tool Control: 20 pre-adjustable pump flows and pressures for add-on attachments



## Swing drive

<b>Drive</b>	Liebherr axial piston motor with integrated brake valve and torque control, Liebherr planetary reduction gear
<b>Swing ring</b>	Liebherr, sealed race ball bearing swing ring, internal teeth
<b>Swing speed</b>	0-10.0 RPM stepless
<b>Swing torque</b>	54 kNm
<b>Holding brake</b>	Wet multi-disc (spring applied, pressure released)
<b>Option</b>	Positioning swing brake automatic and manual Positioning swing brake automatic


**Cab**

<b>Cab</b>	ROPS safety cab structure (roll-over protection system) with individual windscreens or featuring a slide-in subpart under the ceiling, headlights integrated in the ceiling, a door with a sliding window, large stowing and depositing possibilities, shock-absorbing suspension, sound damping insulating, laminated safety glass, separate window shades for the sunroof window and windscreen
<b>Operator's seat Comfort</b>	Air cushioned operator's seat with 3D-adjustable armrests, headrest, lap belt, seat heater (2-stage), adjustable seat cushion inclination and length, lockable horizontal suspension, automatic weight adjustment, pneumatic low frequency suspension, adjustable suspension stiffness, pneumatic lumbar vertebrae support and passive seat climatisation with active coal
<b>Operator's seat Premium (Option)</b>	In addition to operator's seat Comfort: active electronic weight adjustment (automatic readjustment) and active seat climatisation with active coal and ventilator
<b>Arm consoles</b>	Joysticks with control consoles attached to the seat, folding left control console
<b>Operation and displays</b>	Large high-resolution operating unit, intuitive, colour display with touchscreen, haptic feedback, video-compatible, numerous setting, control and monitoring options, e.g. air conditioning control, fuel consumption, machine and attachment parameters
<b>Air-conditioning</b>	Automatic air-conditioning, recirculated air function, fast de-icing and demisting at the press of a button, air vents can be operated via a menu; recirculated air and fresh air filters can be easily replaced and are accessible from the outside; heating-cooling unit, designed for extreme outside temperatures, sensors for solar radiation, inside and outside temperatures (country-dependent)
<b>Refrigerant</b>	R134a
<b>Global warming potential</b>	1,430
<b>Quantity at 25 °C</b>	1,300 g
<b>CO<sub>2</sub> equivalent</b>	1.859 t
<b>Vibration emission*</b>	
<b>Hand / arm vibrations</b>	< 2.5 m/s <sup>2</sup>
<b>Whole-body vibrations</b>	< 0.5 m/s <sup>2</sup>
<b>Measuring inaccuracy</b>	According with standard EN 12096:1997


**Undercarriage**

<b>Drive</b>	Oversized two speed power shift transmission with additional creeper speed, Liebherr axial piston motor with functional brake valve on both sides
<b>Pulling force</b>	95 kN
<b>Travel speed</b>	0- 3.5 km/h stepless (creeper speed off-road) 0- 7.0 km/h stepless (off-road) 0-13.0 km/h stepless (creeper speed on-road) 0-20.0 km/h stepless (road travel) 0-max. 30.0 or 37.0 km/h Speeder (option)
<b>Driving operation</b>	Automotive driving using accelerator pedal, cruise control function: storage of variable accelerator pedal positions, both off-road and on-road
<b>Axles</b>	Manual or automatic hydraulically controlled front axle oscillation lock
<b>Service brake</b>	Two circuit travel brake system with accumulator, wet and backlash-free disc brake
<b>Automatic digging brake</b>	Works automatically when driving off (accelerator pedal actuation) and when the machine is stationary (engagement); the digging brake engages automatically - can be coupled with automatic swing axle lock
<b>Holding brake</b>	Wet multi-disc (spring applied, pressure released)
<b>Stabilization</b>	Rear stabilizer blade (adjustable during travel for dozing) Rear outriggers + front stabilizer blade
<b>Option</b>	EW undercarriage 2.75 m / 9'


**Equipment**

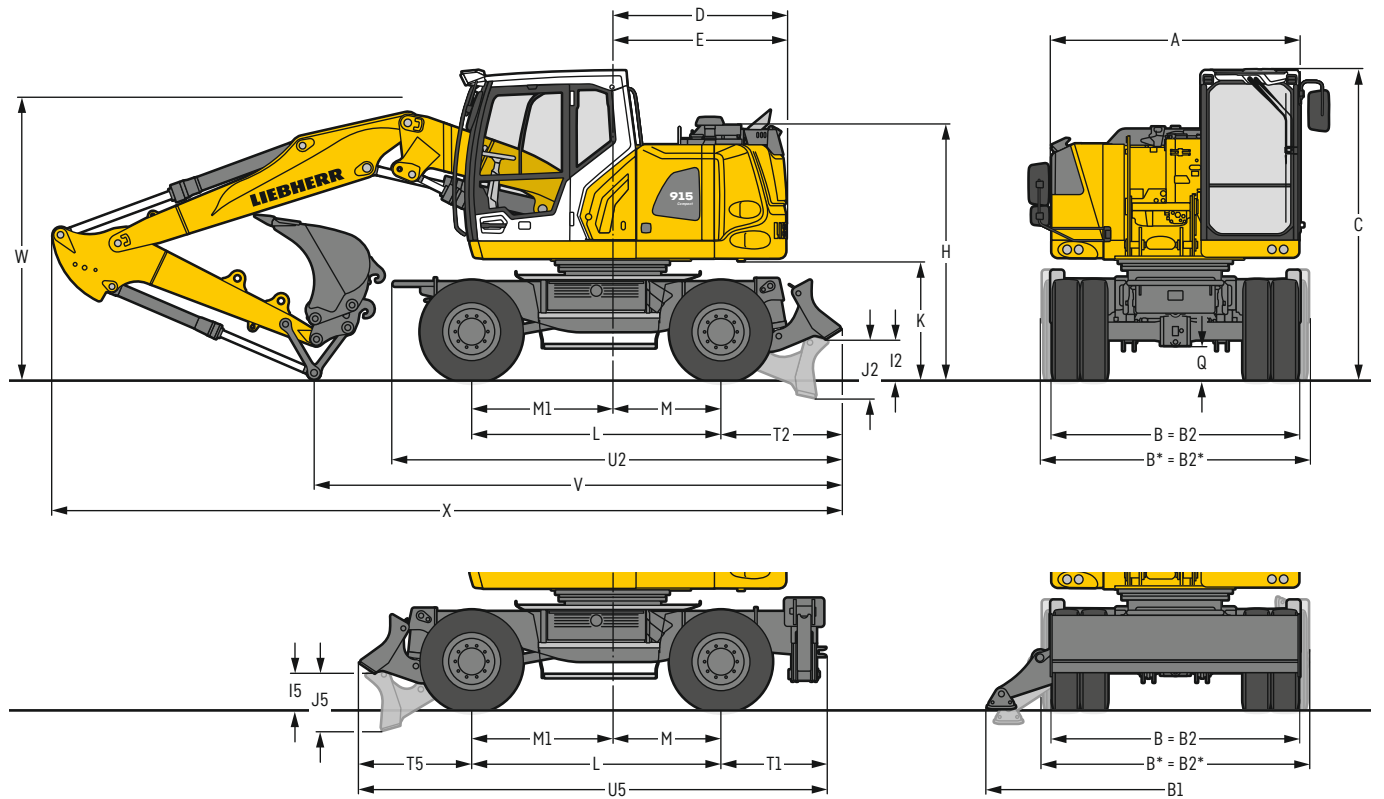
<b>Type</b>	High-strength steel plates at highly-stressed points for the toughest requirements. Complex and stable mountings of equipment and cylinders
<b>Hydraulic cylinders</b>	Liebherr cylinders with special sealing and guide system and, depending on cylinder type, shock absorption
<b>Bearings</b>	Sealed, low maintenance


**Complete machine**

<b>Lubrication</b>	Liebherr central lubrication system for uppercarriage and equipment, automatically
<b>Noise emission</b>	
ISO 6396	71 dB(A) = L <sub>PA</sub> (inside cab)
2000/14/EC	100 dB(A) = L <sub>WA</sub> (surround noise)

\* for risk assessment according to 2002/44/EC see ISO/TR 25398:2006

# Dimensions



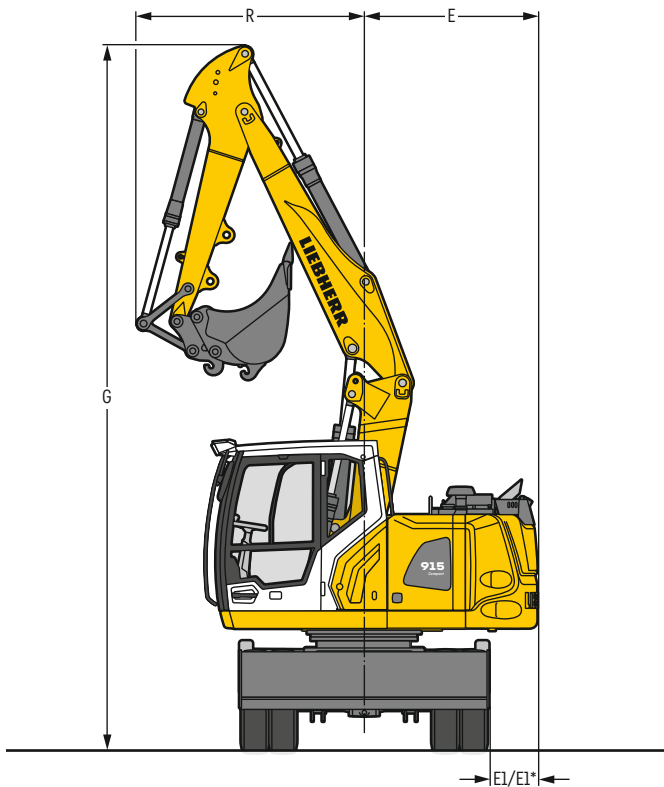
	mm
A	2,525
B	2,540
B*	2,710
B1	3,695
B2	2,540
B2*	2,750
C	3,160
D	1,770
E	1,770
H	2,600
I2	410
I5	370
J2	605
J5	580
K	1,205
L	2,540
M	1,100
M1	1,440
Q	340
T1	1,047
T2	1,230
T5	1,155
U2	4,575
U5	4,765

\* EW undercarriage  
E = Tail radius  
Tyres 290/90-20

	Stick m	Two-piece boom 4.85 m	
		Rear blade mm	Rear outriggers + front blade mm
V	2.05	5,750	5,600
	2.25	5,400	5,250
	2.45	5,050	5,350*
W	2.05	2,950	2,950
	2.25	2,900	2,900
	2.45	2,850	2,850*
X	2.05	8,100	7,900
	2.25	8,050	7,900
	2.45	8,050	8,350*

	Stick m	Offset two-piece boom 4.90 m	
		Rear blade mm	Rear outriggers + front blade mm
V	2.05	6,300	6,150
	2.25	5,750	5,550
	2.45	5,400	5,650*
W	2.05	3,200	3,200
	2.25	3,150	3,100
	2.45	3,100	3,100*
X	2.05	8,100	7,950
	2.25	8,100	7,950
	2.45	8,150	8,400*

Dimensions are with equipment over steering axle  
\* Equipment over digging axle for shorter transport dimensions  
W = Max. ground clearance including approx. 150mm piping

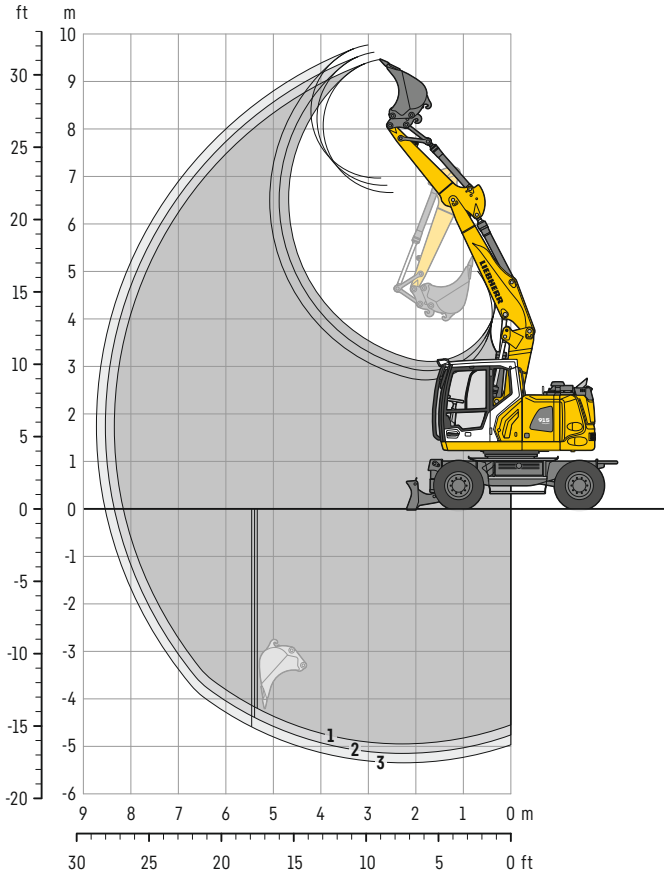


Boom	Stick m	G mm	R mm	E mm	EI / E1* mm
Two-piece boom 4.85 m	2.05	7,190	2,140	1,770	500 / 395*
Two-piece boom 4.85 m	2.25	7,180	2,165	1,770	500 / 395*
Two-piece boom 4.85 m	2.45	7,190	2,235	1,770	500 / 395*

\* EW undercarriage

# Backhoe bucket

with two-piece boom 4.85 m



## Digging envelope

with quick coupler	1	2	3	
Stick length	m	2.05	2.25	2.45
Max. digging depth	m	4.95	5.15	5.35
Max. reach at ground level	m	8.15	8.35	8.55
Max. dumping height	m	6.65	6.80	6.95
Max. teeth height	m	9.45	9.60	9.75
Min. equipment radius	m	2.12	2.17	2.22

## Digging forces

without quick coupler with PowerLift function	1	2	3	
Max. digging force (ISO 6015)	kN	80.1	74.7	70.0
	t	8.2	7.6	7.1
Max. breakout force (ISO 6015)	kN	92.4	92.4	92.4
	t	9.4	9.4	9.4

Max. breakout force with ripper bucket

134.6 kN (13.7t)

## Operating weight

The operating weight includes the basic machine with 8 tyres, two-piece boom 4.85 m, stick 2.25 m, quick coupler SWA 33 and backhoe bucket 850 mm / 0.50 m<sup>3</sup>.

Undercarriage versions	Weight (kg)
A 915 Compact Litronic with rear blade	15,400
A 915 Compact Litronic with rear outriggers + front blade	16,600
A 915 Compact EW Litronic with rear blade	15,700
A 915 Compact EW Litronic with rear outriggers + front blade	16,700

## Backhoe bucket Machine stability per ISO 10567\* (75% of tipping capacity)

Cutting width mm	Capacity ISO 7451 <sup>1)</sup> m <sup>3</sup>	Weight kg	Stabilizers raised			Rear blade down			Rear outriggers + front blade down			EW Stabilizers raised			EW Rear blade down			EW Rear outriggers + front blade down		
			Stick length (m)			Stick length (m)			Stick length (m)			Stick length (m)			Stick length (m)			Stick length (m)		
			2.05	2.25	2.45	2.05	2.25	2.45	2.05	2.25	2.45	2.05	2.25	2.45	2.05	2.25	2.45	2.05	2.25	2.45
300 <sup>2)</sup>	0.17	210	■	■	■	■	■	■	■	■	■	■	■	■	■	■	■	■	■	
400 <sup>2)</sup>	0.24	240	■	■	■	■	■	■	■	■	■	■	■	■	■	■	■	■	■	
500 <sup>2)</sup>	0.28	240	■	■	■	■	■	■	■	■	■	■	■	■	■	■	■	■	■	
550 <sup>2)</sup>	0.29	250	■	■	■	■	■	■	■	■	■	■	■	■	■	■	■	■	■	
650 <sup>2)</sup>	0.36	270	■	■	■	■	■	■	■	■	■	■	■	■	■	■	■	■	■	
850 <sup>2)</sup>	0.50	320	■	■	■	■	■	■	■	■	■	■	■	■	■	■	■	■	■	
1,050 <sup>2)</sup>	0.65	365	■	■	■	■	■	■	■	■	■	■	■	■	■	■	■	■	■	
1,250 <sup>2)</sup>	0.80	415	■	■	△	■	■	■	■	■	■	■	■	■	■	■	■	■	■	
300 <sup>3)</sup>	0.18	200	■	■	■	■	■	■	■	■	■	■	■	■	■	■	■	■	■	
400 <sup>3)</sup>	0.26	230	■	■	■	■	■	■	■	■	■	■	■	■	■	■	■	■	■	
500 <sup>3)</sup>	0.30	230	■	■	■	■	■	■	■	■	■	■	■	■	■	■	■	■	■	
550 <sup>3)</sup>	0.31	235	■	■	■	■	■	■	■	■	■	■	■	■	■	■	■	■	■	
650 <sup>3)</sup>	0.39	260	■	■	■	■	■	■	■	■	■	■	■	■	■	■	■	■	■	
850 <sup>3)</sup>	0.53	305	■	■	■	■	■	■	■	■	■	■	■	■	■	■	■	■	■	
1,050 <sup>3)</sup>	0.71	355	■	■	■	■	■	■	■	■	■	■	■	■	■	■	■	■	■	
1,250 <sup>3)</sup>	0.87	400	■	△	△	■	■	■	■	■	■	■	■	■	■	■	■	■	■	

\* indicated loads are based on ISO 10567 and do not exceed 75% of tipping or 87% of hydraulic capacity, max. stick length without quick coupler, lifted 360° on firm with blocked oscillating axle

<sup>1)</sup> comparable with SAE (heaped)

<sup>2)</sup> backhoe bucket with teeth <sup>3)</sup> backhoe bucket with cutting edge

Backhoe buckets up to 500 mm cutting width with limited digging depth

Max. material weight ■ = ≤ 1.8t/m<sup>3</sup>, ■ = ≤ 1.5t/m<sup>3</sup>, △ = ≤ 1.2t/m<sup>3</sup>, — = not authorised

# Lift capacities

with two-piece boom 4.85 m

## Stick 2.05 m

m	Undercarriage stabilized		3.0 m		4.5 m		6.0 m		m	
	rear	front								
7.5	-	-							2.6*	2.6*
	Blade	-							2.6*	2.6*
	Outriggers	Blade							2.6*	2.6*
6.0	-	-			3.6	4.4*			2.3*	2.3*
	Blade	-			4.0	4.4*			2.3*	2.3*
	Outriggers	Blade			4.4*	4.4*			2.3*	2.3*
4.5	-	-	6.4*	6.4*	3.6	5.4*	2.2	3.6	1.8	2.2*
	Blade	-	6.4*	6.4*	4.0	5.4*	2.5	4.0*	2.1	2.2*
	Outriggers	Blade	6.4*	6.4*	5.4*	5.4*	3.9	4.0*	2.2*	2.2*
3.0	-	-	6.4	9.5*	3.5	5.6	2.2	3.6	1.6	2.3*
	Blade	-	7.1	9.5*	3.9	6.2*	2.4	4.8*	1.8	2.3*
	Outriggers	Blade	9.5*	9.5*	5.9	6.2*	3.9	4.8*	2.3*	2.3*
1.5	-	-	6.2	10.4*	3.5	5.6	2.1	3.5	1.5	2.5*
	Blade	-	6.9	10.4*	3.9	6.9*	2.3	5.1*	1.7	2.5*
	Outriggers	Blade	10.4*	10.4*	5.9	6.9*	3.8	5.1*	2.5*	2.5*
0	-	-	6.0	10.6	3.3	5.6	2.0	3.4	1.5	2.7
	Blade	-	6.8	10.9*	3.7	7.0*	2.2	5.1*	1.7	3.0*
	Outriggers	Blade	10.9*	10.9*	6.0	7.0*	3.6	5.1*	2.9	3.0*
-1.5	-	-	5.6	10.9	3.0	5.3	1.8	3.3	1.7	3.0
	Blade	-	6.4	11.1*	3.3	7.1*	2.1	4.5*	1.9	3.9*
	Outriggers	Blade	11.1*	11.1*	5.6	7.1*	3.5	4.5*	3.3	3.9*
-3.0	-	-	5.3	10.0*	2.8	5.1			2.3	3.4*
	Blade	-	6.1	10.0*	3.2	5.3*			2.6	3.4*
	Outriggers	Blade	10.0*	10.0*	5.3*	5.3*			3.4*	3.4*

## Stick 2.25 m

m	Undercarriage stabilized		3.0 m		4.5 m		6.0 m		m	
	rear	front								
7.5	-	-							2.4*	2.4*
	Blade	-							2.4*	2.4*
	Outriggers	Blade							2.4*	2.4*
6.0	-	-			3.7	4.2*			2.1*	2.1*
	Blade	-			4.0	4.2*			2.1*	2.1*
	Outriggers	Blade			4.2*	4.2*			2.1*	2.1*
4.5	-	-	5.5*	5.5*	3.6	5.2*	2.2	3.7	1.8	2.0*
	Blade	-	5.5*	5.5*	4.0	5.2*	2.5	4.0*	2.0	2.0*
	Outriggers	Blade	5.5*	5.5*	5.2*	5.2*	3.9	4.0*	2.0*	2.0*
3.0	-	-	6.4	9.1*	3.5	5.6	2.2	3.6	1.5	2.1*
	Blade	-	7.1	9.1*	3.9	6.1*	2.5	4.8*	1.7	2.1*
	Outriggers	Blade	9.1*	9.1*	5.9	6.1*	3.9	4.8*	2.1*	2.1*
1.5	-	-	6.2	10.3*	3.5	5.5	2.1	3.5	1.4	2.3*
	Blade	-	6.9	10.3*	3.9	6.8*	2.4	5.0*	1.6	2.3*
	Outriggers	Blade	10.3*	10.3*	5.9	6.8*	3.8	5.0*	2.3*	2.3*
0	-	-	6.0	10.5	3.3	5.6	2.0	3.4	1.5	2.6
	Blade	-	6.8	10.9*	3.7	6.9*	2.2	5.1*	1.6	2.7*
	Outriggers	Blade	10.9*	10.9*	5.9	6.9*	3.7	5.1*	2.7*	2.7*
-1.5	-	-	5.6	10.8	3.0	5.3	1.9	3.3	1.6	2.9
	Blade	-	6.4	11.0*	3.4	7.1*	2.1	4.7*	1.8	3.5*
	Outriggers	Blade	11.0*	11.0*	5.7	7.1*	3.5	4.7*	3.1	3.5*
-3.0	-	-	5.3	10.5*	2.8	5.1			2.1	3.4*
	Blade	-	6.1	10.5*	3.2	5.8*			2.4	3.4*
	Outriggers	Blade	10.5*	10.5*	5.5	5.8*			3.4*	3.4*

## Stick 2.45 m

m	Undercarriage stabilized		3.0 m		4.5 m		6.0 m		m	
	rear	front								
7.5	-	-			2.6*	2.6*			2.2*	2.2*
	Blade	-			2.6*	2.6*			2.2*	2.2*
	Outriggers	Blade			2.6*	2.6*			2.2*	2.2*
6.0	-	-			3.7	3.9*	2.2	2.3*	1.9*	1.9*
	Blade	-			3.9*	3.9*	2.3*	2.3*	1.9*	1.9*
	Outriggers	Blade			3.9*	3.9*	2.3*	2.3*	1.9*	1.9*
4.5	-	-			3.6	4.8*	2.3	3.7	1.7	1.9*
	Blade	-			4.0	4.8*	2.5	3.9*	1.9*	1.9*
	Outriggers	Blade			4.8*	4.8*	3.9*	3.9*	1.9*	1.9*
3.0	-	-	6.4	8.7*	3.5	5.6	2.2	3.6	1.4	1.9*
	Blade	-	7.1	8.7*	3.9	5.9*	2.5	4.7*	1.6	1.9*
	Outriggers	Blade	8.7*	8.7*	5.9*	5.9*	3.9	4.7*	1.9*	1.9*
1.5	-	-	6.2	10.3*	3.5	5.5	2.1	3.6	1.4	2.1*
	Blade	-	6.9	10.3*	3.9	6.7*	2.4	5.0*	1.5	2.1*
	Outriggers	Blade	10.3*	10.3*	5.8	6.7*	3.8	5.0*	2.1*	2.1*
0	-	-	6.1	10.4	3.3	5.6	2.0	3.4	1.4	2.4*
	Blade	-	6.9	10.8*	3.7	6.9*	2.2	5.0*	1.6	2.4*
	Outriggers	Blade	10.8*	10.8*	5.9	6.9*	3.7	5.0*	2.4*	2.4*
-1.5	-	-	5.6	10.7	3.0	5.3	1.8	3.3	1.5	2.7
	Blade	-	6.4	10.9*	3.4	7.0*	2.1	4.9*	1.7	3.0*
	Outriggers	Blade	10.9*	10.9*	5.7	7.0*	3.5	4.9*	2.9	3.0*
-3.0	-	-	5.3	10.6	2.8	5.1			1.9	3.3*
	Blade	-	6.1	10.9*	3.2	6.2*			2.2	3.3*
	Outriggers	Blade	10.9*	10.9*	5.5	6.2*			3.3*	3.3*

Height Can be slewed through 360° In longitudinal position of undercarriage Max. reach \* Limited by hydr. capacity

The lift capacities with PowerLift function on the load hook of the Liebherr quick coupler SWA 33 without attachment are stated in metric tons (t) and are valid on a firm, level supporting surface with blocked oscillating axle. These capacities can be slewed through 360° with the undercarriage in the transverse position. Capacities in the longitudinal position of the undercarriage (±15°) are specified over the steering axle with the stabilizers raised and over the rigid axle with the stabilizers down. The values apply when the adjusting cylinder is in the optimal position. Indicated loads based on the ISO 10567 standard and do not exceed 75% of tipping or 87% of hydraulic capacity, or are limited by the permissible load of the load hook on the quick coupler (max. 5 t). Without the quick coupler, lift capacities will increase by up to 110 kg.

In accordance with the harmonised European Standard EN 474-5, hydraulic excavators used for lifting operations must be equipped with pipe fracture safety valves, an overload warning device, a load hook and a lift capacity chart.

# Lift capacities

with two-piece boom 4.85 m, EW undercarriage

## Stick 2.05 m

m	Undercarriage stabilized		3.0 m		4.5 m		6.0 m		m	
	rear	front								
7.5	-	-					2.6*	2.6*	4.0	
	Blade	-					2.6*	2.6*		
	Outriggers	Blade					2.6*	2.6*		
6.0	-	-			4.0	4.4*	2.3*	2.3*	5.7	
	Blade	-			4.4*	4.4*	2.3*	2.3*		
	Outriggers	Blade			4.4*	4.4*	2.3*	2.3*		
4.5	-	-	6.4*	6.4*	4.0	5.4*	2.5	3.7	6.5	
	Blade	-	6.4*	6.4*	4.4	5.4*	2.8	4.0*		
	Outriggers	Blade	6.4*	6.4*	5.4*	5.4*	4.0*	4.0*		
3.0	-	-	7.1	9.5*	4.0	5.7	2.5	3.7	7.0	
	Blade	-	7.9	9.5*	4.4	6.2*	2.7	4.8*		
	Outriggers	Blade	9.5*	9.5*	6.2	6.2*	4.0	4.8*		
1.5	-	-	7.0	10.4*	3.9	5.6	2.4	3.6	7.1	
	Blade	-	7.8	10.4*	4.3	6.9*	2.6	5.1*		
	Outriggers	Blade	10.4*	10.4*	6.1	6.9*	4.0	5.1*		
0	-	-	6.8	10.7	3.7	5.7	2.2	3.5	6.9	
	Blade	-	7.8	10.9*	4.1	7.0*	2.5	5.1*		
	Outriggers	Blade	10.9*	10.9*	6.2	7.0*	3.8	5.1*		
-1.5	-	-	6.5	11.0	3.4	5.4	2.1	3.3	6.3	
	Blade	-	7.4	11.1*	3.8	7.1*	2.4	4.5*		
	Outriggers	Blade	11.1*	11.1*	6.0	7.1*	3.7	4.5*		
-3.0	-	-	6.2	10.0*	3.2	5.2	2.6	3.4*	5.2	
	Blade	-	7.1	10.0*	3.7	5.3*	3.0	3.4*		
	Outriggers	Blade	10.0*	10.0*	5.3*	5.3*	3.4*	3.4*		

## Stick 2.25 m

m	Undercarriage stabilized		3.0 m		4.5 m		6.0 m		m	
	rear	front								
7.5	-	-					2.4*	2.4*	4.4	
	Blade	-					2.4*	2.4*		
	Outriggers	Blade					2.4*	2.4*		
6.0	-	-			4.1	4.2*	2.1*	2.1*	5.9	
	Blade	-			4.2*	4.2*	2.1*	2.1*		
	Outriggers	Blade			4.2*	4.2*	2.1*	2.1*		
4.5	-	-	5.5*	5.5*	4.0	5.2*	2.5	3.7	6.8	
	Blade	-	5.5*	5.5*	4.4	5.2*	2.8	4.0*		
	Outriggers	Blade	5.5*	5.5*	5.2*	5.2*	4.0*	4.0*		
3.0	-	-	7.1	9.1*	4.0	5.7	2.5	3.7	7.2	
	Blade	-	7.9	9.1*	4.4	6.1*	2.8	4.8*		
	Outriggers	Blade	9.1*	9.1*	6.1*	6.1*	4.1	4.8*		
1.5	-	-	7.0	10.3*	3.9	5.6	2.4	3.6	7.3	
	Blade	-	7.8	10.3*	4.3	6.8*	2.7	5.0*		
	Outriggers	Blade	10.3*	10.3*	6.1	6.8*	4.0	5.0*		
0	-	-	6.9	10.6	3.7	5.7	2.2	3.5	7.1	
	Blade	-	7.8	10.9*	4.2	6.9*	2.5	5.1*		
	Outriggers	Blade	10.9*	10.9*	6.2	6.9*	3.9	5.1*		
-1.5	-	-	6.5	10.9	3.4	5.4	2.1	3.3	6.5	
	Blade	-	7.4	11.0*	3.9	7.1*	2.4	4.7*		
	Outriggers	Blade	11.0*	11.0*	6.0	7.1*	3.7	4.7*		
-3.0	-	-	6.2	10.5*	3.2	5.2	2.4	3.4*	5.5	
	Blade	-	7.1	10.5*	3.7	5.8*	2.7	3.4*		
	Outriggers	Blade	10.5*	10.5*	5.8	5.8*	3.4*	3.4*		

## Stick 2.45 m

m	Undercarriage stabilized		3.0 m		4.5 m		6.0 m		m	
	rear	front								
7.5	-	-			2.6*	2.6*	2.2*	2.2*	4.7	
	Blade	-			2.6*	2.6*	2.2*	2.2*		
	Outriggers	Blade			2.6*	2.6*	2.2*	2.2*		
6.0	-	-			3.9*	3.9*	2.3*	2.3*	6.1	
	Blade	-			3.9*	3.9*	2.3*	2.3*		
	Outriggers	Blade			3.9*	3.9*	2.3*	2.3*		
4.5	-	-			4.0	4.8*	2.5	3.7	7.0	
	Blade	-			4.4	4.8*	2.8	3.9*		
	Outriggers	Blade			4.8*	4.8*	3.9*	3.9*		
3.0	-	-	7.1	8.7*	3.9	5.7	2.5	3.7	7.4	
	Blade	-	7.9	8.7*	4.3	5.9*	2.8	4.7*		
	Outriggers	Blade	8.7*	8.7*	5.9*	5.9*	4.1	4.7*		
1.5	-	-	6.9	10.3*	3.9	5.6	2.4	3.6	7.5	
	Blade	-	7.7	10.3*	4.3	6.7*	2.7	5.0*		
	Outriggers	Blade	10.3*	10.3*	6.1	6.7*	4.0	5.0*		
0	-	-	6.9	10.6	3.7	5.6	2.3	3.5	7.3	
	Blade	-	7.8	10.8*	4.2	6.9*	2.5	5.0*		
	Outriggers	Blade	10.8*	10.8*	6.1	6.9*	3.9	5.0*		
-1.5	-	-	6.5	10.8	3.4	5.4	2.1	3.3	6.7	
	Blade	-	7.4	10.9*	3.9	7.0*	2.4	4.9*		
	Outriggers	Blade	10.9*	10.9*	6.0	7.0*	3.7	4.9*		
-3.0	-	-	6.2	10.8	3.2	5.2	2.2	3.3*	5.7	
	Blade	-	7.1	10.9*	3.6	6.2*	2.5	3.3*		
	Outriggers	Blade	10.9*	10.9*	5.8	6.2*	3.3*	3.3*		

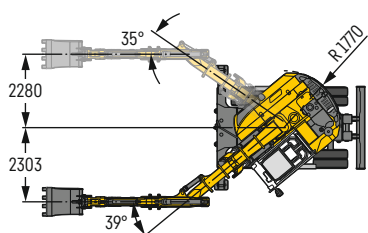
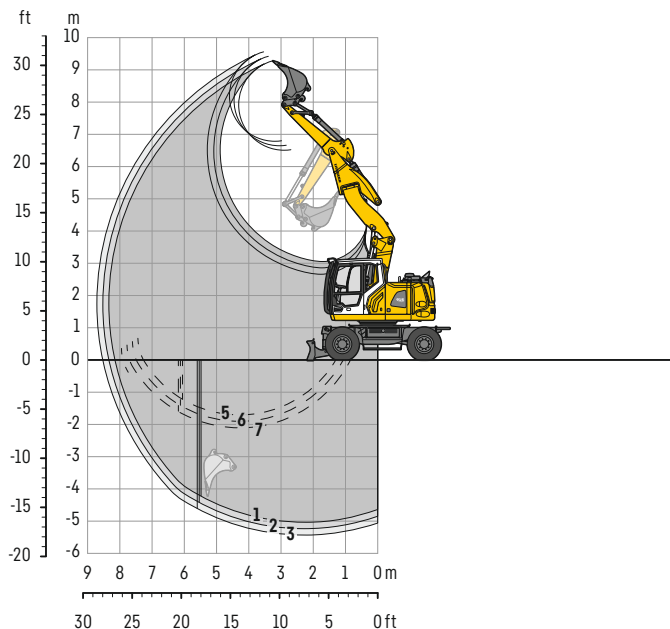
Height Can be slewed through 360° In longitudinal position of undercarriage Max. reach \* Limited by hydr. capacity

The lift capacities with PowerLift function on the load hook of the Liebherr quick coupler SWA 33 without attachment are stated in metric tons (t) and are valid on a firm, level supporting surface with blocked oscillating axle. These capacities can be slewed through 360° with the undercarriage in the transverse position. Capacities in the longitudinal position of the undercarriage (±15°) are specified over the steering axle with the stabilizers raised and over the rigid axle with the stabilizers down. The values apply when the adjusting cylinder is in the optimal position. Indicated loads based on the ISO 10567 standard and do not exceed 75% of tipping or 87% of hydraulic capacity, or are limited by the permissible load of the load hook on the quick coupler (max. 5 t). Without the quick coupler, lift capacities will increase by up to 110 kg.

In accordance with the harmonised European Standard EN 474-5, hydraulic excavators used for lifting operations must be equipped with pipe fracture safety valves, an overload warning device, a load hook and a lift capacity chart.

# Backhoe bucket

with offset two-piece boom 4.90 m



## Digging envelope

with quick coupler	1	2	3	
Stick length	m	2.05	2.25	2.45
Max. digging depth	m	5.05	5.25	5.45
Max. reach at ground level	m	8.15	8.35	8.55
Max. dumping height	m	6.50	6.65	6.80
Max. teeth height	m	9.25	9.40	9.55
Min. equipment radius	m	2.12	2.15	2.18

1 with stick 2.05 m  
2 with stick 2.25 m  
3 with stick 2.45 m  
with set straight boom

4 with stick 2.05 m  
5 with stick 2.25 m  
6 with stick 2.45 m  
at max. equipment offset with vertical ditch walls

## Digging forces

without quick coupler with PowerLift function	1	2	3	
Max. digging force (ISO 6015)	kN	80.1	74.7	70.0
	t	8.2	7.6	7.1
Max. breakout force (ISO 6015)	kN	92.4	92.4	92.4
	t	9.4	9.4	9.4

Max. breakout force with ripper bucket 134.6 kN (13.7t)

## Operating weight

The operating weight includes the basic machine with 8 tyres, offset two-piece boom 4.90 m, stick 2.25 m, quick coupler SWA 33 and backhoe bucket 850 mm / 0.50 m<sup>3</sup>.

Undercarriage versions	Weight (kg)
A 915 Compact Litronic with rear blade	15,900
A 915 Compact Litronic with rear outriggers + front blade	17,100
A 915 Compact EW Litronic with rear blade	16,100
A 915 Compact EW Litronic with rear outriggers + front blade	17,200

## Backhoe bucket Machine stability per ISO 10567\* (75% of tipping capacity)

Cutting width mm	Capacity ISO 7461 <sup>1)</sup> m <sup>3</sup>	Weight kg	Stabilizers raised			Rear blade down			Rear outriggers + front blade down			EW Stabilizers raised			EW Rear blade down			EW Rear outriggers + front blade down		
			Stick length (m)			Stick length (m)			Stick length (m)			Stick length (m)			Stick length (m)			Stick length (m)		
			2.05	2.25	2.45	2.05	2.25	2.45	2.05	2.25	2.45	2.05	2.25	2.45	2.05	2.25	2.45	2.05	2.25	2.45
300 <sup>2)</sup>	0.17	210	■	■	■	■	■	■	■	■	■	■	■	■	■	■	■	■	■	
400 <sup>2)</sup>	0.24	240	■	■	■	■	■	■	■	■	■	■	■	■	■	■	■	■	■	
500 <sup>2)</sup>	0.28	240	■	■	■	■	■	■	■	■	■	■	■	■	■	■	■	■	■	
550 <sup>2)</sup>	0.29	250	■	■	■	■	■	■	■	■	■	■	■	■	■	■	■	■	■	
650 <sup>2)</sup>	0.36	270	■	■	■	■	■	■	■	■	■	■	■	■	■	■	■	■	■	
850 <sup>2)</sup>	0.50	320	■	■	■	■	■	■	■	■	■	■	■	■	■	■	■	■	■	
1,050 <sup>2)</sup>	0.65	365	■	■	■	■	■	■	■	■	■	■	■	■	■	■	■	■	■	
1,250 <sup>2)</sup>	0.80	415	△	△	△	■	■	■	■	■	■	■	■	■	■	■	■	■	■	
300 <sup>3)</sup>	0.18	200	■	■	■	■	■	■	■	■	■	■	■	■	■	■	■	■	■	
400 <sup>3)</sup>	0.26	230	■	■	■	■	■	■	■	■	■	■	■	■	■	■	■	■	■	
500 <sup>3)</sup>	0.30	230	■	■	■	■	■	■	■	■	■	■	■	■	■	■	■	■	■	
550 <sup>3)</sup>	0.31	235	■	■	■	■	■	■	■	■	■	■	■	■	■	■	■	■	■	
650 <sup>3)</sup>	0.39	260	■	■	■	■	■	■	■	■	■	■	■	■	■	■	■	■	■	
850 <sup>3)</sup>	0.53	305	■	■	■	■	■	■	■	■	■	■	■	■	■	■	■	■	■	
1,050 <sup>3)</sup>	0.71	355	■	■	■	■	■	■	■	■	■	■	■	■	■	■	■	■	■	
1,250 <sup>3)</sup>	0.87	400	△	△	—	■	■	△	■	■	■	■	■	△	■	■	■	■	■	

\* indicated loads are based on ISO 10567 and do not exceed 75% of tipping or 87% of hydraulic capacity, max. stick length without quick coupler, lifted 360° on firm with blocked oscillating axle

<sup>1)</sup> comparable with SAE (heaped)

<sup>2)</sup> backhoe bucket with teeth <sup>3)</sup> backhoe bucket with cutting edge

Backhoe buckets up to 500 mm cutting width with limited digging depth

Max. material weight ■ = ≤ 1.8t/m<sup>3</sup>, ■ = ≤ 1.5t/m<sup>3</sup>, △ = ≤ 1.2t/m<sup>3</sup>, — = not authorised

# Lift capacities

with offset two-piece boom 4.90 m

## Stick 2.05 m

m	Undercarriage stabilized		3.0 m		4.5 m		6.0 m		m	
	rear	front								
7.5	-	-							2.5*	2.5*
	Blade	-							2.5*	2.5*
	Outriggers	Blade							2.5*	2.5*
6.0	-	-			3.6	4.3*			2.2*	2.2*
	Blade	-			4.0	4.3*			2.2*	2.2*
	Outriggers	Blade			4.3*	4.3*			2.2*	2.2*
4.5	-	-	6.6	6.6*	3.6	5.1*	2.1	3.6	1.8	2.2*
	Blade	-	6.6*	6.6*	4.0	5.1*	2.4	3.8*	2.0	2.2*
	Outriggers	Blade	6.6*	6.6*	5.1*	5.1*	3.8	3.8*	2.2*	2.2*
3.0	-	-	6.2	9.0*	3.5	5.5	2.1	3.5	1.5	2.3*
	Blade	-	6.9	9.0*	3.9	5.9*	2.3	4.6*	1.7	2.3*
	Outriggers	Blade	9.0*	9.0*	5.8	5.9*	3.8	4.6*	2.3*	2.3*
1.5	-	-	6.1	10.0*	3.4	5.4	2.0	3.4	1.4	2.5
	Blade	-	6.8	10.0*	3.8	6.5*	2.2	4.8*	1.6	2.5*
	Outriggers	Blade	10.0*	10.0*	5.7	6.5*	3.7	4.8*	2.5*	2.5*
0	-	-	5.9	10.2	3.2	5.5	1.8	3.3	1.4	2.6
	Blade	-	6.7	10.5*	3.6	6.7*	2.1	4.9*	1.6	3.0*
	Outriggers	Blade	10.5*	10.5*	5.8	6.7*	3.5	4.9*	2.8	3.0*
-1.5	-	-	5.5	10.6	2.8	5.1	1.7	3.1	1.5	2.9
	Blade	-	6.3	10.7*	3.2	6.9*	1.9	4.4*	1.8	3.9*
	Outriggers	Blade	10.7*	10.7*	5.5	6.9*	3.4	4.4*	3.1	3.9*
-3.0	-	-	5.0	9.9*	2.6	4.9			2.1	3.5*
	Blade	-	5.8	9.9*	3.0	5.2*			2.4	3.5*
	Outriggers	Blade	9.9*	9.9*	5.2*	5.2*			3.5*	3.5*

## Stick 2.25 m

m	Undercarriage stabilized		3.0 m		4.5 m		6.0 m		m	
	rear	front								
7.5	-	-							2.3*	2.3*
	Blade	-							2.3*	2.3*
	Outriggers	Blade							2.3*	2.3*
6.0	-	-			3.7	4.1*			2.0*	2.0*
	Blade	-			4.0	4.1*			2.0*	2.0*
	Outriggers	Blade			4.1*	4.1*			2.0*	2.0*
4.5	-	-			3.6	4.9*	2.2	3.6	1.7	2.0*
	Blade	-			4.0	4.9*	2.4	3.9*	1.9	2.0*
	Outriggers	Blade			4.9*	4.9*	3.8	3.9*	2.0*	2.0*
3.0	-	-	6.3*	8.7*	3.5	5.5	2.1	3.6	1.4	2.1*
	Blade	-	6.9	8.7*	3.9	5.7*	2.4	4.5*	1.6	2.1*
	Outriggers	Blade	8.7*	8.7*	5.7*	5.7*	3.8	4.5*	2.1*	2.1*
1.5	-	-	6.1	9.9*	3.4	5.4	2.0	3.5	1.3	2.3*
	Blade	-	6.8	9.9*	3.8	6.4*	2.3	4.8*	1.5	2.3*
	Outriggers	Blade	9.9*	9.9*	5.7	6.4*	3.7	4.8*	2.3*	2.3*
0	-	-	6.0	10.1	3.2	5.5	1.8	3.3	1.3	2.5
	Blade	-	6.8	10.4*	3.6	6.6*	2.1	4.9*	1.5	2.7*
	Outriggers	Blade	10.4*	10.4*	5.8	6.6*	3.5	4.9*	2.7	2.7*
-1.5	-	-	5.5	10.5	2.8	5.2	1.7	3.1	1.5	2.7
	Blade	-	6.3	10.6*	3.2	6.8*	1.9	4.6*	1.7	3.6*
	Outriggers	Blade	10.6*	10.6*	5.6	6.8*	3.4	4.6*	3.0	3.6*
-3.0	-	-	5.1	10.3	2.6	4.9			1.9	3.5*
	Blade	-	5.8	10.3*	3.0	5.7*			2.2	3.5*
	Outriggers	Blade	10.3*	10.3*	5.3	5.7*			3.5*	3.5*

## Stick 2.45 m

m	Undercarriage stabilized		3.0 m		4.5 m		6.0 m		m	
	rear	front								
7.5	-	-			2.4*	2.4*			2.1*	2.1*
	Blade	-			2.4*	2.4*			2.1*	2.1*
	Outriggers	Blade			2.4*	2.4*			2.1*	2.1*
6.0	-	-			3.7	3.9*	2.1*	2.1*	1.8*	1.8*
	Blade	-			3.9*	3.9*	2.1*	2.1*	1.8*	1.8*
	Outriggers	Blade			3.9*	3.9*	2.1*	2.1*	1.8*	1.8*
4.5	-	-			3.6	4.7*	2.2	3.6	1.6	1.8*
	Blade	-			4.0	4.7*	2.5	3.8*	1.8	1.8*
	Outriggers	Blade			4.7*	4.7*	3.8*	3.8*	1.8*	1.8*
3.0	-	-	6.3	8.3*	3.5	5.5	2.2	3.6	1.3	1.9*
	Blade	-	6.9	8.3*	3.9	5.6*	2.4	4.4*	1.5	1.9*
	Outriggers	Blade	8.3*	8.3*	5.6*	5.6*	3.8	4.4*	1.9*	1.9*
1.5	-	-	6.1	9.8*	3.4	5.4	2.1	3.5	1.2	2.1*
	Blade	-	6.7	9.8*	3.8	6.3*	2.3	4.7*	1.4	2.1*
	Outriggers	Blade	9.8*	9.8*	5.7	6.3*	3.7	4.7*	2.1*	2.1*
0	-	-	6.0	10.1	3.3	5.4	1.9	3.3	1.2	2.3
	Blade	-	6.8	10.3*	3.7	6.6*	2.1	4.8*	1.4	2.4*
	Outriggers	Blade	10.3*	10.3*	5.7	6.6*	3.6	4.8*	2.4*	2.4*
-1.5	-	-	5.5	10.4	2.9	5.2	1.7	3.1	1.4	2.6
	Blade	-	6.3	10.5*	3.3	6.7*	1.9	4.7*	1.6	3.1*
	Outriggers	Blade	10.5*	10.5*	5.6	6.7*	3.4	4.7*	2.8	3.1*
-3.0	-	-	5.1	10.3	2.6	4.9			1.8	3.3
	Blade	-	5.9	10.6*	3.0	6.1*			2.0	3.5*
	Outriggers	Blade	10.6*	10.6*	5.3	6.1*			3.5*	3.5*

Height Can be slewed through 360° In longitudinal position of undercarriage Max. reach \* Limited by hydr. capacity

The lift capacities with PowerLift function on the load hook of the Liebherr quick coupler SWA 33 without attachment are stated in metric tons (t) and are valid on a firm, level supporting surface with blocked oscillating axle. These capacities can be slewed through 360° with the undercarriage in the transverse position. Capacities in the longitudinal position of the undercarriage (±15°) are specified over the steering axle with the stabilizers raised and over the rigid axle with the stabilizers down. The values apply when the adjusting cylinder is in the optimal position. Indicated loads based on the ISO 10567 standard and do not exceed 75% of tipping or 87% of hydraulic capacity, or are limited by the permissible load of the load hook on the quick coupler (max. 5 t). Without the quick coupler, lift capacities will increase by up to 110 kg.

In accordance with the harmonised European Standard EN 474-5, hydraulic excavators used for lifting operations must be equipped with pipe fracture safety valves, an overload warning device, a load hook and a lift capacity chart.

# Lift capacities

with offset two-piece boom 4.90 m, EW undercarriage

## Stick 2.05 m

m	Undercarriage stabilized		3.0 m		4.5 m		6.0 m		m	
	rear	front								
7.5	-	-							2.5*	2.5*
	Blade	-							2.5*	2.5*
	Outriggers	Blade							2.5*	2.5*
6.0	-	-			4.0	4.3*			2.2*	2.2*
	Blade	-			4.3*	4.3*			2.2*	2.2*
	Outriggers	Blade			4.3*	4.3*			2.2*	2.2*
4.5	-	-	6.6*	6.6*	4.0	5.1*	2.4	3.6	2.0	2.2*
	Blade	-	6.6*	6.6*	4.4	5.1*	2.7	3.8*	2.2*	2.2*
	Outriggers	Blade	6.6*	6.6*	5.1*	5.1*	3.8*	3.8*	2.2*	2.2*
3.0	-	-	7.0	9.0*	3.9	5.6	2.4	3.6	1.7	2.3*
	Blade	-	7.7	9.0*	4.3	5.9*	2.7	4.6*	1.9	2.3*
	Outriggers	Blade	9.0*	9.0*	5.9*	5.9*	4.0	4.6*	2.3*	2.3*
1.5	-	-	6.8	10.0*	3.9	5.5	2.3	3.5	1.6	2.5*
	Blade	-	7.6	10.0*	4.2	6.5*	2.5	4.8*	1.8	2.5*
	Outriggers	Blade	10.0*	10.0*	6.0	6.5*	3.9	4.8*	2.5*	2.5*
0	-	-	6.8	10.3	3.6	5.6	2.1	3.3	1.6	2.6
	Blade	-	7.7	10.5*	4.1	6.7*	2.4	4.9*	1.8	3.0*
	Outriggers	Blade	10.5*	10.5*	6.0	6.7*	3.7	4.9*	2.9	3.0*
-1.5	-	-	6.4	10.7	3.2	5.2	1.9	3.2	1.8	3.0
	Blade	-	7.3	10.7*	3.7	6.9*	2.2	4.4*	2.1	3.9*
	Outriggers	Blade	10.7*	10.7*	5.8	6.9*	3.6	4.4*	3.3	3.9*
-3.0	-	-	5.9	9.9*	3.0	5.0			2.4	3.5*
	Blade	-	6.8	9.9*	3.4	5.2*			2.8	3.5*
	Outriggers	Blade	9.9*	9.9*	5.2*	5.2*			3.5*	3.5*

## Stick 2.25 m

m	Undercarriage stabilized		3.0 m		4.5 m		6.0 m		m	
	rear	front								
7.5	-	-							2.3*	2.3*
	Blade	-							2.3*	2.3*
	Outriggers	Blade							2.3*	2.3*
6.0	-	-			4.1	4.1*			2.0*	2.0*
	Blade	-			4.1*	4.1*			2.0*	2.0*
	Outriggers	Blade			4.1*	4.1*			2.0*	2.0*
4.5	-	-			4.0	4.9*	2.4	3.7	1.9	2.0*
	Blade	-			4.4	4.9*	2.7	3.9*	2.0*	2.0*
	Outriggers	Blade			4.9*	4.9*	3.9*	3.9*	2.0*	2.0*
3.0	-	-	7.0	8.7*	3.9	5.6	2.4	3.6	1.6	2.1*
	Blade	-	7.7	8.7*	4.3	5.7*	2.7	4.5*	1.9	2.1*
	Outriggers	Blade	8.7*	8.7*	5.7*	5.7*	4.0	4.5*	2.1*	2.1*
1.5	-	-	6.8	9.9*	3.9	5.5	2.3	3.5	1.5	2.3*
	Blade	-	7.6	9.9*	4.2	6.4*	2.6	4.8*	1.7	2.3*
	Outriggers	Blade	9.9*	9.9*	5.9	6.4*	3.9	4.8*	2.3*	2.3*
0	-	-	6.8	10.2	3.7	5.6	2.1	3.4	1.5	2.5
	Blade	-	7.7	10.4*	4.1	6.6*	2.4	4.9*	1.8	2.7*
	Outriggers	Blade	10.4*	10.4*	6.0	6.6*	3.7	4.9*	2.7*	2.7*
-1.5	-	-	6.4	10.6	3.3	5.3	1.9	3.2	1.7	2.8
	Blade	-	7.3	10.6*	3.7	6.8*	2.2	4.6*	2.0	3.6*
	Outriggers	Blade	10.6*	10.6*	5.9	6.8*	3.6	4.6*	3.2	3.6*
-3.0	-	-	5.9	10.3*	3.0	5.0			2.2	3.5*
	Blade	-	6.8	10.3*	3.4	5.7*			2.6	3.5*
	Outriggers	Blade	10.3*	10.3*	5.6	5.7*			3.5*	3.5*

## Stick 2.45 m

m	Undercarriage stabilized		3.0 m		4.5 m		6.0 m		m	
	rear	front								
7.5	-	-			2.4*	2.4*			2.1*	2.1*
	Blade	-			2.4*	2.4*			2.1*	2.1*
	Outriggers	Blade			2.4*	2.4*			2.1*	2.1*
6.0	-	-			3.9*	3.9*	2.1*	2.1*	1.8*	1.8*
	Blade	-			3.9*	3.9*	2.1*	2.1*	1.8*	1.8*
	Outriggers	Blade			3.9*	3.9*	2.1*	2.1*	1.8*	1.8*
4.5	-	-			4.0	4.7*	2.5	3.7	1.8*	1.8*
	Blade	-			4.4	4.7*	2.8	3.8*	1.8*	1.8*
	Outriggers	Blade			4.7*	4.7*	3.8*	3.8*	1.8*	1.8*
3.0	-	-	7.0*	8.3*	3.9	5.6*	2.4	3.7	1.6	1.9*
	Blade	-	7.8	8.3*	4.3	5.6*	2.7	4.4*	1.8	1.9*
	Outriggers	Blade	8.3*	8.3*	5.6*	5.6*	4.0	4.4*	1.9*	1.9*
1.5	-	-	6.8	9.8*	3.8	5.5	2.3	3.6	1.4	2.1*
	Blade	-	7.5	9.8*	4.2	6.3*	2.6	4.7*	1.7	2.1*
	Outriggers	Blade	9.8*	9.8*	5.9	6.3*	3.9	4.7*	2.1*	2.1*
0	-	-	6.8	10.2	3.7	5.5	2.1	3.4	1.4	2.4
	Blade	-	7.6	10.3*	4.2	6.6*	2.4	4.8*	1.7	2.4*
	Outriggers	Blade	10.3*	10.3*	5.9	6.6*	3.8	4.8*	2.4*	2.4*
-1.5	-	-	6.4	10.5	3.3	5.3	2.0	3.2	1.6	2.7
	Blade	-	7.3	10.5*	3.7	6.7*	2.2	4.7*	1.8	3.1*
	Outriggers	Blade	10.5*	10.5*	5.9	6.7*	3.6	4.7*	3.0	3.1*
-3.0	-	-	5.9	10.5	3.0	5.0			2.1	3.4
	Blade	-	6.9	10.6*	3.4	6.1*			2.4	3.5*
	Outriggers	Blade	10.6*	10.6*	5.6	6.1*			3.5*	3.5*

Height Can be slewed through 360° In longitudinal position of undercarriage Max. reach \* Limited by hydr. capacity

The lift capacities with PowerLift function on the load hook of the Liebherr quick coupler SWA 33 without attachment are stated in metric tons (t) and are valid on a firm, level supporting surface with blocked oscillating axle. These capacities can be slewed through 360° with the undercarriage in the transverse position. Capacities in the longitudinal position of the undercarriage (±15°) are specified over the steering axle with the stabilizers raised and over the rigid axle with the stabilizers down. The values apply when the adjusting cylinder is in the optimal position. Indicated loads based on the ISO 10567 standard and do not exceed 75% of tipping or 87% of hydraulic capacity, or are limited by the permissible load of the load hook on the quick coupler (max. 5 t). Without the quick coupler, lift capacities will increase by up to 110 kg.

In accordance with the harmonised European Standard EN 474-5, hydraulic excavators used for lifting operations must be equipped with pipe fracture safety valves, an overload warning device, a load hook and a lift capacity chart.

# Equipments

## Clamshell grab

### Clamshell grab GMZ 18 Machine stability per ISO 10567\* (75% of tipping capacity)

Cutting width mm	Capacity ISO 7451 <sup>1)</sup> m <sup>3</sup>	Weight kg	Stabilizers raised			Rear blade down			Rear outriggers + front blade down			EW Stabilizers raised			EW Rear blade down			EW Rear outriggers + front blade down		
			Stick length (m)			Stick length (m)			Stick length (m)			Stick length (m)			Stick length (m)			Stick length (m)		
			2.05	2.25	2.45	2.05	2.25	2.45	2.05	2.25	2.45	2.05	2.25	2.45	2.05	2.25	2.45	2.05	2.25	2.45
<b>Two-piece boom 4.85 m</b>																				
320 <sup>1)</sup>	0.17	770	■	■	■	■	■	■	■	■	■	■	■	■	■	■	■	■	■	
400 <sup>1)</sup>	0.22	800	■	■	■	■	■	■	■	■	■	■	■	■	■	■	■	■	■	
600 <sup>1)</sup>	0.30	810	■	■	■	■	■	■	■	■	■	■	■	■	■	■	■	■	■	
800 <sup>1)</sup>	0.40	860	■	■	■	■	■	■	■	■	■	■	■	■	■	■	■	■	■	
320 <sup>2)</sup>	0.17	820	■	■	■	■	■	■	■	■	■	■	■	■	■	■	■	■	■	
400 <sup>2)</sup>	0.22	855	■	■	■	■	■	■	■	■	■	■	■	■	■	■	■	■	■	
600 <sup>2)</sup>	0.30	900	■	■	■	■	■	■	■	■	■	■	■	■	■	■	■	■	■	
800 <sup>2)</sup>	0.40	970	■	■	■	■	■	■	■	■	■	■	■	■	■	■	■	■	■	
<b>Offset two-piece boom 4.90 m</b>																				
320 <sup>1)</sup>	0.17	770	■	■	■	■	■	■	■	■	■	■	■	■	■	■	■	■	■	
400 <sup>1)</sup>	0.22	800	■	■	■	■	■	■	■	■	■	■	■	■	■	■	■	■	■	
600 <sup>1)</sup>	0.30	810	■	■	■	■	■	■	■	■	■	■	■	■	■	■	■	■	■	
800 <sup>1)</sup>	0.40	860	■	■	■	■	■	■	■	■	■	■	■	■	■	■	■	■	■	
320 <sup>2)</sup>	0.17	820	■	■	■	■	■	■	■	■	■	■	■	■	■	■	■	■	■	
400 <sup>2)</sup>	0.22	855	■	■	■	■	■	■	■	■	■	■	■	■	■	■	■	■	■	
600 <sup>2)</sup>	0.30	900	■	■	■	■	■	■	■	■	■	■	■	■	■	■	■	■	■	
800 <sup>2)</sup>	0.40	970	■	■	■	■	■	■	■	■	■	■	■	■	■	■	■	■	■	

\* indicated loads are based on ISO 10567 and do not exceed 75% of tipping or 87% of hydraulic capacity, max. stick length without quick coupler, lifted 360° on firm with blocked oscillating axle

<sup>1)</sup> without ejector

<sup>2)</sup> with ejector

Max. material weight ■ = ≤ 1.8t/m<sup>3</sup>, ■ = ≤ 1.5t/m<sup>3</sup>, △ = ≤ 1.2t/m<sup>3</sup>, — = not authorised

# Equipments

## Ditch cleaning bucket / tilt bucket

### Ditch cleaning bucket Machine stability per ISO 10567\* (75% of tipping capacity)

Cutting width mm	Capacity ISO 7451 <sup>1)</sup> m <sup>3</sup>	Weight kg	Stabilizers raised			Rear blade down			Rear outriggers + front blade down			EW Stabilizers raised			EW Rear blade down			EW Rear outriggers + front blade down		
			Stick length (m)			Stick length (m)			Stick length (m)			Stick length (m)			Stick length (m)			Stick length (m)		
			2.05	2.25	2.45	2.05	2.25	2.45	2.05	2.25	2.45	2.05	2.25	2.45	2.05	2.25	2.45	2.05	2.25	2.45
<b>Two-piece boom 4.85 m</b>																				
1,500 <sup>3)</sup>	0.35	275	■	■	■	■	■	■	■	■	■	■	■	■	■	■	■	■	■	
1,600 <sup>2)</sup>	0.55	650	■	■	■	■	■	■	■	■	■	■	■	■	■	■	■	■	■	
1,600 <sup>4)</sup>	0.55	690	■	■	■	■	■	■	■	■	■	■	■	■	■	■	■	■	■	
1,800 <sup>4)</sup>	0.65	720	■	■	△	■	■	■	■	■	■	■	■	■	■	■	■	■	■	
2,000 <sup>4)</sup>	0.70	755	■	△	△	■	■	■	■	■	■	■	■	■	■	■	■	■	■	
2,000 <sup>2)</sup>	0.50	685	■	■	■	■	■	■	■	■	■	■	■	■	■	■	■	■	■	
2,000 <sup>3)</sup>	0.48	350	■	■	■	■	■	■	■	■	■	■	■	■	■	■	■	■	■	
2,000 <sup>3)</sup>	0.65	390	■	■	■	■	■	■	■	■	■	■	■	■	■	■	■	■	■	
<b>Offset two-piece boom 4.90 m</b>																				
1,500 <sup>3)</sup>	0.35	275	■	■	■	■	■	■	■	■	■	■	■	■	■	■	■	■	■	
1,600 <sup>2)</sup>	0.55	650	■	■	■	■	■	■	■	■	■	■	■	■	■	■	■	■	■	
1,600 <sup>4)</sup>	0.55	690	■	■	■	■	■	■	■	■	■	■	■	■	■	■	■	■	■	
1,800 <sup>4)</sup>	0.65	720	△	△	△	■	■	■	■	■	■	■	■	■	■	■	■	■	■	
2,000 <sup>4)</sup>	0.70	755	△	△	—	■	△	△	■	■	■	■	■	△	■	■	■	■	■	
2,000 <sup>2)</sup>	0.50	685	■	■	■	■	■	■	■	■	■	■	■	■	■	■	■	■	■	
2,000 <sup>3)</sup>	0.48	350	■	■	■	■	■	■	■	■	■	■	■	■	■	■	■	■	■	
2,000 <sup>3)</sup>	0.65	390	■	■	■	■	■	■	■	■	■	■	■	■	■	■	■	■	■	

\* indicated loads are based on ISO 10567 and do not exceed 75% of tipping or 87% of hydraulic capacity, max. stick length without quick coupler, lifted 360° on firm with blocked oscillating axle

<sup>1)</sup> comparable with SAE (heaped)

<sup>2)</sup> ditch cleaning bucket with hydraulic cylinder (with 2 x 50° rotator)

<sup>3)</sup> rigid ditch cleaning bucket

<sup>4)</sup> ditch cleaning bucket with rotary motor (with 2 x 50° rotator)

Max. material weight ■ = ≤ 1.8t/m<sup>3</sup>, ■ = ≤ 1.5t/m<sup>3</sup>, △ = ≤ 1.2t/m<sup>3</sup>, — = not authorised

### Tilt bucket Machine stability per ISO 10567\* (75% of tipping capacity)

Cutting width mm	Capacity ISO 7451 <sup>1)</sup> m <sup>3</sup>	Weight kg	Stabilizers raised			Rear blade down			Rear outriggers + front blade down			EW Stabilizers raised			EW Rear blade down			EW Rear outriggers + front blade down		
			Stick length (m)			Stick length (m)			Stick length (m)			Stick length (m)			Stick length (m)			Stick length (m)		
			2.05	2.25	2.45	2.05	2.25	2.45	2.05	2.25	2.45	2.05	2.25	2.45	2.05	2.25	2.45	2.05	2.25	2.45
<b>Two-piece boom 4.85 m</b>																				
1,500 <sup>2)</sup>	0.60	650	■	■	■	■	■	■	■	■	■	■	■	■	■	■	■	■	■	
<b>Offset two-piece boom 4.90 m</b>																				
1,500 <sup>2)</sup>	0.60	650	■	■	△	■	■	■	■	■	■	■	■	■	■	■	■	■	■	

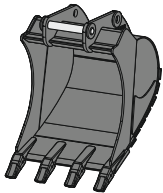
\* indicated loads are based on ISO 10567 and do not exceed 75% of tipping or 87% of hydraulic capacity, max. stick length without quick coupler, lifted 360° on firm with blocked oscillating axle

<sup>1)</sup> comparable with SAE (heaped)

<sup>2)</sup> tilt bucket with hydraulic cylinder (with 2 x 50° rotator)

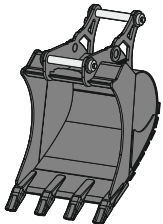
Max. material weight ■ = ≤ 1.8t/m<sup>3</sup>, ■ = ≤ 1.5t/m<sup>3</sup>, △ = ≤ 1.2t/m<sup>3</sup>, — = not authorised

# Attachments



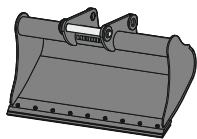
## Backhoe bucket TL 02

Mounting		direct mounting, SWA 33 mechanical, SWA 33 hydraulic, SWA 33 Solidlink, SWA 48 mechanical, SWA 48 hydraulic, SWA 48 Solidlink								
Cutting width	mm	300 <sup>3)4)</sup>	400 <sup>3)4)</sup>	500 <sup>4)</sup>	550	650	850	1.050	1.250	
Capacity	m <sup>3</sup>	0,17 <sup>5)</sup>	0,24 <sup>5)</sup>	0,32 <sup>5)</sup>	0,29	0,36	0,50	0,65	0,80	
Weight <sup>1)</sup>	kg	225	245	250	260	285	335	380	430	



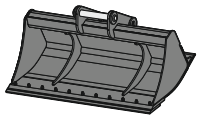
## 2in1 bucket HTL 02

Mounting		SWA 33 mechanical, SWA 33 hydraulic, SWA 33 Solidlink, SWA 48 mechanical, SWA 48 hydraulic, SWA 48 Solidlink								
Cutting width	mm	300 <sup>3)</sup>	400 <sup>3)</sup>	500 <sup>4)</sup>	650	850	1.050	1.250		
Capacity	m <sup>3</sup>	0,17	0,24	0,32	0,36	0,50	0,65	0,80		
Weight <sup>1)</sup>	kg	284	291	287	321	371	416	465		



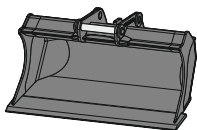
## Universal bucket

Mounting		SWA 33 mechanical, SWA 33 hydraulic, SWA 33 Solidlink, SWA 48 mechanical, SWA 48 hydraulic, SWA 48 Solidlink								
<b>UL 02</b>										
Cutting width	mm	1.400				1.400				
Capacity	m <sup>3</sup>	0.40				0.50				
Weight <sup>1)</sup>	kg	227				240				
<b>UL 03</b>										
Cutting width	mm	1.500								
Capacity	m <sup>3</sup>	0.60								
Weight <sup>1)</sup>	kg	368								



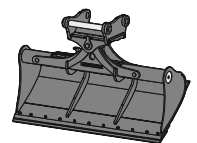
## Ditch cleaning bucket rigid

<b>GRL rigid 02</b>										
Mounting		direct mounting, SWA 33 mechanical, SWA 33 hydraulic, SWA 33 Solidlink, SWA 48 mechanical, SWA 48 hydraulic, SWA 48 Solidlink								
Cutting width	mm	1,500	2,000	2,000						
Capacity	m <sup>3</sup>	0,50	0,48	0,65						
Weight <sup>1)</sup>	kg	362	351	385						
<b>GRL rigid 02B</b>										
Mounting		SWA 33 mechanical, SWA 33 hydraulic, SWA 33 Solidlink								
Cutting width	mm	600	800	1,000	1,200	1,400	1,600	1,800	2,000	
Capacity	m <sup>3</sup>	0,17	0,25	0,30	0,38	0,45	0,50	0,57	0,65	
Weight <sup>1)</sup>	kg	167	196	225	255	293	330	360	390	



## Grading bucket PL 02

Mounting		SWA 33 mechanical, SWA 33 hydraulic, SWA 33 Solidlink, SWA 48 mechanical, SWA 48 hydraulic, SWA 48 Solidlink								
Cutting width	mm	1.400				1.600				
Capacity	m <sup>3</sup>	0.40				0.50				
Weight <sup>1)</sup>	kg	280				310				



## Ditch cleaning bucket with hydraulic cylinder GRL 90

Mounting		direct mounting, SWA 33 mechanical, SWA 33 hydraulic, SWA 33 Solidlink, SWA 48 mechanical, SWA 48 hydraulic, SWA 48 Solidlink										
Cutting width	mm	1,600	1,600	2,000	2,000	2,000	2,200	2,200	2,200	2,400	2,400	2,800
Capacity	m <sup>3</sup>	0,55	0,80	0,50	0,70	1,00	0,80	1,15	1,40	0,85	1,25	1,85
Weight <sup>2)</sup>	kg	690	850	695	875	935	910	985	995	890	1,000	1,090
Tilt angle		2 x 50°	2 x 50°	2 x 50°	2 x 50°	2 x 50°	2 x 50°	2 x 50°	2 x 50°	2 x 50°	2 x 50°	2 x 50°

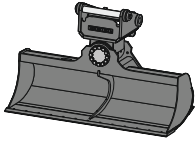
<sup>1)</sup> based on an attachment in a standard design with SWA 33 Solidlink quick coupler mounting

<sup>2)</sup> based on an attachment in a standard design with SWA 48 Solidlink quick coupler mounting

<sup>3)</sup> limited digging depth due to mounting for SWA 33 quick coupler

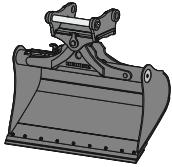
<sup>4)</sup> limited digging depth due to mounting for SWA 48 quick coupler

<sup>5)</sup> reduced capacity with direct mounting



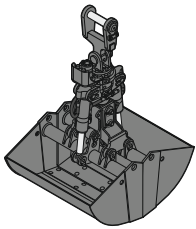
### Ditch cleaning bucket with rotary motor GRLM 20

Mounting	SWA 33 mechanical, SWA 33 hydraulic, SWA 33 Solidlink, SWA 48 mechanical, SWA 48 hydraulic, SWA 48 Solidlink						
Cutting width	mm	1,600	1,800	2,000	2,200		
Capacity	m <sup>3</sup>	0.55	0.65	0.70	0.80		
Weight <sup>1)</sup>	kg	688	720	753	785		
Tilt angle		2 x 50°	2 x 50°	2 x 50°	2 x 50°		



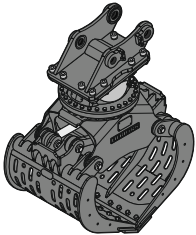
### Tilt bucket with hydraulic cylinder SL 90

Mounting	direct mounting, SWA 33 mechanical, SWA 33 hydraulic, SWA 33 Solidlink, SWA 48 mechanical, SWA 48 hydraulic, SWA 48 Solidlink						
Cutting width	mm	1,400	1,500	1,500	1,600	1,600	1,600
Capacity	m <sup>3</sup>	0.55	0.60	1.20	0.80	1.00	1.35
Weight <sup>2)</sup>	kg	715	738	970	820	890	970
Tilt angle		2 x 50°	2 x 50°	2 x 50°	2 x 50°	2 x 50°	2 x 50°



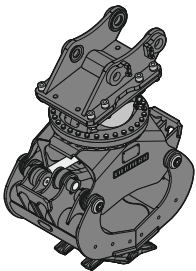
### Clamshell grab

Mounting	direct mounting, SWA 33 mechanical, SWA 33 hydraulic, SWA 33 Solidlink, SWA 48 mechanical, SWA 48 hydraulic, SWA 48 Solidlink						
<b>GM 05B Clamshell buckets</b>							
Shell width	mm	300	400	600	800	1,000	
Capacity <sup>3)</sup>	m <sup>3</sup>	0.10	0.13	0.20	0.27	0.34	
Opening width	mm	1,217	1,217	1,217	1,217	1,217	
Weight <sup>4)</sup>	kg	410	445	475	515	590	
<b>GMZ 18 Clamshell buckets</b>							
Shell width	mm	320	400	600	800		
Capacity <sup>3)</sup>	m <sup>3</sup>	0.17	0.22	0.30	0.40		
Opening width	mm	1,462	1,462	1,392	1,392		
Weight <sup>4)</sup>	kg	670	705	715	765		



### Sorting grab SG 20B

Mounting	direct mounting, SWA 33 mechanical, SWA 33 hydraulic, SWA 33 Solidlink, SWA 48 mechanical, SWA 48 hydraulic, SWA 48 Solidlink								
Shell type	perforated				closed				
Shell width	mm	800	1,000	1,200	1,400	800	1,000	1,200	1,400
Capacity	m <sup>3</sup>	0.40	0.50	0.60	0.70	0.40	0.50	0.60	0.70
Max. closing force	kN	40	40	40	40	40	40	40	40
Weight <sup>5)</sup>	kg	750	795	840	885	765	810	850	895



### Sorting grab SG 20B with universal shell

Mounting	direct mounting, SWA 33 mechanical, SWA 33 hydraulic, SWA 33 Solidlink, SWA 48 mechanical, SWA 48 hydraulic, SWA 48 Solidlink							
Shell width	mm	650						
Capacity	m <sup>3</sup>	0.15						
Max. closing force	kN	57						
Weight <sup>6)</sup>	kg	831						

<sup>1)</sup> based on an attachment in a standard design with SWA 33 Solidlink quick coupler mounting

<sup>2)</sup> based on an attachment in a standard design with SWA 48 Solidlink quick coupler mounting

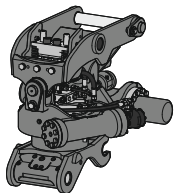
<sup>3)</sup> capacity specifications are theoretically determined values; fill level varies depending on the material being loaded

<sup>4)</sup> without suspension

<sup>5)</sup> with standard bolt-on cutting edge, without quick coupler mounting

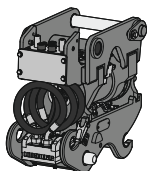
<sup>6)</sup> with Liebherr teeth Z 35 C, without quick coupler mounting

# Attachments



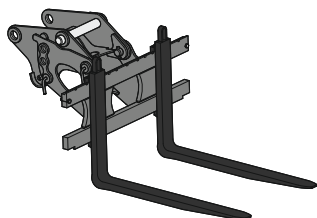
## Tiltrotator TR 20B

Mounting machine side	SWA 33 mechanical, SWA 33 hydraulic, SWA 33 Solidlink, SWA 48 mechanical, SWA 48 hydraulic, SWA 48 Solidlink
Mounting attachment side	SWA 33 mechanical, SWA 33 hydraulic, SWA 48 mechanical, SWA 48 hydraulic
Weight <sup>1)</sup>	kg 641
Rotation	360°
Tilt	2 x 50°



## Tilt unit LiTiU 33<sup>3)</sup>

Mounting machine side	SWA 33 Solidlink
Mounting attachment side	SWA 33 hydraulic, SWA 33 Solidlink
Weight <sup>2)</sup>	kg 410
Tilt	2 x 50°



## Pallet fork

### PG SWA 33 FEM II

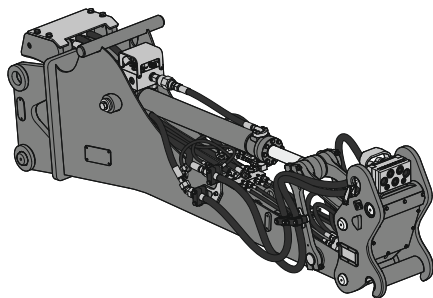
Mounting	SWA 33 mechanical, SWA 33 hydraulic, SWA 33 Solidlink
Fork length	mm 1,200 1,400
Max. width pallet fork	mm 1,245 1,245
Lift capacity (ISO 2328)	t 2.5 2.5
Weight	kg 330 363

### PG SWA 33 FEM III

Mounting	SWA 33 mechanical, SWA 33 hydraulic, SWA 33 Solidlink
Fork length	mm 1,200 1,500
Max. width pallet fork	mm 1,500 1,500
Lift capacity (ISO 2328)	t 5.0 5.0
Weight	kg 579 620

### PG SWA 48 FEM II

Mounting	SWA 48 mechanical, SWA 48 hydraulic, SWA 48 Solidlink
Fork length	mm 1,200 1,400
Max. width pallet fork	mm 1,245 1,245
Lift capacity (ISO 2328)	t 2.5 2.5
Weight	kg 345 378



## Stick extension LS 12

Mounting machine side	SWA 33 mechanical, SWA 33 hydraulic, SWA 33 Solidlink, SWA 33 Solidlink-9, SWA 48 mechanical, SWA 48 hydraulic, SWA 48 Solidlink, SWA 48 Solidlink-10
Mountings attachment side	direct mounting, SWA 33 mechanical, SWA 33 mechanical Solidlink <sup>6)</sup> , SWA 33 hydraulic <sup>7)</sup> , SWA 33 Solidlink <sup>6)7)8)</sup>
Length	m 2.25 2.70
Weight <sup>4)</sup>	kg 650 700

<sup>1)</sup> based on standard tiltrotator TR 20B with SWA 33 Solidlink quick coupler mounting machine side and SWA 33 hydraulic quick coupler mounting on the underside tiltrotator

<sup>2)</sup> based on standard tilt unit LiTiU 33 with SWA 33 Solidlink quick coupler mountings on both sides (underside of tilt unit and machine side quick coupler mounting)

<sup>3)</sup> on the machine side, a 14-pin signal contact strip is always required; switching takes place between tilting the LiTiU and the grab rotation circle for the attachment

<sup>4)</sup> based on standard stick extension LS 12 with SWA 33 Solidlink quick coupler mountings on both sides (underside of stick extension and machine side mounting) and electric switchover

<sup>5)</sup> attachment with high pressure circuit only possible with the manual switchover tipping cylinder or an extended hydraulic circuit on the carrier machine

<sup>6)</sup> attachment with high pressure circuit only possible with the electric / manual switchover tipping cylinder or an extended hydraulic circuit on the carrier machine

<sup>7)</sup> 14-pin signal contact strip is required, for example to control and monitor the hydraulic quick coupling system on the stick extension on the attachment side or to transfer electrical signals for the switchover

<sup>8)</sup> to use different hydraulic circuits, either Solidlink 33-9 / Solidlink 48-10 is required on the machine side, or a switchover system using the equipment power socket, controlled via the carrier machine's signal contact strip

# Equipment

## Undercarriage

General	
Trailer coupling with bolt (diameter of towing eye 40 mm), automatic (outrigger support)	+
Trailer coupling with bolt (diameter of towing eye 40 mm), automatic (blade support)	+
Hydraulic connection for tipping the trailer (single-acting tipping cylinder)	+
Mudguards (rear and front)	+
Lubrication undercarriage (decentral), manual (grease points)	+
Storage box left, incl. base plate	+
Storage box with drawer left	+
Storage box with drawer right	+
Storage box right, incl. base plate	+
Socket for lighting extension coupling, 24 V, ISO 1724 (rear)	+
Centralised lubrication manual undercarriage (one grease point)	+
Stabilization & driving	
Rear stabilizer blade 2,550 mm	+
Rear stabilizer blade 2,750 mm	+
Individual control, two outriggers	+
Piston rod guard for rear outriggers and front blade	+
Piston rod guard for rear blade	+
Piston rod guard for rear blade and front outriggers	+
Automatic swing axle lock	●
Rear outriggers, front stabilizer blade 2,550 mm	+
Rear outriggers, front stabilizer blade 2,750 mm	+
Single tyres, Alliance HD I-331 600/40-22.5	+
Single tyres, Michelin XF-445/70R19.5	+
Speeder 30 km/h	+
Speeder 37 km/h	+
Undercarriage EW 2,750 mm wide	+
Twin tyres, Liebherr EM 22, 290/90-20 PR 18	+
Twin tyres, Mitas EM-22, 10.00-20 PR 16	+

## Uppercarriage

General	
Extended tool kit including toolbox	+
Licence plate holder with light	+
Amber beacon on uppercarriage, rear, LED, 1 piece*	+
Storage box in the uppercarriage	●
Centralised lubrication automatic swing ring and equipment	●
Hydraulic & engine	
Tank refilling pump fuel	+
Hydraulic oil, Liebherr Hydraulic Basic 100 (0 to +55 °C)	+
Hydraulic oil, Liebherr Hydraulic HVI (-20 to +40 °C)	+
Hydraulic oil, Liebherr Hydraulic Plus 37 (-30 to +40 °C)*	+
Hydraulic oil, Liebherr Hydraulic Plus Arctic, high performance oil (-40 to +30 °C)	+
Hydraulic oil, Liebherr Hydraulic Plus, high performance oil (-30 to +45 °C)	+
Reversible fan drive	+
Air pre-filter with cyclonical dust trap	+
Automatic engine shutdown after idling (with timer)	+
Automatic engine shutdown after idling (without timer)	+
Bypass filter for hydraulic oil	+
Power Pack EU Stage V*	+
Power Pack USA Tier 4 Final*	+
Lubricants and operating fluids Standard (-20 to +40 °C)	●
Preheating fuel*	+

## Equipment

Boom	
PowerLift	●
Pipe fracture safety valve stick cylinder	●
Floating boom	+
Two-piece boom 4.85 m	+
Offset two-piece boom 4.90 m	+
Stick & attachment mounting	
GPS for attachment (via 5-pin signal contacts)	+
GPS for attachment (via 14-pin signal contacts)	+
Coupling system Solidlink 33-9 for quick coupler SWA 33	+
Coupling system Solidlink 48-10 for quick coupler SWA 48	+
Coupling system Solidlink for quick coupler SWA 33	+
Coupling system Solidlink for quick coupler SWA 48	+
Load holding valve for tipping cylinder	+
Load holding valve for tipping cylinder (both sides)	+
Lifting eye on stick 8.0t (500 mm from stick end pin)	+
Lifting eye on stick 8.0t (1,000 mm from stick end pin)	+
Stick 2.05 m	+
Stick 2.25 m	+
Stick 2.45 m	+
Stick 2.65 m	+
Quick coupler SWA 33 hydraulic	+
Quick coupler SWA 48 hydraulic	+
Hydraulic hose guard Solidlink	+
Tilt unit LiTiU 18 direct mounting	+
Tilt unit LiTiU 18 direct mounting with Solidlink	+
Signal contacts for Solidlink 5-pin	+
Signal contacts for Solidlink 5-pin and 14-pin	+
Signal contacts for Solidlink 14-pin	+
Socket on stick (24 V)	+
Connection via signal contacts for Solidlink (24 V)	+
Centralised lubrication automatic quick coupler	+
Centralised lubrication automatic connecting link	+

# Equipment



## Cab

Interior	
2-points seat belt, 2"	+
3-points seat belt, 2"	+
Storage tablet	●
Mood lighting LED	●
Armrests adjustable in length, height and inclination	●
Double pedal, left	+
Operator's seat Comfort	+
Operator's seat Premium	+
Operator's seat cover	+
Travel alarm system switchable	+
Fire extinguisher*	+
Air-conditioned bottle holder	●
Footrest	●
Seat belt reminder	●
Mobile phone holder with inductive charging	+
Automatic air conditioning	●
Wheel and joystick steering	+
Wheel steering	+
Multifunction mounting bracket	+
Radio Comfort	●
Acoustic back-up warning system not switchable	+
Additional roll-down sun blind for windscreen	+
Roll-down sun blinds for windscreen and roof window	●
Roll-down sun blinds for rear and side window, right	+
Auxiliary heater programmable	+
Air-conditioned storage compartment	●
Socket in cab (24 V)	●
Sockets in cab (USB)	●
First-aid box	+
Warning triangle	+
Exterior	
Rearview mirror	+
Electrically adjustable and heated outside rear-view mirrors	+
Cab air filters, accessible from ground level	●
Lightbar on cab, LED	+
Warning beacon foldable on cab, LED, 1 piece	+
Roof window wiper	+
FOPS top guard flat	+
FOPS top guard	+
FGPS front guard with side opening	+
Retractable laminated two-piece windscreen	+

## General

Liebherr Connect	
MyLiebherr Maintenance	+
MyLiebherr Performance	+
MyLiebherr Portal <sup>1)</sup>	●

● = Standard, + = Option

\* country-dependent, <sup>1)</sup> free activation required

Options and /or special equipment, supplied by vendors other than Liebherr, are only to be installed with the knowledge and approval of Liebherr in order to retain warranty.



## Control

Safety & operation	
Digging brake, automatic	●
Ride control	+
Boom cylinder cushioning	+
Modetronic	●
Positioning swing brake automatic	+
Positioning swing brake automatic and manual	+
Overload warning system	●
Hydraulic & control	
10" colour touchscreen	●
Control pattern digital	●
Attachment continuous operation system	+
Display with haptic feedback	●
Grapple lines for stick with tipping kinematic	+
High pressure circuit with Tool Control	+
Joysticks Premium	●
Fuel level on touchscreen	●
Leak oil lines for attachment	+
Mowing-bucket operation	+
Medium pressure circuit	●
Mode selector	●
Power Plus for Tools	+
Filter for hydraulic hammer return flow	+
Touchpad 3.5"	●
Preparation for tiltrotator	+
Assistance systems	
Working envelope limitation Advanced	●
Cruise control	●
Integral tyre pressure monitoring system	+
Machine control 2D	●
Machine control 3D Leica	+
Machine control 3D ready Leica	+
MiC 4.0 BUS communication standard	●
Smartphone interface	●
Skyview 360°	+
Smart Key Comfort	+
Smart Key Standard	+
Preparation for machine control system	+



## Packages

Light package Comfort	+
Light package Standard	+
Light package Stick	+
Light package Surround	+

## Liebherr-Hydraulikbagger GmbH

Liebherrstraße 12 · 88457 Kirchdorf (Iller), Germany · Phone +49 7354 80-0

info.lhb@liebherr.com · www.liebherr.com · www.facebook.com/LiebherrConstruction