
R 930 Litronic

LIEBHERR

Crawler excavator

Generation

8

Operating weight

30,400–37,750 kg

Engine

180 kW / 245 HP
Stage V

Bucket capacity

1.00–2.15 m³



Experience the progress

R 930

① Safety

- Panoramic visibility with no obstructions and camera on the rear and the right side equipment
- Lifiable console for easy and safe access to cab
- ROPS-certified cab structure: rollover protection
- Emergency exit via the rear cab window whatever the configuration of the excavator
- Right window and windshield in laminated and tinted glass

② Equipment

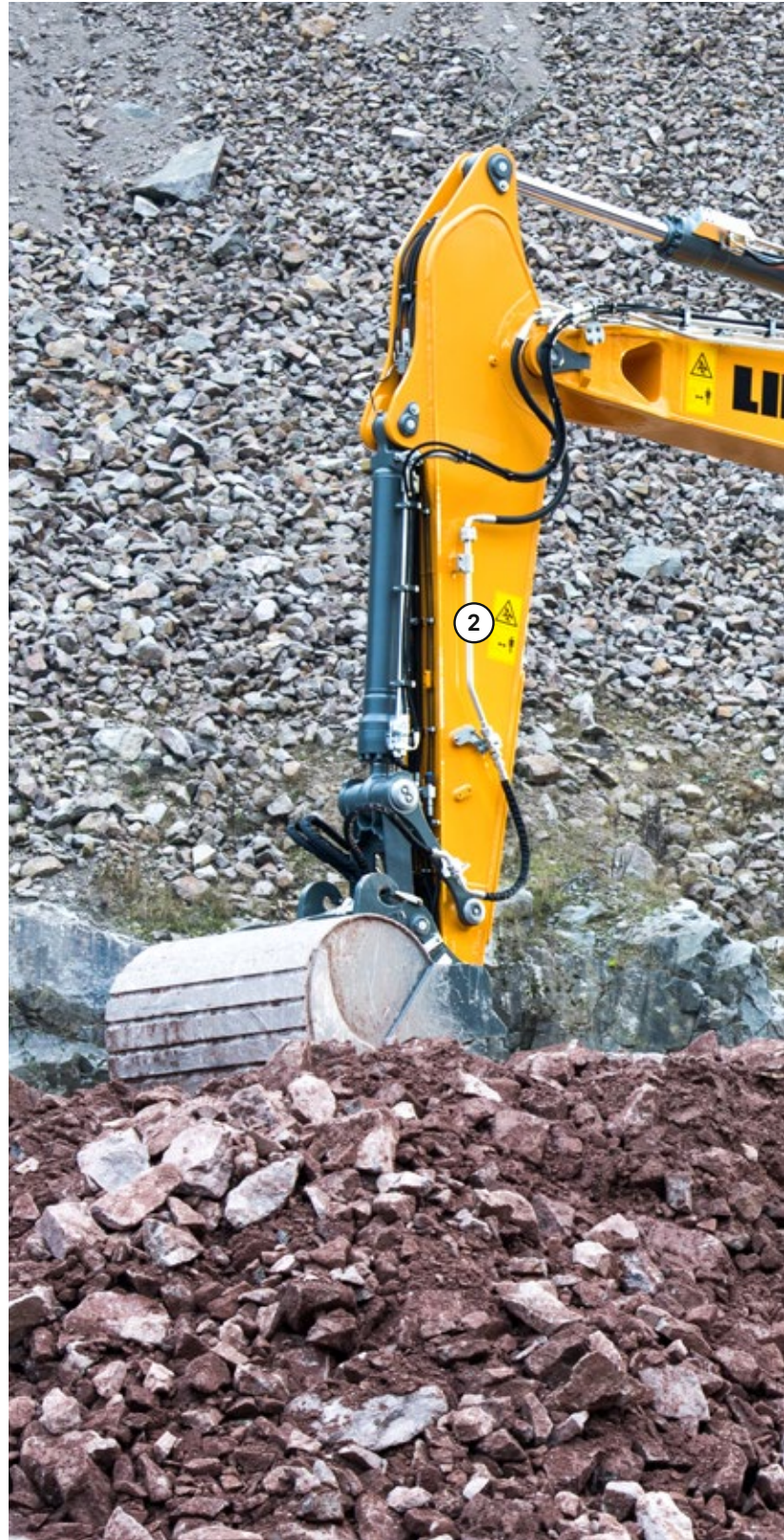
- Large choice of types and sizes of equipment
- Safety check valves for hoist and stick cylinders (option)
- Longer lifespan of components and higher productivity thanks to automatic centralised lubrication system

③ Maintenance

- Innovative servicing concept, with service points accessible from ground level
- Lateral access to uppercarriage and large maintenance platform
- Engine oil, hydraulic oil, fuel and urea levels visible on the display

④ Comfort

- Spacious, air-conditioned work space
- Pneumatic seat with vertical and horizontal suspension
- Easy-to-use high resolution 9" colour touchscreen
- Completely retractable front cab window
- LED lighting as standard



⑤ Engine

- Liebherr engine that conforms with the Stage V European exhaust emissions standard
- Automatic engine speed increase / decrease controlled by proximity sensors in the joysticks

⑥ Undercarriage

- Robust, reliable X-frame undercarriage, easy to secure thanks to its integrated eyelets
- Easy maintenance
- Maintenance-free travel gear and track rollers with lifetime lubrication
- Extra storage as an option



Technical data



Engine

Rating per ISO 9249	180 kW (245 HP) at 1,800 RPM
Torque	1,255 Nm at 1,350 RPM
Model	Liebherr D934 A7-25
Type	4 cylinder in-line
Bore	122 mm
Stroke	150 mm
Displacement	7.0 l
Engine operation	4-stroke diesel Common-Rail Turbo-charged and after-cooler
Exhaust gas treatment	Stage V DOC + SCR Filter Passive regeneration by thermo management
Cooling system	Water-cooled and oil cooler, after-cooled and fuel cooled
Air cleaner	Dry-type air cleaner with pre-cleaner
Fuel tank	620 l
Urea tank	90 l
Electrical system	
Voltage	24 V
Batteries	2 x 135 Ah / 12 V
Alternator	Three-phase current 24 V / 140 A
Engine idling	Sensor controlled



Hydraulic controls

Power distribution	Via control valves, simultaneous and independent actuation of undercarriage, swing drive and equipment
Electric servo circuit	Electro-hydraulic control
Equipment and swing	Proportional via joystick levers
Travel	- Proportional control via foot pedals or removable levers - Automatic or manual speed adjustment
Additional functions	Proportional regulation via foot pedals or mini-joystick



Hydraulic system

Hydraulic system	Positive Control hydraulic system. Demand-based, double independent pump flows Features high system dynamics and sensitivity provided by integrated system controlling Independent circuit for rotation
Hydraulic pumps	
For equipment and travel drive	Liebherr, variable displacement, swashplate double pump
Max. flow	2 x 265 l/min.
Max. pressure	380 bar
For swing drive	Swashplate pump, closed-loop circuit
Max. flow	200 l/min.
Max. pressure	400 bar
Pump management	Electronic management synchronous to the control block
Hydraulic tank	239 l
Hydraulic system	max. 475 l
Filtration	1 main return filter with integrated partial micro filtration (10 µm)
Cooling system	Compact cooler, consisting of a water cooler, with hydraulic oil cooler, gearbox oil cooler, fuel cooler and after-cooler cores and hydrostatically driven fan
MODE selection	Adjustment of engine and hydraulic performance via a mode pre-selector to match application, e.g. for especially economical and environmentally friendly operation or for maximum digging performance and heavy-duty jobs
Engine speed and performance setting	Stepless adjustment of engine output and hydraulic power via engine speed



Swing drive

Drive	Liebherr swashplate motor with integrated brake valve and torque control
Transmission	Liebherr compact planetary reduction gears
Swing ring	Liebherr, sealed race ball bearing swing ring, internal teeth
Swing speed	0-10.1 RPM stepless
Swing torque	99 kNm
Holding brake	Wet multi-disc (spring applied, pressure released)


Cab

Cab	ROPS safety cab structure (roll-over protection system according to ISO 12117-2:2008) with windscreen, totally or partially retractable (only upper part), under cab roof, LED headlights integrated in the ceiling, a door with a sliding window (can be opened on both sides), large storing box and several stowing possibilities, shock-absorbing suspension, laminated right hand side and roof windows, all windows tinted, separate extensible window shades for the sunroof window and windscreen, cigarette lighter and 24 V plug, 12V plug, cup holder, mobile phone storage net
Operator's seat	Liebherr-Comfort seat, airsprung with automatic weight adjustment, vertical and longitudinal seat damping including consoles and joysticks. Seat and armrests adjustable separately and in combination (adjustable in length, height and inclination), seat heating as standard Oscillating consoles with seat, tiltable console left
Arm consoles	
Operation and displays	Large high-resolution operating unit, intuitive, colour display with touchscreen, video-compatible, numerous setting, control and monitoring options, e.g. air conditioning control, fuel consumption, machine and attachment parameters
Air-conditioning	Automatic air-conditioning, recirculated air function, fast de-icing and demisting at the press of a button, air vents can be operated via a menu. Recirculated air and fresh air filters can be easily replaced and are accessible from the outside. Heating-cooling unit, designed for extreme outside temperatures, sensors for solar radiation, inside and outside temperatures The air conditioning system contains fluorinated greenhouse gases
Refrigerant	R134a
Global warming potential	1,430
Quantity at 25 °C*	1,260 g
CO ₂ equivalent	1.80 t
Vibration emission**	
Hand / arm vibrations	< 2.5 m/s ² , according with ISO 5349-1:2001
Whole-body vibrations	< 0.5 m/s ²
Measuring inaccuracy	According with standard EN 12096:1997
Noise emission	
ISO 6396	71 dB(A) = L _{PA} (inside cab)
2000/14/EC	105 dB(A) = L _{WA} (surround noise)


Undercarriage

Versions	
NLC	Gauge 2,390 mm
LC	Gauge 2,590 mm
LC-V	Gauge 2,390 mm / 2,890 mm
Drive	Liebherr swashplate motor with brake valves on both sides
Transmission	Liebherr planetary reduction gear
Maximum travel speed	3.5 km/h low range (NLC / LC) 5.8 km/h high range (NLC / LC) 2.8 km/h low range (LC-V) 4.6 km/h high range (LC-V)
Drawbar pull on crawler	261 kN (NLC / LC) 325 kN (LC-V)
Track components	D7, D7G, maintenance-free
Track rollers / Carrier rollers	9 / 2
Tracks	Sealed and greased
Track pads	Triple grouser
Holding brake	Wet multi-disc (spring applied, pressure released)
Brake valves	Integrated into travel motor
Lashing eyes	Integrated

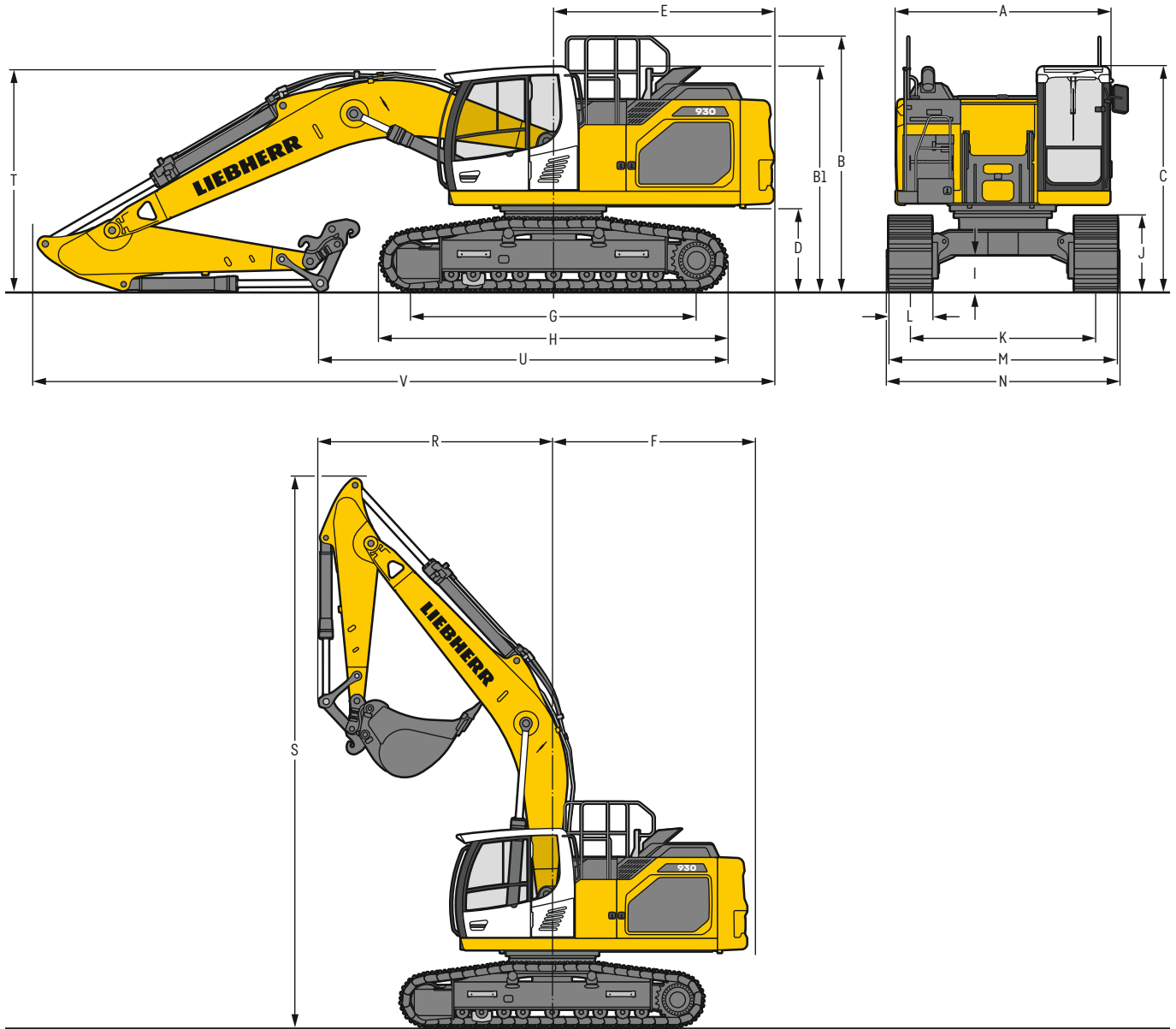

Equipment

Type	Combination of resistant steel plates and cast steel components
Hydraulic cylinders	Liebherr cylinders with seal and guidance systems
Bearings	Sealed, low maintenance
Lubrication	Liebherr central lubrication system
Hydraulic connections	Pipes and hoses equipped with SAE split-flange connections
Buckets	Standard equipped with Liebherr tooth system

* Valid for standard machine without operator's cab elevation and without height adjustable cab

** For the risk assessment according to 2002/44/EC see ISO/TR 25398:2006

Dimensions



	NLC					mm	LC	mm				
A	Uppercarriage width					2,990 ²⁾		2,990 ²⁾				
B	Uppercarriage height					3,570		3,570				
B1	Uppercarriage height (handrails folded)					3,130		3,130				
C	Cab height					3,150		3,150				
D	Counterweight ground clearance					1,175		1,175				
E	Rear-end length					3,075		3,075				
F	Tail swing radius					3,200		3,200				
G	Wheelbase					3,990		3,990				
H	Undercarriage length					4,840		4,840				
I	Undercarriage ground clearance					505		505				
J	Track height					1,055		1,055				
K	Track gauge					2,390		2,590				
L	Track pad width							600	700	750	800	900
M	Width over tracks							2,990	3,090	3,140	3,190	3,290
N	Width over steps							2,990	2,990	3,190 ¹⁾	3,190 ¹⁾	3,190 ¹⁾
								600	700	750	800	900
								3,190	3,290	3,340	3,390	3,490
								3,190	3,190	3,390 ¹⁾	3,390 ¹⁾	3,390 ¹⁾

		LC-V					mm				
A	Uppercarriage width						2,990 ²⁾				
B	Uppercarriage height						3,570				
B1	Uppercarriage height (handrails folded)						3,130				
C	Cab height						3,285				
D	Counterweight ground clearance						1,310				
E	Rear-end length						3,075				
F	Tail swing radius						3,200				
G	Wheelbase						4,170				
H	Undercarriage length						5,030				
I	Undercarriage ground clearance						680				
J	Track height						1,100				
K	Track gauge						2,390/2,890 ³⁾				
L	Track pad width						900				
M	Width over tracks	600	700	750	800		2,990/3,490 ³⁾	3,090/3,590 ³⁾	3,140/3,640 ³⁾	3,190/3,690 ³⁾	3,290/3,790 ³⁾
N	Width over steps						3,170/3,670 ^{1) 3)}	3,170/3,670 ^{1) 3)}	3,170/3,670 ^{1) 3)}	3,170/3,670 ^{1) 3)}	3,320/3,820 ^{1) 3)}

¹⁾ width with removable steps

²⁾ without door stop device and spacer

³⁾ work position

	Stick length	m	Mono boom 6.20 m with quick coupler			Mono boom straight 6.50 m with quick coupler			Two-piece boom 6.40 m with quick coupler		
			NLC	LC	LC-V	NLC	LC	LC-V	NLC	LC	LC-V
R	Front swing radius	2.50		3,700			3,250			2,600	
		2.80		3,700			3,250			2,700	
		3.20		3,700			3,250			2,800	
		3.70		3,700			3,200			2,850	
S	Height with boom up	2.50	8,700	8,700	8,850	9,300	9,300	9,450	9,450	9,450	9,600
		2.80	3,050	3,050	3,150	2,950	2,950	3,000	2,900	2,900	3,000
T	Boom height	2.50	3,100	3,100	3,150	3,050	3,050	3,100	2,950	2,950	3,050
		2.80	3,150	3,150	3,200	3,150	3,150	3,150	3,050	3,050	3,100
		3.20	3,200	3,200	3,250	3,250	3,250	3,250	3,200	3,200	3,150
		3.70	3,200	3,200	3,250	3,250	3,250	3,250	3,200	3,200	3,150
U	Length on ground	2.50	8,700	8,700	8,750	6,500	6,500	6,500	6,400	6,400	6,400
		2.80	5,700	5,700	8,500	6,300	6,300	6,300	6,150	6,150	6,150
		3.20	5,350	5,350	8,100	6,000	6,000	6,300	5,850	5,850	5,850
		3.70	4,850	4,850	7,600	5,600	5,600	5,600	5,450	5,450	5,450
V	Overall length Bucket			10,400			10,800			10,650	
				1.60 m ³			1.60 m ³			1.60 m ³	

Transport dimensions

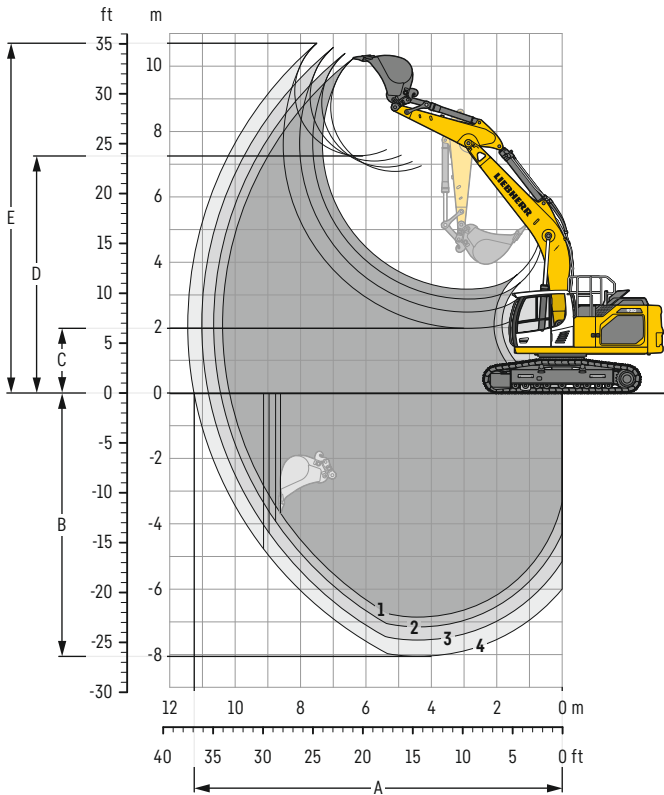
removable elements disassembled

	Undercarriage	Mono boom 6.20 m					Mono boom straight 6.50 m					Two-piece boom 6.40 m				
		mm					mm					mm				
Pad width		600	700	750	800	900	600	700	750	800	900	600	700	750	800	900
Transport width	NLC	2,990	3,090	3,140	3,190	3,290	2,990	3,090	3,140	3,190	3,290	2,990	3,090	3,140	3,190	3,290
	LC	3,190	3,290	3,340	3,390	3,490	3,190	3,290	3,340	3,390	3,490	3,190	3,290	3,340	3,390	3,490
	LC-V	2,990	3,090	3,140	3,190	3,290	2,990	3,090	3,140	3,190	3,290	2,990	3,090	3,140	3,190	3,290

	Undercarriage / Stick m	NLC			LC			LC-V			NLC			LC			LC-V		
		mm			mm			mm			mm			mm					
Transport length				10,400					10,800					10,650					
Transport height	2.50	3,150	3,150	3,285	3,150	3,150	3,285	3,150	3,150	3,285	3,150	3,150	3,285	3,150	3,150	3,285	3,150	3,150	
	2.80	3,150	3,150	3,285	3,150	3,150	3,285	3,150	3,150	3,285	3,150	3,150	3,285	3,150	3,150	3,285	3,150	3,150	
	3.20	3,150	3,150	3,285	3,150	3,150	3,285	3,150	3,150	3,285	3,150	3,150	3,285	3,150	3,150	3,285	3,150	3,150	
	3.70	3,200	3,200	3,285	3,200	3,200	3,285	3,250	3,250	3,285	3,200	3,200	3,285	3,200	3,200	3,285	3,200	3,200	

Backhoe bucket

with mono boom 6.20 m



Digging envelope

with quick coupler		1	2	3	4
Stick length	m	2.50	2.80	3.20	3.70
A Max. reach at ground level	m	10.17	10.45	10.82	11.26
B Max. digging depth	m	6.86	7.16	7.56	8.05
C Min. dumping height	m	3.18	2.88	2.48	1.98
D Max. dumping height	m	6.78	6.92	7.09	7.25
E Max. cutting height	m	10.25	10.38	10.56	10.70

Forces

without quick coupler		1	2	3	4
Stick digging force (ISO 6015)	kN	168	156	142	128
Bucket digging force (ISO 6015)	kN	204	204	204	204
Stick digging force (SAE J1179)	kN	160	149	136	123
Bucket digging force (SAE J1179)	kN	178	178	178	178

Operating weight and ground pressure

The operating weight includes the basic machine with counterweight 5.1t, mono boom 6.20 m, stick 3.20 m, quick coupler SWA 66 (350 kg) and bucket 1.60 m³ (1,170 kg).

Undercarriage		NLC				
Pad width	mm	600	700	750	800	900
Weight	kg	30,400	30,750	30,950	31,100	31,450
Ground pressure	kg/cm ²	0.59	0.51	0.48	0.45	0.41

Undercarriage		LC				
Pad width	mm	600	700	750	800	900
Weight	kg	30,500	30,850	31,050	31,200	31,550
Ground pressure	kg/cm ²	0.59	0.51	0.48	0.45	0.41

Undercarriage		LC-V				
Pad width	mm	600	700	750	800	900
Weight	kg	34,500	34,900	35,150	35,350	35,750
Ground pressure	kg/cm ²	0.64	0.56	0.52	0.49	0.44

The operating weight includes the basic machine with counterweight 6.2t, mono boom 6.20 m, stick 3.20 m, quick coupler SWA 66 (350 kg) and bucket 1.60 m³ (1,170 kg).

Undercarriage		NLC				
Pad width	mm	600	700	750	800	900
Weight	kg	31,500	31,850	32,050	32,200	32,550
Ground pressure	kg/cm ²	0.61	0.53	0.50	0.47	0.42

Undercarriage		LC				
Pad width	mm	600	700	750	800	900
Weight	kg	31,600	31,950	32,150	32,300	32,650
Ground pressure	kg/cm ²	0.61	0.53	0.50	0.47	0.42

Undercarriage		LC-V				
Pad width	mm	600	700	750	800	900
Weight	kg	35,600	36,000	36,250	36,450	36,850
Ground pressure	kg/cm ²	0.66	0.58	0.54	0.51	0.46

Buckets Machine stability per ISO 10567* (75% of tipping capacity)

Cutting width mm	Capacity ISO 7451 m ³	Weight ³⁾ kg	Weight ⁴⁾ kg	NLC undercarriage (with track pads 600 mm)								LC undercarriage (with track pads 600 mm)								LC-V undercarriage (with track pads 600 mm)							
				Stick length (m)				Stick length (m)				Stick length (m)				Stick length (m)				Stick length (m)							
				without quick coupler				with quick coupler				without quick coupler				with quick coupler				without quick coupler				with quick coupler			
2.50	2.80	3.20	3.70	2.50	2.80	3.20	3.70	2.50	2.80	3.20	3.70	2.50	2.80	3.20	3.70	2.50	2.80	3.20	3.70	2.50	2.80	3.20	3.70				
with counterweight 5.1 t																											
STD ¹⁾	1,050	1.00	870	930	▲	▲	▲	▲	▲	▲	▲	▲	▲	▲	▲	▲	▲	▲	▲	▲	▲	▲	▲	▲			
	1,250	1.25	1,000	1,050	▲	▲	▲	▲	▲	▲	▲	▲	▲	▲	▲	▲	▲	▲	▲	▲	▲	▲	▲	▲			
	1,400	1.45	1,070	1,130	▲	▲	▲	■	▲	▲	▲	▲	▲	▲	▲	▲	▲	▲	▲	▲	▲	▲	▲	▲			
	1,550	1.60	1,110	1,170	▲	▲	■	▲	▲	▲	▲	▲	▲	▲	▲	▲	▲	▲	▲	▲	▲	▲	▲	▲			
	1,650	1.75	1,160	1,220	■	■	▲	▲	■	▲	▲	▲	▲	▲	▲	▲	▲	▲	▲	▲	▲	▲	▲	▲			
	1,550	1.85	1,170	1,230	■	▲	■	▲	▲	▲	▲	▲	▲	▲	▲	▲	▲	▲	▲	▲	▲	▲	▲	▲			
	1,650	2.00	1,210	1,270	▲	■	▲	▲	▲	▲	▲	▲	▲	▲	▲	▲	▲	▲	▲	▲	▲	▲	▲	▲			
	1,750	2.15	1,260	1,320	■	▲	▲	—	▲	▲	▲	▲	▲	▲	▲	▲	▲	▲	▲	▲	▲	▲	▲	▲			
HD ²⁾	1,050	1.00	1,000	1,050	▲	▲	▲	▲	▲	▲	▲	▲	▲	▲	▲	▲	▲	▲	▲	▲	▲	▲	▲	▲			
	1,250	1.25	1,140	1,200	▲	▲	▲	▲	▲	▲	▲	▲	▲	▲	▲	▲	▲	▲	▲	▲	▲	▲	▲	▲			
	1,400	1.45	1,230	1,290	▲	▲	■	▲	▲	▲	▲	▲	▲	▲	▲	▲	▲	▲	▲	▲	▲	▲	▲	▲			
	1,550	1.60	1,290	1,350	▲	■	▲	■	▲	▲	▲	▲	▲	▲	▲	▲	▲	▲	▲	▲	▲	▲	▲	▲			
	1,650	1.75	1,350	1,410	■	▲	■	▲	▲	▲	▲	▲	▲	▲	▲	▲	▲	▲	▲	▲	▲	▲	▲	▲			
	1,550	1.85	1,340	1,400	▲	▲	▲	▲	▲	▲	▲	▲	▲	▲	▲	▲	▲	▲	▲	▲	▲	▲	▲	▲			
	1,650	2.00	1,400	1,460	■	■	▲	▲	■	▲	▲	▲	▲	▲	▲	▲	▲	▲	▲	▲	▲	▲	▲	▲			
	1,750	2.15	1,450	1,510	▲	▲	▲	—	▲	▲	▲	▲	▲	▲	▲	▲	▲	▲	▲	▲	▲	▲	▲	▲			
with counterweight 6.2 t																											
STD ¹⁾	1,050	1.00	870	930	▲	▲	▲	▲	▲	▲	▲	▲	▲	▲	▲	▲	▲	▲	▲	▲	▲	▲	▲	▲			
	1,250	1.25	1,000	1,050	▲	▲	▲	▲	▲	▲	▲	▲	▲	▲	▲	▲	▲	▲	▲	▲	▲	▲	▲	▲			
	1,400	1.45	1,070	1,130	▲	▲	▲	■	▲	▲	▲	▲	▲	▲	▲	▲	▲	▲	▲	▲	▲	▲	▲	▲			
	1,550	1.60	1,110	1,170	▲	▲	▲	■	▲	▲	▲	▲	▲	▲	▲	▲	▲	▲	▲	▲	▲	▲	▲	▲			
	1,650	1.75	1,160	1,220	▲	▲	■	▲	▲	▲	▲	▲	▲	▲	▲	▲	▲	▲	▲	▲	▲	▲	▲	▲			
	1,550	1.85	1,170	1,230	▲	▲	■	■	▲	▲	▲	▲	▲	▲	▲	▲	▲	▲	▲	▲	▲	▲	▲	▲			
	1,650	2.00	1,210	1,270	■	■	▲	■	▲	▲	▲	▲	▲	▲	▲	▲	▲	▲	▲	▲	▲	▲	▲	▲			
	1,750	2.15	1,260	1,320	▲	▲	■	▲	▲	▲	▲	▲	▲	▲	▲	▲	▲	▲	▲	▲	▲	▲	▲	▲			
HD ²⁾	1,050	1.00	1,000	1,050	▲	▲	▲	▲	▲	▲	▲	▲	▲	▲	▲	▲	▲	▲	▲	▲	▲	▲	▲	▲			
	1,250	1.25	1,140	1,200	▲	▲	▲	▲	▲	▲	▲	▲	▲	▲	▲	▲	▲	▲	▲	▲	▲	▲	▲	▲			
	1,400	1.45	1,230	1,290	▲	▲	▲	■	▲	▲	▲	▲	▲	▲	▲	▲	▲	▲	▲	▲	▲	▲	▲	▲			
	1,550	1.60	1,290	1,350	▲	▲	▲	■	▲	▲	▲	▲	▲	▲	▲	▲	▲	▲	▲	▲	▲	▲	▲	▲			
	1,650	1.75	1,350	1,410	▲	▲	■	▲	▲	▲	▲	▲	▲	▲	▲	▲	▲	▲	▲	▲	▲	▲	▲	▲			
	1,550	1.85	1,340	1,400	▲	■	▲	■	▲	▲	▲	▲	▲	▲	▲	▲	▲	▲	▲	▲	▲	▲	▲	▲			
	1,650	2.00	1,400	1,460	■	■	▲	▲	■	▲	▲	▲	▲	▲	▲	▲	▲	▲	▲	▲	▲	▲	▲	▲			
	1,750	2.15	1,450	1,510	▲	■	▲	▲	■	■	▲	▲	■	■	▲	▲	■	▲	▲	▲	■	▲	▲	■			

* Indicated loads are based on ISO 10567, at maximum reach, and may be swung 360° on firm and even ground

¹⁾ Standard bucket with teeth Z 50

²⁾ HD bucket with teeth Z 50

³⁾ Bucket for direct mounting

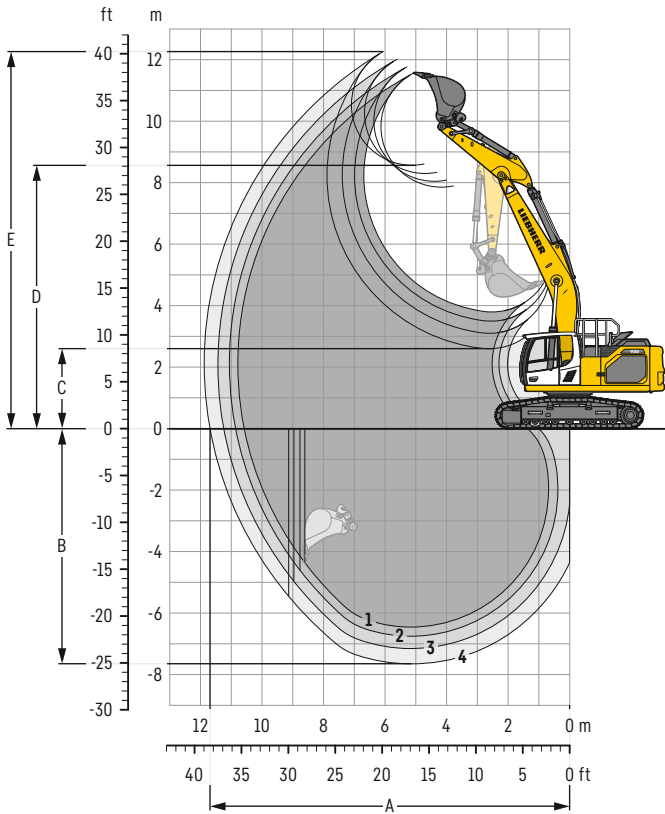
⁴⁾ Bucket for mounting to quick coupler SWA 66 (350 kg)

Other buckets available upon request

Max. material weight ▲ = ≤ 2.0t/m³, ■ = ≤ 1.8t/m³, ▲ = ≤ 1.65t/m³, ■ = ≤ 1.5t/m³, ▲ = ≤ 1.2t/m³, — = not authorised

Backhoe bucket

with mono boom straight 6.50 m



Digging envelope

with quick coupler		1	2	3	4
Stick length	m	2.50	2.80	3.20	3.70
A Max. reach at ground level	m	10.58	10.86	11.24	11.69
B Max. digging depth	m	6.45	6.75	7.15	7.65
C Min. dumping height	m	3.79	3.49	3.10	2.60
D Max. dumping height	m	7.85	8.04	8.30	8.56
E Max. cutting height	m	11.57	11.76	12.02	12.26

Forces

without quick coupler		1	2	3	4
Stick digging force (ISO 6015)	kN	168	156	142	128
Bucket digging force (ISO 6015)	kN	204	204	204	204
Stick digging force (SAE J1179)	kN	160	149	136	123
Bucket digging force (SAE J1179)	kN	178	178	178	178

Operating weight and ground pressure

The operating weight includes the basic machine with counterweight 5.1t, mono boom straight 6.50 m, stick 3.20 m, quick coupler SWA 66 (350 kg) and bucket 1.60 m³ (1,170 kg).

Undercarriage		NLC				
Pad width	mm	600	700	750	800	900
Weight	kg	30,450	30,800	31,000	31,150	31,500
Ground pressure	kg/cm ²	0.59	0.51	0.48	0.45	0.41

Undercarriage		LC				
Pad width	mm	600	700	750	800	900
Weight	kg	30,550	30,900	31,100	31,250	31,600
Ground pressure	kg/cm ²	0.59	0.51	0.48	0.46	0.41

Undercarriage		LC-V				
Pad width	mm	600	700	750	800	900
Weight	kg	34,550	34,950	35,200	35,400	35,800
Ground pressure	kg/cm ²	0.64	0.56	0.52	0.49	0.44

The operating weight includes the basic machine with counterweight 6.2t, mono boom straight 6.50 m, stick 3.20 m, quick coupler SWA 66 (350 kg) and bucket 1.60 m³ (1,170 kg).

Undercarriage		NLC				
Pad width	mm	600	700	750	800	900
Weight	kg	31,550	31,900	32,100	32,250	32,600
Ground pressure	kg/cm ²	0.61	0.53	0.50	0.47	0.42

Undercarriage		LC				
Pad width	mm	600	700	750	800	900
Weight	kg	31,650	32,000	32,200	32,350	32,700
Ground pressure	kg/cm ²	0.62	0.53	0.50	0.47	0.42

Undercarriage		LC-V				
Pad width	mm	600	700	750	800	900
Weight	kg	35,650	36,050	36,300	36,500	36,900
Ground pressure	kg/cm ²	0.66	0.58	0.54	0.51	0.46

Buckets Machine stability per ISO 10567* (75% of tipping capacity)

Cutting width mm	Capacity ISO 7451 m ³	Weight ³⁾ kg	Weight ⁴⁾ kg	NLC undercarriage (with track pads 600 mm)								LC undercarriage (with track pads 600 mm)								LC-V undercarriage (with track pads 600 mm)							
				Stick length (m)				Stick length (m)				Stick length (m)				Stick length (m)				Stick length (m)							
				without quick coupler				with quick coupler				without quick coupler				with quick coupler				without quick coupler				with quick coupler			
2.50	2.80	3.20	3.70	2.50	2.80	3.20	3.70	2.50	2.80	3.20	3.70	2.50	2.80	3.20	3.70	2.50	2.80	3.20	3.70	2.50	2.80	3.20	3.70				
with counterweight 5.1 t																											
STD ¹⁾	1,050	1.00	870	930	▲	▲	▲	▲	▲	▲	▲	▲	▲	▲	▲	▲	▲	▲	▲	▲	▲	▲	▲	▲			
	1,250	1.25	1,000	1,050	▲	▲	▲	■	▲	▲	■	▲	▲	▲	▲	▲	▲	▲	▲	▲	▲	▲	▲	▲			
	1,400	1.45	1,070	1,130	▲	■	■	■	▲	■	■	△	▲	▲	▲	■	▲	▲	▲	■	▲	▲	▲	▲			
	1,550	1.60	1,110	1,170	■	▲	■	△	▲	■	△	△	▲	▲	■	▲	▲	▲	▲	▲	▲	▲	▲	▲			
	1,650	1.75	1,160	1,220	▲	■	△	△	■	△	△	—	■	■	▲	△	■	▲	■	△	▲	▲	▲	▲			
	1,550	1.85	1,170	1,230	■	■	△	△	■	△	△	—	■	▲	■	△	■	■	△	△	▲	▲	▲	■			
	1,650	2.00	1,210	1,270	△	△	△	—	△	△	—	—	▲	■	△	△	▲	△	△	—	▲	▲	■	▲			
	1,750	2.15	1,260	1,320	△	△	—	—	△	—	—	—	■	△	△	—	△	△	△	—	▲	■	■	■			
HD ²⁾	1,050	1.00	1,000	1,050	▲	▲	▲	▲	▲	▲	▲	▲	▲	▲	▲	▲	▲	▲	▲	▲	▲	▲	▲	▲			
	1,250	1.25	1,140	1,200	▲	▲	▲	■	▲	▲	▲	■	▲	▲	▲	■	▲	▲	▲	■	▲	▲	▲	▲			
	1,400	1.45	1,230	1,290	▲	■	▲	■	■	▲	■	△	▲	▲	■	▲	▲	▲	▲	■	▲	▲	▲	▲			
	1,550	1.60	1,290	1,350	■	▲	■	△	▲	■	△	—	■	■	▲	■	■	▲	■	△	▲	▲	▲	▲			
	1,650	1.75	1,350	1,410	▲	■	△	△	■	△	△	—	■	▲	■	△	▲	■	△	△	▲	▲	▲	■			
	1,550	1.85	1,340	1,400	■	△	△	—	△	△	—	—	▲	▲	△	△	▲	■	△	—	▲	▲	▲	▲			
	1,650	2.00	1,400	1,460	△	△	—	—	△	—	—	—	■	■	△	△	■	△	△	—	▲	■	▲	■			
	1,750	2.15	1,450	1,510	△	△	—	—	—	—	—	—	△	△	△	—	△	△	—	—	▲	■	▲	■			
with counterweight 6.2 t																											
STD ¹⁾	1,050	1.00	870	930	▲	▲	▲	▲	▲	▲	▲	▲	▲	▲	▲	▲	▲	▲	▲	▲	▲	▲	▲	▲			
	1,250	1.25	1,000	1,050	▲	▲	▲	▲	▲	▲	▲	▲	▲	▲	▲	▲	▲	▲	▲	▲	▲	▲	▲	▲			
	1,400	1.45	1,070	1,130	▲	▲	▲	■	▲	▲	■	▲	▲	▲	▲	■	▲	▲	▲	■	▲	▲	▲	▲			
	1,550	1.60	1,110	1,170	▲	▲	■	▲	▲	■	▲	■	▲	▲	▲	■	▲	▲	▲	▲	▲	▲	▲	▲			
	1,650	1.75	1,160	1,220	▲	■	▲	■	■	▲	■	△	▲	▲	■	▲	▲	▲	▲	■	▲	▲	▲	▲			
	1,550	1.85	1,170	1,230	■	▲	■	△	▲	■	△	△	▲	■	■	■	▲	▲	▲	■	▲	▲	▲	▲			
	1,650	2.00	1,210	1,270	▲	■	△	△	■	■	△	—	■	■	▲	△	■	▲	■	△	▲	▲	▲	■			
	1,750	2.15	1,260	1,320	■	△	△	△	△	△	△	—	▲	▲	■	△	▲	■	△	△	▲	▲	■	▲			
HD ²⁾	1,050	1.00	1,000	1,050	▲	▲	▲	▲	▲	▲	▲	▲	▲	▲	▲	▲	▲	▲	▲	▲	▲	▲	▲	▲			
	1,250	1.25	1,140	1,200	▲	▲	▲	■	▲	▲	▲	■	▲	▲	▲	■	▲	▲	▲	■	▲	▲	▲	▲			
	1,400	1.45	1,230	1,290	▲	▲	▲	■	▲	▲	■	■	▲	▲	▲	■	▲	▲	▲	■	▲	▲	▲	▲			
	1,550	1.60	1,290	1,350	▲	■	■	■	■	■	▲	△	▲	▲	■	▲	▲	▲	▲	▲	▲	▲	▲	▲			
	1,650	1.75	1,350	1,410	■	▲	■	△	■	▲	▲	△	▲	▲	■	▲	▲	▲	▲	■	▲	▲	▲	▲			
	1,550	1.85	1,340	1,400	■	▲	■	△	▲	■	△	△	▲	■	▲	■	■	▲	■	△	▲	▲	▲	■			
	1,650	2.00	1,400	1,460	▲	■	△	△	■	△	△	—	■	▲	■	△	▲	■	△	△	▲	▲	▲	■			
	1,750	2.15	1,450	1,510	■	△	△	—	△	△	—	—	▲	■	△	△	■	■	△	—	▲	▲	■	▲			

* Indicated loads are based on ISO 10567, at maximum reach, and may be swung 360° on firm and even ground

¹⁾ Standard bucket with teeth Z 50

²⁾ HD bucket with teeth Z 50

³⁾ Bucket for direct mounting

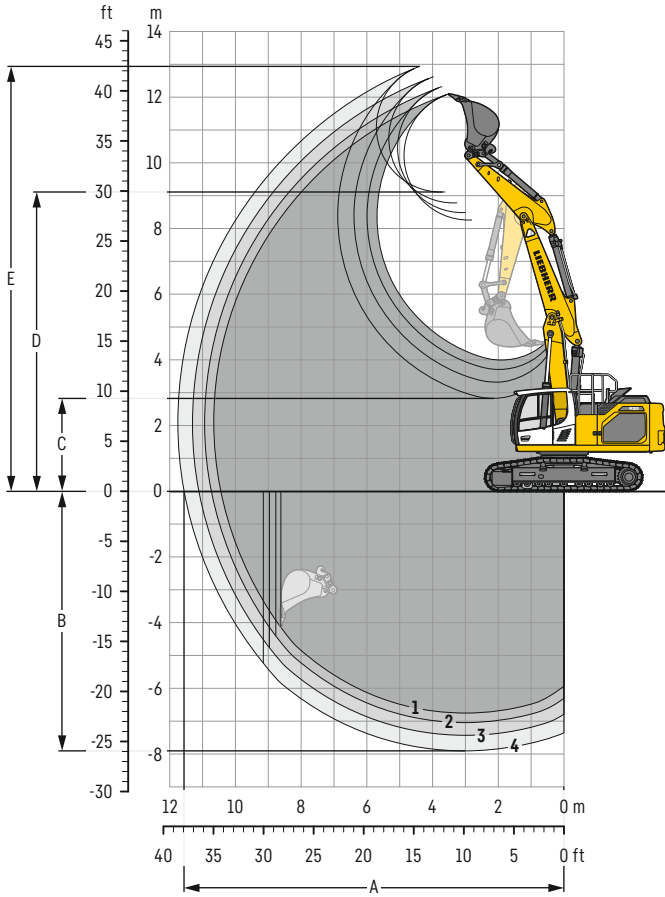
⁴⁾ Bucket for mounting to quick coupler SWA 66 (350 kg)

Other buckets available upon request

Max. material weight ▲ = ≤ 2.0t/m³, ■ = ≤ 1.8t/m³, ▲ = ≤ 1.65t/m³, ■ = ≤ 1.5t/m³, △ = ≤ 1.2t/m³, — = not authorised

Backhoe bucket

with two-piece boom 6.40 m



Digging envelope

with quick coupler		1	2	3	4
Stick length	m	2.50	2.80	3.20	3.70
A Max. reach at ground level	m	10.45	10.73	11.11	11.56
B Max. digging depth	m	6.75	7.05	7.43	7.91
C Min. dumping height	m	4.00	3.71	3.32	2.83
D Max. dumping height	m	8.26	8.49	8.79	9.11
E Max. cutting height	m	12.09	12.32	12.62	12.93

Forces

without quick coupler		1	2	3	4
Stick digging force (ISO 6015)	kN	168	156	142	128
Bucket digging force (ISO 6015)	kN	204	204	204	204
Stick digging force (SAE J1179)	kN	160	149	136	123
Bucket digging force (SAE J1179)	kN	178	178	178	178

Operating weight and ground pressure

The operating weight includes the basic machine with counterweight 5.1t, two-piece boom 6.40 m, stick 3.20 m, quick coupler SWA 66 (350 kg) and bucket 1.60 m³ (1,170 kg).

Undercarriage		NLC				
Pad width	mm	600	700	750	800	900
Weight	kg	31,300	31,650	31,850	32,000	32,350
Ground pressure	kg/cm ²	0.61	0.53	0.50	0.47	0.42

Undercarriage		LC				
Pad width	mm	600	700	750	800	900
Weight	kg	31,400	31,750	31,950	32,100	32,450
Ground pressure	kg/cm ²	0.61	0.53	0.50	0.47	0.42

Undercarriage		LC-V				
Pad width	mm	600	700	750	800	900
Weight	kg	35,400	35,800	36,050	36,250	36,650
Ground pressure	kg/cm ²	0.66	0.57	0.54	0.51	0.46

The operating weight includes the basic machine with counterweight 6.2t, two-piece boom 6.40 m, stick 3.20 m, quick coupler SWA 66 (350 kg) and bucket 1.60 m³ (1,170 kg).

Undercarriage		NLC				
Pad width	mm	600	700	750	800	900
Weight	kg	32,400	32,750	32,950	33,100	33,450
Ground pressure	kg/cm ²	0.63	0.55	0.51	0.48	0.43

Undercarriage		LC				
Pad width	mm	600	700	750	800	900
Weight	kg	32,500	32,850	33,050	33,200	33,550
Ground pressure	kg/cm ²	0.63	0.55	0.51	0.48	0.43

Undercarriage		LC-V				
Pad width	mm	600	700	750	800	900
Weight	kg	36,500	36,900	37,150	37,350	37,750
Ground pressure	kg/cm ²	0.68	0.59	0.55	0.52	0.47

Buckets Machine stability per ISO 10567* (75% of tipping capacity)

Cutting width mm	Capacity ISO 7451 m ³	Weight ³⁾ kg	Weight ⁴⁾ kg	NLC undercarriage (with track pads 600 mm)								LC undercarriage (with track pads 600 mm)								LC-V undercarriage (with track pads 600 mm)								
				Stick length (m)				Stick length (m)				Stick length (m)				Stick length (m)				Stick length (m)								
				without quick coupler				with quick coupler				without quick coupler				with quick coupler				without quick coupler				with quick coupler				
2.50	2.80	3.20	3.70	2.50	2.80	3.20	3.70	2.50	2.80	3.20	3.70	2.50	2.80	3.20	3.70	2.50	2.80	3.20	3.70	2.50	2.80	3.20	3.70					
with counterweight 5.1 t																												
STD ¹⁾	1,050	1.00	870	930	▲	▲	▲	▲	▲	▲	▲	▲	▲	▲	▲	▲	▲	▲	▲	▲	▲	▲	▲	▲	▲	▲	▲	▲
	1,250	1.25	1,000	1,050	▲	▲	▲	■	▲	▲	■	▲	▲	▲	▲	▲	▲	▲	▲	▲	▲	▲	▲	▲	▲	▲	▲	▲
	1,400	1.45	1,070	1,130	▲	▲	■	■	▲	■	▲	△	▲	▲	▲	■	▲	▲	■	▲	▲	▲	▲	▲	▲	▲	▲	▲
	1,550	1.60	1,110	1,170	■	■	■	△	■	▲	△	△	▲	▲	■	▲	▲	■	▲	■	▲	▲	▲	▲	▲	▲	▲	▲
	1,650	1.75	1,160	1,220	▲	■	△	△	■	△	△	—	▲	■	▲	■	■	▲	■	△	▲	▲	▲	▲	▲	▲	▲	■
	1,550	1.85	1,170	1,230	▲	■	△	△	▲	△	△	—	■	▲	■	△	▲	■	△	△	▲	▲	▲	■	▲	▲	▲	■
	1,650	2.00	1,210	1,270	■	△	△	—	△	△	—	—	▲	■	▲	△	▲	△	△	—	▲	▲	▲	■	▲	▲	■	▲
1,750	2.15	1,260	1,320	△	△	—	—	△	—	—	—	■	△	△	—	△	△	△	—	▲	▲	■	▲	▲	■	▲	■	
HD ²⁾	1,050	1.00	1,000	1,050	▲	▲	▲	▲	▲	▲	▲	▲	▲	▲	▲	▲	▲	▲	▲	▲	▲	▲	▲	▲	▲	▲	▲	▲
	1,250	1.25	1,140	1,200	▲	▲	▲	■	▲	▲	■	▲	▲	▲	▲	■	▲	▲	▲	■	▲	▲	▲	▲	▲	▲	▲	▲
	1,400	1.45	1,230	1,290	▲	■	▲	■	■	▲	■	△	▲	▲	▲	▲	▲	▲	■	■	▲	▲	▲	▲	▲	▲	▲	▲
	1,550	1.60	1,290	1,350	■	▲	■	△	▲	■	△	△	▲	■	▲	■	■	■	■	△	▲	▲	▲	▲	▲	▲	▲	▲
	1,650	1.75	1,350	1,410	▲	■	△	△	▲	△	△	—	■	▲	■	△	▲	■	△	△	▲	▲	▲	▲	▲	▲	▲	■
	1,550	1.85	1,340	1,400	■	△	△	—	△	△	—	—	■	▲	■	△	▲	■	△	△	▲	▲	▲	■	▲	▲	■	▲
	1,650	2.00	1,400	1,460	△	△	△	—	△	△	—	—	▲	■	△	△	■	△	△	—	▲	▲	■	▲	▲	▲	■	■
1,750	2.15	1,450	1,510	△	△	—	—	△	—	—	—	■	△	△	—	△	△	—	—	▲	■	▲	■	■	■	▲	■	
with counterweight 6.2 t																												
STD ¹⁾	1,050	1.00	870	930	▲	▲	▲	▲	▲	▲	▲	▲	▲	▲	▲	▲	▲	▲	▲	▲	▲	▲	▲	▲	▲	▲	▲	▲
	1,250	1.25	1,000	1,050	▲	▲	▲	▲	▲	▲	▲	▲	▲	▲	▲	▲	▲	▲	▲	▲	▲	▲	▲	▲	▲	▲	▲	▲
	1,400	1.45	1,070	1,130	▲	▲	▲	■	▲	▲	■	▲	▲	▲	▲	▲	▲	▲	▲	▲	▲	▲	▲	▲	▲	▲	▲	▲
	1,550	1.60	1,110	1,170	▲	▲	■	▲	▲	■	▲	■	▲	▲	▲	■	▲	▲	▲	■	▲	▲	▲	▲	▲	▲	▲	▲
	1,650	1.75	1,160	1,220	▲	■	▲	■	■	▲	■	△	▲	▲	■	▲	▲	▲	■	■	▲	▲	▲	▲	▲	▲	▲	▲
	1,550	1.85	1,170	1,230	■	▲	■	△	■	▲	■	△	▲	▲	■	▲	▲	■	▲	■	▲	▲	▲	▲	▲	▲	▲	▲
	1,650	2.00	1,210	1,270	▲	■	△	△	▲	■	△	△	■	■	▲	■	■	▲	■	△	▲	▲	▲	▲	▲	▲	▲	■
1,750	2.15	1,260	1,320	■	■	△	△	■	△	△	—	■	▲	■	△	▲	■	△	△	▲	▲	▲	■	▲	▲	■	▲	
HD ²⁾	1,050	1.00	1,000	1,050	▲	▲	▲	▲	▲	▲	▲	▲	▲	▲	▲	▲	▲	▲	▲	▲	▲	▲	▲	▲	▲	▲	▲	▲
	1,250	1.25	1,140	1,200	▲	▲	▲	■	▲	▲	▲	■	▲	▲	▲	▲	▲	▲	▲	▲	▲	▲	▲	▲	▲	▲	▲	▲
	1,400	1.45	1,230	1,290	▲	▲	▲	■	▲	▲	■	▲	▲	▲	▲	▲	▲	▲	▲	■	▲	▲	▲	▲	▲	▲	▲	▲
	1,550	1.60	1,290	1,350	▲	▲	■	■	▲	■	▲	△	▲	▲	▲	■	▲	▲	■	▲	▲	▲	▲	▲	▲	▲	▲	▲
	1,650	1.75	1,350	1,410	■	■	▲	△	■	▲	■	△	▲	▲	■	▲	▲	■	▲	■	▲	▲	▲	▲	▲	▲	▲	▲
	1,550	1.85	1,340	1,400	■	▲	■	△	▲	■	△	△	▲	■	▲	■	■	■	▲	△	▲	▲	▲	▲	▲	▲	▲	▲
	1,650	2.00	1,400	1,460	▲	■	△	△	■	△	△	—	■	▲	■	△	■	▲	■	△	▲	▲	▲	■	▲	▲	▲	■
1,750	2.15	1,450	1,510	■	△	△	—	△	△	—	—	▲	■	△	△	▲	■	△	△	▲	▲	▲	■	▲	▲	■	▲	

* Indicated loads are based on ISO 10567, at maximum reach, and may be swung 360° on firm and even ground

¹⁾ Standard bucket with teeth Z 50

²⁾ HD bucket with teeth Z 50

³⁾ Bucket for direct mounting

⁴⁾ Bucket for mounting to quick coupler SWA 66 (350 kg)

Other buckets available upon request

Max. material weight ▲ = ≤ 2.0t/m³, ■ = ≤ 1.8t/m³, ▲ = ≤ 1.65t/m³, ■ = ≤ 1.5t/m³, △ = ≤ 1.2t/m³, — = not authorised

Lift capacities

with mono boom 6.20 m, counterweight 5.1 t and track pads 600 mm

Stick 2.50 m

Under-carriage m	3.0m		4.5m		6.0m		7.5m		9.0m		m	
9.0												
7.5												
6.0					7.3	9.0*				6.5	8.3*	6.4
4.5					7.2	9.3*				5.1	8.1*	7.5
3.0			10.5	12.8*	6.9	10.2*	4.9	8.0		4.4	7.1	8.1
1.5			9.6	15.3*	6.5	11.1	4.7	7.8		4.0	6.6	8.4
0			9.1	16.5*	6.2	10.7	4.6	7.7		3.9	6.5	8.4
-1.5	13.0*	13.0*	8.9	15.0*	6.0	10.4	4.5	7.5		4.0	6.7	8.2
-3.0	15.9*	15.9*	9.1	12.8*	6.1	9.9*				4.4	7.4	7.6
-4.5			8.7*	8.7*						5.3	8.5*	6.7
-6.0										7.4*	7.4*	5.2
9.0					8.0	9.0*				7.1	8.3*	6.4
7.5					7.9	9.3*				5.6	8.1*	7.5
6.0					7.5	10.2*	5.4	8.1		4.8	7.2	8.1
4.5			11.6	12.8*	7.1	11.2	5.2	7.9		4.4	6.7	8.4
3.0			10.7	15.3*	6.8	10.8	5.0	7.7		4.3	6.6	8.4
1.5			10.1	16.5*	6.6	10.6	4.9	7.6		4.4	6.8	8.2
0			10.0	16.2*	6.6	10.6	4.9	7.6		4.9	7.5	7.6
-1.5	13.0*	13.0*	10.0	15.0*	6.6	10.6	4.9	7.6		5.9	8.5*	6.7
-3.0	15.9*	15.9*	10.2	12.8*	6.7	9.9*				7.4*	7.4*	5.2
-4.5			8.7*	8.7*								
-6.0												
9.0					9.0*	9.0*				8.3*	8.3*	6.4
7.5					9.3*	9.3*	6.8	8.2*		6.8	8.1*	7.5
6.0					9.4	10.3*	6.7	8.9*		6.0	8.2*	8.1
4.5			13.1*	13.1*	9.0	11.3*	6.5	9.3*		5.6	8.0	8.4
3.0			13.6	15.4*	8.7	12.1*	6.4	9.2		5.5	7.9	8.4
1.5			13.1	16.5*	8.5	12.2*	6.3	9.1		5.7	8.2	8.2
0			12.9	16.2*	8.5	11.5*	6.3	8.8*		6.2	8.7*	7.6
-1.5	13.8*	13.8*	13.0	14.9*	8.6	9.6*				7.6	8.4*	6.7
-3.0	15.5*	15.5*	12.6*	12.6*						7.2*	7.2*	5.2
-4.5			8.2*	8.2*								
-6.0												

Stick 2.80 m

Under-carriage m	3.0m		4.5m		6.0m		7.5m		9.0m		m	
9.0												
7.5												
6.0					7.4	8.5*						
4.5					7.3	8.9*	5.1	8.2		4.8	7.1*	7.8
3.0			18.5*	18.5*	6.9	9.8*	4.9	8.1		4.1	6.8	8.4
1.5			10.6	12.2*	6.2	10.7	4.5	7.6		3.7	6.2	8.7
0			9.7	14.7*	6.5	11.0*	4.7	7.8		3.8	6.3	8.6
-1.5			9.1	16.2*	6.2	10.7	4.5	7.6		3.7	6.2	8.7
-3.0	12.5*	12.5*	8.8	15.3*	6.0	10.4	4.4	7.5		3.8	6.3	8.4
-4.5	17.1*	17.1*	9.0	13.4*	6.0	10.3*				4.1	6.9	7.9
-6.0	12.1*	12.1*	9.3	9.7*						4.9	8.3*	7.0
9.0										6.9	7.6*	5.6
7.5					8.1	8.5*				6.6	7.3*	6.8
6.0					7.9	8.9*	5.5	8.2*		5.2	7.1*	7.8
4.5			18.5*	18.5*	7.6	9.8*	5.4	8.1		4.5	6.8	8.4
3.0			11.7	12.2*	7.2	11.0*	5.2	7.9		4.2	6.4	8.6
1.5			10.8	14.7*	6.8	10.8	5.0	7.7		4.1	6.2	8.7
0			10.1	16.2*	6.6	10.6	4.9	7.6		4.2	6.4	8.4
-1.5			9.9	16.3*	6.6	10.6	4.9	7.6		4.6	7.0	7.9
-3.0	12.5*	12.5*	9.9	15.3*	6.5	10.5	4.9	7.6		5.4	8.3*	7.0
-4.5	17.1*	17.1*	10.0	13.4*	6.6	10.3*				7.6*	7.6*	5.6
-6.0	12.1*	12.1*	9.7*	9.7*								
9.0										8.0*	8.0*	
7.5					8.5*	8.5*				7.3*	7.3*	6.8
6.0					8.9*	8.9*	6.9	8.3*		6.4	7.1*	7.8
4.5			12.5*	12.5*	9.4	9.9*	6.7	8.6*		5.7	7.2*	8.4
3.0			13.7	14.9*	9.0	11.0*	6.5	9.1*		5.3	7.6*	8.6
1.5			13.1	16.3*	8.6	11.9*	6.3	9.2		5.2	7.5	8.7
0			12.8	16.3*	8.4	12.1*	6.2	9.1		5.4	7.7	8.4
-1.5	13.2*	13.2*	12.8	15.2*	8.4	11.6*	6.2	9.0*		5.9	8.4*	7.9
-3.0	16.7*	16.7*	13.0	13.1*	8.5	10.1*				7.0	8.3*	7.0
-4.5	11.5*	11.5*	9.3*	9.3*						7.4*	7.4*	5.6
-6.0												

Height Can be slewed through 360° In longitudinal position of undercarriage Max. reach * Limited by hydr. capacity

The load values are quoted in tons (t) at stick end (without bucket), and may be swung 360° on firm and even ground. Adjacent values are valid for the undercarriage when in the longitudinal position. Capacities are valid for 600 mm wide track pads. Indicated loads are based on ISO 10567 standard and do not exceed 75% of tipping or 87% of hydraulic capacity (indicated via *). Without bucket cylinder, link and lever the lift capacities will increase by 410 kg. Lifting capacity of the excavator is limited by machine stability and hydraulic capacity.

According to European Standard, EN 474-5: In the European Union excavators have to be equipped with an overload warning device, a load diagram and automatic safety check valves on hoist cylinders and stick cylinder(s), when they are used for lifting operations which require the use of lifting accessories.

Determine maximum load lift from load lift chart displayed in the operator's cab or from load lift chart detailed in the operator's manual supplied with the machine.

Stick 3.20 m

Under-carriage m	3.0m		4.5m		6.0m		7.5m		9.0m		m
9.0									6.9*	6.9*	5.8
7.5									5.4	6.3*	7.2
6.0					7.3	8.4*	5.1	7.8*	4.4	6.1*	8.2
4.5			10.8	11.4*	7.0	9.3*	4.9	8.1	3.9	6.2*	8.7
3.0			9.9	14.0*	6.5	10.5*	4.7	7.8	3.6	5.9	9.0
1.5			9.1	15.8*	6.2	10.7	4.5	7.6	3.5	5.8	9.0
0	6.5*	6.5*	8.8	16.3*	5.9	10.4	4.4	7.4	3.5	5.9	8.8
-1.5	12.0*	12.0*	8.7	15.7*	5.8	10.3	4.3	7.4	3.8	6.4	8.3
-3.0	17.3	18.6*	8.8	14.0*	5.9	10.3			4.4	7.5	7.5
-4.5	14.0*	14.0*	9.1	10.9*	6.1	8.0*			5.9	7.6*	6.2
-6.0											
9.0									6.9*	6.9*	5.8
7.5									5.9	6.3*	7.2
6.0					8.0	8.4*	5.6	7.8*	4.8	6.1*	8.2
4.5			11.4*	11.4*	7.6	9.3*	5.4	8.2	4.2	6.2*	8.7
3.0			11.0	14.0*	7.2	10.5*	5.2	7.9	3.9	6.0	9.0
1.5			10.2	15.8*	6.8	10.8	5.0	7.7	3.8	5.9	9.0
0	6.5*	6.5*	9.8	16.3*	6.6	10.5	4.8	7.5	3.9	6.0	8.8
-1.5	12.0*	12.0*	9.8	15.7*	6.5	10.4	4.8	7.5	4.2	6.5	8.3
-3.0	18.6*	18.6*	9.9	14.0*	6.5	10.5			4.9	7.6	7.5
-4.5	14.0*	14.0*	10.2	10.9*	6.7	8.0*			6.5	7.6*	6.2
-6.0											
9.0									6.8*	6.8*	5.8
7.5									6.3*	6.3*	7.2
6.0					8.4*	8.4*	6.9	7.8*	5.9	6.1*	8.2
4.5	17.0*	17.0*	11.7*	11.7*	9.4*	9.4*	6.7	8.2*	5.3	6.2*	8.7
3.0			13.9	14.2*	9.0	10.6*	6.5	8.8*	5.0	6.6*	9.0
1.5			13.1	15.9*	8.6	11.6*	6.3	9.2	4.9	7.0	9.0
0	7.0*	7.0*	12.8	16.3*	8.4	12.1*	6.2	9.0	5.0	7.2	8.8
-1.5	12.5*	12.5*	12.7	15.5*	8.3	11.8*	6.1	9.0	5.4	7.9	8.3
-3.0	18.3*	18.3*	12.9	13.8*	8.4	10.5*			6.3	8.0*	7.5
-4.5	13.5*	13.5*	10.5*	10.5*	7.6*	7.6*			7.5*	7.5*	6.2
-6.0											

Stick 3.70 m

Under-carriage m	3.0m		4.5m		6.0m		7.5m		9.0m		m		
9.0											5.7*	5.7*	6.5
7.5											4.9	5.3*	7.8
6.0							5.2	6.0*			4.0	5.1*	8.6
4.5							5.2	7.3*			3.6	5.2*	9.2
3.0	11.4*	11.4*			7.1	8.7*	5.0	7.8*	3.7	5.9*	3.6	5.2*	9.2
1.5			10.1	13.1*	6.6	10.0*	4.7	7.9	3.6	5.9	3.3	5.4*	9.4
0	7.6*	7.6*	9.3	15.3*	6.2	10.7	4.5	7.6	3.5	5.8	3.2	5.4	9.5
-1.5	11.6*	11.6*	8.8	16.2*	5.9	10.4	4.3	7.4	3.4	5.7	3.2	5.5	9.2
-3.0	17.0*	17.0*	8.6	15.9*	5.8	10.2	4.3	7.3			3.5	5.9	8.8
-4.5	16.1*	16.1*	8.7	14.6*	5.7	10.2	4.3	7.3			3.9	6.7	8.0
-6.0			8.9	12.1*	5.9	9.1*					5.0	7.6*	6.8
			7.1*	7.1*							6.5*	6.5*	4.9
9.0											5.7*	5.7*	6.5
7.5							5.7	6.0*			5.3*	5.3*	7.8
6.0							5.6	7.3*			4.4	5.1*	8.6
4.5							7.7	8.7*			3.9	5.2*	9.2
3.0	11.4*	11.4*	11.2	13.1*	7.3	10.0*	5.2	8.0	4.0	5.9*	3.6	5.4*	9.4
1.5			10.3	15.3*	6.8	10.9	5.0	7.7	3.8	5.8	3.5	5.4	9.5
0	7.6*	7.6*	9.9	16.2*	6.5	10.5	4.8	7.5	3.7	5.8	3.6	5.5	9.2
-1.5	11.6*	11.6*	9.7	15.9*	6.4	10.3	4.7	7.4			3.8	5.9	8.8
-3.0	17.0*	17.0*	9.7	14.6*	6.4	10.3	4.7	7.4			4.4	6.8	8.0
-4.5	16.1*	16.1*	10.0	12.1*	6.5	9.1*					5.6	7.6*	6.8
-6.0			7.1*	7.1*							6.5*	6.5*	4.9
9.0											5.6*	5.6*	6.5
7.5							6.2*	6.2*			5.2*	5.2*	7.8
6.0							7.0	7.3*			5.1*	5.1*	8.6
4.5							8.8*	8.8*			4.9	5.2*	9.2
3.0	9.7*	9.7*	13.3*	13.3*	9.1	10.1*	6.5	8.5*	5.0	7.1	4.6	5.4*	9.4
1.5	5.3*	5.3*	13.3	15.4*	8.7	11.3*	6.3	9.1*	4.9	7.0	4.5	5.8*	9.5
0	7.9*	7.9*	12.8	16.2*	8.4	11.9*	6.1	9.0	4.8	6.9	4.6	6.5*	9.2
-1.5	12.0*	12.0*	12.6	15.9*	8.2	11.9*	6.0	8.9			5.0	7.2	8.8
-3.0	17.6*	17.6*	12.7	14.5*	8.2	11.0*	6.1	8.4*			5.7	7.7*	8.0
-4.5	15.7*	15.7*	11.8*	11.8*	8.4	8.8*					7.3	7.5*	6.8
-6.0													4.9

Height Can be slewed through 360° In longitudinal position of undercarriage Max. reach * Limited by hydr. capacity

The load values are quoted in tons (t) at stick end (without bucket), and may be swung 360° on firm and even ground. Adjacent values are valid for the undercarriage when in the longitudinal position. Capacities are valid for 600 mm wide track pads. Indicated loads are based on ISO 10567 standard and do not exceed 75% of tipping or 87% of hydraulic capacity (indicated via *). Without bucket cylinder, link and lever the lift capacities will increase by 410 kg. Lifting capacity of the excavator is limited by machine stability and hydraulic capacity.

According to European Standard, EN 474-5: In the European Union excavators have to be equipped with an overload warning device, a load diagram and automatic safety check valves on hoist cylinders and stick cylinder(s), when they are used for lifting operations which require the use of lifting accessories.

Determine maximum load lift from load lift chart displayed in the operator's cab or from load lift chart detailed in the operator's manual supplied with the machine.

Lift capacities

with mono boom 6.20 m, counterweight 6.2 t and track pads 600 mm

Stick 2.50 m

Under-carriage m	3.0m		4.5m		6.0m		7.5m		9.0m		m
9.0											
7.5											
6.0											
4.5											
3.0											
1.5											
0											
-1.5	13.0*	13.0*									
-3.0	15.9*	15.9*									
-4.5											
-6.0											
9.0											
7.5											
6.0											
4.5											
3.0											
1.5											
0											
-1.5	13.0*	13.0*									
-3.0	15.9*	15.9*									
-4.5											
-6.0											
9.0											
7.5											
6.0											
4.5											
3.0											
1.5											
0											
-1.5	13.0*	13.0*									
-3.0	15.9*	15.9*									
-4.5											
-6.0											
9.0											
7.5											
6.0											
4.5											
3.0											
1.5											
0											
-1.5	13.0*	13.0*									
-3.0	15.9*	15.9*									
-4.5											
-6.0											

Stick 2.80 m

Under-carriage m	3.0m		4.5m		6.0m		7.5m		9.0m		m
9.0											
7.5											
6.0											
4.5											
3.0											
1.5											
0											
-1.5	12.5*	12.5*									
-3.0	17.1*	17.1*									
-4.5	12.1*	12.1*									
-6.0											
9.0											
7.5											
6.0											
4.5											
3.0											
1.5											
0											
-1.5	12.5*	12.5*									
-3.0	17.1*	17.1*									
-4.5	12.1*	12.1*									
-6.0											
9.0											
7.5											
6.0											
4.5											
3.0											
1.5											
0											
-1.5	12.5*	12.5*									
-3.0	17.1*	17.1*									
-4.5	12.1*	12.1*									
-6.0											
9.0											
7.5											
6.0											
4.5											
3.0											
1.5											
0											
-1.5	13.2*	13.2*									
-3.0	16.7*	16.7*									
-4.5	11.5*	11.5*									
-6.0											

Height Can be slewed through 360° In longitudinal position of undercarriage Max. reach * Limited by hydr. capacity

The load values are quoted in tons (t) at stick end (without bucket), and may be swung 360° on firm and even ground. Adjacent values are valid for the undercarriage when in the longitudinal position. Capacities are valid for 600 mm wide track pads. Indicated loads are based on ISO 10567 standard and do not exceed 75% of tipping or 87% of hydraulic capacity (indicated via *). Without bucket cylinder, link and lever the lift capacities will increase by 410 kg. Lifting capacity of the excavator is limited by machine stability and hydraulic capacity.

According to European Standard, EN 474-5: In the European Union excavators have to be equipped with an overload warning device, a load diagram and automatic safety check valves on hoist cylinders and stick cylinder(s), when they are used for lifting operations which require the use of lifting accessories.

Determine maximum load lift from load lift chart displayed in the operator's cab or from load lift chart detailed in the operator's manual supplied with the machine.

Stick 3.20 m

Under-carriage m	3.0m		4.5m		6.0m		7.5m		9.0m		m		
9.0										6.9*	6.9*	5.8	
7.5										6.0	6.3*	7.2	
6.0					8.0	8.4*	5.6	7.8*		4.9	6.1*	8.2	
4.5			11.4*	11.4*	7.7	9.3*	5.5	8.2*		4.3	6.2*	8.7	
3.0			10.9	14.0*	7.3	10.5*	5.3	8.6	4.0	6.5	4.0	6.4*	9.0
1.5			10.2	15.8*	6.9	11.6*	5.1	8.3	3.9	6.4	3.9	6.3	9.0
0	6.5*	6.5*	9.9	16.3*	6.6	11.4	4.9	8.2			4.0	6.5	8.8
-1.5	12.0*	12.0*	9.8	15.7*	6.5	11.3	4.9	8.1			4.3	7.0	8.3
-3.0	18.6*	18.6*	9.9	14.0*	6.6	10.7*					5.0	8.0*	7.5
-4.5	14.0*	14.0*	10.2	10.9*	6.8	8.0*					6.6	7.6*	6.2
-6.0													
9.0										6.9*	6.9*	5.8	
7.5										6.3*	6.3*	7.2	
6.0					8.4*	8.4*	6.1	7.8*			5.3	6.1*	8.2
4.5			11.4*	11.4*	8.4	9.3*	6.0	8.2*			4.7	6.2*	8.7
3.0			12.1	14.0*	7.9	10.5*	5.8	8.6	4.4	6.5*	4.4	6.4*	9.0
1.5			11.3	15.8*	7.6	11.6*	5.6	8.4	4.3	6.4	4.3	6.4	9.0
0	6.5*	6.5*	11.0	16.3*	7.3	11.5	5.4	8.2			4.4	6.6	8.8
-1.5	12.0*	12.0*	10.9	15.7*	7.2	11.4	5.3	8.2			4.7	7.1	8.3
-3.0	18.6*	18.6*	11.0	14.0*	7.3	10.7*					5.5	8.0*	7.5
-4.5	14.0*	14.0*	10.9*	10.9*	7.5	8.0*					7.2	7.6*	6.2
-6.0													
9.0										6.8*	6.8*	5.8	
7.5										6.3*	6.3*	7.2	
6.0					8.4*	8.4*	7.5	7.8*			6.1*	6.1*	8.2
4.5	17.0*	17.0*	11.7*	11.7*	9.4*	9.4*	7.3	8.2*			5.8	6.2*	8.7
3.0			14.2*	14.2*	9.8	10.6*	7.1	8.8*	5.5	6.6*	5.4	6.5*	9.0
1.5			14.3	15.9*	9.4	11.6*	6.9	9.3*	5.4	7.2*	5.3	7.0*	9.0
0	7.0*	7.0*	14.0	16.3*	9.2	12.1*	6.8	9.5*			5.5	7.8	8.8
-1.5	12.5*	12.5*	13.9	15.5*	9.1	11.8*	6.7	9.2*			6.0	8.1*	8.3
-3.0	18.3*	18.3*	13.8*	13.8*	9.2	10.5*					7.0	8.0*	7.5
-4.5	13.5*	13.5*	10.5*	10.5*	7.6*	7.6*					7.5*	7.5*	6.2
-6.0													

Stick 3.70 m

Under-carriage m	3.0m		4.5m		6.0m		7.5m		9.0m		m		
9.0											5.7*	5.7*	6.5
7.5											5.3*	5.3*	7.8
6.0							5.8	6.0*			4.5	5.1*	8.6
4.5							5.7	7.3*			4.0	5.2*	9.2
3.0	11.4*	11.4*			7.8	8.7*	5.5	7.8*	4.1	5.9*	3.7	5.4*	9.4
1.5			11.2	13.1*	6.9	11.2*	5.1	8.3	3.9	6.3	3.6	5.8*	9.5
0	7.6*	7.6*	9.9	16.2*	6.6	11.4	4.9	8.1	3.8	6.2	3.7	6.0	9.2
-1.5	11.6*	11.6*	9.7	15.9*	6.5	11.2	4.8	8.0			3.9	6.4	8.8
-3.0	17.0*	17.0*	9.7	14.6*	6.5	11.1*	4.8	8.0			4.5	7.4	8.0
-4.5	16.1*	16.1*	10.0	12.1*	6.6	9.1*					5.7	7.6*	6.8
-6.0			7.1*	7.1*							6.5*	6.5*	4.9
9.0											5.7*	5.7*	6.5
7.5							6.0*	6.0*			5.3*	5.3*	7.8
6.0							6.2	7.3*			4.9	5.1*	8.6
4.5					8.5	8.7*	6.0	7.8*	4.5	5.9*	4.3	5.2*	9.2
3.0	11.4*	11.4*	12.3	13.1*	8.0	10.0*	5.8	8.4*	4.4	6.5	4.1	5.4*	9.4
1.5			11.4	15.3*	7.6	11.2*	5.5	8.4	4.3	6.4	4.0	5.8*	9.5
0	7.6*	7.6*	11.0	16.2*	7.3	11.5	5.4	8.2	4.2	6.3	4.0	6.1	9.2
-1.5	11.6*	11.6*	10.8	15.9*	7.1	11.3	5.3	8.1			4.3	6.5	8.8
-3.0	17.0*	17.0*	10.8	14.6*	7.1	11.1*	5.3	8.1			4.9	7.5	8.0
-4.5	16.1*	16.1*	11.1	12.1*	7.3	9.1*					6.2	7.6*	6.8
-6.0			7.1*	7.1*							6.5*	6.5*	4.9
9.0											5.6*	5.6*	6.5
7.5							6.2*	6.2*			5.2*	5.2*	7.8
6.0							7.3*	7.3*			5.1*	5.1*	8.6
4.5					8.8*	8.8*	7.4	7.8*	5.6	6.1*	5.2*	5.2*	9.2
3.0	9.7*	9.7*	13.3*	13.3*	9.9	10.1*	7.1	8.5*	5.5	7.4*	5.1	5.4*	9.4
1.5	5.3*	5.3*	14.5	15.4*	9.5	11.3*	6.9	9.1*	5.3	7.6	5.0	5.8*	9.5
0	7.9*	7.9*	14.0	16.2*	9.2	11.9*	6.7	9.4*	5.2	7.5	5.1	6.5*	9.2
-1.5	12.0*	12.0*	13.9	15.9*	9.0	11.9*	6.6	9.3*			5.5	7.7*	8.8
-3.0	17.6*	17.6*	13.9	14.5*	9.0	11.0*	6.7	8.4*			6.3	7.7*	8.0
-4.5	15.7*	15.7*	11.8*	11.8*	8.8*	8.8*					7.5*	7.5*	6.8
-6.0													4.9

Height Can be slewed through 360° In longitudinal position of undercarriage Max. reach * Limited by hydr. capacity

The load values are quoted in tons (t) at stick end (without bucket), and may be swung 360° on firm and even ground. Adjacent values are valid for the undercarriage when in the longitudinal position. Capacities are valid for 600 mm wide track pads. Indicated loads are based on ISO 10567 standard and do not exceed 75% of tipping or 87% of hydraulic capacity (indicated via *). Without bucket cylinder, link and lever the lift capacities will increase by 410 kg. Lifting capacity of the excavator is limited by machine stability and hydraulic capacity.

According to European Standard, EN 474-5: In the European Union excavators have to be equipped with an overload warning device, a load diagram and automatic safety check valves on hoist cylinders and stick cylinder(s), when they are used for lifting operations which require the use of lifting accessories.

Determine maximum load lift from load lift chart displayed in the operator's cab or from load lift chart detailed in the operator's manual supplied with the machine.

Lift capacities

with mono boom straight 6.50 m, counterweight 5.1 t and track pads 600 mm

Stick 2.50 m

Under-carriage m	3.0m		4.5m		6.0m		7.5m		9.0m		m
10.5											
9.0											
7.5											
6.0					7.3	9.7*					8.5
4.5					11.1	12.2*					9.4*
3.0					9.3	15.2*					8.5
1.5					10.2	14.3*					6.9
0					6.7	10.9*					7.9
-1.5					4.8	7.9					8.5
-3.0					3.7	6.1					8.8
-4.5					3.6	6.0					8.8
10.5											
9.0											
7.5											
6.0											
4.5											
3.0											
1.5											
0											
-1.5											
-3.0											
-4.5											
10.5											
9.0											
7.5											
6.0											
4.5											
3.0											
1.5											
0											
-1.5											
-3.0											
-4.5											
10.5											
9.0											
7.5											
6.0											
4.5											
3.0											
1.5											
0											
-1.5											
-3.0											
-4.5											

Stick 2.80 m

Under-carriage m	3.0m		4.5m		6.0m		7.5m		9.0m		m
10.5											
9.0											
7.5											
6.0											
4.5											
3.0											
1.5											
0											
-1.5											
-3.0											
-4.5											
10.5											
9.0											
7.5											
6.0											
4.5											
3.0											
1.5											
0											
-1.5											
-3.0											
-4.5											
10.5											
9.0											
7.5											
6.0											
4.5											
3.0											
1.5											
0											
-1.5											
-3.0											
-4.5											

Height Can be slewed through 360° In longitudinal position of undercarriage Max. reach * Limited by hydr. capacity

The load values are quoted in tons (t) at stick end (without bucket), and may be swung 360° on firm and even ground. Adjacent values are valid for the undercarriage when in the longitudinal position. Capacities are valid for 600 mm wide track pads. Indicated loads are based on ISO 10567 standard and do not exceed 75% of tipping or 87% of hydraulic capacity (indicated via *). Without bucket cylinder, link and lever the lift capacities will increase by 410 kg. Lifting capacity of the excavator is limited by machine stability and hydraulic capacity.

According to European Standard, EN 474-5: In the European Union excavators have to be equipped with an overload warning device, a load diagram and automatic safety check valves on hoist cylinders and stick cylinder(s), when they are used for lifting operations which require the use of lifting accessories.

Determine maximum load lift from load lift chart displayed in the operator's cab or from load lift chart detailed in the operator's manual supplied with the machine.

Stick 3.20 m

Under-carriage m	3.0m		4.5m		6.0m		7.5m		9.0m		m
10.5											
9.0											6.5 6.9*
7.5											6.4
6.0					7.4 8.0*						4.8 6.3*
4.5					7.4 8.6*	5.1 7.3*					7.8
3.0					7.2 9.3*	5.0 8.2					3.9 6.1*
1.5					6.8 10.2*	4.8 8.0					8.6
0					6.4 10.9	4.6 7.7					9.2
-1.5			10.5 13.0*		6.8 10.2*	4.8 8.0	3.6 5.9				3.5 5.8
-3.0			9.5 15.2*		6.4 10.9	4.6 7.7	3.5 5.8				9.4
-4.5			8.6 15.1*		5.7 10.1	4.2 7.3	3.3 5.7				9.5
			8.6 14.4*		6.0 10.5	4.4 7.5	3.4 5.7				9.2
			5.8 10.2		4.3 7.3	3.3 5.7	3.2 5.5				9.2
			8.6 14.4*		5.7 10.1	4.2 7.3	3.5 5.9				8.8
			9.1* 9.1*		4.3 7.3		3.2 5.5				8.8
			14.4* 14.4*		4.3 7.3		4.0 6.4*				8.0
			8.5* 8.5*		6.0 6.6*		5.1 5.2*				6.8

Stick 3.70 m

Under-carriage m	3.0m		4.5m		6.0m		7.5m		9.0m		m
10.5											
9.0											6.7* 6.7*
7.5											5.2
6.0											6.7* 6.7*
4.5											5.2
3.0											5.6 5.7*
1.5											4.3 5.3*
0											8.3
-1.5											3.6 5.1*
-3.0											9.1
-4.5											9.6
			17.3* 17.3*								9.9
			10.8 11.4*								9.9
			6.9 9.7*								9.9
			4.9 8.0								9.9
			8.9 15.9*								9.7
			4.9* 4.9*								9.7
			8.6 16.0*								9.2
			5.7 10.2								8.5
			8.5 15.0*								7.4
			14.1* 14.1*								9.7
			8.5 13.0*								8.5
			5.6 10.1								7.4
			4.2 7.2								9.1
			11.9* 11.9*								9.1
			8.8 9.9*								9.1
			5.8 7.8*								9.1
			7.2* 7.2*								9.1
			7.3* 7.3*								9.1
			5.6 6.9*								9.1
			7.8* 7.8*								9.1
			5.5 7.7*								9.1
			7.6 9.7*								9.1
			4.0 5.6*								9.1
			17.3* 17.3*								9.1
			11.4* 11.4*								9.1
			7.6 9.7*								9.1
			5.3 8.1								9.1
			4.0 6.0								9.1
			10.8 14.4*								9.1
			7.1 10.8*								9.1
			5.1 7.8								9.1
			3.9 5.9								9.1
			10.0 15.9*								9.1
			6.7 10.7								9.1
			4.9 7.6								9.1
			4.9* 4.9*								9.1
			9.6 16.0*								9.1
			6.4 10.3								9.1
			4.7 7.4								9.1
			9.0* 9.0*								9.1
			6.2 10.2								9.1
			4.6 7.3								9.1
			14.1* 14.1*								9.1
			9.6 13.0*								9.1
			6.3 10.2*								9.1
			4.6 7.3								9.1
			11.9* 11.9*								9.1
			9.8 9.9*								9.1
			6.4 7.8*								9.1
			7.2* 7.2*								9.1
			7.3* 7.3*								9.1
			5.6 6.9*								9.1
			7.8* 7.8*								9.1
			5.5 7.7*								9.1
			7.6 9.7*								9.1
			4.0 5.6*								9.1
			17.3* 17.3*								9.1
			11.4* 11.4*								9.1
			7.6 9.7*								9.1
			5.3 8.1								9.1
			4.0 6.0								9.1
			10.8 14.4*								9.1
			7.1 10.8*								9.1
			5.1 7.8								9.1
			3.9 5.9								9.1
			10.0 15.9*								9.1
			6.7 10.7								9.1
			4.9 7.6								9.1
			4.9* 4.9*								9.1
			9.6 16.0*								9.1
			6.4 10.3								9.1
			4.7 7.4								9.1
			9.0* 9.0*								9.1
			6.2 10.2								9.1
			4.6 7.3								9.1
			14.1* 14.1*								9.1
			9.6 13.0*								9.1
			6.3 10.2*								9.1
			4.6 7.3								9.1
			11.9* 11.9*								9.1
			9.8 9.9*								9.1
			6.4 7.8*								9.1
			7.2* 7.2*								9.1
			7.3* 7.3*								9.1
			5.6 6.9*								9.1
			7.8* 7.8*								9.1
			5.5 7.7*								9.1
			7.6 9.7*								9.1
			4.0 5.6*								9.1
			17.3* 17.3*								9.1
			11.4* 11.4*								9.1
			7.6 9.7*								9.1
			5.3 8.1								9.1
			4.0 6.0								9.1
			10.8 14.4*								9.1
			7.1 10.8*								9.1
			5.1 7.8								9.1
			3.9 5.9								9.1
			10.0 15.9*								9.1
			6.7 10.7								9.1
			4.9 7.6								9.1
			4.9* 4.9*								9.1
			9.6 16.0*								9.1
			6.4 10.3								9.1
			4.7 7.4								9.1
			9.0* 9.0*								9.1
			6.2 10.2								9.1
			4.6 7.3								9.1
			14.1* 14.1*								9.1
			9.6 13.0*								9.1
			6.3 10.2*								9.1
			4.6 7.3								9.1
			11.9* 11.9*								9.1
			9.8 9.9*								9.1
			6.4 7.8*								9.1
			7.2* 7.2*								9.1

Lift capacities

with mono boom straight 6.50 m, counterweight 6.2 t and track pads 600 mm

Stick 2.50 m

Under-carriage m	3.0m		4.5m		6.0m		7.5m		9.0m		m
10.5											
9.0											
7.5											
6.0					8.0	9.7*					9.3 9.4* 5.4
4.5					12.1 12.2*	7.8 10.1*	5.5 8.8				6.3 8.4* 6.9
3.0					11.2 14.3*	7.4 10.9*	5.4 8.7				5.1 8.1* 7.9
1.5					10.3 15.2*	7.0 11.8*	5.2 8.4				4.1 6.7 8.8
0					9.4* 9.4*	6.7 11.5	5.0 8.3				4.1 6.6 8.8
-1.5	9.1* 9.1*				9.8 13.6*	6.6 11.3	4.9 8.1				4.2 6.8 8.6
-3.0	11.0* 11.0*				9.9 13.3*	6.6 10.7*	4.9 8.2				4.5 7.4* 8.0
-4.5					10.1 10.6*	6.7 8.6*					5.4 6.5* 7.2
10.5											
9.0											
7.5											
6.0						8.7 9.7*					9.4* 9.4* 5.4
4.5						12.2* 12.2*	6.0 8.9				6.8 8.4* 6.9
3.0						12.4 14.3*	5.9 8.7				5.5 8.1* 7.9
1.5						11.4 15.2*	5.7 8.5				4.9 7.2 8.5
0						9.4* 9.4*	4.4 6.8				4.5 6.8 8.8
-1.5	9.1* 9.1*					10.9 13.6*	4.6 6.9				4.6 6.9 8.6
-3.0	11.0* 11.0*					11.0 13.3*	5.0 7.4*				5.0 7.4* 8.0
-4.5						10.6* 10.6*	5.9 6.5*				5.9 6.5* 7.2
10.5											
9.0											
7.5											
6.0											
4.5											
3.0											
1.5											
0											
-1.5	9.1* 9.1*										
-3.0	11.0* 11.0*										
-4.5											

Stick 2.80 m

Under-carriage m	3.0m		4.5m		6.0m		7.5m		9.0m		m
10.5											
9.0											
7.5											
6.0											
4.5											
3.0											
1.5											
0											
-1.5	9.3* 9.3*										
-3.0	12.5* 12.5*										
-4.5											
10.5											
9.0											
7.5											
6.0											
4.5											
3.0											
1.5											
0											
-1.5	9.3* 9.3*										
-3.0	12.5* 12.5*										
-4.5											
10.5											
9.0											
7.5											
6.0											
4.5											
3.0											
1.5											
0											
-1.5	9.3* 9.3*										
-3.0	12.5* 12.5*										
-4.5											

Height Can be slewed through 360° In longitudinal position of undercarriage Max. reach * Limited by hydr. capacity

The load values are quoted in tons (t) at stick end (without bucket), and may be swung 360° on firm and even ground. Adjacent values are valid for the undercarriage when in the longitudinal position. Capacities are valid for 600 mm wide track pads. Indicated loads are based on ISO 10567 standard and do not exceed 75% of tipping or 87% of hydraulic capacity (indicated via *). Without bucket cylinder, link and lever the lift capacities will increase by 410 kg. Lifting capacity of the excavator is limited by machine stability and hydraulic capacity.

According to European Standard, EN 474-5: In the European Union excavators have to be equipped with an overload warning device, a load diagram and automatic safety check valves on hoist cylinders and stick cylinder(s), when they are used for lifting operations which require the use of lifting accessories.

Determine maximum load lift from load lift chart displayed in the operator's cab or from load lift chart detailed in the operator's manual supplied with the machine.

Stick 3.20 m

Under-carriage m	3.0m		4.5m		6.0m		7.5m		9.0m		m
10.5											
9.0										6.9*	6.9*
7.5										5.3	6.3*
6.0										4.4	6.1*
4.5											
3.0											
1.5											
0											
-1.5	9.1*	9.1*									
-3.0	14.4*	14.4*									
-4.5											
10.5											
9.0										6.9*	6.9*
7.5										5.8	6.3*
6.0										4.8	6.1*
4.5											
3.0											
1.5											
0											
-1.5	9.1*	9.1*									
-3.0	14.4*	14.4*									
-4.5											
10.5											
9.0										6.8*	6.8*
7.5										6.3*	6.3*
6.0										5.9	6.1*
4.5											
3.0											
1.5											
0											
-1.5	9.6*	9.6*									
-3.0	14.0*	14.0*									
-4.5											

Stick 3.70 m

Under-carriage m	3.0m		4.5m		6.0m		7.5m		9.0m		m
10.5											
9.0											
7.5											
6.0											
4.5											
3.0											
1.5											
0											
-1.5	4.9*	4.9*									
-3.0	14.1*	14.1*									
-4.5	11.9*	11.9*									
10.5											
9.0											
7.5											
6.0											
4.5											
3.0											
1.5											
0											
-1.5	4.9*	4.9*									
-3.0	14.1*	14.1*									
-4.5	11.9*	11.9*									
10.5											
9.0											
7.5											
6.0											
4.5											
3.0											
1.5											
0											
-1.5	9.0*	9.0*									
-3.0	14.1*	14.1*									
-4.5	11.9*	11.9*									
10.5											
9.0											
7.5											
6.0											
4.5											
3.0											
1.5											
0											
-1.5	5.3*	5.3*									
-3.0	14.7*	14.7*									
-4.5	11.4*	11.4*									

Height Can be slewed through 360° In longitudinal position of undercarriage Max. reach * Limited by hydr. capacity

The load values are quoted in tons (t) at stick end (without bucket), and may be swung 360° on firm and even ground. Adjacent values are valid for the undercarriage when in the longitudinal position. Capacities are valid for 600 mm wide track pads. Indicated loads are based on ISO 10567 standard and do not exceed 75% of tipping or 87% of hydraulic capacity (indicated via *). Without bucket cylinder, link and lever the lift capacities will increase by 410 kg. Lifting capacity of the excavator is limited by machine stability and hydraulic capacity.

According to European Standard, EN 474-5: In the European Union excavators have to be equipped with an overload warning device, a load diagram and automatic safety check valves on hoist cylinders and stick cylinder(s), when they are used for lifting operations which require the use of lifting accessories.

Determine maximum load lift from load lift chart displayed in the operator's cab or from load lift chart detailed in the operator's manual supplied with the machine.

Stick 3.20 m

Under-carriage m	3.0m		4.5m		6.0m		7.5m		9.0m		m
10.5									8.8*	8.8*	4.0
9.0			8.8*	8.8*					6.9	7.0*	6.3
7.5			8.3*	8.3*	7.7	8.6*	5.1	6.8*	4.9	6.3*	7.6
6.0			9.4*	9.4*	7.7	9.5*	5.2	8.3	4.0	6.1*	8.5
4.5	20.9	21.4*	11.3	14.3*	7.6	11.1*	5.2	8.3	3.6	6.0	9.0
3.0	20.0	20.7*	11.1*	15.9*	7.2	11.2	5.0	8.2	3.5	5.9	9.3
1.5	18.7	19.7*	10.1	16.2*	6.7	11.1	4.8	8.0	3.4	5.8	9.3
0	17.6	19.3*	9.4	16.1*	6.3	10.9	4.5	7.7	3.3	5.7	9.1
-1.5	17.2	24.0*	9.0	16.3*	6.0	10.7	4.3	7.5			8.6
-3.0	17.3	23.0*	9.0	15.6*	5.9	10.5	4.3	6.4*	4.1	4.7*	7.8
-4.5	17.8	18.7*	9.1	11.7*	5.9*	5.9*			4.1*	4.1*	6.3
10.5									8.8*	8.8*	4.0
9.0			8.8*	8.8*	7.7*	7.7*			7.0*	7.0*	6.3
7.5			8.3*	8.3*	8.3	8.6*	5.6	6.8*	5.4	6.3*	7.6
6.0			9.4*	9.4*	8.3	9.5*	5.7	8.4	4.4	6.1*	8.5
4.5	21.4*	21.4*	12.3	14.3*	8.2	11.1*	5.7	8.4	3.9	6.0	9.0
3.0	20.7*	20.7*	11.9	15.9*	7.8	11.3	5.5	8.3	3.9	6.0	9.3
1.5	19.7*	19.7*	11.2	16.2*	7.3	11.2	5.3	8.1	3.8	5.9	9.3
0	19.3*	19.3*	10.5	16.1*	6.9	11.1	5.0	7.8	3.7	5.8	9.1
-1.5	19.8	24.0*	10.1	16.3*	6.7	10.8	4.8	7.5	3.9	5.8*	8.6
-3.0	19.9	23.0*	10.0	15.6*	6.6	10.6	4.7	6.4*	4.5	4.7*	7.8
-4.5	18.7*	18.7*	10.1	11.7*	5.9*	5.9*			4.1*	4.1*	6.3
10.5									8.5*	8.5*	4.0
9.0			8.7*	8.7*	8.0*	8.0*			6.9*	6.9*	6.3
7.5			8.3*	8.3*	8.7*	8.7*	6.9	7.1*	6.3*	6.3*	7.6
6.0			9.7*	9.7*	9.7*	9.7*	7.1	8.9*	5.5	6.1*	8.5
4.5	21.5*	21.5*	14.5*	14.5*	9.7	11.2*	7.0	9.3*	5.0	6.5*	9.0
3.0	20.7*	20.7*	14.3	16.0*	9.6	11.8*	6.9	9.4	4.9	7.1	9.3
1.5	19.2*	19.2*	14.1	16.2*	9.2	12.0*	6.6	9.3	4.8	7.0	9.3
0	19.6*	19.6*	13.5	16.1*	8.8	11.9*	6.3	9.3	4.7	6.8*	9.1
-1.5	24.6*	24.6*	13.1	16.3*	8.6	12.0*	6.1	9.0*	5.1	5.8*	8.6
-3.0	22.7*	22.7*	13.0	15.5*	8.4	10.9*	5.9*	5.9*	4.6*	4.6*	7.8
-4.5	18.1*	18.1*	11.0*	11.0*	5.0*	5.0*			4.3*	4.3*	6.3

Stick 3.70 m

Under-carriage m	3.0m		4.5m		6.0m		7.5m		9.0m		m		
10.5											6.9*	6.9*	4.9
9.0			7.7*	7.7*							5.8*	5.8*	6.9
7.5					7.2*	7.2*					4.4	5.3*	8.1
6.0					7.3*	7.3*	5.3	6.8*			3.7	5.1*	9.0
4.5	13.8*	13.8*	11.2*	11.2*	7.7	8.0*	5.4	7.6*			3.3	5.2*	9.5
3.0	20.1	21.0*	11.1	15.4*	7.3	11.2	5.1	8.2	3.6	6.0	3.0	5.2	9.7
1.5	19.4	21.6*	10.3	16.1*	6.8	11.1	4.8	8.0	3.5	5.8	2.9	5.1	9.8
0	17.8	20.2*	9.5	16.0*	6.3	11.0	4.6	7.8	3.3	5.7	3.0	5.2	9.6
-1.5	17.2	22.7*	9.0	16.1*	6.0	10.7	4.3	7.5	3.2	5.6	3.2	5.5	9.1
-3.0	17.1	23.8*	8.9	15.9*	5.9	10.5	4.2	7.3			3.6	4.8*	8.3
-4.5	17.5	20.6*	9.0	13.7*	5.8	8.4*					3.5*	3.5*	7.2
10.5			7.7*	7.7*							6.9*	6.9*	4.9
9.0					7.2*	7.2*					5.8*	5.8*	6.9
7.5					7.3*	7.3*	5.8	6.8*			4.9	5.3*	8.1
6.0					7.3*	7.3*	5.8	7.6*			4.1	5.1*	9.0
4.5	13.8*	13.8*	11.2*	11.2*	8.0*	8.0*	5.8	8.4	4.0	6.1	3.6	5.2*	9.5
3.0	21.0*	21.0*	11.9	15.4*	8.0	11.3	5.6	8.2	4.0	6.0	3.4	5.2	9.7
1.5	21.6*	21.6*	11.4	16.1*	7.4	11.1	5.3	8.1	3.8	5.9	3.3	5.1	9.8
0	20.2*	20.2*	10.6	16.0*	7.0	11.1	5.1	7.9	3.7	5.8	3.3	5.2	9.6
-1.5	19.8	22.7*	10.1	16.1*	6.7	10.8	4.8	7.6	3.6	5.7	3.6	5.6	9.1
-3.0	19.7	23.8*	9.9	15.9*	6.5	10.6	4.7	7.4			4.0	4.8*	8.3
-4.5	20.1	20.6*	10.0	13.7*	6.5	8.4*					3.5*	3.5*	7.2
10.5											6.7*	6.7*	4.9
9.0					7.2*	7.2*					5.7*	5.7*	6.9
7.5					7.4*	7.4*	6.9*	6.9*			5.3*	5.3*	8.1
6.0					7.5*	7.5*	7.1	7.7*	5.1	5.3*	5.1	5.1*	9.0
4.5	18.6*	18.6*	12.0*	12.0*	9.7	10.3*	7.1	9.0*	5.1	7.0*	4.6	5.2*	9.5
3.0	21.0*	21.0*	14.3	15.5*	9.5	11.5*	6.9	9.3*	5.0	7.2	4.3	5.3*	9.7
1.5	21.7*	21.7*	14.1	16.1*	9.3	11.9*	6.7	9.3	4.9	7.1	4.2	5.7*	9.8
0	20.2*	20.2*	13.6	16.0*	8.8	11.8*	6.4	9.3	4.7	6.9	4.3	6.2*	9.6
-1.5	23.1*	23.1*	13.1	16.1*	8.5	11.9*	6.1	9.1	4.7	5.9*	4.6	5.7*	9.1
-3.0	23.6*	23.6*	12.9	15.8*	8.4	11.6*	6.0	7.7*			4.7*	4.7*	8.3
-4.5	20.1*	20.1*	13.0	13.2*	7.9*	7.9*					3.6*	3.6*	7.2



Height



Can be slewed through 360°



In longitudinal position of undercarriage



Max. reach

* Limited by hydr. capacity

The load values are quoted in tons (t) at stick end (without bucket), and may be swung 360° on firm and even ground. Adjacent values are valid for the undercarriage when in the longitudinal position. Capacities are valid for 600 mm wide track pads with adjusting cylinder in optimal position. Indicated loads are based on ISO 10567 standard and do not exceed 75% of tipping or 87% of hydraulic capacity (indicated via *). Without bucket cylinder, link and lever the lift capacities will increase by 410 kg. Lifting capacity of the excavator is limited by machine stability and hydraulic capacity. According to European Standard, EN 474-5: In the European Union excavators have to be equipped with an overload warning device, a load diagram and automatic safety check valves on hoist cylinders and stick cylinder(s), when they are used for lifting operations which require the use of lifting accessories. Determine maximum load lift from load lift chart displayed in the operator's cab or from load lift chart detailed in the operator's manual supplied with the machine.

Lift capacities

with two-piece boom 6.40 m, counterweight 6.2 t and track pads 600 mm

Stick 2.50 m

Under-carriage m	3.0m		4.5m		6.0m		7.5m		9.0m		m
10.5											
9.0			11.3*	11.3*					9.5*	9.5*	5.2
7.5			11.4*	11.4*					6.5	8.4*	6.8
6.0	13.6*	13.6*	12.5	13.3*	8.3	11.1*	5.6	8.9	5.2	8.1*	7.8
4.5	20.9*	20.9*	12.2	15.3*	8.2	11.7*	5.6	8.9	4.5	7.3	8.4
3.0	20.9*	20.9*	11.8	16.4*	7.7	12.0	5.4	8.8	4.2	6.9	8.6
1.5	13.5*	13.5*	10.9	16.3*	7.3	11.9	5.2	8.6	4.1	6.7	8.7
0	19.1*	19.1*	10.4	16.4*	7.0	11.9	5.0	8.3	4.2	7.0	8.4
-1.5	19.4	24.0*	10.2	16.3*	6.8	11.7	4.9	8.0*	4.6	6.0*	7.9
-3.0	19.7	21.3*	10.2	14.8*	6.7	9.4*			4.4*	4.4*	7.0
-4.5	13.6*	13.6*	7.2*	7.2*					6.0*	6.0*	4.8
10.5											
9.0			11.3*	11.3*					9.5*	9.5*	5.2
7.5			11.4*	11.4*	8.9	10.9*			7.1	8.4*	6.8
6.0	13.6*	13.6*	13.3*	13.3*	9.0	11.1*	6.1	9.0	5.7	8.1*	7.8
4.5	20.9*	20.9*	13.1	15.3*	8.9	11.7*	6.1	9.0	4.9	7.4	8.4
3.0	20.9*	20.9*	12.9	16.4*	8.5	12.1	5.9	8.9	4.6	6.9	8.6
1.5	13.5*	13.5*	12.1	16.3*	8.0	12.0	5.7	8.7	4.5	6.8	8.7
0	19.1*	19.1*	11.5	16.4*	7.7	12.0	5.5	8.4	4.6	7.0*	8.4
-1.5	22.2	24.0*	11.3	16.3*	7.5	11.8	5.4	8.0*	5.1	6.0*	7.9
-3.0	21.3*	21.3*	11.4	14.8*	7.4	9.4*			4.4*	4.4*	7.0
-4.5	13.6*	13.6*	7.2*	7.2*					6.0*	6.0*	4.8
10.5											
9.0			11.3*	11.3*					9.3*	9.3*	5.2
7.5			11.5*	11.5*	10.7	10.9*			8.4*	8.4*	6.8
6.0	15.0*	15.0*	13.7*	13.7*	10.6	11.1*	7.5	9.5*	6.9	8.1*	7.8
4.5	20.7*	20.7*	15.5*	15.5*	10.4	11.7*	7.5	9.6*	6.1	8.1*	8.4
3.0	20.3*	20.3*	15.2	16.4*	10.3	12.1*	7.3	9.6*	5.7	8.1*	8.6
1.5	13.8*	13.8*	15.2	16.3*	9.9	12.1*	7.1	9.6*	5.6	7.6*	8.7
0	19.8*	19.8*	14.6	16.4*	9.6	12.1*	6.9	9.5*	5.8	6.9*	8.4
-1.5	23.8*	23.8*	14.4	16.3*	9.4	12.0*	6.8	7.7*	5.9*	5.9*	7.9
-3.0	21.0*	21.0*	14.5	14.6*	8.9*	8.9*			4.2*	4.2*	7.0
-4.5	12.1*	12.1*							6.8*	6.8*	4.8

Stick 2.80 m

Under-carriage m	3.0m		4.5m		6.0m		7.5m		9.0m		m
10.5											
9.0			10.2*	10.2*							8.2*
7.5			10.0*	10.0*	8.3	9.9*					6.0
6.0	10.1*	10.1*	11.6*	11.6*	8.4	10.8*	5.6	9.0			4.9
4.5	21.5*	21.5*	12.2	14.9*	8.2	11.4*	5.6	8.9			4.3
3.0	20.7*	20.7*	11.9	16.2*	7.8	12.0	5.5	8.8			4.0
1.5	16.2*	16.2*	11.0	16.2*	7.3	11.8	5.3	8.6			3.9
0	19.1*	19.1*	10.4	16.3*	7.0	11.9	5.0	8.4			4.0
-1.5	19.3	24.4*	10.1	16.3*	6.8	11.7	4.9	8.2			4.3
-3.0	19.5	22.1*	10.1	15.2*	6.7	10.3*					4.6*
-4.5	16.2*	16.2*	9.4*	9.4*							5.0*
10.5											
9.0			10.2*	10.2*							8.2*
7.5			10.0*	10.0*	9.0	9.9*					6.6
6.0	10.1*	10.1*	11.6*	11.6*	9.0	10.8*	6.2	9.1			5.3
4.5	21.5*	21.5*	13.1	14.9*	8.8	11.4*	6.1	9.0			4.7
3.0	20.7*	20.7*	12.8	16.2*	8.5	12.0*	6.0	8.9			4.4
1.5	16.2*	16.2*	12.2	16.2*	8.0	11.9	5.8	8.7			4.3
0	19.1*	19.1*	11.5	16.3*	7.7	11.9	5.5	8.5			4.4
-1.5	22.1	24.4*	11.3	16.3*	7.5	11.8	5.4	8.3			4.8
-3.0	22.1*	22.1*	11.3	15.2*	7.4	10.3*					4.6*
-4.5	16.2*	16.2*	9.4*	9.4*							5.0*
10.5											
9.0			10.1*	10.1*							10.6*
7.5			10.0*	10.0*	10.0*	10.0*					8.1*
6.0	10.9*	10.9*	11.9*	11.9*	10.6	10.9*	7.6	9.3*			7.4*
4.5	21.3*	21.3*	15.1*	15.1*	10.4	11.5*	7.5	9.4*			6.5
3.0	20.8*	20.8*	15.2	16.3*	10.3	12.0*	7.4	9.6*			5.8
1.5	16.2*	16.2*	15.1	16.2*	10.0	12.0*	7.1	9.5*			5.4
0	19.6*	19.6*	14.6	16.3*	9.6	12.0*	6.9	9.5*			5.5
-1.5	24.3*	24.3*	14.4	16.3*	9.4	12.1*	6.8	8.5*			5.9*
-3.0	21.8*	21.8*	14.4	15.0*	9.3	10.0*					4.4*
-4.5	15.0*	15.0*	8.5*	8.5*							5.3*

Height Can be slewed through 360° In longitudinal position of undercarriage Max. reach * Limited by hydr. capacity

The load values are quoted in tons (t) at stick end (without bucket), and may be swung 360° on firm and even ground. Adjacent values are valid for the undercarriage when in the longitudinal position. Capacities are valid for 600 mm wide track pads with adjusting cylinder in optimal position. Indicated loads are based on ISO 10567 standard and do not exceed 75% of tipping or 87% of hydraulic capacity (indicated via *). Without bucket cylinder, link and lever the lift capacities will increase by 410 kg. Lifting capacity of the excavator is limited by machine stability and hydraulic capacity.

According to European Standard, EN 474-5: In the European Union excavators have to be equipped with an overload warning device, a load diagram and automatic safety check valves on hoist cylinders and stick cylinder(s), when they are used for lifting operations which require the use of lifting accessories.

Determine maximum load lift from load lift chart displayed in the operator's cab or from load lift chart detailed in the operator's manual supplied with the machine.

Stick 3.20 m

Under-carriage m	3.0m		4.5m		6.0m		7.5m		9.0m		m
10.5									8.8*	8.8*	4.0
9.0									7.0*	7.0*	6.3
7.5			8.8*	8.8*					5.5	6.3*	7.6
6.0			9.4*	9.4*	8.4	8.6*	5.6	6.8*	4.5	6.1*	8.5
4.5	21.4*	21.4*	12.2	14.3*	8.2	11.1*	5.7	8.9	4.0	6.1*	9.0
3.0	20.7*	20.7*	11.9	15.9*	7.9	11.8*	5.6	8.8	4.0	6.5	9.3
1.5	19.7*	19.7*	11.1	16.2*	7.4	11.8	5.3	8.7	3.9	6.4	9.3
0	19.3*	19.3*	10.4	16.1*	7.0	11.8	5.1	8.4	3.8	6.3	9.1
-1.5	19.2	24.0*	10.1	16.3*	6.8	11.6	4.9	8.2			8.6
-3.0	19.3	23.0*	10.0	15.6*	6.6	11.1*	4.8	6.4*			7.8
-4.5	18.7*	18.7*	10.1	11.7*	5.9*	5.9*			4.1*	4.1*	6.3

Stick 3.70 m

Under-carriage m	3.0m		4.5m		6.0m		7.5m		9.0m		m		
10.5											6.9*	6.9*	4.9
9.0											5.8*	5.8*	6.9
7.5											4.9	5.3*	8.1
6.0											4.1	5.1*	9.0
4.5	13.8*	13.8*	11.2*	11.2*	8.2	10.0*	5.8	8.9	4.1	6.6	3.7	5.2*	9.5
3.0	21.0*	21.0*	11.9	15.4*	8.0	11.5*	5.6	8.7	4.0	6.5	3.4	5.3*	9.7
1.5	21.2	21.6*	11.4	16.1*	7.5	11.7	5.4	8.7	3.9	6.4	3.3	5.6	9.8
0	19.8	20.2*	10.6	16.0*	7.0	11.7	5.1	8.5	3.8	6.3	3.4	5.7	9.6
-1.5	19.2	22.7*	10.1	16.1*	6.7	11.6	4.9	8.2	3.7	6.1*	3.6	5.7*	9.1
-3.0	19.1	23.8*	9.9	15.9*	6.6	11.5	4.7	8.0*			4.1	4.8*	8.3
-4.5	19.4	20.6*	10.0	13.7*	6.5	8.4*					3.5*	3.5*	7.2



Height



Can be slewed through 360°



In longitudinal position of undercarriage



Max. reach

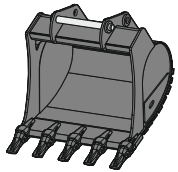
* Limited by hydr. capacity

The load values are quoted in tons (t) at stick end (without bucket), and may be swung 360° on firm and even ground. Adjacent values are valid for the undercarriage when in the longitudinal position. Capacities are valid for 600 mm wide track pads with adjusting cylinder in optimal position. Indicated loads are based on ISO 10567 standard and do not exceed 75% of tipping or 87% of hydraulic capacity (indicated via *). Without bucket cylinder, link and lever the lift capacities will increase by 410 kg. Lifting capacity of the excavator is limited by machine stability and hydraulic capacity.

According to European Standard, EN 474-5: In the European Union excavators have to be equipped with an overload warning device, a load diagram and automatic safety check valves on hoist cylinders and stick cylinder(s), when they are used for lifting operations which require the use of lifting accessories.

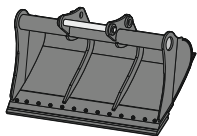
Determine maximum load lift from load lift chart displayed in the operator's cab or from load lift chart detailed in the operator's manual supplied with the machine.

Attachments



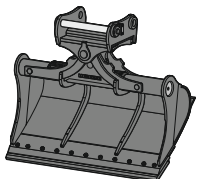
Backhoe bucket TL 05

Mounting		direct mounting, SWA 48 mechanical, SWA 48 hydraulic, SWA 48 Solidlink, SWA 66 mechanical, SWA 66 hydraulic, SWA 66 Solidlink						
Cutting width	mm	800 ²⁾	1,050	1,250	1,400	1,550	1,650	1,750
Capacity	m ³	0.70	1.00	1.25	1.45	1.60	1.75	2.15
Weight ¹⁾	kg	810	870	990	1,050	1,130	1,180	1,270



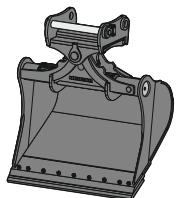
Ditch cleaning bucket GRL rigid 05

Mounting		direct mounting, SWA 48 mechanical, SWA 48 hydraulic, SWA 48 Solidlink, SWA 66 mechanical, SWA 66 hydraulic, SWA 66 Solidlink						
Cutting width	mm	2,000		2,400			2,400	
Capacity	m ³	0.70		0.85			1.15	
Weight ¹⁾	kg	550		639			718	



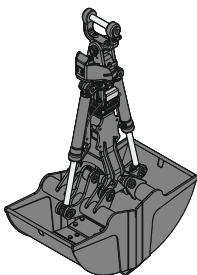
Ditch cleaning bucket GRL 100

Mounting		direct mounting, SWA 48 mechanical, SWA 48 hydraulic, SWA 48 Solidlink, SWA 66 mechanical, SWA 66 hydraulic, SWA 66 Solidlink						
Cutting width	mm	2,000	2,000	2,000	2,200	2,400	2,400	
Capacity	m ³	0.70	1.20	1.45	1.65	0.85	1.45	
Weight ¹⁾	kg	1,375	1,520	1,600	1,675	1,480	1,625	
Tilt angle		2 x 50°	2 x 50°	2 x 50°	2 x 50°	2 x 50°	2 x 50°	



Tilt bucket SL 100

Mounting		direct mounting, SWA 48 mechanical, SWA 48 hydraulic, SWA 48 Solidlink, SWA 66 mechanical, SWA 66 hydraulic, SWA 66 Solidlink						
Cutting width	mm	1,600	1,600	1,700 ³⁾	1,800	1,800 ³⁾		
Capacity	m ³	1.45	1.75	1.85	1.60	2.00		
Weight ¹⁾	kg	1,520	1,630	1,800	1,610	1,860		
Tilt angle		2 x 50°	2 x 50°	2 x 50°	2 x 50°	2 x 50°		



Clamshell grab

GMZ 30 Clamshell buckets									
Mounting		direct mounting, SWA 48 mechanical, SWA 48 hydraulic, SWA 48 Solidlink, SWA 66 mechanical, SWA 66 hydraulic, SWA 66 Solidlink, Oilquick OQ 70, Oilquick OQ 70/55, Oilquick OQ 80							
Shell width	mm	600	800	1,000	1,200				
Capacity ⁴⁾	m ³	0.38	0.52	0.65	0.80				
Opening width	mm	1,644	1,644	1,644	1,644				
Weight ⁵⁾	kg	1,050	1,130	1,210	1,290				
GMZ 40 Clamshell buckets									
Mounting		direct mounting, SWA 48 mechanical, SWA 48 hydraulic, SWA 48 Solidlink, SWA 66 mechanical, SWA 66 hydraulic, SWA 66 Solidlink, Oilquick OQ 70, Oilquick OQ 70/55, Oilquick OQ 80							
Shell width	mm	800	1,000	1,200	1,400	1,600			
Capacity ⁴⁾	m ³	0.65	0.85	1.05	1.20	1.40			
Opening width	mm	1,962	1,962	1,962	1,962	1,962			
Weight ⁵⁾	kg	1,345	1,430	1,520	1,605	1,695			
GMZ 80 Clamshell buckets									
Mounting		direct mounting, SWA 48 mechanical, SWA 48 hydraulic, SWA 48 Solidlink, SWA 66 mechanical, SWA 66 hydraulic, SWA 66 Solidlink, Oilquick OQ 80							
Shell width	mm	1,200	1,200	1,400	1,400	1,650	1,650	2,000	2,000
Capacity ⁴⁾	m ³	1.40	1.40	1.70	1.70	2.00	2.00	2.50	2.50
Opening width	mm	2,128	2,128	2,128	2,128	2,128	2,128	2,128	2,128
Weight ⁵⁾	kg	2,170 ⁶⁾	2,130	2,275 ⁶⁾	2,225	2,415 ⁶⁾	2,345	2,595 ⁶⁾	2,520

¹⁾ based on an attachment in a standard design with SWA 66 Solidlink quick coupler mounting

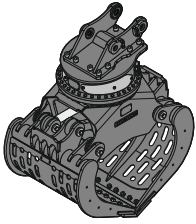
²⁾ for SWA 66 quick coupler mounting only

³⁾ HD version

⁴⁾ capacity specifications are theoretically determined values; fill level varies depending on the material being loaded

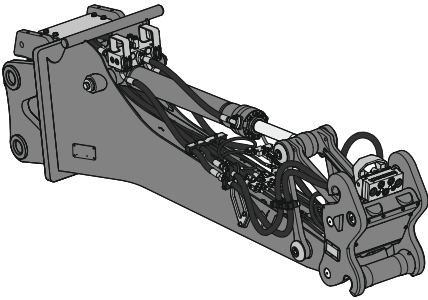
⁵⁾ with XHD suspension

⁶⁾ incl. teeth



Sorting grab SG 30B

Mounting	direct mounting, SWA 48 mechanical, SWA 48 hydraulic, SWA 48 Solidlink, SWA 66 mechanical, SWA 66 hydraulic, SWA 66 Solidlink, Oilquick OQ 70, Oilquick OQ 70/55, Oilquick OQ 80								
Shell type	perforated ²⁾			ribbed ²⁾			closed ²⁾	Stone shell ³⁾	
Shell width	mm	1,000	1,200	1,400	1,000	1,200	1,400	1,000	1,020
Capacity	m ³	0.85	1.00	1.15	0.75	0.90	1.05	0.85	0.85
Max. closing force	kN	80	80	80	80	80	80	80	80
Weight ¹⁾	kg	1,485	1,560	1,635	1,565	1,675	1,780	1,515	1,815



Stick extension LS 18

Mounting machine side	SWA 48 mechanical, SWA 48 hydraulic, SWA 48 Solidlink, SWA 48 Solidlink-10, SWA 66 mechanical, SWA 66 hydraulic, SWA 66 Solidlink		
Mounting attachment side	direct mounting, SWA 33 mechanical, SWA 33 mechanical Solidlink ⁶⁾ , SWA 33 hydraulic ⁷⁾ , SWA 33 Solidlink ^{6) 7) 8)} , SWA 48 mechanical, SWA 48 mechanical Solidlink ⁶⁾ , SWA 48 hydraulic ⁷⁾ , SWA 48 Solidlink ^{6) 7) 8)}		
Length	m	2.65	3.05
Weight ⁴⁾	kg	1,130	1,190

¹⁾ without quick coupler mounting

²⁾ with standard bolt-on cutting edge

³⁾ with Liebherr teeth Z 40 C

⁴⁾ based on standard stick extension LS 18 with SWA 48 Solidlink quick coupler mountings on both sides (underside of stick extension and machine side mounting) and electric switchover

⁵⁾ attachment with high pressure circuit only possible with the manual switchover tipping cylinder or an extended hydraulic circuit on the carrier machine

⁶⁾ attachment with high pressure circuit only possible with the electric / manual switchover tipping cylinder or an extended hydraulic circuit on the carrier machine

⁷⁾ 14-pin signal contact strip is required, for example to control and monitor the hydraulic quick coupling system on the stick extension on the attachment side or to transfer electrical signals for the switchover

⁸⁾ to use different hydraulic circuits, either Solidlink 33-9 / Solidlink 48-10 is required on the machine side, or a switchover system using the equipment power socket, controlled via the carrier machine's signal contact strip

Serial equipment



Undercarriage

Lashing eyes
Sprocket with dirt ejector
Track and carrier rollers, sealed and lifetime-lubricated



Uppercarriage

Access platforms without protruding parts
Anti-skid surfaces
Automatic swing brake lock
Centralised lubrication system (automatic)
DEF tank filling indicator
DEF tank lockable access hatch
Engine hood with gas spring opening
Filters accessible from ground level
Handrails
Hydraulic oil level, visible from ground level
Lockable service doors
Lockable storage and accessories compartment
Lockable storage box
Main switch, accessible from ground level
Main switch, electric, with timer
Main switch, manual, lockable
Positioning swing brake manual
Protection grid on radiator fan
Safe uppercarriage side access platform
Sound insulation
Swing-out radiators
Windshield washer fluid tank, accessible from ground level



Hydraulic system

Dedicated swing circuit
Filter with integrated fine filters
Hydraulic pressure measuring ports
Liebherr Positive Control system with 2 independent circuits
Magnetic rod
Pressure accumulator for controlled lowering of equipment with engine turned off



Engine

Air filter with automatic dust ejector
Automatic engine idling / speed increase, controlled via joystick sensors
Common-Rail injection system
Engine oil level gauge
Exhaust gas after-treatment system – DOC + SCR Filter
Fixed geometry turbocharger
Fuel fine filter
Fuel pre-filter and water separator
Fuel priming pump
Intercooler
Power Pack EU Stage V



Cab

9" multifunction colour touchscreen
Air conditioning, automatic, tri-zone, controlled via display
Armrests adjustable in length, height and inclination
Bottle holder
Cab air filters housing, accessible from ground level
Cab door sliding windows
Cigarette lighter
Coat hook
DEF consumption on touchscreen
DEF level on touchscreen
Electric socket in cab (12V)
Electric socket in cab (24V)
Emergency hammer
Engine coolant level, visible from the cab
Engine oil level on touchscreen
Fuel consumption on touchscreen
Fuel level on touchscreen
Hydraulic oil level on touchscreen
Interior lighting
Laminated right hand side window
LiDAT Plus (Liebherr data transfer system)
Mechanical hour meter, visible from ground level
Mobile phone storage net
Movement priority between swing and boom, adjustable via touchscreen
Movement priority for stick-in, adjustable via touchscreen
Operating modes
Power modes
Rain hood over front window opening
Rearview mirror
Rear view monitoring camera
Rear window emergency exit
Right hand side view monitoring camera
Roll-down sun blinds for windscreen and roof window
ROPS safety cab structure (ISO 12117-2)
Rubber floor mat, fixed on floor and removable
Shortcut buttons on joystick configurable
Stepless adjustable engine speed
Storage box
Storage nets
Storage spaces
Swing braking torque adjustable via touchscreen
Swing drive gearbox oil level, visible from the cab
Tilttable console left
Tinted windows
Visco-elastic damping
Windscreen wiper and washer



Equipment

Anti-drift system boom cylinders
Anti-drift system stick cylinder
Boom cylinders regeneration
Pivot points made of cast steel
SAE split flanges on high pressure lines
Stick cylinder regeneration

Equipment standard / option

Undercarriage

Chain guide 1 piece	●
Chain guide 3 pieces	+
Chain guide 4 pieces	+
Cover and base plate for undercarriage centre section	●
Reinforced cover and base plate for undercarriage centre section	+
Special painting	+
Steps	●
Steps wide	+
Track chains cleaner	+
Track pads triple grouser 600 mm	●
Track pads triple grouser 700 / 750 / 800 / 900 mm	+
Track pads triple grouser reinforced 600 mm	+
Tracks, sealed and greased	●
Tracks, sealed and greased, reinforced	+
Undercarriage LC	+
Undercarriage LC-V	+
Undercarriage NLC	+
Undercarriage storage compartment	+

Uppercarriage

Batteries high capacity	+
Batteries standard capacity	●
Boxing ring	+
Catwalk tiltable front left	+
Counterweight heavy 6.2 t	+
Counterweight standard 5.1 t	●
Electric socket on uppercarriage (24 V)	+
Extended tool set including tool box	+
External starting aid (24 V)	+
Front right rearview mirror	+1)
Fuel anti-theft protection	+
Headlight on uppercarriage, front left, LED+, 1 piece, protection included	+1)
Headlight on uppercarriage, front right, LED, 1 piece, protection included	●1)
Headlight on uppercarriage, front right, LED+, 1 piece, protection included	+1)
Headlight on uppercarriage, lateral left, LED+, 1 piece	+1)
Headlight on uppercarriage, lateral right, LED+, 1 piece	+1)
Headlights on uppercarriage, rear, LED+, 2 pieces	+1)
Lighting for tank area	+1)
Lighting for uppercarriage access	+1)
Lockable fuel tank cap	●
Lockable fuel tank cap with padlock	+
Reflective warning stickers	+
Rotating beacons on uppercarriage, rear, LED, 2 pieces	+
Skyview 360°	+
Special painting	+
Tank refilling pump fuel	+
Tool set including storage case	●
Uppercarriage bottom and side protection	+
Uppercarriage bottom closure sheets	●

Hydraulic system

Bypass filter for hydraulic oil	+
Filter for hydraulic hammer return flow	+
High pressure circuit bypass	+
High pressure circuit flow summation	+
High pressure circuit switchable on pedals or mini-joystick	+
High pressure circuit with Tool Control (20 attachment adjustments on display)	+
Leak oil line for attachment	+
Liebherr hydraulic oil	●
Liebherr hydraulic oil, adapted for extreme climate conditions	+
Liebherr hydraulic oil, biodegradable	+
Medium pressure circuit	+

Engine

Air pre-filter with cyclonical dust trap	+
Automatic engine shutdown after idling	+
Engine shut-down with overrun	+
Lighting for engine compartment	+1)
Preheating fuel	+
Radiator fine mesh protection grid	+
Reversible fan drive	+

Equipment standard / option



Cab

2" seat belt with retractor	●
3" seat belt with retractor, orange colour	+
4-points seat belt	+
Acoustic travel alarm deactivatable	+
Auxiliary heater programmable	+
Bottom windscreen wiper	+
Coming / Leaving Home	+ ¹⁾
Cool box (12V)	+
Dark tinted windows	+
Electrically adjustable and heated outside rear-view mirrors	+ ¹⁾
Electronic immobiliser	+
Emergency stop in cab	+
FGPS front guard	+
FGPS front guard tiltable	+
Fire extinguisher	+
First-aid box	+
Footrest	+
FOPS top guard	+
FOPS top guard flat	+
Handrests elevated for joysticks	+
Headlights on cab, front, LED, 2 pieces	● ¹⁾
Headlights on cab, front, LED+, 2 pieces	+ ¹⁾
Headlights on cab roof, front, LED+, 2 pieces	+ ¹⁾
Impact resistant one-piece windscreen	+
Impact resistant roof window	+
Independent travel	+ ¹⁾
Integral protection guard	+
Laminated roof window	●
Lightbar on cab	+
Lighting for cab access	+ ¹⁾
Luminosity control (LED+ headlights)	+ ¹⁾
Mini-joystick proportional	+
Movement restriction for boom	+
Movement restriction for stick	+
Operator's seat Comfort	●
Operator's seat Premium	+
Overload warning system	+
Personalised operator profile	+
Preparation for tiltrotator	+
Radio Comfort	+
Radio pre-installation	●
Remote cab lock	+ ¹⁾
Retractable laminated two-piece windscreen	●
Roof sun shield	+
Roof window wiper	+
Rotating beacon on cab, LED, 1 piece	+
Seat belt reminder	+
Smart Key	+ ¹⁾
Special painting	+
Straight travel via mini-joystick	+ ¹⁾
Sun visor	+
Switch between high pressure and bucket cylinder controls	+
Travel speed management	+ ¹⁾
Windscreen bottom protection grid	+



Equipment

Boom cylinders rod protection	+
Bucket cylinder rod protection	+
Centralised lubrication extended for connecting link	+
Floating boom	+
Grapple hydraulic lines (bucket cylinder inactive)	+
Headlight guard on boom, right	+
Headlight guards on boom, right and left	+
Headlight on boom, left, LED+, 1 piece	+ ¹⁾
Headlight on boom, right, LED, 1 piece	● ¹⁾
Headlight on boom, right, LED+, 1 piece	+ ¹⁾
Headlight on stick, bottom, LED+, 1 piece	+ ¹⁾
Hydraulic hose guard Solidlink	+
Liebherr bucket range	+
Liebherr tooth system	+
Load holding valve for bucket cylinder	+
Lubrication hoses protection on stick	+
Mono boom 6.20m	+
Mono boom straight 6.50m	+
Pipe fracture safety valve for stick cylinder	●
Pipe fracture safety valves for boom cylinders	●
Quick coupler SWA 48 hydraulic	+
Quick coupler SWA 48 mechanical	+
Quick coupler SWA 66 hydraulic	+
Quick coupler SWA 66 mechanical	+
Solidlink electric signal plug	+
Solidlink for quick coupler SWA 48 hydraulic	+
Solidlink for quick coupler SWA 66 hydraulic	+
Special painting	+
Stick 2.50m	+
Stick 2.80m	+
Stick 3.20m	+
Stick 3.70m	+
Stick bottom protection	+
Tool Management	+
Two-piece boom 6.40m	+



Assistance system

Machine guidance system Leica 2D passive - "3D ready"	+
Machine guidance system Leica 2D semi-automatic - "3D ready"	+
Machine guidance system Leica 3D passive	+
Machine guidance system Leica 3D semi-automatic	+
Preparation for machine guidance system	+
Preparation for weighing system	+

● = Standard, + = Option

¹⁾ Equipment not individually available, but only as predefined packages

Non-exhaustive list, please contact us for further information.

Options and /or special equipment, supplied by vendors other than Liebherr, are only to be installed with the knowledge and approval of Liebherr in order to retain warranty.

The Liebherr Group



Global and independent: more than 75 years of success

Liebherr was founded in 1949 when, with the development of the world's first mobile tower crane, Hans Liebherr laid the foundations for a family-run company which now has more than 50,000 employees and comprises over 150 companies across every continent. The holding company of the Group is Liebherr-International AG in Bulle, Switzerland, whose shareholders are exclusively members of the Liebherr family.

Technology leadership and pioneering spirit

Liebherr is a pioneer and its forward-looking approach has seen it make important contributions to technology history over a wide variety of industries. Employees throughout the world continue to share the courage of the company founder, sharing a passion to produce innovative products and a determination to provide world-leading equipment and machinery.

Diversified product programme

Liebherr is one of the world's biggest construction machine manufacturers and provides high-quality, user-oriented products and services. Its product range includes the product segments earthmoving, material handling, deep foundation, mining, mobile and crawler cranes, tower cranes, concrete technology, maritime cranes, aerospace and transportation systems, gear technology and automation systems, refrigerators and freezers, components and hotels.

Customised solutions and maximum customer value

Liebherr solutions are characterised by precision, implementation and longevity. The company is committed to technological excellence and to providing customers with solutions that match their needs exactly. For Liebherr, customer focus does not end with delivery of a product but continues through a comprehensive range of back-up and support services.

www.liebherr.com

Liebherr-France SAS

2 avenue Joseph Rey, B.P. 90287 • 68005 Colmar Cedex, France • Phone +33 389 213030
info.lfr@liebherr.com • www.liebherr.com • www.facebook.com/LiebherrConstruction