
PR 716 – PR 766

Equipment information
crawler tractors

LIEBHERR

Crawler dozers



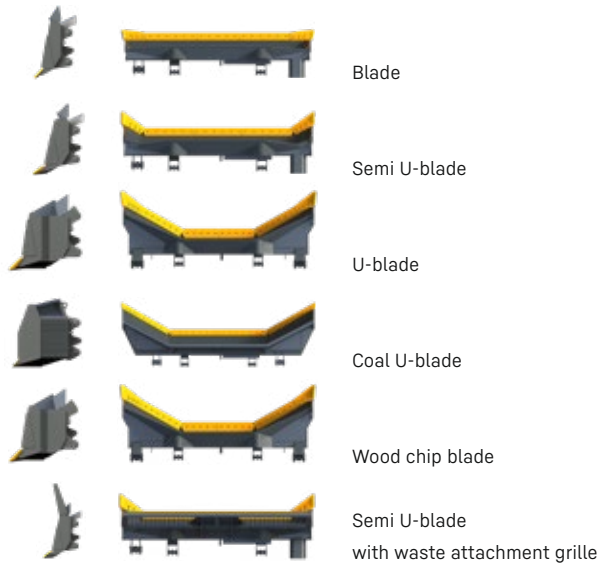
Equipment for crawler tractors



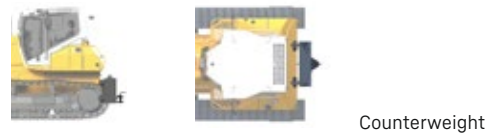
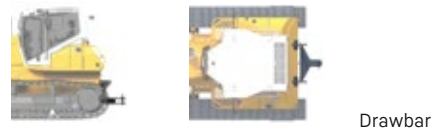
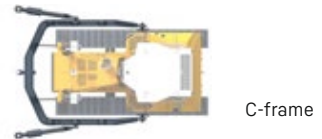
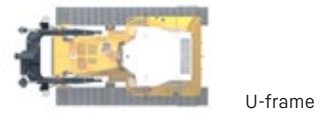
Strong machines require strong equipment

Over 40 years experience of designing and building crawler tractors has given us significant insight into the ways in which these machines are used in their various applications. As such we offer a wide range of highly specialised equipment to complement our powerful base machines. Manufactured from high-quality components our selection of blades, rippers and rear-section equipment will ensure that you always have the right machine for the job.

The right equipment for every operation



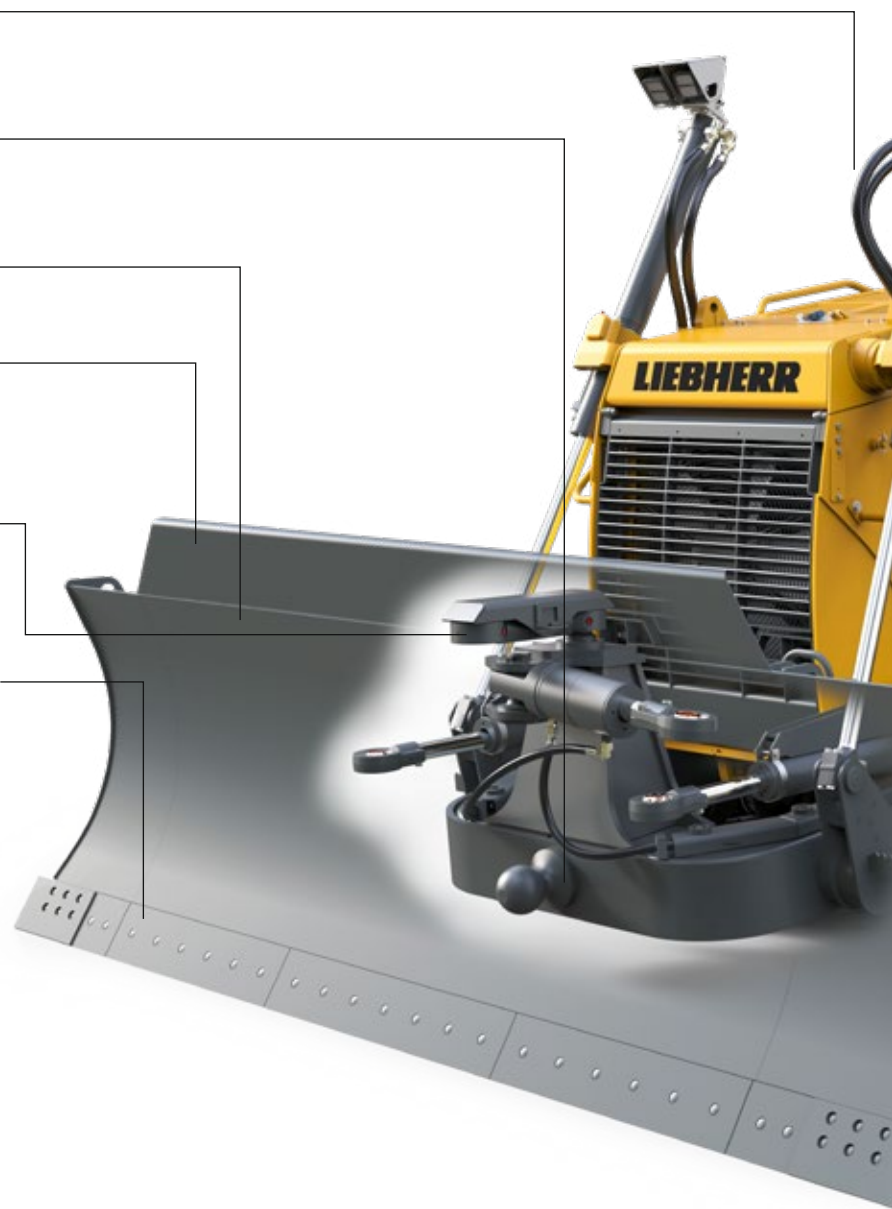
Pushframes



10 arguments for your successful deployment

Front equipment

- The hydraulic lines of the swivel cylinder and tilt cylinder are fitted as reinforced with wear protection as standard.
- Hardened ball journals made of high-performance steel for optimal force absorption without play, particularly for tough operations.
- Blade plate made of highly wearresistant steel for longer blade lifetime.
- The overflow tray stops material flowing above the blade. This prevents damage to the cooling system and swivel cylinder and ensures that the machine runs smoothly.
- The mechanical cutting angle adjustment enables optimal movement of materials in front of the blade.
- Hardened blade cutting edges can be turned 180°. This doubles the lifespan. The blade corners are available in straight form (blade / 6-way blade) for optimal bulldozing characteristics or in reinforced form with more wear material (semi U-blade, U-blade).





Rear equipment

- Liebherr's hydrostatically driven crawler tractors develop a particularly high tractive force
- when used for ripping work. The rippers are extremely robust in design, enabling them to absorb forces which develop. The connection to the rear ripper is directly integrated into the basic machine and secured with bolts. This enables maximum force transmission.
- The ripper teeth can be individually replaced and ensure the best penetrating force on hard subsoil.
- Parallelogram rippers penetrate the ground at a constant ripping angle and do not require much space in the parked position.*
- Rippers with a hydraulically adjustable cutting angle provide the best adjustability for maximum productivity and ripping force.*

* Availability may vary according to the machine type. Contact your Liebherr business partner about this.

The right equipment for every application

Blade



Features

Good rolling characteristics, robust design, standard cylinder protection, replaceable cutting edges, cutting angle adjustment.

Applications

Where maximum penetration is required. Note: Reduced thrust power as semi U-blade, no lateral clearing possible.

6-Way blade



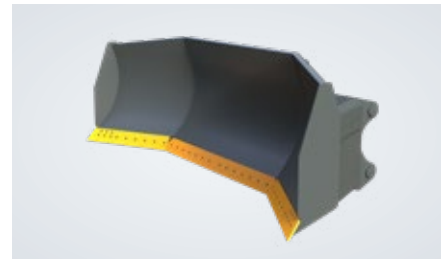
Features

Good rolling characteristics, standard cutting angle adjustment. Robust design, movement possible in six directions.

Applications

Flexible blade equipment, ideal for bulldozing work, formation work and lateral clearing of materials. Note: Reduced thrust power. Configuration only in conjunction with rear ripper or counterweight.

U-blade



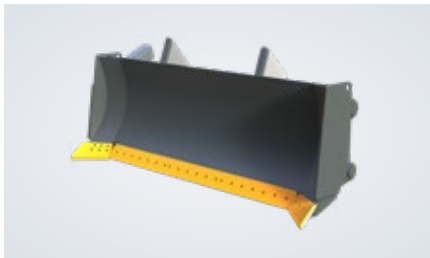
Features

The U-blade offers greater capacity with the larger side sections.

Applications

The ideal equipment for efficient and challenging work such as moving loose material over large distances (mining and tips, funnel applications) and pushing loaders.

Semi U-blade



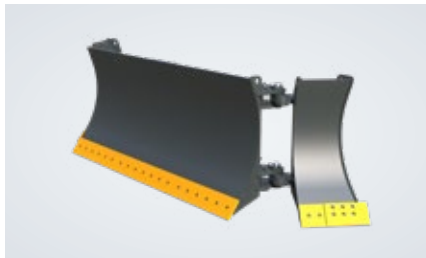
Features

Good rolling characteristics, robust design, standard cylinder protection, replaceable cutting edges.

Applications

Very versatile blade equipment for operations where thrust power is required.
Note: Reduced penetration as blade, no lateral clearing possible.

6-way blade with folding edges

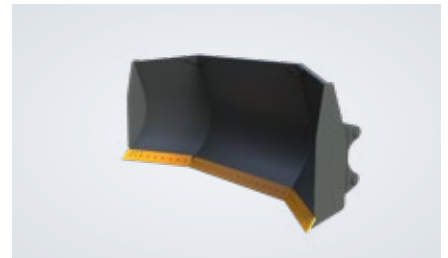


Features

As well as the standard 6-way blade, the folding edges of the optional 6-way blade can be folded in to reduce the transport width.

Safe and simple locking with minimal effort.

Blade design for special application



Features

Liebherr offers additional crawler tractor blades for your individual operations. The reliable blades are designed to improve performance during operations.

Most common U-blade designs

- Coal U-blade
- Wood chip U-blade

1-shank ripper



Features

High penetration depth on hard subsoil (typical for PR 746 and larger).

Applications

Optional ripper for material difficult to break down or material which breaks into large pieces.

3-shank ripper



Features

3-shank rippers without cutting angle adjustment offer a larger ripping surface than the 1-shank ripper, but less penetration. The parallelogram design saves space in the parked position.

Applications

For loosening or initial ripping of material difficult to break down – in easy to moderately difficult operations.

5-shank ripper



Features

5-shank rippers without cutting angle adjustment offer a larger ripping surface than the 1-shank ripper, but less penetration.

Applications

Ideal for applying lime – for better mixing of the surface layers than with a 3-shank ripper.

Counterweight



Applications

The counterbalance is required for operations for which no rear ripper is used (centre of gravity).

Important:

It is required for a neutral centre of gravity and allows for better traction when working on a slope.

Rear side scraper bar



Applications

The scraper bar prevents unwanted material accumulating between the travel gear and superstructure.

Application: Equipment typical for dirt-intensive operations (for example, recycling).

Cable winch



Features

The cable drum is hydraulically driven with an open circuit.

Applications

The 45 m cable winch is particularly suited to pulling out tree stumps, recovering other vehicles and securing the crawler tractor when working on a slope.

The Liebherr Group



Global and independent: more than 75 years of success

Liebherr was founded in 1949 when, with the development of the world's first mobile tower crane, Hans Liebherr laid the foundations for a family-run company which now has more than 50,000 employees and comprises over 150 companies across every continent. The holding company of the Group is Liebherr-International AG in Bulle, Switzerland, whose shareholders are exclusively members of the Liebherr family.

Technology leadership and pioneering spirit

Liebherr is a pioneer and its forward-looking approach has seen it make important contributions to technology history over a wide variety of industries. Employees throughout the world continue to share the courage of the company founder, sharing a passion to produce innovative products and a determination to provide world-leading equipment and machinery.

Diversified product programme

Liebherr is one of the world's biggest construction machine manufacturers and provides high-quality, user-oriented products and services. Its product range includes the product segments earthmoving, material handling, deep foundation, mining, mobile and crawler cranes, tower cranes, concrete technology, maritime cranes, aerospace and transportation systems, gear technology and automation systems, refrigerators and freezers, components and hotels.

Customised solutions and maximum customer value

Liebherr solutions are characterised by precision, implementation and longevity. The company is committed to technological excellence and to providing customers with solutions that match their needs exactly. For Liebherr, customer focus does not end with delivery of a product but continues through a comprehensive range of back-up and support services.

www.liebherr.com