
125 K

EN 14439:2009 – C25
Technical Data

LIEBHERR

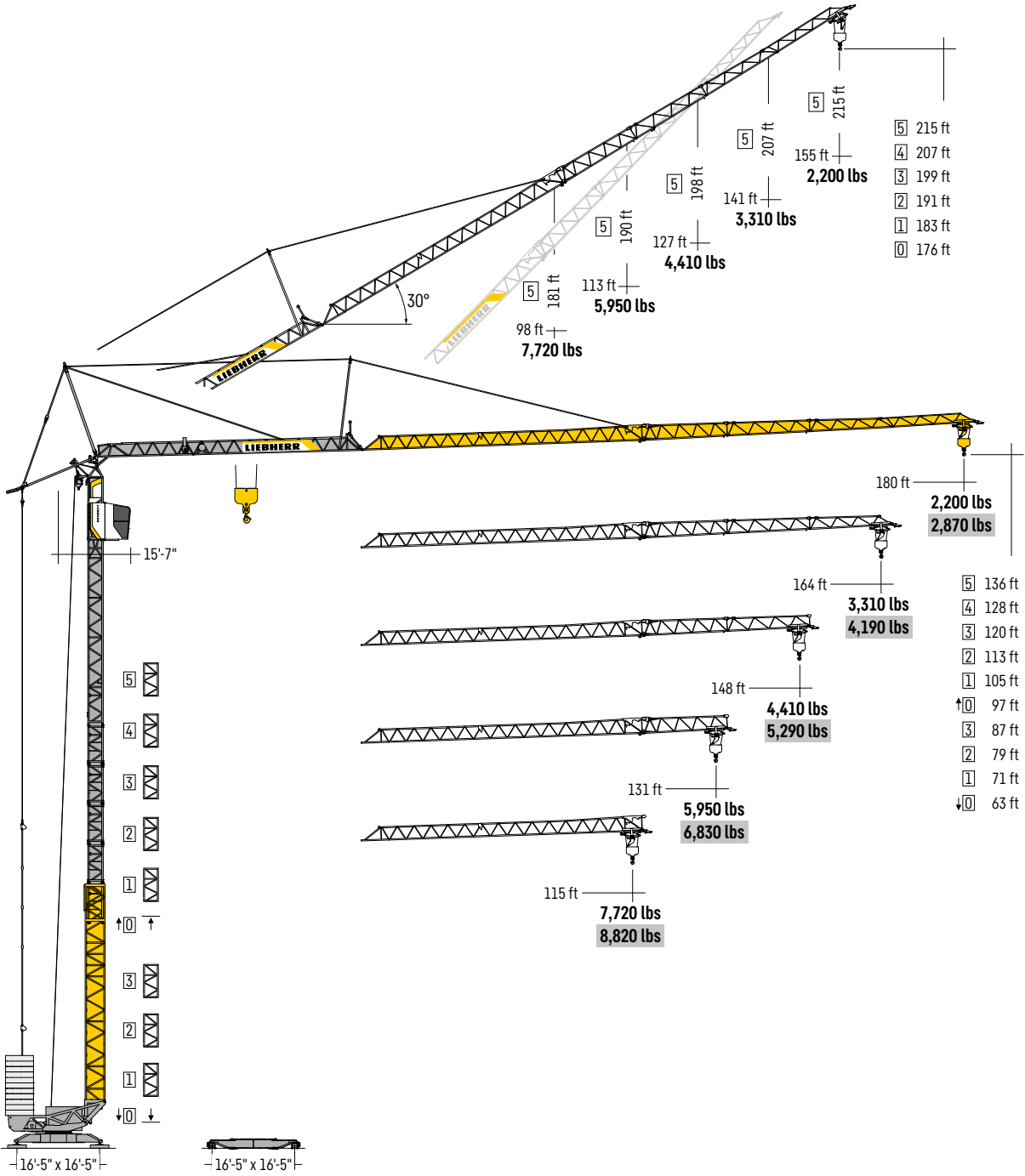
Tower Cranes

CE | UK
CA

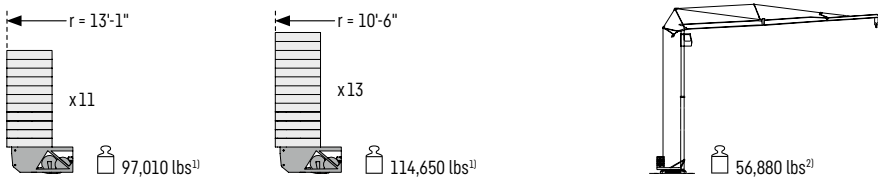
125 K

Crane operation and transport · Accionamiento de grúa y transporte.....	04
Weights · Pesos.....	04
Radius and capacity · Alcances y cargas.....	06
Driving units · Mecanismos	06
Erection procedure · Procedimiento de montaje	07
Packing List · Lista de contenido	07

Crane operation and transport - Accionamiento de grúa y transporte

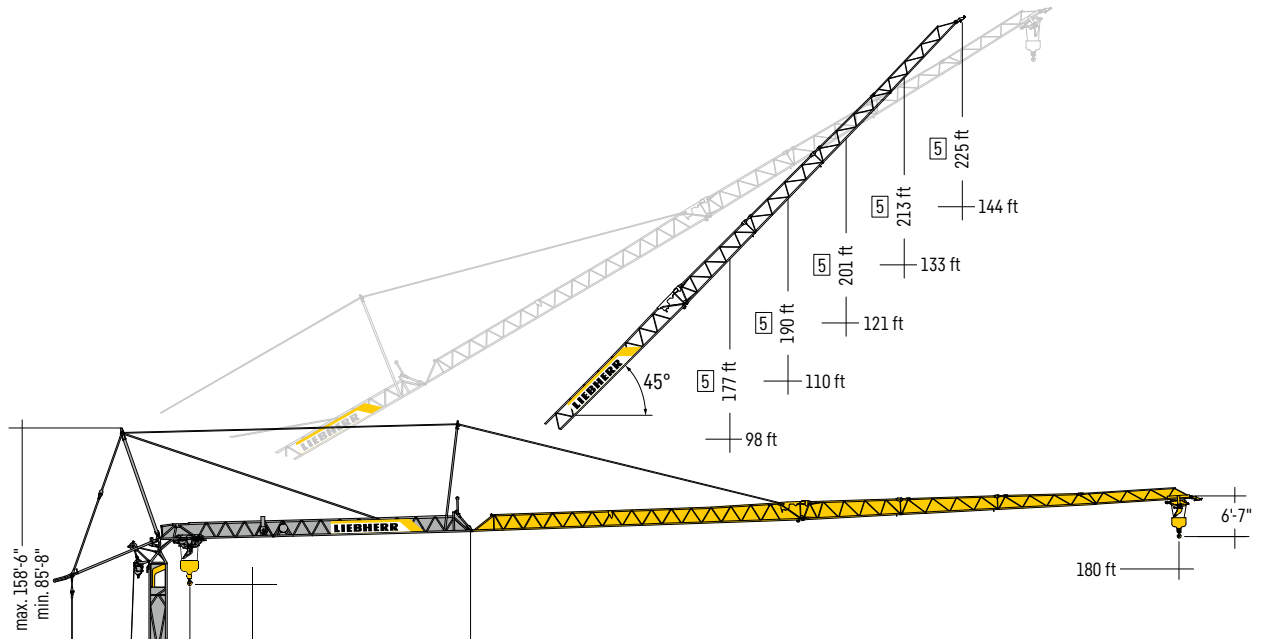


Weights - Pesos



¹⁾ See instruction manual. - Ver manual de instrucción.

²⁾ Without counterweights - Sin lastre

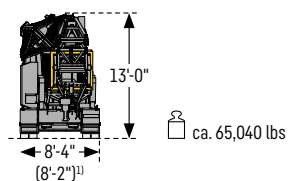
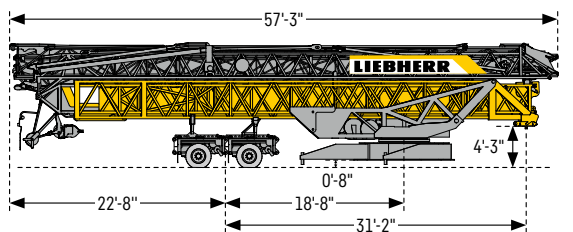
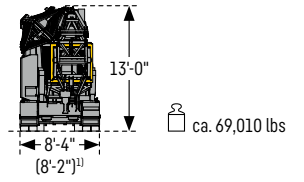
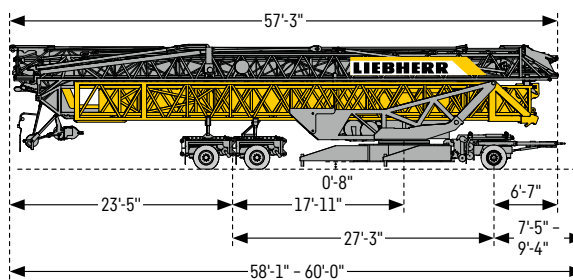
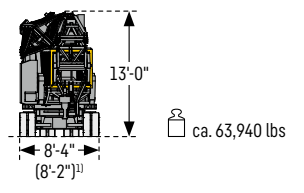
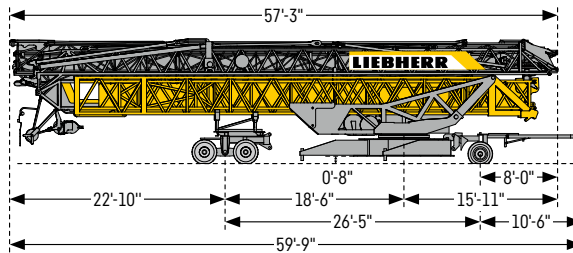


max. 158'-6"
min. 85'-8"

7'-3"
11'-6"
60'-4"

- 5 131 ft
- 4 123 ft
- 3 115 ft
- 2 107 ft
- 1 99 ft
- 0 91 ft
- 3 81 ft
- 2 73 ft
- 1 66 ft
- 0 58 ft

16'-5" x 16'-5"



Radius and capacity - Alcances y cargas

Load-Plus

ft	ft	lbs	ft															
			26	39	52	66	79	92	105	115	125	131	138	148	157	164	171	180
180	11 - 29	17,640	17,640	13,930	10,910	8,880	7,430	6,350	5,510	4,980	4,540	4,280	4,030	3,700	3,420	3,240	3,090	2,870
164	11 - 34	17,640	17,640	15,810	12,680	10,520	8,950	7,740	6,790	6,190	5,690	5,380	5,090	4,720	4,390	4,190		
148	11 - 40	17,640	17,640	14,290	11,820	10,010	8,660	7,580	6,920	6,350	6,020	5,710	5,290					
131	11 - 48	17,640	17,640	16,270	13,430	11,350	9,810	8,600	7,850	7,210	6,830							
115	11 - 53	17,640	17,640	14,860	12,630	10,960	9,630	8,820										

→ lbs

LM 1

ft	ft	lbs	ft															
			26	39	52	66	79	92	105	115	125	131	138	148	157	164	171	180
180	11 - 29	17,640	17,640	13,250	9,940	7,850	6,420	5,380	4,590	4,100	3,700	3,460	3,240	2,950	2,690	2,540	2,400	2,200
164	11 - 34	17,640	17,640	15,370	11,750	9,440	7,800	6,610	5,710	5,140	4,670	4,390	4,120	3,790	3,480	3,310		
148	11 - 40	17,640	17,640	13,650	10,910	9,020	7,650	6,590	5,950	5,400	5,090	4,810	4,410					
131	11 - 48	17,640	17,640	15,980	12,740	10,520	8,910	7,690	6,940	6,330	5,950							
115	11 - 53	17,640	17,640	14,240	11,730	9,920	8,550	7,720										

→ lbs

Jib position 30° - Posición de la pluma 30

ft	ft	lbs	ft														
			26	39	52	66	79	92	98	105	113	118	125	127	138	141	151
180	11 - 51	8,820	8,820	8,530	6,680	5,420	4,500	4,120	3,810	3,460	3,260	3,020	2,950	2,620	2,540	2,290	2,200
164	11 - 61	8,820	8,820	8,110	6,680	5,600	5,180	4,780	4,390	4,140	3,880	3,790	3,420	3,310			
148	11 - 70	8,820	8,820	7,720	6,500	6,000	5,560	5,090	4,830	4,520	4,410						
131	11 - 81	8,820	8,820	7,610	7,010	6,480	5,950										
115	11 - 90	8,820	8,820	8,530	7,720												

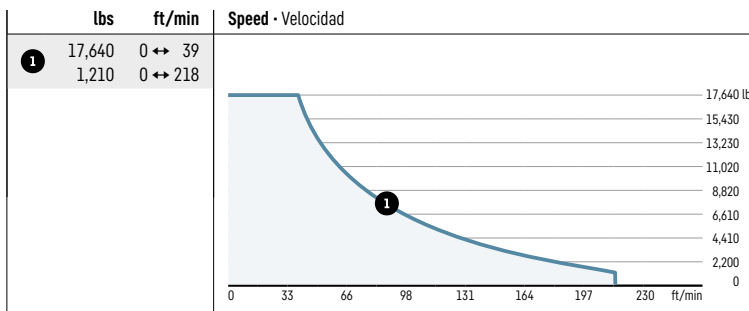
→ lbs

Load-Plus = Variant speeds and service conditions. - Otras velocidades y características de funcionamiento.

Driving units - Mecanismos

18 kW FC

stepless
sin escalones



Power Requirements¹⁾

480 V/60 Hz

- 480 V phase-phase
- 277 V phase-ground
- 120° phase shift
- 50 A fused disconnect (max.)

Minimum generator size: 50 kW

Supply cable

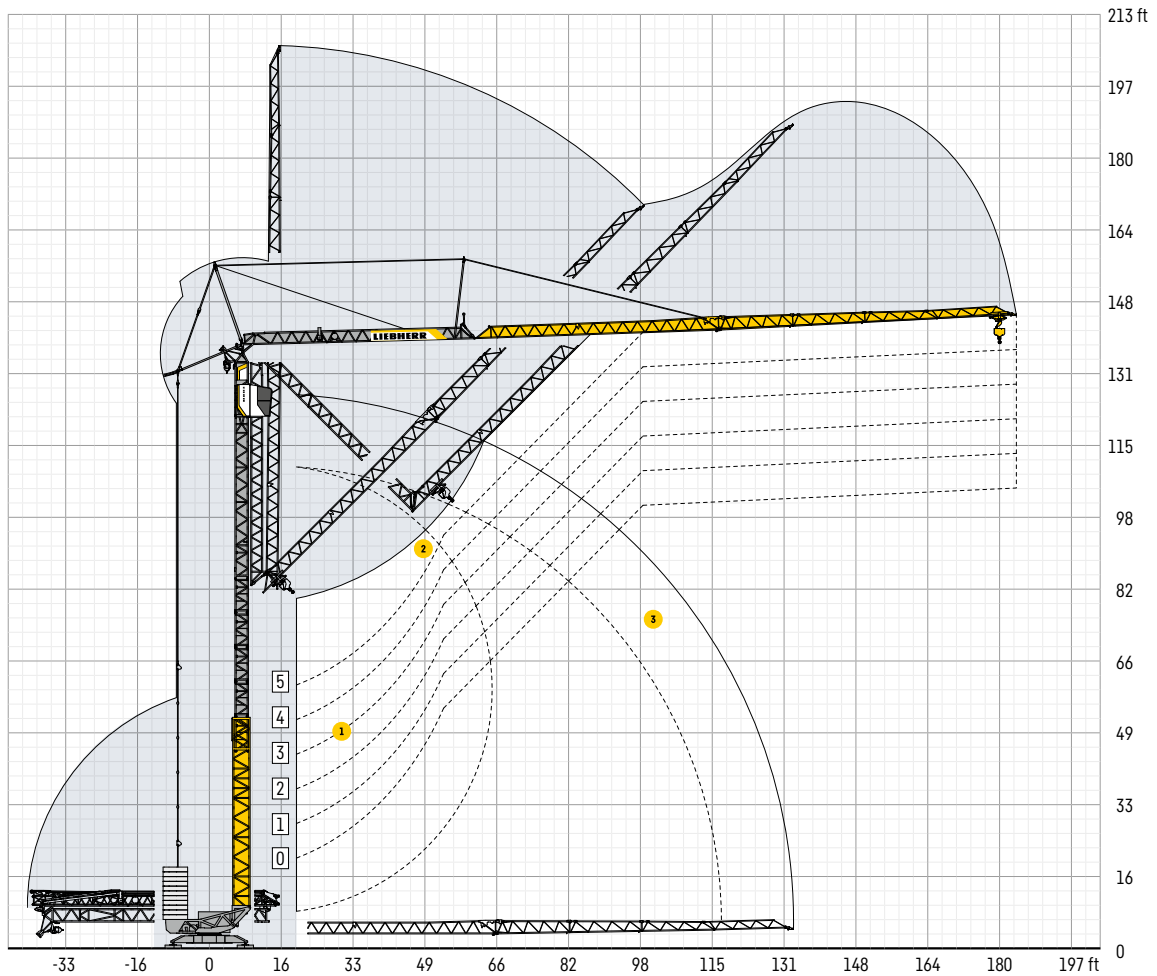
- 3 hot + ground
- 1x4x7 AWG
- 820 ft max.

Transformers

- do not use "open-delta"

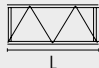

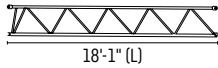
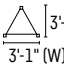

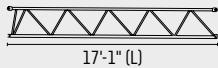
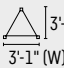

					380 - 480 V	50 - 60 Hz	26.0 kVA (FC)
0 ↔ 0.8 rpm 7.5 kW FC	0 ↔ 233 ft/min 3.7 kW FC	0 ↔ 75 ft/min 2 x 3.0 kW FC	0 - 45°, 105 sec. 4.0 kW FC				

Erection procedure - Procedimiento de montaje



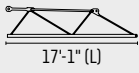
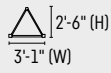

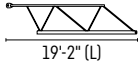
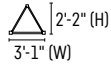


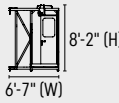

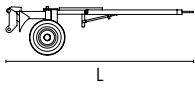
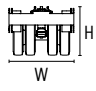
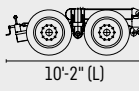
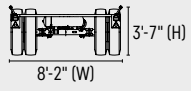

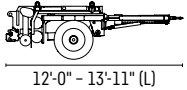
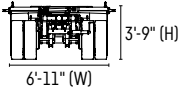

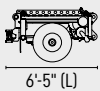
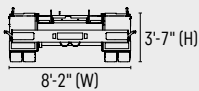

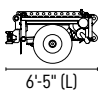
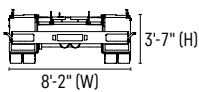

- 1 Standard erecting curves from 0 to 5 tower sections (164 ft) - Curvas de montaje estándar (0 - 5 tramos de torre) (164 ft)
- 2 Elevated erecting curve (+20 ft) using the example of 5 tower sections (164 ft) - Curva de montaje elevada (+20 ft): ejemplo con 5 tramos (164 ft)
- 3 Erecting curve 180 ft radius - Curva de montaje 180 ft alcances

Packing List - Lista de contenido

I ₁	Q ₁	Description - Descripción				
1	3	Tower section (without/with tower support*)				
2	2'	Tramo de torre (sin/con soporte de torre)				
			L	W	H	lbs
			8'-4"	3'-7"	3'-1"	1,440
			8'-4"	3'-7"	3'-1"	1,880*
3	1	Jib extension 115 ft - 131 ft Prolongación de pluma			3'-5" (H)	
			18'-1" (L)	3'-1" (W)		
				730 lbs		
4	1	Jib extension 131 ft - 148 ft Prolongación de pluma			3'-1" (H)	
			17'-1" (L)	3'-1" (W)		
				450 lbs		

* See instruction manual. - Ver manual de instrucción.

I₁ = Item - Posición Q₁ = Quantity - Cantidad

I ₁	Q ₁	Description · Descripción		
5	1	Jib extension 148 ft - 164 ft Prolongación de pluma	 17'-1" (L)	 2'-6" (H) 3'-1" (W)
			 360 lbs	
6	1	Jib extension 164 ft - 180 ft Prolongación de pluma	 19'-2" (L)	 2'-2" (H) 3'-1" (W)
			 290 lbs	
7	1	Cabin Cabina	 8'-8" (L)	 8'-2" (H) 6'-7" (W)
			 1,990 lbs	
8	1	Road transport axle front Eje delantero para transporte	 L	 W H
		Tra 100 KY 6 Tra 100 KY 6 A	L	W
			12'-0" - 13'-7"	4'-9" 3'-7" lbs 2,030 2,030
9	1	Road transport axle behind Tra 204 Eje trasero para transporte	 10'-2" (L)	 3'-7" (H) 8'-2" (W)
			 4,190 lbs	
10	1	Road transport axle front LiTRAX HS-121 Eje delantero para transporte	 12'-0" - 13'-11" (L)	 3'-9" (H) 6'-11" (W)
			 4,190 lbs	
11	1	Road transport axle behind LiTRAX HS-122 (without steering) Eje trasero para transporte (sin sistema de dirección)	 6'-5" (L)	 3'-7" (H) 8'-2" (W)
			 3,530 lbs	
12	1	Road transport axle behind LiTRAX HS-123 (with steering) Eje trasero para transporte (con sistema de dirección)	 6'-5" (L)	 3'-7" (H) 8'-2" (W)
			 3,750 lbs	

I₁ = Item · Posición Q₁ = Quantity · Cantidad

This information is supplied without liability.

Declinamos toda responsabilidad derivada de la información proporcionada.

Subject to technical modifications!

¡Sujeto a modificaciones sin previo aviso!