



## Installation Guide

Quality, Design and Innovation



[home.liebherr.com/fridge-manuals](http://home.liebherr.com/fridge-manuals)




# LIEBHERR


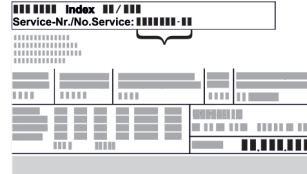

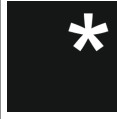


# General safety instructions

## Contents

1	General safety instructions.....	2
2	Installation conditions.....	3
2.1	Installation location.....	3
2.2	Position in the space.....	3
3	Installation dimensions.....	3
4	Ventilation requirements.....	4
5	Connection dimensions for the power supply.....	4
6	Transporting the appliance.....	4
6.1	Transporting the appliance for initial installation..	4
6.2	Transporting the appliance after initial installation.....	4
7	Unpacking the appliance.....	4
8	Mounting wall spacers*.....	5
9	Setting up the device.....	5
10	Setting up the appliance level.....	5
11	After setup.....	5
12	Setting up several appliances.....	5
13	Fitting the appliance in a kitchen unit.....	6
13.1	Niche dimensions for appliances with a recessed handle*.....	6
13.2	Niche dimensions for appliances with a handle*....	7
14	Disposal of packaging.....	7
15	**** freezer compartment door*.....	7
15.1	Moving the door hinge.....	7
16	Reversing the door.....	8
16.1	Removing the door.....	8
16.2	Reversing the freezer compartment door*.....	9
16.3	Moving the upper bearing parts to the other side..	9
16.4	Moving the lower bearing parts to the other side..	10
16.5	Moving the door bearing parts to the other side....	11
16.6	Moving the handles to the other side*.....	11
16.7	Fitting the door.....	12
16.8	Aligning the door.....	13
16.9	Fitting the covers.....	13
17	Connecting the appliance to the power supply....	13

The manufacturer is constantly working to improve all types and models. Therefore, please be aware that we reserve the right to make changes to the shape, equipment and technology.

Symbol	Explanation
	<b>Read instructions</b> Please read the information in these instructions carefully to understand all of the benefits of your new appliance.

Symbol	Explanation
	<b>Additional information online</b> The digital manual with supplemental information and in additional languages can be found online by scanning the QR code on the front page of this manual or by entering the service number at <a href="http://home.liebherr.com/fridge-manuals">home.liebherr.com/fridge-manuals</a> . The service number can be found on the serial tag:  <i>Fig. Example illustration</i>
	<b>Check appliance</b> Check all parts for transport damage. If you have any complaints, please contact your agent or customer service.
	<b>Differences</b> These instructions apply to a range of models, so there may be differences. Sections that apply to certain models only are indicated by an asterisk (*).
	<b>Instructions and results</b> Instructions are marked with a ►. Results are marked with a ▷.
	<b>Videos</b> Videos about the appliances are available on the YouTube channel of Liebherr-Hausgeräte.

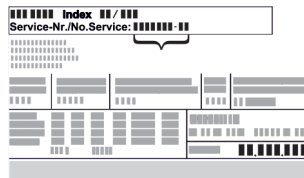
### Open-source licenses:

The appliance includes software components that make use of open-source licenses. You can find information on the open-source licenses to be used here: [home.liebherr.com/open-source-licenses](http://home.liebherr.com/open-source-licenses)

## 1 General safety instructions

- Please keep this assembly manual in a safe place so you can refer back to it at any time.
- If you pass the appliance on, please hand this assembly manual to the new owner.
- Read this assembly manual before installation and use in order to use the appliance safely and correctly. Follow the instructions, safety instructions and warning messages included at all times. They are important for ensuring you can operate and install the appliance safely and without any problems.
- First read the general safety instructions in the “General safety instructions” section of the **operating instructions**, which accompany these installation instructions, and follow them. If you cannot find the **operating instructions**, you can download the **operating instructions** from the internet by entering the service number at [home.liebherr.com/fridge-manuals](http://home.liebherr.com/fridge-manuals). The service number

can be found on the serial tag:



- Observe the warning messages and other detailed information in the other sections when installing the appliance:

	DANGER	indicates a hazardous situation, which if not avoided, will result in death or serious injury.
	WARNING	indicates a hazardous situation, which if not avoided, could result in death or serious injury.
	CAUTION	indicates a hazardous situation, which if not avoided, will result in minor or moderate injury.
	NOTICE	indicates a hazardous situation, which if not avoided, could result in damage to property.
	Note	indicates useful advice and tips.

## 2 Installation conditions

The installation conditions are crucial to ensure that you can operate your appliance safely, efficiently, and trouble-free.

- Observe all safety instructions.
- Observe the installation location and position in the room.



### WARNING

Danger of fire due to incorrect positioning!

If the power supply cable or plug touches the back of the appliance, the vibration can damage the power supply cable or the plug resulting in a short circuit.

- Make sure the power supply cable is not trapped under the appliance when you position the appliance.
- Install the appliance so that it does not touch any plugs or power cables.
- Do not connect any appliances to sockets in the area of the back of the appliance.
- Do **not** place and operate power strips/power distributors and other electronic devices (such as halogen transformers) at the back of the appliances.



### WARNING

Risk of fire due to moisture!

If live parts or the power cord get wet, this can cause a short circuit.

- The appliance is designed for use in enclosed spaces. Do not operate the appliance in open space or in damp areas or where there is spray.



### WARNING

Leaking refrigerant and oil!

Fire. The refrigerant contained within the appliance is environmentally friendly, but flammable. The oil contained within the appliance is flammable. Escaping refrigerant and oil can ignite if they are of high enough concentration and are exposed to an external heat source.

- Do not damage the pipelines of the coolant circuit and the compressor.

## 2.1 Installation location

- The optimum installation location is a dry and well-ventilated space.
- If the appliance is set up in a very humid environment, condensation may form on the outside of it. Always ensure good ventilation at the installation location.
- The more refrigerant there is in the appliance, the larger the room in which the appliance is installed must be. If the room is too small, a flammable gas/air mixture may form in the event of a leak. Per 8 g refrigerant, the installation space must be at least 1 m<sup>3</sup> in size. Information on the refrigerant contained can be found on the type plate inside the appliance.
- The floor at the installation location must be horizontal and level.

## 2.2 Position in the space

- Do not set up the appliance in an area with direct sunlight, next to a heating unit or similar.
- Always place the appliance with the rear of the appliance and the included wall spacers (see below) directly against the wall.\*
- Always place the rear of the appliance directly against the wall.\*
- Use in potentially explosive atmospheres is not permitted.

## 3 Installation dimensions

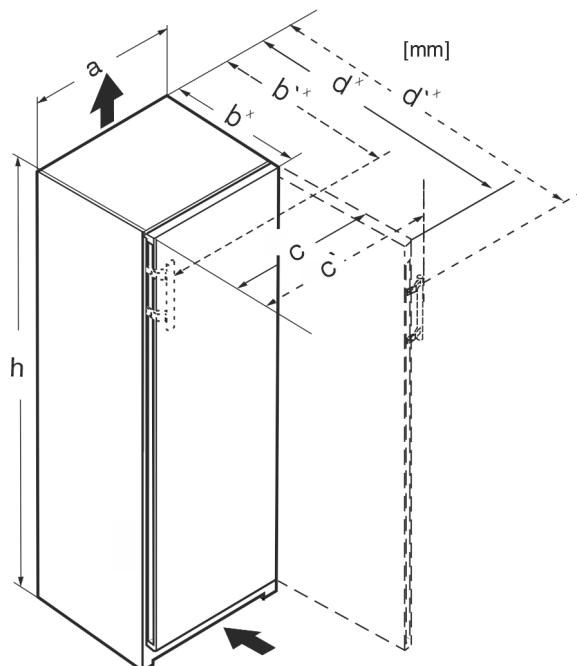


Fig. 1

# Ventilation requirements

	h	a	b	b'	c	c'	d	d'
R.. 42..	1255	597	675 <sup>x</sup>	—	609	—	1217 <sup>x</sup>	—
R... 46..	1455	597	675 <sup>x</sup>	—	609	—	1217 <sup>x</sup>	—
Kf 46Z00	1455	597	675 <sup>x</sup>	—	609	—	1217 <sup>x</sup>	—
R... 50..	1655	597	675 <sup>x</sup>	—	609	—	1217 <sup>x</sup>	—
R(B)... 52..	1855	597	675 <sup>x</sup>	—	609	—	1217 <sup>x</sup>	—
KB 52Vc20	1855	597	675 <sup>x</sup>	—	609	—	1217 <sup>x</sup>	—
Ksfe 52Z20	1855	597	675 <sup>x</sup>	—	609	—	1217 <sup>x</sup>	—
SR(B)... 5220	1855	597	675 <sup>x</sup>	—	609	—	1217 <sup>x</sup>	—
SR(B)sdh 5220	1855	597	675 <sup>x</sup>	719 <sup>x</sup>	609	654	1217 <sup>x</sup>	1222
SR... 5230	1855	597	675 <sup>x</sup>	719 <sup>x</sup>	609	654	1215 <sup>x</sup>	1222
RD... 52..	1855	597	675 <sup>x</sup>	—	609	—	1217 <sup>x</sup>	—

<sup>x</sup> For appliances with supplied wall spacers, the dimensions must be increased by 15 mm (see 8 Mounting wall spacers\*).

## 4 Ventilation requirements

### NOTICE

Risk of damage due to overheating in the case of insufficient ventilation!

In the case of insufficient ventilation, the compressor can be damaged.

- Make sure there is sufficient ventilation.
- Observe the ventilation requirements.

If the appliance is integrated into the kitchen cabinet, observe the following ventilation requirements:

- As a general rule, the larger the ventilation cross-section, the more energy-efficient the appliance operates.

### Note

If the space between the rear of the appliance and the wall is less than 51 mm, energy consumption may increase.\*

## 5 Connection dimensions for the power supply

The connection for the power supply is on the rear of the appliance. In order for you to be able to safely connect your appliance, make sure that the following requirements are met:

- ❑ Dimensions for the power supply connection are known and observed. See the table below.
- ❑ The connection to the power supply is made according to the instructions. (see 17 Connecting the appliance to the power supply)

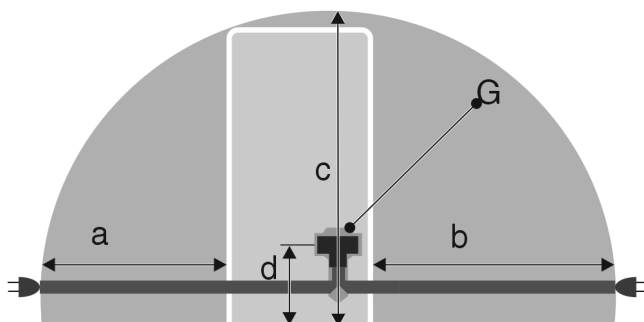


Fig. 2 Fridges

- (a) Maximum available length of the power cable
- (b) Maximum available length of the power cable
- (c) Maximum available vertical length of the power cable
- (d) Distance of the appliance plug to the floor
- (G) Appliance plug

For 600 mm wide appliances:

a	~ 1350 mm
b	~ 1800 mm
c	~ 2050 mm
d	~ 150 mm

## 6 Transporting the appliance

### 6.1 Transporting the appliance for initial installation

Make sure that the following requirements are fulfilled:

- ❑ Appliance is packaged.
- ❑ The appliance is upright.

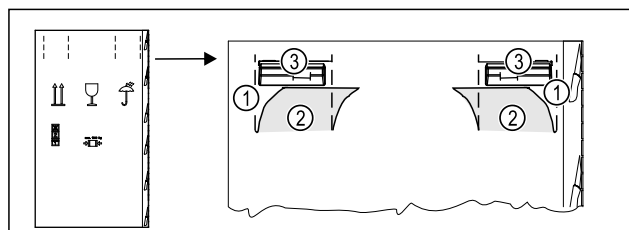


Fig. 3

- Press in the packaging carton at the top of the perforation Fig. 3 (1).
- Pull out the pressed-in flaps Fig. 3 (2).
- The right and left carrying handles Fig. 3 (3) are visible.
- Hold the appliance by the carrying handles Fig. 3 (3).
- Have two people transport the appliance.
- Unpack the appliance. (see 7 Unpacking the appliance)

### 6.2 Transporting the appliance after initial installation

Observe the following instructions if you want to transport or move the appliance after initial installation.

Make sure that the following requirements are fulfilled:

- ❑ Appliance is empty.
- ❑ The appliance is upright.
- ❑ The door is secured against undesired opening.
- Hold the appliance by the carrying handles.
- Hold the appliance by the carrying handles.
- Have two people transport the appliance.

After transporting it:

- Turn out the adjustable feet on the appliance.
- Align the appliance. (see 10 Setting up the appliance level)

## 7 Unpacking the appliance

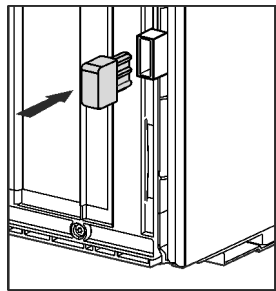
If the appliance is damaged check with the supplier immediately before connecting it.

- ▶ Check the appliance and packaging for damage during transport. If you suspect any damage, please contact your supplier immediately.
- ▶ Remove all materials that could prevent it from being installed properly or prevent proper ventilation from the back or the side panels of the appliance.
- ▶ Remove all protective films from the appliance. Do not use sharp or pointed objects for this.
- ▶ Remove the mains cable from the back of the appliance. Also remove the cable holder, otherwise there will be vibration noise!

## 8 Mounting wall spacers\*

With the wall spacer, your appliance will achieve the specified energy consumption and no condensation will form in high ambient humidity. The appliance will work properly without using the wall spacer, but with a slightly higher energy consumption.

If you use the wall spacer, the appliance depth increases by approx. 15 mm.\*



- ▶ Appliance with the wall spacer brackets provided: Install the wall spacer bracket on the rear side of the appliance on the left and right.

## 9 Setting up the device



### CAUTION

Risk of injury due to heavy appliance!

- ▶ Have two people transport the appliance to its installation site.



### WARNING

Risk of fire from short circuit!

- ▶ When setting up the appliance: Do not kink, trap, or damage the power cable.
- ▶ Do not operate the appliance with a defective power cable.



### WARNING

Danger of fire and damage!

- ▶ Do not place devices that give off heat, e.g. microwaves, toasters, etc. on the appliance.

Make sure that the following requirements are fulfilled:

- ☐ Only move the appliance when it is not loaded.
- ☐ Always have someone to help when installing the appliance.
- ▶ Remove the power cable from the enclosed package.
- ▶ Fully insert the IEC socket of the power cable completely into the appliance plug on the rear side of the appliance. Ensure the IEC socket is firmly in place.
- ▶ If necessary, use a string to route the power plug to a socket outlet that is freely accessible.

## 10 Setting up the appliance level

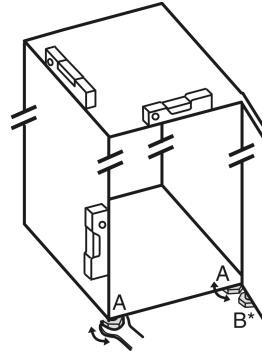


Fig. 4

- ▶ Unscrew the adjustable feet Fig. 4 (A) using the open-end wrench provided and a spirit level until the appliance is firmly aligned and level.



### CAUTION

Risk of injury or damage from the appliance tipping or the door falling open!

If the additional adjustable foot on the base support is not correctly positioned on the floor, there is a risk of the door falling open or the appliance tipping. This can lead to injury or property damage.

- ▶ Unscrew the additional adjustable foot on the swap bearing block as per the instructions.

- ▶ Unscrew the adjustable foot Fig. 4 (B) at the swap bearing block using the open-end wrench provided until it rests on the floor.

- ▶ Turn the adjustable foot Fig. 4 (B) another 90°.

- ▶ Appliance is aligned.

## 11 After setup

- ▶ Remove all transport packaging.
- ▶ Pull off the protective film from the outside of the housing.
- ▶ Pull off the protective film from the trim strips and drawer fronts.\*
- ▶ Take off the protective film from the stainless steel rear panel.
- ▶ Clean the appliance. (see operating instructions)
- ▶ Note the type (model, number), appliance designation, appliance/serial number, purchase date and dealer's address.

## 12 Setting up several appliances

The appliances were developed for different installation options. If you want to install several appliances side by side or on top of each other, make sure that the following requirements are met:

- ☐ Only install those appliances side by side or on top of each other that were developed for the purpose.
- ☐ Observe the instructions and the following table.

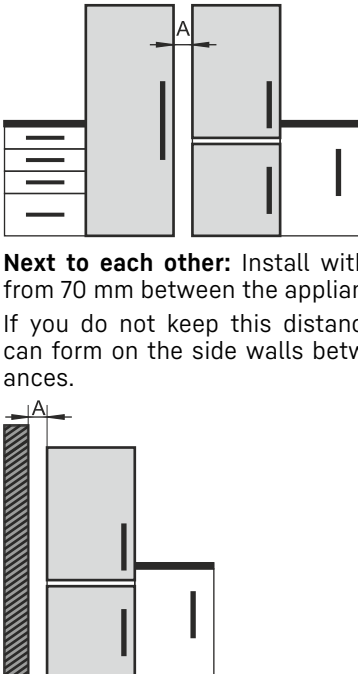
### NOTICE

Risk of damage caused by water condensate!

- ▶ Do not set up the appliance next to another refrigeration/freezer unit.



# Fitting the appliance in a kitchen unit

Model	Installation type
All models	individually
Models with a model designation that starts with <b>S...</b>	Side-by-side (SBS)
Models without side wall heating	 <p><b>Next to each other:</b> Install with a distance <b>A</b> from 70 mm between the appliances. If you do not keep this distance, condensate can form on the side walls between the appliances.</p> <p><b>At an outside wall:</b> Install with a distance <b>A</b> as for a side-by-side installation. If you do not keep this distance, condensate can form on the side wall of the appliance.</p>

Models and their installation type

Assemble the appliances according to the separate assembly instructions.

## 13 Fitting the appliance in a kitchen unit

You can fit the appliance in a kitchen unit. Observe the following installation conditions:

- If you install a top-mounted cabinet above the appliance, you must allow for a ventilation cross-section with the depth at the rear of the top-mounted cabinet accordingly.
- If you install the appliance with the hinges next to a wall, you must account for the distance to the side of the appliance.
- To ensure that the door can be opened completely, the appliance must protrude by the thickness of the front. Depending on the depth of the niche depth, the appliance may protrude further.



### WARNING

Risk of fire from short circuit!

- When setting up the appliance: Do not kink, trap, or damage the power cable.
- Do not operate the appliance with a defective power cable.

Make sure that the following requirements are fulfilled:

- ❑ Outlet is easily accessible and is not behind the appliance.
- ❑ Ventilation requirements are observed (see 4 Ventilation requirements).
- ❑ Connection dimensions are taken into account. (see 17 Connecting the appliance to the power supply)
- ❑ Wall spacer brackets are mounted.\*

## 13.1 Niche dimensions for appliances with a recessed handle\*

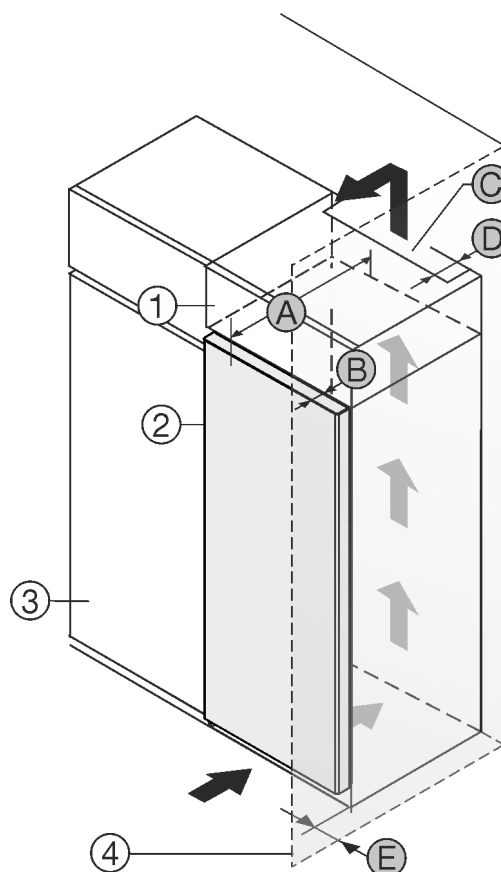


Fig. 5

- (1) Top-mounted cabinet
- (2) Appliance
- (3) Kitchen cabinet
- (4) Wall
- (A) Appliance depth
- (B) Door depth
- (C) Ventilation cross-section
- (D) Distance of the rear of the appliance
- (E) Distance to the side of the appliance

Appliances with recessed handle:	
A	675 mm <sup>x</sup>
B	75 mm
C	at least 300 cm <sup>2</sup>
D	at least 50 mm
E	at least 13 mm

Appliances with recessed handle and glass front/stone front:	
A	682 mm <sup>x</sup>
B	82 mm
C	at least 300 cm <sup>2</sup>

## 14 Disposal of packaging



### WARNING

Danger of suffocation from packaging materials and films!  
► Do not allow children to play with packaging materials.

The packaging is made from recyclable materials:

- Corrugated card/cardboard
  - Parts made of foamed polystyrene
  - Films and bags from polyethylene
  - Packing bands from polypropylene
  - Wood frame nailed together with a polyethylene window\*
- Take the packaging material to an official collection point.

## 15 \*\*\*\* freezer compartment door\*

It is very easy to reposition the hinge of the \*\*\*\* freezer compartment door if the main door hinge is swapped. If the main door of the appliance can be opened to more than 115° (1), you can open the freezer compartment without repositioning the hinge. If the opening angle (2) of the appliance door is less than this, the hinge must be repositioned.

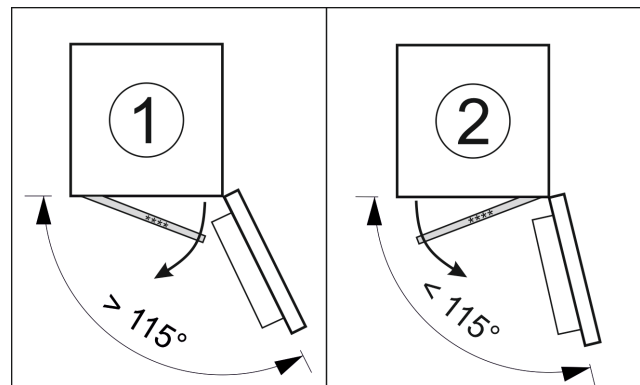


Fig. 7

### 15.1 Moving the door hinge

The slider for moving the door hinge is located on the back of the \*\*\*\* freezer compartment door at the bottom.

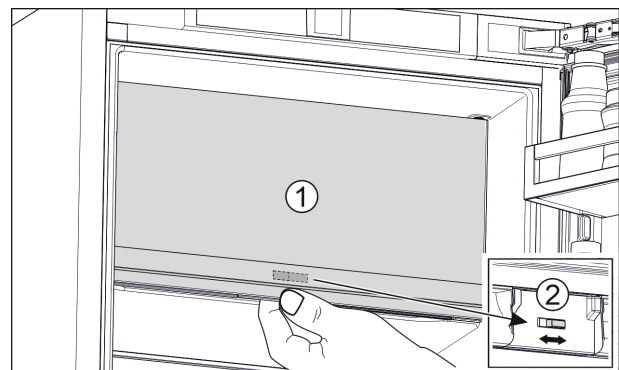


Fig. 8

- Close the \*\*\*\* freezer compartment door (1).
- Grab the \*\*\*\* freezer compartment door from below.
- Move the slider (2) either to the right or to the left.

Appliances with recessed handle and glass front/stone front:

D	at least 50 mm
E	at least 20 mm

\* For appliances with the wall spacers, the dimension increases by 15 mm.\*

### 13.2 Niche dimensions for appliances with a handle\*

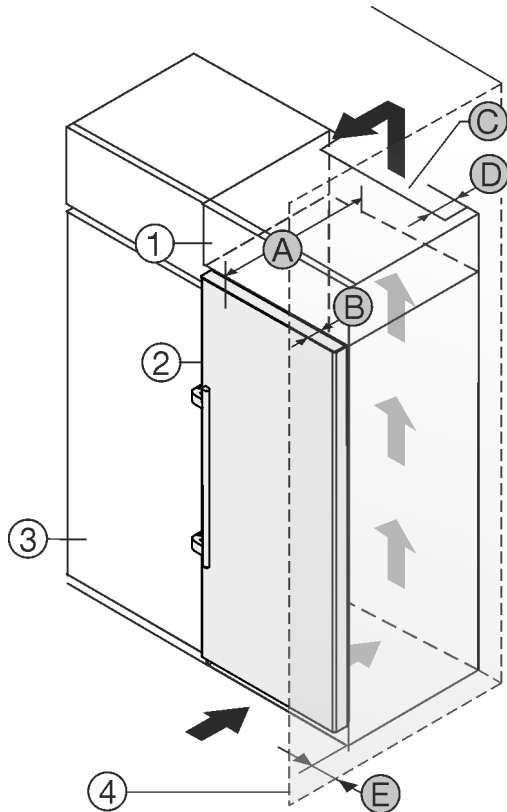


Fig. 6

- (1) Top-mounted cabinet
- (2) Appliance
- (3) Kitchen cabinet
- (4) Wall
- (A) Appliance depth
- (B) Door depth
- (C) Ventilation cross-section
- (D) Distance of the rear of the appliance
- (E) Distance to the side of the appliance

Appliances with handle:

A	675 mm <sup>x</sup>
B	75 mm
C	at least 300 cm <sup>2</sup>
D	at least 50 mm
E	at least 57 mm

\* For appliances with the wall spacers, the dimension increases by 15 mm.\*

# Reversing the door

## 16 Reversing the door

### Tools

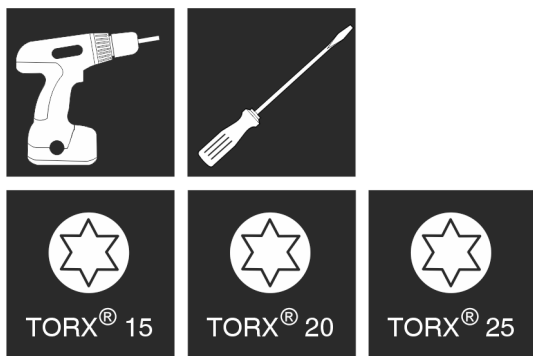


Fig. 9

### NOTICE

Risk of damage due to colliding doors!

Damage to the appliances if set up Side-by-Side. If you set up two appliances in a specific Side-by-Side arrangement, the door hinges of both appliances are specified from the factory.

► Side-by-Side setup: Do not change the door hinge.

These sections apply for appliances **without a soft stop mechanism**:

- ☐ For appliances **without** the a stop mechanism
- ☐ For all appliances

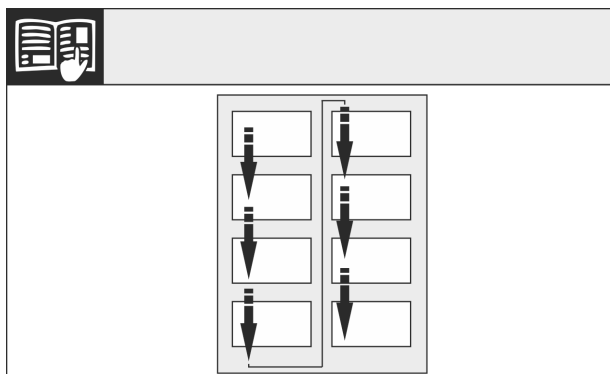


Fig. 10

Observe the reading direction.

### 16.1 Removing the door

#### Note

► To prevent food items from falling out, take all food out of the door racks before removing the door.

**For appliances without soft stop mechanism:**

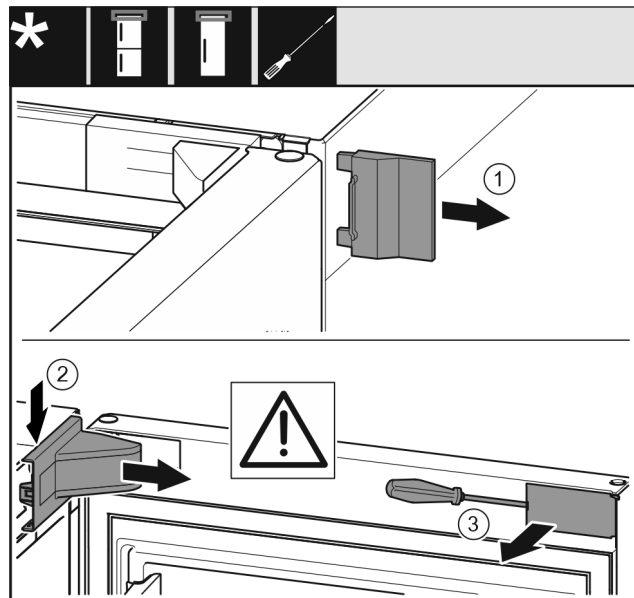


Fig. 11

► Open the door.

### NOTICE

Risk of damage!

If the door seal is damaged the door may not close properly and the level of cooling is insufficient.

► Do not damage the door seal with the screwdriver!

- Remove the outer cover Fig. 11 (1).
- Snap out the swap bearing block cover Fig. 11 (2) and remove it.
- Use a slotted screwdriver to snap out the faceplate Fig. 11 (3) and swivel it to the side.

**For all appliances:**



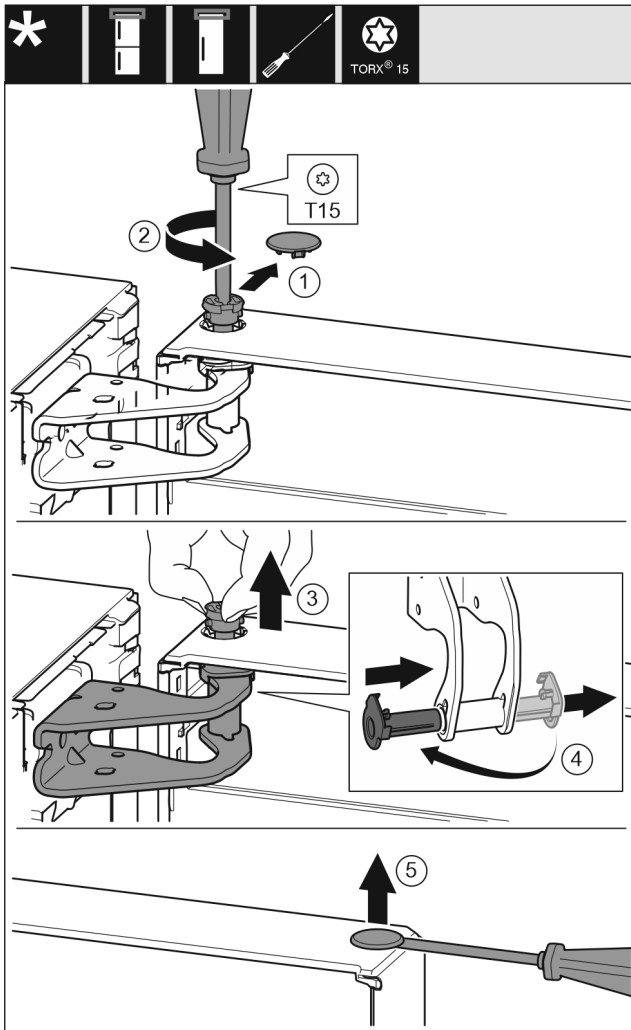


Fig. 12

## 16.3 Moving the upper bearing parts to the other side

For all appliances:



### WARNING

Danger of injury due to door falling out!

If the bearing parts are not screwed on tightly enough, the door may fall out. This can result in serious injuries. In addition, the door may not close causing the appliance to cool improperly.

- Screw on the bearing brackets/bearing pins tightly with 4 Nm.
- Check all screws and retighten them if necessary.

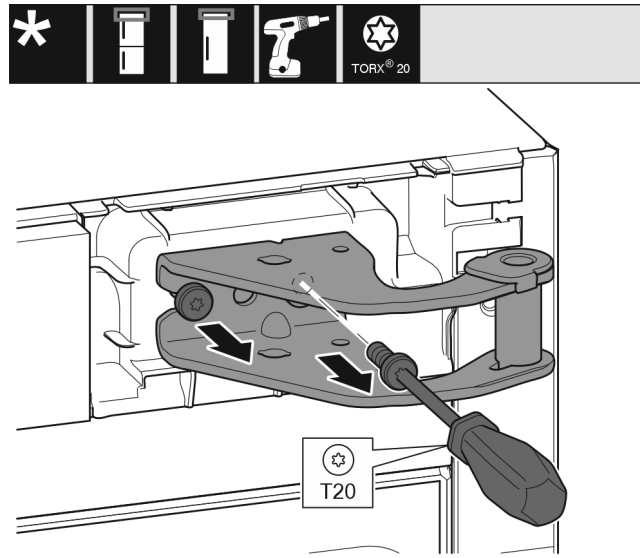


Fig. 14

- Pull out both screws with the screwdriver.
- Lift and remove the bearing bracket.



### CAUTION

Risk of injury if the door tips out!

- Keep a steady grip on the door.
- Set the door down carefully.
- Lift the door and place it to one side.

## 16.2 Reversing the freezer compartment door\*

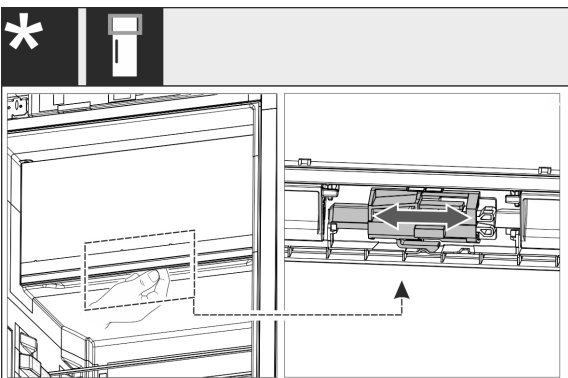


Fig. 13

- For single-door appliances: Switch the door hinge of the 4-star compartment by shifting the lever. The door of the 4-star compartment must be closed for this to happen. Shift the lever on the back of the door from below.

## Reversing the door

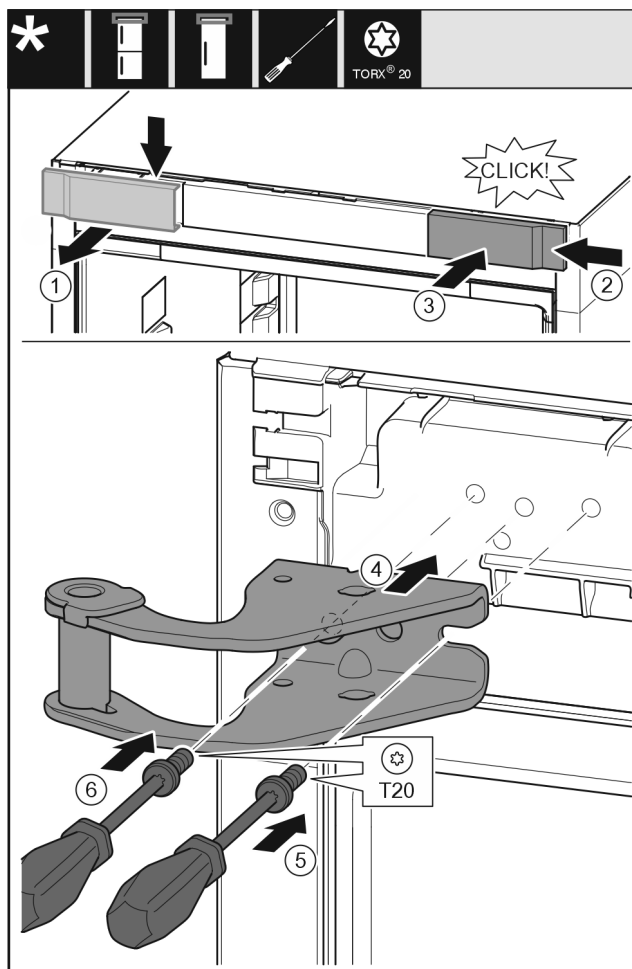


Fig. 15

- ▶ Remove the cover Fig. 15 (1) from the top towards the front.
- ▶ Hang the cover Fig. 15 (2) from the right turned by 180° to the other side.
- ▶ Snap in the cover Fig. 15 (3).
- ▶ Attach the top swap bearing block Fig. 15 (4).
- ▶ Attach and tighten the screw Fig. 15 (5) with a screwdriver.
- ▶ Attach and tighten the screw Fig. 15 (6) with a screwdriver.

### 16.4 Moving the lower bearing parts to the other side

For all appliances:



#### WARNING

Danger of injury due to door falling out!

If the bearing parts are not screwed on tightly enough, the door may fall out. This can result in serious injuries. In addition, the door may not close causing the appliance to cool improperly.

- ▶ Screw on the bearing brackets/bearing pins tightly with 4 Nm.
- ▶ Check all screws and retighten them if necessary.

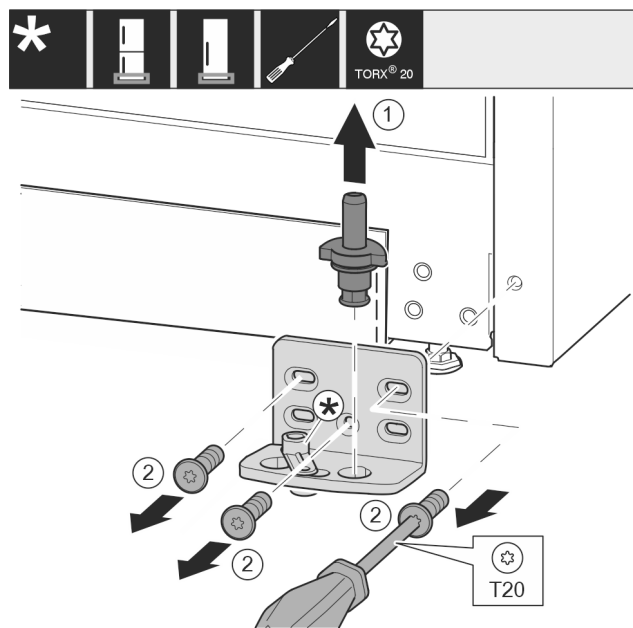


Fig. 16

- ▶ Completely pull out the bearing pin Fig. 16 (1) upward.
- ▶ Use a screwdriver to unscrew the screws Fig. 16 (2) and remove the swap bearing block.

For appliances without soft stop mechanism:

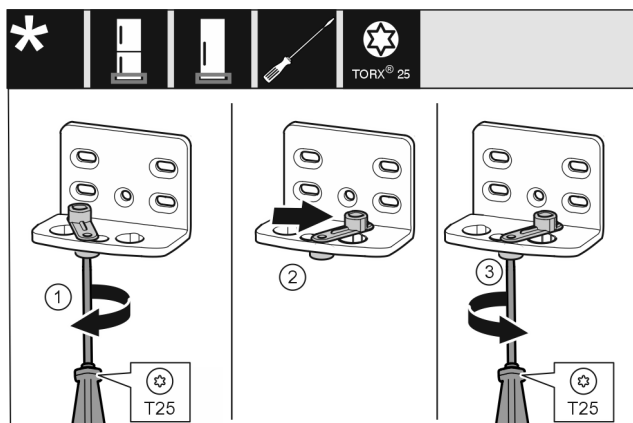


Fig. 17

- ▶ Loosen the screw Fig. 17 (1) with the screwdriver.
- ▶ Lift the door closing mechanism Fig. 17 (2) and turn it 90° to the right into the hole.
- ▶ Tighten the screw Fig. 17 (3) with the screwdriver.

For all appliances:

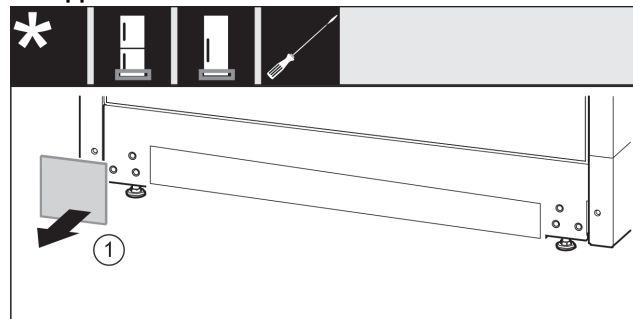


Fig. 18

- ▶ Remove the cover Fig. 18 (1).

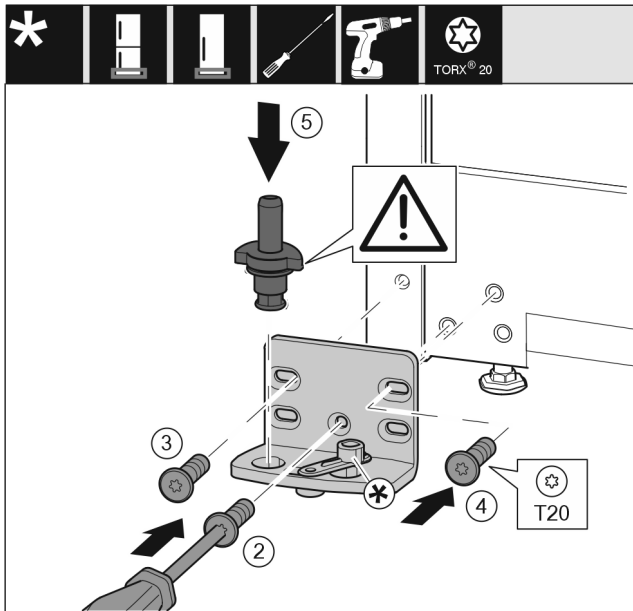


Fig. 19

- Attach the swap bearing block onto the other side and screw it on using a screwdriver. Start with the screw Fig. 19 (2) at the bottom center.
- Tighten screw Fig. 19 (3) and screw Fig. 19 (4).
- Insert the bearing pin Fig. 19 (5) completely. In the process, make sure that the latching cam shows towards the rear.

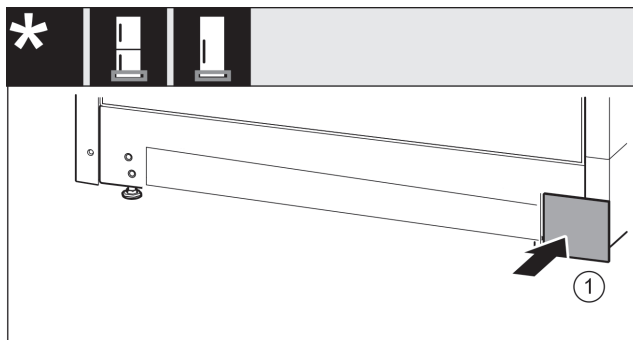


Fig. 20

- Re-attach the cover Fig. 20 (1) on the other side.

## 16.5 Moving the door bearing parts to the other side

For appliances without soft stop mechanism:



### WARNING

Danger of injury due to door falling out!  
If the bearing parts are not screwed on tightly enough, the door may fall out. This can result in serious injuries. In addition, the door may not close causing the appliance to cool improperly.

- Screw on the bearing brackets/bearing pins tightly with 4 Nm.
- Check all screws and retighten them if necessary.

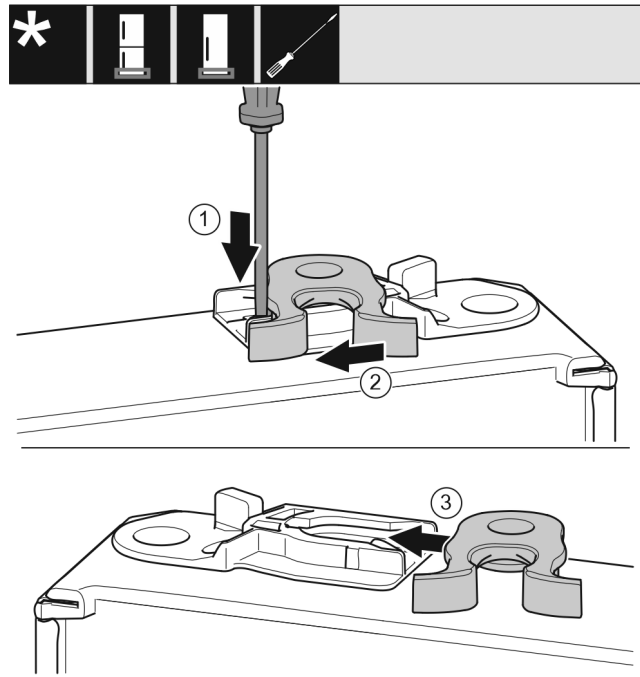


Fig. 21

- Underside of door faces upwards: Turn the door.
- Use a slotted screwdriver to push the tab Fig. 21 (1) downward.
- Pull the closing hook Fig. 21 (2) out of the guide on the other side.
- Push the closing hook Fig. 21 (3) to the other side in the guide.
- Upper side of door faces upwards: Turn the door.

## 16.6 Moving the handles to the other side\*

For all appliances:

## Reversing the door

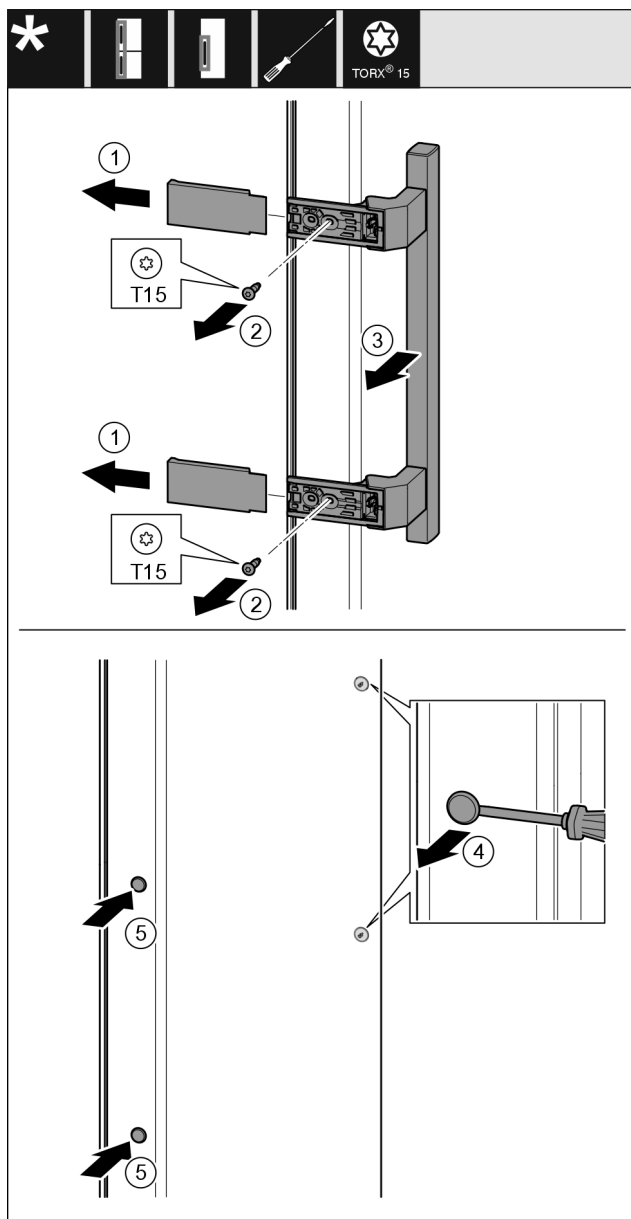


Fig. 22

- ▶ Pull off the cover Fig. 22 (1).
- ▶ Turn out the screws Fig. 22 (2) with the screw driver.
- ▶ Remove the handle Fig. 22 (3).
- ▶ Carefully lift the side plug Fig. 22 (4) with a slotted screwdriver and pull it out.
- ▶ Reinsert the plug Fig. 22 (5) on the other side.

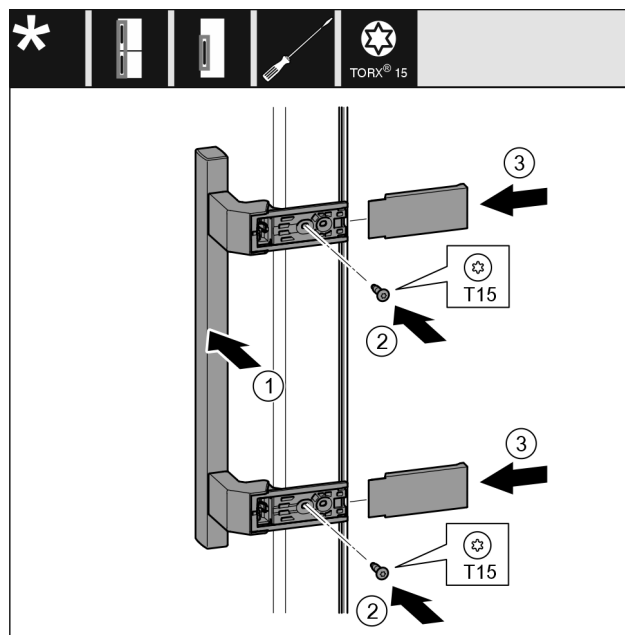


Fig. 23

- ▶ Attach the handle on Fig. 23 (1) the opposite side.
- ▶ The screw holes must be exactly above each other.
- ▶ Tighten the screws Fig. 23 (2) with the screwdriver.
- ▶ Attach the covers Fig. 23 (3) on the sides and slide them on.
- ▶ Ensure that they latch into place correctly.

## 16.7 Fitting the door

For all appliances:

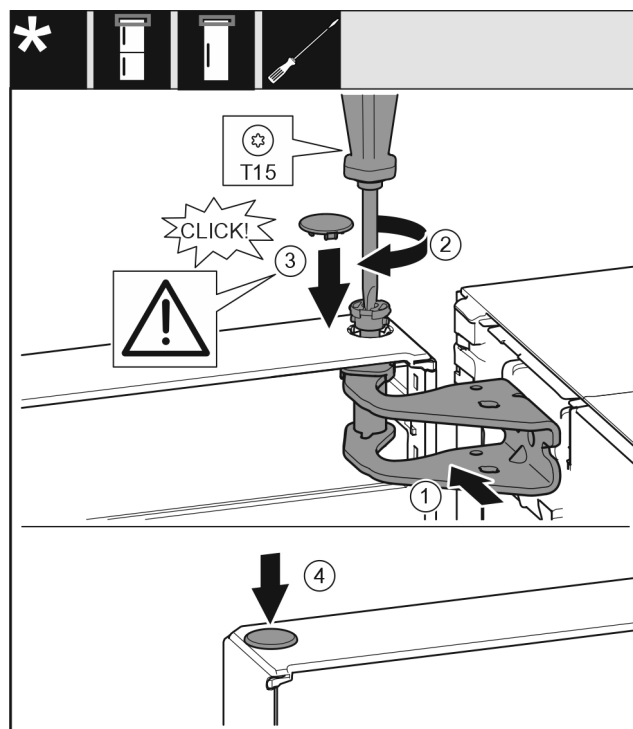


Fig. 24

- ▶ Place the door on the bottom bearing pins.
- ▶ Align the top of the door with opening in the bearing bracket. Fig. 24 (1)
- ▶ Insert the pin Fig. 24 (2) and tighten it with the screwdriver.
- ▶ Mount the safety cover Fig. 24 (3) to protect the door: Insert the safety cover and check whether it is positioned on the door. If so, insert the pin completely.
- ▶ Insert the plug Fig. 24 (4)

## 16.8 Aligning the door

For all appliances:



### WARNING

Danger of injury due to door falling out!

If the bearing parts are not screwed on tightly enough, the door may fall out. This can result in serious injuries. In addition, the door may not close causing the appliance to cool improperly.

- ▶ Screw the bearing brackets on firmly with 4 Nm.
- ▶ Check all screws and retighten them if necessary.

- ▶ Align the doors flush with the appliance housing using the two slots in the lower bearing bracket, if needed. To do this undo the middle screw in the bottom bearing bracket with the T20 tool supplied. Undo the remaining screws a little with the T20 tool or with a T20 screwdriver and align via the slots.
- ▶ Prop up the door: Screw out the adjustable foot on the bearing bracket using the open-ended wrench SW10 until it comes into contact with the floor, then turn an additional 90°.

## 16.9 Fitting the covers

For appliances without soft stop mechanism:

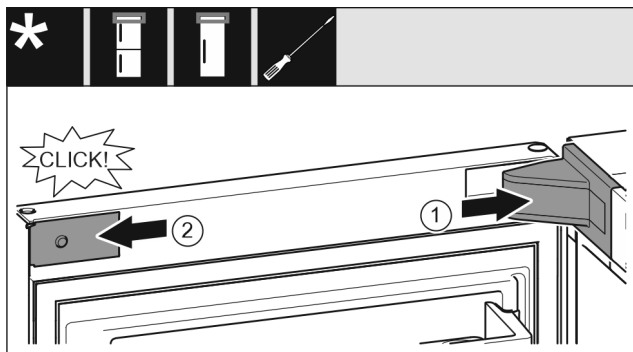


Fig. 25

The door is open 90°.

- ▶ Position the swap bearing block cover Fig. 25 (1) and snap it in. You may need to push it carefully apart.
- ▶ Attach the panel Fig. 25 (2) from the side and snap it on.

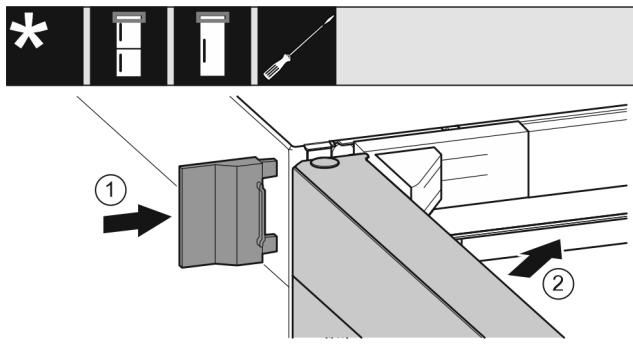


Fig. 26

- ▶ Slide on the outer cover Fig. 26 (1).
- ▶ Close the top door Fig. 26 (2).

## 17 Connecting the appliance to the power supply



### WARNING

Danger of electric shock and injury due to damaged appliance or damaged mains cable!

Cuts and fatal injury. If the appliance or the mains cable is damaged during transport, you may be electrocuted. You could also cut yourself on damaged parts of the appliance housing.

- ▶ Check the appliance and the mains cable for damage after transport.
- ▶ Never put the appliance into operation if the appliance or the mains cable are damaged.
- ▶ Contact Customer Service.

You can connect your appliance to the mains using the power cable supplied separately. The mains power cable has an appliance coupler at one end and a mains plug at the other end.

Connect your appliance to the mains using the power cable included. The power cable has a mains plug at the free end.

Make sure that the following requirements are fulfilled:

- The appliance and power cable are undamaged.
- The appliance is set up in accordance with the regulations. (see 8 Mounting wall spacers\*)
- Requirements for the electrical connection are met.
- Dimensions for connection in accordance with regulations are known and observed. (see 5 Connection dimensions for the power supply)
- Mains voltage and frequency correspond to the specifications on the type plate.
- The socket is grounded and fused in accordance with regulations.
- The tripping current for the fuse is between 10 A and 16 A.
- Outlet is easily accessible and is not behind the appliance. (see 5 Connection dimensions for the power supply)

### NOTICE

Danger of damage to incorrect operation!

Damage to the electrical components of the appliance.

- ▶ Only use the supplied power cable.



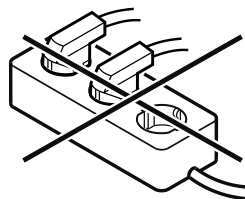
### WARNING

Danger of fire due to incorrect connection!

Burns.

Damage to the appliance.

- ▶ Do not use an extension cord.
- ▶ Do not use a multipoint connector strip.



### NOTICE

Danger of damage to incorrect connection!

Damage to the appliance.

- ▶ Do not connect the appliance to a stand-alone inverter, e.g. solar power systems and petrol generators.

## Connecting the appliance to the power supply

---

- ▶ Connect the mains plug of the power cord to the power supply. Ensure the main plug is firmly plugged into the outlet.
- ▶ Connect the mains plug of the power cord to the power supply. Ensure the main plug is firmly plugged into the outlet.
- ▷ The Liebherr logo appears in the display.
- ▷ The display switches to the standby symbol.
- ▷ If no action is taken within 60 seconds: Standby symbol fades or disappears.
- ▷ Appliance is connected. For initial commissioning, see the next chapter or the operating instructions.







[home.liebherr.com/fridge-manuals](https://home.liebherr.com/fridge-manuals)

**EN** Refrigerator

Issue date: 20250926

**Part number index: 7086333-01**

Liebherr-Hausgeräte Marica EOOD  
Bezirk Plovdiv  
4202 Radinovo  
Bulgarien