

---

# R 914 Compact Litronic

---

## LIEBHERR

Crawler Excavator



**Generation**  
6

**Operating weight**  
14,900–17,450 kg

**Engine**  
90 kW / 122 HP  
Stage V

**Bucket capacity**  
0.32–0.80 m<sup>3</sup>

# Experience the progress R 914 Compact

---

## Maintenance

- Servicing concept, with service points accessible from ground level
- Engine oil level and filling nozzle accessible from ground level
- Standard shut-off valve on hydraulic tank outlet

## Compactness

- Short tail swing radius of 1.55m for increased safety and flexibility on work sites
- The perfect machine for narrow sites – ideal for urban applications and on motorways

## Safety

- Panoramic visibility with no obstructions and camera on the rear and the right side equipment for enhanced safety
- Lifiable console for easy and safe access to cab
- ROPS-certified cab structure: rollover protection
- Emergency exit via the rear cab window
- Right window and windshield in laminated and tinted glass





## Equipment

- Large choice of types and sizes of equipment
- Longer lifespan of components and higher productivity thanks to automatic centralised lubrication system
- Safety check valves for hoist and stick cylinders
- Large choice of tools and teeth to suit all applications

## Engine

- New engine that conforms with the Stage V European exhaust emissions standard
- Automatic idle-stop

## Comfort

- Spacious, air-conditioned work space
- Airsprung seat with vertical and horizontal suspension
- Easy-to-use high resolution 7" colour touchscreen
- Completely retractable front cab window

## Undercarriage

- Robust, reliable X-frame undercarriage, easy to secure thanks to its integrated eyelets
- Easy maintenance
- Several levelling blades available
- Optional rubber track pads for urban application
- Possibility to anchor the machine with the blade
- Maintenance-free travel gear and track rollers with lifetime lubrication

# Technical data



## Engine

<b>Rating per ISO 9249</b>	90 kW (122 HP) at 1,800 RPM
<b>Model</b>	Deutz TCD3.6L4
<b>Type</b>	4 cylinder in-line
<b>Bore</b>	98 mm
<b>Stroke</b>	120 mm
<b>Displacement</b>	3.6 l
<b>Engine operation</b>	4-stroke diesel Common-Rail injection system Turbo-charged and after-cooler Reduced emissions
<b>Exhaust gas treatment</b>	Stage V DOC + DPF + SCR Deutz
<b>Air cleaner</b>	Dry-type air cleaner with pre-cleaner, primary and safety elements
<b>Fuel tank</b>	175 l
<b>Urea tank</b>	20 l
<b>Electrical system</b>	
<b>Voltage</b>	24 V
<b>Batteries</b>	2 x 135 Ah / 12 V
<b>Alternator</b>	Three-phase current 28 V / 80 A
<b>Engine idling</b>	Sensor controlled



## Cooling system

<b>Engine</b>	Water-cooled Compact cooling system consisting cooling unit for water, hydraulic oil and charge air with stepless thermostatically controlled fan, fans for radiator cleaning can be completely folded away
---------------	--



## Hydraulic controls

<b>Power distribution</b>	Via control valves with integrated safety valves, simultaneous and independent actuation of undercarriage, swing drive and equipment
<b>Servo circuit</b>	
<b>Equipment and swing</b>	With hydraulic pilot control and proportional joystick levers
<b>Travel</b>	Electro-proportional via foot pedal
<b>Additional functions</b>	Via switch or electro-proportional foot pedals
<b>Proportional control</b>	Proportionally acting transmitters on the joysticks for additional hydraulic functions



## Hydraulic system

<b>Hydraulic pump</b>	Liebherr axial piston variable displacement pump
<b>For equipment and travel drive</b>	
<b>Max. flow</b>	300 l/min.
<b>Max. pressure</b>	350 bar
<b>Hydraulic pump regulation and control</b>	Liebherr-Synchron-Comfort-system (LSC) with electronic engine speed sensing regulation, pressure and flow compensation, torque controlled swing drive priority
<b>Hydraulic tank</b>	100 l
<b>Hydraulic system</b>	max. 230 l
<b>Filtration</b>	1 main return filter with integrated partial micro filtration (5 µm)
<b>MODE selection</b>	Adjustment of engine and hydraulic performance via a mode pre-selector to match application, e.g. for especially economical and environmentally friendly operation or for maximum digging performance and heavy-duty jobs
<b>S (Sensitive)</b>	Mode for precision work and lifting through very sensitive movements
<b>E (Eco)</b>	Mode for especially economical and environmentally friendly operation
<b>P (Power)</b>	Mode for high performance with low fuel consumption
<b>Engine speed and performance setting</b>	Stepless adjustment of engine output and hydraulic power via engine speed
<b>Option</b>	Tool Control: 20 pre-adjustable pump flows and pressures for add-on attachments



## Swing drive

<b>Drive</b>	Liebherr axial piston motor with integrated brake valve and torque control
<b>Swing ring</b>	Liebherr, sealed race ball bearing swing ring, internal teeth
<b>Swing speed</b>	0-10.0 RPM stepless
<b>Swing torque</b>	51 kNm
<b>Holding brake</b>	Wet multi-disc (spring applied, pressure released)



## Cab

<b>Cab</b>	ROPS safety cab structure (roll-over protection system) with individual windscreens or featuring a slide-in subpart under the ceiling, headlights integrated in the ceiling, a door with a sliding window (can be opened on both sides), large stowing and depositing possibilities, shock-absorbing suspension, sound damping insulating, tinted laminated safety glass, separate window shades for the sunroof window and windscreen
<b>Operator's seat Standard</b>	Air cushioned operator's seat with 3D-adjustable armrests, headrest, lap belt, seat heater, manual weight adjustment, adjustable seat cushion inclination and length and mechanical lumbar vertebrae support
<b>Operator's seat Comfort (Option)</b>	In addition to operator's seat standard: lockable horizontal suspension, automatic weight adjustment, adjustable suspension stiffness, pneumatic lumbar vertebrae support and passive seat climatisation with active coal
<b>Operator's seat Premium (Option)</b>	In addition to operator's seat comfort: active electronic weight adjustment (automatic readjustment), pneumatic low frequency suspension and active seat climatisation with active coal and ventilator
<b>Arm consoles</b>	Oscillating consoles with seat, tiltable console left
<b>Operation and displays</b>	Large high-resolution operating unit, intuitive, colour display with touchscreen, video-compatible, numerous setting, control and monitoring options, e.g. air conditioning control, fuel consumption, machine and attachment parameters
<b>Air-conditioning</b>	Automatic air-conditioning, recirculated air function, fast de-icing and demisting at the press of a button, air vents can be operated via a menu. Recirculated air and fresh air filters can be easily replaced and are accessible from the ground level. Heating-cooling unit, designed for extreme outside temperatures, sensors for solar radiation The air conditioning system contains fluorinated greenhouse gases
Refrigerant	R134a
Global warming potential	1,430
Quantity at 25 °C*	1,260 g
CO <sub>2</sub> equivalent	1.80t
<b>Vibration emission**</b>	
Hand / arm vibrations	< 2.5 m/s <sup>2</sup> , according with ISO 5349-1:2001
Whole-body vibrations	< 0.5 m/s <sup>2</sup>
Measuring inaccuracy	According with standard EN 12096:1997
<b>Noise emission</b>	
ISO 6396	70 dB(A) = L <sub>PA</sub> (inside cab)
2000/14/EC	100 dB(A) = L <sub>WA</sub> (surround noise)



## Undercarriage

<b>Drive</b>	Liebherr compact planetary reduction gear with Liebherr axial piston motor per side of undercarriage
<b>Transmission</b>	Liebherr compact planetary reduction gear
<b>Maximum travel speed</b>	3.1 km/h low range 6.8 km/h high range
<b>Drawbar pull on crawler</b>	154 kN
<b>Track components</b>	B4, maintenance-free
<b>Track rollers / Carrier rollers</b>	8 / 2
<b>Tracks</b>	Sealed and greased
<b>Track pads</b>	Triple grouser
<b>Holding brake</b>	Wet multi-disc (spring applied, pressure released)
<b>Brake valves</b>	Integrated into travel motor
<b>Lashing eyes</b>	Integrated



## Equipment

<b>Type</b>	High-strength steel plates at highly-stressed points for the toughest requirements. Complex and stable mountings of equipment and cylinders
<b>Hydraulic cylinders</b>	Liebherr cylinders with seal and guidance systems
<b>Bearings</b>	Sealed, low maintenance



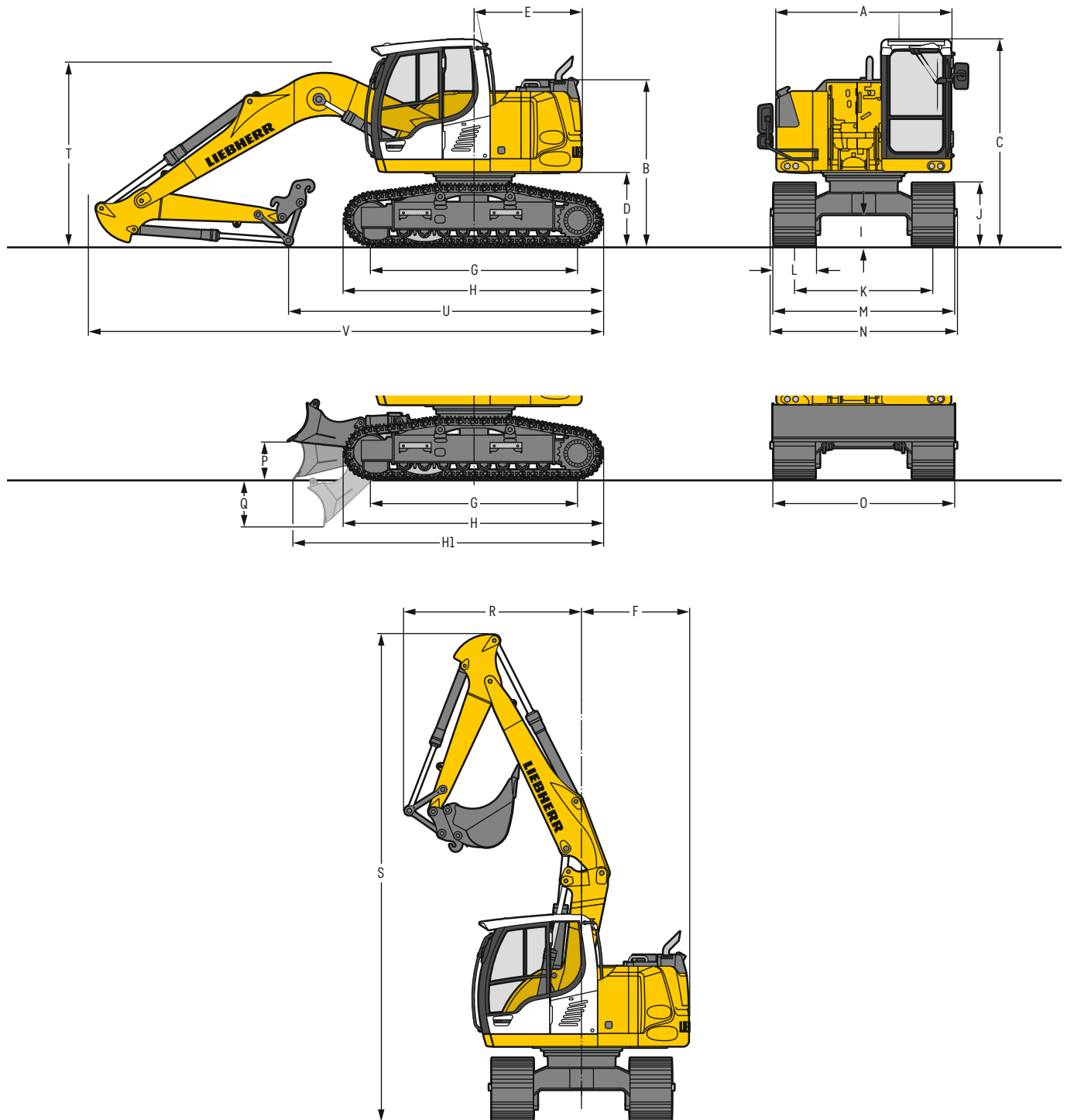
## Complete machine

<b>Lubrication</b>	Liebherr central lubrication system for uppercarriage and equipment, automatically
--------------------	--

\* Valid for standard machine without operator's cab elevation and without height adjustable cab

\*\* For the risk assessment according to 2002/44/EC see ISO/TR 25398:2006

# Dimensions



		<b>S</b>			<b>mm</b>			<b>S with blade</b>			<b>mm</b>		
<b>A</b>	Uppercarriage width				2,525						2,525		
<b>B</b>	Uppercarriage height				2,395						2,395		
<b>C</b>	Cab height				2,980						2,980		
<b>D</b>	Counterweight ground clearance				1,050						1,050		
<b>E</b>	Rear-end length				1,550						1,550		
<b>F</b>	Tail swing radius				1,550						1,550		
<b>G</b>	Wheelbase				3,000						3,000		
<b>H</b>	Undercarriage length				3,730						3,730		
<b>H1</b>	Undercarriage length with blade				-						4,555		
<b>I</b>	Undercarriage ground clearance				450						450		
<b>J</b>	Track height				905						905		
<b>K</b>	Track gauge				2,000						2,000		
<b>L</b>	Track pad width				500	600	700				500	600	700
<b>M</b>	Width over tracks				2,500	2,600	2,700				2,500	2,600	2,700
<b>N</b>	Width over steps				2,480	2,480	2,680 <sup>1)</sup>				2,480	2,480	2,680 <sup>1)</sup>
<b>O</b>	Blade width				-						2,500	2,600	2,700
<b>P</b>	Max. blade height				-						550		
<b>Q</b>	Max. blade depth				-						690		

<sup>1)</sup> width with removable steps

		<b>Stick length</b>	<b>Mono boom 4.60 m</b>	<b>Two-piece boom 4.85 m</b>	<b>Mono boom offset 4.30 m</b>	<b>Two-piece boom offset 4.90 m</b>
		<b>m</b>	<b>with quick coupler</b>	<b>with quick coupler</b>	<b>with quick coupler</b>	<b>with quick coupler</b>
			<b>mm</b>	<b>mm</b>	<b>mm</b>	<b>mm</b>
<b>R</b>	Front swing radius	2.05	2,400	2,550	2,400	2,950
		2.25	2,200	2,450	2,200	2,800
		2.45	2,050	2,300	2,050	2,700
		2.65	2,050	2,150	2,700	2,550
<b>S</b>	Height with boom up		6,800	7,050	6,600	7,050
		2.05	2,650	2,700	2,450	2,700
		2.25	2,700	2,750	2,450	2,750
		2.45	2,700	2,800	2,450	2,800
<b>T</b>	Boom height	2.65	2,750	2,850	2,500	2,850
		2.05	4,550	5,100	6,550	5,000
		2.25	4,400	4,950	6,350	4,850
		2.45	4,200	4,800	6,200	4,700
<b>U</b>	Length on ground	2.65	4,000	4,650	6,050	4,550
		2.05	7,450	7,800	7,150	7,800
		2.25	0.50 m <sup>3</sup>	0.50 m <sup>3</sup>	0.50 m <sup>3</sup>	0.50 m <sup>3</sup>
		2.45	0.50 m <sup>3</sup>	0.50 m <sup>3</sup>	0.50 m <sup>3</sup>	0.50 m <sup>3</sup>
<b>V</b>	Overall length		7,450	7,800	7,150	7,800
		2.05	0.50 m <sup>3</sup>	0.50 m <sup>3</sup>	0.50 m <sup>3</sup>	0.50 m <sup>3</sup>
		2.25	0.50 m <sup>3</sup>	0.50 m <sup>3</sup>	0.50 m <sup>3</sup>	0.50 m <sup>3</sup>
		2.45	0.50 m <sup>3</sup>	0.50 m <sup>3</sup>	0.50 m <sup>3</sup>	0.50 m <sup>3</sup>
	Bucket		0.50 m <sup>3</sup>	0.50 m <sup>3</sup>	0.50 m <sup>3</sup>	0.50 m <sup>3</sup>

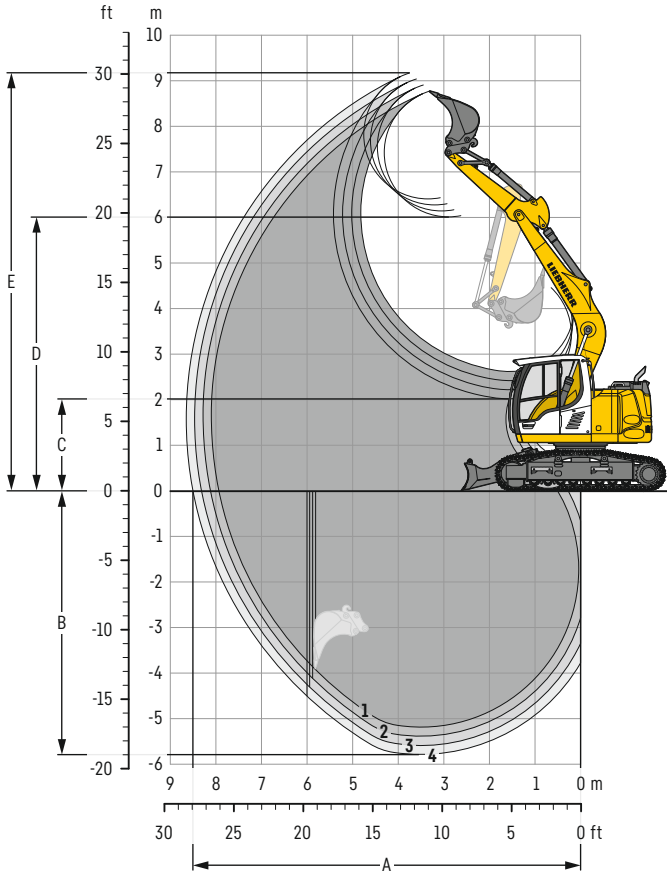
## Transport dimensions

### removable elements disassembled

		<b>Mono boom 4.60 m</b>			<b>Two-piece boom 4.85 m</b>			<b>Mono boom offset 4.30 m</b>			<b>Two-piece boom offset 4.90 m</b>		
		<b>mm</b>			<b>mm</b>			<b>mm</b>			<b>mm</b>		
Pad width		500	600	700	500	600	700	500	600	700	500	600	700
Transport width		2,525	2,600	2,700	2,525	2,600	2,700	2,525	2,600	2,700	2,525	2,600	2,700
	<b>Undercarriage</b>	<b>S</b>	<b>S</b>	<b>S</b>	<b>S</b>	<b>S</b>	<b>S</b>	<b>S</b>	<b>S</b>	<b>S</b>	<b>S</b>	<b>S</b>	<b>S</b>
		<b>mm</b>	<b>with blade</b>	<b>mm</b>	<b>mm</b>	<b>with blade</b>	<b>mm</b>	<b>mm</b>	<b>with blade</b>	<b>mm</b>	<b>mm</b>	<b>with blade</b>	<b>mm</b>
Transport length		7,450	8,300	7,800	7,800	8,650	7,150	7,150	8,000	7,800	7,800	8,650	8,650
Transport height		2,980		2,980		2,980		2,980		2,980		2,980	

# Backhoe bucket

with mono boom 4.60 m



## Digging envelope

with quick coupler	1	2	3	4	
Stick length	m	2.05	2.25	2.45	2.65
A Max. reach at ground level	m	7.95	8.15	8.30	8.50
B Max. digging depth	m	5.20	5.40	5.60	5.80
C Min. dumping height	m	2.60	2.40	2.20	2.00
D Max. dumping height	m	6.05	6.15	6.30	6.40
E Max. cutting height	m	8.75	8.90	9.05	9.15

## Forces

without quick coupler	1	2	3	4	
Stick digging force (ISO 6015)	kN	70	66	62	59
Bucket digging force (ISO 6015)	kN	89	89	89	89
Stick digging force (SAE J1179)	kN	68	64	60	57
Bucket digging force (SAE J1179)	kN	80	80	80	80

## Operating weight and ground pressure

The operating weight includes the basic machine with counterweight 2.8t, mono boom 4.60m, stick 2.25 m, quick coupler SWA 33 and bucket 0.50 m<sup>3</sup> (340 kg).

Undercarriage	S				
Pad width	mm	500	600	700	900
Weight	kg	14,900	15,100	15,350	15,750
Ground pressure	kg/cm <sup>2</sup>	0.46	0.39	0.34	0.27

Undercarriage	S with blade			
Pad width	mm	500	600	700
Weight	kg	16,100	16,300	16,550
Ground pressure	kg/cm <sup>2</sup>	0.49	0.42	0.36

**Buckets** Machine stability per ISO 10567\* (75% of tipping capacity)

	Cutting width mm	Capacity ISO 7451 m <sup>3</sup>	Weight <sup>3)</sup> kg	Weight <sup>4)</sup> kg	S undercarriage (with track pads 600 mm)								S undercarriage with blade (with track pads 600 mm)							
					Stick length (m)								Stick length (m)							
					without quick coupler				with quick coupler				without quick coupler				with quick coupler			
	2.05	2.25	2.45	2.65	2.05	2.25	2.45	2.65	2.05	2.25	2.45	2.65	2.05	2.25	2.45	2.65				
STD <sup>1)</sup>	500	0.32	230	250	▲	▲	▲	▲	▲	▲	▲	▲	▲	▲	▲	▲	▲			
	550	0.29	250	260	▲	▲	▲	▲	▲	▲	▲	▲	▲	▲	▲	▲	▲			
	650	0.36	270	290	▲	▲	▲	▲	▲	▲	▲	▲	▲	▲	▲	▲	▲			
	850	0.50	320	340	▲	▲	▲	▲	▲	▲	▲	▲	▲	▲	▲	▲	▲			
	1,050	0.65	360	380	▲	▲	▲	▲	▲	▲	▲	▲	▲	▲	▲	▲	▲			
	1,250	0.80	420	430	■	■	▲	■	■	▲	▲	■	▲	▲	■	■				
HD <sup>2)</sup>	500	0.32	260	280	▲	▲	▲	▲	▲	▲	▲	▲	▲	▲	▲	▲	▲			
	550	0.29	280	290	▲	▲	▲	▲	▲	▲	▲	▲	▲	▲	▲	▲	▲			
	650	0.36	300	320	▲	▲	▲	▲	▲	▲	▲	▲	▲	▲	▲	▲	▲			
	850	0.50	360	380	▲	▲	▲	▲	▲	▲	▲	▲	▲	▲	▲	▲	▲			
	1,050	0.65	420	430	▲	▲	▲	▲	▲	▲	▲	▲	▲	▲	▲	▲	▲			
	1,250	0.80	480	490	■	▲	▲	■	■	▲	■	▲	▲	▲	■	■				

\* Indicated loads are based on ISO 10567, at maximum reach, and may be swung 360° on firm and even ground

<sup>1)</sup> Standard bucket with teeth UNI-35-3

<sup>2)</sup> HD bucket with teeth UNI-35-3

<sup>3)</sup> Bucket for direct mounting

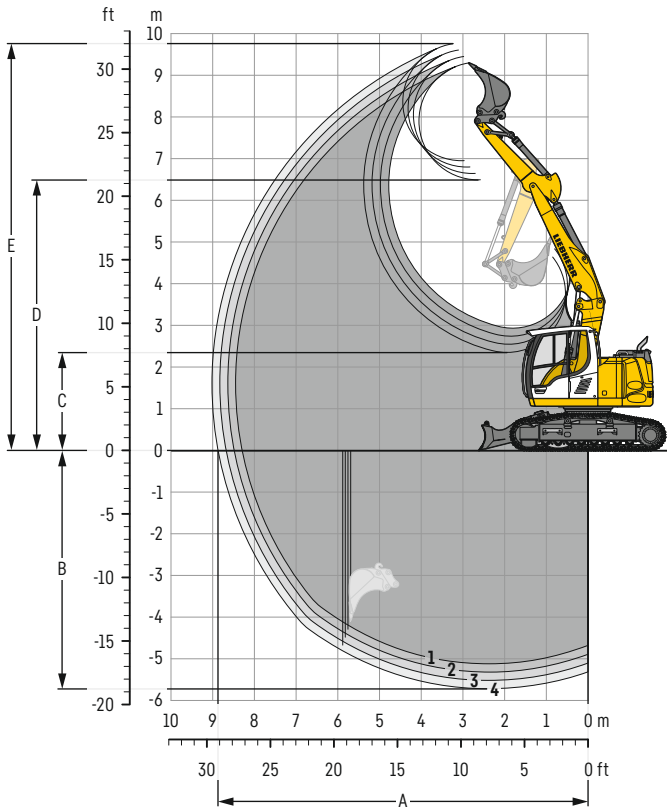
<sup>4)</sup> Bucket for mounting to quick coupler

Other buckets available upon request

Max. material weight ▲ = ≤ 2.0t/m<sup>3</sup>, ■ = ≤ 1.8t/m<sup>3</sup>, ▲ = ≤ 1.65t/m<sup>3</sup>, ■ = ≤ 1.5t/m<sup>3</sup>, ▲ = ≤ 1.2t/m<sup>3</sup>

# Backhoe bucket

with two-piece boom 4.85 m



## Digging envelope

with quick coupler	1	2	3	4	
Stick length	m	2.05	2.25	2.45	2.65
A Max. reach at ground level	m	8.30	8.50	8.70	8.90
B Max. digging depth	m	5.10	5.30	5.50	5.70
C Min. dumping height	m	2.95	2.75	2.55	2.35
D Max. dumping height	m	6.50	6.65	6.80	6.95
E Max. cutting height	m	9.30	9.45	9.60	9.75

## Forces

without quick coupler	1	2	3	4	
Stick digging force (ISO 6015)	kN	70	66	62	59
Bucket digging force (ISO 6015)	kN	89	89	89	89
Stick digging force (SAE J1179)	kN	68	64	60	57
Bucket digging force (SAE J1179)	kN	80	80	80	80

## Operating weight and ground pressure

The operating weight includes the basic machine with counterweight 2.8t, two-piece boom 4.85 m, stick 2.25 m, quick coupler SWA 33 and bucket 0.50 m<sup>3</sup> (340 kg).

Undercarriage	S				
Pad width	mm	500	600	700	900
Weight	kg	15,250	15,450	15,700	16,100
Ground pressure	kg/cm <sup>2</sup>	0.47	0.40	0.35	0.28

Undercarriage	S with blade			
Pad width	mm	500	600	700
Weight	kg	16,450	16,650	16,900
Ground pressure	kg/cm <sup>2</sup>	0.50	0.43	0.37

**Buckets** Machine stability per ISO 10567\* (75% of tipping capacity)

	Cutting width mm	Capacity ISO 7451 m <sup>3</sup>	Weight <sup>3)</sup> kg	Weight <sup>4)</sup> kg	S undercarriage (with track pads 600 mm)								S undercarriage with blade (with track pads 600 mm)							
					Stick length (m)				Stick length (m)				Stick length (m)				Stick length (m)			
					without quick coupler				with quick coupler				without quick coupler				with quick coupler			
	2.05	2.25	2.45	2.65	2.05	2.25	2.45	2.65	2.05	2.25	2.45	2.65	2.05	2.25	2.45	2.65				
STD <sup>1)</sup>	500	0.32	230	250	▲	▲	▲	▲	▲	▲	▲	▲	▲	▲	▲	▲	▲			
	550	0.29	250	260	▲	▲	▲	▲	▲	▲	▲	▲	▲	▲	▲	▲	▲			
	650	0.36	270	290	▲	▲	▲	▲	▲	▲	▲	▲	▲	▲	▲	▲	▲			
	850	0.50	320	340	▲	▲	▲	▲	▲	▲	▲	▲	▲	▲	▲	▲	▲			
	1,050	0.65	360	380	▲	▲	■	■	▲	■	■	▲	▲	▲	▲	▲	▲			
1,250	0.80	420	430	▲	■	■	△	▲	■	△	△	▲	▲	■	▲	▲				
HD <sup>2)</sup>	500	0.32	260	280	▲	▲	▲	▲	▲	▲	▲	▲	▲	▲	▲	▲	▲			
	550	0.29	280	290	▲	▲	▲	▲	▲	▲	▲	▲	▲	▲	▲	▲	▲			
	650	0.36	300	320	▲	▲	▲	▲	▲	▲	▲	▲	▲	▲	▲	▲	▲			
	850	0.50	360	380	▲	▲	▲	▲	▲	▲	▲	▲	▲	▲	▲	▲	▲			
	1,050	0.65	420	430	▲	▲	■	▲	▲	■	▲	▲	▲	▲	▲	▲	▲			
1,250	0.80	480	490	▲	■	△	△	■	△	△	△	▲	▲	■	■	▲	■			

\* Indicated loads are based on ISO 10567, at maximum reach, and may be swung 360° on firm and even ground

<sup>1)</sup> Standard bucket with teeth UNI-35-3

<sup>2)</sup> HD bucket with teeth UNI-35-3

<sup>3)</sup> Bucket for direct mounting

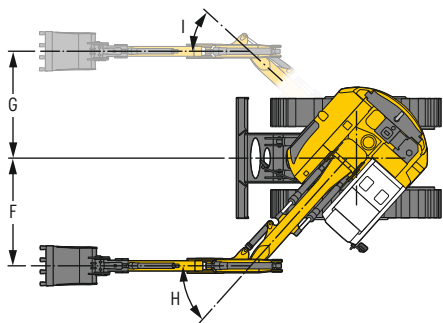
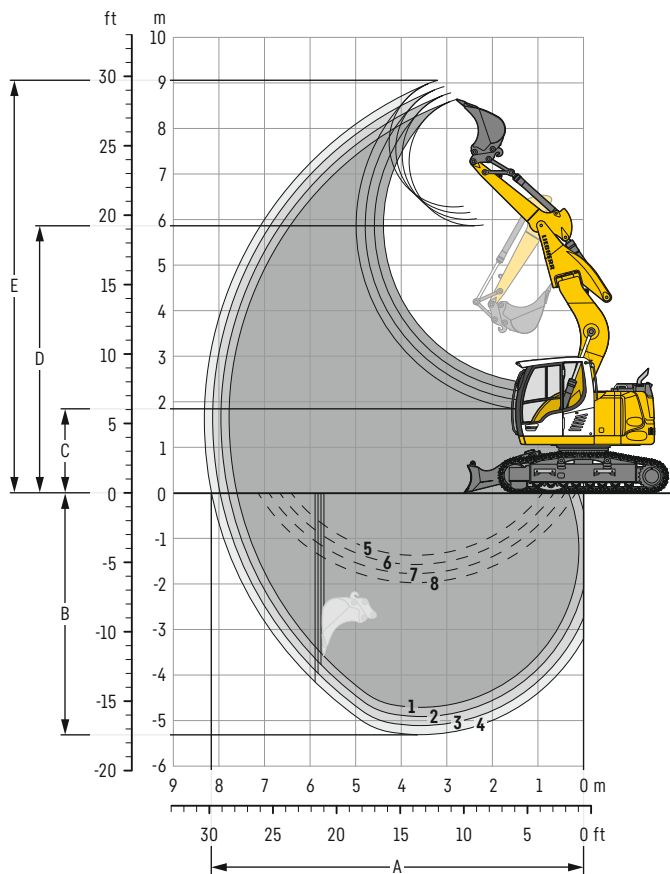
<sup>4)</sup> Bucket for mounting to quick coupler

Other buckets available upon request

Max. material weight ▲ = ≤ 2.0t/m<sup>3</sup>, ■ = ≤ 1.8t/m<sup>3</sup>, ▲ = ≤ 1.65t/m<sup>3</sup>, ■ = ≤ 1.5t/m<sup>3</sup>, △ = ≤ 1.2t/m<sup>3</sup>

# Backhoe bucket

with mono boom offset 4.30 m



## Digging envelope

with quick coupler		1	2	3	4
Stick length	m	2.05	2.25	2.45	2.65
A Max. reach at ground level	m	7.60	7.80	8.00	8.15
B Max. digging depth	m	4.70	4.90	5.10	5.30
C Min. dumping height	m	2.40	2.20	2.00	1.80
D Max. dumping height	m	5.90	6.00	6.15	6.30
E Max. cutting height	m	8.65	8.80	8.90	9.05
F Max. offset right	m	2.37			
G Max. offset left	m	2.35			
H Max. offset angle right	°	48			
I Max. offset angle left	°	42.5			

1 with stick 2.05 m  
 2 with stick 2.25 m  
 3 with stick 2.45 m  
 4 with stick 2.65 m  
 with set straight boom

5 with stick 2.05 m  
 6 with stick 2.25 m  
 7 with stick 2.45 m  
 8 with stick 2.65 m  
 at max. equipment offset with vertical ditch walls

## Forces

without quick coupler		1	2	3	4
Stick digging force (ISO 6015)	kN	70	66	62	59
Bucket digging force (ISO 6015)	kN	89	89	89	89
Stick digging force (SAE J1179)	kN	68	64	60	57
Bucket digging force (SAE J1179)	kN	80	80	80	80

## Operating weight and ground pressure

The operating weight includes the basic machine with counterweight 2.8 t, mono boom offset 4.30 m, stick 2.25 m, quick coupler SWA 33 and bucket 0.50 m<sup>3</sup> (340 kg).

Undercarriage		S			
Pad width	mm	500	600	700	900
Weight	kg	15,200	15,400	15,650	16,050
Ground pressure	kg/cm <sup>2</sup>	0.47	0.40	0.35	0.28

Undercarriage		S with blade		
Pad width	mm	500	600	700
Weight	kg	16,400	16,600	16,850
Ground pressure	kg/cm <sup>2</sup>	0.50	0.43	0.37

**Buckets** Machine stability per ISO 10567\* (75% of tipping capacity)

	Cutting width mm	Capacity ISO 7451 m <sup>3</sup>	Weight <sup>3)</sup> kg	Weight <sup>4)</sup> kg	S undercarriage (with track pads 600 mm)								S undercarriage with blade (with track pads 600 mm)							
					Stick length (m)				Stick length (m)				Stick length (m)				Stick length (m)			
					without quick coupler				with quick coupler				without quick coupler				with quick coupler			
	2.05	2.25	2.45	2.65	2.05	2.25	2.45	2.65	2.05	2.25	2.45	2.65	2.05	2.25	2.45	2.65				
STD <sup>1)</sup>	500	0.32	230	250	▲	▲	▲	▲	▲	▲	▲	▲	▲	▲	▲	▲	▲			
	550	0.29	250	260	▲	▲	▲	▲	▲	▲	▲	▲	▲	▲	▲	▲	▲			
	650	0.36	270	290	▲	▲	▲	▲	▲	▲	▲	▲	▲	▲	▲	▲	▲			
	850	0.50	320	340	▲	▲	▲	▲	▲	▲	▲	▲	▲	▲	▲	▲	▲			
	1,050	0.65	360	380	▲	▲	▲	▲	▲	▲	▲	▲	▲	▲	▲	▲	▲			
	1,250	0.80	420	430	▲	■	■	▲	■	■	▲	■	▲	▲	▲	▲	■			
HD <sup>2)</sup>	500	0.32	260	280	▲	▲	▲	▲	▲	▲	▲	▲	▲	▲	▲	▲	▲			
	550	0.29	280	290	▲	▲	▲	▲	▲	▲	▲	▲	▲	▲	▲	▲	▲			
	650	0.36	300	320	▲	▲	▲	▲	▲	▲	▲	▲	▲	▲	▲	▲	▲			
	850	0.50	360	380	▲	▲	▲	▲	▲	▲	▲	▲	▲	▲	▲	▲	▲			
	1,050	0.65	420	430	▲	▲	▲	▲	▲	▲	▲	▲	▲	▲	▲	▲	▲			
	1,250	0.80	480	490	■	■	▲	■	■	▲	▲	■	▲	▲	▲	▲	■			

\* Indicated loads are based on ISO 10567, at maximum reach, and may be swung 360° on firm and even ground

<sup>1)</sup> Standard bucket with teeth UNI-35-3

<sup>2)</sup> HD bucket with teeth UNI-35-3

<sup>3)</sup> Bucket for direct mounting

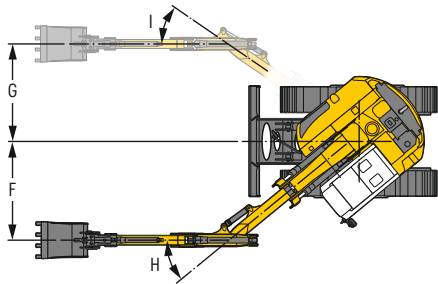
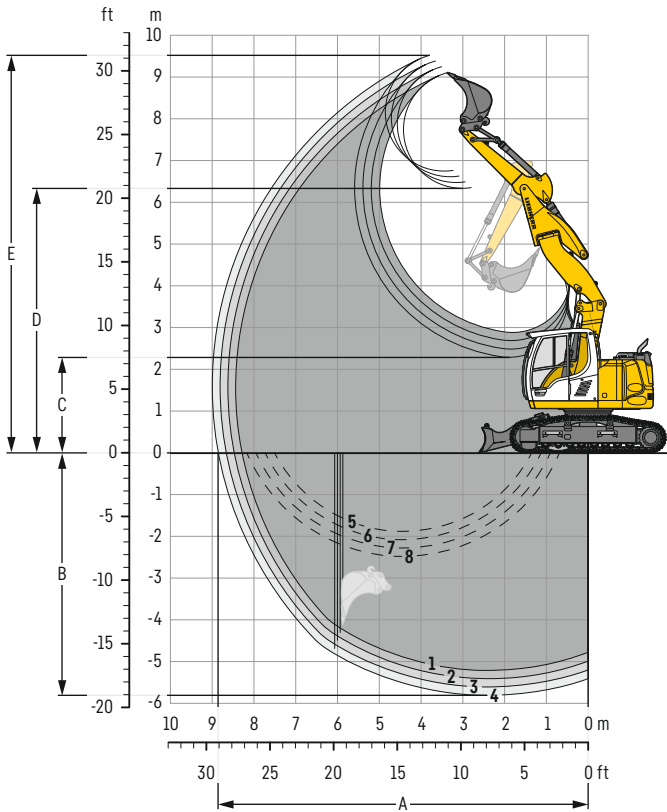
<sup>4)</sup> Bucket for mounting to quick coupler

Other buckets available upon request

Max. material weight ▲ = ≤ 2.0t/m<sup>3</sup>, ■ = ≤ 1.8t/m<sup>3</sup>, ▲ = ≤ 1.65t/m<sup>3</sup>, ■ = ≤ 1.5t/m<sup>3</sup>

# Backhoe bucket

with two-piece boom offset 4.90 m



## Digging envelope

with quick coupler		1	2	3	4
Stick length	m	2.05	2.25	2.45	2.65
A Max. reach at ground level	m	8.25	8.45	8.65	8.85
B Max. digging depth	m	5.20	5.40	5.60	5.80
C Min. dumping height	m	2.90	2.70	2.50	2.30
D Max. dumping height	m	6.35	6.50	6.60	6.75
E Max. cutting height	m	9.10	9.25	9.40	9.50
F Max. offset right	m	2.37			
G Max. offset left	m	2.34			
H Max. offset angle right	°	39.5			
I Max. offset angle left	°	34.5			

- |                        |  |
|------------------------|--|
| 1 with stick 2.05 m    | 5 with stick 2.05 m                                |
| 2 with stick 2.25 m    | 6 with stick 2.25 m                                |
| 3 with stick 2.45 m    | 7 with stick 2.45 m                                |
| 4 with stick 2.65 m    | 8 with stick 2.65 m                                |
| with set straight boom | at max. equipment offset with vertical ditch walls |

## Forces

without quick coupler		1	2	3	4
Stick digging force (ISO 6015)	kN	70	66	62	59
Bucket digging force (ISO 6015)	kN	89	89	89	89
Stick digging force (SAE J1179)	kN	68	64	60	57
Bucket digging force (SAE J1179)	kN	80	80	80	80

## Operating weight and ground pressure

The operating weight includes the basic machine with counterweight 2.8 t, two-piece boom offset 4.90 m, stick 2.25 m, quick coupler SWA 33 and bucket 0.50 m<sup>3</sup> (340 kg).

Undercarriage	S				
Pad width	mm	500	600	700	900
Weight	kg	15,800	16,000	16,250	16,650
Ground pressure	kg/cm <sup>2</sup>	0.49	0.41	0.36	0.29

Undercarriage	S with blade			
Pad width	mm	500	600	700
Weight	kg	17,000	17,200	17,450
Ground pressure	kg/cm <sup>2</sup>	0.52	0.44	0.38

**Buckets** Machine stability per ISO 10567\* (75% of tipping capacity)

	Cutting width mm	Capacity ISO 7451 m <sup>3</sup>	Weight <sup>3)</sup> kg	Weight <sup>4)</sup> kg	S undercarriage (with track pads 600 mm)								S undercarriage with blade (with track pads 600 mm)							
					Stick length (m)								Stick length (m)							
					without quick coupler				with quick coupler				without quick coupler				with quick coupler			
					2.05	2.25	2.45	2.65	2.05	2.25	2.45	2.65	2.05	2.25	2.45	2.65	2.05	2.25	2.45	2.65
STD <sup>1)</sup>	500	0.32	230	250	▲	▲	▲	▲	▲	▲	▲	▲	▲	▲	▲	▲	▲	▲	▲	▲
	550	0.29	250	260	▲	▲	▲	▲	▲	▲	▲	▲	▲	▲	▲	▲	▲	▲	▲	▲
	650	0.36	270	290	▲	▲	▲	▲	▲	▲	▲	▲	▲	▲	▲	▲	▲	▲	▲	▲
	850	0.50	320	340	▲	▲	▲	▲	▲	▲	▲	▲	▲	▲	▲	▲	▲	▲	▲	▲
	1,050	0.65	360	380	■	■	▲	■	■	▲	■	▲	■	▲	■	▲	■	▲	■	▲
1,250	0.80	420	430	■	△	△	△	△	△	△	△	—	■	▲	▲	■	▲	▲	■	△
HD <sup>2)</sup>	500	0.32	260	280	▲	▲	▲	▲	▲	▲	▲	▲	▲	▲	▲	▲	▲	▲	▲	▲
	550	0.29	280	290	▲	▲	▲	▲	▲	▲	▲	▲	▲	▲	▲	▲	▲	▲	▲	▲
	650	0.36	300	320	▲	▲	▲	▲	▲	▲	▲	▲	▲	▲	▲	▲	▲	▲	▲	▲
	850	0.50	360	380	▲	▲	▲	▲	▲	▲	▲	▲	■	▲	▲	▲	▲	▲	▲	▲
	1,050	0.65	420	430	■	▲	▲	■	▲	▲	■	▲	▲	■	▲	▲	■	▲	■	▲
1,250	0.80	480	490	△	△	△	△	△	△	—	—	▲	▲	■	■	▲	■	■	▲	△

\* Indicated loads are based on ISO 10567, at maximum reach, and may be swung 360° on firm and even ground

<sup>1)</sup> Standard bucket with teeth UNI-35-3

<sup>2)</sup> HD bucket with teeth UNI-35-3

<sup>3)</sup> Bucket for direct mounting

<sup>4)</sup> Bucket for mounting to quick coupler

Other buckets available upon request

Max. material weight ▲ = ≤ 2.0t/m<sup>3</sup>, ■ = ≤ 1.8t/m<sup>3</sup>, ▲ = ≤ 1.65t/m<sup>3</sup>, ■ = ≤ 1.5t/m<sup>3</sup>, △ = ≤ 1.2t/m<sup>3</sup>, — = not authorised

# Lift capacities

with mono boom 4.60 m, counterweight 2.8 t and track pads 600 mm

## Stick 2.05 m

Under-carriage m	3.0m		4.5m		6.0m		7.5m		m		
7.5									2.7*	2.7*	4.9
6.0									2.3	2.6*	6.0
4.5	5.2*	5.2*	3.7	4.4*					2.0	2.6*	6.5
3.0	6.4	8.0*	3.5	5.3*	2.3	3.5			1.8	2.8*	6.7
1.5			3.2	5.2	2.2	3.4			1.9	3.0	6.5
0	5.5	6.1*	3.1	5.1	2.1	3.3			2.1	3.4	5.9
-1.5	5.6	9.2*	3.0	5.0					2.9	4.5*	4.7
-3.0	5.7	7.2*	3.1	4.9*							
7.5									2.7*	2.7*	4.9
6.0			4.0	4.1*					2.5	2.6*	6.0
4.5	5.2*	5.2*	4.0	4.4*					2.2	2.6*	6.5
3.0	6.9	8.0*	3.8	5.3*	2.5	3.6			2.0	2.8*	6.7
1.5			3.5	5.3	2.4	3.5			2.1	3.0	6.5
0	6.0	6.1*	3.4	5.1	2.3	3.4			2.3	3.4	5.9
-1.5	6.0	9.2*	3.3	5.1					3.2	4.5*	4.7
-3.0	6.2	7.2*	3.4	4.9*							
7.5									2.7*	2.7*	4.9
6.0			4.1*	4.1*					2.6*	2.6*	6.0
4.5	5.2*	5.2*	4.2	4.4*					2.3	2.6*	6.5
3.0	7.3	8.0*	4.0	5.3*	2.6	4.4*			2.1	2.8*	6.7
1.5			3.7	6.2*	2.5	4.7*			2.2	3.3*	6.5
0	6.1*	6.1*	3.6	6.6*	2.4	4.9*			2.5	4.4*	5.9
-1.5	6.5	9.2*	3.5	6.3*					3.4	4.5*	4.7
-3.0	6.6	7.2*	3.6	4.9*							

## Stick 2.25 m

Under-carriage m	3.0m		4.5m		6.0m		7.5m		m		
7.5									3.1*	3.1*	3.2
6.0									2.4*	2.4*	5.2
4.5	4.8*	4.8*	3.7	4.2*	2.3	3.2*			2.2	2.3*	6.2
3.0	6.5	7.6*	3.5	5.1*	2.3	3.5			1.9	2.3*	6.7
1.5	5.3*	5.3*	3.2	5.2	2.2	3.4			1.8	2.5*	6.9
0	5.5	6.3*	3.1	5.0	2.1	3.3			1.8	2.8	6.7
-1.5	5.5	9.4*	3.0	5.0	2.1	3.3			2.0	3.2	6.1
-3.0	5.6	7.6*	3.1	5.1					2.7	4.3	5.0
7.5									3.1*	3.1*	3.2
6.0			4.0*	4.0*					2.4*	2.4*	5.2
4.5	4.8*	4.8*	4.0	4.2*	2.5	3.2*			2.3*	2.3*	6.2
3.0	6.9	7.6*	3.8	5.1*	2.5	3.6			2.1	2.3*	6.7
1.5	5.3*	5.3*	3.5	5.3	2.4	3.4			1.9	2.5*	6.9
0	6.0	6.3*	3.3	5.1	2.3	3.4			2.0	2.9	6.7
-1.5	6.0	9.4*	3.3	5.1	2.2	3.3			2.2	3.3	6.1
-3.0	6.1	7.6*	3.4	5.1					2.9	4.4	5.0
7.5									3.1*	3.1*	3.2
6.0			4.0*	4.0*					2.4*	2.4*	5.2
4.5	4.8*	4.8*	4.2	4.2*	2.7	3.2*			2.3*	2.3*	6.2
3.0	7.4	7.6*	4.0	5.1*	2.6	4.2*			2.2	2.3*	6.7
1.5	5.3*	5.3*	3.7	6.1*	2.5	4.6*			2.0	2.5*	6.9
0	6.3*	6.3*	3.5	6.6*	2.4	4.8*			2.1	2.9*	6.7
-1.5	6.4	9.4*	3.5	6.4*	2.4	4.5*			2.3	3.8*	6.1
-3.0	6.6	7.6*	3.6	5.2*					3.1	4.4*	5.0

## Stick 2.45 m

Under-carriage m	3.0m		4.5m		6.0m		7.5m		m		
7.5									2.7*	2.7*	3.6
6.0									2.2*	2.2*	5.4
4.5			3.7*	3.7*					2.1*	2.1*	6.4
3.0	6.6	7.1*	3.5	4.9*	2.3	3.5			1.8	2.1*	6.9
1.5	5.7	6.5*	3.2	5.2	2.1	3.4			1.7	2.3*	7.1
0	5.5	6.5*	3.0	5.0	2.1	3.3			1.7	2.6*	6.9
-1.5	5.4	9.6*	3.0	5.0	2.0	3.3			1.9	3.0	6.3
-3.0	5.6	7.9*	3.0	5.0					2.5	4.0	5.3
7.5									2.7*	2.7*	3.6
6.0			3.7*	3.7*					2.2*	2.2*	5.4
4.5			4.0	4.0*	2.5	3.4*			2.1*	2.1*	6.4
3.0	7.0	7.1*	3.8	4.9*	2.5	3.6			2.0	2.1*	6.9
1.5	6.2	6.5*	3.5	5.3	2.3	3.4			1.8	2.3*	7.1
0	6.0	6.5*	3.3	5.1	2.2	3.3			1.9	2.6*	6.9
-1.5	5.9	9.6*	3.3	5.0	2.2	3.3			2.1	3.1	6.3
-3.0	6.1	7.9*	3.3	5.1					2.7	4.1	5.3
7.5									2.7*	2.7*	3.6
6.0			3.7*	3.7*					2.2*	2.2*	5.4
4.5			4.0*	4.0*	2.7	3.4*			2.1*	2.1*	6.4
3.0	7.1*	7.1*	4.0	4.9*	2.6	4.1*			2.1	2.1*	6.9
1.5	6.5*	6.5*	3.7	6.0*	2.5	4.5*			1.9	2.3*	7.1
0	6.4	6.5*	3.5	6.5*	2.4	4.8*			2.0	2.6*	6.9
-1.5	6.4	9.6*	3.5	6.4*	2.3	4.6*			2.2	3.3*	6.3
-3.0	6.5	7.9*	3.5	5.4*					2.9	4.3*	5.3

## Stick 2.65 m

Under-carriage m	3.0m		4.5m		6.0m		7.5m		m		
7.5									2.4*	2.4*	3.9
6.0									2.0*	2.0*	5.7
4.5			3.5*	3.5*					1.9*	1.9*	6.6
3.0	6.6*	6.6*	3.5	4.7*	2.4	3.4*			1.7	1.9*	7.1
1.5	5.8	7.8*	3.2	5.3	2.1	3.4			1.6	2.1*	7.2
0	5.4	6.6*	3.0	5.0	2.0	3.3			1.6	2.4*	7.1
-1.5	5.4	9.2*	3.0	4.9	2.0	3.2			1.8	2.9	6.5
-3.0	5.5	8.2*	3.0	5.0					2.3	3.7	5.5
7.5									2.4*	2.4*	3.9
6.0			3.5*	3.5*					2.0*	2.0*	5.7
4.5			3.8*	3.8*	2.5	3.4*			1.9*	1.9*	6.6
3.0	6.6*	6.6*	3.8	4.7*	2.5	3.6			1.9	1.9*	7.1
1.5	6.3	7.8*	3.5	5.3	2.3	3.4			1.8	2.1*	7.2
0	5.9	6.6*	3.3	5.1	2.2	3.3			1.8	2.4*	7.1
-1.5	5.9	9.2*	3.2	5.0	2.2	3.3			2.0	2.9	6.5
-3.0	6.0	8.2*	3.3	5.0					2.5	3.8	5.5
7.5									2.4*	2.4*	3.9
6.0			3.5*	3.5*					2.0*	2.0*	5.7
4.5			3.8*	3.8*	2.7	3.4*			1.9*	1.9*	6.6
3.0	6.6*	6.6*	4.0	4.7*	2.6	4.0*			1.9*	1.9*	7.1
1.5	6.7	7.8*	3.7	5.8*	2.5	4.4*			1.9	2.1*	7.2
0	6.4	6.6*	3.5	6.5*	2.4	4.7*			1.9	2.4*	7.1
-1.5	6.3	9.2*	3.4	6.4*	2.3	4.6*			2.1	3.0*	6.5
-3.0	6.4	8.2*	3.5	5.6*					2.6	4.2*	5.5

Height Can be slewed through 360° In longitudinal position of undercarriage Max. reach \* Limited by hydr. capacity

The load values are quoted in tons (t) at stick end (without bucket), and may be swung 360° on firm and even ground. Adjacent values are valid for the undercarriage when in the longitudinal position. Capacities are valid for 600 mm wide track pads. Indicated loads are based on ISO 10567 standard and do not exceed 75% of tipping or 87% of hydraulic capacity (indicated via \*). Without bucket cylinder, link and lever the lift capacities will increase by 186 kg. Lifting capacity of the excavator is limited by machine stability and hydraulic capacity.

According to European Standard, EN 474-5: In the European Union excavators have to be equipped with an overload warning device, a load diagram and automatic safety check valves on hoist cylinders and stick cylinder(s), when they are used for lifting operations which require the use of lifting accessories.

Determine maximum load lift from load lift chart displayed in the operator's cab or from load lift chart detailed in the operator's manual supplied with the machine.

# Lift capacities

with two-piece boom 4.85 m, counterweight 2.8 t and track pads 600 mm

## Stick 2.05 m

Under-carriage	m	3.0m		4.5m		6.0m		7.5m		m		
S	7.5									3.5*	3.5*	3.5
	6.0									2.8*	2.8*	5.4
	4.5	6.7*	6.7*	3.9	4.9*	2.4	3.6			2.1	2.6*	6.4
	3.0	6.8	9.2*	3.8	5.6	2.4	3.6			1.8	2.6*	6.9
	1.5	6.7	9.6*	3.8	5.6	2.3	3.5			1.7	2.7	7.0
	0	6.5	10.5*	3.5	5.6	2.2	3.4			1.7	2.7	6.8
Blade up	-1.5	6.2	10.7*	3.3	5.3	2.1	3.3			1.9	3.1	6.3
	-3.0	6.0	9.3*	3.1	4.7*					2.7	3.4*	5.0
	7.5									3.5*	3.5*	3.5
	6.0			4.1	4.9*					2.8*	2.8*	5.4
	4.5	6.7*	6.7*	4.1	5.3*	2.5	3.7			2.3	2.6*	6.4
	3.0	7.2	9.2*	4.1	5.7	2.5	3.7			2.0	2.6*	6.9
Blade down	1.5	7.1	9.6*	4.1	5.6	2.5	3.6			1.8	2.7	7.0
	0	7.0	10.5*	3.8	5.7	2.4	3.5			1.9	2.8	6.8
	-1.5	6.7	10.7*	3.6	5.4	2.3	3.4			2.1	3.1	6.3
	-3.0	6.5	9.3*	3.4	4.7*					2.9	3.4*	5.0
	7.5			4.3	4.9*					2.4	2.6*	6.4
	6.0	6.7*	6.7*	4.3	5.3*	2.7	4.3*			2.1	2.6*	6.9
Blade up	4.5	7.6	9.2*	4.2	6.0*	2.7	4.7*			2.0	2.7*	7.0
	3.0	7.6	9.2*	4.2	6.0*	2.6	4.8*			2.0	3.1*	6.8
	1.5	7.5	9.6*	4.2	6.6*	2.6	4.8*			2.2	3.5*	6.3
	0	7.5	10.5*	4.0	6.6*	2.5	4.9*			2.2	3.5*	6.3
	-1.5	7.1	10.7*	3.8	6.8*	2.4	4.2*			3.1	3.4*	5.0
	-3.0	6.9	9.3*	3.6	4.7*					3.1	3.4*	5.0

## Stick 2.25 m

Under-carriage	m	3.0m		4.5m		6.0m		7.5m		m		
S	7.5									3.1*	3.1*	3.9
	6.0									2.5*	2.5*	5.6
	4.5	5.6*	5.6*	3.9	4.6*	2.4	3.6			2.0	2.3*	6.6
	3.0	6.8	9.1*	3.8	5.6	2.4	3.6			1.7	2.3*	7.1
	1.5	6.7	9.5*	3.8	5.5	2.3	3.6			1.6	2.4*	7.2
	0	6.5	10.4*	3.6	5.6	2.2	3.4			1.6	2.6	7.0
Blade up	-1.5	6.2	10.6*	3.3	5.3	2.1	3.3			1.8	2.9	6.5
	-3.0	6.0	9.9*	3.1	5.2					2.5	3.2*	5.3
	7.5									3.1*	3.1*	3.9
	6.0			4.2	4.6*					2.5*	2.5*	5.6
	4.5	5.6*	5.6*	4.1	5.1*	2.6	3.7			2.2	2.3*	6.6
	3.0	7.2	9.1*	4.0	5.6	2.6	3.7			1.9	2.3*	7.1
Blade down	1.5	7.1	9.5*	4.0	5.6	2.5	3.6			1.8	2.4*	7.2
	0	7.0	10.4*	3.8	5.7	2.4	3.5			1.8	2.7	7.0
	-1.5	6.7	10.6*	3.6	5.4	2.3	3.4			2.0	3.0	6.5
	-3.0	6.5	9.9*	3.4	5.2					2.7	3.2*	5.3
	7.5									3.1*	3.1*	3.9
	6.0			4.3	4.6*					2.5*	2.5*	5.6
Blade up	4.5	5.6*	5.6*	4.3	5.1*	2.7	4.3*			2.3	2.3*	6.6
	3.0	7.6	9.1*	4.2	5.9*	2.7	4.6*			2.0	2.3*	7.1
	1.5	7.5	9.5*	4.2	6.5*	2.6	4.8*			1.9	2.4*	7.2
	0	7.5	10.4*	4.0	6.6*	2.5	4.8*			1.9	2.7*	7.0
	-1.5	7.1	10.6*	3.8	6.8*	2.4	4.4*			2.1	3.3*	6.5
	-3.0	6.9	9.9*	3.6	5.3*					2.8	3.2*	5.3

## Stick 2.45 m

Under-carriage	m	3.0m		4.5m		6.0m		7.5m		m		
S	7.5									2.7*	2.7*	4.3
	6.0									2.2*	2.2*	5.9
	4.5	4.8*	4.8*	3.9	5.0*	2.4	3.7			1.9	2.1*	6.8
	3.0	6.8	8.7*	3.8	5.6	2.4	3.6			1.6	2.1*	7.3
	1.5	6.7	9.4*	3.8	5.5	2.3	3.6			1.5	2.2*	7.4
	0	6.6	10.3*	3.6	5.6	2.2	3.4			1.6	2.5*	7.2
Blade up	-1.5	6.2	10.5*	3.3	5.4	2.1	3.3			1.7	2.8	6.7
	-3.0	6.0	10.3*	3.1	5.2					2.2	2.8*	5.7
	7.5									2.7*	2.7*	4.3
	6.0			4.2	4.2*					2.2*	2.2*	5.9
	4.5	4.8*	4.8*	4.1	5.0*	2.6	3.7			2.0	2.1*	6.8
	3.0	7.2	8.7*	4.0	5.6	2.6	3.7			1.8	2.1*	7.3
Blade down	1.5	7.1	9.4*	4.0	5.6	2.5	3.6			1.7	2.2*	7.4
	0	7.1	10.3*	3.8	5.6	2.4	3.5			1.7	2.5*	7.2
	-1.5	6.7	10.5*	3.6	5.4	2.3	3.4			1.9	2.8	6.7
	-3.0	6.5	10.3*	3.4	5.2					2.4	2.8*	5.7
	7.5									2.7*	2.7*	4.3
	6.0			4.2*	4.2*					2.2*	2.2*	5.9
Blade up	4.5	4.8*	4.8*	4.3	5.0*	2.7	4.2*			2.1*	2.1*	6.8
	3.0	7.6	8.7*	4.2	5.7*	2.7	4.5*			1.9	2.1*	7.3
	1.5	7.4	9.4*	4.2	6.4*	2.6	4.7*			1.8	2.2*	7.4
	0	7.5	10.3*	4.1	6.5*	2.5	4.8*			1.8	2.5*	7.2
	-1.5	7.1	10.5*	3.8	6.7*	2.4	4.6*			2.0	3.0*	6.7
	-3.0	6.9	10.3*	3.6	5.8*					2.5	2.8*	5.7

## Stick 2.65 m

Under-carriage	m	3.0m		4.5m		6.0m		7.5m		m		
S	7.5									2.4*	2.4*	4.6
	6.0									2.0*	2.0*	6.1
	4.5			3.9	3.9*	2.4	2.5*			1.8	1.9*	7.0
	3.0	6.8	8.4*	3.8	5.6	2.4	3.7			1.6	1.9*	7.5
	1.5	6.6	9.4*	3.7	5.5	2.3	3.6			1.5	2.0*	7.6
	0	6.6	10.1*	3.6	5.5	2.2	3.5			1.5	2.2*	7.4
Blade up	-1.5	6.2	10.5*	3.4	5.4	2.1	3.3			1.6	2.6	6.9
	-3.0	6.0	10.6*	3.1	5.1					2.0	2.8*	6.0
	7.5									2.7*	2.7*	4.6
	6.0			3.9*	3.9*	2.5*	2.5*			2.0*	2.0*	6.1
	4.5			4.1	4.5*	2.6	3.7			1.9*	1.9*	7.0
	3.0	7.2	8.4*	4.0	5.6*	2.6	3.7			1.7	1.9*	7.5
Blade down	1.5	7.0	9.4*	4.0	5.5	2.5	3.6			1.6	2.0*	7.6
	0	7.1	10.1*	3.9	5.6	2.4	3.5			1.7	2.4	7.4
	-1.5	6.7	10.5*	3.6	5.5	2.3	3.4			1.8	2.6*	6.9
	-3.0	6.5	10.6*	3.4	5.2					2.2	2.8*	6.0
	7.5									2.7*	2.7*	4.6
	6.0			3.9*	3.9*	2.5*	2.5*			2.0*	2.0*	6.1
Blade up	4.5			4.3	4.5*	2.8	4.0*			1.9*	1.9*	7.0
	3.0	7.6	8.4*	4.2	5.6*	2.7	4.4*			1.8	1.9*	7.5
	1.5	7.4	9.4*	4.2	6.3*	2.7	4.7*			1.7	2.0*	7.6
	0	7.5	10.1*	4.1	6.5*	2.5	4.7*			1.7	2.2*	7.4
	-1.5	7.1	10.5*	3.8	6.6*	2.4	4.7*			1.9	2.6*	6.9
	-3.0	6.9	10.6*	3.6	6.1*					2.3	2.8*	6.0

Height Can be slewed through 360° In longitudinal position of undercarriage Max. reach \* Limited by hydr. capacity

The load values are quoted in tons (t) at stick end (without bucket), and may be swung 360° on firm and even ground. Adjacent values are valid for the undercarriage when in the longitudinal position. Capacities are valid for 600 mm wide track pads with adjusting cylinder in optimal position. Indicated loads are based on ISO 10567 standard and do not exceed 75% of tipping or 87% of hydraulic capacity (indicated via \*). Without bucket cylinder, link and lever the lift capacities will increase by 186 kg. Lifting capacity of the excavator is limited by machine stability and hydraulic capacity. According to European Standard, EN 474-5: In the European Union excavators have to be equipped with an overload warning device, a load diagram and automatic safety check valves on hoist cylinders and stick cylinder(s), when they are used for lifting operations which require the use of lifting accessories. Determine maximum load lift from load lift chart displayed in the operator's cab or from load lift chart detailed in the operator's manual supplied with the machine.

# Lift capacities

with mono boom offset 4.30 m, counterweight 2.8 t and track pads 600 mm

## Stick 2.05 m

Under-carriage	m	3.0m		4.5m		6.0m		7.5m		m
S	7.5									
	6.0	5.0*	5.0*					2.7*	2.7*	4.5
	4.5	5.7*	5.7*					2.5*	2.5*	5.6
	3.0	6.5	8.1*	3.5	5.5	2.2	3.5	2.1	2.6*	6.2
	1.5	5.6	7.8*	3.2	5.2	2.1	3.4	1.9	2.8*	6.4
	0	5.4	8.5*	3.0	5.0	2.0	3.3	2.0	3.2	6.2
Blade up	-1.5	5.4	8.6*	3.0	5.0			2.3	3.7	5.5
	-3.0	5.6	5.9*					3.3	4.1*	4.3
	7.5	5.0*	5.0*					2.7*	2.7*	
	6.0	5.7*	5.7*	4.0	4.8*			2.5*	2.5*	4.5
	4.5	7.0	8.1*	3.7	5.6*	2.4	3.5	2.3	2.6*	5.6
	3.0	6.1	7.8*	3.5	5.3	2.3	3.4	2.1	2.8*	6.2
Blade down	1.5	5.9	8.5*	3.5	5.1	2.2	3.3	2.2	3.2	6.4
	0	5.9	8.6*	3.2	5.0			2.5	3.7	6.2
	-1.5	5.9*	5.9*					3.6	4.1*	5.5
	-3.0									4.3
	7.5	5.0*	5.0*					2.7*	2.7*	
	6.0	5.7*	5.7*	4.2	4.8*			2.5*	2.5*	4.5
S	4.5	7.4	8.1*	4.0	5.6*	2.5	3.8*	2.4	2.6*	5.6
	3.0	6.5	7.8*	3.7	6.3*	2.4	4.8*	2.2	2.8*	6.2
	1.5	6.3	8.5*	3.5	6.6*	2.4	4.7*	2.3	3.4*	6.4
	0	6.3	8.6*	3.4	5.9*			2.6	4.5*	6.2
	-1.5	5.9*	5.9*					3.8	4.1*	5.5
	-3.0									4.3

## Stick 2.25 m

Under-carriage	m	3.0m		4.5m		6.0m		7.5m		m
S	7.5									
	6.0			3.2*	3.2*					2.4*
	4.5	5.3*	5.3*	3.7	4.6*					2.3*
	3.0	6.6	7.7*	3.5	5.4*	2.2	3.5	2.0	2.3*	5.8
	1.5	5.7	9.4*	3.2	5.2	2.1	3.4	1.9	2.5*	6.6
	0	5.4	8.7*	3.0	5.0	2.0	3.3	1.9	3.0*	6.3
Blade up	-1.5	5.3	8.9*	2.9	4.9			2.1	3.5	5.7
	-3.0	5.5	6.4*	3.0	4.2*			3.0	4.1*	4.5
	7.5			3.2*	3.2*					2.4*
	6.0			4.0	4.6*					2.3*
	4.5	5.3*	5.3*	3.8	5.4*	2.4	3.5	2.2	2.3*	5.8
	3.0	7.1	7.7*	3.5	5.3	2.3	3.4	2.0	2.5*	6.6
Blade down	1.5	6.2	9.4*	3.5	5.3	2.4	4.7*	2.1	3.0*	6.3
	0	5.8	8.7*	3.3	5.1	2.2	3.3	2.3	3.5	5.7
	-1.5	5.8	8.9*	3.2	5.0			3.3	4.1*	4.5
	-3.0	6.0	6.4*	3.3	4.2*					
	7.5			3.2*	3.2*					2.4*
	6.0			4.2	4.6*					2.3*
S	4.5	5.3*	5.3*	4.0	5.4*	2.6	4.1*	2.3	2.3*	5.8
	3.0	7.5	7.7*	4.0	5.4*	2.6	4.1*	2.3	2.3*	6.4
	1.5	6.6	9.4*	3.7	6.2*	2.4	4.7*	2.1	2.5*	6.6
	0	6.3	8.7*	3.5	6.5*	2.4	4.7*	2.2	3.0*	6.3
	-1.5	6.3	8.9*	3.4	6.1*			2.5	4.0*	5.7
	-3.0	6.4*	6.4*	3.5	4.2*			3.5	4.1*	4.5

## Stick 2.45 m

Under-carriage	m	3.0m		4.5m		6.0m		7.5m		m
S	7.5									
	6.0							2.9*	2.9*	2.8
	4.5	4.7*	4.7*	3.3*	3.3*	2.2*	2.2*	2.2*	2.2*	5.0
	3.0	6.7	7.2*	3.5	5.2*	2.2	3.5	1.9	2.1*	6.0
	1.5	5.7	9.7*	3.2	5.2	2.1	3.4	1.8	2.3*	6.7
	0	5.3	8.8*	3.0	5.0	2.0	3.3	1.8	2.7*	6.5
Blade up	-1.5	5.3	9.1*	2.9	4.9			2.0	3.3	5.9
	-3.0	5.4	6.8*	3.0	4.6*			2.7	4.1*	4.8
	7.5			3.3*	3.3*			2.9*	2.9*	2.8
	6.0			4.0	4.4*	2.2*	2.2*	2.2*	2.2*	5.0
	4.5	4.7*	4.7*	3.8	4.4*	2.2*	2.2*	2.1*	2.1*	6.0
	3.0	7.2	7.2*	3.8	5.2*	2.4	3.5	2.1	2.1*	6.6
Blade down	1.5	6.2	9.7*	3.5	5.3	2.3	3.4	1.9	2.3*	6.7
	0	5.8	8.8*	3.3	5.1	2.2	3.3	2.0	2.7*	6.5
	-1.5	5.8	9.1*	3.2	5.0			2.2	3.3	5.9
	-3.0	5.9	6.8*	3.3	4.6*			3.0	4.1*	4.8
	7.5			3.3*	3.3*			2.9*	2.9*	2.8
	6.0			4.3	4.4*	2.2*	2.2*	2.2*	2.2*	5.0
S	4.5	4.7*	4.7*	4.0	5.2*	2.6	4.2*	2.1*	2.1*	6.0
	3.0	7.2*	7.2*	4.0	5.2*	2.6	4.2*	2.0	2.3*	6.7
	1.5	6.7	9.7*	3.7	6.1*	2.4	4.6*	2.1	2.7*	6.5
	0	6.2	8.8*	3.5	6.5*	2.3	4.7*	2.3	3.5*	5.9
	-1.5	6.2	9.1*	3.4	6.1*			3.2	4.1*	4.8
	-3.0	6.4	6.8*	3.5	4.6*					

## Stick 2.65 m

Under-carriage	m	3.0m		4.5m		6.0m		7.5m		m
S	7.5									
	6.0									2.5*
	4.5			3.3*	3.3*					2.0*
	3.0	6.8	6.8*	3.5	5.0*	2.3	3.5	1.8	1.9*	6.8
	1.5	5.8	9.4*	3.2	5.3	2.1	3.4	1.7	2.1*	6.9
	0	5.3	9.0*	3.0	5.0	2.0	3.2	1.7	2.4*	6.7
Blade up	-1.5	5.2	9.3*	2.9	4.9	2.0	3.2	1.9	3.1	6.1
	-3.0	5.4	7.2*	2.9	4.9*			2.5	4.1*	5.1
	7.5			3.3*	3.3*					2.5*
	6.0			4.1	4.2*	2.5	2.6*			2.0*
	4.5			3.8	5.0*	2.4	3.6	1.9*	1.9*	6.2
	3.0	6.8*	6.8*	3.5	5.3	2.3	3.4	1.9	2.1*	6.9
Blade down	1.5	6.3	9.4*	3.5	5.3	2.3	3.4	1.9	2.1*	6.9
	0	5.8	9.0*	3.3	5.1	2.2	3.3	1.9	2.4*	6.7
	-1.5	5.7	9.3*	3.2	4.9	2.2	3.2	2.1	3.1*	6.1
	-3.0	5.9	7.2*	3.2	4.9*			2.8	4.1*	5.1
	7.5			3.3*	3.3*					2.5*
	6.0			4.2*	4.2*	2.6*	2.6*			2.0*
S	4.5			4.0	5.0*	2.6	4.1*	1.9*	1.9*	6.2
	3.0	6.8*	6.8*	4.0	5.0*	2.6	4.1*	1.9*	1.9*	6.8
	1.5	6.7	9.4*	3.7	5.9*	2.4	4.6*	2.0	2.1*	6.9
	0	6.2	9.0*	3.5	6.5*	2.3	4.7*	2.0	2.4*	6.7
	-1.5	6.2	9.3*	3.4	6.2*	2.3	4.3*	2.2	3.1*	6.1
	-3.0	6.3	7.2*	3.4	4.9*			2.9	4.1*	5.1

Height Can be slewed through 360° In longitudinal position of undercarriage Max. reach \* Limited by hydr. capacity

The load values are quoted in tons (t) at stick end (without bucket), and may be swung 360° on firm and even ground. Adjacent values are valid for the undercarriage when in the longitudinal position. Capacities are valid for 600 mm wide track pads. Indicated loads are based on ISO 10567 standard and do not exceed 75% of tipping or 87% of hydraulic capacity (indicated via \*). Without bucket cylinder, link and lever the lift capacities will increase by 186 kg. Lifting capacity of the excavator is limited by machine stability and hydraulic capacity.

According to European Standard, EN 474-5: In the European Union excavators have to be equipped with an overload warning device, a load diagram and automatic safety check valves on hoist cylinders and stick cylinder(s), when they are used for lifting operations which require the use of lifting accessories.

Determine maximum load lift from load lift chart displayed in the operator's cab or from load lift chart detailed in the operator's manual supplied with the machine.

# Lift capacities

with two-piece boom offset 4.90 m, counterweight 2.8 t and track pads 600 mm

## Stick 2.05 m

Under-carriage	m	3.0m		4.5m		6.0m		7.5m		m		
S	7.5									3.3*	3.3*	3.5
	6.0									2.7*	2.7*	5.4
	4.5	6.6*	6.6*	3.8	4.7*	2.2	3.5			2.0	2.5*	6.4
	3.0	6.6	8.8*	3.7	5.4	2.2	3.5			1.6	2.5*	6.9
	1.5	6.5	9.1*	3.7	5.4	2.1	3.4			1.5	2.5	7.0
	0	6.4	9.9*	3.5	5.5	2.0	3.3			1.5	2.6	6.8
Blade up	-1.5	6.0	10.2*	3.1	5.1	1.9	3.1			1.7	2.9	6.3
	-3.0	5.6	9.2*	2.9	4.7*					2.3	3.0*	5.1
	7.5			4.1	4.7*					3.3*	3.3*	3.5
	6.0			4.1	5.0*	2.4	3.6			2.7*	2.7*	5.4
	4.5	6.6*	6.6*	4.0	5.5	2.4	3.6			2.1	2.5*	6.4
	3.0	7.0	8.8*	4.0	5.5	2.4	3.6			1.8	2.5*	6.9
Blade down	1.5	6.9	9.1*	4.0	5.4	2.3	3.5			1.7	2.6	7.0
	0	6.9	9.9*	3.7	5.6	2.2	3.3			1.7	2.6	6.8
	-1.5	6.5	10.2*	3.3	5.2	2.0	3.2			1.9	2.9	6.3
	-3.0	6.1	9.2*	3.2	4.7*					2.6	3.0*	5.1
	7.5			4.3	4.7*					3.3*	3.3*	3.5
	6.0			4.2	5.0*	2.6	4.2*			2.3	2.5*	6.4
Blade up	4.5	6.6*	6.6*	4.1	5.6*	2.6	4.4*			1.9	2.5*	6.9
	3.0	7.4	8.8*	4.1	5.6*	2.6	4.4*			1.9	2.5*	6.9
	1.5	7.3	9.1*	4.1	6.2*	2.5	4.5*			1.8	2.7*	7.0
	0	7.4	9.9*	4.0	6.3*	2.3	4.6*			1.8	3.1*	6.8
	-1.5	6.9	10.2*	3.6	6.5*	2.2	4.0*			2.0	3.4*	6.3
	-3.0	6.6	9.2*	3.4	4.7*					2.7	3.0*	5.1

## Stick 2.25 m

Under-carriage	m	3.0m		4.5m		6.0m		7.5m		m		
S	7.5									2.9*	2.9*	3.9
	6.0									2.4*	2.4*	5.6
	4.5	6.0*	6.0*	3.8	4.8*	2.3	3.6			1.9	2.3*	6.6
	3.0	6.7	8.6*	3.7	5.4	2.3	3.6			1.6	2.3*	7.1
	1.5	6.5	9.0*	3.7	5.3	2.2	3.5			1.4	2.4	7.2
	0	6.5	9.8*	3.5	5.4	2.0	3.3			1.5	2.5	7.0
Blade up	-1.5	6.0	10.1*	3.1	5.2	1.9	3.1			1.6	2.7	6.5
	-3.0	5.6	9.7*	2.9	4.9					2.1	2.9*	5.5
	7.5			4.1	4.5*					2.9*	2.9*	3.9
	6.0			4.1	4.8*	2.5	3.6			2.4*	2.4*	5.6
	4.5	6.0*	6.0*	4.0	5.5	2.5	3.6			2.0	2.3*	6.6
	3.0	7.0	8.6*	4.0	5.5	2.5	3.6			1.7	2.3*	7.1
Blade down	1.5	6.9	9.0*	3.9	5.4	2.4	3.5			1.6	2.4*	7.2
	0	7.0	9.8*	3.8	5.5	2.2	3.3			1.6	2.5	7.0
	-1.5	6.5	10.1*	3.4	5.3	2.0	3.2			1.8	2.8	6.5
	-3.0	6.1	9.7*	3.1	5.0					2.3	2.9*	5.5
	7.5			4.3	4.5*					2.9*	2.9*	3.9
	6.0			4.2	4.8*	2.6	4.1*			2.4*	2.4*	5.6
Blade up	4.5	6.0*	6.0*	4.1	5.5*	2.6	4.3*			1.8	2.3*	6.6
	3.0	7.4	8.6*	4.1	5.5*	2.6	4.3*			1.8	2.3*	7.1
	1.5	7.2	9.0*	4.1	6.1*	2.5	4.5*			1.7	2.4*	7.2
	0	7.4	9.8*	4.0	6.2*	2.3	4.6*			1.7	2.8*	7.0
	-1.5	7.0	10.1*	3.6	6.5*	2.2	4.2*			1.9	3.4*	6.5
	-3.0	6.6	9.7*	3.4	5.2*					2.5	2.9*	5.5

## Stick 2.45 m

Under-carriage	m	3.0m		4.5m		6.0m		7.5m		m		
S	7.5									2.6*	2.6*	4.2
	6.0									2.2*	2.2*	5.9
	4.5			3.9	4.2*	2.3	3.6			1.8	2.0*	6.8
	3.0	6.7	8.2*	3.7	5.4*	2.3	3.6			1.5	2.1*	7.3
	1.5	6.5	9.0*	3.7	5.3	2.2	3.5			1.4	2.2*	7.4
	0	6.5	9.7*	3.5	5.4	2.0	3.3			1.4	2.3	7.2
Blade up	-1.5	6.0	10.0*	3.2	5.2	1.9	3.1			1.5	2.6	6.7
	-3.0	5.7	10.0*	2.9	4.9					1.9	2.9*	5.7
	7.5			4.2	4.2*					2.6*	2.6*	4.2
	6.0			4.1	4.6*	2.5	3.6			2.2*	2.2*	5.9
	4.5			4.1	4.6*	2.5	3.6			1.9	2.0*	6.8
	3.0	7.0	8.2*	3.9	5.4*	2.5	3.6			1.6	2.1*	7.3
Blade down	1.5	6.9	9.0*	3.9	5.4	2.4	3.5			1.5	2.2*	7.4
	0	6.9*	9.7*	3.8	5.4	2.2	3.4			1.5	2.4	7.2
	-1.5	6.5	10.0*	3.4	5.3	2.1	3.2			1.7	2.6	6.7
	-3.0	6.2	10.0*	3.1	5.0					2.1	2.9*	5.7
	7.5			4.2*	4.2*					2.6*	2.6*	4.2
	6.0			4.3	4.6*	2.7	4.0*			2.0*	2.0*	6.8
Blade up	4.5	7.4	8.2*	4.1	5.4*	2.6	4.2*			1.7	2.1*	7.3
	3.0	7.2	9.0*	4.1	6.0*	2.5	4.4*			1.6	2.2*	7.4
	1.5	7.3	9.7*	4.0	6.2*	2.4	4.5*			1.6	2.5*	7.2
	0	7.0	10.0*	3.6	6.3*	2.2	4.4*			1.8	3.0*	6.7
	-1.5	6.6	10.0*	3.4	5.6*					2.3	2.9*	5.7
	-3.0	6.6	10.0*	3.4	5.6*					2.3	2.9*	5.7

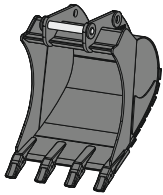
## Stick 2.65 m

Under-carriage	m	3.0m		4.5m		6.0m		7.5m		m		
S	7.5									2.3*	2.3*	4.6
	6.0									1.9*	1.9*	6.1
	4.5			2.5*	2.5*	2.3	3.6			1.7	1.9*	7.0
	3.0	6.7	7.9*	3.7	5.2*	2.4	3.6			1.4	1.9*	7.5
	1.5	6.4	8.9*	3.6	5.3	2.3	3.5			1.3	2.0*	7.6
	0	6.5	9.6*	3.5	5.3	2.1	3.3			1.3	2.2*	7.4
Blade up	-1.5	6.0	9.9*	3.2	5.3	1.9	3.2			1.4	2.5	6.9
	-3.0	5.7	10.3*	2.9	4.9					1.8	2.9*	6.0
	7.5			2.5*	2.5*					2.3*	2.3*	4.6
	6.0			3.9*	3.9*	2.3*	2.3*			1.9*	1.9*	6.1
	4.5			4.1	4.5*	2.6	3.7			1.8	1.9*	7.0
	3.0	7.1	7.9*	3.9	5.2*	2.5	3.6			1.6	1.9*	7.5
Blade down	1.5	6.8	8.9*	3.9	5.3	2.4	3.6			1.5	2.0*	7.6
	0	6.9	9.6*	3.8	5.4	2.3	3.4	1.5	2.3	1.5	2.2*	7.4
	-1.5	6.5	9.9*	3.5	5.4	2.1	3.2			1.6	2.5	6.9
	-3.0	6.2	10.3*	3.1	5.0					2.0	2.9*	6.0
	7.5			2.5*	2.5*					2.3*	2.3*	4.6
	6.0			3.9*	3.9*	2.3*	2.3*			1.9*	1.9*	6.1
Blade up	4.5			4.3	4.5*	2.7	3.8*			1.9*	1.9*	7.0
	3.0	7.4	7.9*	4.1	5.2*	2.7	4.1*			1.7	1.9*	7.5
	1.5	7.2	8.9*	4.0	5.9*	2.6	4.4*			1.6	2.0*	7.6
	0	7.2	9.6*	4.0	6.1*	2.4	4.5*			1.6	2.2*	7.4
	-1.5	7.0	9.9*	3.7	6.3*	2.2	4.5*			1.7	2.7*	6.9
	-3.0	6.6	10.3*	3.4	5.9*					2.1	2.9*	6.0

Height Can be slewed through 360° In longitudinal position of undercarriage Max. reach \* Limited by hydr. capacity

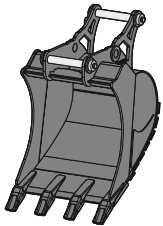
The load values are quoted in tons (t) at stick end (without bucket), and may be swung 360° on firm and even ground. Adjacent values are valid for the undercarriage when in the longitudinal position. Capacities are valid for 600mm wide track pads with adjusting cylinder in optimal position. Indicated loads are based on ISO 10567 standard and do not exceed 75% of tipping or 87% of hydraulic capacity (indicated via \*). Without bucket cylinder, link and lever the lift capacities will increase by 186kg. Lifting capacity of the excavator is limited by machine stability and hydraulic capacity. According to European Standard, EN 474-5: In the European Union excavators have to be equipped with an overload warning device, a load diagram and automatic safety check valves on hoist cylinders and stick cylinder(s), when they are used for lifting operations which require the use of lifting accessories. Determine maximum load lift from load lift chart displayed in the operator's cab or from load lift chart detailed in the operator's manual supplied with the machine.

# Attachments



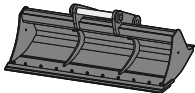
## Backhoe bucket TL 02

Mounting		direct mounting, SWA 33 mechanical, SWA 33 hydraulic, SWA 33 Solidlink, SWA 48 mechanical, SWA 48 hydraulic, SWA 48 Solidlink, Oilquick OQ 60-5, Oilquick OQ 65, S 60 mechanical, S 65 mechanical							
Cutting width	mm	300 <sup>3)4)</sup>	400 <sup>3)4)</sup>	500 <sup>4)</sup>	550	650	850	1,050	1,250
Capacity	m <sup>3</sup>	0.17 <sup>5)</sup>	0.24 <sup>5)</sup>	0.32 <sup>5)</sup>	0.29	0.36	0.50	0.65	0.80
Weight <sup>1)</sup>	kg	225	245	250	260	285	335	380	430



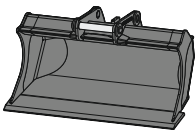
## 2in1 bucket HTL 02

Mounting		SWA 33 mechanical, SWA 33 hydraulic, SWA 33 Solidlink, SWA 48 mechanical, SWA 48 hydraulic, SWA 48 Solidlink							
Cutting width	mm	300 <sup>3)</sup>	400 <sup>3)</sup>	500 <sup>4)</sup>	650	850	1,050	1,250	
Capacity	m <sup>3</sup>	0.17	0.24	0.32	0.36	0.50	0.65	0.80	
Weight <sup>1)</sup>	kg	284	291	287	321	371	416	465	



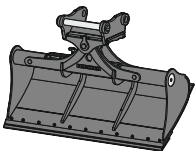
## Ditch cleaning bucket GRL rigid 02

Mounting		direct mounting, SWA 33 mechanical, SWA 33 hydraulic, SWA 33 Solidlink, SWA 48 mechanical, SWA 48 hydraulic, SWA 48 Solidlink							
Cutting width	mm	1,500		2,000			2,000		
Capacity	m <sup>3</sup>	0.50		0.48			0.65		
Weight <sup>1)</sup>	kg	362		351			385		



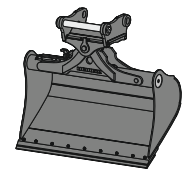
## Grading bucket PL 02

Mounting		SWA 33 mechanical, SWA 33 hydraulic, SWA 33 Solidlink, SWA 48 mechanical, SWA 48 hydraulic, SWA 48 Solidlink, Oilquick OQ 45-5, Oilquick OQ 60-5, Oilquick OQ 65, S 45 mechanical, S 60 mechanical, S 65 mechanical							
Cutting width	mm	1,400				1,600			
Capacity	m <sup>3</sup>	0.40				0.50			
Weight <sup>1)</sup>	kg	280				310			



## Ditch cleaning bucket GRL 90

Mounting		direct mounting, SWA 33 mechanical, SWA 33 hydraulic, SWA 33 Solidlink, SWA 48 mechanical, SWA 48 hydraulic, SWA 48 Solidlink										
Cutting width	mm	1,600	1,600	2,000	2,000	2,000	2,200	2,200	2,200	2,400	2,400	2,800
Capacity	m <sup>3</sup>	0.55	0.80	0.50	0.70	1.00	0.80	1.15	1.40	0.85	1.25	1.85
Weight <sup>2)</sup>	kg	690	850	695	875	935	910	985	995	890	1,000	1,090
Tilt angle		2 x 50°	2 x 50°	2 x 50°	2 x 50°	2 x 50°	2 x 50°	2 x 50°	2 x 50°	2 x 50°	2 x 50°	2 x 50°



## Tilt bucket SL 90

Mounting		direct mounting, SWA 33 mechanical, SWA 33 hydraulic, SWA 33 Solidlink, SWA 48 mechanical, SWA 48 hydraulic, SWA 48 Solidlink							
Cutting width	mm	1,400	1,500	1,500	1,600	1,600	1,600	1,600	
Capacity	m <sup>3</sup>	0.55	0.60	1.20	0.80	1.00	1.35	1.55	
Weight <sup>2)</sup>	kg	715	738	970	820	890	970	1,030	
Tilt angle		2 x 50°	2 x 50°	2 x 50°	2 x 50°	2 x 50°	2 x 50°	2 x 50°	

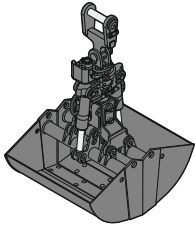
<sup>1)</sup> based on an attachment in a standard design with SWA 33 Solidlink quick coupler mounting

<sup>2)</sup> based on an attachment in a standard design with SWA 48 Solidlink quick coupler mounting

<sup>3)</sup> limited digging depth due to mounting for SWA 33 quick coupler

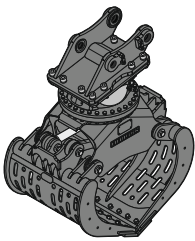
<sup>4)</sup> limited digging depth due to mounting for SWA 48 quick coupler

<sup>5)</sup> reduced capacity with direct mounting



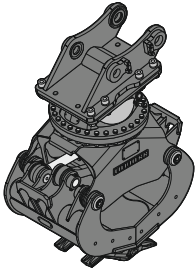
## Clamshell grab

GM 05B Clamshell buckets						
Mounting	direct mounting, SWA 33 mechanical, SWA 33 hydraulic, SWA 33 Solidlink, SWA 48 mechanical, SWA 48 hydraulic, SWA 48 Solidlink, Oilquick OQ 45-5, Oilquick OQ 60-5					
Shell width	mm	300	400	600	800	1,000
Capacity <sup>1)</sup>	m <sup>3</sup>	0.10	0.13	0.20	0.27	0.34
Opening width	mm	1,217	1,217	1,217	1,217	1,217
Weight <sup>2)</sup>	kg	480	515	545	585	660
GMZ 18 Clamshell buckets						
Mounting	direct mounting, SWA 33 mechanical, SWA 33 hydraulic, SWA 33 Solidlink, SWA 48 mechanical, SWA 48 hydraulic, SWA 48 Solidlink, Oilquick OQ 65, Oilquick OQ 70, Oilquick OQ 70/55					
Shell width	mm	320	400	600	800	
Capacity <sup>1)</sup>	m <sup>3</sup>	0.17	0.22	0.30	0.40	
Opening width	mm	1,462	1,462	1,392	1,392	
Weight <sup>3)</sup>	kg	745	780	790	840	



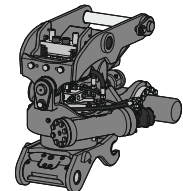
## Sorting grab SG 20B

Mounting	direct mounting, SWA 33 mechanical, SWA 33 hydraulic, SWA 33 Solidlink, SWA 48 mechanical, SWA 48 hydraulic, SWA 48 Solidlink, Oilquick OQ 60-5, Oilquick OQ 65, Oilquick OQ 70, Oilquick OQ 70/55								
Shell type	perforated				closed				
Shell width	mm	800	1,000	1,200	1,400	800	1,000	1,200	1,400
Capacity	m <sup>3</sup>	0.40	0.50	0.60	0.70	0.40	0.50	0.60	0.70
Max. closing force	kN	40	40	40	40	40	40	40	40
Weight <sup>4)</sup>	kg	750	795	840	885	765	810	850	895



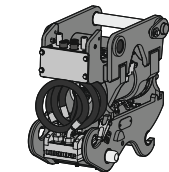
## Sorting grab SG 20B with universal shell

Mounting	direct mounting, SWA 33 mechanical, SWA 33 hydraulic, SWA 33 Solidlink, SWA 48 mechanical, SWA 48 hydraulic, SWA 48 Solidlink, Oilquick OQ 60-5, Oilquick OQ 65, Oilquick OQ 70, Oilquick OQ 70/55								
Shell width	mm	650							
Capacity	m <sup>3</sup>	0.15							
Max. closing force	kN	57							
Weight <sup>5)</sup>	kg	831							



## Tiltrotator TR 20B

Mounting machine side	SWA 33 mechanical, SWA 33 hydraulic, SWA 33 Solidlink, SWA 48 mechanical, SWA 48 hydraulic, SWA 48 Solidlink								
Mounting attachment side	SWA 33 mechanical, SWA 33 hydraulic, SWA 48 mechanical, SWA 48 hydraulic								
Weight <sup>6)</sup>	kg	641							
Rotation	360°								
Tilt	2 x 50°								



## Tilt unit LiTiU 33<sup>8)</sup> 9)

Mounting machine side	SWA 33 Solidlink								
Mounting attachment side	SWA 33 hydraulic, SWA 33 Solidlink								
Weight <sup>7)</sup>	kg	410							
Tilt	2 x 50°								

<sup>1)</sup> capacity specifications are theoretically determined values; fill level varies depending on the material being loaded

<sup>2)</sup> with standard suspension

<sup>3)</sup> with HD suspension

<sup>4)</sup> with standard bolt-on cutting edge, without quick coupler mounting

<sup>5)</sup> with Liebherr teeth Z 35 C, without quick coupler mounting

<sup>6)</sup> based on standard tiltrotator TR 20B with SWA 33 Solidlink quick coupler mounting machine side and SWA 33 hydraulic quick coupler mounting on the underside tiltrotator

<sup>7)</sup> based on standard tilt unit LiTiU 33 with SWA 33 Solidlink quick coupler mountings on both sides (underside of tilt unit and machine side quick coupler mounting)

<sup>8)</sup> on the machine side, a 14-pin signal contact strip is always required; switching takes place between tilting the LiTiU and the grab rotation circle for the attachment

<sup>9)</sup> on the machine side, the control unit for the second quick coupler is always required

# Serial equipment

## Undercarriage

Lashing eyes  
Sprocket double-toothed  
Track and carrier rollers, sealed and lifetime-lubricated  
Undercarriage S

## Uppercarriage

Centralised lubrication system (automatic)  
Engine hood with gas spring opening  
Filters accessible from ground level  
Front right rearview mirrors  
Hydraulic oil level, visible from ground level  
Lockable fuel tank cap  
Lockable service doors  
Main switch, manual, lockable  
Protection grid on radiator fan  
Sound insulation  
Swing drive gearbox oil level, visible from the cab  
Swing-out fan  
Windshield washer fluid tank

## Hydraulic system

Filter with integrated fine filters  
Hydraulic pressure measuring ports  
Hydraulic tank shut-off valve  
Liebherr Synchron Comfort System (LSC)  
Magnetic rod  
Pressure accumulator for controlled lowering of equipment with engine turned off

## Engine

Air filter with automatic dust ejector  
Automatic engine idling / speed increase, controlled via joystick sensors  
Common-Rail injection system  
Exhaust gas after-treatment system – DOC + DPF + SCR  
Fixed geometry turbocharger  
Fuel fine filter  
Fuel pre-filter and water separator  
Fuel priming pump  
Intercooler  
Power Pack EU Stage V  
Stepless adjustable engine speed

## Cab

7" multifunction colour touchscreen  
Air conditioning, automatic, tri-zone, controlled via display  
Armrests adjustable in length, height and inclination  
Bottle holder  
Cab air filters housing, accessible from ground level  
Cab door sliding windows  
Coat hook  
DEF consumption on touchscreen  
DEF level on touchscreen  
Electric socket in cab (12V)  
Electric socket in cab (24V)  
Emergency hammer  
Fuel consumption on touchscreen  
Fuel level on touchscreen  
Impact resistant roof window  
Interior lighting  
Laminated right hand side window  
LiDAT Plus (Liebherr data transfer system)\*  
Mechanical hour meter, visible from ground level  
Rain hood over front window opening  
Rearview mirror  
Rear view monitoring camera  
Rear window emergency exit  
Roll-down sun blinds for windscreen and roof window  
ROPS safety cab structure (ISO 12117-2)  
Rubber floor mat, fixed on floor and removable  
Shortcut buttons on joystick configurable  
Storage nets  
Storage spaces  
Tilttable console left  
Tinted windows  
Visco-elastic damping  
Windscreen wiper and washer  
Work mode selector

## Equipment

Boom cylinders regeneration  
Pipe fracture safety valve for stick cylinder  
Pipe fracture safety valves for boom cylinders  
SAE split flanges on high pressure lines  
Stick cylinder regeneration

\* optionally extendable after one year

# Equipment standard / option

## Undercarriage

Chain guide 1 piece	•
Chain guide 3 pieces	+
Dozer and stabilizer blade 2,500 mm	+
Dozer and stabilizer blade 2,600 mm	+
Dozer and stabilizer blade 2,700 mm	+
Rubber track pads 500 mm	+
Special painting	+
Steps	+
Steps wide	•
Track pads triple grouser 500 / 700 / 900 mm	+
Track pads triple grouser 600 mm	•
Tracks, sealed and greased, with track pads	•
Undercarriage storage compartment	+

## Upper-carriage

Air pre-filter with cyclonical dust trap	+
Counterweight standard 2.8 t	•
Electric socket on upper-carriage (24 V)	+
Extended tool set including tool box	+
Flashing beacon on upper-carriage, rear, LED, 1 piece	+
Fuel anti-theft protection	+
Headlight on upper-carriage, lateral right, LED+, 1 piece	+D
Headlights on upper-carriage, front, halogen, 2 pieces, protections included	•D
Headlights on upper-carriage, front, LED+, 2 pieces, protections included	+D
Headlights on upper-carriage, rear, LED+, 2 pieces	+D
Pre-heating system for fuel	+
Reflective warning stickers	+
Reversible fan drive	+
Special painting	+
Tank refilling pump fuel	+
Tool set including storage case	•

## Hydraulic system

Bypass filter for hydraulic oil	+
Liebherr hydraulic oil	•
Liebherr hydraulic oil, adapted for extreme climate conditions	+
Liebherr hydraulic oil, biodegradable	+

## Engine

Automatic engine shutdown after idling	+
--	---

# Equipment standard / option



## Cab

2" seat belt with retractor	●
3" seat belt with retractor, orange colour	+
4-points seat belt	+
Acoustic travel alarm deactivatable	+
Attachment continuous operation system	+
Auxiliary heater programmable	+
Bottom windscreen wiper	+
Cool box (12V)	+
Dark tinted windows	+
Emergency stop in cab	+
FGPS front guard	+
FGPS front guard tiltable	+
Filter for hydraulic hammer return flow	+
Fire extinguisher	+
First-aid box	+
Flashing beacon on cab, LED, 1 piece	+
Footrest	+
FOPS top guard	+
Handrests elevated for joysticks	+
Headlights on cab, front, halogen, 2 pieces	● <sup>1)</sup>
Headlights on cab, front, LED+, 2 pieces	+ <sup>1)</sup>
Headlights on cab roof, front, LED+, 2 pieces	+ <sup>1)</sup>
High pressure circuit switchable on pedals or mini-joystick	+
High pressure circuit with Tool Control (20 attachment adjustments on display)	+
Impact resistant one-piece windscreen	+
Keyed immobiliser	+
Lightbar on cab	+
Medium pressure circuit	+
Mini-joysticks proportional	●
Movement restriction for stick	+
Operator's seat Comfort	+
Operator's seat Premium	+
Operator's seat Standard	●
Overload warning system	+
Preparation for machine guidance system	+
Radio Comfort	+
Radio pre-installation	●
Retractable laminated two-piece windscreen	●
Right hand side view monitoring camera	●
Roof sun shield	+
Roof window wiper	+
Special painting	+
Sun visor	+
SuperFinish	+
Switch between high pressure and bucket cylinder controls	+
Windscreen bottom protection grid	+



## Equipment

Bucket cylinder rod protection	+
Centralised lubrication extended for connecting link	+
Centralised lubrication extended for quick coupler	+
Grapple hydraulic lines (bucket cylinder inactive)	+
Headlight guards on boom	+
Headlights on boom, halogen, 2 pieces	● <sup>1)</sup>
Headlights on boom, LED+, 2 pieces	+ <sup>1)</sup>
Headlights on stick, right and left, LED+, 2 pieces, protections included	+ <sup>1)</sup>
Leak oil line for attachment	+
Liebherr bucket range	+
Liebherr tooth system	+
Lifting eye on stick	+
Load holding valve for bucket cylinder	+
Mono boom 4.60 m	+
Mono boom offset 4.30 m	+
Quick coupler SWA 33 hydraulic	+
Quick coupler SWA 33 mechanical	+
Quick coupler SWA 48 hydraulic	+
Quick coupler SWA 48 mechanical	+
Security for hoist cylinders	+
Solidlink electric signal plug for quick coupler SWA 48	+
Solidlink for quick coupler SWA 33 hydraulic	+
Solidlink for quick coupler SWA 48 hydraulic	+
Special painting	+
Stick 2.05 m	+
Stick 2.25 m	+
Stick 2.45 m	+
Stick 2.65 m	+
Stick bottom protection	+
Tool Management	+
Two-piece boom 4.85 m	+
Two-piece boom offset 4.90 m	+

● = Standard, + = Option

<sup>1)</sup> Equipment not individually available, but only as predefined packages

Non-exhaustive list, please contact us for further information.

Options and /or special equipment, supplied by vendors other than Liebherr, are only to be installed with the knowledge and approval of Liebherr in order to retain warranty.

## Liebherr-France SAS

2 avenue Joseph Rey, B.P. 90287 • 68005 Colmar Cedex, France • Phone +33 389 213030  
info.lfr@liebherr.com • www.liebherr.com • www.facebook.com/LiebherrConstruction