

# Pallet forks

**PG SWA 33 FEM II**

**PG SWA 48 FEM II**

**PG SWA 33 FEM III**

**PG SWA 48 FEM III**

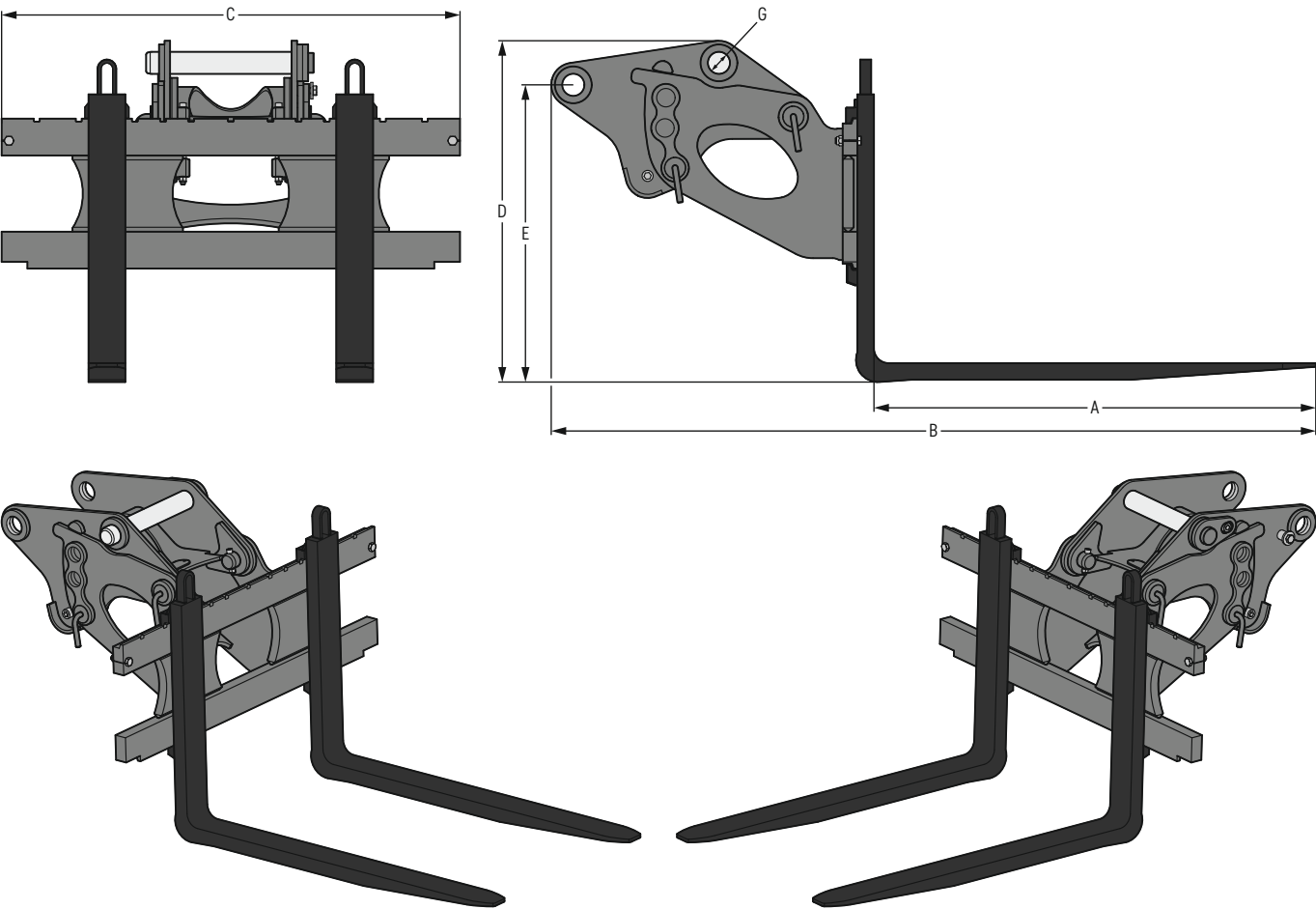
**PG SW stick FEM II**

# LIEBHERR

Attachments



# Pallet fork PG SWA 33 FEM II



## Machine range

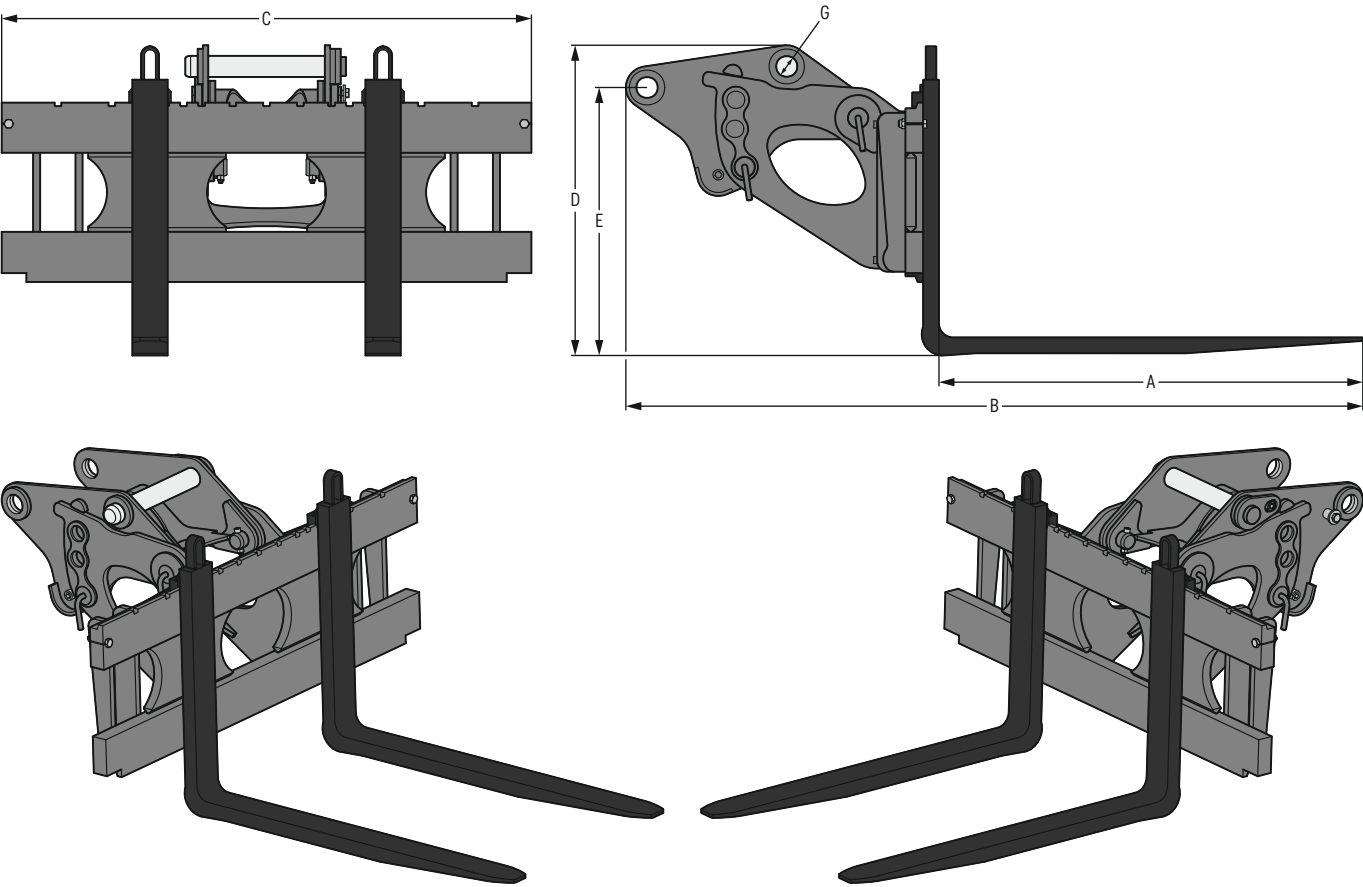
Liebherr machines		Other machine makes	
Wheeled excavator – Compact	A 909 Compact – A 918 Compact	Weight class	approx. 9–24 t
Wheeled excavator	A 914 – A 920	(see operating manual for exact specification)	
Crawler excavator – Compact	R 914 Compact		
Crawler excavator	R 918		
Railroad excavator	A 922 Rail, A 924 Rail, RE 25 M		

## Dimensions / weights

A	B	C	D	E	G		
Fork length	Length	Width	Height	Structure height	Bolt diameter	Lift capacity	Weight
mm	mm	mm	mm	mm	mm	kg	kg
1.200	2.077	1.245	927	807	60	2.500	330
1.400	2.077	1.245	927	807	60	2.500	363



# Pallet fork PG SWA 33 FEM III



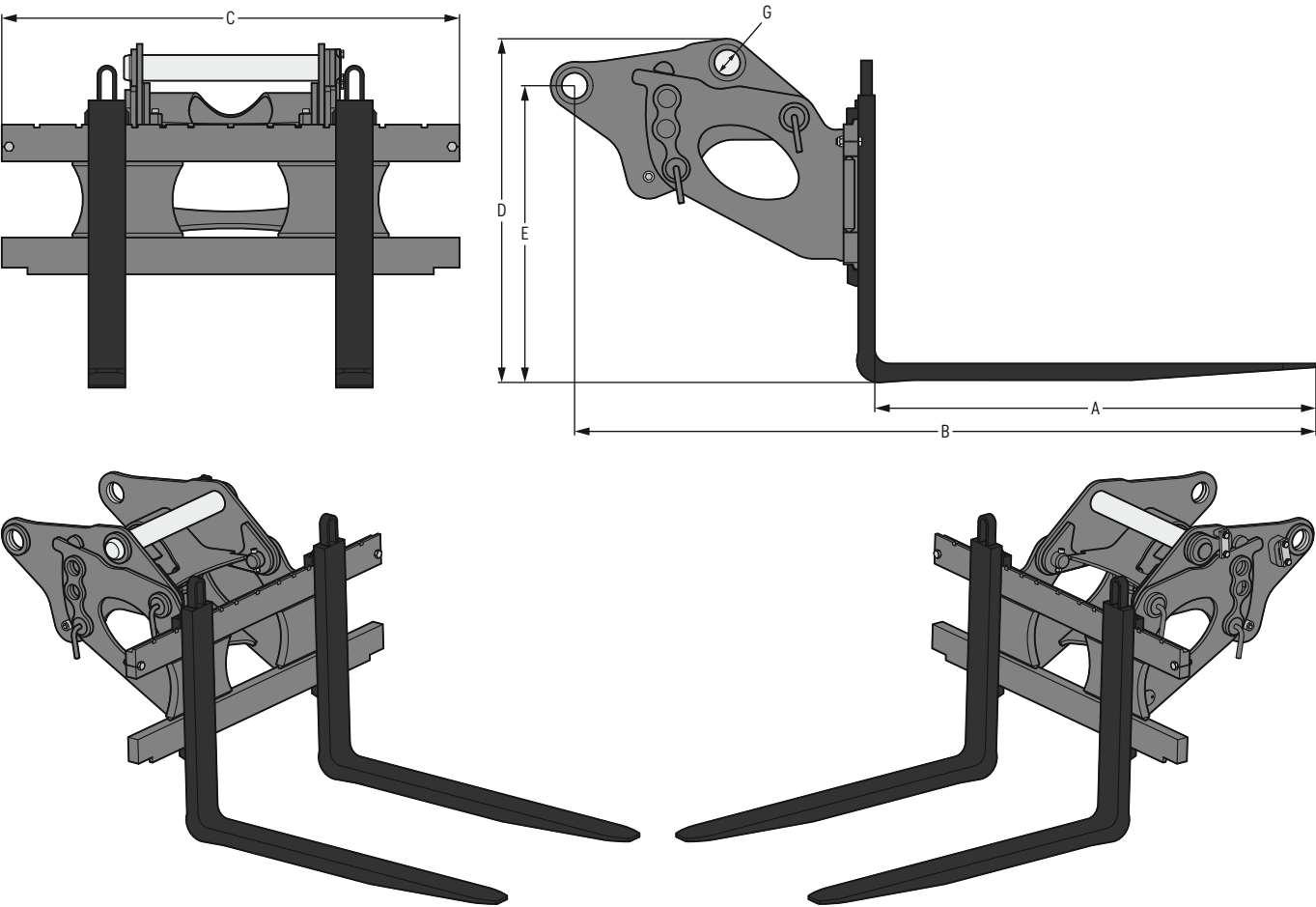
## Machine range

Liebherr machines		Other machine makes	
Wheeled excavator – Compact	A 913 Compact – A 918 Compact	Weight class	approx. 13–24 t
Wheeled excavator	A 914 – A 920	(see operating manual for exact specification)	
Crawler excavator – Compact	R 914 Compact, R 920 Compact		
Crawler excavator	R 918		
Railroad excavator	A 922 Rail, A 924 Rail, RE 25 M		

## Dimensions / weights

A	B	C	D	E	G		
Fork length	Length	Width	Height	Structure height	Bolt diameter	Lift capacity	Weight
mm	mm	mm	mm	mm	mm	kg	kg
1.200	2.087	1.500	879	759	60	5.000	579
1.500	2.087	1.500	879	759	60	5.000	620

# Pallet fork PG SWA 48 FEM II



## Machine range

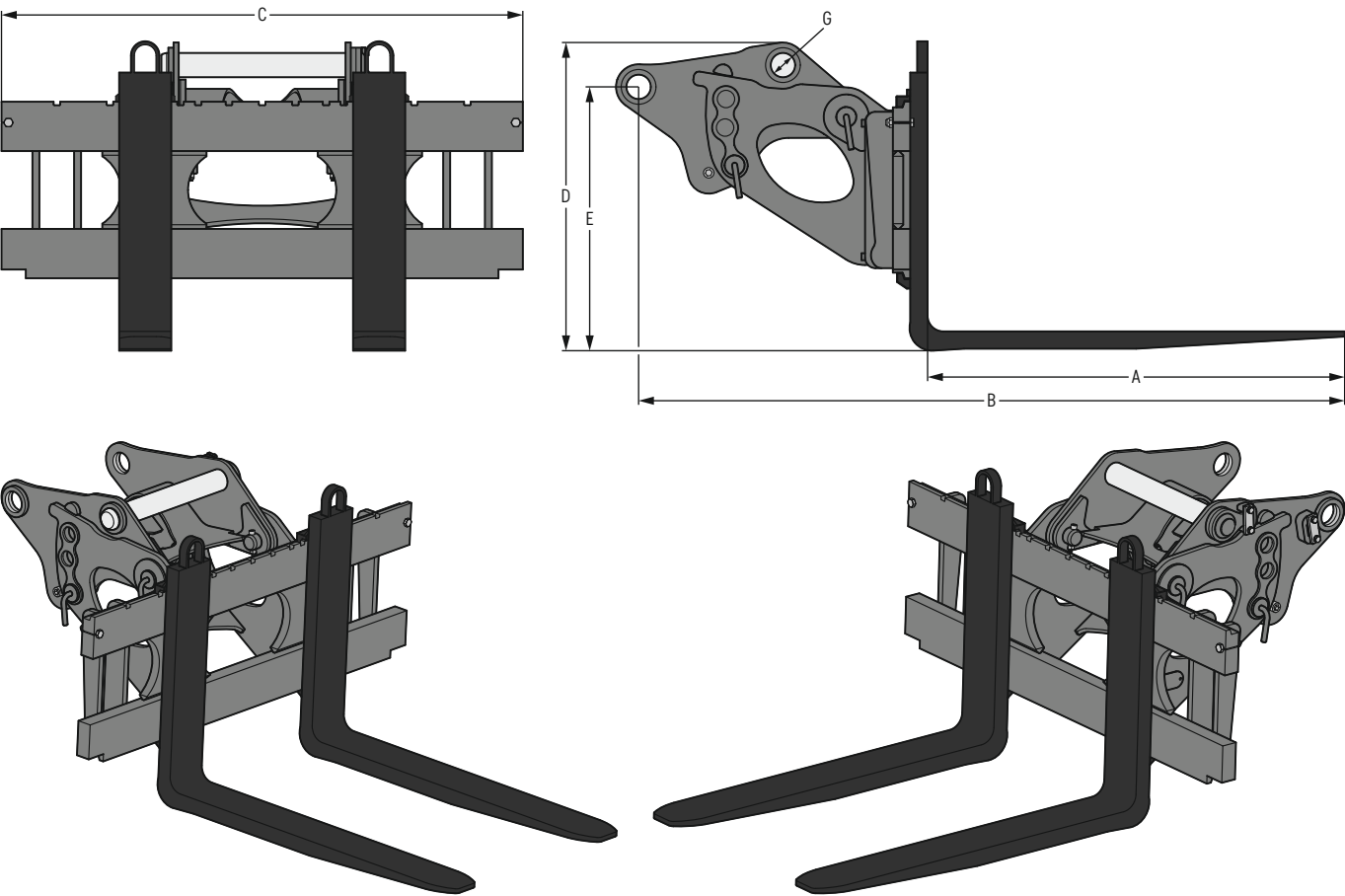
Liebherr machines	
Wheeled excavator – Compact	A 913 Compact – A 918 Compact
Wheeled excavator	A 914 – A 924 Heavy Lift
Crawler excavator – Compact	R 914 Compact – R 936 Compact
Crawler excavator	R 918 – R 936
Railroad excavator	A 922 Rail, A 924 Rail, RE 25 M

Other machine makes	
Weight class	approx. 13–38 t
(see operating manual for exact specification)	

## Dimensions / weights

A	B	C	D	E	G		
Fork length	Length	Width	Height	Structure height	Bolt diameter	Lift capacity	Weight
mm	mm	mm	mm	mm	mm	kg	kg
1.200	2.017	1.245	935	807	70	2.500	345
1.400	2.017	1.245	935	807	70	2.500	378

# Pallet fork PG SWA 48 FEM III



## Machine range

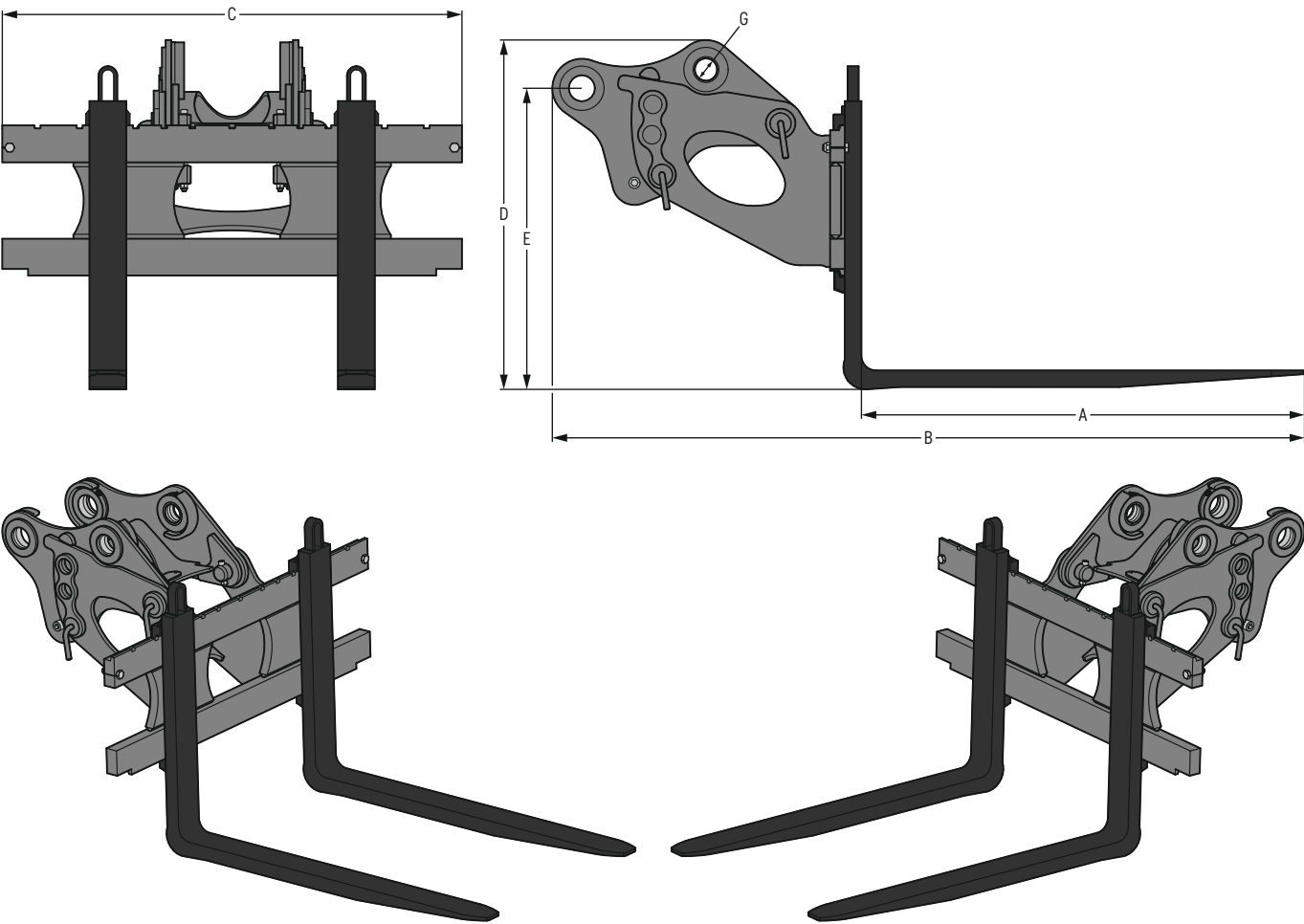
Liebherr machines	
Wheeled excavator – Compact	A 918 Compact
Wheeled excavator	A 918 – A 924 Heavy Lift
Crawler excavator – Compact	R 920 Compact – R 936 Compact
Crawler excavator	R 918 – R 936
Railroad excavator	A 922 Rail, A 924 Rail, RE 25 M

Other machine makes	
Weight class	approx. 18–38 t
(see operating manual for exact specification)	

## Dimensions / weights

A	B	C	D	E	G	Lift capacity	Weight
Fork length	Length	Width	Height	Structure height	Bolt diameter	kg	kg
mm	mm	mm	mm	mm	mm		
1.200	2.032	1.500	887	759	70	5.000	585
1.500	2.032	1.500	887	759	70	5.000	626

# Pallet fork SW stick FEM II



## Machine range

Liebherr machines	
Railroad excavator	A 922 Rail, A 924 Rail, RE 25 M

Other machine makes	
Weight class	approx. 20–24 t
(see operating manual for exact specification)	

## Dimensions / weights

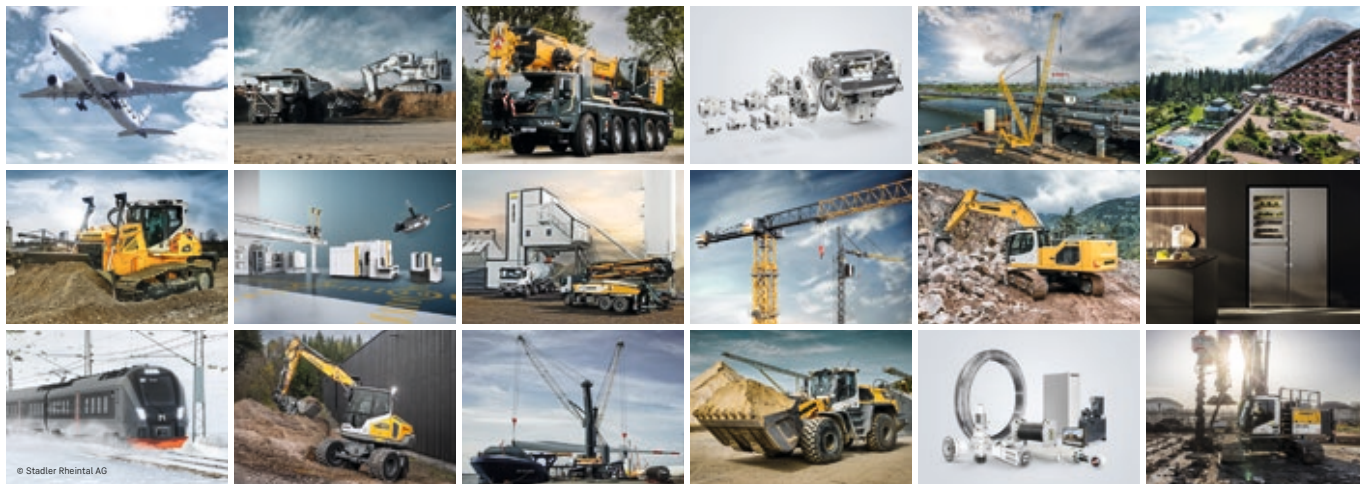
A	B	C	D	E	G	Lift capacity	Weight
Fork length	Length	Width	Height	Structure height	Bolt diameter	kg	kg
mm	mm	mm	mm	mm	mm		
1.200	2.037	1.245	947	816	60	2.500	325
1.400	2.037	1.245	947	816	60	2.500	358

# Equipment

	PG SWA 33 FEM II	PG SWA 33 FEM III	PG SWA 48 FEM II	PG SWA 48 FEM III	PG SW stick FEM II
Mounting					
SW stick mechanical					•
SWA 33	•	•			
SWA 48			•	•	

• = Standard, + = Option

# The Liebherr Group



## Global and independent: more than 75 years of success

Liebherr was founded in 1949 when, with the development of the world's first mobile tower crane, Hans Liebherr laid the foundations for a family-run company which now has more than 50,000 employees and comprises over 150 companies across every continent. The holding company of the Group is Liebherr-International AG in Bulle, Switzerland, whose shareholders are exclusively members of the Liebherr family.

## Technology leadership and pioneering spirit

Liebherr is a pioneer and its forward-looking approach has seen it make important contributions to technology history over a wide variety of industries. Employees throughout the world continue to share the courage of the company founder, sharing a passion to produce innovative products and a determination to provide world-leading equipment and machinery.

## Diversified product programme

Liebherr is one of the world's biggest construction machine manufacturers and provides high-quality, user-oriented products and services. Its product range includes the product segments earthmoving, material handling, deep foundation, mining, mobile and crawler cranes, tower cranes, concrete technology, maritime cranes, aerospace and transportation systems, gear technology and automation systems, refrigerators and freezers, components and hotels.

## Customised solutions and maximum customer value

Liebherr solutions are characterised by precision, implementation and longevity. The company is committed to technological excellence and to providing customers with solutions that match their needs exactly. For Liebherr, customer focus does not end with delivery of a product but continues through a comprehensive range of back-up and support services.

[www.liebherr.com](http://www.liebherr.com)

## Liebherr-Hydraulikbagger GmbH

Liebherrstraße 12 • 88457 Kirchdorf (Iller), Germany • Phone +49 7354 80-0  
[info.lhb@liebherr.com](mailto:info.lhb@liebherr.com) • [www.liebherr.com](http://www.liebherr.com) • [www.facebook.com/LiebherrConstruction](https://www.facebook.com/LiebherrConstruction)