

# A small crane with a massive character

## LTR 1060

Telescopic crawler crane  
Grue télescopique sur chenilles

# LIEBHERR

Mobile and crawler cranes



65 USt



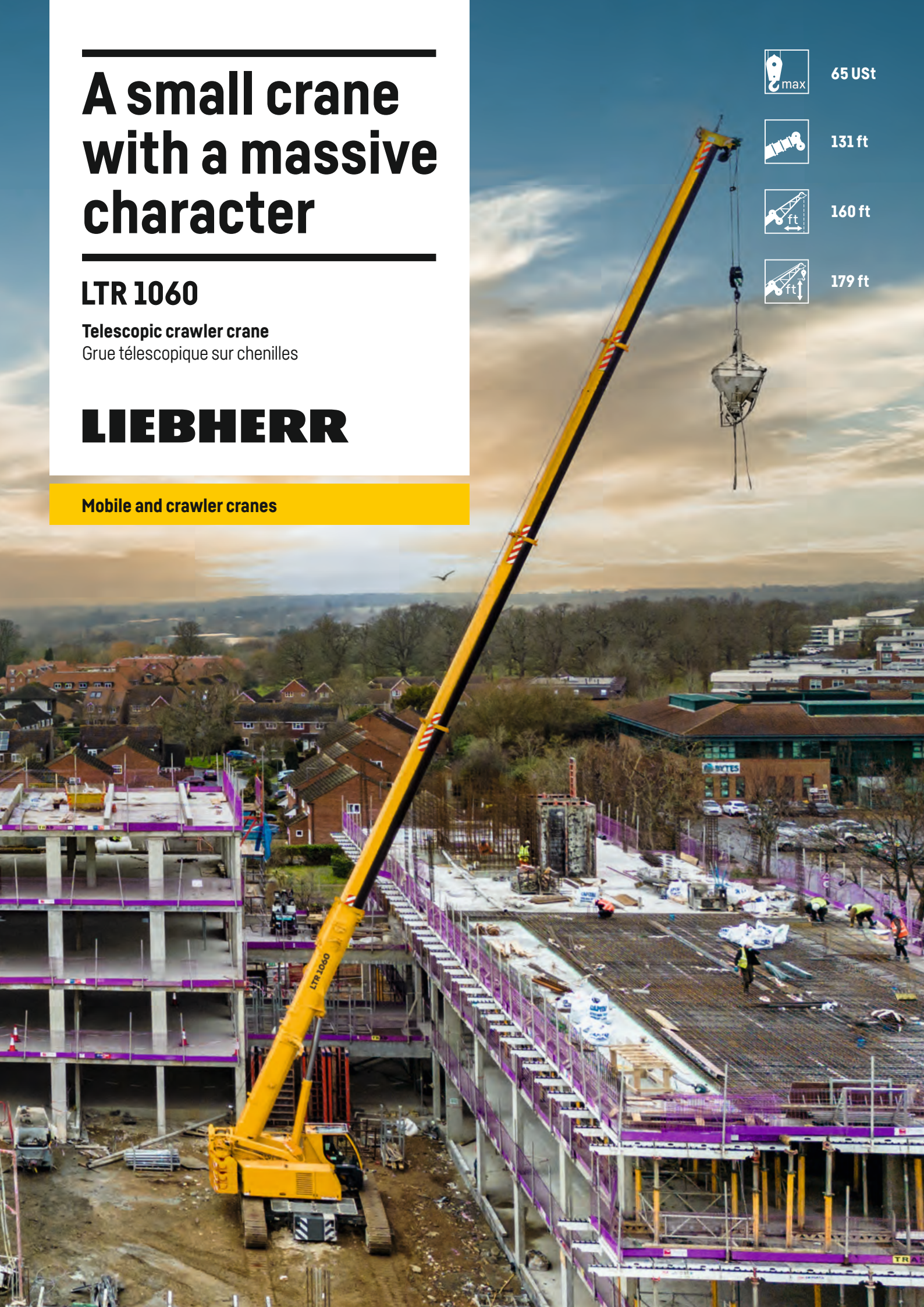
131 ft



160 ft



179 ft



# Technical data

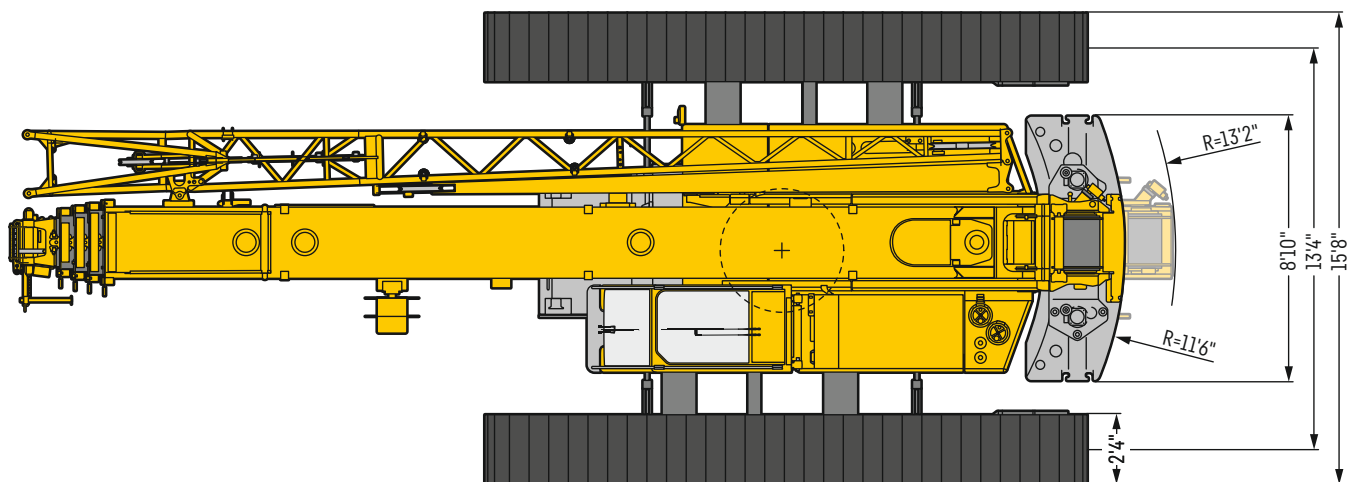
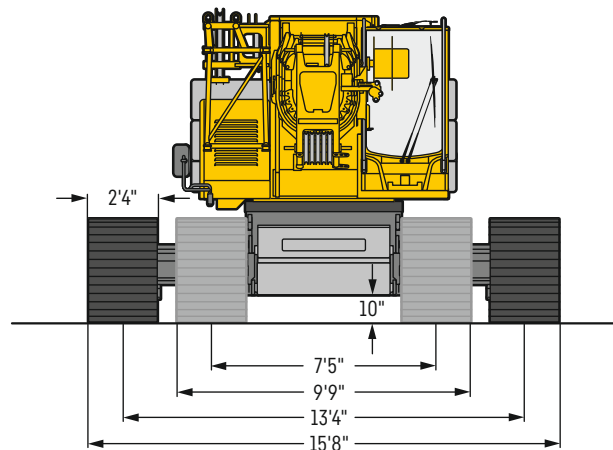
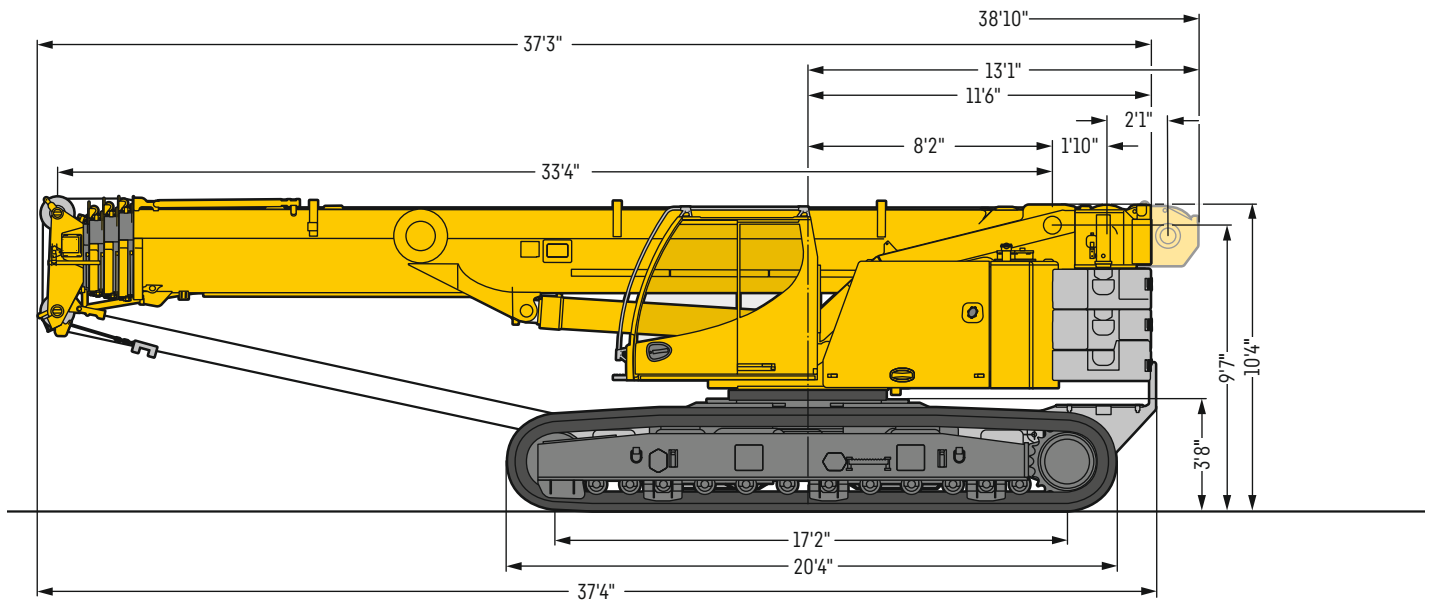
## Caractéristiques technique

---

<b>Dimensions</b>	
Encombrement .....	3
<b>Telescopic crawler crane</b>	
Grue télescopique sur chenilles .....	4-5
<b>Transportation plan</b>	
Plan de transport .....	6-7
<b>Economical transportation and simple erection</b>	
Transport économique et montage simplifié .....	8
<b>Assembly – Version A</b>	
Montage – Variante A .....	9-10
<b>Assembly – Version B</b>	
Montage – Variante B .....	11
<b>Crane operation</b>	
Utilisation de la grue .....	12-14
<b>Crane data</b>	
Dates de la grue .....	15
<b>Overview of load charts</b>	
Aperçu des tableaux de charge .....	16
<b>Boom/jib combinations</b>	
Configurations de flèche .....	17
<b>T</b> .....	18-26
<b>TK</b> .....	27-28
<b>TK</b> .....	29-31
<b>Equipment</b>	
Equipement .....	32-37
<b>Description of symbols</b>	
Explication des symboles .....	38
<b>Remarks</b>	
Remarques .....	39

# Dimensions

## Encombrement



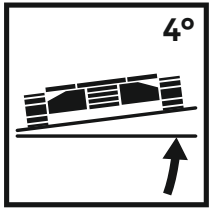
US2456.02



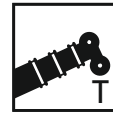
# LTR 1060

---

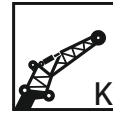




**Tables for terrain inclines up to maximum 4°**  
Tableaux pour les inclinaisons du terrain jusqu'à 4° max.



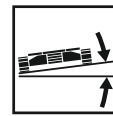
131 ft



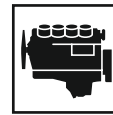
31 ft - 52 ft



8 ft



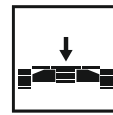
max. 4°



129 kW (175 h.p.)



34,400 lb



22,050 lb



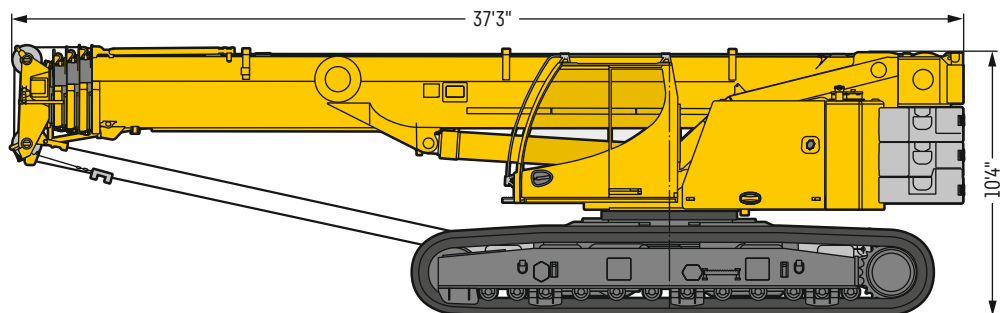
# Transportation plan

## Plan de transport

With slewing platform counterweight and centre counterweight · Avec contrepoids de la partie tournante et contrepoids central

Width · Largeur: 9 ft 10 in

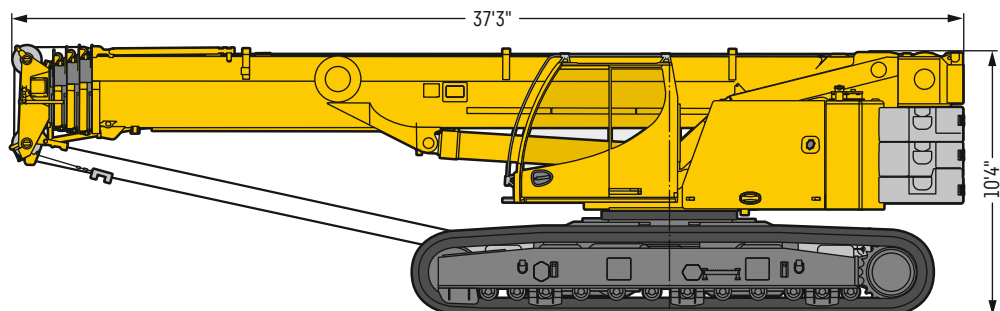
138,000 lb



With slewing platform counterweight and without centre counterweight · Avec contrepoids de la partie tournante sans contrepoids central

Width · Largeur: 9 ft 10 in

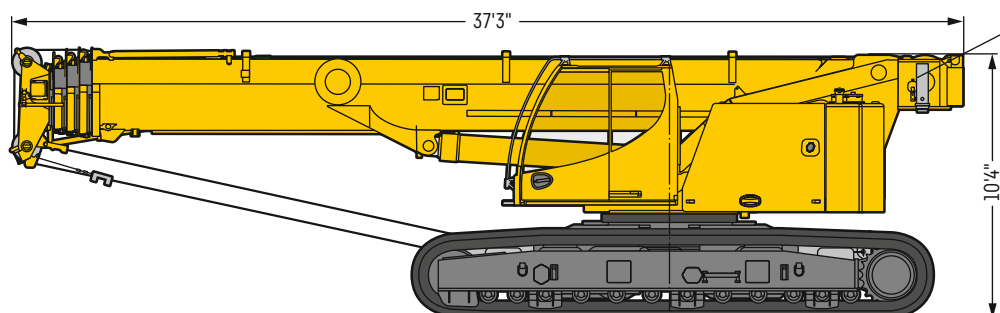
115,740 lb



Without slewing platform counterweight and without centre counterweight · Sans contrepoids de la partie tournante et sans contrepoids central

Width · Largeur: 9 ft 10 in

82,675 lb



optional  
en option

US2399.02

# Transportation plan

## Plan de transport

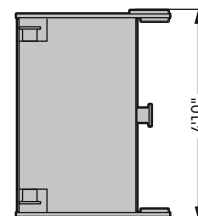
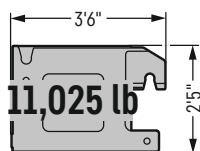
### Counterweight versions

#### Variantes de contreponds

#### Center counterweight

#### Contreponds de base

(2 x)

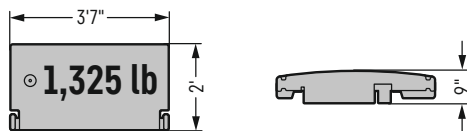


#### Part A - Partie A

#### Replacement ballast for winch 2

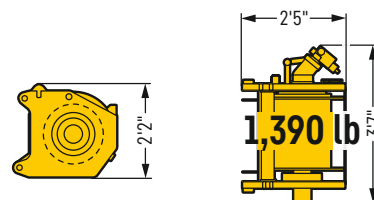
#### Contreponds de remplacement pour le treuil 2

(1 x)



#### Winch 2 incl. rope

#### Treuil 2 incl. câble

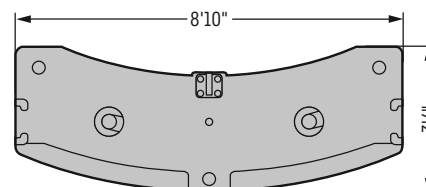
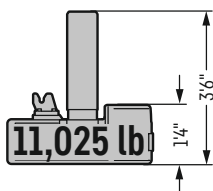


#### Part B - Partie B

#### Counterweight slabs

#### Contreponds de la partie tournante

(1 x)

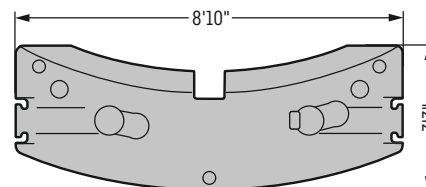


#### Part C - Partie C

#### Counterweight slabs

#### Contreponds de la partie tournante

(2 x)



US2408.01

	Part A - Partie A à 1,325 lb	Part B - Partie B à 11,025 lb	Part C - Partie C à 11,025 lb
 12,350 lb*	1x	1x	-
23,375 lb	1x	1x	1x
34,400 lb	1x	1x	2x

\*standard - standard

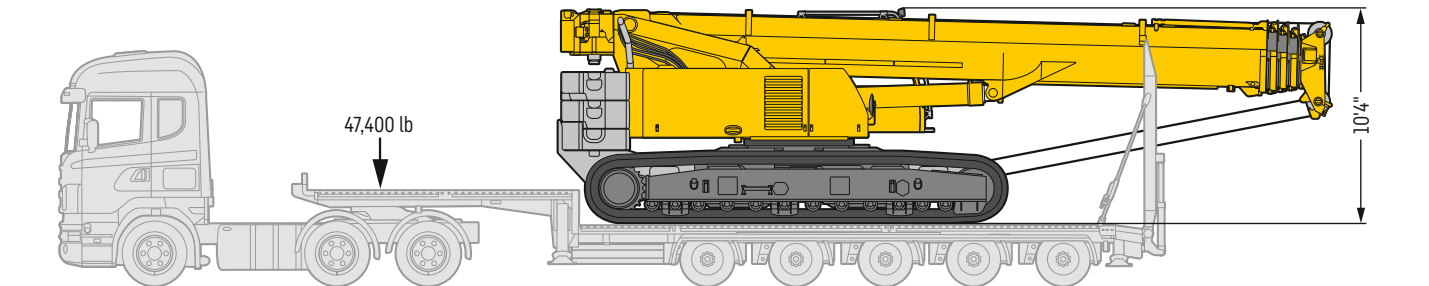
# Economical transportation and simple erection

## Transport économique et montage simplifié

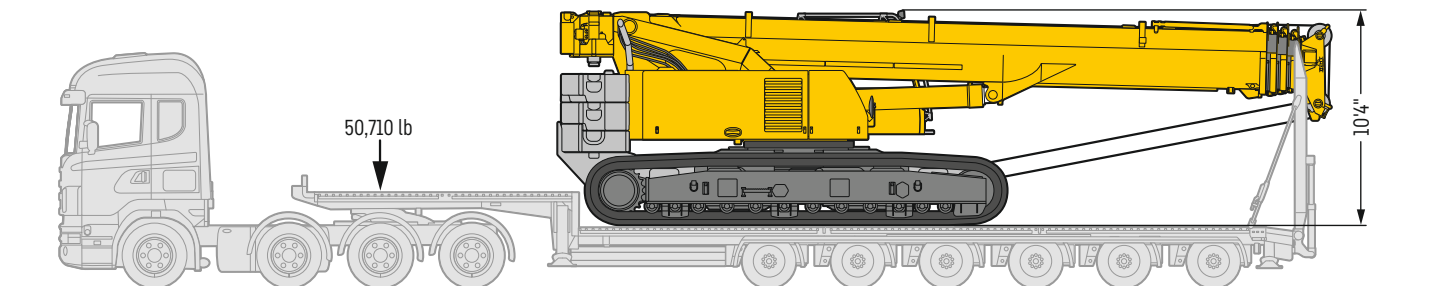
Transport example, crane without ballast  
Exemple de transport, grue sans contrepoids



Transport example, crane with complete ballast  
Exemple de transport, grue avec contrepoids complet



≤ 26,450 lb    ≤ 26,450 lb    ≤ 26,450 lb  
≤ 26,450 lb    ≤ 26,450 lb



≤ 22,050 lb    ≤ 22,050 lb    ≤ 22,050 lb  
≤ 22,050 lb    ≤ 22,050 lb    ≤ 22,050 lb

US2402.02

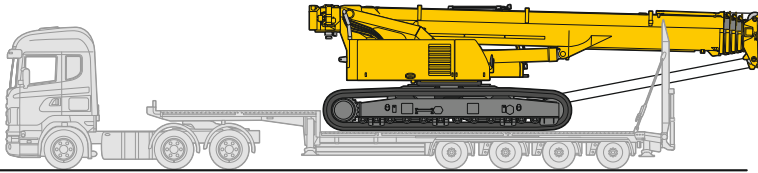


# Assembly – Version A

## Montage – Variante A

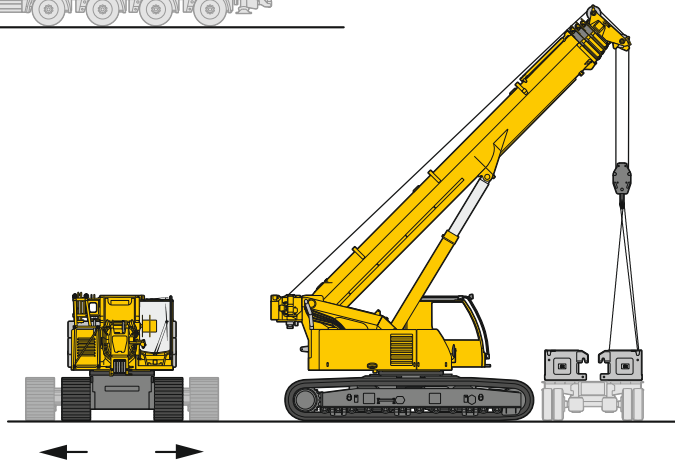
Without slewing platform counterweight and without centre counterweight  
Sans contrepoids de la partie tournante et sans contrepoids central

1

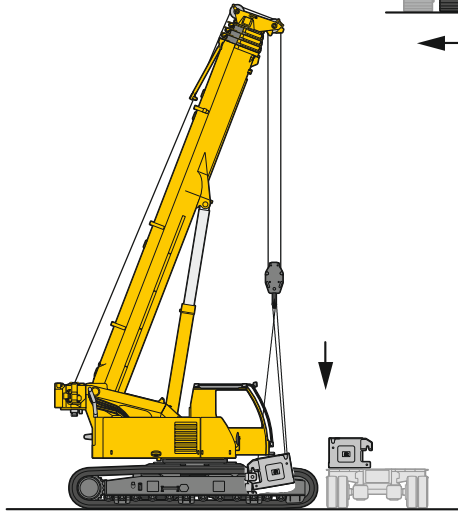


Total weight · Poids total: 82,700 lb  
Width · Largeur: 9 ft 10 in

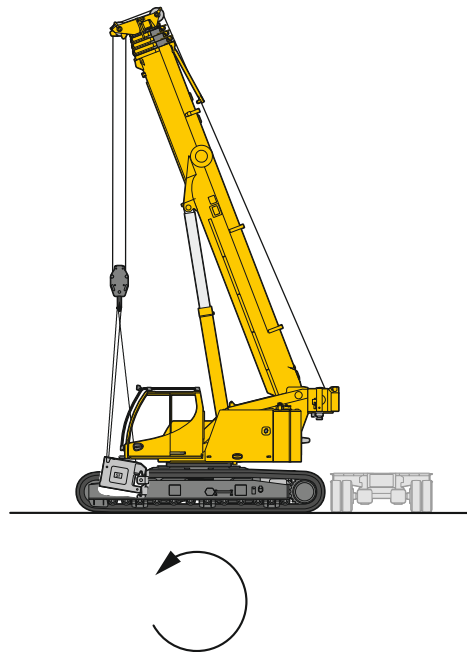
2



3



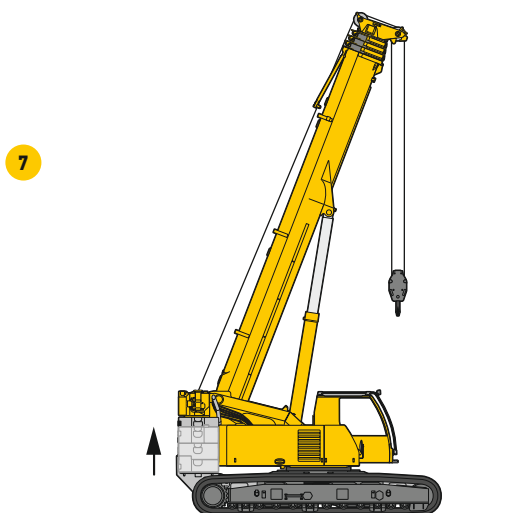
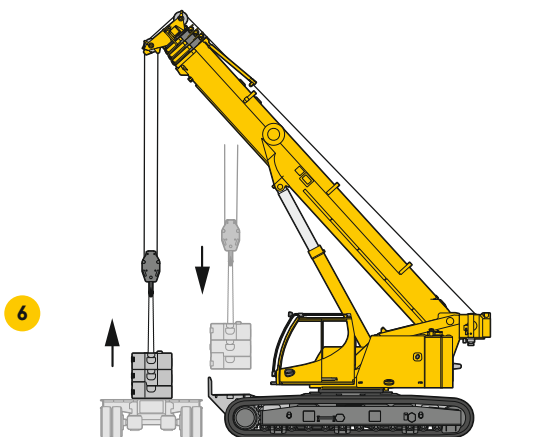
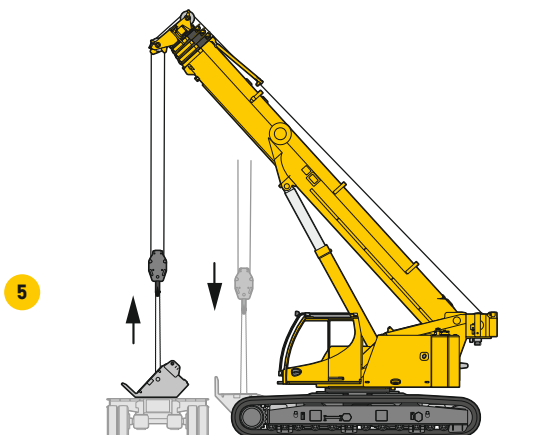
4



S2401.01

# Assembly – Version A

## Montage – Variante A

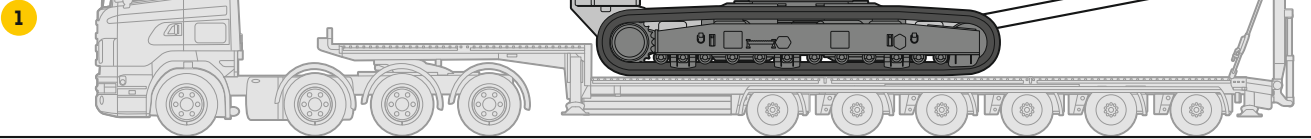


S2401.01

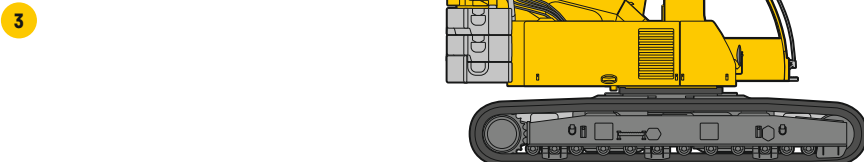
# Assembly – Version B

## Montage – Variante B

With slewing platform counterweight and centre counterweight  
Avec contrepoids de la partie tournante et contrepoids central



Total weight · Poids total: 138,000 lb  
Width · Largeur: 9 ft 10 in



S2400.03

# Crane operation with side inclination

## Utilisation de la grue en inclinaison latérale



Additional operational possibilities are offered by the load charts programmed as standard for working with main boom and assembly jib on surfaces with an inclination up to 4°.

Les possibilités d'application de la grue sont étendues grâce aux tableaux des charges programmés de série permettant d'utiliser la grue avec une inclinaison latérale pouvant aller jusqu'à 4°.



# Great operational diversity

## Grande polyvalence

### High flexibility

### Haute flexibilité

Due to its extraordinary cross-country mobility and the possibility to drive sensitively with full load, the LTR 1060 offers an extraordinary operation diversity.

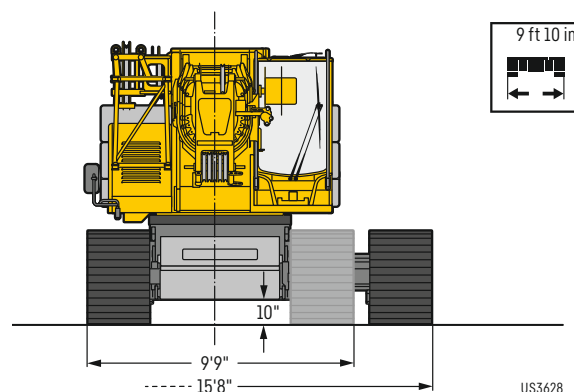
Grâce à son excellent comportement en tout-terrain et sa souplesse de déplacement à pleine charge, la LTR 1060 permet une utilisation extrêmement flexible.

### Telescopic crawlers

### Longerons télescopables

In cramped conditions the crawlers can be retracted hydraulically to a chassis width of 9 ft 10 in.

En cas d'espace restreint, les longerons peuvent être rentrés hydrauliquement. La largeur du véhicule n'est alors plus que de 9 ft 10 in de large.



Triple grouser track pads, Width 2 ft 4 in  
Tuiles à 3 nervures, Largeur 2 ft 4 in



Option  
Flat track pads, Width 2 ft 4 in  
Tuiles plates, Largeur 2 ft 4 in

# Intelligent crane control

## Commande intelligente de la grue

**With the mobile control and display unit BTT – Bluetooth Terminal the erection operations are comfortably and safely conducted within view.**

L'unité de commande et d'affichage mobile et le terminal Bluetooth BTT permettent de réaliser les opérations d'équipement avec un confort optimal et en toute sécurité grâce à un contact visuel.



**Track adjustment with BTT**  
Réglage de la voie avec le BTT








**Driving of the crawler chassis and complete crane operation with radio remote control (option)**

Déplacement des chenilles et pilotage intégral de la grue avec la commande radio à distance (en option)







# Crane data










## Dates de la grue

	<b>Total driving force</b> Puissance propulsive totale	92,200 lb
	<b>Total weight with 34,400 lb counterweight, 22,050 lb central ballast and 3-sheave hook block</b> Poids total avec contrepoids de 34,400 lb, lest central de 22,050 lb et moufle à crochet à 3 poulies	≈138,000 lb
	<b>Average ground pressure at 138,000 lb total weight and with 2'4" track pads</b> Pression au sol moyenne pour un poids total de 138,000 lb et des tuiles de 2'4"	12.2 lb/inch <sup>2</sup>
	<b>Travel speeds</b> Vitesses de translation	0 - 1.9 mph
	<b>Max. permissible gradability</b> Pente admissible maxi.	46 %

## Hakenflasche Hook block


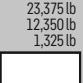

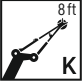

			
132,300 lb	7	14	880 lb
101,600 lb	5	11	880 lb
66,600 lb	3	7	570 lb
29,300 lb	1	3	400 lb
9,900 lb	-	1	165 lb


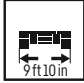

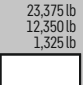
## Kranoberwagen Crane superstructure

			
 0 - 364 ft/min single line · au brin simple	15 mm	722 ft	10,100 lb
 0 - 364 ft/min single line · au brin simple	15 mm	722 ft	10,100 lb
 0 - 1.7 rpm			
 approx. 63 seconds to reach 83° boom angle env. 63 s jusqu'à 83°			
 approx. 270 seconds for boom extension from 33 ft - 131 ft env. 270 s pour passer de 33 ft - 131 ft			

# Overview of load charts

## Aperçu des tableaux de charge

					
34,400 lb 23,375 lb 12,350 lb 1,325 lb  	 	 	 	 	 
22,050 lb n.v. / n.h.	n.v. / n.h.	n.v. / n.h.	n.v. / n.h.	n.v. / n.h.	n.v. / n.h.
360°	±10°	360°	360°	360°	360°
34,400 lb 0 lb	-	360°	-	-	-
23,375 lb 12,350 lb 1,325 lb 0 lb	-	360°	n.v. / n.h.	360°	360°
0 lb	-	360°	±10°	360°	360°

 					
34,400 lb 23,375 lb 12,350 lb 1,325 lb  	 	 	 	 	 
22,050 lb -	-	360°	n.v. / n.h.	360°	360°
360°	-	360°	-	-	-
34,400 lb 0 lb	-	360°	-	-	-
23,375 lb 12,350 lb 1,325 lb 0 lb	-	360°	n.v. / n.h.	360°	360°
0 lb	-	360°	±10°	360°	360°

Ballast versions see operation manual · Variantes de lestage, voir le manuel d'instructions  
 n.v. / n.h. = over front / over rear - en avant / en arrière



# Boom/jib combinations

## Configurations de flèche

**T**      **Telescopic boom**  
Flèche télescopique

**K**      **Mechanically adjustable folding jib**  
Pointe pliante réglable mécaniquement

**K**      **Assembly jib**  
Fléchette de montage

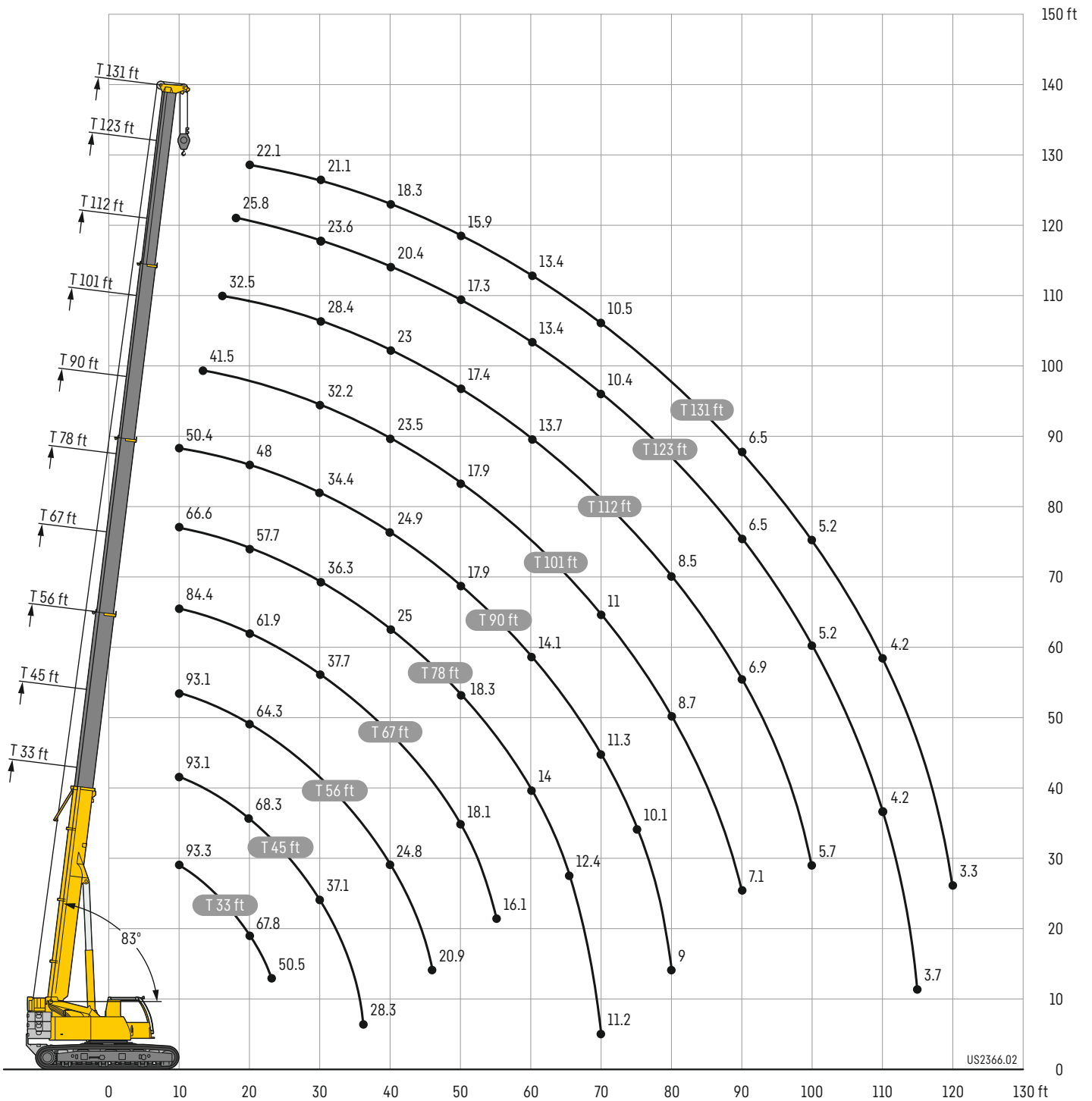


S3627

# Lifting heights

## Hauteurs de levage

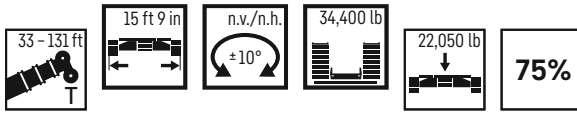
T



# Lifting capacities

## Forces de levage

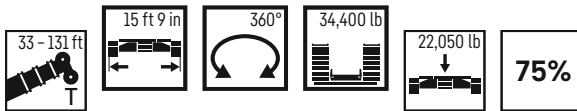
T



	33 ft	45 ft	56 ft	67 ft	78 ft	90 ft	101 ft	112 ft	123 ft	131 ft	
7	*										7
8	132.3	120.8	92.4	91.5	82.6						8
9	125.6	116.7	92.9	92	83.6	65.5					9
10	119.3	112.8	93	92.6	84.1	66.1					10
11	112.8	109.2	93.1	93.1	84.4	66.6	50.4				11
12	99.5	104.8	93.1	91.9	84.2	66.7	51				12
13	86.4	100.5	93.1	90.6	83.7	66.7	51.6				13
14	76.2	96.4	92.1	86.7	82.1	66.7	52.1	41.5			14
15	68	92.4	89.3	82.2	78	66.7	52.5	41.8			15
16	61.2	87.3	84.4	78.5	73.5	66.7	52.7	42.2	32.5		16
17	55.6	82.5	80	75	70	66.7	52.5	42.3	32.7		17
18	50.7	79.1	76.3	71.9	68.2	65.3	51.7	41.9	32.9		18
19	45.9	75.7	74.1	70.2	66.3	63.4	50.5	41.5	33.1	25.8	19
20	41.5	72.3	71.5	68.1	64.3	61.3	49.2	41	33	25.8	20
22	37.8	68.6	68.9	65.1	62.1	58.9	48	40.2	32.9	25.9	22
24	31.8	59.5	60.5	58.5	56.5	53	45.6	38.5	32.1	25.8	24
26	27.2	51.6	52.5	51	47.9	43.2	40.8	36.9	31.3	25.4	26
28			47	47.1	46.4	43.7	40.8	35.3	30.3	24.9	28
30			42	42.7	42.5	40.1	37.7	33.8	29.4	24.3	30
32			37.8	38.5	38.4	37	34.8	32.3	28.4	23.6	32
34			34.3	35	34.9	34.1	32.7	31	27.4	23	34
36			31.4	32	31.9	31.5	30.6	29	26.4	22.3	36
38			28.8	29.5	29.4	28.9	29.2	27.1	25.5	21.7	38
40				27.2	27.1	26.7	27.3	25.3	24.5	21.1	40
45				25.2	25.2	25	25.4	23.8	23.4	20.4	45
50				21.2	21.1	21.8	21.3	21.1	20.3	18.8	50
55				18.1	18.7	18.2	18	17.6	17.4	15.9	55
60				16.4	16.3	15.8	16.1	15.8	15.6	14.9	60
65					14.3	14.2	14.1	14	13.7	13.7	65
70					12.7	12.9	12.5	12.4	12	12.1	70
75					11.4	11.5	11.2	11	10.6	10.7	75
80						10.3	9.7	9.5	9.1	9.1	80
85						9	8.7	8.5	8.2	8.2	85
90							7.9	7.7	7.3	7.3	90
95							7.1	6.9	6.5	6.5	95
100								6.2	5.9	5.9	100
105								5.7	5.3	5.3	105
110									4.7	4.7	110
115									4.2	4.2	115
120									3.8	3.7	120

\* 1,325 lb counterweight slabs - 1,325 lb contrepoids de la partie tournante

t\_201\_00004\_00\_000 / 00011\_00\_000



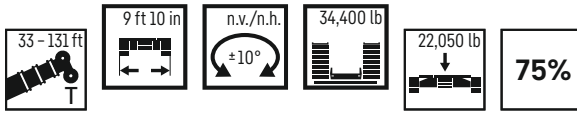
	33 ft	45 ft	56 ft	67 ft	78 ft	90 ft	101 ft	112 ft	123 ft	131 ft	
10	93.3	93.1	93.1	84.4	66.6	50.4					10
11	93.3	93.1	91.9	84.2	66.7	51					11
12	93.3	93.1	90.6	83.7	66.7	51.6					12
13	93.3	92.1	86.7	82.1	66.7	52.1	41.5				13
14	92.2	89.3	82.2	78	66.7	52.5	41.8				14
15	87.3	84.4	78.5	73.5	66.7	52.7	42.2	32.5			15
16	82.5	80	75	70	66.7	52.5	42.3	32.7			16
17	79.1	76.3	71.9	68.2	65.3	51.7	41.9	32.9			17
18	75.7	74.1	70.2	66.3	63.4	50.5	41.5	33.1	25.8		18
19	72.3	71.5	68.1	64.3	61.1	49.2	41	33	25.8		19
20	67.8	68.3	64.3	61.9	57.7	48	40.2	32.9	25.9	22.1	20
22	58.2	59.2	57.3	55.3	52	45.6	38.5	32.1	25.8	22.2	22
24	50.5	51.8	51.4	50	47	43.2	36.9	31.3	25.4	22.2	24
26		46.1	46.8	45.5	42.8	40.4	35.3	30.3	24.9	21.9	26
28		41.1	41.9	41.6	39.3	37	33.8	29.4	24.3	21.5	28
30		37.1	37.7	37.7	36.3	34.4	32.2	28.4	23.6	21.1	30
32		33.7	34.4	34.3	33.5	32.3	30.4	27.4	23	20.7	32
34		30.8	31.4	31.3	30.9	30.4	28.5	26.4	22.3	20.1	34
36		28.3	28.9	28.8	28.4	28.7	26.5	25.5	21.7	19.4	36
38			26.7	26.6	26.3	26.8	24.8	24.3	21.1	18.8	38
40			24.8	24.8	24.8	24.9	23.5	23	20.4	18.3	40
45			20.9	20.7	21.4	20.9	20.7	19.9	18.8	17	45
50				18.1	18.3	17.9	17.9	17.4	17.3	15.9	50
55				16.1	16	15.5	15.8	15.7	15.3	14.9	55
60					14	14.1	13.8	13.7	13.4	13.4	60
65					12.4	12.6	12.4	12.2	11.8	11.8	65
70					11.2	11.3	11	10.8	10.4	10.5	70
75						10.1	9.7	9.5	9.1	9.1	75
80						9	8.7	8.5	8.2	8.2	80
85							7.9	7.7	7.3	7.3	85
90							7.1	6.9	6.5	6.5	90
95								6.2	5.9	5.9	95
100								5.7	5.3	5.3	100
105									4.7	4.7	105
110									4.2	4.2	110
115									3.7	3.7	115
120									3.3	3.3	120

t\_201\_00021\_00\_000

# Lifting capacities

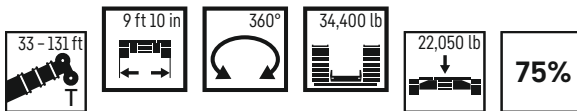
## Forces de levage

T



	33 ft	45 ft	56 ft	67 ft	78 ft	90 ft	101 ft	112 ft	123 ft	131 ft	
7	93.3	92.4	91.5	82.6							7
8	93.3	92.9	92	83.6							8
9	93.3	93	92.6	84.1							9
10	93.3	93.1	93.1	84.4		50.4					10
11	93.3	93.1	91.9	84.2		51					11
12	93.3	93.1	90.6	83.7		51.6					12
13	93.3	92.1	86.7	81.6		52.1	41.5				13
14	92.2	89.3	82.2	77.9		52.5	41.8				14
15	87.3	84.4	78.5	73.5		52.7	42.2	32.5			15
16	82.5	80	75	70		52.5	42.3	32.7			16
17	79.1	76.3	71.9	68.2		51.7	41.9	32.9			17
18	75.7	74.1	70.2	66.3		50.5	41.5	33.1	25.8		18
19	72.3	71.5	68.1	64.3		49.2	41	33	25.8		19
20	68.6	68.9	65.1	62.1	56	48	40.2	32.9	25.9	22.1	20
22	59.5	60.5	58.5	56.5	52.5	45.6	38.5	32.1	25.8	22.2	22
24	51.6	52.6	52.5	51	47.9	43.2	36.9	31.3	25.4	22.2	24
26		47	47.1	46.4	43.7	40.8	35.3	30.3	24.9	21.9	26
28		42	42.7	42.5	40.1	37.7	33.8	29.4	24.3	21.5	28
30		37.8	38.5	38.4	37	34.8	32.3	28.4	23.6	21.1	30
32		34.3	35	34.9	34.1	32.7	31	27.4	23	20.7	32
34		31.4	32	31.9	31.5	30.6	29	26.4	22.3	20.1	34
36		28.8	29.5	29.4	28.9	29.2	27.1	25.5	21.7	19.4	36
38			27.2	27.1	26.7	27.3	25.3	24.5	21.1	18.8	38
40			25.2	25.2	25	25.4	23.8	23.4	20.4	18.3	40
45			21.2	21.1	21.8	21.3	21.1	20.3	18.8	17	45
50				18.1	18.7	18.2	18	17.6	17.4	15.9	50
55				16.4	16.3	15.8	16.1	15.8	15.6	14.9	55
60					14.3	14.2	14.1	14	13.7	13.7	60
65					12.7	12.9	12.5	12.4	12	12.1	65
70					11.4	11.5	11.2	11	10.6	10.7	70
75						10.3	9.7	9.5	9.1	9.1	75
80						9	8.7	8.5	8.2	8.2	80
85							7.9	7.7	7.3	7.3	85
90							7.1	6.9	6.5	6.5	90
95								6.2	5.9	5.9	95
100								5.7	5.3	5.3	100
105									4.7	4.7	105
110									4.2	4.2	110
115									3.8	3.7	115
120										3.3	120

t\_201\_00041\_00\_000



	33 ft	45 ft	56 ft	67 ft	78 ft	90 ft	101 ft	112 ft	123 ft	131 ft	
16	52.5										16
17	48.2	45.8									17
18	44.1	42.8									18
19	40.7	41.2	37.5	34.5							19
20	37.8	39.2	36.7	33.4							20
22	32.8	34.2	32.8	30.6	28.4						22
24	28.8	30.2	30.9	27.6	25.7						24
26		26.9	27.7	26.9	25.2	24	22.4				26
28		24.2	25	25.5	23.9	22.7	20.6				28
30		21.9	22.6	23.3	22.7	21.9	20.6	18.7			30
32		20	20.7	21.3	21.1	20.4	19.3	18.4	17.3		32
34		18.3	18.9	19.5	19.6	18.9	18	17.1	16.1		34
36		16.8	17.4	18	18.1	17.7	16.8	16	15	14.7	36
38			16.1	16.7	16.7	16.6	15.8	15	14.1	13.7	38
40			14.9	15.5	15.5	15.5	14.8	14	13.1	12.9	40
45			12.5	13.1	13.1	13.1	12.7	12	11.2	11	45
50				11.1	11.2	11.2	11	10.4	9.6	9.4	50
55				9.6	9.6	9.7	9.4	9	8.3	8.1	55
60					8.4	8.4	8.2	7.8	7.2	7	60
65					7.3	7.4	7.1	6.8	6.2	6.1	65
70					6.4	6.4	6.1	5.9	5.4	5.3	70
75						5.6	5.3	5.1	4.6	4.5	75
80						5	4.6	4.4	4	3.9	80
85							4	3.8	3.4	3.4	85
90							3.5	3.2	2.8	2.8	90
95								2.8	2.3	2.3	95
100								2.3	1.9	1.9	100

t\_201\_00051\_00\_000



# Lifting capacities

## Forces de levage

T

	33 ft	45 ft	56 ft	67 ft	78 ft	90 ft	101 ft	112 ft	123 ft	131 ft	
7	125.2	92.4	91.5	82.6							7
8	120.9	92.9	92	83.6	65.5						8
9	116.5	93	92.6	84.1	66.1						9
10	111.3	93.1	93.1	84.4	66.6	50.4					10
11	106.5	93.1	91.9	84.2	66.7	51					11
12	101.9	93.1	90.6	83.7	66.7	51.6					12
13	97.1	92.1	86.7	82.1	66.7	52.1	41.5				13
14	91.9	89.3	81.8	77.6	66.7	52.5	41.8				14
15	86.8	84.4	77.1	71.9	66.4	52.7	42.2	32.5			15
16	81.9	78.4	72	68.7	65.7	52.5	42.3	32.7			16
17	76.8	73.4	67.6	64.8	60	51.7	41.9	32.9			17
18	71.1	68	63.4	60.7	56.2	50.4	41.5	33.1	25.8		18
19	64.6	63.4	59.1	56.9	52.8	48.7	41	33	25.8		19
20	59.2	59.3	56.3	53.5	49.8	46.4	40.2	32.9	25.9	22.1	20
22	50.2	52	50.7	47.7	44.7	41.9	38.5	32.1	25.8	22.2	22
24	43.4	45.1	45.5	43	40.2	38.4	36.1	31.3	25.4	22.2	24
26		39.7	40.5	39	36.6	35.7	32.9	30.3	24.9	21.9	26
28		35.4	36.1	35.6	33.6	32.9	30.2	29.1	24.3	21.5	28
30		31.8	32.4	32.4	31.1	30.4	28.6	27.3	23.6	21.1	30
32		28.8	29.5	29.4	29.5	28.2	26.7	25.3	23	20.7	32
34		26.2	26.8	26.8	27.5	26.1	24.9	23.5	22.3	20.1	34
36		24	24.7	24.6	25.3	24.4	23.2	22.4	21.6	19.4	36
38			22.8	23.1	23.3	22.7	22.2	21.3	20.5	18.8	38
40			21.2	21.8	21.6	21.2	21.1	20.2	19.2	18.2	40
45			17.7	18.3	18.1	18.1	18	17.5	16.5	16.2	45
50				15.6	15.4	15.7	15.5	15.2	14.4	14.1	50
55				13.6	13.5	13.6	13.3	13.1	12.5	12.3	55
60					11.8	11.9	11.6	11.4	11	10.8	60
65					10.4	10.2	9.9	9.7	9.2	9.2	65
70					8.9	8.9	8.6	8.4	8	8.1	70
75						7.9	7.6	7.4	7	7.1	75
80						7.1	6.8	6.6	6.2	6.2	80
85							6.1	5.8	5.5	5.5	85
90							5.4	5.2	4.8	4.8	90
95								4.6	4.2	4.2	95
100								4.1	3.7	3.7	100
105									3.2	3.2	105
110									2.8	2.8	110
115									2.4	2.4	115
120										2	120

t\_201\_00012\_00\_000

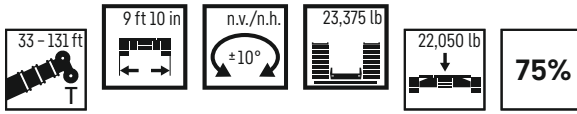
	33 ft	45 ft	56 ft	67 ft	78 ft	90 ft	101 ft	112 ft	123 ft	131 ft	
10	93.3	93.1	93.1	84.4	66.6	50.4					10
11	93.3	93.1	91.9	84.2	66.7	51					11
12	93.3	93.1	90.6	83.7	66.7	51.6					12
13	93.2	92.1	86.7	82.1	66.7	52.1	41.5				13
14	91.9	89.2	81.5	76.2	66.7	52.5	41.8				14
15	86.8	82.8	75.8	70.8	66.3	52.7	42.2	32.5			15
16	81.9	76.5	70.3	67.8	62.5	52.5	42.3	32.7			16
17	75.9	71.7	66.2	63.3	58.6	51.7	41.9	32.9			17
18	69.3	66.4	62	59.3	55	50.3	41.5	33.1	25.8		18
19	63	61.9	58.7	55.7	51.7	47.9	41	33	25.8		19
20	57.7	58	55.6	52.3	48.7	45.4	40.2	32.9	25.9	22.1	20
22	49.1	50.8	49.6	46.7	43.7	41.3	38.5	32.1	25.8	22.2	22
24	42.5	44.1	44.5	42.1	39.4	37.7	35.3	31.3	25.4	22.2	24
26		38.9	39.7	38.2	35.9	35.2	32.2	30.3	24.9	21.9	26
28		34.6	35.4	34.9	33.1	32.2	30.1	28.9	24.3	21.5	28
30		31.2	31.8	31.8	31	29.8	28.3	26.7	23.6	21.1	30
32		28.2	28.9	28.8	29.2	27.6	26.2	24.7	23	20.7	32
34		25.7	26.3	26.3	27	25.6	24.4	23.1	22.3	20.1	34
36			24.2	24.2	24.8	23.9	23	22.4	21.3	19.4	36
38			22.4	22.9	22.8	22.3	21.9	21.2	20	18.8	38
40			20.7	21.4	21.2	20.8	20.6	19.9	18.8	18.2	40
45			17.4	17.9	17.8	18	17.8	17.1	16.1	15.9	45
50				15.3	15.2	15.4	15.2	14.9	14	13.8	50
55				13.3	13.3	13.3	13.1	12.9	12.3	12.1	55
60					11.6	11.7	11.4	11.2	10.8	10.6	60
65					10.2	10.1	9.9	9.7	9.2	9.2	65
70					8.9	8.9	8.6	8.4	8	8.1	70
75						7.9	7.6	7.4	7	7.1	75
80						7.1	6.8	6.6	6.2	6.2	80
85							6.1	5.8	5.5	5.5	85
90							5.4	5.2	4.8	4.8	90
95								4.6	4.2	4.2	95
100								4.1	3.7	3.7	100
105									3.2	3.2	105
110									2.8	2.7	110
115									2.4	2.4	115
120										2	120

t\_201\_00022\_00\_000

# Lifting capacities

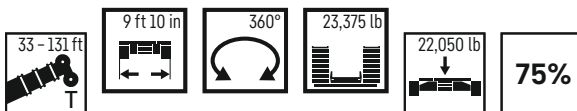
## Forces de levage

T



	33 ft	45 ft	56 ft	67 ft	78 ft	90 ft	101 ft	112 ft	123 ft	131 ft	
7	93.3	92.4	91.5	82.6							7
8	93.3	92.9	92	83.6	65.5						8
9	93.3	93	92.6	83.3	66.1						9
10	93.3	93.1	93.1	81.2	66.3	50.4					10
11	93.3	93.1	91.9	77.5	65.6	51					11
12	93.3	93.1	90.6	74.2	63.2	51.4					12
13	93.2	92.1	86.7	71.1	60.9	51.4	41.5				13
14	91.9	89.3	81.8	70.4	58.8	50.3	41.8				14
15	86.8	84.4	77.1	68.5	56.8	48.8	41.4	32.5			15
16	81.9	78.4	72	66.1	55	47.4	40.8	32.7			16
17	76.8	73.4	67.6	63.7	53.3	46	39.7	32.9			17
18	71.1	68	63.4	60.7	51.7	44.7	38.7	33.1	25.8		18
19	64.6	63.4	59.1	56.9	50.1	43.5	37.7	33	25.8		19
20	59.2	59.3	56.3	53.5	48.7	42.4	36.8	32.9	25.9	22.1	20
22	50.2	52	50.7	47.7	44.7	40.2	35	31.7	25.8	22.2	22
24	43.4	45.1	45.5	43	40.2	38.1	33.4	30.3	25.4	22.2	24
26		39.7	40.5	39	36.6	35.7	31.9	29.1	24.9	21.9	26
28		35.4	36.1	35.6	33.6	32.9	30.2	27.9	24.3	21.5	28
30		31.8	32.4	32.4	31.1	30.4	28.6	26.7	23.6	21.1	30
32		28.8	29.5	29.4	29.5	28.2	26.7	25.3	23	20.7	32
34		26.2	26.8	26.8	27.5	26.1	24.9	23.5	22.3	20.1	34
36		24	24.7	24.6	25.3	24.4	23.2	22.4	21.6	19.4	36
38			22.8	23.1	23.3	22.7	22.2	21.3	20.5	18.8	38
40			21.2	21.8	21.6	21.2	21.1	20.2	19.2	18.2	40
45			17.7	18.3	18.1	18.1	18	17.5	16.5	16.2	45
50				15.6	15.4	15.7	15.5	15.2	14.4	14.1	50
55				13.6	13.5	13.6	13.3	13.1	12.5	12.3	55
60					11.8	11.9	11.6	11.4	11	10.8	60
65					10.4	10.2	9.9	9.7	9.2	9.2	65
70					8.9	8.9	8.6	8.4	8	8.1	70
75						7.9	7.6	7.4	7	7.1	75
80						7.1	6.8	6.6	6.2	6.2	80
85							6.1	5.8	5.5	5.5	85
90							5.4	5.2	4.8	4.8	90
95								4.6	4.2	4.2	95
100								4.1	3.7	3.7	100
105									3.2	3.2	105
110									2.8	2.8	110
115									2.4	2.4	115
120									2	2	120

t\_201\_00042\_00\_000



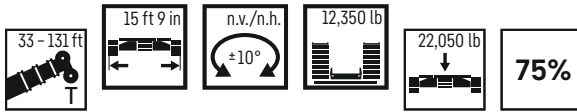
	33 ft	45 ft	56 ft	67 ft	78 ft	90 ft	101 ft	112 ft	123 ft	131 ft	
10	75.9	66.7	60.8	54.7							10
11	68.1	61.7	56.5	51.6	46.3						11
12	61.4	57.6	52	47.3	43.2						12
13	55.8	52.7	49.3	45.6	40						13
14	51.1	48.4	45.8	42.6	39.3	35.9					14
15	47	44.8	42.6	40.6	37.5	34.3					15
16	43.1	41.6	39.7	38	35.6	33	29.8				16
17	39.5	38.8	37.1	35.7	33.7	31.1	29.9	27.1			17
18	36	36.3	34.9	33.7	31.9	29.3	28.3	25.6			18
19	33.2	34	32.8	31.8	30.2	28.7	27	25.5	23.8		19
20	30.7	32	31	30.1	28.6	27.3	25.7	24.2	22.6	21.9	20
22	26.5	27.9	27.7	27.1	25.9	24.7	23.3	22	20.6	20	22
24	23.2	24.6	25	24.5	23.5	22.5	21.2	20.1	18.8	18.2	24
26		21.8	22.6	22.4	21.5	20.6	19.4	18.4	17.2	16.7	26
28		19.5	20.2	20.5	19.7	18.9	17.9	16.9	15.8	15.4	28
30		17.6	18.3	18.9	18.2	17.5	16.5	15.6	14.6	14.2	30
32		15.9	16.6	17.2	16.8	16.2	15.3	14.4	13.4	13.1	32
34		14.5	15.1	15.8	15.6	15	14.2	13.4	12.4	12.2	34
36		13.2	13.9	14.5	14.5	14	13.2	12.4	11.5	11.3	36
38			12.8	13.4	13.4	13	12.3	11.6	10.7	10.5	38
40			11.8	12.4	12.4	12.2	11.5	10.8	10	9.7	40
45			9.7	10.3	10.3	10.3	9.7	9.1	8.3	8.2	45
50				8.7	8.7	8.6	8.3	7.7	7	6.8	50
55				7.4	7.4	7.4	7.1	6.6	5.9	5.7	55
60					6.3	6.3	6.1	5.6	4.9	4.8	60
65					5.4	5.4	5.1	4.8	4.1	4	65
70					4.6	4.6	4.3	4	3.4	3.3	70
75						3.9	3.6	3.4	2.8	2.7	75
80						3.4	3	2.8	2.3	2.2	80
85							2.5	2.3	1.8	1.7	85
90							2.1	1.8			90

t\_201\_00052\_00\_000

# Lifting capacities

## Forces de levage

T



	33 ft	45 ft	56 ft	67 ft	78 ft	90 ft	101 ft	112 ft	123 ft	131 ft	
7	126.5	92.4	91.5	82.6							7
8	124	92.9	92	83.6	65.5						8
9	118.3	93	92.6	84.1	66.1						9
10	112.8	93.1	93.1	84.4	66.6	50.4					10
11	107.2	93.1	91.6	83.5	66.7	51					11
12	101.1	90.9	85.5	77.2	66.7	51.6					12
13	94.6	85.8	77	70.1	64.8	52.1	41.5				13
14	86.5	77	70.1	66.7	61.4	52.5	41.8				14
15	78.1	70.4	65.8	61.9	56.7	52	42.2	32.5			15
16	71.1	65.5	62.1	57.3	52.7	48.7	42.3	32.7			16
17	64.8	61.2	57.4	53.3	49.2	46.2	41.9	32.9			17
18	58.5	56.6	53.5	49.9	46	43.5	40.3	33.1	25.8		18
19	53.1	52.7	49.9	46.7	43.5	41.5	37.9	33	25.8		19
20	48.5	49.3	46.9	43.8	40.9	39.4	36	32.8	25.9	22.1	20
22	41	42.7	41.5	39	37.7	35.3	33.2	31.1	25.8	22.2	22
24	35.3	37	37.1	35	34.1	31.9	30.1	28.2	25.4	22.2	24
26		32.4	33.2	31.7	31.1	29.1	28.1	26.7	24.9	21.9	26
28		28.8	29.5	29.5	28.4	26.6	25.9	24.8	23.3	21.5	28
30		25.8	26.6	27.3	26.1	24.9	24.1	22.9	21.5	20.7	30
32		23.3	24.1	24.7	24.1	23.5	22.3	21.2	19.9	19.5	32
34		21.1	21.9	22.6	22.3	21.8	20.7	19.7	18.5	18.1	34
36		19.3	20	20.7	20.5	20.3	19.3	18.3	17.2	16.8	36
38			18.4	19	19.1	19	18	17.1	16.1	15.7	38
40			17	17.6	17.6	17.7	16.9	16	15	14.7	40
45			14.1	14.7	14.7	14.8	14.4	13.7	12.7	12.5	45
50				12.4	12.5	12.5	12.3	11.8	10.9	10.7	50
55				10.4	10.5	10.6	10.2	10	9.3	9.3	55
60					8.7	8.8	8.5	8.3	7.9	7.9	60
65					7.6	7.6	7.4	7.1	6.8	6.8	65
70					6.7	6.7	6.4	6.2	5.8	5.8	70
75						5.8	5.6	5.4	5	5	75
80						5.2	4.9	4.7	4.3	4.3	80
85							4.3	4	3.7	3.7	85
90							3.8	3.5	3.1	3.1	90
95								3	2.6	2.6	95
100								2.6	2.1	2.1	100
105									1.7	1.7	105

t\_201\_00013\_00\_000



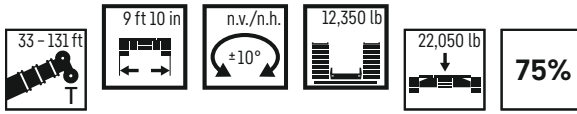
	33 ft	45 ft	56 ft	67 ft	78 ft	90 ft	101 ft	112 ft	123 ft	131 ft	
10	93.3	93.1	93.1	84.4	66.6	50.4					10
11	93.3	93.1	91.4	83.2	66.7	51					11
12	93.3	89.5	83.1	75.1	66.7	51.6					12
13	92.2	83.3	74.9	70	64	52.1	41.5				13
14	84	74.9	69.5	65.4	59.9	51.9	41.8				14
15	76	69.1	64.5	60.4	55.3	50.8	42.2	32.5			15
16	69.2	63.8	60.6	55.9	51.4	47.7	42.1	32.7			16
17	63	59.7	56	52	48	45.2	41.2	32.9			17
18	57	55.2	52.2	48.7	45.3	43.2	39.4	33.1	25.8		18
19	51.7	51.5	48.7	45.6	42.5	40.7	37	33	25.8		19
20	47.3	48.1	45.7	42.8	40.3	38.5	35.6	32.8	25.9	22.1	20
22	40	41.7	40.5	38.1	37.1	34.5	32.5	30.4	25.8	22.2	22
24	34.5	36.1	36.3	34.2	33.4	31.2	29.5	27.9	25.4	22.2	24
26		31.7	32.5	31.3	30.4	28.4	27.6	26.4	24.5	21.9	26
28		28.2	28.9	29.3	27.8	26	25.4	24.2	22.8	21.5	28
30		25.2	26	26.7	25.6	24.6	23.6	22.4	21	20.4	30
32		22.8	23.6	24.2	23.6	23	21.8	20.7	19.5	19	32
34		20.7	21.4	22.1	21.8	21.3	20.3	19.3	18.1	17.7	34
36		18.9	19.6	20.2	20.1	19.9	18.9	17.9	16.8	16.4	36
38			18	18.6	18.7	18.6	17.6	16.7	15.7	15.3	38
40			16.6	17.3	17.3	17.3	16.5	15.6	14.6	14.3	40
45			13.8	14.4	14.4	14.5	14.1	13.3	12.4	12.2	45
50				12.2	12.2	12.2	12	11.5	10.7	10.5	50
55				10.3	10.3	10.4	10.1	9.8	9.2	9	55
60					8.7	8.8	8.5	8.3	7.9	7.8	60
65					7.6	7.6	7.4	7.1	6.8	6.7	65
70					6.7	6.7	6.4	6.2	5.8	5.8	70
75						5.8	5.6	5.4	5	5	75
80						5.2	4.9	4.7	4.3	4.3	80
85							4.3	4	3.7	3.7	85
90							3.8	3.5	3.1	3.1	90
95								3	2.6	2.6	95
100								2.6	2.1	2.1	100
105									1.7	1.7	105

t\_201\_00023\_00\_000

# Lifting capacities

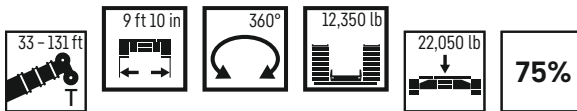
## Forces de levage

T



	33 ft	45 ft	56 ft	67 ft	78 ft	90 ft	101 ft	112 ft	123 ft	131 ft	
7	93.3	92.4	91.5	79.8							7
8	93.3	92.9	92	76.4	63.4						8
9	93.3	93	92.6	72.6	61						9
10	93.3	93.1	89.1	69.2	58.6	49.6					10
11	93.3	93.1	84.3	68.8	56.3	48.1					11
12	93.3	90.9	80.1	66.1	54.2	46.5					12
13	92.6	85.8	75.7	63.4	52.2	45	38.7				13
14	86.5	77	70.1	60.9	50.4	43.6	37.5				14
15	78.1	70.4	65.8	58.6	48.7	42.3	36.5	31.6			15
16	71.1	65.5	62.1	56.4	47.1	41	35.5	31.3			16
17	64.8	61.2	57.4	53.3	45.6	39.8	34.6	30.9			17
18	58.5	56.6	53.5	49.9	44.2	38.7	33.9	30.4	25.8		18
19	53.1	52.7	49.9	46.7	42.7	37.6	33.1	29.7	25.6		19
20	48.5	49.3	46.9	43.8	40.8	36.6	32.4	29	25.4	22.1	20
22	41	42.7	41.5	39	37.7	34.8	30.9	27.7	24.5	22.2	22
24	35.3	37	37.1	35	34.1	31.9	29.5	26.5	23.4	21.8	24
26		32.4	33.2	31.7	31.1	29.1	28.1	25.4	22.5	21	26
28		28.8	29.5	29.5	28.4	26.6	25.9	24.3	21.6	20.2	28
30		25.8	26.6	27.3	26.1	24.9	24.1	22.9	20.7	19.4	30
32		23.3	24.1	24.7	24.1	23.5	22.3	21.2	19.7	18.7	32
34		21.1	21.9	22.6	22.3	21.8	20.7	19.7	18.5	17.9	34
36		19.3	20	20.7	20.5	20.3	19.3	18.3	17.2	16.8	36
38			18.4	19	19.1	19	18	17.1	16.1	15.7	38
40			17	17.6	17.6	17.7	16.9	16	15	14.7	40
45			14.1	14.7	14.7	14.8	14.4	13.7	12.7	12.5	45
50				12.4	12.5	12.5	12.3	11.8	10.9	10.7	50
55				10.4	10.5	10.6	10.2	10	9.3	9.3	55
60					8.7	8.8	8.5	8.3	7.9	7.9	60
65					7.6	7.6	7.4	7.1	6.8	6.8	65
70					6.7	6.7	6.4	6.2	5.8	5.8	70
75						5.8	5.6	5.4	5	5	75
80						5.2	4.9	4.7	4.3	4.3	80
85							4.3	4	3.7	3.7	85
90							3.8	3.5	3.1	3.1	90
95								3	2.6	2.6	95
100								2.6	2.1	2.1	100
105									1.7	1.7	105

t\_201\_00043\_00\_000



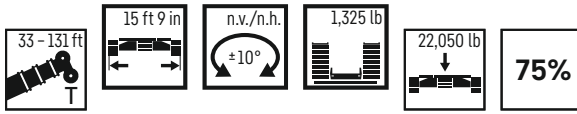
	33 ft	45 ft	56 ft	67 ft	78 ft	90 ft	101 ft	112 ft	123 ft	131 ft	
10	60	55.6	51.2	47.8	43.7	39.6					10
11	53.4	50	46.4	43.6	40.4	37.6					11
12	48	45.4	42.4	40	37.3	34.8					12
13	43.5	41.3	38.9	37	34.6	32.4	30.1				13
14	39.7	37.9	36	34.3	32.2	30.3	28.1				14
15	36.4	35	33.4	31.9	30	28.3	26.4	24.6			15
16	33.5	32.4	31	29.8	28.1	26.6	24.8	23.1			16
17	30.7	30.1	28.9	28	26.4	25	23.4	21.8			17
18	28	28	27.1	26.3	24.9	23.6	22.1	20.6	19.1		18
19	25.7	26.2	25.4	24.8	23.4	22.3	20.8	19.5	18.1		19
20	23.7	24.6	23.9	23.4	22.2	21.1	19.8	18.5	17.1	16.6	20
22	20.3	21.7	21.3	20.9	20	19	17.8	16.7	15.4	15	22
24	17.6	19	19.1	18.8	18	17.2	16.1	15.1	14	13.6	24
26		16.7	17.2	17.1	16.4	15.7	14.7	13.7	12.7	12.3	26
28		14.8	15.5	15.6	14.9	14.3	13.4	12.5	11.5	11.2	28
30		13.3	13.9	14.2	13.7	13.1	12.3	11.5	10.5	10.2	30
32		11.9	12.6	13	12.5	12.1	11.2	10.5	9.6	9.4	32
34		10.8	11.4	12	11.5	11.1	10.4	9.7	8.8	8.6	34
36		9.7	10.4	11	10.6	10.2	9.5	8.9	8.1	7.9	36
38			9.5	10.1	9.8	9.5	8.8	8.2	7.4	7.2	38
40			8.7	9.3	9.1	8.8	8.1	7.5	6.8	6.6	40
45			7	7.6	7.5	7.3	6.7	6.2	5.5	5.3	45
50				6.2	6.2	6.1	5.5	5	4.4	4.3	50
55				5.1	5.1	5.1	4.6	4.1	3.5	3.4	55
60					4.2	4.2	3.8	3.3	2.7	2.6	60
65					3.4	3.4	3.1	2.6	2	1.9	65
70					2.8	2.8	2.5	2			70
75						2.2	1.9				75
80						1.8					80

t\_201\_00053\_00\_000

# Lifting capacities

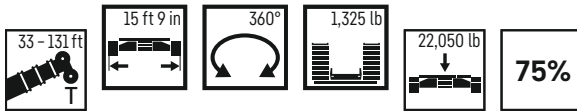
## Forces de levage

T



	33 ft	45 ft	56 ft	67 ft	78 ft	90 ft	101 ft	112 ft	123 ft	131 ft	
7	126.5	92.4	91.5	82.6							7
8	125.5	92.9	92	83.6	65.5						8
9	119.3	93	92.6	82.1	66.1						9
10	112.8	91.7	86	76.3	65.8	50.4					10
11	99.5	84.8	75.6	68.6	63.6	51					11
12	86.4	75.9	69.4	64	57.7	50.7					12
13	76.2	69.3	63.9	58.1	52.9	48.6	41.2				13
14	68	62.7	58.2	53.1	48.7	45.9	41				14
15	61.2	57.1	53.3	48.8	46.3	42.4	38.4	32.5			15
16	55.6	52.3	49	45.1	43	39.5	36.7	32.7			16
17	50.7	48	45.2	41.8	40.1	36.9	34.6	31.3			17
18	45.9	44.3	42	39.7	37.5	34.6	33.1	30.6	25.8		18
19	41.5	41.2	39	37.5	35.2	32.9	31.4	29.2	25.7		19
20	37.8	38.4	36.6	35.4	33.1	31.5	29.7	27.8	25.5	22.1	20
22	31.8	33.5	32.4	31.4	29.6	28.4	26.6	25	23.3	22.1	22
24	27.2	28.9	28.9	28.2	26.8	25.6	24.1	22.7	21.1	20.4	24
26		25.2	25.9	25.4	24.3	23.3	21.9	20.6	19.2	18.7	26
28		22.2	23.1	23.1	22.2	21.2	20	18.8	17.6	17.1	28
30		19.8	20.6	21.1	20.3	19.5	18.4	17.3	16.1	15.7	30
32		17.7	18.6	19.2	18.7	17.9	16.9	15.9	14.8	14.4	32
34		15.8	16.6	17.4	17.2	16.5	15.6	14.7	13.6	13.3	34
36		14.3	15.1	15.8	15.9	15.3	14.4	13.6	12.6	12.3	36
38			13.8	14.4	14.5	14.3	13.4	12.6	11.7	11.4	38
40			12.6	13.3	13.3	13.3	12.5	11.7	10.8	10.6	40
45			9.8	10.8	10.7	10.8	10.4	9.8	9	8.8	45
50				8.6	8.6	8.6	8.4	8.1	7.5	7.3	50
55				7.2	7.2	7.3	7	6.8	6.3	6.2	55
60				6.1	6.1	6.1	5.9	5.6	5.3	5.1	60
65				5.2	5.2	5.2	5	4.7	4.4	4.3	65
70				4.5	4.5	4.4	4.2	4	3.6	3.6	70
75						3.8	3.5	3.3	2.9	2.9	75
80						3.2	3	2.7	2.3	2.3	80
85							2.5	2.2	1.8	1.8	85
90							2	1.8			90

t\_201\_00014\_00\_000



	33 ft	45 ft	56 ft	67 ft	78 ft	90 ft	101 ft	112 ft	123 ft	131 ft	
10	93.3	91.3	83.2	73.8	65.3	50.4					10
11	93.2	82.5	73.2	68.4	61.7	51					11
12	83.5	73.5	68.8	62.2	56.1	50.5					12
13	73.7	67.8	62.1	56.5	51.6	47.6	40.7				13
14	65.9	60.9	56.6	51.7	47.8	44.7	39.8				14
15	59.4	55.5	51.8	47.5	45.1	41.3	37.8	32.5			15
16	53.9	50.8	47.6	43.9	41.9	38.5	35.7	32.7			16
17	49.2	46.7	44	41.4	39.1	36	34	30.9			17
18	44.6	43.1	40.9	39.3	36.6	33.8	32.3	30.4	25.8		18
19	40.3	40.1	38.2	36.8	34.3	32.5	30.6	28.7	25.4		19
20	36.8	37.4	35.8	34.5	32.2	30.9	29	27.1	25	22.1	20
22	30.9	32.6	31.6	30.7	28.8	27.7	26	24.4	22.7	22	22
24	26.5	28.1	28.2	27.5	26.2	25	23.5	22.1	20.6	20	24
26		24.6	25.3	24.8	23.7	22.7	21.3	20.1	18.7	18.2	26
28		21.7	22.5	22.6	21.6	20.7	19.5	18.4	17.1	16.6	28
30		19.3	20.1	20.6	19.8	19	17.9	16.8	15.7	15.3	30
32		17.3	18.1	18.8	18.2	17.5	16.5	15.5	14.4	14	32
34		15.6	16.3	17.1	16.8	16.1	15.2	14.3	13.3	12.9	34
36		14.2	14.9	15.6	15.5	15	14.1	13.2	12.2	12	36
38			13.6	14.3	14.3	13.9	13.1	12.3	11.4	11.1	38
40			12.5	13.1	13.2	12.9	12.1	11.4	10.5	10.2	40
45			9.8	10.8	10.7	10.7	10.2	9.5	8.7	8.5	45
50				8.6	8.6	8.6	8.4	8	7.3	7.1	50
55				7.2	7.2	7.3	7	6.8	6.1	5.9	55
60				6.1	6.1	6.1	5.9	5.6	5.1	4.9	60
65				5.2	5.2	5.2	5	4.7	4.2	4.1	65
70				4.5	4.5	4.4	4.2	4	3.5	3.4	70
75						3.8	3.5	3.3	2.8	2.7	75
80						3.2	3	2.7	2.3	2.2	80
85							2.5	2.2	1.8	1.7	85
90							2	1.8			90

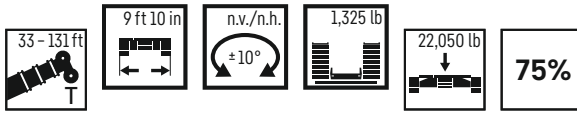
t\_201\_00024\_00\_000



# Lifting capacities

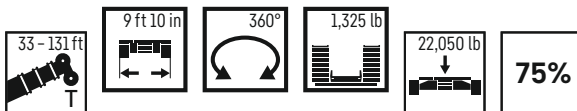
## Forces de levage

T



	33 ft	45 ft	56 ft	67 ft	78 ft	90 ft	101 ft	112 ft	123 ft	131 ft	
7	93.3	92.4	88.8	68.1							7
8	93.3	92.9	83.7	66.5	54.3						8
9	93.3	93	78.6	63.2	52.1						9
10	93.3	91.7	74	60.2	50	41.2					10
11	93.2	84.8	70.2	57.5	48	40.9					11
12	86.4	75.9	69.4	55	46.2	39.5					12
13	76.2	69.3	63.9	52.7	44.6	38.3	32.8				13
14	68	62.7	58.2	50.6	43	37.1	31.8				14
15	61.2	57.1	53.3	48.3	41.5	35.9	30.9	26.9			15
16	55.6	52.3	49	45.1	40.2	34.8	30	26.2			16
17	50.7	48	45.2	41.8	38.9	33.8	29.2	25.5			17
18	45.9	44.3	42	39.7	37.2	32.8	28.5	24.8	21.6		18
19	41.5	41.2	39	37.5	35.2	31.9	27.7	24.2	21.1		19
20	37.8	38.4	36.6	35.4	33.1	31	27	23.6	20.6	19.1	20
22	31.8	33.5	32.4	31.4	29.6	28.4	25.7	22.5	19.7	18.3	22
24	27.2	28.9	28.9	28.2	26.8	25.6	24	21.5	18.8	17.5	24
26		25.2	25.9	25.4	24.3	23.3	21.9	20.4	18	16.8	26
28		22.2	23.1	23.1	22.2	21.2	20	18.8	17.2	16.1	28
30		19.8	20.6	21.1	20.3	19.5	18.4	17.3	16.1	15.4	30
32		17.7	18.6	19.2	18.7	17.9	16.9	15.9	14.8	14.4	32
34		15.8	16.6	17.4	17.2	16.5	15.6	14.7	13.6	13.3	34
36		14.3	15.1	15.8	15.9	15.3	14.4	13.6	12.6	12.3	36
38			13.8	14.4	14.5	14.3	13.4	12.6	11.7	11.4	38
40			12.6	13.3	13.3	13.3	12.5	11.7	10.8	10.6	40
45			9.8	10.8	10.7	10.8	10.4	9.8	9	8.8	45
50				8.6	8.6	8.6	8.4	8.1	7.5	7.3	50
55				7.2	7.2	7.3	7	6.8	6.3	6.2	55
60				6.1	6.1	6.1	5.9	5.6	5.3	5.1	60
65				5.2	5.2	5.2	5	4.7	4.4	4.3	65
70				4.5	4.5	4.4	4.2	4	3.6	3.6	70
75						3.8	3.5	3.3	2.9	2.9	75
80						3.2	3	2.7	2.3	2.3	80
85							2.5	2.2	1.8	1.8	85
90							2	1.8			90

t\_201\_00044\_00\_000



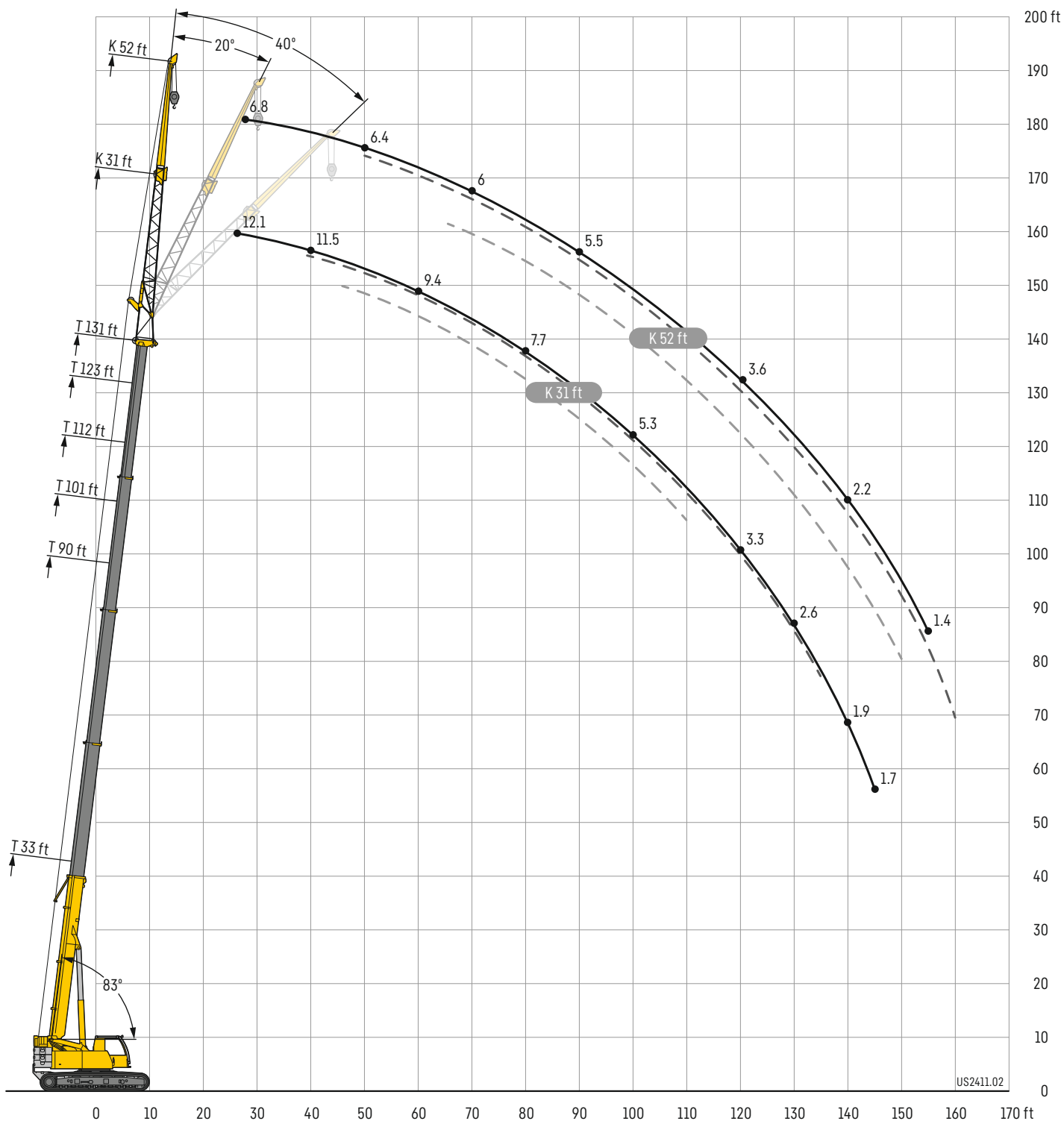
	33 ft	45 ft	56 ft	67 ft	78 ft	90 ft	101 ft	112 ft	123 ft	131 ft	
10	43.8	40.9	37.9	35.5	32.6	29					10
11	38.8	36.6	34.2	32.3	29.8	27.7					11
12	34.6	33.1	31.1	29.5	27.4	25.5					12
13	31.2	30	28.4	27.1	25.3	23.6	21.8				13
14	28.2	27.3	26.1	25.1	23.5	22	20.2				14
15	25.7	25.1	24.1	23.3	21.8	20.5	18.9	17.5			15
16	23.5	23.1	22.3	21.6	20.3	19.1	17.7	16.3			16
17	21.6	21.4	20.7	20.2	19	17.9	16.6	15.3			17
18	19.9	19.8	19.3	18.9	17.8	16.8	15.6	14.4	13.1		18
19	18.2	18.4	18	17.7	16.7	15.8	14.6	13.5	12.3		19
20	16.6	17.1	16.8	16.6	15.7	14.9	13.8	12.7	11.6	11.1	20
22	14	15	14.8	14.7	14	13.3	12.3	11.3	10.3	9.9	22
24	11.9	13.2	13.1	13.1	12.5	11.9	11	10.1	9.1	8.8	24
26		11.6	11.7	11.8	11.2	10.7	9.8	9.1	8.1	7.9	26
28		10.2	10.4	10.6	10.1	9.6	8.9	8.1	7.3	7	28
30		8.9	9.3	9.5	9.1	8.7	8	7.3	6.5	6.3	30
32		7.9	8.4	8.6	8.3	7.9	7.2	6.6	5.8	5.6	32
34		6.9	7.5	7.8	7.5	7.2	6.5	5.9	5.2	5	34
36		6.1	6.8	7.1	6.8	6.5	5.9	5.3	4.6	4.4	36
38			6	6.5	6.2	5.9	5.3	4.8	4.1	3.9	38
40			5.4	5.9	5.6	5.4	4.8	4.3	3.6	3.5	40
45			4	4.7	4.4	4.2	3.7	3.2	2.5	2.3	45
50				3.6	3.5	3.3	2.8	2.2			50
55				2.7	2.7	2.5	1.9				55
60				1.9	1.9	1.7					60

t\_201\_00054\_00\_000

# Lifting heights

## Hauteurs de levage

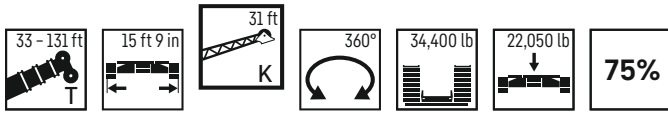
TK



# Lifting capacities

## Forces de levage

TK



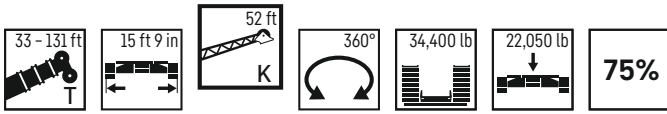
	33 ft			90 ft			101 ft			112 ft			123 ft			131 ft				
	K 31 ft																			
	0°	20°	40°	0°	20°	40°	0°	20°	40°	0°	20°	40°	0°	20°	40°	0°	20°	40°		
9	17.6																		9	
10	17.4																		10	
11	17.1																		11	
12	16.7																		12	
13	16.3																		13	
14	15.9			18.5															14	
15	15.5			18.5															15	
16	15.1	14.8		18.5															16	
17	14.8	14.7		18.5															17	
18	14.4	14.5		18.5			18.5												18	
20	13.7	14.2		18.4			18.5												20	
22	13	13.7	11.5	18.1			18.4			16.1									22	
24	12.3	13.2	11.5	17.7			18.2			16									24	
26	11.6	12.7	11.4	17.3	14.8		17.8			15.9			13.4				12.1		26	
28	10.9	12.1	11.3	16.9	14.8		17.5	14.8		15.8			13.4				12.1		28	
30	10.2	11.6	11.1	16.5	14.8		17.2	14.8		15.7			13.3				12		30	
32	9.5	11	10.9	16.1	14.6	11.5	16.8	14.7		15.5	13.8		13.3				12		32	
34	8.9	10.4	10.5	15.7	14.5	11.5	16.4	14.5		15.4	13.6		13.2				11.9		34	
36	8.3	9.7	10	15.3	14.3	11.5	16.1	14.2		15.2	13.4		13.1				11.8		36	
38	7.7	9.1	9.5	14.9	14	11.5	15.7	14	11.5	15.1	13.2		13				11.7	11.2	38	
40	7.2	8.5	9	14.5	13.8	11.5	15.3	13.7	11.5	14.9	13		12.8	11.9			11.5	11.1	40	
45	6.1	7.4	7.7	13.5	13.2	11.3	14.4	13.2	11.5	14.5	12.6	11.2	12.3	11.6	10.7		11.2	10.8	45	
50				12.6	12.5	11.1	13.5	12.7	11.2	13.9	12.2	10.9	11.7	11.1	10.4		10.7	10.1	9.7	50
55				11.7	11.8	10.8	12.6	12.2	10.9	13.3	11.8	10.6	11.2	10.6	10		10.1	9.5	9.1	55
60				10.7	11	10.4	11.8	11.7	10.6	12.6	11.5	10.4	10.7	9.9	9.6		9.4	8.9	8.7	60
65				9.8	10.3	9.8	11	11.1	10.3	11.6	11.1	10.1	10.1	9.2	9		8.9	8.5	8.4	65
70				9	9.4	9.2	10.1	10.4	9.8	10.3	10.6	9.8	9.5	8.8	8.6		8.5	8.2	8	70
75				8.2	8.7	8.6	9.3	9.7	9.3	9.1	9.7	9.4	8.9	8.4	8.3		8.1	7.8	7.7	75
80				7.4	8.1	8	8.5	8.9	8.8	8.2	8.6	8.8	8.2	8	8		7.7	7.5	7.4	80
85				6.8	7.6	7.4	7.7	8	8.2	7.8	7.7	7.9	7.4	7.7	7.7		7.2	7.2	7.2	85
90				6.2	7		7.1	7.3	7.5	7.1	7.2	7.4	6.7	7	7.2		6.5	6.8	6.9	90
95				5.7	6.4		6.6	6.7		6.4	6.7	6.8	6	6.3	6.6		5.9	6.3	6.4	95
100				5.1			6.1	6.3		5.8	6.1		5.4	5.7	5.9		5.3	5.6	5.9	100
105				4.5			5.5	5.7		5.3	5.5		4.8	5.1	5.3		4.7	5	5.3	105
110							5	5.2		4.8	5		4.3	4.6			4.2	4.5	4.7	110
115										4.3	4.5		3.8	4.1			3.7	4		115
120										3.9			3.4	3.6			3.3	3.6		120
125										3.5			3	3.2			2.9	3.1		125
130													2.6	2.8			2.6	2.8		130
135													2.3				2.2	2.4		135
140																	1.9			140
145																	1.7			145

t\_201\_00141\_00\_000 / 00161\_00\_000 / 00181\_00\_000

# Lifting capacities

## Forces de levage

TK



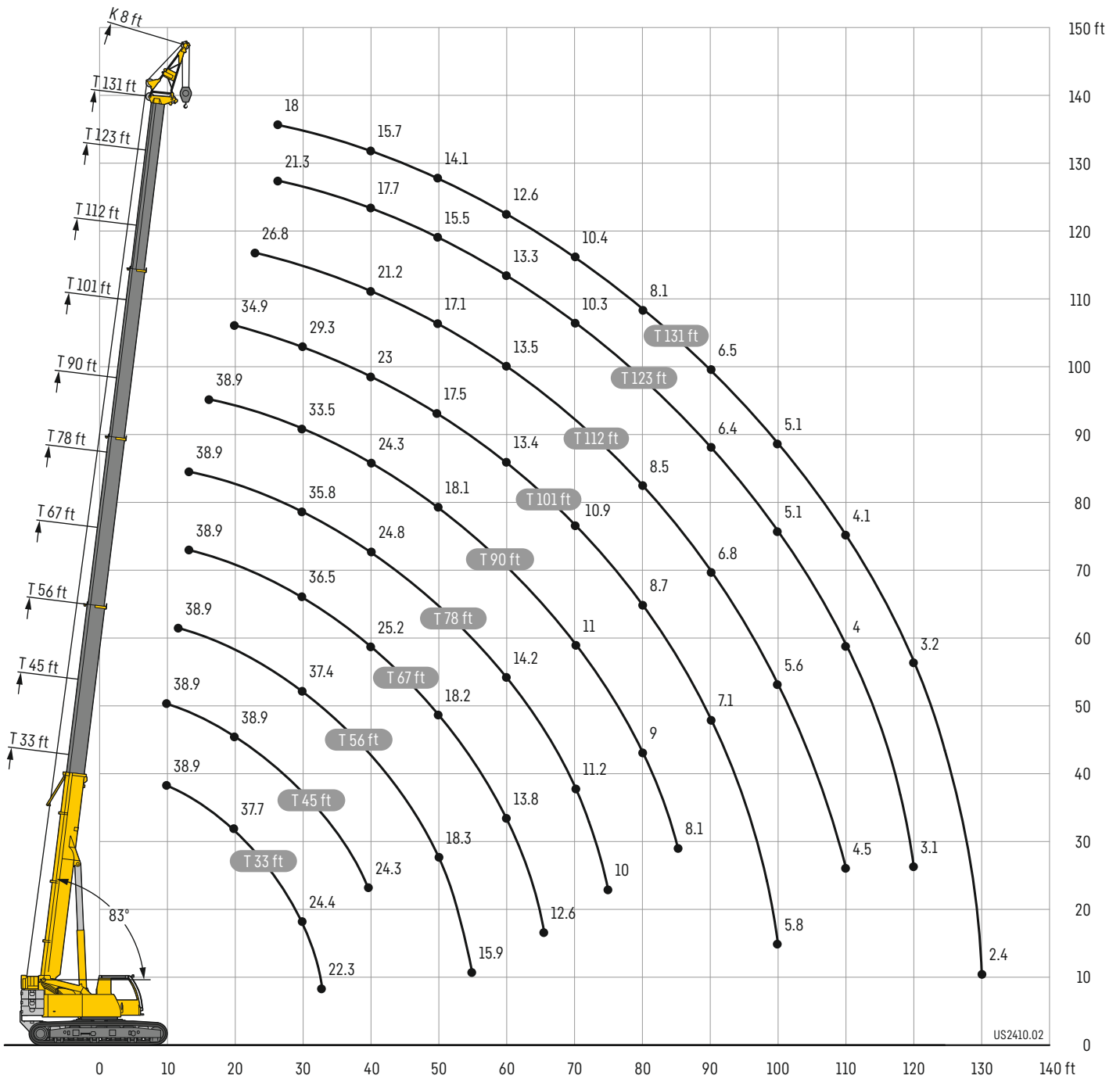
	33 ft			90 ft			101 ft			112 ft			123 ft			131 ft			
	K 52 ft																		
	0°	20°	40°	0°	20°	40°	0°	20°	40°	0°	20°	40°	0°	20°	40°	0°	20°	40°	
13	8.9																		13
14	8.8																		14
15	8.8																		15
16	8.7																		16
17	8.5																		17
18	8.4			9															18
20	8.2			9															20
22	7.9			9			9												22
24	7.7			9			9												24
26	7.4	7.1		9			9			8.3									26
28	7.2	7		8.9			9			8.3			7.3			6.8			28
30	7	6.8		8.8			8.9			8.2			7.3			6.8			30
32	6.9	6.7		8.6			8.8			8.1			7.2			6.7			32
34	6.7	6.5		8.5			8.7			8.1			7.2			6.7			34
36	6.5	6.4		8.3	7.2		8.6			8			7.2			6.7			36
38	6.3	6.2	4.9	8.2	7.1		8.5	7.1		7.9			7.1			6.6			38
40	6.1	6.1	4.8	8.1	7		8.3	7		7.9			7.1			6.6			40
45	5.7	5.8	4.7	7.7	6.7		8	6.8		7.7	6.5		6.9			6.5			45
50	5.2	5.5	4.6	7.3	6.5	4.9	7.6	6.6		7.4	6.4		6.8	6		6.4	5.7		50
55	4.7	5.1	4.5	7	6.3	4.8	7.3	6.4	4.8	7.2	6.2	4.8	6.7	5.9		6.3	5.7		55
60	4.2	4.8	4.4	6.8	6.1	4.7	7	6.2	4.8	7	6	4.8	6.6	5.8		6.2	5.6		60
65	3.7	4.5	4.2	6.5	5.9	4.7	6.8	6	4.7	6.8	5.9	4.8	6.4	5.6	4.8	6.1	5.5	4.8	65
70				6.2	5.7	4.6	6.6	5.8	4.7	6.6	5.7	4.7	6.3	5.5	4.7	6	5.4	4.8	70
75				5.9	5.6	4.6	6.3	5.6	4.6	6.4	5.6	4.7	6.1	5.4	4.7	5.9	5.3	4.7	75
80				5.7	5.4	4.5	6	5.5	4.6	6.3	5.4	4.6	6	5.3	4.6	5.7	5.2	4.7	80
85				5.4	5.3	4.5	5.8	5.4	4.5	6.1	5.3	4.6	5.8	5.2	4.6	5.6	5.1	4.6	85
90				5.1	5.1	4.4	5.5	5.3	4.5	5.9	5.2	4.5	5.7	5.1	4.6	5.5	5	4.6	90
95				4.8	4.9	4.3	5.3	5.1	4.4	5.6	5.1	4.5	5.5	5	4.5	5.4	4.9	4.6	95
100				4.5	4.8	4.3	5	5	4.4	5.4	5	4.4	5.3	5	4.5	5.2	4.9	4.5	100
105				4.2	4.7	4.2	4.7	4.8	4.3	5.1	5	4.4	5.1	4.9	4.5	5	4.8	4.5	105
110				3.9	4.7	4.1	4.4	4.7	4.2	4.9	4.9	4.3	4.6	4.8	4.4	4.5	4.7	4.5	110
115				3.6	4.6		4.1	4.5	4.1	4.5	4.7	4.3	4.1	4.6	4.3	4	4.5	4.4	115
120				3.3	4.4		3.8	4.3	4	4.2	4.5	4.2	3.7	4.2	4.2	3.6	4.1	4.3	120
125				3.1	3.9		3.6	4.2	3.9	3.8	4.1	4.1	3.3	3.7	4	3.2	3.7	4	125
130							3.3	3.9		3.4	3.7	3.8	2.9	3.3	3.6	2.9	3.3	3.5	130
135							3.1			3.1	3.3		2.6	2.9	3.1	2.5	2.9	3.1	135
140										2.8	3		2.3	2.6	2.7	2.2	2.5	2.7	140
145										2.5	2.7		2	2.3	2.4	1.9	2.2	2.4	145
150													1.7	2		1.7	1.9	2	150
155													1.5	1.7		1.4	1.6		155
160																1.4			160

t\_201\_00201\_00\_000 / 00221\_00\_000 / 00241\_00\_000

# Lifting heights

## Hauteurs de levage

TK

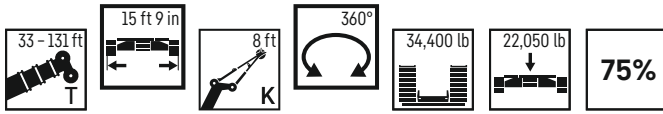




# Lifting capacities

## Forces de levage

TK



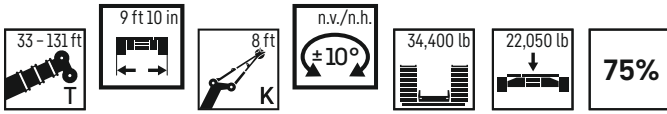
	33 ft	45 ft	56 ft	67 ft	78 ft	90 ft	101 ft	112 ft	123 ft	131 ft	
	K 8 ft										
10	38.9	38.9									10
11	38.9	38.9									11
12	38.9	38.9	38.9								12
13	38.9	38.9	38.9	38.9	38.9						13
14	38.9	38.9	38.9	38.9	38.9						14
15	38.9	38.9	38.9	38.9	38.9						15
16	38.9	38.9	38.9	38.9	38.9	38.9					16
17	38.9	38.9	38.9	38.9	38.9	38.9					17
18	38.9	38.9	38.9	38.9	38.9	38.9					18
19	38.4	38.9	38.9	38.9	38.9	38.9					19
20	37.7	38.9	38.9	38.9	38.9	38.9	34.9				20
22	35.4	38.9	38.9	38.9	38.9	38.8	34				22
24	32.4	38.8	38.9	38.9	38.9	38.3	32.8	26.8			24
26	29.2	37.7	38.9	38.9	38.9	37	31.6	26.1	21.3	18	26
28	26.8	36.2	38.9	38.9	38.6	35.4	30.5	25.4	20.9	17.8	28
30	24.4	34.4	37.4	36.5	35.8	33.5	29.3	24.6	20.5	17.5	30
32	22.3	32.3	34.3	34.3	33.3	31.2	28.1	23.9	19.8	17.2	32
34		30	31.3	32	30.9	29.1	27	23.2	19.2	16.8	34
36		27.9	29.4	29.4	28.8	27.2	26	22.5	18.7	16.4	36
38		26.1	27.4	27.2	26.7	25.6	24.5	21.9	18.2	16.1	38
40		24.3	25.4	25.2	24.8	24.3	23	21.2	17.7	15.7	40
45			21.4	21.2	20.8	20.8	19.9	19.6	16.6	14.9	45
50			18.3	18.2	17.9	18.1	17.5	17.1	15.5	14.1	50
55			15.9	15.7	16	15.7	15.4	15	14.6	13.3	55
60				13.8	14.2	13.7	13.4	13.5	13.3	12.6	60
65				12.6	12.6	12.1	12.2	12.2	11.7	11.7	65
70					11.2	11	10.9	10.8	10.3	10.4	70
75					10	10.1	9.8	9.5	9	9.1	75
80						9	8.7	8.5	8.1	8.1	80
85						8.1	7.8	7.6	7.2	7.2	85
90							7.1	6.8	6.4	6.5	90
95							6.4	6.2	5.7	5.8	95
100							5.8	5.6	5.1	5.1	100
105								5	4.5	4.6	105
110								4.5	4	4.1	110
115									3.5	3.6	115
120									3.1	3.2	120
125										2.8	125
130										2.4	130

t\_201\_00081\_00\_000

# Lifting capacities

## Forces de levage

TK



	33 ft	45 ft	56 ft	67 ft	78 ft	90 ft	101 ft	112 ft	123 ft	131 ft	
	K 8 ft										
10	38.9	38.9									10
11	38.9	38.9									11
12	38.9	38.9	38.9								12
13	38.9	38.9	38.9	38.9	38.9						13
14	38.9	38.9	38.9	38.9	38.9	38.9					14
15	38.9	38.9	38.9	38.9	38.9	38.9					15
16	38.9	38.9	38.9	38.9	38.9	38.9	38.9				16
17	38.9	38.9	38.9	38.9	38.9	38.9	38.9	38.9			17
18	38.9	38.9	38.9	38.9	38.9	38.9	38.9	38.9			18
19	38.4	38.9	38.9	38.9	38.9	38.9	38.9	38.9			19
20	37.7	38.9	38.9	38.9	38.9	38.9	38.9	34.9			20
22	35.4	38.9	38.9	38.9	38.9	38.8	34	34			22
24	32.4	38.8	38.9	38.9	38.9	38.3	32.8	26.8			24
26	29.2	37.7	38.9	38.9	38.9	37	31.6	26.1	21.3	18	26
28	26.8	36.2	38.9	38.9	38.7	35.4	30.5	25.4	20.9	17.8	28
30	24.4	34.4	37.8	37	36.4	33.7	29.3	24.6	20.5	17.5	30
32	22.3	32.3	34.9	34.4	33.9	31.8	28.1	23.9	19.8	17.2	32
34		30	31.9	32.4	31.5	29.7	27	23.2	19.2	16.8	34
36		27.9	29.4	30	29.4	27.7	26	22.5	18.7	16.4	36
38		26.1	27.9	27.7	27.2	25.9	24.8	21.9	18.2	16.1	38
40		24.3	25.9	25.7	25.2	24.6	23.5	21.2	17.7	15.7	40
45			21.8	21.6	21.1	21.1	20.3	19.6	16.6	14.9	45
50			18.6	18.5	18.2	18.4	17.5	17.5	15.5	14.1	50
55			16.2	16	16.2	16	15.7	15.3	14.6	13.3	55
60				14	14.5	14	13.7	13.6	13.5	12.6	60
65				12.6	12.8	12.3	12.5	12.4	12	11.9	65
70					11.4	11	11.1	11	10.5	10.6	70
75					10.1	10.1	9.9	9.5	9	9.1	75
80						9	8.7	8.5	8.1	8.1	80
85						8.1	7.8	7.6	7.2	7.2	85
90							7.1	6.8	6.4	6.5	90
95							6.4	6.2	5.7	5.8	95
100							5.8	5.6	5.1	5.2	100
105								5	4.5	4.6	105
110								4.5	4	4.1	110
115									3.6	3.6	115
120									3.2	3.2	120
125										2.8	125
130										2.4	130

t\_201\_00101\_00\_000



	33 ft	45 ft	56 ft	67 ft	78 ft	90 ft	101 ft	112 ft	123 ft	131 ft	
	K 8 ft										
22	34.7	34.6	31.8	30							22
24	30.7	31.4	29.6	27.6	25.6						24
26	27.3	28	27	25.1	23.4						26
28	24.6	25.2	25.6	24.6	23	21.2	20.3				28
30	22.2	22.9	23.2	22.7	22.2	20.8	18.7				30
32	20.2	20.9	21.2	21.6	20.6	19.9	18.2	17			32
34		19.2	19.5	19.9	19.2	18.6	17.7	16.8	15.7		34
36		17.6	18	18.4	17.9	17.4	16.5	15.7	14.6	14.4	36
38		16.3	16.7	17	16.8	16.3	15.5	14.7	13.7	13.5	38
40		15	15.4	15.8	15.8	15.3	14.5	13.8	12.8	12.6	40
45			13	13.3	13.3	13.2	12.5	11.8	10.9	10.8	45
50			11	11.4	11.3	11.3	10.8	10.2	9.3	9.2	50
55			9.5	9.8	9.7	9.6	9.4	8.8	8	7.9	55
60				8.5	8.5	8.4	8.1	7.7	6.9	6.8	60
65				7.5	7.4	7.3	7.1	6.7	5.9	5.9	65
70					6.4	6.4	6.1	5.8	5.1	5.1	70
75					5.6	5.6	5.3	5	4.4	4.4	75
80						4.8	4.6	4.3	3.7	3.7	80
85							4.2	3.9	3.7	3.2	85
90								3.4	3.1	2.7	90
95								2.9	2.6	2.2	95
100								2.5	2.2	1.7	100
105									1.8	1.4	105
110									1.5	1.4	110

t\_201\_00111\_00\_000

# Equipment

## Crawler travel gear

<b>Frame</b>	Low torsion box construction, consisting of crawler center section and two crawler carriers.
<b>Tracks</b>	Maintenance free crawler tracks with 2 ft 4 in wide triple grouser track pads.
<b>Travel drive</b>	Per crawler carrier, a hydraulic travel drive consisting of an axial piston motor, planetary gear with spring-loaded hydraulically-releasable travel brake. The crawler chains can be controlled synchronously as well as independently and counter-rotating. Travel speed: 0 - 1.9 mph.
<b>Central ballast</b>	22,050 lb, placement blocks at 11,025 lb each, mounting on crawler center section.

## Crane superstructure

<b>Frame</b>	In-house manufactured, weight optimized and torsion resistant welding construction fabricated from high tensile fine grain steel. As connection element to the crawler chassis serves a single row ball bearing slewing ring which allows for unlimited slewing.
<b>Crane engine</b>	4-cylinder Diesel, make Liebherr, watercooled, output 129 kW (175 h.p.), max. torque 723 lb-ft. Exhaust emissions to (EU 2016/1628 and EPA/CARB or ECE-R.96, spark arrestor. Fuel reservoir: 119 gallons.
<b>Crane drive</b>	Diesel-hydraulic, with axial piston variable displacement pumps, with servo-control and capacity control, open controlled oil circuits. Hydraulic drive flanged to the diesel engine via the transfer case.
<b>Control</b>	Electric "Load Sensing" control, simultaneous operation of 4 working motions, 2 self-centering hand control levers (joy-stick type). The crawler travel gear is operated via the 2 two-way controllable foot pedals. The crawler travel gear and the crane superstructure can be driven simultaneously.
<b>Hoist gear</b>	Axial piston fixed displacement motor, Liebherr hoist drum with integrated planetary gear and spring-loaded static brake.
<b>Luffing gear</b>	1 differential ram with safety check valves.
<b>Slewing gear</b>	Axial piston fixed displacement motor, planetary gear, spring-loaded static brake, slewing gear invertible.
<b>Crane cab</b>	Large screen area, compound glass, comfort furnishing, cabin tiltable 20° to rear.
<b>Safety devices</b>	LICCON2 safe load indicator, test system, hoist limit switches, safety valves against rupture of pipes and hoses.
<b>Telescopic boom</b>	Buckling and torsion resistant design of high-tensile structural steel, oviform boom profile, 1 base section and 4 telescopic sections. All telescopic sections hydraulically extendable independent of one another. Rapid-cycle telescoping system "Telematik". 5 steel cable pulleys. Boom length: 33 ft - 131 ft.
<b>Counterweight</b>	12,350 lb
<b>Electrical system</b>	Modern data bus technique, 24 Volt DC.

## Additional equipment

<b>K</b>	8 ft with steel cable pulleys.
<b>K</b>	Single folding jib, 31 ft Double swing-away jib 31 ft - 52 ft Mechanical adjustment 0°; 20°; 40°
<b>2<sup>nd</sup> hoist gear</b>	For two-hook operation or for operation with swing-away jib if the hoist rope shall remain reeved.
<b>Additional counterweight</b>	2 x 11,025 lb for a total counterweight of 34,400 lb.
<b>Track pads</b>	2 ft 4 in flat track pads.

Other items of equipment available on request.

# Équipement

## Train de chenilles

<b>Châssis</b>	Construction en caisson indéformable haute résistance, constitué de la partie centrale du train de roulement et de deux longerons.
<b>Train de roulement</b>	Train de roulement sans entretien, muni de tuiles à 3 nervures, de 2 ft 4 in de large.
<b>Transmission</b>	Une transmission hydraulique par longeron, comprenant un moteur à cylindrée variable et pistons axiaux, un réducteur planétaire avec frein à ressort et à déblocage hydraulique. Les chaînes sont synchrones, indépendantes et une commande inversée est possible. Vitesse de translation: 0 - 1,9 mph.
<b>Contrepoids central</b>	22,050 lb, blocs de suspension de 11,025 lb chacun, fixation sur la partie centrale du train de roulement.

## Partie tournante

<b>Cadre</b>	Fabrication Liebherr, structure mécano-soudée en acier allégé à haute résistance à grains fins. Une couronne d'orientation à une rangée de billes permettant une rotation illimitée sert d'élément de raccordement au train de chenilles.
<b>Moteur</b>	Moteur diesel, 4 cylindres, fabriqué par Liebherr, à refroidissement par eau, de 129 kW (175 ch), couple max. 723 lb-ft. Emissions des gaz d'échappement conformes aux directives (EU) 2016/1628 et EPA/CARB ou ECE-R.96, pare-étincelles. Capacité du réservoir de carburant: 119 gallons.
<b>Entraînement</b>	Diesel hydraulique avec des pompes à débit variable à pistons axiaux, servocommande et régulation de la puissance, circuits hydrauliques ouverts et régulés. Entraînement hydraulique relié au moteur Diesel via une boîte de transfert.
<b>Direction</b>	Direction électrique «Load Sensing», 4 mouvements de travail dirigeable simultanément, deux leviers de commande à 4 positions et à autocentrage. Le train de chenilles est actionné par 2 pédales à double commande. Le train de chenilles et la partie tournante de la grue peuvent être déplacés simultanément.
<b>Mécanisme de levage</b>	Moteur à cylindrée constante et à pistons axiaux. Treuil de marque Liebherr équipé d'un engrenage planétaire et d'un frein d'arrêt commandé par ressort.
<b>Mécanisme de relevage</b>	1 vérin différentiel avec soupapes de retenue.
<b>Dispositif de rotation</b>	Moteur à cylindrée constante à pistons axiaux, engrenage planétaire, frein d'arrêt commandé par ressort, mécanisme d'orientation commutable.
<b>Cabine de grue</b>	Large champ de vision, vitrage de sécurité, équipement pour un confort idéal, cabine inclinable de 20° vers l'arrière.
<b>Dispositif de sécurité</b>	Contrôleur de charge LICCON2, système test, fin de course crochet haut, clapets de sécurité en cas de ruptures de flexibles.
<b>Flèche télescopique</b>	Flèche télescopique en acier à haute résistance à grains fins, à profil ovale, 1 élément de base et 4 éléments télescopiques. Tous les éléments télescopiques indépendamment les uns des autres. Système de télescopage séquentiel rapide «Telematik». 5 poulies de câble en acier. Longueur de flèche: 33 ft - 131 ft.
<b>Contrepoids</b>	12,350 lb
<b>Installation électrique</b>	Technique moderne de transmission de données par BUS de données. Courant continu 24 Volts.

## Équipement supplémentaire

<b>K</b>	8 ft avec poulies de câble en acier.
<b>K</b>	Flechette pliante simple, longueur 31 ft Double flechette pliante 31 ft - 52 ft Reglage mécanique 0° ; 20° ; 40°
<b>2ème mécanisme de levage</b>	Pour l'utilisation du deuxième crochet, ou bien pour une utilisation avec flechette pliante lorsque le câble de levage principal rest mouflé.
<b>Contrepoids supplémentaire</b>	2 x 11,025 lb pour un contrepoids total de 34,400 lb.
<b>Tuiles</b>	Tuiles plates de 2 ft 4 in.
<b>Autres équipements supplémentaires sur demande.</b>	

# Description of symbols

## Explication des symboles



**Max. capacity**  
Capacité max.



**Hookblock/Capacity**  
Moufle à crochet/Capacité de charge



**Max. hoist height**  
Hauteur de levage max.



**No. of sheaves**  
Poulies



**Max. radius**  
Portée max.



**No. of lines**  
Brins



**Driving force**  
Puissance propulsive



**Weight**  
Poids



**Total weight**  
Poids total



**infinitely variable**  
en continu



**Ground pressure**  
Pression au sol



**Radius**  
Portée



**Driving speed**  
Vitesse de translation



**Width crawler chassis**  
Largeur du train de chenilles



**Gradability**  
Aptitude à graver les pentes



**Slewing gear / Working area**  
Mécanisme d'orientation / Plage de travail



**Rope diameter**  
Diamètre



**over front / over rear ±10°**  
en avant / en arrière ±10°



**Rope length**  
Longueur du câble



**Counterweight**  
Contrepoids



**Max. single line pull**  
Effort au brin maxi.



**Central ballast**  
Contrepoids central



**Hoist gear**  
Treuil de levage



**Standard**  
Norme



**Slewing speeds**  
Vitesses d'orientation



**Telescopic boom**  
Flèche télescopique



**Boom length**  
Longueur de la flèche



**Swing away jib**  
Fléchette pliante



**Boom position**  
Position de la flèche



**Assembly jib**  
Fléchette de montage



## Remarks

1. The lifting capacities do not exceed 75 % of the tipping load according to ASME B 30.5. The crane's structural steelwork is in accordance with EN 13000 and ASME B 30.5.
2. For the calculation of the load charts at least a wind speed of 30 ft/s (9 m/s, 20 mph) and regarding the load a sail area of 1 m<sup>2</sup> per ton load and a wind resistance coefficient of 1.2 on the load have been taken into account. For lifting of loads with large sail areas and/or high wind resistance coefficients the maximum wind speed as stated in the load charts has to be reduced.
3. The lifting capacities stated are valid for lifting operation only (corresponding with crane classification according to ISO 4301-1, crane group A1).
4. Lifting capacities are given in kip.
5. The weight of the hook blocks and hooks is part of the load and therefore it must be deducted from the lifting capacities.
6. Working radii are measured from the slewing center.
7. The stated lengths of the telescopic boom are maximum values and may deviate slightly.
8. The lifting capacities given for the telescopic boom apply if the folding jib is removed.
9. Lifting capacities above 93,250 lb / 126,500 lb only with additional pulley block/special equipment.
10. Subject to modification of lifting capacities.
11. Lateral inclination  $\pm 0,3^\circ$ .
12. The data of this brochure serves only for general information. All information is provided without warranty. Instructions for the correct commissioning of the crane please take from the operation manual and the load chart book.
13. The illustrations in this brochure may feature accessories and special equipment not included in the standard scope of delivery.

## Remarques

1. La capacité de charge ne doit pas dépasser 75 % de la charge de basculement conformément à ASME B 30.5. La structure métallique de la grue est conforme à EN 13000 et ASME B 30.5.
2. Une vitesse de vent de 30 ft/s (9 m/s, 20 mph) minimum, une surface de prise au vent de 1 m<sup>2</sup> par tonne ainsi qu'un coefficient de résistance au vent de la charge 1,2 sont pris en compte pour le calcul des tableaux de charge. Lorsque des charges ayant une surface de prise au vent et/ou un coefficient de résistance au vent plus élevé(e)(s) sont levées, la vitesse de vent maximale indiquée dans les tableaux de charge doit être réduite.
3. Forces de levage pour application de grue de montage (correspond à la classification de grues selon ISO 4301-1, groupe de grues A1).
4. Les charges sont indiquées en kip.
5. Le poids du crochet de levage resp. de la moufle à crochet est une partie de la charge et doit donc être déduit de la capacité de charge.
6. Les portées sont calculées à partir de l'axe de rotation.
7. Les longueurs indiquées pour la flèche télescopique sont des valeurs maximales et peuvent légèrement varier dans la réalité.
8. Les charges indiquées pour la flèche télescopique sont valables lorsque la fléchette pliante est démontée.
9. Les charges supérieures à 93,250 lb / 126,500 lb seulement avec moufle additionnel/équipement supplémentaire.
10. Charges données sous réserve de modification.
11. Inclinaison latérale  $\pm 0,3^\circ$ .
12. Les données de cette brochure sont données à titre informatif. Ces renseignements sont sans garantie. Les consignes relatives à la bonne mise en service de la grue sont disponibles dans le manuel d'utilisation et le manuel de tableaux de charge.
13. Les figures contiennent également des accessoires et des équipements spéciaux non inclus de série dans la livraison.



# MyLiebherr

Our MyLiebherr portal is the easy way for you to access Liebherr's digital service world.  
Take advantage of extensive basic and additional services for your mobile and crawler cranes.

Avec notre portail MyLiebherr, accédez facilement à l'univers numérique du service de Liebherr.  
Bénéficiez dès maintenant d'un service global et de prestations complémentaires pour vos grues mobiles et sur chenilles.



## One portal, all services

# MyLiebherr



Planning

**Crane Finder**



Operations

**Performance**



Planning

**Crane Planner 2.0**



Operations

**Documents**



Maintenance

**Spare Parts Catalogue**



Planning

**LICCON Work Planner**



Training

**Digital Crane Operator**



Maintenance

**Parts Shop**

### Proposition 65



**WARNING:** This product can expose you to chemicals, including exhaust emissions, including lead and lead compounds, which are known to the State of California to cause cancer, birth defects or other reproductive harm.  
For more information see: [www.P65warnings.ca.gov/diesel](http://www.P65warnings.ca.gov/diesel)

Subject to modification · Sous réserve de modifications

Liebherr-Werk Ehingen GmbH · Postfach 1361 · 89582 Ehingen, Germany  
Phone +49 73 91 5 02-0 · [www.liebherr.com](http://www.liebherr.com)

MyLiebherr



Printed in Germany (3)  
lwe-tq-201-02-us09-2023