
R 972 Litronic

LIEBHERR

Crawler excavator

Generation

6.2

Engine

330 kW / 443 HP

Tier 4 Final

Operating weight

Backhoe: 77,550 kg / 170,970 lb

Shovel: 70,650 kg / 155,760 lb

Bucket capacity

Backhoe: 1.65–5.50 m³ / 2.16–7.19 yd³

Shovel: 3.50–5.00 m³ / 4.58–6.54 yd³



Experience progress: R 972

Equipment

- Wide choice of backhoe front boom and stick configurations
- Welded structure with cast steel components for improved stress-resistance and longer service life
- Safety check valves to prevent boom and stick cylinder pipes from bursting, with integrated regeneration system for lower fuel consumption

Buckets

- Different levels of protection to suit different areas of application:
 - Standard for loose, non-abrasive materials
 - HD for hard-to-break, moderately abrasive materials
 - HDV for highly abrasive materials
- Different blade designs:
 - straight (for earth-moving and grading)
 - semi-delta (for hard-to-break, hard-to-extract materials)
 - delta (for compacted or slightly cracked materials)

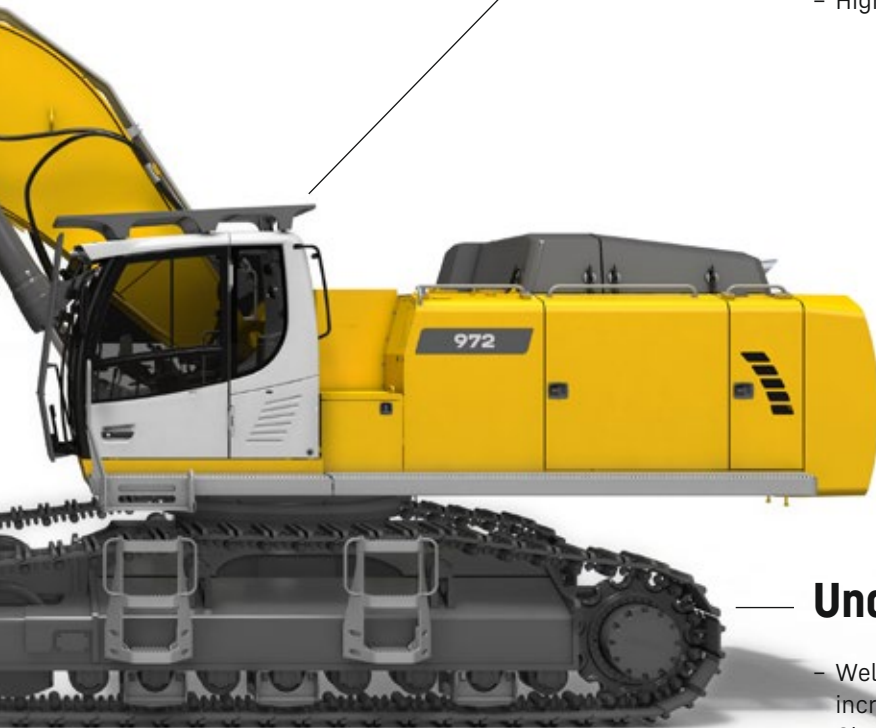


New functions / options

- **Liebherr Power Efficiency – Engine Control**
Up to 10% lower fuel consumption
- **Bucket Fill Assist**
Automatic bucket-filling cycle for increased productivity
- **Modetronic**
Customizable operating modes for optimum adjustment of work cycles to each type of application

Comfort

- Quiet, comfortable cab, the largest and most spacious in its category
- Seat with heater and pneumatic multi-directional shock absorption (air conditioning optional)
- High-resolution 9" color touchscreen



Undercarriage

- Welded undercarriage with rigid X profile for increased robustness
- Chamfered rack pads with double grouser for more maneuverability on difficult terrain
- Moulded two-tooth sprocket for longer service life
- Track rollers on double bearings for increased reliability and durability over time
- Stronger travel motor housing protection for improved resistance to wear and tear from hard, abrasive rocks

Experience progress: R 972 Shovel

Safety

- Completely unobstructed panoramic view, plus rear-view and side-view monitoring cameras for increased safety
- Retractable console for safe and easy access to the cab
- Impact-resistant windscreen and roof glass panel
- Cab riser for the best possible view of the loading area (optional)

Equipment

- Shovel attachment with parallel drivetrain for powerful, even penetration
- Bucket cylinders located under the equipment for better protection
- Optional cylinder guards

Buckets

Different bucket designs:

- Design I: Non-abrasive materials such as limestone without flint inclusions
- Design II: Pre-mined material or easily loosened rocks (DIN 18300 classes 3 to 4)
- Design III: Very abrasive materials such as rocks with high silica content, sandstone, granite etc.
- Front shovel with semi-automatic flap closure, ideally shaped for optimum material penetration and high filling rate





Cab

- 800 mm / 2'7" cab riser for better view
- Optional FOPS and FGPS guards for complete safety when working
- Quiet, comfortable cab

Maintenance

- Access platform for engine and hydraulic control block compartments to enable safe, ergonomic maintenance work
- Left and right catwalks as standard; wide catwalks with hand rail optional
- Automatic central lubrication system as standard
- Shut-off valve on hydraulic tank outlet as standard

Technical data



Engine

Rating	
per SAE J1349	443 HP (330 kW) at 1,800 rpm
per ISO 9249	449 HP (330 kW) at 1,800 rpm
Torque	2,750 Nm at 1,100 rpm / 2,028 lbf ft at 1,000 rpm
Model	Liebherr D9508 A7 SCR
Type	8 cylinder V engine
Bore	128 mm / 5.0 in
Stroke	157 mm / 6.2 in
Displacement	16.16 l / 986 in³
Engine operation	4-stroke diesel Common-Rail
Exhaust gas treatment	Tier 4 Final SCR Filter Passive regeneration by thermo management
Cooling system	Water-cooled and integrated motor oil cooler, after-cooled and fuel cooled
Air cleaner	Dry-type air cleaner with pre-cleaner, primary and safety elements
Fuel tank	1,140 l / 301 gal
Urea tank	180 l / 48 gal
Electrical system	
Voltage	24 V
Batteries	2 x 180 Ah / 12 V
Starter	24 V / 7.8 kW
Alternator	Three-phase current 28 V / 140 A
Engine idling	Sensor controlled
Motor management	Connection to the integrated excavator system controlling via CAN-BUS to the economical utilisation of the service that is available



Hydraulic controls

Power distribution	Via control valves in single block with integrated safety valves
Flow summation	To boom and stick
Closed-loop circuit	For uppercarriage swing drive
Servo circuit	Electro-hydraulic control
Equipment and swing	Proportional via joystick levers
Travel	- Proportional control via foot pedals or removable levers - Speed pre-selection
Additional functions	Proportional regulation via foot pedals or mini-joystick



Hydraulic system

Hydraulic pumps	
For equipment and travel drive	Two Liebherr variable displacement, swashplate pumps
Max. flow	2 x 410 l/min. / 2 x 108 gpm
Max. pressure	350 bar / 5,076 psi
For swing drive	Reversible, variable displacement, swashplate pump, closed-loop circuit
Max. flow	245 l/min. / 65 gpm
Max. pressure	370 bar / 5,366 psi
Pump regulation	Electro-hydraulic with electronic engine speed sensing regulation, minimum flow adjustment, flow compensation, high flow
Hydraulic tank	435 l / 115 gal
Hydraulic system	920 l / 243 gal
Filtration	2 full flow filters in return line with integrated fine filter area (5 µm / 2,500 mesh)
Cooling system	Compact cooler for water cooler, after-cooler, fuel cooler and transmission pump oil, sandwiched with cooler for oil and condenser of air-conditioning with hydrostatically controlled fan drives
MODE selection	Adjustment of engine and hydraulic performance via a mode pre-selector to match application, e.g. for especially economical and environmentally friendly operation or for maximum digging performance and heavy-duty jobs
RPM adjustment	Stepless adjustment of engine output via RPM at each selected mode
Tool Control	20 pre-adjustable pump flows and pressures for add-on attachments



Swing drive

Drive	Liebherr swashplate motor with integrated brake valve
Transmission	Liebherr compact planetary reduction gears
Swing ring	Liebherr, sealed race ball bearing swing ring, internal teeth
Swing speed	0-5.6 rpm stepless
Swing torque	233 kNm / 171,852 lbf ft
Holding brake	Wet multi-disc (spring applied, pressure released)



Cab

Cab	LED work headlights integrated in the ceiling, a door with a sliding window (can be opened on both sides), large storing box and several stowing possibilities, shock-absorbing suspension, sound damping insulating, tinted laminated safety glass, separate window shades for the sunroof window and windscreen, cigarette lighter and 12V plug, storage bins, lunchbox, cup holder
Operator's seat	Liebherr-Comfort seat, airsprung with automatic weight adjustment, vertical and longitudinal seat damping including consoles and joysticks. Seat and armrests adjustable separately and in combination (adjustable in length, height and inclination), seat heating as standard
Arm consoles	Oscillating consoles with seat, tiltable console left
Operation and displays	Large high-resolution operating unit, intuitive, color display with touchscreen, video-compatible, numerous setting, control and monitoring options, e.g. air conditioning control, fuel consumption, machine and attachment parameters
Air-conditioning	Automatic air-conditioning, recirculated air function, fast de-icing and demisting at the press of a button, air vents can be operated via a menu. Recirculated air and fresh air filters can be easily replaced and are accessible from the outside. Heating-cooling unit, designed for extreme outside temperatures, sensors for solar radiation, inside and outside temperatures
Noise emission	
ISO 6396	72 dB(A) = L_{pA} (inside cab)
2000/14/EC	108 dB(A) = L_{WA} (surround noise)



Undercarriage

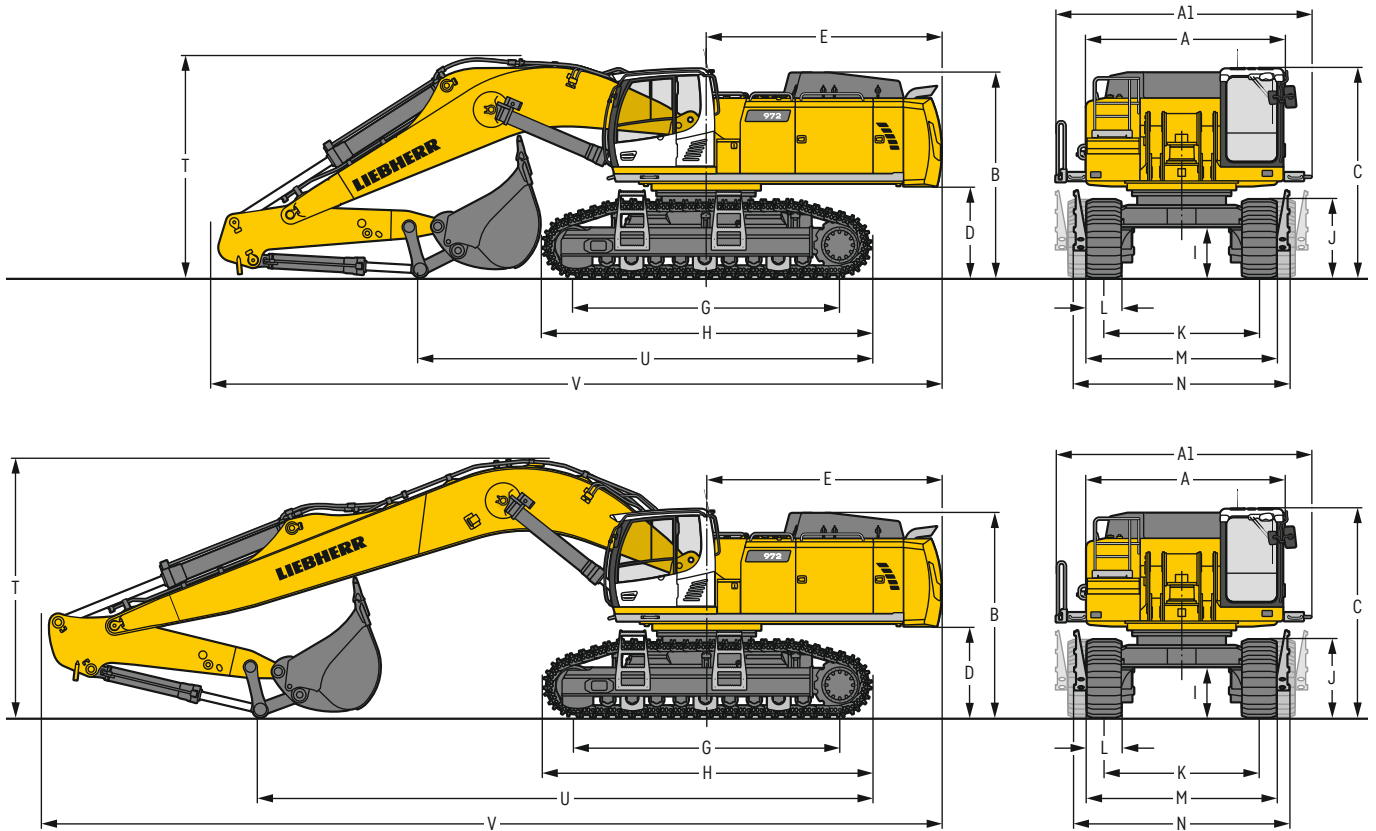
Versions	
HD	Gauge 3,300 mm / 10'10"
LC-V	Gauge 3,390 mm / 11' 1"
Drive	Liebherr swashplate motor with brake valves on both sides
Transmission	Liebherr compact planetary reduction gear
Maximum travel speed	4.1 km/h / 2.5 mph 3.6 km/h / 2.2 mph (with drawbar pull increase)
Drawbar pull on crawler	441 kN / 99,141 lbf 505 kN / 113,529 lbf (with drawbar pull increase)
Track components	DBK, maintenance-free
Track rollers / Carrier rollersz	9 / 2 (HD) 9 / 3 (LC-V)
Tracks	Sealed and greased
Track pads	Double grouser
Holding brake	Wet multi-disc (spring applied, pressure released)
Brake valves	Outside the travel motor
Lashing eyes	Integrated



Equipment

Type	Combination of resistant steel plates and cast steel components
Hydraulic cylinders	Liebherr cylinders with seal and guidance systems
Bearings	Sealed, low maintenance
Lubrication	Automatic central lubrication system (except link and tilt geometry)
Hydraulic connections	Pipes and hoses equipped with SAE split-flange connections
Buckets	Standard equipped with Liebherr tooth system

Dimensions



		HD			LC-V			mm/ft in		
A	Uppercarriage width									
AI	Uppercarriage width with catwalks									
B	Uppercarriage height									
C	Cab height									
D	Counterweight ground clearance									
E	Rear-end length									
G	Wheelbase									
H	Undercarriage length									
I	Undercarriage ground clearance									
J	Track height									
K	Track gauge									
L	Track pad width	500 / 20"	600 / 24"	750 / 30"	500 / 20"	600 / 24"	750 / 30"	2,730 / 3,390 ²⁾	8'11" / 11' 1" ²⁾	
M	Width over tracks	3,920 / 12'10"	3,920 / 12'10"	4,050 / 13' 3"	3,360 / 4,020 ²⁾ / 11' / 13' 2" ²⁾	3,360 / 4,020 ²⁾ / 11' / 13' 2" ²⁾	3,480 / 4,140 ²⁾ / 11' 5" / 13' 7" ²⁾			
N	Width over steps	4,330 ¹⁾ / 14' 2" ¹⁾	4,330 ¹⁾ / 14' 2" ¹⁾	4,330 ¹⁾ / 14' 2" ¹⁾	3,940 ¹⁾ / 4,600 ¹⁾²⁾ / 12'11" ¹⁾ / 15' 1" ¹⁾²⁾	3,940 ¹⁾ / 4,600 ¹⁾²⁾ / 12'11" ¹⁾ / 15' 1" ¹⁾²⁾	3,940 ¹⁾ / 4,600 ¹⁾²⁾ / 12'11" ¹⁾ / 15' 1" ¹⁾²⁾			

¹⁾ width with removable steps
²⁾ work position

	Stick length m/ft in	Mono boom 7.00 m / 23' direct mounting		Mono boom 8.20 m / 26'11" direct mounting		Mono boom 10.00 m / 32'10" direct mounting	
		HD	LC-V	HD	LC-V	HD	LC-V
T	Boom height	2.60 / 8' 6"	3,900 / 12'10"	3,900 / 12'10"	-	-	-
		3.00 / 9'10"	4,000 / 13' 1"	4,000 / 13' 1"	4,050 / 13' 3"	4,150 / 13' 7"	4,500 / 14' 9"
		3.40 / 11' 2"	4,200 / 13' 9"	4,200 / 13' 9"	4,150 / 13' 7"	4,200 / 13' 9"	4,550 / 14'11"
		4.20 / 13' 9"	3,800* / 12' 6"	3,850* / 12' 8"	4,200 / 13' 9"	4,250 / 13'11"	4,600 / 15' 1"
		5.00 / 16' 5"	-	-	4,150 / 13' 7"	4,150 / 13' 7"	4,700 / 15' 5"
U	Length on ground	2.60 / 8' 6"	8,000 / 26' 3"	7,950 / 26' 1"	-	-	-
		3.00 / 9'10"	6,150 / 20' 2"	7,600 / 24'11"	8,900 / 29' 2"	8,850 / 29'	10,800 / 35' 5"
		3.40 / 11' 2"	6,000 / 19' 8"	6,000 / 19' 8"	8,500 / 27'11"	8,450 / 27' 9"	10,800 / 35' 5"
		4.20 / 13' 9"	9,550* / 31' 4"	9,550* / 31' 4"	7,650 / 25' 1"	7,650 / 25' 1"	10,400 / 34' 1"
		5.00 / 16' 5"	-	-	6,500 / 21' 4"	6,450 / 21' 2"	9,550 / 31' 4"
V	Overall length	2.60 / 8' 6"	12,850 / 42' 2"	12,850 / 42' 2"	-	-	-
		3.00 / 9'10"	12,750 / 41'10"	12,750 / 41'10"	14,000 / 45'11"	13,950 / 45' 9"	15,850 / 52'
		3.40 / 11' 2"	12,850 / 42' 2"	12,800 / 42'	14,100 / 46' 3"	14,100 / 46' 3"	15,850 / 52'
		4.20 / 13' 9"	12,700* / 41' 8"	12,700* / 41' 8"	14,150 / 46' 5"	14,100 / 46' 3"	15,850 / 52'
		5.00 / 16' 5"	-	-	14,100 / 46' 3"	14,050 / 46' 1"	15,800 / 51'1"
Bucket		4.00 m ³ / 5.23 yd ³		3.00 m ³ / 3.92 yd ³		2.00 m ³ / 2.62 yd ³	

* without bucket

Transport dimensions

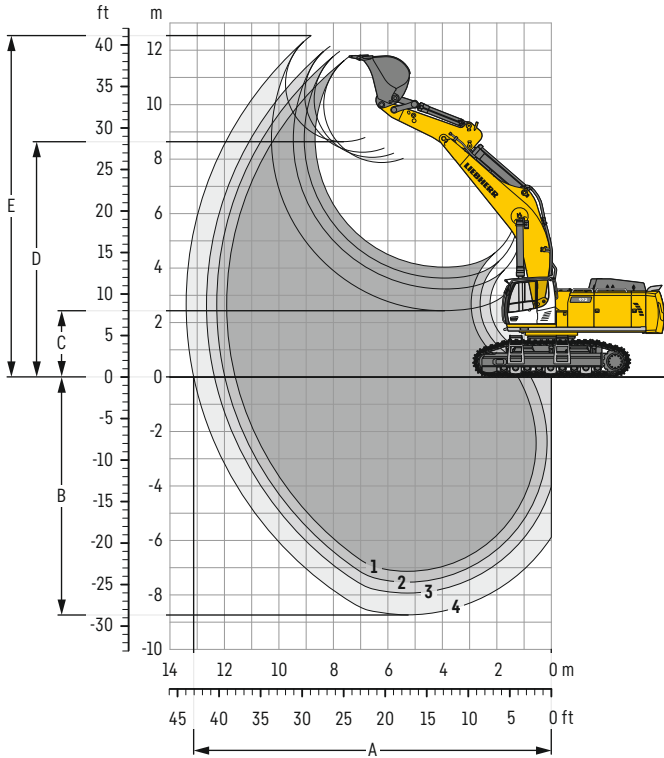
removable elements disassembled

		Mono boom 7.00 m / 23'		Mono boom 8.20 m / 26'11"		Mono boom 10.00 m / 32'10"	
		mm/ft in		mm/ft in		mm/ft in	
Transport width		4,495 / 14'9"		4,495 / 14'9"		4,495 / 14'9"	
Transport length	Undercarriage / Stick m/ft in	HD	LC-V	HD	LC-V	HD	LC-V
		mm/ft in					
	2.60 / 8' 6"	12,850 / 42' 2"	12,850 / 42' 2"	-	-	-	-
	3.00 / 9'10"	12,750 / 41'10"	12,750 / 41'10"	14,000 / 45'11"	13,950 / 45' 9"	15,850 / 52'	15,850 / 52'
	3.40 / 11' 2"	12,850 / 42' 2"	12,800 / 42'	14,100 / 46' 3"	14,100 / 46' 3"	15,850 / 52'	15,850 / 52'
Transport height	2.60 / 8' 6"	3,900 / 12'10"	3,900 / 12'10"	-	-	-	-
	3.00 / 9'10"	4,000 / 13' 1"	4,000 / 13' 1"	4,050 / 13' 3"	4,150 / 13' 7"	4,500 / 14' 9"	4,550 / 14'11"
	3.40 / 11' 2"	4,200 / 13' 9"	4,200 / 13' 9"	4,150 / 13' 7"	4,200 / 13' 9"	4,550 / 14'11"	4,600 / 15' 1"
	4.20 / 13' 9"	3,800* / 12' 6"	3,850* / 12' 8"	4,200 / 13' 9"	4,250 / 13'11"	4,200 / 13' 9"	4,700 / 15' 5"
	5.00 / 16' 5"	-	-	4,150 / 13' 7"	4,150 / 13' 7"	3,800 / 12' 6"	4,700 / 15' 5"
Bucket		4.00 m ³ / 5.23 yd ³		3.00 m ³ / 3.92 yd ³		2.00 m ³ / 2.62 yd ³	

* without bucket

Backhoe bucket

with mono boom 7.00 m / 23'



Digging envelope

without quick coupler	1	2	3	4
Stick length	m / ft in 2.60 / 8'6"	3.00 / 9'10"	3.40 / 11'2"	4.20 / 13'9"
A Max. reach at ground level	m / ft in 11.60 / 38'1"	11.95 / 39' 2"	12.35 / 40'6"	13.10 / 43'
B Max. digging depth	m / ft in 7.15 / 23'5"	7.55 / 24' 9"	7.95 / 26'1"	8.75 / 28'8"
C Min. dumping height	m / ft in 4.05 / 13'3"	3.65 / 12'	3.25 / 10'8"	2.45 / 8'
D Max. dumping height	m / ft in 7.85 / 25'9"	8.05 / 26' 5"	8.25 / 27'1"	8.65 / 28'5"
E Max. cutting height	m / ft in 11.75 / 38'7"	11.95 / 39' 2"	12.10 / 39'8"	12.50 / 41'

Forces

without quick coupler	1	2	3	4
Stick digging force (ISO 6015)	kN / lbf 308 / 69,240	282 / 63,400	260 / 58,450	225 / 50,580
Bucket digging force (ISO 6015)	kN / lbf 354 / 79,580	354 / 79,580	354 / 79,580	354 / 79,580
Stick digging force (SAE J1179)	kN / lbf 289 / 64,970	266 / 59,800	247 / 55,530	215 / 48,330
Bucket digging force (SAE J1179)	kN / lbf 306 / 68,790	306 / 68,790	306 / 68,790	306 / 68,790

Operating weight and ground pressure

The operating weight includes the basic machine with counterweight 11.0t / 24,250 lb, mono boom 7.00 m / 23', stick 2.60 m / 8'6" and HD bucket 4.00 m³ / 5.23 yd³ (4,500 kg / 9,920 lb).

Undercarriage	HD		
Pad width	mm / in 500 / 20"	600 / 24"	750 / 30"
Weight	kg / lb 68,450 / 150,910	69,150 / 152,450	70,150 / 154,650
Ground pressure	kg/cm ² / psi 1.38 / 19.6	1.16 / 16.5	0.94 / 13.4

Undercarriage	LC-V		
Pad width	mm / in 500 / 20"	600 / 24"	750 / 30"
Weight	kg / lb 71,200 / 156,970	71,900 / 158,510	73,000 / 160,940
Ground pressure	kg/cm ² / psi 1.41 / 20.1	1.18 / 16.8	0.96 / 13.7

The operating weight includes the basic machine with counterweight 14.5t / 31,970 lb, mono boom 7.00 m / 23', stick 2.60 m / 8'6" and HD bucket 4.00 m³ / 5.23 yd³ (4,500 kg / 9,920 lb).

Undercarriage	HD		
Pad width	mm / in 500 / 20"	600 / 24"	750 / 30"
Weight	kg / lb 71,950 / 158,630	72,650 / 160,170	73,650 / 162,370
Ground pressure	kg/cm ² / psi 1.45 / 20.6	1.23 / 17.5	1.01 / 14.4

Undercarriage	LC-V		
Pad width	mm / in 500 / 20"	600 / 24"	750 / 30"
Weight	kg / lb 74,700 / 164,690	75,400 / 166,230	76,500 / 168,660
Ground pressure	kg/cm ² / psi 1.48 / 21.1	1.25 / 17.8	1.03 / 14.7

Buckets Machine stability per ISO 10567* (75% of tipping capacity)

	Cutting width	Capacity ISO 7451	Weight	HD undercarriage (with track pads 750 mm/30")			LC-V undercarriage (with track pads 750 mm/30")		
				Stick length (m / ft in)			Stick length (m / ft in)		
				2.60 8'6"	3.00 9'10"	3.40 11'2"	2.60 8'6"	3.00 9'10"	3.40 11'2"
with counterweight 11.0t/24,250 lb									
STD ¹⁾	2,150	3.50	3,350	▲	▲	■	▲	▲	■
	7'1"	4.58	7,390						
	1,950	4.00	3,600	▲	▲	■	▲	▲	■
	6'5"	5.23	7,940						
	2,150	4.50	3,800	■	■	△	▲	■	△
	7'1"	5.88	8,380						
HD ²⁾	2,250	5.00	3,950	▲	■	△	■	■	△
	7'5"	6.54	8,710						
	2,450	5.50	4,200	■	△	-	▲	△	-
	8'	7.19	9,260						
	2,000	3.00	3,900	▲	▲	■	▲	▲	■
	6'7"	3.92	8,600						
HDV ³⁾	2,200	3.50	4,300	▲	▲	■	▲	▲	■
	7'3"	4.58	9,480						
	2,000	4.00	4,500	▲	■	△	▲	■	△
	6'7"	5.23	9,920						
	2,200	4.50	4,850	■	■	-	▲	■	-
	7'3"	5.88	10,690						
HDV ³⁾	2,300	5.00	5,050	■	△	-	■	△	-
	7'7"	6.54	11,130						
	2,000	3.00	4,350	▲	▲	■	▲	▲	■
	6'7"	3.92	9,590						
	2,200	3.50	4,750	▲	▲	■	▲	▲	■
	7'3"	4.58	10,470						
HDV ³⁾	2,000	4.00	5,000	▲	▲	△	▲	▲	△
	6'7"	5.23	11,020						
	2,200	4.50	5,350	▲	■	-	■	■	-
	7'3"	5.88	11,800						
	2,300	5.00	5,600	■	△	-	▲	△	-
	7'7"	6.54	12,350						
with counterweight 14.5t/31,970 lb									
STD ¹⁾	2,150	3.50	3,350	▲	▲	■	▲	▲	■
	7'1"	4.58	7,390						
	1,950	4.00	3,600	▲	▲	■	▲	▲	■
	6'5"	5.23	7,940						
	2,150	4.50	3,800	▲	■	△	▲	■	△
	7'1"	5.88	8,380						
HD ²⁾	2,250	5.00	3,950	▲	■	△	▲	■	△
	7'5"	6.54	8,710						
	2,450	5.50	4,200	■	△	-	■	△	-
	8'	7.19	9,260						
	2,000	3.00	3,900	▲	▲	■	▲	▲	■
	6'7"	3.92	8,600						
HDV ³⁾	2,200	3.50	4,300	▲	▲	■	▲	▲	■
	7'3"	4.58	9,480						
	2,000	4.00	4,500	▲	■	△	▲	■	△
	6'7"	5.23	9,920						
	2,200	4.50	4,850	▲	■	-	▲	■	-
	7'3"	5.88	10,690						
HDV ³⁾	2,300	5.00	5,050	▲	△	-	▲	△	-
	7'7"	6.54	11,130						
	2,000	3.00	4,350	▲	▲	■	▲	▲	■
	6'7"	3.92	9,590						
	2,200	3.50	4,750	▲	▲	■	▲	▲	■
	7'3"	4.58	10,470						
HDV ³⁾	2,000	4.00	5,000	▲	▲	△	▲	▲	△
	6'7"	5.23	11,020						
	2,200	4.50	5,350	▲	■	-	▲	■	-
	7'3"	5.88	11,800						
	2,300	5.00	5,600	■	△	-	■	△	-
	7'7"	6.54	12,350						

* Indicated loads are based on ISO 10567, at maximum reach, and may be swung 360° on firm and even ground

¹⁾ Standard bucket with Liebherr teeth Z 70

²⁾ HD bucket with Liebherr teeth Z 90

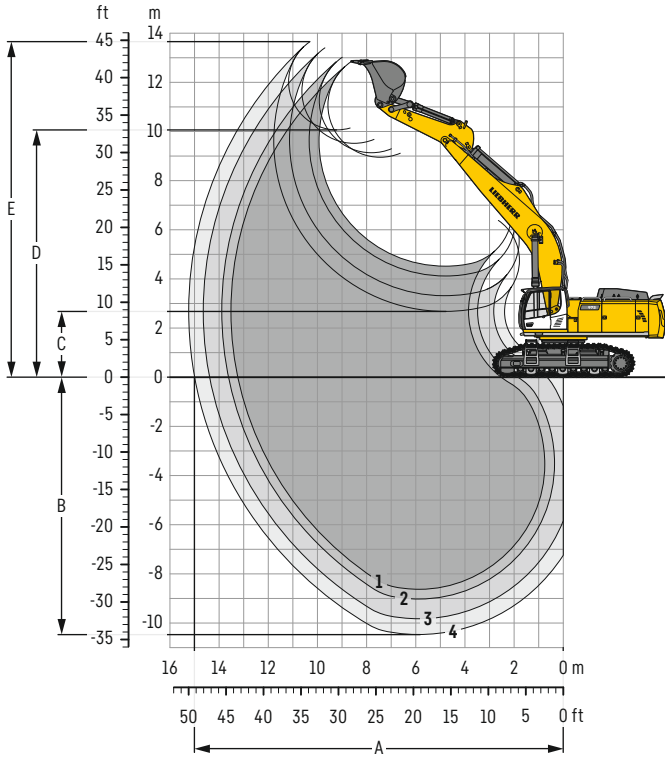
³⁾ HDV bucket with Liebherr teeth Z 90

Other buckets available upon request

Max. material weight ▲ = ≤ 2.0t/m³/3,400lb/yd³, ■ = ≤ 1.8t/m³/3,000lb/yd³, ▲ = ≤ 1.65t/m³/2,800lb/yd³, ■ = ≤ 1.5t/m³/2,500lb/yd³, △ = ≤ 1.2t/m³/2,000lb/yd³, - = not authorized

Backhoe bucket

with mono boom 8.20 m / 26'11"



Digging envelope

without quick coupler		1	2	3	4*
Stick length	m / ft in	3.00 / 9'10"	3.40 / 11' 2"	4.20 / 13' 9"	5.00 / 16' 5"
A Max. reach at ground level	m / ft in	13.25 / 43' 6"	13.60 / 44' 7"	14.35 / 47' 1"	14.95 / 49' 1"
B Max. digging depth	m / ft in	8.65 / 28' 5"	9.05 / 29' 8"	9.85 / 32' 4"	10.50 / 34' 5"
C Min. dumping height	m / ft in	4.50 / 14' 9"	4.10 / 13' 5"	3.30 / 10'10"	2.70 / 8'10"
D Max. dumping height	m / ft in	8.95 / 29' 4"	9.10 / 29'10"	9.50 / 31' 2"	10.05 / 33'
E Max. cutting height	m / ft in	12.80 / 42'	13.00 / 42' 8"	13.40 / 44'	13.60 / 44' 7"

Forces

without quick coupler		1	2	3	4*
Stick digging force (ISO 6015)	kN / lbf	282 / 63,400	260 / 58,450	225 / 50,580	205 / 46,090
Bucket digging force (ISO 6015)	kN / lbf	354 / 79,580	354 / 79,580	354 / 79,580	314 / 70,590
Stick digging force (SAE J1179)	kN / lbf	266 / 59,800	247 / 55,530	215 / 48,330	190 / 42,710
Bucket digging force (SAE J1179)	kN / lbf	306 / 68,790	306 / 68,790	306 / 68,790	272 / 61,150

* with kinematic R 956 Litronic

Operating weight and ground pressure

The operating weight includes the basic machine with counterweight 11.0t / 24,250 lb, mono boom 8.20 m / 26'11", stick 3.00 m / 9'10" and HD bucket 3.00 m³ / 3.92 yd³ (3,900 kg / 8,600 lb).

Undercarriage		HD		
Pad width	mm / in	500 / 20"	600 / 24"	750 / 30"
Weight	kg / lb	68,850 / 151,790	69,550 / 153,330	70,550 / 155,540
Ground pressure	kg/cm ² / psi	1.39 / 19.8	1.17 / 16.6	0.95 / 13.5

Undercarriage		LC-V		
Pad width	mm / in	500 / 20"	600 / 24"	750 / 30"
Weight	kg / lb	71,600 / 157,850	72,300 / 159,390	73,400 / 161,820
Ground pressure	kg/cm ² / psi	1.42 / 20.2	1.19 / 16.9	0.97 / 13.8

The operating weight includes the basic machine with counterweight 14.5t / 31,970 lb, mono boom 8.20 m / 26'11", stick 3.00 m / 9'10" and HD bucket 3.00 m³ / 3.92 yd³ (3,900 kg / 8,600 lb).

Undercarriage		HD		
Pad width	mm / in	500 / 20"	600 / 24"	750 / 30"
Weight	kg / lb	72,350 / 159,510	73,050 / 161,050	74,050 / 163,260
Ground pressure	kg/cm ² / psi	1.46 / 20.8	1.24 / 17.6	1.02 / 14.5

Undercarriage		LC-V		
Pad width	mm / in	500 / 20"	600 / 24"	750 / 30"
Weight	kg / lb	75,100 / 165,570	75,800 / 167,110	76,900 / 169,540
Ground pressure	kg/cm ² / psi	1.49 / 21.2	1.26 / 17.9	1.04 / 14.8

Buckets Machine stability per ISO 10567* (75 % of tipping capacity)

	Cutting width mm ft in	Capacity ISO 7451 m ³ yd ³	Weight kg lb	HD undercarriage (with track pads 750 mm/30")				LC-V undercarriage (with track pads 750 mm/30")			
				Stick length (m / ft in)				Stick length (m / ft in)			
				3.00 9'10"	3.40 11'2"	4.20 13'9"	5.00 16'5"	3.00 9'10"	3.40 11'2"	4.20 13'9"	5.00 16'5"
with counterweight 11.0t/24,250 lb											
STD ¹⁾	1,400 4'7"	2.00 2.62	2,500 5,510	▲	▲	▲	-	▲	▲	▲	-
	1,700 5'7"	2.50 3.27	2,850 6,280	▲	▲	▲	-	▲	▲	▲	-
	1,950 6'5"	3.00 3.92	3,100 6,830	▲	■	△	-	▲	▲	△	-
	1,450 4'9"	2.00 2.62	3,100 6,830	▲	▲	▲	-	▲	▲	▲	-
HD ²⁾	1,750 5'9"	2.50 3.27	3,600 7,940	▲	▲	△	-	▲	▲	△	-
	2,000 6'7"	3.00 3.92	3,900 8,600	■	▲	-	-	▲	■	-	-
	1,450 4'9"	2.00 2.62	3,500 7,720	▲	▲	■	-	▲	▲	■	-
HDV ³⁾	1,750 5'9"	2.50 3.27	4,000 8,820	▲	▲	△	-	▲	▲	△	-
	2,000 6'7"	3.00 3.92	4,350 9,590	▲	■	-	-	▲	■	-	-
	1,350 4'5"	1.65 2.16	2,100 4,630	-	-	-	■	-	-	-	■
STD ⁴⁾	1,550 5'1"	2.00 2.62	2,250 4,960	-	-	-	■	-	-	-	■
	1,750 5'9"	2.35 3.07	2,450 5,400	-	-	-	△	-	-	-	△
	1,350 4'5"	1.65 2.16	2,350 5,180	-	-	-	■	-	-	-	■
HD ⁵⁾	1,550 5'1"	2.00 2.62	2,650 5,840	-	-	-	△	-	-	-	△
with counterweight 14.5t/31,970 lb											
STD ¹⁾	1,400 4'7"	2.00 2.62	2,500 5,510	▲	▲	▲	-	▲	▲	▲	-
	1,700 5'7"	2.50 3.27	2,850 6,280	▲	▲	▲	-	▲	▲	▲	-
	1,950 6'5"	3.00 3.92	3,100 6,830	▲	▲	△	-	▲	▲	△	-
	1,450 4'9"	2.00 2.62	3,100 6,830	▲	▲	▲	-	▲	▲	▲	-
HD ²⁾	1,750 5'9"	2.50 3.27	3,600 7,940	▲	▲	△	-	▲	▲	△	-
	2,000 6'7"	3.00 3.92	3,900 8,600	▲	▲	-	-	▲	▲	-	-
	1,450 4'9"	2.00 2.62	3,500 7,720	▲	▲	■	-	▲	▲	■	-
HDV ³⁾	1,750 5'9"	2.50 3.27	4,000 8,820	▲	▲	△	-	▲	▲	△	-
	2,000 6'7"	3.00 3.92	4,350 9,590	▲	■	-	-	▲	■	-	-
	1,350 4'5"	1.65 2.16	2,100 4,630	-	-	-	■	-	-	-	■
STD ⁴⁾	1,550 5'1"	2.00 2.62	2,250 4,960	-	-	-	■	-	-	-	■
	1,750 5'9"	2.35 3.07	2,450 5,400	-	-	-	△	-	-	-	△
	1,350 4'5"	1.65 2.16	2,350 5,180	-	-	-	■	-	-	-	■
HD ⁵⁾	1,550 5'1"	2.00 2.62	2,650 5,840	-	-	-	△	-	-	-	△

* Indicated loads are based on ISO 10567, at maximum reach, and may be swung 360° on firm and even ground

¹⁾ Standard bucket with Liebherr teeth Z 70

²⁾ HD bucket with Liebherr teeth Z 90

³⁾ HDV bucket with Liebherr teeth Z 90

⁴⁾ Standard bucket from R 956 Litronic with Liebherr teeth Z 70

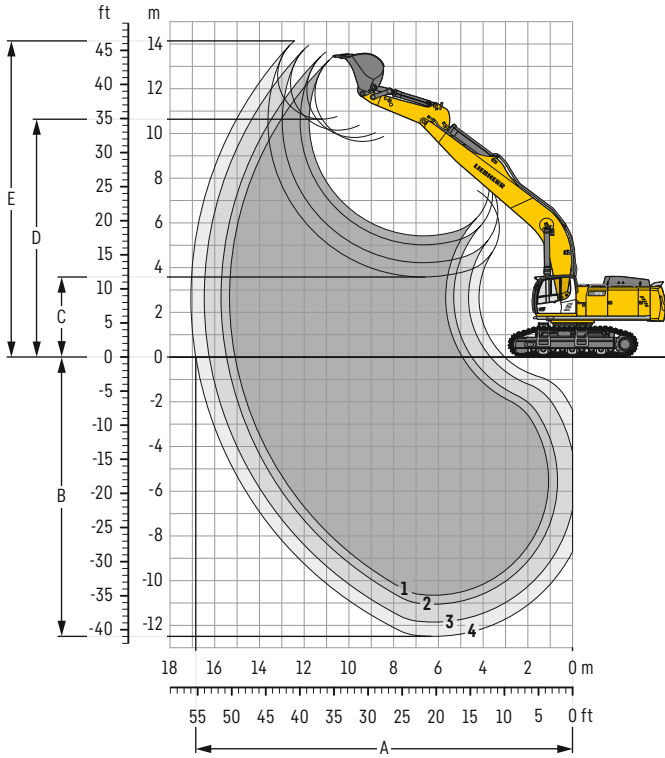
⁵⁾ HD bucket from R 956 Litronic with Liebherr teeth Z 70

Other buckets available upon request

Max. material weight ▲ = ≤ 2.0t/m³/3,400lb/yd³, ■ = ≤ 1.8t/m³/3,000lb/yd³, ▲ = ≤ 1.65t/m³/2,800lb/yd³, ■ = ≤ 1.5t/m³/2,500lb/yd³, △ = ≤ 1.2t/m³/2,000lb/yd³, - = not authorized

Backhoe bucket

with mono boom 10.00 m / 32'10"



Digging envelope

without quick coupler	1	2	3	4*
Stick length	m / ft in 3.00 / 9'10"	3.40 / 11'2"	4.20 / 13' 9"	5.00 / 16' 5"
A Max. reach at ground level	m / ft in 15.10 / 49' 6"	15.45 / 50'8"	16.20 / 53' 2"	16.80 / 55' 1"
B Max. digging depth	m / ft in 10.65 / 34'11"	11.05 / 36'3"	11.85 / 38'11"	12.50 / 41'
C Min. dumping height	m / ft in 5.40 / 17' 9"	5.00 / 16'5"	4.20 / 13' 9"	3.60 / 11'10"
D Max. dumping height	m / ft in 9.65 / 31' 8"	9.80 / 32'2"	10.15 / 33' 4"	10.60 / 34' 9"
E Max. cutting height	m / ft in 13.40 / 44'	13.60 / 44'7"	13.90 / 45' 7"	14.10 / 46' 3"

Forces

without quick coupler	1	2	3	4*
Stick digging force (ISO 6015)	kN / lbf 282 / 63,400	260 / 58,450	225 / 50,580	205 / 46,090
Bucket digging force (ISO 6015)	kN / lbf 354 / 79,580	354 / 79,580	354 / 79,580	314 / 70,590
Stick digging force (SAE J1179)	kN / lbf 266 / 59,800	247 / 55,530	215 / 48,330	190 / 42,710
Bucket digging force (SAE J1179)	kN / lbf 306 / 68,790	306 / 68,790	306 / 68,790	272 / 61,150

* with kinematic R 956 Litronic

Operating weight and ground pressure

The operating weight includes the basic machine with counterweight 14.5t / 31,970 lb, mono boom 10.00 m / 32'10", stick 4.20 m / 11'2" and HD bucket 2.00 m³ / 2.62 yd³ (3,100 kg / 6,830 lb).

Undercarriage	HD		
Pad width	mm / in 500 / 20"	600 / 24"	750 / 30"
Weight	kg / lb 73,000 / 160,940	73,700 / 162,480	74,700 / 164,690
Ground pressure	kg/cm ² / psi 1.48 / 21.1	1.24 / 17.6	1.01 / 14.4

Undercarriage	LC-V		
Pad width	mm / in 500 / 20"	600 / 24"	750 / 30"
Weight	kg / lb 75,750 / 167,000	76,450 / 168,540	77,550 / 170,970
Ground pressure	kg/cm ² / psi 1.50 / 21.3	1.27 / 18.1	1.03 / 14.7

Buckets Machine stability per ISO 10567* (75% of tipping capacity)

	Cutting width	Capacity ISO 7451	Weight	HD undercarriage (with track pads 750 mm / 30")				LC-V undercarriage (with track pads 750 mm / 30")				
				Stick length (m / ft in)				Stick length (m / ft in)				
				3.00 9'10"	3.40 11'2"	4.20 13'9"	5.00 16'5"	3.00 9'10"	3.40 11'2"	4.20 13'9"	5.00 16'5"	
with counterweight 14.5t / 31,970 lb												
STD ¹⁾	1,400 4'7"	2.00 2.62	2,500 5,510	▲	▲	▲	-	▲	▲	▲	-	
	1,700 5'7"	2.50 3.27	2,850 6,280	▲	■	■	-	▲	▲	■	-	
	1,950 6'5"	3.00 3.92	3,100 6,830	▲	■	△	-	■	▲	△	-	
	2,150 7'1"	3.50 4.58	3,350 7,390	△	△	-	-	■	△	-	-	
	1,950 6'5"	4.00 5.23	3,600 7,940	-	-	-	-	△	△	-	-	
	HD ²⁾	1,450 4'9"	2.00 2.62	3,100 6,830	▲	▲	■	-	▲	▲	■	-
1,750 5'9"		2.50 3.27	3,600 7,940	■	▲	△	-	▲	■	△	-	
2,000 6'7"		3.00 3.92	3,900 8,600	△	△	-	-	▲	■	-	-	
2,200 7'3"		3.50 4.58	4,300 9,480	-	-	-	-	△	△	-	-	
HDV ³⁾		1,450 4'9"	2.00 2.62	3,500 7,720	▲	▲	▲	-	▲	▲	▲	-
		1,750 5'9"	2.50 3.27	4,000 8,820	▲	■	-	-	■	■	-	-
	2,000 6'7"	3.00 3.92	4,350 9,590	△	△	-	-	■	△	-	-	
	2,200 7'3"	3.50 4.58	4,750 10,470	-	-	-	-	△	-	-	-	
	STD ⁴⁾	1,350 4'5"	1.65 2.16	2,100 4,630	-	-	-	■	-	-	-	■
		1,550 5'1"	2.00 2.62	2,250 4,960	-	-	-	△	-	-	-	△
HD ⁵⁾		1,350 4'5"	1.65 2.16	2,350 5,180	-	-	-	▲	-	-	-	▲
	1,550 5'1"	2.00 2.62	2,650 5,840	-	-	-	△	-	-	-	△	

* Indicated loads are based on ISO 10567, at maximum reach, and may be swung 360° on firm and even ground

¹⁾ Standard bucket with Liebherr teeth Z 70

²⁾ HD bucket with Liebherr teeth Z 90

³⁾ HDV bucket with Liebherr teeth Z 90

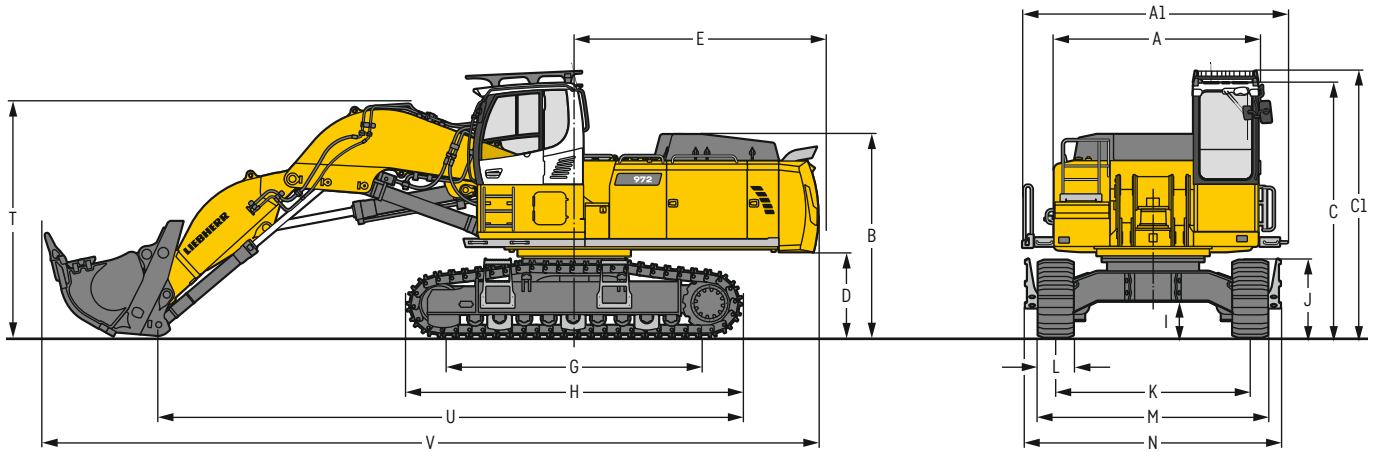
⁴⁾ Standard bucket from R 956 Litronic with Liebherr teeth Z 70

⁵⁾ HD bucket from R 956 Litronic with Liebherr teeth Z 70

Other buckets available upon request

Max. material weight ▲ = ≤ 2.0 t/m³ / 3,400 lb/yd³, ■ = ≤ 1.8 t/m³ / 3,000 lb/yd³, ▲ = ≤ 1.65 t/m³ / 2,800 lb/yd³, ■ = ≤ 1.5 t/m³ / 2,500 lb/yd³, △ = ≤ 1.2 t/m³ / 2,000 lb/yd³, - = not authorized

Dimensions front shovel



	HD	mm / ft in		HD	mm / ft in
A	Uppercarriage width	3,515 / 11' 6"	I	Undercarriage ground clearance	610 / 2'
A1	Uppercarriage width with catwalks	4,495 / 14' 9"	J	Track height	1,315 / 4' 4"
B	Uppercarriage height	3,450 / 11' 4"	K	Track gauge	3,300 / 10' 10"
C	Cab height	4,330 / 14' 2"	L	Track pad width	500 / 20" 600 / 24" 750 / 30"
C1	Cab height with FOPS top guard	4,525 / 14' 10"	M	Width over tracks	3,920 / 12' 10" 3,920 / 12' 10" 4,050 / 13' 3"
D	Counterweight ground clearance	1,445 / 4' 9"	N	Width over steps	4,330* / 14' 2"* 4,330* / 14' 2"* 4,330* / 14' 2"*
E	Rear-end length	4,135 / 13' 7"	T	Boom height	4,000 / 13' 1"
G	Wheelbase	4,575 / 15'	U	Length on ground	9,900 / 32' 6"
H	Undercarriage length	5,695 / 18' 8"	V	Overall length	13,200 / 43' 4"

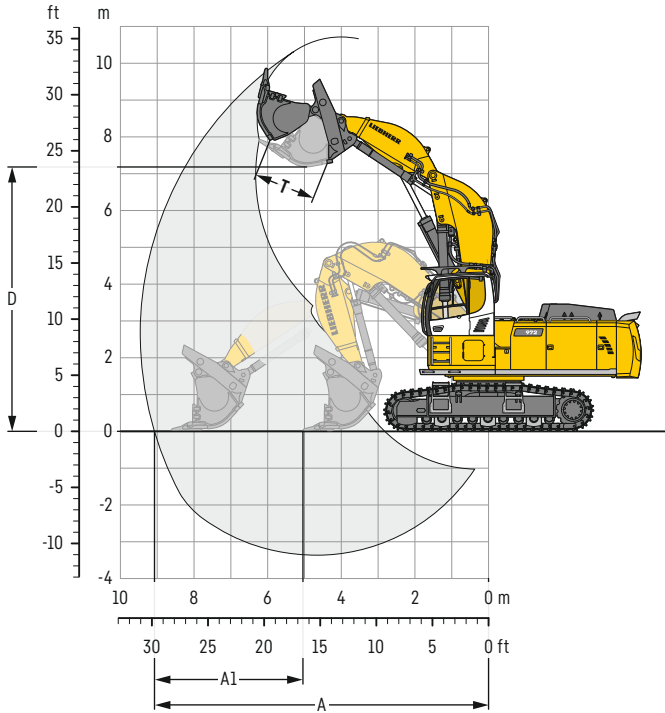
* width with removable steps

Transport dimensions

removable elements disassembled

	Shovel equipment
	mm / ft in
Transport width	4,495 / 14' 9"
Transport length	13,200 / 43' 4"
Transport height	4,525 / 14' 10"
Shovel	4.00 m ³ / 5.23 yd ³

Front shovel



Digging envelope

A	Max. reach at ground level	m / ft in	9.10 / 29'10"
A1	Max. crowd length	m / ft in	3.60 / 11'10"
D	Max. dumping height	m / ft in	7.15 / 23' 5"
T	Bucket opening width	mm / ft in	1,650 / 5' 5"

Forces

Max. crowd force	kn / lbf	500 / 112,410
Max. crowd force at ground level	kn / lbf	410 / 92,170
Max. breakout force	kn / lbf	370 / 83,180

Operating weight and ground pressure

The operating weight includes the basic machine with cab elevation 800 mm / 27", shovel equipment and front shovel 4.00 m³ / 5.23 yd³ (7,000 kg / 15,430 lb) level II.

Undercarriage		HD	
Pad width	mm / in	500 / 20"	600 / 24"
Weight	kg / lb	69,950 / 154,210	70,650 / 155,760
Ground pressure	kg/cm ² / psi	1.41 / 20.1	1.18 / 16.8

Front shovels

Cutting width	Capacity ISO 7451	Weight	Wear kit level	HD undercarriage	Shovel equipment
mm	m ³	kg			
ft in	yd ³	lb			
2,350	3.50	6,600	II		▲
7'9"	4.58	14,550			
2,350	3.50	7,350	III		▲
7'9"	4.58	16,200			
2,600	4.00	6,500	I		▲
8'6"	5.23	14,330			
2,600	4.00	7,000	II		■
8'6"	5.23	15,430			
2,600	4.00	7,900	III		▲
8'6"	5.23	17,420			
2,600	4.50	6,700	I		▲
8'6"	5.88	14,770			
2,600	4.50	7,200	II		▲
8'6"	5.88	15,870			
2,600	4.50	7,800	III		■
8'6"	5.88	17,200			
2,600	5.00	6,800	I		■
8'6"	6.54	14,990			
2,600	5.00	7,500	II		△
8'6"	6.54	16,540			

Level I: For non-abrasive materials, such as limestone without flint inclusion, shot material or easily breakable rock, i.e., deteriorated rock, soft limestone, shale, etc.

Level II: For pre-blasted heavy rock, or deteriorated, cracked material (classification 3 to 4, according to DIN 18300)

Level III: For highly-abrasive materials such as rock with a high silica content, sandstone etc.

Max. material weight ▲ = ≤ 2.0 t/m³ / 3,400 lb/yd³, ■ = ≤ 1.8 t/m³ / 3,000 lb/yd³, ▲ = ≤ 1.65 t/m³ / 2,800 lb/yd³, ■ = ≤ 1.5 t/m³ / 2,500 lb/yd³, △ = ≤ 1.2 t/m³ / 2,000 lb/yd³

Lift capacities

with mono boom 7.00 m / 23', counterweight 11.0 t / 24,250 lb and track pads 750 mm / 30"

Stick 2.60 m / 8'6"

Under-carriage	3.0m 10ft		4.5m 15ft		6.0m 20ft		7.5m 25ft		9.0m 30ft		10.5m 35ft		m ft in		
9.0m t													10.1*	10.1*	7.2
30ft lb													22.4*	22.4*	23'
7.5m t							14.8*	14.8*					9.4*	9.4*	8.3
25ft lb							32.6*	32.6*					20.8*	20.8*	27'1"
6.0m t			23.2*	23.2*	18.1*	18.1*	15.6*	15.6*	11.8*	11.8*			9.2*	9.2*	9.1
20ft lb					39.1*	39.1*	33.9*	33.9*					20.3*	20.3*	29'10"
4.5m t					20.9*	20.9*	16.7*	16.9*	12.7*	14.8*			9.3*	9.3*	9.6
15ft lb					44.9*	44.9*	36.1*	36.6*	27.3*	32.3*			20.5*	20.5*	31'5"
3.0m t					21.8*	23.5*	16.0*	18.3*	12.3*	15.4*			9.7*	9.7*	9.8
10ft lb					47.0*	50.6*	34.4*	39.5*	26.5*	33.6*			21.3*	21.3*	32'1"
1.5m t					20.9*	24.8*	15.4*	19.2*	12.0*	15.9*			10.4*	10.4*	9.7
5ft lb					45.0*	53.7*	33.1*	41.6*	25.8*	34.5*			22.9*	22.9*	32'
0m t					21.8*	21.8*	20.6*	24.9*	15.1*	19.5*	11.8*	15.9*	11.1*	11.7*	9.4
0ft lb					51.2*	51.2*	44.2*	53.9*	32.4*	42.2*	25.4*	34.3*	24.4*	25.7*	31'
-1.5m t	23.2*	23.2*	29.9*	29.9*	20.6*	23.7*	15.0*	18.8*					12.1*	13.8*	8.9
-5ft lb	52.3*	52.3*	65.2*	65.2*	44.3*	51.4*	32.3*	40.6*					26.6*	30.6*	29'1"
-3.0m t	31.0*	31.0*	26.4*	26.4*	21.0*	21.2*	15.3*	16.6*					14.2*	14.9*	8.0
-10ft lb	67.8*	67.8*	57.3*	57.3*	45.0*	45.7*	33.0*	35.4*					31.4*	32.9*	26'1"
-4.5m t			20.4*	20.4*	16.1*	16.1*							13.9*	13.9*	6.6
-15ft lb			43.6*	43.6*	34.0*	34.0*							30.3*	30.3*	21'5"

Stick 3.00 m / 9'10"

Under-carriage	3.0m 10ft		4.5m 15ft		6.0m 20ft		7.5m 25ft		9.0m 30ft		10.5m 35ft		m ft in		
9.0m t													10.5*	10.5*	7.7
30ft lb													8.3*	8.3*	24'8"
7.5m t							14.0*	14.0*					7.8*	7.8*	8.8
25ft lb							30.7*	30.7*					17.2*	17.2*	28'6"
6.0m t			23.2*	23.2*	18.1*	18.1*	14.9*	14.9*	13.1*	13.7*			7.6*	7.6*	9.5
20ft lb					39.1*	39.1*	33.9*	33.9*					16.8*	16.8*	31'1"
4.5m t					20.9*	20.9*	16.3*	16.3*	12.7*	14.3*			7.7*	7.7*	10.0
15ft lb					44.9*	44.9*	36.1*	36.6*	27.4*	31.1*			17.0*	17.0*	32'7"
3.0m t					21.8*	23.5*	16.0*	17.7*	12.3*	15.0*			8.0*	8.0*	10.1
10ft lb					47.5*	49.0*	34.6*	38.4*	26.5*	32.7*			17.6*	17.6*	33'4"
1.5m t					21.0*	24.5*	15.4*	18.9*	11.9*	15.6*			8.6*	8.6*	10.1
5ft lb					45.2*	52.9*	33.1*	40.9*	25.7*	33.9*			18.9*	18.9*	33'2"
0m t					24.0*	24.0*	20.5*	24.9*	15.0*	19.4*	11.7*	15.8*	11.1*	11.7*	9.8
0ft lb					55.4*	55.4*	44.2*	53.9*	32.3*	41.9*	25.2*	34.2*	21.1*	21.1*	32'4"
-1.5m t	22.4*	22.4*	31.3*	31.3*	20.5*	24.1*	14.9*	18.9*	11.7*	15.1*			11.2*	11.2*	9.3
-5ft lb	50.4*	50.4*	68.0*	68.0*	44.0*	52.1*	32.0*	41.0*	25.2*	32.5*			24.7*	24.7*	30'6"
-3.0m t	34.9*	34.9*	27.9*	27.9*	20.7*	21.9*	15.1*	17.2*					12.9*	14.2*	8.4
-10ft lb	76.7*	76.7*	60.6*	60.6*	44.5*	47.4*	32.5*	37.1*					28.6*	31.6*	27'7"
-4.5m t			22.5*	22.5*	17.7*	17.7*							13.8*	13.8*	7.2
-15ft lb			48.3*	48.3*	37.8*	37.8*							30.3*	30.3*	23'2"

Height Can be slewed through 360° In longitudinal position of undercarriage Max. reach * Limited by hydr. capacity

The load values are quoted in tons (t) / lb x 1,000 at stick end (without bucket), and may be swung 360° on firm and even ground. Adjacent values are valid for the undercarriage when in the longitudinal position. Capacities are valid for 750 mm / 30" wide track pads. Indicated loads are based on ISO 10567 standard and do not exceed 75% of tipping or 87% of hydraulic capacity (indicated via *). Without bucket cylinder, link and lever the lift capacities will increase by 1,150 kg / 2,540 lb. Lifting capacity of the excavator is limited by machine stability and hydraulic capacity.

Determine maximum load lift from load lift chart displayed in the operator's cab or from load lift chart detailed in the operator's manual supplied with the machine.

Stick 3.40 m / 11'2"

Under-carriage	3.0m 10ft		4.5m 15ft		6.0m 20ft		7.5m 25ft		9.0m 30ft		10.5m 35ft		m ft in
HD	9.0m t						12.6° 12.6°					7.0° 7.0°	8.2
	30ft lb						24.4° 24.4°					15.5° 15.5°	26'4"
	7.5m t						13.2° 13.2°	9.2° 9.2°				6.6° 6.6°	9.2
	25ft lb						28.9° 28.9°					14.6° 14.6°	30'
	6.0m t						14.2° 14.2°	13.1° 13.1°				6.5° 6.5°	9.9
	20ft lb						30.8° 30.8°	28.3 28.6°				14.2° 14.2°	32'5"
	4.5m t		26.1° 26.1°	19.0° 19.0°		15.6° 15.6°	12.8 13.8°					6.5° 6.5°	10.3
	15ft lb		55.7° 55.7°	40.9° 40.9°		33.9° 33.9°	27.5 30.0°					14.4° 14.4°	33'11"
	3.0m t		23.3° 23.3°	21.9° 21.9°		16.1 17.2°	12.3 14.6°	7.2° 7.2°				6.8° 6.8°	10.5
	10ft lb		58.5° 58.5°	47.2° 47.2°		34.8 37.3°	26.5 31.7°					14.9° 14.9°	34'6"
	1.5m t		19.1° 19.1°	21.2 24.0°		15.4 18.5°	11.9 15.3°					7.2° 7.2°	10.5
	5ft lb		45.3° 45.3°	45.5 51.8°		33.2 40.1°	25.6 33.2°					15.9° 15.9°	34'5"
	0m t		25.0° 25.0°	20.5 24.8°		15.0 19.2°	11.6 15.7°					8.0° 8.0°	10.2
	0ft lb		57.4° 57.4°	44.1 53.6°		32.2 41.5°	25.0 33.9°					17.6° 17.6°	33'6"
	LC-V	-1.5m t	21.3° 21.3°	32.3 32.3°	20.4 24.3°		14.8 19.0°	11.5 15.3°					9.3° 9.3°
-5ft lb		47.8° 47.8°	69.1 70.1°	43.7 52.7°		31.8 41.2°	24.8 33.1°					20.5° 20.5°	31'10"
-3.0m t		31.5° 31.5°	29.3° 29.3°	20.5 22.6°		14.9 17.7°						11.5° 11.5°	8.9
-10ft lb		71.0° 71.0°	63.5° 63.5°	44.1 48.8°		32.0 38.2°						25.6° 25.6°	29'1"
-4.5m t		31.6° 31.6°	24.4° 24.4°	19.1° 19.1°		14.3° 14.3°						13.6° 13.6°	7.7
-15ft lb		68.0° 68.0°	52.5° 52.5°	40.8° 40.8°								29.9° 29.9°	25'
9.0m t						13.1° 13.1°						6.9° 6.9°	8.2
30ft lb						26.6° 26.6°						15.4° 15.4°	26'4"
7.5m t						13.3° 13.3°	10.2° 10.2°					6.6° 6.6°	9.2
25ft lb						29.0° 29.0°	17.0° 17.0°					14.5° 14.5°	30'
6.0m t				16.4° 16.4°	14.3° 14.3°	13.1° 13.1°						6.5° 6.5°	9.9
20ft lb				35.4° 35.4°	31.1° 31.1°	28.7° 28.7°						14.2° 14.2°	32'5"
4.5m t			26.9° 26.9°	19.3° 19.3°	15.8° 15.8°	13.7 13.9°						6.5° 6.5°	10.3
15ft lb			57.2° 57.2°	41.6° 41.6°	34.2° 34.2°	29.6 30.1°						14.4° 14.4°	33'11"
3.0m t			21.7° 21.7°	22.2° 22.2°	17.3 17.4°	13.3 14.7°	7.4° 7.4°					6.8° 6.8°	10.5
10ft lb		54.4° 54.4°	47.8° 47.8°	37.4 37.6°	28.6 31.9°						15.0° 15.0°	34'6"	
1.5m t		19.5° 19.5°	22.9 24.1°	16.6 18.6°	12.9 15.4°						7.3° 7.3°	10.5	
5ft lb		45.9° 45.9°	49.3 52.1°	35.9 40.3°	27.7 33.4°						16.1° 16.1°	34'5"	
0m t		25.9° 25.9°	22.3 24.8°	16.2 19.2°	12.6 15.7°						8.1° 8.1°	10.2	
0ft lb		59.2° 59.2°	48.0 53.6°	35.0 41.6°	27.2 33.9°						17.9° 17.9°	33'6"	
-1.5m t	22.4° 22.4°	32.0° 32.0°	22.2 24.2°	16.0 18.9°	12.5 15.2°						9.4° 9.4°	9.7	
-5ft lb	50.1° 50.1°	69.6° 69.6°	47.7 52.4°	34.6 41.0°	27.0 32.8°						20.9° 20.9°	31'10"	
-3.0m t	32.8° 32.8°	28.9° 28.9°	22.3° 22.3°	16.2 17.5°							11.9° 11.9°	8.9	
-10ft lb	73.6° 73.6°	62.6° 62.6°	48.1 48.2°	34.9 37.7°							26.4° 26.4°	29'1"	
-4.5m t	30.5° 30.5°	23.7° 23.7°	18.5° 18.5°	13.6° 13.6°							13.5° 13.5°	7.7	
-15ft lb	65.8° 65.8°	51.0° 51.0°	39.6° 39.6°								29.7° 29.7°	25'	

Height Can be slewed through 360° In longitudinal position of undercarriage Max. reach * Limited by hydr. capacity

The load values are quoted in tons (t) / lb x 1,000 at stick end (without bucket), and may be swung 360° on firm and even ground. Adjacent values are valid for the undercarriage when in the longitudinal position. Capacities are valid for 750 mm / 30" wide track pads. Indicated loads are based on ISO 10567 standard and do not exceed 75% of tipping or 87% of hydraulic capacity (indicated via *). Without bucket cylinder, link and lever the lift capacities will increase by 1,150 kg / 2,540 lb. Lifting capacity of the excavator is limited by machine stability and hydraulic capacity.

Determine maximum load lift from load lift chart displayed in the operator's cab or from load lift chart detailed in the operator's manual supplied with the machine.

Lift capacities

with mono boom 7.00 m / 23', counterweight 14.5 t / 31,970 lb and track pads 750 mm / 30"

Stick 2.60 m / 8'6"

Under-carriage	3.0m 10ft		4.5m 15ft		6.0m 20ft		7.5m 25ft		9.0m 30ft		10.5m 35ft		m ft in
10.5m t													
35ft lb													
9.0m t													10.1* 10.1*
30ft lb													22.4* 22.4*
7.5m t							14.8* 14.8*						9.4* 9.4*
25ft lb							32.6* 32.6*						20.8* 20.8*
6.0m t			23.2* 23.2*		18.1* 18.1*	15.6* 15.6*			11.8* 11.8*				9.2* 9.2*
20ft lb			51.2* 51.2*		39.1* 39.1*	33.9* 33.9*			26.3* 26.3*				20.3* 20.3*
4.5m t					20.9* 20.9*	16.9* 16.9*		14.7 14.8*					9.3* 9.3*
15ft lb					44.9* 44.9*	36.6* 36.6*		31.6 32.3*					20.5* 20.5*
3.0m t					23.5* 23.5*	18.3* 18.3*		14.3 15.4*					9.7* 9.7*
10ft lb					50.6* 50.6*	39.5* 39.5*		30.8 33.6*					21.3* 21.3*
1.5m t					24.4 24.8*	17.9 19.2*		14.0 15.9*					10.4* 10.4*
5ft lb					52.4 53.7*	38.6 41.6*		30.1 34.5*					22.9* 22.9*
0m t			21.8* 21.8*		24.0 24.9*	17.6 19.5*		13.8 15.9*					11.7* 11.7*
0ft lb			51.2* 51.2*		51.6 53.9*	37.9 42.2*		29.8 34.3*					25.7* 25.7*
-1.5m t	23.2* 23.2*		29.9* 29.9*		23.7* 23.7*	17.6 18.8*							13.8* 13.8*
-5ft lb	52.3* 52.3*		65.2* 65.2*		51.4* 51.4*	37.8 40.6*							30.6* 30.6*
-3.0m t	31.0* 31.0*		26.4* 26.4*		21.2* 21.2*	16.6* 16.6*							14.9* 14.9*
-10ft lb	67.8* 67.8*		57.3* 57.3*		45.7* 45.7*	35.4* 35.4*							32.9* 32.9*
-4.5m t			20.4* 20.4*		16.1* 16.1*								13.9* 13.9*
-15ft lb			43.6* 43.6*		34.0* 34.0*								30.3* 30.3*
-6.0m t													21.5*
-20ft lb													
10.5m t													9.9* 9.9*
35ft lb													22.1* 22.1*
9.0m t													9.3* 9.3*
30ft lb													20.7* 20.7*
7.5m t							14.9* 14.9*						9.3* 9.3*
25ft lb							32.6* 32.6*						20.7* 20.7*
6.0m t			23.9* 23.9*		18.4* 18.4*	15.7* 15.7*			13.3* 13.3*				9.2* 9.2*
20ft lb			50.9* 50.9*		39.6* 39.6*	34.2* 34.2*			29.1* 29.1*				20.3* 20.3*
4.5m t					21.2* 21.2*	17.1* 17.1*		14.9* 14.9*					9.3* 9.3*
15ft lb					45.6* 45.6*	37.0* 37.0*		32.5* 32.5*					20.5* 20.5*
3.0m t					23.7* 23.7*	18.4* 18.4*		15.3 15.5*					9.8* 9.8*
10ft lb					51.0* 51.0*	39.8* 39.8*		33.0 33.7*					21.4* 21.4*
1.5m t					24.9* 24.9*	19.2 19.3*		15.0 15.9*					10.5* 10.5*
5ft lb					53.9* 53.9*	41.4 41.8*		32.3 34.5*					23.2* 23.2*
0m t			23.8* 23.8*		24.8* 24.8*	18.9 19.4*		14.8 15.8*					11.8* 11.8*
0ft lb			54.9* 54.9*		53.8* 53.8*	40.8 42.1*		32.0 34.2*					26.1* 26.1*
-1.5m t	25.2* 25.2*		29.6* 29.6*		23.5* 23.5*	18.6* 18.6*							14.2* 14.2*
-5ft lb	56.3* 56.3*		64.6* 64.6*		51.0* 51.0*	40.3* 40.3*							31.2* 31.2*
-3.0m t	30.5* 30.5*		25.9* 25.9*		20.8* 20.8*	16.1* 16.1*							14.9* 14.9*
-10ft lb	66.7* 66.7*		56.2* 56.2*		44.9* 44.9*	34.5* 34.5*							32.7* 32.7*
-4.5m t			19.4* 19.4*		15.2* 15.2*								13.6* 13.6*
-15ft lb			41.7* 41.7*		31.9* 31.9*								29.8* 29.8*
-6.0m t													21.5*
-20ft lb													

Stick 3.00 m / 9'10"

Under-carriage	3.0m 10ft		4.5m 15ft		6.0m 20ft		7.5m 25ft		9.0m 30ft		10.5m 35ft		m ft in
10.5m t													
35ft lb													
9.0m t													10.5* 10.5*
30ft lb													18.5* 18.5*
7.5m t								14.0* 14.0*					7.8* 7.8*
25ft lb								30.7* 30.7*					17.2* 17.2*
6.0m t									17.1* 17.1*	14.9* 14.9*			7.6* 7.6*
20ft lb									37.0* 37.0*	32.4* 32.4*			16.8* 16.8*
4.5m t													7.7* 7.7*
15ft lb									28.2* 28.2*	19.9* 19.9*			17.0* 17.0*
3.0m t													8.0* 8.0*
10ft lb									42.9* 42.9*	35.3* 35.3*			17.6* 17.6*
1.5m t													8.6* 8.6*
5ft lb													18.9* 18.9*
0m t													9.6* 9.6*
0ft lb													21.1* 21.1*
-1.5m t	22.4* 22.4*		31.3* 31.3*		23.9 24.1*	17.4 18.9*							11.2* 11.2*
-5ft lb	50.4* 50.4*		68.0* 68.0*		51.4 52.1*	37.5 41.0*							24.7* 24.7*
-3.0m t	34.9* 34.9*		27.9* 27.9*		21.9* 21.9*	17.2* 17.2*							14.2* 14.2*
-10ft lb	76.7* 76.7*		60.6* 60.6*		47.4* 47.4*	37.1* 37.1*							31.6* 31.6*
-4.5m t			27.7* 27.7*		22.5* 22.5*	17.7* 17.7*							13.8* 13.8*
-15ft lb			59.7* 59.7*		48.3* 48.3*	37.8* 37.8*							30.3* 30.3*
-6.0m t													23.2*
-20ft lb													
10.5m t													9.9* 9.9*
35ft lb													22.1* 22.1*
9.0m t													9.3* 9.3*
30ft lb													20.7* 20.7*
7.5m t													9.3* 9.3*
25ft lb													20.7* 20.7*
6.0m t													9.2* 9.2*
20ft lb													20.3* 20.3*
4.5m t													9.3* 9.3*
15ft lb													20.5* 20.5*
3.0m t													9.8* 9.8*
10ft lb													21.4* 21.4*
1.5m t													10.5* 10.5*
5ft lb													23.2* 23.2*
0m t													11.8* 11.8*
0ft lb													26.1* 26.1*
-1.5m t	23.8* 23.8*		31.0* 31.0*		23.9* 23.9*	18.7 18.8*							14.2* 14.2*
-5ft lb	53.3* 53.3*		67.4* 67.4*		51.8* 51.8*	40.4 40.7*							31.2* 31.2*
-3.0m t	34.6* 34.6*		27.5* 27.5*		21.6* 21.6*	16.9* 16.9*							14.4* 14.4*
-10ft lb	75.4* 75.4*		59.6* 59.6*		46.7* 46.7*	36.4* 36.4*							31.7* 31.7*
-4.5m t			21.7* 21.7*		17.0* 17.0*								13.7* 13.7*
-15ft lb			46.7* 46.7*		36.3* 36.3*								30.0* 30.0*
-6.0m t													23.2*
-20ft lb													

Height Can be slewed through 360° In longitudinal position of undercarriage Max. reach * Limited by hydr. capacity

The load values are quoted in tons (t) / lb x 1,000 at stick end (without bucket), and may be swung 360° on firm and even ground. Adjacent values are valid for the undercarriage when in the longitudinal position. Capacities are valid for 750 mm / 30" wide track pads. Indicated loads are based on ISO 10567 standard and do not exceed 75% of tipping or 87% of hydraulic capacity (indicated via *). Without bucket cylinder, link and lever the lift capacities will increase by 1,150 kg / 2,540 lb. Lifting capacity of the excavator is limited by machine stability and hydraulic capacity. Determine maximum load lift from load lift chart displayed in the operator's cab or from load lift chart detailed in the operator's manual supplied with the machine.

Stick 3.40 m / 11'2"

Under-carriage	3.0m 10ft		4.5m 15ft		6.0m 20ft		7.5m 25ft		9.0m 30ft		10.5m 35ft		m ft in
10.5m t													
35ft lb													
9.0m t							12.6* 12.6*						7.0* 7.0*
30ft lb							24.4* 24.4*						15.5* 15.5*
7.5m t							13.2* 13.2*	9.2* 9.2*					6.6* 6.6*
25ft lb							28.9* 28.9*						14.6* 14.6*
6.0m t							14.2* 14.2*	13.1* 13.1*					6.5* 6.5*
20ft lb							30.8* 30.8*	28.6* 28.6*					14.2* 14.2*
4.5m t			26.1* 26.1*	19.0* 19.0*	15.6* 15.6*	13.8* 13.8*							6.5* 6.5*
15ft lb			55.7* 55.7*	40.9* 40.9*	33.9* 33.9*	30.0* 30.0*							14.4* 14.4*
3.0m t			23.3* 23.3*	21.9* 21.9*	17.2* 17.2*	14.3* 14.6*							6.8* 6.8*
10ft lb			58.5* 58.5*	47.2* 47.2*	37.3* 37.3*	30.9* 31.7*							14.9* 14.9*
1.5m t			19.1* 19.1*	24.0* 24.0*	18.0* 18.5*	13.9* 15.3*							7.2* 7.2*
5ft lb			45.3* 45.3*	51.8* 51.8*	38.7* 40.1*	30.0* 33.2*							15.9* 15.9*
0m t			25.0* 25.0*	24.0* 24.8*	17.5* 19.2*	13.6* 15.7*							8.0* 8.0*
0ft lb			57.4* 57.4*	51.6* 53.6*	37.7* 41.5*	29.4* 33.9*							17.6* 17.6*
-1.5m t	21.3* 21.3*	32.3* 32.3*	23.8* 24.3*	17.3* 19.0*	13.5* 15.3*								9.3* 9.3*
-5ft lb	47.8* 47.8*	70.1* 70.1*	51.1* 52.7*	37.3* 41.2*	29.2* 33.1*								20.5* 20.5*
-3.0m t	31.5* 31.5*	29.3* 29.3*	22.6* 22.6*	17.4* 17.7*									11.5* 11.5*
-10ft lb	71.0* 71.0*	63.5* 63.5*	48.8* 48.8*	37.5* 38.2*									25.6* 25.6*
-4.5m t	31.6* 31.6*	24.4* 24.4*	19.1* 19.1*	14.3* 14.3*									13.6* 13.6*
-15ft lb	68.0* 68.0*	52.5* 52.5*	40.8* 40.8*										29.9* 29.9*
-6.0m t													
-20ft lb													
10.5m t													
35ft lb													
9.0m t							13.1* 13.1*						6.9* 6.9*
30ft lb							26.4* 26.4*						15.4* 15.4*
7.5m t							13.3* 13.3*	10.2* 10.2*					6.6* 6.6*
25ft lb							29.0* 29.0*	17.0* 17.0*					14.5* 14.5*
6.0m t							14.3* 14.3*	13.1* 13.1*					6.5* 6.5*
20ft lb							31.1* 31.1*	28.7* 28.7*					14.2* 14.2*
4.5m t			26.9* 26.9*	19.3* 19.3*	15.8* 15.8*	13.9* 13.9*							6.5* 6.5*
15ft lb			57.2* 57.2*	41.6* 41.6*	34.2* 34.2*	30.1* 30.1*							14.4* 14.4*
3.0m t			21.7* 21.7*	22.2* 22.2*	17.4* 17.4*	14.7* 14.7*							6.8* 6.8*
10ft lb			54.4* 54.4*	47.8* 47.8*	37.6* 37.6*	31.9* 31.9*							15.0* 15.0*
1.5m t			19.5* 19.5*	24.1* 24.1*	18.6* 18.6*	14.9* 15.4*							7.3* 7.3*
5ft lb			45.9* 45.9*	52.1* 52.1*	40.3* 40.3*	32.2* 33.4*							16.1* 16.1*
0m t			25.9* 25.9*	24.8* 24.8*	18.8* 19.2*	14.6* 15.7*							8.1* 8.1*
0ft lb			59.2* 59.2*	53.6* 53.6*	40.5* 41.6*	31.6* 33.9*							17.9* 17.9*
-1.5m t	22.4* 22.4*	32.0* 32.0*	24.2* 24.2*	18.6* 18.9*	14.6* 15.2*								9.4* 9.4*
-5ft lb	50.1* 50.1*	69.6* 69.6*	52.4* 52.4*	40.2* 41.0*	31.5* 32.8*								20.9* 20.9*
-3.0m t	32.8* 32.8*	28.9* 28.9*	22.3* 22.3*	17.5* 17.5*									11.9* 11.9*
-10ft lb	73.6* 73.6*	62.6* 62.6*	48.2* 48.2*	37.7* 37.7*									26.4* 26.4*
-4.5m t	30.5* 30.5*	23.7* 23.7*	18.5* 18.5*	13.6* 13.6*									13.5* 13.5*
-15ft lb	65.8* 65.8*	51.0* 51.0*	39.6* 39.6*										29.7* 29.7*
-6.0m t													
-20ft lb													

Stick 4.20 m / 13'9"

Under-carriage	3.0m 10ft		4.5m 15ft		6.0m 20ft		7.5m 25ft		9.0m 30ft		10.5m 35ft		m ft in
10.5m t													
35ft lb													
9.0m t										6.1* 6.1*			5.1* 5.1*
30ft lb										11.3* 11.3*			11.3* 11.3*
7.5m t										11.3* 11.3*			4.8* 4.8*
25ft lb										23.1* 23.1*			10.7* 10.7*
6.0m t										11.8* 11.8*	6.8* 6.8*		4.7* 4.7*
20ft lb										27.6* 27.6*	25.8* 25.8*		10.4* 10.4*
4.5m t										12.7* 12.7*	10.3* 10.3*		4.8* 4.8*
15ft lb										36.5* 36.5*	30.9* 30.9*		10.5* 10.5*
3.0m t										20.1* 20.1*	16.0* 16.0*		4.9* 4.9*
10ft lb										61.7* 61.7*	43.4* 43.4*		10.9* 10.9*
1.5m t										26.2* 26.2*	22.7* 22.7*		5.3* 5.3*
5ft lb										61.6* 61.6*	49.1* 49.1*		11.6* 11.6*
0m t										12.5* 12.5*	26.4* 26.4*		8.0* 8.0*
0ft lb										28.0* 28.0*	60.6* 60.6*		17.6* 17.6*
-1.5m t	19.2* 19.2*	31.8* 31.8*	23.6* 24.5*	17.2* 19.0*	13.2* 15.4*					19.2* 19.2*	13.3* 15.4*		6.6* 6.6*
-5ft lb	43.2* 43.2*	72.6* 72.6*	50.8* 52.9*	36.9* 41.0*	28.7* 33.2*					43.2* 43.2*	72.6* 72.6*		14.5* 14.5*
-3.0m t	26.7* 26.7*	31.4* 31.4*	23.5* 23.5*	17.1* 18.3*	13.3* 14.6*					26.7* 26.7*	31.4* 31.4*		7.9* 7.9*
-10ft lb	59.9* 59.9*	67.9* 67.9*	50.7* 50.8*	36.8* 39.6*	28.7* 31.4*					59.9* 59.9*	67.9* 67.9*		17.6* 17.6*
-4.5m t	35.7* 35.7*	27.6* 27.6*	21.0* 21.0*	16.3* 16.3*						35.7* 35.7*	27.6* 27.6*		10.5* 10.5*
-15ft lb	80.5* 80.5*	59.4* 59.4*	45.2* 45.2*	34.9* 34.9*						80.5* 80.5*	59.4* 59.4*		23.6* 23.6*
-6.0m t	28.1* 28.1*	21.1* 21.1*	16.1* 16.1*							28.1* 28.1*	21.1* 21.1*		12.2* 12.2*
-20ft lb	59.5* 59.5*	44.8* 44.8*	33.7* 33.7*							59.5* 59.5*	44.8* 44.8*		26.8* 26.8*
10.5m t													
35ft lb													
9.0m t										7.1* 7.1*			5.1* 5.1*
30ft lb										11.2* 11.2*			11.2* 11.2*
7.5m t										11.4* 11.4*			4.8* 4.8*
25ft lb										23.9* 23.9*			10.6* 10.6*
6.0m t										12.8* 12.8*			4.7* 4.7*
20ft lb										27.9* 27.9*	26.0* 26.0*	11.8* 11.8*	10.4* 10.4*
4.5m t										22.9* 22.9*	17.3* 17.3*		4.8* 4.8*
15ft lb										48.8* 48.8*	37.2* 37.2*		10.5* 10.5*
3.0m t										29.4* 29.4*	20.5* 20.5*		5.0* 5.0*
10ft lb										63.0* 63.0*	44.1* 44.1*		10.9* 10.9*
1.5m t										25.7* 25.7*	23.0* 23.0*		5.3* 5.3*
5ft lb										60.4* 60.4*	49.6* 49.6*		11.7* 11.7*
0m t										13.2* 13.2*	26.8* 26.8*		8.1* 8.1*
0ft lb										29.6* 29.6*	61.4* 61.4*		12.8* 12.8*
-1.5m t	20.0* 20.0*	32.6* 32.6*	24.4* 24.4*	18.5* 18.9*	14.3* 15.3*					20.0* 20.0*	32.6* 32.6*		6.7* 6.7*
-5ft lb	44.8* 44.8*	72.3* 72.3*	52.8* 52.8*	39.8* 41.0*	30.9* 33.1*					44.8* 44.8*	72.3* 72.3*		14.8* 14.8*
-3.0m t	27.6* 27.6*	31.0* 31.0*	23.3* 23.3*	18.2* 18.2*	14.4* 14.4*					27.6* 27.6*	31.0* 31.0*		8.1* 8.1*
-10ft lb	61.8* 61.8*	67.2* 67.2*	50.4* 50.4*	39.3* 39.3*	31.0* 31.0*					61.8* 61.8*	67.2* 67.2*		18.0* 18.0*
-4.5m t	36.8* 36.8*	27.0* 27.0*	20.6* 20.6*	15.9* 15.9*						36.8* 36.8*	27.0* 27.0*		11.0* 11.0*
-15ft lb	80.7* 80.7*	58.2* 58.2*	44.4* 44.4*	34.1* 34.1*						80.7* 80.7*	58.2* 58.2*		24.5* 24.5*
-6.0m t													

Lift capacities

with mono boom 8.20 m / 26'11", counterweight 11.0 t / 24,250 lb and track pads 750 mm / 30"

Stick 3.00 m / 9'10"

Under-carriage	3.0m 10ft		4.5m 15ft		6.0m 20ft		7.5m 25ft		9.0m 30ft		10.5m 35ft		12.0m 40ft		m ft in	
12.0m t																
40ft lb																
10.5m t														8.9*	8.9*	7.9
35ft lb														19.8*	19.8*	25'4"
9.0m t									11.3*	11.3*				8.2*	8.2*	9.3
30ft lb														18.1*	18.1*	30'
7.5m t							12.4*	12.4*	11.4*	11.4*				7.8*	7.8*	10.2
25ft lb							26.9*	26.9*	24.9*	24.9*				17.3*	17.3*	33'2"
6.0m t			16.8*	16.8*	13.7*	13.7*	12.0*	12.0*	9.8	11.1*				7.8*	7.8*	10.8
20ft lb			36.0*	36.0*	29.6*	29.6*	26.1*	26.1*	20.9	22.2*				17.1*	17.1*	35'5"
4.5m t			19.9*	19.9*	15.2*	15.2*	12.1	12.8*	9.5	11.5*				7.9*	7.9*	11.2
15ft lb			42.7*	42.7*	32.9*	32.9*	26.0	27.8*	20.4	25.0*				17.3*	17.3*	36'8"
3.0m t			19.7	21.8*	14.8	16.7*	11.5	13.7*	9.2	11.9*				8.1	8.1*	11.4
10ft lb			42.6	48.3*	31.9	36.0*	24.8	29.7*	19.7	25.9*				17.8	17.9*	37'4"
1.5m t			19.0	20.1*	14.1	17.7*	11.0	14.4*	8.9	12.3*				8.0	8.6*	11.3
5ft lb			41.0	49.6*	30.4	38.2*	23.8	31.1*	19.2	26.6*				17.5	19.0*	37'2"
0m t			18.9	23.1*	13.8	18.1*	10.8	14.7*	8.8	12.4*				8.1	9.4*	11.1
0ft lb			40.6	50.1*	29.6	39.1*	23.2	31.9*	18.8	26.7				17.9	20.8*	36'5"
-1.5m t			18.7*	18.7*	19.0	22.3*	13.7	17.8*	10.7	14.6*				8.6	10.7*	10.6
-5ft lb			43.1*	43.1*	40.7	48.3*	29.4	38.6*	23.0	31.5*				19.0	23.6*	34'11"
-3.0m t	23.6*	23.6*	25.2*	25.2*	19.3	20.8*	13.8	16.9*	10.8	13.8*				9.6	11.9*	9.9
-10ft lb	53.2*	53.2*	54.9*	54.9*	41.4	45.1*	29.7	36.5*	23.3	29.6*				21.2	26.3*	32'5"
-4.5m t	25.6*	25.6*	22.2*	22.2*	18.4*	18.4*	14.2	14.9*						11.5	11.8*	8.8
-15ft lb	55.9*	55.9*	48.1*	48.1*	39.7*	39.7*	30.7	32.1*						25.6	26.0*	28'10"
-6.0m t			17.1*	17.1*	14.2*	14.2*								11.0*	11.0*	7.3
-20ft lb			36.5*	36.5*	30.0*	30.0*								24.0*	24.0*	23'7"
-7.5m t																
-25ft lb																
12.0m t														8.8*	8.8*	7.9
40ft lb														19.6*	19.6*	25'4"
10.5m t														8.1*	8.1*	9.3
35ft lb														18.0*	18.0*	30'
9.0m t									11.3*	11.3*				7.8*	7.8*	10.2
30ft lb									22.0*	22.0*				17.3*	17.3*	33'2"
7.5m t							12.5*	12.5*	11.4*	11.4*				7.8*	7.8*	10.8
25ft lb							27.2*	27.2*	25.0*	25.0*				17.1*	17.1*	35'5"
6.0m t			17.1*	17.1*	13.8*	13.8*	12.1*	12.1*	10.5	11.1*				7.9*	7.9*	11.2
20ft lb			36.6*	36.6*	29.9*	29.9*	26.2*	26.2*	22.6	24.2*				17.4*	17.4*	36'8"
4.5m t			20.3*	20.3*	15.4*	15.4*	12.9*	12.9*	10.3	11.5*				8.2*	8.2*	11.4
15ft lb			43.3*	43.3*	33.2*	33.2*	28.0	28.0*	22.1	25.1*				18.0*	18.0*	37'4"
3.0m t			20.8*	20.8*	16.0	16.8*	12.4	13.8*	9.9	12.0*				8.7	8.7*	11.3
10ft lb			46.3	48.6*	34.5	36.3*	26.8	29.8*	21.4	26.0*				19.2*	19.2*	37'2"
1.5m t			20.6*	20.6*	15.3	17.8*	12.0	14.4*	9.7	12.3*				8.9	9.5*	11.1
5ft lb			44.8	50.4*	33.1	38.4*	25.9	31.2*	20.9	26.7*				19.7	21.0*	36'5"
0m t			20.7	23.0*	15.0	18.1*	11.7	14.7*	9.5	12.4*				9.5	10.8*	10.6
-1.5m t			20.2*	20.2*	14.9	17.8*	11.6	14.5*	9.6	11.9*				10.6	11.9*	9.9
-5ft lb			46.2*	46.2*	44.7	48.1*	32.2	38.5*	25.1	31.4*				23.5	26.3*	32'5"
-3.0m t	24.9*	24.9*	24.9*	24.9*	20.6*	20.6*	15.1	16.7*	11.8	13.6*				11.8*	11.8*	8.8
-10ft lb	55.8*	55.8*	54.4*	54.4*	44.7*	44.7*	32.6	36.2*	25.5	29.3*				25.9*	25.9*	28'10"
-4.5m t			21.7*	21.7*	18.0*	18.0*	14.6*	14.6*						10.8*	10.8*	7.3
-15ft lb			47.1*	47.1*	38.9*	38.9*	31.4*	31.4*						23.6*	23.6*	23'7"
-6.0m t			16.3*	16.3*	13.5*	13.5*										
-20ft lb			34.9*	34.9*	28.6*	28.6*										
-7.5m t																
-25ft lb																

Height Can be slewed through 360° In longitudinal position of undercarriage Max. reach * Limited by hydr. capacity

The load values are quoted in tons (t) / lb x 1,000 at stick end (without bucket), and may be swung 360° on firm and even ground. Adjacent values are valid for the undercarriage when in the longitudinal position. Capacities are valid for 750 mm / 30" wide track pads. Indicated loads are based on ISO 10567 standard and do not exceed 75% of tipping or 87% of hydraulic capacity (indicated via *). Without bucket cylinder, link and lever the lift capacities will increase by 1.150 kg / 2,540 lb. Lifting capacity of the excavator is limited by machine stability and hydraulic capacity.

Determine maximum load lift from load lift chart displayed in the operator's cab or from load lift chart detailed in the operator's manual supplied with the machine.

Stick 3.40 m / 11'2"

Under-carriage	3.0m 10ft		4.5m 15ft		6.0m 20ft		7.5m 25ft		9.0m 30ft		10.5m 35ft		12.0m 40ft		m ft in
12.0m t															
40ft lb															
10.5m t													7.4*	7.4*	8.4
35ft lb													16.6*	16.6*	27'1"
9.0m t									10.6*	10.6*			6.9*	6.9*	9.7
30ft lb									23.4*	23.4*			15.3*	15.3*	31'6"
7.5m t									10.8*	10.8*	8.1*	8.1*	6.6*	6.6*	10.6
25ft lb									23.7*	23.7*			14.6*	14.6*	34'7"
6.0m t			21.8*	21.8*	15.8*	15.8*	13.1*	13.1*	11.5*	11.5*	9.8	10.6*	6.6*	6.6*	11.2
20ft lb					34.0*	34.0*	28.3*	28.3*	25.0*	25.0*	21.1	23.2*	14.5*	14.5*	36'8"
4.5m t					18.9*	18.9*	14.7*	14.7*	12.1	12.4*	9.5	11.1*	6.6*	6.6*	11.6
15ft lb					40.6*	40.6*	31.7*	31.7*	26.1	26.9*	20.4	24.1*	14.6*	14.6*	38"
3.0m t					20.1	21.6*	14.9	16.2*	11.5	13.3*	9.2	11.6*	6.9*	6.9*	11.8
10ft lb					43.4	46.5*	32.1	35.0*	24.8	28.9*	19.7	25.2*	15.2*	15.2*	38'7"
1.5m t					19.1	23.0*	14.2	17.4*	11.0	14.1*	8.9	12.0*	7.3*	7.3*	11.7
5ft lb					41.2	49.6*	30.5	37.5*	23.8	30.5*	19.1	26.1*	16.1*	16.1*	38'6"
0m t					18.8	23.2*	13.7	17.9*	10.7	14.5*	8.7	12.3*	7.7	7.9*	11.5
0ft lb					40.4	50.1*	29.5	38.8*	23.0	31.5*	18.6	26.5	16.9	17.5*	37'8"
-1.5m t			19.2*	19.2*	18.8	22.6*	13.6	17.8*	10.6	14.5*	8.6	12.1*	8.1	8.9*	11.0
-5ft lb			43.8*	43.8*	40.4	48.9*	29.2	38.6*	22.7	31.5*	18.5	26.1*	17.8	19.7*	36'2"
-3.0m t	21.9*	21.9*	26.6*	26.6*	19.0	21.3*	13.7	17.1*	10.6	13.9*			8.9	10.5*	10.3
-10ft lb	49.2*	49.2*	57.9*	57.9*	40.9	46.1*	29.4	37.0*	22.9	30.1*			19.7	23.3*	33'10"
-4.5m t	29.1*	29.1*	23.6*	23.6*	19.1*	19.1*	14.0	15.5*	11.0	12.3*			10.5	11.5*	9.3
-15ft lb	63.2*	63.2*	51.2*	51.2*	41.3*	41.3*	30.1	33.3*	23.7	26.0*			23.4	25.2*	30'5"
-6.0m t			19.0*	19.0*	15.5*	15.5*	12.1*	12.1*					11.0*	11.0*	7.9
-20ft lb			40.6*	40.6*	33.0*	33.0*	25.1*	25.1*					24.0*	24.0*	25'6"
-7.5m t															
-25ft lb															
12.0m t															
40ft lb															
10.5m t													7.4*	7.4*	8.4
35ft lb													16.4*	16.4*	27'1"
9.0m t									10.6*	10.6*			6.8*	6.8*	9.7
30ft lb									23.4*	23.4*			15.2*	15.2*	31'6"
7.5m t									10.9*	10.9*	9.2*	9.2*	6.6*	6.6*	10.6
25ft lb									25.8*	25.8*			14.6*	14.6*	34'7"
6.0m t			22.7*	22.7*	16.2*	16.2*	13.2*	13.2*	11.6*	11.6*	10.6	10.7*	6.6*	6.6*	11.2
20ft lb			47.8*	47.8*	34.6*	34.6*	28.6*	28.6*	25.2*	25.2*	22.8	23.3*	14.5*	14.5*	36'8"
4.5m t					19.3*	19.3*	14.9*	14.9*	12.5*	12.5*	10.3	11.1*	6.7*	6.7*	11.6
15ft lb					41.3*	41.3*	32.0*	32.0*	27.1*	27.1*	22.1	24.2*	14.7*	14.7*	38"
3.0m t					21.7	21.9*	16.1	16.4*	12.5	13.4*	9.9	11.6*	6.9*	6.9*	11.8
10ft lb					47.0*	47.0*	34.7	35.3*	26.9	29.1*	21.4	25.3*	15.2*	15.2*	38'7"
1.5m t					20.9	23.1*	15.4	17.4*	12.0	14.2*	9.6	12.1*	7.3*	7.3*	11.7
5ft lb					45.0	49.8*	33.2	37.7*	25.8	30.6*	20.8	26.2*	16.2*	16.2*	38'6"
0m t					20.6	23.1*	15.0	17.9*	11.7	14.6*	9.4	12.3*	8.0*	8.0*	11.5
0ft lb					44.3	50.1*	32.3	38.8*	25.2	31.5*	20.4	26.6*	17.7*	17.7*	37'8"
-1.5m t			20.3*	20.3*	20.6	22.4*	14.8	17.8*	11.5	14.5*	9.4	12.0*	8.9	9.1*	11.0
-5ft lb			46.1*	46.1*	44.3	48.7*	32.0	38.5*	24.9	31.4*	20.3	26.0*	19.7	20.0*	36'2"
-3.0m t	22.9*	22.9*	26.3*	26.3*	20.9	21.1*	14.9	17.0*	11.6	13.8*			9.9	10.8*	10.3
-10ft lb	51.3*	51.3*	57.3*	57.3*	44.9	45.8*	32.2	36.7*	25.1	29.8*			21.9	23.8*	33'10"
-4.5m t	28.6*	28.6*	23.2*	23.2*	18.8*	18.8*	15.2*	15.2*	11.9*	11.9*			11.4*	11.4*	9.3
-15ft lb	62.1*	62.1*	50.3*	50.3*	40.7*	40.7*	32.7*	32.7*					25.2*	25.2*	30'5"
-6.0m t			18.3*	18.3*	14.9*	14.9*	11.4*	11.4*					10.8*	10.8*	7.9
-20ft lb			39.2*	39.2*	31.9*	31.9*							23.8*	23.8*	25'6"
-7.5m t															
-25ft lb															

Height Can be slewed through 360° In longitudinal position of undercarriage Max. reach * Limited by hydr. capacity

The load values are quoted in tons (t) / lb x 1,000 at stick end (without bucket), and may be swung 360° on firm and even ground. Adjacent values are valid for the undercarriage when in the longitudinal position. Capacities are valid for 750 mm / 30" wide track pads. Indicated loads are based on ISO 10567 standard and do not exceed 75% of tipping or 87% of hydraulic capacity (indicated via *). Without bucket cylinder, link and lever the lift capacities will increase by 1,150 kg / 2,540 lb. Lifting capacity of the excavator is limited by machine stability and hydraulic capacity.

Determine maximum load lift from load lift chart displayed in the operator's cab or from load lift chart detailed in the operator's manual supplied with the machine.

Lift capacities

with mono boom 8.20 m / 26'11", counterweight 11.0 t / 24,250 lb and track pads 750 mm / 30"

Stick 4.20 m / 13'9"

Under-carriage	3.0m 10ft		4.5m 15ft		6.0m 20ft		7.5m 25ft		9.0m 30ft		10.5m 35ft		12.0m 40ft		m ft in		
12.0m t																	
40ft lb																	
10.5m t									8.7*	8.7*				5.4*	5.4*	9.5	
35ft lb									15.3*	15.3*				12.1*	12.1*	30.7"	
9.0m t									9.4*	9.4*				6.1*	6.1*	10.6	
30ft lb									20.6*	20.6*				11.2*	11.2*	34.6"	
7.5m t									9.8*	9.8*				9.4*	9.4*	11.4	
25ft lb									21.3*	21.3*				20.6*	20.6*	37.4"	
6.0m t							11.8*	11.8*	10.5*	10.5*				9.7*	9.7*	12.0	
20ft lb							25.5*	25.5*	22.8*	22.8*				21.2*	21.2*	39.4"	
4.5m t			25.0*	25.0*	17.0*	17.0*	13.5*	13.5*	11.5*	11.5*			7.6	8.6*	4.9*	12.4	
15ft lb			53.0*	53.0*	36.5*	36.5*	29.0*	29.0*	24.9*	24.9*			14.6*	14.6*	10.7*	40.6"	
3.0m t					20.0*	20.0*	15.1*	15.1*	11.6	12.5*			9.2	10.9*	5.0*	12.5	
10ft lb					42.9*	42.9*	32.7*	32.7*	25.0	27.1*			19.7	23.7*	11.1*	41'	
1.5m t					19.4	22.0*	14.3	16.5*	11.1	13.4*			8.8	11.5*	5.3*	12.5	
5ft lb					41.8	47.4*	30.8	35.7*	23.8	29.1*			18.9	24.9*	11.7*	40.11"	
0m t			12.6*	12.6*	18.8	22.8*	13.7	17.4*	10.6	14.1*			8.5	11.9*	5.7*	12.3	
0ft lb			29.1*	29.1*	40.3	49.4*	29.5	37.7*	22.9	30.5*			18.4	25.7*	12.7*	40.2"	
-1.5m t	12.3*	12.3*	18.8*	18.8*	18.5	22.8*	13.4	17.7*	10.4	14.3*			8.4	12.0*	6.4*	11.8	
-5ft lb	27.5*	27.5*	42.7*	42.7*	39.8	49.3*	28.8	38.3*	22.3	31.0*			18.0	25.9	14.1*	38.10"	
-3.0m t	18.9*	18.9*	25.8*	25.8*	18.6	22.0*	13.4	17.3*	10.3	14.1*			8.4	11.6*	7.4*	11.2	
-10ft lb	42.5*	42.5*	58.7*	58.7*	40.0	47.6*	28.7	37.5*	22.2	30.4*			18.1	24.9*	16.4*	36.7"	
-4.5m t	25.9*	25.9*	26.1*	26.1*	18.9	20.3*	13.5	16.2*	10.5	13.1*					8.9	10.3	
-15ft lb	58.3*	58.3*	56.5*	56.5*	40.7	43.9*	29.1	35.0*	22.6	28.1*					19.7	33.6"	
-6.0m t	29.1*	29.1*	22.2*	22.2*	17.6*	17.6*	14.0*	14.0*							10.5*	9.0	
-20ft lb	62.5*	62.5*	47.6*	47.6*	37.6*	37.6*	29.8*	29.8*							23.2*	29.2"	
-7.5m t			15.9*	15.9*	12.6*	12.6*									9.7*	7.2	
-25ft lb			33.3*	33.3*	26.0*	26.0*									21.0*	22.11"	
12.0m t																	
40ft lb																	
10.5m t									9.4*	9.4*					5.4*	5.4*	9.5
35ft lb									17.3*	17.3*					11.9*	11.9*	30.7"
9.0m t									9.4*	9.4*					5.0*	5.0*	10.6
30ft lb									20.6*	20.6*					11.1*	11.1*	34.6"
7.5m t									9.8*	9.8*					9.4*	9.4*	11.4
25ft lb									21.4*	21.4*					20.6*	20.6*	37.4"
6.0m t							12.0*	12.0*	10.6*	10.6*					9.8*	9.8*	12.0
20ft lb							25.8*	25.8*	23.0*	23.0*					21.3*	21.3*	39.4"
4.5m t					17.3*	17.3*	13.7*	13.7*	11.6*	11.6*			8.2	8.9*	4.9*	12.4	
15ft lb			54.6*	54.6*	37.2*	37.2*	29.4*	29.4*	25.1*	25.1*			22.3	22.5*	15.2*	40.6"	
3.0m t					20.2*	20.2*	15.3*	15.3*	12.6	12.6*			9.9	11.0*	5.1*	12.5	
10ft lb					43.5*	43.5*	33.1*	33.1*	27.1	27.3*			21.4	23.8*	11.1*	41'	
1.5m t					21.1	22.1*	15.5	16.7*	12.0	13.5*			9.6	11.5*	5.4*	12.5	
5ft lb					45.6	47.7*	33.4	36.0*	25.9	29.2*			20.6	25.0*	11.8*	40.11"	
0m t			13.3*	13.3*	20.5	22.9*	14.9	17.5*	11.6	14.1*			9.3	11.9*	5.8*	12.3	
0ft lb			30.4*	30.4*	44.2	49.5*	32.2	37.8*	25.0	30.6*			20.1	25.8*	13.8*	40.2"	
-1.5m t	13.1*	13.1*	19.5*	19.5*	20.3	22.7*	14.6	17.7*	11.3	14.3*			9.2	12.0*	6.5*	11.8	
-5ft lb	29.1*	29.1*	44.2*	44.2*	43.7	49.2*	31.6	38.3*	24.5	31.0*			19.8	25.9*	14.3*	38.10"	
-3.0m t	19.7*	19.7*	26.7*	26.7*	20.4	21.8*	14.6	17.3*	11.3	14.0*			9.2	11.5*	7.6*	11.2	
-10ft lb	44.0*	44.0*	60.5*	60.5*	43.9	47.3*	31.5	37.3*	24.4	30.3*			19.9	24.7*	16.7*	36.7"	
-4.5m t	26.8*	26.8*	25.7*	25.7*	20.1*	20.1*	14.8	16.0*	11.5	12.9*					9.4*	10.3	
-15ft lb	60.1*	60.1*	55.8*	55.8*	43.4*	43.4*	32.0	34.6*	24.9	27.7*					20.9*	33.6"	
-6.0m t	28.3*	28.3*	21.6*	21.6*	17.1*	17.1*	13.6*	13.6*							10.5*	9.0	
-20ft lb	60.7*	60.7*	46.5*	46.5*	36.8*	36.8*	29.0*	29.0*							23.1*	29.2"	
-7.5m t					11.7*	11.7*									9.5*	7.2	
-25ft lb					24.2*	24.2*									20.5*	20.5*	22.11"

Height Can be slewed through 360° In longitudinal position of undercarriage Max. reach * Limited by hydr. capacity

The load values are quoted in tons (t) / lb x 1,000 at stick end (without bucket), and may be swung 360° on firm and even ground. Adjacent values are valid for the undercarriage when in the longitudinal position. Capacities are valid for 750 mm / 30" wide track pads. Indicated loads are based on ISO 10567 standard and do not exceed 75% of tipping or 87% of hydraulic capacity (indicated by *). Without bucket cylinder, link and lever the lift capacities will increase by 1.150 kg / 2,540 lb. Lifting capacity of the excavator is limited by machine stability and hydraulic capacity.

Determine maximum load lift from load lift chart displayed in the operator's cab or from load lift chart detailed in the operator's manual supplied with the machine.

Stick 5.00 m / 16'5"

Under-carriage	3.0m 10ft		4.5m 15ft		6.0m 20ft		7.5m 25ft		9.0m 30ft		10.5m 35ft		12.0m 40ft		m ft in		
12.0m t																	
40ft lb																	
10.5m t														4.2*	4.2*	10.5	
35ft lb														9.3*	9.3*	33'11"	
9.0m t											8.4*	8.4*		3.9*	3.9*	11.5	
30ft lb											17.2*	17.2*		8.7*	8.7*	37'5"	
7.5m t											8.6*	8.6*	5.7*	5.7*		12.3	
25ft lb											18.8*	18.8*	8.7*	8.7*	8.4*	40'	
6.0m t									9.7*	9.7*	9.0*	9.0*	8.0	8.5*	3.8*	3.8*	12.8
20ft lb									21.0*	21.0*	19.7*	19.7*	16.6*	16.6*	8.3*	8.3*	41'11"
4.5m t					15.2*	15.2*	12.4*	12.4*	10.7*	10.7*	9.6*	9.6*	7.8	9.0*	3.8*	3.8*	13.1
15ft lb					32.7*	32.7*	26.7*	26.7*	23.2*	23.2*	21.0*	21.0*	16.7	19.6*	8.4*	8.4*	43'
3.0m t			18.3*	18.3*	18.4*	18.4*	14.2*	14.2*	11.8*	11.8*	9.4	10.4*	7.5	9.4*	3.9*	3.9*	13.3
10ft lb			45.2*	45.2*	39.5*	39.5*	30.6*	30.6*	25.6*	25.6*	20.2	22.5*	16.1	20.5*	8.6*	8.6*	43'6"
1.5m t			12.7*	12.7*	20.1	20.9*	14.7	15.8*	11.3	12.9*	9.0	11.0*	7.3	9.8*	4.1*	4.1*	13.2
5ft lb			29.8*	29.8*	43.2	45.0*	31.6	34.1*	24.3	27.9*	19.3	23.9*	15.6	21.3*	9.1*	9.1*	43'5"
0m t			14.5*	14.5*	19.0	22.3*	13.9	16.9*	10.8	13.7*	8.6	11.6*	7.1	10.1	4.4*	4.4*	13.0
0ft lb			33.1*	33.1*	40.9	48.2*	29.9	36.6*	23.2	29.6*	18.5	25.1*	15.1	21.6	9.8*	9.8*	42'8"
-1.5m t	11.9*	11.9*	18.3*	18.3*	18.6	22.8*	13.5	17.5*	10.4	14.2*	8.4	11.9*	6.9	9.9	4.9*	4.9*	12.6
-5ft lb	26.6*	26.6*	41.6*	41.6*	39.8	49.4*	28.9	37.9*	22.4	30.7*	18.0	25.7*	14.9	21.4	10.8*	10.8*	41'5"
-3.0m t	16.8*	16.8*	23.5*	23.5*	18.4	22.5*	13.3	17.5*	10.3	14.2*	8.3	11.8*	6.0*	6.0*	5.6*	5.6*	12.0
-10ft lb	37.7*	37.7*	53.3*	53.3*	39.6	48.7*	28.6	37.9*	22.1	30.7*	17.9	25.5*			12.4*	12.4*	39'5"
-4.5m t	22.3*	22.3*	28.2*	28.2*	18.6	21.4*	13.3	16.9*	10.3	13.7*	8.4	11.1*			6.7*	6.7*	11.2
-15ft lb	50.1*	50.1*	61.0*	61.0*	40.0	46.2*	28.7	36.4*	22.2	29.5*	18.1	23.8*			14.9*	14.9*	36'6"
-6.0m t	28.7*	28.7*	24.9*	24.9*	19.1	19.2*	13.7	15.3*	10.6	12.2*					8.7*	8.7*	10.0
-20ft lb	64.8*	64.8*	53.7*	53.7*	41.0	41.4*	29.4	32.8*	22.9	25.9*					19.5*	19.5*	32'7"
-7.5m t	26.7*	26.7*	19.9*	19.9*	15.6*	15.6*	12.1*	12.1*							9.8*	9.8*	8.4
-25ft lb	56.5*	56.5*	42.3*	42.3*	33.0*	33.0*	25.3*	25.3*							21.5*	21.5*	27'2"
12.0m t														4.6*	4.6*		
40ft lb																	
10.5m t											4.8*	4.8*		4.2*	4.2*	10.5	
35ft lb											8.4*	8.4*		9.2*	9.2*	33'11"	
9.0m t											8.4*	8.4*		3.9*	3.9*	11.5	
30ft lb											17.9*	17.9*		8.7*	8.7*	37'5"	
7.5m t											8.6*	8.6*	6.1*	6.1*	3.8*	3.8*	12.3
25ft lb											18.8*	18.8*	9.8*	9.8*	8.4*	8.4*	40'
6.0m t									9.8*	9.8*	9.1*	9.1*	8.7*	8.7*	3.8*	3.8*	12.8
20ft lb									21.2*	21.2*	19.8*	19.8*	17.1*	17.1*	8.3*	8.3*	41'11"
4.5m t			21.8*	21.8*	15.6*	15.6*	12.6*	12.6*	10.8*	10.8*	9.7*	9.7*	8.5	9.0*	3.8*	3.8*	13.1
15ft lb			46.2*	46.2*	33.4*	33.4*	27.1*	27.1*	23.5*	23.5*	21.1*	21.1*	18.1	19.7*	8.4*	8.4*	43'
3.0m t			16.8*	16.8*	18.7*	18.7*	14.4*	14.4*	12.0*	12.0*	10.2	10.4*	8.2	9.4*	3.9*	3.9*	13.3
10ft lb			41.4*	41.4*	40.1*	40.1*	31.0*	31.0*	25.9*	25.9*	21.9	22.7*	17.6	20.6*	8.7*	8.7*	43'6"
1.5m t			12.7*	12.7*	21.1*	21.1*	15.8	15.9*	12.2	13.0*	9.7	11.1*	7.9	9.8*	4.2*	4.2*	13.2
5ft lb			29.7*	29.7*	45.4*	45.4*	34.2	34.4*	26.4	28.1*	21.0	24.1*	17.0	21.4*	9.2*	9.2*	43'5"
0m t			14.8*	14.8*	20.7	22.4*	15.1	17.0*	11.7	13.8*	9.4	11.6*	7.7	10.1*	4.5*	4.5*	13.0
0ft lb			33.8*	33.8*	44.7	48.4*	32.6	36.8*	25.3	29.8*	20.2	25.2*	16.6	22.0*	9.9*	9.9*	42'8"
-1.5m t	12.4*	12.4*	18.9*	18.9*	20.3	22.8*	14.7	17.6*	11.4	14.2*	9.2	11.9*	7.6	10.2*	5.0*	5.0*	12.6
-5ft lb	27.7*	27.7*	42.7*	42.7*	43.7	49.4*	31.7	38.0*	24.5	30.7*	19.8	25.8*	16.4	20.9*	11.0*	11.0*	41'5"
-3.0m t	17.4*	17.4*	24.2*	24.2*	20.2	22.4*	14.5	17.5*	11.2	14.2*	9.1	11.8*			5.7*	5.7*	12.0
-10ft lb	38.9*	38.9*	54.6*	54.6*	43.5	48.5*	31.3	37.9*	24.3	30.7*	19.6	25.4*			12.6*	12.6*	39'5"
-4.5m t	22.9*	22.9*	27.9*	27.9*	20.5	21.2*	14.6	16.7*	11.3	13.6*	9.2	11.0*			6.9*	6.9*	11.2
-15ft lb	51.5*	51.5*	60.4*	60.4*	44.0	45.8*	31.5	36.2*	24.4	29.2*	19.9	23.5*			15.3*	15.3*	36'6"
-6.0m t	29.6*	29.6*	24.5*	24.5*	18.9*	18.9*	15.0	15.0*	11.6	11.9*					9.0*	9.0*	10.0
-20ft lb	66.6*	66.6*	52.8*	52.8*	40.7*	40.7*	32.3*	32.3*	25.2	25.4*					20.2*	20.2*	32'7"
-7.5m t	25.6*	25.6*	19.2*	19.2*	15.0*	15.0*	11.6*	11.6*							9.7*	9.7*	8.4
-25ft lb	54.2*	54.2*	40.8*	40.8*	31.8*	31.8*	24.0*	24.0*							21.3*	21.3*	27'2"

Height Can be slewed through 360° In longitudinal position of undercarriage Max. reach * Limited by hydr. capacity

The load values are quoted in tons (t) / lb x 1,000 at stick end (without bucket), and may be swung 360° on firm and even ground. Adjacent values are valid for the undercarriage when in the longitudinal position. Capacities are valid for 750 mm / 30" wide track pads. Indicated loads are based on ISO 10567 standard and do not exceed 75% of tipping or 87% of hydraulic capacity (indicated via *). Without bucket cylinder, link and lever the lift capacities will increase by 1,150 kg / 2,540 lb / 825 kg¹⁾ / 1,820 lb¹⁾. Lifting capacity of the excavator is limited by machine stability and hydraulic capacity.

Determine maximum load lift from load lift chart displayed in the operator's cab or from load lift chart detailed in the operator's manual supplied with the machine.

¹⁾ for stick 5.00 m / 16'5"

Lift capacities

with mono boom 8.20 m / 26'11", counterweight 14.5 t / 31,970 lb and track pads 750 mm / 30"

Stick 3.00 m / 9'10"

Under-carriage	3.0m 10ft		4.5m 15ft		6.0m 20ft		7.5m 25ft		9.0m 30ft		10.5m 35ft		12.0m 40ft		m ft in
12.0m t															
40ft lb															
10.5m t														8.9*	8.9*
35ft lb														19.8*	19.8*
9.0m t														8.2*	8.2*
30ft lb														18.1*	18.1*
7.5m t														7.8*	7.8*
25ft lb														17.3*	17.3*
6.0m t					16.8*	16.8*	13.7*	13.7*	12.0*	12.0*	11.1*	11.1*		7.8*	7.8*
20ft lb					36.0*	36.0*	29.6*	29.6*	26.1*	26.1*	22.2*	22.2*		17.1*	17.1*
4.5m t					19.9*	19.9*	15.2*	15.2*	12.8*	12.8*	11.2*	11.5*		7.9*	7.9*
15ft lb					42.7*	42.7*	32.9*	32.9*	27.8*	27.8*	24.0*	25.0*		17.3*	17.3*
3.0m t					21.8*	21.8*	16.7*	16.7*	13.5*	13.7*	10.9*	11.9*		8.1*	8.1*
10ft lb					48.3*	48.3*	36.0*	36.0*	29.1*	29.7*	23.3*	25.9*		17.9*	17.9*
1.5m t					20.1*	20.1*	16.6*	17.7*	13.1*	14.4*	10.6*	12.3*		8.6*	8.6*
5ft lb					48.4*	49.6*	35.9*	38.2*	28.1*	31.1*	22.8*	26.6*		19.0*	19.0*
0m t					22.3*	23.1*	16.3*	18.1*	12.8*	14.7*	10.4*	12.4*		9.4*	9.4*
0ft lb					48.0*	50.1*	35.1*	39.1*	27.5*	31.9*	22.4*	26.8*		20.8*	20.8*
-1.5m t			18.7*	18.7*	22.3*	22.3*	16.2*	17.8*	12.7*	14.6*	10.4*	12.0*		10.3*	10.7*
-5ft lb			43.1*	43.1*	48.2*	48.3*	34.9*	38.6*	27.3*	31.5*				22.6*	23.6*
-3.0m t	23.6*	23.6*	25.2*	25.2*	20.8*	20.8*	16.4*	16.9*	12.8*	13.8*				11.4*	11.9*
-10ft lb	53.2*	53.2*	54.9*	54.9*	45.1*	45.1*	35.2*	36.5*	27.6*	29.6*				25.2*	26.3*
-4.5m t	25.6*	25.6*	22.2*	22.2*	18.4*	18.4*	14.9*	14.9*						11.8*	11.8*
-15ft lb	55.9*	55.9*	48.1*	48.1*	39.7*	39.7*	32.1*	32.1*						26.0*	26.0*
-6.0m t			17.1*	17.1*	14.2*	14.2*								11.0*	11.0*
-20ft lb			36.5*	36.5*	30.0*	30.0*								24.0*	24.0*
-7.5m t															
-25ft lb															
12.0m t														8.8*	8.8*
40ft lb														19.6*	19.6*
10.5m t														8.1*	8.1*
35ft lb														18.0*	18.0*
9.0m t														7.8*	7.8*
30ft lb														17.3*	17.3*
7.5m t														7.8*	7.8*
25ft lb														17.1*	17.1*
6.0m t					17.1*	17.1*	13.8*	13.8*	12.1*	12.1*	11.1*	11.1*		7.8*	7.8*
20ft lb					36.6*	36.6*	29.9*	29.9*	26.2*	26.2*	24.2*	24.2*		17.1*	17.1*
4.5m t					20.3*	20.3*	15.4*	15.4*	12.9*	12.9*	11.5*	11.5*		7.9*	7.9*
15ft lb					43.3*	43.3*	33.2*	33.2*	28.0*	28.0*	25.1*	25.1*		17.4*	17.4*
3.0m t					20.8*	20.8*	16.8*	16.8*	13.8*	13.8*	11.6*	12.0*		8.2*	8.2*
10ft lb					48.6*	48.6*	36.3*	36.3*	29.8*	29.8*	25.1*	26.0*		18.0*	18.0*
1.5m t					20.6*	20.6*	17.8*	17.8*	14.0*	14.4*	11.4*	12.3*		8.7*	8.7*
5ft lb					50.4*	50.4*	38.4*	38.4*	30.3*	31.2*	24.6*	26.7*		19.2*	19.2*
0m t					23.0*	23.0*	17.6*	18.1*	13.8*	14.7*	11.2*	12.4*		9.5*	9.5*
0ft lb					50.0*	50.0*	38.0*	39.1*	29.7*	31.9*	24.3*	26.8*		21.0*	21.0*
-1.5m t			20.2*	20.2*	22.1*	22.1*	17.5*	17.8*	13.7*	14.5*	11.3*	11.9*		10.8*	10.8*
-5ft lb			46.2*	46.2*	48.1*	48.1*	37.8*	38.5*	29.6*	31.4*				23.9*	23.9*
-3.0m t	24.9*	24.9*	24.9*	24.9*	20.6*	20.6*	16.7*	16.7*	13.6*	13.6*				11.9*	11.9*
-10ft lb	55.8*	55.8*	54.4*	54.4*	44.7*	44.7*	36.2*	36.2*	29.3*	29.3*				26.3*	26.3*
-4.5m t			21.7*	21.7*	18.0*	18.0*	14.6*	14.6*						11.8*	11.8*
-15ft lb			47.1*	47.1*	38.9*	38.9*	31.4*	31.4*						25.9*	25.9*
-6.0m t			16.3*	16.3*	13.5*	13.5*								10.8*	10.8*
-20ft lb			34.9*	34.9*	28.6*	28.6*								23.6*	23.6*
-7.5m t															
-25ft lb															

Height Can be slewed through 360° In longitudinal position of undercarriage Max. reach * Limited by hydr. capacity

The load values are quoted in tons (t) / lb x 1,000 at stick end (without bucket), and may be swung 360° on firm and even ground. Adjacent values are valid for the undercarriage when in the longitudinal position. Capacities are valid for 750 mm / 30" wide track pads. Indicated loads are based on ISO 10567 standard and do not exceed 75% of tipping or 87% of hydraulic capacity (indicated via *). Without bucket cylinder, link and lever the lift capacities will increase by 1,150 kg / 2,540 lb. Lifting capacity of the excavator is limited by machine stability and hydraulic capacity.

Determine maximum load lift from load lift chart displayed in the operator's cab or from load lift chart detailed in the operator's manual supplied with the machine.

Stick 3.40 m / 11'2"

Under-carriage	3.0m 10ft		4.5m 15ft		6.0m 20ft		7.5m 25ft		9.0m 30ft		10.5m 35ft		12.0m 40ft		m ft in
12.0m t															
40ft lb															
10.5m t													7.4*	7.4*	8.4
35ft lb													16,6*	16,6*	27'1"
9.0m t									10.6*	10.6*			6.9*	6.9*	9.7
30ft lb									23,4*	23,4*			15,3*	15,3*	31'6"
7.5m t									10.8*	10.8*	8.1*	8.1*	6.6*	6.6*	10.6
25ft lb									23,7*	23,7*			14,6*	14,6*	34'7"
6.0m t		21.8*	21.8*	15.8*	15.8*	13.1*	13.1*	11.5*	11.5*	10.6*	10.6*		6.6*	6.6*	11.2
20ft lb		34,0*	34,0*	28,3*	28,3*	25,0*	25,0*	23,2*	23,2*	23,2*	23,2*		14,5*	14,5*	36'8"
4.5m t				18.9*	18.9*	14.7*	14.7*	12.4*	12.4*	11.1*	11.1*		6.6*	6.6*	11.6
15ft lb				40,6*	40,6*	31,7*	31,7*	26,9*	26,9*	24,0*	24,1*		14,6*	14,6*	38'
3.0m t				21.6*	21.6*	16.2*	16.2*	13.3*	13.3*	10.8*	11.6*		6.9*	6.9*	11.8
10ft lb				46,5*	46,5*	35,0*	35,0*	28,9*	28,9*	23,3*	25,2*		15,2*	15,2*	38'7"
1.5m t				22.6	23.0*	16.7	17.4*	13.1	14.1*	10.5	12.0*		7.3*	7.3*	11.7
5ft lb				48,6	49,6*	36,0	37,5*	28,1	30,5*	22,7	26,1*		16,1*	16,1*	38'6"
0m t				22.3	23.2*	16.3	17.9*	12.7	14.5*	10.3	12.3*		7.9*	7.9*	11.5
0ft lb				47,8	50,1*	35,0	38,8*	27,4	31,5*	22,3	26,6*		17,5*	17,5*	37'8"
-1.5m t			19.2*	19.2*	22.3	22.6*	16.1	17.8*	12.6	14.5*	10.3	12.1*	8.9*	8.9*	11.0
-5ft lb			43,8*	43,8*	47,8	48,9*	34,7	38,6*	27,1	31,5*	22,2	26,1*	19,7*	19,7*	36'2"
-3.0m t	21.9*	21.9*	26.6*	26.6*	21.3*	21.3*	16.2	17.1*	12.6	13.9*			10.5*	10.5*	10.3
-10ft lb	49,2*	49,2*	57,9*	57,9*	46,1*	46,1*	34,9	37,0*	27,2	30,1*			23,3*	23,3*	33'10"
-4.5m t	29.1*	29.1*	23.6*	23.6*	19.1*	19.1*	15.5*	15.5*	12.3*	12.3*			11.5*	11.5*	9.3
-15ft lb	63,2*	63,2*	51,2*	51,2*	41,3*	41,3*	33,3*	33,3*	26,0*	26,0*			25,2*	25,2*	30'5"
-6.0m t			19.0*	19.0*	15.5*	15.5*	12.1*	12.1*					11.0*	11.0*	7.9
-20ft lb			40,6*	40,6*	33,0*	33,0*	25,1*	25,1*					24,0*	24,0*	25'6"
-7.5m t															
-25ft lb															
12.0m t															
40ft lb															
10.5m t													7.4*	7.4*	8.4
35ft lb													16,4*	16,4*	27'1"
9.0m t									10.6*	10.6*			6.8*	6.8*	9.7
30ft lb									23,4*	23,4*			15,2*	15,2*	31'6"
7.5m t									10.9*	10.9*	9.2*	9.2*	6.6*	6.6*	10.6
25ft lb									23,8*	23,8*			14,6*	14,6*	34'7"
6.0m t		22.7*	22.7*	16.2*	16.2*	13.2*	13.2*	11.6*	11.6*	10.7*	10.7*		6.6*	6.6*	11.2
20ft lb		47,8*	47,8*	34,6*	34,6*	28,6*	28,6*	25,2*	25,2*	23,3*	23,3*		14,5*	14,5*	36'8"
4.5m t				19.3*	19.3*	14.9*	14.9*	12.5*	12.5*	11.1*	11.1*		6.7*	6.7*	11.6
15ft lb				41,3*	41,3*	32,0*	32,0*	27,1*	27,1*	24,2*	24,2*		14,7*	14,7*	38'
3.0m t				21.9*	21.9*	16.4*	16.4*	13.4*	13.4*	11.6*	11.6*		6.9*	6.9*	11.8
10ft lb				47,0*	47,0*	35,3*	35,3*	29,1*	29,1*	25,1	25,3*		15,2*	15,2*	38'7"
1.5m t				23.1*	23.1*	17.4*	17.4*	14.0	14.2*	11.3	12.1*		7.3*	7.3*	11.7
5ft lb				49,8*	49,8*	37,7*	37,7*	30,3	30,6*	24,5	26,2*		16,2*	16,2*	38'6"
0m t				23.1*	23.1*	17.5	17.9*	13.7	14.6*	11.1	12.3*		8.0*	8.0*	11.5
0ft lb				50,1*	50,1*	37,9	38,8*	29,6	31,5*	24,1	26,6*		17,7*	17,7*	37'8"
-1.5m t			20.3*	20.3*	22.4	22.4*	17.4	17.8*	13.6	14.5*	11.1	12.0*	9.1*	9.1*	11.0
-5ft lb			46,1*	46,1*	48,7*	48,7*	37,6	38,5*	29,3	31,4*	24,0	26,0*	20,0*	20,0*	36'2"
-3.0m t	22.9*	22.9*	26.3*	26.3*	21.1*	21.1*	17.0*	17.0*	13.7	13.8*			10.8*	10.8*	10.3
-10ft lb	51,3*	51,3*	57,3*	57,3*	45,8*	45,8*	36,7*	36,7*	29,5	29,8*			23,8*	23,8*	33'10"
-4.5m t	28.6*	28.6*	23.2*	23.2*	18.8*	18.8*	15.2*	15.2*	11.9*	11.9*			11.4*	11.4*	9.3
-15ft lb	62,1*	62,1*	50,3*	50,3*	40,7*	40,7*	32,7*	32,7*					25,2*	25,2*	30'5"
-6.0m t			18.3*	18.3*	14.9*	14.9*	11.4*	11.4*					10.8*	10.8*	7.9
-20ft lb			39,2*	39,2*	31,9*	31,9*							23,8*	23,8*	25'6"
-7.5m t															
-25ft lb															

Height Can be slewed through 360° In longitudinal position of undercarriage Max. reach * Limited by hydr. capacity

The load values are quoted in tons (t) / lb x 1,000 at stick end (without bucket), and may be swung 360° on firm and even ground. Adjacent values are valid for the undercarriage when in the longitudinal position. Capacities are valid for 750 mm / 30" wide track pads. Indicated loads are based on ISO 10567 standard and do not exceed 75% of tipping or 87% of hydraulic capacity (indicated via *). Without bucket cylinder, link and lever the lift capacities will increase by 1,150 kg / 2,540 lb. Lifting capacity of the excavator is limited by machine stability and hydraulic capacity.

Determine maximum load lift from load lift chart displayed in the operator's cab or from load lift chart detailed in the operator's manual supplied with the machine.

Lift capacities

with mono boom 8.20 m / 26'11", counterweight 14.5 t / 31,970 lb and track pads 750 mm / 30"

Stick 4.20 m / 13'9"

Under-carriage	3.0m 10ft		4.5m 15ft		6.0m 20ft		7.5m 25ft		9.0m 30ft		10.5m 35ft		12.0m 40ft		m ft in
12.0m t															
40ft lb															
10.5m t									8.7*	8.7*				5.4*	9.5
35ft lb									15.3*	15.3*				12.1*	30.7"
9.0m t									9.4*	9.4*				5.0*	10.6
30ft lb									20.6*	20.6*	6.1*	6.1*		11.2*	34.6"
7.5m t									9.8*	9.8*	9.4*	9.4*		4.9*	11.4
25ft lb									21.3*	21.3*	20.6*	20.6*		10.8*	37.4"
6.0m t							11.8*	11.8*	10.5*	10.5*	9.7*	9.7*		4.8*	12.0
20ft lb							25.5*	25.5*	22.8*	22.8*	21.2*	21.2*		10.6*	39.4"
4.5m t			25.0*	25.0*	17.0*	17.0*	13.5*	13.5*	11.5*	11.5*	10.3*	10.3*	8.6*	8.6*	12.4
15ft lb			53.0*	53.0*	36.5*	36.5*	29.0*	29.0*	24.9*	24.9*	22.4*	22.4*	14.6*	14.6*	40.6"
3.0m t					20.0*	20.0*	15.1*	15.1*	12.5*	12.5*	10.9*	10.9*	8.8*	8.8*	12.5
10ft lb					42.9*	42.9*	32.7*	32.7*	27.1*	27.1*	23.3*	23.3*	18.9*	19.2*	41"
1.5m t					22.0*	22.0*	16.5*	16.5*	13.1*	13.4*	10.5*	11.5*	8.6*	10.1*	12.5
5ft lb					47.4*	47.4*	35.7*	35.7*	28.1*	29.1*	22.6*	24.9*	18.5*	20.0*	40.11"
0m t			12.6*	12.6*	22.2*	22.8*	16.2*	17.4*	12.6*	14.1*	10.2*	11.9*	8.4*	9.5*	12.3
0ft lb			29.1*	29.1*	47.7*	49.4*	35.0*	37.7*	27.2*	30.5*	22.0*	25.7*	14.8*	14.8*	40.2"
-1.5m t	12.3*	12.3*	18.8*	18.8*	22.0*	22.8*	15.9*	17.7*	12.4*	14.3*	10.1*	12.0*		6.4*	11.8
-5ft lb	27.5*	27.5*	42.7*	42.7*	47.2*	49.3*	34.3*	38.3*	26.7*	31.0*	21.6*	25.9*		14.1*	38.10"
-3.0m t	18.9*	18.9*	25.8*	25.8*	22.0*	22.0*	15.9*	17.3*	12.3*	14.1*	10.1*	11.6*		7.4*	11.2
-10ft lb	42.5*	42.5*	58.7*	58.7*	47.4*	47.6*	34.2*	37.5*	26.6*	30.4*	21.7*	24.9*		16.4*	36.7"
-4.5m t	25.9*	25.9*	26.1*	26.1*	20.3*	20.3*	16.1*	16.2*	12.5*	13.1*				9.1*	10.3
-15ft lb	58.3*	58.3*	56.5*	56.5*	43.9*	43.9*	34.6*	35.0*	27.0*	28.1*				20.4*	33.6"
-6.0m t	29.1*	29.1*	22.2*	22.2*	17.6*	17.6*	14.0*	14.0*						10.5*	9.0
-20ft lb	62.5*	62.5*	47.6*	47.6*	37.6*	37.6*	29.8*	29.8*						23.2*	29.2"
-7.5m t			15.9*	15.9*	12.6*	12.6*								9.7*	7.2
-25ft lb			33.3*	33.3*	26.0*	26.0*								21.0*	22.11"
12.0m t															
40ft lb															
10.5m t									9.4*	9.4*				5.4*	9.5
35ft lb									17.3*	17.3*				11.9*	30.7"
9.0m t									9.4*	9.4*	7.0*	7.0*		5.0*	10.6
30ft lb									20.6*	20.6*				11.1*	34.6"
7.5m t									9.8*	9.8*	9.4*	9.4*		4.9*	11.4
25ft lb									21.4*	21.4*	20.6*	20.6*		10.7*	37.4"
6.0m t							12.0*	12.0*	10.6*	10.6*	9.8*	9.8*	5.4*	5.4*	12.0
20ft lb							25.8*	25.8*	23.0*	23.0*	21.3*	21.3*		10.6*	39.4"
4.5m t					17.3*	17.3*	13.7*	13.7*	11.6*	11.6*	10.3*	10.3*	8.9*	8.9*	12.4
15ft lb			54.6*	54.6*	37.2*	37.2*	29.4*	29.4*	25.1*	25.1*	22.5*	22.5*	15.2*	15.2*	40.6"
3.0m t					20.2*	20.2*	15.3*	15.3*	12.6*	12.6*	11.0*	11.0*	9.5*	9.9*	12.5
10ft lb					43.5*	43.5*	33.1*	33.1*	27.3*	27.3*	23.8*	23.8*	19.5*	19.5*	41"
1.5m t					22.1*	22.1*	16.7*	16.7*	13.5*	13.5*	11.3*	11.5*	9.3*	10.2*	12.5
5ft lb					47.7*	47.7*	36.0*	36.0*	29.2*	29.2*	24.3*	25.0*	19.8*	19.8*	40.11"
0m t			13.3*	13.3*	22.9*	22.9*	17.5*	17.5*	13.6*	14.1*	11.0*	11.9*	9.1*	9.1*	12.3
0ft lb			30.4*	30.4*	49.5*	49.5*	37.8*	37.8*	29.4*	30.6*	23.7*	25.8*	13.8*	13.8*	40.2"
-1.5m t	13.1*	13.1*	19.5*	19.5*	22.7*	22.7*	17.2*	17.7*	13.4*	14.3*	10.9*	12.0*		6.5*	11.8
-5ft lb	29.1*	29.1*	44.2*	44.2*	49.2*	49.2*	37.2*	38.3*	28.9*	31.0*	23.4*	25.9*		14.3*	38.10"
-3.0m t	19.7*	19.7*	26.7*	26.7*	21.8*	21.8*	17.2*	17.3*	13.4*	14.0*	10.9*	11.5*		7.6*	11.2
-10ft lb	44.0*	44.0*	60.5*	60.5*	47.3*	47.3*	37.1*	37.3*	28.8*	30.3*	23.6*	24.7*		16.7*	36.7"
-4.5m t	26.8*	26.8*	25.7*	25.7*	20.1*	20.1*	16.0*	16.0*	12.9*	12.9*				9.4*	10.3
-15ft lb	60.1*	60.1*	55.8*	55.8*	43.4*	43.4*	34.6*	34.6*	27.7*	27.7*				20.9*	33.6"
-6.0m t	28.3*	28.3*	21.6*	21.6*	17.1*	17.1*	13.6*	13.6*						10.5*	9.0
-20ft lb	60.7*	60.7*	46.5*	46.5*	36.8*	36.8*	29.0*	29.0*						23.1*	29.2"
-7.5m t					11.7*	11.7*								9.5*	7.2
-25ft lb					24.2*	24.2*								20.5*	22.11"

Height Can be slewed through 360° In longitudinal position of undercarriage Max. reach * Limited by hydr. capacity

The load values are quoted in tons (t) / lb x 1,000 at stick end (without bucket), and may be swung 360° on firm and even ground. Adjacent values are valid for the undercarriage when in the longitudinal position. Capacities are valid for 750 mm / 30" wide track pads. Indicated loads are based on ISO 10567 standard and do not exceed 75% of tipping or 87% of hydraulic capacity (indicated by *). Without bucket cylinder, link and lever the lift capacities will increase by 1.150 kg / 2,540 lb. Lifting capacity of the excavator is limited by machine stability and hydraulic capacity.

Determine maximum load lift from load lift chart displayed in the operator's cab or from load lift chart detailed in the operator's manual supplied with the machine.

Stick 5.00 m / 16'5"

Under-carriage	3.0m 10ft		4.5m 15ft		6.0m 20ft		7.5m 25ft		9.0m 30ft		10.5m 35ft		12.0m 40ft		m ft in		
12.0m t																	
40ft lb																	
10.5m t														4.2*	4.2*	10.5	
35ft lb														9.3*	9.3*	33'11"	
9.0m t											8.4*	8.4*		3.9*	3.9*	11.5	
30ft lb											17.2*	17.2*		8.7*	8.7*	37'5"	
7.5m t											8.6*	8.6*	5.7*	5.7*		12.3	
25ft lb											18.8*	18.8*	8.7*	8.7*	8.4*	40'	
6.0m t									9.7*	9.7*	9.0*	9.0*	8.5*	8.5*	3.8*	3.8*	12.8
20ft lb									21.0*	21.0*	19.7*	19.7*	16.6*	16.6*	8.3*	8.3*	41'11"
4.5m t					15.2*	15.2*	12.4*	12.4*	10.7*	10.7*	9.6*	9.6*	9.0*	9.0*	3.8*	3.8*	13.1
15ft lb					32.7*	32.7*	26.7*	26.7*	23.2*	23.2*	21.0*	21.0*	19.6*	19.6*	8.4*	8.4*	43'
3.0m t			18.3*	18.3*	18.4*	18.4*	14.2*	14.2*	11.8*	11.8*	10.4*	10.4*	9.0*	9.4*	3.9*	3.9*	13.3
10ft lb			45.2*	45.2*	39.5*	39.5*	30.6*	30.6*	25.6*	25.6*	22.5*	22.5*	19.2	20.5*	8.6*	8.6*	43'6"
1.5m t			12.7*	12.7*	20.9*	20.9*	15.8*	15.8*	12.9*	12.9*	10.6	11.0*	8.7	9.8*	4.1*	4.1*	13.2
5ft lb			29.8*	29.8*	45.0*	45.0*	34.1*	34.1*	27.9*	27.9*	22.9	23.9*	18.7	21.3*	9.1*	9.1*	43'5"
0m t			14.5*	14.5*	22.3*	22.3*	16.5	16.9*	12.8	13.7*	10.3	11.6*	8.5	10.1*	4.4*	4.4*	13.0
0ft lb			33.1*	33.1*	48.2*	48.2*	35.4	36.6*	27.5	29.6*	22.1	25.1*	18.2	21.9*	9.8*	9.8*	42'8"
-1.5m t	11.9*	11.9*	18.3*	18.3*	22.0	22.8*	16.0	17.5*	12.4	14.2*	10.1	11.9*	8.4	10.2*	4.9*	4.9*	12.6
-5ft lb	26.6*	26.6*	41.6*	41.6*	47.3	49.4*	34.4	37.9*	26.8	30.7*	21.6	25.7*	18.0	21.9*	10.8*	10.8*	41'5"
-3.0m t	16.8*	16.8*	23.5*	23.5*	21.9	22.5*	15.8	17.5*	12.3	14.2*	10.0	11.8*	6.0*	6.0*	5.6*	5.6*	12.0
-10ft lb	37.7*	37.7*	53.3*	53.3*	47.0	48.7*	34.0	37.9*	26.4	30.7*	21.5	25.5*			12.4*	12.4*	39'5"
-4.5m t	22.3*	22.3*	28.2*	28.2*	21.4*	21.4*	15.9	16.9*	12.3	13.7*	10.1	11.1*			6.7*	6.7*	11.2
-15ft lb	50.1*	50.1*	61.0*	61.0*	46.2*	46.2*	34.2	36.4*	26.6	29.5*	21.7	23.8*			14.9*	14.9*	36'6"
-6.0m t	28.7*	28.7*	24.9*	24.9*	19.2*	19.2*	15.3*	15.3*	12.2*	12.2*					8.7*	8.7*	10.0
-20ft lb	64.8*	64.8*	53.7*	53.7*	41.4*	41.4*	32.8*	32.8*	25.9*	25.9*					19.5*	19.5*	32'7"
-7.5m t	26.7*	26.7*	19.9*	19.9*	15.6*	15.6*	12.1*	12.1*							9.8*	9.8*	8.4
-25ft lb	56.5*	56.5*	42.3*	42.3*	33.0*	33.0*	25.3*	25.3*							21.5*	21.5*	27'2"
12.0m t															4.6*	4.6*	
40ft lb																	
10.5m t											4.8*	4.8*			4.2*	4.2*	10.5
35ft lb											8.4*	8.4*			9.2*	9.2*	33'11"
9.0m t											17.9*	17.9*			3.9*	3.9*	11.5
30ft lb											18.8*	18.8*	6.1*	6.1*	8.7*	8.7*	37'5"
7.5m t											8.6*	8.6*	6.1*	6.1*	3.8*	3.8*	12.3
25ft lb											18.8*	18.8*	9.8*	9.8*	8.4*	8.4*	40'
6.0m t									9.8*	9.8*	9.1*	9.1*	8.7*	8.7*	3.8*	3.8*	12.8
20ft lb									21.2*	21.2*	19.8*	19.8*	17.1*	17.1*	8.3*	8.3*	41'11"
4.5m t			21.8*	21.8*	15.6*	15.6*	12.6*	12.6*	10.8*	10.8*	9.7*	9.7*	9.0*	9.0*	3.8*	3.8*	13.1
15ft lb			46.2*	46.2*	33.4*	33.4*	27.1*	27.1*	23.5*	23.5*	21.1*	21.1*	19.7*	19.7*	8.4*	8.4*	43'
3.0m t			16.8*	16.8*	18.7*	18.7*	14.4*	14.4*	12.0*	12.0*	10.4*	10.4*	9.4*	9.4*	3.9*	3.9*	13.3
10ft lb			41.4*	41.4*	40.1*	40.1*	31.0*	31.0*	25.9*	25.9*	22.7*	22.7*	20.6*	20.6*	8.7*	8.7*	43'6"
1.5m t			12.7*	12.7*	21.1*	21.1*	15.9*	15.9*	13.0*	13.0*	11.1*	11.1*	9.4	9.8*	4.2*	4.2*	13.2
5ft lb			29.7*	29.7*	45.4*	45.4*	34.4*	34.4*	28.1*	28.1*	24.1*	24.1*	20.2	21.4*	9.2*	9.2*	43'5"
0m t			14.8*	14.8*	22.4*	22.4*	17.0*	17.0*	13.8	13.8*	11.1	11.6*	9.2	10.1*	4.5*	4.5*	13.0
0ft lb			33.8*	33.8*	48.4*	48.4*	36.8*	36.8*	29.7	29.8*	23.9	25.2*	19.7	22.0*	9.9*	9.9*	42'8"
-1.5m t	12.4*	12.4*	18.9*	18.9*	22.8*	22.8*	17.3	17.6*	13.4	14.2*	10.9	11.9*	9.0	10.2*	5.0*	5.0*	12.6
-5ft lb	27.7*	27.7*	42.7*	42.7*	49.4*	49.4*	37.3	38.0*	29.0	30.7*	23.4	25.8*	19.5	20.9*	11.0*	11.0*	41'5"
-3.0m t	17.4*	17.4*	24.2*	24.2*	22.4*	22.4*	17.1	17.5*	13.3	14.2*	10.8	11.8*			5.7*	5.7*	12.0
-10ft lb	38.9*	38.9*	54.6*	54.6*	48.5*	48.5*	36.9	37.9*	28.7	30.7*	23.3	25.4*			12.6*	12.6*	39'5"
-4.5m t	22.9*	22.9*	27.9*	27.9*	21.2*	21.2*	16.7*	16.7*	13.4	13.6*	10.9	11.0*			6.9*	6.9*	11.2
-15ft lb	51.5*	51.5*	60.4*	60.4*	45.8*	45.8*	36.2*	36.2*	28.8	29.2*	23.5*	23.5*			15.3*	15.3*	36'6"
-6.0m t	29.6*	29.6*	24.5*	24.5*	18.9*	18.9*	15.0*	15.0*	11.9*	11.9*					9.0*	9.0*	10.0
-20ft lb	66.6*	66.6*	52.8*	52.8*	40.7*	40.7*	32.3*	32.3*	25.4*	25.4*					20.2*	20.2*	32'7"
-7.5m t	25.6*	25.6*	19.2*	19.2*	15.0*	15.0*	11.6*	11.6*							9.7*	9.7*	8.4
-25ft lb	54.2*	54.2*	40.8*	40.8*	31.8*	31.8*	24.0*	24.0*							21.3*	21.3*	27'2"

Height Can be slewed through 360° In longitudinal position of undercarriage Max. reach * Limited by hydr. capacity

The load values are quoted in tons (t) / lb x 1,000 at stick end (without bucket), and may be swung 360° on firm and even ground. Adjacent values are valid for the undercarriage when in the longitudinal position. Capacities are valid for 750 mm / 30" wide track pads. Indicated loads are based on ISO 10567 standard and do not exceed 75% of tipping or 87% of hydraulic capacity (indicated with *). Without bucket cylinder, link and lever the lift capacities will increase by 1,150 kg / 2,540 lb / 825 kg¹⁾ / 1,820 lb¹⁾. Lifting capacity of the excavator is limited by machine stability and hydraulic capacity.

Determine maximum load lift from load lift chart displayed in the operator's cab or from load lift chart detailed in the operator's manual supplied with the machine.

¹⁾ for stick 5.00 m / 16'5"

Stick 3.40 m / 11'2"

Under-carriage	3.0m 10ft		4.5m 15ft		6.0m 20ft		7.5m 25ft		9.0m 30ft		10.5m 35ft		12.0m 40ft		13.5m 45ft		15.0m 50ft		m ft in	
12.0m t																				
40ft lb																				
10.5m t											7.2*	7.2*						6.7*	6.7*	10.9
35ft lb											16.1*	16.1*						14.9*	14.9*	35'2"
9.0m t											7.2*	7.2*						6.4*	6.4*	11.9
30ft lb											15.9*	15.9*						14.2*	14.2*	38'8"
7.5m t									8.3*	8.3*	7.6*	7.6*		7.2*	7.2*			6.3*	6.3*	12.6
25ft lb									18.1*	18.1*	16.6*	16.6*		15.9*	15.9*			13.9*	13.9*	41'2"
6.0m t							11.3*	11.3*	9.3*	9.3*	8.2*	8.2*		7.5*	7.5*			6.3*	6.3*	13.1
20ft lb							24.2*	24.2*	20.0*	20.0*	17.7*	17.7*		16.4*	16.4*			13.8*	13.8*	43'
4.5m t							13.1*	13.1*	10.3*	10.3*	8.8*	8.8*		7.9*	7.9*			6.4*	6.4*	13.4
15ft lb							28.1*	28.1*	22.2*	22.2*	19.1*	19.1*		17.2*	17.2*			14.0*	14.0*	44'1"
3.0m t							14.7*	14.7*	11.3*	11.3*	9.5*	9.5*		8.0*	8.3*	6.7	7.7*	6.6*	6.6*	13.6
10ft lb							31.5*	31.5*	24.4*	24.4*	20.5*	20.5*		17.3*	18.1*			14.5*	14.5*	44'7"
1.5m t							14.3	15.6*	11.4	12.1*	9.3	10.0*		7.8	8.7*	6.5	7.9*	6.5	6.9*	13.6
5ft lb							30.9	33.5*	24.6	26.1*	20.1	21.7*		16.7	19.0*			14.3	15.2*	44'6"
0m t							14.2	15.9*	11.1	12.6*	9.1	10.5*		7.6	9.1*			6.6	7.4*	13.4
0ft lb							30.5	34.3*	23.9	27.3*	19.5	22.7*		16.3	19.6*			14.4	16.2*	43'10"
-1.5m t							14.2	15.9*	11.0	12.8*	8.9	10.7*		7.5	9.2*			6.8	8.1*	13.0
-5ft lb							30.5	34.3*	23.7	27.8*	19.3	23.2*		16.2	20.0*			15.0	17.8*	42'6"
-3.0m t									19.0*	19.0*	14.3	15.6*		11.0	12.8*			7.3	8.7*	12.4
-10ft lb									41.3*	41.3*	30.8	33.7*		23.8	27.7*			16.1	19.3*	40'7"
-4.5m t									18.1*	18.1*	14.6	14.9*		11.2	12.4*			8.2	9.1*	11.6
-15ft lb									39.4*	39.4*	31.4	32.4*		24.2	26.8*			18.1	20.0*	37'10"
-6.0m t									16.7*	16.7*	13.9*	13.9*		11.5*	11.5*			9.3*	9.3*	10.5
-20ft lb									37.4*	37.4*	29.9*	29.9*		24.7*	24.7*			20.6*	20.6*	34'
-7.5m t									17.4*	17.4*	14.4*	14.4*		11.9*	11.9*			9.4*	9.4*	9.0
-25ft lb									37.4*	37.4*	30.9*	30.9*		25.4*	25.4*			20.7*	20.7*	28'11"
-9.0m t									10.2*	10.2*								8.8*	8.8*	6.8
-30ft lb																				
-10.5m t																				
-35ft lb																				
12.0m t																				
40ft lb																				
10.5m t												7.2*	7.2*							10.9
35ft lb												16.0*	16.0*							35'2"
9.0m t												7.3*	7.3*							11.9
30ft lb												15.9*	15.9*							38'8"
7.5m t												8.4*	8.4*							12.6
25ft lb												18.2*	18.2*							41'2"
6.0m t												11.5*	11.5*							13.1
20ft lb												24.6*	24.6*							43'
4.5m t												13.3*	13.3*							13.4
15ft lb												28.5*	28.5*							44'1"
3.0m t												14.8*	14.8*							13.6
10ft lb												31.8*	31.8*							44'7"
1.5m t												15.6	15.6*							13.6
5ft lb												33.6*	33.6*							44'6"
0m t												15.5	15.9*							13.4
0ft lb												33.4	34.3*							43'10"
-1.5m t												15.5	15.8*							13.0
-5ft lb												31.3*	31.3*							42'6"
-3.0m t												18.9*	18.9*							12.4
-10ft lb												41.1*	41.1*							40'7"
-4.5m t												18.0*	18.0*							11.6
-15ft lb												39.1*	39.1*							37'10"
-6.0m t												24.3*	24.3*							10.5
-20ft lb												53.0*	53.0*							34'
-7.5m t												17.0*	17.0*							9.0
-25ft lb												36.5*	36.5*							28'11"
-9.0m t																				6.8
-30ft lb																				
-10.5m t																				
-35ft lb																				

Height Can be slewed through 360° In longitudinal position of undercarriage Max. reach * Limited by hydr. capacity

The load values are quoted in tons (t) / lb x 1,000 at stick end (without bucket), and may be swung 360° on firm and even ground. Adjacent values are valid for the undercarriage when in the longitudinal position. Capacities are valid for 750 mm / 30" wide track pads. Indicated loads are based on ISO 10567 standard and do not exceed 75% of tipping or 87% of hydraulic capacity (indicated via *). Without bucket cylinder, link and lever the lift capacities will increase by 1,150 kg / 2,540 lb. Lifting capacity of the excavator is limited by machine stability and hydraulic capacity. Determine maximum load lift from load lift chart displayed in the operator's cab or from load lift chart detailed in the operator's manual supplied with the machine.

Lift capacities

with mono boom 10.00 m / 32'10", counterweight 14.5 t / 31,970 lb and track pads 750 mm / 30"

Stick 4.20 m / 13'9"

Under-carriage	3.0m 10ft		4.5m 15ft		6.0m 20ft		7.5m 25ft		9.0m 30ft		10.5m 35ft		12.0m 40ft		13.5m 45ft		15.0m 50ft		m ft in			
12.0m t																				5.3*	5.3*	10.6
40ft lb																						
10.5m t																				4.9*	4.9*	11.8
35ft lb																				10.9*	10.9*	38'4"
9.0m t													6.3*	6.3*						4.7*	4.7*	12.7
30ft lb													14.0*	14.0*						10.4*	10.4*	41'6"
7.5m t												6.9*	6.9*	6.5*	6.5*					4.6*	4.6*	13.4
25ft lb												14.9*	14.9*	14.2*	14.2*					10.2*	10.2*	43'11"
6.0m t					13.3*	13.3*	10.1*	10.1*	8.4*	8.4*	7.4*	7.4*	6.8*	6.8*	6.6*	6.6*				4.6*	4.6*	13.9
20ft lb					28.3*	28.3*	21.6*	21.6*	18.2*	18.2*	16.1*	16.1*	14.9*	14.9*	14.0*	14.0*				10.1*	10.1*	45'6"
4.5m t							11.9*	11.9*	9.5*	9.5*	8.1*	8.1*	7.3*	7.3*	6.8*	6.8*				4.7*	4.7*	14.2
15ft lb							25.4*	25.4*	20.4*	20.4*	17.6*	17.6*	15.8*	15.8*	14.6*	14.9*				10.2*	10.2*	46'7"
3.0m t							13.5*	13.5*	10.5*	10.5*	8.8*	8.8*	7.8*	7.8*	6.6*	7.1*				4.8*	4.8*	14.3
10ft lb							29.0*	29.0*	22.7*	22.7*	19.1*	19.1*	16.8*	16.8*	14.2*	15.5*				10.5*	10.5*	47'
1.5m t							14.5	14.7*	11.4*	11.4*	9.3	9.5*	7.7	8.2*	6.4	7.4*				5.0*	5.0*	14.3
5ft lb							31.2	31.6*	24.7*	24.7*	20.0	20.5*	16.5	17.8*	13.7	16.1*				11.0*	11.0*	47'
0m t							14.1	15.3*	11.0	12.1*	9.0	10.0*	7.4	8.6*	6.3	7.7*				5.3*	5.3*	14.1
0ft lb							30.3	33.1*	23.8	26.1*	19.3	21.6*	16.0	18.7*	13.5	16.6*				11.8*	11.8*	46'4"
-1.5m t					14.6*	14.6*	13.9	15.6*	10.8	12.5*	8.8	10.4*	7.3	8.9*	6.2	7.8*				5.8*	5.8*	13.8
-5ft lb					34.0*	34.0*	29.9	33.7*	23.3	27.0*	18.9	22.4*	15.7	19.2*	13.4	14.1*				12.9*	12.9*	45'1"
-3.0m t			14.0*	14.0*	19.6*	19.6*	14.0	15.5*	10.8	12.6*	8.7	10.5*	7.3	9.0*						6.4	6.5*	13.2
-10ft lb			31.9*	31.9*	42.4	42.5*	30.0	33.6*	23.2	27.2*	18.7	22.7*	15.7	19.4*						14.2	14.4*	43'4"
-4.5m t	17.3*	17.3*	20.6*	20.6*	18.8*	18.8*	14.2	15.1*	10.9	12.4*	8.8	10.4*	7.4	8.7*						7.1	7.5*	12.4
-15ft lb	38.8*	38.8*	46.8*	46.8*	40.8*	40.8*	30.5	32.7*	23.4	26.8*	18.9	22.4*	16.0	18.7*						15.7	16.8*	40'8"
-6.0m t	23.2*	23.2*	22.2*	22.2*	17.6*	17.6*	14.3*	14.3*	11.2	11.8*	9.1	9.8*								8.2	8.5*	11.4
-20ft lb	52.3*	52.3*	48.2*	48.2*	38.2*	38.2*	30.9*	30.9*	24.0	25.4*	19.6	20.9*								18.3	18.9*	37'2"
-7.5m t	26.0*	26.0*	19.7*	19.7*	15.8*	15.8*	12.9*	12.9*	10.5*	10.5*										8.8*	8.8*	10.1
-25ft lb	55.9*	55.9*	42.4*	42.4*	33.9*	33.9*	27.6*	27.6*	22.3*	22.3*										19.4*	19.4*	32'7"
-9.0m t			15.7*	15.7*	12.7*	12.7*	10.1*	10.1*												8.7*	8.7*	8.2
-30ft lb			33.1*	33.1*	26.7*	26.7*	20.9*	20.9*												19.2*	19.2*	26'2"
-10.5m t																						
-35ft lb																						
12.0m t																				5.2*	5.2*	10.6
40ft lb																				11.6*	11.6*	
10.5m t																				4.9*	4.9*	11.8
35ft lb																				10.8*	10.8*	38'4"
9.0m t													6.3*	6.3*						4.7*	4.7*	12.7
30ft lb													14.1*	14.1*	14.0*	14.0*				10.3*	10.3*	41'6"
7.5m t													6.9*	6.9*	6.5*	6.5*				4.6*	4.6*	13.4
25ft lb													15.0*	15.0*	14.3*	14.3*				10.1*	10.1*	43'11"
6.0m t					13.8*	13.8*	10.3*	10.3*	8.5*	8.5*	7.5*	7.5*	6.9*	6.9*	6.6*	6.6*				4.6*	4.6*	13.9
20ft lb					29.0*	29.0*	22.0*	22.0*	18.4*	18.4*	16.3*	16.3*	15.0*	15.0*	14.5*	14.5*				10.1*	10.1*	45'6"
4.5m t							12.1*	12.1*	9.6*	9.6*	8.2*	8.2*	7.3*	7.3*	6.8*	6.8*				4.7*	4.7*	14.2
15ft lb							25.8*	25.8*	20.7*	20.7*	17.7*	17.7*	15.9*	15.9*	14.9*	14.9*				10.3*	10.3*	46'7"
3.0m t							13.7*	13.7*	10.6*	10.6*	8.9*	8.9*	7.8*	7.8*	7.1*	7.1*				4.8*	4.8*	14.3
10ft lb							29.3*	29.3*	22.9*	22.9*	19.2*	19.2*	16.9*	16.9*	15.4	15.5*				10.6*	10.6*	47'
1.5m t							14.8*	14.8*	11.5*	11.5*	9.5*	9.5*	8.3*	8.3*	7.0	7.4*				5.0*	5.0*	14.3
5ft lb							31.8*	31.8*	24.8*	24.8*	20.6*	20.6*	17.9*	17.9*	15.0	16.2*				11.1*	11.1*	47'
0m t							15.3	15.4*	12.0	12.1*	9.8	10.1*	8.1	8.6*	6.9	7.7*				5.4*	5.4*	14.1
0ft lb							33.1	33.2*	25.9	26.2*	21.1	21.7*	17.5	18.7*	14.8	16.7*				11.9*	11.9*	46'4"
-1.5m t					15.3*	15.3*	15.2	15.6*	11.8	12.5*	9.6	10.4*	8.0	8.9*	6.8	7.8*				5.9*	5.9*	13.8
-5ft lb					35.4*	35.4*	32.8	33.8*	25.5	27.0*	20.7	22.5*	17.2	19.3*						13.0*	13.0*	45'1"
-3.0m t			14.8*	14.8*	19.5*	19.5*	15.3	15.5*	11.8	12.6*	9.5	10.5*	8.0	8.9*						6.6*	6.6*	13.2
-10ft lb			33.4*	33.4*	42.4*	42.4*	32.9	33.6*	25.4	27.2*	20.6	22.7*	17.2	19.3*						14.6*	14.6*	43'4"
-4.5m t	17.9*	17.9*	21.4*	21.4*	18.7*	18.7*	15.1*	15.1*	11.9	12.3*	9.6	10.3*	8.1	8.7*						7.7*	7.7*	12.4
-15ft lb	40.1*	40.1*	48.3*	48.3*	40.6*	40.6*	32.6*	32.6*	25.7	26.7*	20.8	22.3*	17.6	18.6*						17.1*	17.1*	40'8"
-6.0m t	23.9*	23.9*	22.0*	22.0*	17.5*	17.5*	14.2*	14.2*	11.7*	11.7*	9.7*	9.7*								8.6*	8.6*	11.4
-20ft lb	53.8*	53.8*	47.7*	47.7*	37.8*	37.8*	30.7*	30.7*	25.2*	25.2*	20.7*	20.7*								18.9*	18.9*	37'2"
-7.5m t	25.5*	25.5*	19.3*	19.3*	15.5*	15.5*	12.7*	12.7*	10.3*	10.3*										8.8*	8.8*	10.1
-25ft lb	54.8*	54.8*	41.6*	41.6*	33.4*	33.4*	27.1*	27.1*	21.8*	21.8*										19.4*	19.4*	32'7"
-9.0m t			15.1*	15.1*	12.2*	12.2*	9.6*	9.6*												8.7*	8.7*	8.2
-30ft lb			31.9*	31.9*	25.7*	25.7*	19.6*	19.6*												19.0*	19.0*	26'2"
-10.5m t																						
-35ft lb																						

Height Can be slewed through 360° In longitudinal position of undercarriage Max. reach * Limited by hydr. capacity

The load values are quoted in tons (t) / lb x 1,000 at stick end (without bucket), and may be swung 360° on firm and even ground. Adjacent values are valid for the undercarriage when in the longitudinal position. Capacities are valid for 750 mm / 30" wide track pads. Indicated loads are based on ISO 10567 standard and do not exceed 75% of tipping or 87% of hydraulic capacity (indicated by *). Without bucket cylinder, link and lever the lift capacities will increase by 1,150 kg / 2,540 lb. Lifting capacity of the excavator is limited by machine stability and hydraulic capacity. Determine maximum load lift from load lift chart displayed in the operator's cab or from load lift chart detailed in the operator's manual supplied with the machine.

Stick 5.00 m / 16'5"

Under-carriage	3.0m 10ft		4.5m 15ft		6.0m 20ft		7.5m 25ft		9.0m 30ft		10.5m 35ft		12.0m 40ft		13.5m 45ft		15.0m 50ft		m ft in			
12.0m t																				4.1*	4.1*	11.6
40ft lb																				9.0*	9.0*	37'6"
10.5m t													5.7*	5.7*						3.8*	3.8*	12.7
35ft lb													12.7*	12.7*						8.4*	8.4*	41'5"
9.0m t													5.7*	5.7*	4.3*	4.3*				3.7*	3.7*	13.6
30ft lb													12.6*	12.6*						8.1*	8.1*	44'4"
7.5m t													6.0*	6.0*	5.9*	5.9*				3.6*	3.6*	14.2
25ft lb													13.1*	13.1*	12.9*	12.9*				7.9*	7.9*	46'6"
6.0m t													6.9*	6.9*	6.4*	6.4*	6.1*	6.1*		3.6*	3.6*	14.7
20ft lb													15.0*	15.0*	13.9*	13.9*	13.3*	13.3*		7.9*	7.9*	48'1"
4.5m t					14.8*	14.8*	10.8*	10.8*	8.8*	8.8*	7.6*	7.6*	6.8*	6.8*	6.4*	6.4*				3.6*	3.6*	15.0
15ft lb					31.4*	31.4*	23.2*	23.2*	19.0*	19.0*	16.5*	16.5*	14.9*	14.9*	13.9*	13.9*				8.0*	8.0*	49'1"
3.0m t							12.5*	12.5*	9.9*	9.9*	8.4*	8.4*	7.4*	7.4*	6.7*	6.7*	4.7*	4.7*		3.7*	3.7*	15.1
10ft lb							26.9*	26.9*	21.4*	21.4*	18.1*	18.1*	16.0*	16.0*	14.4*	14.6*				8.2*	8.2*	49'6"
1.5m t							13.9*	13.9*	10.9*	10.9*	9.1*	9.1*	7.8*	7.9*	6.5*	7.1*	4.6*	4.6*		3.9*	3.9*	15.1
5ft lb							30.0*	30.0*	23.5*	23.5*	19.6*	19.6*	16.8*	17.1*	13.9*	15.4*				8.6*	8.6*	49'5"
0m t					11.8*	11.8*	14.2	14.8*	11.2	11.7*	9.1	9.7*	7.5	8.3*	6.3	7.4*				4.1*	4.1*	14.9
0ft lb					27.6*	27.6*	30.6	32.0*	24.1	25.2*	19.5	20.9*	16.1	18.0*	13.5	16.0*				9.1*	9.1*	48'10"
-1.5m t			8.6*	8.6*	15.4*	15.4*	13.9	15.4*	10.8	12.2*	8.8	10.1*	7.3	8.7*	6.2	7.6*				4.5*	4.5*	14.5
-5ft lb			19.6*	19.6*	35.4*	35.4*	29.9	33.2*	23.3	26.4*	18.9	21.9*	15.7	18.8*	13.2	16.5*				9.9*	9.9*	47'8"
-3.0m t	10.7*	10.7*	13.5*	13.5*	19.4	19.9*	13.8	15.5*	10.7	12.5*	8.7	10.4*	7.2	8.9*	6.1	7.7*				5.0*	5.0*	14.0
-10ft lb	24.0*	24.0*	30.5*	30.5*	41.6	43.2*	29.7	33.6*	23.0	27.0*	18.6	22.4*	15.5	19.2*	13.2	16.6*				11.0*	11.0*	46'
-4.5m t	15.1*	15.1*	18.4*	18.4*	19.4*	19.4*	13.9	15.3*	10.7	12.5*	8.7	10.4*	7.2	8.8*						5.7*	5.7*	13.3
-15ft lb	34.0*	34.0*	41.6*	41.6*	42.1*	42.1*	30.0	33.2*	23.1	27.0*	18.6	22.5*	15.6	19.1*						12.6*	12.6*	43'7"
-6.0m t	19.8*	19.8*	24.0*	24.0*	18.5*	18.5*	14.2	14.8*	10.9	12.1*	8.8	10.1*	7.4	8.4*						6.8*	6.8*	12.4
-20ft lb	44.6*	44.6*	52.0*	52.0*	40.0*	40.0*	30.6	31.9*	23.5	26.1*	19.0	21.7*	16.1	17.9*						15.2*	15.2*	40'5"
-7.5m t	25.2*	25.2*	21.8*	21.8*	17.0*	17.0*	13.7*	13.7*	11.2*	11.2*	9.2*	9.2*								8.2*	8.2*	11.1
-25ft lb	56.8*	56.8*	47.0*	47.0*	36.6*	36.6*	29.5*	29.5*	24.1*	24.1*	19.4*	19.4*								18.2*	18.2*	36'2"
-9.0m t	25.1*	25.1*	18.5*	18.5*	14.6*	14.6*	11.8*	11.8*	9.3*	9.3*										8.4*	8.4*	9.5
-30ft lb	53.3*	53.3*	39.4*	39.4*	31.1*	31.1*	24.9*	24.9*	19.3*	19.3*										18.6*	18.6*	30'7"
-10.5m t					10.3*	10.3*														8.2*	8.2*	7.2
-35ft lb					20.8*	20.8*														17.9*	17.9*	22'2"
12.0m t																				4.0*	4.0*	11.6
40ft lb																				9.0*	9.0*	37'6"
10.5m t													5.7*	5.7*						3.8*	3.8*	12.7
35ft lb													12.6*	12.6*						8.4*	8.4*	41'5"
9.0m t													5.8*	5.8*	4.9*	4.9*				3.6*	3.6*	13.6
30ft lb													12.6*	12.6*						8.0*	8.0*	44'4"
7.5m t													6.0*	6.0*	5.9*	5.9*				3.6*	3.6*	14.2
25ft lb													13.1*	13.1*	13.0*	13.0*				7.9*	7.9*	46'6"
6.0m t									7.9*	7.9*	7.0*	7.0*	6.4*	6.4*	6.1*	6.1*				3.6*	3.6*	14.7
20ft lb									16.9*	16.9*	15.1*	15.1*	14.0*	14.0*	13.4*	13.4*				7.9*	7.9*	48'1"
4.5m t					15.2*	15.2*	11.0*	11.0*	8.9*	8.9*	7.7*	7.7*	6.9*	6.9*	6.4*	6.4*				3.6*	3.6*	15.0
15ft lb					32.2*	32.2*	23.6*	23.6*	19.2*	19.2*	16.6*	16.6*	15.0*	15.0*	14.0*	14.0*				8.0*	8.0*	49'1"
3.0m t									12.7*	12.7*	10.0*	10.0*	8.4*	8.4*	7.4*	7.4*	4.7*	4.7*		3.7*	3.7*	15.1
10ft lb									27.3*	27.3*	21.6*	21.6*	18.2*	18.2*	16.1*	16.1*	14.7*	14.7*		8.2*	8.2*	49'6"
1.5m t									14.0*	14.0*	11.0*	11.0*	9.1*	9.1*	7.9*	7.9*	7.1	7.1*	4.5*	4.5*	15.1	
5ft lb									23.5*	23.5*	30.2*	30.2*	23.7*	23.7*	17.2*	17.2*	15.2	15.5*		8.6*	8.6*	49'5"
0m t									12.2*	12.2*	14.9*	14.9*	11.7*	11.7*	9.7*	9.7*	8.2	8.4*		4.2*	4.2*	14.9
0ft lb									28.3*	28.3*	32.2*	32.2*	25.4*	25.4*	21.0*	21.0*	17.6	18.1*	14.8	9.2*	9.2*	48'10"
-1.5m t			9.2*	9.2*	15.9*	15.9*	15.2	15.4*	11.8	12.3*	9.6	10.2*	8.0	8.7*	6.8	7.6*				4.5*	4.5*	14.5
-5ft lb			20.8*	20.8*	36.4*	36.4*	32.8	33.3*	25.5	26.5*	20.7	22.0*	17.2	18.8*	14.6	16.6*				10.0*	10.0*	47'8"
-3.0m t	11.2*	11.2*	14.0*	14.0*	19.9*	19.9*	15.1	15.5*	11.7	12.5*	9.5	10.4*	7.9	8.9*	6.7	7.7*				5.0*	5.0*	14.0
-10ft lb	25.0*	25.0*	31.6*	31.6*	43.2*	43.2*	32.6	33.6*	25.2	27.0*	20.4	22.5*	17.0	19.2*	14.6	16.6*				11.1*	11.1*	46'
-4.5m t	15.6*	15.6*	19.0*	19.0*	19.3*	19.3*	15.3	15.3*	11.7	12.4*	9.5	10.4*	7.9	8.8*						5.8*	5.8*	13.3
-15ft lb	35.0*	35.0*	42.8*	42.8*	41.9*	41.9*	32.9	33.1*	25.3	26.9*	20.5	22.4*	17.2	19.0*						12.8*	12.8*	43'7"
-6.0m t	20.4*	20.4*	23.8*	23.8*	18.4*	18.4*	14.7*	14.7*	12.0	12.0*	9.7	10.0*	8.2	8.3*						7.0*	7.0*	12.4
-20ft lb	45.7*	45.7*	51.5*	51.5*	39.7*	39.7*	31.7*	31.7*	25.8	26.0*	20.9	21.6*								15.5*	15.5*	40'5"
-7.5m t	25.8*	25.8*	21.5*	21.5*	16.8*	16.8*	13.5*	13.5*	11.1*	11.1*	9.0*	9.0*								8.3*	8.3*	11.1
-25ft lb	58.2*	58.2*	46.3*	46.3*	36.2*	36.2*	29.1*	29.1*	23.8*	23.8*	19.0*	19.0*								18.3*	18.3*	36'2"
-9.0m t	24.3*	24.3*	18.0*	18.0*	14.2*	14.2*	11.5*	11.5*	9.0*	9.0*										8.4*	8.4*	9.5
-30ft lb	51.7*	51.7*	38.4*	38.4*	30.3*	30.3*	24.3*	24.3*												18.6*	18.6*	30'7"
-10.5m t					9.6*	9.6*														8.2*	8.2*	7.2
-35ft lb																						22'2"

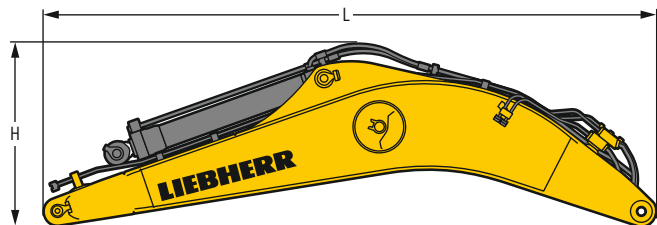
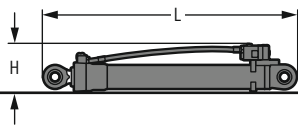
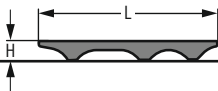
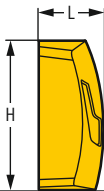
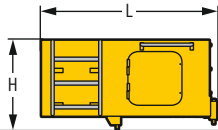
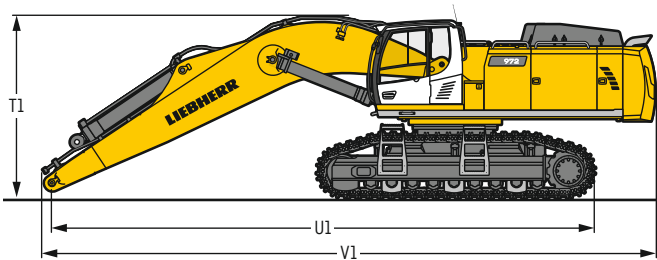
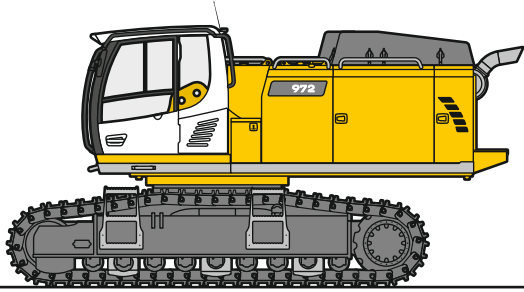
Height Can be slewed through 360° In longitudinal position of undercarriage Max. reach * Limited by hydr. capacity

The load values are quoted in tons (t) / lb x 1,000 at stick end (without bucket), and may be swung 360° on firm and even ground. Adjacent values are valid for the undercarriage when in the longitudinal position. Capacities are valid for 750 mm / 30" wide track pads. Indicated loads are based on ISO 10567 standard and do not exceed 75% of tipping or 87% of hydraulic capacity (indicated via *). Without bucket cylinder, link and lever the lift capacities will increase by 1,150 kg / 2,540 lb / 825 kg¹⁾ / 1,820 lb¹⁾. Lifting capacity of the excavator is limited by machine stability and hydraulic capacity.

Determine maximum load lift from load lift chart displayed in the operator's cab or from load lift chart detailed in the operator's manual supplied with the machine.

¹⁾ for stick 5.00 m / 16'5"

Dimensions and weights



Basic machine

Track pads	mm / in	500 / 20"	600 / 24"	750 / 30"
Weight with backhoe equipment and HD undercarriage without counterweight	kg / lb	40,750 / 89,840	41,450 / 91,380	42,400 / 93,480
Weight with shovel equipment and HD undercarriage without counterweight	kg / lb	40,750 / 89,840	41,450 / 91,380	42,400 / 93,480
Weight with backhoe equipment and LC-V undercarriage without counterweight	kg / lb	43,450 / 95,790	44,150 / 97,330	45,250 / 99,760

Machine without stick

			HD	LC-V
T1	Mono boom 7.00 m / 23'	mm / ft in	3,400 / 11'2"	3,550 / 11'8"
	Mono boom 8.20 m / 26'11"	mm / ft in	3,650 / 12'	3,750 / 12'4"
	Mono boom 10.00 m / 32'10"	mm / ft in	4,100 / 13'5"	4,200 / 13'9"
U1	Mono boom 7.00 m / 23'	mm / ft in	9,950 / 32'8"	9,900 / 32'6"
	Mono boom 8.20 m / 26'11"	mm / ft in	11,200 / 36'9"	11,200 / 36'9"
	Mono boom 10.00 m / 32'10"	mm / ft in	13,100 / 43'	13,100 / 43'
V1	Mono boom 7.00 m / 23'	mm / ft in	11,450 / 37'7"	11,450 / 37'7"
	Mono boom 8.20 m / 26'11"	mm / ft in	12,700 / 41'8"	12,700 / 41'8"
	Mono boom 10.00 m / 32'10"	mm / ft in	14,550 / 47'9"	14,550 / 47'9"

Cab elevation

			800 mm / 2'7"
L	Length	mm / ft in	1,890 / 6'2"
H	Height	mm / ft in	930 / 3'1"
	Width	mm / ft in	1,370 / 4'6"
	Weight	kg / lb	600 / 1,320

Counterweight

			Std	heavy
L	Length	mm / ft in	770 / 2'6"	770 / 2'6"
H	Height	mm / ft in	1,550 / 5'1"	1,550 / 5'1"
	Width	mm / ft in	3,360 / 11'	3,360 / 11'
	Weight	kg / lb	11,000 / 24,250	14,500 / 31,970

Upper protection screen

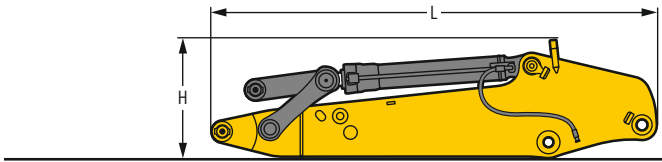
L	Length	mm / ft in	1,960 / 6'5"
H	Height	mm / ft in	190 / 7"
	Width	mm / ft in	1,110 / 3'8"
	Weight	kg / lb	75 / 170

Hoist cylinders (two)

L	Length	mm / ft in	2,650 / 8'8"
H	Height	mm / ft in	490 / 1'7"
	Width	mm / ft in	360 / 1'2"
	Weight	kg / lb	2 x 750 / 2 x 1,650

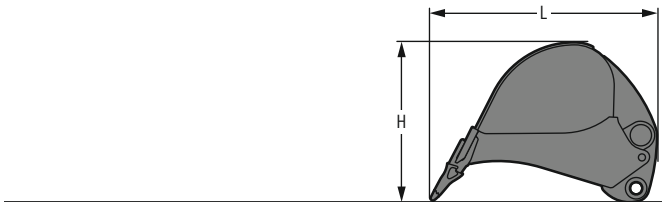
Mono boom with stick cylinder

Boom length	m / ft in	7.00 / 23'	8.20 / 26'11"	10.00 / 32'10"	
L	Length	mm / ft in	7,350 / 24'1"	8,550 / 28' 1"	10,350 / 33'11"
H	Height	mm / ft in	2,200 / 7'3"	2,050 / 6' 9"	2,350 / 7' 9"
	Width	mm / ft in	1,450 / 4'9"	1,450 / 4' 9"	1,450 / 4' 9"
	Weight	kg / lb	7,200 / 15,870	7,900 / 17,420	9,000 / 19,840



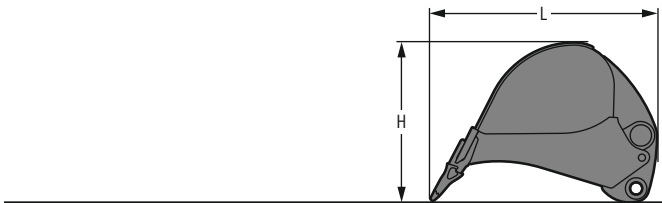
Stick with bucket cylinder

Stick length	m / ft in	2,60 / 8'6"	3,00 / 9'10"	3,40 / 11'2"	4,20 / 13' 9"	5,00 / 16' 5"
L Length	mm / ft in	3,950 / 13'	4,250 / 13'11"	4,650 / 15'3"	5,450 / 17'11"	6,250 / 20' 6"
H Height	mm / ft in	1,250 / 4'1"	1,250 / 4' 1"	1,250 / 4'1"	1,200 / 3'11"	1,200 / 3'11"
Width	mm / ft in	950 / 3'1"	950 / 3' 1"	950 / 3'1"	950 / 3' 1"	850 / 2' 9"
Weight	kg / lb	3,500 / 7,720	3,650 / 8,050	3,800 / 8,380	4,100 / 9,040	4,200 / 9,260



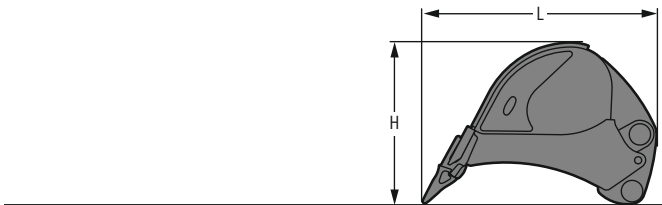
Backhoe buckets

		Std			
Cutting width	mm / ft in	1,400 / 4'7"	1,700 / 5'7"	1,950 / 6'5"	2,150 / 7'1"
Capacity	m ³ / yd ³	2,00 / 2.62	2,50 / 3.27	3,00 / 3.92	3,50 / 4.58
L Length	mm / ft in	2,300 / 7'7"	2,300 / 7'7"	2,300 / 7'7"	2,300 / 7'7"
H Height	mm / ft in	1,550 / 5'1"	1,550 / 5'1"	1,550 / 5'1"	1,550 / 5'1"
Width	mm / ft in	1,450 / 4'9"	1,750 / 5'9"	2,000 / 6'7"	2,200 / 7'3"
Weight	kg / lb	2,500 / 5,510	2,850 / 6,280	3,100 / 6,830	3,350 / 7,390



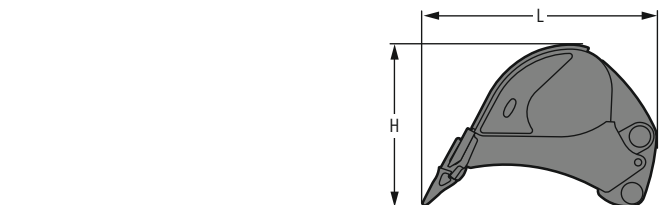
Backhoe buckets

		Std			
Cutting width	mm / ft in	1,950 / 6'5"	2,150 / 7'1"	2,250 / 7'5"	2,450 / 8'
Capacity	m ³ / yd ³	4,00 / 5.23	4,50 / 5.88	5,00 / 6.54	5,50 / 7.19
L Length	mm / ft in	2,500 / 8' 2"	2,500 / 8' 2"	2,500 / 8' 2"	2,500 / 8' 2"
H Height	mm / ft in	1,800 / 5'11"	1,800 / 5'11"	1,800 / 5'11"	1,800 / 5'11"
Width	mm / ft in	2,000 / 6' 7"	2,200 / 7' 3"	2,300 / 7' 7"	2,500 / 8' 2"
Weight	kg / lb	3,600 / 7,940	3,800 / 8,380	3,950 / 8,710	4,200 / 9,260



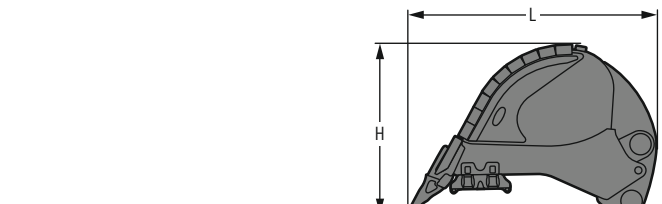
Backhoe buckets

		HD			
Cutting width	mm / ft in	1,450 / 4'9"	1,750 / 5'9"	2,000 / 6'7"	2,200 / 7'3"
Capacity	m ³ / yd ³	2,00 / 2.62	2,50 / 3.27	3,00 / 3.92	3,50 / 4.58
L Length	mm / ft in	2,400 / 7'10"	2,400 / 7'10"	2,400 / 7'10"	2,400 / 7'10"
H Height	mm / ft in	1,600 / 5' 3"	1,600 / 5' 3"	1,600 / 5' 3"	1,600 / 5' 3"
Width	mm / ft in	1,500 / 4'11"	1,800 / 5'11"	2,050 / 6' 9"	2,250 / 7' 5"
Weight	kg / lb	3,100 / 6,830	3,600 / 7,940	3,900 / 8,600	4,300 / 9,480



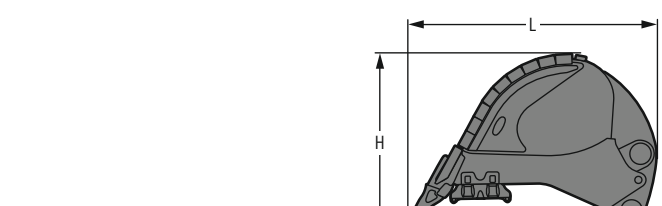
Backhoe buckets

		HD			
Cutting width	mm / ft in	2,000 / 6'7"	2,200 / 7'3"	2,300 / 7'3"	
Capacity	m ³ / yd ³	4,00 / 5.23	4,50 / 5.88	5,00 / 6.54	
L Length	mm / ft in	2,650 / 8' 8"	2,650 / 8' 8"	2,650 / 8' 8"	
H Height	mm / ft in	1,800 / 5'11"	1,800 / 5'11"	1,800 / 5'11"	
Width	mm / ft in	2,050 / 6' 9"	2,250 / 7' 5"	2,350 / 7' 9"	
Weight	kg / lb	4,500 / 9,920	4,850 / 8,490	5,050 / 11,130	



Backhoe buckets

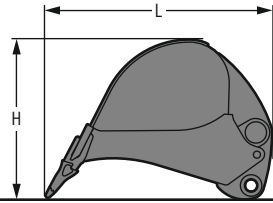
		HDV			
Cutting width	mm / ft in	1,450 / 4'9"	1,750 / 5'9"	2,000 / 6'7"	2,200 / 7'3"
Capacity	m ³ / yd ³	2,00 / 2.62	2,50 / 3.27	3,00 / 3.92	3,50 / 4.58
L Length	mm / ft in	2,400 / 7'10"	2,400 / 7'10"	2,400 / 7'10"	2,400 / 7'10"
H Height	mm / ft in	1,600 / 5' 3"	1,600 / 5' 3"	1,600 / 5' 3"	1,600 / 5' 3"
Width	mm / ft in	1,500 / 4'11"	1,800 / 5'11"	2,050 / 6' 9"	2,250 / 7' 5"
Weight	kg / lb	3,500 / 7,720	4,000 / 8,820	4,350 / 9,590	4,750 / 10,470



Backhoe buckets

		HDV			
Cutting width	mm / ft in	2,000 / 6'7"	2,200 / 7'3"	2,300 / 7'7"	
Capacity	m ³ / yd ³	4,00 / 5.23	4,50 / 5.88	5,00 / 6.54	
L Length	mm / ft in	2,650 / 8' 8"	2,650 / 8' 8"	2,650 / 8' 8"	
H Height	mm / ft in	1,800 / 5'11"	1,800 / 5'11"	1,800 / 5'11"	
Width	mm / ft in	2,050 / 6' 9"	2,250 / 7' 5"	2,350 / 7' 9"	
Weight	kg / lb	5,000 / 11,020	5,350 / 11,800	5,600 / 12,350	

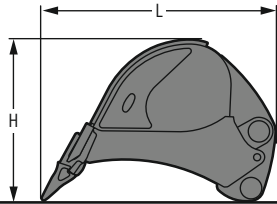
Dimensions and weights



Backhoe buckets R 956

Std

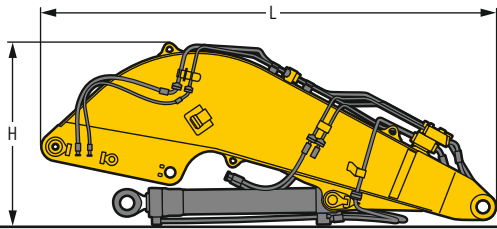
Cutting width	mm / ft in	1,350 / 4'5"	1,550 / 5'1"	1,750 / 5'9"
Capacity	m ³ / yd ³	1.65 / 2.16	2.00 / 2.62	2.35 / 3.07
L Length	mm / ft in	2,200 / 7'3"	2,200 / 7'3"	2,200 / 7' 3"
H Height	mm / ft in	1,550 / 5'1"	1,550 / 5'1"	1,550 / 5' 1"
Width	mm / ft in	1,400 / 4'7"	1,600 / 5'3"	1,800 / 5'11"
Weight	kg / lb	2,100 / 4,630	2,250 / 4,960	2,450 / 5,400



Backhoe buckets R 956

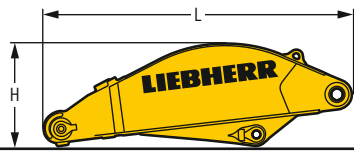
HD

Cutting width	mm / ft in	1,350 / 4'5"	1,550 / 5'1"
Capacity	m ³ / yd ³	1.65 / 2.16	2.00 / 2.62
L Length	mm / ft in	2,200 / 7'3"	2,200 / 7'3"
H Height	mm / ft in	1,600 / 5'3"	1,600 / 5'3"
Width	mm / ft in	1,400 / 4'7"	1,600 / 5'3"
Weight	kg / lb	2,350 / 5,180	2,650 / 5,840



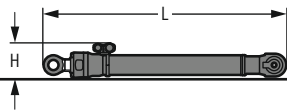
Shovel boom

L Length	mm / ft in	4,750 / 15'7"
H Height	mm / ft in	1,950 / 6'5"
Width	mm / ft in	1,900 / 6'3"
Weight without crowd cylinder	kg / lb	5,050 / 11,130
Weight crowd cylinder	kg / lb	650 / 1,430



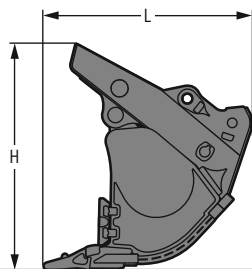
Shovel stick

L Length	mm / ft in	3,250 / 10' 8"
H Height	mm / ft in	1,100 / 3' 7"
Width	mm / ft in	1,500 / 4'11"
Weight	kg / lb	2,500 / 5,510



Shovel bucket cylinders (two)

L Length	mm / ft in	2,550 / 8'4"
H Height	mm / ft in	350 / 1'2"
Width	mm / ft in	500 / 1'8"
Weight	kg / lb	2 x 400 / 2 x 880



Front shovels

Cutting width	mm / ft in	2,350 / 7'9"	2,600 / 8'6"	2,600 / 8'6"	2,600 / 8'6"
Capacity	m ³ / yd ³	3.50 / 4.58	4.00 / 5.23	4.50 / 5.88	5.00 / 6.54
L Length	mm / ft in	2,200 / 7' 3"	2,200 / 7' 3"	2,200 / 7' 3"	2,300 / 7'7"
H Height	mm / ft in	2,400 / 7'10"	2,400 / 7'10"	2,400 / 7'10"	2,500 / 8'2"
Width	mm / ft in	2,400 / 7'10"	2,650 / 8' 8"	2,650 / 8' 8"	2,650 / 8'8"
Weight					
Level I	kg / lb	-	6,500 / 14,330	6,700 / 14,770	6,800 / 14,990
Level II	kg / lb	6,600 / 14,550	7,000 / 15,430	7,200 / 15,870	7,500 / 16,540
Level III	kg / lb	7,350 / 16,200	7,900 / 17,420	7,800 / 17,200	-

Serial equipment

Undercarriage

Lashing eyes
Sprocket with dirt ejector
Track and carrier rollers, sealed and lifetime-lubricated
Travel motor housing protection

Uppercarriage

Access platforms without protruding parts
Anti-skid surfaces
Automatic swing brake lock
Centralized lubrication system (automatic)
DEF tank lockable access hatch
Engine hood with gas spring opening
Extended tool set including tool box
Handrails
Lockable fuel tank cap with padlock
Lockable service doors
Lockable storage box
Main switch, accessible from ground level
Pre-heating system for fuel
Protection grid on radiator fan
Sound insulation
Swing-out radiators
Windshield washer fluid tank

Hydraulic system

Dedicated swing circuit
Filter with integrated fine filters
Hydraulic pressure measuring ports
Hydraulic tank shut-off valve
Magnetic rod
Pressure accumulator for controlled lowering of equipment with engine turned off

Engine

Air filter with automatic dust ejector
Automatic engine idling / speed increase, controlled via joystick sensors
Common-Rail injection system
Exhaust gas after-treatment system - SCR
Fixed geometry turbocharger
Fuel fine filter
Fuel pre-filter and water separator
Fuel priming pump
Intercooler
Power Pack US EPA Tier 4 Final
Stepless adjustable engine speed

Cab

9" multifunction color touchscreen
Air conditioning, automatic, tri-zone, controlled via display
Armrests adjustable in length, height and inclination
Bottle holder
Cab door sliding windows
Cigarette lighter
Coat hook
DEF consumption on touchscreen
DEF level on touchscreen
Electric socket in cabin (12V)
Electric socket in cabin (24V)
Emergency hammer
Engine oil level on touchscreen
Footrest
Fuel consumption on touchscreen
Fuel level on touchscreen
Impact resistant roof window
Impact resistant two-piece windscreen
Interior lighting
Laminated right hand side window
LiDAT Plus (Liebherr data transfer system)*
Mobile phone storage net
Modetronic
Movement priority between swing and boom, adjustable via touchscreen
Rearview mirror
Rear view monitoring camera
Rear view monitoring camera distance gauge
Rear window emergency exit
Right hand side view monitoring camera
Roll-down sun blinds for windscreen and roof window
Rubber floor mat, fixed on floor and removable
Storage box
Storage nets
Storage spaces
Tilttable console left
Tinted windows
Visco-elastic damping
Windscreen wiper and washer
Work mode selector

Equipment

Anti-drift system boom cylinders
Anti-drift system stick cylinder
Boom cylinders regeneration
Pipe fracture safety valve for stick cylinder
Pipe fracture safety valves for boom cylinders
Pivot points made of cast steel
SAE split flanges on high pressure lines
Stick bottom protection
Stick cylinder regeneration

* optionally extendable after one year

Equipment standard / option

Undercarriage

Chain guide 3 pieces	●
Chain guide 4 pieces	+
Chain guide full length	+
Reinforced cover and base plate for undercarriage center section	+
Reinforced cover plate for center section (LC-V undercarriage)	+
Screws protection for sideframe (LC-V undercarriage)	+
Special painting	+
Steps	●
Track pads double grouser 500 mm / 20°, chamfered	+
Track pads double grouser 600 mm / 24°, chamfered	●
Track pads double grouser 750 mm / 30°, chamfered	+
Track pads double grouser 900 mm / 35°, chamfered	+
Travel drive gearbox protection	+
Undercarriage HD	+
Undercarriage LC-V	+
Undercarriage protection plate for drop-ball application	+

Uppercarriage

Air pre-filter with cyclonical dust trap	+
Boxing ring	+
Catwalks left and right	●
Catwalk wide with railing	+
Counterweight heavy 14.5 t / 31,970 lb	+
Counterweight standard 11.0 t / 24,250 lb	●
Electric socket on uppercarriage (24 V)	+
Filter for hydraulic hammer return flow	+
Fixed cab riser 800 mm / 27"	+
Headlight on uppercarriage, lateral right, LED+, 1 piece	+D
Headlights on uppercarriage, front, LED, 2 pieces, protections included	●D
Headlights on uppercarriage, front, LED+, 2 pieces, protections included	+D
Headlights on uppercarriage, rear, LED+, 2 pieces	+D
Liebherr Power Efficiency - Engine Control	●
Lighting for tank area	+D
Lighting for uppercarriage access	+D
Radiator fine mesh protection grid	+
Reversible fan drive	+
Skyview 360°	+
Special painting	+
Swing ring and lubrication hoses protection	+
Tank refilling pump fuel	+
Wiggins coupling for fuel	+

Hydraulic system

Bypass filter for hydraulic oil	+
Liebherr hydraulic oil	●
Liebherr hydraulic oil, adapted for extreme climate conditions	+
Liebherr hydraulic oil, biodegradable	+

Engine

Automatic engine shutdown after idling	+
Engine shut-down with overrun	+
Lighting for engine compartment	+D



Cab

3" seat belt with retractor, orange color	●
4-points seat belt	+
Acoustic travel alarm deactivatable	+
Auxiliary heater programmable	+
Bottom windscreen wiper	+
Coming / Leaving Home	+ ¹⁾
Cool box (12V)	+
Dark tinted windows	+
Electrically adjustable and heated outside rear-view mirrors	+
Electronic immobilizer	+
Emergency stop in cab	+
FGPS front guard tiltable	+
Fire extinguisher	+
First-aid box	+
FOPS top guard	+
Handrests elevated for joysticks	+
Headlights on cab, front, LED, 2 pieces	● ¹⁾
Headlights on cab, front, LED+, 2 pieces	+ ¹⁾
Headlights on cab roof, front, LED+, 2 pieces	+ ¹⁾
High pressure circuit switchable on pedals or mini-joystick	+
High pressure circuit with Tool Control (20 attachment adjustments on display)	+
Lighting for cabin access	+ ¹⁾
Luminosity control (LED+ headlights)	+ ¹⁾
Medium pressure circuit	+
Mini-joysticks proportional	+
Operator seat Comfort	●
Operator seat Premium	+
Overload warning system	+
Radio Comfort	+
Radio pre-installation	●
Roof sun shield	+
Roof window wiper	+
Rotating beacon on cabin, LED, 1 piece	+
Shortcut button on joystick configurable	●
Special painting	+
Sun visor	+



Equipment

Boom bottom protection	+
Boom cylinder rods protection	+
Bucket cylinder rod protection	+
Bucket Fill Assist	+
Centralized lubrication extended for connecting link	+
Floating boom	+
Headlights on boom, LED, 2 pieces, protections included	● ¹⁾
Headlights on boom, LED+, 2 pieces, protections included	+ ¹⁾
Mono boom 7.00 m / 23'	+
Mono boom 8.20 m / 26'11"	+
Mono boom 10.00 m / 32'10"	+
Preparation for ripper tooth	+
Quick coupler SWA 92 hydraulic	+
Shovel boom 4.50 m / 14'9"	+
Shovel stick 2.90 m / 9'6"	+
Special painting	+
Stick 2.60 m / 8'6"	+
Stick 3.00 m / 9'10"	+
Stick 3.40 m / 11'2"	+
Stick 4.20 m / 13'9"	+
Stick sealed 5.00 m / 16'5"	+

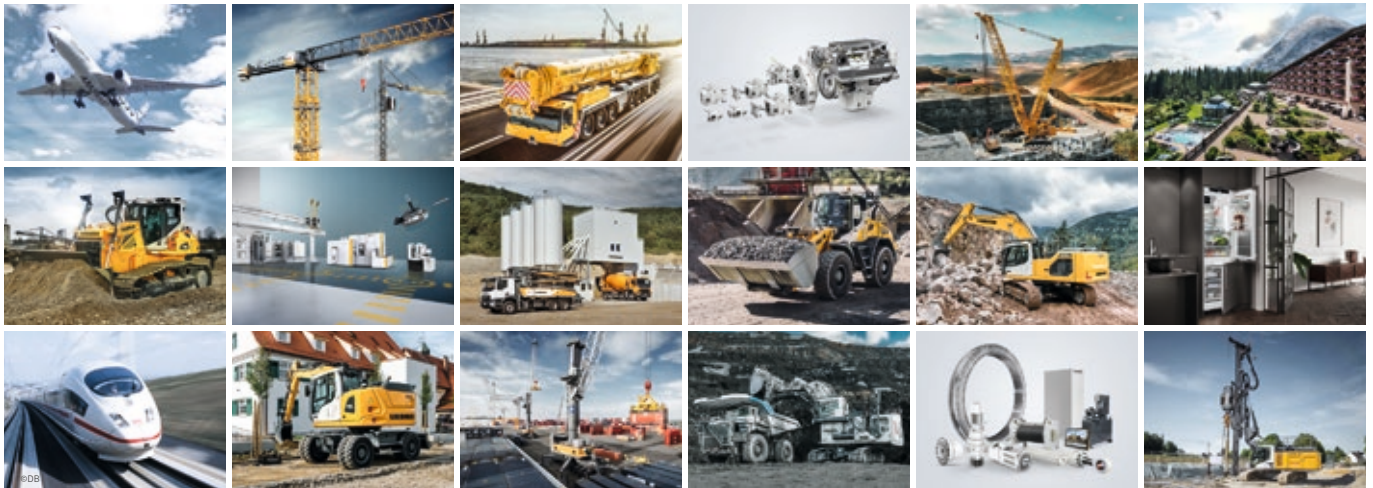
● = Standard, + = Option

¹⁾ Equipment not individually available, but only as predefined packages

Non-exhaustive list, please contact us for further information.

Options and / or special equipment, supplied by vendors other than Liebherr, are only to be installed with the knowledge and approval of Liebherr in order to retain warranty.

The Liebherr Group



Global and independent: more than 70 years of success

Liebherr was founded in 1949. With the development of the world's first mobile tower crane, Hans Liebherr laid the foundations of a successful family business which today comprises more than 140 companies on all continent and employs nearly 50,000 people. The parent company of the Group is Liebherr-International AG in Bulle (Switzerland), whose associates are exclusively members of the Liebherr family.

Technology leadership and pioneering spirit

Liebherr regards itself as a pioneer. This spirit has enabled the company to make a decisive contribution to the technological history of many industries. Today, employees around the world still share the courage of the company founder to take new paths. They are all united by a passion for technology and fascinating products and the determination to perform outstanding work for their customers.

Widely diversified product portfolio

Not only is Liebherr one of the biggest construction equipment manufacturers in the world, it also provides high-quality, user-oriented products and services in a wide range of other areas. The product portfolio includes the segments earthmoving, material handling technology, deep foundation machines, mining, mobile and crawler cranes, tower cranes, concrete technology, maritime cranes, aerospace and transportation systems, gear technology and automation systems, refrigeration and freezing, components and hotels.

Customized solutions and maximum customer benefit

Liebherr solutions are characterized by maximum precision, outstanding implementation and exceptional longevity. Its mastery of key technologies enables the company to offer its customers customized solutions. For Liebherr, customer focus does not end with the product; it also encompasses a wide range of services that make a real difference.

www.liebherr.us

WARNING

Breathing diesel engine exhaust exposes you to chemicals known to the State of California to cause cancer and birth defects or other reproductive harm.

- Always start and operate the engine in a well-ventilated area.
- If in an enclosed area, vent the exhaust to the outside.
- Do not modify or tamper with exhaust system.
- Do not idle the engine except as necessary.

For more information go to www.P65warnings.ca.gov/diesel.

WARNING

This product can expose you to chemicals including lead and lead compounds, which are known to the State of California to cause cancer and birth defects or other reproductive harm.

For more information go to www.P65warnings.ca.gov.

Liebherr USA, Co.

Construction Equipment Division • 4800 Chestnut Avenue • Newport News, VA 23607, USA • Phone +1 (757) 240 4250
construction.usa@liebherr.com • www.liebherr.us • www.facebook.com/LiebherrConstruction