

Technical data
Hydraulic lift crane

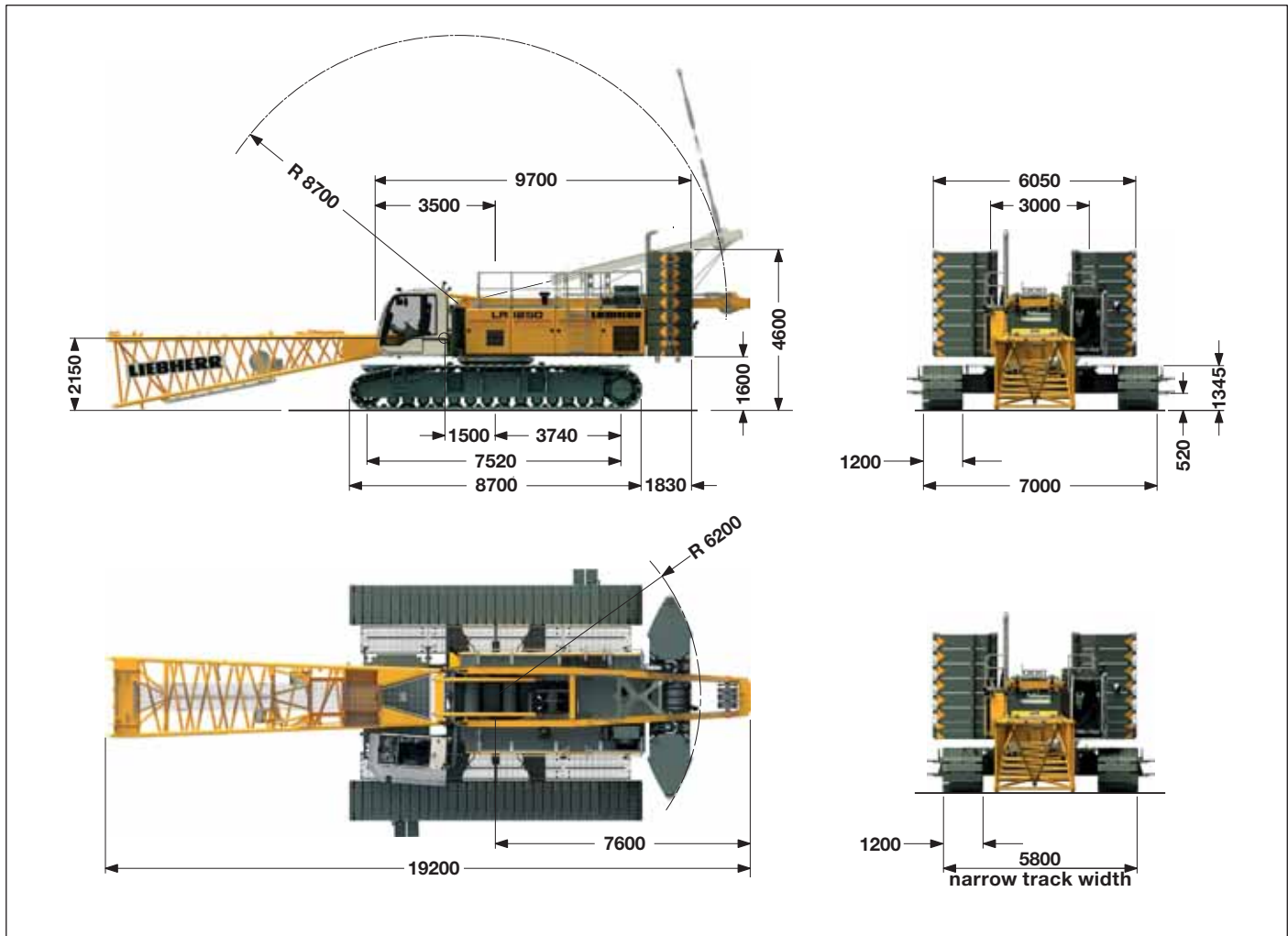
LR 1250
Litronic®



LIEBHERR

Dimensions

Basic machine with undercarriage



Operating weight

The operating weight includes the basic machine with crawlers, 2 main winches 120 kN including wire ropes (260 m and 495 m) and 20 m main boom, consisting of A-frame, boom foot (10 m), boom head (7 m) and boom extension (3 m), 82.3 t basic counterweight, 36 t carbody counterweight and 250 t hook block.

Total weight _____ approx. 210 t

Ground pressure

Ground bearing pressure _____ 1.16 kg/cm²

Equipment

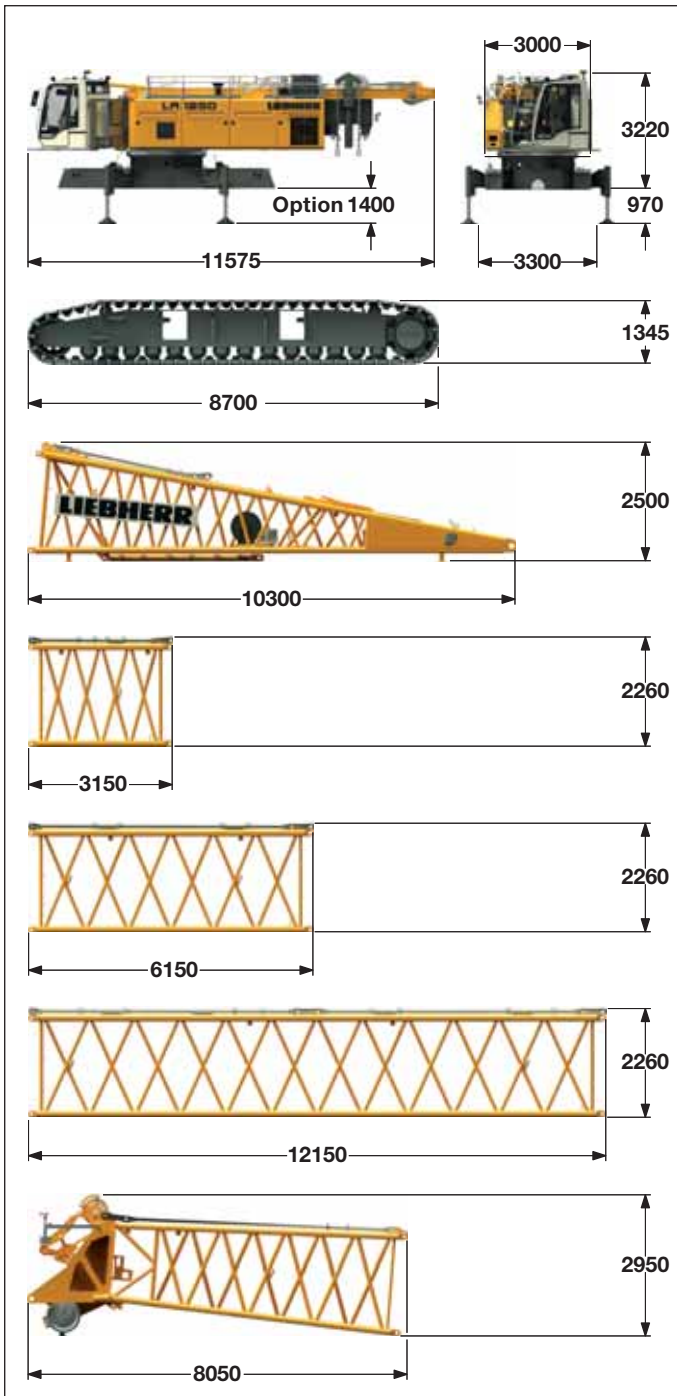
Main boom (No. 2320.xx) max. length	_____	86 m
High reach (No. 2320.xx and 1916.xx)	_____	117 m
Luffing jib (No. 1916.xx) max. length	_____	95 m
Max. combination _____	main boom	53 m
	luffing jib	95 m
Fixed jib (No. 1008.xx)	_____	11 m - 26 m
Auxiliary jib 24 t (option 36 t)		

Remarks

1. The lifting capacities stated are valid for lifting operation only (corresponding with crane classification according to F.E.M. 1.001. crane group A1).
2. Crane standing on firm, horizontal ground.
3. The weight of the lifting device (hoisting ropes, hook block, shackle etc.) must be deducted from the gross lifting capacity to obtain a net lifting value.
4. Additional equipment on boom (e.g. boom walkways, auxiliary jib) must be deducted to get the net lifting capacity.
5. For max. wind speed please refer to lift chart in operator's cab or manual.
6. Working radii are measured from center of swing and under load.
7. The lifting capacities are valid for 360 degrees of swing.
8. Calculation of stability under load is based on DIN 15019 / part 2 / chart 1 and ISO 4305 Table 1 + 2, tipping angle 4°.
9. The structures are calculated according to F.E.M. 1.001 - 1998 (EN 13001-1; EN 13001-2).

Transport dimensions and weights

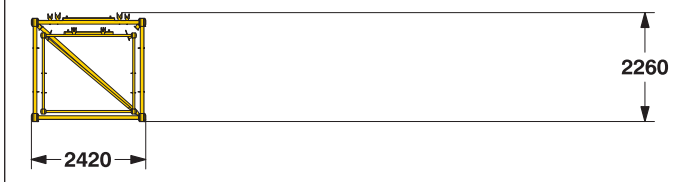
Basic machine and main boom (No. 2320.xx)



* With pendant straps for main boom

** With pendant straps for main boom and luffing jib

Boom transport option



*) Including pendant straps

Basic machine

with A-frame, 2x 120 kN crane winches without boom foot, hoist ropes, basic counterweight and crawlers

Width	3000 mm
Weight	42500 kg
Weight of hoist rope	3.42 kg/m

Crawler

2 x

Track pads	1200 mm
Width	1200 mm
Weight	19800 kg

Boom foot (No. 2320.25)

Width	2430 mm
Weight incl. winch and rope	5600 kg
Weight without winch	4000 kg

Boom section (No. 2320.23)

3 m

Width	2430 mm
Weight*	830 kg
Weight**	920 kg

Boom section (No. 2320.23)

6 m

Width	2430 mm
Weight*	1295 kg
Weight**	1455 kg

Boom section (No. 2320.23)

12 m

Width	2430 mm
Weight*	2340 kg
Weight**	2690 kg

Boom head (No. 2320.23)

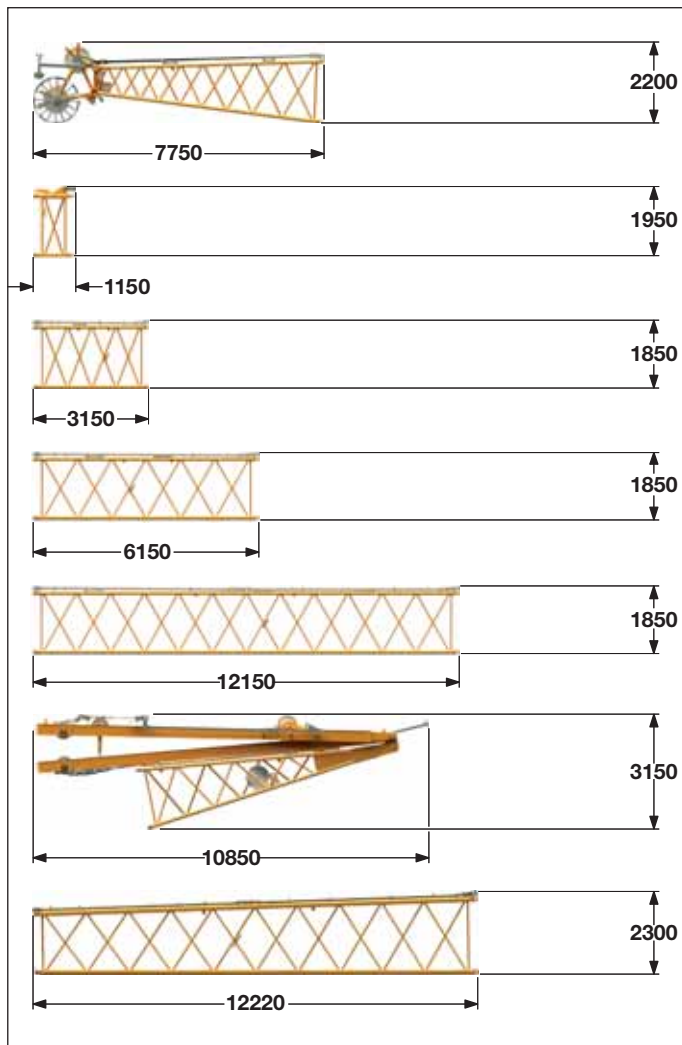
Width	2430 mm
Weight*	4300 kg

Boom transport option

(No. 2320.xx/1916.xx)	12/12	6/6	3/3	m
Length	12250	6250	3250	mm
Weight*	3940	2145	1475	kg

Transport dimensions and weights

Luffing jib (No. 1916.xx)



Luffing jib head (No. 1916.21)

Width	2010 mm
Weight*	1550 kg

L-boom jib section (No. 1916.22) **1 m**

Width	2010 mm
Weight*	460 kg

Luffing jib section (No. 1916.18) **3 m**

Width	2010 mm
Weight*	475 kg

Luffing jib section (No. 1916.18) **6 m**

Width	2010 mm
Weight*	690 kg

Luffing jib section (No. 1916.18) **12 m**

Width	2010 mm
Weight*	1250 kg

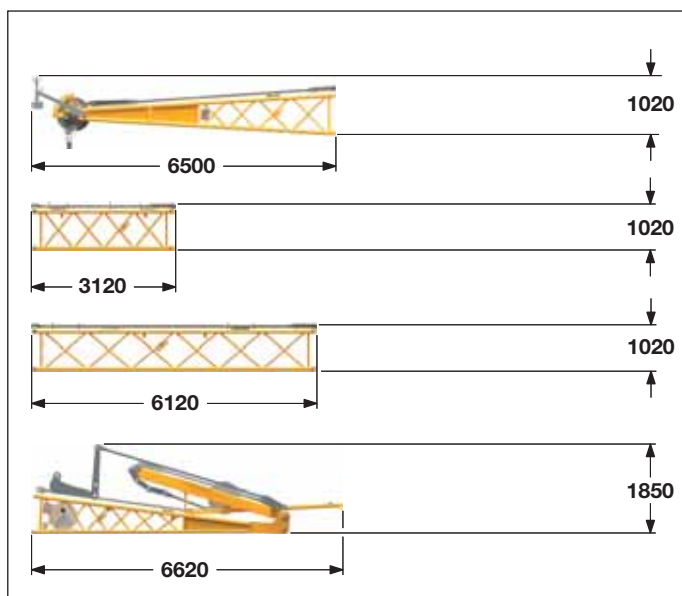
Luffing jib foot with A-frames (No. 1916.22)

Width	2010 mm
Weight*	6300 kg

L-boom section tapered (No. 2320/1916.20) **12 m**

Width	2430 mm
Weight*	1700 kg

Fixed jib (No. 1008.xx)



Fixed jib head (No. 1008.20)

Width	1090 mm
Weight*	920 kg

Fixed jib section (No. 1008.17) **3 m**

Width	1090 mm
Weight*	300 kg

Fixed jib section (No. 1008.17) **6 m**

Width	1090 mm
Weight*	455 kg

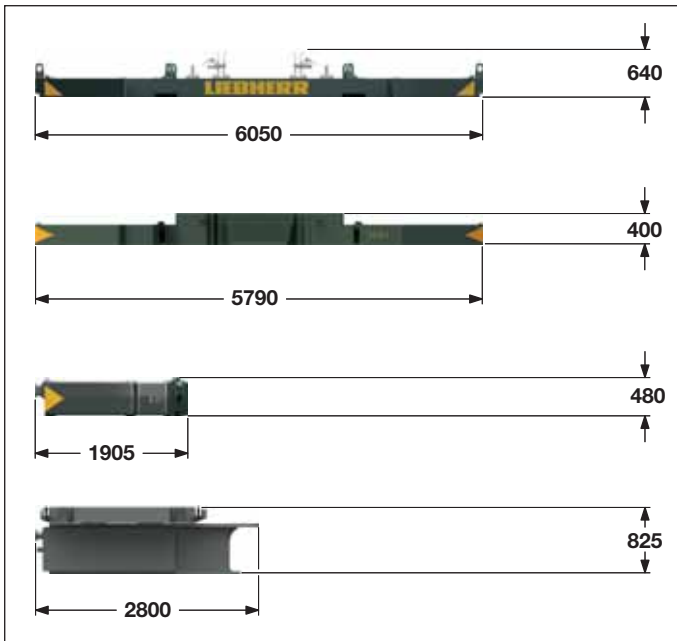
Fixed jib foot with A-frame (No. 1008.20)

Width	2200 mm
Weight*	1950 kg

*) Including pendant straps

Transport dimensions and weights

Counterweight



Counterweight **1 x**

Width	1660 mm
Weight	12000 kg

Counterweight **1 x**

Width	1660 mm
Weight	10000 kg

Counterweight **12 x**

Width	1360 mm
Weight	5000 kg

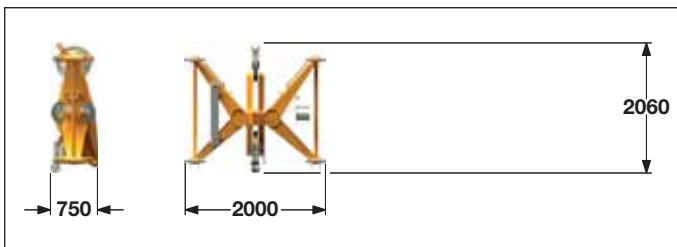
Carbody counterweight **2 x**

Width	3340 mm
Weight	9800 kg

Carbody counterweight **2 x**

Width	3340 mm
Weight	8300 kg

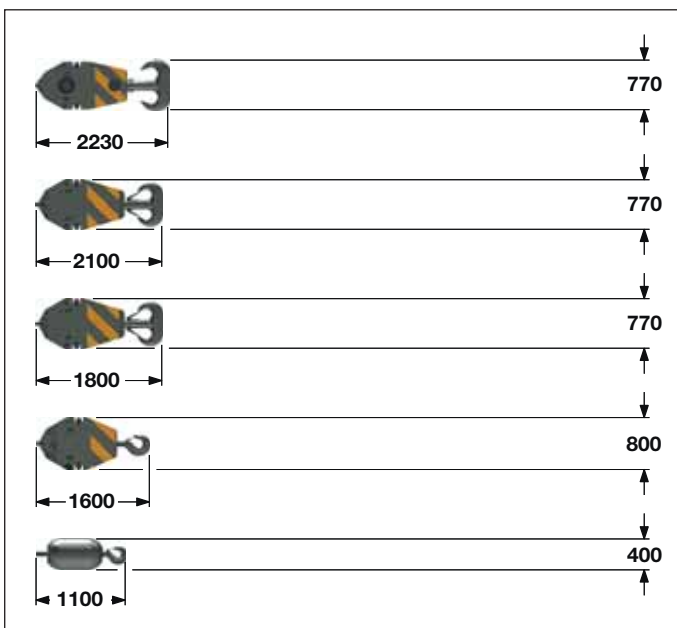
Mid fall (option)



Mid fall section (No. 1916.xx) **0.5 m**

Width	750 mm
Weight	715 kg

Hooks



250 t hook block - 11 sheaves

Width	1030	1250 mm
Weight	2300	3200 kg

160 t hook block - 7 sheaves

Width	640	760	880 mm
Weight	1500	2250	3000 kg

100 t hook block - 5 sheaves

Width	540	670	770 mm
Weight	1300	1800	2300 kg

40 t hook block - 1 sheave

Width	300	400	500 mm
Weight	700	1100	1500 kg

12.5 t single hook

Width	400 mm
Weight	600 kg

Technical description



Engine

Power rating according to ISO 9249, 230 kW (308 hp) at 1700 rpm
Engine type _____ Liebherr D 944 A7-04
Fuel tank _____ 790 l capacity with continuous level indicator and reserve warning
Engine complies with NRMM exhaust certification EPA/CARB Tier 4f and 97/68 EC Stage IV.



Hydraulic system

A double axial displacement pump supplies the open loop hydraulic system, allowing all functions to be operated simultaneously. To minimize peak pressure an automatic working pressure cut-off is integrated in the pump.
All filters are electronically monitored.
The use of synthetic environmentally friendly (biodegradable) oils is possible.
Working pressure _____ max. 350 bar
Oil tank capacity _____ 650 l



Luffing jib winch

Line pull _____ max. 105 kN
Rope diameter _____ 20 mm
Jib luffing _____ 51 sec. from 15° to 78°



Boom winch

Line pull _____ max. 217 kN
Rope diameter _____ 24 mm
Boom up _____ 130 sec. from 15° to 86°



Swing

Consists of rollerbearing with external teeth, swing drive with fixed axial piston hydraulic motor, spring loaded and hydraulically released multi-disc holding brake, planetary gearbox and pinion.
Both swing modes are possible – speed control or free swing.
A multi-disc holding brake acts automatically at zero swing motion.
Swing speed from 0 – 3 rpm continuously variable.



Main winches

Line pull (1st layer) _____ max. 175 kN
Line pull (7th layer) _____ 120 kN
Rope diameter _____ 26 mm
Drum diameter _____ 580 mm
Rope speed _____ 0 – 136 m/min
Rope capacity in 7 layers _____ 489 m
The winches are outstanding in their compact design and easy assembly.
Propulsion is via a planetary gearbox in an oil bath.
Load support by the hydraulic system; additional safety factor provided by a spring loaded, multi-disc holding brake.
The main winches use pressure controlled, variable flow hydraulic motors. This system features sensors that automatically adjust oil flow to provide max. winch speed depending on load.
Option – winch with free-fall system:
Clutch and braking functions on the free-fall system are provided by a compact designed, low wear and maintenance-free multi-disc brake.



Crawlers

Propulsion through axial piston motor, hydraulically released spring loaded multi-disc brake, crawler tracks, hydraulic chain tensioning device.
Track pads _____ 1200 mm
Drive speed _____ 0 – 1.6 km/h



Control

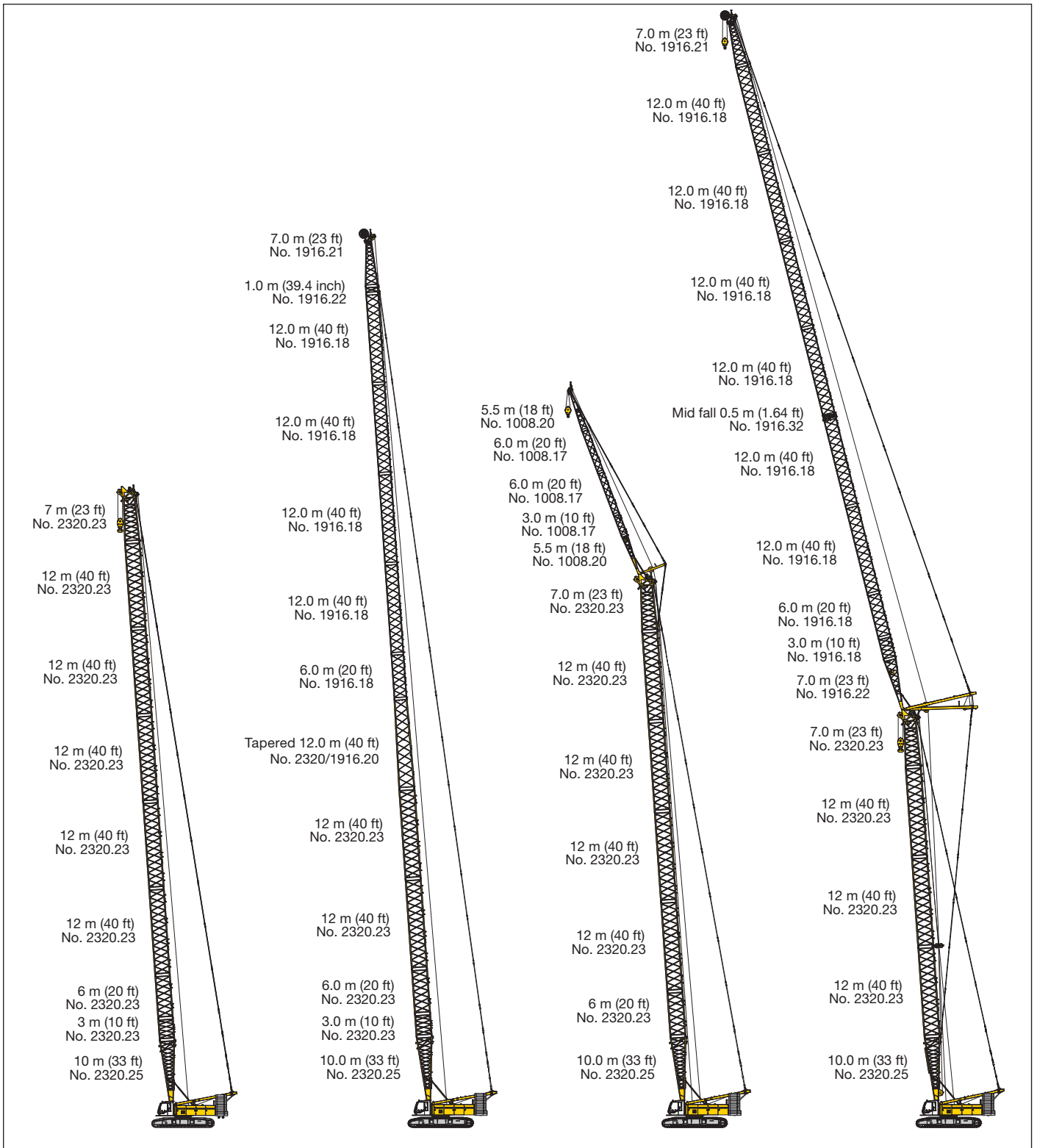
The heart of the hydraulic crawler cranes is the Liebherr control system which has been developed and manufactured in-house.
It includes all control and monitoring functions and is designed to withstand extreme environmental conditions and heavy duty construction tasks. Complete machine operating data as well as warning signals and irregularities are clearly displayed on the high resolution monitor in the operator's cab in the required language.
The electro-hydraulic proportional control allows several movements to be performed simultaneously. This ensures that all categories of loads can be positioned with utmost precision.
Option:
• GSM/GPRS telematics module



Noise emission

Noise emissions correspond with 2000/14/EC directive on noise emission by equipment used outdoors.

Boom combinations



Main boom No. 2320.xx — 86 m

Max. combination — 117 m

Max. combination — 97.0 m

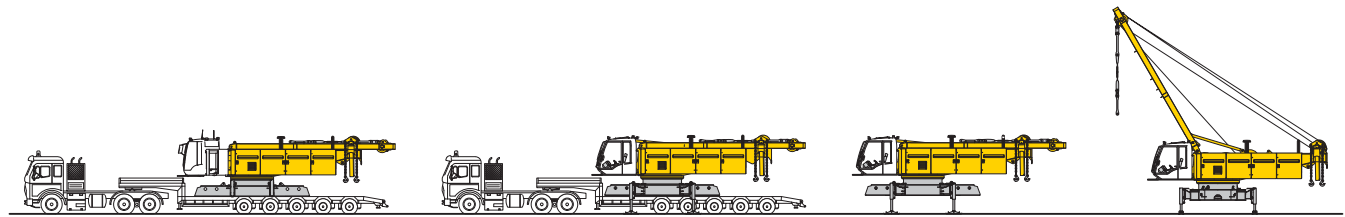
Max. combination — 148 m

Main boom No. 2320.xx — 43 m
 Tapered
 No. 2320/1916.xx — 12 m
 Luffing jib
 No. 1916.xx — 62 m

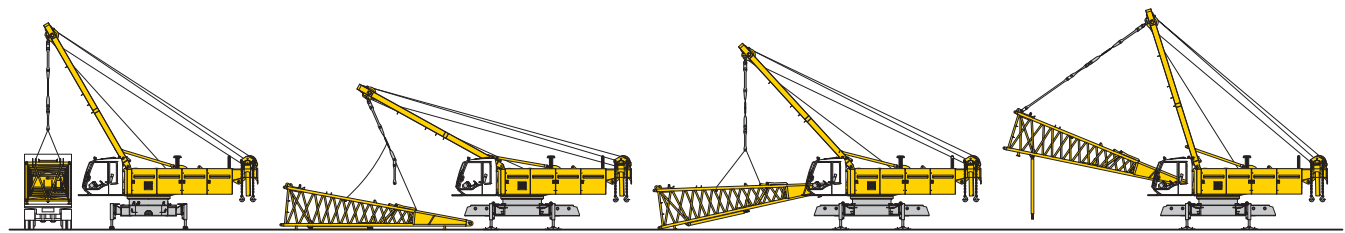
Main boom No. 2320.xx — 71 m
 Fixed jib
 No. 1008.xx — 26 m

Main boom No. 2320.xx — 53 m
 Luffing jib
 No. 1916.xx — 95 m
 Main boom No. 2320.xx — 56 m
 Luffing jib
 No. 1916.xx — 74 m

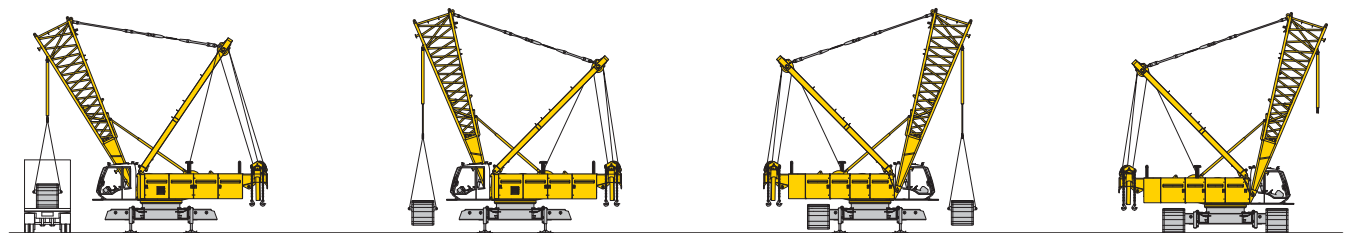
Self assembly system



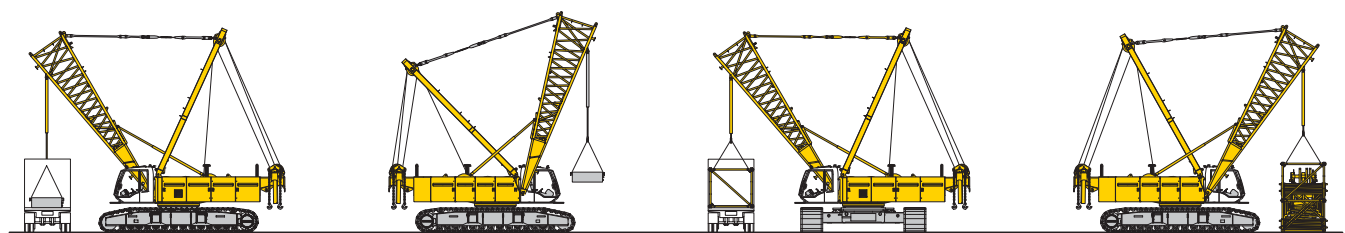
Unloading of basic machine



Unloading and assembly of boom foot

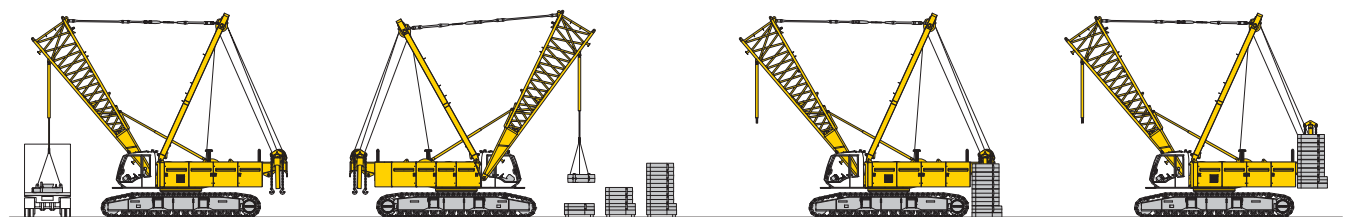


Unloading and assembly of crawlers



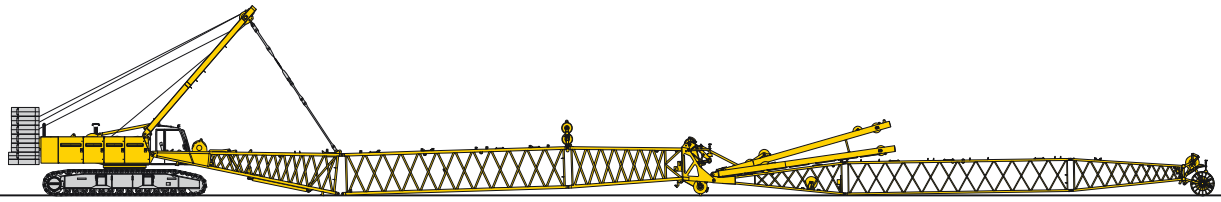
Unloading and assembly of carbody counterweight

Unloading and assembly of boom

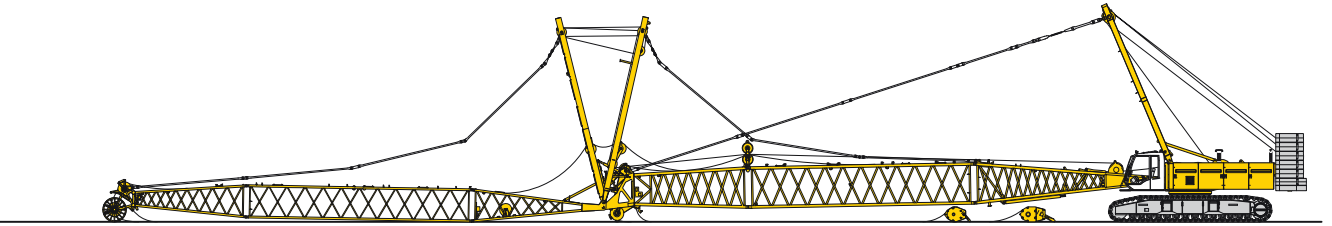


Unloading and assembly of counterweight

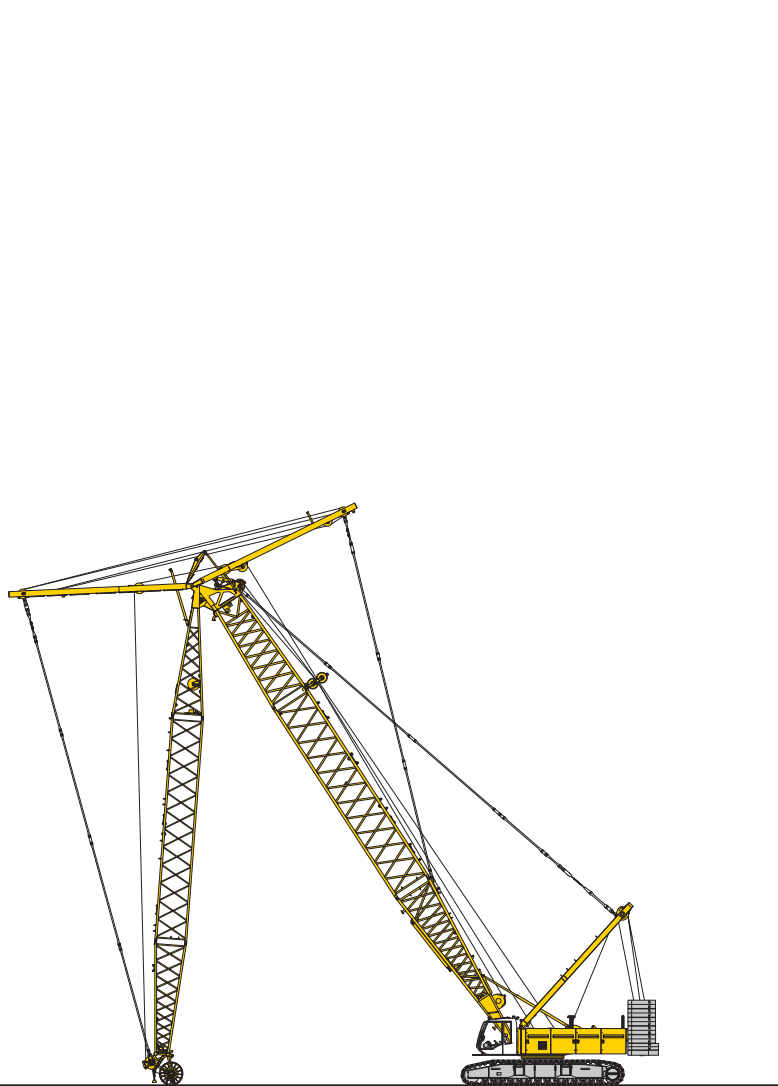
Erecting of main boom to working position



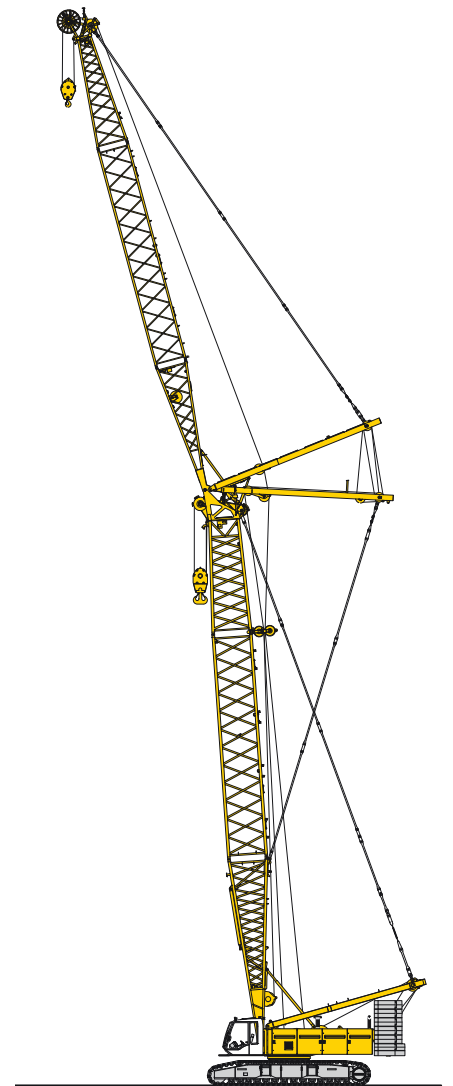
Assembly of boom



Reeving of hoist and luffing jib ropes

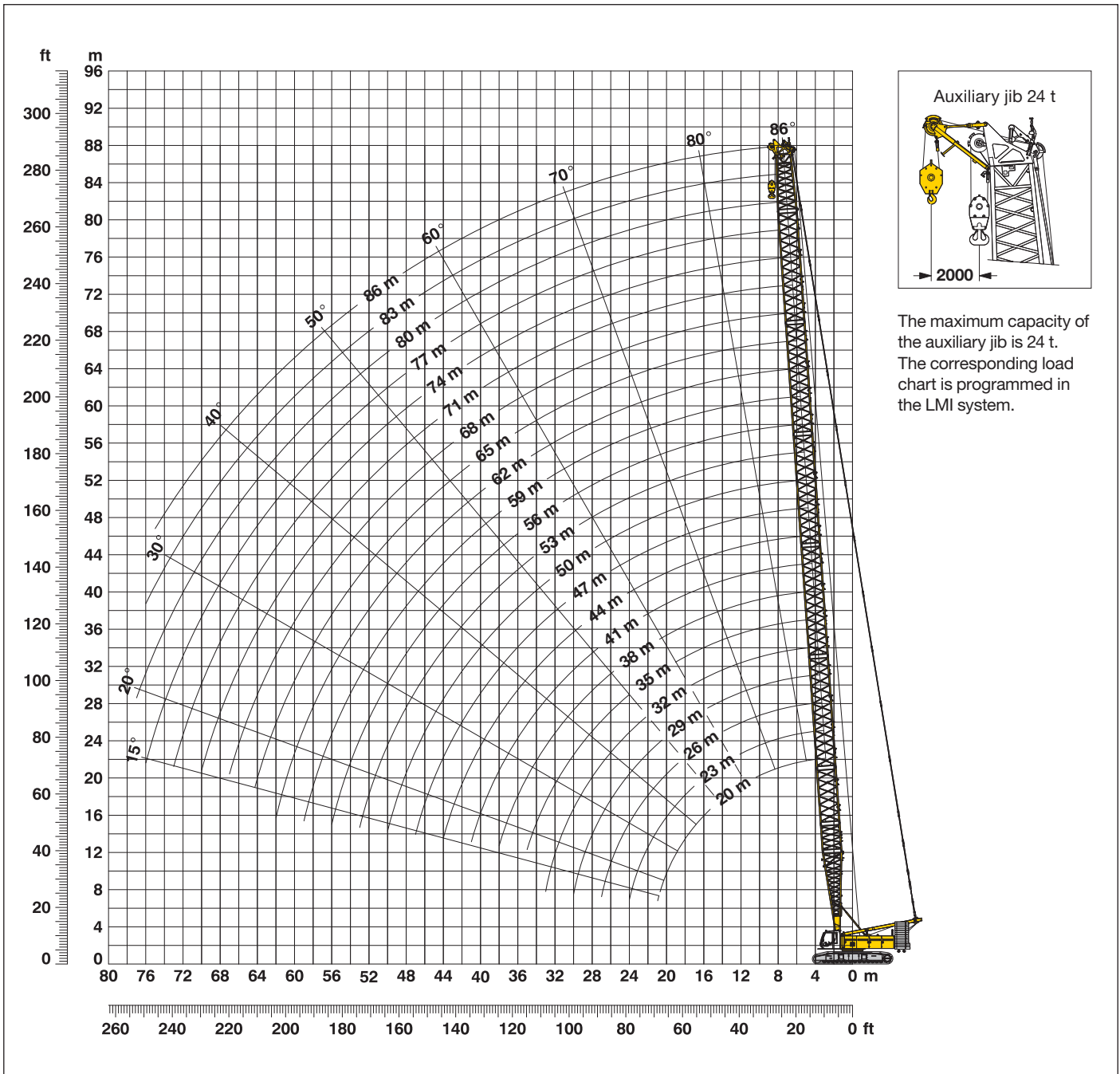


Erecting of main boom and luffing jib



Working position

Working range - main boom (No. 2320.xx) **86° - 15°** **82.3 t counterweight and 36 t carbody counterweight**



Main boom configuration (Table 1 – No. 2320.xx)

Configuration for boom lengths (20 m - 86 m)

Configuration	Length	Amount of boom extensions																						
		1	1	1	1	1	1	1	1	1	1	1	1	1	1	1	1	1	1	1	1			
Boom foot	10 m	1	1	1	1	1	1	1	1	1	1	1	1	1	1	1	1	1	1	1	1			
Boom insert	3 m	1		1		1		1		1		1		1		1		1		1				
Boom insert	6 m		1	1		1	1		1	1		1	1		1	1		1	1		1			
Boom insert	12 m				1	1	1	1	2	2	2	2	3	3	3	3	4	4	4	4	5	5	5	5
Boom head	7 m	1	1	1	1	1	1	1	1	1	1	1	1	1	1	1	1	1	1	1	1	1	1	1
Boom length (m)		20	23	26	29	32	35	38	41	44	47	50	53	56	59	62	65	68	71	74	77	80	83	86

Lift chart for main boom (No. 2320.xx)

82.3 t counterweight and 36 t carbody counterweight

Capacities in metric tonnes for boom lengths (20 m - 86 m) – with 120 kN winches

Radius	Boom length in (m)												Radius	
	20	26	32	38	44	50	56	62	68	74	80	86		
(m)	t	t	t	t	t	t	t	t	t	t	t	t	t	(m)
5.8					122.1									5.8
6				143.5	122.1									6
7			149.9	136.5	117.5	101.4	86.4	72.1						7
8		139.3	132.1	124.2	112.6	96.9	83.4	71.5	59.1	49.8				8
9	128.6	122.4	115.6	109.3	103.6	93.0	80.4	68.1	57.7	49.5	41.3	34.0		9
10	113.8	108.1	102.6	97.5	92.8	88.0	77.1	65.7	56.0	48.1	40.7	33.8		10
12	87.2	87.2	83.5	79.8	76.4	73.1	70.1	61.3	52.9	45.8	39.6	32.7		12
14	70.2	70.2	70.1	67.3	64.7	62.1	59.7	57.3	50.0	43.2	37.6	31.5		14
16	58.5	58.5	58.4	57.9	55.8	53.7	51.7	49.8	47.4	41.3	35.8	30.2		16
18	49.9	49.9	49.7	49.5	48.9	47.1	45.4	43.7	42.1	38.7	34.4	29.2		18
20	43.2	43.3	43.2	42.9	42.6	41.8	40.3	38.8	37.4	36.0	32.4	28.2		20
26		30.2	30.2	29.9	29.7	29.3	28.9	28.4	27.3	26.2	25.2	24.1		26
32			22.5	22.3	22.0	21.7	21.3	20.9	20.5	19.8	19.0	18.0		32
38				17.2	17.0	16.6	16.3	15.9	15.5	15.0	14.6	13.7		38
44					13.4	13.1	12.7	12.3	12.0	11.5	11.1	10.5		44
50						10.4	10.1	9.7	9.3	8.8	8.4	7.9		50
55							8.3	7.9	7.5	7.1	6.6	6.2		55
60								6.4	6.0	5.6	5.2	4.7		60
65									4.8	4.4	4.0	3.5		65
70										3.3	2.9	2.4		70

TAL 10576485 - M00000

Lift chart for main boom (No. 2320.xx)

72.3 t counterweight and 36 t carbody counterweight

Capacities in metric tonnes for boom lengths (20 m - 83 m) – with 120 kN winches

Radius	Boom length in (m)												Radius	
	20	26	32	38	44	50	56	62	68	74	80	83		
(m)	t	t	t	t	t	t	t	t	t	t	t	t	t	(m)
4,1	250.0*													4,1
5	217.0	196.5	173.7											5
6	185.8	180.1	165.5	143.5	122.1									6
7	162.1	152.0	141.3	131.8	117.5	101.4	86.4	72.1						7
8	138.5	129.3	121.3	114.0	107.5	96.9	83.4	71.5	59.1	49.8				8
9	119.4	112.3	106.1	100.3	95.0	90.1	80.4	68.1	57.7	49.5	41.3	37.2		9
10	104.4	99.2	94.1	89.3	85.0	80.9	77.1	65.7	56.0	48.1	40.7	36.9		10
12	79.9	79.8	76.5	73.1	69.9	66.9	64.0	61.3	52.9	45.8	39.6	35.7		12
14	64.3	64.2	64.1	61.5	59.0	56.6	54.4	52.2	50.0	43.2	37.6	34.3		14
16	53.4	53.4	53.3	52.9	50.9	48.9	47.0	45.2	43.5	41.3	35.8	32.7		16
18	45.5	45.5	45.4	45.1	44.5	42.8	41.2	39.6	38.1	36.6	34.4	31.5		18
20	39.3	39.4	39.3	39.0	38.7	37.9	36.5	35.1	33.8	32.4	31.2	30.0		20
26		27.4	27.4	27.1	26.8	26.4	26.1	25.5	24.4	23.4	22.4	21.9		26
32			20.3	20.1	19.8	19.4	19.0	18.6	18.2	17.5	16.7	16.2		32
38				15.3	15.1	14.8	14.4	14.0	13.6	13.1	12.5	12.1		38
44					11.8	11.5	11.2	10.8	10.4	9.9	9.5	9.2		44
50						9.0	8.7	8.3	7.9	7.4	7.0	6.8		50
55							7.0	6.6	6.3	5.8	5.4	5.2		55
60								5.3	4.9	4.5	4.0	3.8		60
65									3.7	3.3	2.9	2.7		65
70										2.3				70

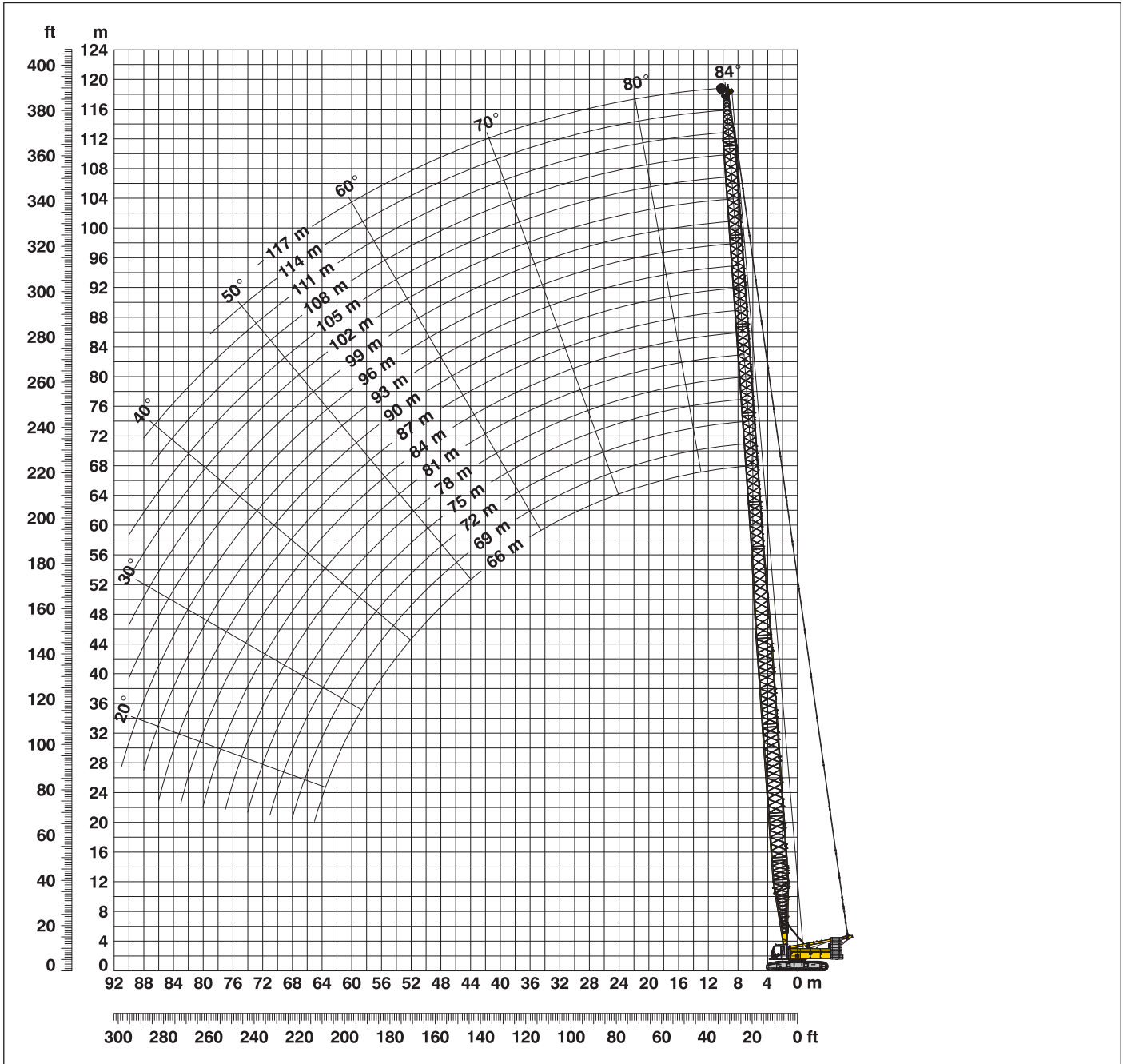
TAL 10576485 - M00000

Above lift chart is for reference only. For actual lift duty please refer to lift chart in operator's cab or manual.

*) Capacities over 220 t require a special heavy duty boom head.

L-boom high reach (No. 2320/1916.xx) **66 m - 117 m**

Working range **86° - 15°**



L-boom configuration with 43 m main boom (No. 2320.xx/1916.xx)

Configuration for L-boom lengths (60.5 m - 92.6 m)

Configuration	Length	Amount of boom and luffing jib extensions																		
		1	1	1	1	1	1	1	1	1	1	1	1	1	1	1	1	1	1	1
Boom foot	10 m	1	1	1	1	1	1	1	1	1	1	1	1	1	1	1	1	1	1	1
Boom insert	3 m	1	1	1	1	1	1	1	1	1	1	1	1	1	1	1	1	1	1	1
Boom insert	6 m	1	1	1	1	1	1	1	1	1	1	1	1	1	1	1	1	1	1	1
Boom insert	12 m	2	2	2	2	2	2	2	2	2	2	2	2	2	2	2	2	2	2	2
Tapered	12 m	1	1	1	1	1	1	1	1	1	1	1	1	1	1	1	1	1	1	1
Luffing insert	3 m	1		1		1		1		1		1		1		1		1		1
Luffing insert	6 m		1	1		1	1	1		1	1		1	1		1	1		1	1
Luffing insert	12 m				1	1	1	1	2	2	2	2	3	3	3	3	4	4	4	4
Luffing jib head	8 m	1	1	1	1	1	1	1	1	1	1	1	1	1	1	1	1	1	1	1
Max. L-boom length (m)		66	69	72	75	78	81	84	87	90	93	96	99	102	105	108	111	114	117	

Lift chart for L-boom (No. 2320/1916.xx)

Main boom length 43 m

Capacities in metric tonnes 82.3 t counterweight and 36 t carbody counterweight						
Radius	Boom length in (m)					
	66	75	90	99	108	117
(m)	t	t	t	t	t	t
8.9	60.9					
10	58.7	39.5				
12	51.2	37.0	23.2			
14	44.8	34.4	21.5	15.8	12.1	
16	39.5	32.0	19.9	14.6	11.4	8.8
18	35.3	30.0	18.6	13.7	10.6	8.1
20	31.8	27.7	17.3	12.7	10.0	7.6
22	29.2	25.5	16.5	11.9	9.3	7.2
24	26.6	23.8	15.5	11.3	8.7	6.7
26	24.5	22.0	14.7	10.7	8.3	6.4
28	22.9	20.4	14.1	10.2	7.9	6.1
30	21.0	19.1	13.5	9.8	7.6	5.8
32	19.5	17.9	12.9	9.5	7.3	5.5
34	18.3	16.8	12.4	9.1	7.1	5.3
36	17.2	15.8	12.1	8.7	6.8	5.1
38	16.3	15.0	11.7	8.4	6.5	4.9
40	15.5	14.2	11.2	8.2	6.3	4.7
42	14.8	13.4	10.8	7.9	6.1	4.5
44	14.0	12.7	10.5	7.6	5.9	4.4
46	13.2	12.1	10.2	7.3	5.7	4.2
48	12.5	11.5	9.8	7.1	5.4	4.1
50	11.7	11.0	9.3	6.9	5.3	3.9
55	10.0	9.7	8.4	6.3	4.9	3.6
60	8.5	8.5	7.5	5.7	4.4	3.3
65	7.3	7.3	6.5	5.2	4.0	2.9
70		6.3	5.7	4.7	3.6	2.6
80			4.2	3.7	3.0	2.0
85			3.5	3.1	2.6	
90				2.7	2.1	
95				2.2		

TLT 10576485 - M00000

Main boom length 55 m

Capacities in metric tonnes 82.3 t counterweight and 36 t carbody counterweight						
Radius	Boom length in (m)					
	78	90	96	102	108	114
(m)	t	t	t	t	t	t
10.2	43.8					
12	43.0	28.3				
14	40.7	26.6	23.3	19.0	15.3	
16	37.7	24.9	21.8	17.7	14.4	12.0
18	33.2	23.5	20.7	16.6	13.4	11.2
20	30.0	22.1	19.4	15.7	12.7	10.5
22	26.8	21.1	18.4	14.7	11.9	10.0
24	24.4	19.9	17.6	14.0	11.2	9.4
26	22.5	18.9	16.8	13.4	10.7	9.0
28	20.5	18.2	16.1	12.8	10.2	8.6
30	18.8	17.1	15.6	12.3	9.8	8.2
32	17.6	15.7	14.8	11.9	9.5	7.9
34	16.2	14.5	13.7	11.5	9.2	7.6
36	15.0	13.6	12.8	11.0	8.8	7.4
38	14.0	12.7	12.0	10.6	8.5	7.1
40	13.2	11.8	11.3	10.3	8.2	6.9
42	12.5	10.9	10.5	10.1	8.0	6.7
44	11.9	10.2	9.8	9.4	7.8	6.5
46	11.3	9.7	9.1	8.7	7.3	6.3
48	10.9	9.2	8.6	8.1	6.9	6.0
50	10.5	8.7	8.1	7.6	6.5	5.7
55	9.0	7.8	7.2	6.7	5.8	5.1
60	7.7	6.9	6.4	5.9	5.1	4.6
65	6.5	5.8	5.6	5.3	4.5	4.0
70	5.4	5.0	4.7	4.5	4.0	3.5
75	4.5	4.3	4.0	3.7	3.2	3.0
80		3.6	3.3	3.1	2.6	2.3
85		2.9	2.8	2.6	2.1	
90			2.1	2.1		

TLT 10576485 - M00000

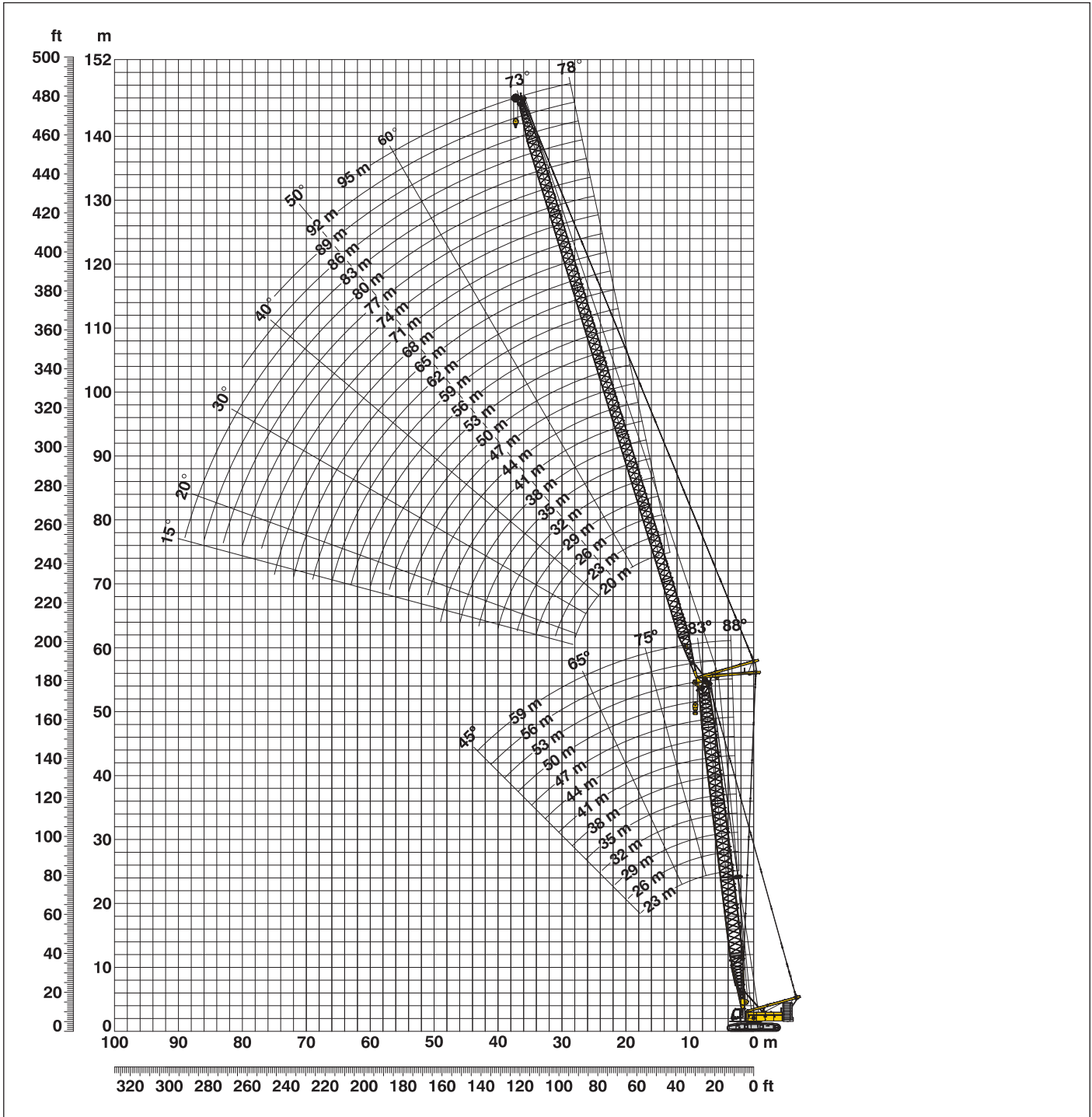
Above lift chart is for reference only. For actual lift duty please refer to lift chart in operator's cab or manual.

L-boom configuration with 55 m main boom (No. 2320.xx/1916.xx)

Configuration for L-boom lengths (72.5 m - 92.9 m)														
	Length	Amount of boom and luffing jib extensions												
Boom foot	10 m	1	1	1	1	1	1	1	1	1	1	1	1	1
Boom insert	3 m	1	1	1	1	1	1	1	1	1	1	1	1	1
Boom insert	6 m	1	1	1	1	1	1	1	1	1	1	1	1	1
Boom insert	12 m	3	3	3	3	3	3	3	3	3	3	3	3	3
Tapered	12 m	1	1	1	1	1	1	1	1	1	1	1	1	1
Luffing insert	3 m	1		1		1		1		1		1		1
Luffing insert	6 m		1	1			1	1			1	1		
Luffing insert	12 m				1	1	1	1	2	2	2	2	3	3
Luffing jib head	8 m	1	1	1	1	1	1	1	1	1	1	1	1	1
Max. L-boom length (m)		78	81	84	87	90	93	96	99	102	105	108	111	114

Working range - luffing jib (No. 1916.xx) 78° - 15°

Main boom 88° - 45°



Boom configuration for main boom lengths (23 m - 59 m) - see table 1 on page 10
Jib configuration for jib lengths (20 m - 95 m)

	Length	Amount of luffing jib extensions																									
Luffing jib foot	7 m	1	1	1	1	1	1	1	1	1	1	1	1	1	1	1	1	1	1	1	1	1	1				
Luffing jib insert	3 m		1	1	1	1	1	1	1	1	1	1	1	1	1	1	1	1	1	1	1	1	1				
Luffing jib insert	6 m	1	1			1	1			1	1			1	1			1	1			1	1				
Luffing jib insert	12 m			1	1	1	1	2	2	2	2	3	3	3	3	4	4	4	4	5	5	5	5	6	6	6	6
Luffing jib head	7 m	1	1	1	1	1	1	1	1	1	1	1	1	1	1	1	1	1	1	1	1	1	1	1	1	1	1
Luffing jib length (m)		20	23	26	29	32	35	38	41	44	47	50	53	56	59	62	65	68	71	74	77	80	83	86	89	92	95

Lift chart - luffing jib (No.1916.xx)

Main boom 88°

Main boom 23 m

Radius (m)	Jib length in (m)							
	20	29	41	53	62	71	83	95
7.9	t	t	t	t	t	t	t	t
10	70.7	61.8						
13	63.5	54.0	38.2					
15	53.4	48.4	35.4	25.8				
17	45.7	43.0	32.5	24.8	18.2			
19	38.4	37.1	30.1	23.7	17.6	13.0		
22	30.8	30.0	26.4	22.1	16.5	12.5	8.4	
24		26.9	24.3	20.9	15.9	12.2	8.2	5.0
28		22.2	20.4	18.8	14.8	11.6	7.9	5.0
30		20.6	18.9	17.7	14.3	11.4	7.8	4.9
38			14.5	13.4	11.8	10.3	7.2	4.7
42			12.9	11.9	10.6	9.4	6.9	4.4
50				9.6	8.4	7.9	6.0	4.0
60					6.5	5.9	4.8	3.2
70						4.4	3.6	2.4
80							2.5	

Main boom 35 m

Radius (m)	Jib length in (m)							
	20	29	41	53	62	71	83	95
8.3	t	t	t	t	t	t	t	t
11	69.2	51.6						
13	57.8	49.1	34.4					
16	45.8	42.5	31.7	22.6				
18	39.6	38.1	29.7	21.9	15.8			
19	36.8	35.3	28.8	21.6	15.6	11.5		
22	30.4	28.9	25.6	20.3	15.0	11.2	7.4	
24		26.1	23.9	19.5	14.6	11.0	7.3	4.4
32		12.1	17.5	16.0	13.4	10.4	7.1	4.3
42			13.1	12.0	10.6	9.1	6.6	4.1
50				9.8	8.6	7.9	6.0	3.8
55				8.0	7.6	6.9	5.6	3.5
60					6.8	6.0	5.0	3.2
70						4.6	3.7	2.4
75							3.2	2.0
80							2.6	

Main boom 44 m

Radius (m)	Jib length in (m)							
	20	29	41	53	62	71	83	95
8.7	t	t	t	t	t	t	t	t
11	57.8	44.0						
13	49.7	42.5	30.4					
16	40.8	37.3	28.7	19.8				
18	35.9	33.3	27.0	19.4	14.1			
20	31.5	29.3	25.2	19.0	13.9	10.3		
22	28.1	26.0	22.9	18.5	13.7	10.1	6.6	
26		21.6	19.4	16.9	13.4	9.9	6.5	3.9
32		17.6	15.7	14.4	12.5	9.7	6.5	3.9
40			12.6	11.5	10.2	8.9	6.2	3.8
44			11.2	10.3	9.2	8.0	6.1	3.8
55				8.0	6.9	6.1	4.9	3.3
60					6.2	5.3	4.4	3.0
70						4.1	3.2	2.2
75							2.7	
80							2.2	

Main boom 53 m

Radius (m)	Jib length in (m)							
	20	29	41	53	62	71	83	95
9	t	t	t	t	t	t	t	t
11	46.6	35.7						
14	39.9	33.3	24.6					
16	35.3	31.2	23.8	16.9				
18	31.6	28.8	22.8	16.5	12.4			
20	27.9	26.0	21.7	16.0	12.2	9.1		
24	12.1	21.3	18.8	15.0	11.7	8.8	5.8	
26		19.6	17.4	14.3	11.6	8.8	5.8	3.3
32		16.2	14.3	12.4	10.8	8.6	5.8	3.3
40			11.5	10.0	9.0	8.1	5.7	3.3
44			10.4	9.0	8.1	7.2	5.7	3.3
55				7.0	6.1	5.4	4.3	2.8
60					5.5	4.7	3.7	2.4
65						4.1	3.1	2.1
70						3.6	2.6	
75							2.2	

Main boom 56 m

Radius (m)	Jib length in (m)							
	20	29	35	41	53	62	71	74
9.1	t	t	t	t	t	t	t	t
11	43.1	32.6						
13	38.8	31.5	27.1					
14	37.7	30.7	26.4	22.8				
16	33.8	29.0	25.3	21.9	15.7			
18	30.5	27.2	24.0	21.0	15.3	11.9		
20	27.0	24.7	22.4	20.1	14.8	11.7	8.7	
22	24.4	22.2	21.0	18.8	14.3	11.4	8.6	7.8
24	12.1	20.4	19.0	17.9	13.8	11.1	8.4	7.7
32		15.6	14.4	13.7	11.9	10.3	8.2	7.6
38			12.4	11.6	10.1	9.1	8.0	7.4
44				10.0	8.6	7.9	6.8	6.6
55					6.7	5.9	5.1	4.9
60						5.3	4.4	4.2
70							3.4	3.2
75							2.7	

Main boom 59 m

Radius (m)	Jib length in (m)					
	20	29	35	41	50	
9.2	t	t	t	t	t	
12	39.1	29.4				
13	35.7	28.8	24.8			
14	34.9	28.0	24.2	20.9		
16	31.8	26.8	23.3	20.1	16.0	
18	29.0	25.5	22.3	19.3	15.4	
20	25.8	23.5	21.0	18.6	14.8	
22	23.4	21.2	20.0	17.6	14.3	
24	12.1	19.5	18.2	16.9	13.8	
32		15.0	13.8	13.1	11.7	
36			12.5	11.7	10.5	
38			11.9	11.1	10.0	
42				10.2	9.0	
44				9.7	8.6	
48					7.9	
50					7.6	

TLT 10576485 - M0000

Capacities in metric tonnes with luffing jib (No. 1916.xx), 82.3 counterweight + 36 t carbody counterweight. Above lift chart is for reference only. For actual lift duty and complete chart with all available configurations please refer to lift chart in operator's cab or manual.

Lift chart - luffing jib (No. 1916.xx)

Main boom 83°

Main boom 23 m

Radius (m)	Jib length in (m)							
	20	29	44	53	62	71	83	95
11.7	t	t	t	t	t	t	t	t
15	70.7							
19	63.6	53.8						
22	46.2	43.9	29.5					
24	37.1	36.3	26.8	22.8				
28	32.1	32.5	25.0	21.8	16.1			
32		22.1	22.1	20.4	15.4	11.9		
34			19.3	19.0	14.6	11.4	7.9	
42			18.2	17.9	14.4	11.2	7.8	4.9
48			14.4	14.4	12.2	10.1	7.1	4.6
50			10.8	11.9	10.7	9.1	6.6	4.2
55				11.3	10.2	8.9	6.4	4.2
65				9.7	9.0	8.0	6.1	3.8
70					6.6	6.5	5.0	3.2
75						5.5	4.5	2.7
85							4.0	2.3
							2.7	

Main boom 35 m

Radius (m)	Jib length in (m)							
	20	29	41	53	62	71	83	95
13.1	t	t	t	t	t	t	t	t
16	64.5							
20	54.6	47.5						
24	44.0	41.8	30.1					
26	34.0	33.9	26.8	20.3				
28	30.1	30.7	25.5	19.8	14.6			
32		27.8	24.2	19.4	14.4	10.9		
34		23.5	22.0	18.6	13.9	10.8	7.2	
36		21.7	20.8	18.1	13.6	10.7	7.2	
38			19.4	17.6	13.4	10.5	7.1	4.3
46			18.2	17.1	13.1	10.3	7.1	4.3
55			14.1	13.9	12.2	9.5	6.6	4.1
65				10.8	9.8	8.5	6.0	3.7
75					7.5	7.2	5.4	3.1
80						5.3	4.8	2.5
85							4.1	2.2
							3.3	

Main boom 44 m

Radius (m)	Jib length in (m)							
	20	29	41	53	62	71	83	95
14.2	t	t	t	t	t	t	t	t
17	51.6							
22	47.4	39.6						
24	36.9	34.6	26.3					
26	32.2	31.1	25.1	18.3				
28	29.2	28.4	23.8	18.1				
30		26.0	22.8	18.0	13.3			
34		23.8	21.4	17.7	13.3	9.8		
36		20.6	19.4	17.0	12.9	9.8	6.5	
38		12.1	18.1	16.3	12.7	9.7	6.5	
46			16.9	15.6	12.6	9.6	6.5	3.9
55			13.3	12.9	11.6	9.0	6.2	3.8
65				10.1	9.2	8.0	5.7	3.6
75					7.1	6.5	5.0	3.0
80						4.9	4.3	2.4
85							3.7	2.2
							3.0	

Main boom 53 m

Radius (m)	Jib length in (m)							
	20	29	41	53	62	71	83	95
15.3	t	t	t	t	t	t	t	t
18	40.3							
22	37.6	31.5						
26	33.3	28.8	22.5					
28	27.0	25.4	21.1	15.6				
32	24.7	23.8	20.4	15.5	11.7			
34		20.4	18.4	15.1	11.6	8.8		
36		19.2	17.5	14.9	11.6	8.8	5.8	
38		18.0	16.6	14.3	11.5	8.7	5.8	
42			15.6	13.6	11.4	8.7	5.8	3.3
48			13.8	12.5	10.8	8.7	5.7	3.3
55			11.8	10.6	9.9	8.2	5.7	3.3
60				9.0	8.2	7.6	5.3	3.3
65				7.5	7.2	6.6	5.1	3.0
75					6.4	5.8	4.6	2.8
80						4.4	3.6	2.2
85							2.6	

Main boom 56 m

Radius (m)	Jib length in (m)							
	20	29	35	41	53	62	71	74
15.7	t	t	t	t	t	t	t	t
19	37.4							
22	34.6	29.0						
26	31.7	27.0	23.9	20.8				
28	26.4	24.2	22.1	19.8	14.6			
32	24.3	23.0	21.0	19.3	14.6	11.2		
36		19.7	18.9	17.7	14.2	11.2	8.3	7.6
40		17.4	16.5	16.1	13.6	11.1	8.3	7.6
42			14.7	14.2	12.5	10.9	8.3	7.6
46			13.9	13.4	12.0	10.5	8.3	7.6
48				12.1	10.8	9.8	8.1	7.5
55				11.4	10.2	9.6	7.9	7.4
60					8.6	8.0	7.3	7.0
65					7.6	7.0	6.3	6.2
75						6.3	5.5	5.4
80							4.2	4.1
								3.5

Main boom 59 m

Radius (m)	Jib length in (m)					
	20	29	35	41	50	
16	t	t	t	t	t	
19	34.4					
22	32.1	26.9				
24	29.6	25.1	22.2			
26	27.5	24.2	21.3	18.8		
28	25.4	23.0	20.7	18.4	14.6	
32	23.5	22.0	19.8	18.0	14.5	
36		19.0	18.1	16.7	14.2	
38		16.8	15.9	15.4	13.4	
40		12.1	15.0	14.4	12.8	
42			14.2	13.6	12.3	
44			13.4	12.8	11.8	
46				12.2	11.2	
48				11.6	10.6	
50				11.0	10.0	
55					9.6	
					8.6	

TLT 10576485 - M00000

Capacities in metric tonnes with luffing jib (No. 1916.xx), 82.3 counterweight + 36 t carbody counterweight. Above lift chart is for reference only. For actual lift duty and complete chart with all available configurations please refer to lift chart in operator's cab or manual.

Lift chart - luffing jib (No. 1916.xx)

Main boom 75°

Main boom 23 m

Radius (m)	Jib length in (m)							
	20	29	41	53	62	71	83	95
18	t	t	t	t	t	t	t	t
22	50.5							
28	39.8	39.2						
32	12.1	29.3	26.7					
36		24.9	23.8	20.3				
40		21.5	21.1	19.5	14.5			
44			18.3	17.7	13.9	10.8		
48			16.3	15.8	13.2	10.4	7.0	
50			14.3	14.1	12.6	10.0	6.8	
55				13.3	12.1	9.8	6.7	4.3
60				11.7	10.7	9.3	6.4	4.0
65				9.6	9.6	8.3	6.1	3.7
70					8.3	7.5	5.7	3.4
75						6.7	5.1	3.1
80						5.9	4.7	2.8
85							4.3	2.5
85							3.8	2.2

Main boom 35 m

Radius (m)	Jib length in (m)							
	20	29	41	53	62	71	83	95
22	t	t	t	t	t	t	t	t
26	36.9							
30	30.9	29.8						
36	25.9	25.6	24.2					
40		20.4	19.9	18.6				
44		12.1	17.4	16.6	13.4			
48			15.4	14.8	13.0	10.1		
50			13.7	13.2	12.6	9.8	6.6	
55			13.0	12.5	12.1	9.6	6.5	
60				11.0	10.6	9.3	6.2	3.9
65				9.7	9.3	8.8	6.0	3.6
70					8.2	7.7	5.8	3.4
75					7.3	6.8	5.6	3.1
80						6.0	5.4	2.9
85						5.3	4.8	2.6
90							4.2	2.4
90							3.7	2.2

Main boom 44 m

Radius (m)	Jib length in (m)							
	20	29	41	53	62	71	83	95
24	t	t	t	t	t	t	t	t
28	31.0							
32	26.6	25.2						
38	22.9	22.0	20.6					
42		18.2	17.1	15.9				
46		16.0	15.4	14.2	12.7			
48			13.8	12.8	12.0	9.4		
50			13.0	12.1	11.4	9.3		
55			12.3	11.6	10.9	9.2	6.2	
60				10.3	9.6	8.8	6.0	3.7
65				9.0	8.6	7.8	5.8	3.5
70				8.0	7.6	6.9	5.6	3.3
75					6.8	6.1	5.2	3.1
80						5.5	4.6	2.9
85						4.9	4.0	2.6
90							3.5	2.4
90							3.1	2.2

Main boom 53 m

Radius (m)	Jib length in (m)							
	20	29	41	53	62	71	83	95
25.2	t	t	t	t	t	t	t	t
30	26.7							
34	22.5	21.3						
36	19.8	18.7	17.3					
40	12.1	17.6	16.3					
44		15.8	14.6	13.4				
48		14.2	13.1	12.0	11.2			
50			11.9	10.8	10.1	8.7		
55			11.3	10.3	9.6	8.6		
60			10.1	9.1	8.4	7.6	5.6	
65				8.1	7.5	6.7	5.5	3.1
70				7.3	6.6	5.9	4.9	3.1
75					5.9	5.2	4.3	2.9
80					5.3	4.6	3.7	2.7
85						4.0	3.2	2.3
90						3.5	2.7	
90							2.3	

Main boom 56 m

Radius (m)	Jib length in (m)							
	20	29	35	41	53	62	71	74
26	t	t	t	t	t	t	t	t
30	25.0							
34	21.7	20.5						
36	19.1	18.0	17.3					
40	18.0	17.0	16.3	15.7				
44		15.2	14.5	14.0	12.8			
46		13.7	13.1	12.6	11.5	10.7		
48			12.4	11.9	10.9	10.1		
50			11.9	11.4	10.3	9.6	8.3	
55			11.3	10.8	9.8	9.1	8.2	7.5
60				9.7	8.7	8.0	7.2	7.0
65					7.7	7.1	6.3	6.1
70					6.9	6.3	5.5	5.4
75						5.6	4.8	4.7
80						5.0	4.2	4.1
85							3.7	3.6
85							3.3	3.1

Main boom 59 m

Radius (m)	Jib length in (m)					
	20	29	35	41	50	
26.7	t	t	t	t	t	
28	23.4					
30	22.4					
32	20.9					
34	19.6	18.5				
36	18.4	17.3	16.6			
38	17.3	16.3	15.6	15.0		
40		15.4	14.8	14.2		
42		14.6	14.0	13.4	12.6	
44		13.8	13.2	12.7	11.9	
46		13.1	12.5	12.0	11.3	
48		12.1	11.9	11.4	10.7	
50			10.9	10.4	9.7	
55				9.2	8.6	
60					7.6	
65					6.8	

TLT 10576485 - M00000

Capacities in metric tonnes with luffing jib (No. 1916.xx), 82.3 counterweight + 36 t carbody counterweight. Above lift chart is for reference only. For actual lift duty and complete chart with all available configurations please refer to lift chart in operator's cab or manual.

Lift chart - luffing jib (No. 1916.xx)

Main boom 65°

Main boom 23 m

Radius (m)	Jib length in (m)							
	20	29	41	53	62	71	83	95
26	t	t	t	t	t	t	t	t
30	30.7							
32	25.7	25.4						
38	12.1	23.4						
40		18.9	18.4					
44		17.7	17.3					
48			15.3	14.7				
50			13.6	13.1				
55			12.9	12.4	12.0			
60				10.8	10.4	9.6		
65				9.5	9.2	8.7		
70					8.1	7.6	6.0	
75					7.2	6.7	5.7	3.2
80						6.0	5.4	3.0
85						5.3	4.7	2.7
90							4.1	2.4
95							3.6	2.2

Main boom 35 m

Radius (m)	Jib length in (m)							
	20	29	41	53	62	71	83	95
29.2	t	t	t	t	t	t	t	t
34	24.0							
36	20.2							
40	18.8	18.4						
42		16.1						
44		15.1	14.5					
50		14.2	13.6					
55			11.5	10.9				
60			10.1	9.5	9.1			
65				8.3	7.9	7.3		
70				7.4	7.0	6.4		
75					6.1	5.6	4.8	
80					5.4	4.9	4.2	3.0
85						4.3	3.6	2.8
90						3.8	3.1	2.3
95							2.7	
							2.3	

Main boom 44 m

Radius (m)	Jib length in (m)						
	20	29	41	53	62	71	83
33	t	t	t	t	t	t	t
38	19.2						
40	16.1						
46	15.0	14.6					
48		12.1	11.5				
55		11.5	10.9				
60			9.0	8.2			
65			7.9	7.3	6.6		
70				6.4	5.8	5.1	
75				5.6	5.2	4.4	3.5
80					4.6	3.8	3.0
85					4.0	3.3	2.5
90						2.9	2.0
						2.5	

Main boom 53 m

Radius (m)	Jib length in (m)					
	20	29	41	53	62	71
36.8	t	t	t	t	t	t
40	14.7					
42	13.4					
44	12.7	11.8				
48	11.9	11.2				
50		10.1				
55		9.6	8.5			
60			7.5			
65			6.7	5.7		
70			5.9	5.0	4.4	
75				4.4	3.8	3.0
80				3.9	3.3	2.5
85					2.8	2.1
					2.4	

Main boom 56 m

Radius (m)	Jib length in (m)							
	20	29	35	41	53	62	71	74
38.1	t	t	t	t	t	t	t	t
44	13.3							
46	11.3	10.4						
48	10.7	9.9						
55		9.4	8.8					
60			7.4	6.9				
65			6.6	6.1	5.2			
70				5.4	4.5	3.9		
75					3.9	3.3	2.5	2.4
80					3.4	2.8	2.1	
85						2.4		
						2.0		

Main boom 59 m

Radius (m)	Jib length in (m)				
	20	29	35	41	50
39.4	t	t	t	t	t
42	12.0				
44	11.2				
46	10.6				
48	10.0	9.2			
50		8.7	8.1		
55		8.3	7.7		
60		7.3	6.8	6.3	
65			6.0	5.6	4.9
70				4.9	4.3
75				3.7	
				3.3	

TLT 10576485 - M00000

Capacities in metric tonnes with luffing jib (No. 1916.xx), 82.3 counterweight + 36 t carbody counterweight. Above lift chart is for reference only. For actual lift duty and complete chart with all available configurations please refer to lift chart in operator's cab or manual.

Lift chart - luffing jib (No. 1916.xx)

Main boom 45°

Main boom 23 m

Radius (m)	Jib length in (m)						
	20	29	41	53	62	71	83
35.4	t	t	t	t	t	t	t
38	18.9						
44		13.9					
46		13.1					
55			9.9				
65				7.2			
70				6.3	5.9		
75					5.2		
80						4.1	
85						3.6	
90							2.5
95							2.1

Main boom 35 m

Radius (m)	Jib length in (m)					
	20	29	41	53	62	
43.8	t	t	t	t	t	
46	11.9					
55		8.3				
65			5.9			
75				4.0		
80					3.0	
85					2.6	

Main boom 44 m

Radius (m)	Jib length in (m)			
	20	29	41	53
50.2	t	t	t	t
60	8.0	5.7		
70			3.7	
80				2.1

Main boom 53 m

Radius (m)	Jib length in (m)	
	20	29
56.6	t	t
65	4.9	3.3

Main boom 56 m

Radius (m)	Jib length in (m)	
	20	29
58.7	t	t
60	3.9	
70	3.8	2.1

Main boom 59 m

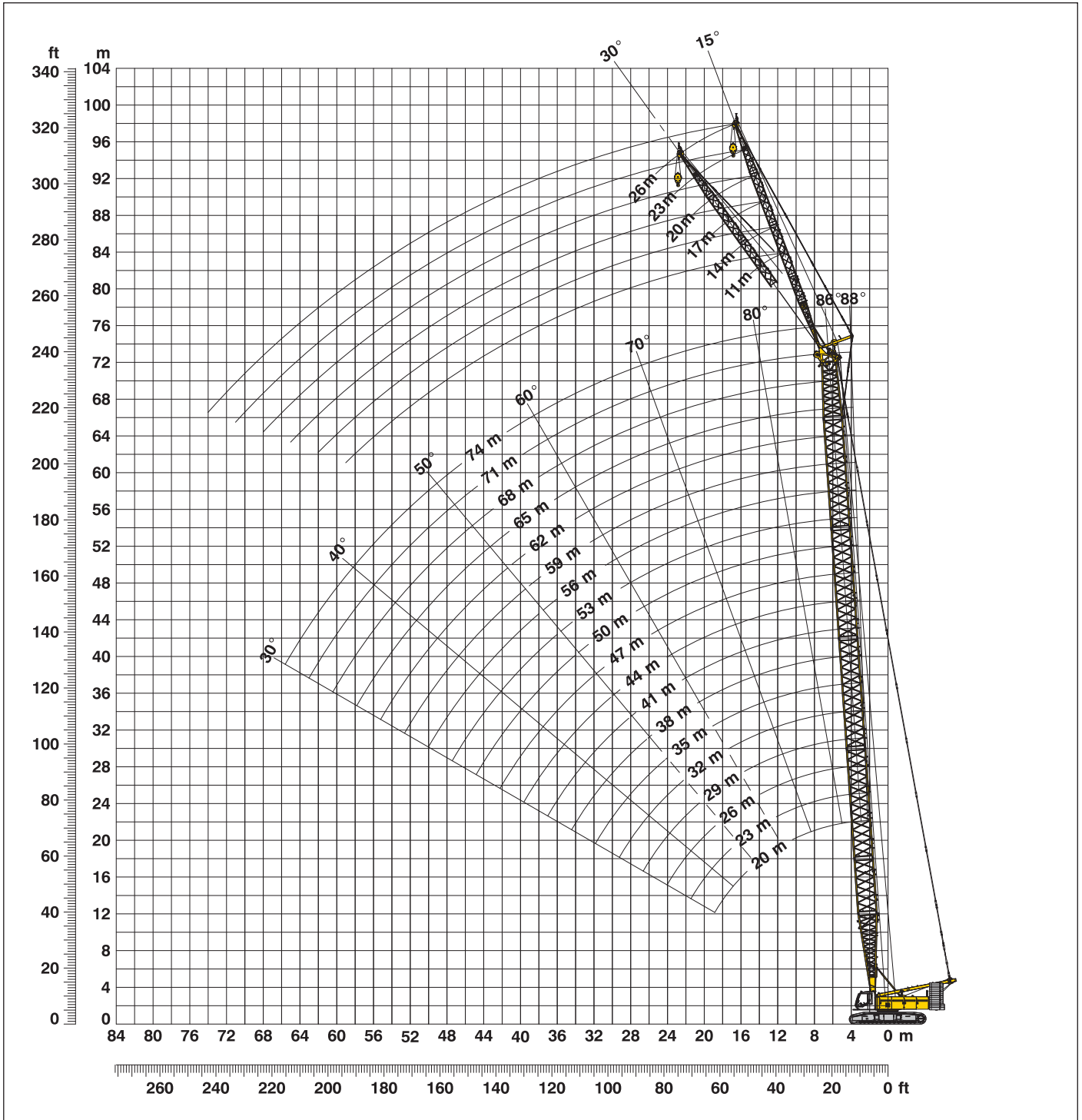
Radius (m)	Jib length in (m)
	20
60.8	t
	2.9

TLT 10576485 - M00000

Capacities in metric tonnes with luffing jib (No. 1916.xx), 82.3 counterweight + 36 t carbody counterweight. Above lift chart is for reference only. For actual lift duty and complete chart with all available configurations please refer to lift chart in operator's cab or manual.

Working range - fixed jib (No. 1008.xx) 15° and 30°

Main boom 88° - 30°



Boom configuration for boom lengths (20 m - 77 m) – see table 1 on page 10

Fixed jib configuration for fixed jib lengths (11 m - 26 m)

	Length	Amount of fixed jib extensions					
Fixed jib foot	5.5 m	1	1	1	1	1	1
Fixed jib insert	3 m		1		1		1
Fixed jib insert	6 m			1	1	2	2
Fixed jib head	5.5 m	1	1	1	1	1	1
Fixed jib length (m)		11	14	17	20	23	26

Lift chart - fixed jib (No. 1008.xx)

Offset 15°

Main boom 20 m

Radius	Fixed jib length in (m)			
	11	14	20	26
(m)	t	t	t	t
9	35.9	35.5		
11	35.9	34.0	28.9	
12	35.9	33.2	27.7	19.8
14	35.9	31.5	25.5	18.3
16	35.1	29.9	23.9	17.1
20	32.8	26.5	20.0	15.1
24	27.5	23.2	17.0	13.4
28	24.0	20.7	14.8	11.7
30	23.0	19.5	13.8	11.1
32		18.4	13.0	10.5
38			11.3	9.0
44				7.9

Main boom 29 m

Radius	Fixed jib length in (m)			
	11	14	20	26
(m)	t	t	t	t
8	35.9	35.9		
10	35.9	35.2	30.2	
12	35.9	34.2	28.5	19.7
16	35.9	32.0	25.0	17.3
20	34.7	29.9	21.9	15.4
28	27.6	24.6	17.1	13.0
32	23.0	21.8	15.3	11.6
36	19.3	19.7	13.7	10.6
38	17.8	18.2	13.2	10.1
40		16.8	12.7	9.7
46			11.4	8.7
50				8.1

Main boom 38 m

Radius	Fixed jib length in (m)			
	11	14	20	26
(m)	t	t	t	t
6.3	35.9			
8	35.9	35.8		
10	35.9	35.2	29.4	
13	35.9	33.6	26.8	18.9
16	35.9	32.3	24.7	17.3
20	35.9	30.3	22.6	15.6
28	27.0	26.2	18.6	13.5
36	18.7	19.0	15.1	11.5
46	12.5	12.8	12.5	9.5
48		11.9	12.1	9.2
55			9.7	8.4
60				7.9

Main boom 47 m

Radius	Fixed jib length in (m)			
	11	14	20	26
(m)	t	t	t	t
6.6	35.9			
8	35.9	35.8		
11	35.9	34.5	28.3	
13	35.9	33.7	26.9	18.5
16	35.9	32.6	25.1	17.1
20	34.8	31.1	22.9	15.7
28	26.4	26.8	19.8	13.7
36	18.1	18.4	16.8	12.3
50	10.2	10.5	11.0	9.7
55		8.7	9.1	9.0
60			7.6	8.0
65				6.7

Main boom 56 m

Radius	Fixed jib length in (m)			
	11	14	20	26
(m)	t	t	t	t
6.9	35.9			
9	35.9	34.5		
11	35.9	33.7	26.6	
13	35.9	32.8	25.5	17.8
20	34.3	29.9	22.0	15.5
28	25.4	25.6	19.5	13.7
36	17.4	17.8	17.3	12.7
44	12.3	12.6	13.1	11.2
55	7.8	8.0	8.5	8.9
60	6.2	6.5	7.0	7.4
70			4.5	4.9
75				3.9

Main boom 62 m

Radius	Fixed jib length in (m)			
	11	14	20	26
(m)	t	t	t	t
7.1	35.9			
9	35.9	33.9		
11	35.9	33.2	25.5	
13	35.9	32.4	24.7	17.3
20	32.7	28.9	21.6	15.2
28	24.3	24.5	19.3	13.6
36	17.0	17.3	17.7	12.6
44	11.8	12.1	12.7	11.5
55	7.3	7.6	8.1	8.5
65	4.5	4.8	5.2	5.6
75			3.1	3.5
80				2.6

Main boom 68 m

Radius	Fixed jib length in (m)			
	11	14	20	26
(m)	t	t	t	t
7.3	35.9			
9	35.9	32.8		
11	35.8	32.3	24.3	
14	34.9	30.9	23.2	16.7
20	31.1	27.8	20.9	14.9
28	23.4	23.5	18.8	13.4
36	16.3	16.5	16.9	12.5
44	11.4	11.7	12.3	11.7
55	6.9	7.1	7.6	8.1
70	3.0	3.2	3.7	4.1
75		2.3	2.7	3.1
80				2.2

Main boom 71 m

Radius	Fixed jib length in (m)			
	11	14	20	26
(m)	t	t	t	t
7.4	35.8			
9	35.2	32.2		
11	33.9	31.0	24.0	
14	32.6	29.4	22.8	16.3
16	31.9	28.7	21.9	15.8
20	29.3	26.9	20.7	14.6
28	22.9	23.1	18.7	13.3
36	15.9	16.1	16.5	12.4
44	11.2	11.5	11.9	11.6
55	6.6	6.9	7.4	7.9
65	3.9	4.1	4.6	5.0
75		2.0	2.5	2.9

Main boom 74 m

Radius	Fixed jib length in (m)			
	11	14	17	
(m)	t	t	t	
7.6	35.1			
9	34.3	31.1		
10	32.8	30.8	27.8	
12	31.2	28.3	26.7	
16	30.1	26.9	24.4	
20	27.8	25.5	23.4	
28	22.4	22.3	21.1	
36	15.5	15.7	15.9	
44	10.9	11.1	11.3	
55	6.4	6.6	6.9	
70	2.5	2.8	3.0	
75			2.0	

TLT 10576485 - M00000

Capacities in metric tonnes with fixed jib (No. 1008.xx), 82.3 counterweight + 36 t carbody counterweight. Above lift chart is for reference only. For actual lift duty and complete chart with all available configurations please refer to lift chart in operator's cab or manual.

Lift chart - fixed jib (No. 1008.xx)

Offset 30°

Main boom 20 m

Radius	Fixed jib length in (m)			
	11	14	20	26
(m)	t	t	t	t
11	34.8			
12	32.7	26.9		
14	29.8	24.7	17.5	
18	25.1	21.6	15.1	12.1
20	23.4	20.1	14.0	11.3
24	21.5	17.6	12.3	9.8
26	20.3	16.7	11.7	9.2
28	19.6	15.9	11.2	8.7
30	19.0	15.2	10.8	8.3
34		14.5	9.8	7.6
40			9.1	6.8
46				6.4

Main boom 29 m

Radius	Fixed jib length in (m)			
	11	14	20	26
(m)	t	t	t	t
10	35.9			
11	35.2	28.9		
15	30.8	25.8	17.8	
18	27.6	24.0	16.0	12.0
24	23.3	20.1	13.4	10.2
28	22.0	18.2	12.2	9.2
32	20.2	16.7	11.2	8.5
36	19.2	15.7	10.6	7.9
38	17.9	15.3	10.2	7.6
40		15.0	9.9	7.4
46			9.5	6.8
50				6.6

Main boom 38 m

Radius	Fixed jib length in (m)			
	11	14	20	26
(m)	t	t	t	t
8.9	35.9			
11	35.7	28.3		
15	32.3	25.9	17.5	
19	28.7	23.5	15.6	12.0
20	27.8	23.4	15.2	11.7
28	23.2	19.1	12.6	9.6
36	19.0	16.6	11.1	8.4
44	13.7	14.0	9.9	7.4
46	12.6	13.0	9.7	7.2
48		12.0	9.5	7.1
55			9.2	6.7
60				6.5

Main boom 47 m

Radius	Fixed jib length in (m)			
	11	14	20	26
(m)	t	t	t	t
9.3	35.9			
12	35.5	28.8		
15	33.6	27.2	17.5	
19	30.1	24.6	16.1	12.0
20	29.5	24.0	15.8	11.7
28	24.8	21.0	13.4	9.9
36	18.5	18.2	11.8	8.7
44	13.2	13.5	10.8	7.8
50	10.4	10.7	10.0	7.3
55		8.8	9.4	6.9
60			7.7	6.7
65				6.6

Main boom 56 m

Radius	Fixed jib length in (m)			
	11	14	20	26
(m)	t	t	t	t
9.6	35.9			
12	35.3	28.0		
16	32.6	25.7	17.2	
19	30.4	24.2	16.1	11.8
28	25.9	20.8	13.6	10.1
36	17.9	18.0	12.1	9.0
44	12.6	13.0	11.0	8.1
55	7.9	8.2	8.9	7.2
60	6.3	6.6	7.2	6.9
65		5.3	5.8	6.4
70			4.6	5.1
75				4.0

Main boom 62 m

Radius	Fixed jib length in (m)			
	11	14	20	26
(m)	t	t	t	t
9.8	34.1			
12	33.1	26.7		
16	30.6	24.8	17.0	
19	28.9	23.8	16.2	11.7
28	25.1	20.6	13.7	10.2
36	17.5	18.0	12.3	9.1
44	12.2	12.6	11.3	8.3
55	7.5	7.8	8.5	7.4
65	4.6	4.9	5.5	6.0
70		3.7	4.3	4.8
75			3.2	3.7
80				2.7

Main boom 68 m

Radius	Fixed jib length in (m)			
	11	14	20	26
(m)	t	t	t	t
10	31.8			
12	31.1	25.6		
16	28.8	24.1	17.0	
20	26.9	22.9	16.0	11.7
28	23.8	20.0	14.0	10.3
36	16.9	17.3	12.6	9.3
44	11.8	12.2	11.5	8.4
55	7.1	7.4	8.1	7.6
65	4.2	4.5	5.1	5.7
70	3.1	3.4	3.9	4.4
75		2.3	2.9	3.4
80				2.4

Main boom 71 m

Radius	Fixed jib length in (m)			
	11	14	20	26
(m)	t	t	t	t
10.1	30.1			
12	29.0	25.3		
16	26.7	24.0	17.3	
20	25.4	22.5	16.4	11.6
28	22.6	19.9	14.3	10.4
36	16.5	16.9	12.9	9.3
44	11.6	12.0	11.7	8.5
55	6.9	7.2	7.9	7.6
65	4.0	4.3	4.9	5.5
70	2.9	3.2	3.7	4.3
75		2.1	2.7	3.2
80				2.2

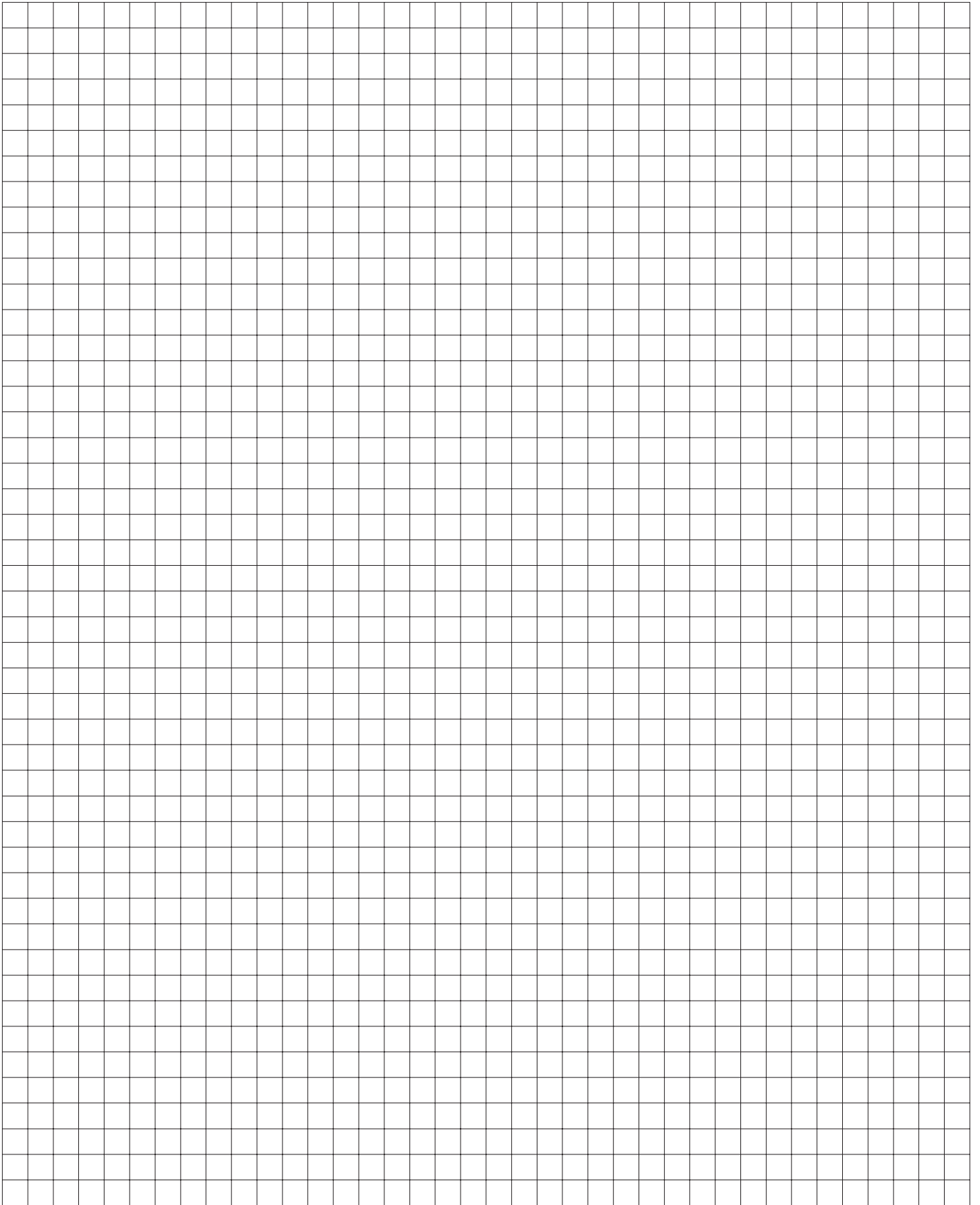
Main boom 74 m

Radius	Fixed jib length in (m)			
	11	14	17	
(m)	t	t	t	
10.2	28.8			
13	26.0	24.1		
14	25.1	23.7	20.4	
16	24.9	22.8	20.6	
20	24.2	21.4	19.1	
28	21.7	19.1	16.8	
36	16.1	16.5	15.1	
44	11.3	11.7	12.0	
55	6.7	7.0	7.4	
65	3.8	4.1	4.4	
70	2.7	2.9	3.3	
75			2.2	

TLT 10576485 - M00000

Capacities in metric tonnes with fixed jib (No. 1008.xx), 82.3 counterweight + 36 t carbody counterweight. Above lift chart is for reference only. For actual lift duty and complete chart with all available configurations please refer to lift chart in operator's cab or manual.

Notice



Liebherr-Werk Nenzing GmbH

Dr. Hans Liebherr Str. 1, 6710 Nenzing/Austria
Tel.: +43 50809 41-473, Fax: +43 50809 41-499
crawler.crane@liebherr.com, www.liebherr.com
facebook.com/LiebherrConstruction