
Reduced to the very best.

Small mixing plant.
Big advantages.

LIEBHERR

Horizontal batching plant LCM 1.0



LCM 1.0

Economical batching plant with unique advantages.

The plant is economical to purchase and operate. The operation of the plant is simple thanks to intuitive control system via laptop.



The LCM 1.0 concrete batching plant combines solid construction, cost-effective transport and assembly with an attractive price/performance ratio. A wide variety of concrete recipes are produced reliably and in high quality.

The plant is equipped with a powerful mixer system and produces up to 69 m³ of fresh concrete per hour. The entire concept is designed for high efficiency and a long service life. Modern technology at an affordable price.

Various mixer options for customerspecific requirements

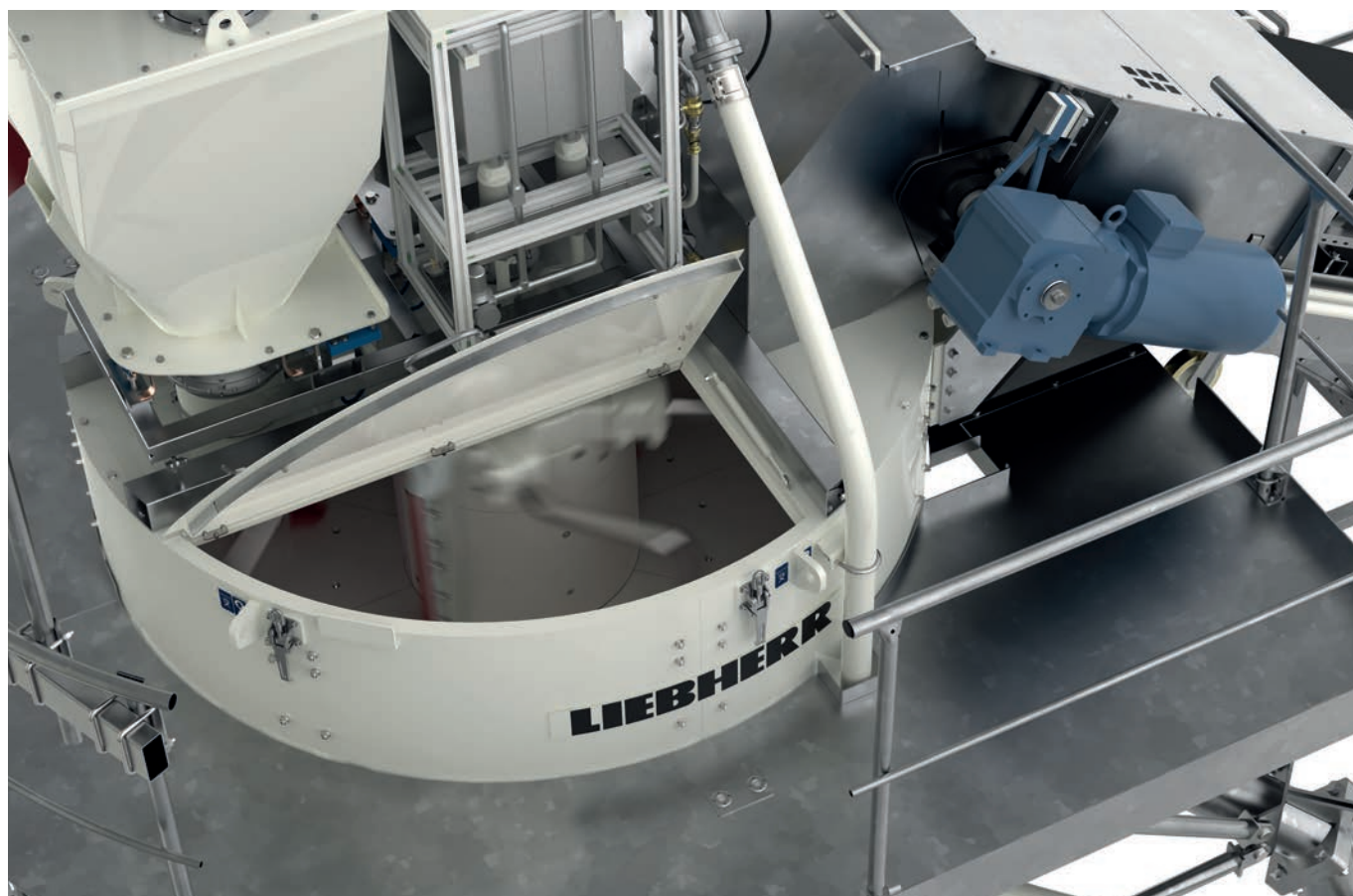
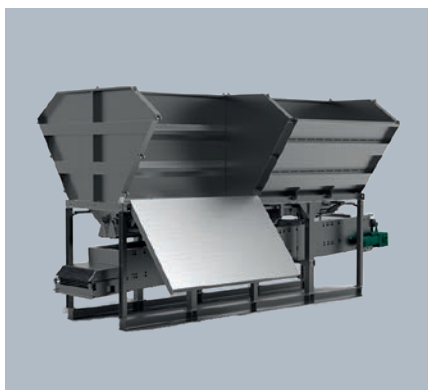
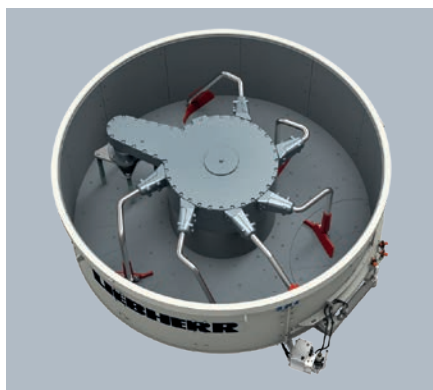
- Liebherr ring-pan mixer for standard to high-performance concrete types
- Optionally with twin-shaft mixer

Efficient aggregate storage in an in-line silo

- Standard in-line silo with $4 \times 10 \text{ m}^3$ filling volume
- Optionally, the transport optimised in-line silo with $4 \times 25 \text{ m}^3$ filling volume is also possible

Modern control system

- Easy and intuitive control system via laptop
- Clear display of the essential operations
- Constant monitoring of the mixing process through fixed scale displays



LCM 1.0

Cost-effective transport and mobile plant concept

The LCM 1.0 concrete batching plant, designed for economical concrete production, enables a simple, fast as well as cost-effective transport in 2 x 40ft. HC containers. Thus, the concrete batching plant ensures a high degree of mobility and offers the possibility of an uncomplicated and rapid relocation of the plant.







QR Code to
the Video



Horizontal batching plant LCM 1.0
Economical transport and
uncomplicated assembly

Installation concept

- 1 Cost-efficient transport**
in 2 x 40ft. HC containers thanks to the well planned and space-saving concept of the concrete batching plant.



- 2 Easy preparation**
Safe and easy pre-assembly of the supports on the ground.



- 3 Time-saving assembly**
Plant can be lifted in a single operation with the aid of a crane.

- 4 Mobile concept**
In order to be able to realise the quickest and simplest possible assembly, foldable components and pre-mounted steel foundations are used.

- 5 Quick and easy assembly**
leads to minimal foundation work.





Screen masks

Monitoring and control of all important elements of the plant at a glance

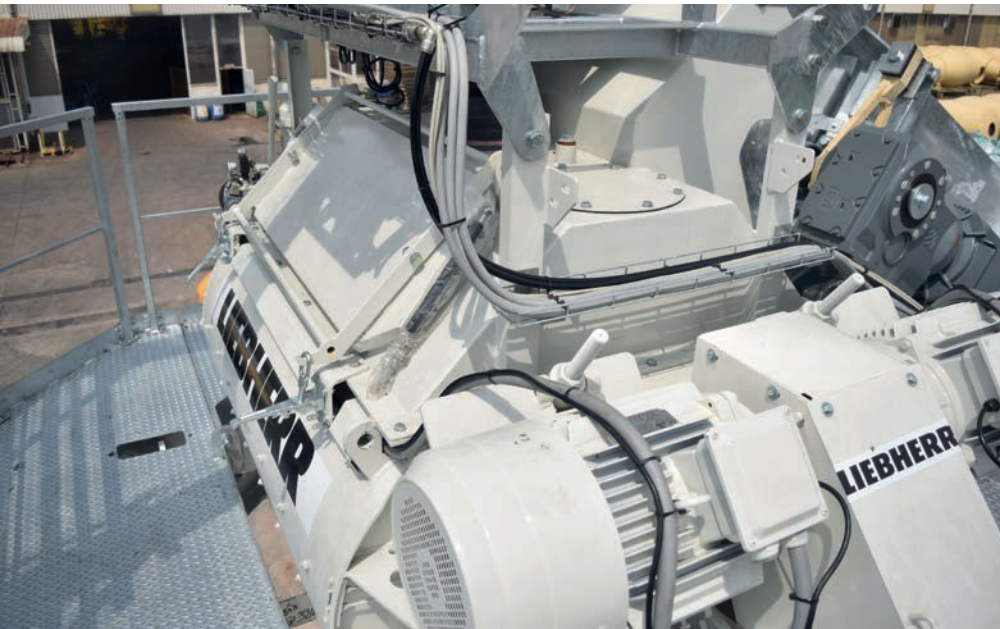
LCM 1.0 Litronic-BCS control system

The Litronic-BCS is a fully automatic, real-time control system. This low-cost variant is preferably used for smaller concrete batching plants.

The Litronic-BCS is a fully automatic, real-time capable control system with extensive features. All standard tasks as well as data management can be carried out conveniently. The simple operation of the control system via two monitors allows the operator parallel master data management and

visualisation of the process flow. The visualisation components can be freely adapted. In addition, the system has automatic safety monitoring. Manual intervention during the automatic runtime is possible at any time.

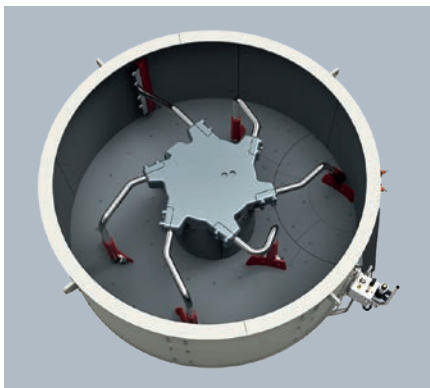
Maximum flexibility – the right mixer for every application



Competence in mixing technology

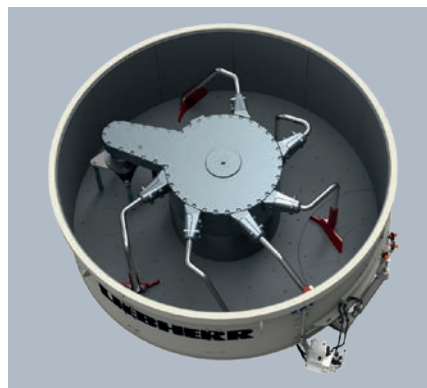
Liebherr has been developing and producing its own mixer systems for over 60 years. In the company's own mixing technology laboratory, the mixer systems are constantly being further developed and optimised during tests with a wide range of materials. The main focus of development is the realisation of a long mixer service life, a high output rate with consistently high quality as well as a maintenance-friendly arrangement of all service elements.

The LCM 1.0 can be equipped with either a twin-shaft mixer or a ring-pan mixer from Liebherr.



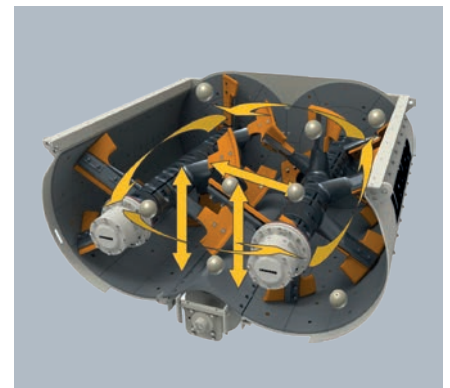
Ring-pan mixer type R 1.0

- Designed for all standard recipes
- The arrangement of the mixing tools is optimised to mix the raw materials quickly and efficiently to obtain the desired mixing result



Ring-pan mixer with agitator system type RIM-M 1.0

- The agitator system ensure intensive mixing performance and also master demanding recipes
- The agitator breaks up the cement faster and homogenises the mixture in a shorter time



Twin-shaft mixer type DW 1.0

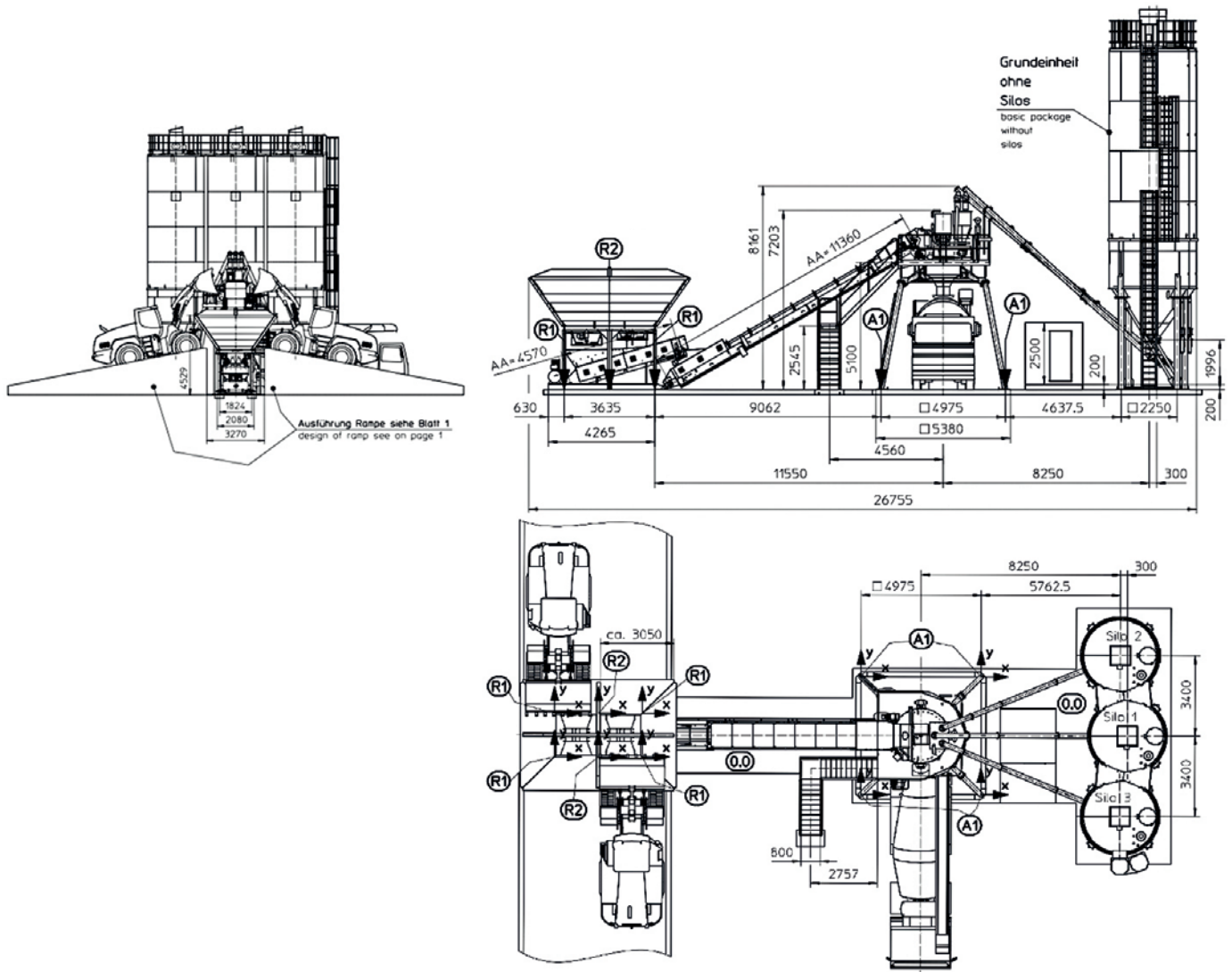
- The three-dimensional movement of the mix ensures fast results
- The twin-shaft mixer is an economical all-rounder

Technical Data

A reliable all-rounder

The robust and fully galvanized design guarantees the operator a long service life.





Technical Data



Theoretical discharge output in compacted mixed concrete*	69 m ³ /h compacted
Theoretical discharge output in compacted mixed concrete**	58 m ³ /h compacted
Mixer type: Ring-pan or twin-shaft mixer	R 1.0/RIM-M 1.0/DW 1.0
Max. number of aggregate chambers in-line silo	4
Max. aggregate storage capacity in-line silo	100 m ³
Max. aggregate storage capacity in-line silo per chamber	25 m ³
Max. number of aggregate chambers pocket silo	4
Max. aggregate storage capacity pocket silo	40 m ³
Max. number of cement types	3
Feeding	Belt
Max. filling amount of each cement silo	100 t

* by 20 sec. mixing time

** by 30 sec. mixing time

We are here for you!

Personal. Capable. Reliable.



Concrete pumps



Mixing plants



Truck mixers



Conveyor belts



Measuring technology



Mixing systems



Concrete recycling systems

Your powerful partner.

- Delivery and instruction by experienced service technicians
- Worldwide service network with over 90 service centres
- Technical support worldwide
- Fast availability of spare parts
- Professional maintenance and services

Get your
contact



Liebherr-Mischtechnik GmbH • Postfach 145 • 88427 Bad Schussenried, Germany
+49 7583 949-0 • www.liebherr.com • E-Mail: info.lmt@liebherr.com

Subject to change
Printed in Germany by Lacher LMT_8203 115 05-0724_en