

Liebherr Customer Service

# Upgrade: Earth Spike Less Risk of Lightning Damage

EN

Upgrade for:

Crawler Cranes (max. 300 t capacity)  
Duty Cycle Crawler Cranes  
Deep Foundation Machines



Health & Safety



Eco & Comfort



Cost-Saving & Performance



Upgrade & Improvement



# LIEBHERR

# Earth Spike to Minimize Risk of Lightning Damage

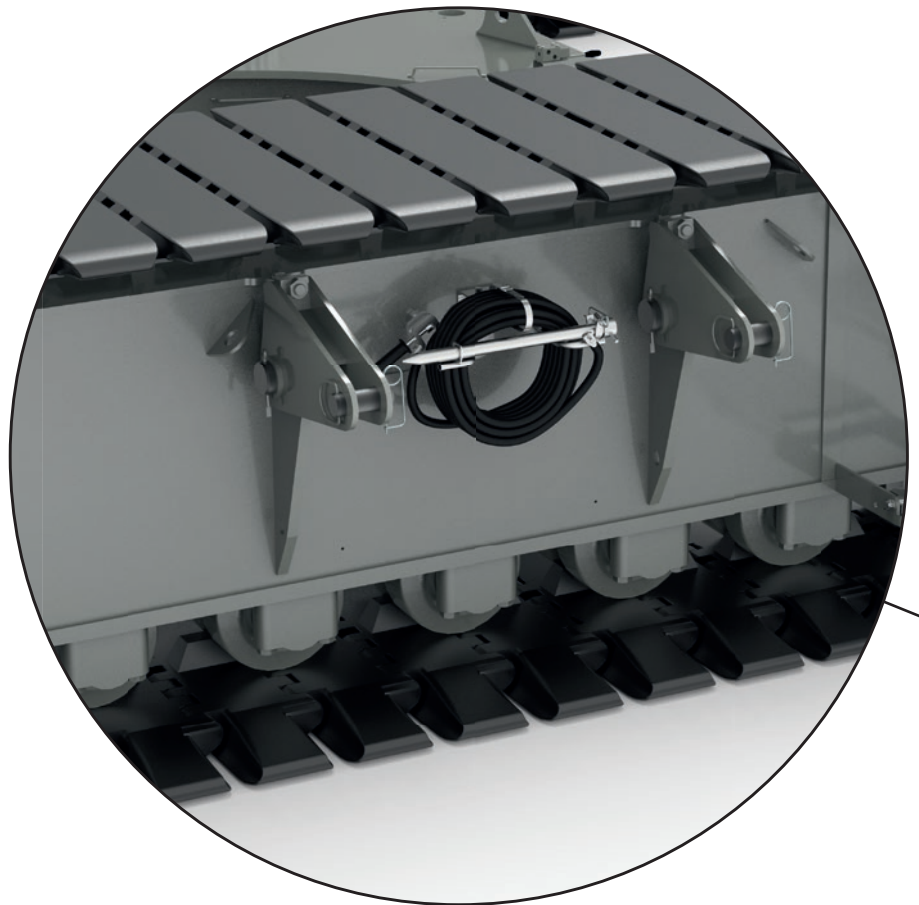
The safety of operator and machine is of utmost importance. Liebherr has developed an earth spike for construction machines that reduces the risk of injury and damage caused by lightning. With the spike placed in the ground the machine is properly earthed. This feature is especially beneficial when crane mats are used under the crawlers.

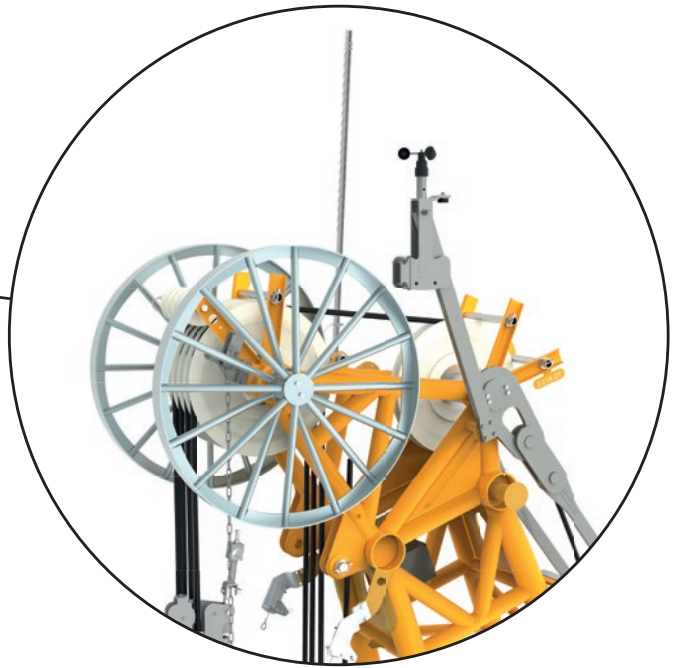
## Your benefits:

- higher protection for the operator
- reduced risk of damage by lightning to the machine leads to shorter downtimes
- less danger for construction site employees through controlled conduction of lightning
- low investment costs for increased safety

## Earth spike for crawler cranes and deep foundation equipment

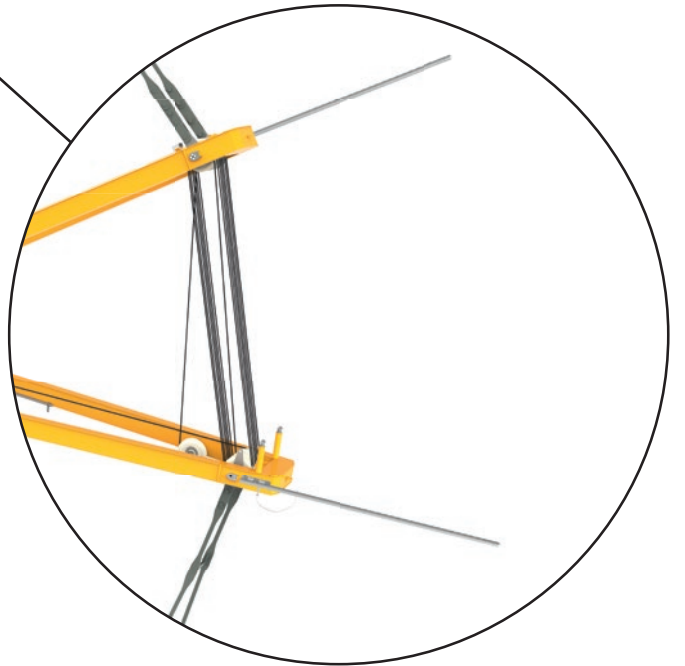
The earth spike is attached to a 15 m heavy duty cable which is mounted at a defined position on the undercarriage. It has no implications for transport and is always ready for operation.



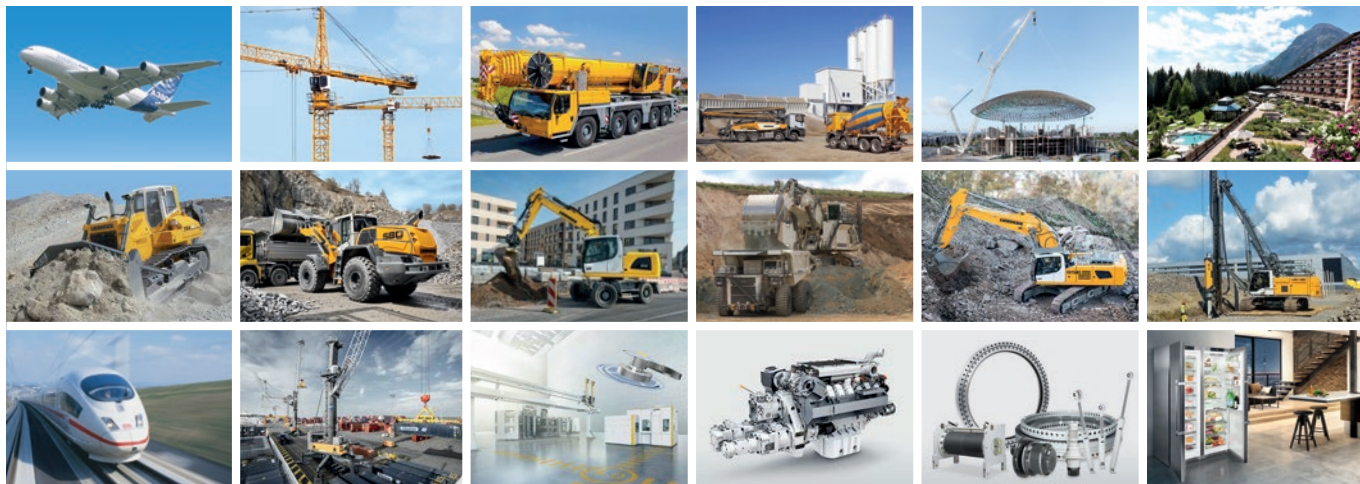


### Lightning rods for LR crawler cranes

For LR cranes, the earth spike must always be used in combination with lightning rods. These are placed on the top of the boom head or A-frame, and can be easily folded down for transportation. The number of rods and their position depends on the configuration of the machine. Electrical currents are conducted directly through the machine into the ground via the earth spike.



# The Liebherr Group of Companies



## Wide Product Range

The Liebherr Group is one of the largest construction equipment manufacturers in the world. Liebherr's high-value products and services enjoy a high reputation in many other fields. The wide range includes domestic appliances, aerospace and transportation systems, machine tools and maritime cranes.

## Exceptional Customer Benefit

Every product line provides a complete range of models in many different versions. With both their technical excellence and acknowledged quality, Liebherr products offer a maximum of customer benefits in practical applications.

## State-of-the-art Technology

To provide consistent, top quality products, Liebherr attaches great importance to each product area, its components and core technologies. Important modules and components are developed and manufactured in-house, for instance the entire drive and control technology for construction equipment.

## Worldwide and Independent

Hans Liebherr founded the Liebherr family company in 1949. Since then, the family business has steadily grown to a group of more than 130 companies with nearly 44,000 employees located on all continents. The corporate headquarters of the Group is Liebherr-International AG in Bulle, Switzerland. The Liebherr family is the sole owner of the company.

[www.liebherr.com](http://www.liebherr.com)

Find your nearest service partner:



**Liebherr-Werk Nenzing GmbH**

Dr. Hans Liebherr Str. 1, 6710 Nenzing/Austria

Tel.: +43 50809 41-464

[lwn.constructionmachinery.cs@liebherr.com](mailto:lwn.constructionmachinery.cs@liebherr.com)

[facebook.com/LiebherrConstruction](https://facebook.com/LiebherrConstruction), [www.liebherr.com](http://www.liebherr.com)