

EN-US

LR 1400 SX

LR 1007.01.08
www.liebherr.com

LIEBHERR

Crawler cranes

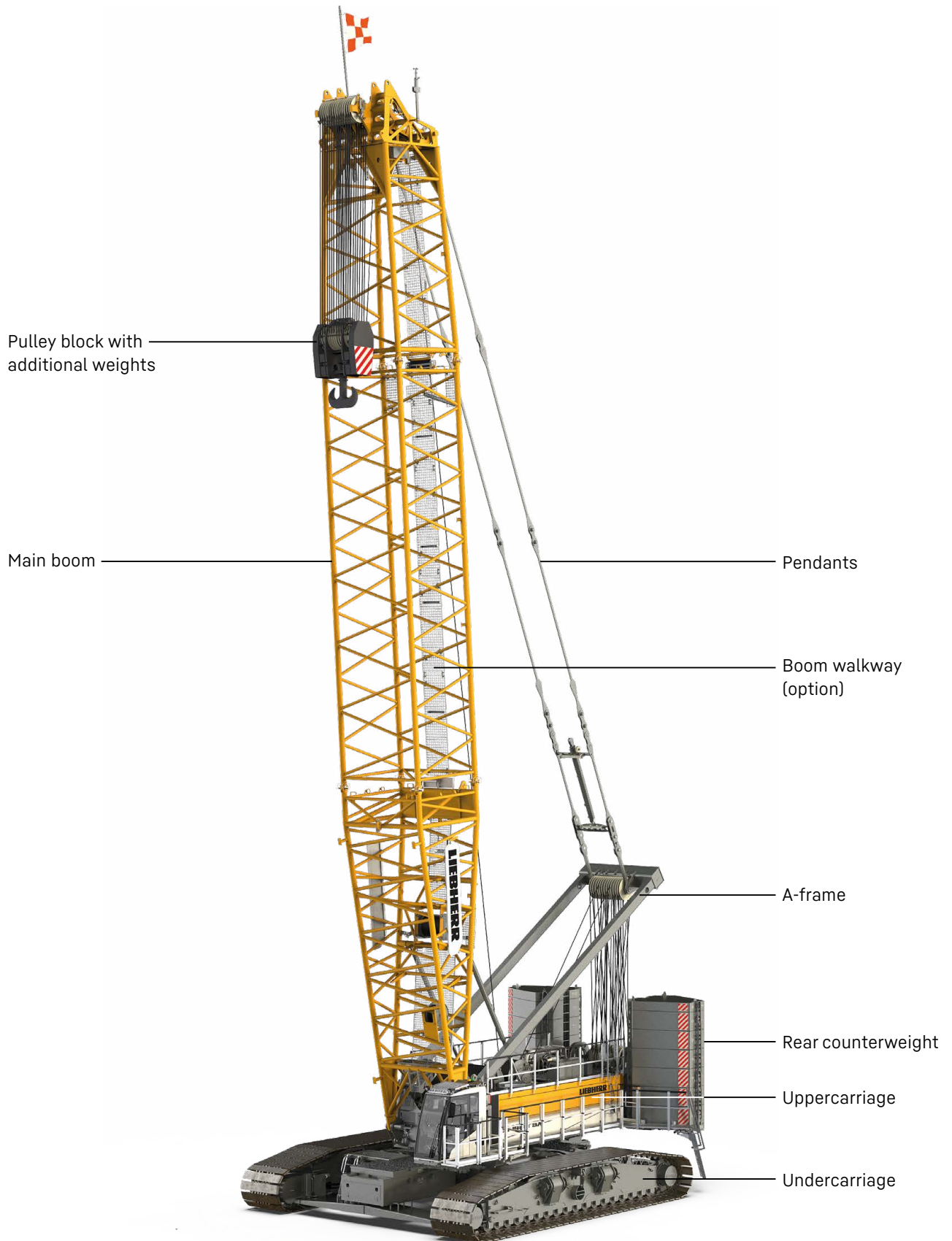


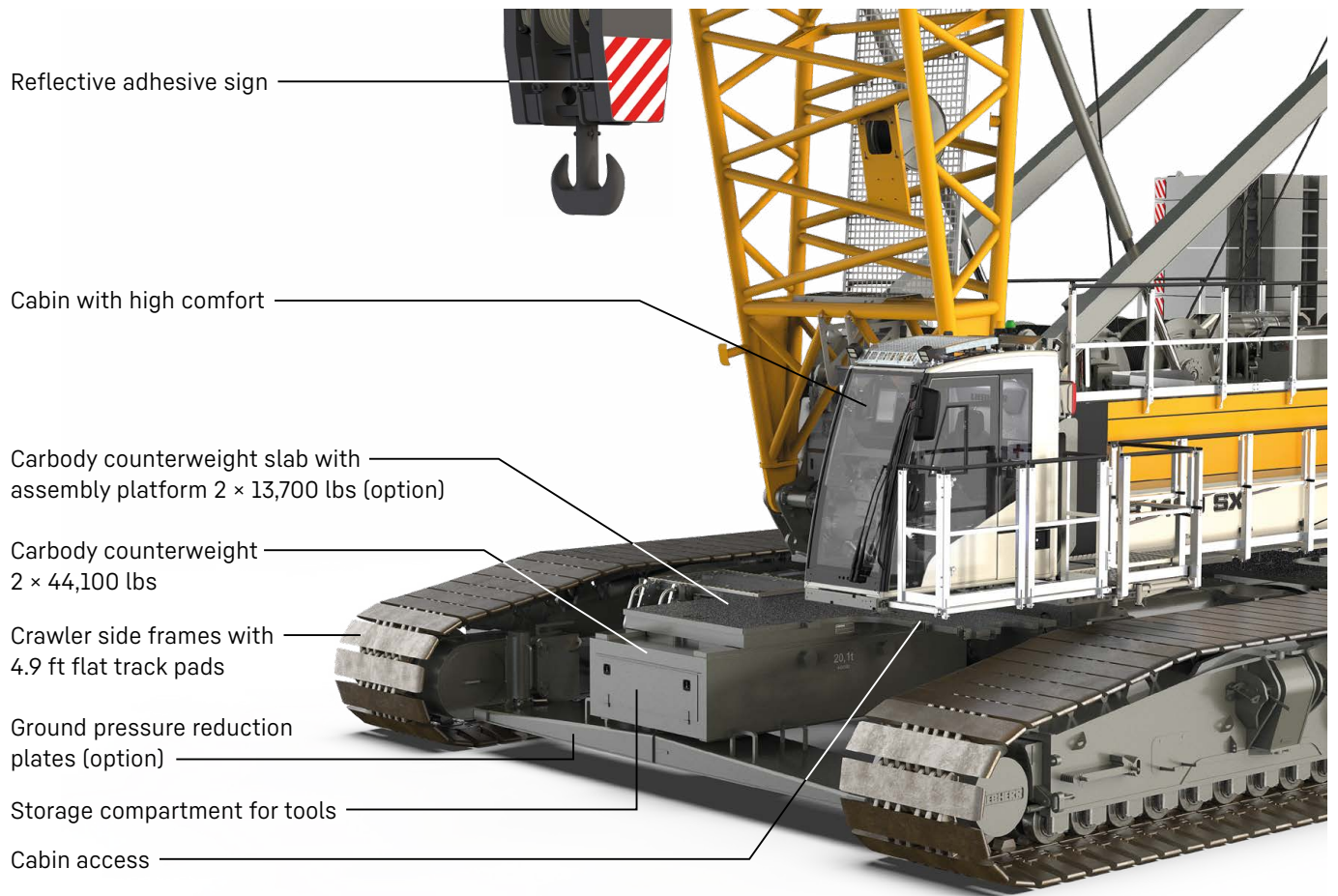
Concept and characteristics	3
Technical description	8
Dimensions	10
Transport dimensions and weights	11
Self-assembly system	18
Boom combinations	20
Main boom 2825.xx	22
Luffing jib 2421.xx	24
Luffing jib 2316.xx	30
Fixed jib 1507.20	36
Fixed jib 1916.xx	38
Fixed jib 1713.xx	40
Notes	42

Remarks

- The load capacities stated are valid for lifting operation only (corresponding with crane classification according to ISO 4301-1, crane group A1).
- Machine is standing on firm, horizontal ground.
- The weight of the lifting device (pulley block, hoist ropes, shackles etc.) must be deducted from the load capacity.
- Additional equipment on boom (e.g. walkways) must be deducted from the load capacity.
- The max. admissible wind speed can be preselected in the LML software and referred to in the load chart.
- Working radii are measured from centre of swing and under load.
- The lifting capacities are valid for 360 degrees of swing.
- Calculation of stability under load was carried out according to ISO 4305 Table 1 + 2 + 3, tipping angle 4°, as well as ANSI/ASME B 30.5 and was tested according to SAE J765 and SAE J987.
- The structures are calculated according to EN 13001-1; EN 13001-2.
- Weights may vary depending on the delivered configuration of the machine filling level of the tanks as well as generally valid tolerances.
- The figures in this brochure may include options which are not within the standard scope of supply of the machine.
- Subject to technical change without notice.

Concept and characteristics





High performance

A strong, efficient and reliable diesel engine of the newest generation provides high performance and enables several movements to be carried out simultaneously.

Cabin with high comfort

Optimised field of vision combined with enhanced comfort: an orthopaedic operator's seat with heating and cooling functions, as well as precise and ergonomic controls are included. Air conditioning is optional.

Ground pressure

The actual ground pressure is calculated according to the configuration and position of the machine and displayed in the operator's cabin. Using the optional Liebherr Crane Planner 2.0 the actual ground pressure can already be calculated and displayed in the planning stage.

Control system

Easy and intuitive handling of control, service and machine functions through a large, clear colour monitor. Built for extreme environmental conditions.

Travelling with load

By preselecting one of the three travel speeds, the control automatically applies the permitted load curve.

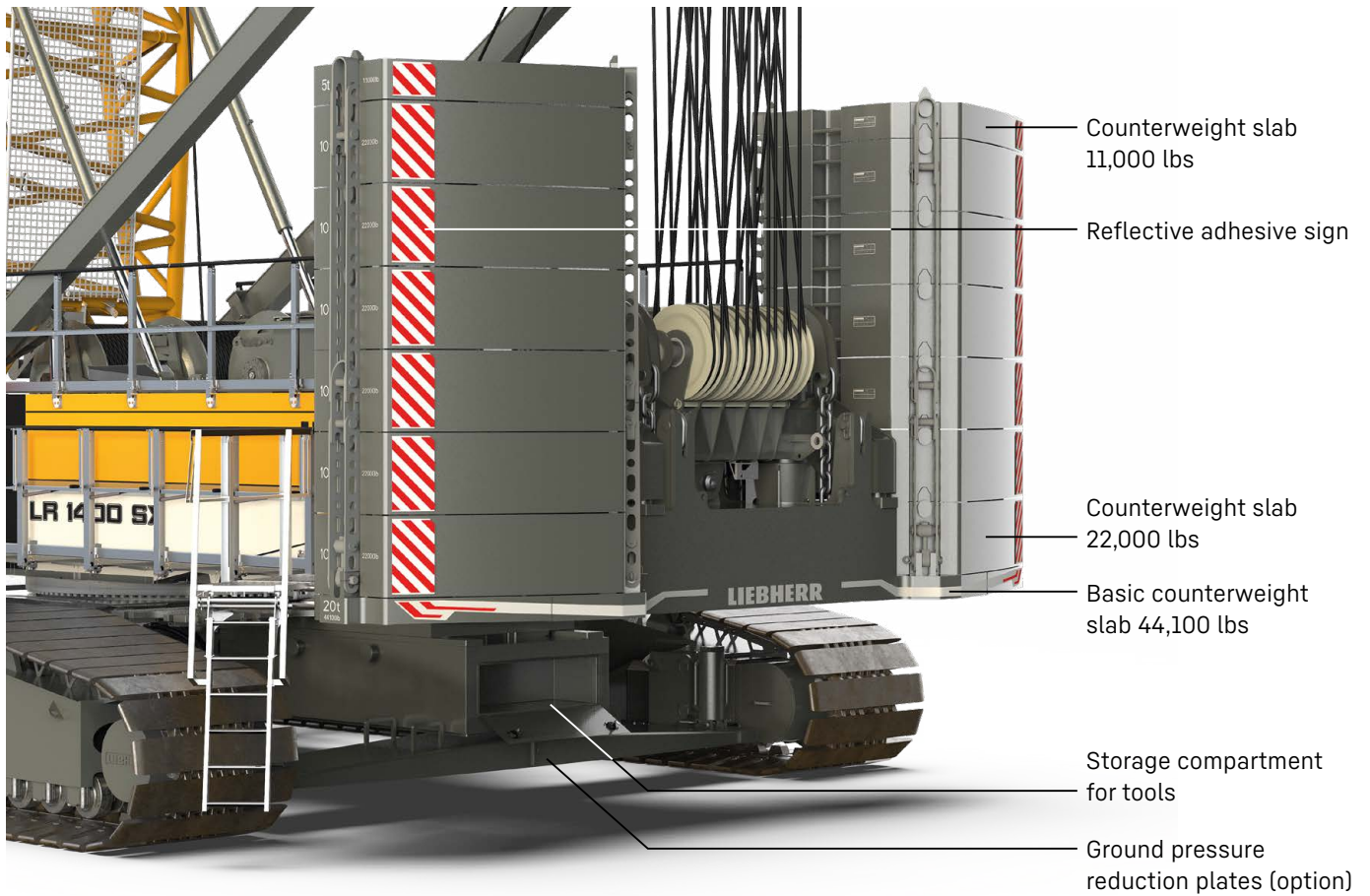
Stage 1: up to 3.94 inch/s

Stage 2: up to 15.75 inch/s

Stage 3: more than 15.75 inch/s

Barge operation

By preselecting the barge inclination the control automatically applies the permitted load curve.



Efficient self-assembly system and short assembly times

The optional self-assembly system enables safe, independent and quick assembly/disassembly of the crawler side frames, the carbody and rear counterweights, the two hoist winches, as well as boom elements.

Easy service

The design ensures easy maintenance and service as well as safe access to the components.

Mobility

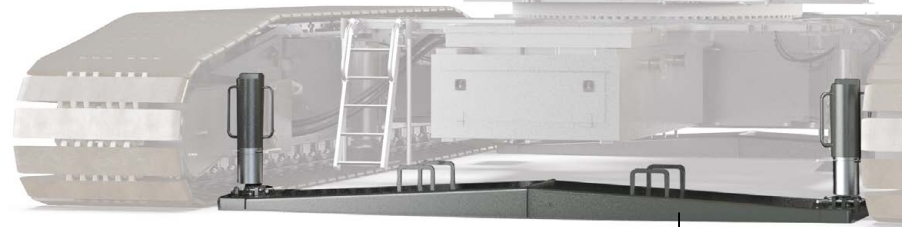
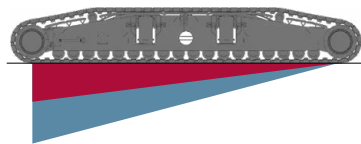
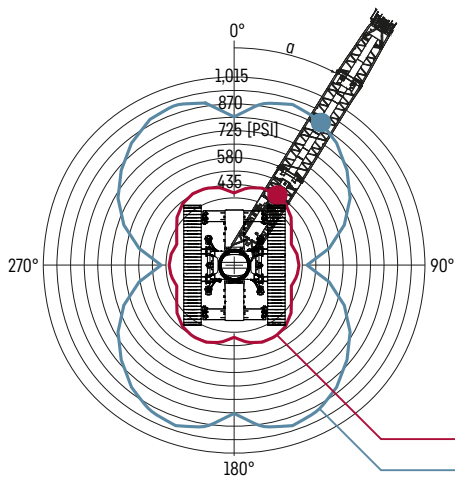
Crane parts are optimized for transportation. The maximum transport width is 9.8 ft.

Boom/jib

A variety of boom systems and configurations allow for optimum operation on the most diverse jobsites.

Reduction of ground pressure (option)

With the help of the new hydraulically activated ground pressure reduction plates, the ground pressure can be reduced by up to 56 %.

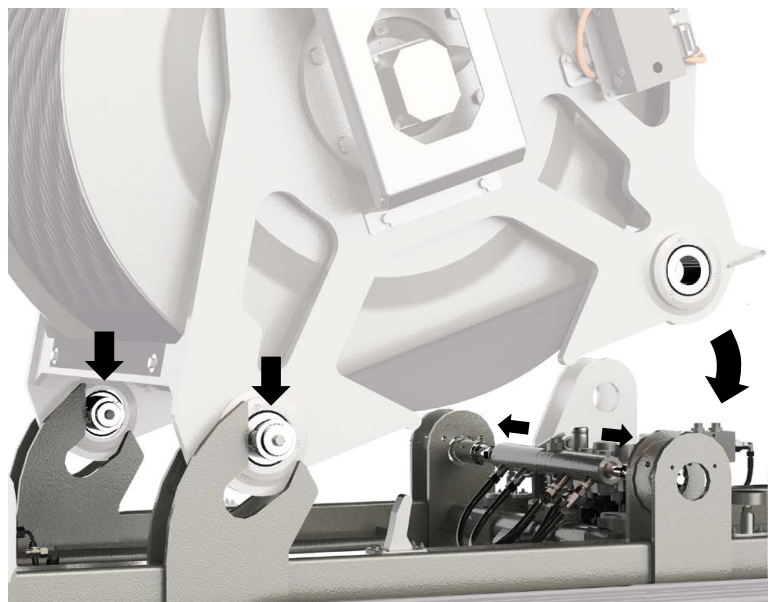
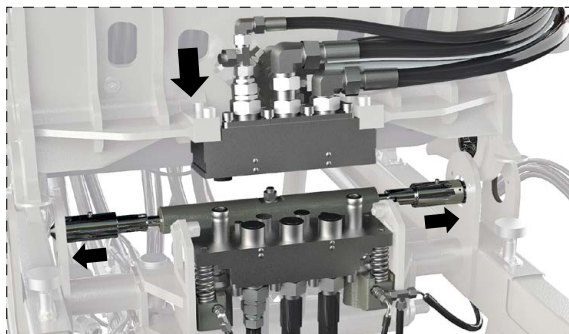


with ground pressure reduction plates
without ground pressure reduction plates

Ground pressure reduction plates

Quick assembly of hoisting winches

Winch installation and removal can be carried out within seconds thanks to the integrated self-adjustment in the winch frame, as well as the hands-free quick connect, which has been used for many years in the toughest of applications.



The winch guides and locks itself during installation.

Cabin access

Safe and non-slip direct access to the cabin is via convenient foldable steps and continues on illuminated platforms. For the first time, access is no longer via the track pads, thus we fulfil the highest possible safety standard.

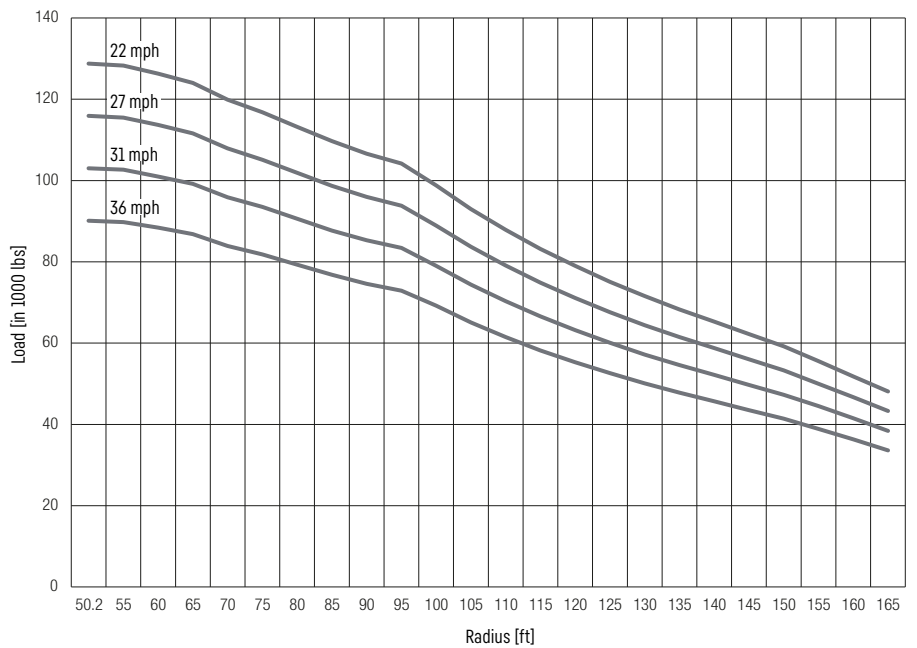


Convenient foldable steps

Preselection of customised load curves

Different wind speeds. The driver can preselect appropriate and permitted load curves for different wind speeds by pressing a button directly on the monitor.

In the same way different barge inclinations or travel speeds, or even "grab operation" and further operation modes can be selected. In all cases the control system automatically assigns an appropriate permitted load curve.



The above diagram shows an example of the selectable load curves for different wind speeds.

Technical description



Diesel engine

Power rating according to ISO 9249	450 kW (603 hp) at 1700 rpm
Engine type	Liebherr D 966 A7-05
Fuel tank capacity	213 gal with continuous level indicator and reserve warning
Exhaust certification	Version 1: 97/68 EC Stage V and EPA/CARB Tier 4f Version 2: EPA/CARB Tier 4f Version 3: without certified emission standard



Noise measurement data and vibration

Noise emission	according to 2000/14/EC directive	
Emission sound pressure level L_{PA}	69 dB(A)	(in the cabin)
Guaranteed sound power level L_{WA}	107 dB(A)	(of the machine)
Vibration transmitted to the machine operator	< 8.20 ft/s ² (to the hand-arm system) < 1.64 ft/s ² (to the whole body)	



Hydraulic system

Hydraulic pumps	double axial displacement pump in closed loop hydraulic system allows all functions to be operated simultaneously automatic working pressure cut-off to minimize peak pressure
Hydraulic oil tank capacity	180 gal
Max. working pressure	5,076 PSI
Hydraulic oil	electronic monitoring of all filters use of synthetic environmentally friendly oil



Control

Control system	includes all control and monitoring functions, designed to withstand extreme environmental conditions and heavy construction tasks
Display	colour touchscreen in the operator's cabin, clear display of complete machine operating data, warnings and failure indications in the required language
Operation	several movements can be performed simultaneously thanks to electro-hydraulic proportional control, all categories of loads can be positioned with utmost precision



Crawlers

Drive system	with variable displacement axial piston motors, four drives
Crawler side frames	manual chain tensioning
Brake	hydraulically released, spring-loaded multi-disc holding brake
Drive speed	0-0.808 mph
Flat track pads	Width 4.9 ft, 3.9 ft (option)



Swing gear

Drive system	with fixed axial piston hydraulic motors, planetary gearbox, pinion
Swing ring	roller bearing with internal teeth
Brake	hydraulically released, spring-loaded multi-disc holding brake
Swing speed	0-1.8 rpm continuously variable
Speed control	both swing modes are possible - speed control or free swing for speed control: a multi-disc holding brake locks automatically at zero swing motion.



Hoisting gear

Winches 1/2 as crane winches	Internal low-maintenance planetary gearbox in oil bath, load support by the hydraulic system, spring-loaded, multi-disc holding brake, pressure controlled, variable flow hydraulic motors for the main winches, full utilisation of engine power as the winch speed is automatically adjusted to suit the respective line pull
Line pull in the 9th layer	35,610 lbf
Rope diameter	28 mm
Drum diameter	2.3 ft
Rope speed	0-429 ft/min
Rope capacity in 9 layers	2,789 ft
Option - winches 1/2 as free-fall winches	free fall: clutch and braking functions are provided by the service brake (low wear and maintenance-free multi-disc brake in compact design)






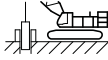


Boom/jib luffing winches

Main boom	Double winch
Line pull	max. 2 × 50,132 lbf
Rope diameter	28 mm
Boom luffing	15-86° in 186 s
Jib	
Line pull	max. 31,024 lbf
Rope diameter	20 mm
Boom luffing	15-78° in 108 s (2421.xx)

Operating weight

Composition of operating weight	Basic machine with crawler side frames (4.9 ft) Cabin Winches 1 + 2 (incl. ropes 2,182 ft + 1,772 ft) A-frame 1 66 ft main boom, consisting of boom foot (33 ft), boom head (23 ft) and boom section (10 ft) 332,700 lbs rear counterweight 116,000 lbs carbody counterweight 661,300 lbs pulley block
Total weight	approx. 779,775 lbs

Operation modes

	 Lifting mode	 Grab mode	 Personnel lifting mode	 Foundation work
 Land	✓	✓	✓	✓
 Floating structure (barge operation)	✓	✓	✓ *	✓

* only valid for jack-up barges

Optional equipment

Basic machine

Additional hydraulics for free fall operation
 Carbody counterweight slab with assembly platform (2x)
 Load hooks/pulley blocks 35,200 / 110,200 / 220,400 / 352,700 / 485,000 / 661,300 / 948,000 lbs
 Painting in customer design
 Rotation-free hoist rope, 28 mm, 486 lbf/mm²; 787 / 1,312 / 1,772 / 2,182 ft / 2,756 ft with crane winch
 Track pads 3.9 ft wide
 Track shifting hydraulic
 Winches 1/2 as free-fall winches, incl. hands-free quick connect

Economy and ecology

Aux. power unit (APU, 2.8 kW)
 Eco-Silent Package

Boom/jib

Luffing jib: luffing winch

Boom/jib other

Additional fall protection harness for 1 person
 Rope guide (2825.xx) ≥ 66 ft
 Walkways for main boom sections 10 / 20 / 40 ft
 Walkways for main boom sections 10 / 20 / 40 ft, incl. fall protection

Application packages

Assembly radio remote control
 Cabin elevator 20 ft hydraulic
 External supply incl. battery charger (100-240 V AC / 750 W)
 Leader application
 Main winch constant tension for one winch
 Operation mode: foundation work
 Operation mode: Personnel lifting mode
 Radio remote control
 Radio remote control (preparation)
 Rope reeving function via radio remote control
 Tagline winch 4,409 lbf free fall
 Two hook operation
 Use of luffing jib winch as auxiliary winch
 Vibration damper for vibrator 26,977 / 35,969 / 56,202 / 112,404 / 179,847 lbf
 Winch synchronization

Special features

Crane Planner 2.0
 LiDAT

Self-assembly system

Jack-up system telescopic
 Reeving winch
 Self-assembly cylinder
 Self-assembly system counterweight

Service package

Central lubrication swing ring bearings / outside
 Cold package -25 °C / -40 °C
 Gear oil level warning
 Hydraulic oil bypass filter
 Liebherr hydraulic oil plus 37 (longlife & bio)
 Liebherr hydraulic oil plus arctic (longlife & bio)
 Liebherr hydraulic oil plus arctic (longlife)
 Refuelling pump AdBlue

Safety features

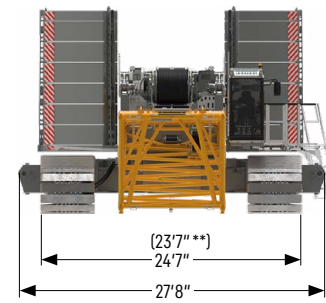
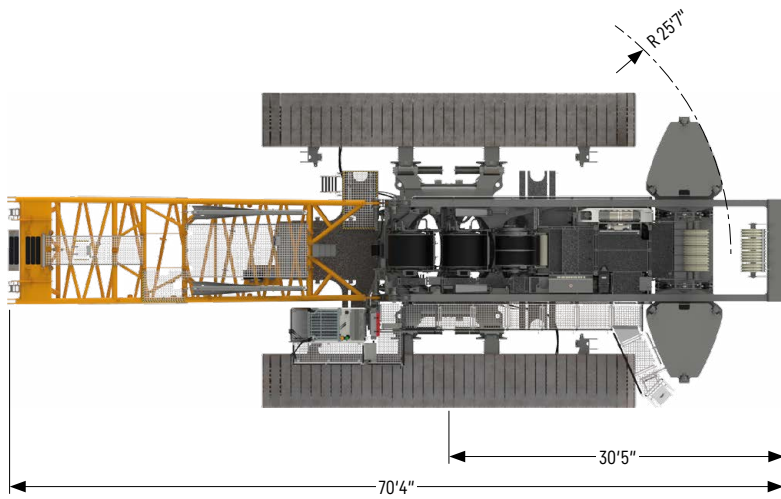
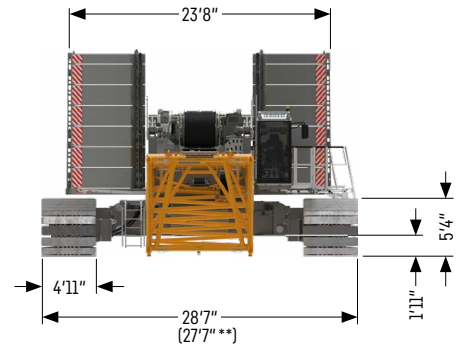
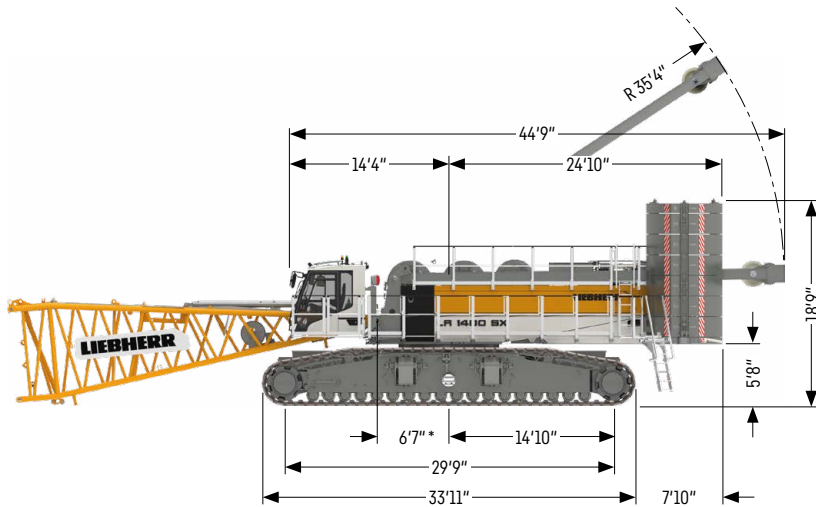
Access control
 Additional access ladder for boom assembly
 Air intake shut-off valve
 Aircraft warning light
 Assistance system: Boom Up-and-Down Assistant
 Assistance system: Gradient Travel Aid
 Assistance system: Ground Pressure Indication and Visualization
 Assistance system: Horizontal Load Path
 Assistance system: Vertical Line Finder
 Cabin protection roof, FOPS 2, foldable
 Earth spike
 Lifting height indication for both hoist winches
 Lightning rod
 Mechanical angle display
 Plug&Play diesel-hydraulic back-up unit 18.4 kW
 Rear and side view cameras
 Swing and boom radius limit device
 Swing warning light
 Vandalism cabin protection
 Winch camera
 Zoom camera at boom head

Operator's comfort

Additional access ladder
 Additional ignition key
 Additional floodlights
 Adjustable, additional LED lights, boom foot
 Cabin air conditioner
 Cabin tilting device hydraulic
 Cabin window protection film
 Jump-start socket (NATO type)

Dimensions

Basic machine with undercarriage

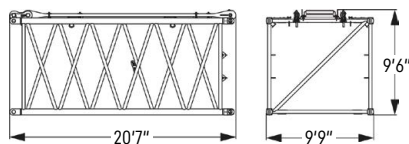
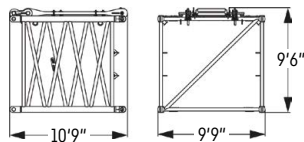
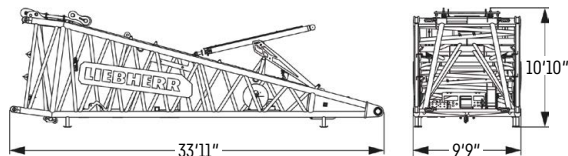
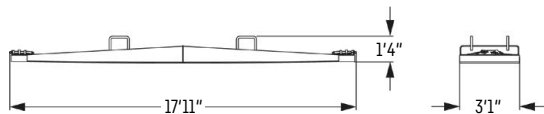
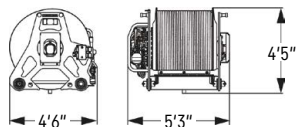
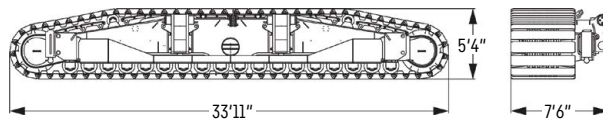
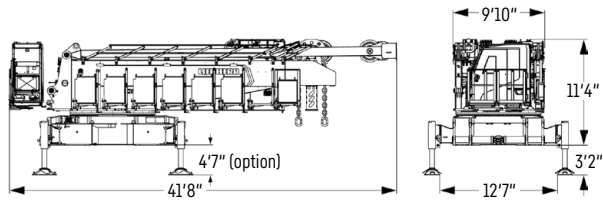


Track shifting hydraulic (option)

- * Boom pivot point
- ** Option: track pads, width 3.9 ft

Transport dimensions and weights

Basic machine und main boom 2825.xx



Basic machine

Weight	lbs 101,413
with A-frame 1, without winches 1 + 2, without boom foot, without rear counterweight, without carbody counterweight and crawler side frames, without self-assembly cylinder for counterweight	

Crawler side frame

Weight flat track pads 4.9 ft	lbs 76,811
Weight flat track pads 3.9 ft (option)	lbs 68,147

Winch 1/2

Weight winch 1 and/or 2 as crane winch*	lbs 6,034
Weight winch 1 and/or 2 as free-fall winch*	lbs 7,121
Weight of hoist ropes	lbs/ft 2.82

* each in the heaviest version, without rope

Ground pressure reduction plate

Weight	lbs 3,331
--------	-----------

Boom foot 33 ft (No. 2825.32)

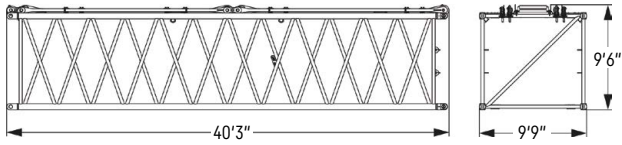
Weight including winch	lbs 17,445
Weight without winch	lbs 15,243

Boom section 10 ft (No. 2825.32)

Weight including boom pendants	lbs 4,268
Weight including boom and jib pendants	lbs 4,594

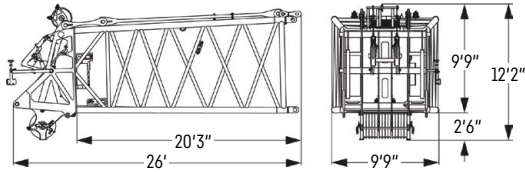
Boom section 20 ft (No. 2825.32)

Weight including boom pendants	lbs 6,422
Weight including boom and jib pendants	lbs 6,947



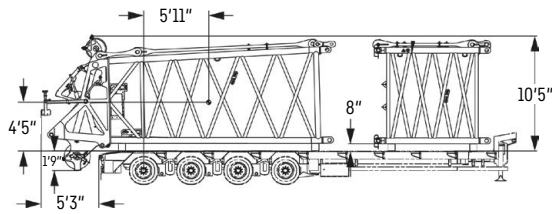
Boom section 40 ft (No. 2825.32)

Weight including boom pendants	lbs 11,528
Weight including boom and jib pendants	lbs 12,575



Boom head 23 ft (No. 2825.32)

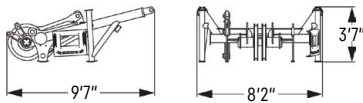
Weight including boom pendants	lbs 15,476
--------------------------------	------------



Transport option -

boom head 23 ft (No. 2825.32) + boom section 10 ft (No. 2825.32)

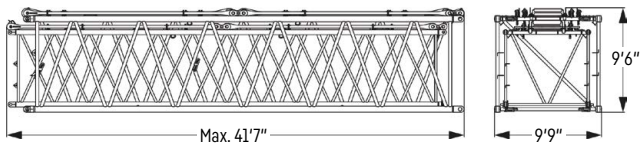
Boom head 23 ft	
Weight including boom pendants	lbs 15,476
Boom section 10 ft	
Weight including boom pendants	lbs 4,268
Weight including boom and jib pendants	lbs 4,594



Auxiliary jib

Weight	lbs 2,800
--------	-----------

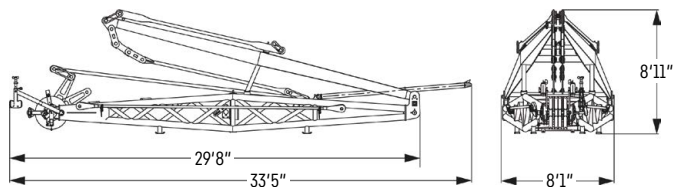
Transport option 2825.xx / 2421.xx



Transport option (No. 2825.xx / 2421.xx)

No. 2825.xx / 2421.xx	ft 10 / 10	20 / 20	40 / 40
Weight including pendants	lbs 6,270	9,425	17,970

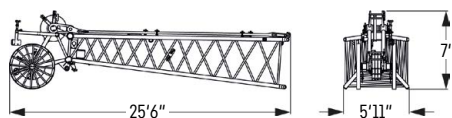
Fixed jib 1507.20



Fixed jib 26 ft (No. 1507.20)

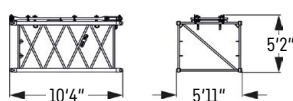
Weight including pendants	lbs 7,397
---------------------------	-----------

Fixed jib 1713.xx



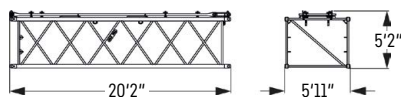
Jib head 23 ft (No. 1713.21)

Weight including pendants	lbs 3,031
---------------------------	-----------



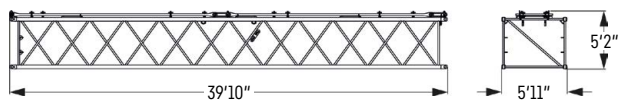
Jib section 10 ft (No. 1713.18)

Weight including pendants	lbs 926
---------------------------	---------



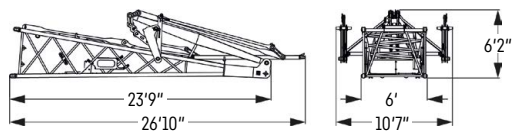
Jib section 20 ft (No. 1713.18)

Weight including pendants	lbs 1,389
---------------------------	-----------



Jib section 40 ft (No. 1713.18)

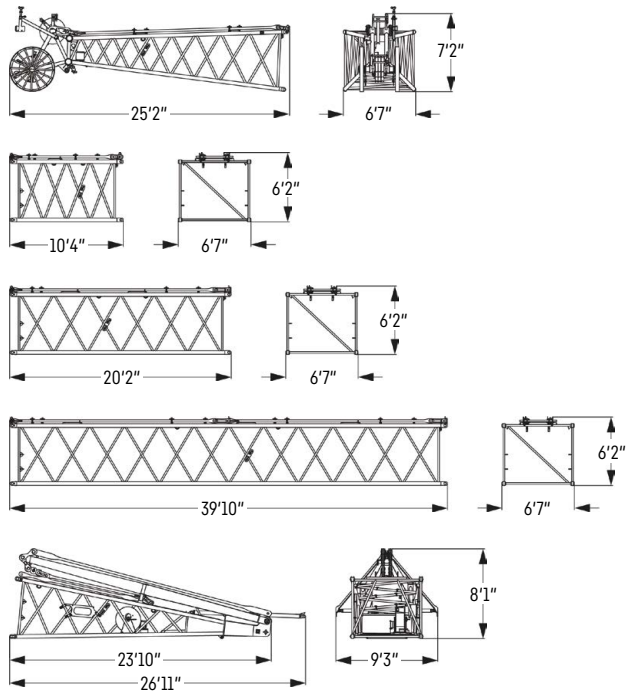
Weight including pendants	lbs 2,513
---------------------------	-----------



Jib foot 23 ft with A-frame (No. 1713.22)

Weight including pendants	lbs 5,904
---------------------------	-----------

Fixed jib 1916.xx



Jib head 23 ft (No. 1916.21)

Weight including pendants	lbs 3,551
---------------------------	-----------

Jib section 10 ft (No. 1916.18)

Weight including pendants	lbs 999
---------------------------	---------

Jib section 20 ft (No. 1916.18)

Weight including pendants	lbs 1,521
---------------------------	-----------

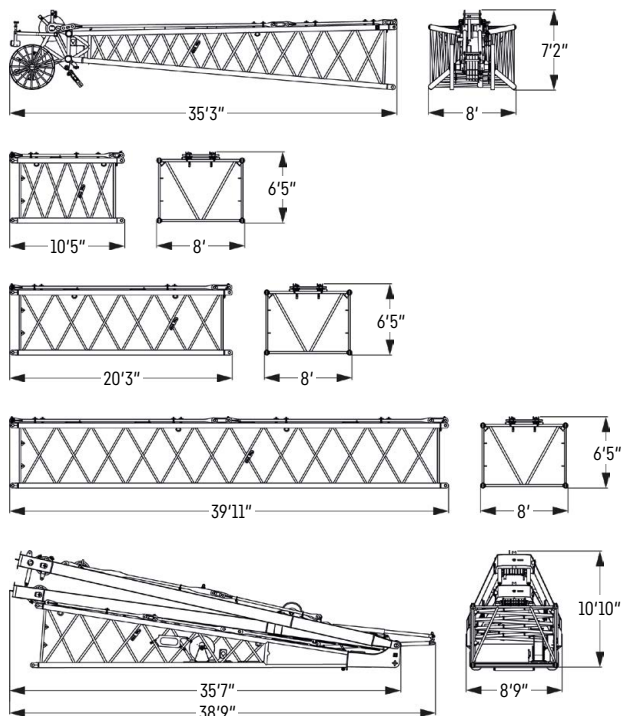
Jib section 40 ft (No. 1916.18)

Weight including pendants	lbs 2,749
---------------------------	-----------

Jib foot 23 ft with A-frame (No. 1916.22)

Weight including pendants	lbs 6,208
---------------------------	-----------

Luffing jib 2316.xx



Jib head 33 ft (No. 2316.20)

Weight including pendants	lbs 5,410
---------------------------	-----------

Jib section 10 ft (No. 2316.20)

Weight including pendants	lbs 1,347
---------------------------	-----------

Jib section 20 ft (No. 2316.20)

Weight including pendants	lbs 2,119
---------------------------	-----------

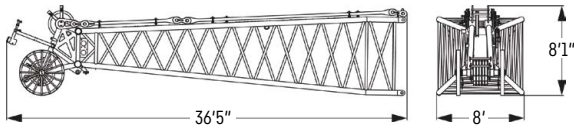
Jib section 40 ft (No. 2316.20)

Weight including pendants	lbs 3,968
---------------------------	-----------

Jib foot 33 ft with A-frames 2 + 3 (No. 2316.22)

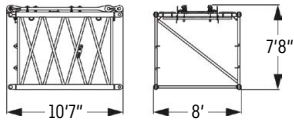
Weight including pendants	lbs 18,096
---------------------------	------------

Luffing jib 2421.xx



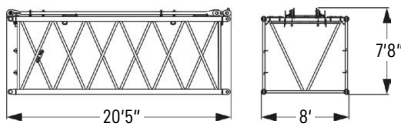
Jib head 33 ft (No. 2421.25)

Weight including pendants	lbs 7,762
---------------------------	-----------



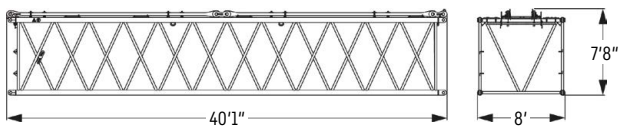
Jib section 10 ft (No. 2421.23)

Weight including pendants	lbs 1,993
---------------------------	-----------



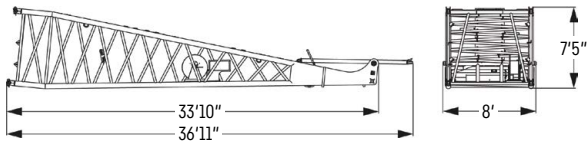
Jib section 20 ft (No. 2421.23)

Weight including pendants	lbs 2,992
---------------------------	-----------



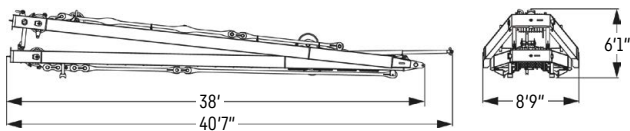
Jib section 40 ft (No. 2421.23)

Weight including pendants	lbs 5,384
---------------------------	-----------



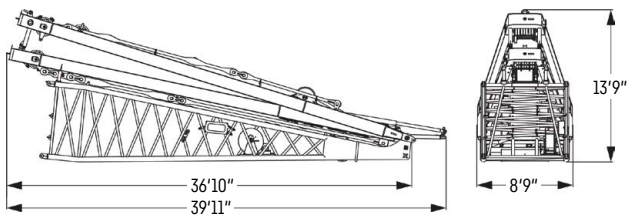
Jib foot 33 ft (No. 2421.32)

Weight including pendants	lbs 7,480
---------------------------	-----------



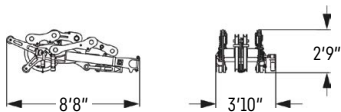
A-frames 2 + 3

Weight	lbs 13,045
--------	------------



Transport option – jib foot 33 ft with A-frames 2 + 3 (No. 2421.32)

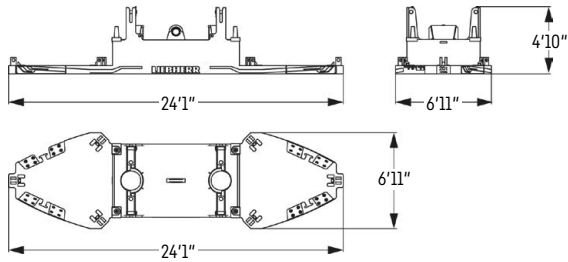
Weight including pendants	lbs 20,525
---------------------------	------------



Auxiliary jib

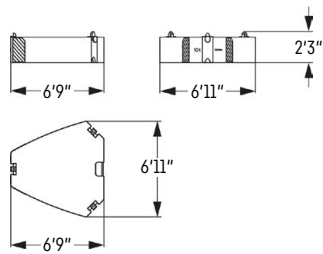
Weight	lbs 1,984
--------	-----------

Counterweight



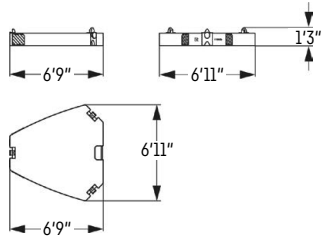
Basic counterweight slab without tie-down (1x)

Weight	lbs 44,100
--------	------------



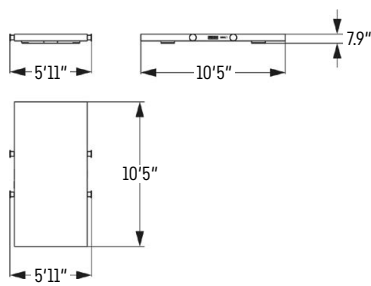
Counterweight slab (12x)

Weight	lbs 22,000
--------	------------



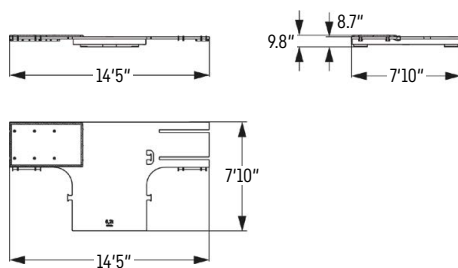
Counterweight slab (2x)

Weight	lbs 11,000
--------	------------



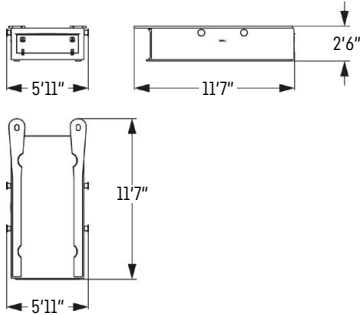
Carbody counterweight slab (2x)

Weight	lbs 13,700
--------	------------



Carbody counterweight slab with assembly platform (2x) (option)

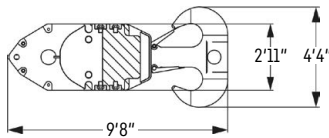
Weight	lbs 13,700
--------	------------



Carbody counterweight (2x)

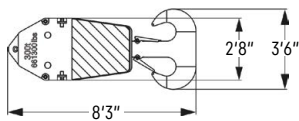
Weight	lbs 44,100
--------	------------

Pulley block with additional weights / load hooks



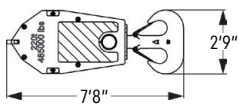
948,000 lbs pulley block - 13 pulleys

Width	7'9"
Weight	lbs 12,125 / 14,330 / 16,535 / 18,739 / 20,944



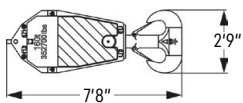
661,300 lbs pulley block - 11 pulleys

Width	4'
Weight	lbs 7,055 / 12,125



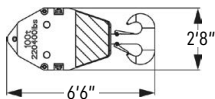
485,000 lbs pulley block - 7 pulleys

Width	4'3"
Weight	lbs 4,409 / 8,554 / 12,699



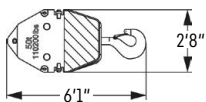
352,700 lbs pulley block - 5 pulleys

Width	3'
Weight	lbs 3,527 / 6,173 / 8,818



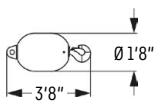
220,400 lbs pulley block - 3 pulleys

Width	2'
Weight	lbs 2,425 / 4,519 / 6,614



110,200 lbs pulley block - 1 pulley

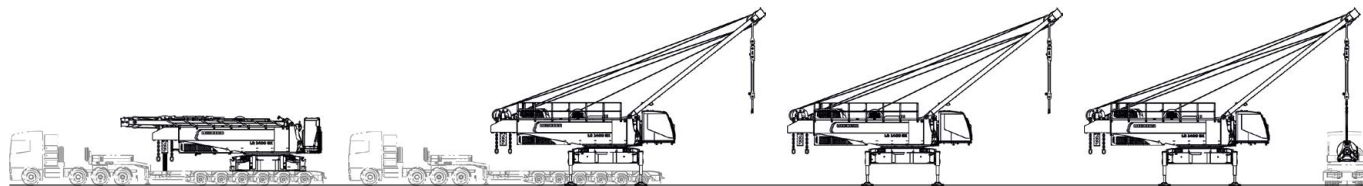
Width	1'9"
Weight	lbs 1,764 / 3,527 / 5,291



35,200 lbs load hook

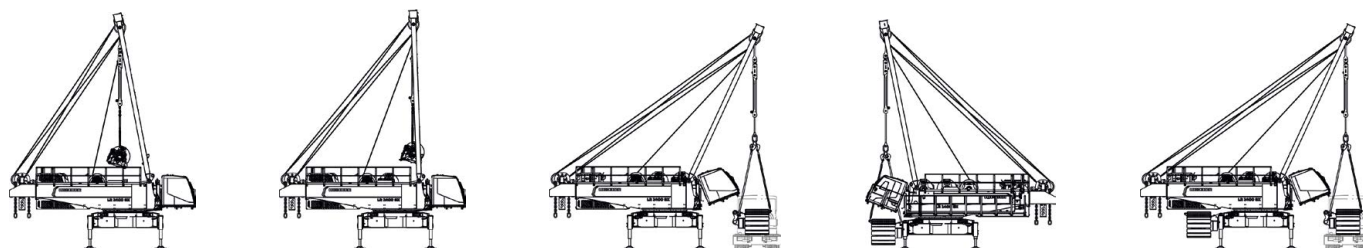
Weight	lbs 1,984
--------	-----------

Self-assembly system

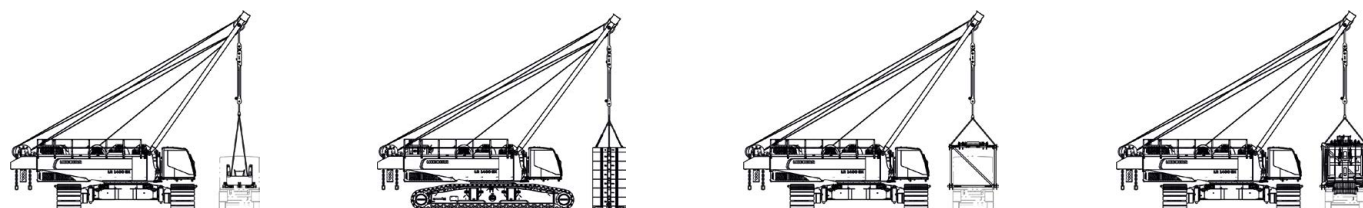


Unloading of basic machine

Unloading and mounting of winches

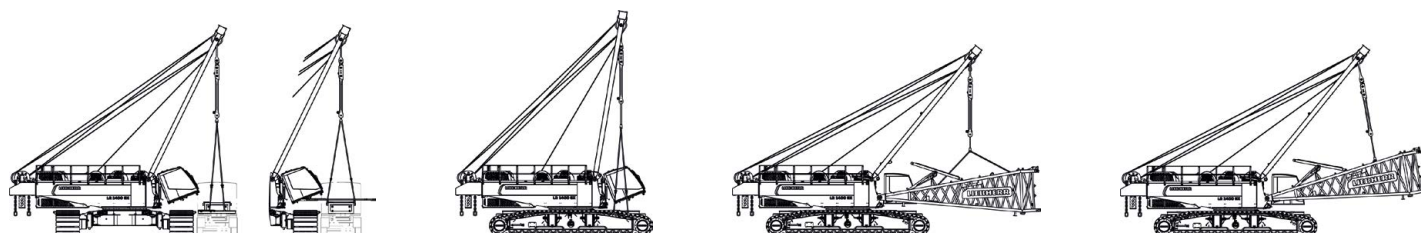


Unloading and assembly of crawler side frames



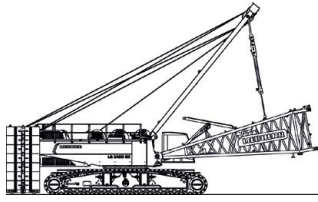
Unloading and assembly of rear counterweight

Unloading and assembly of boom

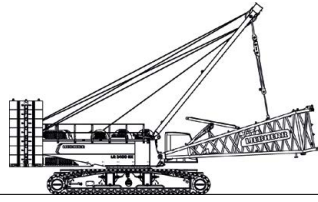


Unloading and assembly of carbody counterweight

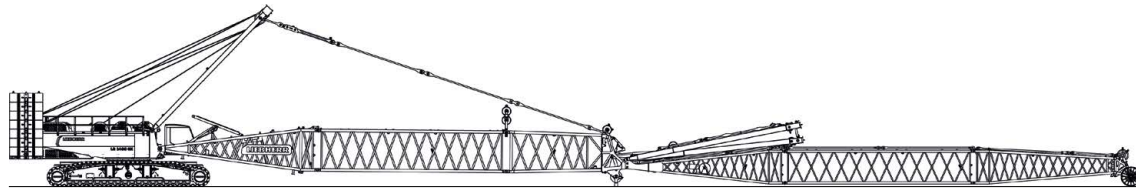
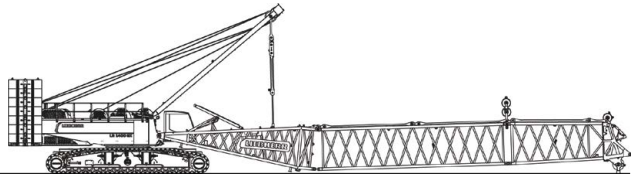
Assembly of boom foot



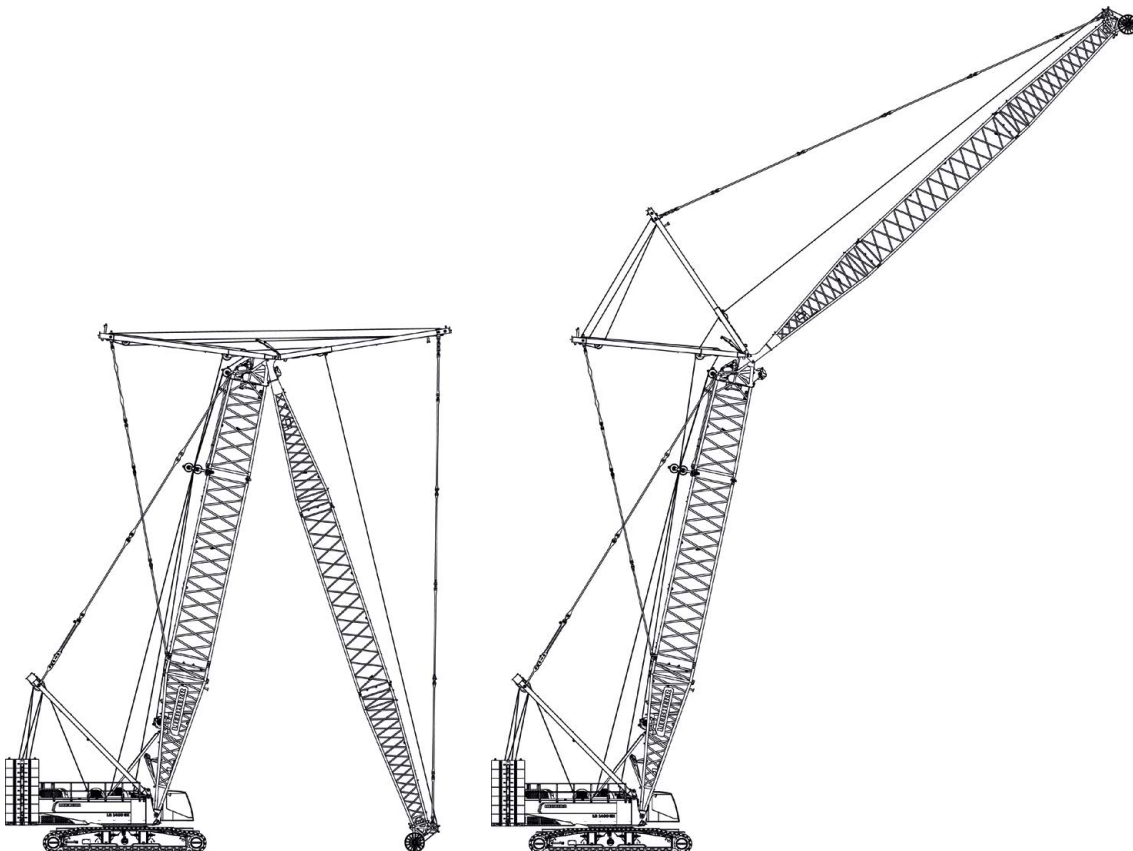
Assembly of rear counterweight



Assembly of main boom

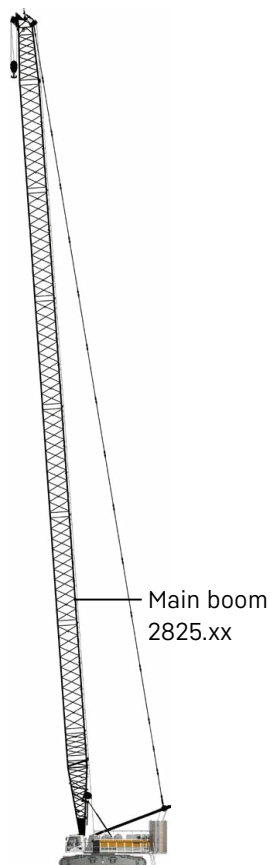


Assembly of luffing jib, reeving of hoist and luffing jib ropes



Erecting of main boom and luffing jib

Boom combinations



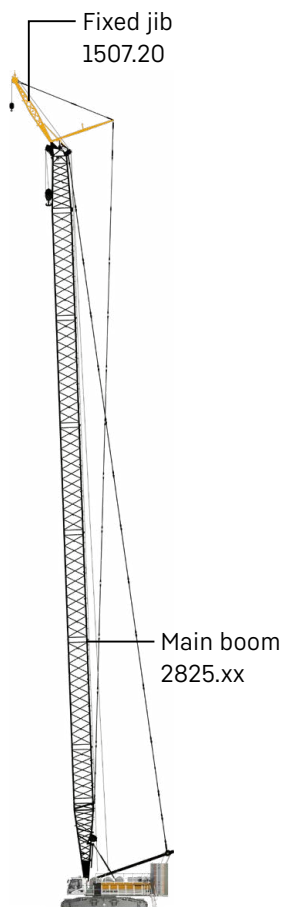
Main boom

Mode 1

Max. length

2825.xx ft 312

Further information on page 22.



Main boom + fixed jib

Mode 3

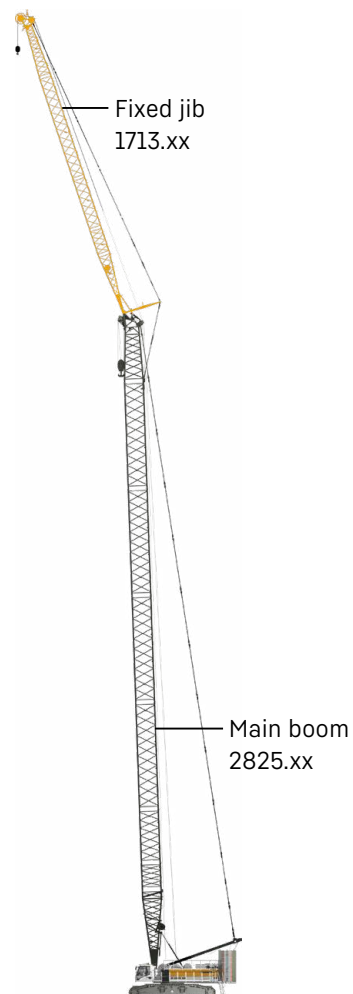
Max. combination

2825.xx ft 282

1507.20 ft 26

Total length ft 308

Further information on page 36.



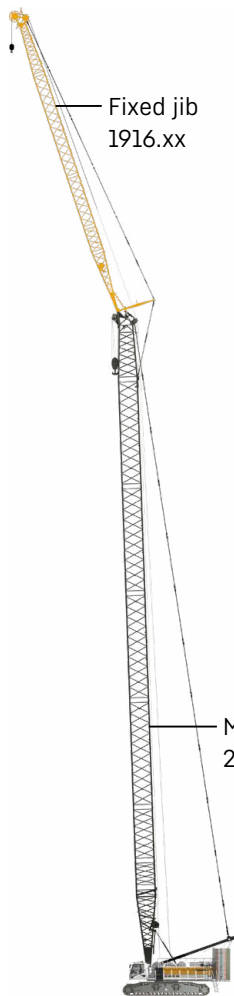
Main boom + fixed jib

Mode 3

Max. combination

	30°	15°
2825.xx	ft 262	262
1713.xx	ft 115	115
Total length	ft 377	377

Further information on page 40.

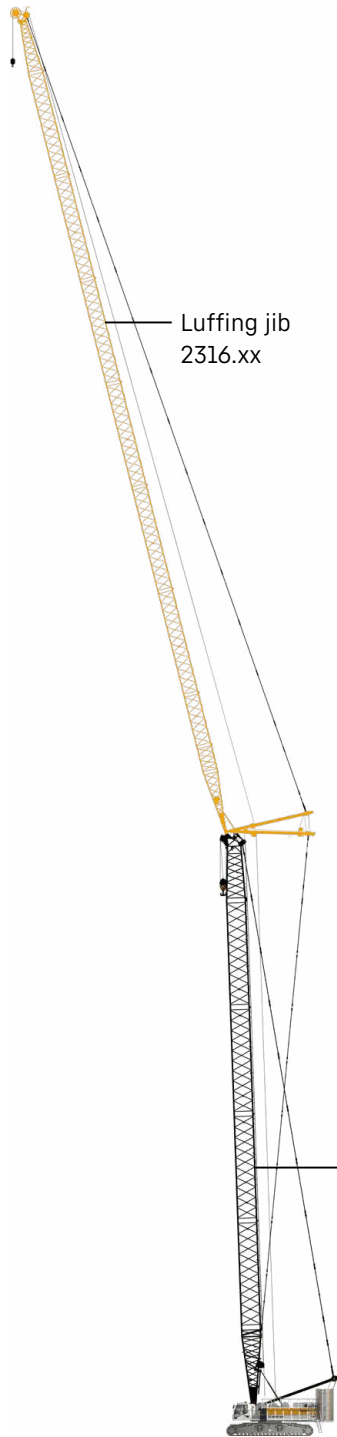


Main boom + fixed jib

Mode 3

Max. combination		30°	15°
2825.xx	ft	253	253
1916.xx	ft	164	164
Total length	ft	417	417

Further information on page 38.

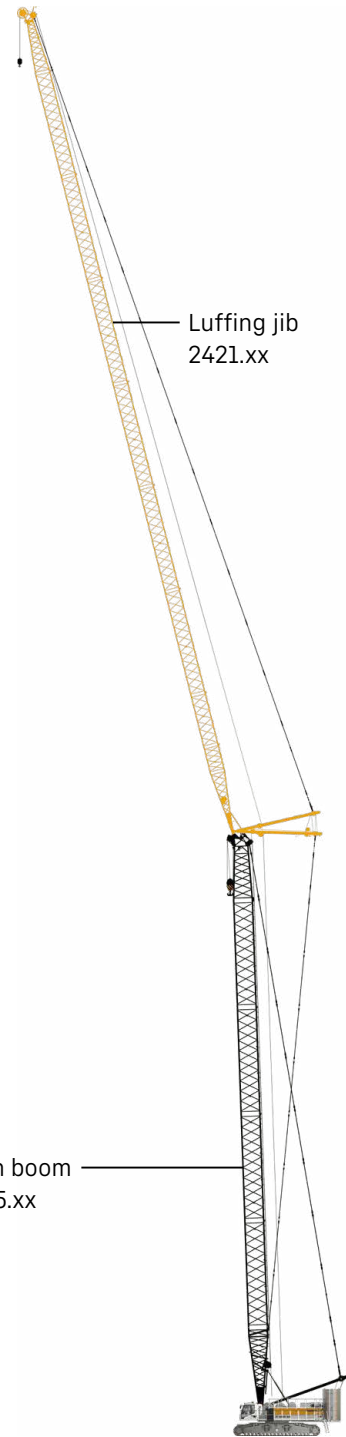


Main boom + luffing jib

Mode 4

Max. combination		243	233	223	213
2825.xx	ft	243	233	223	213
2316.xx	ft	164	243	322	371
Total length	ft	407	476	545	584

Further information on page 30.



Main boom + luffing jib

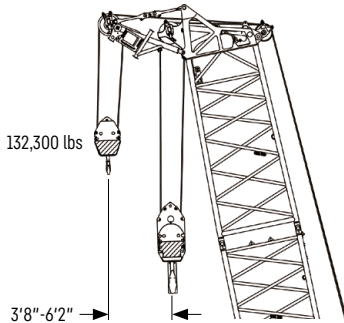
Mode 4

Max. combination		233	223	213	203
2825.xx	ft	233	223	213	203
2421.xx	ft	164	223	302	361
Total length	ft	397	446	515	564

Further information on page 24.

Main boom 2825.xx

Boom lengths 66-312 ft



Auxiliary jib 132,300 lbs (option)

The maximum capacity of the auxiliary jib is 132,300 lbs. The corresponding load chart is programmed in the LML system.

Main boom configuration 2825.xx

Boom section	Amount of boom sections												
Boom foot 33 ft	1	1	1	1	1	1	1	1	1	1	1	1	1
Boom section 10 ft	1		1		1		1		1		1		1
Boom section 20 ft		1	1			1	1			1	1		
Boom section 40 ft				1	1	1	1	2	2	2	2	3	3
Boom head 23 ft	1	1	1	1	1	1	1	1	1	1	1	1	1
Boom length [ft]	66	75	85	95	105	115	125	134	144	154	164	174	184
Auxiliary jib	✓	✓	✓	✓	✓	✓	✓	✓	✓	✓	✓	✓	✓
Boom foot 33 ft	1	1	1	1	1	1	1	1	1	1	1	1	1
Boom section 10 ft		1		1		1		1		1		1	
Boom section 20 ft	1	1			1	1			1	1			1
Boom section 40 ft	3	3	4	4	4	4	5	5	5	5	6	6	6
Boom head 23 ft	1	1	1	1	1	1	1	1	1	1	1	1	1
Boom length [ft]	194	203	213	223	233	243	253	262	272	282	292	302	312
Auxiliary jib	✓	✓	✓	✓	✓	✓	✓	✓	✓	✓	✓	✓	✓

Actual lengths of boom sections are metric (e.g. 3 m, 6 m). The figures shown above are approximate conversions to feet.

Load capacities with main boom

Load capacities in 1000 lbs

	Boom length [ft]											
	66	85	105	144	164	184	203	223	243	262	292	312
16.1	881.8 *											
20	761.2	756.5	756.4									
25	617.2	611.1	609.8	595.5	586.1	533.8						
30	521.2	513.8	512.5	502.1	493.6	482.2	438.6	396.4	348.8	316.0		
35	444.9	443.9	438.4	428.8	423.9	420.2	403.2	377.3	339.4	313.8	263.4	233.7
40	392.9	387.7	384.9	378.1	370.9	365.0	351.4	337.3	323.7	303.4	257.9	231.7
45	347.2	344.1	342.4	334.0	330.7	323.2	310.5	298.7	287.2	276.3	251.2	226.2
50	313.1	310.8	306.3	299.7	295.4	288.2	277.4	267.3	257.3	247.9	234.2	222.2
55	274.3	274.4	274.2	272.2	267.2	259.5	250.1	241.2	232.4	224.0	211.9	204.0
60	243.2	243.4	243.2	241.2	239.8	235.5	227.1	219.2	211.3	203.8	192.8	185.6
65	217.8	218.1	218.1	216.0	214.6	213.4	207.5	200.4	193.2	186.4	176.3	169.7
70	196.4	197.5	197.3	195.1	193.7	192.4	190.6	184.1	177.5	171.2	161.9	155.8
75		179.9	179.8	177.6	176.2	174.8	173.3	169.9	163.7	157.9	149.2	413.5
80		164.8	164.9	162.7	161.2	159.8	158.2	156.8	151.6	146.1	138.0	132.6
90		140.0	140.6	138.5	137.0	135.6	134.0	132.5	130.8	126.2	118.9	114.0
95			130.7	128.6	127.1	125.7	124.0	122.5	120.8	117.8	110.8	406.1
105			113.7	112.0	110.4	109.1	107.4	105.8	104.0	102.4	96.6	92.2
110				104.9	103.4	102.0	100.3	98.7	97.0	95.3	90.4	86.2
120				92.7	91.2	89.8	88.1	86.5	84.7	83.1	79.5	75.4
125				87.4	85.9	84.6	82.8	81.2	79.4	77.8	74.6	70.6
130				82.5	81.1	79.7	78.0	76.4	74.6	72.9	70.1	66.2
140				73.8	72.5	71.1	69.4	67.8	66.0	64.3	61.7	58.2
145				69.8	68.6	67.3	65.6	64.0	62.2	60.5	57.9	54.6
150					65.1	63.8	62.1	60.5	58.7	57.0	54.4	51.3
160					58.6	57.4	55.7	54.2	52.3	50.6	47.6	45.1
165					55.5	54.5	52.8	51.3	49.4	47.6	44.5	42.3
170						51.8	50.1	48.6	46.7	44.7	41.6	39.4
180						46.7	45.2	43.6	41.4	39.5	36.4	34.4
185						44.3	42.9	41.2	39.0	37.1	34.3	32.0
190							40.6	38.9	36.8	35.1	32.0	29.8
200							36.3	34.9	32.8	30.9	27.8	25.6
205							34.5	32.9	30.9	28.9	25.9	23.6
210								31.1	29.0	27.1	24.0	21.8
215								29.2	27.2	25.3	22.3	20.0
220								27.5	25.6	23.6	20.6	18.4
230									22.4	20.5	17.5	15.2
235									20.8	19.0	16.0	13.8
240									19.4	17.6	14.6	12.4
250										14.9	12.0	9.8
255										13.6	10.8	8.5
260										12.4	9.6	7.4
270											7.3	
275											6.2	
280											5.2	
290												

* with heavy lift configuration

Carbody counterweight: 116,000 lbs with 4.9 ft flat track pads

Rear counterweight:

221,600 lbs	310,700 lbs
265,700 lbs	332,700 lbs



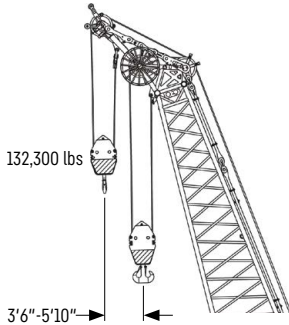
TLT 13630772 / 306561. Above load charts are for reference only. For actual lift duty please refer to load chart in operator's cabin or manual. Otherwise we recommend you to plan your lifting job using Crane Planner 2.0.

www.liebherr.com/CranePlanner

Crane Planner 2.0

Luffing jib 2421.xx

Jib lengths 66-361 ft



Auxiliary jib 132,300 lbs (option)

The maximum capacity of the auxiliary jib is 132,300 lbs.

Jib configuration 2421.xx

Jib section	Amount of jib sections															
	66	76	85	95	105	115	125	134	144	154	164	174	184	194	203	213
Jib foot 33 ft	1	1	1	1	1	1	1	1	1	1	1	1	1	1	1	1
Jib section 10 ft		1		1		1		1		1		1		1		1
Jib section 20 ft			1	1		1		1		1		1		1		1
Jib section 40 ft					1	1	1	1	2	2	2	2	3	3	3	3
Jib head 33 ft	1	1	1	1	1	1	1	1	1	1	1	1	1	1	1	1
Jib length [ft]	66	76	85	95	105	115	125	134	144	154	164	174	184	194	203	213
Auxiliary jib	✓	✓	✓	✓	✓	✓	✓	✓	✓	✓	✓	✓	✓	✓	✓	✓
Jib foot 33 ft	1	1	1	1	1	1	1	1	1	1	1	1	1	1	1	1
Jib section 10 ft		1		1		1		1		1		1		1		1
Jib section 20 ft			1	1		1		1		1		1		1		1
Jib section 40 ft	4	4	4	4	5	5	5	5	6	6	6	6	7	7	7	7
Jib head 33 ft	1	1	1	1	1	1	1	1	1	1	1	1	1	1	1	1
Jib length [ft]	223	233	243	253	262	272	282	292	302	312	322	331	341	351	361	
Auxiliary jib	✓	✓	✓	✓	✓	✓	✓	✓	✓	✓	✓	✓	✓	✓	✓	✓

Actual lengths of boom sections are metric (e.g. 3 m, 6 m). The figures shown above are approximate conversions to feet. For main boom configuration please refer to the table on page 22.

Load capacities with luffing jib

Load capacities in 1000 lbs with 66 ft main boom [88/83/75/65°]

Radius [ft]	Jib length 66 ft				Jib length 125 ft				Jib length 184 ft			
	88°	83°	75°	65°	88°	83°	75°	65°	88°	83°	75°	65°
27.5	337.1											
35	337.1											
40	318.1	337.1			288.0							
50	252.3	296.5			239.5							
60	199.6	230.0	250.7		190.1	215.6			171.8			
70	151.6	142.4	206.0		156.4	173.3			147.2			
80		122.5	174.3	169.3	133.8	146.3			126.3	138.5		
90			137.5	146.5	115.4	124.5	143.1		107.8	118.4		
100				128.6	102.3	106.4	123.2		95.5	102.6		
110					89.9	87.2	107.6		84.8	90.8	103.2	
115					84.8	79.4	101.8	106.1	80.0	85.2	96.2	
120					77.8	73.0	95.4	100.7	75.7	80.1	89.7	
130					63.6	67.8	85.1	91.3	68.7	71.8	79.8	
140							76.5	83.3	62.2	64.1	71.2	
150								76.4	56.3	56.0	65.3	72.5
160									51.3	49.0	58.8	66.0
170									46.1	43.9	53.6	60.0
180									40.3	41.2	49.5	54.1
185									37.5	39.9	47.6	51.7
195										37.2	43.8	47.9
200											41.8	46.0
215												40.4
Radius [ft]	Jib length 243 ft				Jib length 312 ft				Jib length 331 ft			
	88°	83°	75°	65°	88°	83°	75°	65°	88°	83°	75°	65°
65	107.0											
80	103.7				53.9							
90	95.3				52.5				44.5			
100	89.1	96.6			50.9				42.9			
110	78.7	85.0			49.0				41.5			
120	69.8	75.2			47.6	50.0			40.0	40.1		
130	64.0	67.5			45.9	47.3			38.9	39.1		
140	57.6	61.0	67.5		43.9	45.2			37.5	38.0		
150	52.0	54.8	60.4		42.3	43.3			36.2	37.0		
160	47.4	49.6	54.9		40.9	41.7			35.1	35.8		
170	43.5	45.5	49.3		37.4	40.3	40.9		34.2	34.9	33.5	
180	39.6	41.1	45.0	49.0	33.3	36.2	38.3		30.9	33.8	33.2	
200	33.0	33.1	37.8	41.6	26.2	30.2	33.5		23.6	27.5	30.8	
220	27.6	27.4	32.0	35.2	20.9	25.1	27.6	29.0	18.2	23.1	25.8	
230	24.5	25.5	29.8	33.0	18.4	22.4	25.4	27.8	15.9	21.2	23.4	
240	21.5	23.6	27.6	30.6	16.0	19.9	22.9	25.2	13.5	18.6	21.3	23.7
250		21.7	25.3	28.2	13.9	17.6	20.5	23.0	11.3	16.1	19.2	21.4
260			23.0	25.9	12.1	15.4	18.3	21.1	9.2	13.7	16.9	19.3
270				23.6	10.2	13.5	16.3	19.0	7.3	11.6	14.8	17.7
280							14.6	17.2	5.6	9.6	12.9	15.8
300								11.1	14.0			12.5
325							6.7	9.2				8.3

Carbody counterweight: 116,000 lbs with 4.9 ft flat track pads

Rear counterweight:

265,700 lbs

310,700 lbs

332,700 lbs



TLT 13630772 / 306561. Above load charts are for reference only. For actual lift duty please refer to load chart in operator's cabin or manual. Otherwise we recommend you to plan your lifting job using Crane Planner 2.0.

www.liebherr.com/CranePlanner

Crane Planner 2.0

Load capacities with luffing jib

Load capacities in 1000 lbs with 105 ft main boom [88/83/75/65°]

Radius [ft]	Jib length 66 ft				Jib length 125 ft				Jib length 184 ft			
	88°	83°	75°	65°	88°	83°	75°	65°	88°	83°	75°	65°
28.8	337.1											
35	337.1											
45	321.8	337.1			284.0							
55	252.0	280.5			239.2				171.6			
65	202.8	229.8			196.8	216.7			163.1			
75	154.3	191.8	184.0		165.8	188.3			148.4			
80		176.8	169.9		152.7	174.8			142.5	156.8		
90			146.9		132.6	150.2			123.4	140.6		
100			129.0	122.6	116.7	130.7	126.4		108.0	122.0		
110				109.1	102.7	115.1	112.4		95.4	107.6		
120					91.0	102.2	101.1		84.3	94.9	97.9	
130					78.2	91.1	91.6	86.0	75.6	83.7	88.5	
140						79.0	83.6	78.4	68.1	75.3	80.6	
150							76.7	72.0	61.3	67.8	73.9	
160								66.4	55.4	58.1	68.0	
170								61.4	50.7	55.4	62.9	58.3
180									46.3	50.8	58.2	54.0
190									41.7	46.3	53.3	50.3
200											48.8	46.9
210											44.3	43.8
220												41.0
230												38.5
Radius [ft]	Jib length 253 ft				Jib length 312 ft				Jib length 361 ft			
	88°	83°	75°	65°	88°	83°	75°	65°	88°	83°	75°	65°
70	89.6											
80	87.7											
90	85.4				49.7							
100	83.3	83.7			48.2				29.0			
110	79.6	82.6			46.6				27.7			
120	73.3	80.9			45.3	47.6			26.6			
130	68.3	74.4			44.1	46.5			25.5	25.5		
140	63.5	68.8			42.7	45.4			24.6	25.1		
150	57.3	63.5	69.8		41.6	44.3			23.7	24.1		
160	51.9	57.2	64.0		40.6	43.2			22.7	23.4		
170	47.4	51.8	58.9		38.8	42.4			21.8	22.6		
180	43.7	47.4	54.4		36.0	40.2	38.8		21.1	21.8		
190	40.0	43.6	49.3		33.6	37.1	38.2		20.3	21.2		
200	36.7	39.9	45.3		31.5	34.3	37.6		18.5	20.4	19.9	
220	31.1	33.7	38.2	37.0	27.8	30.0	32.8		15.5	17.5	18.9	
240	25.5	28.2	32.5	32.3	23.4	25.6	28.8	28.7	13.3	15.2	17.3	
260		22.2	28.0	28.3	19.7	21.5	24.4	24.6			15.5	
280			23.3	24.7	16.3	18.1	20.6	21.0				13.8
300				21.6	12.5	14.6	17.6	18.0				11.0
320						11.0	14.8	15.4				8.3
340								13.0				5.5
350								11.9				

Carbody counterweight: 116,000 lbs with 4.9 ft flat track pads

Rear counterweight:

265,700 lbs

310,700 lbs

332,700 lbs

TLT 13630772 / 306561. Above load charts are for reference only. For actual lift duty please refer to load chart in operator's cabin or manual. Otherwise we recommend you to plan your lifting job using Crane Planner 2.0.

Load capacities with luffing jib

Load capacities in 1000 lbs with 154 ft main boom [88/83/75/65°]

Radius [ft]	Jib length 66 ft				Jib length 125 ft				Jib length 184 ft			
	88°	83°	75°	65°	88°	83°	75°	65°	88°	83°	75°	65°
30.5	337.1											
40	337.1											
50	289.2	277.9			239.8							
60	235.1	253.9			214.4				148.0			
70	190.8	201.8			182.0	184.6			144.1			
80		174.2	162.1		157.3	162.6			138.2			
90		150.6	140.2		135.6	145.1			125.1	133.6		
100			123.3		119.3	130.2			110.1	120.4		
110			109.7		105.0	115.9	106.5		98.2	109.4		
120				89.8	93.8	104.2	95.7		86.5	100.1		
130				81.4	82.0	94.4	86.7		77.3	90.3	82.4	
140						86.2	79.1		69.9	80.4	75.8	
150							72.6	64.7	63.0	72.7	69.4	
160							66.9	59.6	57.1	65.6	63.8	
170							61.9	55.2	52.2	59.3	59.0	
180								51.2	47.8	54.1	54.7	
190								47.7	43.3	49.7	50.8	44.2
200										45.2	47.4	41.2
210											44.4	38.4
220											41.5	36.0
230												33.7
250												29.7
Radius [ft]	Jib length 243 ft				Jib length 312 ft				Jib length 361 ft			
	88°	83°	75°	65°	88°	83°	75°	65°	88°	83°	75°	65°
70	88.5											
80	87.7											
90	86.5				45.6							
100	85.2				44.2				25.4			
110	81.7	85.1			43.0				24.2			
120	76.2	84.0			41.8				23.4			
130	71.9	79.6			40.8	41.7			22.3			
140	66.7	74.1			39.6	40.7			21.5	22.0		
150	60.4	69.6			38.5	39.9			20.8	21.5		
160	55.0	62.7	58.3		37.6	38.9			19.8	20.7		
170	50.6	56.8	54.2		36.6	38.1			19.0	20.1		
180	46.6	52.0	50.4		34.7	37.4			18.4	19.3		
190	42.7	47.8	47.1		33.1	35.7	35.3		17.8	18.6		
200	39.2	43.9	44.0		31.6	34.0	35.0		16.7	18.1		
220	33.5	37.1	38.3	31.4	29.1	31.2	31.8		14.5	16.4	16.6	
240	28.7	32.1	33.6	27.5	24.6	27.6	27.5		12.8	14.7	15.8	
260		27.3	29.5	23.8	20.8	23.4	23.8	17.2		13.4	14.2	
280			25.9	20.6	17.5	19.8	20.7	14.5			12.7	
300				17.8	13.8	17.0	17.9	12.0			10.1	7.6
320						14.2	15.5	9.9			7.0	5.5
340							13.3	8.0				
365								5.9				

Carbody counterweight: 116,000 lbs with 4.9 ft flat track pads

Rear counterweight:

265,700 lbs

310,700 lbs

332,700 lbs

TLT 13630772 / 306561. Above load charts are for reference only. For actual lift duty please refer to load chart in operator's cabin or manual. Otherwise we recommend you to plan your lifting job using Crane Planner 2.0.

Load capacities with luffing jib

Load capacities in 1000 lbs with 203 ft main boom [88/83/75/65°]

Radius (ft)	Jib length 66 ft				Jib length 125 ft				Jib length 184 ft			
	88°	83°	75°	65°	88°	83°	75°	65°	88°	83°	75°	65°
32.3	291.5											
40	271.0											
45	255.8				190.0							
50	242.6				187.3							
60	222.8	211.0			173.4				117.5			
70	193.7	183.1			160.9				117.5			
80	151.9	161.8			150.3	148.0			113.9			
90		145.0			133.4	132.4			109.2			
100			113.7		121.4	119.7			102.8	114.7		
120			92.6		96.0	100.2	85.5		87.0	91.5		
140				65.2		84.0	72.8		72.0	77.9		
150				59.8		77.1	67.4		65.0	72.4	60.2	
160				55.0			62.1		58.8	67.5	55.9	
170							57.4	46.7	53.6	63.1	51.1	
180							53.3	43.7	49.5	58.0	48.7	
190								40.7	45.3	53.4	45.6	
200								37.9		49.1	42.8	
220											37.9	27.8
240											33.3	24.4
260												21.5
270												20.2
275												19.5
Radius (ft)	Jib length 243 ft				Jib length 312 ft				Jib length 361 ft			
	88°	83°	75°	65°	88°	83°	75°	65°	88°	83°	75°	65°
70	74.6											
80	74.4											
90	74.2				40.9							
100	73.9				39.7				22.2			
110	72.8	71.5			38.6				21.3			
120	69.6	71.5			37.5				20.5			
130	66.9	71.3			36.7	37.2			19.4			
140	64.1	70.3			35.6	36.8			18.6			
150	59.3	65.1			34.6	36.0			18.0	18.7		
160	55.2	60.4			33.7	35.3			17.0	18.0		
170	51.7	56.2	45.0		33.0	34.4			16.2	17.4		
180	48.3	52.5	41.8		31.9	33.7			15.5	16.7		
200	40.8	46.0	36.3		30.1	32.3	28.9		14.1	15.4		
220	34.9	40.2	31.7		28.8	30.8	24.6		12.1	14.2	13.6	
230	32.5	37.2	29.6		26.8	30.2	22.6		11.2	13.3	13.6	
240	30.1	34.6	27.8	18.1	24.8	29.0	20.9		10.4	12.5	13.2	
260		30.0	24.4	15.4	21.1	24.7	17.7			11.1	12.6	
280			21.5	13.0	18.3	21.1	14.9	6.1			10.5	
300				10.9	14.5	18.3	12.5				8.2	
320				9.1		15.5	10.4				6.1	
330				8.3		14.0	9.4				5.2	
360							6.8					

Carbody counterweight: 116,000 lbs with 4.9 ft flat track pads

Rear counterweight:

265,700 lbs

310,700 lbs

332,700 lbs

TLT 13630772 / 306561. Above load charts are for reference only. For actual lift duty please refer to load chart in operator's cabin or manual. Otherwise we recommend you to plan your lifting job using Crane Planner 2.0.

Load capacities with luffing jib

Load capacities in 1000 lbs with 233 ft main boom [88/83/75/65°]

Radius (ft)	Jib length 66 ft				Jib length 105 ft				Jib length 125 ft			
	88°	83°	75°	65°	88°	83°	75°	65°	88°	83°	75°	65°
33.3	246.1											
45	221.0				185.4							
50	210.9				180.8				163.0			
60	195.2	197.5			166.3				151.5			
65	187.6	183.8			159.5				147.0			
75	170.5	161.5			148.2	152.1			136.0			
80	154.3	152.2			142.7	143.4			132.3	139.0		
90		136.6			132.7	128.6			122.5	124.6		
100		124.2	103.5		120.7	116.4			115.5	112.8		
110			94.6		109.0	106.3			104.8	102.9		
120			86.4		35.2	97.8	80.4		96.0	94.5		
130			79.8			90.5	74.1		85.9	87.3	71.0	
135			35.2			87.1	71.2		80.2	84.1	68.3	
140						83.2	68.6			81.1	65.7	
155				51.1			63.8			72.5	58.9	
160				49.3			59.6			35.2	56.9	
170				45.9				41.2			53.2	
180								38.5			49.9	
190								36.1			46.8	33.5
200								33.8				31.4
210								31.8				29.4
225												26.8
Radius (ft)	Jib length 144 ft				Jib length 154 ft				Jib length 164 ft			
	88°	83°	75°	65°	88°	83°	75°	65°	88°	83°	75°	65°
50	140.1											
55	139.8								117.5			
70	129.7				122.6				115.0			
80	121.0				115.4				111.0			
90	114.5	121.1			108.3	119.0			103.8	113.2		
100	106.5	109.6			102.0	107.6			98.7	106.2		
110	100.5	99.9			95.8	98.1			92.5	96.7		
120	92.3	91.7			90.8	90.0			87.5	88.7		
130	83.9	88.0			81.8	83.0			81.9	81.8		
140	77.0	78.5	63.2		74.0	76.9	61.5		74.4	75.7		
150	69.3	73.1	58.6		67.5	71.5	57.0		68.2	70.4	55.9	
160		68.4	54.6		61.1	66.8	53.0		62.5	65.7	52.0	
180			47.8			58.7	46.3			57.9	45.3	
200			42.2	29.3			40.8	27.8			39.8	
210				27.4			38.4	25.9			37.5	25.1
220				25.7			35.2	24.2			35.4	23.4
230				24.1				22.6			33.5	21.8
240				22.6				21.2				20.4
250								19.8				19.1
260												17.8
270												
285												

Carbody counterweight: 116,000 lbs with 4.9 ft flat track pads

Rear counterweight:

265,700 lbs

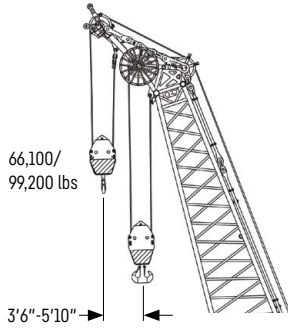
310,700 lbs

332,700 lbs

TLT 13630772 / 306561. Above load charts are for reference only. For actual lift duty please refer to load chart in operator's cabin or manual. Otherwise we recommend you to plan your lifting job using Crane Planner 2.0.

Luffing jib 2316.xx

Jib lengths 66-371 ft



Auxiliary jib 30/45 t (option)

The maximum capacity of the auxiliary jib is 30/45 t.

Jib configuration 2316.xx

Jib section	Amount of jib sections															
	1	2	3	4	5	6	7	8	9	10	11	12	13	14	15	16
Jib foot 33 ft	1	1	1	1	1	1	1	1	1	1	1	1	1	1	1	1
Jib section 10 ft		1		1		1		1		1		1		1		1
Jib section 20 ft			1	1			1	1			1	1			1	1
Jib section 40 ft					1	1	1	1	2	2	2	2	3	3	3	3
Jib head 33 ft	1	1	1	1	1	1	1	1	1	1	1	1	1	1	1	1
Jib length [ft]	66	76	85	95	105	115	125	134	144	154	164	174	184	194	203	213
Auxiliary jib	✓	✓	✓	✓	✓	✓	✓	✓	✓	✓	✓	✓	✓	✓	✓	✓
Jib foot 33 ft	1	1	1	1	1	1	1	1	1	1	1	1	1	1	1	1
Jib section 10 ft		1		1		1		1		1		1		1		1
Jib section 20 ft			1	1			1	1			1	1			1	1
Jib section 40 ft	4	4	4	4	5	5	5	5	6	6	6	6	7	7	7	7
Jib head 33 ft	1	1	1	1	1	1	1	1	1	1	1	1	1	1	1	1
Jib length [ft]	223	233	243	253	262	272	282	292	302	312	322	331	341	351	361	371
Auxiliary jib	✓	✓	✓	✓	✓	✓	✓	✓	✓	✓	✓	✓	✓	✓	✓	✓

Actual lengths of boom sections are metric (e.g. 3 m, 6 m). The figures shown above are approximate conversions to feet. For main boom configuration please refer to the table on page 22.

Load capacities with luffing jib

Load capacities in 1000 lbs with 66 ft main boom [88/83/75/65°]

Radius [ft]	Jib length 66 ft				Jib length 125 ft				Jib length 184 ft			
	88°	83°	75°	65°	88°	83°	75°	65°	88°	83°	75°	65°
30	258.0											
35	258.0											
40	240.0	258.0			167.7							
55	175.2	204.8			132.2				108.5			
60	150.5	183.6	239.7		122.6	135.8			103.5			
70	112.1	139.0	183.4		105.6	116.1			94.8			
75	89.7	121.1	159.3		98.2	108.1			90.9	97.5		
80		99.1	138.4	171.2	90.2	101.1			87.3	92.8		
90			98.3	137.7	77.5	85.8	101.7		76.7	84.5		
100				108.5	67.0	74.4	87.8		69.6	74.0		
110					57.8	64.4	76.7		61.0	66.4	73.6	
115					54.2	60.0	71.1	85.7	57.0	62.5	69.2	
130					43.7	49.0	58.1	68.2	48.2	53.4	59.0	
135						45.2	54.3	63.5	45.6	51.1	56.1	
145							46.6	56.1	41.0	45.9	51.7	54.9
155								48.8	37.0	41.3	46.8	50.8
165									33.6	37.5	42.5	46.4
175									29.7	33.6	39.2	40.9
185									25.7	29.4	35.2	36.5
195										25.2	31.2	35.0
200											29.2	33.2
215												27.9
Radius [ft]	Jib length 243 ft				Jib length 312 ft				Jib length 341 ft			
	88°	83°	75°	65°	88°	83°	75°	65°	88°	83°	75°	65°
65	68.1											
80	63.5				38.7							
90	59.0				37.3				28.8			
95	57.3	60.1			36.3				28.0			
105	53.5	57.0			34.2				26.4			
115	49.5	53.4			32.0	33.4			24.9			
130	44.9	46.8			29.2	30.6			22.8	23.8		
135	42.1	45.3	49.0		28.1	29.8			22.3	23.0		
150	34.8	38.7	42.9		25.3	26.8			19.8	21.1		
165	30.3	34.7	37.9		22.9	24.5	25.8		17.8	18.8		
180	26.3	30.8	34.8	36.3	19.1	21.6	23.5		16.0	17.1	18.2	
185	25.0	29.2	33.7	35.6	18.0	20.6	22.8		15.1	16.5	17.6	
200	21.4	24.9	29.2	32.7	15.5	18.1	20.5		12.5	14.2	15.9	
220	17.4	20.2	24.1	26.2	12.6	15.1	17.4	18.6	9.6	11.6	13.2	
230	15.4	18.0	21.9	22.7	11.0	13.4	16.2	17.9	8.5	10.6	11.7	
240	13.3	15.7	19.5	20.0	9.4	11.7	14.5	16.4			10.5	12.5
250		13.3	17.1	18.0	8.1	10.2	12.8	15.3				11.8
260			14.7	16.0	6.8	8.9	11.3	13.6				9.8
270				14.0	5.7	7.7	10.0	11.7				8.3
280							8.9	10.0				7.0
285								9.2				6.3
290								8.6				5.7

Carbody counterweight: 116,000 lbs with 4.9 ft flat track pads

Rear counterweight:

265,700 lbs

310,700 lbs

332,700 lbs



TLT 13630772 / 306561. Above load charts are for reference only. For actual lift duty please refer to load chart in operator's cabin or manual. Otherwise we recommend you to plan your lifting job using Crane Planner 2.0.

www.liebherr.com/CranePlanner

Crane Planner 2.0

Load capacities with luffing jib

Load capacities in 1000 lbs with 105 ft main boom [88/83/75/65°]

Radius (ft)	Jib length 66 ft				Jib length 125 ft				Jib length 184 ft			
	88°	83°	75°	65°	88°	83°	75°	65°	88°	83°	75°	65°
30	258.0											
45	253.1	258.0			161.5							
60	173.4	225.8			130.8				103.4			
65	149.7	200.4			121.2	139.0			100.3			
75	107.6	150.8	185.8		107.1	120.9			90.9			
80		131.7	171.7		99.3	113.3			87.4	95.5		
95			131.5	132.6	81.9	93.6	113.6		71.6	80.5		
105				117.7	70.8	83.1	101.0		64.4	70.4		
115				105.5	61.8	71.9	89.3		58.4	63.4		
130					50.5	59.1	73.4	89.0	51.0	54.6	62.8	
140						51.1	64.8	81.4	47.0	50.4	56.8	
150							56.7	77.6	43.3	46.4	51.6	
155							52.5	67.7	41.7	44.5	49.6	
165								60.1	38.9	41.2	45.9	54.5
175								52.3	35.2	38.2	42.6	48.1
190									28.5	33.1	38.6	42.9
200										29.5	35.5	39.9
210											33.0	37.6
215											31.5	36.5
220												35.4
225												34.2
230												33.2
Radius (ft)	Jib length 253 ft				Jib length 351 ft				Jib length 371 ft			
	88°	83°	75°	65°	88°	83°	75°	65°	88°	83°	75°	65°
70	54.7											
90	48.9				24.4							
95	47.6				24.2				20.5			
100	46.5	47.8			23.4				20.2			
130	40.7	41.8			19.2	19.9			16.8			
135	40.0	41.0			18.6	19.7			16.3	16.8		
150	33.9	38.7	39.6		16.7	17.8			15.0	15.7		
170	27.7	35.5	36.8		14.3	15.5			12.6	13.8		
180	24.2	34.4	35.2		13.4	14.4			11.7	12.7		
190	20.0	29.0	33.9		11.9	13.5	14.2		11.0	11.7		
200	16.2	23.1	32.9		10.1	12.0	13.6			11.0	11.7	
205	14.4	20.3	29.9	32.7	9.4	11.1	13.1				11.4	
225	9.2	10.9	17.7	23.0	6.6	8.1	11.1				9.1	
235	7.7	9.0	12.7	18.6	5.5	6.9	9.4				8.0	
240	7.0	8.3	10.6	16.5		6.4	8.7				7.3	
255	4.8	6.0	8.0	11.2			6.8				5.4	
260		5.3	7.3	9.7				7.2			4.8	
270			5.9	8.1				6.6				4.6
275			5.2	7.4				6.1				4.6
280			4.6	6.7				5.6				
290				5.4								
295				4.7								

Carbody counterweight: 116,000 lbs with 4.9 ft flat track pads

Rear counterweight:

265,700 lbs

310,700 lbs

332,700 lbs

TLT 13630772 / 306561. Above load charts are for reference only. For actual lift duty please refer to load chart in operator's cabin or manual. Otherwise we recommend you to plan your lifting job using Crane Planner 2.0.

Load capacities with luffing jib

Load capacities in 1000 lbs with 154 ft main boom [88/83/75/65°]

Radius [ft]	Jib length 66 ft				Jib length 144 ft				Jib length 184 ft			
	88°	83°	75°	65°	88°	83°	75°	65°	88°	83°	75°	65°
50	237.6	247.2			126.7							
60	186.1	236.2			114.6				95.2			
65	160.9	219.0			108.1				93.3			
75	119.0	181.2			96.2	112.0			88.6			
80		158.1	164.2		90.9	106.6			86.4			
90		117.1	142.3		81.7	95.3			77.0	88.0		
100			125.4		72.7	86.3			67.6	80.3		
105			118.3		69.2	81.2			64.1	75.0		
115				97.0	62.3	72.8	90.1		57.7	66.2		
130				83.8	52.9	62.3	78.4		50.3	57.2	68.4	
135				80.1	50.4	59.0	74.3		48.4	54.7	67.3	
150					42.3	50.6	64.2		52.9	48.7	57.3	
160						45.0	57.3	62.0	39.8	44.8	51.7	
165						42.2	54.4	59.7	38.4	43.1	49.5	
185							43.9	51.8	32.9	37.0	42.5	50.0
195								48.5		33.7	39.7	46.7
205								45.5		30.7	37.3	43.8
215								42.8			35.2	40.6
225											33.0	38.0
235												35.9
240												34.8
250												32.8
Radius [ft]	Jib length 243 ft				Jib length 312 ft				Jib length 361 ft			
	88°	83°	75°	65°	88°	83°	75°	65°	88°	83°	75°	65°
70	60.0											
85	58.3				33.5							
95	55.5				32.5				20.7			
105	53.4	55.8			31.4				19.9			
115	48.9	53.8			29.8				19.0			
125	45.3	51.2			28.7	29.8			18.1			
130	43.9	48.9			28.2	29.6			17.7			
140	40.6	45.0			26.6	28.4			17.0	17.4		
155	35.9	40.1	47.1		24.7	26.6			16.0	16.6		
170	32.9	35.4	42.7		23.0	24.6			15.0	15.6		
185	30.1	32.4	37.3		20.5	22.9	23.6		14.2	14.7		
200	27.5	29.6	33.7		18.4	20.4	22.8			14.0		
210	26.1	27.9	31.7		17.2	18.9	21.9				13.6	
220	24.6	26.4	29.8	35.0		17.7	20.9				13.3	
245	19.0	21.9	25.7	29.9			17.3				11.5	
260		18.8	23.5	27.2			15.5	17.7			8.2	
275			21.1	25.0			13.6	16.8			5.6	
285			19.5	23.8			12.4	15.6				8.5
305				21.6			10.4	13.3				6.8
325								11.0				
350								9.0				
375								7.2				

Carbody counterweight: 116,000 lbs with 4.9 ft flat track pads

Rear counterweight:

265,700 lbs

310,700 lbs

332,700 lbs

TLT 13630772 / 306561. Above load charts are for reference only. For actual lift duty please refer to load chart in operator's cabin or manual. Otherwise we recommend you to plan your lifting job using Crane Planner 2.0.

Load capacities with luffing jib

Load capacities in 1000 lbs with 203 ft main boom [88/83/75/65°]

Radius [ft]	Jib length 66 ft				Jib length 125 ft				Jib length 184 ft			
	88°	83°	75°	65°	88°	83°	75°	65°	88°	83°	75°	65°
35	206.0											
45	204.6				119.9							
60	192.5	202.6			119.9				73.9			
70	147.8	185.9			111.3				73.6			
75	128.3	174.5			106.1	118.2			73.5			
85		155.6			95.7	114.9			73.4			
95		122.7	123.0		86.5	104.2			68.5	71.0		
110			105.3		74.4	89.5			62.4	69.5		
120			94.8		67.7	81.6	90.1		56.1	65.2		
125			90.2		62.5	77.5	86.5		53.4	63.7		
135					54.2	70.5	80.0		49.0	57.3		
145				65.1		62.8	73.4		45.2	51.9	65.6	
160				57.6			65.1		40.1	46.0	58.6	
170							60.5	50.8	37.4	42.7	52.9	
180							56.3	47.3	35.2	39.8	48.3	
190								44.2	32.5	37.4	44.7	
205								40.1		34.4	40.1	36.7
215								37.6			37.6	34.7
225											35.6	32.8
240											32.9	29.9
255												27.3
275												24.3
Radius [ft]	Jib length 243 ft				Jib length 312 ft				Jib length 371 ft			
	88°	83°	75°	65°	88°	83°	75°	65°	88°	83°	75°	65°
70	46.5											
85	46.2				25.8							
100	46.0				25.5				13.6			
110	45.6	44.3			25.3				13.3			
130	43.7	44.2			25.0	24.2			12.6			
140	41.9	43.8			24.1	24.1			12.2			
150	38.4	43.4			23.1	24.0			12.0	11.7		
170	33.2	37.6	40.5		21.6	23.2			10.6	11.2		
185	30.3	33.7	39.9		19.6	22.5			9.7	10.6		
200	27.7	30.7	37.1		17.8	20.7	21.0			9.7		
210	26.2	28.9	34.5		16.8	19.4	20.8			9.3		
225	24.0	26.5	31.1			17.7	19.7				8.9	
240	21.0	24.4	28.3	25.1			18.5				8.5	
250	18.9	22.8	26.7	23.6			17.6				7.5	
265		20.4	24.7	21.6			16.4				6.3	
280			22.6	19.8			14.7	14.5			4.8	
285			21.8	19.3			14.4	14.0				
295			20.4	18.2			12.8	12.9				
310				16.7			11.2	11.5				
320				15.8			10.3	10.7				
335								9.5				
360								7.7				

Carbody counterweight: 116,000 lbs with 4.9 ft flat track pads

Rear counterweight:

265,700 lbs

310,700 lbs

332,700 lbs

TLT 13630772 / 306561. Above load charts are for reference only. For actual lift duty please refer to load chart in operator's cabin or manual. Otherwise we recommend you to plan your lifting job using Crane Planner 2.0.

Load capacities with luffing jib

Load capacities in 1000 lbs with 223 ft main boom [88/83/75/65°]

Radius (ft)	Jib length 75 ft				Jib length 125 ft				Jib length 184 ft			
	88°	83°	75°	65°	88°	83°	75°	65°	88°	83°	75°	65°
35	174.1											
50	172.2				111.2							
60	169.8				111.2				67.8			
70	157.9	169.8			106.7				67.6			
80	124.8	155.9			100.8	109.3			67.6			
90	93.7	140.0			90.1	106.7			66.6			
100		126.9			82.3	100.5			64.7	65.2		
105		111.3	103.7		78.3	95.0			63.9	65.2		
110		95.5	99.1		74.5	90.2			62.2	65.1		
125			87.2		64.3	78.7	81.4		53.0	62.7		
135			79.5		55.0	71.8	75.4		48.5	57.8		
150				58.2		60.6	67.8		42.9	49.8	60.2	
155				55.9		56.3	65.5		41.3	47.9	59.5	
165				51.8			60.7		38.3	44.4	55.6	
175				48.0			56.4		35.8	41.2	51.9	
185							52.6	42.3	34.0	38.5	47.4	
195								39.9	31.4	26.3	44.0	
200								38.6		35.2	42.3	
210								36.2		33.8	39.4	
225								33.0			36.1	28.8
245											32.8	25.7
280												21.2
Radius (ft)	Jib length 194 ft				Jib length 213 ft				Jib length 312 ft			
	88°	83°	75°	65°	88°	83°	75°	65°	88°	83°	75°	65°
60	62.4											
65	62.4				52.6							
85	62.3				52.2				23.4			
100	59.3	60.1			52.1				23.3			
120	53.8	58.8			52.1				23.1			
130	50.2	57.3			49.3	50.2			23.0			
145	46.0	52.4			44.6	49.5			22.1	22.0		
155	42.3	49.5	55.6		42.2	46.5			21.5	22.0		
160	40.6	48.3	55.6		40.9	45.2	46.2		21.2	21.9		
180	35.0	41.6	49.5		35.9	40.7	46.0		19.6	21.0		
200	28.8	36.0	43.9		32.1	36.2	42.0		17.3	19.8		
210		33.0	41.5		29.0	34.4	39.7		16.4	18.8	19.1	
220		29.9	39.3	28.6	25.8	31.9	37.5		15.6	17.9	19.0	
230			37.2	26.9		29.4	35.3	25.2		17.1	18.7	
240			34.4	25.4		26.8	33.6	23.7		16.4	18.4	
255			29.1	23.3			30.6	21.7			17.2	
270				21.5			27.2	19.9			16.3	
290				19.3				17.8			14.0	10.2
310								15.9			11.7	8.5
325											10.3	7.4
345												6.0
360												5.0

Carbody counterweight: 116,000 lbs with 4.9 ft flat track pads

Rear counterweight:

265,700 lbs

310,700 lbs

332,700 lbs

TLT 13630772 / 306561. Above load charts are for reference only. For actual lift duty please refer to load chart in operator's cabin or manual. Otherwise we recommend you to plan your lifting job using Crane Planner 2.0.

Fixed jib 1507.20

Jib length 26 ft

The jib length is 26 ft, for main boom configuration please refer to the table on page 22.

Load capacities with fixed jib

Load capacities in 1000 lbs – 184 ft main boom

Radius [ft]	Jib length 26 ft
30	257.9
35	256.6
40	254.3
50	247.5
60	222.6
70	194.6
80	162.7
100	118.6
120	90.9
140	71.7
160	57.8
180	46.9
195	40.2

Load capacities in 1000 lbs – 213 ft main boom

Radius [ft]	Jib length 26 ft
30	256.8
40	256.1
50	245.3
60	220.0
70	185.2
80	158.5
100	116.5
120	88.6
140	69.6
160	55.5
180	44.6
200	35.7
220	28.1

Load capacities in 1000 lbs – 243 ft main boom

Radius [ft]	Jib length 26 ft
35	225.5
40	224.9
50	211.6
60	192.1
80	150.3
100	113.4
120	86.1
140	67.0
160	52.8
180	41.7
200	32.5
220	25.0
245	17.2

Load capacities in 1000 lbs – 272 ft main boom

Radius [ft]	Jib length 26 ft
32.1	206.2
40	205.9
60	193.5
80	142.5
100	107.0
120	82.4
140	64.6
160	50.3
180	38.8
200	29.6
220	22.1
240	15.8
270	8.1

Load capacities in 1000 lbs – 282 ft main boom

Radius [ft]	Jib length 26 ft
35	196.4
50	194.5
60	187.7
80	139.9
100	104.8
120	80.4
140	62.8
160	49.1
180	37.7
200	28.4
220	20.9
240	14.6
280	4.7

Carbody counterweight: 116,000 lbs with 4.9 ft flat track pads

Rear counterweight:
332,700 lbs



TLT 13630772 / 306561. Above load charts are for reference only. For actual lift duty please refer to load chart in operator's cabin or manual. Otherwise we recommend you to plan your lifting job using Crane Planner 2.0.

www.liebherr.com/CranePlanner

 **Crane Planner 2.0**

Fixed jib 1916.xx

Jib lengths 46-164 ft

Jib configuration 1916.xx

Jib section	Amount of jib sections												
	1	1	1	1	1	1	1	1	1	1	1	1	1
Jib foot 23 ft	1							1					1
Jib section 10 ft		1						1					1
Jib section 20 ft			1	1				1				1	1
Jib section 40 ft					1		1	1	1	2	2	2	3
Jib head 23 ft	1	1	1	1	1	1	1	1	1	1	1	1	1
Jib length [ft]	46	56	66	76	85	95	105	115	125	135	144	154	164

Actual lengths of boom sections are metric (e.g. 3 m, 6 m). The figures shown above are approximate conversions to feet.
For main boom configuration please refer to the table on page 22.

Load capacities with fixed jib

Load capacities in 1000 lbs with 66 ft main boom

Radius [ft]	Jib length 46 ft		Jib length 66 ft		Jib length 95 ft		Jib length 135 ft		Jib length 164 ft	
	15°	30°	15°	30°	15°	30°	15°	30°	15°	30°
	45	166.4	144.3	130.2						
55	162.9	127.3	79.0	98.3	82.2					
65	151.2	114.5	108.3	88.5	74.8					
80	132.4	100.3	97.1	77.6	66.1	59.8	45.4			
90	120.0	93.2	91.1	72.0	61.5	55.2	41.8		41.4	
110	104.2	85.0	78.4	63.9	54.1	47.9	35.9	32.7	36.2	
115			76.2	62.5	52.8	46.5	34.7	31.5	35.2	31.4
130			69.8	60.0	48.7	43.1	31.5	28.9	31.7	28.6
145					45.9	40.4	28.8	26.8	29.0	26.1
160					43.8	39.1	26.6	25.0	26.4	23.9
180							24.3	23.1	24.0	21.6
200							22.6	22.7	22.0	19.9
210									21.1	19.2
225									19.6	18.8

Load capacities in 1000 lbs with 115 ft main boom

Radius [ft]	Jib length 46 ft		Jib length 66 ft		Jib length 95 ft		Jib length 135 ft		Jib length 164 ft	
	15°	30°	15°	30°	15°	30°	15°	30°	15°	30°
	40	166.7	161.2	133.5						
55	166.6	139.3	123.1	102.8	83.3					
65	166.2	129.7	115.3	95.0	77.5					
75	166.2	119.6	108.8	88.1	72.5	63.2	48.3			
90	144.2	108.5	101.3	80.2	66.5	57.9	43.8		41.4	
100	125.3	103.2	91.8	72.2	59.9	51.8	40.9	35.7	39.3	
120	97.8	93.6	87.7	68.9	56.8	49.6	36.4	32.2	35.6	31.3
135	83.0	83.6	80.6	65.0	53.2	46.3	33.7	30.1	33.2	28.9
150	71.2	71.5	73.4	61.8	50.2	43.8	31.2	28.2	30.6	26.6
175				58.3	46.0	40.5	27.9	25.2	26.8	23.5
200					44.2	39.0	24.6	22.5	23.5	20.5
220							22.4	20.6	20.7	18.6
240							20.3	19.9	18.6	16.9
270									15.9	15.5

Carbody counterweight: 116,000 lbs with 4.9 ft flat track pads

Rear counterweight:

- 265,700 lbs
- 332,700 lbs
- 310,700 lbs

TLT 13630772 / 306561. Above load charts are for reference only. For actual lift duty please refer to load chart in operator's cabin or manual. Otherwise we recommend you to plan your lifting job using Crane Planner 2.0.

Load capacities with fixed jib

Load capacities in 1000 lbs with 164 ft main boom

Radius [ft]	Jib length 46 ft		Jib length 66 ft		Jib length 95 ft		Jib length 135 ft		Jib length 164 ft	
	15°	30°	15°	30°	15°	30°	15°	30°	15°	30°
40	166.2	162.3	131.2							
55	166.2	144.8	123.8	103.8	83.2					
65	166.2	135.3	118.3	97.2	78.6					
75	160.8	128.3	113.0	91.9	74.7	63.4	48.2			
90	140.6	117.3	106.0	85.7	69.0	59.7	44.2		39.2	
120	93.9	95.3	94.9	74.7	60.6	52.4	38.4	31.9	32.4	26.5
135	79.1	80.1	81.5	70.4	57.4	49.4	35.1	28.7	29.6	24.5
150	67.4	68.2	69.7	67.3	54.3	46.9	32.3	26.3	27.3	22.8
180	50.1	50.5	52.2	52.9	49.7	43.0	26.6	22.2	23.6	20.0
200			43.5	43.9	46.0	41.0	23.7	19.9	21.3	18.5
215			38.0	38.1	40.5	40.0	21.6	18.6	20.0	17.4
245					31.4	31.5	18.3	16.3	17.6	15.7
270							16.3	15.4	16.0	14.2
310									13.4	13.0

Load capacities in 1000 lbs with 213 ft main boom

Radius [ft]	Jib length 46 ft		Jib length 66 ft		Jib length 95 ft		Jib length 135 ft		Jib length 164 ft	
	15°	30°	15°	30°	15°	30°	15°	30°	15°	30°
40	166.2									
55	166.1	148.1	120.5							
65	164.2	140.8	115.9	100.1	78.9					
80	156.6	129.6	109.9	92.8	73.9	62.4	47.1			
100	117.9	118.4	103.4	85.1	68.0	58.7	42.9	34.3	35.6	
120	90.1	91.9	93.1	78.8	63.3	54.1	38.8	31.2	31.8	25.1
150	63.4	64.7	66.0	67.7	57.6	49.2	33.4	26.6	27.2	22.1
180	46.2	47.0	48.4	49.6	51.3	45.3	28.9	22.7	23.4	19.6
200	37.6	38.2	39.8	40.7	42.4	43.2	25.5	20.7	21.6	18.1
220	30.2	30.6	32.4	33.2	35.2	36.4	23.0	18.7	19.8	17.0
245			24.6	25.0	27.4	28.3	20.2	16.9	18.1	15.6
270					20.9	21.4	17.8	15.5	16.5	14.5
300							15.8	14.4	14.9	13.5
325							12.6	12.9	13.8	12.9

Load capacities in 1000 lbs with 262 ft main boom

Radius [ft]	Jib length 46 ft		Jib length 66 ft		Jib length 95 ft		Jib length 115 ft		Jib length 135 ft	
	15°	30°	15°	30°	15°	30°	15°	30°	15°	30°
45	154.5	145.6	114.3							
55	152.0	144.7	113.4	99.8						
80	142.7	132.6	106.6	93.5	70.9	59.5	56.3			
100	108.8	112.1	102.0	86.8	66.5	55.2	50.9	40.1		28.4
115	90.0	92.8	92.5	82.8	63.5	52.4	47.2	37.7		27.1
150	59.1	60.7	61.9	64.2	55.5	46.8	40.6	33.4		23.6
180	41.4	42.7	44.2	45.9	47.5	43.1	36.2	30.1		21.3
200	32.4	33.4	35.0	36.4	38.4	40.6	33.4	28.6		19.9
230	21.7	22.4	24.0	25.2	27.3	29.0	29.1	26.2		17.7
245	17.3	17.9	19.6	20.5	22.7	24.2	24.5	25.4		16.7
270	11.1	11.4	13.2	13.8	16.2	17.2	17.9	19.4		15.6
315					6.8	7.2	8.5	9.2		11.4
330						4.5	5.8	6.3		8.5
360										

Carbody counterweight: 116,000 lbs with 4.9 ft flat track pads

Rear counterweight:

- 265,700 lbs
- 332,700 lbs
- 310,700 lbs

TLT 13630772 / 306561. Above load charts are for reference only. For actual lift duty please refer to load chart in operator's cabin or manual. Otherwise we recommend you to plan your lifting job using Crane Planner 2.0.

Fixed jib 1713.xx

Jib lengths 46-115 ft

Jib configuration 1713.xx

Jib section	Amount of jib sections							
	1	1	1	1	1	1	1	1
Jib foot 23 ft	1							
Jib section 10 ft		1						
Jib section 20 ft			1					
Jib section 40 ft					1		1	
Jib head 23 ft	1	1	1	1	1	1	1	1
Jib length [ft]	46	56	66	76	85	95	105	115

Actual lengths of boom sections are metric (e.g. 3 m, 6 m). The figures shown above are approximate conversions to feet. For main boom configuration please refer to the table on page 22.

Load capacities with fixed jib

Load capacities in 1000 lbs with 66 ft main boom

	Jib length 46 ft		Jib length 66 ft		Jib length 85 ft		Jib length 95 ft		Jib length 115 ft	
	15°	30°	15°	30°	15°	30°	15°	30°	15°	30°
25.3	132.3									
35	132.1		89.1							
50	102.9	78.8	71.7	58.0	51.2		46.1			
60	88.5	70.3	62.9	52.4	44.7	36.8	40.2		32.3	
70	76.9	64.9	56.6	47.7	39.7	33.3	35.8	29.6	28.3	
80	70.2	59.7	50.7	43.6	35.8	30.4	31.8	27.0	25.4	20.9
90	63.1	55.6	46.6	40.3	32.3	27.7	29	24.9	22.5	19
100	58	52.7	42.4	37.8	29.5	25.6	26.2	22.9	20.4	17.3
110	53.6	50.8	39.1	35.4	27	23.5	24.2	21.4	18.5	15.9
120			36.4	33.7	24.7	22	22.3	20	16.8	14.8
130			34.1	32.8	22.8	20.7	20.7	19	15.6	13.7
140					21.3	19.9	19.5	18.1	14.4	12.8
160							16.5	17.4	12.5	11.6
180									10.6	11.2

Load capacities in 1000 lbs with 115 ft main boom

	Jib length 46 ft		Jib length 66 ft		Jib length 85 ft		Jib length 95 ft		Jib length 115 ft	
	15°	30°	15°	30°	15°	30°	15°	30°	15°	30°
27	132.3									
40	132.3	93.4	86.3							
60	104.7	77.4	69.7	54.8	48.8		42.9		34.0	
70	94.4	71.8	64.0	51.0	43.9	34.6	38.8	30.3	30.5	
80	85.6	68.2	58.9	48.0	40.4	32.3	35.7	28.2	27.5	21.4
100	72.1	60.5	50.6	42.5	34.6	28.4	30.2	25.0	23.0	18.5
120	63.7	55.3	44.6	38.4	30.0	25.1	26.2	22.3	19.8	16.2
130	60.1	53.3	41.9	36.8	28.3	23.7	24.6	21.2	18.3	15.2
140	57.0	52.0	39.6	35.2	26.4	22.6	23.3	20.2	17.0	14.5
150	54.2	51.0	37.7	34.1	24.7	21.7	22.0	19.5	16.1	13.7
160			36.0	33.5	23.3	20.8	20.8	18.8	15.1	13.1
180					21.1	19.8	19.1	17.6	13.5	12.1
200							11.7	17.4	12.3	11.3
210									11.8	11.1

Carbody counterweight: 116,000 lbs with 4.9 ft flat track pads

Rear counterweight:

- 265,700 lbs
- 332,700 lbs
- 310,700 lbs

TLT 13630772 / 306561. Above load charts are for reference only. For actual lift duty please refer to load chart in operator's cabin or manual. Otherwise we recommend you to plan your lifting job using Crane Planner 2.0.

Load capacities with fixed jib

Load capacities in 1000 lbs with 164 ft main boom

	Jib length 46 ft		Jib length 66 ft		Jib length 85 ft		Jib length 95 ft		Jib length 115 ft	
	15°	30°	15°	30°	15°	30°	15°	30°	15°	30°
45	130.8	91.2	84.1		58.2					
50	128.2	87.8	80.1		55.4		48.6			
60	114.2	82.0	74.3	56.4	50.7		44.5		34.6	
70	104.7	76.6	68.6	53.3	46.9	35.5	41.3	30.9	31.7	
80	97.4	72.4	64.3	50.2	43.4	33.5	37.9	29.0	29.4	
90	90.4	69.7	60.1	48.0	40.7	31.8	35.5	27.7	27.0	19.8
100	83.9	66.7	56.9	45.4	37.9	30.3	33.1	26.1	25.2	18.1
120	73.4	60.8	50.5	41.8	33.9	27.3	29.3	23.8	21.2	15.5
140	67.3	56.8	45.9	38.6	30.2	24.9	26.2	21.8	18.3	13.4
160	61.0	53.6	41.5	36.3	27.5	23.0	23.9	19.4	15.6	11.8
180	50.5	51.1	38.4	34.5	24.7	21.5	21.1	17.7	13.7	10.4
200			35.8	33.6	22.7	20.3	18.9	16.1	11.7	9.4
220					21.1	19.6	17.1	15.0	10.2	8.4
245							15.0	14.2	8.8	7.7

Load capacities in 1000 lbs with 213 ft main boom

	Jib length 46 ft		Jib length 66 ft		Jib length 85 ft		Jib length 95 ft		Jib length 115 ft	
	15°	30°	15°	30°	15°	30°	15°	30°	15°	30°
30.5	130.3									
50	125.2	89.7	82.5		56.4		48.8			
60	119.8	84.4	76.8	57.0	52.5		45.8		35.2	
80	104.7	75.8	67.7	52.1	45.8	34.3	40.0	29.7	30.4	
100	92.3	70.2	60.9	47.8	40.8	31.3	35.4	27.1	26.4	17.6
120	82.2	65.6	55.5	44.0	36.5	28.9	31.5	24.1	23.0	15.3
140	71.3	61.0	50.3	41.2	33.3	26.5	28.7	21.4	19.4	13.5
160	57.3	57.7	46.3	38.7	30.2	24.5	25.4	19.4	17.2	11.9
180	46.6	47.6	42.9	36.8	28.0	22.6	22.8	17.5	14.8	10.7
200	38.0	38.9	39.8	34.8	25.4	21.2	20.6	16.1	13.0	9.6
220	30.6	31.2	32.7	33.3	23.2	19.6	18.4	14.9	11.5	8.7
240	24.4	24.6	26.4	27.1	21.5	18.4	16.6	13.8	10.1	7.9
260				21.3	19.6	17.7	15.2	13.2	9.0	7.3
285							13.5	13.2	7.9	6.8

Load capacities in 1000 lbs with 262 ft main boom

	Jib length 46 ft		Jib length 66 ft		Jib length 85 ft		Jib length 95 ft		Jib length 115 ft	
	15°	30°	15°	30°	15°	30°	15°	30°	15°	30°
32.2	115.2									
40	114.2		84.6							
50	112.2	89.8	81.4		55.7					
60	110.1	85.2	77.1	57.2	52.7		45.7		34.1	
80	103.5	77.9	69.7	51.1	47.3	33.5	40.7	27.4	29.2	
100	96.8	72.0	63.5	45.9	42.3	30.2	35.7	24.7	25.2	16.6
120	85.1	66.7	57.1	41.9	38.3	27.3	31.7	22.4	21.9	14.8
160	52.9	54.7	46.8	35.6	30.9	23.2	25.4	18.4	17.1	11.6
200	32.8	34.2	35.1	31.0	25.4	19.9	20.5	15.4	13.3	9.5
240	19.2	20.0	21.3	22.6	21.3	17.4	16.8	13.3	10.7	7.8
260	14.0	14.5	16.0	17.0	18.0	16.3	15.2	12.4	9.6	7.2
280	9.4	9.7	11.4	12.1	13.4	14.5	14.1	11.7	8.6	6.7
300			7.4	7.7	9.4	10.1	10.0	11.0	7.8	6.2
320					5.7	6.1	6.4	7.0	7.1	6.0

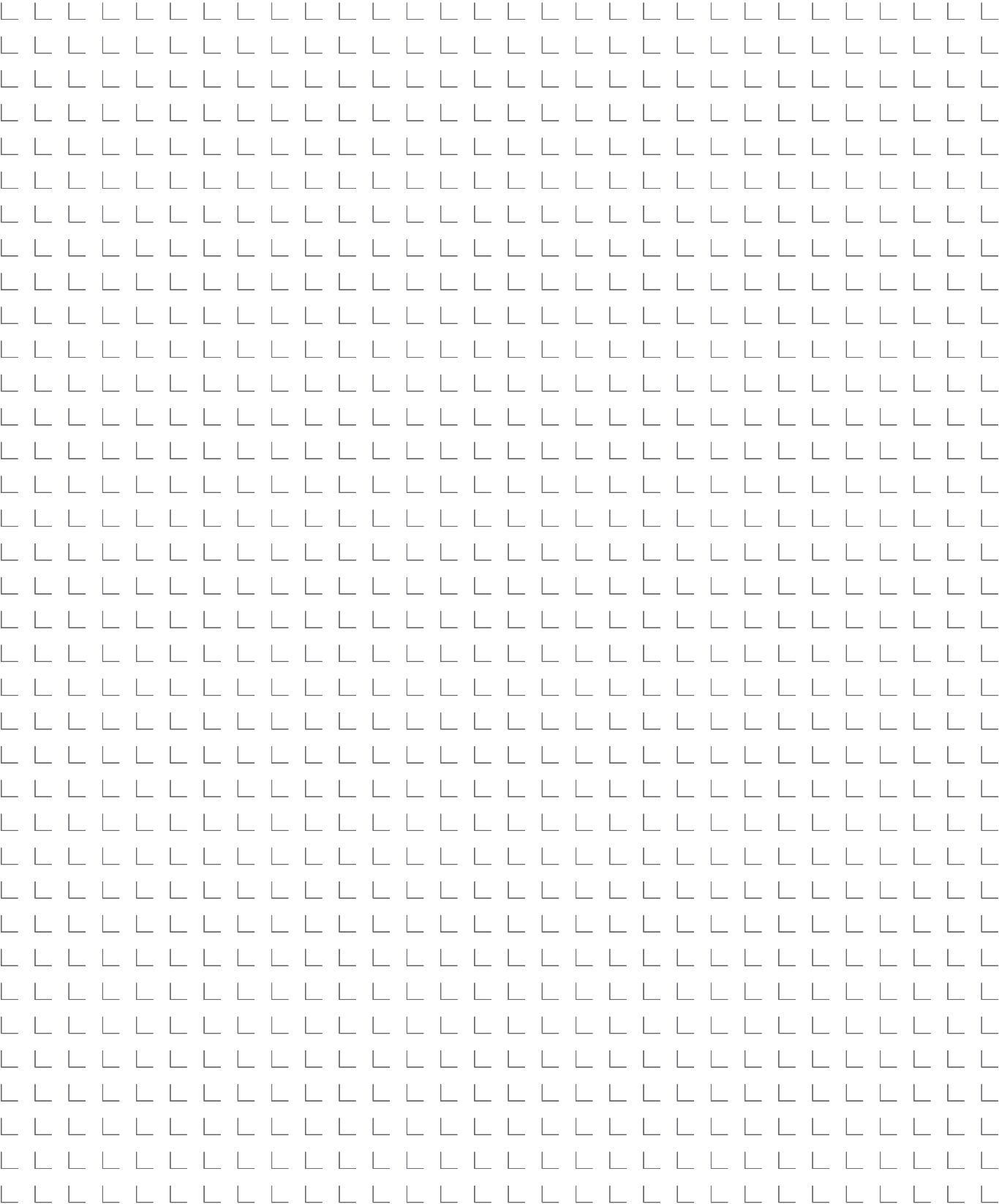
Carbody counterweight: 116,000 lbs with 4.9 ft flat track pads

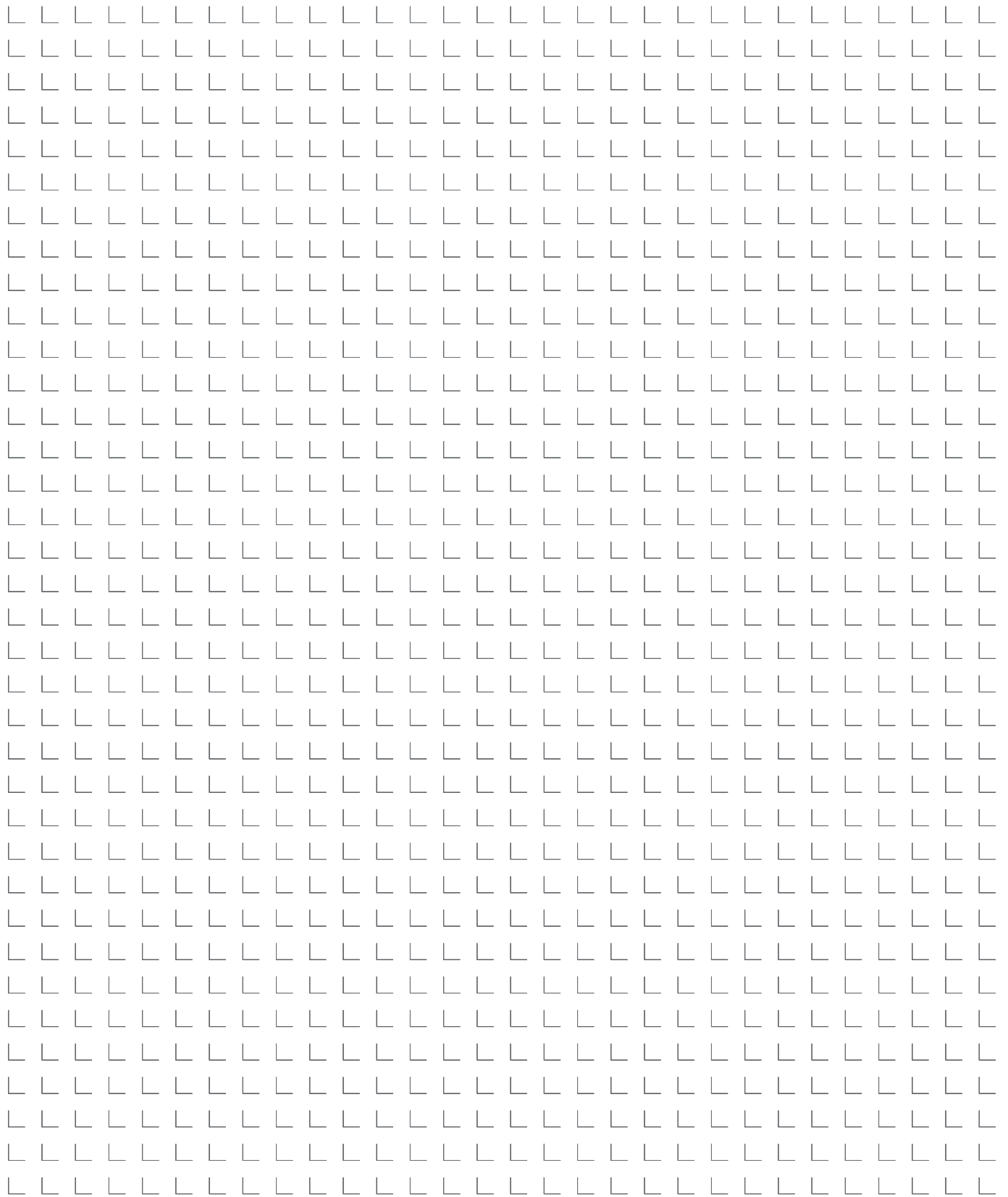
Rear counterweight:

265,700 lbs 332,700 lbs
310,700 lbs

TLT 13630772 / 306561. Above load charts are for reference only. For actual lift duty please refer to load chart in operator's cabin or manual. Otherwise we recommend you to plan your lifting job using Crane Planner 2.0.

Notes







Download datasheet



Please contact us.

Liebherr-Werk Nenzing GmbH · Dr. Hans Liebherr Str. 1 · 6710 Nenzing, Austria
Phone +43 50809 41-473 · crawler.crane@liebherr.com · www.liebherr.com
facebook.com/LiebherrConstruction

Liebherr USA, Co. · 7075 Bennington Street · Houston, TX 77028-5812
Phone (713) 636-4050 · crawler.cranes.usa@liebherr.com · www.liebherr.com
facebook.com/LiebherrConstruction