
Standard excavators for earthmoving

LIEBHERR

Crawler excavators



The range



120 to 220 kW
163 to 299 HP



0.55 to 3.00 m³



22 to 48 t

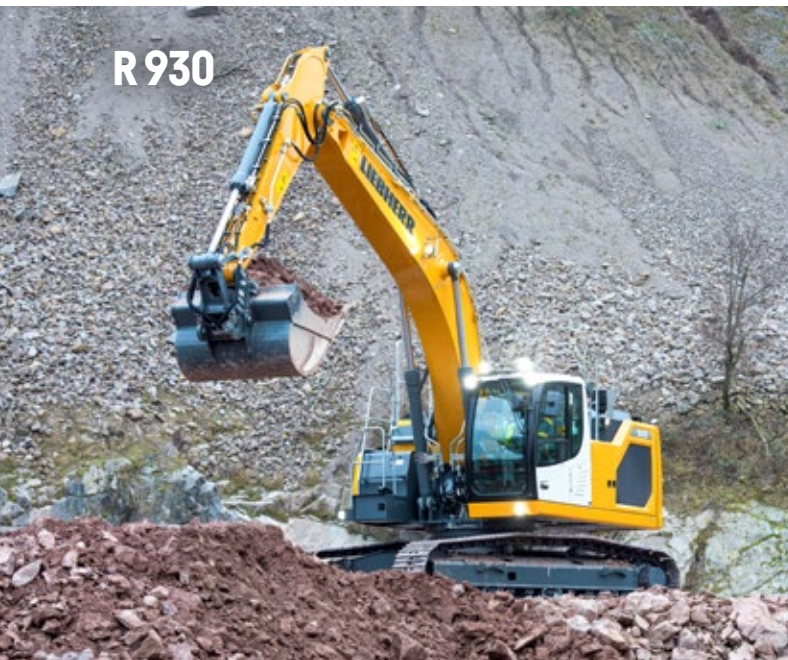
R 922



R 924



R 930



R 934



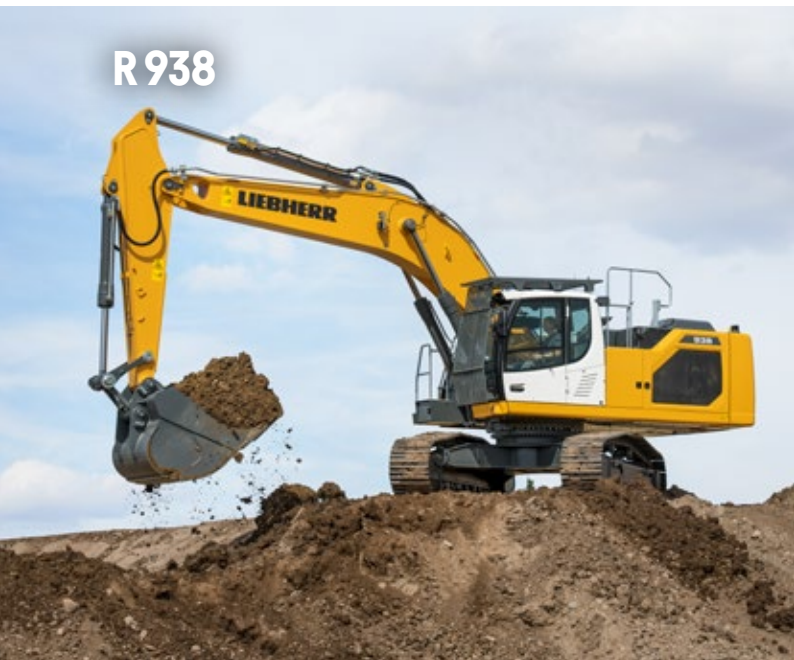
R 926



R 928



R 938



R 945



Productivity

Reliability

Safety



A yellow and white excavator is positioned on a steep, rocky hillside. The excavator's arm is partially visible on the left. The background features a dramatic sky with dark, heavy clouds and a patch of lighter clouds. The overall scene conveys a sense of ruggedness and industrial strength.

Performance

Comfort

**Easy
maintenance**

Productivity

Innovative technology

New Modetronic operating modes

- Hydraulic performance adapted to the application and the operator's driving style
- Maximum operator comfort and increased productivity
- Control of all machine movements: swing, travel, boom, stick and bucket

EFFICIENT

For balanced machine performance (default mode)

To facilitate precision work

FINE

DYNAMIC

For more dynamic machine performance

To adapt individual movements via the display according to the application or the operator's preferences

CUSTOM



Discover the **Modetronic** video



Up to 10%
reduction in
fuel consumption



Assistance systems

- Bucket Fill Assist (BFA) – Semi-automatic bucket filling
- Weighting system
- Leica machine control system
- Skyview 360° – Monitoring cameras
- Smart Travel
 - > Right translation
 - > Independent translation
 - > Translation speed control



Electronically controlled joysticks

- Optimal fine control
- Control sensitivity setting for each operator and application profile
- No more hydraulic circuits in the cab for greater safety and comfort
- Extremely precise movements

Dependability

Long-lasting performance



Designed and manufactured
in Europe



- New working attachment concept for more dependability
- Lighter and yet more durable cast components
- Optimised design for better stress distribution
- Attachments optimised for less inertia during rotation
- Increased bucket sizes and lifting capacities



Attachments

- Large number of attachment configurations available
- More robust optimised mounting system for hydraulic lines and cabling on the boom
- Reduced front slewing radius for more compactness and better safety on site



Liebherr components

- Hydraulic (pumps, motors, transmission)
- Hydraulic cylinders
- Electronic (control unit, touchscreen, camera)
- Swing ring



Undercarriage

- Various dimensions (gauge and length) available
- Different types of construction:
 - > mechanically welded (fixed gauge)
 - > bolted (variable gauge)
- Waterproof, permanently lubricated swing ring and carrier rollers
- Permanently lubricated crown wheel gearing
- Easier cleaning of side frames thanks to the optimised shape and positioning of the steps
- Robust X-shaped design

Performance

Advanced hydraulic system



**High digging and
break-out forces**



Combined movements

Optimised integrated flow summation

- Optimised system for enhanced boom, stick and bucket movement combinations
- Maximum movement speed
- Attachment movements possible during travel without loss of sensitivity
- Designed for use of hydraulic tool attachments (mill, shear etc.)

Three-pump hydraulic system

- Closed-circuit swing pump for energy recovery
- More fluid, faster combined movements
- Low fuel consumption thanks to positive control (electronic distributor control)



The R 930 – the best excavator I have ever operated

Sébastien DEREZ,
Operator at Carrières Champenoises

Safety

Operator protection



New uppercarriage access design

- Easy and completely safe side access without walking on the track
- Handrails as standard for maximum operator protection
- Wide, perfectly flat platform with anti-slip covering featuring stamped studs
- Integrated, protected front right uppercarriage headlight for maximum view
- Lockable storage box



Parts accessible from ground level

- Fuel pre-filter
- Fuel fine filter
- Bypass filter for hydraulic oil (optional)
- Engine air filter, tilted downwards for ergonomic cartridge removal without using tools
- Cab air filter housing
- Timer-operated battery main switch





Comfort
Cab



Maximum comfort and ergonomics

Working environment

Optimal operator comfort

- Spacious, modern cab, fully sound- and vibration-proofed
- Ideal working conditions and optimal view of the tool attachment
- Windscreen wiper on bottom of windscreen
- Large, high-resolution 9" colour touchscreen
- Fluid levels visible on touchscreen
- Tri-zone automatic air conditioning



Headlight packs

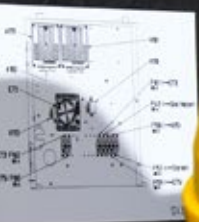
- Premium LED+ headlight packs
- LED service headlight packs for optimal view of uppercarriage access, filling zones and engine compartment
- Surround LED+ headlight pack for perfect illumination of the working area
- Timer-operated Coming/Leaving home lighting

Optional

- Cab pressurisation
- FGPS/FOPS protective grilles
- High-quality heated and ventilated anti-sweat seats (passive system)
- Four-point safety belt

Easy maintenance

Fast, safe working



24/7
Operation

729 liters*

The biggest fuel tank on the market

- Less downtime for refuelling
- Up to 24 hours of operation possible without refuelling

* model R 938



Liebherr Connect

Responsive, high-performance after-sales support

- After-sales support services that can be tailored to requirements
- A large number of plans are available to deliver the most effective and economical solution, with manufacturer's quality standards and guarantee
- Our Services team technicians have the latest diagnostic tools to ensure less machine downtime

Liebherr Connect – connecting man, machine and environment

- Liebherr Connect provides access to machine data and digital solutions and services
- Customers and partners are then equipped to deal with all fleet or asset management systems, of whatever type
- Liebherr Connect: the basis for machine networking and another milestone in digitalisation

Ergonomic access and time saved

- Levels of fluids such as motor oil and urea solution can be checked quickly and easily via the screen in the cab
- Automatic central lubrication system to minimise the time required for lubrication and ensure optimal machine operating status
- Side handrails running around the entire operator movement area
- Boxing Ring (integrated peripheral railing) available ex-works (optional)
- Coolant level visible from the cab
- Translucent slewing gear oil tank with level visible from the cab
- Swivel radiators that can be opened without tools for easier cleaning

The standard excavator range

R 922		
Engine power	kW/HP	120 / 163
Operating weight	kg	22,250–24,550
Bucket capacity	m ³	0.55–1.65

R 924		
Engine power	kW/HP	129 / 175
Operating weight	kg	23,400–26,050
Bucket capacity	m ³	0.55–1.65

R 926		
Engine power	kW/HP	150 / 204
Operating weight	kg	26,500–28,950
Bucket capacity	m ³	0.55–1.75

R 928		
Engine power	kW/HP	150 / 204
Operating weight	kg	28,950–31,500
Bucket capacity	m ³	0.55–1.85

R 930		
Engine power	kW/HP	180 / 245
Operating weight	kg	30,400–37,750
Bucket capacity	m ³	1.00–2.15

R 934		
Engine power	kW/HP	200 / 272
Operating weight	kg	34,800–38,400
Bucket capacity	m ³	1.00–2.50

R 938		
Engine power	kW/HP	220 / 299
Operating weight	kg	37,300–41,400
Bucket capacity	m ³	1.00–3.00

R 945		
Engine power	kW/HP	220 / 299
Operating weight	kg	41,400–48,250
Bucket capacity	m ³	2.00–3.00



The Liebherr Group



Global and independent: more than 70 years of success

Liebherr was founded in 1949 when, with the development of the world's first mobile tower crane, Hans Liebherr laid the foundations for a family-run company which now has more than 50,000 employees and comprises over 150 companies across every continent. The holding company of the Group is Liebherr-International AG in Bulle, Switzerland, whose shareholders are exclusively members of the Liebherr family.

Technology leadership and pioneering spirit

Liebherr is a pioneer and its forward-looking approach has seen it make important contributions to technology history over a wide variety of industries. Employees throughout the world continue to share the courage of the company founder, sharing a passion to produce innovative products and a determination to provide world-leading equipment and machinery.

Diversified product programme

Liebherr is one of the world's biggest construction machine manufacturers and provides high-quality, user-oriented products and services. Its product programme includes earthmoving machinery, material handling technology, deep foundation machines, mining, mobile and crawler cranes, tower cranes, concrete technology, maritime cranes, aerospace and transportation systems, gear technology and automation systems, refrigerators and freezers, components and hotels.

Customised solutions and maximum customer value

Liebherr solutions are characterised by precision, implementation and longevity. The company is committed to technological excellence and to providing customers with solutions that match their needs exactly. For Liebherr, customer focus does not end with delivery of a product but continues through a comprehensive range of back-up and support services.

www.liebherr.com