

EN

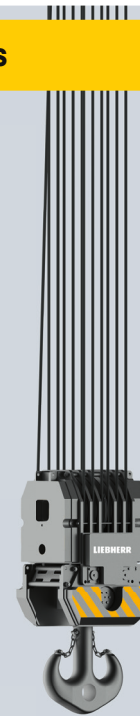
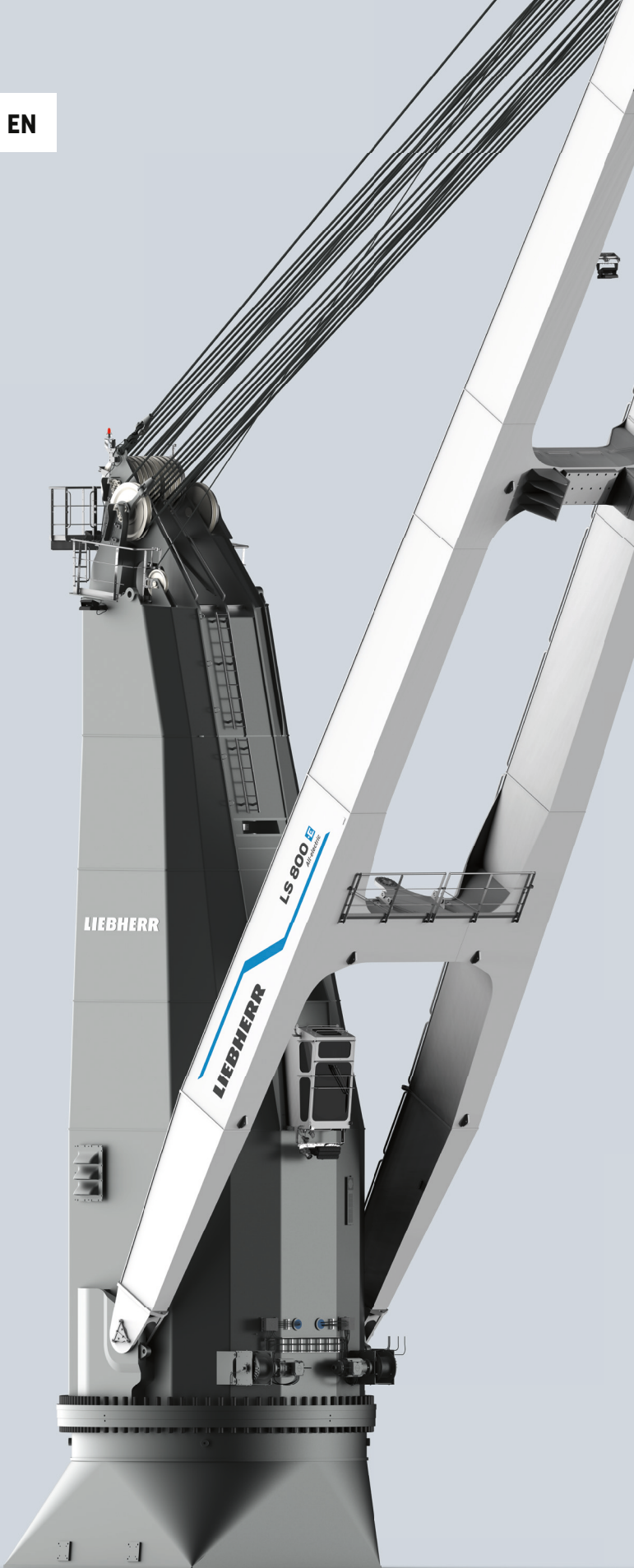
LS 800 E

All-electric
heavy lift crane

www.liebherr.com

LIEBHERR

Ship cranes



Maximum lifting capacity

Main hoist: 800 t
Auxiliary hoist: 60 t
Sling Hoist: 10 t



Maximum outreach

39 m

Technical data

Speeds

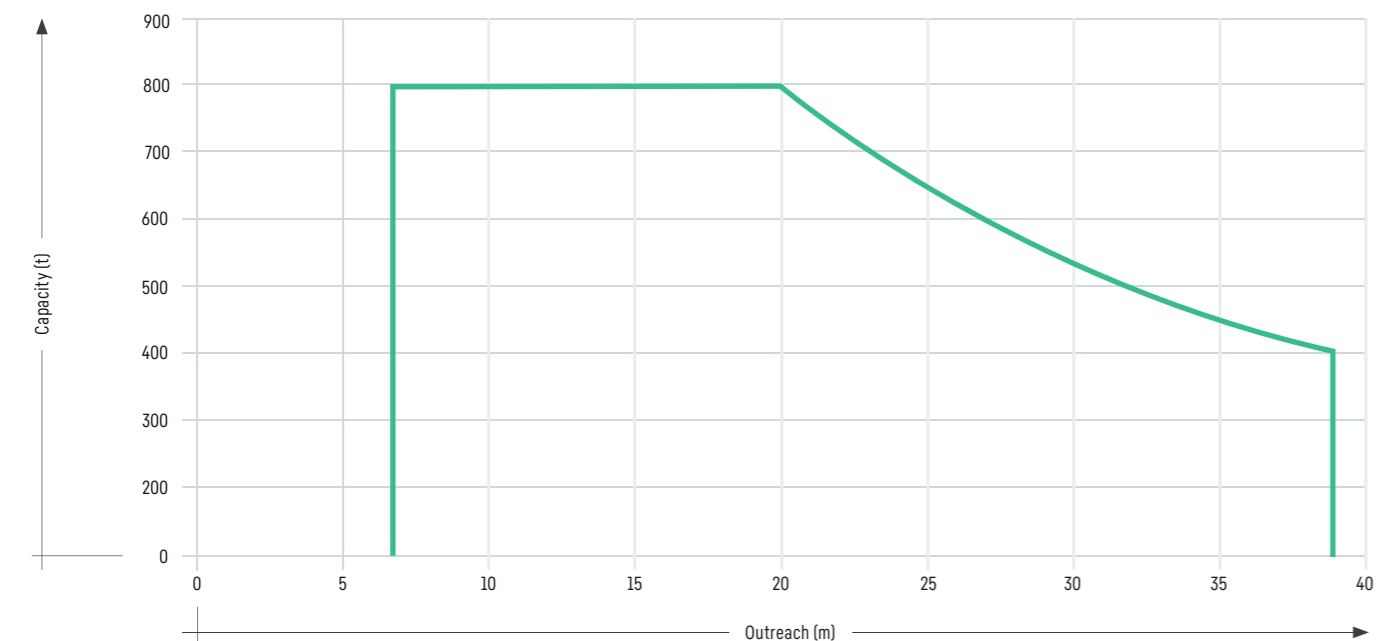
Hoisting/lowering main hoist	
800t	0 m/min - 2.3 m/min
≤ 200t	0 m/min - 7.0 m/min
Hoisting/lowering auxiliary hoist	
60t	0 m/min - 12.9 m/min
≤ 30t	0 m/min - 25.5 m/min
Sling hoist	
10t	0 m/min - 31.5 m/min
0t	0 m/min - 60 m/min
Slewing	
Reduced torque	0 rpm - 0.4 rpm
Max. torque	0 rpm - 0.2 rpm
Slewing range	360° unlimited
Luffing	
400t (from max. to min.)	approx. 408 sec
0t (from max. to min.)	approx. 305 sec

Design conditions

Maximum admissible	
Ambient working temperature	-20°C to +45°C
Humidity maximum	93%
Maximum wind speed	
Working condition	20 m/sec
Parking condition	63 m/sec

Load diagram

hook operation*



*Load chart depending on operation conditions and classification societies

Working radius

Min. to max. (main hoist)	6.80 m - 39.0 m
Min. to max. (auxiliary hoist)	6.80 m - 40.0 m
Min. to max. (sling hoist)	6.70 m - 40.30 m

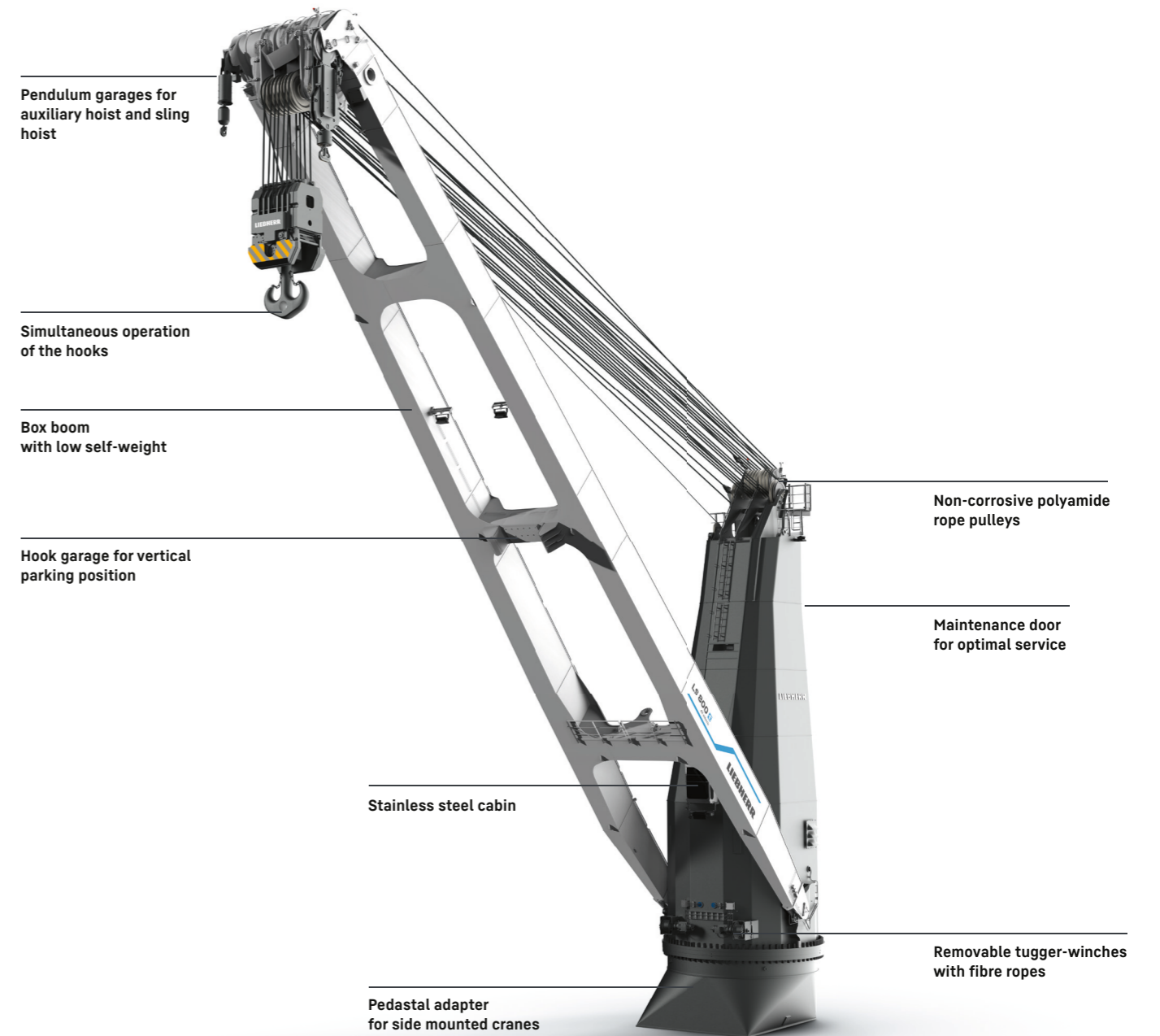
Electric data of the motor

Type of motors	three phase squirrel cage
Electric Motor Duty Cycles	S1
Electric motors	frequency controlled
Main power supply	440V, 60Hz 3ph +N
Auxiliary power supply	440V, 60Hz 3ph +N

Weight

Weight of crane (without pedestal and lifting attachments)	approx. 385t
--	--------------

General arrangement



Advantages

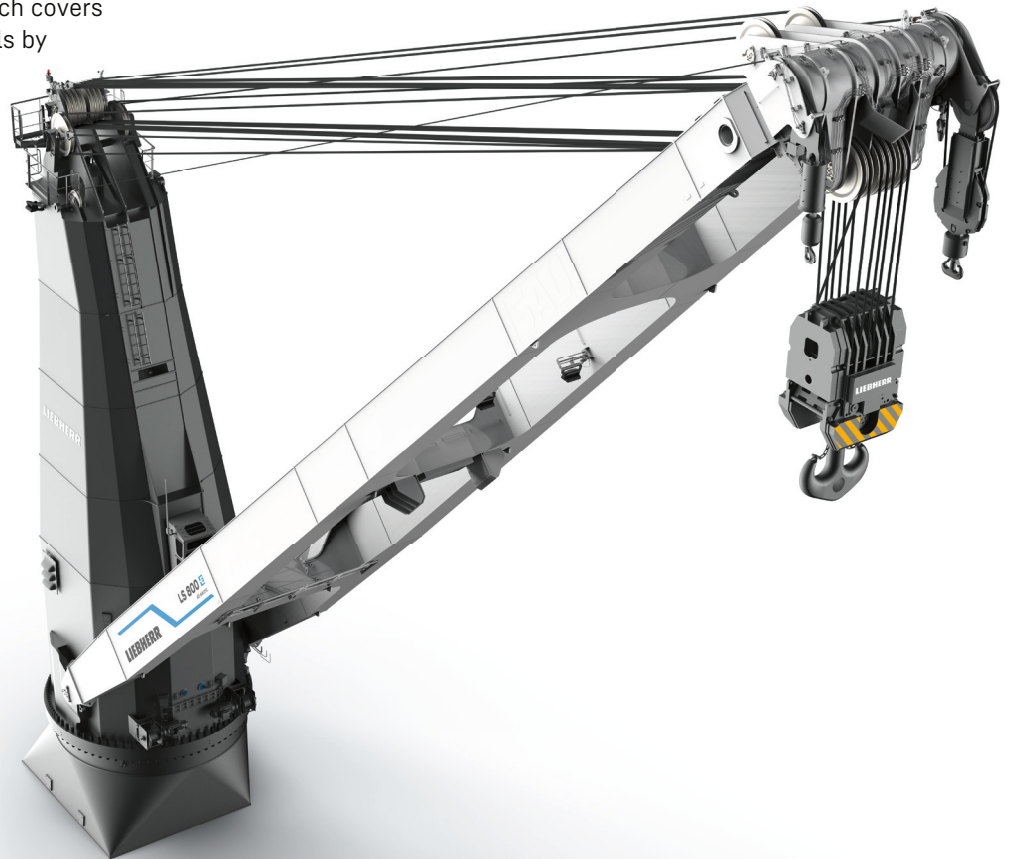
- Fully electric crane with inverter technology
- All components inside the crane column
- Precise and reliable crane control system Litronic - made by Liebherr
- Power saving through active communication between the crane and ship energy management systems
- Power electronics and switch cabinets in separate room with air conditioning
- Components developed and produced in-house
- Vertical boom rest with locking pin inside the crane column

Optional features



The new LS 800 E

- 60 t auxiliary hoist and 10 t sling hoist
- Personnel lift
- Synchronised lifting in tandem operation
- Intelligent automatic greasing systems for slewing bearing, pivot point and rope pulleys
- Remote control for main functions and tugger winches
- Additional monitor on the bridge deck of the vessel
- Radio communication system
- Liebherr remote service
- Faster opening and closing of hatch covers and handling of tween deck panels by switching the operating logic
- Pendulum garages for auxiliary hoist and sling hoist



Litronic®

The crane management system is the centrepiece for precise and reliable crane operation. The in-house developed and manufactured Litronic is a unique one-system-solution which unites state-of-the-art technologies for advanced crane control. Litronic is the one-level interface between crane and driver. Various analysis tools provide relevant information on the operation. The system empowers the driver to efficiently control the crane and to optimise cargo operation. Litronic is an integrated solution, uniting motor and safety and diagnosis systems, communication and information systems as well as machine data recording. It offers a wide range of possibilities to modularly integrate functionalities and solutions as options during the ordering process upfront or as retrofit kits later on.

LiDAT

Remote maintenance via GSM-modem and LiDAT interface enables immediate troubleshooting by the crew and Liebherr technical advisors. This allows to put back the crane into operation without a separate service visit.

XpertAssist

The XpertAssist subscription offers an extension of the common remote maintenance service, including a direct audio/video uplink to Liebherr's special trained customer service, featuring augmented reality elements for enhanced diagnosis and advanced technical advice.