

---

# Whatever way the wind blows

---

Cranes for wind power

# LIEBHERR

Mobile and crawler cranes





# Definitions of terms







Radius

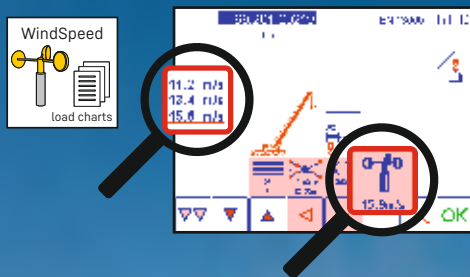
Height of hub

Hook height

## Concepts for wind power

	Size of facility	Economical transportation	Moving on the jobsite	Flexibility
LTM 	■ ■ ■ ■ □ □	■ ■ ■ ■ ■	■ ■ ■ ■ □	■ ■ ■ ■ ■
LR 	■ ■ ■ ■ ■	■ ■ □ □ □	■ ■ ■ ■ □	■ ■ ■ ■ ■
LR-W 	■ ■ ■ ■ □	■ ■ □ □ □	■ ■ ■ ■ ■	■ ■ □ □ □
LG 	■ ■ ■ ■ ■	■ ■ ■ □ □	■ ■ ■ □ □	■ ■ ■ □ □

Increased flexibility and safety by using lifting capacity tables with different maximum wind speeds.



# Concepts for wind power

## Telescopic cranes

### Telescopic mobile crane

- Driving on public roads
- Economical transportation and short erection times
- Limited space requirement for crane erection
- Driving from job site to job site with retracted telescopic boom, Y-guying system, additional equipment and partial ballast on 3 m wide roads
- Universally employable: industry, infrastructural measures, wind power



Hub height	LTM 1350-6.1	LTM 1400-7.1	LTM 1450-8.1	LTM 1500-8.1	LTM 1650-8.1	LTM 1750-9.1	LTM 11200-9.1
80 m	21.1 t	27.5 t	27.2 t	56 t	68 t	92.1 t	141 t
100 m	10.1 t	14.9 t	14.9 t	31 t	45 t	65.6 t	97 t
140 m	-	-	-	-	12.7 t	14.3 t	26.1 t
	Page 6	Page 8	Page 10	Page 12	Page 14	Page 16	Page 18

### Example:

You are looking for a mobile crane to erect a wind turbine with a hub height of 100 m. The maximum unit weight is approx. 25 t.

Hub height	LTM 1350-6.1	LTM 1400-7.1	LTM 1450-8.1	LTM 1500-8.1	LTM 1650-8.1	LTM 1750-9.1	LTM 11200-9.1
100 m	10.1 t	14.9 t	14.9 t	31 t	45 t	65.6 t	97 t
	Page 6	Page 8	Page 10	Page 12	Page 14	Page 16	Page 18



Starting from the LTM 1500-8.1 you will find the suitable solution for your project. See page 12.

## Lattice boom cranes

### Lattice boom crawler crane LR

- Highest capacity and lifting height
- Movable with complete equipment on wide tracks
- Universally employable: heavy load, industry, wind power
- Efficient for operation in wind parks as well as for single units

### Narrow track lattice boom crawler crane LR 1700-1.0W

- Movable on narrow roads
- Driving with long boom systems
- With derrick system also capable for large wind generators
- Especially efficient for jobs in wind parks

### Lattice boom mobile crane LG 1800-1.0

- Basic unit drivable on public roads
- Less transportation units than lattice boom crawler cranes
- Universally employable: heavy load, industry, wind power
- Efficient for operation in wind parks as well as for single units
- Dismantling of the crane for relocation, basic unit drives with only 3 m width



### Lattice boom cranes without derrick system

Economical installation of wind turbines up to 120 m hub height

Hub height	LR 1500	LR 1700-1.0	LR 1700-1.0W	LR 1800-1.0	LR 11000	LG 1800-1.0
80 m	118 t	170 t	170 t	185 t	253 t	185 t
100 m	88 t	151 t	145 t	172 t	253 t	174 t
	Page 20	Page 22	Page 24	Page 26	Page 28	Page 30

### Lattice boom cranes with derrick system

Maximum utilisation of load capacity

Hub height	LR 1500	LR 1700-1.0	LR 1700-1.0W	LR 1800-1.0	LR 11000	LG 1800-1.0
80 m	113 t					
100 m	90 t					
140 m	51 t	135 t	138 t	157 t	202 t	167 t
165 m	-	105 t	108 t	126 t	140 t	121 t
170 m	-	-	-	115 t	123 t	143 t
180 m	-	-	-	80 t	110 t	135 t
190 m	-	-	-	-	87 t	-
	Page 20	Page 22	Page 24	Page 26	Page 28	Page 30



# Telescopic mobile crane



350 t



70 m



455 kW  
619 HP



180 kW  
245 HP



140 t



12x6x12  
12x8x12



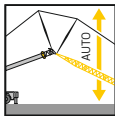
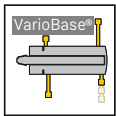
85



# LTM 1350-6.1

**A real power pack, but flexible as well!**

- 6-axle all terrain chassis
- Longest telescopic boom of its class
- Self-assembly of Y-guying system for telescopic boom
- Top capacities at the fixed jib for erection and maintenance of wind power generators
- Sensitive manoeuvring due to comfortable all-wheel steering and torque converter
- Economical transportation logistics as for maximum capacities at steep working radii only partial ballast is needed



## Telescopic boom + Y-guying system + fixed jib

Hub height	Max. capacity at radius	Hook height	System
60 m	35 t x 16 m	70 m	TYVEF
80 m	21.1 t x 18 m	88 m	TYVEF
100 m	8.2 t x 22 m	106 m	TYVEFH



## Telescopic boom + Y-guying system + luffing jib

Hub height	Max. capacity at radius	Hook height	System
60 m	31 t x 18 m	71 m	TYVEN
80 m	17.3 t x 24 m	92 m	TYVEN
100 m	10.1 t x 30 m	109 m	TYVEN



# Telescopic mobile crane



400 t



60 m



450 kW  
612 HP



240 kW  
326 HP



140 t



14x6x14  
14x8x14



85





# LTM 1400-7.1

## Manoeuvrable and flexible with seven axles.

- 7-axle all terrain chassis
- Strong boom system due to Y-guying system and spacer
- Self-assembly of Y-guying system for telescopic boom
- Sensitive manoeuvring due to comfortable all-wheel steering and torque converter
- Hydraulic adjustment of the ballast radius from 5.6 m to 6.6 m, thus reduction of ballast transportation
- Economical transportation logistics as for maximum capacities at steep working radii only partial ballast is needed

## Telescopic boom + Y-guying system + fixed jib

Hub height	Max. capacity at radius	Hook height	System
60 m	29.3 t x 16 m	70 m	TYSF
80 m	16.8 t x 16 m	87 m	TYSF
100 m	7.4 t x 22 m	107 m	TYSF



## Telescopic boom + Y-guying system + luffing jib

Hub height	Max. capacity at radius	Hook height	System
60 m	46.5 t x 16 m	68 m	TYSN
80 m	27.5 t x 22 m	88 m	TYSN
100 m	14.9 t x 30 m	108 m	TYSN



# Telescopic mobile crane



450 t



85 m



505 kW  
686 HP



134 t



16x8x16



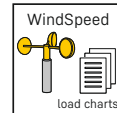
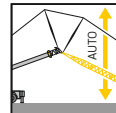
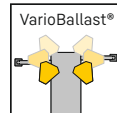
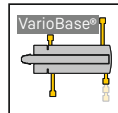
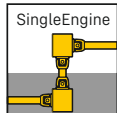
85 km/h



# LTM 1450-8.1

## The big fast-erecting crane!

- 8-axle all-terrain chassis
- Travel on public roads with 85 m telescopic booms and four support beams at 12 t axle load
- Hydraulically variable adjustment of the ballast radius from 5 m to 7 m, thus saving on ballast transport
- Sensitive manoeuvring thanks to comfortable all-wheel steering and torque converter
- Economical transport logistics, as for maximum load-bearing capacity in steep working areas only a partial ballast is required



### Telescopic boom

Hub height	Max. capacity at radius	Hook height	System
60 m	33.7 x 16 m	68 m	T



### Telescopic boom + swing-away jib

Hub height	Max. capacity at radius	Hook height	System
80 m	17.4 x 17 m	88 m	TK



### Telescopic boom + luffing jib

Hub height	Max. capacity at radius	Hook height	System
60 m	50 t x 20 m	68 m	TN
80 m	27.2 t x 24 m	89 m	TN
100 m	14.9 t x 32 m	108 m	TN
120 m	3.7 t x 36 m	130 m	TN





# Telescopic mobile crane



500 t



50 m / 84 m



500 kW  
680 HP



240 kW  
326 HP



165 t



16x8x12



85  
km/h



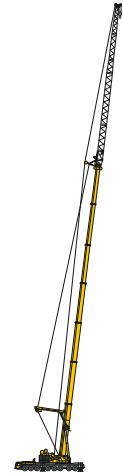
# LTM 1500-8.1

The most successful large crane of all time.

- 8-axle all terrain chassis
- Bestseller for the assembly of wind generators of the 1.5 MW class
- Multi variable boom system: 50 m and 84 m telescopic boom, fixed and luffing lattice jib
- Sensitive manoeuvring due to comfortable all-wheel steering and torque converter
- Economical transportation logistics as for maximum capacities at steep working radii only partial ballast is needed

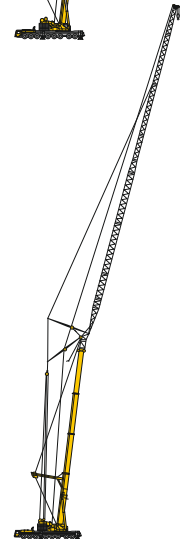
## 84 m-telescopic boom + Y-guying system + fixed jib

Hub height	Max. capacity at radius	Hook height	System
60 m	64 t x 16 m	72 m	TY3ENZF
80 m	38.5 t x 20 m	88 m	TY3ENZF
100 m	17.2 t x 24 m	109 m	TY3ENZF



## 50 m-telescopic boom + Y-guying system + luffing jib

Hub height	Max. capacity at radius	Hook height	System
60 m	78 t x 18 m	72 m	TY3SN
80 m	56 t x 24 m	90 m	TY3SN
100 m	31 t x 30 m	109 m	TY3SN
105 m	24 t x 34 m	116 m	TY3SN
120 m	16.1 t x 38 m	129 m	TY3SN





# Telescopic mobile crane



700 t



80 m



505 kW  
686 HP



175 t



16x8x16



85  
km/h

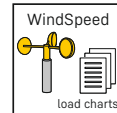
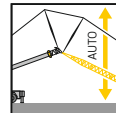
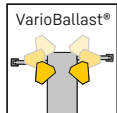
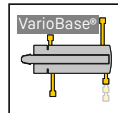
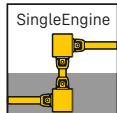




# LTM 1650-8.1

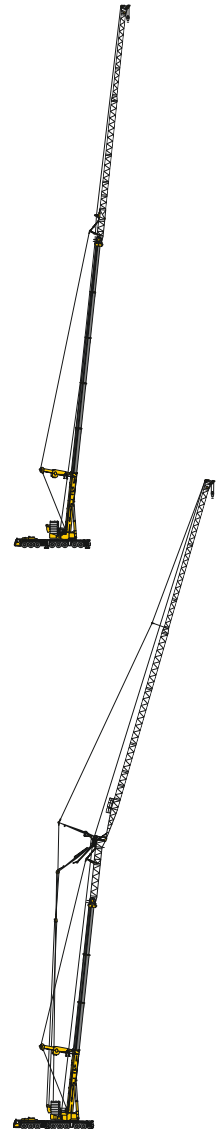
## The maximum on eight axles.

- 8-axle all-terrain chassis
- Driving on public roads with 54 m telescopic boom and the front outrigger beams at 12 t axle load
- Hydraulically variable adjustment of the ballast radius from 6.4 m to 8.4 m, thus saving on ballast transport
- Sensitive manoeuvring thanks to comfortable all-wheel steering and torque converter
- Automated raising and lowering of the luffing jib
- Economical transportation logistics



## Telescopic boom + Y-guying system + fixed jib

Hub height	Max. capacity at radius	Hook height	System
80 m	56.4 t x 16 m	89 m	T5YVENZF 15°



## Telescopic boom + Y-guying system + luffing jib

Hub height	Max. capacity at radius	Hook height	System
80 m	68 t x 21 m	87 m	T3YV2EN
90 m	56.3 t x 24 m	97 m	T3YV2EN
100 m	45 t x 28 m	107 m	T3YV2EN
110 m	34.6 t x 32 m	117 m	T3YV2EN
120 m	26.4 t x 32 m	127 m	T3YV2EN
130 m	18.7 t x 38 m	137 m	T3YV2EN
140 m	12.7 t x 42 m	147 m	T5YVEN

# Telescopic mobile crane



800 t



52 m



505 kW  
686 HP



300 kW  
408 HP



204 t



18 x 8 x 18



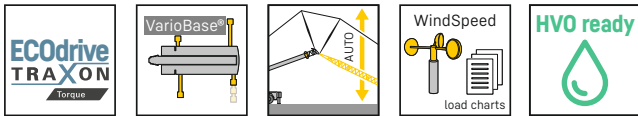
85 km/h



# LTM 1750-9.1

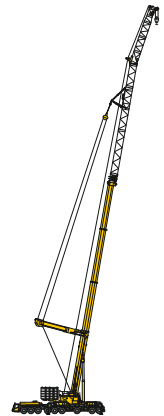
Wide range of uses with powerful boom systems.

- 9-axle all terrain chassis
- Driving on public roads with telescopic boom and 2 outrigger beams at 12 t axle load
- Most modern working equipment: fixed and luffing lattice jib, boom extension and auxiliary jib are optimized for the assembly of wind power generators
- Sensitive manoeuvring due to comfortable all-wheel steering and torque converter
- Economical transportation logistics as for maximum capacities at steep working radii only partial ballast is needed



## Telescopic boom + Y-guying system + fixed jib

Hub height	Max. capacity at radius	Hook height	System
80 m	56.5 t x 18 m	88 m	TYV23E3F 10°



## Telescopic boom + Y-guying system + luffing jib

Hub height	Max. capacity at radius	Hook height	System
80 m	92.1 t x 19 m	89 m	TYV23EN
90 m	79.8 t x 21 m	98 m	TYV23EN
100 m	65.6 t x 24 m	108 m	TYV23EN
105 m	61.2 t x 25 m	112 m	TYV23EN
110 m	46 t x 28 m	118 m	TYV2EN
120 m	33 t x 34 m	129 m	TYV2EN
130 m	22.8 t x 38 m	138 m	TYV2EN
140 m	14.3 t x 42 m	148 m	TYV2EN





# Telescopic mobile crane



1,200 t



55 m /  
100 m



505 kW  
686 HP



300 kW  
408 HP



202 t



18 x 8 x 18



80 km/h



# LTM 11200-9.1

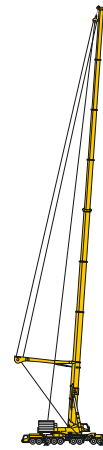
The largest Liebherr mobile crane.

- 9-axle all terrain chassis
- Strongest mobile crane worldwide
- Driving on public roads at 12 t axle load with slewing platform and 4 outrigger beams without telescopic boom
- Driving on jobsites with 100 m telescopic boom and Y-guying system plus attachments
- Sensitive manoeuvring due to comfortable all-wheel steering and torque converter
- Economical transportation logistics as for maximum capacities at steep working radii only partial ballast is needed



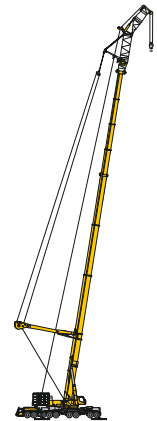
## 100 m-telescopic boom + Y-guying system

Hub height	Max. capacity at radius	Hook height	System
80 m	84 t x 16 m	92 m	T7Y



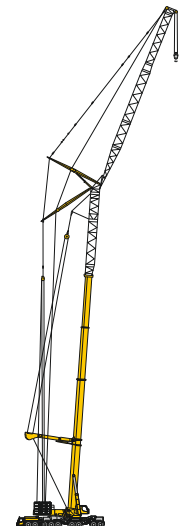
## 100 m-telescopic boom + Y-guying system + fixed jib

Hub height	Max. capacity at radius	Hook height	System
80 m	94 t x 20 m	89 m	T7YVENZF
100 m	76 t x 16 m	107 m	T7YVEV2NZF
105 m	65 t x 16 m	114 m	T7YVEV3V2NZF



## 55 m-telescopic boom + Y-guying system + luffing jib

Hub height	Max. capacity at radius	Hook height	System
80 m	141 t x 18 m	90 m	T3YVEN
100 m	97 t x 22 m	112 m	T3YV2VEN
105 m	83 t x 24 m	117 m	T3YV2VEN
120 m	58 t x 32 m	128 m	T3YV2VEN
130 m	38 t x 36 m	138 m	T3YV2VEN
140 m	26.1 t x 44 m	148 m	T3YV2VEN
150 m	15.8 t x 50 m	158 m	T3YV2VEN





# Lattice boom crawler crane



500 t



330 kW  
449 HP



190 t



55 t



max.  
280 t x 16 m



7.6 m





# LR 1500

Powerful, smart, compact.

- The latest crawler crane technology
- Improved wind power systems for tower heights of 80 m to 100 m
- Worldwide cost-effective transport
- The dimensions of a 400 t class with the lifting capacity of a 500 t crane over its entire working range



## Main boom + fixed jib

Hub height	Max. capacity at radius	Hook height	System
80 m	107 t x 16 m	94 m	SL3F
80 m	118 t x 16 m	94 m	SL8F
90 m	88 t x 18 m	103 m	SL3F
90 m	101 t x 18 m	103 m	SL8F
100 m	77 t x 18 m	112 m	SL3F
100 m	88 t x 18 m	112 m	SL8F

## Main boom + derrick system + fixed jib

Hub height	Max. capacity at radius	Hook height	System
100 m	90 t x 24 m	112 m	SL4DFB
120 m	73 t x 24 m	130 m	SL4DFB
130 m	59 t x 22 m	142 m	SL4DFB
140 m	51 t x 22 m	150 m	SL4DFB



# Lattice boom crawler crane



700 t



400 kW  
544 HP



230 t



90 t



max.  
375 t x 18 m



max.  
375 t x 21 m



max.  
375 t x 21 m



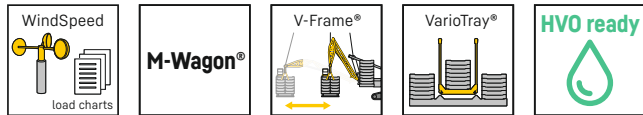
8.7 m



# LR 1700-1.0

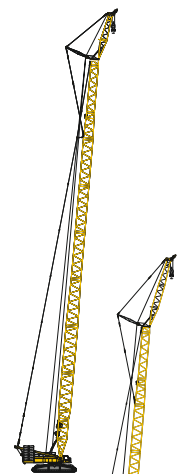
## Blending worlds, merging types

- The perfect crane for wind power
- Unbeatable lattice boom technology – dimensions from the 600 t class and lifting capacities from the 750 t class
- Latest generation of fixed jib F with 170 t lifting capacity and integral runner
- Heavy-duty crawler carrier (HD) for maximum driving performance



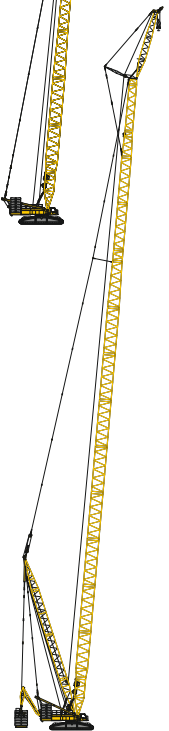
### Main boom + fixed jib

Hub height	Max. capacity at radius	Hook height	System
80 m	170 t x 16 m	93 m	HSL3AF
90 m	168 t x 16 m	102 m	HSL3AF
100 m	151 t x 17 m	110 m	HSL3AF
105 m	140 t x 18 m	113 m	HSL3AF
105 m	135 t x 18 m	116 m	HSL2AF
110 m	114 t x 18 m	119 m	HSL2AF
110 m	103 t x 19 m	122 m	HSL2AF



### Main boom + derrick system + fixed jib

Hub height	Max. capacity at radius	Hook height	System
140 m	135 t x 30 m	152 m	HSL9ADFBV
150 m	120 t x 30 m	161 m	HSL9ADFBV
160 m	109 t x 32 m	170 m	HSL9AZDFBV
165 m	105 t x 28 m	173 m	HSL9AZDFBV
166 m	99 t x 28 m	177 m	HSL9AZDFBV





# Narrow track lattice boom crawler crane



700 t



400 kW  
544 HP



170 t  
68 t



65 t



max.  
375 t x 18 m



max.  
375 t x 21 m



13.5 m x 13.5 m



3.9 m



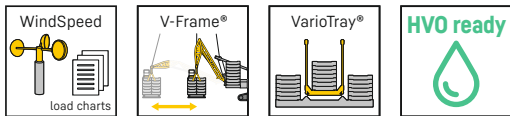
5.9 m



# LR 1700-1.0W

## Big impact on narrow track.

- Optimal driving on narrow roads, total width of the crawler chassis only 5.9 m
- High safety during driving as the support plates can be kept close to the ground and the folding beams can be adapted to the available road width
- Driving with 126 m main boom and 27 m fixed jib with derrick system, as well as with a 111 m main boom and 15 m fixed jib without derrick system
- High stability during crane operation due to crane supports
- 2 m-crawler plates, quick connection and 4-fold crawler drive standard
- Radio remote control for driving and supporting
- Heavy-duty crawler carrier (HD) for maximum driving performance

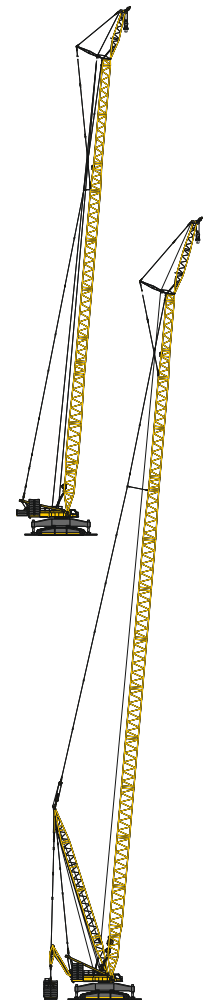


## Main boom + fixed jib

Hub height	Max. capacity at radius	Hook height	System
80 m	170 t x 16 m	95 m	HSL3AF
90 m	170 t x 16 m	104 m	HSL3AF
100 m	145 t x 18 m	112 m	HSL3AF
105 m	141 t x 18 m	115 m	HSL3AF
105 m	135 t x 18 m	118 m	HSL3AF
110 m	117 t x 18 m	121 m	HSL3AF
110 m	106 t x 19 m	124 m	HSL3AF

## Main boom + derrick boom + fixed jib

Hub height	Max. capacity at radius	Hook height	System
140 m	138 t x 30 m	154 m	HSL9ADFBV
150 m	124 t x 30 m	163 m	HSL9ADFBV
160 m	113 t x 30 m	172 m	HSL9AZDFBV
165 m	108 t x 32 m	175 m	HSL9AZDFBV





# Lattice boom crawler crane



800 t



455 kW  
619 HP



230 t  
35 t



130 t



max.  
400 t x 18 m



max.  
400 t x 24.4 m



max.  
400 t x 23 m



9.0 m

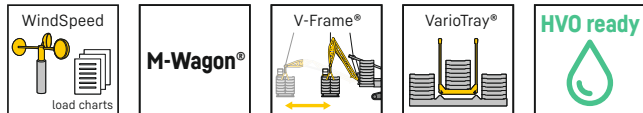




# LR 1800-1.0

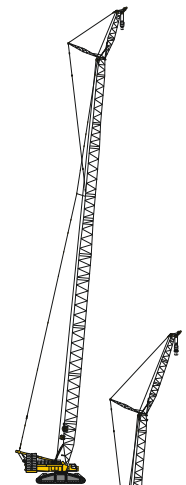
**Strong like a bull.**

- Top all-rounder
- Boom systems from a module system, which all fit together
- Simple switch to the world of industry
- Unbeatably low ground pressure using 2.4 m ground plates
- Equipment compatible with LG 1800-1.0



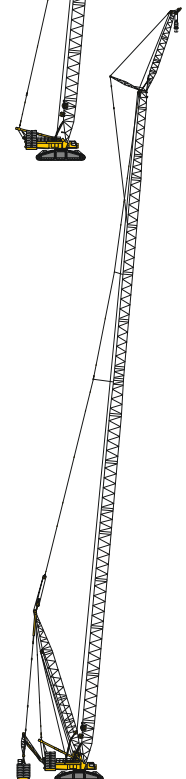
## Main boom + fixed jib

Hub height	Max. capacity at radius	Hook height	System
80 m	185 t x 18 m	95 m	HSL3AF
90 m	185 t x 17 m	101 m	HSL3AF
100 m	166 t x 19 m	113 m	HSL3AF
105 m	164 t x 18 m	119 m	HSL3AF
110 m	140 t x 20 m	122 m	HSL5AF
115 m	127 t x 20 m	125 m	HSL5AF



## Main boom + derrick system + fixed jib

Hub height	Max. capacity at radius	Hook height	System
140 m	157 t x 24 m	155 m	HSL2ADFBV
150 m	134 t x 24 m	163 m	HSL2ADFBV
160 m	114 t x 24 m	172 m	HSL2ADFBV
165 m	98 t x 26 m	177 m	HSL2ADFBV
165 m	126 t x 26 m	177 m	HSL4AZD2FBV
170 m	90 t x 26 m	184 m	HSL2ADFBV
170 m	115 t x 26 m	184 m	HSL4AZD2FBV
185 m	62 t x 26 m	198 m	HSL4AZD2FBV



# Lattice boom crawler crane



1,000 t



500 kW  
680 HP



250 t



130 t



max.  
450 t x 20 m



max.  
450 t x 30 m



max.  
450 t x 30 m



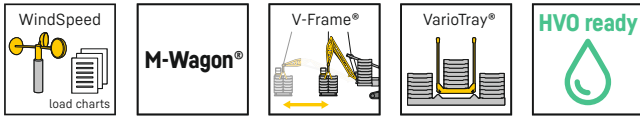
9.2 m



# LR 11000

Stays strong when things get tight.

- Excellent capacities over the complete working range
- Variable boom systems for the erection of wind power plants
- Also deployable with great flexibility in wind parks without derrick system
- Enormous capacity increases with PowerBoom
- Transportation optimized dimensions and weights
- Outstanding assembly times due to simple set-up concept



## Main boom + fixed jib

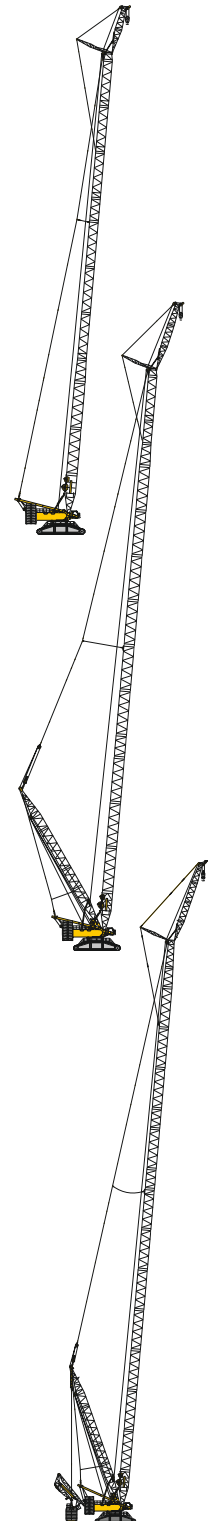
Hub height	Max. capacity at radius	Hook height	System
100 m	253 t x 17 m	114 m	SL8F2
105 m	233 t x 18 m	120 m	SL8F2
110 m	212 t x 19 m	123 m	SL8F2
115 m	193 t x 21 m	126 m	SL8F2

## Main boom + derrick system + fixed jib

Hub height	Max. capacity at radius	Hook height	System
120 m	209 t x 18 m	132 m	SL8DF2
130 m	184 t x 19 m	144 m	SL8DF2
135 m	160 t x 22 m	150 m	SL8DF2
140 m	145 t x 24 m	156 m	SL8DF2

## Main boom + derrick system + fixed jib

Hub height	Max. capacity at radius	Hook height	System
140 m	202 t x 24 m	156 m	SL10DF2BV
150 m	182 t x 24 m	156 m	SL10DF2BV
160 m	156 t x 24 m	174 m	SL10DF2BV
166 m	140 t x 24 m	180 m	SL10DF2BV
170 m	123 t x 28 m	186 m	SL10DF2BV
175 m	116 t x 28 m	189 m	SL10DF2BV
180 m	110 t x 30 m	192 m	SL10DF2BV
190 m	87 t x 32 m	202 m	SL10DF2BV





# Lattice boom mobile crane



800 t



505 kW  
686 HP



455 kW  
619 HP



270 t  
25 t



max.  
400 t x 20 m



max.  
400 t x 24,4 m



13 m x 13 m



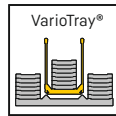
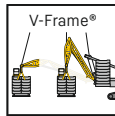
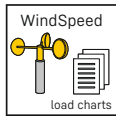
85  
km/h



# LG 1800-1.0

## The legend grows.

- Successor to the legendary LG 1750
- The master of wind power
- Combination of the strength and flexibility of an 800-tonne crawler crane with the mobility of a mobile crane
- The base unit can be driven on regular roads within 3 m width anywhere in the world thanks to flexible axle loads
- HSL5AF for 120 m turbines without derrick system, HSL4 with derrick system for hook heights of 196 m
- Equipment compatible with LR 1800-1.0
- X3 boom system for outstanding load bearing capacities

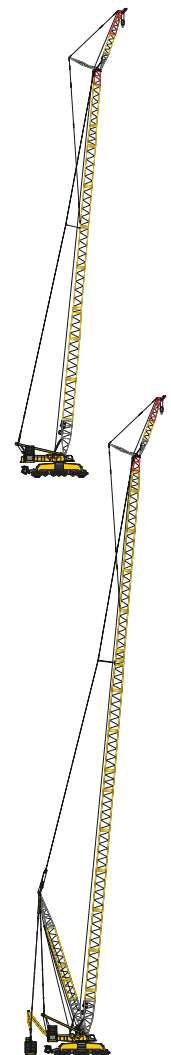


### Main boom + fixed jib

Hub height	Max. capacity at radius	Hook height	System
80 m	185 t x 20 m	97 m	HSL5AF
90 m	185 t x 20 m	103 m	HSL5AF
100 m	174 t x 18 m	115 m	HSL5AF
110 m	154 t x 18 m	124 m	HSL5AF
120 m	122 t x 22 m	132 m	HSL5AF

### Main boom + derrick system + fixed jib

Hub height	Max. capacity at radius	Hook height	System
140 m	167 t x 24 m	156 m	HSL4AZD2FBV
150 m	153 t x 24 m	165 m	HSL4AZD2FBV
160 m	134 t x 26 m	174 m	HSL4AZD2FBV
160 m	162 t x 26 m	174 m	X3AZD2FBV
170 m	111 t x 24 m	186 m	HSL4AZD2FBV
170 m	143 t x 26 m	183 m	X3AZD2FBV
185 m	63 t x 32 m	196 m	HSL4AZD2FBV
185 m	83 t x 30 m	200 m	X3AZD2FBV



# MyLiebherr

Our MyLiebherr portal is the easy way for you to access Liebherr's digital service world.  
Take advantage of extensive basic and additional services for your mobile and crawler cranes.



One portal, all services  
**MyLiebherr**



Planning

**Crane Finder**



Operations

**Performance**



Planning

**Crane Planner 2.0**



Operations

**Documents**



Maintenance

**Spare Parts Catalogue**



Planning

**LICCON Work Planner**



Training

**Digital Crane Operator**



Maintenance

**Parts Shop**

Subject to modification

Liebherr-Werk Ehingen GmbH · Postfach 1361 · 89582 Ehingen, Germany  
Phone +49 73 91 5 02-0 · www.liebherr.com

MyLiebherr



Printed in Germany (1)  
lwe-p4-01-e01-2025