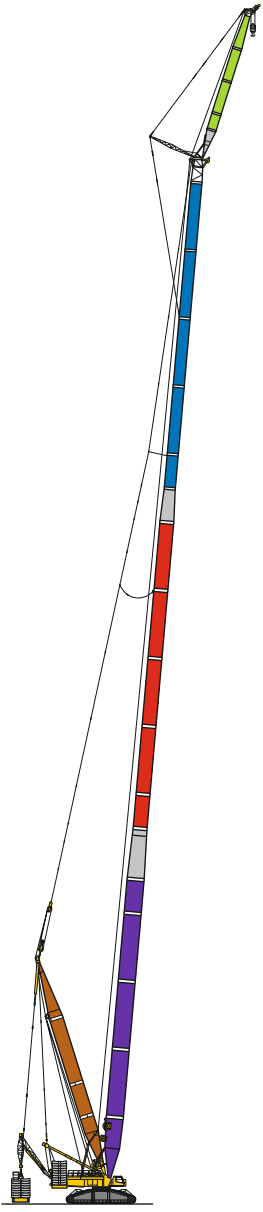


HSLDFB/HSLDFBV

LR 1800-1.0



HSLDFB
HSLDFBV

HSL 315 ft - 591 ft
F 39 ft - 128 ft
D 128 ft

LIEBHERR

HSLDFB/HSLDFBV

HSL 335 ft

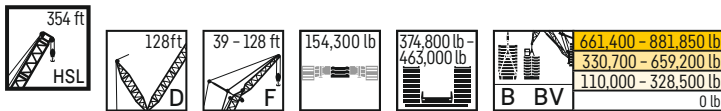


661,400 - 881,850 lb
330,700 - 659,200 lb
110,000 - 328,500 lb
0 lb

		HSL 335 ft																										
		F 39 ft			F 49 ft			F 59 ft			F 69 ft			F 79 ft			F 89 ft			F 98 ft			F 108 ft		F 118 ft		F 128 ft	
		12°	18°	30°	12°	18°	30°	12°	18°	30°	12°	18°	30°	12°	18°	30°	12°	18°	30°	12°	18°	30°	18°	30°	18°	30°	18°	30°
330	B BV		129 122	132 125	130 121	132 123	121 121	129 125	121 121	103 103	112 112	104 105	88.9 88.9	96.4 96.5	91.8 91.9	78.3 78.4	84.6 84.5	80.9 80.7	69.7 69.9	75.8 75.7	71.9 71.8	63.5 63.5	64.4 64.4	57.7 57.7	58.3 58.3	52.4 52.4	53 53.1	47.2 47.2
335	B BV				127 119	128 121	121 121	127 122	120 120	102 102	111 111	103 104	88.5 88.6	95.5 95.5	91 91.2	77.9 78	83.8 83.7	80.2 80.1	69.3 69.5	75 74.9	71.3 71.2	63 63.1	63.7 63.7	57.3 57.2	57.7 57.6	52 52	52.4 52.5	46.7 46.7
340	B BV				125 119	121 120	125 119	119 119	102 102	110 110	103 103	88.2 88.3	94.8 94.8	90.3 90.4	77.5 77.7	83 82.9	79.6 79.6	68.9 69.2	74.2 74.1	70.7 70.7	62.6 62.7	63.1 63.2	56.8 56.7	57 56.9	51.7 51.6	51.8 51.8	46.4 46.4	
345	B BV							122 118	118 119	102 102	109 109	102 102	87.9 88	94.1 94.2	89.6 89.7	77.2 77.3	82.2 82.2	79 79	68.6 68.8	73.4 73.4	70.1 70.1	62.2 62.3	62.6 62.6	56.4 56.3	56.4 56.4	51.3 51.3	51.1 51.1	46 46
350	B BV									102 102	108 109	101 101	87.7 87.8	93.4 93.5	89 89	77 77.1	81.6 81.5	78.5 78.5	68.2 68.4	72.7 72.7	69.6 69.6	61.8 61.9	62 62	56 55.9	55.9 55.8	50.9 50.9	50.5 50.5	45.6 45.6
355	B BV										108 108	100 101	87.5 87.7	92.7 92.9	88.3 88.3	76.8 76.8	80.9 80.9	78 78	68 68.1	72 72	69 69.1	61.4 61.5	61.5 61.4	55.6 55.6	55.4 55.3	50.6 50.5	50 50	45.3 45.2
360	B BV												87.4 87.6	92.1 92.2	87.7 87.7	76.6 76.7	80.3 80.3	77.5 77.5	67.8 67.8	71.4 71.4	68.5 68.6	61 61.2	61 60.9	55.2 55.2	54.9 54.7	50.2 50.2	49.5 49.5	44.9 44.9
365	B BV												91.6 91.7	87.1 87.2	76.4 76.5	79.7 79.7	77 77.1	67.5 67.6	70.8 70.8	68.1 68.1	60.8 60.9	60.5 60.4	54.9 54.9	54.4 54.2	49.9 49.9	49 49	44.7 44.7	
370	B BV														76.3 76.5	79.1 79.1	76.6 76.6	67.3 67.4	70.2 70.2	67.7 67.7	60.5 60.7	60.1 60	54.5 54.5	53.9 53.7	49.5 49.5	48.5 48.5	44.5 44.4	
375	B BV															78.7 78.7	76.1 76.1	67.1 67.3	69.7 69.7	67.3 67.3	60.3 60.4	59.6 59.6	54.3 54.3	53.5 53.3	49.2 49.2	48 48	44.2 44.2	
380	B BV																	67 67.2	69.2 69.2	67 67	60.1 60.3	59.2 59.2	54.1 54.1	53 52.9	48.9 48.9	47.5 47.5	44 44	
385	B BV																			66.7 66.8	60 60.1	58.8 58.8	53.8 53.8	52.6 52.5	48.7 48.7	47.1 47.1	43.8 43.8	
390	B BV																						58.5 58.5	53.7 53.6	52.2 52.1	48.4 48.5	46.8 46.7	43.7 43.7
395	B BV																						58.2 58.2	53.5 53.5	51.8 51.8	48.2 48.3	46.4 46.3	43.6 43.6
400	B BV																								51.5 51.5	48.1 48.1	46 46	43.5 43.5
405	B BV																									47.9 47.9	45.7 45.6	43.4 43.4
410	B BV																										45.4 45.4	43.3 43.3
415	B BV																											43.2 43.2

HSLDFB/HSLDFBV

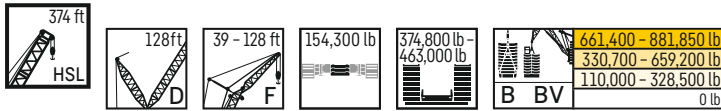
HSL 354 ft



		HSL 354 ft																																
		F 39 ft			F 49 ft			F 59 ft			F 69 ft			F 79 ft			F 89 ft			F 98 ft			F 108 ft		F 118 ft		F 128 ft							
		12°	18°	30°	12°	18°	30°	12°	18°	30°	12°	18°	30°	12°	18°	30°	12°	18°	30°	12°	18°	30°	18°	30°	18°	30°	18°	30°						
330	B BV	125 153	126 154	130 149	127 155	129 147	121 122	129 132	124 124	103 104	114 114	107 107	89.7 89.9	98.4 98.5	93.7 93.8	79.2 79.3	86.6 86.4	82.1 82.1	70.9 70.9	77.6 77.6	73.3 73.3	64.4 64.4	65.7 65.8	58.6 58.6	59.5 59.6	53.1 53.1	54.3 54.2	47.8 47.9						
335	B BV	121 149	123 150	126 148	124 151	125 146	121 121	126 131	122 123	103 103	113 113	106 106	89.3 89.4	97.5 97.7	93 93	78.7 78.9	85.8 85.6	81.4 81.4	70.4 70.4	76.8 76.7	72.6 72.6	64 63.9	65.1 65.1	58.1 58.1	58.9 59	52.7 52.7	53.6 53.6	47.4 47.4						
340	B BV	118 145	119 146	122 147	120 147	122 145	120 121	123 130	120 122	103 103	112 112	105 105	88.9 89	96.7 96.9	92.2 92.2	78.3 78.5	85 84.8	80.8 80.8	70 69.9	75.9 75.9	71.9 71.9	63.5 63.5	64.4 64.4	57.6 57.7	58.2 58.3	52.3 52.2	53 52.9	47 46.9						
345	B BV	115 141	116 143	119 144	117 144	118 144	119 121	120 130	118 121	102 102	111 111	104 104	88.4 88.6	95.9 96.1	91.5 91.5	77.9 78.1	84.2 84.1	80.3 80.3	69.5 69.5	75.1 75.1	71.3 71.3	63.1 63	63.8 63.7	57.2 57.2	57.6 57.7	51.9 51.9	52.4 52.3	46.6 46.5						
350	B BV				113 140	115 142	117 121	116 129	116 120	102 102	110 110	103 103	88.1 88.3	95 95.2	90.8 90.7	77.6 77.7	83.4 83.3	79.7 79.8	69.1 69.1	74.4 74.5	70.8 70.7	62.7 62.6	63.2 63.1	56.8 56.8	57 57	51.6 51.5	51.8 51.7	46.2 46.1						
355	B BV				110 136	112 138	114 120	113 128	114 119	102 102	110 110	102 103	87.8 88.1	94.4 94.5	90.1 90	77.2 77.4	82.7 82.6	79.2 79.2	68.7 68.8	73.7 73.8	70.3 70.2	62.3 62.3	62.6 62.5	56.3 56.4	56.4 56.4	51.2 51.1	51.2 51.2	45.9 45.8						
360	B BV							110 127	112 119	102 102	109 109	102 102	87.6 87.8	93.7 93.8	89.4 89.4	76.9 77.1	81.8 81.8	78.6 78.7	68.3 68.4	73 73.1	69.8 69.6	62 61.9	62.1 62	56 56	55.9 55.9	50.9 50.8	50.6 50.6	45.5 45.5						
365	B BV							107 126	109 118	101 101	107 108	101 101	87.3 87.6	93.1 93.1	88.7 88.8	76.7 76.9	81.2 81.2	78 78.2	68 68.1	72.3 72.5	69.3 69.1	61.6 61.5	61.6 61.5	55.6 55.6	55.4 55.4	50.6 50.4	50.1 50	45.2 45.1						
370	B BV										105 108	100 101	87.1 87.4	92.4 92.4	88 88.1	76.5 76.6	80.6 80.6	77.6 77.7	67.7 67.8	71.7 71.9	68.8 68.6	61.3 61.2	61.1 61	55.3 55.3	54.9 54.9	50.2 50.1	49.5 49.5	44.9 44.8						
375	B BV													99.4 100	87.1 87.3	91.8 91.8	87.4 87.6	76.3 76.4	80 79.9	77.2 77.3	67.5 67.6	71.1 71.2	68.3 68.2	61 60.9	60.7 60.5	54.9 54.9	54.4 54.4	49.9 49	49.1 49	44.7 44.6				
380	B BV																			91.3 91.3	86.9 87	76.1 76.3	79.4 79.4	76.8 76.8	67.3 67.4	70.5 70.6	67.9 67.9	60.7 60.7	60.2 60.1	54.6 54.6	53.9 54	49.6 49.5	48.6 48.6	44.4 44.3
385	B BV																			86.3 86.5	76.1 76.2	78.8 78.8	76.3 76.4	67 67.2	70 70	67.5 67.5	60.4 60.5	59.8 59.7	54.3 54.3	53.4 53.5	49.3 49.2	48.1 48.1	44.2 44.1	
390	B BV																			78.5 78.4	75.9 75.9	66.9 67	69.5 69.5	67.1 67.2	60.2 60.3	59.4 59.3	54.1 54.1	53 53.1	49 48.9	47.7 47.6	44 43.9			
395	B BV																			66.8 67	69 69	66.7 66.9	60 60.1	59 59	53.9 53.8	52.7 52.7	48.7 48.7	47.2 47.2	43.9 43.8					
400	B BV																			68.5 68.5	66.5 66.6	59.8 59.9	58.6 58.6	53.7 53.6	52.3 52.3	48.5 48.5	46.9 46.8	43.7 43.6						
405	B BV																						59.7 59.8	58.3 58.3	53.5 53.4	51.9 51.9	48.2 48.3	46.6 46.5	43.6 43.4					
410	B BV																						58 58.1	53.3 53.3	51.6 51.6	48 48	46.2 46.1	43.4 43.3						
415	B BV																								53.2 53.2	51.3 51.3	47.8 47.9	45.9 45.8	43.3 43.2					
420	B BV																									51 51.1	47.7 47.7	45.5 45.5	43.2 43.1					
425	B BV																										47.6 47.6	45.3 45.2	43.1 43.1					
430	B BV																												43 43					

HSLDFB/HSLDFBV

HSL 374 ft



ft		HSL 374 ft																												
		F 39 ft			F 49 ft			F 59 ft			F 69 ft			F 79 ft			F 89 ft			F 98 ft			F 108 ft		F 118 ft		F 128 ft			
		12°	18°	30°	12°	18°	30°	12°	18°	30°	12°	18°	30°	12°	18°	30°	12°	18°	30°	12°	18°	30°	18°	30°	18°	30°	18°	30°		
335	B BV	118 142	118 143	122 148	121 147	121 146	120 122	122 133	121 125	104 104	115 115	108 108	90 90.2	99.3 99.5	94.5 94.6	79.7 79.8	87.4 87.4	82.7 82.7	71.2 71.2	78.3 78.3	73.8 73.7	64.8 64.7	66.2 66.1	58.9 58.8	60 59.9	53.3 53.2	54.7 54.7	48 47.9		
340	B BV	115 138	115 139	119 144	117 143	117 144	119 122	119 132	119 124	103 104	114 114	107 107	89.6 89.8	98.4 98.6	93.7 93.8	79.1 79.3	86.6 86.5	82.1 82	70.7 70.7	77.5 77.5	73.1 73.1	64.3 64.3	65.5 65.4	58.4 58.4	59.4 59.3	52.8 52.8	54 54.1	47.5 47.5		
345	B BV	111 134	112 135	115 140	114 139	114 141	116 121	115 131	116 123	103 103	112 113	106 106	89.2 89.4	97.6 97.8	93 93.1	78.7 78.8	85.8 85.5	81.5 81.3	70.2 70.3	76.7 76.6	72.5 72.4	63.9 63.8	64.9 64.8	58 57.9	58.7 58.6	52.4 52.4	53.4 53.4	47.1 47.1		
350	B BV	108 130	108 130	112 136	111 135	111 137	113 121	112 130	114 122	103 103	111 112	105 105	88.9 89	96.9 97.1	92.3 92.4	78.3 78.4	85 84.8	80.7 80.6	69.8 69.8	75.9 75.8	71.9 71.8	63.4 63.4	64.3 64.2	57.5 57.5	58.1 58.1	52 52	52.8 52.8	46.7 46.7		
355	B BV	105 126	105 127	108 132	107 131	108 134	110 121	109 129	111 121	102 102	110 111	104 104	88.4 88.6	96.1 96.3	91.6 91.6	77.9 78.1	84.3 84.1	80.1 80.1	69.3 69.4	75.1 75.1	71.2 71.2	63 63	63.7 63.6	57.1 57.1	57.5 57.5	51.6 51.6	52.2 52.2	46.3 46.3		
360	B BV	102 124	102 124	105 129	104 128	104 130	107 120	106 127	108 121	101 102	108 111	103 104	88.1 88.3	95.4 95.5	90.9 90.9	77.6 77.7	83.5 83.4	79.6 79.5	69 69.1	74.4 74.4	70.7 70.7	62.6 62.5	63.1 63	56.7 56.7	56.9 56.9	51.3 51.3	51.6 51.6	46 46		
365	B BV				101 124	101 127	103 120	103 126	105 120	101 102	105 110	101 103	87.8 88	94.6 94.7	90.2 90.3	77.2 77.4	82.7 82.7	79 79	68.6 68.7	73.7 73.8	70.2 70.2	62.2 62.2	62.5 62.5	56.2 56.3	56.4 56.3	51 51	51.1 51	45.6 45.6		
370	B BV				98.3 121	98.5 124	100 119	99.6 124	101 119	100 102	102 109	99.6 102	87.6 87.8	94 94.1	89.6 89.6	76.9 77	82.1 82	78.5 78.5	68.3 68.4	73.1 73.2	69.7 69.7	61.9 61.8	62 62	55.8 55.9	55.8 55.8	50.7 50.7	50.5 50.5	45.3 45.3		
375	B BV							96.7 121	98.5 118	98.5 101	99.1 108	97.8 102	87.4 87.5	93.3 93.5	89 89	76.6 76.8	81.2 81.3	78 78	67.9 68.1	72.4 72.6	69.2 69.3	61.6 61.5	61.5 61.6	55.5 55.6	55.3 55.3	50.4 50.3	50 49.9	45.1 45		
380	B BV							94 118	95.7 116	96.2 101	96.3 108	95.9 101	87.2 87.3	92.7 92.9	88.3 88.4	76.4 76.6	80.7 80.8	77.5 77.5	67.6 67.7	71.8 71.9	68.8 68.8	61.3 61.2	61 61.1	55.2 55.2	54.8 54.8	50 50	49.5 49.4	44.8 44.7		
385	B BV													93.5 107	93.8 100	86.8 87.1	91.9 92.2	87.8 87.8	76.2 76.4	80.1 80.2	77.2 77.2	67.4 67.5	71.2 71.3	68.3 68.4	61 60.9	60.6 60.7	54.9 54.9	54.4 49.7	49 48.9	44.5 44.4
390	B BV													90.8 106	91.2 99.8	86.4 87.1	90.8 91.6	87 87.3	76 76.2	79.6 79.6	76.8 76.8	67.2 67.3	70.6 70.7	67.9 67.9	60.7 60.6	60.1 60.3	54.6 54.6	53.9 49.4	48.6 48.5	44.3 44.2
395	B BV													89 91.1	86 86.7	75.9 76	79 79	76.4 76.4	67 67.1	70.1 70.2	67.6 67.5	60.4 60.4	59.6 59.8	54.3 54.3	53.5 49.2	49.2 48.1	48.1 44	44.1 44		
400	B BV													86.6 90.6	84.6 86.3	75.8 76	78.6 78.5	76 76	66.8 66.9	69.6 69.7	67.2 67.1	60.2 60.2	59.3 59.5	54.1 54	53 53	48.9 48.9	47.7 47.6	43.9 43.8		
405	B BV																			78.1 78.1	75.7 75.7	66.7 66.8	69.1 69.2	66.7 66.7	59.9 60	59 59.1	53.9 53.8	52.6 48.6	47.2 47.2	43.7 43.6
410	B BV																			75.3 75.3	66.6 66.7	68.6 68.8	66.4 66.4	59.7 59.8	58.6 58.7	53.6 53.6	52.3 48.4	46.8 46.8	43.5 43.5	
415	B BV																			68.2 68.3	66.1 66.2	59.6 59.7	58.3 58.3	53.4 53.4	51.9 48.2	46.5 46.5	43.3 43.3			
420	B BV																				65.9 66	59.5 59.6	58 58	53.3 53.2	51.6 51.7	48 48	46.1 46.1	43.2 43.2		
425	B BV																						57.7 57.8	53.1 53	51.3 51.4	47.8 47.8	45.8 45.8	43.1 43.1		
430	B BV																							53 53	51 51.1	47.6 47.6	45.5 45.5	43 43.1		
435	B BV																									50.8 50.9	47.5 47.5	45.2 45.2	42.9 43	
440	B BV																										47.4 47.4	44.9 44.9	42.8 42.9	
445	B BV																											44.7 44.8	42.8 42.9	
450	B BV																												42.7 42.8	

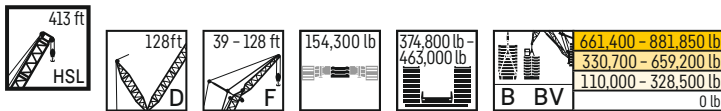


Weight capacity table: 661,400 - 881,850 lb, 330,700 - 659,200 lb, 110,000 - 328,500 lb

Main data table with columns for height (ft), load (B, BV), and various configurations (F 39 ft to F 128 ft) with sub-columns for angles (12°, 18°, 30°).

HSLDFB/HSLDFBV

HSL 413 ft



		HSL 413 ft																													
		F 39 ft			F 49 ft			F 59 ft			F 69 ft			F 79 ft			F 89 ft			F 98 ft			F 108 ft		F 118 ft		F 128 ft				
		12°	18°	30°	12°	18°	30°	12°	18°	30°	12°	18°	30°	12°	18°	30°	12°	18°	30°	12°	18°	30°	12°	18°	30°	18°	30°	18°	30°	18°	30°
360	B BV	100 126	100 126	103 129	101 127	102 128	104 122	102 127	105 123	101 103	104 114	104 107	89.5 89.6	98.3 98.2	93.4 93.5	78.9 79	86.1 86.1	81.4 81.5	70.4 70.4	76.9 77.1	72.5 72.5	63.9 64	64.8 64.9	57.8 57.8	58.6 58.6	52.1 52.1	53.3 53.4	46.9 46.8			
365	B BV	97.2 123	97.5 123	99.8 125	98.1 124	98.6 124	101 121	99.4 124	102 122	99.4 103	102 113	102 106	89 89.2	97.1 97.4	92.8 92.9	78.4 78.6	85.4 85.3	80.8 80.9	70.1 70	76.2 76.3	72 72	63.5 63.6	64.2 64.3	57.4 57.4	58 58.1	51.8 51.7	52.7 52.8	46.5 46.4			
370	B BV	94.3 119	94.6 120	96.9 122	95.1 120	95.5 121	98.1 121	96.5 121	98.9 120	97.4 102	99 112	99.6 105	88.6 88.8	95.5 96.7	91.8 92.3	78 78.2	84.6 84.5	80.3 80.3	69.7 69.6	75.5 75.6	71.4 71.4	63.1 63.2	63.7 63.8	57 57	57.4 57.5	51.4 51.3	52.1 52.2	46.1 46			
375	B BV	91.5 116	91.8 117	94 119	92.4 117	92.7 118	95.1 119	93.6 118	96 119	95.4 102	96.1 111	96.7 105	88.3 88.5	93.8 95.9	90.7 91.6	77.7 77.8	84 83.9	79.7 79.7	69.3 69.2	74.8 74.9	70.9 70.8	62.7 62.8	63.2 63.3	56.6 56.6	56.9 57	51 51	51.6 51.6	45.7 45.7			
380	B BV	88.7 113	88.9 113	91.1 116	89.6 114	90 115	92.3 116	90.8 115	93 117	93.4 102	93.4 111	93.9 104	88 88.1	91.9 95.2	89.6 91	77.4 77.5	83.3 83.2	79.2 79.2	68.9 68.8	74.1 74.2	70.3 70.3	62.4 62.4	62.7 62.8	56.3 56.3	56.5 56.5	50.7 50.7	51 51.1	45.4 45.3			
385	B BV	86 110	86.3 110	88.3 113	87 111	87.3 112	89.5 113	88.2 112	90.3 115	91.1 101	90.6 110	91.1 103	87.6 87.8	90 94.6	88.4 90.4	77.1 77.2	82.7 82.6	78.8 78.7	68.6 68.5	73.5 73.6	69.8 69.8	62 62	62.2 62.3	55.9 56	56 56	50.4 50.4	50.6 50.6	45 45			
390	B BV	83.4 107	83.6 107	85.5 109	84.3 108	84.6 108	86.6 110	85.6 110	87.6 112	88.4 101	87.9 108	88.3 103	87.2 87.5	88.1 93.9	87.2 89.8	76.8 76.9	82.1 82	78.3 78.3	68.2 68.2	72.9 72.9	69.3 69.3	61.6 61.6	61.6 61.7	55.6 55.6	55.5 55.6	50.1 50.1	50.1 50.1	44.8 44.8			
395	B BV	81 104	81.2 105	83 107	81.7 105	82 106	83.9 108	82.9 107	85 109	85.7 101	85.4 106	85.8 102	85.8 87.2	86.1 93.3	85.9 89.2	76.4 76.7	81.5 81.5	77.9 77.8	67.9 67.9	72.3 72.3	68.9 68.9	61.3 61.3	61.2 61.3	55.2 55.3	55 55.1	49.8 49.8	49.6 49.6	44.5 44.5			
400	B BV				79.3 103	79.5 103	81.2 105	80.4 104	82.3 106	83.1 101	82.9 104	83.3 101	83.5 87	83.9 92.7	84.4 88.6	76.1 76.4	80.9 80.7	77.5 77.4	67.6 67.6	71.8 71.8	68.5 68.5	61 61	60.8 60.9	54.9 54.9	54.4 54.6	49.6 49.6	49.1 49.1	44.3 44.3			
405	B BV				77 99.9	77.1 100	78.8 102	77.9 101	79.8 103	80.5 100	80.4 102	80.8 100	81.2 86.9	81.5 92.2	82 88.1	75.6 76.1	80.1 80.1	77 76.9	67.3 67.4	71.2 71.2	68.1 68	60.8 60.8	60.4 60.4	54.7 54.7	54 54.1	49.3 49.3	48.6 48.6	44.1 44			
410	B BV							75.6 98.4	77.4 100	77.9 99	77.9 100	78.3 99.1	78.8 86.7	79.1 91.7	79.6 87.6	74.9 76	78.2 79.6	76.1 76.5	67 67.1	70.6 70.6	67.6 67.6	60.5 60.5	60 60	54.4 54.4	53.6 53.7	49 49	48.2 48.2	43.9 43.8			
415	B BV							73.3 95.8	75 97.6	75.5 96.8	75.5 97.9	75.9 97.7	76.5 86.6	76.7 91.1	77.2 87.1	74.3 75.8	76.2 79.1	74.6 76.2	66.8 66.9	70.1 70.1	67.2 67.2	60.3 60.3	59.6 59.6	54.2 54.2	53.2 53.3	48.8 48.8	47.8 47.8	43.7 43.6			
420	B BV										73.3 95.5	73.6 95.8	74.2 86.5	74.4 90.4	74.9 86.6	73.7 75.6	74.3 78.6	73.3 75.9	66.6 66.7	69.6 69.6	66.9 66.9	60 60	59.2 59.2	53.9 53.9	52.8 52.9	48.5 48.6	47.4 47.4	43.5 43.4			
425	B BV										71.3 93.3	71.9 86.4	72.1 89.6	72.6 86.1	72.5 75.5	72.3 78.2	71.9 75.6	66.5 66.6	69.1 69.2	66.6 66.6	59.8 59.8	58.7 58.8	53.7 53.7	52.5 52.5	48.3 48.3	47 47	43.3 43.3				
430	B BV													69.9 88.3	70.3 85.6	71 75.4	70.4 77.7	70.3 75.3	66.3 66.4	68.6 68.8	66.3 66.3	59.7 59.6	58.4 58.5	53.5 53.5	52.1 52.1	48.1 48.1	46.7 46.6	43.2 43.2			
435	B BV														68.1 85.2	68.8 75.4	68.3 77.3	68.7 75	65.7 66.3	68 68.3	66 66	59.5 59.4	58.1 58.2	53.3 53.3	51.7 51.8	47.8 47.8	46.3 46.3	43 43			
440	B BV																66.3 77	66.7 74.7	64.9 66.2	67.1 67.9	65.3 65.8	59.4 59.3	57.8 57.9	53.1 53.1	51.4 51.5	47.7 47.6	45.9 45.9	42.9 42.9			
445	B BV																			63.5 66.2	65.6 67.6	64.6 65.5	59.2 59.2	57.6 57.6	53 52.9	51.2 51.2	47.5 47.5	45.6 45.6	42.7 42.8		
450	B BV																			63.6 67.3	63 65.4	59 59.1	57.2 57.3	52.8 52.7	50.9 50.9	47.4 47.4	45.3 45.3	42.6 42.7			
455	B BV																				58.8 59.1	56.9 57.1	52.7 52.6	50.6 50.6	47.3 47.2	45.1 45.1	42.6 42.6				
460	B BV																						56.4 56.9	52.6 52.5	50.3 50.3	47.1 47.1	44.8 44.8	42.5 42.6			
465	B BV																							52.5 52.5	50.1 50.2	47 47	44.5 44.5	42.4 42.5			
470	B BV																								50 50	46.9 46.9	44.3 44.3	42.3 42.4			
475	B BV																									46.9 46.9	44.1 44.2	42.3 42.4			
480	B BV																											42.3 42.3			

HSLDFB/HSLDFBV

HSL 512 ft

512 ft HSL
128ft D
39 - 128 ft F
154,300 lb
374,800 lb - 463,000 lb
661,400 - 881,850 lb
330,700 - 659,200 lb
110,000 - 328,500 lb
B BV

Table with columns for span length (75-235 ft) and angles (120, 180, 300 degrees) for various HSLDFB/HSLDFBV models. The table lists wind speed limits in mph for different configurations.

HSLDFB/HSLDFBV

HSL 532 ft

532 ft
HSL

128ft
D

39 - 128 ft
F

154,300 lb

374,800 lb - 463,000 lb

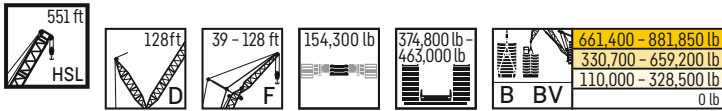
B BV

661,400 - 881,850 lb
330,700 - 659,200 lb
110,000 - 328,500 lb
0 lb

ft	HSL 532 ft																																				
	F 39 ft			F 49 ft			F 59 ft			F 69 ft			F 79 ft			F 89 ft			F 98 ft			F 108 ft		F 118 ft		F 128 ft											
	12°	18°	30°	12°	18°	30°	12°	18°	30°	12°	18°	30°	12°	18°	30°	12°	18°	30°	12°	18°	30°	12°	18°	30°	18°	30°	18°	30°	18°	30°							
80	155																																				
85	153	149		140																																	
90	152	147	137	139	133			128					118																								
95	150	145	135	137	132	117	126	120					116																								
100	148	143	133	136	130	119	125	118					115	108																							
105	146	141	132	134	128	117	123	117	105				114	107																							
110	144	139	130	131	126	116	121	116	104	112	106		112	106																							
115	142	137	128	129	124	115	119	114	103	110	104		110	104																							
120	139	135	126	127	122	113	118	112	102	109	103		109	103																							
125	137	132	124	125	120	112	116	110	101	107	101		107	101																							
130	135	130	122	123	118	110	114	109	99.6	105	99.7		105	99.7																							
135	133	128	121	121	116	108	112	107	98.2	103	98.1		103	98.1																							
140	132	126	119	119	114	107	110	105	96.8	102	96.6		102	96.6																							
145	128	124	117	117	113	105	108	103	95.4	99.9	95		98.2	93.8																							
150	126	122	115	115	111	104	106	102	93.9	98.2	93.4		92.8	87.7																							
155	123	120	113	113	109	102	104	100	92.5	96.4	91.8		92.5	87.9																							
160	121	118	111	111	107	100	102	98.3	91.1	94.7	90.3		91.1	86.8																							
165	119	116	109	109	105	98.6	100	96.5	89.7	92.9	88.7		89.7	85.4																							
170	117	113	108	107	103	97	98.5	94.8	88.2	91.2	87.2		88.2	84.0																							
175	115	111	106	105	101	95.4	96.6	93.1	86.8	89.5	85.6		86.8	82.6																							
180	112	109	104	103	99.4	93.8	94.8	91.4	85.4	87.8	84.1		85.4	81.3																							
185	110	107	102	101	97.6	92.3	93.8	90.4	84.1	86.2	82.5		84.1	80.1																							
190	108	105	101	101	97.9	92.4	93.2	89.8	84.2	86.3	82.6		84.2	80.2																							
195	106	103	98.8	97.3	94.2	89.2	89.6	86.6	81.3	83.9	79.5		81.3	77.3																							
200	104	101	97.1	95.3	92.5	87.7	87.9	85	79.9	81.5	78.1		79.9	75.8																							
205	102	99.6	95.4	93.6	90.8	86.2	86.2	83.4	78.5	79.7	76.6		78.5	74.4																							
210	100	97.8	93.7	91.8	89.2	84.6	84.6	81.9	77.1	78.1	75.1		77.1	73.0																							
215	98.6	96.1	92.2	90.2	87.6	83.2	83	80.4	75.7	76.6	73.5		75.7	71.6																							
220	96.9	94.5	90.6	88.6	86.1	81.8	81.5	78.9	74.4	75.1	72.2		74.4	70.3																							
225	95.1	92.9	89.2	87	84.6	80.5	80	77.6	73.1	73.7	70.8		73.1	69.1																							
230	93.3	91.2	87.7	85.4	83.1	79.2	78.7	76.2	71.8	72.3	69.5		71.8	67.8																							
235	91.8	89.6	86.3	83.8	81.6	78	77.3	74.9	70.6	71	68.2		70.6	66.6																							
240	90.4	88.3	84.9	82.4	80.1	76.8	75.9	73.6	69.5	69.7	67		69.5	65.6																							
245	88.9	86.9	83.6	81.1	78.8	75.5	74.6	72.2	68.4	68.3	65.8		68.3	64.5																							

HSLDFB/HSLDFBV

HSL 551 ft



ft	HSL 551 ft																												
	F 39 ft			F 49 ft			F 59 ft			F 69 ft			F 79 ft			F 89 ft			F 98 ft			F 108 ft		F 118 ft		F 128 ft			
	12°	18°	30°	12°	18°	30°	12°	18°	30°	12°	18°	30°	12°	18°	30°	12°	18°	30°	12°	18°	30°	12°	18°	30°	18°	30°	18°	30°	18°
435	B	BV	45.3	44.8	44.5	41.2	40.9	40.6	38	37.6	37.3	34.9	34.4	33.9	32.2	31.7	31	29.4	28.8	28	27.4	26.8	26	24.4	23.5	22.4	21.4	20.4	19.2
440	B	BV	44.9	44.4	44.1	40.8	40.5	40.2	37.6	37.3	36.9	34.5	34.1	33.6	31.9	31.4	30.8	29.1	28.5	27.8	27.1	26.5	25.7	24.1	23.3	22.1	21.1	20.1	19
445	B	BV	44.5	44	43.8	40.5	40.1	39.9	37.2	36.9	36.6	34.1	33.8	33.3	31.6	31.1	30.6	28.8	28.2	27.5	26.8	26.2	25.5	23.8	23	21.8	20.9	19.8	18.8
450	B	BV	44.1	43.7	43.5	40.1	39.8	39.6	36.9	36.6	36.3	33.7	33.4	33	31.3	30.8	30.3	28.5	28	27.4	26.6	26	25.2	23.5	22.8	21.5	20.7	19.5	18.6
455	B	BV	43.7	43.3	43.2	39.8	39.5	39.3	36.6	36.3	36	33.4	33.1	32.7	30.9	30.5	30.1	28.2	27.7	27.2	26.3	25.7	25	23.3	22.6	21.3	20.5	19.3	18.4
460	B	BV	43.3	42.9	42.8	39.4	39.2	39	36.3	36	35.8	33.1	32.8	32.5	30.6	30.2	29.8	27.9	27.5	27	26	25.5	24.9	23.1	22.3	21	20.3	19	18.2
465	B	BV	42.9	42.6	42.5	39.1	38.8	38.8	36	35.7	35.5	32.8	32.5	32.2	30.3	29.9	29.6	27.7	27.2	26.8	25.8	25.3	24.7	22.9	22.2	20.9	20.1	18.8	18
470	B	BV	42.6	42.2	42.2	38.8	38.5	38.5	35.7	35.4	35.2	32.6	32.3	32	30	29.7	29.4	27.4	26.9	26.5	25.5	25.1	24.5	22.7	22	20.7	19.9	18.6	17.8
475	B	BV	42.3	42	42	38.4	38.2	38.2	35.4	35.1	35	32.3	32	31.8	29.8	29.4	29.2	27.2	26.7	26.3	25.3	24.8	24.3	22.4	21.8	20.5	19.7	18.4	17.6
480	B	BV	42	41.8	41.8	38.2	38	37.9	35.1	34.8	34.7	32	31.7	31.6	29.5	29.2	29	26.9	26.5	26.2	25.1	24.6	24.2	22.2	21.7	20.3	19.6	18.2	17.5
485	B	BV	41.7	41.5	41.6	38	37.7	37.8	34.8	34.6	34.5	31.7	31.5	31.4	29.2	28.9	28.8	26.7	26.3	26	24.9	24.4	24	22	21.5	20.1	19.4	18	17.3
490	B	BV	41.4	41.3	41.3	37.7	37.5	37.6	34.6	34.3	34.3	31.5	31.2	31.2	29	28.7	28.6	26.4	26.1	25.8	24.6	24.2	23.9	21.8	21.4	19.9	19.3	17.8	17.2
495	B	BV	40.9	40.9	41	37.5	37.3	37.4	34.4	34.1	34.1	31.2	31	31	28.7	28.5	28.4	26.2	25.9	25.6	24.4	24.1	23.7	21.7	21.2	19.7	19.1	17.6	17.1
500	B	BV	40.4	40.3	40.5	37.2	37	37.2	34.2	33.9	34	31	30.7	30.7	28.5	28.2	28.2	26	25.7	25.5	24.2	23.9	23.6	21.5	21.1	19.5	19	17.5	16.9
505	B	BV	39.6	39.7	39.9	36.8	36.7	36.9	33.9	33.7	33.8	30.8	30.6	30.6	28.3	28	28	25.7	25.5	25.3	24	23.7	23.4	21.4	20.9	19.4	18.9	17.3	16.8
510	B	BV	38.6	38.7	38.9	36.5	36.4	36.6	33.7	33.5	33.6	30.6	30.4	30.5	28.1	27.8	27.8	25.5	25.2	25.1	23.8	23.5	23.3	21.2	20.8	19.2	18.7	17.1	16.6
515	B	BV				36	35.9	36.2	33.5	33.3	33.5	30.4	30.2	30.3	27.9	27.6	27.7	25.3	25.1	24.9	23.7	23.4	23.2	21.1	20.7	19.1	18.6	17	16.5
520	B	BV				35.4	35.3	35.6	33.2	33.1	33.3	30.2	30	30.2	27.7	27.5	27.5	25.2	24.9	24.8	23.5	23.2	23	20.9	20.6	19	18.5	16.8	16.4
525	B	BV							33	32.9	33.1	30	29.9	30	27.6	27.3	27.4	25	24.8	24.7	23.3	23	22.9	20.8	20.4	18.8	18.4	16.7	16.3
530	B	BV							32.8	32.6	32.8	29.9	29.7	29.9	27.4	27.2	27.3	24.8	24.6	24.6	23.2	22.9	22.8	20.6	20.3	18.7	18.3	16.6	16.1
535	B	BV										29.8	29.6	29.8	27.2	27.1	27.2	24.7	24.5	24.5	23	22.8	22.7	20.5	20.2	18.6	18.2	16.4	16
540	B	BV										29.7	29.5	29.8	27.1	26.9	27.1	24.5	24.3	24.4	22.9	22.6	22.6	20.3	20.1	18.4	18.1	16.3	15.9
545	B	BV													27	26.9	27.1	24.4	24.2	24.3	22.7	22.5	22.5	20.2	20	18.3	17.9	16.1	15.8
550	B	BV													26.9	26.8	27.1	24.3	24.1	24.2	22.6	22.4	22.4	20	19.9	18.2	17.9	16	15.7
555	B	BV															24.2	24	24.2	22.4	22.3	22.3	19.9	19.8	18	17.8	15.9	15.6	
560	B	BV																24	24.2	22.3	22.2	22.3	19.8	19.7	17.9	17.7	15.8	15.5	
565	B	BV																		22.3	22.1	22.2	19.7	19.7	17.8	17.6	15.7	15.4	
570	B	BV																			22.1	22.2	19.6	19.6	17.7	17.5	15.6	15.4	
575	B	BV																					19.5	19.5	17.5	17.5	15.5	15.3	
580	B	BV																						19.5	17.5	17.4	15.4	15.2	
585	B	BV																							17.4	17.4	15.3	15.2	
590	B	BV																								17.4	15.2	15.1	
595	B	BV																									15.1	15.1	
600	B	BV																											15.1

HSLDFB/HSLDFBV

HSL 571 ft



661,400 - 881,850 lb
330,700 - 659,200 lb
110,000 - 328,500 lb
0 lb

ft	HSL	HSL 571 ft																							
		F 39 ft			F 49 ft			F 59 ft			F 69 ft			F 79 ft			F 89 ft			F 98 ft			F 108 ft		
		12°	18°	30°	12°	18°	30°	12°	18°	30°	12°	18°	30°	12°	18°	30°	12°	18°	30°	12°	18°	30°	18°	30°	
85	B BV	117																							
90	B BV	116	112		105			96.5																	
95	B BV	115	111	104	104	99.9		95.5				87.6													
100	B BV	114	110	103	103	99	90.9	94.6	90			86.8	82		80.4			74.5			70				
105	B BV	113	109	102	102	98.1	90	93.6	89.2	77.4		85.9	81.3		79.6	74.7		73.7			69.3				
110	B BV	112	108	101	102	97.3	89.1	92.9	88.3	79.8		85.1	80.5		78.7	74.1		73	68.1		68.6	63.6		56.2	
115	B BV	111	107	99.7	101	96.3	88.2	92.3	87.5	79.1		84.2	79.7	71	77.9	73.4		72.2	67.5		67.9	63		58.6	
120	B BV	109	106	99	99.3	95.3	87.4	91.3	87	78.3		83.9	78.8	70.3	77.4	72.6	63.7	71.4	66.8	57.8	67.2	62.5		58	
125	B BV	108	104	97.7	98.1	94.2	87.1	90	86	77.5		82.8	78.4	69.6	77	71.8	63.1	70.8	66.1	57.3	66.8	61.8	53	57.4	
130	B BV	106	103	96.5	96.9	93.1	86	88.9	84.7	77.3		81.6	77.5	68.9	75.8	71.3	62.4	70.1	65.5	56.7	66.4	61.1	52.4	56.8	48.1
135	B BV	104	101	95.4	95.4	91.8	84.7	87.8	83.6	76.5		80.6	76.1	68.7	74.6	70.4	61.8	69.1	64.9	56.1	65.5	60.7	51.9	56.3	47.6
140	B BV	102	99.6	94.1	93.9	90.5	83.9	86.4	82.5	75.2		79.5	75.1	68.2	73.7	69.1	61.6	68.2	63.9	55.5	64.2	60.1	51.3	55.9	47
145	B BV	101	97.9	92.8	92.3	89	82.9	85	81.4	74.4		78.2	74.2	66.9	72.6	68.2	61.3	67.3	62.7	55.3	63.5	58.9	50.8	55	46.5
150	B BV	98.9	96.2	91.4	90.7	87.6	82	83.6	80.2	73.6		77	73.2	66.1	71.5	67.4	60.1	66.3	61.9	55.1	62.5	58	50.6	53.9	46.1
155	B BV	97.2	94.6	90	89.1	86.1	80.8	82.1	78.8	72.9		75.6	72.2	65.4	70.3	66.5	59.2	65.3	61.2	53.9	61.6	57.2	50.5	53.1	45.9
160	B BV	95.5	92.9	88.5	87.5	84.7	79.5	80.7	77.5	71.9		74.3	70.9	64.7	69	65.5	58.6	64.1	60.4	53.1	60.5	56.5	49.1	52.4	45.5
165	B BV	93.8	91.3	87	85.9	83.2	78.3	79.2	76.2	70.8		73	69.7	64	67.8	64.4	58.1	62.8	59.4	52.6	59.3	55.7	48.5	51.7	44.5
170	B BV	92.1	89.6	85.5	84.4	81.8	77.1	77.8	74.9	69.7		71.7	68.5	63	66.5	63.2	57.4	61.7	58.3	52	58.2	54.7	48	50.8	44
175	B BV	90.4	88	84.1	82.9	80.4	75.8	76.4	73.6	68.6		70.3	67.3	62.1	65.3	62.1	56.6	60.5	57.2	51.4	57.1	53.7	47.4	49.9	43.6
180	B BV	88.7	86.5	82.6	81.3	78.9	74.6	75	72.3	67.5		69	66.1	61.1	64	60.9	55.8	59.3	56.2	50.7	55.9	52.7	46.8	48.9	43.2
185	B BV	87	84.8	81.2	79.8	77.5	73.3	73.6	71	66.4		67.7	64.9	60.1	62.8	59.8	54.8	58.2	55.1	49.9	54.8	51.7	46.2	48	42.7
190	B BV	85.3	83.2	79.8	78.2	76	72	72.2	69.7	65.3		66.5	63.7	59.1	61.6	58.8	53.9	57	54.1	49.1	53.7	50.7	45.5	47	42.2
195	B BV	83.7	81.6	78.4	76.7	74.6	70.8	70.8	68.4	64.2		65.2	62.5	58.1	60.4	57.7	53	55.9	53	48.2	52.6	49.7	44.8	46.1	41.6
200	B BV	82	80.1	77	75.2	73.1	69.5	69.4	67.1	63.1		63.8	61.3	57.1	59.2	56.6	52	54.7	52	47.3	51.5	48.7	44.1	45.1	41
205	B BV	80.4	78.5	75.5	73.7	71.7	68.2	68	65.8	62		62.5	60.2	56.1	58	55.5	51.1	53.6	51	46.5	50.5	47.7	43.5	44.3	40.4
210	B BV	78.8	76.9	74.1	72.2	70.2	66.9	66.6	64.4	60.9		61.2	59	55.1	56.8	54.4	50.2	52.5	49.9	45.7	49.4	46.8	42.8	43.6	39.8
215	B BV	77.3	75.5	72.6	70.8	68.8	65.6	65.2	63.1	59.8		59.9	57.7	54.1	55.6	53.3	49.3	51.3	48.9	44.8	48.3	45.8	42.2	42.8	39.2
220	B BV	75.8	74.1	71.3	69.4	67.5	64.4	63.8	61.8	58.6		58.6	56.5	53.1	54.4	52.1	48.4	50.2	47.9	44.1	47.3	44.9	41.5	42.1	38.6
225	B BV	74.3	72.7	70	68	66.2	63.1	62.5	60.6	57.4		57.4	55.3	52	53.1	51	47.5	49.1	47	43.4	46.4	44.1	40.9	41.3	38
230	B BV	72.9	71.3	68.7	66.7	64.9	62	61.2	59.4	56.3		56.2	54.2	51	52	49.9	46.6	47.9	46	42.7	45.4	43.3	40.3	40.6	37.4
235	B BV	71.5	70	67.5	65.4	63.6	60.8	60	58.2	55.2		55	53.1	50	50.9	48.9	45.8	46.9	45.1	42	44.4	42.5	39.6	39.8	36.8
240	B BV	70.1	68.7	66.3	64.1	62.4	59.7	58.8	57	54.2		53.9	52	49	49.8	47.9	44.9	45.9	44.2	41.4	43.5	41.7	38.9	39.1	36.2
245	B BV	68.7	67.3	65.1	62.9	61.2	58.6	57.7	55.9	53.2		52.7	50.9	48.1	48.7	47	44.1	45	43.3	40.7	42.6	41	38.3	38.3	35.6
250	B BV	67.4	66	63.9	61.6	60	57.6	56.5	54.9	52.2		51.7	49.9	47.2	47.7	46.1	43.3	44.2	42.5	40	41.8	40.3	37.7	37.6	35

HSLDFB/HSLDFBV

HSL 571 ft

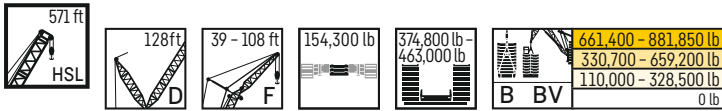


661,400 - 881,850 lb
330,700 - 659,200 lb
110,000 - 328,500 lb
0 lb

ft	HSL 571 ft																								
	F 39 ft			F 49 ft			F 59 ft			F 69 ft			F 79 ft			F 89 ft			F 98 ft			F 108 ft			
	12°	18°	30°	12°	18°	30°	12°	18°	30°	12°	18°	30°	12°	18°	30°	12°	18°	30°	12°	18°	30°	12°	18°	30°	
255	B	BV	66.2	64.9	62.7	60.4	58.8	56.5	55.3	53.8	51.2	50.6	48.9	46.3	46.8	45.2	42.6	43.4	41.8	39.3	41.1	39.5	37	36.9	34.4
260	B	BV	65	63.7	61.7	59.3	57.8	55.4	54.2	52.7	50.3	49.5	47.9	45.5	45.8	44.4	41.9	42.6	41	38.7	40.3	38.8	36.4	36.3	33.8
265	B	BV	63.8	62.6	60.7	58.3	56.8	54.5	53.3	51.7	49.3	48.5	46.9	44.7	44.8	43.5	41.3	41.7	40.3	38.1	39.6	38.2	35.8	35.6	33.2
270	B	BV	62.7	61.5	59.6	57.2	55.8	53.6	52.3	50.8	48.4	47.6	46	43.9	43.9	42.7	40.6	40.9	39.6	37.4	38.9	37.5	35.2	35	32.6
275	B	BV	61.6	60.4	58.6	56.1	54.8	52.7	51.3	49.9	47.6	46.8	45.3	43.1	43.2	41.9	40	40.2	38.9	36.8	38.1	36.8	34.7	34.4	32.1
280	B	BV	60.5	59.3	57.7	55.1	53.9	51.8	50.4	48.9	46.8	45.9	44.6	42.5	42.6	41.3	39.3	39.5	38.2	36.3	37.5	36.2	34.1	33.7	31.5
285	B	BV	59.4	58.3	56.7	54.1	52.9	50.9	49.5	48.1	46	45.1	43.8	41.9	41.9	40.6	38.7	38.9	37.6	35.7	36.9	35.5	33.6	33.1	31
290	B	BV	58.4	57.3	55.8	53.1	52	50.1	48.6	47.3	45.3	44.3	43.1	41.3	41.2	40	38.2	38.3	37.1	35.1	36.3	35	33	32.5	30.5
295	B	BV	57.4	56.3	54.9	52.2	51	49.3	47.7	46.5	44.6	43.6	42.5	40.7	40.6	39.4	37.7	37.6	36.5	34.6	35.6	34.4	32.5	32	30
300	B	BV	56.4	55.3	54	51.2	50.1	48.5	46.9	45.7	44	42.9	41.8	40.2	40	38.8	37.1	37.1	35.9	34.1	35.1	33.9	32	31.5	29.5
305	B	BV	55.4	54.3	53.1	50.3	49.3	47.7	46.1	45	43.4	42.2	41.2	39.6	39.3	38.3	36.6	36.5	35.3	33.6	34.5	33.3	31.5	30.9	29
310	B	BV	54.4	53.4	52.2	49.4	48.4	47	45.3	44.3	42.8	41.6	40.6	39.1	38.7	37.7	36.1	35.9	34.8	33.1	34	32.8	31.1	30.4	28.6
315	B	BV	53.5	52.5	51.3	48.5	47.5	46.3	44.5	43.6	42.2	41	40	38.6	38.1	37.1	35.6	35.3	34.2	32.7	33.4	32.3	30.6	29.9	28.2
320	B	BV	52.6	51.6	50.6	47.7	46.7	45.5	43.8	42.9	41.7	40.3	39.4	38.1	37.5	36.6	35.1	34.8	33.7	32.2	32.8	31.8	30.2	29.5	27.8
325	B	BV	51.7	50.8	49.8	46.8	46	44.9	43.2	42.3	41.1	39.7	38.8	37.5	37	36	34.6	34.2	33.2	31.7	32.3	31.3	29.8	29	27.3
330	B	BV	50.8	50	49	46	45.2	44.2	42.6	41.8	40.6	39.2	38.3	37	36.4	35.5	34.2	33.7	32.7	31.3	31.8	30.8	29.3	28.5	26.9
335	B	BV	50	49.2	48.2	45.3	44.5	43.6	42	41.2	40.1	38.6	37.8	36.5	35.9	35	33.7	33.1	32.2	30.9	31.3	30.3	28.9	28	26.5
340	B	BV	49.1	48.4	47.5	44.6	43.9	43	41.4	40.6	39.6	38.1	37.3	36.1	35.4	34.5	33.2	32.6	31.7	30.4	30.8	29.9	28.5	27.6	26.1
345	B	BV	48.3	47.6	46.8	44	43.3	42.5	40.8	40.1	39.1	37.5	36.7	35.7	34.9	34	32.8	32.1	31.2	30	30.3	29.4	28.1	27.1	25.7
350	B	BV	47.5	46.8	46.1	43.3	42.7	41.9	40.3	39.6	38.6	37	36.3	35.2	34.3	33.5	32.4	31.7	30.8	29.6	29.9	29	27.7	26.7	25.4
355	B	BV	46.7	46.1	45.4	42.7	42.1	41.4	39.7	39.1	38.2	36.5	35.8	34.8	33.9	33.1	32	31.2	30.4	29.2	29.4	28.5	27.3	26.3	25
360	B	BV	46.1	45.4	44.7	42.1	41.6	40.9	39.2	38.6	37.7	36	35.3	34.4	33.4	32.7	31.6	30.7	29.9	28.8	28.9	28.1	26.9	25.9	24.6
365	B	BV	45.5	44.8	44.1	41.5	41	40.4	38.6	38.1	37.3	35.6	34.9	34	33	32.2	31.2	30.3	29.5	28.4	28.5	27.7	26.6	25.5	24.3
370	B	BV	44.9	44.3	43.6	41	40.5	39.9	38.1	37.6	36.8	35.1	34.4	33.6	32.5	31.8	30.8	29.9	29.1	28	28.1	27.3	26.2	25.1	23.9
375	B	BV	44.3	43.7	43.1	40.5	40	39.4	37.6	37.1	36.4	34.6	34	33.2	32.1	31.4	30.4	29.4	28.7	27.7	27.7	26.9	25.9	24.7	23.6
380	B	BV	43.7	43.2	42.6	40	39.5	39	37.2	36.6	36	34.1	33.5	32.8	31.7	31	30.1	29	28.3	27.4	27.3	26.6	25.5	24.4	23.3
385	B	BV	43.1	42.7	42.2	39.5	39	38.5	36.7	36.2	35.6	33.7	33.1	32.4	31.2	30.6	29.7	28.6	27.9	27	26.9	26.2	25.2	24	22.9
390	B	BV	42.5	42.1	41.7	39	38.6	38.1	36.2	35.7	35.2	33.3	32.7	32	30.8	30.2	29.4	28.2	27.6	26.7	26.5	25.8	24.9	23.7	22.6
395	B	BV	42	41.6	41.2	38.5	38.1	37.7	35.8	35.3	34.8	32.9	32.4	31.7	30.5	29.8	29.1	27.9	27.2	26.4	26.2	25.5	24.6	23.3	22.3
400	B	BV	41.5	41.1	40.8	38	37.6	37.2	35.3	34.9	34.4	32.5	32	31.3	30.1	29.5	28.7	27.5	26.9	26.1	25.8	25.1	24.3	23	22
405	B	BV	41	40.6	40.3	37.6	37.2	36.8	34.9	34.5	34	32.1	31.6	31	29.7	29.2	28.5	27.2	26.6	25.7	25.5	24.8	24	22.6	21.7
410	B	BV	40.5	40.2	39.9	37.2	36.8	36.4	34.4	34	33.6	31.7	31.2	30.6	29.4	28.8	28.2	26.9	26.3	25.5	25.2	24.5	23.7	22.3	21.5
415	B	BV	40.1	39.8	39.5	36.7	36.3	36	34	33.6	33.2	31.2	30.8	30.3	29	28.5	27.9	26.5	26	25.2	24.9	24.2	23.4	22	21.2
420	B	BV	39.7	39.4	39.1	36.3	35.9	35.6	33.6	33.3	32.9	30.9	30.4	30	28.7	28.2	27.6	26.2	25.7	25	24.6	24	23.2	21.8	20.9

HSLDFB/HSLDFBV

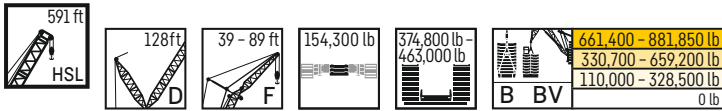
HSL 571 ft



ft	HSL	HSL 571 ft																							
		F 39 ft			F 49 ft			F 59 ft			F 69 ft			F 79 ft			F 89 ft			F 98 ft			F 108 ft		
		12°	18°	30°	12°	18°	30°	12°	18°	30°	12°	18°	30°	12°	18°	30°	12°	18°	30°	12°	18°	30°	18°	30°	
425	B BV	39.3	38.9	38.7	35.9	35.6	35.3	33.2	32.9	32.6	30.5	30.1	29.7	28.3	27.9	27.3	25.9	25.4	24.7	24.3	23.7	22.9	21.5	20.7	
430	B BV	38.8	38.5	38.3	35.6	35.2	35	32.9	32.5	32.2	30.1	29.7	29.4	27.9	27.5	27	25.5	25.1	24.5	24	23.4	22.7	21.2	20.4	
435	B BV	38.4	38.1	38	35.2	34.9	34.6	32.6	32.2	31.9	29.8	29.4	29.1	27.6	27.2	26.7	25.2	24.7	24.2	23.7	23.1	22.5	21	20.2	
440	B BV	38	37.7	37.6	34.8	34.5	34.3	32.2	31.9	31.6	29.5	29.1	28.8	27.3	26.8	26.4	24.9	24.4	23.9	23.3	22.8	22.2	20.7	20	
445	B BV	37.7	37.3	37.2	34.5	34.2	34	31.9	31.6	31.3	29.2	28.8	28.5	27	26.6	26.2	24.6	24.1	23.6	23	22.5	22	20.4	19.8	
450	B BV	37.3	37	36.9	34.1	33.8	33.7	31.6	31.3	31	28.8	28.5	28.2	26.7	26.3	25.9	24.3	23.8	23.4	22.7	22.2	21.7	20.1	19.6	
455	B BV	37	36.7	36.6	33.8	33.5	33.3	31.2	30.9	30.8	28.5	28.2	28	26.4	26	25.7	24	23.6	23.2	22.5	22	21.5	19.9	19.4	
460	B BV	36.7	36.4	36.4	33.5	33.2	33.1	30.9	30.6	30.5	28.2	27.9	27.7	26.1	25.8	25.5	23.8	23.4	22.9	22.2	21.7	21.3	19.6	19.1	
465	B BV	36.4	36.1	36.1	33.2	32.9	32.8	30.6	30.3	30.2	27.9	27.6	27.5	25.8	25.5	25.2	23.5	23.1	22.7	22	21.5	21.1	19.4	18.9	
470	B BV	36.1	35.8	35.8	32.9	32.7	32.6	30.3	30.1	30	27.7	27.4	27.2	25.5	25.2	25	23.2	22.9	22.5	21.8	21.3	20.9	19.2	18.7	
475	B BV	35.8	35.6	35.6	32.6	32.4	32.4	30.1	29.8	29.7	27.4	27.1	27	25.3	24.9	24.8	23	22.6	22.3	21.5	21.1	20.7	19	18.5	
480	B BV	35.5	35.3	35.3	32.4	32.1	32.1	29.8	29.6	29.5	27.2	26.9	26.8	25	24.7	24.5	22.7	22.4	22.1	21.3	20.9	20.6	18.8	18.4	
485	B BV	35.2	35	35.1	32.1	31.9	31.9	29.6	29.3	29.3	26.9	26.7	26.5	24.8	24.5	24.3	22.5	22.2	21.9	21.1	20.7	20.4	18.7	18.2	
490	B BV	35	34.8	34.9	31.8	31.6	31.7	29.3	29.1	29.1	26.7	26.5	26.4	24.6	24.3	24.2	22.3	22	21.8	20.9	20.5	20.2	18.5	18.1	
495	B BV	34.8	34.6	34.7	31.6	31.4	31.5	29.1	28.9	28.9	26.5	26.3	26.2	24.4	24.1	24	22.1	21.8	21.6	20.7	20.3	20.1	18.3	17.9	
500	B BV	34.6	34.4	34.6	31.5	31.3	31.3	28.8	28.6	28.7	26.3	26	26	24.2	23.9	23.8	21.9	21.6	21.4	20.5	20.1	19.9	18.1	17.8	
505	B BV	34.4	34.2	34.4	31.3	31.1	31.2	28.7	28.4	28.5	26	25.8	25.8	23.9	23.7	23.6	21.7	21.4	21.3	20.3	19.9	19.8	18	17.6	
510	B BV	34.1	34	34.2	31.1	30.9	31	28.5	28.3	28.4	25.8	25.6	25.6	23.7	23.5	23.5	21.5	21.2	21.2	20.1	19.8	19.6	17.8	17.5	
515	B BV	33.8	33.6	33.9	30.9	30.8	30.9	28.3	28.2	28.3	25.7	25.5	25.5	23.5	23.3	23.3	21.3	21.1	21	19.9	19.6	19.5	17.6	17.3	
520	B BV	33.3	33.2	33.5	30.6	30.5	30.7	28.2	28	28.2	25.5	25.4	25.4	23.3	23.1	23.2	21.1	20.9	20.9	19.7	19.5	19.3	17.5	17.2	
525	B BV	32.5	32.4	32.7	30.4	30.3	30.5	28	27.9	28.1	25.4	25.2	25.3	23.2	23	23	20.9	20.7	20.7	19.6	19.3	19.2	17.3	17.1	
530	B BV		31.6	31.9	30	30	30.2	27.8	27.7	27.9	25.3	25.1	25.2	23.1	22.9	22.9	20.8	20.5	20.6	19.4	19.2	19.1	17.2	17	
535	B BV				29.5	29.5	29.7	27.6	27.5	27.8	25.1	25	25.1	22.9	22.7	22.8	20.6	20.4	20.5	19.2	19	19	17	16.8	
540	B BV					28.9	29.2	27.4	27.3	27.6	25	24.8	25	22.8	22.6	22.7	20.5	20.3	20.4	19.1	18.8	18.8	16.8	16.7	
545	B BV							27.1	27	27.3	24.8	24.7	24.9	22.7	22.5	22.7	20.4	20.2	20.3	18.9	18.7	18.7	16.7	16.6	
550	B BV									26.7	26.9	24.6	24.5	24.7	22.6	22.4	22.6	20.3	20.1	20.2	18.8	18.7	18.6	16.6	16.5
555	B BV										24.4	24.3	24.5	22.4	22.3	22.5	20.2	20	20.1	18.7	18.6	18.6	16.5	16.4	
560	B BV											24.3	22.3	22.2	22.4	20.1	19.9	20.1	18.6	18.5	18.5	16.4	16.4		
565	B BV												22.2	22.1	22.4	20	19.8	20	18.5	18.4	18.5	16.3	16.3		
570	B BV													22.3	19.9	19.8	19.9	18.4	18.3	18.4	16.2	16.2			
575	B BV														19.9	19.8	19.9	18.4	18.2	18.4	16.2	16.2			
580	B BV																19.9	18.3	18.2	18.4	16.1	16.2			
585	B BV																		18.2	18.4	16	16.2			
590	B BV																				18.4	16	16.1		
595	B BV																						16	16.1	

HSLDFB/HSLDFBV

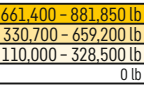
HSL 591 ft



ft	HSL 591 ft																	
	F 39 ft			F 49 ft			F 59 ft			F 69 ft			F 79 ft			F 89 ft		
	12°	18°	30°	12°	18°	30°	12°	18°	30°	12°	18°	30°	12°	18°	30°	12°	18°	30°
85	99.8																	
90	98.8	95.5		89.6														
95	97.8	94.5	88.6	88.6	85		81.1			74.2								
100	96.7	93.5	87.8	87.7	84.2		80.2	76.5		73.4			67.8			62.6		
105	95.7	92.6	87.1	86.7	83.4	77.4	79.4	75.8		72.7	68.9		67.1	63.2		61.9		
110	94.6	91.6	86.3	85.8	82.6	76.7	78.6	75.1	68.8	71.9	68.2		66.4	62.6		61.3	57.3	
115	93.5	90.7	85.5	84.9	81.7	76	77.7	74.3	68.2	71.1	67.6	61.1	65.7	62		60.6	56.8	
120	92.5	89.7	84.6	84	80.9	75.2	76.9	73.6	67.4	70.4	66.9	60.5	65	61.4	54.7	60	56.2	
125	91.5	88.8	83.6	83	80	74.3	76	72.8	66.6	69.6	66.2	59.8	64.3	60.8	54.2	59.3	55.7	49
130	90.4	87.8	82.6	82.1	79.2	73.5	75.2	72.1	65.9	68.8	65.6	59.2	63.6	60.2	53.6	58.6	55.1	48.5
135	89.3	86.7	81.6	81.1	78.2	72.5	74.3	71.2	65.2	68	64.8	58.5	62.8	59.5	53	58	54.5	48
140	88.2	85.6	80.5	80.1	77.2	71.6	73.4	70.3	64.4	67.3	63.9	57.8	62.1	58.7	52.4	57.3	53.9	47.4
145	87.1	84.4	79.5	79.1	76.1	70.7	72.4	69.3	63.6	66.3	63.1	57.1	61.3	57.9	51.8	56.6	53.2	46.8
150	85.9	83.2	78.4	77.9	75	69.8	71.4	68.2	62.8	65.4	62.1	56.4	60.4	57.1	51.2	55.8	52.4	46.3
155	84.6	82	77.3	76.7	73.9	68.9	70.3	67.2	62	64.4	61.2	55.7	59.5	56.2	50.5	54.9	51.6	45.7
160	83.3	80.9	76.3	75.6	72.8	68	69.2	66.2	61.2	63.4	60.3	55	58.5	55.4	49.9	54	50.8	45.1
165	82	79.6	75.4	74.5	71.9	67	68.2	65.3	60.4	62.3	59.3	54.2	57.6	54.5	49.2	53.1	50	44.6
170	80.6	78.3	74.4	73.2	70.8	66.3	67.2	64.4	59.5	61.3	58.5	53.5	56.6	53.6	48.5	52.2	49.2	44.1
175	79.4	77	73.1	71.9	69.5	65.5	66	63.5	58.8	60.3	57.7	52.7	55.6	52.8	47.8	51.3	48.3	43.6
180	78.1	75.9	71.9	70.8	68.3	64.4	64.7	62.4	58.2	59.2	56.9	52.1	54.7	51.9	47.1	50.4	47.5	43.1
185	76.8	74.8	71	69.8	67.3	63.3	63.8	61.3	57.4	58.2	55.8	51.6	53.7	51	46.5	49.5	46.7	42.5
190	75.4	73.5	70	68.6	66.3	62.4	62.8	60.3	56.3	57.3	54.7	50.9	52.8	50.2	45.7	48.6	45.9	42
195	74.1	72.3	69	67.5	65.3	61.5	61.8	59.4	55.3	56.4	53.9	49.9	52	49.3	45	47.7	45.1	41.5
200	72.7	71	68	66.3	64.3	60.6	60.7	58.5	54.6	55.4	53	48.9	51.1	48.5	44.5	46.9	44.4	40.9
205	71.4	69.7	66.9	65	63.1	59.8	59.6	57.6	53.8	54.5	52.2	48.2	50.2	47.8	43.9	46.1	43.8	40.4
210	70	68.4	65.7	63.8	61.9	58.8	58.5	56.5	53.1	53.5	51.3	47.5	49.3	47	43.4	45.3	43.2	39.9
215	68.7	67.1	64.6	62.5	60.8	57.8	57.4	55.5	52.3	52.4	50.4	46.9	48.4	46.2	42.9	44.5	42.6	39.4
220	67.5	66	63.4	61.3	59.6	56.8	56.2	54.4	51.4	51.4	49.5	46.2	47.4	45.5	42.3	43.8	42	38.9
225	66.3	64.8	62.3	60.2	58.5	55.8	55.1	53.4	50.5	50.3	48.5	45.5	46.5	44.7	41.8	43	41.4	38.4
230	65.1	63.6	61.3	59.1	57.4	54.9	54.1	52.4	49.6	49.3	47.5	44.8	45.6	44	41.3	42.3	40.7	37.9
235	63.9	62.4	60.2	58	56.4	53.9	53.1	51.4	48.7	48.4	46.6	44.1	44.7	43.2	40.7	41.5	40	37.4
240	62.8	61.4	59.2	56.9	55.4	53	52	50.4	47.9	47.5	45.8	43.4	43.9	42.4	40.1	40.8	39.4	36.9
245	61.6	60.3	58.2	55.9	54.4	52.1	51	49.5	47.1	46.6	45	42.7	43.1	41.8	39.5	40.1	38.7	36.3
250	60.5	59.2	57.2	54.9	53.4	51.2	50.1	48.6	46.3	45.8	44.3	42.1	42.4	41.1	38.9	39.4	38.1	35.8

HSLDFB/HSLDFBV

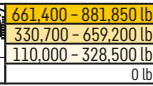
HSL 591 ft



ft	HSL 591 ft																	
	F 39 ft			F 49 ft			F 59 ft			F 69 ft			F 79 ft			F 89 ft		
	12°	18°	30°	12°	18°	30°	12°	18°	30°	12°	18°	30°	12°	18°	30°	12°	18°	30°
255	59.4	58.1	56.3	53.9	52.5	50.3	49.2	47.7	45.6	45	43.6	41.5	41.7	40.4	38.3	38.8	37.4	35.2
260	58.4	57.1	55.3	52.8	51.5	49.5	48.3	46.9	44.9	44.2	42.9	40.9	41	39.7	37.7	38.1	36.8	34.7
265	57.4	56.2	54.4	51.9	50.6	48.6	47.3	46	44.2	43.4	42.2	40.3	40.4	39.1	37.2	37.5	36.2	34.2
270	56.4	55.3	53.5	51.1	49.7	47.7	46.6	45.2	43.5	42.6	41.5	39.7	39.7	38.5	36.6	36.8	35.6	33.6
275	55.4	54.3	52.7	50.2	48.9	47	45.8	44.5	42.8	41.9	40.8	39.1	39	37.9	36.1	36.2	35	33.1
280	54.5	53.4	51.8	49.3	48.1	46.3	45.1	43.9	42.2	41.3	40.2	38.5	38.4	37.3	35.6	35.6	34.4	32.6
285	53.6	52.5	51	48.5	47.3	45.6	44.3	43.2	41.7	40.7	39.7	38	37.9	36.7	35	35	33.8	32.1
290	52.6	51.6	50.2	47.7	46.6	44.9	43.7	42.6	41.1	40.1	39.1	37.5	37.3	36.2	34.5	34.5	33.3	31.6
295	51.7	50.7	49.4	46.9	45.8	44.3	43	42	40.6	39.5	38.5	37	36.7	35.7	34	33.9	32.8	31.1
300	50.8	49.9	48.6	46.1	45.1	43.7	42.4	41.4	40.1	39	38	36.5	36.2	35.1	33.6	33.4	32.4	30.7
305	50	49.1	47.8	45.4	44.4	43.1	41.8	40.9	39.6	38.4	37.5	36	35.6	34.6	33.1	32.9	31.9	30.3
310	49.1	48.2	47.1	44.6	43.8	42.6	41.2	40.3	39	37.8	36.9	35.6	35.1	34.1	32.7	32.4	31.4	29.8
315	48.2	47.4	46.3	43.9	43.2	42	40.6	39.8	38.5	37.3	36.4	35.1	34.6	33.7	32.3	31.9	30.9	29.4
320	47.4	46.7	45.6	43.2	42.5	41.5	40	39.2	38.1	36.8	35.9	34.6	34.1	33.2	31.9	31.4	30.5	29
325	46.6	45.9	45	42.6	41.9	41	39.5	38.7	37.6	36.2	35.4	34.2	33.6	32.7	31.4	30.9	30	28.6
330	45.8	45.2	44.3	42	41.3	40.4	38.9	38.1	37.1	35.7	34.9	33.7	33.1	32.2	31	30.5	29.6	28.3
335	45.1	44.4	43.7	41.4	40.8	39.9	38.4	37.7	36.6	35.2	34.4	33.3	32.6	31.8	30.6	30	29.1	27.9
340	44.5	43.9	43.1	40.8	40.2	39.4	37.9	37.2	36.2	34.7	34	32.9	32.1	31.3	30.2	29.5	28.7	27.5
345	43.9	43.3	42.6	40.3	39.7	38.9	37.3	36.7	35.8	34.2	33.5	32.5	31.7	30.9	29.8	29.1	28.3	27.1
350	43.3	42.7	42.1	39.7	39.1	38.4	36.8	36.2	35.3	33.8	33.1	32.1	31.2	30.5	29.4	28.7	27.9	26.8
355	42.7	42.1	41.5	39.2	38.6	38	36.3	35.8	34.9	33.3	32.6	31.7	30.8	30.1	29.1	28.3	27.5	26.4
360	42.1	41.6	41	38.6	38.1	37.5	35.9	35.3	34.5	32.9	32.2	31.3	30.3	29.7	28.7	27.8	27.1	26
365	41.5	41.1	40.5	38.1	37.6	37	35.4	34.8	34.1	32.4	31.8	30.9	29.9	29.3	28.4	27.4	26.7	25.7
370	41	40.5	40	37.6	37.1	36.5	34.9	34.4	33.7	32	31.4	30.6	29.5	28.9	28	27	26.3	25.4
375	40.5	40	39.5	37.1	36.6	36.1	34.4	33.9	33.3	31.6	31	30.2	29.1	28.5	27.7	26.7	26	25
380	40	39.5	39.1	36.6	36.1	35.6	34	33.5	32.9	31.1	30.6	29.8	28.7	28.1	27.3	26.3	25.6	24.7
385	39.5	39	38.6	36.2	35.7	35.2	33.5	33	32.5	30.7	30.2	29.5	28.4	27.8	27	25.9	25.3	24.4
390	39	38.6	38.2	35.7	35.3	34.8	33.1	32.6	32.1	30.3	29.8	29.2	28	27.4	26.7	25.5	24.9	24.1
395	38.5	38.1	37.7	35.3	34.9	34.4	32.7	32.2	31.7	29.9	29.4	28.8	27.6	27	26.4	25.2	24.6	23.8
400	38	37.6	37.3	34.8	34.4	34	32.3	31.8	31.4	29.5	29	28.5	27.2	26.7	26.1	24.8	24.3	23.5
405	37.5	37.1	36.9	34.4	34	33.6	31.9	31.4	31	29.2	28.7	28.2	26.9	26.3	25.7	24.5	23.9	23.2
410	37.1	36.7	36.4	34	33.6	33.3	31.5	31	30.6	28.8	28.3	27.9	26.6	26	25.4	24.1	23.6	23
415	36.6	36.3	36	33.5	33.2	32.9	31.1	30.7	30.3	28.4	28	27.5	26.2	25.7	25.1	23.8	23.3	22.7
420	36.2	35.9	35.6	33.2	32.8	32.5	30.7	30.3	29.9	28	27.6	27.2	25.9	25.4	24.9	23.5	23	22.4

HSLDFB/HSLDFBV

HSL 591 ft

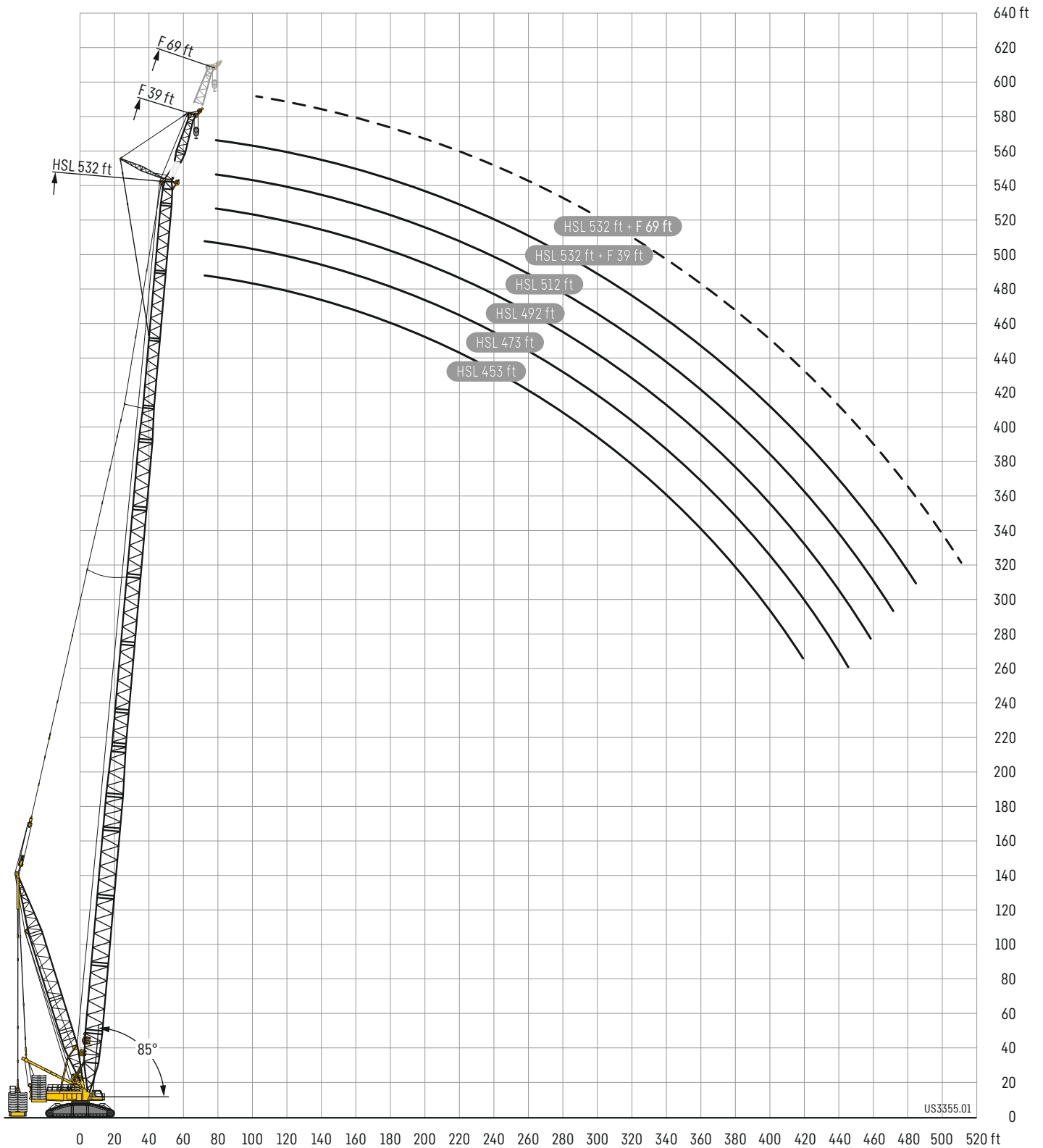


ft	HSL 591 ft																			
	F 39 ft			F 49 ft			F 59 ft			F 69 ft			F 79 ft			F 89 ft				
	12°	18°	30°	12°	18°	30°	12°	18°	30°	12°	18°	30°	12°	18°	30°	12°	18°	30°		
425	B	BV	35.8	35.5	35.3	32.8	32.4	32.2	30.3	29.9	29.6	27.7	27.3	26.9	25.5	25.1	24.6	23.2	22.7	22.2
430	B	BV	35.4	35.1	34.9	32.4	32	31.8	29.9	29.5	29.3	27.3	26.9	26.6	25.2	24.8	24.4	22.9	22.5	22
435	B	BV	35	34.7	34.6	32	31.7	31.5	29.6	29.2	28.9	27	26.6	26.3	24.9	24.5	24.1	22.6	22.2	21.7
440	B	BV	34.7	34.3	34.2	31.7	31.4	31.2	29.2	28.9	28.6	26.6	26.3	26	24.6	24.2	23.8	22.3	21.9	21.5
445	B	BV	34.3	34	33.9	31.3	31	30.8	28.9	28.6	28.3	26.3	26	25.7	24.3	23.9	23.6	22	21.6	21.2
450	B	BV	33.9	33.6	33.5	31	30.7	30.5	28.6	28.3	28.1	26	25.7	25.4	24	23.6	23.3	21.8	21.4	21
455	B	BV	33.4	33.2	33.2	30.6	30.4	30.2	28.3	28	27.8	25.7	25.4	25.2	23.7	23.3	23.1	21.5	21.1	20.7
460	B	BV	33.1	32.9	32.8	30.3	30.1	29.9	28	27.7	27.5	25.4	25.1	24.9	23.4	23.1	22.8	21.2	20.9	20.5
465	B	BV	32.8	32.6	32.6	30	29.7	29.6	27.7	27.4	27.2	25.1	24.8	24.7	23.1	22.8	22.6	21	20.6	20.3
470	B	BV	32.5	32.3	32.3	29.7	29.5	29.4	27.3	27.1	26.9	24.8	24.6	24.4	22.9	22.6	22.4	20.7	20.4	20
475	B	BV	32.2	32	32	29.4	29.2	29.1	27	26.8	26.7	24.5	24.3	24.2	22.6	22.3	22.1	20.4	20.1	19.8
480	B	BV	31.9	31.7	31.8	29.1	28.9	28.9	26.8	26.5	26.4	24.3	24	23.9	22.3	22.1	21.9	20.2	19.9	19.6
485	B	BV	31.6	31.5	31.5	28.8	28.7	28.6	26.5	26.3	26.2	24	23.8	23.7	22	21.8	21.7	20	19.7	19.4
490	B	BV	31.4	31.2	31.3	28.6	28.4	28.4	26.3	26	26	23.8	23.6	23.5	21.8	21.5	21.4	19.7	19.4	19.2
495	B	BV	31.1	30.9	31	28.3	28.1	28.2	26	25.8	25.8	23.6	23.3	23.3	21.6	21.3	21.2	19.5	19.2	19
500	B	BV	30.8	30.7	30.8	28.1	27.9	28	25.8	25.6	25.6	23.4	23.1	23.1	21.4	21.1	21	19.3	19	18.8
505	B	BV	30.7	30.5	30.6	27.8	27.6	27.7	25.5	25.4	25.4	23.1	22.9	22.9	21.2	20.9	20.9	19	18.8	18.6
510	B	BV	30.5	30.3	30.4	27.6	27.4	27.5	25.3	25.1	25.2	22.9	22.7	22.7	21	20.7	20.7	18.8	18.6	18.5
515	B	BV	30.3	30.1	30.3	27.4	27.3	27.4	25.1	24.9	25	22.7	22.5	22.5	20.8	20.6	20.5	18.6	18.4	18.3
520	B	BV	30.1	29.9	30.1	27.2	27.1	27.2	24.9	24.7	24.8	22.5	22.3	22.4	20.6	20.4	20.4	18.5	18.2	18.2
525	B	BV	29.7	29.6	29.9	27.1	26.9	27.1	24.8	24.6	24.7	22.3	22.1	22.2	20.4	20.2	20.2	18.3	18.1	18
530	B	BV	29.3	29.2	29.4	26.9	26.7	26.9	24.6	24.4	24.6	22.1	22	22	20.2	20	20	18.1	17.9	17.9
535	B	BV	28.8	28.7	29	26.6	26.5	26.8	24.4	24.3	24.4	22	21.8	21.9	20	19.8	19.9	17.9	17.7	17.7
540	B	BV	27.8	27.9	28.2	26.2	26.1	26.4	24.3	24.1	24.3	21.8	21.7	21.8	19.9	19.7	19.8	17.7	17.5	17.6
545	B	BV	26.8	26.9	27.1	25.7	25.7	26	24	23.9	24.2	21.7	21.6	21.7	19.7	19.6	19.7	17.6	17.4	17.5
550	B	BV				24.9	25	25.3	23.7	23.6	23.8	21.5	21.4	21.6	19.6	19.4	19.6	17.5	17.3	17.3
555	B	BV				24.1	24.2	24.4	23.3	23.3	23.5	21.3	21.2	21.4	19.5	19.3	19.5	17.3	17.2	17.3
560	B	BV							22.6	22.6	23	21	21	21.2	19.3	19.2	19.4	17.2	17.1	17.2
565	B	BV							22	22	22.3	20.6	20.7	20.9	19.1	19	19.2	17.1	16.9	17.1
570	B	BV										20.1	20.1	20.5	18.9	18.8	19	16.9	16.8	17
575	B	BV											19.6	19.9	18.5	18.6	18.8	16.8	16.7	16.9
580	B	BV													18.1	18.1	18.5	16.6	16.5	16.7
585	B	BV														17.7	18	16.2	16.2	16.5
590	B	BV																15.8	15.9	16.2
595	B	BV																		15.8

Hubhöhen

HSLDFB/HSLDFBV

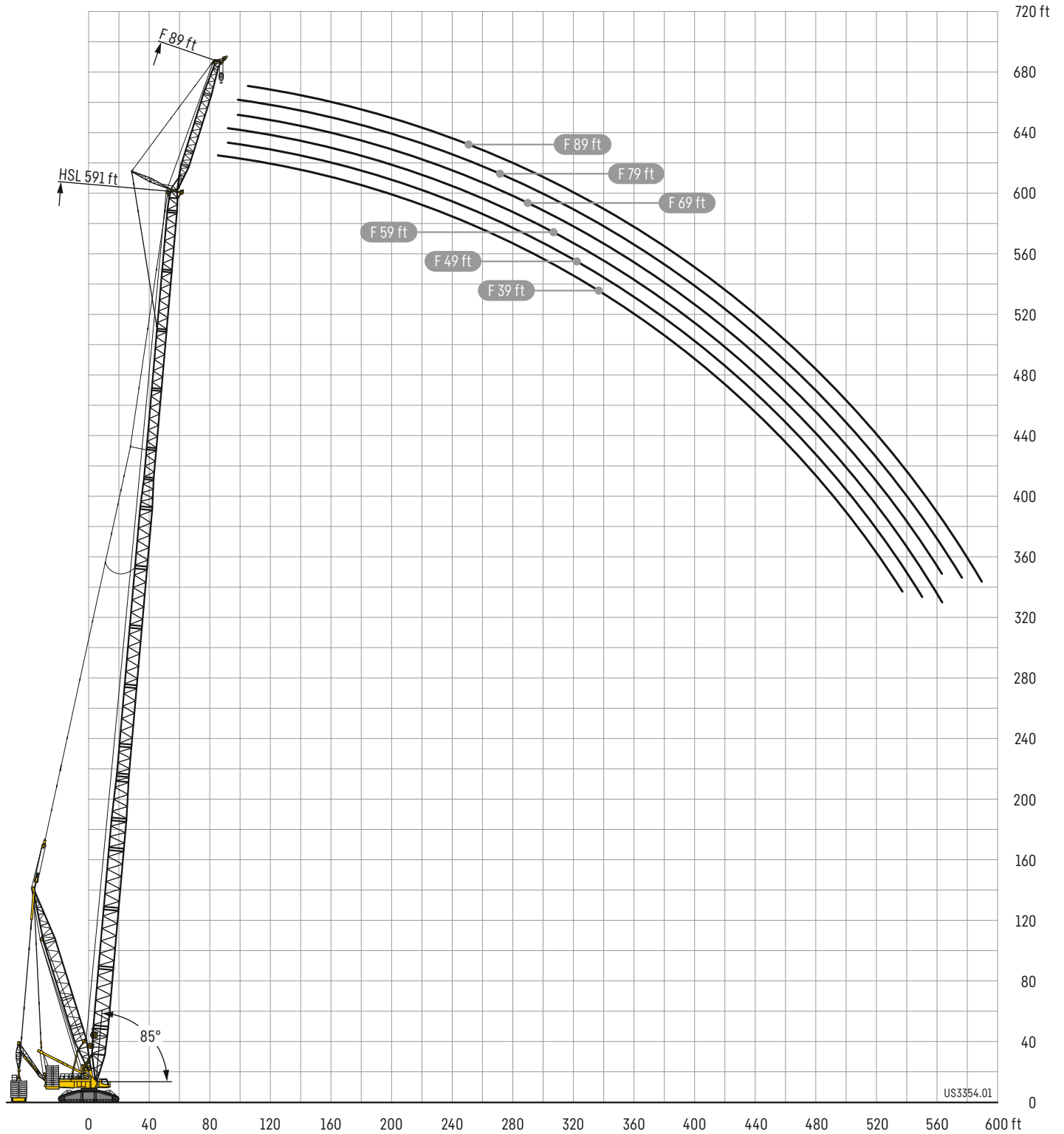
Lifting heights • Hauteurs de levage • Altezze di sollevamento • Alturas de elevación • Высота подъема



Lifting heights

HSLDFB/HSLDFBV

Hauteurs de levage



Proposition 65



WARNING: This product can expose you to chemicals, including exhaust emissions, including lead and lead compounds, which are known to the State of California to cause cancer, birth defects or other reproductive harm. For more information see: www.P65warnings.ca.gov/diesel