
A 924 Heavy Lift Litronic

LIEBHERR

Wheeled excavator



Generation
6

Operating weight
58,900–60,600 lb

Engine
215 HP / 160 kW
Stage V
Tier 4 Final

Bucket capacity
0.98–2.22 yd³

Technical data

Diesel engine

Rating	
per SAE J1349	215 HP (160 kW) at 1,700 rpm
per ISO 9249	217 HP (160 kW) at 1,700 rpm
Model	Liebherr D934
Type	4 cylinder in-line
Bore / Stroke	4.8 / 5.9 in
Displacement	427.2 in ³
Engine operation	4-stroke diesel Common-Rail Turbo-charged and after-cooled Reduced emissions
Air cleaner	Dry-type air cleaner with pre-cleaner, primary and safety elements
Engine idling	Sensor controlled
Electrical system	
Voltage	24 V
Batteries	2 x 135 Ah / 12 V
Alternator	Three-phase current 28 V / 140 A
Stage V	
Harmful emissions values	According to regulation (EU) 2016/1628
Emission control	Liebherr-SCRFilter technology
Fuel tank	87 gal
Urea tank	12 gal
Tier 4 Final	
Harmful emissions values	In accordance with 40CFR1039 (EPA) / 13CCR (CARB)
Emission control	Liebherr-SCR technology
Option	Liebherr particle filter
Fuel tank	87 gal
Urea tank	12 gal

Cooling system

Diesel engine	Water-cooled Compact cooling system consisting cooling unit for water, hydraulic oil and charge air with stepless thermostatically controlled fan
----------------------	--

Hydraulic controls

Power distribution	Via control valves in single block with integrated safety valves
Servo circuit	
Equipment and swing	With hydraulic pilot control and proportional joystick levers
Chassis	Electro-proportional via foot pedal
Additional functions	Via switch or electro-proportional foot pedals
Proportional control	Proportionally acting transmitters on the joysticks for additional hydraulic functions

Hydraulic system

Hydraulic pump	
For equipment and travel drive	2 Liebherr axial piston variable displacement pumps (double construction)
Max. flow	2 x 61 gpm
Max. pressure	5,076 psi, PowerLift 5,511 psi
For swing drive	Reversible axial piston variable displacement pump, closed-loop circuit
Max. flow	37 gpm
Max. pressure	6,092 psi
Hydraulic pump regulation and control	Liebherr-Synchron-Comfort-system (LSC) with electronic engine speed sensing regulation, pressure and flow compensation, torque controlled swing drive priority
Hydraulic tank	46 gal
Hydraulic system	max. 114 gal
Filtration	1 main return filter with integrated partial micro filtration (5 µm)
MODE selection	Adjustment of engine and hydraulic performance via a mode pre-selector to match application, e.g. for especially economical and environmentally friendly operation or for maximum digging performance and heavy-duty jobs
S (Sensitive)	Mode for precision work and lifting through very sensitive movements
E (Eco)	Mode for especially economical and environmentally friendly operation
P (Power)	Mode for high performance with low fuel consumption
P+ (Power-Plus)	Mode for highest performance and for very heavy duty applications, suitable for continuous operation
Engine speed and performance setting	Stepless alignment of engine output and hydraulic power via engine speed
Option	Tool Control: 20 pre-adjustable pump flows and pressures for add-on attachments

Swing drive

Drive	Liebherr axial piston motor in a closed system, Liebherr planetary reduction gear
Swing ring	Liebherr, sealed race ball bearing swing ring, internal teeth
Swing speed	0-10.0 rpm stepless
Swing torque	56,055 lbf ft
Holding brake	Wet multi-disc (spring applied, pressure released)
Option	Pedal controlled positioning swing brake Slewing gear brake Comfort



Cab

Cab	ROPS safety cab structure (roll-over protection system) with individual windscreens or featuring a slide-in subpart under the ceiling, work headlights integrated in the ceiling, a door with a sliding window (can be opened on both sides), large stowing and depositing possibilities, shock-absorbing suspension, sound damping insulating, tinted laminated safety glass, separate window shades for the sunroof window and windscreen
Operator's seat Standard	Air cushioned operator's seat with 3D-adjustable armrests, headrest, lap belt, seat heater, manual weight adjustment, adjustable seat cushion inclination and length and mechanical lumbar vertebrae support
Operator's seat Comfort (Option)	In addition to operator's seat standard: lockable horizontal suspension, automatic weight adjustment, adjustable suspension stiffness, pneumatic lumbar vertebrae support and passive seat climatization with active coal
Operator's seat Premium (Option)	In addition to operator's seat comfort: active electronic weight adjustment (automatic readjustment), pneumatic low frequency suspension and active seat climatization with active coal and ventilator
Arm consoles	Joysticks with control consoles and swivel seat, folding left control console
Operation and displays	Large high-resolution operating unit, self-explanatory, color display with touchscreen, video-compatible, numerous setting, control and monitoring options, e.g. air conditioning control, fuel consumption, machine and attachment parameters
Air-conditioning	Automatic air-conditioning, recirculated air function, fast de-icing and demisting at the press of a button, air vents can be operated via a menu; recirculated air and fresh air filters can be easily replaced and are accessible from the outside; heating-cooling unit, designed for extreme outside temperatures, sensors for solar radiation, inside and outside temperatures



Undercarriage

Drive	Oversized two speed power shift transmission with additional creeper speed, Liebherr axial piston motor with functional brake valve on both sides
Pulling force	29,000 lbf
Travel speed	0- 2.2 mph stepless (creeper speed off-road) 0- 4.3 mph stepless (off-road) 0- 8.1 mph stepless (creeper speed on-road) 0-12.4 mph stepless (road travel)
Driving operation	Automotive driving using accelerator pedal, cruise control function: storage of variable accelerator pedal positions, both off-road and on-road
Axles	Manual or automatic hydraulically controlled front axle oscillation lock
Service brake	Two circuit travel brake system with accumulator; wet and backlash-free disc brake
Automatic digging brake	Works automatically when driving off (accelerator pedal actuation) and when the machine is stationary (engagement); the digging brake engages automatically - can be coupled with automatic swing axle lock
Holding brake	Wet multi-disc (spring applied, pressure released)
Stabilization	Rear stabilizer blade + front outriggers Rear outriggers + front stabilizer blade Rear + front outriggers
EW undercarriage	9'



Equipment

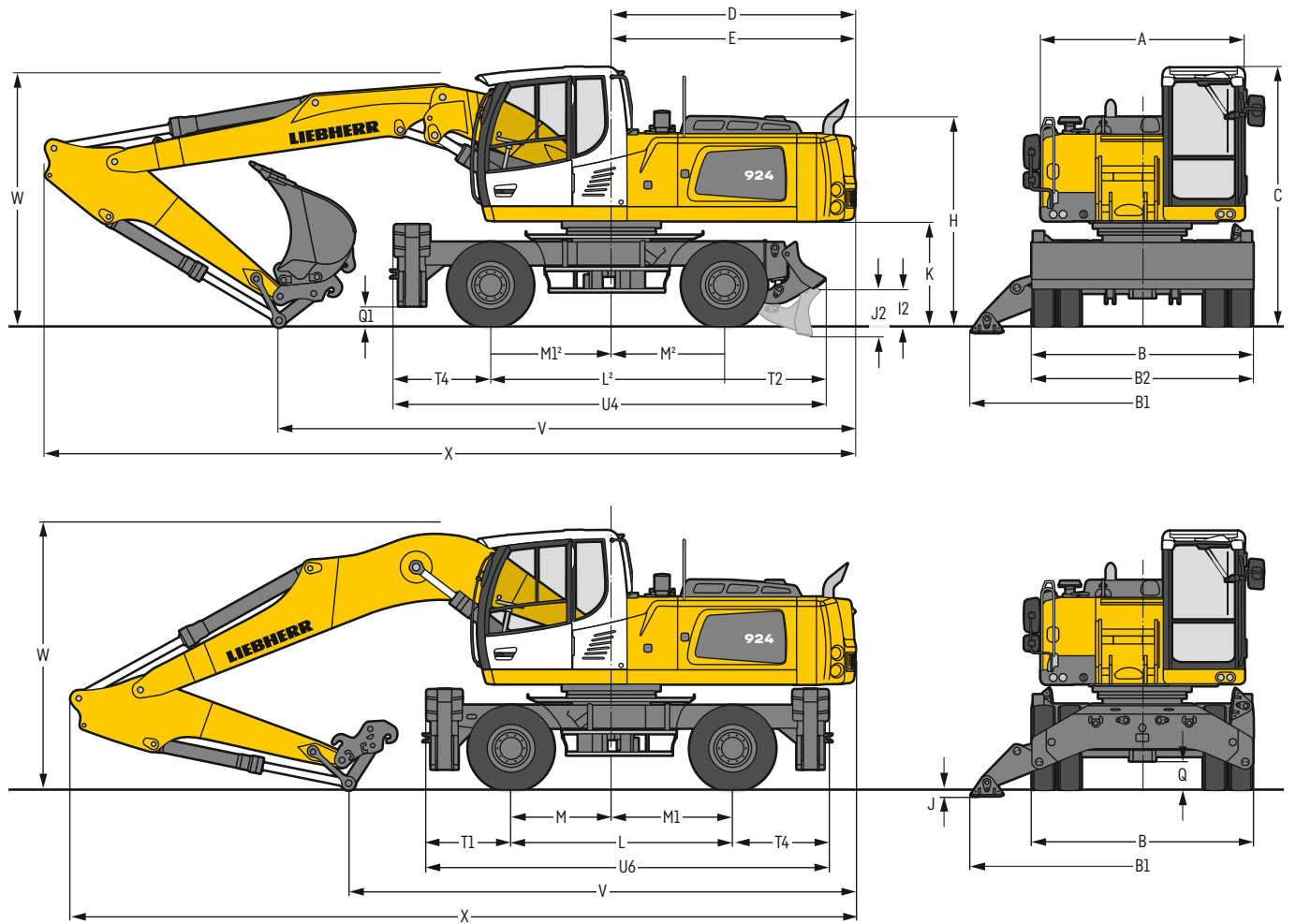
Type	High-strength steel plates at highly-stressed points for the toughest requirements. Complex and stable mountings of equipment and cylinders
Hydraulic cylinders	Liebherr cylinders with special sealing and guide system and, depending on cylinder type, shock absorption
Bearings	Sealed, low maintenance



Complete machine

Lubrication	Liebherr central lubrication system for uppercarriage and equipment, automatically
Noise emission	
ISO 6396	72 dB(A) = L _{pA} (inside cab)
2000/14/EC	104 dB(A) = L _{WA} (surround noise)

Dimensions



	ft in
A	8' 3"
B	9'
B1	14'
B2	9'
C	10' 7"
D	9'11"
E	9'11"
H	8' 7"
I2	1' 6"
J	3"
J2	1'11"
K	4' 2"
L	9'
L ²⁾	9' 6"
M	4' 1"
M ²⁾	4' 7"
M1	4'11"
M1 ²⁾	4'11"
Q	1' 2"
Q1	10"
T1	3' 5"
T2	4' 2"
T4	3'11"
U4	17' 7"
U6	16' 4"

²⁾ Undercarriage version stabilizer blade rear + front outriggers
E = Tail radius
Tires 11.00-20

	Stick ft in	Two-piece boom 19' HD	
		Rear blade + front outriggers ft in	Rear + front outriggers ft in
V	7'5"	25'7"	25'7"
	8'	24'5"	24'5"
	8'8"	23'5"	23'5"
	10'	22'6"	22'6"
W	7'5"	10'4"	10'4"
	8'	10'4"	10'4"
	8'8"	10'4"	10'4"
	10'	10'6"	10'6"
X	7'5"	33'2"	33'2"
	8'	33'2"	33'2"
	8'8"	33'2"	33'2"
	10'	33'	33'

	Stick ft in	Mono boom 18'6" HD	
		Rear blade + front outriggers ft in	Rear + front outriggers ft in
V	7'5"	21' 8"	21' 8"
	8'	21' 2"	21' 2"
	8'8"	20' 8"*	20' 8"*
	10'	22' 8" ¹⁾²⁾	22' 8" ¹⁾²⁾
W	7'5"	10' 8"	10' 8"
	8'	10'10"	10'10"
	8'8"	11'*	11'*
	10'	11' ¹⁾	11' ¹⁾
X	7'5"	32'	32'
	8'	32'	32'
	8'8"	32'*	32'*
	10'	32' 2" ¹⁾	32' 2" ¹⁾

Dimensions are with equipment over steering axle

* Equipment over digging axle for shorter transport dimensions

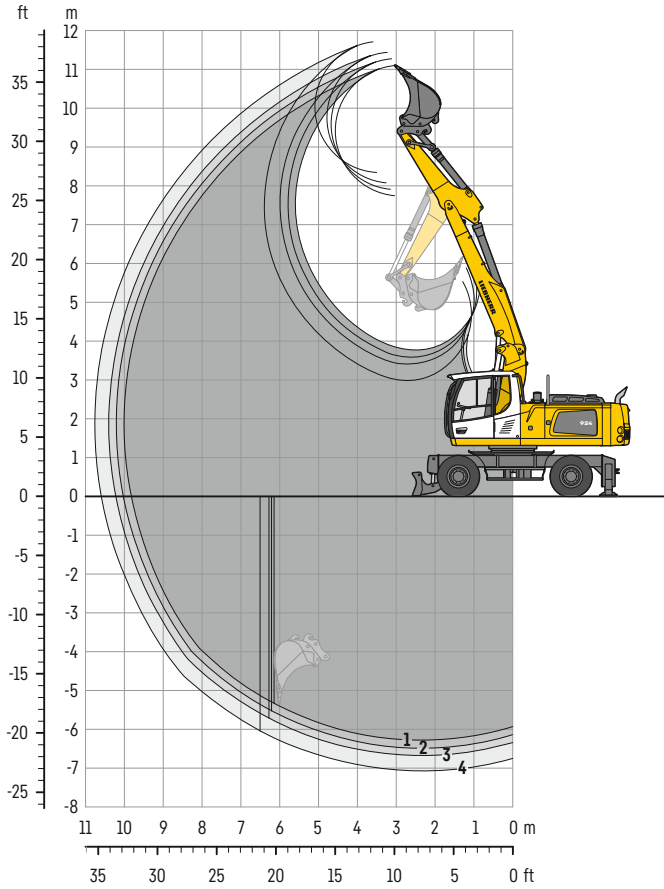
¹⁾ without quick coupler

²⁾ tipping cylinder retracted

W = Max. ground clearance including approx. 6" piping

Backhoe bucket

with two-piece boom 19' HD



Digging envelope

with quick coupler		1	2	3	4
Stick length	ft in	7'5"	8'	8'8"	10'
Max. digging depth	ft in	20'8"	21' 4"	22'	23'2"
Max. reach at ground level	ft in	32'4"	33'	33'8"	34'9"
Max. dumping height	ft in	25'5"	25'11"	26'5"	27'5"
Max. teeth height	ft in	36'5"	36'11"	37'7"	38'5"
Min. equipment radius	ft in	10'8"	10' 4"	10'2"	10'4"

Digging forces

without quick coupler		1	2	3	4
Max. digging force (ISO 6015)	lbf	33,384	31,406	29,652	26,707
Max. breakout force (ISO 6015)	lbf	33,290	31,300	29,540	26,680
	lb	38,128	38,128	38,128	38,128
	lb	38,140	38,140	38,140	38,140

Max. breakout force with ripper bucket 49,098 lbf (49,160 lb)

Operating weight

The operating weight includes the basic machine with 8 tires plus intermediate rings, two-piece boom 19' (HD), stick 8', quick coupler SWA 48 and bucket 47" / 1.77 yd³.

Undercarriage versions	Weight (lb)
A 924 Heavy Lift Litronic with rear blade + front outriggers	59,700
A 924 Heavy Lift Litronic with rear + front outriggers	60,400

Buckets Machine stability per ISO 10567* (75% of tipping capacity)

Cutting width ft in	Capacity ISO 7461 ¹⁾ yd ³	Weight lb	Stabilizers raised				Rear blade + front outriggers down				Rear + front outriggers down							
			Stick length (ft in)				Stick length (ft in)				Stick length (ft in)							
			7'5"	8'	8'8"	10'	7'5"	8'	8'8"	10'	7'5"	8'	8'8"	10'				
2' 9" ²⁾	0.98	1,367	■	■	■	■	■	■	■	■	■	■	■	■	■	■	■	■
3' 5" ²⁾	1.24	1,565	■	■	■	■	■	■	■	■	■	■	■	■	■	■	■	■
4' 1" ²⁾	1.50	1,786	■	■	■	■	■	■	■	■	■	■	■	■	■	■	■	■
4' 7" ²⁾	1.77	1,874	■	■	■	■	■	■	■	■	■	■	■	■	■	■	■	■
4'11" ²⁾	1.90	1,940	■	■	■	■	■	■	■	■	■	■	■	■	■	■	■	■
5' 3" ²⁾	2.03	2,072	■	■	△	△	■	■	■	■	■	■	■	■	■	■	■	■
2' 9" ³⁾	0.98	1,521	■	■	■	■	■	■	■	■	■	■	■	■	■	■	■	■
3' 5" ³⁾	1.24	1,764	■	■	■	■	■	■	■	■	■	■	■	■	■	■	■	■
4' 1" ³⁾	1.50	2,006	■	■	■	■	■	■	■	■	■	■	■	■	■	■	■	■
4' 7" ³⁾	1.77	2,116	■	■	■	■	■	■	■	■	■	■	■	■	■	■	■	■
4'11" ³⁾	1.90	2,205	■	■	■	■	■	■	■	■	■	■	■	■	■	■	■	■
5' 3" ³⁾	2.03	2,337	■	■	△	△	■	■	■	■	■	■	■	■	■	■	■	■
2' 9" ⁴⁾	1.05	1,389	■	■	■	■	■	■	■	■	■	■	■	■	■	■	■	■
3' 5" ⁴⁾	1.37	1,587	■	■	■	■	■	■	■	■	■	■	■	■	■	■	■	■
4' 1" ⁴⁾	1.70	1,764	■	■	■	■	■	■	■	■	■	■	■	■	■	■	■	■
4' 7" ⁴⁾	1.96	1,918	■	■	■	△	■	■	■	■	■	■	■	■	■	■	■	■
4'11" ⁴⁾	2.16	1,962	■	■	△	△	■	■	■	■	■	■	■	■	■	■	■	■
5' 3" ⁴⁾	2.22	2,094	■	△	△	△	■	■	■	■	■	■	■	■	■	■	■	■

* Indicated loads are based on ISO 10567 and do not exceed 75% of tipping or 87% of hydraulic capacity, max. stick length without quick coupler, lifted 360° on firm with blocked oscillating axle

¹⁾ comparable with SAE (heaped)

²⁾ Bucket with teeth ³⁾ Bucket with teeth in HD version ⁴⁾ Bucket with cutting edge (also available in HD version)

Max. material weight ■ = ≤ 3,034 lb/yd³, ■ = ≤ 2,528 lb/yd³, △ = ≤ 2,023 lb/yd³, - = not authorized

Lift capacities

with two-piece boom 19' HD

Stick 7'5"

ft	Undercarriage stabilized		10 ft		15 ft		20 ft		25 ft		30 ft		ft in
	rear	front											
30	Blade	Outriggers	-	-	-	-	-	-	-	-	-	-	16.1* 16.1*
	Outriggers	Outriggers	-	-	-	-	-	-	-	-	-	-	16.1* 16.1*
25	Blade	Outriggers	-	-	-	-	-	-	-	-	-	-	11.8 13.0*
	Outriggers	Outriggers	-	-	-	-	-	-	-	-	-	-	13.0* 13.0*
20	Blade	Outriggers	-	-	-	-	-	-	-	-	-	-	12.0* 12.0*
	Outriggers	Outriggers	-	-	-	-	-	-	-	-	-	-	12.0* 12.0*
15	Blade	Outriggers	-	-	-	-	-	-	-	-	-	-	11.7* 11.7*
	Outriggers	Outriggers	-	-	-	-	-	-	-	-	-	-	11.7* 11.7*
10	Blade	Outriggers	-	-	-	-	-	-	-	-	-	-	10.8 11.9*
	Outriggers	Outriggers	-	-	-	-	-	-	-	-	-	-	11.9* 11.9*
5	Blade	Outriggers	-	-	-	-	-	-	-	-	-	-	6.5 9.2
	Outriggers	Outriggers	-	-	-	-	-	-	-	-	-	-	10.5 12.0*
0	Blade	Outriggers	-	-	-	-	-	-	-	-	-	-	10.8 14.0*
	Outriggers	Outriggers	-	-	-	-	-	-	-	-	-	-	13.5 14.0*
-5	Blade	Outriggers	-	-	-	-	-	-	-	-	-	-	11.7 13.3*
	Outriggers	Outriggers	-	-	-	-	-	-	-	-	-	-	13.3* 13.3*
-10	Blade	Outriggers	-	-	-	-	-	-	-	-	-	-	8.6 11.5*
	Outriggers	Outriggers	-	-	-	-	-	-	-	-	-	-	11.5* 11.5*
-15	Blade	Outriggers	-	-	-	-	-	-	-	-	-	-	15.2 17.2*
	Outriggers	Outriggers	-	-	-	-	-	-	-	-	-	-	17.2* 17.2*

Stick 8'

ft	Undercarriage stabilized		10 ft		15 ft		20 ft		25 ft		30 ft		ft in
	rear	front											
30	Blade	Outriggers	-	-	-	-	-	-	-	-	-	-	14.6* 14.6*
	Outriggers	Outriggers	-	-	-	-	-	-	-	-	-	-	14.6* 14.6*
25	Blade	Outriggers	-	-	-	-	-	-	-	-	-	-	11.0 12.0*
	Outriggers	Outriggers	-	-	-	-	-	-	-	-	-	-	12.0* 12.0*
20	Blade	Outriggers	-	-	-	-	-	-	-	-	-	-	11.0* 11.0*
	Outriggers	Outriggers	-	-	-	-	-	-	-	-	-	-	11.0* 11.0*
15	Blade	Outriggers	-	-	-	-	-	-	-	-	-	-	10.8* 10.8*
	Outriggers	Outriggers	-	-	-	-	-	-	-	-	-	-	10.8* 10.8*
10	Blade	Outriggers	-	-	-	-	-	-	-	-	-	-	10.4 11.0*
	Outriggers	Outriggers	-	-	-	-	-	-	-	-	-	-	11.0* 11.0*
5	Blade	Outriggers	-	-	-	-	-	-	-	-	-	-	6.3 8.8
	Outriggers	Outriggers	-	-	-	-	-	-	-	-	-	-	10.1 11.6*
0	Blade	Outriggers	-	-	-	-	-	-	-	-	-	-	10.3 12.8*
	Outriggers	Outriggers	-	-	-	-	-	-	-	-	-	-	12.8* 12.8*
-5	Blade	Outriggers	-	-	-	-	-	-	-	-	-	-	11.2 13.0*
	Outriggers	Outriggers	-	-	-	-	-	-	-	-	-	-	13.0* 13.0*
-10	Blade	Outriggers	-	-	-	-	-	-	-	-	-	-	8.1 11.4*
	Outriggers	Outriggers	-	-	-	-	-	-	-	-	-	-	11.4* 11.4*
-15	Blade	Outriggers	-	-	-	-	-	-	-	-	-	-	13.0 15.0*
	Outriggers	Outriggers	-	-	-	-	-	-	-	-	-	-	15.0* 15.0*

Stick 8'8"

ft	Undercarriage stabilized		10 ft		15 ft		20 ft		25 ft		30 ft		ft in
	rear	front											
30	Blade	Outriggers	-	-	-	-	-	-	-	-	-	-	13.3* 13.3*
	Outriggers	Outriggers	-	-	-	-	-	-	-	-	-	-	13.3* 13.3*
25	Blade	Outriggers	-	-	-	-	-	-	-	-	-	-	10.3 11.0*
	Outriggers	Outriggers	-	-	-	-	-	-	-	-	-	-	11.0* 11.0*
20	Blade	Outriggers	-	-	-	-	-	-	-	-	-	-	10.2* 10.2*
	Outriggers	Outriggers	-	-	-	-	-	-	-	-	-	-	10.2* 10.2*
15	Blade	Outriggers	-	-	-	-	-	-	-	-	-	-	6.3 8.8
	Outriggers	Outriggers	-	-	-	-	-	-	-	-	-	-	10.0* 10.0*
10	Blade	Outriggers	-	-	-	-	-	-	-	-	-	-	10.1 10.1*
	Outriggers	Outriggers	-	-	-	-	-	-	-	-	-	-	10.1* 10.1*
5	Blade	Outriggers	-	-	-	-	-	-	-	-	-	-	6.0 8.5
	Outriggers	Outriggers	-	-	-	-	-	-	-	-	-	-	9.8 10.6*
0	Blade	Outriggers	-	-	-	-	-	-	-	-	-	-	10.6* 10.6*
	Outriggers	Outriggers	-	-	-	-	-	-	-	-	-	-	11.7* 11.7*
-5	Blade	Outriggers	-	-	-	-	-	-	-	-	-	-	6.6 9.3
	Outriggers	Outriggers	-	-	-	-	-	-	-	-	-	-	10.7 12.7*
-10	Blade	Outriggers	-	-	-	-	-	-	-	-	-	-	7.6 10.9
	Outriggers	Outriggers	-	-	-	-	-	-	-	-	-	-	11.2* 11.2*
-15	Blade	Outriggers	-	-	-	-	-	-	-	-	-	-	11.4 13.4*
	Outriggers	Outriggers	-	-	-	-	-	-	-	-	-	-	13.4* 13.4*

Stick 10'

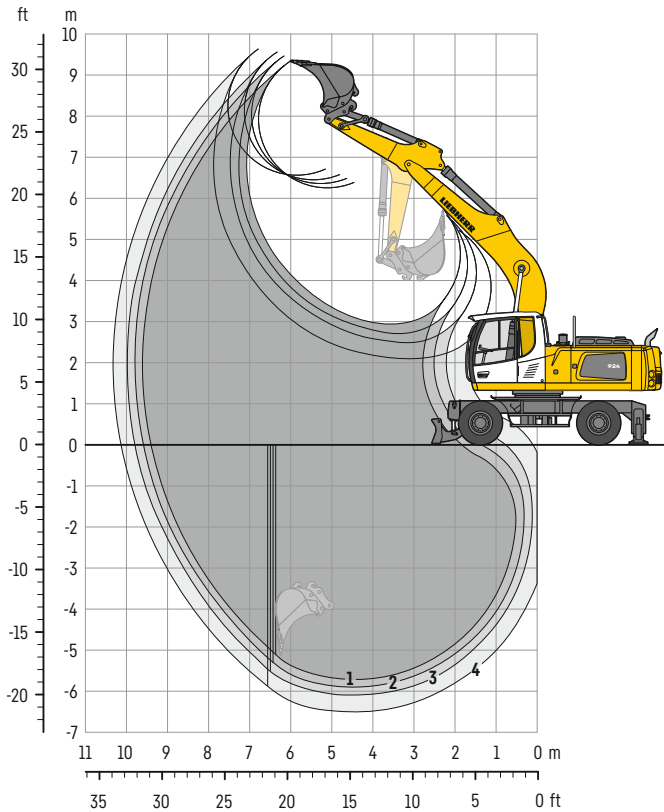
ft	Undercarriage stabilized		10 ft		15 ft		20 ft		25 ft		30 ft		ft in
	rear	front											
30	Blade	Outriggers	-	-	-	-	-	-	-	-	-	-	11.0* 11.0*
	Outriggers	Outriggers	-	-	-	-	-	-	-	-	-	-	11.0* 11.0*
25	Blade	Outriggers	-	-	-	-	-	-	-	-	-	-	9.3 9.4*
	Outriggers	Outriggers	-	-	-	-	-	-	-	-	-	-	9.4* 9.4*
20	Blade	Outriggers	-	-	-	-	-	-	-	-	-	-	8.8* 8.8*
	Outriggers	Outriggers	-	-	-	-	-	-	-	-	-	-	8.8* 8.8*
15	Blade	Outriggers	-	-	-	-	-	-	-	-	-	-	6.4 8.6*
	Outriggers	Outriggers	-	-	-	-	-	-	-	-	-	-	8.6* 8.6*
10	Blade	Outriggers	-	-	-	-	-	-	-	-	-	-	8.7* 8.7*
	Outriggers	Outriggers	-	-	-	-	-	-	-	-	-	-	8.7* 8.7*
5	Blade	Outriggers	-	-	-	-	-	-	-	-	-	-	6.0 8.4
	Outriggers	Outriggers	-	-	-	-	-	-	-	-	-	-	9.2* 9.2*
0	Blade	Outriggers	-	-	-	-	-	-	-	-	-	-	9.3 10.0*
	Outriggers	Outriggers	-	-	-	-	-	-	-	-	-	-	10.0* 10.0*
-5	Blade	Outriggers	-	-	-	-	-	-	-	-	-	-	6.0 8.6
	Outriggers	Outriggers	-	-	-	-	-	-	-	-	-	-	9.9 11.5*
-10	Blade	Outriggers	-	-	-	-	-	-	-	-	-	-	11.8* 11.8*
	Outriggers	Outriggers	-	-	-	-	-	-	-	-	-	-	11.8* 11.8*
-15	Blade	Outriggers	-	-	-	-	-	-	-	-	-	-	9.4 11.3*
	Outriggers	Outriggers	-	-	-	-	-	-	-	-	-	-	11.3* 11.3*

Height Can be slewed through 360° In longitudinal position of undercarriage Max. reach * Limited by hydr. capacity

With PowerLift 5,511 psi the lift capacities on the load hook of the Liebherr quick coupler SWA 48 without attachment are stated in lb x 1,000 and are valid on a firm, level supporting surface with blocked oscillating axle. These capacities can be slewed through 360° with the undercarriage in the transverse position. Capacities in the longitudinal position of the undercarriage ($\pm 15^\circ$) are specified over the steering axle with the stabilizers raised and over the rigid axle with the stabilizers down. The values apply when the adjusting cylinder is in the optimal position. Indicated loads based on the ISO 10567 standard and do not exceed 75% of tipping or 87% of hydraulic capacity, or are limited by the permissible load of the load hook on the quick coupler (max. 26,500 lb). Without the quick coupler, lift capacities will increase by up to 500 lb.

Backhoe bucket

with mono boom 18'6" HD



Digging envelope

with quick coupler		1	2	3	4
Stick length	ft in	7' 5"	8'	8'8"	10'
Max. digging depth	ft in	18' 8"	19'4"	20'	21'4"
Max. reach at ground level	ft in	30'10"	31'6"	32'2"	33'4"
Max. dumping height	ft in	20'10"	21'2"	21'6"	22'
Max. teeth height	ft in	30' 8"	31'	31'4"	31'8"
Min. equipment radius	ft in	12'10"	12'2"	11'4"	10'4"

Digging forces

without quick coupler		1	2	3	4
Max. digging force (ISO 6015)	lbf	33,384	31,406	29,652	26,707
Max. breakout force (ISO 6015)	lbf	38,128	38,128	38,128	38,128
	lb	38,140	38,140	38,140	38,140

Max. breakout force with ripper bucket 49,098 lbf (49,160 lb)

Operating weight

The operating weight includes the basic machine with 8 tires plus intermediate rings, mono boom 18'6" (HD), stick 8'8", quick coupler SWA 48 and bucket 4'7" / 1.77 yd³.

Undercarriage versions	Weight (lb)
A 924 Heavy Lift Litronic with rear blade + front outriggers	58,900
A 924 Heavy Lift Litronic with rear + front outriggers	59,500

Buckets Machine stability per ISO 10567* (75% of tipping capacity)

Cutting width ft in	Capacity ISO 7451 ¹⁾ yd ³	Weight lb	Stabilizers raised				Rear blade + front outriggers down				Rear + front outriggers down														
			Stick length (ft in)				Stick length (ft in)				Stick length (ft in)														
			7'5"	8'	8'8"	10'	7'5"	8'	8'8"	10'	7'5"	8'	8'8"	10'											
2' 9" ²⁾	0.98	1,367	■	■	■	■	■	■	■	■	■	■	■	■	■	■	■	■	■	■	■	■	■		
3' 5" ²⁾	1.24	1,565	■	■	■	■	■	■	■	■	■	■	■	■	■	■	■	■	■	■	■	■	■	■	
4' 1" ²⁾	1.50	1,786	■	■	■	■	■	■	■	■	■	■	■	■	■	■	■	■	■	■	■	■	■	■	■
4' 7" ²⁾	1.77	1,874	■	■	■	■	■	■	■	■	■	■	■	■	■	■	■	■	■	■	■	■	■	■	■
4' 11" ²⁾	1.90	1,940	■	■	■	■	■	■	■	■	■	■	■	■	■	■	■	■	■	■	■	■	■	■	■
5' 3" ²⁾	2.03	2,072	■	■	■	■	■	■	■	■	■	■	■	■	■	■	■	■	■	■	■	■	■	■	■
2' 9" ³⁾	0.98	1,521	■	■	■	■	■	■	■	■	■	■	■	■	■	■	■	■	■	■	■	■	■	■	■
3' 5" ³⁾	1.24	1,764	■	■	■	■	■	■	■	■	■	■	■	■	■	■	■	■	■	■	■	■	■	■	■
4' 1" ³⁾	1.50	2,006	■	■	■	■	■	■	■	■	■	■	■	■	■	■	■	■	■	■	■	■	■	■	■
4' 7" ³⁾	1.77	2,116	■	■	■	■	■	■	■	■	■	■	■	■	■	■	■	■	■	■	■	■	■	■	■
4' 11" ³⁾	1.90	2,205	■	■	■	■	■	■	■	■	■	■	■	■	■	■	■	■	■	■	■	■	■	■	■
5' 3" ³⁾	2.03	2,337	■	■	■	■	■	■	■	■	■	■	■	■	■	■	■	■	■	■	■	■	■	■	■
2' 9" ⁴⁾	1.05	1,389	■	■	■	■	■	■	■	■	■	■	■	■	■	■	■	■	■	■	■	■	■	■	■
3' 5" ⁴⁾	1.37	1,587	■	■	■	■	■	■	■	■	■	■	■	■	■	■	■	■	■	■	■	■	■	■	■
4' 1" ⁴⁾	1.70	1,764	■	■	■	■	■	■	■	■	■	■	■	■	■	■	■	■	■	■	■	■	■	■	■
4' 7" ⁴⁾	1.96	1,918	■	■	■	■	■	■	■	■	■	■	■	■	■	■	■	■	■	■	■	■	■	■	■
4' 11" ⁴⁾	2.16	1,962	■	■	■	■	■	■	■	■	■	■	■	■	■	■	■	■	■	■	■	■	■	■	■
5' 3" ⁴⁾	2.22	2,094	■	■	■	■	■	■	■	■	■	■	■	■	■	■	■	■	■	■	■	■	■	■	■

* Indicated loads are based on ISO 10567 and do not exceed 75% of tipping or 87% of hydraulic capacity, max. stick length without quick coupler, lifted 360° on firm with blocked oscillating axle

¹⁾ comparable with SAE (heaped)

²⁾ Bucket with teeth ³⁾ Bucket with teeth in HD version ⁴⁾ Bucket with cutting edge (also available in HD version)

Max. material weight ■ = ≤ 3,034 lb/yd³, ■ = ≤ 2,528 lb/yd³, △ = ≤ 2,023 lb/yd³, - = not authorized

Lift capacities

with mono boom 18'6" HD

Stick 7'5"

ft	Undercarriage stabilized		10 ft		15 ft		20 ft		25 ft		30 ft		ft in
	rear	front											
30	-	-											
	Blade	Outriggers											
	Outriggers	Outriggers											
25	-	-											
	Blade	Outriggers											
	Outriggers	Outriggers											
20	-	-											
	Blade	Outriggers											
	Outriggers	Outriggers											
15	-	-											
	Blade	Outriggers											
	Outriggers	Outriggers											
10	-	-											
	Blade	Outriggers											
	Outriggers	Outriggers											
5	-	-											
	Blade	Outriggers											
	Outriggers	Outriggers											
0	-	-											
	Blade	Outriggers											
	Outriggers	Outriggers											
-5	-	-											
	Blade	Outriggers											
	Outriggers	Outriggers											
-10	-	-											
	Blade	Outriggers											
	Outriggers	Outriggers											
-15	-	-											
	Blade	Outriggers											
	Outriggers	Outriggers											

Stick 8"

ft	Undercarriage stabilized		10 ft		15 ft		20 ft		25 ft		30 ft		ft in
	rear	front											
30	-	-											
	Blade	Outriggers											
	Outriggers	Outriggers											
25	-	-											
	Blade	Outriggers											
	Outriggers	Outriggers											
20	-	-											
	Blade	Outriggers											
	Outriggers	Outriggers											
15	-	-											
	Blade	Outriggers											
	Outriggers	Outriggers											
10	-	-											
	Blade	Outriggers											
	Outriggers	Outriggers											
5	-	-											
	Blade	Outriggers											
	Outriggers	Outriggers											
0	-	-											
	Blade	Outriggers											
	Outriggers	Outriggers											
-5	-	-											
	Blade	Outriggers											
	Outriggers	Outriggers											
-10	-	-											
	Blade	Outriggers											
	Outriggers	Outriggers											
-15	-	-											
	Blade	Outriggers											
	Outriggers	Outriggers											

Stick 8'8"

ft	Undercarriage stabilized		10 ft		15 ft		20 ft		25 ft		30 ft		ft in
	rear	front											
30	-	-											
	Blade	Outriggers											
	Outriggers	Outriggers											
25	-	-											
	Blade	Outriggers											
	Outriggers	Outriggers											
20	-	-											
	Blade	Outriggers											
	Outriggers	Outriggers											
15	-	-											
	Blade	Outriggers											
	Outriggers	Outriggers											
10	-	-											
	Blade	Outriggers											
	Outriggers	Outriggers											
5	-	-											
	Blade	Outriggers											
	Outriggers	Outriggers											
0	-	-											
	Blade	Outriggers											
	Outriggers	Outriggers											
-5	-	-											
	Blade	Outriggers											
	Outriggers	Outriggers											
-10	-	-											
	Blade	Outriggers											
	Outriggers	Outriggers											
-15	-	-											
	Blade	Outriggers											
	Outriggers	Outriggers											

Stick 10"

ft	Undercarriage stabilized		10 ft		15 ft		20 ft		25 ft		30 ft		ft in
	rear	front											
30	-	-											
	Blade	Outriggers											
	Outriggers	Outriggers											
25	-	-											
	Blade	Outriggers											
	Outriggers	Outriggers											
20	-	-											
	Blade	Outriggers											
	Outriggers	Outriggers											
15	-	-											
	Blade	Outriggers											
	Outriggers	Outriggers											
10	-	-											
	Blade	Outriggers											
	Outriggers	Outriggers											
5	-	-											
	Blade	Outriggers											
	Outriggers	Outriggers											
0	-	-											
	Blade	Outriggers											
	Outriggers	Outriggers											
-5	-	-											
	Blade	Outriggers											
	Outriggers	Outriggers											
-10	-	-											
	Blade	Outriggers											
	Outriggers	Outriggers											
-15	-	-											
	Blade	Outriggers											
	Outriggers	Outriggers											

Height Can be slewed through 360° In longitudinal position of undercarriage Max. reach * Limited by hydr. capacity

With PowerLift 5,511 psi the lift capacities on the load hook of the Liebherr quick coupler SWA 48 without attachment are stated in metric tons (t) and are valid on a firm, level supporting surface with blocked oscillating axle. These capacities can be slewed through 360° with the undercarriage in the transverse position. Capacities in the longitudinal position of the undercarriage (=15°) are specified over the steering axle with the stabilizers raised and over the rigid axle with the stabilizers down. Indicated loads based on the ISO 10567 standard and do not exceed 75% of tipping or 87% of hydraulic capacity, or are limited by the permissible load of the load hook on the quick coupler (max. 26,500 lb). Without the quick coupler, lift capacities will increase by up to 500 lb.

Equipments

Ditch cleaning buckets

Ditch cleaning buckets Machine stability per ISO 10567* (75% of tipping capacity)

Cutting width ft in	Capacity ISO 7451 ¹⁾ yd ³	Weight lb	Stabilizers raised				Rear blade + front outriggers down				Rear + front outriggers down			
			Stick length (ft in)				Stick length (ft in)				Stick length (ft in)			
			7'5"	8'	8'8"	10'	7'5"	8'	8'8"	10'	7'5"	8'	8'8"	10'
Two-piece boom 19' HD														
4'11" ³⁾	0.65	948	■	■	■	■	■	■	■	■	■	■	■	■
5' 3" ²⁾	1.05	1,874	■	■	■	■	■	■	■	■	■	■	■	■
6' 7" ²⁾	0.65	1,521	■	■	■	■	■	■	■	■	■	■	■	■
6' 7" ³⁾	0.92	1,146	■	■	■	■	■	■	■	■	■	■	■	■
6' 7" ²⁾	0.92	1,940	■	■	■	■	■	■	■	■	■	■	■	■
6' 7" ³⁾	1.57	1,411	■	■	■	■	■	■	■	■	■	■	■	■
6' 7" ²⁾	1.31	2,072	■	■	■	■	■	■	■	■	■	■	■	■
7' 3" ²⁾	1.05	1,940	■	■	■	■	■	■	■	■	■	■	■	■
7' 3" ²⁾	1.50	2,161	■	■	■	■	■	■	■	■	■	■	■	■
7' 3" ²⁾	1.83	2,205	■	■	■	△	■	■	■	■	■	■	■	■
7'10" ²⁾	1.11	1,962	■	■	■	■	■	■	■	■	■	■	■	■
7'10" ³⁾	1.11	1,345	■	■	■	■	■	■	■	■	■	■	■	■
7'10" ³⁾	1.63	2,205	■	■	■	■	■	■	■	■	■	■	■	■
Mono boom 18'6" HD														
4'11" ³⁾	0.65	948	■	■	■	■	■	■	■	■	■	■	■	■
5' 3" ²⁾	1.05	1,874	■	■	■	■	■	■	■	■	■	■	■	■
6' 7" ²⁾	0.65	1,521	■	■	■	■	■	■	■	■	■	■	■	■
6' 7" ³⁾	0.92	1,146	■	■	■	■	■	■	■	■	■	■	■	■
6' 7" ²⁾	0.92	1,940	■	■	■	■	■	■	■	■	■	■	■	■
6' 7" ³⁾	1.57	1,411	■	■	■	■	■	■	■	■	■	■	■	■
6' 7" ²⁾	1.31	2,072	■	■	■	■	■	■	■	■	■	■	■	■
7' 3" ²⁾	1.05	1,940	■	■	■	■	■	■	■	■	■	■	■	■
7' 3" ²⁾	1.50	2,161	■	■	■	■	■	■	■	■	■	■	■	■
7' 3" ²⁾	1.83	2,205	■	■	■	■	■	■	■	■	■	■	■	■
7'10" ²⁾	1.11	1,962	■	■	■	■	■	■	■	■	■	■	■	■
7'10" ³⁾	1.11	1,345	■	■	■	■	■	■	■	■	■	■	■	■
7'10" ³⁾	1.63	2,205	■	■	■	■	■	■	■	■	■	■	■	■

* Indicated loads are based on ISO 10567 and do not exceed 75% of tipping or 87% of hydraulic capacity, max. stick length without quick coupler, lifted 360° on firm with blocked oscillating axle

¹⁾ comparable with SAE (heaped)

²⁾ with 2 x 50° rotator

³⁾ rigid ditch cleaning bucket

Max. material weight ■ = ≤ 3,034 lb/yd³, ■ = ≤ 2,528 lb/yd³, △ = ≤ 2,023 lb/yd³, - = not authorized

Equipments

Tilt buckets

Tilt buckets Machine stability per ISO 10567* (75% of tipping capacity)

Cutting width ft in	Capacity ISO 7451 ¹⁾ yd ³	Weight lb	Stabilizers raised				Rear blade + front outriggers down				Rear + front outriggers down			
			Stick length (ft in)				Stick length (ft in)				Stick length (ft in)			
			7'5"	8'	8'8"	10'	7'5"	8'	8'8"	10'	7'5"	8'	8'8"	10'
Two-piece boom 19' HD														
4'11" ²⁾	1.57	2,138	■	■	■	■	■	■	■	■	■	■	■	
5' 3" ²⁾	1.05	1,808	■	■	■	■	■	■	■	■	■	■	■	
5' 3" ²⁾	1.31	1,962	■	■	■	■	■	■	■	■	■	■	■	
5' 3" ²⁾	1.77	2,138	■	■	■	■	■	■	■	■	■	■	■	
5' 3" ²⁾	2.03	2,491	■	■	△	△	■	■	■	■	■	■	■	
Mono boom 18'6" HD														
4'11" ²⁾	1.57	2,138	■	■	■	■	■	■	■	■	■	■	■	
5' 3" ²⁾	1.05	1,808	■	■	■	■	■	■	■	■	■	■	■	
5' 3" ²⁾	1.31	1,962	■	■	■	■	■	■	■	■	■	■	■	
5' 3" ²⁾	1.77	2,138	■	■	■	■	■	■	■	■	■	■	■	
5' 3" ²⁾	2.03	2,491	■	■	■	△	■	■	■	■	■	■	■	

* Indicated loads are based on ISO 10567 and do not exceed 75% of tipping or 87% of hydraulic capacity, max. stick length without quick coupler, lifted 360° on firm with blocked oscillating axle

¹⁾ comparable with SAE (heaped)

²⁾ with 2 x 50° rotator

Max. material weight ■ = ≤ 3,034 lb/yd³, ■ = ≤ 2,528 lb/yd³, △ = ≤ 2,023 lb/yd³, - = not authorized

Equipment

Undercarriage

Dual-circuit braking system	•
Rear stabilizer blade + front outriggers	+
Digging brake, automatic	•
Tires (twin tires) Mitas EM 22	•
Individual control outriggers	+
Travel speed levels (four)	•
Load holding valve on each stabilization cylinder	•
Powershift transmission, semiautomatic	•
Parking brake, maintenance-free	•
Shuttle axle lock, automatic	•
Rear outriggers + front stabilizer blade	+
Rear + front outriggers	+
Tires, variants	+
Protection for piston rods, stabilizer cylinder	+
Storage compartment left	•
Storage compartment right	+
Undercarriage EW 9'	•
Tool equipment, extended	+

Uppercarriage

Uppercarriage rear light, 2 pieces, LED	+
Uppercarriage right side light, 1 piece, LED	+
Refuelling system with filling pump	+
Main battery switch for electrical system	•
Engine hood with gas spring	•
Amber beacon, at uppercarriage, LED double flash	+
Service doors, lockable	•

Hydraulic system

Shut-off valve between hydraulic tank and pump(s)	•
Pressure test fittings	•
Accumulator for controlled lowering of the equipment with the engine shut down	•
Hydraulic oil filter with integrated microfilter	•
Liebherr hydraulic oil from -4°F to +104°F	•
Liebherr hydraulic oil, biologically degradable	+
Liebherr hydraulic oil, specially for warm or cold regions	+
Bypass filter	+
PowerLift	•
Switchover high pressure circuit and tipping cylinder	+
Switchover high pressure circuit and two-piece boom	+

Diesel engine

Fuel anti-theft device	+
Liebherr particle filter*	+
Reversible fan drive, fully automatic	+
Air pre-filter with dust discharge	+
Automatic engine shut-down (time adjustable)	+
Preheating fuel	+

Cab

Storage compartment	•
Stabilizer, proportional control on left joystick	•
Cab lights rear, LED	+
Cab lights front, halogen (under rain cover)	•
Cab lights front, LED (above rain cover)	+
Cab lights front, LED (under rain cover)	+
Exterior mirror, electrical adjustable, with heating	+
Mechanical hour meters, readable from outside the cab	•
Roof window made from impact-resistant laminated safety glass	+
Slewing gear brake Comfort, button on the left or right joystick	+
Slewing gear brake, rocker switch in the right joystick	•
Operator's seat Standard	•
Operator's seat Comfort	+
Operator's seat Premium	+
Driving alarm (acoustic signal is emitted during travel, can be switched ON / OFF)	+
Fire extinguisher	+
Front screen made from impact-resistant laminated safety glass - not adjustable	+
Windscreen retractable (including upper part)	•
Intermittent windscreen wiper with wiper washer	•
Cruise control	•
Rubber floor mat, removable	•
Dome light	•
Joystick steering	+
Joysticks Premium	+
Coat hook	•
Automatic air conditioning	•
Fuel consumption indicator	•
Electric cooler	+
Steering wheel, wide version (cost-neutral option)	+
Steering column adjustable horizontally	•
LiDAT, vehicle fleet management	•
Emergency exit rear window	•
Positioning swing brake	+
Proportional control	•
Radio Comfort, control via display with handsfree set	+
Preparation for radio installation	•
Rain cover over front window opening	•
ROPS cab protection	•
Back-up alarm (acoustic signal is emitted traveling backward, can not be switched off)	+
Amber beacon, on cab, LED double flash	+
Tinted windows	•
Windscreen wiper, roof	+
Windshield wiper, entire windshield	•
Door with sliding window	•
FOPS top guard	+
FGPS front guard	+
Right side window and windshield made from laminated safety glass	•
Sun visor	+
Sun blind	•
Auxiliary heating, adjustable (week time switch)	+
Left control console, folding	•
Electronic immobilizer	+
Cigarette lighter	•



Equipment

Boom lights, 2 pieces, halogen	●
Boom lights, 2 pieces, LED	+
Stick lights, 2 pieces, LED	+
High pressure circuit incl. unpressurized return line and Tool Control	+
Electronic lift limitation	●
Security for hoist cylinder for hydraulic attachments	+
Load holding valve tipping cylinder	+
Load lug on stick	+
Leak oil line, additional for attachments	+
Liebherr ditch cleaning bucket	+
Liebherr quick coupler, hydraulic or mechanical	+
Liebherr tilt bucket	+
Liebherr tiltrotator	+
Liebherr sorting grab	+
Liebherr backhoe bucket	+
Liebherr tooth system	+
Liebherr clamshell grab	+
Medium pressure circuit incl. lines	+
Mono boom, HD version	+
Pipe fracture safety valves hoist cylinders	●
Pipe fracture safety valve stick cylinder	●
Return line, pressureless (in high pressure circuit option included)	+
Hose quick coupling at end of stick	●
Quick coupling system Solidlink	+
Protection for bottom side of stick	+
Tool Control, 20 attachment adjustments selectable over the display	+
Overload warning device	●
Two-piece boom, HD version	+



Complete machine

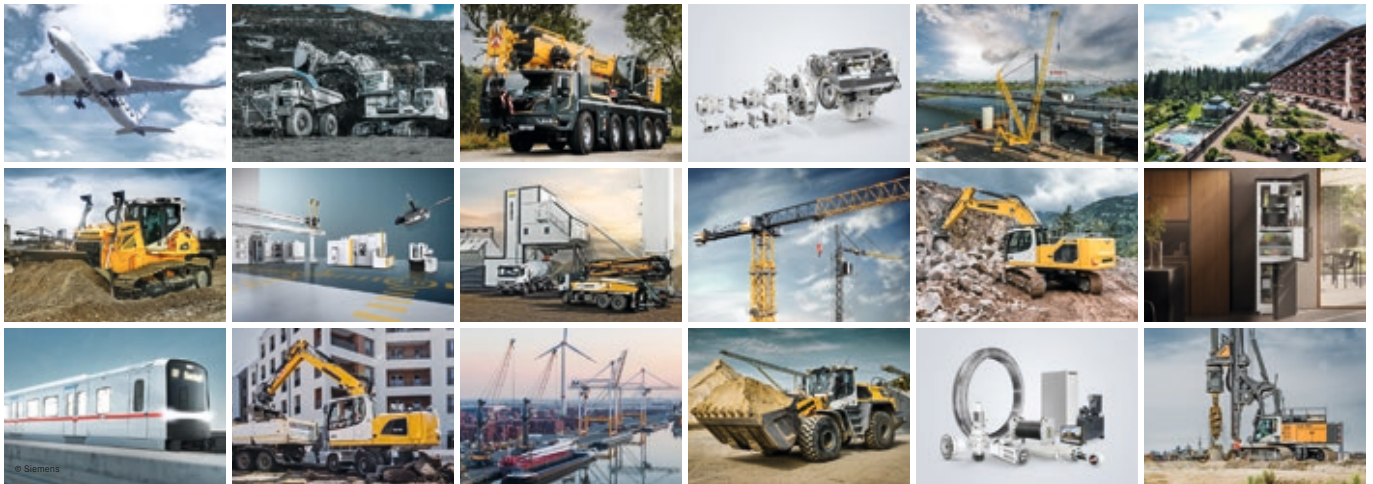
Lubrication	
Lubrication undercarriage, manually - decentralized (grease points)	●
Lubrication undercarriage, manually - centralized (one grease point)	+
Central lubrication system for uppercarriage and equipment, automatically (without quick coupler and connecting link)*	●
Centralized lubrication extended for quick coupler	+
Centralized lubrication extended for connecting link	+
Special coating	
Custom painting for attachments	+
Special coating, variants	+
Monitoring	
Rear view monitoring with camera	●
Side view monitoring with camera	●
Skyview 360° (side camera not available)	+

● = Standard, + = Option

* = country-dependent

Options and /or special equipment, supplied by vendors other than Liebherr, are only to be installed with the knowledge and approval of Liebherr in order to retain warranty.

The Liebherr Group



Global and independent: more than 70 years of success

Liebherr was founded in 1949. With the development of the world's first mobile tower crane, Hans Liebherr laid the foundations of a successful family-run company which today comprises more than 150 companies on all continents with over 50,000 employees. The holding company of the Group is Liebherr-International AG in Bulle (Switzerland), whose shareholders are exclusively members of the Liebherr family.

Technology leadership and pioneering spirit

Liebherr regards itself as a pioneer. This spirit has enabled the company to make a decisive contribution to the technological history of many industries. Today, employees around the world still share the courage of the company founder to take new paths. They are all united by a passion for technology and fascinating products and the determination to perform outstanding work for their customers.

Widely diversified product program

Not only is Liebherr one of the biggest construction machine manufacturers in the world, it also provides high-quality, user-oriented products and services in a wide range of other areas. The product program includes the segments earthmoving machinery, material handling technology, deep foundation machines, mining, mobile and crawler cranes, tower cranes, concrete technology, maritime cranes, aerospace and transportation systems, gear technology and automation systems, refrigerators and freezers, components and hotels.

Customized solutions and maximum customer value

Liebherr solutions are characterized by maximum precision, outstanding implementation and exceptional longevity. Its mastery of key technologies enables the company to offer its customers customized solutions. For Liebherr, customer focus does not end with the product; it also encompasses a wide range of services that make a real difference.

www.liebherr.us

WARNING

Breathing diesel engine exhaust exposes you to chemicals known to the State of California to cause cancer and birth defects or other reproductive harm.

- Always start and operate the engine in a well-ventilated area.
- If in an enclosed area, vent the exhaust to the outside.
- Do not modify or tamper with exhaust system.
- Do not idle the engine except as necessary.

For more information go to www.P65warnings.ca.gov/diesel.

WARNING

This product can expose you to chemicals including lead and lead compounds, which are known to the State of California to cause cancer and birth defects or other reproductive harm.

For more information go to www.P65warnings.ca.gov.

Liebherr USA, Co.

Construction Equipment Division • 4800 Chestnut Avenue • Newport News, VA 23607, USA • Phone +1 (757) 240 4250
construction.usa@liebherr.com • www.liebherr.us • www.facebook.com/LiebherrConstruction