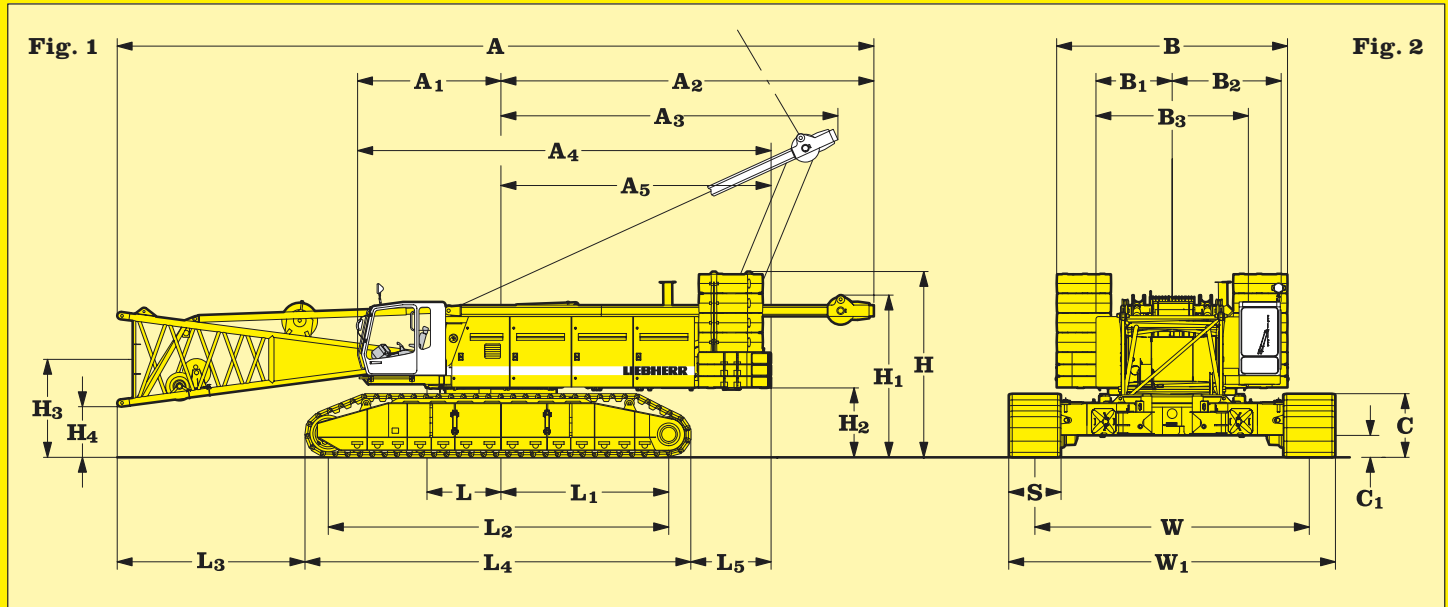


# Technical Data Hydraulic lift crane

# LR 1250

Litronic®  
Complies with ANSI B 30.5

## Basic machine with undercarriage



**Fig. 1: Dimensions in \_\_\_\_\_ ft**

<b>A</b> Overall length of superstructure with lowered A-frame and boom foot	57' 5"
<b>A<sub>1</sub></b> Centre of rotation - front edge of cabin	10' 10"
<b>A<sub>2</sub></b> Tail swing - lowered A-frame	28' 1"
<b>A<sub>3</sub></b> Max. tail swing - A-frame in working position	25' 5"
<b>A<sub>4</sub></b> Length of superstructure	31' 2"
<b>A<sub>5</sub></b> Centre rotation - rear counterweight	20' 4"

<b>H</b> Height over counterweight	14' 1"
<b>H<sub>1</sub></b> Height over lowered A-frame	12' 7"
<b>H<sub>2</sub></b> Ground clearance of superstructure	5' 3"
<b>H<sub>3</sub></b> Ground clearance of boom foot pivot	7' 5"
<b>H<sub>4</sub></b> Ground clearance of horizontal boom foot	3' 10"

<b>L</b> Centre of rotation - boom foot pivot	5' 7"
<b>L<sub>1</sub></b> Centre of rotation - centre of tumbler	12' 8"
<b>L<sub>2</sub></b> Wheel base (centre idler to centre tumbler)	25' 11"
<b>L<sub>3</sub></b> Distance from edge of horizontal boom foot to crawler	14' 1"
<b>L<sub>4</sub></b> Length of crawlers	29' 8"
<b>L<sub>5</sub></b> Distance between rear end of crawler and outside of counterweight	5' 4"

**Fig. 2: Dimensions in \_\_\_\_\_ ft**

<b>B</b> Width of counterweight	18' 0"
<b>B<sub>1</sub></b> Centre of rotation - outside of superstructure	5' 9"
<b>B<sub>2</sub></b> Centre of rotation - outside of cabin in working position	8' 2"
<b>B<sub>3</sub></b> Width of superstructure	11' 6"
<b>C</b> Height of crawlers	4' 10"
<b>C<sub>1</sub></b> Ground clearance of undercarriage	20"
<b>S</b> Width of track shoes	48"
<b>W</b> Track width of undercarriage	20' 8"
<b>W<sub>1</sub></b> Width of undercarriage	24' 7"

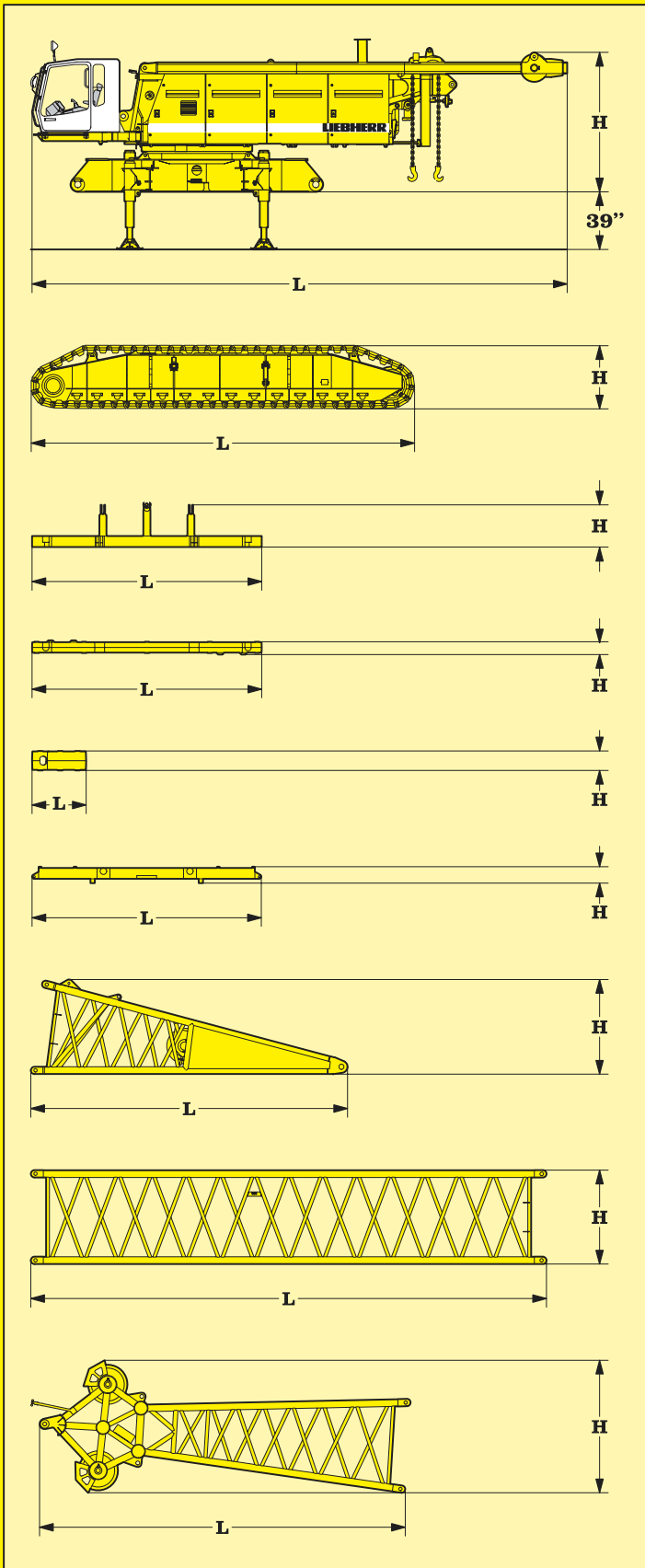
### Operating Weight and Ground Pressure

The operating weight includes the basic machine with crawler tracks, 2 main winches 33,100 lbs single working line pull each and 76 ft main boom, consisting of A-frame, boom foot (23 ft), boom head (23 ft), boom extension (10 ft), boom extension (20 ft) 166,000 lbs basic counterweight and 59,500 lbs carbody counterweight and 232 US t hook block.

with 48" flat track shoes 435,500 lbs - 14,93 lbs/sq.in.

# LIEBHERR

The Better Machine.



\*) Including pendants

### Basic machine

with A-frame and 2x 33,100 lbs winches, without boom foot, basic counterweight, crawlers and carbody counterweight

Width	11' 6"
L Length	42' 2"
H Height	10' 8"
Weight in lbs	92,000

### Crawler

flat track shoes	2x 48"
Width	4' 9"
L Length	29' 8"
H Height	4' 10"
Weight in lbs ea.	45,200

### Counterweight

Width	5' 5"
L Length	18' 0"
H Height	43"
Weight in lbs	27,800

### Counterweight

Width	5' 5"
L Length	18' 0"
H Height	13"
Weight in lbs ea.	23,400

### Counterweight

Width	4' 6"
L Length	4' 10"
H Height	20"
Weight in lbs each	11,250

### Carbody counterweight

Width	2x 46"
L Length	16' 5"
H Height	15"
Weight in lbs ea.	29,800

### Boom foot

Width	7' 11"
L Length	24' 1"
H Height	7' 3"
Weight in lbs	10,140

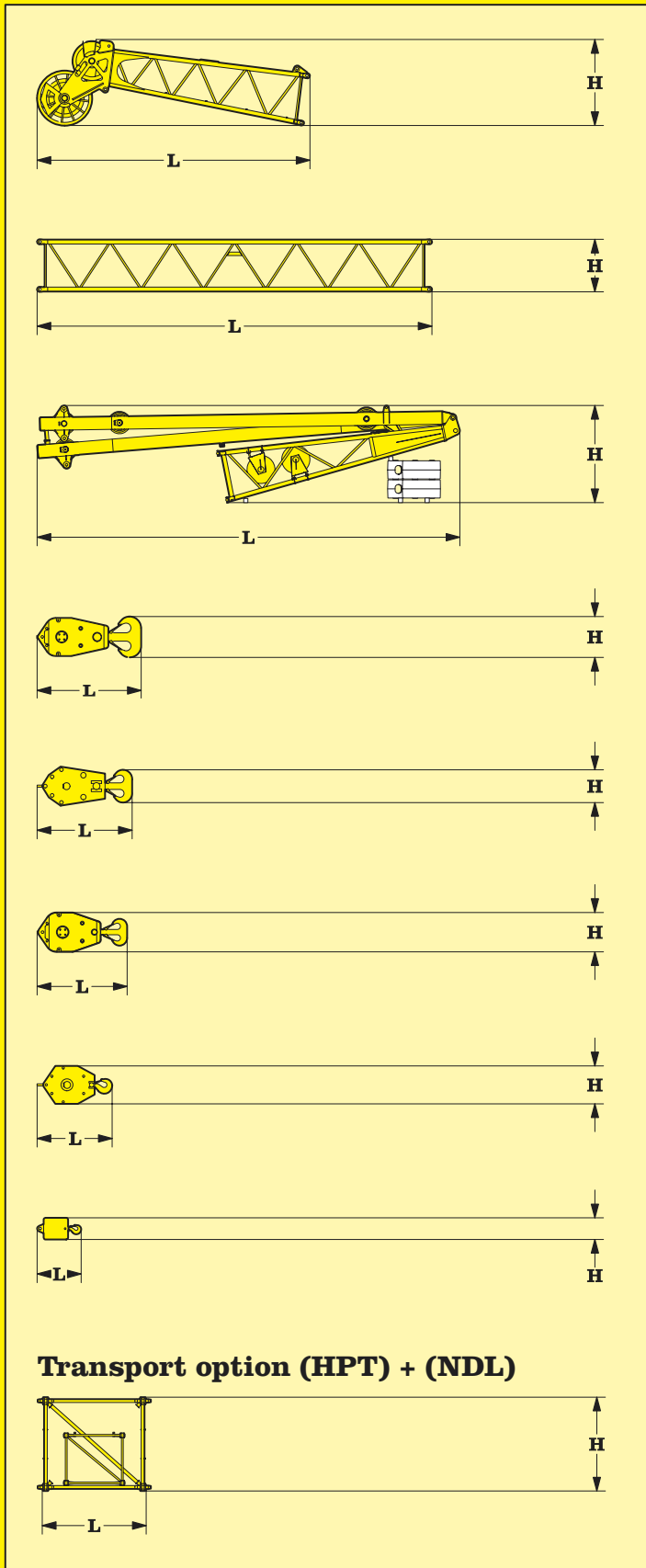
### Tubular

boom extension	10 ft	20 ft	38 ft
Width	7' 11"	7' 11"	7' 11"
L Length	10' 8"	20' 6"	39' 3"
H Height	7' 8"	7' 8"	7' 8"
Weight in lbs ea.*	2,500	4,200	6,300

### Boom head

Width	7' 11"
L Length	27' 11"
H Height	10' 0"
Weight in lbs*	9,500

# Transport dimensions and weights



\*) Including pendants

**Jib head (NDL)**

Width	4' 7"
L Length	20' 8"
H Height	6' 7"
Weight in lbs	3,000

**Tubular jib extension (NDL)**

	10 ft	30 ft
Width	4' 7"	4' 7"
L Length	10' 4"	30' 0"
H Height	4' 0"	4' 0"
Weight in lbs each*	970	2,300

**Jib foot (NDL) with A-frames**

Width	4' 8"
L Length	32' 2"
H Height	8' 0"
Weight in lbs	10,800

**232 US t hook block - 9 sheaves**

Width	48"
L Length	7' 10"
H Height	35"
Weight in lbs	12,100

**165 US t hook block - 5 sheaves**

Width	30"
L Length	7' 0"
H Height	35"
Weight in lbs	8,800

**110 US t hook block - 3 sheaves**

Width	27"
L Length	6' 7"
H Height	35"
Weight in lbs	7,300

**50 US t hook block - 1 sheaves**

Width	21"
L Length	5' 9"
H Height	35"
Weight in lbs	5,500

**18 US t single hook**

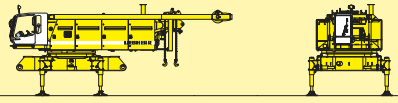
Width	20"
L Length	35"
H Height	20"
Weight in lbs	2,000

**Boom - jib transport option**

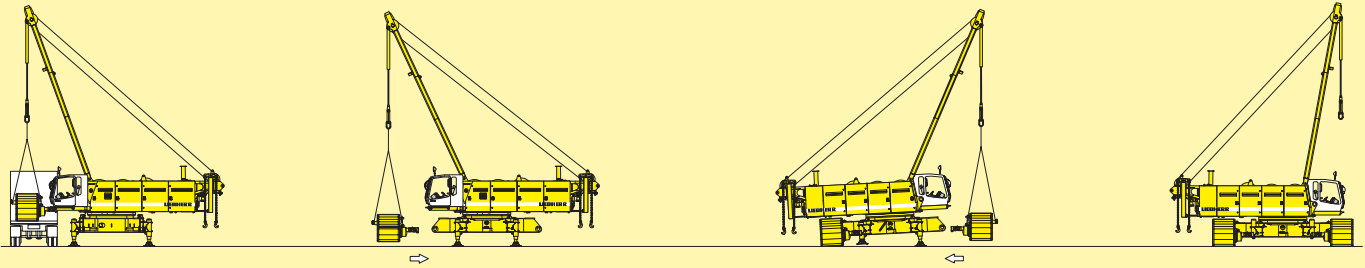
- 38 ft main - and 30 ft jib extension
- 20 ft main - and 10 ft jib extension
- 10 ft main - and 10 ft jib extension

HPT/NDL	38'/30'	20'/10'	10'/10'
Width	8' 0"	8' 0"	8' 0"
L Length	39' 3"	20' 6"	10' 8"
H Height	7' 8"	7' 8"	7' 8"
Weight in lbs * 38 ft main and 30 ft jib	8,400		
Weight in lbs * 20 ft main and 10 ft jib	5,200		
Weight in lbs * 10 ft main and 10 ft jib	3,500		

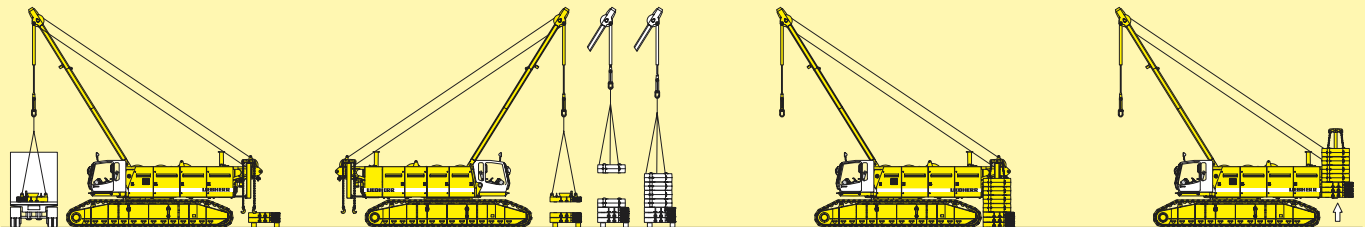
**Transport dimensions and weights**



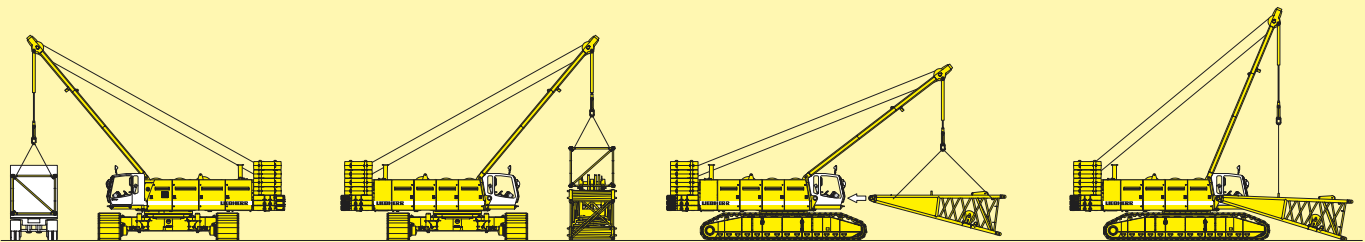
**Unloading of basic machine and swinging out of cabin**



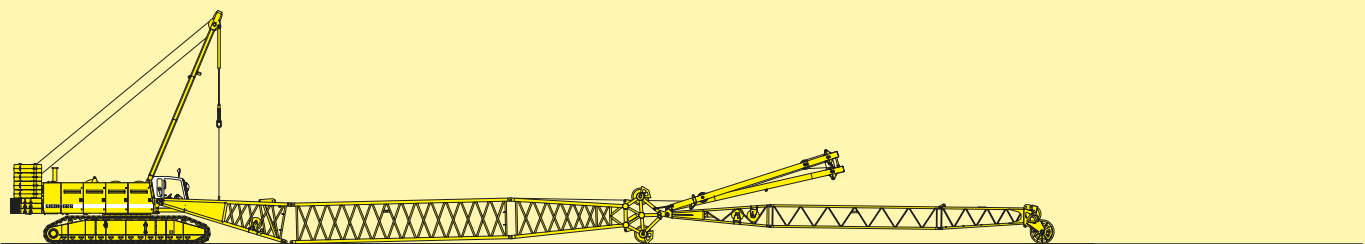
**Unloading and assembly of crawlers**



**Unloading and assembly of counterweight**

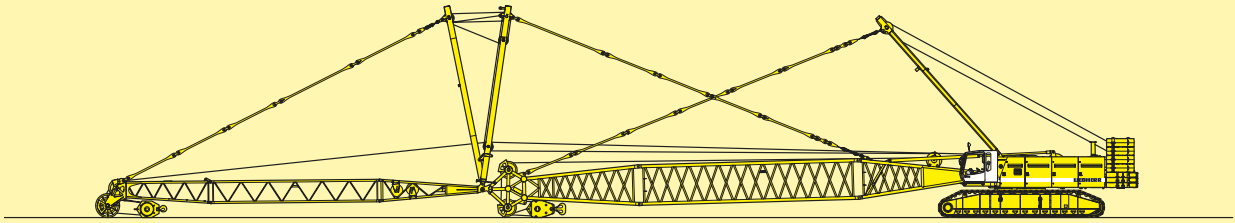


**Unloading and assembly of boom - Assembly of boom foot**

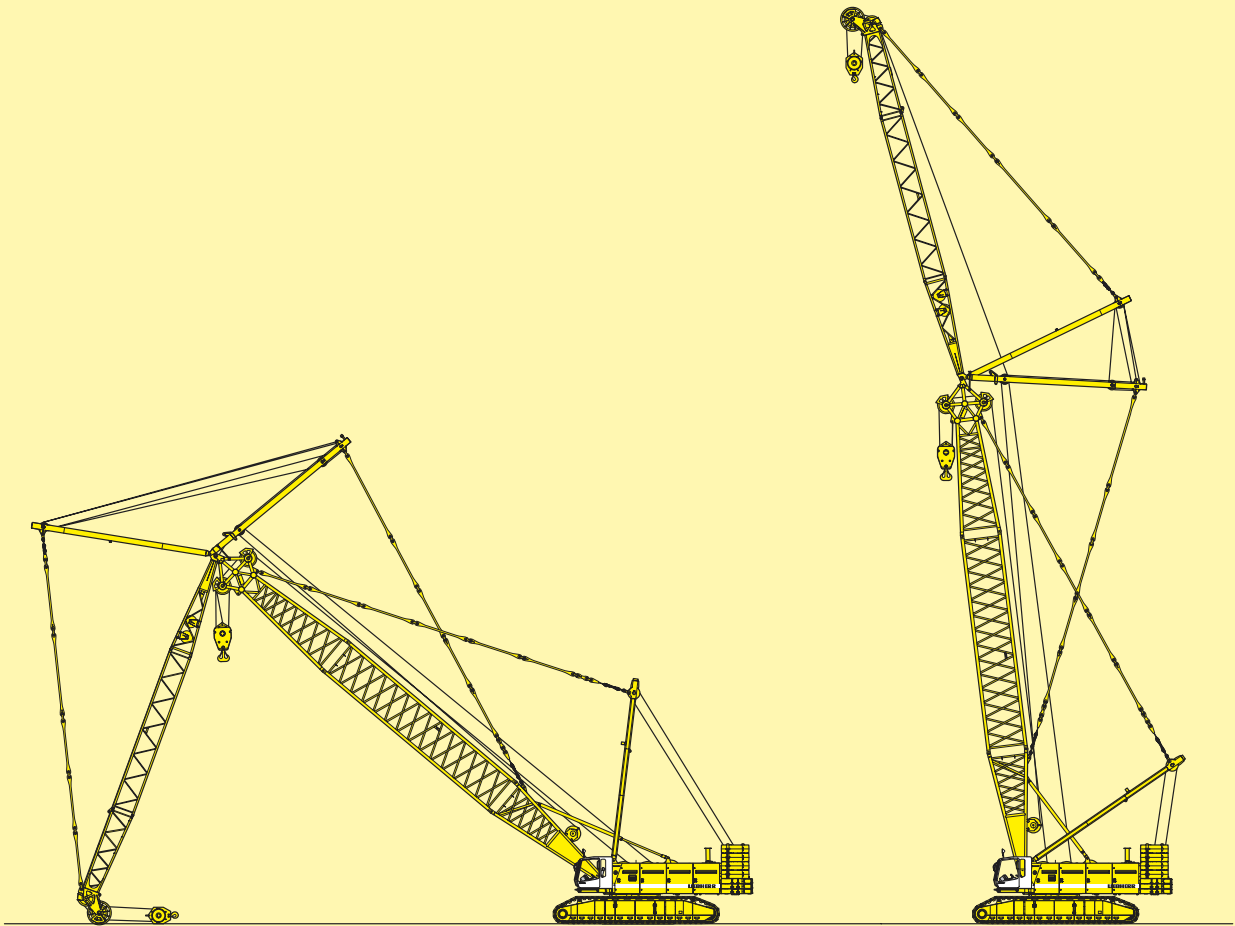


**Assembly of boom and reeving of hoist and jib ropes**

# Self assembly system



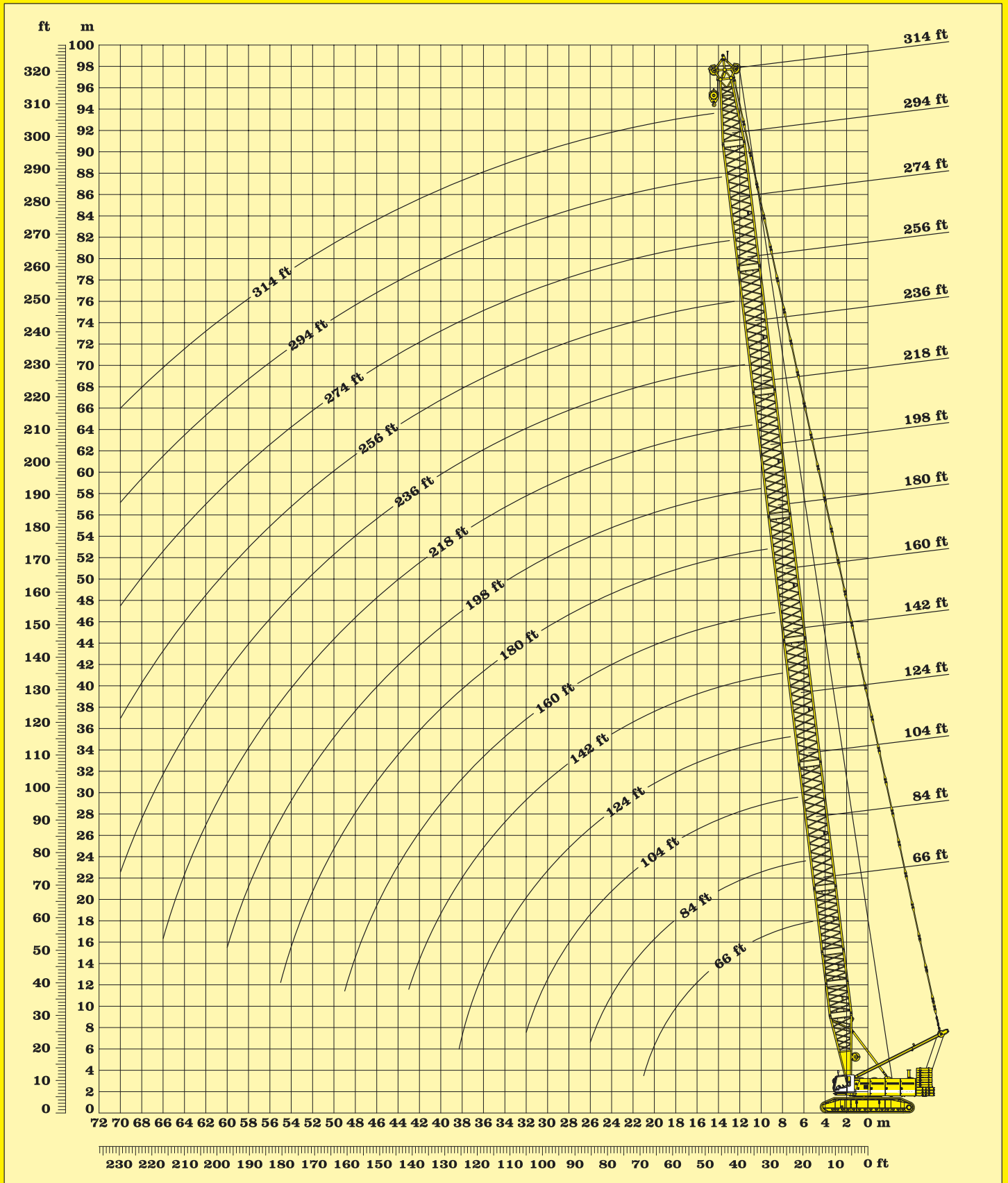
**Luffing of boom**



**Luffing of jib**

**Working position**

# **Booming up - crane in working position**



## Working range - main boom

Capacities in metric tons for boom length (HPT) between 66 ft and 314 ft: 166000 lbs counterweight and 59500 lbs carbody counterweight															
Boom length (HPT)	66 ft	84 ft	104 ft	122 ft	142 ft	160 ft	180 ft	198 ft	208 ft	218 ft	236 ft	256 ft	274 ft	294 ft	314 ft
Radius in (ft)	t	t	t	t	t	t	t	t	t	t	t	t	t	t	t
20	440.9	377.5	337.0												
25	358.3	331.5	306.5	279.2	242.5										
30	283.5	266.2	248.7	234.4	220.6	201.0	178.2	150.3							
35	222.3	221.2	208.4	197.8	187.1	177.8	169.3	149.9	142.8	131.0	110.2				
40	181.6	182.0	178.6	170.3	161.7	154.2	147.4	140.8	136.6	129.3	110.0	97.9	80.1	69.9	
45	152.8	153.1	152.4	149.0	141.9	135.6	130.1	124.8	121.6	118.8	109.0	97.2	79.8	69.9	61.5
50	131.4	131.6	130.8	130.6	125.9	120.7	115.8	111.3	108.7	106.0	101.8	94.6	78.8	69.4	61.2
55	114.8	115.0	114.1	113.8	112.8	108.3	104.1	100.1	97.7	95.3	91.8	87.5	77.0	68.2	60.2
60	101.7	101.8	100.9	100.6	99.7	97.8	94.2	90.6	88.4	86.3	83.2	79.2	74.7	66.6	58.9
65	91.1	91.1	90.1	89.7	88.8	88.2	85.6	82.5	80.5	78.5	75.7	71.9	69.4	64.5	57.7
70		82.2	81.1	80.7	79.8	79.1	78.3	75.4	73.5	71.7	69.1	65.6	63.3	59.9	56.1
75		74.7	73.6	73.2	72.2	71.5	71.3	69.2	67.4	65.7	63.3	60.0	57.9	54.8	51.7
80		68.4	67.2	66.7	65.7	65.0	64.7	63.7	62.0	60.4	58.2	55.1	53.1	50.2	47.2
85		62.9	61.7	61.1	60.1	59.3	59.0	58.6	57.3	55.7	53.7	50.7	48.8	46.0	43.1
90			56.9	56.3	55.2	54.4	54.1	53.6	52.9	51.5	49.5	46.7	45.0	42.2	39.5
95			52.7	52.0	50.9	50.1	49.7	49.2	48.6	47.7	45.9	43.1	41.5	38.8	36.1
100			49.1	48.3	47.1	46.3	45.9	45.3	44.7	44.1	42.5	39.8	38.3	35.7	33.1
105			45.9	44.9	43.7	42.9	42.4	41.9	41.2	40.6	39.4	36.8	35.3	32.9	30.3
110				42.0	40.7	39.8	39.3	38.8	38.1	37.5	36.6	34.1	32.7	30.2	27.8
115				39.3	38.0	37.1	36.5	36.0	35.3	34.7	34.1	31.6	30.2	27.8	25.4
120				37.0	35.5	34.6	34.0	33.4	32.7	32.1	31.7	29.3	27.9	25.6	23.2
125					33.3	32.4	31.7	31.1	30.4	29.8	29.3	27.1	25.8	23.5	21.2
130					31.4	30.3	29.6	29.0	28.3	27.7	27.2	25.1	23.8	21.6	19.3
135					29.6	28.5	27.7	27.0	26.4	25.7	25.2	23.3	22.0	19.8	17.5
140					28.0	26.8	26.0	25.3	24.6	23.9	23.4	21.6	20.3	18.2	15.9
145						25.2	24.3	23.6	22.9	22.3	21.6	19.9	18.7	16.6	14.4
150						23.8	22.9	22.1	21.4	20.6	20.0	18.4	17.2	15.1	12.9
155						22.6	21.5	20.6	19.9	19.1	18.4	17.0	15.8	13.7	11.5
160						21.5	20.2	19.2	18.4	17.7	17.0	15.5	14.5	12.5	10.3
165							18.9	17.9	17.1	16.4	15.7	14.2	13.3	11.2	9.1
170							17.8	16.7	15.9	15.2	14.4	12.9	12.1	10.1	7.9
175							16.7	15.6	14.8	14.0	13.2	11.8	11.0	9.0	6.9
180							15.8	14.6	13.7	13.0	12.2	10.7	10.0	8.0	5.8
185								13.6	12.8	12.0	11.1	9.6	9.0	7.0	4.9
190								12.7	11.8	11.1	10.2	8.7	8.0	6.1	4.0
195								11.9	11.0	10.2	9.3	7.8	7.1	5.2	3.1
200									10.2	9.4	8.4	6.9	6.2	4.4	2.3
205									9.5	8.6	7.6	6.1	5.4	3.6	
210										8.0	6.9	5.3	4.6	2.8	
215										7.3	6.2	4.6	3.9		
220											5.5	3.9	3.2		
225											4.9	3.3	2.5		
230											4.3	2.7			
235											3.8				
Hoist rope reeving minimum	20	13	12	10	9	8	6	5	5	5	4	4	3	3	3

Above lift chart is for reference only. For actual lift duty please refer to lift chart in operator's cab or manual.  
 \*Requires heavy duty boom configuration.

## Lifting capacities - main boom

## Scope of delivery:

Basic machine LR 1250 consisting of:

- Superstructure
- Main winches 2x 33,100 lbs without free fall
- Main boom luffing winch 1x 33,100 lbs including ropes
- Basic counterweight 166,000 lbs
- Hydraulic tilting cabin 20°
- Electronic load moment limiter LMB
- Hoisting limit switch
- Electric refuelling pump
- A-frame 1
- Undercarriage
- Flat track shoes 48" wide
- Carbody counterweight 2x 29,750 lbs
- Standard tool set
- Self erection system
- Main boom HPT, including pendants, corresponding length
- Ropes for main winches
- Corresponding hook block

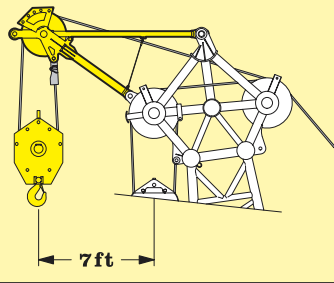
Option:

- Back-up control system
- Air conditioning
- Auxiliary jib
- GSM-modem

## Remarks:

1. The lifting capacities stated are valid for lifting operation only (corresponds with crane classification according to F.E.M.1001, crane group A1)
2. Crane standing on firm, level ground.
3. The weight of the lifting device (hoisting ropes, hook block, shackle etc.) must be deducted from the gross lifting capacity to obtain a net lifting value.
4. Additional equipment on boom (e.g. boom walkways, auxiliary jib) must be deducted to get the net lifting capacity.
5. The lifting capacities stated do not exceed 75% of the tipping load.
6. For max. wind speed please refer to lift chart in operator's cab or manual.
7. The slewing speed of the load may not exceed 90 m/min.
8. Working radii are measured from centre of swing and under load.
9. The lifting capacities are valid for 360 degrees of swing.
10. Calculation of stability under load is based on DIN 15019 / part 2 / chart 1.
11. The structures are calculated according to DIN 15018 / part 3.

### Auxiliary jib 33 US t



The lifting capacity of the auxiliary jib is equal to that of the main boom (HPT) at the same working radius, but must not exceed the maximum lifting capacity of 33 US t.

### Transport dimensions and weights

#### Auxiliary jib

Width	50"
L Length	10' 10"
H Heigh	5' 3"

#### Reeving chart depending on maximum load:

Reeving	1	2	3	4	5	6	7	8	9	10	11	12	13	14	15	16	17	18	19	20
Maximum load in US t	16.3	32.3	48.2	63.7	79.0	94.1	109.0	123.7	138.1	152.3	166.3	180.1	193.7	207.0	220.3	233.3	246.1	258.6	271.1	275.6
Single hook 18 US t																				
Hook block 50 US t																				
Hook block 110 US t																				
Hook block 165 US t																				
Hook block 232 US t																				
Hook block 275 US t																				

#### Main boom configuration (HPT) for boom lengths between 66 ft and 314 ft:

	Length	Amount of boom extensions																			
		1	1	1	1	1	1	1	1	1	1	1	1	1	1	1	1	1	1	1	1
Boom foot	23 ft	1	1	1	1	1	1	1	1	1	1	1	1	1	1	1	1	1	1	1	1
Boom ext.	10 ft	0	1	0	1	0	1	0	1	0	1	0	1	0	1	0	1	0	1	0	1
Boom ext.	20 ft	1	1	0	0	1	1	0	0	1	1	0	0	1	1	0	0	1	1	0	0
Boom ext.	38 ft	0	0	1	1	1	1	2	2	2	2	3	3	3	3	4	4	4	4	5	5
Boom head	23 ft	1	1	1	1	1	1	1	1	1	1	1	1	1	1	1	1	1	1	1	1
Boom length in (ft)		66	76	84	94	104	114	122	132	142	152	160	170	180	190	198	208	218	228	236	246
Reeving		16	14	12	12	11	10	10	9	9	8	8	7	6	6	5	5	5	4	4	4

# Scope of delivery and assembly of main boom



## Scope of delivery:

Basic machine LR 1250 consisting of:

- Superstructure
- Main winches 2x 33,100 lbs without free fall
- Main boom luffing winch 1x 33,100 lbs with ropes
- Basic counterweight 166,000lbs
- Hydraulic tilting cabin 20°
- Electronic load moment limiter LMB
- Hoisting limit switch
- Electric refuelling pump
- A-frame 1
- Undercarriage
- Flat pads 48 inch wide
- Carbody counterweight 2x 29,750 lbs
- Standard tool set
- Self assembly system
- Main boom (HPT) including pendants, corresponding length
- Ropes for main winches
- Corresponding hook block
- Jib (NDL) including pendants, corresponding length
- Jib luffing winch 1x 23,200 lbs with ropes

Option:

- Back-up control system
- Air conditioning
- Auxiliary jib
- GSM-modem

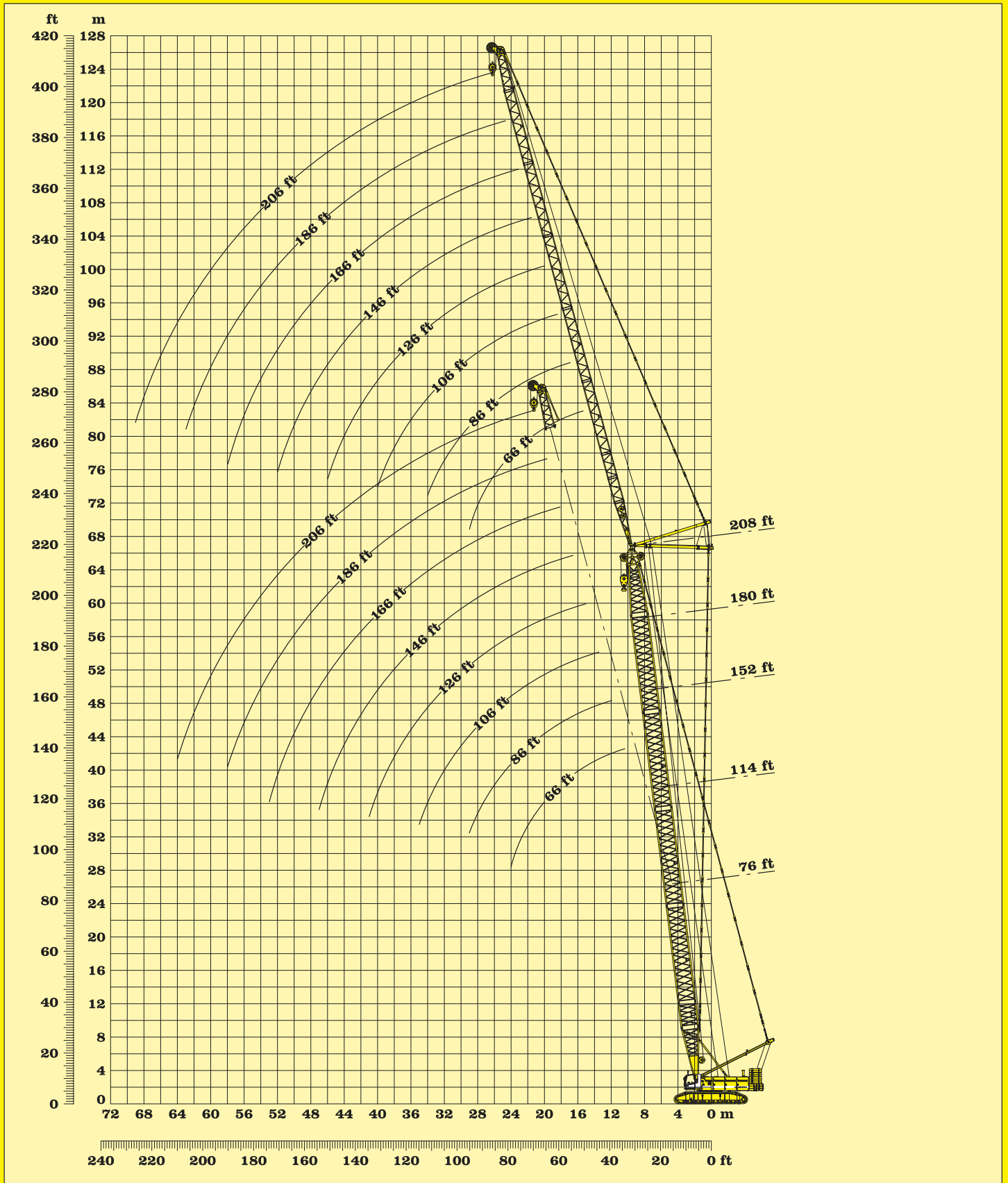
## Remarks:

1. The lifting capacities stated are valid for lifting operation only (corresponds with crane classification according to F.E.M. 1.001, crane group A1)
2. Crane standing on firm, horizontal ground.
3. The weight of the lifting device (hoisting ropes, hook block, shackle etc.) must be deducted from the gross lifting capacity to obtain a net lifting value.
4. Additional equipment on boom (e.g. boom walkways, auxiliary jib) must be deducted to get the net lifting capacity.
5. The lifting capacities stated do not exceed 75% of the tipping load.
6. For max. wind speed please refer to lift chart in operator's cab or manual.
7. The slewing speed of the load may not exceed 90 m/min.
8. Working radii are measured from centre of swing and under load.
9. The lifting capacities are valid for 360 degrees of swing.
10. Calculation of stability under load is based on DIN 15019 / part 2 / chart 1.
11. The structures are calculated according to DIN 15018 / part 3.

Main boom configuration (HPT) for lengths between 23 m and 63.8 m:																
Boom	Length	Amount of boom extensions														
Foot	7.0 m	1	1	1	1	1	1	1	1	1	1	1	1	1	1	1
Extension	3.0 m	1	0	1	0	1	0	1	0	1	0	1	0	1	0	1
Extension	6.0 m	1	0	0	1	1	0	0	1	1	0	0	1	1	0	0
Extension	11.7 m	0	1	1	1	1	2	2	2	2	3	3	3	3	4	4
Head	7.0m	1	1	1	1	1	1	1	1	1	1	1	1	1	1	1
Boom length (m)		23	25.7	28.7	31.7	34.7	37.4	40.4	43.4	46.4	49.1	52.1	55.1	58.1	60.8	63.8
Reeving		15	13	13	12	11	10	9	9	8	8	7	6	6	5	5

Jib configuration (NDL) for lengths between 20 m and 62 m:																
	Length	Amount of boom extensions														
Boom foot	5.5 m	1	1	1	1	1	1	1	1	1	1	1	1	1	1	1
Boom ext.	3.0 m	0	1	2	0	1	2	0	1	2	0	1	2	0	1	2
Boom ext.	9.0 m	1	1	1	2	2	2	3	3	3	4	4	4	5	5	5
Boom head	5.5 m	1	1	1	1	1	1	1	1	1	1	1	1	1	1	1
Jib length (m)		20	23	26	29	32	35	38	41	44	47	50	53	56	59	62

# Scope of delivery and assembly of main boom and luffing jib



## Working ranges - luffing jib main boom 83°

## Main boom (HPT)

76 ft

## Main boom (HPT)

114 ft

Capacities in 1000 lbs with luffing jib (NDL) : Jib length between 66 ft and 206 ft 166,000 lbs counterweight + 59,500 lbs carbody counterweight								
Jib (NDL)	66 ft	86 ft	106 ft	126 ft	146 ft	166 ft	186 ft	206 ft
Radius in (ft)	lbs	lbs	lbs	lbs	lbs	lbs	lbs	lbs
35	146,9							
40	150,9	117,8						
45	152,1	118,9	91,8					
50	137,0	120,0	91,7	72,5				
55	124,5	119,7	89,5	71,4	54,3			
60	111,2	109,8	87,4	69,7	53,1	39,9		
65	100,4	100,1	85,0	67,9	52,3	41,1	31,4	
70	91,9	91,1	81,8	66,0	51,3	39,9	30,4	23,0
75	78,1	83,5	76,6	64,4	50,4	39,8	30,4	22,0
80		77,0	75,4	63,1	49,6	39,8	30,0	22,0
85		71,3	71,2	61,7	48,8	39,4	29,7	21,8
90		66,1	66,2	60,3	47,9	38,7	29,3	21,4
95		56,9	61,9	58,9	47,2	38,1	28,8	21,1
100			58,1	57,3	46,4	37,5	28,3	20,9
105			53,4	53,9	45,7	36,8	27,8	20,6
110			48,2	50,9	44,9	36,1	27,3	20,4
115			43,0	48,1	43,2	35,3	26,8	20,2
120				44,5	41,3	34,6	26,3	20,0
125				40,9	39,4	33,8	25,8	19,5
130				37,3	37,4	32,5	25,3	19,1
135				33,7	35,5	31,3	24,8	18,7
140					32,9	30,1	24,2	18,3
145					30,2	28,9	23,5	17,9
150					27,6	27,6	22,8	17,5
155					24,9	26,2	22,1	17,2
160						24,6	21,4	16,9
165						23,0	20,7	16,6
170						21,5	19,9	16,3
175							19,0	16,0
180							18,0	15,7
185							17,1	15,4
190							16,2	14,7
195								14,1
200								13,5
205								12,9
210								12,3
Reeving	5	4	3	3	2	2	2	2

Capacities in 1000 lbs with luffing jib (NDL) : Jib length between 66 ft and 206 ft 62 m 166,000 lbs counterweight + 59,500 lbs carbody counterweight								
Jib (NDL)	66 ft	86 ft	106 ft	126 ft	146 ft	166 ft	186 ft	206 ft
Radius in (ft)	lbs	lbs	lbs	lbs	lbs	lbs	lbs	lbs
40	124,2							
45	125,7	102,5						
50	123,5	103,5	81,1					
55	112,8	104,2	81,2	63,1				
60	103,7	99,9	81,1	63,1	49,7			
65	96,0	92,5	81,1	62,4	48,0	37,4		
70	89,4	86,0	80,3	61,6	47,9	36,8	28,1	
75	81,9	80,4	77,6	60,7	47,7	37,3	28,1	20,7
80	75,4	75,3	73,2	59,8	47,2	36,5	28,1	20,5
85		69,7	68,9	58,7	46,5	35,7	27,8	19,9
90		64,9	64,8	57,7	45,7	35,3	27,4	19,7
95		60,6	60,5	56,6	44,9	35,0	27,0	19,7
100		56,8	56,7	55,6	43,7	34,8	26,5	19,7
105			53,4	53,3	42,5	34,4	26,0	19,6
110			50,3	50,3	41,3	33,6	25,5	19,4
115			47,6	47,5	40,1	32,8	25,0	19,2
120			44,4	45,0	39,1	31,9	24,7	19,0
125				42,7	38,2	31,1	24,3	18,7
130				40,6	37,3	30,4	24,0	18,4
135				37,7	36,4	29,8	23,6	18,1
140				34,7	35,4	29,3	23,3	17,8
145					33,2	28,8	22,8	17,5
150					30,8	28,3	22,4	17,2
155					28,5	27,8	21,9	17,0
160						26,6	21,4	16,7
165						25,0	21,0	16,5
170						23,5	20,5	16,3
175						22,0	19,9	16,1
180							19,1	15,8
185							18,4	15,6
190							17,6	15,4
195							16,8	14,8
200								14,3
205								13,8
210								13,3
215								12,8
Reeving	5	4	3	2	2	2	2	2

Above lift charts is for reference only. For actual lift duty please refer to lift chart in operator's cab or manual.

# Lifting capacities - luffing jib main boom 83°

## Main boom (HPT)

152 ft

## Main boom (HPT)

180 ft

Capacities in 1000 lbs with luffing jib (NDL) : Jib length between 66 ft and 206 ft 166,000 lbs counterweight + 59,500 lbs carbody counterweight								
Jib (NDL)	66 ft	86 ft	106 ft	126 ft	146 ft	166 ft	186 ft	206 ft
Radius in (ft)	lbs	lbs	lbs	lbs	lbs	lbs	lbs	lbs
40								
45	103.5							
50	104.6	85.4						
55	102.0	86.1	70.5					
60	94.1	87.2	70.6	57.5				
65	87.3	83.6	70.8	56.9	43.6			
70	81.4	77.9	70.7	56.3	42.6	34.0		
75	76.2	72.9	69.9	55.7	41.1	32.8	25.8	
80	71.7	68.5	66.5	55.1	40.2	32.1	25.5	19.3
85	67.9	64.5	62.7	54.2	39.3	31.6	24.9	18.6
90		61.0	59.2	52.9	38.7	31.2	24.4	18.5
95		57.9	56.1	51.7	38.0	30.7	24.0	18.2
100		55.1	53.3	50.5	37.4	30.1	23.6	17.9
105		51.8	50.8	49.2	36.4	29.6	23.1	17.6
110			48.5	47.1	35.5	29.1	22.7	17.4
115			46.1	45.0	34.6	28.7	22.2	17.3
120			43.7	43.0	33.6	28.3	21.7	17.2
125			41.5	41.3	32.8	27.9	21.3	17.1
130				39.4	32.0	27.5	21.0	17.0
135				37.5	31.2	27.0	20.6	16.8
140				35.8	30.3	26.3	20.3	16.7
145				34.2	29.5	25.6	19.9	16.5
150					28.6	24.9	19.6	16.4
155					27.6	24.2	19.3	16.2
160					26.6	23.5	19.0	16.1
165						22.8	18.7	15.8
170						22.2	18.4	15.6
175						21.6	18.2	15.3
180						21.0	17.8	15.0
185							17.3	14.8
190							16.9	14.5
195							16.4	14.3
200							16.0	13.8
205								13.4
210								13.0
215								12.7
220								12.3
Reeving	4	4	3	2	2	2	2	2

Capacities in 1000 lbs with luffing jib (NDL) : Jib length between 66 ft and 206 ft 166,000 lbs counterweight + 59,500 lbs carbody counterweight								
Jib (NDL)	66 ft	86 ft	106 ft	126 ft	146 ft	166 ft	186 ft	206 ft
Radius in (ft)	lbs	lbs	lbs	lbs	lbs	lbs	lbs	lbs
45								
50	86.1							
55	86.9	72.8						
60	86.3	73.1	61.1					
65	80.5	73.0	61.3	50.6				
70	75.1	71.6	61.2	50.3	38.6	29.9		
75	70.4	68.1	60.4	49.8	37.2	29.9		
80	66.3	64.0	59.2	49.3	36.9	29.3	22.5	17.2
85	62.6	60.4	57.7	48.7	36.4	28.7	22.9	17.2
90	59.5	57.2	54.8	47.5	35.9	28.3	23.5	17.2
95		54.2	51.9	46.0	35.2	27.8	22.7	17.2
100		51.6	49.3	44.5	34.6	27.0	21.9	17.1
105		49.3	47.0	43.0	33.9	26.2	21.3	16.9
110		47.3	44.8	41.5	32.9	25.3	20.8	16.8
115			42.9	40.1	32.0	24.7	20.3	16.6
120			41.1	38.6	31.0	24.5	19.8	16.4
125			39.5	37.1	30.1	24.4	19.3	16.1
130			37.6	35.6	28.8	24.2	18.9	15.9
135				34.1	27.6	24.0	18.4	15.7
140				32.6	26.4	23.5	18.0	15.4
145				31.1	25.1	22.6	17.5	15.0
150					23.9	21.7	17.1	14.7
155					22.6	20.8	16.7	14.4
160					21.4	19.9	16.3	14.1
165					20.2	19.0	15.9	13.8
170						18.3	15.6	13.5
175						17.7	15.2	13.3
180						17.1	14.8	13.0
185						16.5	14.7	12.7
190							14.6	12.5
195							14.6	12.2
200							14.6	12.0
205							14.6	11.8
210								11.5
215								11.3
220								11.1
225								11.0
Reeving	4	3	3	2	2	2	2	2

Above lift charts is for reference only. For actual lift duty please refer to lift chart in operator's cab or manual.

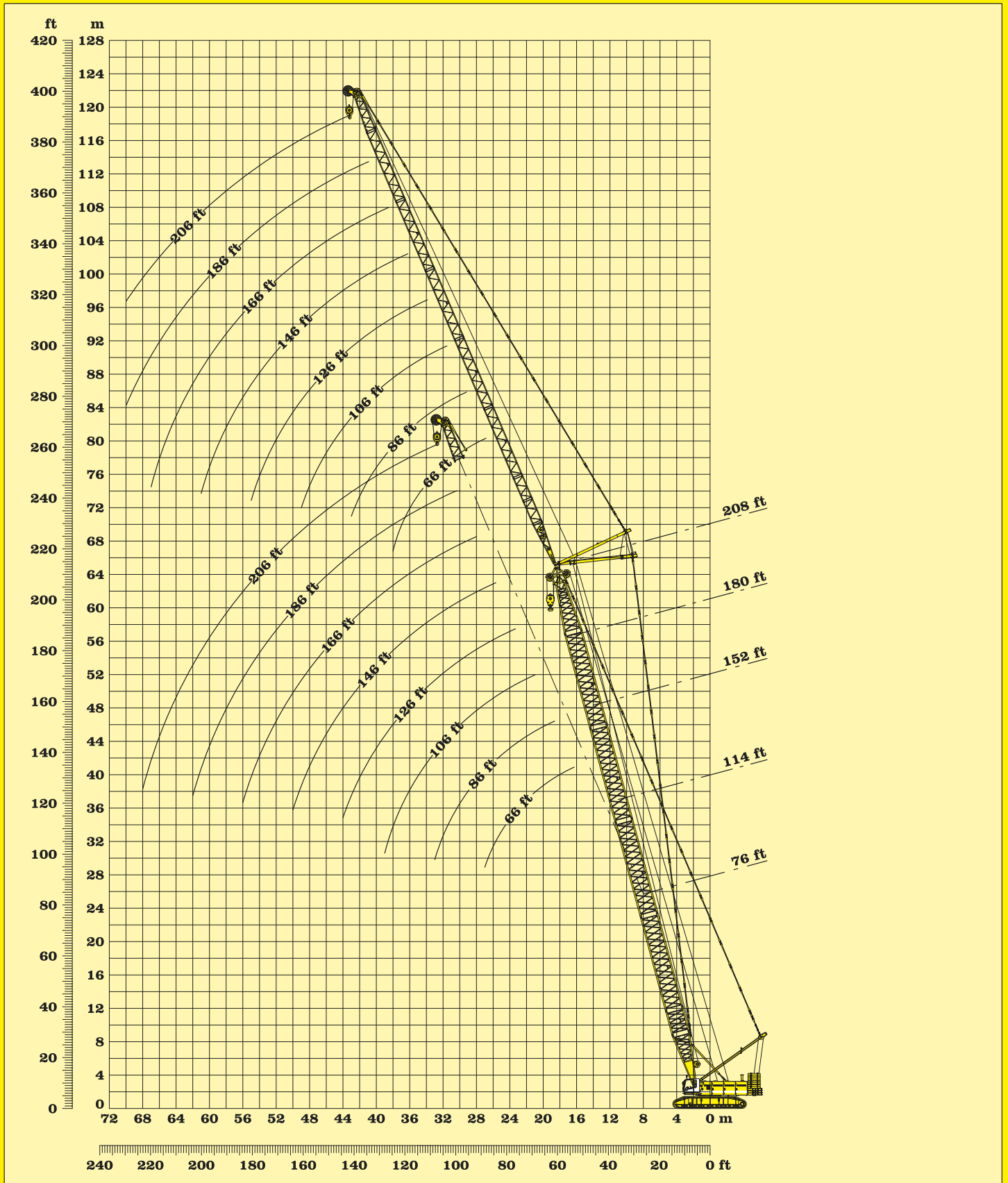
# Lifting capacities - luffing jib main boom 83°

Capacities in 1000 lbs with luffing jib (NDL) :  
 Jib length between 66 ft and 206 ft  
 166,000 lbs counterweight + 59,500 lbs carbody counterweight

Jib (NDL)	66 ft	86 ft	106 ft	126 ft	146 ft	166 ft	186 ft	206 ft
Radius in (ft)	lbs	lbs	lbs	lbs	lbs	lbs	lbs	lbs
50	70.7							
55	71.5	61.5						
60	70.0	61.4	52.1					
65	67.8	60.6	52.1	43.7				
70	64.6	58.7	51.6	43.3	33.9			
75	61.4	56.1	50.7	42.2	33.4	16.1		
80	58.3	53.7	48.5	41.2	32.0	25.9	20.3	
85	56.2	51.5	46.1	40.2	31.1	25.2	20.2	15.5
90	54.0	49.3	44.1	39.2	30.3	24.6	19.7	15.5
95	51.9	47.3	42.4	38.0	29.4	24.1	19.1	15.5
100		45.4	40.7	36.8	28.5	23.5	18.7	15.5
105		43.6	39.3	35.6	27.6	22.9	18.4	15.0
110		42.4	38.1	34.4	26.6	22.4	18.0	14.4
115			37.0	33.2	25.7	21.7	17.6	14.0
120			35.8	32.0	24.8	21.1	17.3	13.9
125			34.6	30.7	23.9	20.5	16.9	13.8
130			33.5	29.4	22.9	19.9	16.5	13.7
135				28.1	22.0	19.3	16.0	13.6
140				26.8	21.4	18.7	15.6	13.4
145				25.5	20.8	18.1	15.1	13.1
150				24.2	20.1	17.5	14.7	12.7
155					19.5	17.0	14.3	12.4
160					18.9	16.4	14.0	12.1
165					18.2	15.8	13.7	11.8
170					17.7	15.3	13.4	11.5
175						14.8	13.1	11.2
180						14.2	12.8	11.0
185						13.7	12.5	10.7
190						13.2	12.1	10.4
195							11.8	10.2
200							11.5	9.9
205							11.1	9.7
210								9.5
215								9.2
220								9.0
225								8.9
Reeving	4	3	3	2	2	2	2	2

Above lift chart is for reference only. For actual lift duty please refer to lift chart in operator's cab or manual.

# Lifting capacities - luffing jib main boom 83°



## Working ranges - luffing jib main boom 75°

## Main boom (HPT)

## 76 ft Main boom (HPT)

## 114 ft

Capacities in 1000 lbs with luffing jib (NDL) : Jib length between 66 ft and 206 ft 165,350 lbs counterweight + 59,600 lbs carbody counterweight								
Jib (NDL)	66 ft	86 ft	106 ft	126 ft	146 ft	166 ft	186 ft	206 ft
Radius in (ft)	lbs	lbs	lbs	lbs	lbs	lbs	lbs	lbs
55	118.1							
60	106.4							
65	96.0	95.5						
70	87.3	86.9	84.4					
75	80.0	79.6	79.3	64.8				
80	73.8	73.3	73.1	64.8				
85	68.4	68.0	67.7	64.0	49.0			
90	63.7	63.3	63.0	62.1	48.3	39.4		
95		59.1	58.8	58.1	47.6	38.9		
100		55.4	55.2	54.4	46.9	38.3	27.9	
105		52.2	51.9	51.1	46.3	37.8	27.8	20.1
110			48.9	48.2	45.7	37.3	27.7	19.9
115			46.3	45.5	45.0	36.8	27.6	19.7
120			43.9	43.1	42.8	36.2	27.5	19.5
125			41.7	40.9	40.6	35.7	27.0	19.3
130				38.9	38.6	35.2	26.4	19.0
135				37.1	36.7	34.6	25.9	18.8
140				35.4	35.0	33.8	25.4	18.5
145				33.8	33.4	32.7	24.9	18.2
150					31.9	31.2	24.4	17.9
155					30.6	29.9	23.9	17.6
160					29.3	28.6	23.4	17.4
165					28.1	27.4	22.9	17.1
170						26.3	22.4	16.9
175						25.3	21.9	16.7
180						24.2	21.3	16.5
185						22.6	20.5	16.3
190							19.6	16.1
195							18.8	15.9
200							18.0	15.5
205								15.0
210								14.5
215								14.1
220								13.6
Reeving	5	4	3	3	2	2	2	2

Capacities in 1000 lbs with luffing jib (NDL) : Jib length between 66 ft and 206 ft 165,350 lbs counterweight + 59,600 lbs carbody counterweight								
Jib (NDL)	66 ft	86 ft	106 ft	126 ft	146 ft	166 ft	186 ft	206 ft
Radius in (ft)	lbs	lbs	lbs	lbs	lbs	lbs	lbs	lbs
65	87.6							
70	81.4							
75	75.9	73.2						
80	69.9	68.5	66.4					
85	64.8	64.3	62.5	58.6				
90	60.3	59.8	58.9	56.5				
95	56.3	55.8	55.6	53.4	45.1			
100	52.8	52.3	52.1	50.6	45.1	35.3		
105		49.2	49.0	48.0	44.5	35.3		
110		46.4	46.1	45.3	44.2	35.1	26.1	
115		43.8	43.6	42.8	42.2	34.8	26.1	19.0
120			41.3	40.4	40.2	34.5	26.1	19.0
125			39.2	38.3	38.1	34.2	26.1	19.0
130			37.2	36.4	36.2	33.9	25.6	19.0
135			35.5	34.7	34.4	33.4	25.2	18.8
140				33.0	32.8	32.0	24.8	18.5
145				31.5	31.3	30.5	24.5	18.1
150				30.2	29.9	29.1	24.1	17.8
155				28.9	28.6	27.8	23.9	17.5
160					27.3	26.6	23.6	17.3
165					26.2	25.4	23.3	17.0
170					25.2	24.4	23.1	16.8
175					24.2	23.4	22.6	16.6
180						22.5	21.7	16.4
185						21.6	20.8	16.2
190						20.8	20.0	15.9
195						20.0	19.2	15.7
200							18.5	15.4
205							17.8	15.1
210							17.2	14.9
215								14.6
220								14.3
225								14.1
230								13.9
Reeving	5	4	3	3	2	2	2	2

Above lift charts is for reference only. For actual lift duty please refer to lift chart in operator's cab or manual.

# Lifting capacities - luffing jib main boom 75°

## Main boom (HPT)

152 ft

## Main boom (HPT)

180 ft

Capacities in 1000 lbs with luffing jib (NDL) : Jib length between 66 ft and 206 ft 165,350 lbs counterweight + 59,600 lbs carbody counterweight								
Jib (NDL)	66 ft	86 ft	106 ft	126 ft	146 ft	166 ft	186 ft	206 ft
Radius in (ft)	lbs	lbs	lbs	lbs	lbs	lbs	lbs	lbs
75	66.3							
80	62.1							
85	58.4	55.6						
90	55.1	52.4	50.9					
95	52.2	49.6	48.1					
100	49.6	47.0	45.6	44.3				
105	46.6	44.7	43.3	42.1	39.9			
110	43.9	42.5	41.2	40.0	38.0	32.2		
115		40.6	39.3	38.1	36.1	32.2		
120		38.4	37.5	36.4	34.4	32.2	23.5	
125		36.4	35.9	34.8	32.9	31.2	23.6	18.0
130			34.4	33.3	31.4	29.7	23.7	18.0
135			32.7	31.9	30.1	28.4	24.0	18.0
140			31.2	30.6	28.8	27.2	23.7	17.6
145			29.8	29.4	27.6	26.0	23.5	17.2
150				28.3	26.5	25.0	23.3	17.0
155				27.1	25.5	23.9	22.4	16.9
160				25.9	24.5	23.0	21.5	16.7
165				24.8	23.6	22.1	20.6	16.5
170					22.8	21.3	19.8	16.3
175					22.0	20.5	19.0	16.2
180					21.2	19.7	18.2	16.0
185					20.3	19.0	17.5	15.8
190						18.4	16.9	15.3
195						17.8	16.3	14.7
200						17.2	15.7	14.1
205						16.7	15.1	13.6
210							14.6	13.0
215							14.1	12.5
220							13.7	12.1
225								11.6
230								11.2
235								10.8
240								10.5
Reeving	4	4	3	2	2	2	2	2

Capacities in 1000 lbs with luffing jib (NDL) : Jib length between 66 ft and 206 ft 165,350 lbs counterweight + 59,600 lbs carbody counterweight								
Jib (NDL)	66 ft	86 ft	106 ft	126 ft	146 ft	166 ft	186 ft	206 ft
Radius in (ft)	lbs	lbs	lbs	lbs	lbs	lbs	lbs	lbs
80								
85	51.7							
90	48.8	47.0						
95	46.1	44.4	41.6					
100	43.7	42.1	40.1					
105	41.6	40.0	38.0	37.0				
110	39.7	38.1	36.1	35.1	32.4			
115	38.0	36.3	34.4	33.4	31.4			
120		34.7	32.8	31.9	29.9	28.2		
125		33.2	31.4	30.4	28.5	26.9	21.6	
130		31.9	30.0	29.1	27.2	25.6	21.6	
135		30.7	28.8	27.9	26.0	24.4	21.6	16.3
140			27.6	26.7	24.9	23.3	21.5	16.3
145			26.5	25.6	23.8	22.3	20.7	16.3
150			25.6	24.6	22.8	21.3	19.8	15.9
155			24.8	23.7	21.9	20.4	18.9	15.8
160				22.8	21.0	19.5	18.1	15.7
165				22.0	20.2	18.7	17.3	15.5
170				21.3	19.5	18.0	16.5	14.9
175					18.8	17.3	15.8	14.2
180					18.1	16.6	15.1	13.6
185					17.5	16.0	14.5	13.0
190					16.9	15.4	13.9	12.4
195						14.8	13.4	11.8
200						14.3	12.8	11.3
205						13.8	12.3	10.8
210						13.4	11.8	10.3
215							11.4	9.9
220							11.0	9.4
225							10.6	9.0
230							10.3	8.6
235								8.3
240								8.0
245								7.7
250								7.4
Reeving	4	3	3	2	2	2	2	2

Above lift charts is for reference only. For actual lift duty please refer to lift chart in operator's cab or manual.

# Lifting capacities - luffing jib main boom 75°

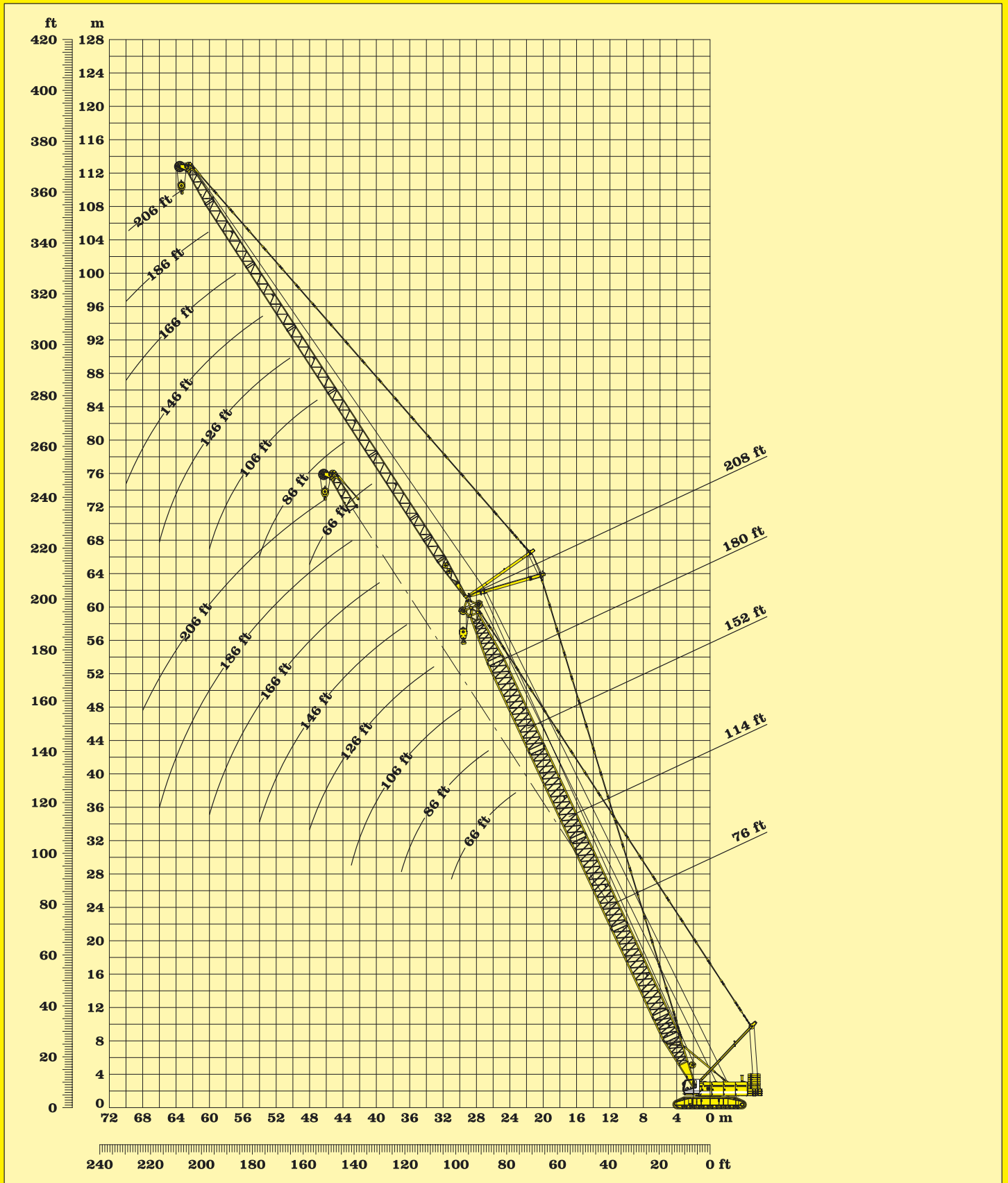


Capacities in 1000 lbs with luffing jib (NDL) :  
 Jib length between 66 ft and 206 ft  
 165,350 lbs counterweight + 59,600 lbs carbody counterweight

Jib (NDL)	66 ft	86 ft	106 ft	126 ft	146 ft	166 ft	186 ft	206 ft
Radius in (ft)	lbs	lbs	lbs	lbs	lbs	lbs	lbs	lbs
90	42.2							
95	39.9	37.9						
100	37.8	36.3						
105	36.9	34.4	32.5					
110	34.1	32.7	30.9	29.5				
115	32.5	31.2	29.3	28.5				
120	31.1	29.7	27.9	27.2	25.2			
125		28.4	26.6	25.9	24.0	21.9		
130		27.2	25.4	24.7	22.8	21.2		
135		26.1	24.3	23.6	21.8	20.2	18.6	
140		25.1	23.3	22.6	20.8	19.2	17.7	14.0
145			2.3	21.6	19.8	18.3	16.8	14.1
150			21.5	20.7	19.0	17.5	15.9	14.0
155			20.7	19.9	18.2	16.7	15.2	13.5
160			19.9	19.1	17.4	15.9	14.4	12.8
165				18.4	16.7	15.2	13.7	12.1
170				17.7	16.0	14.5	13.1	11.5
175				17.1	15.3	13.9	12.4	10.9
180				16.5	14.7	13.3	11.9	10.3
185					14.2	12.7	11.3	9.7
190					13.6	12.2	10.8	9.2
195					13.2	11.7	10.3	8.7
200					12.7	11.2	9.8	8.3
205						10.8	9.4	7.8
210						10.4	8.9	7.4
215						10.0	8.5	7.0
220							8.2	6.6
225							7.8	6.3
230							7.5	5.9
235							7.2	5.6
240								5.3
245								5.0
250								4.8
255								4.5
Reeving	4	3	3	2	2	2	2	2

Above lift chart is for reference only. For actual lift duty please refer to lift chart in operator's cab or manual.

# Lifting capacities - luffing jib main boom 75°



## Working ranges - luffing jib main boom 65°

## Main boom (HPT)

## 76 ft Main boom (HPT)

## 114 ft

Capacities in 1000 lbs with luffing jib (NDL) : Jib length between 66 ft and 206 ft 165,350 lbs counterweight + 59,600 lbs carbody counterweight								
Jib (NDL)	66 ft	86 ft	106 ft	126 ft	146 ft	166 ft	186 ft	206 ft
Radius in (ft)	lbs	lbs	lbs	lbs	lbs	lbs	lbs	lbs
75								
80	69.6							
85	64.5							
90	60.0	59.4						
95	56.1	55.5						
100	52.6	52.0	51.7					
105		48.9	48.6					
110		46.2	45.8	44.9				
115		43.6	43.3	42.4				
120		41.4	41.0	40.1	39.8			
125			38.9	38.1	37.7			
130			37.0	36.2	35.8	34.3		
135			25.3	34.4	34.0	33.2		
140			33.7	32.8	32.4	31.6	25.2	
145				31.4	30.9	30.1	25.2	
150				30.0	29.5	28.8	25.0	17.8
155				28.7	28.3	27.5	24.6	17.8
160				27.6	27.1	26.3	24.3	17.8
165					26.0	25.2	24.0	17.7
170					24.9	24.1	23.3	17.4
175					23.9	23.2	22.4	17.2
180						22.2	21.4	16.9
185						21.4	20.6	16.7
190						20.6	19.8	16.5
195						19.8	19.0	16.3
200							18.3	16.1
205							17.6	16.0
210							17.0	15.7
215							16.4	15.5
220								14.9
225								14.4
230								13.9
225								13.4
Reeving	5	4	3	3	2	2	2	2

Capacities in 1000 lbs with luffing jib (NDL) : Jib length between 66 ft and 206 ft 165,350 lbs counterweight + 59,600 lbs carbody counterweight								
Jib (NDL)	66 ft	86 ft	106 ft	126 ft	146 ft	166 ft	186 ft	206 ft
Radius in (ft)	lbs	lbs	lbs	lbs	lbs	lbs	lbs	lbs
95	50.8							
100	47.5							
105	44.7	44.0						
110	42.1	41.5						
115	39.8	39.1	38.8					
120		37.0	36.7					
125		35.1	34.8	33.8				
130		33.4	33.0	32.1				
135		31.8	31.4	30.5	29.9			
140			30.0	29.0	28.7			
145			28.6	27.7	27.3	25.8		
150			27.3	26.4	26.1	25.1		
155			26.2	25.3	24.9	24.0	22.0	
160				24.2	23.8	22.9	21.5	
165					23.2	22.8	21.9	20.6
170					22.3	21.8	21.0	19.8
175					21.4	20.9	20.1	19.0
180						20.1	19.2	18.2
185						19.3	18.5	17.5
190						18.6	17.7	16.8
195						17.9	17.0	16.2
200							16.4	15.5
205							15.8	14.9
210							15.2	14.3
215								13.7
220								13.2
225								12.7
230								12.2
235								10.6
240								10.2
245								9.8
250								9.4
255								
Reeving	5	4	3	3	2	2	2	2

Above lift charts is for reference only. For actual lift duty please refer to lift chart in operator's cab or manual.

# Lifting capacities - luffing jib main boom 65°

## Main boom (HPT)

152 ft

## Main boom (HPT)

180 ft

Capacities in 1000 lbs with luffing jib (NDL) : Jib length between 66 ft and 206 ft 165,350 lbs counterweight + 59,600 lbs carbody counterweight								
Jib (NDL)	66 ft	86 ft	106 ft	126 ft	146 ft	166 ft	186 ft	206 ft
Radius in (ft)	lbs	lbs	lbs	lbs	lbs	lbs	lbs	lbs
110	36.8							
115	35.1							
120	33.2	31.2						
125	31.4	29.8						
130	29.9	28.4	27.1					
135	28.4	27.2	26.1					
140		25.9	25.0	23.7				
145		24.7	23.9	23.0				
150		23.6	23.0	22.0				
155			22.1	21.1	19.4			
160			21.2	20.3	18.5			
165			20.3	19.5	17.8	16.3		
170			19.5	18.8	17.0	15.5		
175				18.1	16.3	14.9	13.4	
180				17.4	15.7	14.2	12.8	
185				16.8	15.1	13.6	12.2	10.6
190				16.3	14.5	13.1	11.6	10.0
195					14.0	12.5	11.1	9.5
200					13.5	12.0	10.6	9.0
205					13.0	11.5	10.1	8.6
210					12.6	11.1	9.7	8.1
215						10.7	9.2	7.7
220						10.3	8.8	7.3
225						9.9	8.5	6.9
230						9.6	8.1	6.6
235							7.8	6.2
240							7.5	5.9
245							7.2	5.6
250								5.3
255								5.0
260								4.8
265								4.6
Reeving	4	4	3	2	2	2	2	2

Capacities in 1000 lbs with luffing jib (NDL) : Jib length between 66 ft and 206 ft 165,350 lbs counterweight + 59,600 lbs carbody counterweight								
Jib (NDL)	66 ft	86 ft	106 ft	126 ft	146 ft	166 ft	186 ft	206 ft
Radius in (ft)	lbs	lbs	lbs	lbs	lbs	lbs	lbs	lbs
120								
125	25.8							
130	24.6							
135	23.6	22.2						
140	22.6	21.2						
145	21.7	20.3	18.7					
150		19.5	17.8					
155		18.7	17.1	16.3				
160		18.0	16.3	15.6				
165		17.3	15.7	14.9	13.2			
170			15.0	14.3	12.5			
175			14.5	13.7	12.0	10.5		
180			13.9	13.1	11.4	10.0		
185			13.5	12.6	10.9	9.5	8.0	
190				12.1	10.4	9.0	7.6	
195				11.6	10.0	8.5	7.1	5.4
200				11.2	9.5	8.1	6.7	5.1
205					9.1	7.7	6.3	4.7
210					8.7	7.3	5.9	4.4
215					8.4	6.9	5.6	4.0
220					8.0	6.6	5.2	3.7
225						6.3	4.9	3.4
230						6.0	4.6	3.1
235						5.7	4.3	2.8
240						5.5	4.0	2.5
245							3.8	2.2
250							3.5	
255							3.3	
260							3.1	
265								
270								
275								
Reeving	4	3	3	2	2	2	2	2

Above lift charts is for reference only. For actual lift duty please refer to lift chart in operator's cab or manual.

# Lifting capacities - luffing jib main boom 65°

# Main boom (HPT)

208 ft

Capacities in 1000 lbs with luffing jib (NDL) :  
Jib length between 66 ft and 206 ft  
165,350 lbs counterweight + 59,600 lbs carbody counterweight

Jib (NDL)	66 ft	86 ft	106 ft	126 ft	146 ft	166 ft	186 ft	206 ft
Radius in (ft)	lbs	lbs	lbs	lbs	lbs	lbs	lbs	lbs
135	17.5							
140	16.7							
145	15.9	14.8						
150	15.2	14.1						
155	14.6	13.4	11.8					
160		12.8	11.2					
165		12.2	10.7	10.0				
170		11.7	10.1	9.5	7.2			
175		11.2	9.7	9.0	7.2			
180			9.2	8.6	6.9	4.8		
185			8.8	8.1	6.5	4.9		
190			8.4	7.7	6.1	4.6	2.7	
195			8.0	7.3	5.7	4.3	2.7	
200				7.0	5.3	3.9	2.5	
205				6.6	5.0	3.6	2.2	
210				6.3	4.7	3.3		
215				6.0	4.4	3.0		
220					4.1	2.7		
225					3.8	2.5		
230					3.6	2.2		
235					3.4			
Reeving	4	3	3	2	2	2	2	2

Above lift charts is for reference only. For actual lift duty please refer to lift chart in operator's cab or manual.

# Lifting capacities - luffing jib main boom 65°



## Engine

Water cooled, V-8-cylinder Liebherr Diesel engine, turbo charged with intercooler, model D 9408 TI-E, power rating according to ISO 9249, 544 hp at 1900 rpm. The automatic load control system adapts perfectly the power output of the main users to the engine rpm. The temperature and rpm controlled cooling system saves power and reduces the noise emission. Fuel Tank: 2x 121.5 gal capacity with continuous level indicator and reserve warning at 10.6 gal.



## Hydraulic System

The main pumps are operated by a distributor gearbox. Axial piston displacement pumps work in closed and open circuits supplying oil only when needed (flow control on demand). To minimize peak pressure an automatically working pressure cut off is integrated. This spares pumps and saves energy. Winch 1 and 2: Axial piston displacement pumps (swash plate design) with 85 gal/min. each. Crawlers: Axial piston displacement pumps (swash plate design) with 2x 79 gal/min. Swing gear: Axial piston displacement pump (swash plate design) with 85 gal/min. Boom hoist: Axial piston displacement pump (swash plate design) with 79 gal/min. Max. working pressure: 5075 psi. Hydraulic oil tank capacity: 248 gal. The hydraulic oil is cleaned through electronically controlled pressure and return filters. Possible contamination is signaled in the cabin. The use of synthetic environmentally friendly oils is possible.



## Winches

Winch options:  
 Single working line pull **33,100 lbs**  
 Rope diameter (metric only): **28 mm**  
 Drum diameter : **29 "**  
 Rope speed ft/min **0-380**  
 Rope capacity 7 layers **1870 ft**  
 Propulsion through a planetary gearbox in an oil bath. Load support by the hydraulic system; additional safety factor provided by a spring loaded, multi-disc holding brake. The main winches use pressure controlled, variable flow hydraulic motors. This system features sensors that automatically adjust oil flow to provide max. winch speed depending on load.  
 Option - winch with freefall system:  
 Clutch and braking functions on the freefall system are provided by a compact designed, low wear and maintenance free multi-disc brake.



## Equipment

- Main boom HPT, max. length **314 ft**
- Jib NDL, max. length **206 ft**
- Jib - stay ropes
- Jib - luffing winch with ropes
- Auxiliary jib 33 US t lifting capacity
- Ropes for main winches
- Hook
- Heavy lift equipment available upon request.

**MANUFACTURER:**  
**LIEBHERR-WERK NENZING GMBH,**  
 P.O. Box 10, A-6710 Nenzing / Austria / Europe  
 Tel. (01143) 5525 - 606 - 473,  
 Fax (01143) 5525 - 606 - 499  
 Email: info@lwn.liebherr.com

**US SALES:**  
**LIEBHERR CRAWLER CRANE CO.**  
 8515 Market Street, Houston, TX 77029  
 P.O. Box 15355, Houston, TX 77220  
 Tel. (713)672-1601 / Fax: (713)672-2808  
 Email: lercrawler@aol.com

**LOCAL DEALER:**



## Swing Drive

Consists of rollerbearing with external teeth, 2 swing drives with fixed axial piston hydraulic motor, spring loaded and hydraulically released multi-disc holding brake, planetary gearbox and pinion. Free swing with hydraulic moment control reduces wear to a minimum, because rotation moment is sustained through the hydraulic system by the Diesel engine. A multi-disc holding brake acts automatically at zero swing motion. Swing speed from 0 - 1.84 rpm continuously variable.



## Crawler

Propulsion through axial piston motor, hydraulically released spring loaded multi-disc brake, crawler tracks, hydraulic chain tensioning device.  
 Flat track shoes **48 "**  
 Drive speed **0.8 mph.**



## Control

The control system - developed and manufactured by Liebherr - is designed to withstand extreme temperature and the many heavy-duty construction tasks for which this crane has been designed. Complete machine operating data are displayed on a high resolution monitor screen. To ensure clarity of the information on display, different levels of data are shown in enlarged lettering and symbols. Control and monitoring of the sensors are also handled by this high technology system. Error indications are automatically displayed on the monitor in English. The crane is equipped with proportional control for all movements, which can be carried out simultaneously. Additionally a "Redundant" or back-up control system is standard, allowing restricted operation of the machine in the event of a malfunction in the electronics or the sensors. The crane is operated with 2 multi-directional joysticks, right for winch I and boom hoist drive, left for winch II and swing. Crawler control is actuated with the two central foot pedals. Additionally, hand levers can be attached to the pedals.

- Options:
- MDE: Machine data recording
  - PDE: Process data recording
  - GSM-modem



## Boom luffing winch

Drum with internally located planetary gearbox, axial piston hydraulic motor and hydraulically released spring loaded multi-disc brake. Max. line pull: 33,100 lbs. Rope diameter: 24 mm (metric only). Line speed: 0-280 ft/min.



## Jib luffing winch

Drum with internally located planetary gearbox, axial piston hydraulic motor and hydraulically released spring loaded multi-disc brake. Max. line pull: 17,650 lbs. Rope diameter: 20 mm (metric only). Line speed: 0-236 ft/min.



## Noise emission

Special sound proofing results in a very low noise pressure level of 78 dB (A) at 53 ft radius (ISO 4872).