
Overview of icons and operating elements

LRT 1130-2.1

Status: 01/2024

The purpose of this icon overview is to provide you with a quick overview of selected operating functions for your crane. It does not contain all operating, assembly, warning and safety information necessary to properly assemble and operate the crane. It is absolutely necessary to study the operating instructions before operating the crane in order to have a complete understanding about the operation, assembly, warning and safety information.

LIEBHERR



Overview
Operating and monitoring instruments



Instrument panel

- 1 Warning light
- 2 Switch level 1: Parking light
Switch level 2: Low beam headlights
- 3 Rotating beacon
- 4 SCR system cleaning engaged*
Switch pressed on the top:
SCR system cleaning switched on

Switch in the middle position:
Automatic SCR system cleaning

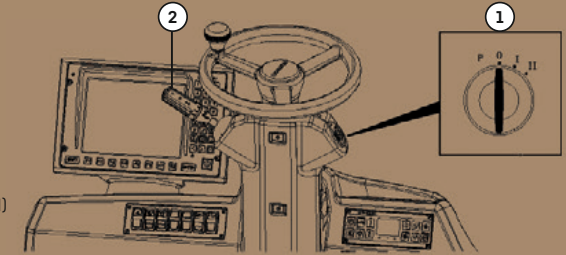
Switch pressed on the bottom:
SCR system cleaning disabled
- 5 Indicator light: High beam / turn signal light



* depends on engine emission stage

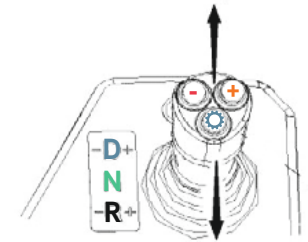
Ignition switch

- 1 Engine start / engine stop
- 2 Steering column switch
Low beam / high beam
Headlight flasher
Turn signal indicator (left / right)
Windshield wiper operation (0, interval, I, II)
Window washer system
Operation horn



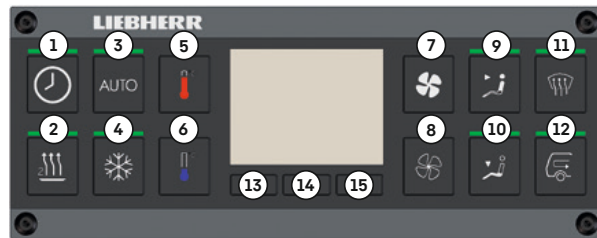
Driving switch

1. Preselection of travel direction **D**: „Forward“, in relation to the crane carrier
2. Preselection of travel direction **N**: Neutral position
3. Preselection of travel direction **R**: „Reverse“, in relation to the crane carrier
4. Manual / Automatic gearbox
5. Engine brake on +
6. Engine brake off -



Climate control

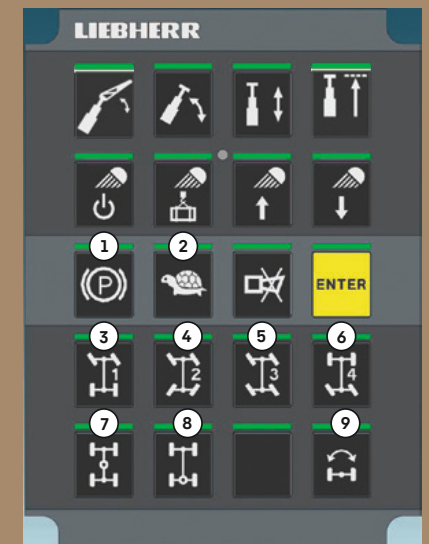
- 1 Timer
- 2 Auxiliary heater crane cab / engine preheating**
- 3 Automatic operation
- 4 Climate control system
- 5 Increase temperature
- 6 Decrease temperature
- 7 Increase fan speed
- 8 Decrease fan speed
- 9 Air distribution for head area
- 10 Air distribution for floorboard area
- 11 Front window defrosting
- 12 Recirculating air
- 13 - 15 Programming buttons timer



**optional

Keyboard right

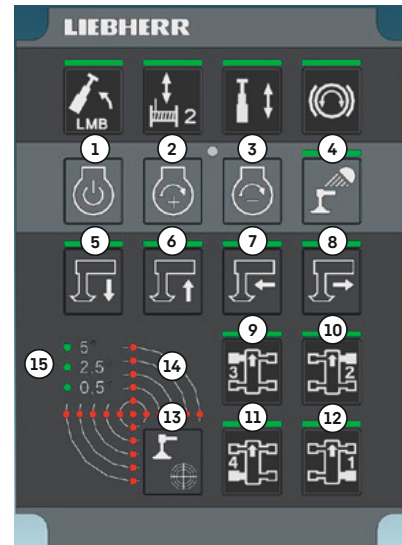
- 1 Parking brake
- 2 Travel gear: Creeper gear
- 3 Steering program: Front axle steering
- 4 Steering program: All-wheel steering
- 5 Steering program: Crab steering
- 6 Steering program: Rear axle steering
- 7 All-wheel drive
- 8 Transverse differential lock
- 9 Axle oscillation



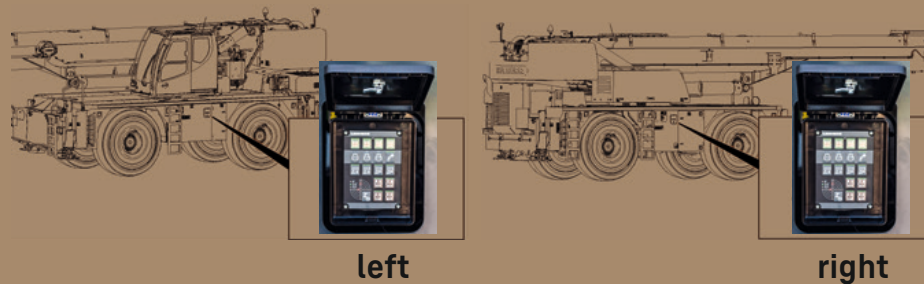
Support

- ① Engine start / engine stop
- ② Increase engine rpm
- ③ Reduce engine rpm
- ④ Sliding beam illumination
- ⑤ Extend support cylinders
- ⑥ Retract support cylinders
- ⑦ Extend sliding beam
- ⑧ Retract sliding beam
- ⑨ Select support 3 front left
- ⑩ Select support 2 front right
- ⑪ Select support 4 rear left
- ⑫ Select support 1 rear right
- ⑬ Automatic leveling mode
- ⑭ Digital level gauge
- ⑮ Scale of digital level gauge

Keyboard left



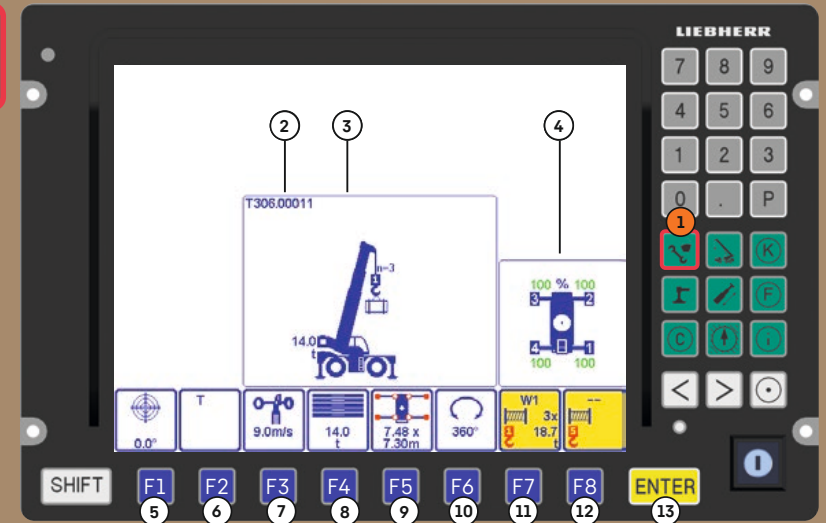
Support control unit



left

right

Set up program



- | | |
|-----------------------------|---|
| ① Set up program | ⑧ Counterweight |
| ② Chart name (chart number) | ⑨ Support base |
| ③ Graphic display | ⑩ Slewing range |
| ④ Support display | ⑪ Reaving main boom pulley head |
| ⑤ Maximum angle | ⑫ Reaving equipment |
| ⑥ Operating mode | ⑬ ENTER key
(confirmation of set up configuration) |
| ⑦ Maximum wind speed | |

Master switch left

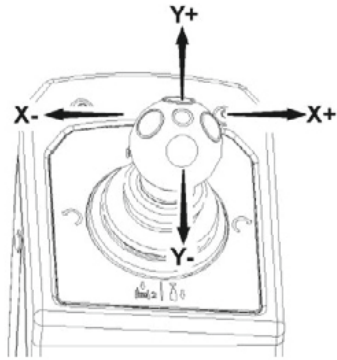
Y+ Spool winch 2 out /
Telescope the telescopic boom out*

Y- Spool winch 2 up /
Telescope the telescopic boom in*

X- Turn the crane superstructure to the left

X+ Turn crane superstructure to the right

* See master switch right + left preselection



Master switch right

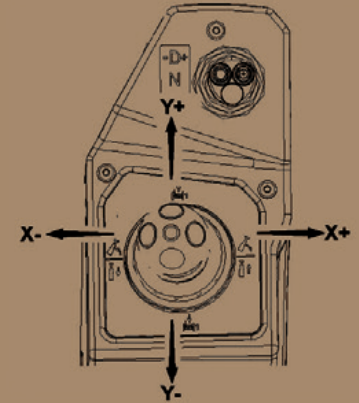
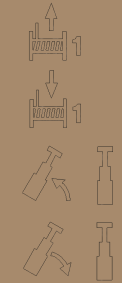
Y+ Spool winch 1 out

Y- Spool winch 1 up

X- Luff telescopic boom up /
Telescope telescopic boom in*

X+ Luff telescopic boom down /
Telescope telescopic boom out*

* See master switch right + left preselection



Keyboard units – preselection

① Select hydraulic folding jib crane movement

② Preselect luffing crane movement

③ Preselect telescoping crane movement

④ Telescoping mode:

LED on: Longer boom (larger radius) with reduced load.

LED off: Reduced boom length (medium radius) with higher load

⑤ Turn floodlight on / off**

⑥ Load following floodlight**

⑦ Swing the floodlight up**

⑧ Swing the floodlight down**

⑨ Luffing in with suspended load

⑩ Preselect spooling winch 2 crane movement

⑪ Preselect telescoping crane movement

⑫ Slewing gear brake

**optional

Keyboard unit right



Keyboard unit left



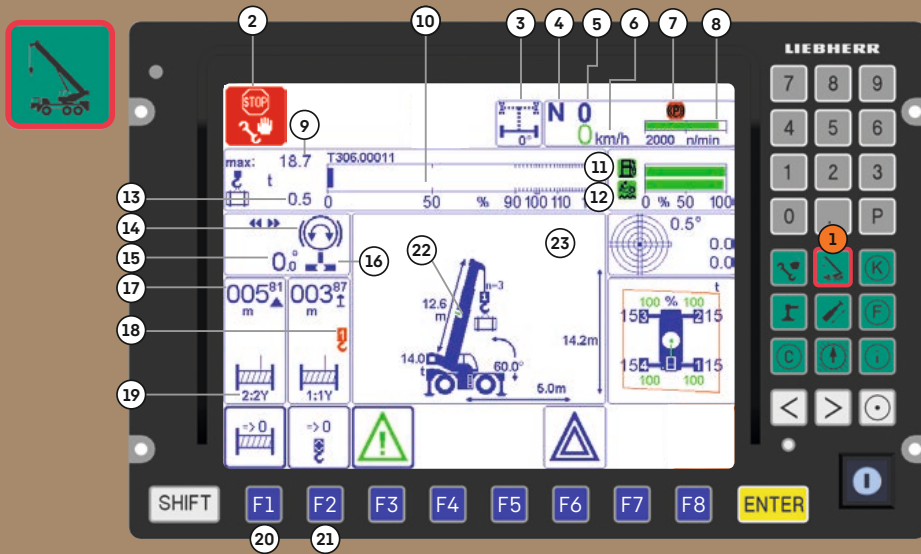
Operating and control unit

- ① "Front" window washer system
- ② "Roof" window washer system
- ③ Release button
- ④ Extend platform
- ⑤ "Front" window wiper
- ⑥ "Roof" window wiper
- ⑦ Interior light cab
- ⑧ Retract platform
- ⑨ Floodlight 1 front of turntable
- ⑩ Unpin turntable lock
- ⑪ Cabine tilt up
- ⑫ Airplane warning
- ⑬ Floodlight 2 front of turntable
- ⑭ Automatic turntable lock centering and locking
- ⑮ Cabin tilt down
- ⑯ Hydraulic oil preheating**
- ⑰ Floodlight winch
- ⑱ Hoist counterweight
- ⑲ Slewing gear freely rotating
- ⑳ ECO mode operating mode
- ㉑ Floodlight rear view camera
Floodlight camera right side of turntable**
- ㉒ Lower counterweight
- ㉓ Automatic ballasting

**optional

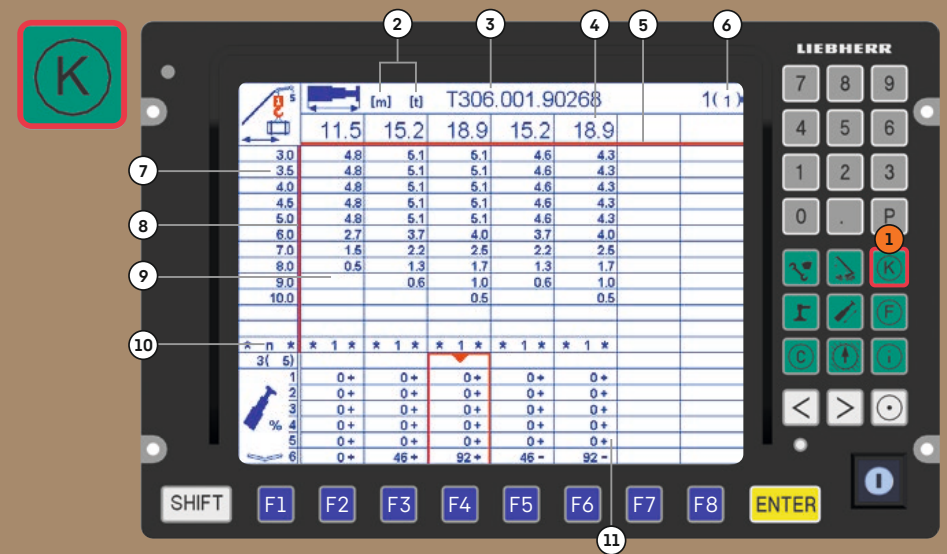


Crane operation program



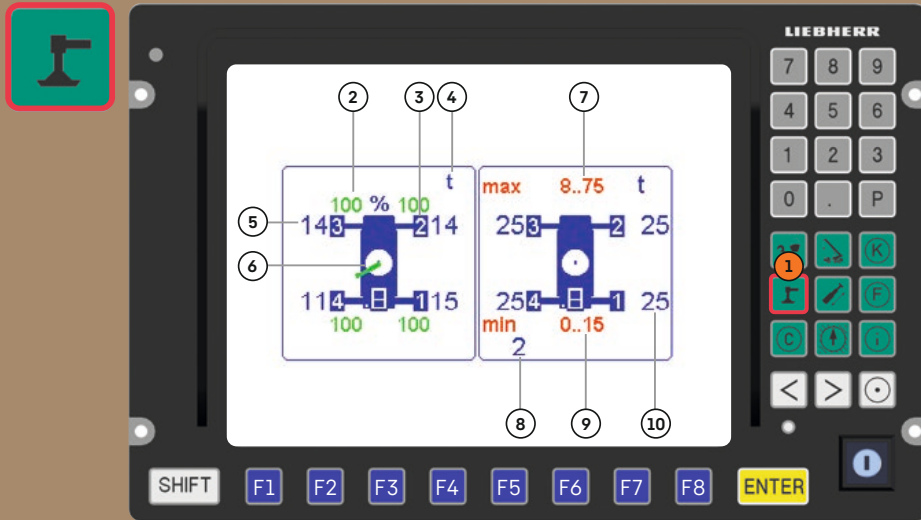
- ① Crane operation program
- ② LMB STOP during travel operation
(driving without confirmed set up configuration)
- ③ Rear axle steering monitoring indicator
- ④ Driving direction preselection
- ⑤ Gear indicator
- ⑥ Current travel speed
- ⑦ Parking brake monitoring indicator
- ⑧ Engine rpm
- ⑨ Maximum load
- ⑩ Utilization bar diagram
- ⑪ Fuel reserve display
- ⑫ Urea reserve display
- ⑬ Current load
- ⑭ Slewing gear brake
- ⑮ Turntable rotation angle
- ⑯ Turntable lock
- ⑰ Display hook path / hook height
- ⑱ Winch assignment
- ⑲ Master switch winch assignment
- ⑳ Display reset hook path
- ㉑ Display reset hook height
- ㉒ Telescopic boom pinning status
- ㉓ Graphic display

Chart view program



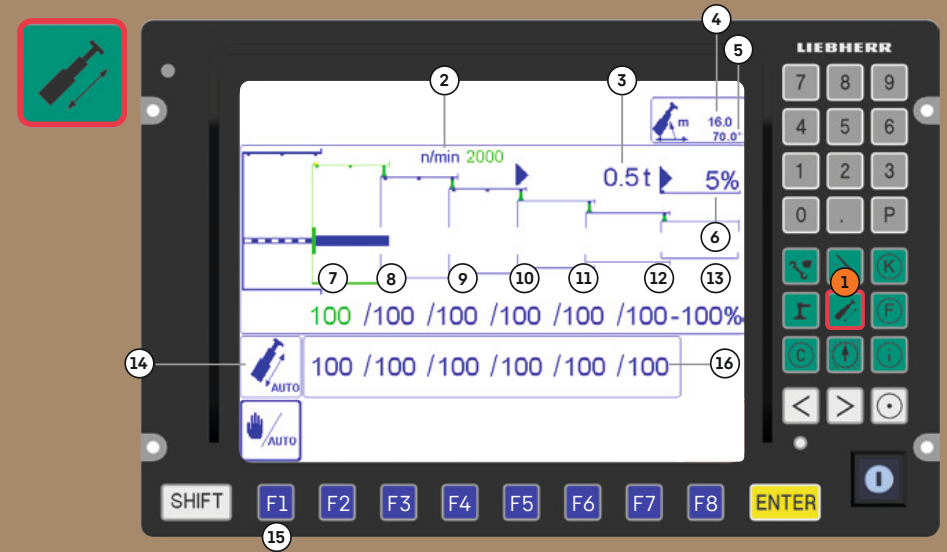
- ① Chart view program
- ② Units of measure
- ③ Chart name
- ④ Telescopic boom lengths
- ⑤ Horizontal orientation display
- ⑥ Page counter
- ⑦ Boom radius
- ⑧ Vertical orientation display
- ⑨ Load value field
- ⑩ Reeving number of hoist rope
- ⑪ Extension condition of telescopic sections

Support force monitoring program



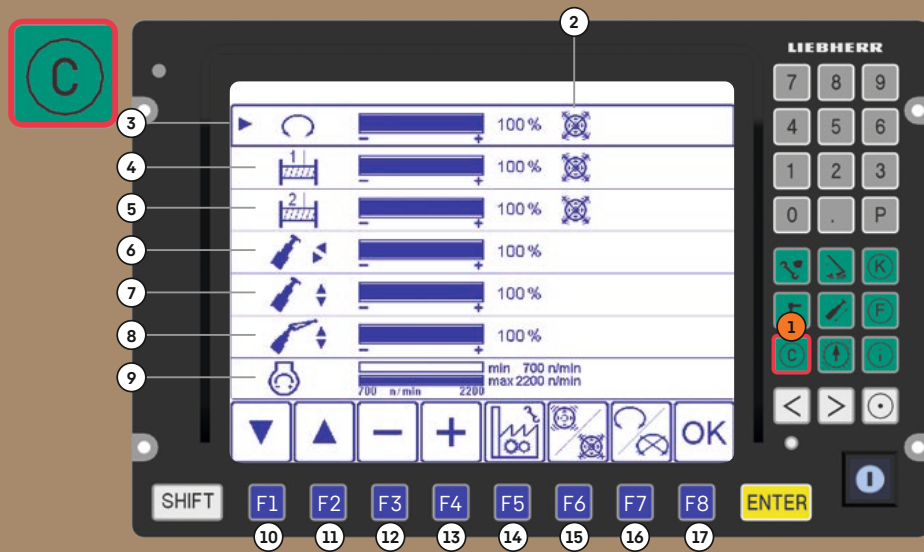
- ① Support force monitoring program
- ② Sliding beam extension condition
- ③ Support cylinder numbering
- ④ Weight unit
- ⑤ Current support force display
- ⑥ Telescopic boom alignment
- ⑦ Maximum support force range
- ⑧ Set minimum support force
- ⑨ Minimum support force range
- ⑩ Set maximum support force

Telescoping program



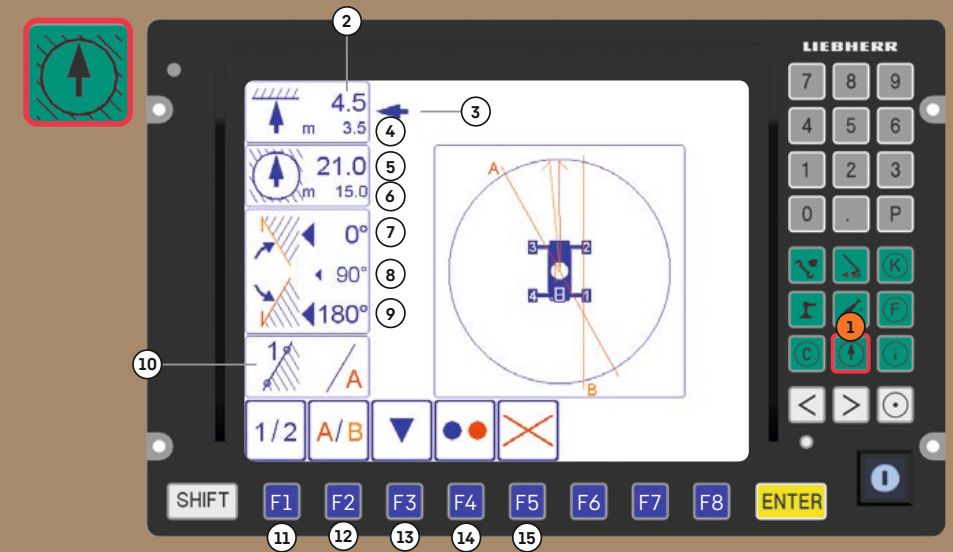
- ① Telescoping program
- ② Engine rpm
- ③ Current load
- ④ Boom radius
- ⑤ Main boom angle
- ⑥ Current crane utilization
- ⑦ Current extension condition of telescope 1
- ⑧ Current extension condition of telescope 2
- ⑨ Current extension condition of telescope 3
- ⑩ Current extension condition of telescope 4
- ⑪ Current extension condition of telescope 5
- ⑫ Current extension condition of telescope 6
- ⑬ Extension condition of telescoping cylinder
- ⑭ Telescoping status display (automatic / manual)
- ⑮ Switch between automatic and manual telescoping operation
- ⑯ Telescoping targets

Control parameter program



- | | |
|---|--|
| ① Control parameter program | ⑨ Engine rpm / ECO mode setting |
| ② Activate / deactivate display vibration sensor on master switch | ⑩ Move the function selector down |
| ③ Slew gear speed reduction as a % | ⑪ Move the function selector up |
| ④ Winch 1 speed reduction as a % | ⑫ Reduction of the selected value |
| ⑤ Winch 2 speed reduction as a % | ⑬ Increase of the selected value |
| ⑥ Telescoping speed reduction as a % | ⑭ Reset to default settings |
| ⑦ Luffing speed reduction as a % 8. | ⑮ Activate / deactivate vibration sensor |
| ⑧ Speed reduction for luffing additional jib in % | ⑯ Lock/Release winch 1 or winch 2 |
| | ⑰ Take over the set values |

Working range limitation program



- | | |
|--------------------------------------|--|
| ① Working range limitation program | ⑨ Left limit angle |
| ② Pulley head height limit value | ⑩ Edge limitation |
| ③ Function selector | ⑪ Selection of point 1 + 2 of the selected edges |
| ④ Current pulley head height | ⑫ Selection of edges to be programmed |
| ⑤ Maximum working radius limit value | ⑬ Move the function selector |
| ⑥ Current working radius | ⑭ Individual limitation function ON / OFF |
| ⑦ Right limit angle | ⑮ All limitation functions OFF |
| ⑧ Current turntable slewing angle | |

BSE test system program



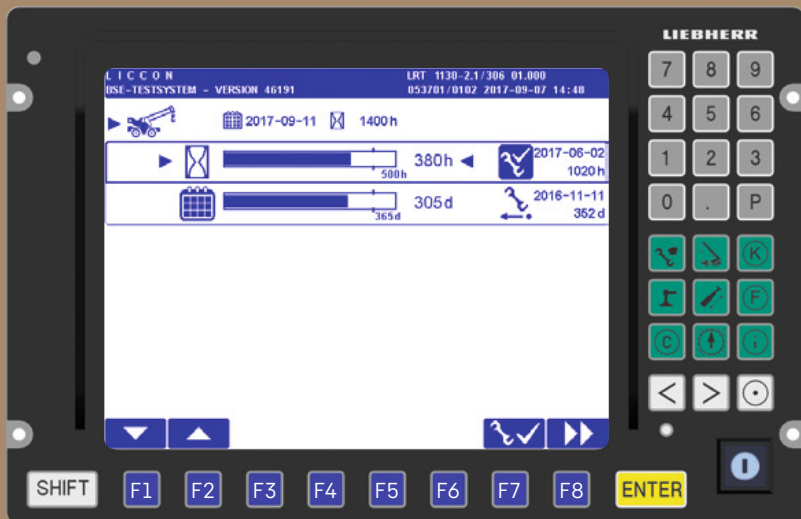
1
BSE test system program
 (test system for LICCON control)
 – see the Diagnostics manual

2
Service System menu



Service System menu (crane maintenance indicators)

– see the service book



Subject to modifications

Liebherr-Werk Eching GmbH
 Postfach 1361 · 89582 Eching, Germany
 Phone +49 73 91 5 02-0 · www.liebherr.com

Proposition 65	
	<p>WARNING: This product can expose you to chemicals, including exhaust emissions, including lead and lead compounds, which are known to the State of California to cause cancer, birth defects or other reproductive harm.</p> <p>For more information see: www.P65warnings.ca.gov/diesel</p>