
81 K.1

EN 14439:2009 – C25
Technical Data

LIEBHERR

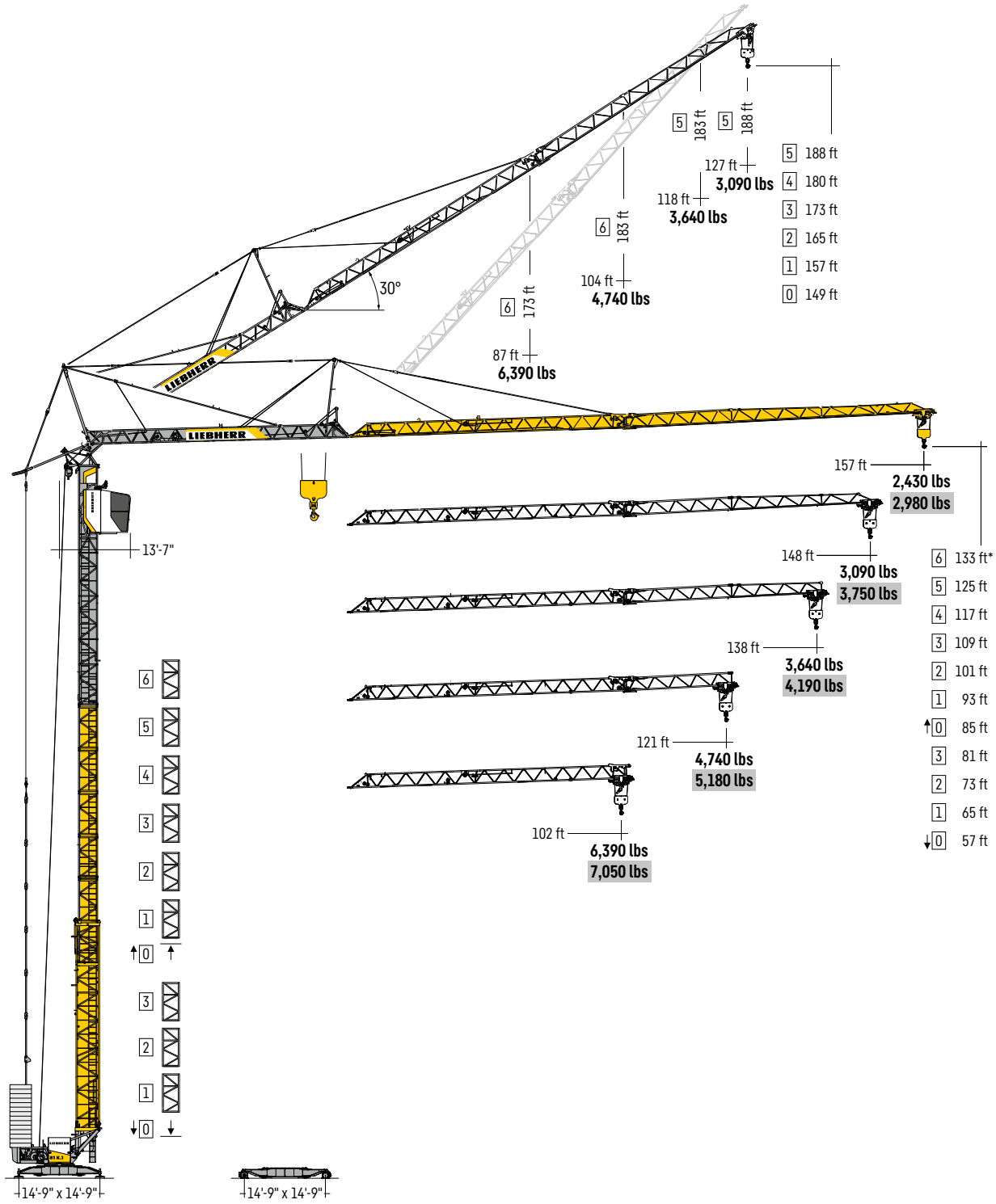
Tower Cranes

CE | UK
CA

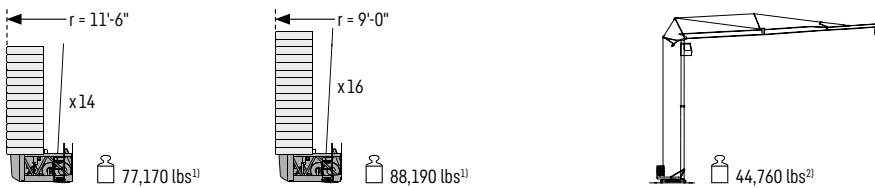
81 K.1

Crane operation and transport · Accionamiento de grúa y transporte.....	04
Weights · Pesos.....	04
Radius and capacity · Alcances y cargas.....	06
Driving units · Mecanismos	06
Erection procedure · Procedimiento de montaje	07
Packing List · Lista de contenido	07

Crane operation and transport - Accionamiento de grúa y transporte

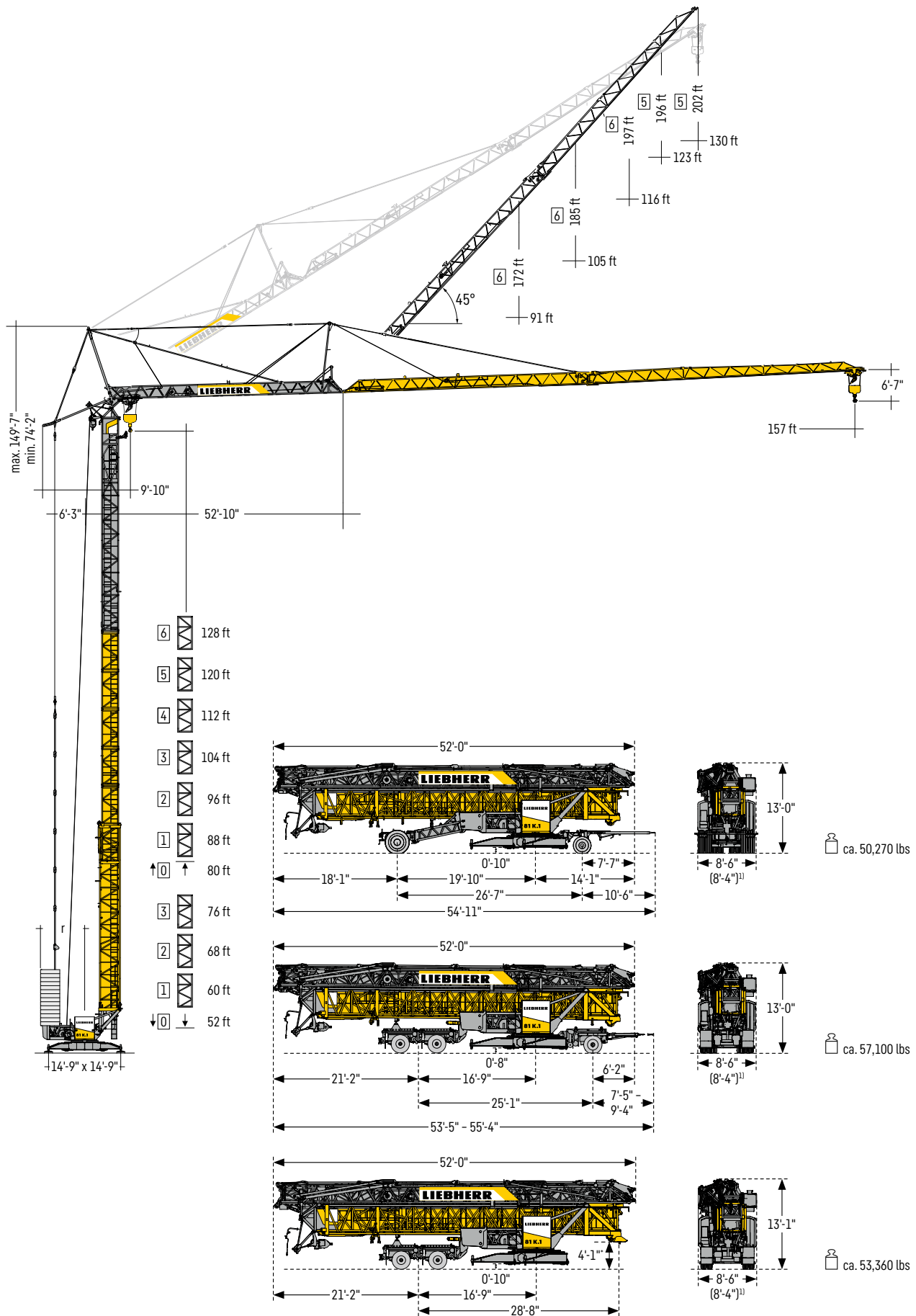


Weights - Pesos



¹⁾ See instruction manual. - Ver manual de instrucción.

²⁾ Without counterweights - Sin lastre



Radius and capacity - Alcances y cargas

Load-Plus

ft	ft	lbs	ft															
			39	49	59	69	75	82	89	95	102	108	115	121	131	138	148	157
157	10 - 39	13,230	13,230	10,650	8,880	7,580	6,880	6,310	5,800	5,360	4,980	4,650	4,340	4,080	3,730	3,510	3,220	2,980
148	10 - 44	13,230	13,230	11,820	9,920	8,530	7,780	7,140	6,590	6,110	5,690	5,310	4,980	4,700	4,300	4,060	3,750	
138	10 - 46	13,230	13,230	12,430	10,380	8,880	8,090	7,430	6,830	6,330	5,890	5,510	5,160	4,850	4,430	4,190		
121	10 - 50	13,230	13,230	12,330	11,110	9,500	8,660	7,940	7,320	6,770	6,310	5,890	5,510	5,180				
102	10 - 53	13,230	13,230	12,330	12,060	10,410	9,520	8,770	8,130	7,560	7,050							

→ lbs

LM 1

ft	ft	lbs	ft															
			39	49	59	69	75	82	89	95	102	108	115	121	131	138	148	157
157	10 - 39	13,230	13,230	10,190	8,220	6,860	6,150	5,580	5,070	4,650	4,280	3,970	3,680	3,420	3,110	2,910	2,650	2,430
148	10 - 44	13,230	13,230	11,510	9,330	7,800	7,010	6,370	5,820	5,340	4,920	4,560	4,230	3,970	3,590	3,370	3,090	
138	10 - 46	13,230	13,230	12,280	9,960	8,360	7,520	6,810	6,220	5,710	5,290	4,890	4,560	4,250	3,860	3,640		
121	10 - 50	13,230	13,230	12,330	10,870	9,150	8,250	7,500	6,860	6,330	5,840	5,420	5,070	4,740				
102	10 - 53	13,230	13,230	12,330	11,840	9,960	8,990	8,180	7,500	6,900	6,390							

→ lbs

Jib position 30° - Posición de la pluma 30

ft	ft	lbs	ft															
			39	46	52	59	66	72	82	87	92	98	104	108	115	118	121	127
148	10 - 52	6,610	6,610	6,610	6,550	6,020	5,560	5,160	4,630	4,410	4,190	3,950	3,750	3,620	3,420	3,310	3,220	3,090
138	10 - 58	6,610	6,610	6,610	6,530	6,040	5,600	5,050	4,810	4,590	4,320	4,100	3,950	3,750	3,640			
121	10 - 70	6,610	6,610	6,610	6,610	6,420	5,800	5,530	5,290	4,980	4,740							
102	10 - 83	6,610	6,610	6,610	6,610	6,610	6,390											

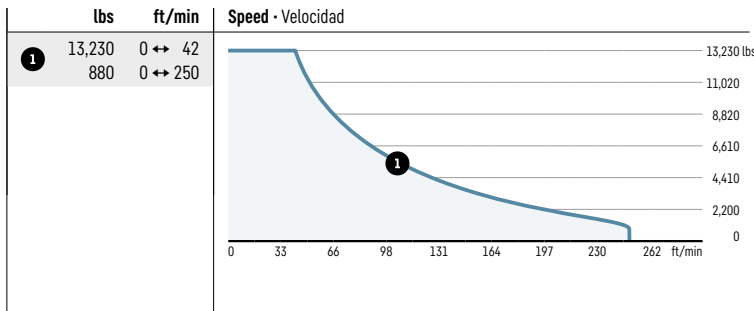
→ lbs

Load-Plus = Variant speeds and service conditions. - Otras velocidades y características de funcionamiento.

Driving units - Mecanismos

15 kW FC

stepless
sin escalones

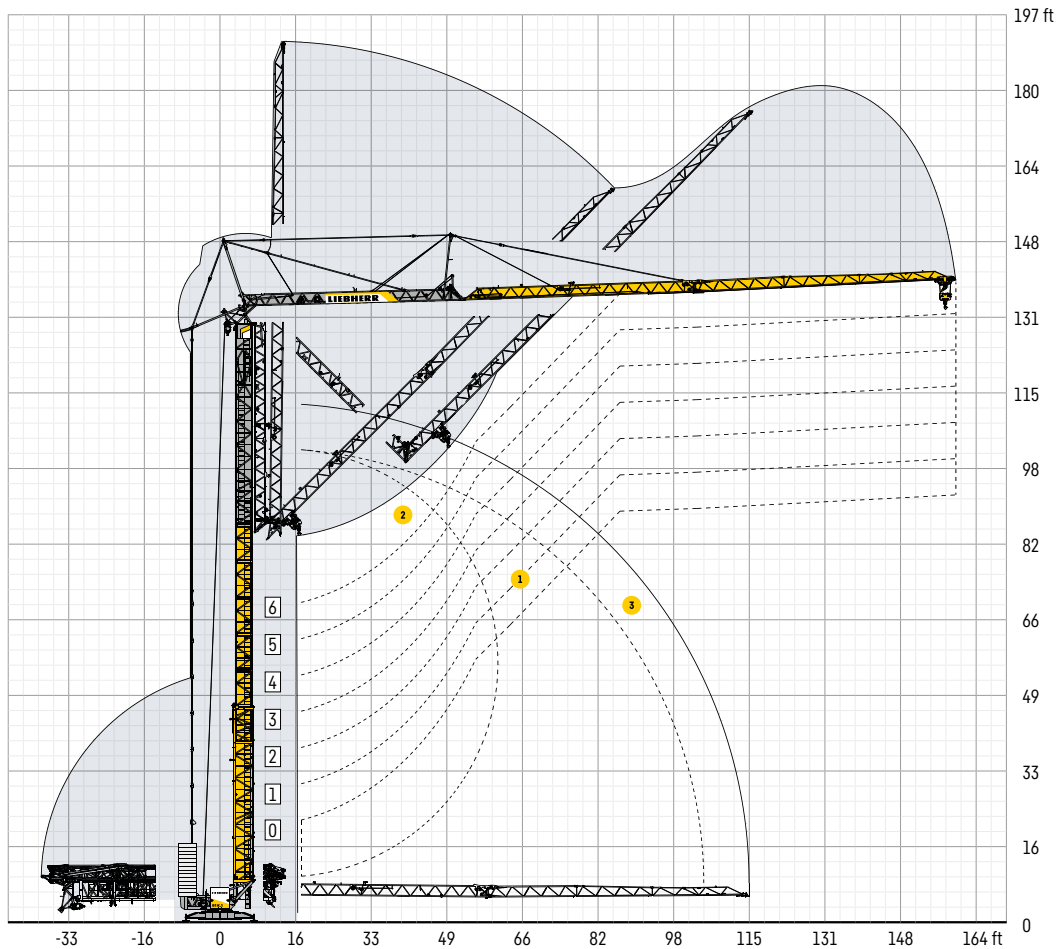


Power Requirements¹⁾

- 480 V/60 Hz**
- 480 V phase-phase
 - 277 V phase-ground
 - 120° phase shift
 - 30 A fused disconnect (max.)
- Minimum generator size: 45 kW**
- Supply cable**
- 3 hot + ground
 - 1x4x11 AWG
 - 377 ft max.
- Transformers**
- do not use "open-delta"

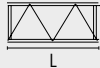

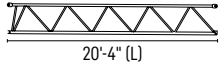
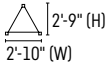
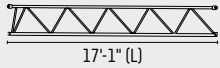
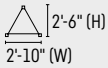
0 ↔ 0.8 rpm 5.0 kW FC	0 ↔ 197 ft/min 3.0 kW FC	0 ↔ 82 ft/min 2 x 2.2 kW FC	0 - 45°, 110 sec. 3.0 kW FC	380 - 480 V	50 - 60 Hz 22.0 kVA (FC)

Erection procedure - Procedimiento de montaje



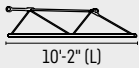

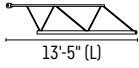



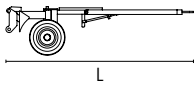


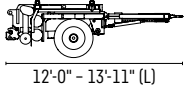

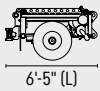

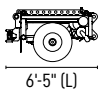

- 1 Standard erecting curves from 0 to 6 tower sections (148 ft) - Curvas de montaje estándar (0 - 6 tramos de torre) (148 ft)
- 2 Elevated erecting curve (+15 ft) using the example of 6 tower sections (148 ft) - Curva de montaje elevada (+15 ft): ejemplo con 6 tramos (148 ft)
- 3 Erecting curve 157 ft radius - Curva de montaje 157 ft alcances

Packing List - Lista de contenido

I ₁	Q ₁	Description - Descripción				
1	4	Tower section (without/with tower support*)				
2	2'	Tramo de torre (sin/con soporte de torre)	L	W	H	lbs
			8'-2"	3'-7"	3'-7"	1,110
			8'-2"	3'-7"	3'-7"	1,330'
3	1	Jib extension 102 ft - 121 ft Prolongación de pluma				
			20'-4" (L)	2'-10" (W)	2'-9" (H)	
			710 lbs			
4	1	Jib extension 121 ft - 138 ft Prolongación de pluma				
			17'-1" (L)	2'-10" (W)	2'-6" (H)	
			360 lbs			

¹¹ See instruction manual. - Ver manual de instrucción.

I₁ = Item - Posición Q₁ = Quantity - Cantidad

I _i	Q _i	Description · Descripción			
5	1	Jib extension 138 ft – 148 ft Prolongación de pluma		10'-2" (L)	2'-0" (H) 2'-10" (W)
				180 lbs	
6	1	Jib extension 148 ft – 157 ft Prolongación de pluma		13'-5" (L)	2'-0" (H) 2'-10" (W)
				200 lbs	
7	1	Cabin · Cabina		8'-8" (L)	8'-2" (H) 6'-7" (W)
				1,990 lbs	
8	1	Road transport axle front Eje delantero para transporte		L	W H
				L	W
					H
					lbs
		Tra 100 KY 6		12'-0" - 13'-7"	4'-9"
		Tra 100 KY 6 A			3'-7"
					2,030
					2,030
9	1	Road transport axle behind Eje trasero para transporte		6'-3" (L)	3'-5" (H) 8'-2" (W)
				2,430 lbs	
10	1	Road transport axle front LiTRAX HS-121 Eje delantero para transporte		12'-0" - 13'-11" (L)	3'-9" (H) 6'-11" (W)
				4,190 lbs	
11	1	Road transport axle behind LiTRAX HS-122 (without steering) Eje trasero para transporte (sin sistema de dirección)		6'-5" (L)	3'-7" (H) 8'-2" (W)
				3,530 lbs	
12	1	Road transport axle behind LiTRAX HS-123 (with steering) Eje trasero para transporte (con sistema de dirección)		6'-5" (L)	3'-7" (H) 8'-2" (W)
				3,750 lbs	

I_i = Item · Posición Q_i = Quantity · Cantidad

This information is supplied without liability.

Declinamos toda responsabilidad derivada de la información proporcionada.

Subject to technical modifications!

¡Sujeto a modificaciones sin previo aviso!