
Pumping concrete perfectly

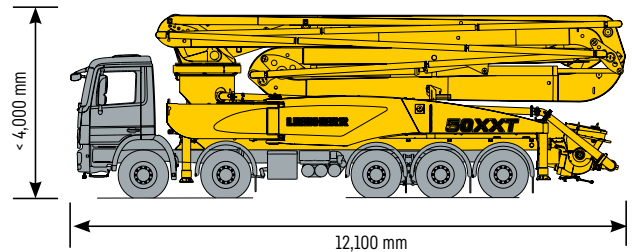
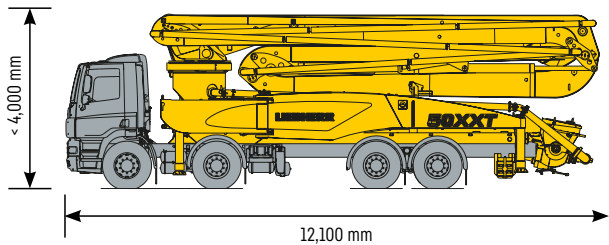
Compact with a long reach

LIEBHERR

50 XXT truck mounted concrete pump



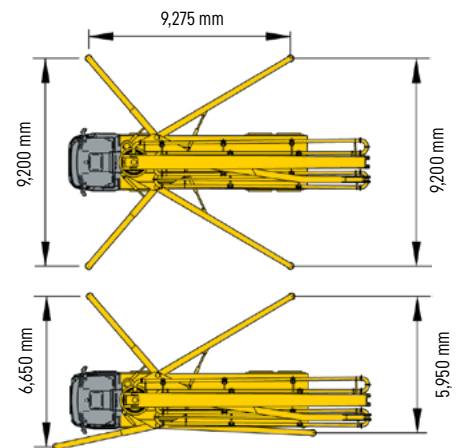
Technical data 50 XXT



Standard version, dimensions and total weight may change depending on pump type and chassis.

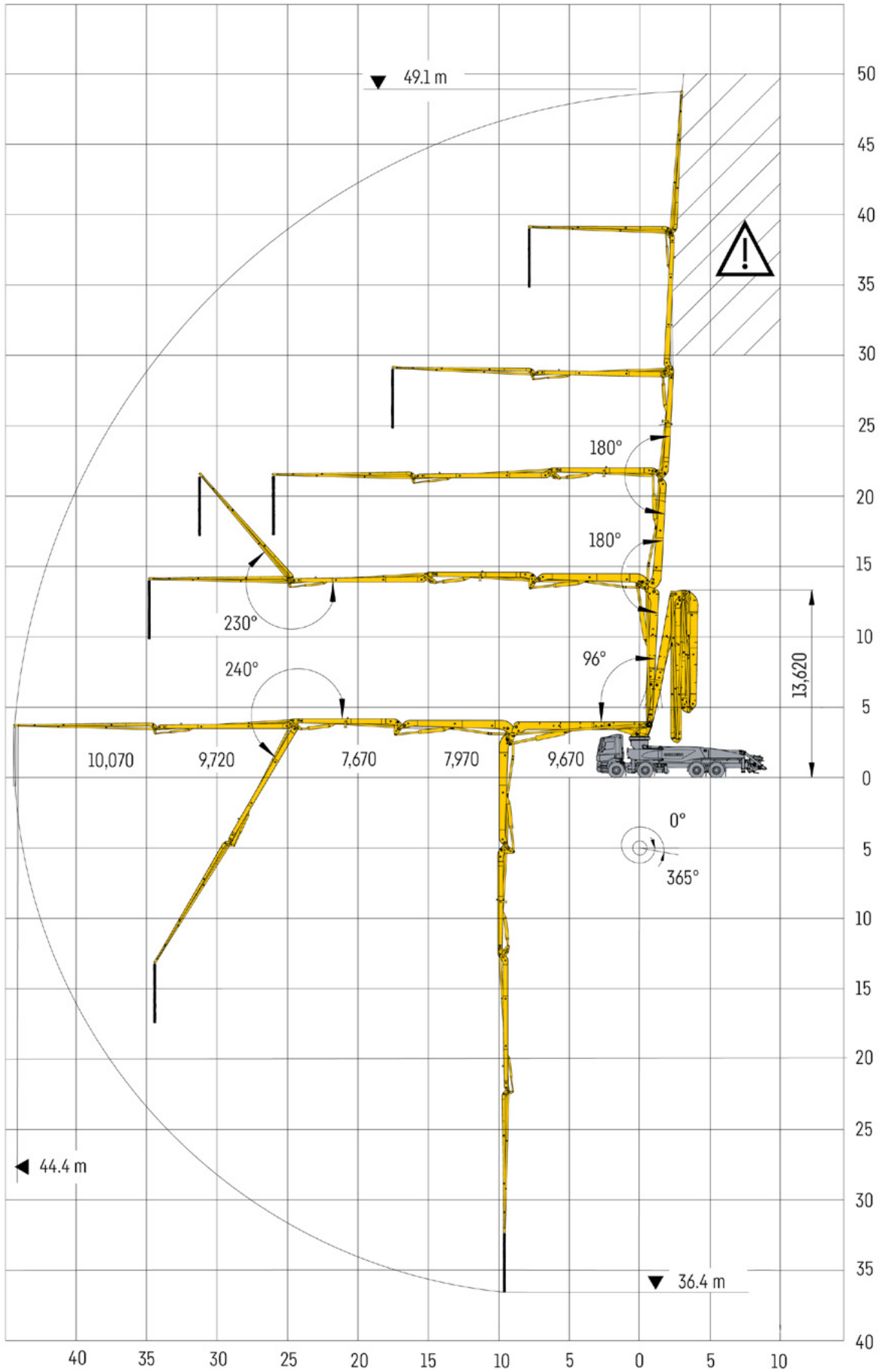
Technical data*

Boom	50 M5
Vertical range	49.1 m
Horizontal range	44.4 m
Unfolding height	13.7 m
Swivel range	365°
Angle range of arm 1	96°
Angle range of arm 2	180°
Angle range of arm 3	180°
Angle range of arm 4	240°
Angle range of arm 5	230°
Conveyor line diameter	125 mm
End hose length	4 m
Voltage	24 V



Concrete pump	140H	170H
Max. flow rate (rod end)	138 m ³ /h	163 m ³ /h
Max. concrete pressure (rod end)	80 bar	80 bar
Pump cycles (rod end)	28 min ⁻¹	32 min ⁻¹
Conveyor cylinder Ø x stroke	230 mm x 2000 mm	230 mm x 2000 mm
Concrete conveying volume / double stroke	166 L	166 L
Max. hydraulic pressure	320 bar	320 bar
Drive cylinder	140 mm / 80 mm / 2000 mm	140 mm / 80 mm / 2000 mm
Hopper capacity	600 L	600 L
Noise emission (L _{WA})	119 dB	119 dB

* Theoretical performance, actual performance may vary



We are here for you!

Personal. Capable. Reliable.



Concrete pumps



Mixing plants



Truck mixers



Conveyor belts



Measuring technology



Mixing systems



Concrete recycling systems

Your powerful partner.

- Delivery and instruction by experienced service technicians
- Worldwide service network with over 90 service centres
- Technical support worldwide
- Fast availability of spare parts
- Professional maintenance and services

Liebherr-Mischtechnik GmbH • Postbox 145 • 88427 Bad Schussenried, Germany
+49 7583 949-0 • www.liebherr.com • E-Mail: info.lmt@liebherr.com

Get your
contact

