
R 938 Litronic

LIEBHERR

Crawler excavator



Generation

7

Operating weight

36,800–39,550 kg

Engine

220 kW / 299 HP

Tier 4 Final

Bucket capacity

1.00–3.00 m³

Experience the progress R 938

① Safety

- Panoramic visibility with no obstructions and camera on the rear and the right side
- Tilttable console for easy and safe access to cab
- Emergency exit via the rear cab window whatever the configuration of the excavator
- Right window and windshield in laminated and tinted glass

② Equipment

- Choice of 2 types of booms and multiple lengths of equipment
- Longer lifespan of components thanks to a grouping of the lubrication points as standard
- Safety check valves for hoist and stick cylinders (option)

③ Maintenance

- Innovative servicing concept, with service points accessible from ground level
- Engine oil, hydraulic oil and fuel levels visible on the display

④ Comfort

- Spacious, air-conditioned work space
- Mechanical seat with vertical suspension as standard
- Easy-to-use high resolution 9" colour touchscreen
- Completely retractable front cab window
- LED lighting as standard



⑤ Engine

- Liebherr engine that conforms with the US EPA Tier 4 Final exhaust emissions standard
- Automatic engine idling and engine stop

⑥ Undercarriage

- Choice of 2 different robust and reliable X-shaped undercarriages with integrated eyes for secure transport
- Easy maintenance
- Maintenance-free track chains and track rollers with lifetime lubrication



Technical data



Engine

Rating per ISO 9249	220kW (299 HP) at 1,800RPM
Torque	1,421 Nm at 1,350RPM
Model	Liebherr D944 A7-24
Type	4 cylinder in-line
Bore	130 mm
Stroke	150 mm
Displacement	8.0l
Engine operation	4-stroke diesel Common-Rail Turbo-charged and after-cooler
Exhaust gas treatment	Tier 4 Final DOC + SCR Passive regeneration by thermo management
Cooling system	Water-cooled and oil cooler, after-cooled and fuel cooled
Air cleaner	Dry-type air cleaner with pre-cleaner
Fuel tank	729 l
Urea tank	90 l
Electrical system	
Voltage	24 V
Batteries	2 x 135 Ah / 12 V
Alternator	Three-phase current 28 V / 140 A
Engine idling	Sensor controlled



Hydraulic controls

Power distribution	Via control valves, simultaneous and independent actuation of undercarriage, swing drive and equipment
Electric servo circuit	Electro-hydraulic control
Equipment and swing	Proportional via joystick levers
Travel	- Proportional control via foot pedals or removable levers - Automatic or manual speed adjustment
Additional functions	Proportional regulation via foot pedals or mini-joystick



Hydraulic system

Hydraulic system	Positive Control hydraulic system. Demand-based, double independent pump flows Features high system dynamics and sensitivity provided by integrated system controlling Independent circuit for rotation
Hydraulic pumps	
For equipment and travel drive	Liebherr, variable displacement, swashplate double pump
Max. flow	2 x 315 l/min.
Max. pressure	380 bar
For swing drive	Swashplate pump, closed-loop circuit
Max. flow	205 l/min.
Max. pressure	400 bar
Pump management	Electronic management synchronous to the control block
Hydraulic tank	239 l
Hydraulic system	max. 475 l
Filtration	1 main return filter with integrated partial micro filtration (10 µm)
Cooling system	Compact cooler, consisting of a water cooler, with hydraulic oil cooler, gearbox oil cooler, fuel cooler and after-cooler cores and hydrostatically driven fan
MODE selection	Adjustment of engine and hydraulic performance via a mode pre-selector to match application, e.g. for especially economical and environmentally friendly operation or for maximum digging performance and heavy-duty jobs
Engine speed and performance setting	Stepless adjustment of engine output and hydraulic power via engine speed



Swing drive

Drive	Liebherr swashplate motor with integrated brake valve and torque control
Transmission	Liebherr compact planetary reduction gears
Swing ring	Liebherr, sealed race ball bearing swing ring, internal teeth
Swing speed	0-8.6 RPM stepless
Swing torque	117 kNm
Holding brake	Wet multi-disc (spring applied, pressure released)



Cab

Cab	ROPS safety cab structure optional (roll-over protection system according to ISO 12117-2:2008) with windscreen, totally or partially retractable (only upper part), under cab roof, LED work headlights integrated in the ceiling, a door with a sliding window (can be opened on both sides), large storing box and several stowing possibilities, shock-absorbing suspension, laminated right hand side and roof windows, all windows tinted, separate extensible window shades for the sunroof window and windscreen, cigarette lighter and 24 V plug, cup holder, mobile phone storage net
Operator's seat	Liebherr-Standard seat, mechanically suspended with weight adjustment, vertical seat damping including consoles and joysticks. Seat and armrests adjustable separately and in combination (adjustable in length, height, and inclination)
Option	Liebherr-Comfort seat, airsprung with automatic weight adjustment, vertical and longitudinal seat damping including consoles and joysticks, with seat heating
Arm consoles	Oscillating consoles with seat, tilttable console left
Operation and displays	Large high-resolution operating unit, intuitive, colour display with touchscreen, video-compatible, numerous setting, control and monitoring options, e.g. air conditioning control, fuel consumption, machine and attachment parameters
Air-conditioning	Automatic air-conditioning, recirculated air function, fast de-icing and demisting at the press of a button, air vents can be operated via a menu. Recirculated air and fresh air filters can be easily replaced and are accessible from the outside. Heating-cooling unit, designed for extreme outside temperatures, sensors for solar radiation, inside and outside temperatures
Noise emission	
ISO 6396	80 dB(A) = L _{PA} (inside cab)
2000/14/EC	107 dB(A) = L _{WA} (surround noise)



Undercarriage

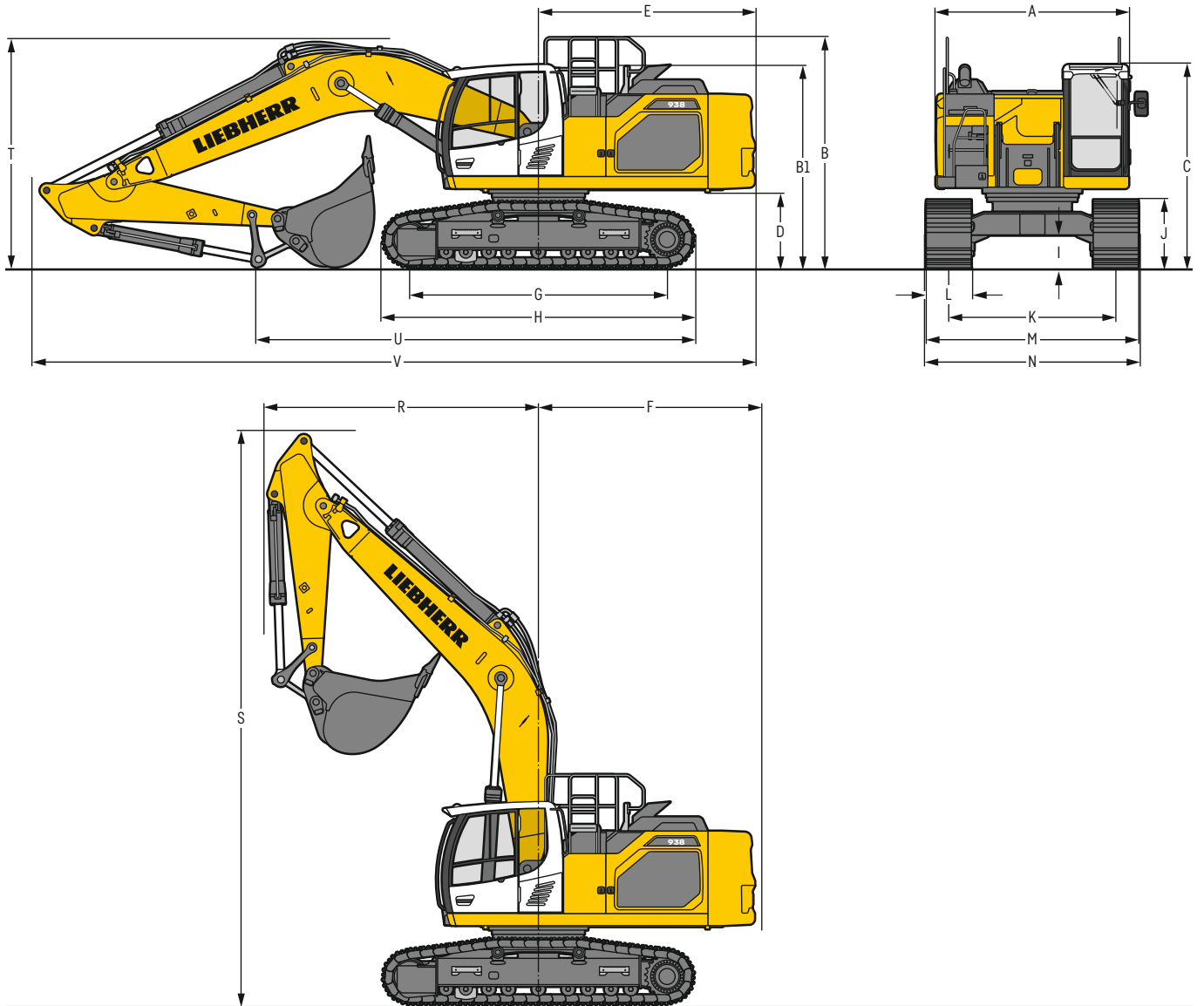
Versions	
LC	Gauge 2,590 mm
WLC	Gauge 2,740 mm
Drive	Liebherr swashplate motor with brake valves on both sides
Transmission	Liebherr planetary reduction gear
Maximum travel speed	3.3 km/h low range 5.4 km/h high range
Drawbar pull on crawler	325 kN
Track components	D7, D7G, maintenance-free
Track rollers / Carrier rollers	9 / 2
Tracks	Sealed and greased
Track pads	Triple grouser
Holding brake	Wet multi-disc (spring applied, pressure released)
Brake valves	Integrated into travel motor
Lashing eyes	Integrated



Equipment

Type	Combination of resistant steel plates and cast steel components
Hydraulic cylinders	Liebherr cylinders with seal and guidance systems
Bearings	Sealed, low maintenance
Lubrication	Liebherr central lubrication system
Hydraulic connections	Pipes and hoses equipped with SAE split-flange connections
Buckets	Standard equipped with Liebherr tooth system

Dimensions



	LC	mm				WLC	mm			
A	Uppercarriage width	2,990 ²⁾					2,990 ²⁾			
B	Uppercarriage height	3,570					3,570			
B1	Uppercarriage height (handrails folded)	3,130					3,130			
C	Cab height	3,150					3,150			
D	Counterweight ground clearance	1,175					1,175			
E	Rear-end length	3,350					3,350			
F	Tail swing radius	3,450					3,450			
G	Wheelbase	3,990					4,300			
H	Undercarriage length	4,840					5,150			
I	Undercarriage ground clearance	495					495			
J	Track height	1,055					1,055			
K	Track gauge	2,590					2,740			
L	Track pad width	600	700	800	900		600	700	800	900
M	Width over tracks	3,190	3,290	3,390	3,490		3,340	3,440	3,540	3,640
N	Width over steps	3,190	3,190	3,390 ¹⁾	3,390 ¹⁾		3,340	3,340	3,540 ¹⁾	3,540 ¹⁾

¹⁾ width with removable steps

²⁾ without door stop device and spacer

	Stick length m	Mono boom 6.45 m direct mounting			Mono boom SME 6.15 m direct mounting		
		LC	mm	WLC	LC	mm	WLC
R Front swing radius			4,250 ¹⁾		4,050		
S Height with boom up			8,900		8,700		
T Boom height	2.60		3,550		-		
	2.90		3,750		-		
	3.25		3,800		-		
	3.95		3,350 ¹⁾		-		
	2.15 SME		-		3,450 / 3,300 ¹⁾		3,350 / 3,300 ¹⁾
	2.60 SME		-		3,650 / 3,350 ¹⁾		3,950 / 3,350 ¹⁾
U Length on ground	2.60	6,800		6,950		-	
	2.90	6,500		6,650		-	
	3.25	6,050		6,200		-	
	3.95	7,800 ¹⁾		7,950 ¹⁾		-	
	2.15 SME		-		6,900 / 9,300 ¹⁾		7,000 / 9,450 ¹⁾
	2.60 SME		-		6,500 / 8,900 ¹⁾		6,800 / 9,050 ¹⁾
V Overall length	2.60		11,200				
	2.90		11,200				
	3.25		11,200				
	3.95		11,000 ¹⁾				
	2.15 SME		-		10,900 / 10,800 ¹⁾		
	2.60 SME		-		10,900 / 10,800 ¹⁾		
Bucket			2.15 m ³				2.50 m ³

¹⁾ without bucket

Transport dimensions

removable elements disassembled

	Undercarriage	Mono boom 6.45 m				Mono boom SME 6.15 m			
		mm				mm			
Pad width		600	700	800	900	600	700	800	900
Transport width	LC	3,190	3,290	3,390	3,490	3,190	3,290	3,390	3,490
	WLC	3,340	3,440	3,540	3,640	3,340	3,440	3,540	3,640

	Undercarriage/ Stick m	LC / WLC		LC / WLC	
		mm		mm	
Transport length		11,200 ²⁾ / 11,000 ^{1) 3)}		10,900 / 10,800 ¹⁾	
Transport height	2.60	3,550		-	
	2.90	3,750		-	
	3.25	3,800		-	
	3.95	3,350 ¹⁾		-	
	2.15 SME	-		3,450 ⁴⁾ / 3,300 ^{1) 4)} / 3,350 ⁵⁾ / 3,300 ^{1) 5)}	
2.60 SME	-		3,650 ⁴⁾ / 3,350 ^{1) 4)} / 3,950 ⁵⁾ / 3,350 ^{1) 5)}		
Bucket		2.15 m ³		2.50 m ³	

¹⁾ without bucket

²⁾ with sticks 2.60 m, 2.90 m and 3.25 m

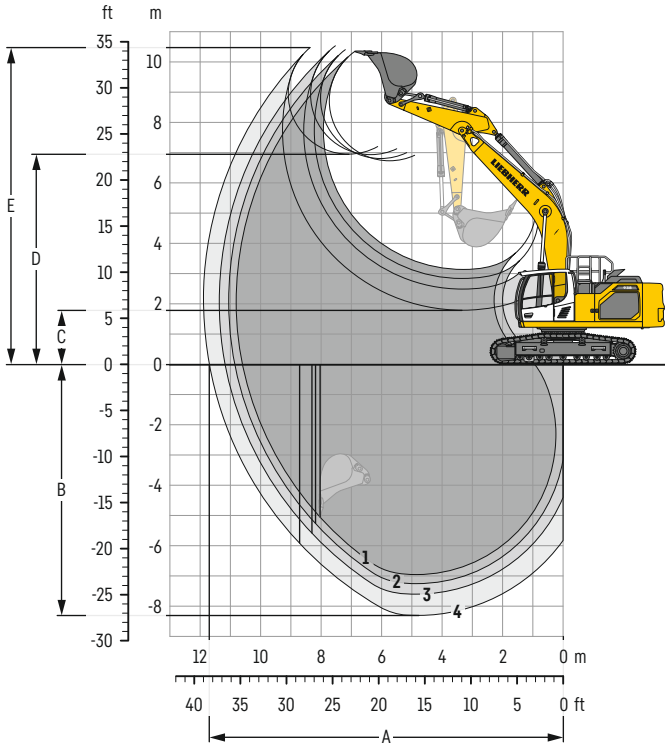
³⁾ with stick 3.95 m

⁴⁾ with LC undercarriage

⁵⁾ with WLC undercarriage

Backhoe bucket

with mono boom 6.45 m



Digging envelope

without quick coupler		1	2	3	4
Stick length	m	2.60	2.90	3.25	3.95
A Max. reach at ground level	m	10.60	10.85	11.17	11.70
B Max. digging depth	m	6.95	7.25	7.60	8.30
C Min. dumping height	m	3.14	2.84	2.49	1.79
D Max. dumping height	m	6.73	6.80	6.93	6.95
E Max. cutting height	m	10.35	10.40	10.53	10.47

Forces

without quick coupler		1	2	3	4
Stick digging force (ISO 6015)	kN	212	198	183	159
Bucket digging force (ISO 6015)	kN	238	238	238	238
Stick digging force (SAE J1179)	kN	202	189	176	154
Bucket digging force (SAE J1179)	kN	210	210	210	210

Operating weight and ground pressure

The operating weight includes the basic machine with counterweight 8.4t, mono boom 6.45 m, stick 3.25 m and bucket 2.15 m³ (1,770 kg).

Undercarriage		LC			
Pad width	mm	600	700	800	900
Weight	kg	36,800	37,150	37,500	37,850
Ground pressure	kg/cm ²	0.72	0.62	0.55	0.49

Undercarriage		WLC			
Pad width	mm	600	700	800	900
Weight	kg	37,350	37,700	38,050	38,450
Ground pressure	kg/cm ²	0.68	0.59	0.52	0.46

The operating weight includes the basic machine with counterweight 9.4t, mono boom 6.45 m, stick 3.25 m and bucket 2.15 m³ (1,770 kg).

Undercarriage		LC			
Pad width	mm	600	700	800	900
Weight	kg	37,800	38,150	38,500	38,850
Ground pressure	kg/cm ²	0.73	0.64	0.56	0.50

Undercarriage		WLC			
Pad width	mm	600	700	800	900
Weight	kg	38,350	38,700	39,050	39,450
Ground pressure	kg/cm ²	0.70	0.60	0.53	0.48

Buckets Machine stability per ISO 10567* (75% of tipping capacity)

Cutting width mm	Capacity ISO 7451 m ³	Weight ³⁾ kg	Weight ⁴⁾ kg	LC undercarriage (with track pads 600 mm)								WLC undercarriage (with track pads 600 mm)								
				Stick length (m)				Stick length (m)				Stick length (m)				Stick length (m)				
				without quick coupler		with quick coupler		without quick coupler		with quick coupler		without quick coupler		with quick coupler		without quick coupler		with quick coupler		
2.60	2.90	3.25	3.95	2.60	2.90	3.25	3.95	2.60	2.90	3.25	3.95	2.60	2.90	3.25	3.95	2.60	2.90	3.25	3.95	
with counterweight 8.4 t																				
STD ¹⁾	1,050	1.00	1,310	1,270	▲	▲	▲	▲	▲	▲	▲	▲	▲	▲	▲	▲	▲	▲	▲	▲
	1,200	1.25	1,420	1,380	▲	▲	▲	▲	▲	▲	▲	▲	▲	▲	▲	▲	▲	▲	▲	▲
	1,350	1.50	1,530	1,490	▲	▲	▲	▲	▲	▲	▲	▲	▲	▲	▲	▲	▲	▲	▲	▲
	1,500	1.75	1,630	1,590	▲	▲	▲	▲	▲	▲	▲	▲	▲	▲	▲	▲	▲	▲	▲	▲
	1,600	1.90	1,700	1,660	▲	▲	▲	■	▲	▲	▲	▲	▲	▲	▲	▲	▲	▲	▲	■
	1,650	2.00	1,730	1,690	▲	▲	■	▲	▲	▲	▲	▲	▲	▲	▲	▲	▲	▲	▲	■
	1,600	2.15	1,770	1,730	▲	■	▲	▲	▲	▲	■	▲	▲	▲	■	▲	▲	▲	■	▲
	1,650	2.25	1,810	1,770	▲	■	▲	■	▲	■	■	▲	▲	▲	■	▲	▲	■	■	■
	1,800	2.50	1,900	1,860	▲	▲	▲	▲	▲	▲	▲	▲	▲	▲	■	■	▲	▲	■	▲
	1,800	2.75	1,970	1,930	■	■	▲	△	-	■	▲	▲	▲	-	▲	■	■	▲	▲	△
1,850	3.00	2,020	1,980	△	△	△	-	-	△	△	-	-	-	■	△	△	-	■	△	-
HD ²⁾	1,050	1.00	1,410	1,370	▲	▲	▲	▲	▲	▲	▲	▲	▲	▲	▲	▲	▲	▲	▲	▲
	1,200	1.25	1,510	1,470	▲	▲	▲	▲	▲	▲	▲	▲	▲	▲	▲	▲	▲	▲	▲	▲
	1,350	1.50	1,620	1,580	▲	▲	▲	▲	▲	▲	▲	▲	▲	▲	▲	▲	▲	▲	▲	▲
	1,500	1.75	1,730	1,690	▲	▲	▲	■	▲	▲	▲	▲	▲	▲	▲	▲	▲	▲	▲	▲
	1,600	1.90	1,800	1,760	▲	▲	▲	▲	▲	▲	▲	■	▲	▲	▲	▲	▲	▲	▲	■
	1,650	2.00	1,830	1,790	▲	▲	■	▲	▲	▲	▲	▲	▲	▲	▲	▲	▲	▲	▲	■
	1,600	2.15	1,870	1,830	▲	■	▲	■	▲	▲	■	▲	▲	▲	■	▲	▲	▲	■	■
	1,650	2.25	1,910	1,870	■	■	▲	▲	▲	■	■	▲	▲	▲	■	■	▲	▲	▲	■
	1,800	2.50	2,000	1,960	▲	■	▲	▲	▲	▲	■	■	▲	▲	▲	▲	■	▲	▲	▲
	1,800	2.75	2,080	2,040	■	▲	▲	△	-	■	▲	▲	▲	-	▲	■	■	▲	▲	△
1,850	3.00	2,130	2,090	△	△	△	-	-	△	△	-	-	-	■	△	△	-	■	△	-
with counterweight 9.4 t																				
STD ¹⁾	1,050	1.00	1,310	1,270	▲	▲	▲	▲	▲	▲	▲	▲	▲	▲	▲	▲	▲	▲	▲	▲
	1,200	1.25	1,420	1,380	▲	▲	▲	▲	▲	▲	▲	▲	▲	▲	▲	▲	▲	▲	▲	▲
	1,350	1.50	1,530	1,490	▲	▲	▲	▲	▲	▲	▲	▲	▲	▲	▲	▲	▲	▲	▲	▲
	1,500	1.75	1,630	1,590	▲	▲	▲	▲	▲	▲	▲	▲	▲	▲	▲	▲	▲	▲	▲	▲
	1,600	1.90	1,700	1,660	▲	▲	▲	▲	▲	▲	▲	▲	■	▲	▲	▲	▲	▲	▲	▲
	1,650	2.00	1,730	1,690	▲	▲	▲	■	▲	▲	▲	▲	▲	▲	▲	▲	▲	▲	▲	▲
	1,600	2.15	1,770	1,730	▲	▲	▲	▲	▲	▲	■	▲	▲	▲	▲	▲	▲	▲	▲	■
	1,650	2.25	1,810	1,770	▲	▲	■	▲	▲	▲	■	■	▲	▲	▲	▲	▲	▲	▲	▲
	1,800	2.50	1,900	1,860	■	■	▲	▲	▲	■	■	▲	▲	▲	■	■	▲	▲	■	■
	1,800	2.75	1,970	1,930	▲	▲	▲	▲	▲	▲	■	■	▲	▲	▲	▲	▲	▲	■	▲
1,850	3.00	2,020	1,980	■	■	△	△	△	■	△	△	-	-	▲	▲	■	△	▲	△	△
HD ²⁾	1,050	1.00	1,410	1,370	▲	▲	▲	▲	▲	▲	▲	▲	▲	▲	▲	▲	▲	▲	▲	▲
	1,200	1.25	1,510	1,470	▲	▲	▲	▲	▲	▲	▲	▲	▲	▲	▲	▲	▲	▲	▲	▲
	1,350	1.50	1,620	1,580	▲	▲	▲	▲	▲	▲	▲	▲	▲	▲	▲	▲	▲	▲	▲	▲
	1,500	1.75	1,730	1,690	▲	▲	▲	▲	▲	▲	▲	▲	▲	▲	▲	▲	▲	▲	▲	▲
	1,600	1.90	1,800	1,760	▲	▲	▲	▲	▲	▲	▲	▲	■	▲	▲	▲	▲	▲	▲	▲
	1,650	2.00	1,830	1,790	▲	▲	▲	■	▲	▲	▲	▲	▲	▲	▲	▲	▲	▲	▲	■
	1,600	2.15	1,870	1,830	▲	▲	■	▲	▲	▲	■	■	▲	▲	▲	▲	▲	▲	▲	■
	1,650	2.25	1,910	1,870	▲	▲	■	▲	▲	■	■	■	▲	▲	▲	▲	▲	▲	▲	■
	1,800	2.50	2,000	1,960	■	■	▲	▲	▲	■	■	■	▲	▲	▲	▲	▲	▲	▲	■
	1,800	2.75	2,080	2,040	▲	■	▲	▲	▲	▲	■	■	▲	▲	▲	▲	▲	▲	■	▲
1,850	3.00	2,130	2,090	■	△	△	-	-	■	△	△	-	-	▲	■	△	△	▲	△	△

* Indicated loads are based on ISO 10567, at maximum reach, and may be swung 360° on firm and even ground

¹⁾ Standard bucket with teeth Z 50

²⁾ HD bucket with teeth Z 50

³⁾ Bucket for direct mounting

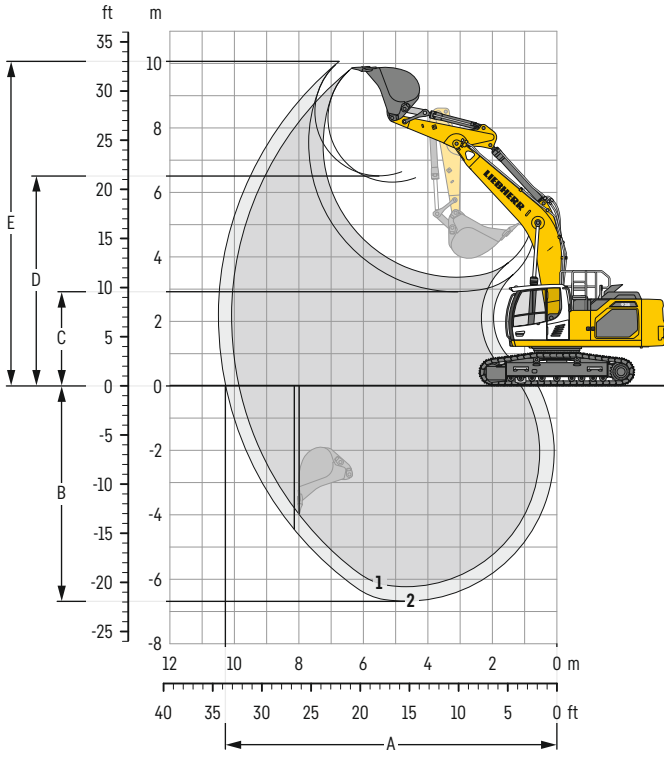
⁴⁾ Bucket for mounting to quick coupler SWA 66 (430 kg)

Other buckets available upon request

Max. material weight ▲ = ≤ 2.0t/m³, ■ = ≤ 1.8t/m³, ▲ = ≤ 1.65t/m³, ■ = ≤ 1.5t/m³, △ = ≤ 1.2t/m³, - = not authorised

Backhoe bucket

with mono boom SME 6.15 m



Digging envelope

without quick coupler		1	2
Stick length	m	2.15	2.60
		SME	SME
A Max. reach at ground level	m	9.86	10.28
B Max. digging depth	m	6.23	6.68
C Min. dumping height	m	3.37	2.92
D Max. dumping height	m	6.32	6.61
E Max. cutting height	m	9.86	10.06

Forces

without quick coupler		1	2
Stick digging force (ISO 6015)	kN	238	212
Bucket digging force (ISO 6015)	kN	264	264
Stick digging force (SAE J1179)	kN	226	202
Bucket digging force (SAE J1179)	kN	233	233

Operating weight and ground pressure

The operating weight includes the basic machine with counterweight 8.4 t, mono boom SME 6.15 m, stick SME 2.15 m and HD bucket 2.50 m³ (2,000 kg).

Undercarriage		LC			
Pad width	mm	600	700	800	900
Weight	kg	36,900	37,250	37,600	37,950
Ground pressure	kg/cm ²	0.72	0.62	0.55	0.49

Undercarriage		WLC			
Pad width	mm	600	700	800	900
Weight	kg	37,450	37,800	38,150	38,550
Ground pressure	kg/cm ²	0.68	0.59	0.52	0.47

The operating weight includes the basic machine with counterweight 9.4 t, mono boom SME 6.15 m, stick SME 2.15 m and HD bucket 2.50 m³ (2,000 kg).

Undercarriage		LC			
Pad width	mm	600	700	800	900
Weight	kg	37,900	38,250	38,600	38,950
Ground pressure	kg/cm ²	0.74	0.64	0.56	0.50

Undercarriage		WLC			
Pad width	mm	600	700	800	900
Weight	kg	38,450	38,800	39,150	39,550
Ground pressure	kg/cm ²	0.70	0.60	0.53	0.48

Buckets Machine stability per ISO 10567* (75% of tipping capacity)

Cutting width mm	Capacity ISO 7451 m ³	Weight ³⁾ kg	Weight ⁴⁾ kg	LC undercarriage (with track pads 600 mm)				WLC undercarriage (with track pads 600 mm)			
				Stick length (m)				Stick length (m)			
				without quick coupler		with quick coupler		without quick coupler		with quick coupler	
2.15	2.60	2.15	2.60	2.15	2.60	2.15	2.60				
with counterweight 8.4 t											
HD ¹⁾	1,600	2.15	1,870	1,830	▲	▲	▲	▲	▲	▲	▲
	1,650	2.25	1,910	1,870	▲	▲	▲	▲	▲	▲	▲
	1,800	2.50	2,000	1,960	▲	■	▲	▲	▲	▲	■
	1,800	2.75	2,080	2,040	■	■	■	■	▲	▲	▲
	1,850	3.00	2,130	2,090	▲	△	■	△	■	■	■
HDR ²⁾	1,650	2.00	2,490	2,530	▲	▲	▲	▲	▲	▲	▲
	1,650	2.25	2,570	2,610	▲	■	▲	▲	▲	■	▲
	1,650	2.50	2,660	2,700	■	■	▲	■	▲	■	▲
with counterweight 9.4 t											
HD ¹⁾	1,600	2.15	1,870	1,830	▲	▲	▲	▲	▲	▲	▲
	1,650	2.25	1,910	1,870	▲	▲	▲	▲	▲	▲	▲
	1,800	2.50	2,000	1,960	▲	▲	▲	■	▲	▲	▲
	1,800	2.75	2,080	2,040	▲	■	▲	▲	▲	■	■
	1,850	3.00	2,130	2,090	■	▲	■	■	▲	■	▲
HDR ²⁾	1,650	2.00	2,490	2,530	▲	▲	▲	▲	▲	▲	▲
	1,650	2.25	2,570	2,610	▲	▲	▲	■	▲	▲	■
	1,650	2.50	2,660	2,700	▲	■	▲	▲	▲	▲	■

* Indicated loads are based on ISO 10567, at maximum reach, and may be swung 360° on firm and even ground

¹⁾ HD bucket with teeth Z 50

²⁾ HDR bucket with teeth Z 70

³⁾ Bucket for direct mounting

⁴⁾ Bucket for mounting to quick coupler SWA 66 (430 kg)

Other buckets available upon request

Max. material weight ▲ = ≤ 2.0t/m³, ■ = ≤ 1.8t/m³, ▲ = ≤ 1.65t/m³, ■ = ≤ 1.5t/m³, △ = ≤ 1.2t/m³

Lift capacities

with mono boom 6.45 m, counterweight 8.4 t and track pads 600 mm

Stick 2.60 m

Under-carriage	m	3.0m		4.5m		6.0m		7.5m		9.0m		m
LC	7.5			10.0*	10.0*			8.5	9.9*	6.9		
	6.0			10.5	10.6*			6.8	9.6*	7.9		
	4.5			15.2*	15.2*			7.4	9.7*	8.5		
	3.0			13.9	18.4*	9.4	13.3*	6.9	10.3	8.8		
	1.5			13.2	16.5*	8.9	13.9	6.6	10.0	8.8		
	0			13.0	19.6*	8.7	13.6	6.5	9.8	8.6		
	-1.5	15.0*	15.0*	13.0	18.4*	8.6	13.5	6.4	9.8	8.0		
	-3.0	20.1*	20.1*	13.3	16.2*	8.7	12.6*			7.1		
	-4.5			12.2*	12.2*					5.7		
	-6.0											
WLC	7.5			10.0*	10.0*			9.0	9.9*	6.9		
	6.0			10.6*	10.6*			7.2	9.6*	7.9		
	4.5			15.2*	15.2*			7.6	10.2*	8.5		
	3.0			15.0	18.4*	10.1	13.3*	7.3	10.8*	8.8		
	1.5			14.3	16.5*	9.6	14.3*	7.1	11.1	8.8		
	0			14.1	19.6*	9.3	14.7*	6.9	10.9	8.6		
	-1.5	15.0*	15.0*	14.1	18.4*	9.3	14.2*	6.9	10.9	8.0		
	-3.0	20.1*	20.1*	14.4	16.2*	9.4	12.6*			7.1		
	-4.5			12.2*	12.2*					5.7		
	-6.0											

Stick 2.90 m

Under-carriage	m	3.0m		4.5m		6.0m		7.5m		9.0m		m
LC	7.5									8.0	9.3*	7.2
	6.0									6.4	9.1*	8.2
	4.5									5.6	8.3	8.7
	3.0									5.2	7.8	9.0
	1.5									5.1	7.6	9.0
	0									5.2	7.8	8.8
	-1.5	15.0*	15.0*							5.6	8.4	8.3
	-3.0	21.6*	21.6*							6.5	9.9	7.5
	-4.5	16.5*	16.5*							8.7	9.5*	6.1
	-6.0											
WLC	7.5									8.5	9.3*	7.2
	6.0									6.9	9.1*	8.2
	4.5									6.0	9.2*	8.7
	3.0									5.6	8.6	9.0
	1.5									5.4	8.4	9.0
	0									5.6	8.6	8.8
	-1.5	15.0*	15.0*							6.0	9.4	8.3
	-3.0	21.6*	21.6*							7.0	9.9*	7.5
	-4.5	16.5*	16.5*							9.4	9.5*	6.1
	-6.0											

Stick 3.25 m

Under-carriage	m	3.0m		4.5m		6.0m		7.5m		9.0m		m
LC	7.5							7.6	8.8*	7.3	8.1*	7.6
	6.0							7.5	8.9*	6.0	8.0*	8.5
	4.5							7.2	9.5*	5.4	7.9	9.1
	3.0							6.9	10.2*	5.2	7.8	9.3
	1.5							6.6	9.9	5.1	7.6	9.4
	0							6.3	9.7	5.0	7.5	9.1
	-1.5	14.5*	14.5*					6.2	9.6	5.2	7.9	8.6
	-3.0	22.8*	22.8*					6.0	9.1	6.0	9.1	7.8
	-4.5	18.3*	18.3*					7.8	9.4*	6.6		
	-6.0											
WLC	7.5							8.0	8.8*	7.8	8.1*	7.6
	6.0							7.9	8.9*	6.4	8.0*	8.5
	4.5							7.7	9.5*	5.7	8.6*	9.1
	3.0							7.3	10.2*	5.6	8.6	9.3
	1.5							7.0	11.0*	5.4	8.4	9.4
	0							6.8	10.8	5.3	8.3	9.1
	-1.5	14.5*	14.5*					6.7	10.7	5.6	8.8	8.6
	-3.0	22.8*	22.8*					6.8	10.2*	6.4	9.6*	7.8
	-4.5	18.3*	18.3*					8.3	9.4*	6.6		
	-6.0											

Stick 3.95 m

Under-carriage	m	3.0m		4.5m		6.0m		7.5m		9.0m		m
LC	7.5									6.4*	6.4*	8.3
	6.0									5.4	6.3*	9.1
	4.5									4.8	6.4*	9.6
	3.0									5.2	7.7	9.9
	1.5									5.0	7.5	9.9
	0									4.8	7.3	9.7
	-1.5	14.5*	14.5*							4.8	7.3	9.2
	-3.0	20.4*	20.4*							5.2	8.0	8.4
	-4.5	21.4*	21.4*							6.4	9.3*	7.3
	-6.0									9.0*	9.0*	5.5
WLC	7.5									6.4*	6.4*	8.3
	6.0									5.8	6.3*	9.1
	4.5									5.1	6.4*	9.6
	3.0									5.6	8.4*	9.9
	1.5									5.4	8.4	9.9
	0									5.2	8.2	9.7
	-1.5	14.5*	14.5*							5.1	8.1	9.2
	-3.0	20.4*	20.4*							5.6	8.9	8.4
	-4.5	21.4*	21.4*							6.9	9.3*	7.3
	-6.0									9.0*	9.0*	5.5

Height Can be slewed through 360° In longitudinal position of undercarriage Max. reach * Limited by hydr. capacity

The load values are quoted in tons (t) at stick end (without bucket), and may be swung 360° on firm and even ground. Adjacent values are valid for the undercarriage when in the longitudinal position. Capacities are valid for 600 mm wide track pads. Indicated loads are based on ISO 10567 standard and do not exceed 75% of tipping or 87% of hydraulic capacity (indicated via *). Without bucket cylinder, link and lever the lift capacities will increase by 495 kg. Lifting capacity of the excavator is limited by machine stability and hydraulic capacity.

According to European Standard, EN 474-5: In the European Union excavators have to be equipped with an overload warning device, a load diagram and automatic safety check valves on hoist cylinders and stick cylinder(s), when they are used for lifting operations which require the use of lifting accessories.

Determine maximum load lift from load lift chart displayed in the operator's cab or from load lift chart detailed in the operator's manual supplied with the machine.

Lift capacities

with mono boom 6.45 m, counterweight 9.4 t and track pads 600 mm

Stick 2.60 m

Under-carriage	m	3.0m		4.5m		6.0m		7.5m		9.0m		m	
LC	7.5			10.0*	10.0*			9.1	9.9*	6.9			
	6.0			10.6*	10.6*			7.3	9.6*	7.9			
	4.5			15.2*	15.2*			6.4	9.3	8.5			
	3.0			15.0	18.4*	10.1	13.3*	7.4	10.8*	8.8			
	1.5			14.2	16.5*	9.6	14.3*	7.2	10.7	8.8			
	0			14.1	19.6*	9.4	14.5	7.0	10.5	8.6			
	-1.5	15.0*	15.0*	14.1	18.4*	9.3	14.2*	7.0	10.4	8.0			
	-3.0	20.1*	20.1*	14.3	16.2*	9.5	12.6*			7.1			
	-4.5			12.2*	12.2*					9.4*	9.4*	5.7	
	-6.0												
WLC	7.5			10.0*	10.0*			8.4	9.7*	6.9			
	6.0			10.6*	10.6*			8.2	10.2*	7.9			
	4.5			11.4	11.8*			6.8	9.6*	8.5			
	3.0			16.1	18.4*	10.8	13.3*	7.9	10.8*	8.8			
	1.5			15.4	16.5*	10.3	14.3*	7.6	11.4*	8.8			
	0			15.2	19.6*	10.1	14.7*	7.5	11.6*	8.6			
	-1.5	15.0*	15.0*	15.2	18.4*	10.0	14.2*	7.4	11.1*	8.0			
	-3.0	20.1*	20.1*	15.5	16.2*	10.1	12.6*			7.1			
	-4.5			12.2*	12.2*					9.4*	9.4*	5.7	
	-6.0												

Stick 2.90 m

Under-carriage	m	3.0m		4.5m		6.0m		7.5m		9.0m		m
LC	7.5									8.5	9.3*	7.2
	6.0									6.9	9.1*	8.2
	4.5			14.5*	14.5*	10.8	11.4*	7.7	9.9*			8.7
	3.0			15.2	17.7*	10.2	12.9*	7.4	10.6*	5.7	8.3	9.0
	1.5			14.3	19.6*	9.7	14.1*	7.1	10.6	5.6	8.2	9.0
	0			14.0	19.7*	9.4	14.5	7.0	10.4			8.8
	-1.5	15.0*	15.0*	14.0	18.7*	9.3	14.3*	6.9	10.4			8.3
	-3.0	21.6*	21.6*	14.2	16.7*	9.3	13.0*					7.5
	-4.5	16.5*	16.5*	13.1*	13.1*	9.7	9.8*					6.1
	-6.0											
WLC	7.5									9.0	9.3*	7.2
	6.0									7.4	9.1*	8.2
	4.5			14.5*	14.5*	11.4*	11.4*	8.2	9.9*			8.7
	3.0			16.3	17.7*	10.9	12.9*	7.9	10.6*	6.1	9.2	9.0
	1.5			15.4	19.6*	10.3	14.1*	7.6	11.2*	5.9	9.0	9.0
	0			15.1	19.7*	10.0	14.6*	7.4	11.5*			8.8
	-1.5	15.0*	15.0*	15.1	18.7*	9.9	14.3*	7.4	11.2*			8.3
	-3.0	21.6*	21.6*	15.3	16.7*	10.0	13.0*					7.5
	-4.5	16.5*	16.5*	13.1*	13.1*	9.8*	9.8*					6.1
	-6.0											

Stick 3.25 m

Under-carriage	m	3.0m		4.5m		6.0m		7.5m		9.0m		m
LC	7.5							8.1	8.8*	7.9	8.1*	7.6
	6.0							8.0	8.9*	6.5	8.0*	8.5
	4.5			13.6*	13.6*	10.8	10.9*	7.7	9.5*	5.8	8.5	9.1
	3.0			15.4	16.9*	10.2	12.4*	7.4	10.2*	5.7	8.3	9.3
	1.5			14.3	19.1*	9.6	13.7*	7.1	10.6	5.5	8.1	9.4
	0			13.9	19.7*	9.3	14.4*	6.9	10.4	5.4	8.0	9.1
	-1.5	14.5*	14.5*	13.8	19.0*	9.1	14.3	6.8	10.3			8.6
	-3.0	22.8*	22.8*	14.0	17.3*	9.2	13.2*	6.8	10.2*			7.8
	-4.5	18.3*	18.3*	14.1*	14.1*	9.5	10.7*					6.6
	-6.0											
WLC	7.5							8.6	8.8*	8.1*	8.1*	7.6
	6.0							8.5	8.9*	6.9	8.0*	8.5
	4.5			13.6*	13.6*	10.9*	10.9*	8.2	9.5*	6.2	8.6*	9.1
	3.0			16.5	16.9*	10.9	12.4*	7.9	10.2*	6.0	9.0*	9.3
	1.5			15.5	19.1*	10.3	13.7*	7.6	11.0*	5.9	9.0	9.4
	0			15.0	19.7*	10.0	14.4*	7.4	11.4*	5.8	8.9	9.1
	-1.5	14.5*	14.5*	14.9	19.0*	9.8	14.3*	7.3	11.2*			8.6
	-3.0	22.8*	22.8*	15.1	17.3*	9.9	13.2*	7.3	10.2*			7.8
	-4.5	18.3*	18.3*	14.1*	14.1*	10.1	10.7*					6.6
	-6.0											

Stick 3.95 m

Under-carriage	m	3.0m		4.5m		6.0m		7.5m		9.0m		m
LC	7.5									7.7*	7.7*	8.3
	6.0									8.0*	8.0*	9.1
	4.5					9.8*	9.8*	7.8	8.7*	5.8	8.0*	9.6
	3.0			14.0*	14.0*	15.1*	15.1*	10.3	11.4*	7.4	9.5*	9.9
	1.5			7.0*	7.0*	14.5	17.9*	9.7	13.0*	7.1	10.4*	9.9
	0			9.9*	9.9*	13.8	19.3*	9.2	13.9*	6.8	10.3	9.7
	-1.5	14.5*	14.5*	13.6	19.2*	9.0	14.1	6.6	10.1	5.3	7.9	9.2
	-3.0	20.4*	20.4*	13.6	18.1*	8.9	13.6*	6.6	10.1	5.2	7.8	8.4
	-4.5	21.4*	21.4*	13.9	15.7*	9.1	11.9*					7.3
	-6.0			11.2*	11.2*							5.5
WLC	7.5									7.7*	7.7*	8.3
	6.0									8.0*	8.0*	9.1
	4.5					9.8*	9.8*	8.3	8.7*	6.2	8.0*	9.6
	3.0			14.0*	14.0*	15.1*	15.1*	11.0	11.4*	7.9	9.5*	9.9
	1.5			7.0*	7.0*	15.7	17.9*	10.4	13.0*	7.6	10.4*	9.9
	0			9.9*	9.9*	15.0	19.3*	9.9	13.9*	7.3	11.0*	9.7
	-1.5	14.5*	14.5*	14.7	19.2*	9.7	14.2*	7.1	11.2*	5.6	8.7	9.2
	-3.0	20.4*	20.4*	14.7	18.1*	9.6	13.6*	7.1	10.6*			8.4
	-4.5	21.4*	21.4*	15.0	15.7*	9.8	11.9*					7.3
	-6.0			11.2*	11.2*							5.5

Height Can be slewed through 360° In longitudinal position of undercarriage Max. reach * Limited by hydr. capacity

The load values are quoted in tons (t) at stick end (without bucket), and may be swung 360° on firm and even ground. Adjacent values are valid for the undercarriage when in the longitudinal position. Capacities are valid for 600 mm wide track pads. Indicated loads are based on ISO 10567 standard and do not exceed 75% of tipping or 87% of hydraulic capacity (indicated via *). Without bucket cylinder, link and lever the lift capacities will increase by 495 kg. Lifting capacity of the excavator is limited by machine stability and hydraulic capacity.

According to European Standard, EN 474-5: In the European Union excavators have to be equipped with an overload warning device, a load diagram and automatic safety check valves on hoist cylinders and stick cylinder(s), when they are used for lifting operations which require the use of lifting accessories.

Determine maximum load lift from load lift chart displayed in the operator's cab or from load lift chart detailed in the operator's manual supplied with the machine.

Lift capacities

with mono boom SME 6.15 m, counterweight 8.4 t and track pads 600 mm

Stick SME 2.15 m

Under-carriage m	3.0m		4.5m		6.0m		7.5m		9.0m		m	
7.5										10.6	11.3*	6.0
6.0										7.9	10.8*	7.1
4.5			15.1	16.0*	9.9	12.4*	7.1	10.5		6.7	10.0	7.7
3.0			13.8	18.9*	9.3	13.7*	6.8	10.2		6.2	9.2	8.0
1.5			13.2	19.1*	8.9	13.9	6.6	10.0		6.0	9.0	8.1
0			13.0	19.3*	8.7	13.6	6.5	9.8		6.2	9.3	7.8
-1.5	19.0*	19.0*	13.1	17.7*	8.7	13.6				6.8	10.4	7.2
-3.0	17.6*	17.6*	13.4	14.8*	8.9	11.3*				8.5	10.7*	6.2
-4.5												
7.5					11.0	11.4*				11.3*	11.3*	6.0
6.0					8.4	10.8*				8.4	10.8*	7.1
4.5			16.0*	16.0*	10.6	12.4*	7.5	10.8*		7.2	10.6*	7.7
3.0			14.9	18.9*	10.0	13.7*	7.3	11.2*		6.6	10.2	8.0
1.5			14.2	19.1*	9.6	14.5*	7.1	11.1		6.4	10.0	8.1
0			14.1	19.3*	9.3	14.6*	7.0	11.0		6.6	10.4	7.8
-1.5	19.0*	19.0*	14.2	17.7*	9.3	13.7*				7.3	11.0*	7.2
-3.0	17.6*	17.6*	14.6	14.8*	9.6	11.3*				9.1	10.7*	6.2
-4.5												

Stick SME 2.60 m

Under-carriage m	3.0m		4.5m		6.0m		7.5m		9.0m		m	
7.5					10.3*	10.3*				9.2	10.3*	6.5
6.0					10.5	10.7*	7.3	10.0*		7.2	10.0*	7.5
4.5			14.9*	14.9*	10.0	11.8*	7.1	10.3*		6.2	9.2	8.2
3.0			14.1	18.0*	9.4	13.2*	6.8	10.2		5.7	8.5	8.5
1.5			13.3	19.7*	8.9	13.9	6.6	9.9		5.5	8.3	8.5
0			13.0	19.7*	8.6	13.6	6.4	9.8		5.7	8.5	8.2
-1.5	18.0*	18.0*	13.0	18.4*	8.6	13.5	6.4	9.7		6.2	9.4	7.7
-3.0	20.2*	20.2*	13.2	15.9*	8.7	12.2*				7.5	10.3*	6.8
-4.5			11.1*	11.1*						9.3*	9.3*	5.2
7.5					10.3*	10.3*				9.8	10.3*	6.5
6.0					10.7*	10.7*	7.7	10.0*		7.7	10.0*	7.5
4.5			14.9*	14.9*	10.7	11.8*	7.6	10.3*		6.6	9.9*	8.2
3.0			15.2	18.0*	10.1	13.2*	7.3	10.9*		6.1	9.4	8.5
1.5			14.4	19.7*	9.6	14.2*	7.0	11.1		5.9	9.2	8.5
0			14.1	19.7*	9.3	14.6*	6.9	10.9		6.1	9.5	8.2
-1.5	18.0*	18.0*	14.1	18.4*	9.2	14.0*	6.9	10.8*		6.7	10.4*	7.7
-3.0	20.2*	20.2*	14.3	15.9*	9.4	12.2*				8.0	10.3*	6.8
-4.5			11.1*	11.1*						9.3*	9.3*	5.2

Height Can be slewed through 360° In longitudinal position of undercarriage Max. reach * Limited by hydr. capacity

The load values are quoted in tons (t) at stick end (without bucket), and may be swung 360° on firm and even ground. Adjacent values are valid for the undercarriage when in the longitudinal position. Capacities are valid for 600 mm wide track pads. Indicated loads are based on ISO 10567 standard and do not exceed 75% of tipping or 87% of hydraulic capacity (indicated via *). Without bucket cylinder, link and lever the lift capacities will increase by 590 kg. Lifting capacity of the excavator is limited by machine stability and hydraulic capacity.

According to European Standard, EN 474-5: In the European Union excavators have to be equipped with an overload warning device, a load diagram and automatic safety check valves on hoist cylinders and stick cylinder(s), when they are used for lifting operations which require the use of lifting accessories.

Determine maximum load lift from load lift chart displayed in the operator's cab or from load lift chart detailed in the operator's manual supplied with the machine.

Lift capacities

with mono boom SME 6.15 m, counterweight 9.4 t and track pads 600 mm

Stick SME 2.15 m

Under-carriage m	3.0m		4.5m		6.0m		7.5m		9.0m		m	
7.5										11.3*	11.3*	6.0
6.0										8.5	10.8*	7.1
4.5			16.0*	16.0*	10.6	12.4*	7.6	10.8*		7.2	10.6	7.7
3.0			14.9	18.9*	10.0	13.7*	7.4	10.9		6.6	9.8	8.0
LC 1.5			14.2	19.1*	9.6	14.5*	7.1	10.6		6.5	9.6	8.1
0			14.1	19.3*	9.4	14.5	7.0	10.5		6.7	9.9	7.8
-1.5	19.0*	19.0*	14.2	17.7*	9.4	13.7*				7.4	11.0*	7.2
-3.0	17.6*	17.6*	14.5	14.8*	9.6	11.3*				9.2	10.7*	6.2
-4.5												
7.5					11.4*	11.4*				11.3*	11.3*	6.0
6.0										9.0	10.8*	7.1
4.5			16.0*	16.0*	11.3	12.4*	8.1	10.8*		7.7	10.6*	7.7
3.0			16.0	18.9*	10.7	13.7*	7.8	11.2*		7.1	10.7*	8.0
LC 1.5			15.4	19.1*	10.3	14.5*	7.6	11.6*		6.9	10.6	8.1
0			15.2	19.3*	10.1	14.6*	7.5	11.5*		7.1	10.9*	7.8
-1.5	19.0*	19.0*	15.3	17.7*	10.1	13.7*				7.9	11.0*	7.2
-3.0	17.6*	17.6*	14.8*	14.8*	10.3	11.3*				9.8	10.7*	6.2
-4.5												

Stick SME 2.60 m

Under-carriage m	3.0m		4.5m		6.0m		7.5m		9.0m		m	
7.5					10.3*	10.3*				9.9	10.3*	6.5
6.0					10.7*	10.7*	7.8	10.0*		7.7	10.0*	7.5
4.5			14.9*	14.9*	10.7	11.8*	7.6	10.3*		6.7	9.8	8.2
3.0			15.2	18.0*	10.1	13.2*	7.4	10.9*		6.2	9.1	8.5
LC 1.5			14.3	19.7*	9.6	14.2*	7.1	10.6		6.0	8.9	8.5
0			14.0	19.7*	9.4	14.5	6.9	10.4		6.1	9.1	8.2
-1.5	18.0*	18.0*	14.1	18.4*	9.3	14.0*	6.9	10.4		6.7	10.1	7.7
-3.0	20.2*	20.2*	14.3	15.9*	9.4	12.2*				8.1	10.3*	6.8
-4.5			11.1*	11.1*						9.3*	9.3*	5.2
7.5					10.3*	10.3*				10.3*	10.3*	6.5
6.0					10.7*	10.7*	8.3	10.0*		8.2	10.0*	7.5
4.5			14.9*	14.9*	11.4	11.8*	8.1	10.3*		7.1	9.9*	8.2
3.0			16.3	18.0*	10.8	13.2*	7.8	10.9*		6.6	10.0*	8.5
LC 1.5			15.5	19.7*	10.3	14.2*	7.6	11.4*		6.4	9.8	8.5
0			15.2	19.7*	10.0	14.6*	7.4	11.5*		6.6	10.1	8.2
-1.5	18.0*	18.0*	15.2	18.4*	10.0	14.0*	7.4	10.8*		7.2	10.4*	7.7
-3.0	20.2*	20.2*	15.4	15.9*	10.1	12.2*				8.7	10.3*	6.8
-4.5			11.1*	11.1*						9.3*	9.3*	5.2

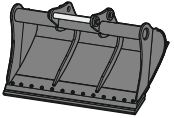
Height Can be slewed through 360° In longitudinal position of undercarriage Max. reach * Limited by hydr. capacity

The load values are quoted in tons (t) at stick end (without bucket), and may be swung 360° on firm and even ground. Adjacent values are valid for the undercarriage when in the longitudinal position. Capacities are valid for 600 mm wide track pads. Indicated loads are based on ISO 10567 standard and do not exceed 75% of tipping or 87% of hydraulic capacity (indicated via *). Without bucket cylinder, link and lever the lift capacities will increase by 590 kg. Lifting capacity of the excavator is limited by machine stability and hydraulic capacity.

According to European Standard, EN 474-5: In the European Union excavators have to be equipped with an overload warning device, a load diagram and automatic safety check valves on hoist cylinders and stick cylinder(s), when they are used for lifting operations which require the use of lifting accessories.

Determine maximum load lift from load lift chart displayed in the operator's cab or from load lift chart detailed in the operator's manual supplied with the machine.

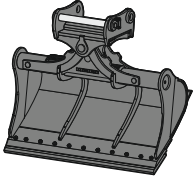
Attachments



Rigid ditch cleaning bucket

GRL 05, for mounting to quick coupler SWA 66

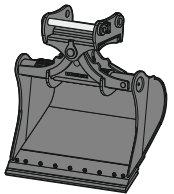
Cutting width	mm	2,000	2,200	2,400	2,800	2,800
Capacity	m ³	1.45	1.65	1.50	2.60	2.90
Weight	kg	994	1,048	930	1,522	1,561



Tiltable ditch cleaning bucket

GRL 100, 2 x 50° tiltable, for mounting to quick coupler SWA 66

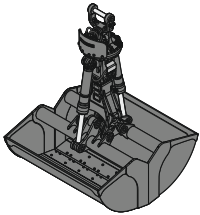
Cutting width	mm	2,000	2,000	2,000	2,200	2,400	2,400
Capacity	m ³	0.70	1.20	1.45	1.65	0.85	1.45
Weight	kg	1,375	1,520	1,595	1,660	1,475	1,610



Tilt bucket

SL 100, 2 x 50° tiltable, for mounting to quick coupler SWA 66

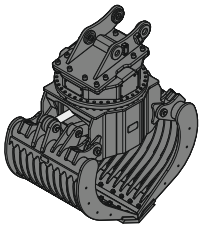
Cutting width	mm	1,600	1,600	1,700	1,800	1,800	1,800	1,800
Capacity	m ³	1.45	1.75	1.85	1.60	2.00	1.60	2.00
Weight	kg	1,520	1,635	1,695	1,620	1,690	1,749	1,757
HD version						X		X



Clamshell grab

GMZ 80, clamshell buckets, for mounting to quick coupler SWA 66

Cutting width	mm	1,200	1,400	1,650	2,000
Capacity	m ³	1.40	1.70	2.00	2.50
Weight	kg	1,452	1,558	1,693	1,877



Sorting grab

ribbed

perforated

SG 40, for mounting to quick coupler SWA 66

Cutting width	mm	1,100	1,300	1,100	1,300
Capacity	m ³	1.10	1.40	1.30	1.60
Weight	kg	2,320	2,895	2,230	2,800

Serial equipment



Undercarriage

- Lashing eyes
- Sprocket with dirt ejector
- Track and carrier rollers, sealed and lifetime-lubricated



Uppercarriage

- Access platforms without protruding parts
- Anti-skid surfaces
- Automatic swing brake lock
- DEF tank filling indicator
- DEF tank lockable access hatch
- Engine hood with gas spring opening
- Filters accessible from ground level
- Handrails
- Hydraulic oil level, visible from ground level
- Lockable service doors
- Lockable storage and accessories compartment
- Main switch, accessible from ground level
- Main switch, electric, with timer
- Main switch, manual, lockable
- Positioning swing brake manual
- Protection grid on radiator fan
- Sound insulation
- Swing-out radiators
- Windshield washer fluid tank, accessible from ground level



Hydraulic system

- Dedicated swing circuit
- Filter with integrated fine filters
- Hydraulic pressure measuring ports
- Liebherr Positive Control system with 2 independent circuits
- Magnetic rod
- Pressure accumulator for controlled lowering of equipment with engine turned off



Engine

- Air filter with automatic dust ejector
- Automatic engine idling / speed increase, controlled via joystick sensors
- Common-Rail injection system
- Engine oil dipstick
- Exhaust gas after-treatment system – SCR
- Fixed geometry turbocharger
- Fuel fine filter
- Fuel pre-filter and water separator
- Fuel priming pump
- Intercooler
- Power Pack US EPA Tier 4 Final



Cab

- 2" seat belt with retractor
- 9" multifunction colour touchscreen
- Air conditioning, automatic, tri-zone, controlled via display
- Armrests adjustable in length, height and inclination
- Bottle holder
- Cab air filters housing, accessible from ground level
- Cab door sliding windows
- Cigarette lighter
- Coat hook
- DEF consumption on touchscreen
- DEF level on touchscreen
- Electric socket in cabin (24 V)
- Emergency hammer
- Engine coolant level, visible from the cab
- Engine oil level on touchscreen
- Footrest
- Fuel consumption on touchscreen
- Fuel level on touchscreen
- Hydraulic oil level on touchscreen
- Interior lighting
- Laminated right hand side window
- Laminated roof window
- LiDAT Plus (Liebherr data transfer system)
- Mechanical hour meter, visible from ground level
- Mobile phone storage net
- Movement priority between swing and boom, adjustable via touchscreen
- Movement priority for stick-in, adjustable via touchscreen
- Operating modes
- Power modes
- Rain hood over front window opening
- Rearview mirror
- Rear window emergency exit
- Retractable laminated two-piece windscreen
- Roll-down sun blinds for windscreen and roof window
- Rubber floor mat, fixed on floor and removable
- Shortcut buttons on joystick configurable
- Stepless adjustable engine speed
- Storage nets
- Storage spaces
- Swing braking torque adjustable via touchscreen
- Swing drive gearbox oil level, visible from the cab
- Tilttable console left
- Tinted windows
- Visco-elastic damping
- Windscreen wiper and washer



Equipment

- Anti-drift system boom cylinders
- Anti-drift system stick cylinder
- Boom cylinders regeneration
- Pivot points made of cast steel
- SAE split flanges on high pressure lines
- Stick cylinder regeneration

Equipment standard / option

Undercarriage

Chain guide 1 piece	+
Chain guide 2 pieces	+
Chain guide 3 pieces	●
Chain guide 4 pieces	+
Chain guide full length	+
Cover and base plate for undercarriage centre section	●
Reinforced cover and base plate for undercarriage centre section	+
Steps	●
Steps wide	+
Track pads triple grouser 600 mm	●
Track pads triple grouser 700 / 800 / 900 mm	+
Track pads triple grouser reinforced 600 mm	+
Tracks, sealed and greased	●
Tracks, sealed and greased, reinforced	+
Undercarriage LC	+
Undercarriage WLC	+

Uppercarriage

Batteries high capacity	+
Batteries standard capacity	●
Centralised lubrication system (automatic)	+
Centralised lubrication system (manual)	●
Cold kit -30°C	+
Cold kit -40°C	+
Counterweight heavy 9.4 t	+
Counterweight standard 8.4 t	●
External starting aid (24V)	+
Front right rearview mirror	● ¹⁾
Fuel anti-theft protection	+
Headlight on uppercarriage, front right, LED, 1 piece, protection included	● ¹⁾
Headlight on uppercarriage, front right, LED+, 1 piece, protection included	+ ¹⁾
Headlight on uppercarriage, lateral right, LED+, 1 piece	+ ¹⁾
Headlight on uppercarriage, lateral left, LED+, 1 piece	+ ¹⁾
Headlights on uppercarriage, rear, LED+, 2 pieces	+ ¹⁾
Lockable fuel tank cap	●
Lockable fuel tank cap with padlock	+
Lockable storage box	+
Rearview mirror on counterweight	●
Safe uppercarriage side access platform	+
Tank refilling pump fuel	+
Tool set including storage case	●
Uppercarriage bottom closure sheets	●

Hydraulic system

Filter for hydraulic hammer return flow	+
High pressure circuit flow summation	+
High pressure circuit with Tool Control (20 attachment adjustments on display)	+
Liebherr hydraulic oil	●
Liebherr hydraulic oil, adapted for extreme climate conditions	+
Medium pressure circuit	+

Engine

Air pre-filter with cyclonical dust trap	+
Air pre-filter with oil bath dust trap	+
Pre-heating system for fuel	+

Cab

Acoustic travel alarm deactivatable	+
Auxiliary heater programmable	+
Cold kit -30°C	+
Cold kit -40°C	+
Dark tinted windows	+
Electric socket in cabin (12V)	+
Emergency stop in cab	+
FGPS front guard	+
FGPS front guard tiltable	+
FOPS top guard	+
Handrests elevated for joysticks	+
Headlights on cab, front, LED, 2 pieces	● ¹⁾
Headlights on cab, front, LED+, 2 pieces	+ ¹⁾
Luminosity control (LED+ headlights)	+
Operator seat Comfort	+
Operator seat Standard	●
Overload warning system	+
Radio Comfort	+
Radio pre-installation	●
Rear view monitoring camera	+
Right hand side view monitoring camera	+
Roof window protection grid	+
ROPS safety cab structure (ISO 12117-2)	+
Rotating beacon on cabin, LED, 1 piece	+
Sun visor	+
Windscreen bottom protection grid	+

Equipment

Boom bottom protection	+
Bucket cylinder rod protection	+
Floating boom	+
Headlight on boom, right, LED, 1 piece	● ¹⁾
Headlight on boom, right, LED+, 1 piece	+ ¹⁾
Liebherr bucket range	+
Liebherr tooth system	+
Mono boom 6.45 m	+
Mono boom SME 6.15 m	+
Pipe fracture safety valve for stick cylinder	+
Pipe fracture safety valves for boom cylinders	+
Quick coupler SWA 66 hydraulic	+
Quick coupler SWA 66 mechanical	+
Stick 2.60 m	+
Stick 2.90 m	+
Stick 3.25 m	+
Stick 3.95 m	+
Stick bottom protection	+
Stick SME 2.15 m	+
Stick SME 2.60 m	+

● = Standard, + = Option

¹⁾ Equipment not individually available, but only as predefined packages
Non-exhaustive list, please contact us for further information.

Options and /or special equipment, supplied by vendors other than Liebherr, are only to be installed with the knowledge and approval of Liebherr in order to retain warranty.

The Liebherr Group



Global and independent: more than 70 years of success

Liebherr was founded in 1949 when, with the development of the world's first mobile tower crane, Hans Liebherr laid the foundations for a family business now employing nearly 51,000 people and comprising over 140 companies across every continent.

The parent company is Liebherr-International AG in Bulle, Switzerland, whose associates are exclusively members of the Liebherr family.

Leaders and pioneers

Liebherr is a pioneer and its forward-looking approach has seen it make important contributions to technology history over a wide variety of industries. Employees throughout the world continue to share the courage of the founder, sharing a passion to produce innovative products and a determination to provide world-leading equipment and machinery.

Diversified portfolio

The company is one of the world's biggest construction equipment manufacturers and provides high-quality, user-oriented products and services to sectors including: earthmoving, material handling, deep foundations, mining, mobile and crawler cranes, tower cranes, concrete production and distribution, maritime cranes, aerospace and transportation, gear technology and automation, refrigeration and freezing, components and hotels.

Customised care

Liebherr solutions are characterised by precision, implementation and longevity. The company is committed to technological excellence and to providing customers with solutions that match their needs exactly. That customer focus does not end with delivery of a product but continues through a comprehensive range of back-up and support services.

www.liebherr.com

Liebherr-France SAS

2 avenue Joseph Rey, B.P. 90287 • 68005 Colmar Cedex, France • Phone +33 389 213030
info.lfr@liebherr.com • www.liebherr.com • www.facebook.com/LiebherrConstruction