

Job Report: Demolition Excavator

# R 950 Demolition

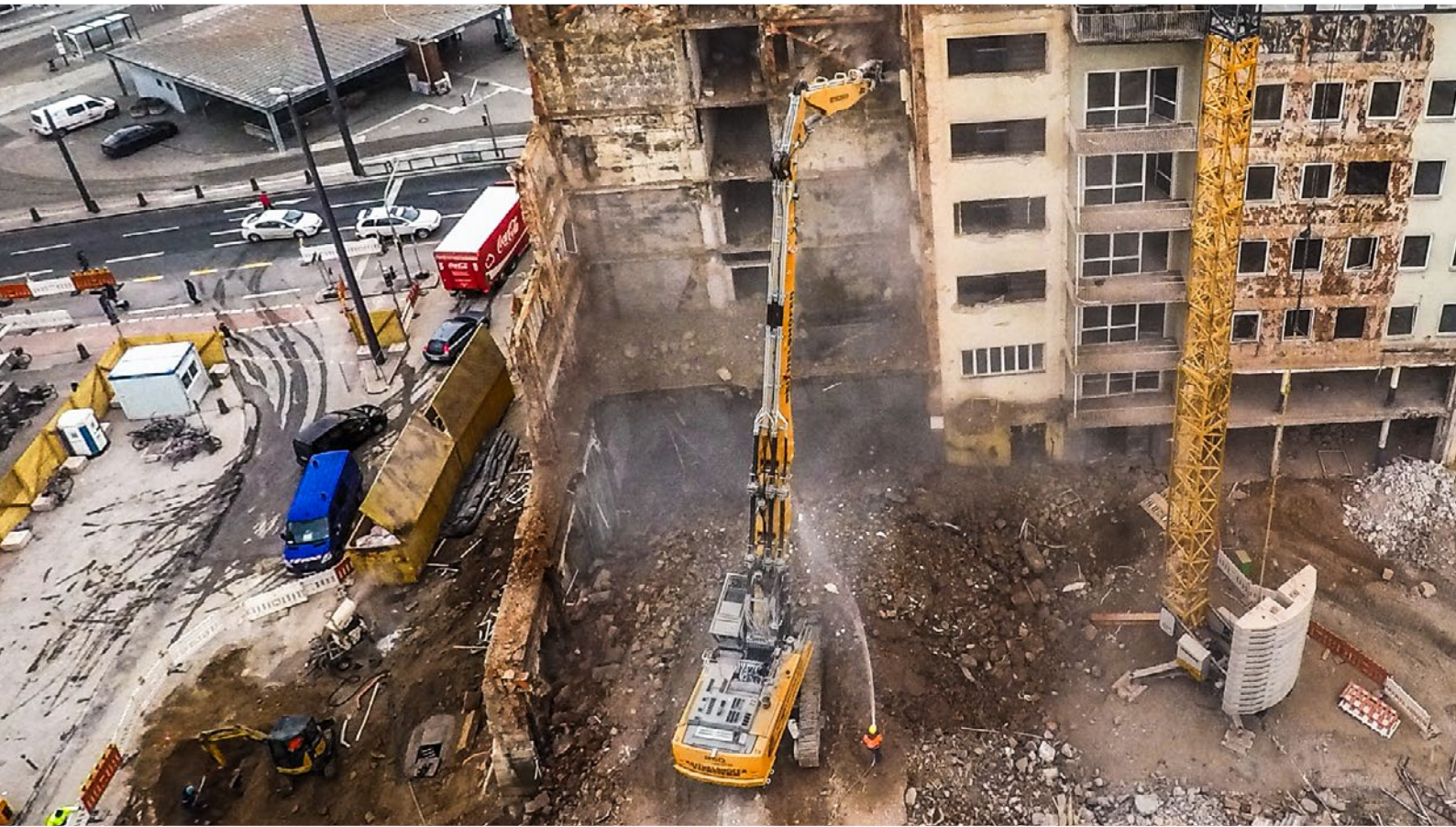
Litronic®

**The Liebherr  
R 950 Demolition Excavator**  
used by  
Reithelshöfer GmbH  
in Nuremberg



# LIEBHERR





## Situation

Reithelshöfer GmbH is one of the leading companies specialising in earthmoving and demolition in the Franconia region of northern Bavaria. Founded in 1966 by Michael Reithelshöfer with one crawler excavator and one truck, the company grew quickly thanks to its demolition activities. Today Reithelshöfer can offer outstanding flexibility with its own quarries for excavating raw materials plus its own recycling and rubble storage facilities, all with a focus on the environment. The company is also characterised by its fleet of modern, high-performance machines and currently employs 230 skilled members of staff.

Staff training is a priority for Reithelshöfer and since 1997 the company has had external ISO 9001 certification for its quality management system, an annual confirmation of staff competency. Projects come from local authorities, businesses and private individuals with each and every solution proposed by Reithelshöfer's engineers tailored to the customer. Similarly, the company's technicians and machine operators guarantee that the work will be performed in line with the requirements of each site. The philosophy of Reithelshöfer's CEO centres on quality and performance. His objective is to strive to ensure customer satisfaction and, more specifically, to 'never stop getting better, as when you do, you stop being good'.



### Problems: Specific requirements

The district around Nuremberg's main station is undergoing a complete restructure in a project intended to improve access links around the station. A true transport hub, the square in front of the station is a busy area for everyday traffic and needs to be made safer. New green spaces are planned along with new, wider paths including both cycle and pedestrian access. Expansion of these thoroughfares means that the former post office building needs to be demolished.

This is a highly specialised task that requires a machine adapted to work within the height constraints. To ensure the success of this operation, Reithelshöfer wanted to add a new demolition machine to its fleet capable of meeting the project's specific safety criteria. The machine in question needed to enable the demolition area to be monitored and to ensure the stability of its operator and Reithelshöfer excluded a number of machines that were not able to meet these criteria. In addition, the size of the building to be demolished necessitated a machine capable of reaching a great working height.

### Solution

To enable it to undertake this demolition project, Reithelshöfer opted for the Liebherr R 950 Demolition crawler excavator. In addition to the safety this machine provides, it was Liebherr's ability to design custom-made equipment that convinced Reithelshöfer to make the investment: like Reithelshöfer, Liebherr offers its customers technical solutions adapted to their needs. The Liebherr-France SAS design office in Colmar was able to design bespoke equipment for its Bavarian customer with a maximum working height of 29 m.

Developed in Colmar alongside the excavator, this special equipment is fitted with a 360-degree aerial camera, maximising operator Ralf Stingl's ability to monitor the areas to the rear and sides of the machine. Thanks to multi couplers that allow for a quick changeover, attachments can be easily replaced in just 20 minutes, which saves precious time.

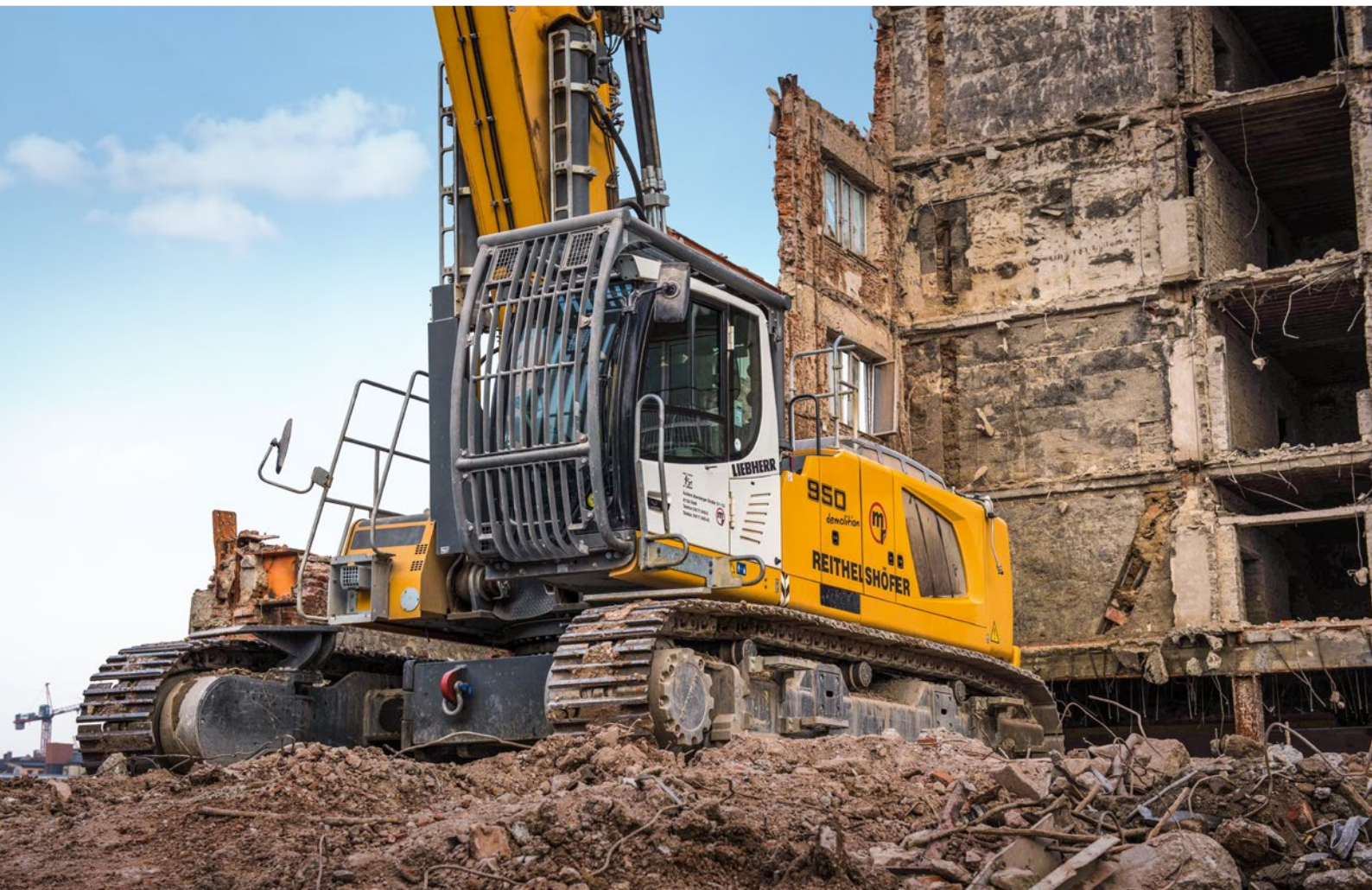
According to Ralf, this demolition excavator offers more engine power than the previous R 944 C model but with lower fuel consumption, something he sees as a great benefit.

To meet safety requirements, Liebherr offers the Liebherr Demolition Control (LDC) system as standard on its demolition excavators. This system keeps the operator informed about the attachment position at all times and guarantees the machine's stability during tasks. With an operating weight of 75 tonnes, including attachments, and engine power of 200 kW / 272 HP,

the R 950 Demolition crawler excavator joins Reithelshöfer's fleet of modern, high-performance machines, which already has several Liebherr models amongst its number, including R 926 crawler excavators and R 936, R 946 and R 950 SME excavators.







### Technical data

Working height	29 m
Operating weight	75,000 kg
Engine	D944 A7, 4-cylinder in-line
Engine power (ISO 9249)	200 kW / 272 HP
Emissions phase	Stage IV

### Demolition-Equipment

Demolition boom extension	2.5 m
Demolition stick	10.2 m
Intermediate boom	2.25 m
Demolition boom	9.0 m

### Liebherr-France SAS

2 avenue Joseph Rey, B.P. 90287, FR-68005 Colmar Cedex  
 ☎ +33 3 89 21 30 30, Fax +33 3 89 21 37 93  
 www.liebherr.com, E-Mail: info.lfr@liebherr.com  
 www.facebook.com/LiebherrConstruction