

Increased value with improved technology

The Truck Mixers



LIEBHERR

Truck Mixer

Versatile and user-friendly

Licro 500 steel
for a long service life

Wide range of accessories
available as an option

Access ladder with spacious platform
for safe working



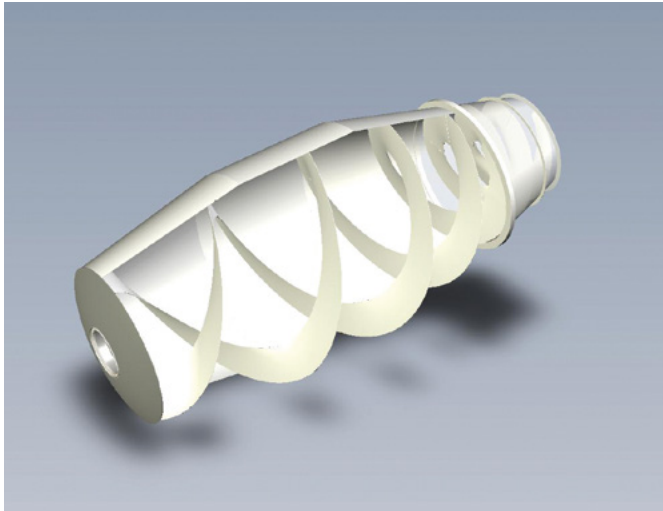
Powerful and maintenance-friendly oil cooler filter unit

Improved drivability
due to low centre of gravity

U-bolt mountings ensure that forces are applied dynamically in the mixer frame

The highest cost efficiency

When developing the Generation 04 truck mixer generation from Liebherr, the focus was placed on maximum cost efficiency, a good price-performance ratio and a long service life. The greater customer benefits can be seen above all in the higher payload, the low cleaning effort and the perfect handling.



Licro 500 steel quality

Newly developed special steel with extremely hard components (titanium carbonitrides) and an optimised chrome content ensure a long drum service life – and thus low maintenance and repair costs.

Specially developed for applications in the truck mixer exclusively for Liebherr. The spiral sheets and the wearing protection strips are also made of Licro 500.

Easy to clean

- Smooth surfaces, few edges for quick and easy cleaning
- The reduction of interfering edges minimises soiling

Optimal handling

- Good ergonomics on the access ladder, control panels and concrete transfer elements
- The swivelling mono-trough arm also facilitates accessibility and handling

Service-friendly

- All components are easily accessible and designed for easy servicing
- Little maintenance required



Options/Technical data

HTM 04 Series



HTM 1004

Optional accessories/equipment:

Frame cover, 2nd drip ring, rubber elevation at the feeding hopper, "Golf" chut flap, pendulum flap, water tank unpressurised 1000 litres, water shut-off tap, water meter, 2nd water connection, cab control, engine start/stop, underrun protection, side collision protection, step on underrun protection, spare wheel holder, emergency draining unit (for hydraulic equipment), contour marking. More options upon request.

Type	HTM 504	HTM 704	HTM 804	HTM 904	HTM 1004	HTM 1204K	HTM 1204	HTM 1204 XL
Nominal filling level¹	5 m ³	7 m ³	8 m ³	9 m ³	10 m ³	12 m ³	12 m ³	12 m ³
Water volume²	5.9 m ³	7.7 m ³	9.1 m ³	10.2 m ³	11.0 m ³	12.6 m ³	12.9 m ³	13.6 m ³
Geometric drum content	9.7 m ³	12.3 m ³	14.3 m ³	16.0 m ³	17.6 m ³	18.3 m ³	20.7 m ³	20.7 m ³
Mixer assembly weight³	3,220 kg	3,480 kg	3,855 kg	4,030 kg	4,350 kg	4,900 kg	4,990 kg	5,040 kg

¹ Nominal filling in compacted mixed concrete.

² Measured in accordance with DIN 459-1 at min. 2 drum rotations per minute. The given values for capacity and water volume only apply to a horizontally aligned mixer frame. A deflection of the frame during loading is not taken into account here and may negatively affect the water volume under certain circumstances. The real maximum filling capacity with concrete depends on the consistency and the rheological characteristics of the concrete. The topology of the road and the driveability also influence the maximum loading volume.

³ Weight details for basic unit with chassis power take-off (PTO), incl. 2 extension chutes, compl. assembled/ready for operation, deviations +/- 5%.