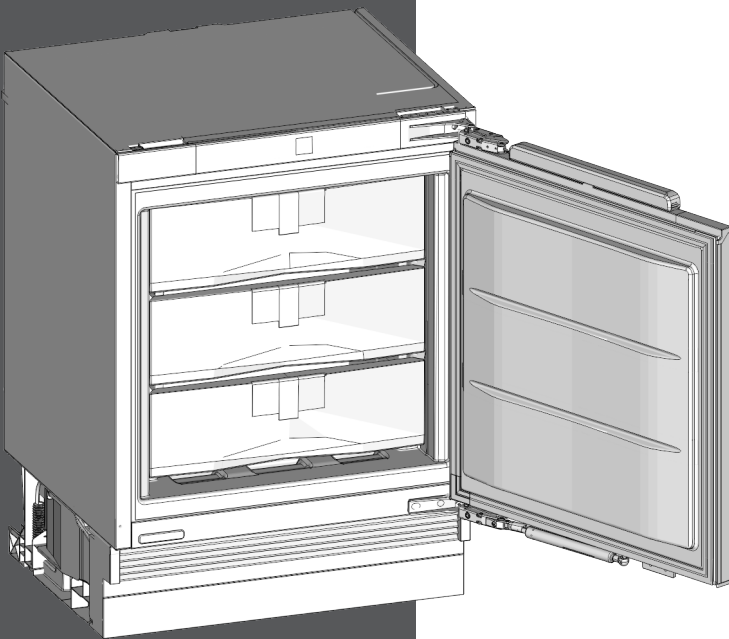


# LIEBHERR

## User Guide

Under-worktop large capacity  
BioFresh refrigerator



UB 501  
20221207 7086662 - 01

# The appliance at a glance

## Contents

|          |   |           |
|----------|---|-----------|
| <b>1</b> | <b>The appliance at a glance.....</b>                                 | <b>2</b>  |
| 1.1      | Additional benefits.....  | 2         |
| 1.2      | Overview of the appliance and accessories...                          | 2         |
| 1.3      | Range of appliance use.....   | 3         |
| 1.4      | Conformity.....   | 3         |
| 1.5      | Energy saving.....  | 3         |
| <b>2</b> | <b>General safety instructions.....</b>                               | <b>3</b>  |
| <b>3</b> | <b>Controls and displays.....</b>                                     | <b>5</b>  |
| 3.1      | Operating and control elements.....                                   | 5         |
| 3.2      | Temperature display.....  | 5         |
| <b>4</b> | <b>Start-up.....</b>  | <b>6</b>  |
| 4.1      | Disposal of packaging.....  | 6         |
| 4.2      | Switching on the appliance.....                                       | 6         |
| <b>5</b> | <b>Operation.....</b>   | <b>6</b>  |
| 5.1      | Temperature display unit.....   | 6         |
| 5.2      | Child-proof lock.....   | 6         |
| 5.3      | Door alarm.....   | 6         |
| 5.4      | SabbathMode.....  | 6         |
| 5.5      | Storing food.....   | 7         |
| 5.6      | Storage times.....  | 7         |
| 5.7      | Setting the temperature.....  | 8         |
| 5.8      | Adjusting humidity.....   | 8         |
| 5.9      | Drawers.....  | 9         |
| 5.10     | Info system.....  | 9         |
| 5.11     | Using the FlexSystem.....   | 9         |
| 5.12     | Shelves.....  | 9         |
| 5.13     | VarioSpace.....   | 10        |
| <b>6</b> | <b>Maintenance.....</b>   | <b>10</b> |
| 6.1      | Defrosting with NoFrost.....  | 10        |
| 6.2      | Cleaning the appliance.....   | 10        |
| 6.3      | Customer service.....   | 10        |
| 6.4      | Appliance Information.....  | 11        |
| <b>7</b> | <b>Troubleshooting.....</b>   | <b>11</b> |
| <b>8</b> | <b>Putting appliance out of service.....</b>                          | <b>13</b> |
| 8.1      | Vacation Tips.....  | 13        |
| 8.2      | Switch off device.....  | 14        |
| 8.3      | Decommissioning .....   | 14        |
| <b>9</b> | <b>Disposal.....</b>  | <b>14</b> |
| 9.1      | Preparing the appliance for disposal.....                             | 14        |
| 9.2      | Disposing of the appliance in an environmentally friendly manner..... | 14        |

Congratulations on the purchase of your new appliance. With this purchase, you have chosen all the advantages of the latest refrigeration technology, guaranteeing you a high-quality appliance with a long life span and high operating safety.

The equipment of your appliance gives you the highest level of day-to-day ease of operation.

Together we are making an active contribution to the conservation of our environment by purchasing this appliance which is manufactured in an environmentally friendly process with the use of recyclable materials.

We hope you enjoy your new appliance.

## 1 The appliance at a glance

### 1.1 Additional benefits

- Natural coolant
- Energy-optimized refrigerant circuit
- Energy-efficient insulation
- Low energy consumption
- User-friendly electronic controls
- Active function indicators
- Temperature can be controlled in the appliance independent of ambient conditions according to its climate rating - Temperature can be displayed as °C or °F
- The appliance defrosts automatically - no need to spend time defrosting
- Safety glass storage shelves
- Shelves can be removed to make space for large items.
- Bright LED interior light
- Door ajar alarm
- Handle grips on all extra-large drawers for easy transport
- Integrated transport grips on appliance housing
- Easy to clean
- Door hinges can be reversed
- Door-on-door system for easy kitchen cabinet installation
- Soft stop mechanisms
- This appliance has a SabbathMode function, so you can use it on religious holidays. Further information can be found on the Star-K website [www.star-k.org](http://www.star-k.org).

### 1.2 Overview of the appliance and accessories

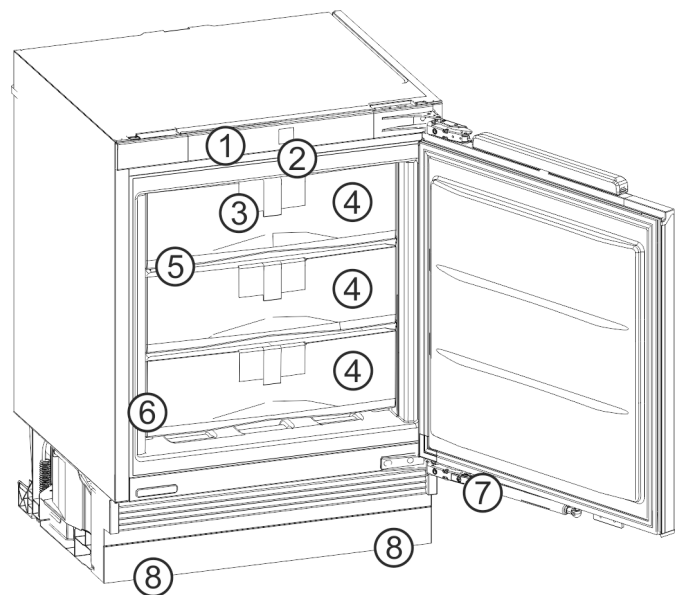


Fig. 1

- |                                    |                     |
|------------------------------------|---------------------|
| (1) Operating and control elements | (5) VarioSpace      |
| (2) Lighting                       | (6) Rating plate    |
| (3) Info system                    | (7) Closing damper  |
| (4) Drawers                        | (8) Adjustable feet |

## Note

- Shelves, drawers, and baskets are arranged for optimal energy efficiency in the factory configuration.

## 1.3 Range of appliance use

### Normal use

This appliance is intended to be used in household and similar applications such as,

- staff kitchen areas in shops, offices and other working environments;
- farm houses and by clients in hotels, motels and other residential type environments;
- bed and breakfast type environments;
- catering and similar non-retail applications.

The appliance is not suitable for freezing food; The appliance is suitable for integrated under worktop use

All other types of uses are not permitted.

### Foreseeable misuse

The following uses are specifically prohibited:

- Storage and cooling of medication, blood plasma, laboratory preparations or similar substances and products in accordance with the CMDCAS and FDA 510(k)
- Use outdoors
- Use in moist areas exposed to the rain
- Use in areas at risk of explosion

Incorrect appliance use can cause damage to the stored products or cause them to spoil.

### Climate ratings

The appliance is set to operate within specific ambient temperature limits according to its climate rating. The climate rating for your appliance is printed on the rating plate

## Note

- To guarantee trouble-free operation, comply with the indicated ambient temperatures.

| Climate rating | for ambient temperatures from |
|----------------|-------------------------------|
| SN             | 10 °C to 32 °C                |

| Climate rating | for ambient temperatures from |
|----------------|-------------------------------|
| N              | 16 °C to 32 °C                |
| ST             | 16 °C to 38 °C                |
| T              | 16 °C to 43 °C                |

## 1.4 Conformity

The refrigerant circuit has been tested for leaks. When installed, the appliance complies with the applicable safety regulations and with the corresponding directives.

The BioFresh compartment meets the requirements of a cold storage compartment as set out in EN ISO 8561.

## 1.5 Energy saving

- Always ensure good ventilation. Keep clear of obstruction all ventilation openings in the appliance enclosure or in the structure for building-in.
- Never block air slits in the fan.
- Do not install the appliance in direct sunlight or next to a stove, heater or similar heat source.
- Energy consumption depends on installation conditions such as the ambient temperature (see 1.3 Range of appliance use). A warmer ambient temperature can increase the energy consumption.
- Avoid opening the appliance door for any longer than necessary
- The lower the temperature is set the higher the energy consumption.
- All food stored in the appliance should be well wrapped and covered. This prevents frost buildup.
- Only take food out for as long as necessary so that it does not get too warm.
- Insertion of warm foods: first let the food cool down to room temperature.

## 2 General safety instructions

Please keep these operating instructions in a safe place so you can refer back to them at any time.

If you pass the appliance on, please hand these operating instructions to the new owner.

Read and follow these instructions. They contain safety information which is important for safe and problem-free installation and operation. Always read and follow the safety information.

### Dangers for the user:

- This appliance is not intended for use by persons (including children) with reduced

## General safety instructions

---

physical, sensory or mental capabilities, or lack of experience and knowledge, unless they have been given supervision or instruction concerning use of the appliance by a person responsible for their safety. Children should be supervised to ensure that they do not play with the appliance. Cleaning and user maintenance must not be performed by children unless they are supervised. Children between the ages of 3 and 8 may load and unload the appliance. Children under the age of 3 must be kept away from the appliance unless they are constantly supervised.

- **IMPORTANT:** The power plug must be easily accessible so that the appliance can be disconnected from the mains quickly in an emergency. It must not be behind the back of the appliance.
- The socket must be easily accessible so that the appliance can be disconnected quickly from the electricity in an emergency. It must not be located in the area behind the appliance.
- Always hold the appliance at the plug when disconnecting it from the household power. Do not pull on the cable.
- Disconnect the power plug or fuse if there is a malfunction.
- Do not damage the power cable. Do not operate the appliance with a faulty power cable. If the supply cord is damaged, it must be replaced by the manufacturer, its service agent or similarly qualified persons in order to avoid a hazard. For Plug and Play connections, the change may be carried out by the customer.
- Only have repairs, work on the appliance and power cable replacements carried out by Customer Service or other qualified personnel specifically trained for the purpose.
- Only install, connect and dispose of the appliance in accordance with the instructions.
- Only operate the appliance after it has been installed.

### Risk of fire:

- The refrigerant contained within the appliance (specifications on the identification

plate) is environmentally friendly, but flammable. Leaking refrigerant can ignite.

- **WARNING:** Do not damage the refrigerant circuit.
- Do not handle ignition sources inside the appliance.
- **WARNING:** Do not use electrical appliances inside the food storage compartments of the appliance, unless they are of the type recommended by the manufacturer (e.g. steam cleaning appliances, heating appliances, ice cream makers).
- If refrigerant leaks: Remove naked flames or ignition sources located near the area of the leak. Ventilate the room well. Contact Customer Service.
- Do not operate the appliance near explosive gases.
- Do not store or use gasoline or other flammable gases and liquids near the appliance.
- Do not store explosive substances such as aerosol cans with a flammable propellant in this appliance. You can recognize such spray cans by the printed list of contents or by a flame symbol. Any leaking gases can be ignited by electrical components.
- Alcoholic beverages or other containers holding alcohol must always be tightly sealed for storage purposes. Any leaking alcohol can be ignited by electrical components.

### Risk of falling or toppling over:

- **WARNING:** To avoid a hazard due to instability of the appliance, it must be fixed in accordance with the instructions.
- Do not stand on the base, drawers, doors etc. or use them as improper supports. This applies in particular to children.

### Danger of poisoning:

- Do not consume spoiled food.

### Danger of frostbite, feeling of numbness and pain:

- Avoid prolonged skin contact with cold surfaces or chilled/frozen food or take protective measures, e.g. wear gloves.

### Risk of injury and damage:

- Hot steam may cause injuries. Do not use any electrical heating or steam cleaning equipment, naked flames or defrosting sprays for defrosting measures.

- **WARNING:** Do not use mechanical devices or other means to accelerate the defrosting process, other than those recommended by the manufacturer.
- Do not remove ice using sharp objects.
- **WARNING:** Keep clear of obstruction all ventilation openings in the appliance enclosure or in the structure for building-in.
- **WARNING:** Risk of child entrapment. Before you throw away your old refrigerator or freezer:
  - Take off the doors.
  - Leave the shelves in place so that children may not easily climb inside.

## Risk of crushing:

- Do not hold onto the hinge when opening and closing the door. Fingers may become trapped.

## California Proposition 65

- **WARNING:** This product can expose you to chemicals including Diisononyl Phthalate (DINP), which is known to the State of California to cause cancer, and Diisodecyl Phthalate (DIDP), which is known to the State of California to cause birth defects or other reproductive harm. For more information, go to [www.P65Warnings.ca.gov](http://www.P65Warnings.ca.gov)

## Symbols on the device:



The symbol may be located on the compressor. It refers to the oil in the compressor and refers to the following danger: Can be fatal if swallowed or inhaled. This notice only applies for recycling. There is no danger during normal operation.



**WARNING:** Risk of fire / flammable materials. The symbol is located on the compressor and indicates the danger from flammable materials. Do not remove the label.



This label or a similar one may be located on the rear of the appliance. It refers to the foam panels in the door and/or the housing. This notice only applies for recycling. Do not remove the label.

**Observe the warning messages and other detailed information in the other sections:**

|  |         |   |
|--|---------|---|
|  | DANGER  | Indicates an immediately hazardous situation, which if not avoided, will result in death or serious injury. |
|  | WARNING | Indicates a hazardous situation, which if not avoided, could result in death or serious injury.             |
|  | CAUTION | Indicates a hazardous situation, which if not avoided, could result in minor or moderate injury.            |
|  | NOTICE  | Indicates a hazardous situation, which if not avoided, could result in damage to property.                  |
|  | Note    | Indicates useful advice and tips.   |

## 3 Controls and displays

### 3.1 Operating and control elements

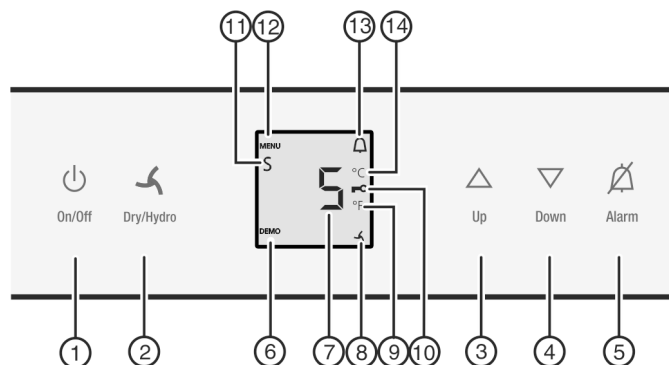


Fig. 2

- |                         |                          |
|-------------------------|--------------------------|
| (1) On/Off button       | (8) Dry/Hydro symbol     |
| (2) Dry/Hydro button    | (9) Fahrenheit display   |
| (3) Up button           | (10) Child safety symbol |
| (4) Down button         | (11) Sabbath mode symbol |
| (5) Alarm button        | (12) MENU symbol         |
| (6) DEMO symbol         | (13) Alarm symbol        |
| (7) Temperature display | (14) Celsius display     |

### 3.2 Temperature display

The following is displayed in normal operation:

- the set BioFresh temperature

The temperature display flashes:

- the temperature setting has been changed

The following displays indicate malfunction. Possible causes and corrective actions: (see 7 Troubleshooting.)

- **F0 to F9**

# Start-up

## 4 Start-up

### 4.1 Disposal of packaging



#### WARNING

Danger of suffocation from packaging materials and films!

- ▶ Do not allow children to play with packaging materials.

The packaging is made from recyclable materials:



- Corrugated card/cardboard
- Parts made of foamed polystyrene
- Films and bags from polyethylene
- Packing bands from polypropylene
- Wood frame nailed together with a polyethylene window\*
- ▶ Take the packaging material to an official collection point.

### 4.2 Switching on the appliance

- ▶ Open the door.
- ▶ Press On/Off button *Fig. 2 (1)*.
- ▷ The temperature display displays the temperature setting.
- ▷ The interior light comes on when the door is opened.
- ▷ Whenever “DEMO” appears on the display, the appliance is running in demonstration mode. Contact the customer service department.

## 5 Operation

### 5.1 Temperature display unit

The temperature display can be changed from °F to °C.

#### 5.1.1 To change the unit

- ▶ To activate setting mode: Press and hold the Dry/Hydro button *Fig. 2 (2)* for approx. 5 s.
- ▷ The Menu symbol *Fig. 2 (12)* lights up.
- ▷ **5** is displayed in the temperature display.
- ▶ Using Up button *Fig. 2 (3)*/ Down button *Fig. 2 (4)* select °.
- ▶ To confirm: Briefly press the Dry/Hydro button *Fig. 2 (2)*.
- ▷ The temperature unit is displayed.
- ▶ To confirm: Briefly press the Dry/Hydro button *Fig. 2 (2)*.
- ▷ ° flashes.
- ▶ To exit setting mode: Press On/Off button *Fig. 2 (1)*.
- or-
- ▶ Wait 5 minutes.



- ▷ The temperature is again displayed in the temperature display.

### 5.2 Child-proof lock

You can use the child-proof lock to lock the buttons. This means that children cannot accidentally switch off the appliance when playing.



#### 5.2.1 Switching on the child-proof lock

- ▶ To activate setting mode: Press and hold the Dry/Hydro button *Fig. 2 (2)* for approx. 6 s.
- ▷ **5** is shown on the display.
- ▷ The Menu symbol *Fig. 2 (12)* lights up.
- ▶ Press the Dry/Hydro button *Fig. 2 (2)* briefly to confirm.
- When **cl** is shown on the display:
- ▶ To switch on the child-proof lock, press the Dry/Hydro button *Fig. 2 (2)* briefly.



- ▷ The Child safety symbol *Fig. 2 (10)* lights up. **c** flashes on the display.
- When **cl** is shown on the display:
- ▶ To switch off the child-proof lock, press the Dry/Hydro button *Fig. 2 (2)* briefly.
- ▷ The Child Safety symbol *Fig. 2 (10)* goes out. **c** flashes on the display.
- ▶ To cancel setting mode: Press the On/Off button *Fig. 2 (1)*.

-or-

- ▶ Wait 5 mins.

- ▷ The temperature is again displayed on the temperature display.

### 5.3 Door alarm

If the door is open for longer than 180 seconds, the acoustic warning sounds.

The acoustic warning stops automatically when the door is closed



#### 5.3.1 Switching off the door alarm

The acoustic warning can be switched off when the door is open. The acoustic warning remains switched off as long as the door is open. When the door is closed, the alarm function is active again.

- ▶ Press Alarm button *Fig. 2 (5)*.
- ▷ The door alarm stops.

### 5.4 SabbathMode

This function meets the religious requirements of the Sabbath or Jewish festivals. Turn on SabbathMode to switch off certain controls. After setting up SabbathMode, you no longer need to worry about indicator lights, figures, symbols, displays, alarms, or fans. The thawing cycle only operates at the specified time

without taking refrigerator use into account. After a power outage, the appliance automatically switches back to SabbathMode.

You can find a list of Star-K-certified appliances at [www.star-k.org/appliances](http://www.star-k.org/appliances).



## WARNING

Danger of food poisoning!

If there is a power outage when SabbathMode is on, this message is not saved. When the power is restored, the appliance continues in SabbathMode. Afterwards, the temperature display does not show a message about the power outage.

If there was a power outage during SabbathMode:

► Check the quality of the food. Do not consume spoiled food!

- All functions are locked until SabbathMode is switched off.
- If functions such as SuperFrost, SuperCool, Ventilation, etc. are activated when SabbathMode is on, they remain active.
- No audible signals are emitted, and the temperature display does not indicate any warnings or settings (such as a temperature alarm or door alarm).
- Light does not operate.

### 5.4.1 Setting Sabbath mode

► To activate setting mode: Press and hold the Dry/Hydro button *Fig. 2 (2)* for approx. 5 s.

▷ 5 flashes on the display.

▷ The Menu symbol *Fig. 2 (12)* lights up.

► To access the Sabbath mode function: Briefly press the Dry/Hydro button *Fig. 2 (2)*.

When **SI** is shown on the display:

► **To turn on** Sabbath mode, briefly press the Dry/Hydro button *Fig. 2 (2)*.

When **SO** is shown on the display:

► **To turn off** Sabbath mode, briefly press the Dry/Hydro button *Fig. 2 (2)*.

► To deactivate setting mode: Press the On/Off button *Fig. 2 (1)*.

-or-

► Wait 5 min.

▷ The Sabbath Mode symbol *Fig. 2 (11)* appears on the temperature display as long as Sabbath Mode is active.

▷ Sabbath mode switches off automatically after 120 hours if it is not manually switched off beforehand.

## 5.5 Storing food



### WARNING

Danger of fire

► Do not use electrical appliances inside the food storage compartments of the appliance, unless they are of the type recommended by the manufacturer.

### Note

► Do not store vegetables that do not support cold temperatures (such as cucumbers, eggplant, tomatoes, zucchini, and all cold-sensitive exotic fruits) in the BioFresh compartment.

The fresher the product and the better the quality, the longer it can be stored.

► When shopping, make sure the food you purchase is fresh.

► To prevent spoilage due to the transfer of bacteria: Store unpackaged animal products and plant-based products in separate compartments. This also applies for different types of meat.

If you must store food together to save space:

► Keep the food packaged.

► Each drawer can hold max. 25 kg.

► Each plate can hold 35 kg.

## 5.6 Storage times

### Guideline for the shelf-life at low air humidity at 0 °C

|                    |       |     |      |
|--------------------|-------|-----|------|
| Butter             | up to | 90  | days |
| Hard cheese        | up to | 110 | days |
| Milk               | up to | 12  | days |
| Sausage, cold cuts | up to | 9   | days |
| Poultry            | up to | 6   | days |
| Pork               | up to | 7   | days |
| Beef               | up to | 7   | days |
| Game               | up to | 7   | days |

### Note

► Note that higher-protein foods spoil more quickly. This means that shellfish and crustaceans spoil more quickly than fish, and fish spoils more quickly than meat.

### Guideline for the shelf-life at high air humidity at 0 °C

| Vegetables, lettuce |       |    |      |
|---------------------|-------|----|------|
| Artichokes          | up to | 14 | days |
| Celery              | up to | 28 | days |
| Cauliflower         | up to | 21 | days |



# Operation

## Guideline for the shelf-life at high air humidity at 0 °C

|                  |       |     |      |
|------------------|-------|-----|------|
| Broccoli         | up to | 13  | days |
| Endives          | up to | 27  | days |
| Mâche            | up to | 19  | days |
| Peas             | up to | 14  | days |
| Kale             | up to | 14  | days |
| Carrots          | up to | 80  | days |
| Garlic           | up to | 160 | days |
| Cabbage turnip   | up to | 55  | days |
| Iceberg lettuce  | up to | 13  | days |
| Herbs            | up to | 13  | days |
| Leeks            | up to | 29  | days |
| Mushrooms        | up to | 7   | days |
| Radishes         | up to | 10  | days |
| Brussels sprouts | up to | 20  | days |
| Asparagus        | up to | 18  | days |
| Spinach          | up to | 13  | days |
| Savoy cabbage    | up to | 20  | days |
| <b>Fruit</b>     |       |     |      |
| Apricots         | up to | 13  | days |
| Apples           | up to | 80  | days |
| Pears            | up to | 55  | days |
| Blackberries     | up to | 3   | days |
| Dates            | up to | 180 | days |
| Strawberries     | up to | 7   | days |
| Figs             | up to | 7   | days |
| Blueberries      | up to | 9   | days |
| Raspberries      | up to | 3   | days |
| Red currants     | up to | 7   | days |
| Cherries, sweet  | up to | 14  | days |
| Kiwi             | up to | 80  | days |
| Peaches          | up to | 13  | days |
| Plums            | up to | 20  | days |
| Cranberries      | up to | 60  | days |
| Rhubarb          | up to | 13  | days |
| Gooseberries     | up to | 13  | days |
| Grapes           | up to | 29  | days |

## 5.7 Setting the temperature

The temperature is set automatically to just above 0 °C.

You can adjust the temperature slightly higher or lower. The temperature can be adjusted from **bl** (coldest) to **b9** (warmest). The default setting is **b5**. If you select a setting between **bl** and **b4** the temperature may fall below 0 °C, causing food to become slightly frozen.

► To set a higher temperature: Press the Up adjustment button *Fig. 2 (3)* until the temperature flashes in the display. Release the button.

► To set a lower temperature: Press the Down adjustment button *Fig. 2 (4)* until the temperature flashes in the display. Release the button.

▷ The previous value is displayed on the temperature display.

► To change the temperature gradually: Press the button briefly.

-or-

► To change the temperature continuously: Hold the button down.

▷ The values **bl** to **b9** are displayed while the settings are being changed.

▷ The actual temperature is displayed about 5 seconds after the last button has been pressed. The temperature slowly adjusts to the new value.


## 5.8 Adjusting humidity

The humidity in the appliance can be adjusted depending on the food to be stored.

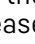
With the **dry** setting, a dry climate is created that is suitable for storing packaged foods (dairy products, meat, fish, and sausage). The appliance consumes less energy in this operating mode.

With the **hydro** setting, a humid climate is created that is suitable for storing loose-leaf lettuce, vegetables and fruit with a high moisture content. When the drawers are full, this creates a cool, fresh environment with an air humidity of up to 90 %.

The humidity level in the compartment depends on the moisture content of the food inside and on how often the compartment is opened. The default setting is **dry**.

► To set **hydro**: Press and hold the dry/hydro button (4) until the  symbol is shown. Release the button.

▷ The dry/hydro symbol (5) lights up.

► To set **dry**: Press and hold the dry/hydro button (4) until the  symbol goes out. Release the button.

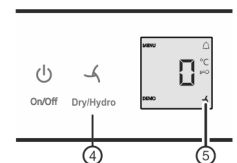


Fig. 3



## 5.9 Drawers

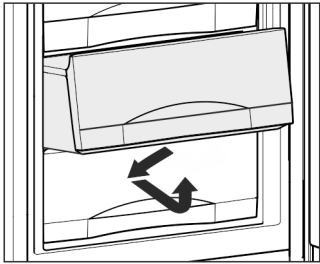


Fig. 4

- In order to remove the drawers with a door opening angle of 90°:
- Press the drawers to the side slightly when pulling them out, and then remove them from above.

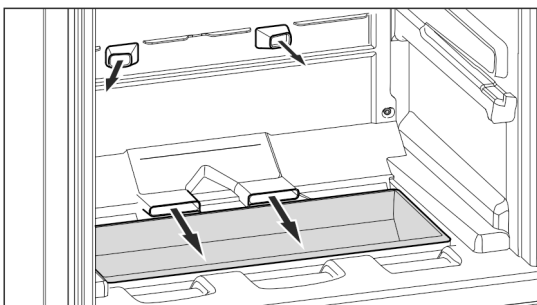


Fig. 5

- The vegetable drawer in the bottom recess can be used to store small items that are not needed very often.
- To store food to be refrigerated directly on the shelves: pull the drawer forward and lift it out.

## 5.10 Info system

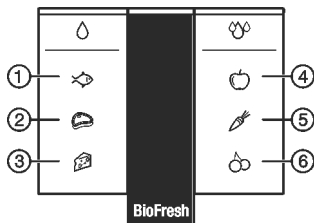


Fig. 6

- (1) Fish
- (2) Meat
- (3) Cheese
- (4) Fruit
- (5) Vegetables
- (6) Fruit

Drops indicate the storage climate for the indicated types of food.

1 drop : Dry climate

3 drops : Humid climate

## 5.11 Using the FlexSystem

The FlexSystem helps you store and organize your food in a clear and flexible way. It lets you clearly divide your food into fruit, vegetables or by use-by dates, for example.

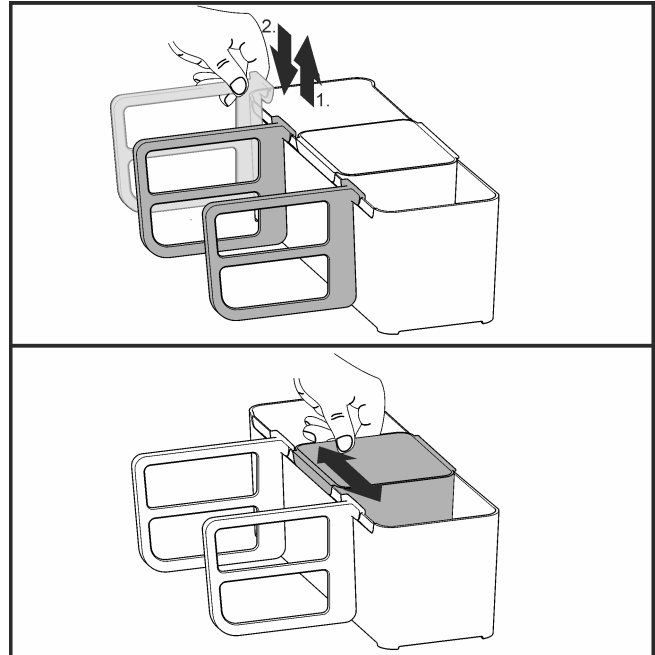


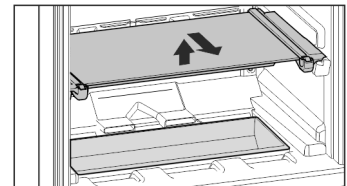
Fig. 7

- You can dismantle the FlexSystem for cleaning.

## 5.12 Shelves

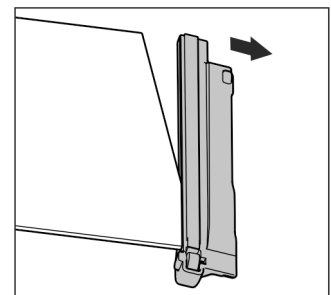
### 5.12.1 Moving shelves

- To remove shelf: lift it at the front and pull out forward.
- To reinsert shelf: simply slide it in as far as it will go.



### 5.12.2 Dismantling shelves

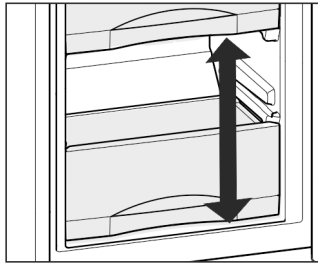
- The shelves can be dismantled for cleaning.



# Maintenance

## 5.13 VarioSpace

In addition to the drawers, you can also take out the shelves. This gives you space for large food items such as poultry, meat, large joints of game and tall bakery items can be frozen and then presented whole.



- ▶ Each drawer can hold max. 25 kg of frozen food.
- ▶ Each plate can hold 35 kg of frozen food.

## 6 Maintenance

### 6.1 Defrosting with NoFrost



#### WARNING

Appliance incorrectly defrosted!  
Injuries and damage.

- ▶ Do not use mechanical devices or other means to accelerate the defrosting process, other than those recommended by the manufacturer.
- ▶ Do not use any electrical heating or steam cleaning equipment, naked flames or defrosting sprays.
- ▶ Do not remove ice with sharp objects.

The NoFrost system defrosts the appliance automatically.

The moisture condenses on the evaporator and is periodically defrosted and evaporated.

- ▶ The appliance does not need to be defrosted manually.

### 6.2 Cleaning the appliance

Clean the appliance regularly.



#### WARNING

Danger of electric shock.

- ▶ Unplug refrigerator or disconnect power.



#### WARNING

Danger of fire

- ▶ Do not damage the refrigerant circuit.



#### WARNING

Risk of injury or damage due to hot steam.

Hot steam can cause scalding/burns and damage to surfaces.

- ▶ Do not use steam cleaners.

#### NOTICE

Incorrect cleaning damages the appliance.

- ▶ Do not use concentrated cleaning agents.
- ▶ Do not use steel wool or sponges that scour or scratch.
- ▶ Do not use caustic or abrasive cleaning materials or those containing sand, chloride, or acids.
- ▶ Do not use chemical solvents.
- ▶ Do not damage or remove the rating plate on the inside of the appliance. It is vital for the customer service department.
- ▶ Do not pull off, kink or damage any cables or other components.
- ▶ Do not let cleaning water get into the drain gutter, the ventilation grille and electrical parts.
- ▶ Use soft cleaning cloths and a multi-purpose cleaning agent with a neutral pH value.
- ▶ Only use food-compatible cleaning and care agents inside the appliance.

- ▶ **Empty the appliance.**

- ▶ **Disconnect the power plug.**



- ▶ Clean the **ventilation grilles** regularly.

▷ Dust deposits increase energy consumption.

- ▶ Clean the **plastic surfaces, outside and inside**, by hand using lukewarm water and a little dish washing liquid.

- ▶ Most of the **equipment parts** can be dismantled for cleaning: see the respective chapter.

#### After cleaning:

- ▶ Wipe the appliance and accessories dry.
- ▶ Connect the appliance and switch it on again.  
When the temperature is sufficiently cold:
  - ▶ put the food back in the appliance.

### 6.3 Customer service

First check whether you can remedy the fault yourself. (see 7 Troubleshooting.) . If this is not the case, please contact Customer Service.



#### WARNING

Unprofessional repair!

Injuries.

- ▶ A damaged power cable may only be replaced by the manufacturer, the manufacturer's Customer Service or a similarly qualified person.
- ▶ For appliances with plug and play connection cables, the change can be made by the customer.

- Read the appliance designation *Fig. 8 (1)*, service no. *Fig. 8 (2)* and serial no. *Fig. 8 (3)* from the rating plate. The rating plate is located inside the appliance on the left-hand side.

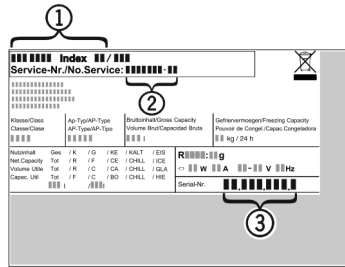


Fig. 8

- Notify a qualified service provider, specifying the fault, appliance designation *Fig. 8 (1)*, service no. *Fig. 8 (2)* and serial *Fig. 8 (3)* no.
- This will help us to provide you with a faster and more accurate service.
- Keep the appliance closed until the Customer Service engineer arrives.
- The food will stay cool longer.
- Disconnect the power plug (do not pull on the power cord to do this) or switch off the fuse.

Type Designation: \_\_\_\_\_  
 Service Number: \_\_\_\_\_  
 Appliance / Serial Number: \_\_\_\_\_  
 Date of purchase: \_\_\_\_\_  
 Where purchased: \_\_\_\_\_

## 7 Troubleshooting.

Your appliance is designed and manufactured for reliable operation and a long lifespan. If a malfunction nonetheless occurs during operation, please determine if the malfunction is due to an operating error. If a service call determines operator error, you will be charged for the costs incurred, even during the warranty period. You may be able to rectify the following problems yourself:

### 6.4 Appliance Information



Make a note of this information when the appliance is installed:

| Defect   | Cause  | Remedy   |
|--|--|--|
| <b>The appliance does not work.</b>  | The appliance is not switched on.  | ► Switch on the appliance.   |
|  | The power plug is not properly inserted in the wall socket.  | ► Check the power plug.  |
|  | The fuse in the wall socket is not OK.   | ► Check the fuse.  |
|  | Power failure  | ► Keep the appliance closed.<br>► Protect the food: place dry ice on top of the food or use an alternate freezer, if the power failure persists for some time.<br>► Do not re-freeze defrosted food. |
| <b>The compressor runs for a long time.</b>  | When less refrigeration is required, the speed-controlled compressor switches to a low speed. Although the running time is increased as a result, energy is saved. | ► This is normal in energy-saving models.  |
|  | HydroCool is switched on.  | ► The compressor runs longer to cool down the food quickly. This is normal.  |
| <b>An LED at the lower rear of the appliance (near the compressor) flashes regularly every 5 seconds*.</b> | There is a fault.  | ► Contact the customer service department (see 6 Maintenance).   |
|  | The different speed levels of speed-controlled* compressors  | ► These noises are normal.   |

## Troubleshooting.

| Defect  | Cause  | Remedy   |
|---|--|--|
| Noises are too loud.  | can cause them to generate various noises during operation.  |  |
| A gurgling sound  | This sound comes from the refrigerant flowing in the refrigeration circuit.  | ► The sound is normal.   |
| A faint clicking sound  | The sound always occurs when the refrigeration unit (the motor) automatically switches on or off.  | ► The sound is normal.   |
| A hum. It is briefly a little louder when the refrigeration unit (the motor) switches on. | Refrigeration increases automatically when the HydroCool function is activated, fresh food has just been placed in the appliance or the door has been left open for a while. | ► These noises are normal.                                       |
|   | The refrigeration increases automatically when fresh food has just been placed in the appliance or the door has been left open for a while.                                  | ► The sound is normal.   |
|   | The ambient temperature is too high.   | ► Solution: (see 1.3 Range of appliance use)                     |
| A low hum   | The sound occurs as a result of fan air flow.  | ► The sound is normal.   |
| The fan continues to run.   | With the “hydro” setting the fan must run for longer for operational reasons.  | ► This is normal.  |
| Vibration noise   | The appliance is not standing firmly on the floor. As a result, objects and adjoining units are set into vibration by the running refrigeration unit.                        | ► Check the installation and realign the appliance if necessary. |
| Flow noise on the soft stop mechanism.  | The sound is caused by the soft stop mechanism.  | ► The sound is normal.   |
| The temperature display indicates: F0 to F9.  | There is a fault.  | ► Contact the customer service department (see 6 Maintenance).   |
| DEMO lights up in the temperature display.  | The demo mode is activated.  | ► Contact the customer service department (see 6 Maintenance).   |
| The outside surfaces of the appliance are hot*.   | The heat of the refrigerant circuit is used to prevent condensate from forming.  | ► This is normal.  |
| The temperature is not cold enough.   | The door of the appliance is not closed properly.  | ► Close the appliance door.                                      |
|   | Insufficient ventilation.  | ► Clear and clean the ventilation grille.                        |

## Putting appliance out of service

| Defect   | Cause  | Remedy  |
|--|--|---|
|  | The ambient temperature is too high.   | ► Solution: (see 1.3 Range of appliance use)  |
|  | The appliance was opened too frequently or for too long.                                   | ► Wait to see whether the required temperature resets itself by itself. If not, contact the customer service department (see 6 Maintenance) .   |
|  | The temperature is incorrectly set.  | ► Set to a colder temperature and check after 24 hours  |
|  | The appliance is too near to a heat source (stove, heater etc).                            | ► Change location of appliance or the heat source.  |
|  | The appliance was not properly installed in the recess.                                    | ► Make sure the appliance was installed correctly and the door closes properly.   |
| <b>The interior light does not turn on.</b>                                | The appliance is not switched on.  | ► Switch on the appliance.  |
|  | The door was open for longer than 15 min.  | ► The interior light automatically switches itself off if the door remains open for approx. 15 min.   |
|  | The LED interior light is faulty or the cover is damaged:                                  | <div>  <b>WARNING</b><br/>           Risk of injury from electrical shock.<br/>           Live parts are under the cover.<br/>           ► The LED interior light should only be replaced or repaired by the Customer Service department or by engineers trained to do so.         </div> <hr/> <div>  <b>WARNING</b><br/>           Risk of injury from LED lamp!<br/>           The light intensity of the LED lighting corresponds to risk group RG 2.<br/>           If the cover is faulty:<br/>           ► Do not gaze directly at this lighting unit with optical lenses while very close to the light source. This can cause damage to your eyes.         </div> |
| <b>The door seal is defective or should be replaced for other reasons.</b> | The door seal is interchangeable. You can replace it without the use of any special tools. | ► Contact the customer service department (see 6 Maintenance) :   |
| <b>The appliance is iced up or condensation is building.</b>               | The door seal may have slipped out of its groove.  | ► Check the door seal is well placed in the groove.   |

## 8 Putting appliance out of service

### 8.1 Vacation Tips

**Short vacations:** If you will be away for less than four weeks

► Use all perishables.

**Long vacations:** If you will be away for a month or more

► Remove all food from the appliance.

► Turn OFF the appliance.

► Clean the appliance (see 6.2 Cleaning the appliance) .

► Leave the door open to prevent unpleasant odors.

## Disposal

▷ This will also keep mold from building up.

### 8.2 Switch off device

- ▶ On/Off button *Fig. 2 (1)* press and hold down for about 2 seconds.
- ▷ A long beep sounds. The temperature display is dark. The appliance is switched off.
- ▷ If the appliance cannot be switched off, the Child Safety function is still activated (see 5.2 Child-proof lock).



### 8.3 Decommissioning

- ▶ Empty the appliance.
- ▶ Switch off the appliance (see 8 Putting appliance out of service).
- ▶ Pull out the power plug.
- ▶ Clean the appliance (see 6.2 Cleaning the appliance).
- ▶ Leave the door open to prevent bad smells.



## 9 Disposal

### 9.1 Preparing the appliance for disposal



#### WARNING

Risk of child entrapment!

Before you throw away your old refrigerator or freezer:

- ▶ Take off the doors.
- ▶ Leave the shelves in place so that children may not easily climb inside.



**Li-Ion**

Liebherr uses batteries in some of its appliances. You should remove these before disposal of the old appliance for environmental reasons. If your appliance contains batteries, a corresponding notice is attached to the appliance.

**Lamps** If you can remove the lamps yourself without destroying them, also remove these before disposal.

- ▶ Take the appliance out of operation. (see 8.3 Decommissioning)
- ▶ Appliance with batteries: Remove the batteries. For description, see **Maintenance** chapter.
- ▶ If possible: Remove lamps without destroying them.

### 9.2 Disposing of the appliance in an environmentally friendly manner



**Li-Ion**



**Li-Ion**

The appliance still contains valuable materials and must be collected separately from unsorted municipal waste so it can be recycled.

Dispose of batteries separately from the old appliance. Certain batteries should NOT go in household garbage or recycling bins. Waste batteries can always be recycled or taken to household hazardous waste collection points. To prevent fires from lithium-ion batteries, tape battery terminals and/or place batteries in separate plastic bags and never put these batteries in household garbage or recycling bins.

**Lamps**

Dispose of removed lamps via the respective collection systems.

For USA:

Check the Responsible Appliance Disposal (RAD) program to find a RAD partner near you.

For Canada:

Follow your local guidance about recycling and disposal capabilities near you.



#### WARNING

Leaking refrigerant and oil!

Fire. The refrigerant contained within the appliance is environmentally friendly, but flammable. The oil contained within the appliance is flammable. Escaping refrigerant and oil can ignite if they are of high enough concentration and are exposed to an external heat source.

- ▶ Do not damage the pipelines of the coolant circuit and the compressor.

- ▶ Transport the appliance away without damaging it.
- ▶ Dispose of batteries, lamps, and the appliance according to the above specifications.





**For Service in the U.S.:**

**Liebherr Service Center**

**Toll Free: 1-866-LIEBHER or 1-866-543-2437**

Service-appliances.us@liebherr.com  
PlusOne Solutions, Inc.  
3501 Quadrangle Blvd, Suite 120  
Orlando, FL 32817

**For Service in Canada:**

**Liebherr Service Center**

**Toll Free: 1-888-LIEBHER or 1-888-543-2437**

www.euro-parts.ca  
EURO-PARTS CANADA  
39822 Belgrave Road  
Belgrave, Ontario, N0G 1E0  
Phone: (519) 357-3320  
Fax: (519) 357-1326



**www.liebherr-appliances.com**