

Timber handling

LIEBHERR

Material handling



Liebherr specialist machines for timber handling

Regardless of whether it is used as a fuel, component or piece of furniture: Timber is a climate-friendly and popular all-rounder. For efficient timber handling Liebherr offers a broad portfolio of powerful and efficient specialist machines, which are ideal for typical operations such as loading and unloading trucks and trailers, sorting logs or transportation. In addition to different machine types and equipment versions, in reality this involves the interaction of powerful engines with an intelligent control system. Whether it is a material handling machine, wheel loader, crawler tractor or telescopic handler: The equipment enables the fast movement and agile manoeuvrability of the machines, as well as the precise and sensitive handling of the raw material, for example during grabbing and sorting. Liebherr manufactures all key components itself – from the diesel engine to the hydraulic system through to the steel

structure – thus guaranteeing the long service life of the components and maximum machine availability even in tough operating conditions. Protective measures for the subsoil and the headlights or mudguards made from hot-dip galvanised steel ensure the necessary robustness. Liebherr also focuses on the efficiency of these specialised machines, continuously optimises the interplay of the drive components and in addition to state-of-the-art diesel engines also offers electric material handlers.

- Material handling machines
- Log loaders
- Wheel loaders
- Crawler tractors
- Telescopic handlers





Material handling machines



Performance

Loading and unloading trucks and trailers, sorting and stacking, as well as holding and transporting all types of timber, are some of the main activities in timber handling companies. Good driving performances, high load capacities, as well as fast working cycles, are required for these tasks. For instance, with the Liebherr timber machines the optimised drive engine impresses with enhanced driving performance and less consumption. But also equipment such as the enclosed slewing mechanism circuit for the Liebherr machines ensures a high torque for maximum acceleration and quick rotary movements, thus providing the basis for efficient material handling operations. Furthermore, the optimal interplay of hydraulics and electronics allows powerful and fast movements during material handling, as well as sensitive and precise work for sorting timber.

Economy

Liebherr relies on state-of-the-art engine technology here with intelligent machine controls that optimise the interplay of the drive components in terms of their degree of efficiency. In addition to diesel-powered machines there are a number of electric drive material handlers in the range which guarantee extremely low operating costs. They are very environmentally friendly, completely emission-free and therefore independent of statutory exhaust emission standards. For conventional machines Liebherr-Power Efficiency (LPE) enables machine operation in the area of the lowest specific energy use. Combined with the innovative Liebherr energy recuperation system, a standard feature on the LH 40 range and above, energy consumption is reduced to a minimum and, at the same time, material handling is significantly increased thanks to faster and more homogeneous operating cycles – for the lowest consumption and greater efficiency at maximum output.

Reliability

Liebherr material handling machines guarantee the necessary stability and with their robust and durable construction ensure smooth operations right across the timber industry. In order to optimally equip the machines for tough timber handling tasks, Liebherr offers a variety of protective devices, such as protection for the headlights, for the travel drive or also for the uppercarriage and the counterweight. Long service life along with maximum machine availability are assured thanks to the in-house production of all key components: diesel engine, hydraulic and electronic components, slew ring, swivel drive and steel structure, developed, tested and produced by Liebherr all at the high level of quality one would expect.

Comfort

The Liebherr cab gives the operators the necessary space to make the best possible use of the machine's capability. Large glass panels, different types of cab elevations and rear and side area monitoring enable the operator an optimum view of the working area and the area around the machine at all times. Thanks to the low sound emissions and the lack of vibrations, the electric handling machines are particularly quiet and increase the working comfort significantly. Additionally, the Comfort driver's seat, the intuitive touchscreen colour display, and central lubrication systems for the machine and its attachments offer the necessary convenience for operators to focus on what is important – the handling capacity.

Maintainability

The service-based machine design guarantees short servicing times, thus minimising maintenance costs. All the maintenance points are easily accessible due to the large, wide-opening service doors. The enhanced service concept places the maintenance points close to each other and reduces their number to a minimum. This means that service work can be completed even more quickly and efficiently.

Log loaders overview

Equipment

- High load capacities and extensive reach due to optimised kinematic properties and robust construction for greater handling performance
- Clever routing of hydraulic hoses optimises the oil flow and minimises power losses for maximum energy efficiency
- Pipe fracture safety valves on hoist and stick cylinders and retract stick shut-off for maximum safety during every application
- Tailor-made Liebherr wood grapple for greater handling performance due to optimum penetration effect and good clamping properties



Cab

- Slewing gear brake comfort for faster and safer work
- Less strain on the operator and reduced environmental pollution due to lower noise emissions
- Simple and safe access due to new, space-saving access system with integrated steps and 10° inclination
- Standard proportional control with 4-way mini joystick for greater precision, high precision control and functions



Uppercarriage

- Greater energy efficiency due to the latest engine technology with intelligent machine control
- Optimal engine output and greater pump flow for fast work cycles, convincing dynamics and maximum handling performance
- Reversible fan and large-meshed cooler as a reliable, sealed unit for high machine availability
- Optimised servicing concept and cleverly designed maintenance access points guarantees minimum machine downtime

Undercarriage

- Optimised hydraulics with closed slewing mechanism circuit for greater energy efficiency and faster work cycles
- Maximum acceleration and higher drawbar pull due to a new travel motor for greater travelling performance
- Mudguards for greater safety due to max. splash protection for cab accesses and standing areas
- Standard four wheel steering setting for high agility and manoeuvrability combined with very good driving stability and improved directional stability

Technical data

		LH 26 Timber Litronic	LH 35 Timber Litronic	LH 50 Timber Litronic	LH 60 Timber Litronic
Variants		M	M	M	M
Reach	m	11	11	11	12
Operating weight*	kg	approx. 23,500–26,000	approx. 28,000–30,200	approx. 38,100–39,900	approx. 42,600–45,500
Engine output	kW / HP	125 / 170 129 / 175 (IIIA (compliant))	150 / 204	170 / 231	200 / 272
Emission stage	Stage	V / Tier 4 Final / IIIA (compliant)	V / Tier 4 Final / IIIA (compliant)	V / Tier 4 Final / IIIA (compliant)	V / Tier 4 Final / IIIA (compliant)
Wood grab capacity	m³	0.80–1.30	1.00–1.90	1.60–3.20	1.60–3.60

M = Mobile

* without attachment



Examples of use



Material handling machines overview

Equipment

- High load capacities and extensive reach due to optimised kinematic properties and robust construction for greater handling performance
- Energy recovery cylinder filled with nitrogen for maximum efficiency through less fuel consumption at more handling capacity from machine class LH 40 Industry
- Pipe fracture safety valves on hoist and stick cylinders and retract stick shut-off for maximum safety during every application
- Quick coupling systems and attachments made by Liebherr for maximum machine capacity utilisation and greater handling performance



Cab

- Joystick steering without steering column to facilitate convenient operation, greater legroom and clear view of the working area
- Less strain on the operator and reduced environmental pollution due to lower noise emissions
- Optimum visibility thanks to large glass surfaces and standard rear and side area monitoring camera
- Standard proportional control with 4-way mini joystick for greater precision, high precision control and functions



Uppercarriage

- Greater energy efficiency due to the latest engine technology with intelligent machine control
- Optimal engine output and greater pump flow for fast work cycles, convincing dynamics and maximum handling performance
- Reversible fan and large-meshed cooler as a reliable, sealed unit for high machine availability
- Optimised servicing concept and cleverly designed maintenance access points guarantees minimum machine downtime

Undercarriage

- Optimised hydraulics with closed slewing mechanism circuit for greater energy efficiency and faster work cycles from machine class LH 30 upwards
- Central lubrication system manual or fully automatic for more productive working time
- Standard load holding valves fitted on all support cylinders for maximum stability in every application
- Less downtime thanks to maintenance free support cylinders

Technical data

		LH 22 Industry Litronic	LH 26 Industry Litronic
Variants		M / C	M / C
Reach	m	11	13
Operating weight*	kg	approx. 19,200–22,200	approx. 24,200–27,900
Engine output	kW / HP	105 / 143	115 (90 ¹⁾ / 157
System performance	kW	–	105 ¹⁾
Emission stage	Stage	V / Tier 4 Final / IIIA (compliant)	V / Tier 4 Final / IIIA (compliant) / electric
Wood grab capacity	m²	0.50–1.30	0.80–1.30

		LH 30 Industry Litronic	LH 35 Industry Litronic
Variants		M / C	M
Reach	m	14	15
Operating weight*	kg	approx. 26,500–30,200	approx. 30,700–31,900
Engine output	kW / HP	140 / 190	140 / 190
System performance	kW	–	–
Emission stage	Stage	V / Tier 4 Final / IIIA (compliant)	V / Tier 4 Final / IIIA (compliant)
Wood grab capacity	m²	1.00–1.90	1.00–1.90

		LH 40 Industry Litronic	LH 40 Port Litronic
Variants		M / C	M / C
Reach	m	16	18
Operating weight*	kg	approx. 36,400–40,900	approx. 41,100–50,300
Engine output	kW / HP	155 (145 ¹⁾ / 211	155 (145 ¹⁾ / 211
System performance	kW	237 / 227 ¹⁾	233 / 223 ¹⁾
Emission stage	Stage	V / Tier 4 Final / IIIA (compliant) / electric	V / Tier 4 Final / IIIA (compliant) / electric
Wood grab capacity	m²	1.00–1.90	1.00–1.90

		LH 50 Industry Litronic	LH 50 Port Litronic
Variants		M / M High Rise / C High Rise	M High Rise / C High Rise
Reach	m	18	19
Operating weight*	kg	approx. 40,000–54,900	approx. 46,000–56,000
Engine output	kW / HP	155 / 211	155 / 211
System performance	kW	269	233
Emission stage	Stage	V / Tier 4 Final / IIIA (compliant)	V / Tier 4 Final / IIIA (compliant)
Wood grab capacity	m²	1.00–3.60	1.00–3.60

M = Mobile
C = Crawler

* without attachment
¹⁾ only with electric

		LH 60 Industry Litronic	LH 60 Port Litronic
Variants		M / M High Rise / C / C High Rise	M / M High Rise / C / C High Rise
Reach	m	20	23
Operating weight*	kg	approx. 52,000–79,800	approx. 59,900–81,300
Engine output	kW / HP	190 (180 ¹⁾ / 258	190 (180 ¹⁾ / 258
System performance	kW	334 / 324 ¹⁾	322 / 312 ¹⁾
Emission stage	Stage	V / Tier 4 Final / IIIA (compliant) / electric	V / Tier 4 Final / IIIA (compliant) / electric
Wood grab capacity	m²	1.60–3.60	1.60–3.60

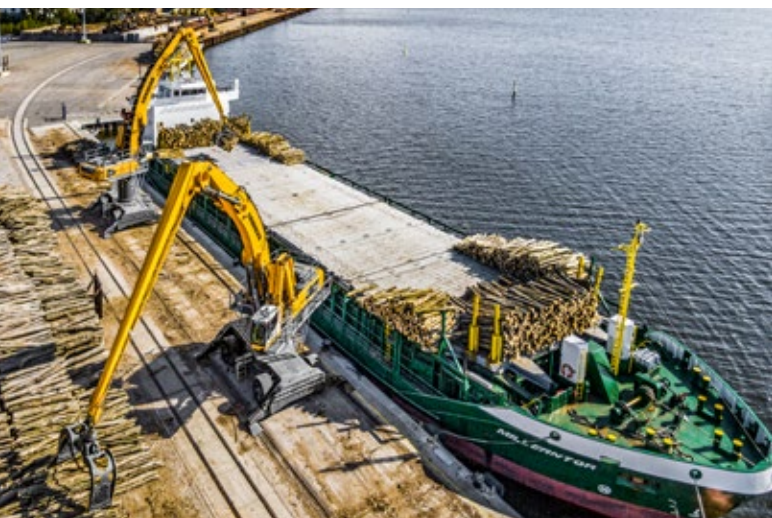
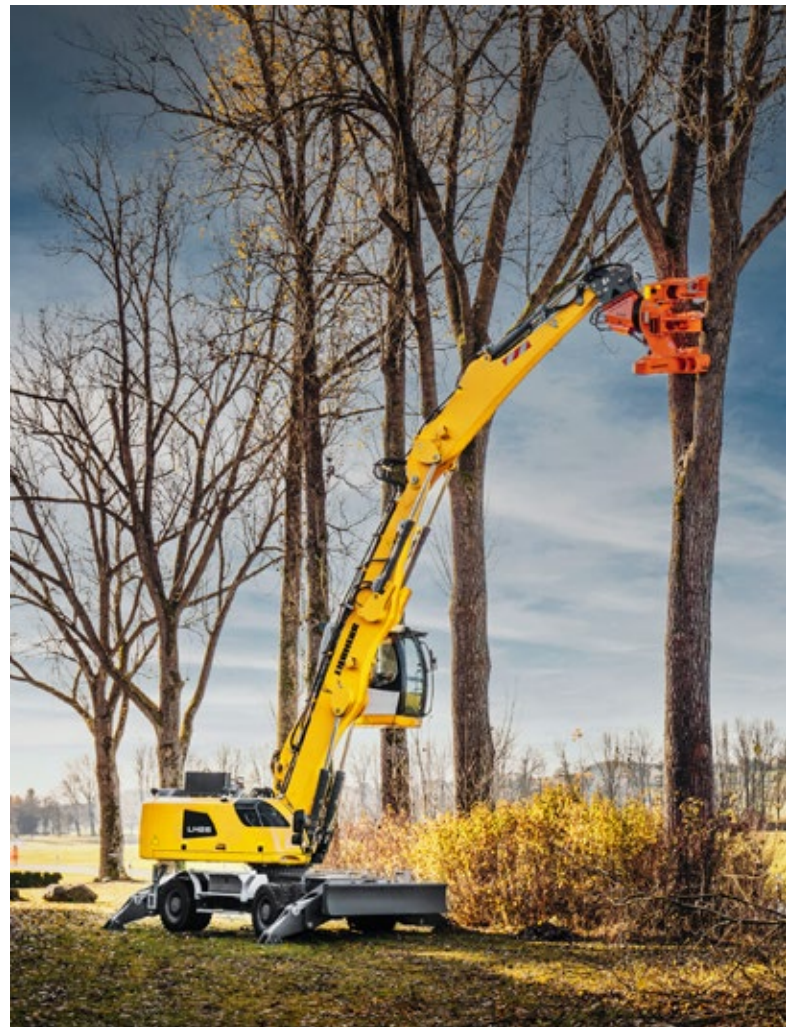
		LH 80 Industry Litronic	LH 80 Port Litronic
Variants		M / M High Rise / C / C High Rise / C Gantry	M / M High Rise / C / C High Rise / C Gantry
Reach	m	22	25
Operating weight*	kg	approx. 66,500–120,500	approx. 75,700–124,700
Engine output	kW / HP	230 (220 ¹⁾ / 313	230 (220 ¹⁾ / 313
System performance	kW	437 / 427 ¹⁾	418 / 408 ¹⁾
Emission stage	Stage	V / Tier 4 Final / IIIA (compliant) / electric	V / Tier 4 Final / IIIA (compliant) / electric
Wood grab capacity	m²	1.60–3.60	1.60–3.60

		LH 110 Industry Litronic	LH 110 Port Litronic
Variants		M / M High Rise / C / C High Rise / C Gantry	M / M High Rise / C / C High Rise / C Gantry
Reach	m	24	27
Operating weight*	kg	approx. 95,000–138,000	approx. 100,000–140,000
Engine output	kW / HP	300 / 408	300 / 408
System performance	kW	492	478
Emission stage	Stage	V / Tier 4 Final / IIIA (compliant) / electric	V / Tier 4 Final / IIIA (compliant) / electric
Wood grab capacity	m²	1.60–3.60	1.60–3.60

		LH 150 Industry Litronic	LH 150 Port Litronic
Variants		M / M High Rise / M Gantry / C / C High Rise / C Gantry	M / M High Rise / M Gantry / C / C High Rise / C Gantry
Reach	m	28	30
Operating weight*	kg	approx. 130,000–185,000	approx. 130,000–185,000
Engine output	kW / HP	400 / 543	400 / 543
System performance	kW	661	614
Emission stage	Stage	V / Tier 4 Final / IIIA (compliant) / electric	V / Tier 4 Final / IIIA (compliant) / electric
Wood grab capacity	m²	1.60–3.60	1.60–3.60

Examples of use





Wheel loaders



Performance

A wide range of products ensures the versatile and universal use of Liebherr wheel loaders in the field of timber work. In addition to the different models, you can choose between industrial and Z-bar kinematics with the L 550 – L 566 XPower wheel loaders and the L 580 XPower. The LogHandler XPower with the specially designed lift arms enables high manipulation heights and extensive reaches. The ideal machine is available for specific tasks such as transporting and loading logs, chippings and small sticks of wood or feeding debarking and sorting machines. Such machine versatility ensures maximum efficiency and productivity.

Economy

The innovative drive concepts of the Liebherr wheel loaders make a fuel reduction possible of up to 30 %. In addition there is minimal tyre wear and hardly any brake wear, at maximum handling capacity and efficiency, thus reducing operating costs and also protecting the environment.

Reliability

Liebherr wheel loaders satisfy Liebherr's exacting standards in even the toughest conditions. They feature many components which are produced in-house and are therefore perfectly tailored to work in synergy. This ensures machine reliability and availability.

Comfort

The modern, ergonomic cab design provides the operator with maximum comfort enabling them to concentrate on their work without fatigue, which once again means more safety and productivity. The Liebherr control lever allows precise and sensitive control of the machine. This ensures accurate and safe handling. The generous glass surfaces of the cab offer excellent all-round visibility thus ensuring maximum safety for people, the machine and the load.

Maintainability

The Liebherr wheel loaders offer excellent service accessibility. All points for daily maintenance can be reached safely and conveniently. A clear benefit which saves time and money!

Wheel loaders L 526 – L 580 XPower overview

Maximum operator comfort for greater productivity

- Automatic central lubrication system *
- Liebherr control lever with mini joystick *
- Joystick steering *
- Operator's cab without steering wheel / steering column – joystick steering only *
- Liebherr weighing system with "Truck Payload Assist" *
- Ride control (L 526 – L 546 * / L 550 – L 580 as standard)
- Stroke limit damping *

Highest level of performance

- Industrial lift arm or Z-bar linkage (L 550 – L 566 and L 580 *)
- High lift arms *
- Solidlink quick hitch *
- Programmable automatic bucket return
- Programmable automatic lift and lowering arm position
- Comprehensive range of special equipment for timber handling *
- Electronic tractive force regulation

Robustness and quality for durable machines

- Tilt cylinder protection *
- Lamp carrier in steel design *
- Guard for headlights *
- Integral tyre pressure monitoring system *
- Special tyres for timber handling *

* optionally available





Productive and safe working

- Soundproof ROPS / FOPS cab
- Windscreen guard *
- Additional working lights, front / rear *
- Adaptive working lighting *
- Roof camera for front area monitoring *
- Skyview 360° *
- Visualisation of the equipment position
- Liebherr key with remote control incl. Coming Home / Leaving Home function (L 550 – L 580 *)

Short service times for greater productivity

- Radiator easy to maintain
- Fluff trap for radiator *
- Large-mesh radiator *
- Reversible fan drive *
- Air pre-cleaner *
- Turbocharger insulation (L 550 – L 580 *)
- Dust protection for alternator *

Productive and safe working

- Anti-slip steps and sturdy handrails
- Rear space monitoring camera via Liebherr display
- Active personnel detection at the rear *
- Reversing obstruction detector *
- Back-up alarm acoustic / visual *

Robustness and quality for durable machines

- Crash protection, rear *
- Crash protection, rear with guard (L 526 – L 546 *)
- Ramming guard with guard (L 550 – L 580 *)
- Chassis protection *
- Widening for mudguard *

Wheel loader L 580 LogHandler XPower overview

Robustness and quality for a durable machine

- Grab can be rotated 360° and swivelled forwards and backwards
- Grapple with hydraulic stop damper horizontally to the driving direction
- Hoist cylinder protection
- Lamp carrier in steel design with additional lights and guard *
- Log pusher hydraulically adjusted with additional deflector plates *
- Integral tyre pressure monitoring system *
- Special tyres for timber handling *

Highest level of performance

- Robust and visually optimised special kinematic for timber handling allows higher stacking and greater ranges
- Various grapple versions and sizes with modular blade *
- Powerful and efficient Liebherr-XPower driveline
- Electronic tractive force regulation
- Maximisation of the timber tongs cross-sections
- Optimised filling behaviour for timber tongs

Maximum operator comfort for greater productivity

- Automatic central lubrication system
- Liebherr control lever, electro-hydraulically controlled, adjustable using Liebherr display
- Joystick steering *
- Operator's cab without steering wheel / steering column – Joystick steering only *
- Stop and stroke limit damping
- Ride control

* optionally available





Productive and safe working

- Soundproof ROPS / FOPS cab
- Windscreen guard mounted on lift arm
- Grapple monitoring with camera on display *
- Headlights LED inside the arm
- Headlights LED on the arm (double design inside and outside; single design on front carriage) *
- Additional headlights at rear of cabin roof *
- Liebherr key with remote control incl. Coming Home / Leaving Home function *

Short service times for greater productivity

- Radiator easy to maintain
- Fluff trap for radiator *
- Large-mesh radiator *
- Reversible fan drive *
- Air pre-cleaner *
- Turbocharger insulation *
- Dust protection for alternator *

Productive and safe working

- Grapple monitoring *
- Anti-slip steps and sturdy handrails
- Rear space monitoring camera via Liebherr display
- Active personnel detection at the rear incl. brake assistant *
- Reversing obstruction detector *
- Back-up alarm acoustic / visual *
- LogHandler special ballast (no water filling of tyres required)

Robustness and quality for a durable machine

- Crash protection, rear *
- Ramming guard with guard *
- Widening for mudguard *

Technical data

		L 507 Stereo	L 509 Stereo	L 514 Stereo
Tipping load	kg	3,240–3,750	3,400–4,430	3,770–5,750
Bucket capacity	m³	0.8–1.6	0.9–2.0	1.3–3.5
Operating weight	kg	5,550–5,835	6,390–6,875	8,860–9,985
Engine output	kW / HP	50 / 68	54 / 73	76 / 103
Emission stage	Stage	V	V	V

		L 518 Stereo	L 526	L 538
Tipping load	kg	3,870–6,550	5,030–8,730	6,220–9,650
Bucket capacity	m³	1.4–4.0	2.0–5.5	2.2–6.5
Wood grab capacity	m²	–	1.3	1.8
Operating weight	kg	9,190–10,445	13,170–14,770	14,520–16,050
Engine output	kW / HP	76 / 103	116 / 158	129 / 175
Emission stage	Stage	V	V	V

		L 546	L 550 XPower	L 556 XPower
Tipping load	kg	7,130–11,010	8,300–12,500	9,300–13,750
Bucket capacity	m³	2.6–7.5	2.6–9.5	2.8–10.0
Wood grab capacity	m²	1.8	1.8–2.4	2.4
Operating weight	kg	15,410–16,970	18,550–20,600	19,600–21,600
Engine output	kW / HP	138 / 188	163 / 222	183 / 249
Emission stage	Stage	V	V	V

		L 566 XPower	L 580 XPower
Tipping load	kg	12,100–15,900	14,800–19,500
Bucket capacity	m³	3.5–12.0	4.5–14.0
Wood grab capacity	m²	3.1	3.5
Operating weight	kg	23,900–26,900	27,650–30,100
Engine output	kW / HP	203 / 276	233 / 317
Emission stage	Stage	V	V

		L 580 LogHandler XPower			L 507 E
Max. payload	kg	8,800–9,000	Tipping load	kg	3,240–3,750
Wood grab capacity	m³	3.4–4.0	Bucket capacity	m³	0.8–1.6
Operating weight	kg	37,400–37,550	Operating weight	kg	5,815–6,195
Engine output	kW / HP	253 / 344	Battery	kWh	32.2 / 64.4
Emission stage	Stage	V	Emission stage		emission-free

Examples of use



Crawler tractors



Performance

The trademarks of the Liebherr crawler tractors are power and innovative technology. The successful balance of operating weight and engine output ensures the maximum level of machine productivity. In various applications, such as paper mills or power plants, the Liebherr crawler tractor exceeds the industry expectations with its superior performance for customers.

Economy

Exceptional dozing power with low fuel consumption are guaranteed by the powerful Liebherr designed diesel engine integrated with the hydrostatic travel drive concept. The crawler tractor is highly cost efficient, since it has the easily accessible service points and an ordering system for spare parts, when needed. These features promote the cost efficiency benefit for customers, while increasing their job productivity.

Reliability

Liebherr crawler tractors are designed to have an extensive service life. A varied range of application specific attachments serve to protect the machine and operator. These components assist in lowering the customer's maintenance time and costs, and to extend the life of the machine.

Comfort

The crawler tractor also allows the operator to have space and comfort during operations. The cab also provides the operator with a comprehensive view of the work area and equipment to ensure safety. The lever system grants the operator full and precise control of the machine. This concept of comfort provides customers the guarantee of productive work operations.

Maintainability

Liebherr crawler tractors have minimal maintenance needs, but integrate easily accessible service areas when needed. The service concept lowers the customer's maintenance time and cost.

Crawler tractors overview

Contamination protection

- Dust filter system supplies the cab with fresh air, filtered multiple times
- Pre-cleaning of engine intake air by an additional separator
- Sealings around engine compartment prevent the contamination of debris into the base machine
- Sealings between base machine and cab prevent dirt from accumulating in cavities and niches and also from entering the cab
- Automatically reversible fan for automatic blowing out of the radiator / engine compartment
- External air flow to alternator ensures that cooling air is always filtered
- Belly pans with openings make it easier for wood shavings that enter the base machine to fall out
- Radiator guard with fine-mesh grille prevents the ingress of wood chips in the radiator compartment



Application attachments

- High-capacity wood chip blade with openings for enhanced visibility



Safety

- Catwalk for comfortable access to diesel filler neck, compartments and oil cooler
- Protective covers on engine hood, cab roof and oil cooler provide protection against falling objects
- Hydraulic oil thermometer to monitor the oil temperature and to warn against the risk of overheating
- Fire extinguisher in the cab (optional installation of an automatic fire-fighting system)
- Fire protection on turbocharger prevents the combustion of wood chips in the engine compartment

Durably designed equipment

- Track shoes with trapezoidal holes reduce material build-up between bushings and sprocket
- Sprocket segments with recesses also help to remove accumulating material

Technical data

		PR 736 Litronic	PR 736 Litronic
Operating weight	kg	21,200–25,500	21,200–25,500
Blade capacity (wood chip blade)	m³	17.6	17.6
Counterweight	kg	1,990	1,990
Engine output	kW / HP	160 / 217	160 / 217
Emission stage	Stage	IIIA (compliant) / Tier 3	V / Tier 4 Final

		PR 746 Litronic	PR 746 Litronic
Operating weight	kg	25,900–31,500	25,900–31,500
Blade capacity (wood chip blade)	m³	20.6	20.6
Counterweight	kg	3,175	3,175
Engine output	kW / HP	190 / 258	190 / 258
Emission stage	Stage	IIIA (compliant) / Tier 3	V / Tier 4 Final

		PR 756 Litronic	PR 756 Litronic
Operating weight	kg	35,400–43,000	35,400–43,000
Blade capacity (wood chip blade)	m³	30.8	30.8
Counterweight	kg	4,000	4,000
Engine output	kW / HP	260 / 353	260 / 353
Emission stage	Stage	IIIA (compliant) / Tier 3	V / Tier 4 Final

		PR 766 Litronic	PR 766 Litronic
Operating weight	kg	53,460–54,333	53,460–54,333
Blade capacity (wood chip blade)	m³	47.4	47.4
Counterweight	kg	4,950	4,950
Engine output	kW / HP	310 / 422	310 / 422
Emission stage	Stage	IIIA (compliant) / Tier 3	V / Tier 4 Final

Examples of use



Telescopic handlers



Performance

The tried-and-tested hydrostatic travel drive with infinitely variable acceleration without shifting gear and good manoeuvrability guarantees quick work processes even in limited spaces. The construction machine can be used universally and is solid from the ground up. It is designed for maximum performance in various applications. High load capacities, intuitive operation and high performance components allow the driver to complete his work quickly and reliably.

Economy

The Liebherr telescopic handlers are all-rounders that make a decisive contribution to the efficiency of your vehicle fleet. Many different optional attachments allow universal use and increased utilisation of the machines. Top performance, low fuel consumption and minimum maintenance guarantee economy throughout the service life of the machine.

Reliability

Robust and reliable: as characterised by Liebherr telescopic handlers. Advanced technology with high-quality materials and build quality guarantee maximum availability. A high level of utilisation and value is guaranteed in the long term.

Comfort

The cab of the telescopic handler from Liebherr is an ideal workplace. It provides an excellent all-around view, has a spacious interior, provides a safe working environment, and its ergonomic controls allow relaxed and productive operation.

Maintainability

At Liebherr, superior service is more than a promise, it is a guarantee to every customer. Several production facilities and an extensive service network for construction equipment means close proximity, and fast response times.

Technical data

		T 38-6	T 32-7	T 33-7	T 38-7
Operating weight with standard fork, without operator	kg	7,420	7,350	7,500	7,540
Max. lift capacity	kg	3,800	3,200	3,300	3,800
Max. lift height	mm	6,225	6,925	6,925	6,925
Overall height ¹	mm	2,474	2,474	2,474	2,474
Overall width over standard tyre ¹	mm	2,327	2,327	2,327	2,327
Wheelbase ¹	mm	2,850	2,850	2,850	2,850
Rear overhang ¹	mm	784	784	784	784
Track gauge ¹	mm	1,920	1,920	1,920	1,920
Outside turning radius over tyres ¹	mm	4,800	4,850	3,950	4,070
Ground clearance (mid of vehicle) ¹	mm	405	405	405	405
Engine output	kW / HP	105 / 143	105 / 143	105 / 143	105 / 143
Emission stage	Stage	IIIA (compliant) / Tier 3 / V	IIIA (compliant) / Tier 3 / V	IIIA (compliant) / Tier 3 / V	IIIA (compliant) / Tier 3 / V

		T 41-7	T 42-7	T 33-10
Operating weight with standard fork, without operator	kg	7,600	7,750	8,100
Max. lift capacity	kg	4,100	4,200	3,300
Max. lift height	mm	6,925	6,925	9,747
Overall height ¹	mm	2,474	2,474	2,474
Overall width over standard tyre ¹	mm	2,327	2,327	2,327
Wheelbase ¹	mm	2,850	2,850	2,850
Rear overhang ¹	mm	784	784	784
Track gauge ¹	mm	1,920	1,920	1,920
Outside turning radius over tyres ¹	mm	4,920	4,050	5,200
Ground clearance (mid of vehicle) ¹	mm	405	405	405
Engine output	kW / HP	105 / 143	105 / 143	105 / 143
Emission stage	Stage	IIIA (compliant) / Tier 3 / V	IIIA (compliant) / Tier 3 / V	IIIA (compliant) / Tier 3 / V

		T 46-7	T 55-7	T 48-8	T 60-9
Operating weight with standard fork, without operator	kg	8,995	10,600	10,600	11,700
Max. lift capacity	kg	4,600	5,500	4,800	6,000
Max. lift height	mm	7,032	7,032	8,043	8,780
Overall height ¹	mm	2,590	2,622	2,622	2,622
Overall width over standard tyre ¹	mm	2,514	2,521	2,521	2,521
Wheelbase ¹	mm	2,950	2,950	2,950	3,150
Rear overhang ¹	mm	977	1,019	1,019	1,217
Track gauge ¹	mm	2,040	2,040	2,040	2,010
Outside turning radius over tyres ¹	mm	3,833	3,902	3,902	4,090
Ground clearance (mid of vehicle) ¹	mm	410	410	410	438
Engine output	kW / HP	105 / 143	115 / 156	115 / 156	115 / 156
Emission stage	Stage	IIIA (compliant) / Tier 3 / V	IIIA (compliant) / Tier 3 / V	IIIA (compliant) / Tier 3 / V	IIIA (compliant) / Tier 3 / V

¹ All specifications with standards tyres, standard fork or standard bucket.

Examples of use



Strong partner – strong service

Our services are perfect for the challenges you face every day



Saving time – for experts who face the challenges themselves

Hand in hand to find the perfect solution.
Do you want to maintain and service your machines yourself?
Do you want to order the spare part you require quickly and flexibly regardless of your location and the time and be certain that you have selected the correct part?

The documentation available online and the spare parts shop in MyLiebherr enable you to access all the information you require with just a few clicks. Use our sophisticated logistics for fast deliveries of the parts you require, all in genuine quality of course. That will enable you to work efficiently. And if you're not sure what to do next, our experts are just a phone call away.

Transparency – your payment professionals have full details of availability, costs and much more at all times

Modular maintenance packages and Reman components to suit your company and budget. Are figures and the information they convey your strong point? Do you want to keep your current investments under review at all times and ideally be able to calculate in advance how much using the machine will cost and know all about its availability values?

Liebherr's modular CarePacks are tailored to your needs to show you in advance precisely what costs you can expect to ensure that your machine will continue to perform at its best in the future. For older machines, our Reman range delivers a smart, low cost solution for you.



For further information, services
and contact details, go to

Reliability and support – for decision-makers and advance planning

You are not just interested in short term success, you want to be successful in the long term. Do you regard success not just as turnover, but also satisfied customers and helping to protect resources?

Our dense service network delivers consistency and a basis for planning, today and in the future.

If necessary, our experts are available for you 24/7. Our genuine parts and service experts able you to ensure that your machines retain their value. Our Reman range and a range of lubricants enable you to be successful at low cost whilst also protecting valuable resources.

Some of our services for you in detail:



A strong partner

The safe feeling of having a strong partner by your side. Our dense service network means that our service experts are always close at hand. It is important to us that you always have a personal contact because when you need assistance, it's good to know that it's always available.



Reman range

The same performance and quality as a new part whilst reducing costs – that is what the replacement parts in our Reman range deliver. A wide range of components is available every day. An ideal solution, particularly for older machines, and at the same time you are helping to protect valuable resources by reusing parts.



Lubricants

Our portfolio of lubricants includes a series of products which enable you to actively help protect resources, including oils with longer change intervals or which are not harmful to the environment. One side-effect of these products is that they can also protect your wallet.



CarePacks

Our modular CarePacks can provide you with tailored packages of services at a fixed charge. That leaves you to concentrate on your work.

Liebherr Connect

The networking of man, machine and environment

Networking in the digital world of Liebherr

Thanks to intelligent machine networking, Liebherr Connect enables access to digital services and comprehensive machine and process data. When using fleet and asset management systems, Liebherr Connect forms an essential basis for any type of component or machine condition monitoring. The solution also enables efficient data exchange and opens up a wide range of possibilities for further developing the machines and adapting them to individual customer requirements.

Liebherr Connect ensures that the machine is connected to the digital world via cloud applications – in almost all of the Group's product segments: earthmoving machines, material handling machines, mining, tower cranes, mobile and crawler cranes, maritime cranes and components. To help customers and partners throughout the entire life of an application, the Group provides the assurance to use all the benefits of modern technology with Liebherr Connect. This, in turn, allows users to optimise their work processes.



Further information on Liebherr Connect
and digital solutions can be found here:



MyLiebherr Portal

MyLiebherr is the portal for construction machines, mining machines, mobile and crawler cranes, maritime cranes, material handling technology, gear technology and automation systems or components.

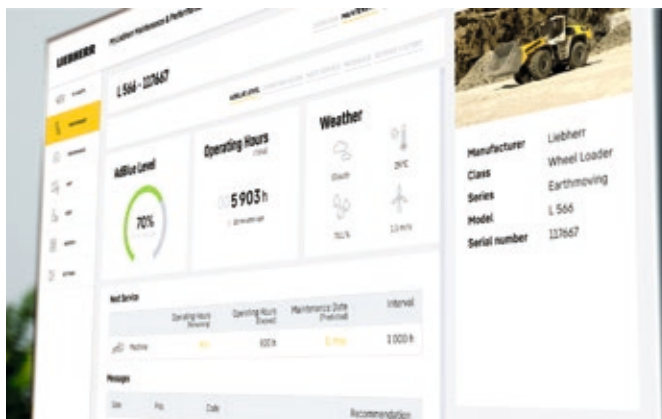
One portal, all services

The customer portal offers comprehensive services, digital services and software solutions for efficient machine utilisation. Once registered, machines can be stored and managed, suitable spare parts can be ordered and licences can be purchased. In addition, a wide range of digital services are available for efficient machine utilisation. The range is constantly being revised and updated.



MyLiebherr Performance

Always be well informed about the performance of your machines and attachments. MyLiebherr Performance is available for earthmoving and material handling machines in MyLiebherr. It enables plant managers in particular to recognise inefficient machine use, save fuel and reduce idle times. In combination with our extensive knowledge as a machine manufacturer, this solution can be used to reduce operating costs by means of optimisation suggestions to make machine deployment more efficient.



MyLiebherr Maintenance

Stay up-to-date about the condition of your machines and attachments. MyLiebherr Maintenance is available for earthmoving and material handling machines in MyLiebherr. This service enables workshop managers to operate their fleet with maximum reliability. A particular advantage is that, in addition to proactive maintenance planning, specific recommendations for action are also provided. Customers benefit from the knowledge of an integrated technology group with expertise ranging from components to the entire machine. In short, MyLiebherr Maintenance helps to reduce or completely avoid unplanned machine downtime and reduce the time required for problem identification, assessment and resolution.

The Liebherr Group



Global and independent: more than 70 years of success

Liebherr was founded in 1949 when, with the development of the world's first mobile tower crane, Hans Liebherr laid the foundations for a family-run company which now has more than 50,000 employees and comprises over 150 companies across every continent. The holding company of the Group is Liebherr-International AG in Bulle, Switzerland, whose shareholders are exclusively members of the Liebherr family.

Technology leadership and pioneering spirit

Liebherr is a pioneer and its forward-looking approach has seen it make important contributions to technology history over a wide variety of industries. Employees throughout the world continue to share the courage of the company founder, sharing a passion to produce innovative products and a determination to provide world-leading equipment and machinery.

Diversified product programme

Liebherr is one of the world's biggest construction machine manufacturers and provides high-quality, user-oriented products and services. Its product programme includes earthmoving machinery, material handling technology, deep foundation machines, mining, mobile and crawler cranes, tower cranes, concrete technology, maritime cranes, aerospace and transportation systems, gear technology and automation systems, refrigerators and freezers, components and hotels.

Customised solutions and maximum customer value

Liebherr solutions are characterised by precision, implementation and longevity. The company is committed to technological excellence and to providing customers with solutions that match their needs exactly. For Liebherr, customer focus does not end with delivery of a product but continues through a comprehensive range of back-up and support services.

www.liebherr.com

Liebherr-Hydraulikbagger GmbH
Liebherrstraße 12
D-88457 Kirchdorf/Iller
Tel. +49 7354 80-0
Fax +49 7354 80-7294
info.lhb@liebherr.com

Liebherr-Werk Bischofshofen GmbH
Postfach 49
A-5500 Bischofshofen
Tel. +43 50809 1-0
Fax +43 50809 11385
info.lbh@liebherr.com

Liebherr-Werk Telfs GmbH
Hans Liebherr-Straße 35
A-6410 Telfs
Tel. +43 50809 6-100
Fax +43 50809 6-7772
lwt.marketing@liebherr.com