

LHM 550

www.liebherr.com

LIEBHERR

Mobile harbour crane

EN



Maximum lifting capacity
154 t



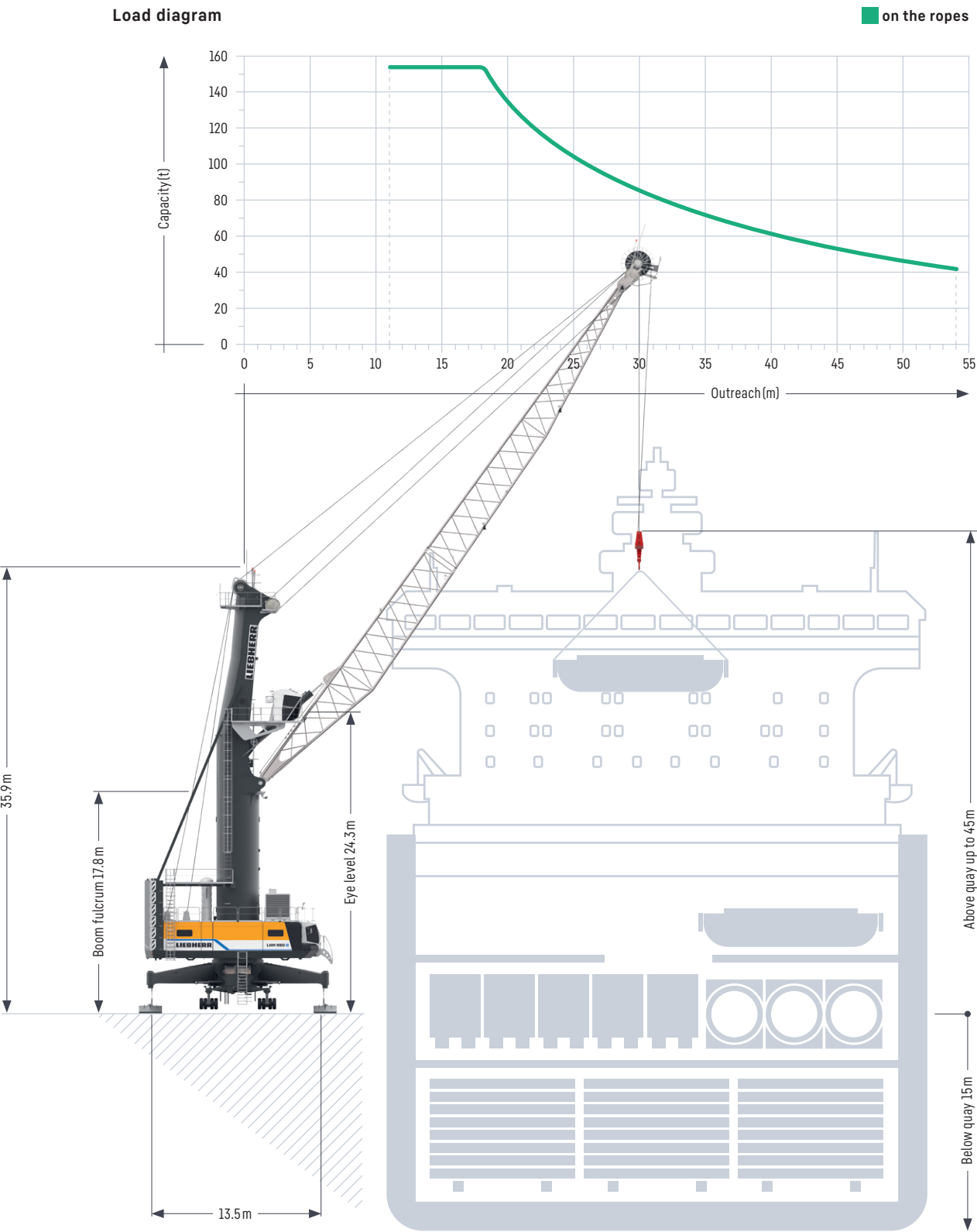
Maximum outreach
54 m



Drive systems
Electric, Unplugged, Hybrid,
Diesel (HVO 100-ready)

Main dimensions

Heavy lift operation



Lifting capacities

Heavy lift operation

Lifting capacity 154 t

Hook operation	
Outreach	On the ropes
(m)	(t)
11	154.0
12	154.0
13	154.0
14	154.0
16	154.0
18	154.0
20	144.9
22	130.5
24	117.9
26	107.2
28	97.7
30	89.2
32	82.3
34	76.0
36	70.7
38	66.0
40	62.0
42	58.4
44	55.2
46	52.2
48	49.3
50	46.4
52	43.6
54	40.9

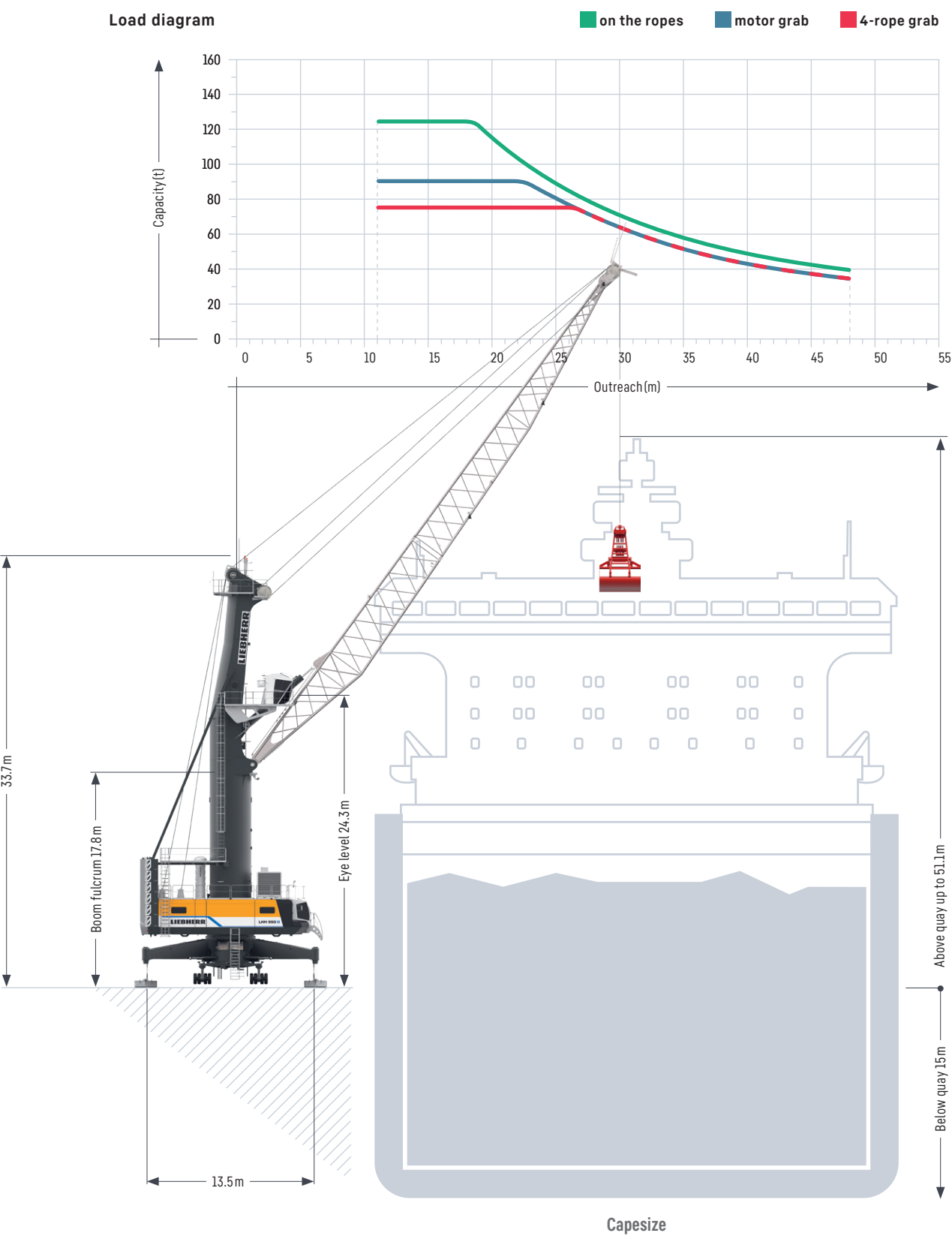
Weight rotator 4.0 t

Project cargo & heavy lift up to 154 tonnes

Safety and precision are the most important criteria when lifting heavy goods.

Main dimensions

Bulk operation



Lifting capacities

Bulk operation

Lifting capacity 124 t

Outreach (m)	Hook operation	Grab operation	
	On the ropes (t)	4-rope grab (t)	Motor grab (t)
11 - 18	124.0	75.0	90.0
19	120.5	75.0	90.0
20	114.5	75.0	90.0
22	103.1	75.0	90.0
23	97.9	75.0	88.1
24	93.1	75.0	83.8
25	88.7	75.0	79.9
26	84.7	75.0	76.2
27	81.0	72.9	72.9
28	77.2	69.5	69.5
29	73.7	66.3	66.3
30	70.5	63.4	63.4
31	67.6	60.9	60.9
32	65.0	58.5	58.5
33	62.5	56.2	56.2
34	60.1	54.1	54.1
36	55.8	50.3	50.3
38	52.2	47.0	47.0
40	49.0	44.1	44.1
42	46.2	41.5	41.5
44	43.6	39.3	39.3
46	41.2	37.1	37.1
48	38.9	35.0	35.0

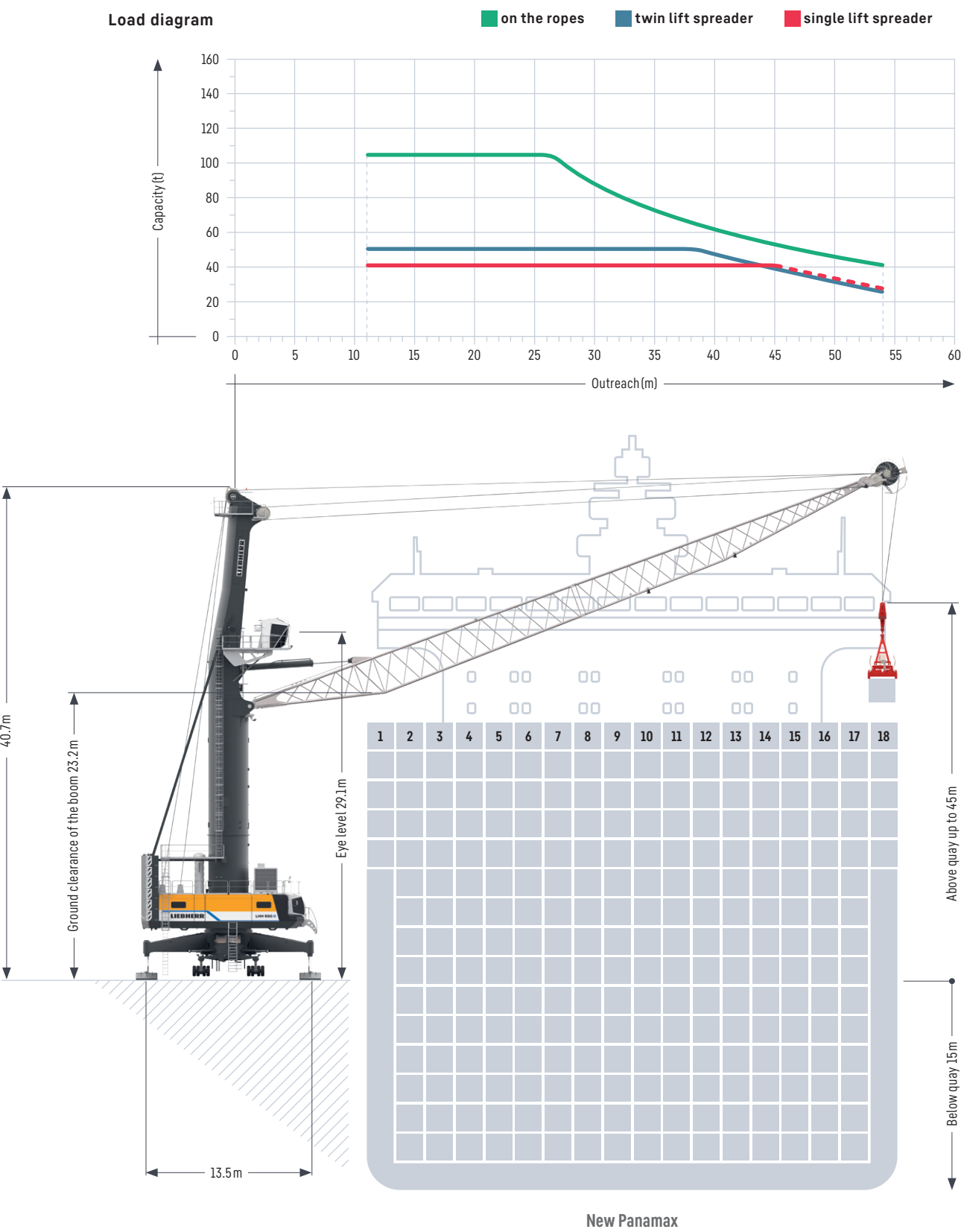
Weight rotator 4.0t

Standard configuration – Turnover up to 1,500 t per hour
Pactronic® – Turnover up to 2,000 t per hour

The powerful hydrostatic transmission and advanced Liebherr electronics ensure short, productive working cycles during bulk handling.

Main dimensions

Container operation



Lifting capacities

Container operation

Lifting capacity 104 t				Lifting capacity 154 t		
Outreach (m)	Spreader operation under		Hook operation on the ropes Heavy lift (t)	Spreader operation under		
	Single lift (t)	Twin lift (t)		Outreach (m)	Single lift (t)	Twin lift (t)
11-13	41.0	50.0	104.0	11-13	41.0	50.0
14	41.0	50.0	104.0	14	41.0	50.0
16	41.0	50.0	104.0	16	41.0	50.0
18	41.0	50.0	104.0	18	41.0	50.0
20	41.0	50.0	104.0	20	41.0	50.0
22	41.0	50.0	104.0	22	41.0	50.0
24	41.0	50.0	104.0	24	41.0	50.0
26	41.0	50.0	104.0	26	41.0	50.0
28	41.0	50.0	97.7	28	41.0	50.0
30	41.0	50.0	89.2	30	41.0	50.0
32	41.0	50.0	82.3	32	41.0	50.0
34	41.0	50.0	76.0	34	41.0	50.0
36	41.0	50.0	70.7	36	41.0	50.0
38	41.0	50.0	66.0	38	41.0	50.0
39	41.0	49.7	63.9	39	41.0	49.2
40	41.0	47.8	62.0	40	41.0	47.3
42	41.0	44.2	58.4	42	41.0	43.7
44	41.0	41.0	55.2	44	41.0	40.5
45	41.0	39.5	53.7	45	40.7	39.0
46	39.7	38.0	52.2	46	39.2	37.5
48	36.8	35.1	49.3	48	36.3	34.6
50	33.9	32.2	46.4	50	33.4	31.7
52	31.1	29.4	43.6	52	30.6	28.9
54	28.4	26.7	40.9	54	27.9	26.2

Weight rotator 3.5t
Weight fully automatic (telescopic) spreader 9t
Weight twin lift spreader 10.7t

Weight rotator 4.0t
Weight fully automatic (telescopic) spreader 9t
Weight twin lift spreader 10.7t

Standard configuration – Turnover up to 32 cycles per hour
Pactronic® – Turnover up to 38 cycles per hour

Precision to perfection: With incredibly short acceleration times for all crane motions, Liebherr is the top performer in container handling.

Technical data

Heavy lift operation

Capacity and classification		
	Capacity	Classification
Heavy lift operation	≤ 77 t	A6
Heavy lift operation	≤ 154 t	A3

Main dimensions	
Min. to max. outreach	11 – 54 m
Height of boom fulcrum	17.8 m
Tower cabin height (eye level)	24.3 m
Overall height (top of tower)	35.9 m
Overall length of undercarriage	20.7 m
Overall width of undercarriage	6.5 m
Number of axle sets (standard)	20
Number of axle sets (optional)	24

Working speeds	
Hoisting / lowering	0 – 120 m/min
Slewing	0 – 1.6 rpm
Luffing (average horizontal speed)	0 – 55 m/min
Travelling	0 – 5 km/h

Bulk operation

Capacity and classification		
	Capacity	Classification
Four rope grab operation	≤ 52 t	A8
Motor grab	≤ 52 t	A8
Four rope grab operation	≤ 63 t	A7

Main dimensions	
Min. to max. outreach	11 – 48 m
Height of boom fulcrum	17.8 m
Tower cabin height (eye level)	24.3 m
Overall height (top of tower)	33.7 m
Overall length of undercarriage	20.7 m
Overall width of undercarriage	6.5 m
Number of axle sets (standard)	18
Number of axle sets (optional)	24

Working speeds	
Hoisting / lowering	0 – 120 m/min
Slewing	0 – 1.6 rpm
Luffing (average horizontal speed)	0 – 55 m/min
Travelling	0 – 5 km/h

Propping arrangements	
Standard supporting base	13.5 m x 13.5 m
Standard pad dimension	4.0 x 5.5 m x 1.8 m
Standard supporting area of pads	9.9 m²
Optional size of supporting pads and bases on request	

Quay load arrangements	
Uniformly distributed load	1.6 t/m²
Max. load per tyre	5.8 t

Due to a unique undercarriage design the quay loads specified above can even be reduced. Pad sizes, supporting base and the number of axle sets can easily be adapted to comply with the most stringent quay load restrictions.

Weight	
Total weight of crane in heavy lift version (154 t winch, 54 m boom, Pactronic®)	approx. 444 t

Hoisting heights	
Above quay at minimum radius	45.0 m
Above quay at maximum radius	31.4 m
Below quay level (approx.)	15.0 m

Propping arrangements	
Standard supporting base	13.5 m x 13.5 m
Standard pad dimension	4.0 x 5.5 m x 1.8 m
Standard supporting area of pads	9.9 m²
Optional size of supporting pads and bases on request	

Quay load arrangements	
Uniformly distributed load	1.7 t/m²
Max. load per tyre	5.8 t

Due to a unique undercarriage design the quay loads specified above can even be reduced. Pad sizes, supporting base and the number of axle sets can easily be adapted to comply with the most stringent quay load restrictions.

Weight	
Total weight of crane in bulk version (124 t winch, 48 m boom, Pactronic®)	approx. 400 t

Hoisting heights	
Above quay at minimum radius	51.1 m
Above quay at maximum radius	29.3 m
Below quay level (approx.)	15.0 m

Container operation

Capacity and classification		
	Capacity	Classification
Container operation	≤ 52 t	A8
Container operation	≤ 63 t	A7
Container operation	≤ 77 t	A6

Main dimensions	
Min. to max. outreach	11 – 54 m
Height of boom fulcrum	22.6 m
Tower cabin height (eye level)	29.1 m
Overall height (top of tower)	40.7 m
Overall length of undercarriage	20.7 m
Overall width of undercarriage	6.5 m
Number of axle sets (standard)	20
Number of axle sets (optional)	24

Working speeds	
Hoisting / lowering	0 – 120 m/min
Slewing	0 – 1.6 rpm
Luffing (average horizontal speed)	0 – 55 m/min
Travelling	0 – 5 km/h

Propping arrangements	
Standard supporting base	13.5 m x 13.5 m
Standard pad dimension	5.5 m x 1.8 m
Standard supporting area of pads	9.9 m²
Optional size of supporting pads and bases on request	

Quay load arrangements	
Uniformly distributed load	1.6 t/m²
Max. load per tyre	5.8 t

Due to a unique undercarriage design the quay loads specified above can even be reduced. Pad sizes, supporting base and the number of axle sets can easily be adapted to comply with the most stringent quay load restrictions.

Weight	
Total weight of crane in container version (154 t winch, 54 m boom, 4.8 m tower extension, Pactronic®)	approx. 454 t

Hoisting heights	
Above quay at minimum radius	45.0 m
Above quay at maximum radius	36.2 m
Below quay level (approx.)	15.0 m

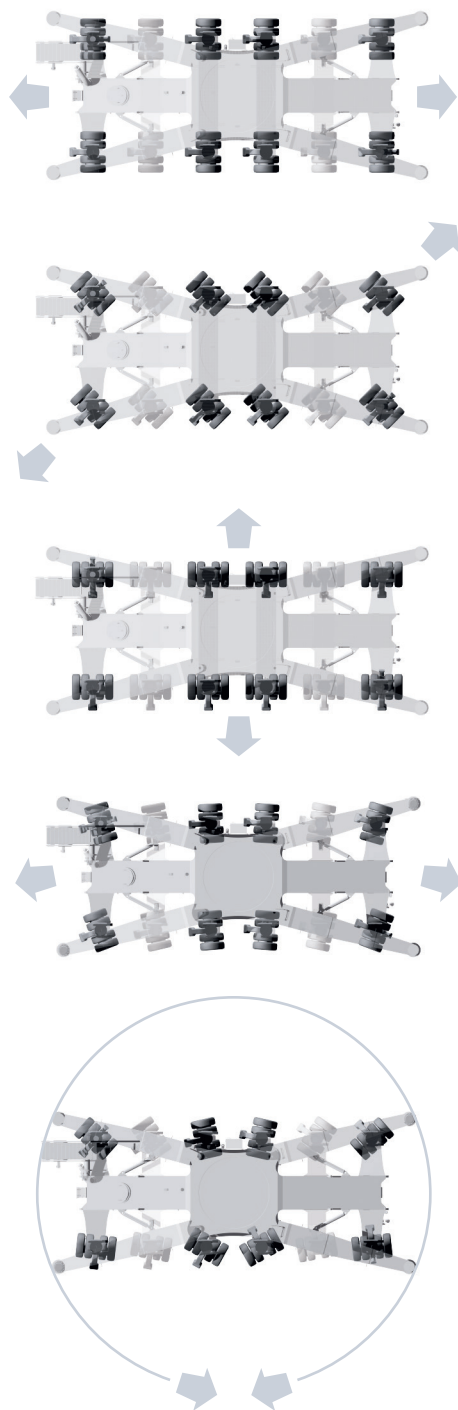
Noise emissions and vibrations	
Emission sound pressure level LPA in the cabin	68 dB(A)
Guaranteed sound power level LWA of the machine	109 dB(A)
Vibrations on upper limbs of the machine operator	< 2.5 m/s²
Vibrations on the entire body of machine operator	< 0.5 m/s²

Undercarriage

Mobility

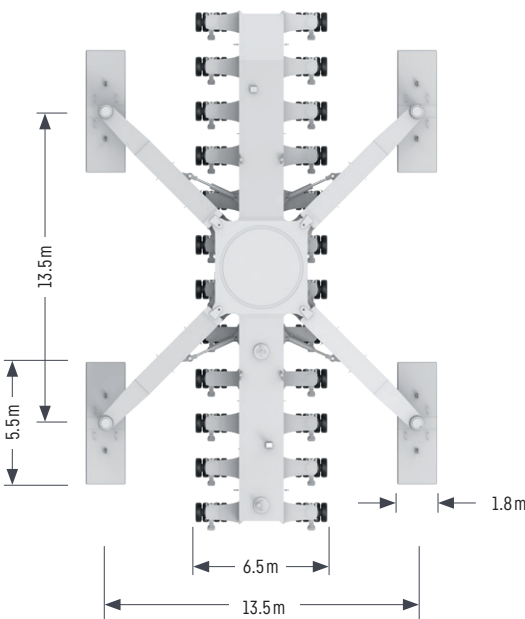
- Outstanding mobility and manoeuvrability
- Curves at any possible radii and even slewing on the spot

Schematic diagram



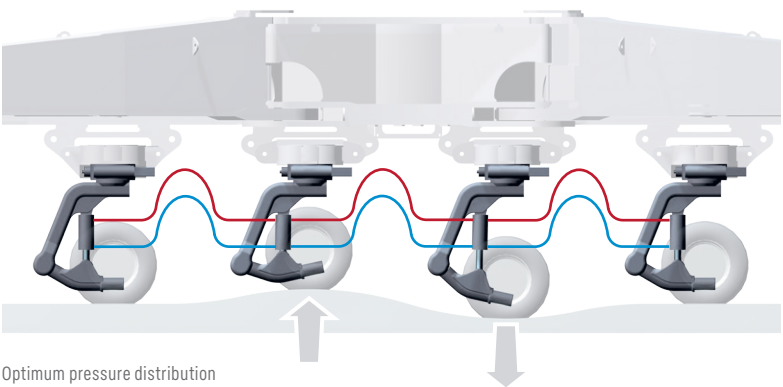
Modular propping system

- Minimised stress and strain of undercarriage due to cruciform support base which directs the load path from boom tip to quay
- Modular system allows further reduction of quay loads by installing additional axle sets
- Easy adaptation to various sizes of support pads and bases



Hydraulic load distribution

- Hydraulic suspension avoids overloading of individual wheel sets
- Standard trailer tyres making requisition of spares economical and time-saving
- Increased lifetime of tyres due to individually steerable wheel sets



Optimum pressure distribution and adaption of wheel sets on uneven surfaces

Optional equipment

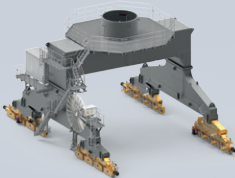
Additional products and services

- Electric drive with high or low voltage connection
- Fully biodegradable hydraulic fluids
- HVO 100 certified drives
- Pactronic® - power by accumulator and electronics
- SmartGrip - intelligent grabbing
- Anti-sway system
- Teach-In - semi-automatic point to point system
- Sycratronic® - synchronizing crane control system
- Vertical Line Finder - diagonal pull preventing system
- Collision alert system
- LiDAT® smartApp
- Economy software - for optimised fuel consumption
- Video monitoring system
- Radio remote control
- Autopropping undercarriage
- Cyclone air-intake system for the engine
- Low temperature package
- Customer-specific painting & logo
- Additional (driven) axle sets
- Axle sets equipped with foamed tyres
- Different supporting bases and pad sizes
- Tower extension - 4.8m
- And many more as per customers' requirements

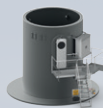
Practical solutions



LPS 550



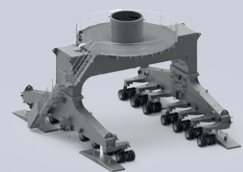
LFS 550



LHM 550



LPM 550



Liebherr develops and produces special designs and solutions to meet customer-specific requirements

The Liebherr Portal Crane (LPS) is an efficient combination of a space-saving portal (mounted on rails) and the proven mobile harbour crane concept. Particularly on narrow quays, individual portal solutions permit (railway) trains and (road) trucks to travel below the portal.

Liebherr Fixed Slewing Cranes (LFS) are an efficient combination of a mobile harbour crane upper carriage and a fixed pedestal. LFS cranes provide an economical and space-saving solution for the installation on quaysides and jetties, especially where room for manoeuvring is limited and low ground pressure is essential. Additionally LFS solutions are also ideally suited for the installation on crane barges.

The Liebherr Portal Mobile Crane (LPM) is the perfect combination of a space-saving portal undercarriage, efficient mobile harbour crane technology and unrestricted mobility. A gantry on rubber tyres enables the crane to be travelled from one quay to another. Supporting pads allow the crane to be used on quays with or without rail tracks.