

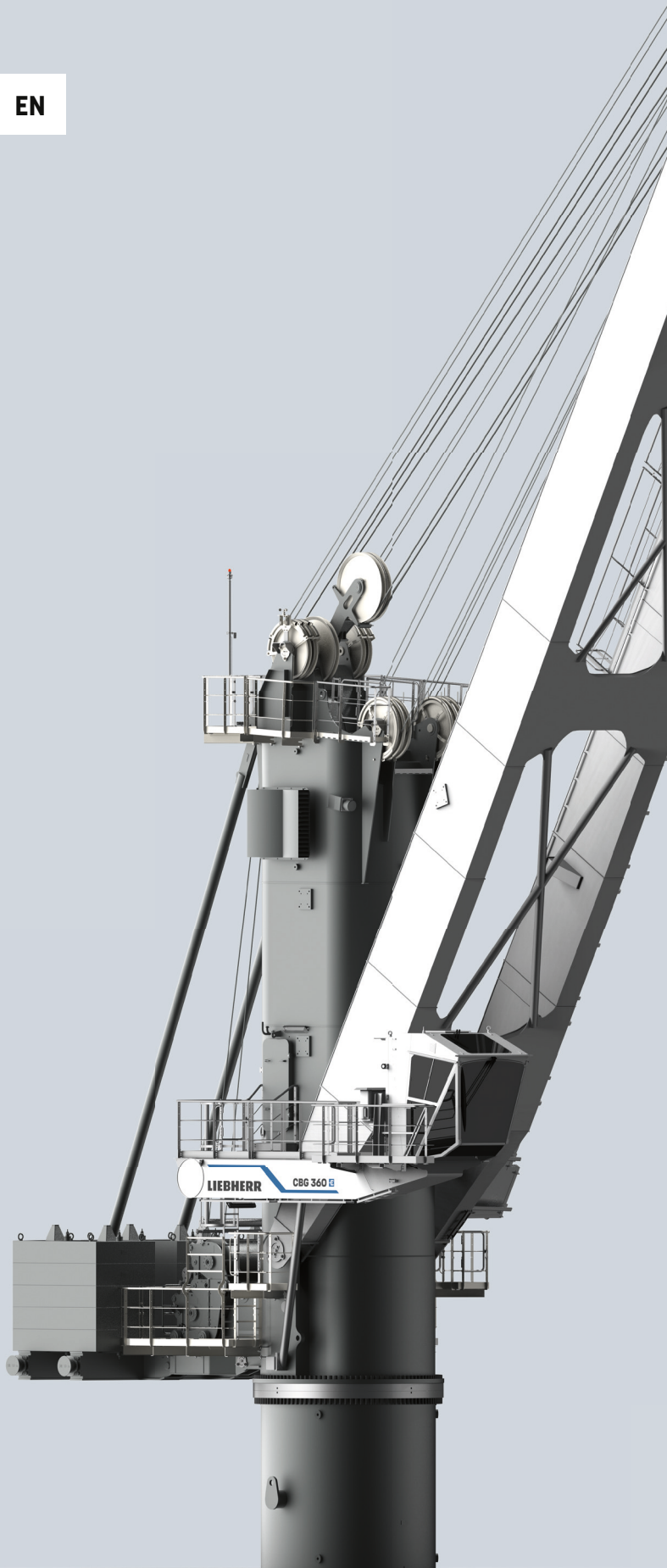
EN

# CBG 360

[www.liebherr.com](http://www.liebherr.com)

## LIEBHERR

Port and transshipment solutions



**Maximum lifting capacity**  
50 t (hook operation)  
45 t (grab operation)



**Maximum outreach**  
36 m

# Technical data

## Speeds

Hoisting/lowering (SWL on rope)	
Maximum hoisting/lowering up to 15t SWL	0m/min - 130m/min
Maximum hoisting/lowering with 30t SWL	0m/min - 71m/min
Maximum hoisting/lowering with 36t SWL	0m/min - 61m/min
Maximum hoisting/lowering with 45t SWL	0m/min - 47m/min
Maximum hoisting/lowering with 50t SWL	0m/min - 42m/min

## Slewing

Speed	0rpm - 1.4rpm
Range	360° unlimited

## Luffing time (12m - 36m)

Maximum luffing time (jib length 36m)	approx. 55sec
---------------------------------------	---------------

## Design conditions

Maximum admissible	
Heel/trim	5°/2° or 2°/5°
Ambient working temperature	-20°C to +45°C
Humidity maximum	93%
Maximum wind speed	
Working condition	20m/sec
Parking condition	63m/sec

## Electric motor

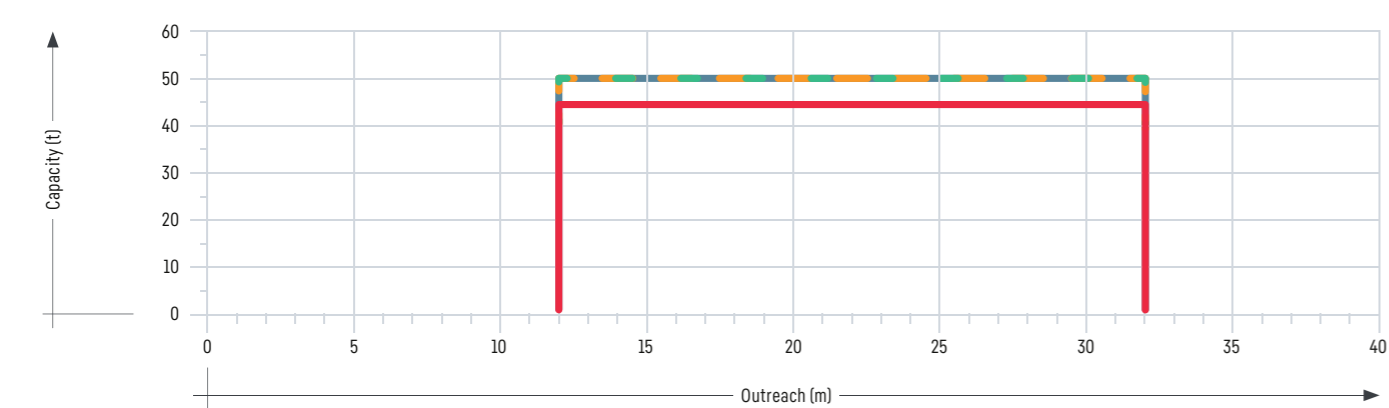
Type of motor	three phase squirrel cage
Class of protection	IP 55
Starting	star delta
Nominal output	295kW (50Hz)/345kW (60Hz)
Main power supply range	400V (50Hz)/440V (60Hz)
Auxiliary power supply	230V, 3ph

## Crane classification

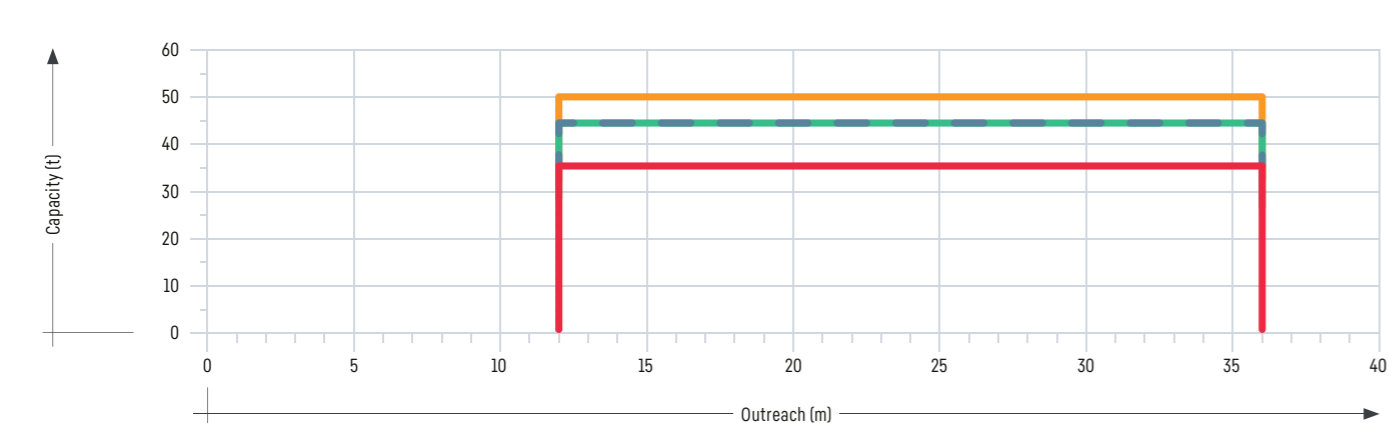
The maximum group classification according to FEM 1.001 (latest edition) relates to full load cycles and is as follows:

	≤ 36t	≤ 45t
The crane as a whole	A8/Q3/U7	A7/Q3/U6

## Load diagram 32m\*

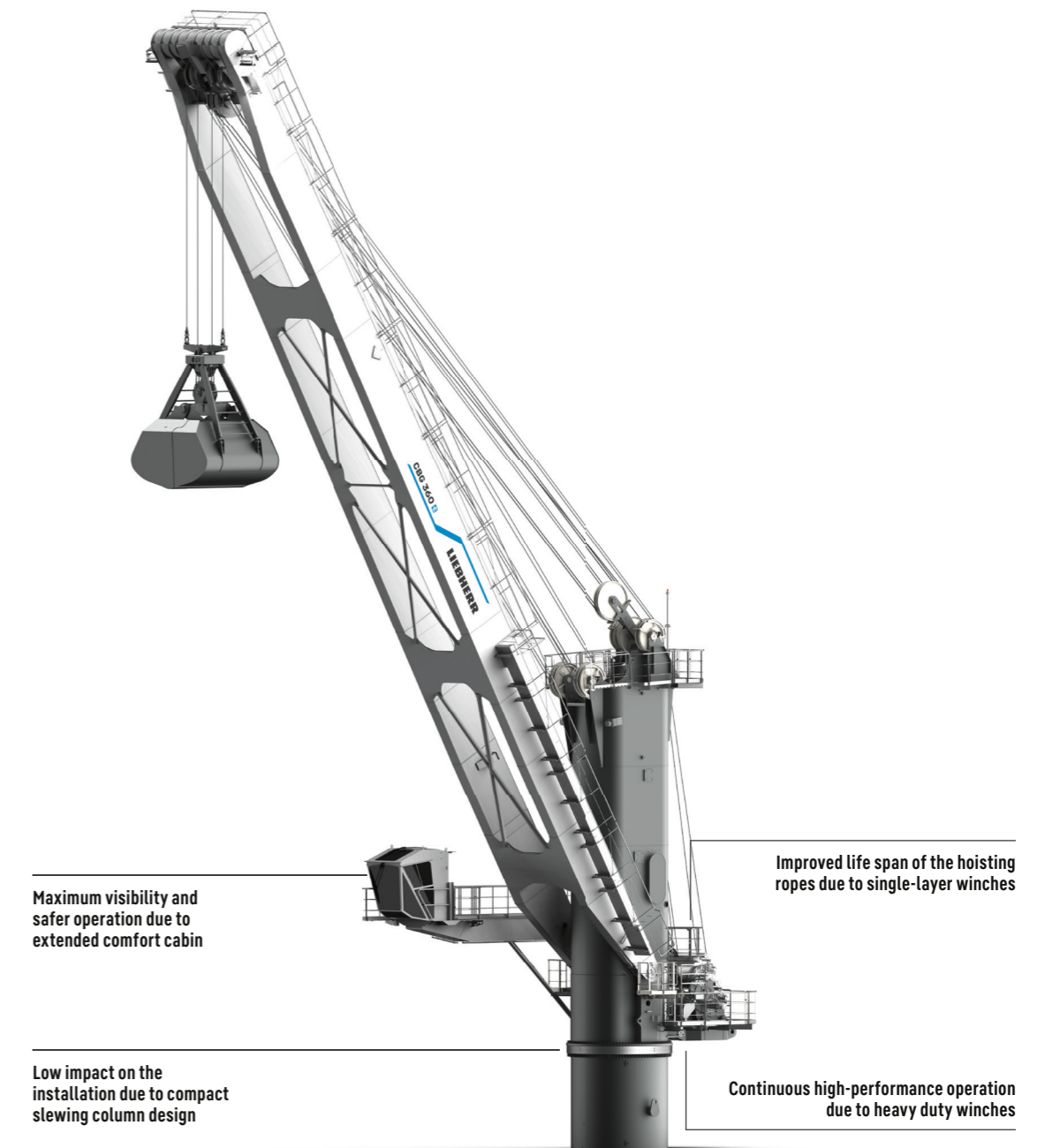


## Load diagram 36m\*



\*Load chart depending on operation conditions and classification societies

# General arrangement

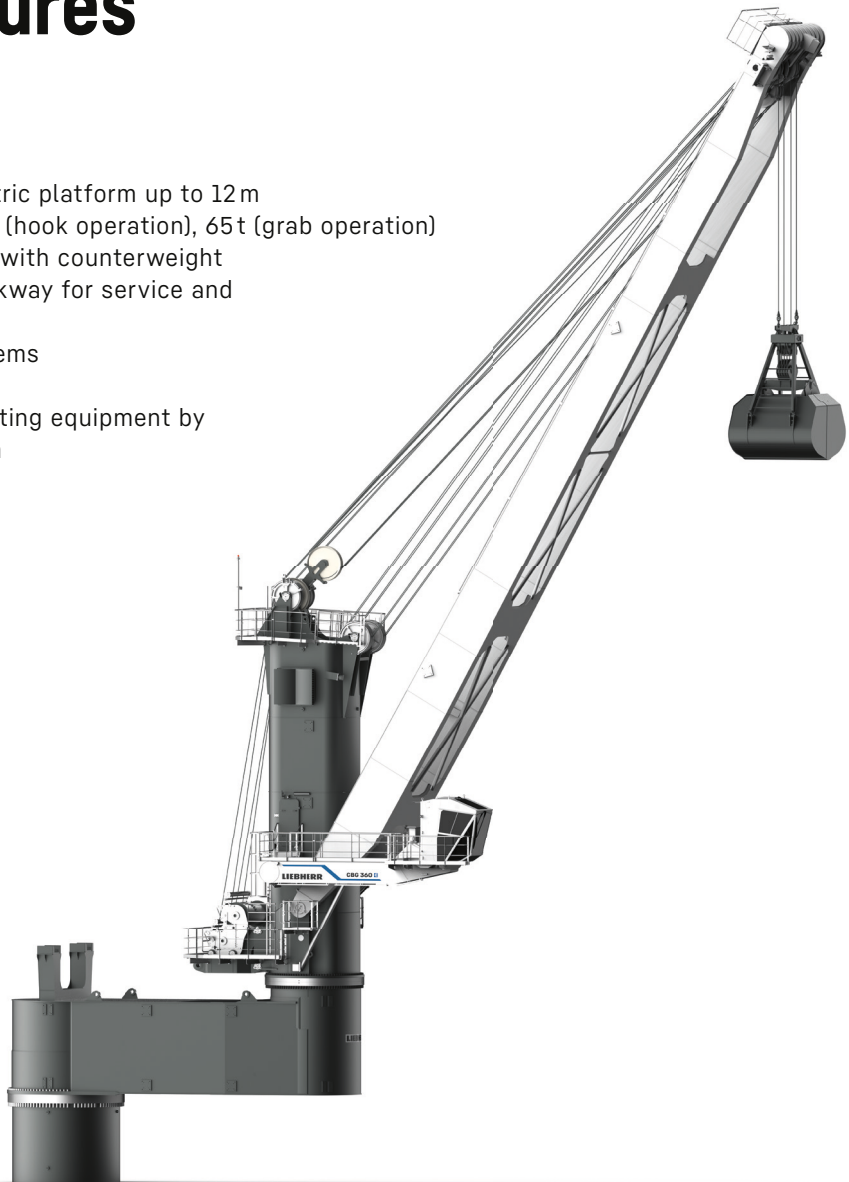


# Advantages

- Speed with empty hook up to 130m/min (<15t)
- Energy-efficient hydraulic system
- Larger and strengthened pulleys for increased life span of wire ropes and reduction of abrasion
- Strengthened ropes with increased lifetime
- Ergonomic driver's seat and control layout
- Turnover performance up to 1,400t per hour in dry bulk handling
- Precise and reliable crane control system Litronic - made by Liebherr

# Optional features

- Extended working radius via eccentric platform up to 12m
- Heavy-lift winch configuration: 80 t (hook operation), 65 t (grab operation)
- Increased stability and load charts with counterweight
- Additional platforms and boom walkway for service and maintenance purposes
- Intelligent automatic greasing systems
- Complementary service devices
- Operational flexibility for special lifting equipment by installation of electrical cable drum



## SmartGrip®

The SmartGrip technology is capable of optimising the filling rate of the grab in a self-learning manner. In this way, SmartGrip learns after only a few lifting cycles how to maximise capacity utilisation of the grab even for less experienced crane operators.

## LiCAS

Liebherr cranes can be equipped with the Liebherr Collision Alert System (LiCAS). This additional assistance system sets new levels in operational safety between other Liebherr cranes during heavy-duty cargo handling. LiCAS supports the crane driver by permanently detecting the distances and warns of potential unsafe conditions.

## LiDAT smartApp

With LiDAT smartApp, it is possible to analyse your crane (operating and performance) data and get answers from it almost immediately. That leads to direct decisions. The ability to work faster gives operators a competitive edge they did not have before. The data analytics helps to detect bottlenecks and to identify new opportunities.

## LiSIM®

Liebherr simulator increases port safety and productivity by providing a cost-effective and highly efficient crane operator training solution. The development of this sophisticated training tool was prompted by Liebherr's extensive experience in crane operator training. Based on the original Litronic crane control system, LiSIM is the only realistic virtual solution available on the market for the training of the precise and innovative control system of Liebherr cranes.