
Professional use Food Service 2025

Food Service and Beverages

LIEBHERR

Refrigeration and freezing





The highest level of precision and reliability

The new generation of appliances
from the specialist for professional
cooling solutions for commercial use.

Whether you're in catering, the hotel industry, or food retail; cooling beverages, ensuring the correct temperature of wine, freezing ice cream, or preserving sensitive ingredients – Liebherr has the perfect cooling solution for you. From bakeries and industrial kitchens to sales areas and behind the counter, our range meets all your professional needs.

As a specialist in commercial cooling and freezing, we offer you an extensive portfolio of innovative, sustainable, and energy-efficient professional appliances. Their extremely reliable and precise refrigeration performance promotes your professional excellence and ensures the storage safety and freshness of your food.

As well as unique quality, the timeless design and high level of operating convenience reflect our many years of experience in manufacturing professional fridges and freezers. See for yourself.

Contents

The Liebherr Group	6
Brand and quality	8
Sustainability	10
Systems expertise	12
Durability and economic efficiency	14
Cooling performance and temperature stability	15
Security and alarms	16
Hygiene and ease of cleaning	17
Handling and equipment	18
Series	19

If the masculine form is used in the wording, it is solely for the sake of readability and without any intention to discriminate. It is meant here as a gender-neutral term and refers to all gender identities.

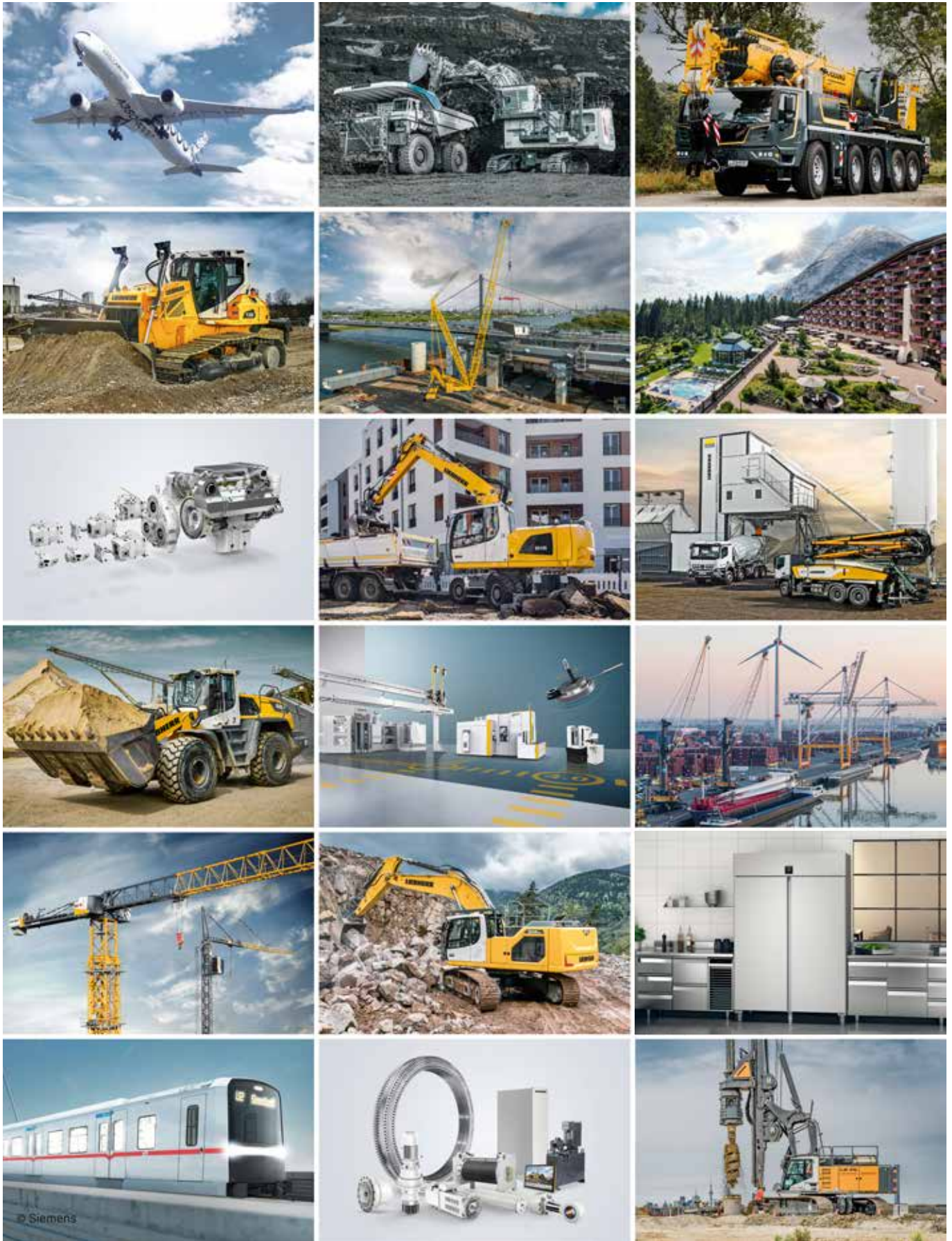
Hotels, gastronomy and butchers	20
Series	22
Refrigerators and freezers GN 2/1 with dynamic cooling, with stainless steel interior and exterior	24
Counter fridges and freezers with dynamic cooling, interior and exterior made of stainless-steel	34
Refrigerators and freezers with plastic inner liner and dynamic cooling	40
Under-worktop freezers	52
Accessories	56



Beverages	60
Series	66
Display fridges with dynamic cooling	68
Fridges with dynamic cooling	74



The Liebherr Group



The Liebherr Group

Liebherr-Hausgeraete GmbH

For seven decades, Liebherr-Hausgeraete GmbH has been specialising in the manufacture of innovative refrigerators and freezers. The company employs more than 6,800 staff worldwide and develops and produces a wide range of refrigerators and freezers for domestic and professional use. Thanks to their freshness technologies and high-quality materials, the consumer appliances of the premium manufacturer impress with their energy efficiency, elegant design and long service life. In professional use, refrigerators and freezers from Liebherr stand for maximum safety with intelligent features and exceptional quality. With an annual production of around 2 million appliances, Liebherr-Hausgeraete is one of the leading European manufacturers in the premium class, combining quality, design, and innovation.

Global and independent: The Liebherr Group, more than 75 years of success

Liebherr was founded in 1949 when, with the development of the world's first mobile tower crane, Hans Liebherr laid the foundations for a family-run company which now has more than 50,000 employees and comprises over 150 companies across every continent. The holding company of the Group is Liebherr-International AG in Bulle, Switzerland, whose shareholders are exclusively members of the Liebherr family.

Technology leadership and pioneering spirit

Liebherr is a pioneer and its forward-looking approach has seen it make important contributions to technology history over a wide variety of industries. Employees throughout the world continue to share the courage of the company founder, sharing a passion to produce innovative products and a determination to provide world-leading equipment and machinery.



Diversified product programme

Liebherr is one of the world's biggest construction machine manufacturers and provides high-quality, user-oriented products and services. Its product programme includes earthmoving machinery, material handling technology, deep foundation machines, mining, mobile and crawler cranes, tower cranes, concrete technology, maritime cranes, aerospace and transportation systems, gear technology and automation systems, refrigerators and freezers, components and hotels.

Customised solutions and maximum customer value

Liebherr solutions are characterised by precision, implementation and longevity. The company is committed to technological excellence and to providing customers with solutions that match their needs exactly. For Liebherr, customer focus does not end with delivery of a product but continues through a comprehensive range of back-up and support services.



Top performer for your trade

Those who want perfection, choose perfection. Specially developed for the food and beverage sector, our professional refrigerators and freezers fulfil the highest expectations with an extra portion of robustness, cost efficiency and ease of cleaning. Even at ambient temperatures of up to +43 °C and many door opening cycles, food and beverages are reliably and safely stored, while also being optimally and attractively presented.



The Liebherr factor:

Professional refrigerators and freezers

- Specially developed for the food and beverage sector
- Secure, food-safe storage
- Perfect presentation of goods
- Top quality thanks to elaborate test procedures

Tested down to the finest detail. And more.

From conception and development to production and marketing, at Liebherr, we Liebherr we do everything we can to offer top-quality, innovative products. As early as the development stage we test all the mechanical, electronic and refrigeration components for reliable operation. Before we approve a door hinge, for example, it must undergo at least 100,000 opening cycles. You can depend on it. Your Liebherr appliance will be the professional partner at your side – 24 hours a day, 365 days a year.

Complete responsibility

Responsible use of our resources is our objective and continuous improvement throughout the product lifecycle is our long-term aim. This is why we continually develop more environmentally friendly methods for manufacturing more sustainable products – with the familiar Liebherr quality. As well as high energy efficiency, we put a special focus on durability and ensuring that spare parts are available for a long time.

Conscientiously developed

We take every aspect of sustainability into account when designing our products. Our product responsibility begins during the development of the appliances and continues with the careful organisation of our production and supply chains. This means that the correct choice of materials with regard to recycling as well as minimising the use of energy during production are important factors. During the use phase our almost maintenance-free appliances are characterised by very low energy consumption and low operating costs.

Our path to the future

- recyclable product design
- materials able to be separated
- reuse of materials

- maximum energy efficiency
- maximum durability
- simple repair
- optimal storage conditions



- more renewable materials
- more recycled materials
- fewer environmentally harmful raw materials

- lower energy consumption
- more renewable energies
- less waste

Naturally refrigerated

We were the first to convert our complete range of refrigerators to CFC-free refrigerants and blowing agents. We now only use the natural refrigerants R600a and R290. These are specially designed for highly efficient compressors and also result in lower energy consumption and electricity costs.



High efficiency: This is how economical a Liebherr can be.

You can find out how efficient our appliances are using the online tool from the EU-financed projects Label2020 and BELT. At this site you can view and compare the electricity consumption and plenty of other product data for electrical appliances. The calculator also takes account of local electricity prices and shows the costs for the entire period of use. The comparison shows that a Liebherr is worth it!

Efficiency check: tool.label2020.eu

Responsibly manufactured

We handle resources responsibly and use renewable energies in the production of all of our appliances. We recycle the energy released during production, for example, to heat buildings. We also purify the water after the manufacturing process to make sure that it is free of pollutants. In addition, we are continuously reducing our waste volume by consistently separating waste and recycling production materials wherever possible.



Europe-wide certification

All our European production sites are certified according to the international standards for quality management (ISO 9001), environmental management (ISO 14001) and energy management (ISO 50001).

The Liebherr factor:

Environmentally conscious development and production:

- Appliances with very low energy consumption
- Natural refrigerant
- Resource-saving manufacturing processes
- European sites fully certified



Choose refrigeration and freezing from the professionals

Whether for catering, bakery or food retail, for beverages, frozen food or ice cream: If you wish to fulfil the expectations of your customers and guests regarding freshness and quality, you need cooling technology that fulfils the highest requirements. With specially developed professional appliances, we offer our commercial customers first-class solutions for a demanding working day – and strong arguments for choosing the system specialist.

Excellent performance has its reasons. We have five.

Liebherr's top performance is based on five pillars:



Durability and economic efficiency

Our refrigerators and freezers stand out with their high efficiency and very low energy and overall operational costs. Robust materials, high-quality cooling components and quality processing guarantee a long lifetime. The outstanding TCO (Total Cost of Ownership) is also down to the easy care and, not least, the fact that the appliances need little to no maintenance.



Cooling performance and temperature stability

Perfect cooling power, you can rely on the high temperature constancy of our professional appliances, even up to +43 C. Even opening the doors frequently will have no effect on your goods. The ultra-modern components, high-performance and environmentally friendly coolants, and precise controls are so tightly coordinated that the quality and freshness of the products are always guaranteed, without compromising the economic efficiency of the appliances.



Security and alarms

Numerous security functions in our professional appliances ensure that your food are always correctly cooled and there is no loss of quality. For example, various alarm systems immediately warn you of temperature fluctuations, while door locks provide protection against unauthorised access.



Hygiene and ease of cleaning

Uncompromising hygiene is essential when storing food. That's why our appliances are particularly easy to clean. For example, they are equipped with seamless inner liners which can be easily and thoroughly wiped down. The fronts, drawers and grid shelves, too, are always designed to be easy to clean.



Handling and equipment

During a hectic working day, everything has to run smoothly. Thanks to well-conceived details, intelligent functions and excellent material quality, our professional appliances offer you maximum ease of operation, ensuring hassle-free work.

Efficient through and through

A Liebherr professional appliance pays off even more in times of rising electricity prices and extreme variations in demand: its high-quality components, the perfect cooling performance and low energy consumption ensure an optimal TCO (Total Cost of Ownership).



Long-term satisfaction: outstanding service life

Liebherr appliances are designed for a service cycle of 15 years. Extremely robustly manufactured, they continually withstand demands of daily use. This is quality that pays off – for many years to come.

Original Liebherr: 15 years of spare parts availability

Liebherr-Hausgeräte GmbH is taking the service life of its high-quality appliances one step further for its customers: Spare parts availability will be extended to 15 years from the end of production of the respective model. This applies to all functional parts and storable parts of the equipment. Liebherr-Hausgeräte also guarantees this service retroactively for all appliances produced since 1 January 2021.

Good for people and the environment: ultra-efficiency

Energy-efficient refrigerators and freezers help with ever increasing electricity prices. Liebherr fully utilises the savings potential of every component – from the compressor to the seal, to the lighting and electronics. The ultra-efficient appliances in the Perfection series for example demonstrate how this has a positive effect on your overall operating costs.

Saves costs, time and aggravation Maintenance-free

Liebherr's professional freestanding appliances operate without filters or other components and parts that require regular replacement. There are no additional cleaning requirements.

Wire tube condenser

Our durable wire tube condensers prevent dirt deposits, require no maintenance and ensure excellent refrigeration performance and efficiency for many years. They reduce the operating costs of your refrigerator.

Consistent refrigeration performance, constant temperature

Liebherr appliances offer optimum reliability for refrigeration and freezing: food is chilled quickly and gently, reducing temperature fluctuations to a minimum. This keeps your goods fresh for as long as possible.

Constantly cool in accordance with DIN EN 16825:2015

Groceries retail their quality only if temperature fluctuations are minimal. Liebherr refrigerators have an impressively stable temperature ranging between -1°C and 5°C . This not only maintains the storage climate, but also the value of your goods and ingredients.

Constantly frozen in accordance with DIN EN 16825:2015

Sensitive foodstuffs cannot be subjected to large deviations from the set storage temperature. Liebherr freezers guarantee a stable temperature between -15°C and -18°C . This allows you to keep food for longer and preserves the quality of your frozen goods.

Cooled in a flash with SuperCool

For an optimal temperature, even for market purchases warmed by the sun: Once you activate SuperCool, your Liebherr boosts its performance until the fresh food is as cool as the rest of the contents. SuperCool then switches off automatically – after a maximum of 12 hours.

No more defrosting thanks to NoFrost

NoFrost technology gives surface ice no chance. Any moisture that occurs is combated by the fan-assisted cooling, and cyclical defrosting phases remove even the last moisture particles out of the interior. For convenient, safe, and ice-free storage.



Frozen in a flash with SuperFrost

The automatic SuperFrost function quickly reduces the temperature in your professional freezer to the coldest level, creating cold reserves for vitamin-preserving freezing. As soon as the freezing process is complete, or after max. 65 hours, SuperFrost switches back to normal operation, preventing unnecessary energy consumption.

Ideal humidity with HumidityControl

The perfect climate conditions can only be created with the correct combination of temperature and humidity. With HumidityControl, you can adjust the humidity to the requirements of your stored food in three stages, ensuring extra-long freshness.

Safety as standard

Anyone who sells food must have reliable protection for the goods: from interruptions to the cooling process and temperature fluctuations, to unauthorised access. Both of these are easy to prevent using our professional refrigerators and freezers.

LightAlarm: Light on, door closed

In case of an uncontrolled temperature rise, if a door has been left open or there were any other problems, the interior light of the appliance will start flashing. In the case of glass-door appliances, this quickly reveals where action is needed. In the case of solid-door appliances, the flashing interior warns to close the door immediately, in order to preserve the storage quality.



Power failure info: find out what happened

If the power supply has been interrupted due to a fault, the power failure info appears when the power is restored. This reports that the appliance was temporarily without power and the maximum temperature that was reached during this time. This allows you to assess whether a loss of quality is likely.

Mechanical key lock: the key to complete control

All professional Liebherr appliances for bakeries and the catering industry are equipped with a mechanical lock with two keys. This way you can be sure that no unauthorised hands can access your stored goods.

Electronic lock: on the safe side

All Liebherr appliances can be locked and unlocked with an electronic lock using an individual PIN code. This allows any number of users to lock and unlock the appliance via the user interface without having to share a key.



Built-in cleanliness

Perfect hygiene plays an important role in professional food handling. Our professional appliances therefore have features which reduce dirt from the start and make cleaning much easier.

Floor drainage for fast cleaning

High levels of hygiene made easy: The integrated floor drainage in Liebherr's catering appliances enables convenient cleaning in small spaces. Water simply drains away and your appliance is quickly clean again.



Food-safe interior for unpackaged food

All materials in Liebherr appliances for bakeries and the catering industry are food-safe and suitable for storing unpackaged foods.

Seamless interior to prevent dirt

The plastic inside container is made of polystyrene: a fully recyclable, robust, and odourless plastic. Manufactured seamlessly from one piece, it has no hidden dirt traps and the large corners can be cleaned quickly and easily. The perfect combination of sustainability and hygiene.



Simply uncomplicated

When working with food, things are often hectic. That's why our professional refrigerators and freezers are equipped with a lot of features and clever details to make your everyday life easier.



Open for convenience: 90° door stopper

If the door is opened beyond 90°, it remains open on its own. This gives you enough room for manoeuvre to fill the appliance with both hands, sort or remove goods. This also makes cleaning easier. Under 90°, the door closes automatically to keep the temperature stable and retain the quality of the stored goods.

Just in case: pull-out stop

The pull-out stop in the middle of the grid shelf makes sure your goods are stored securely: The grid shelf cannot be pulled out by mistake – even if things start to get a little hectic. When stocking or emptying the appliance, it remains reliably fixed in position – and you are spared any mishaps, large or small.

Foot pedal

Even when you haven't got a hand free, you can conveniently open the appliance using the optional foot pedal. Especially in professional settings, this feature makes it significantly easier to use refrigerators and freezers as you can easily open the door when your hands are full without having to waste time.

Effort-saving: ergonomic slimline handle

Save your energy for more important things: The door handle is designed for frequent use. It is ergonomic and easy to grip with either hand, and it is very easy to clean.

Convenience at your fingertips: intuitive menu navigation

Check the appliance status from the control panel integrated flush in the door without needing to open door. The menu guidance is self-explanatory and is controlled by three touch buttons or by Touch & Swipe.

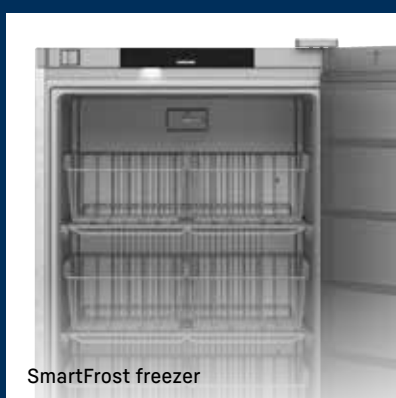


Performance series

Our Performance series concentrates on the essentials: Appliances in this class meet all the requirements for safe, temperature-stable storage. All Performance appliances are made of white steel, are available as solid door models, and are equipped with the SmartFrost function in the freezer variant.



Energy-efficient



SmartFrost freezer



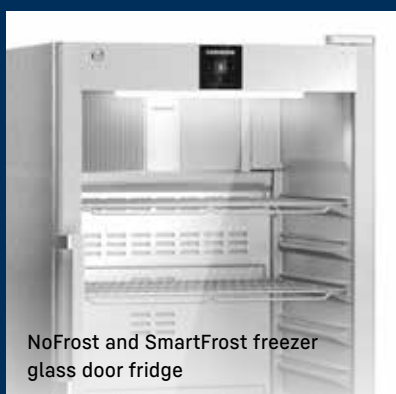
HumidityControl

Perfection series

Perfection series appliances offer everything to meet the highest standards and requirements of professional everyday use. They are made of stainless steel, are available with either solid or glass doors, and feature optimal lighting. Their cooling range spans from -2 °C to +15 °C; the freezers include both the SmartFrost and the NoFrost functions.



Lighting



NoFrost and SmartFrost freezer
glass door fridge



Stainless steel housing



Refrigerators and freezers for the hotel and catering industries – recommended by professionals for professionals

High temperatures, tight spaces, lots of bustle – in professional kitchens, refrigerators and freezers have to endure a lot while always providing full capacity. This is exactly why Liebherr developed its portfolio for the hotel and catering industries. The appliances reliably store food even at ambient temperatures up to +40 °C with a constant cooling power. They are enormously robust, long-lasting, easy to clean and particularly sustainable, not only thanks to natural refrigerant. At the same time, they fulfil applicable directives, standards and norms, including in terms of hygiene, HACCP and GN containers. The efficient cooling system not only ensures low energy and overall operating costs but also provides the reassurance that your products are safely stored. You can rely on this – because, after all, it is also our claim to be perfect from the first to the last course.

Refrigerators and freezers

Refrigerators and freezers with stainless steel inner liner



Performance series



Perfection series

Refrigerators and freezers with plastic inner liner



Performance series



Perfection series

Refrigerators and freezers with stainless steel inner liner

Performance series

FRPSvg/FFPSvg

Environmental conditions*

Ambient temperature +10 °C to +40 °C

Temperature stability

EN 16825

Refrigerators: +1 °C to +15 °C / -2 °C to +15 °C

Freezers: -9 °C to -26 °C

Refrigerators: Class M1

Freezers: Class L1

Refrigerators: with 3 humidity zones

Freezers: with NoFrost

Storage safety

Visual and audible alarms

Power failure alarm

Self-closing door < 90°

Mechanical lock

Features

Monochrome display, touch buttons

Refrigerators: GN 2/1, 530 × 650 mm (lengthwise insertion)

Freezers: GN 2/1, 530 × 650 mm (lengthwise insertion)

Individually adjustable maintenance timer

Castors as accessory, with adjustable feet as standard

Refrigerators:
LED ceiling lighting

Freezers:
LED ceiling lighting

Full-length integrated handle

Inside & outside: Chrome-nickel steel (1.4301 / AISI 304)

Connectivity can be retrofitted

Energy consumption

UltraEfficient

EU directive 2015/1094

Compliance

Safety machinery directive – EN 60335

Refrigerators and freezers with plastic inner liner

Perfection series

FRPSvh/FRPSrh/FFPSvh/FFPSrh

Ambient temperature +10 °C to +40 °C

EN 16825

Refrigerators: +1 °C to +15 °C / -2 °C to +15 °C

Freezers: -9 °C to -26 °C

Refrigerators: Class M1

Freezers: Class L1

Refrigerators: with 3 humidity zones

Freezers: with NoFrost

Visual and audible alarms

Power failure alarm

Self-closing door < 90°

Mechanical lock

2.4" colour display, Touch & Swipe

Refrigerators: GN 2/1, 530 × 650 mm
(lengthwise insertion)Freezers: GN 2/1, 530 × 650 mm
(lengthwise insertion)

Individually adjustable maintenance timer

Castors as accessory (except FRPSvh 1412),
with adjustable feet as standardRefrigerators:
vertical LED lightingFreezers:
vertical LED lighting

Full-length integrated handle

Inside & outside: Chrome-nickel steel
(1.4301 / AISI 304)

Connectivity

UltraEfficient

EU directive 2015/1094

Safety machinery directive – EN 60335

Performance series

FRFvg/FFFsg/FCFvg

Ambient temperature +10 °C to +40 °C

EN 16825

Refrigerators: +1 °C to +15 °C

Freezers: -9 °C to -26 °C

Refrigerators: Class M1

Freezers: Class L1

Refrigerators: with 3 humidity zones

Freezers: with SmartFrost

Visual and audible alarms

Power failure alarm

Self-closing door at < 90°

Mechanical lock

Monochrome display, touch buttons

Refrigerators: 75 cm wide:
GN 2/1, 650 × 530 mm (crosswise insertion)Freezers: 75 cm wide: Euronorm 600 × 400 mm
(crosswise insertion)

Individually adjustable maintenance timer

Castors/adjustable feet as accessory, 75 cm
wide appliances with adjustable feet as
standard

LED ceiling lighting on FCFvg model

Aluminium door handle

Inside: plastic
Outside: powder-coated steel

Connectivity can be retrofitted

SuperEfficient

EU directive 2015/1094
FFFsg no label

Safety machinery directive – EN 60335

Perfection series

FRFCvg/FRFBvg/FFFCvg/FFFBvg/FFFCsg/
FCFCvg

Ambient temperature +10 °C to +40 °C

EN 16825

Refrigerators: +1 °C to +15 °C / -2 °C to +15 °C

Freezers: -9 °C to -26 °C

Refrigerators: Class M1

Freezers: Class L1

Refrigerators: with 3 humidity zones

Freezers: with SmartFrost and NoFrost

Visual and audible alarms

Power failure alarm

Self-closing door at < 90°

Mechanical lock

Monochrome display, touch buttons

Refrigerators: 75 cm wide:
GN 2/1, 650 × 530 mm (crosswise insertion)Freezers: 75 cm wide: Euronorm 600 × 400 mm
(crosswise insertion)

Individually adjustable maintenance timer

Castors/adjustable feet as accessory, 75 cm
wide appliances with adjustable feet as
standardEvaporator cover (stops items freezing onto
inner liner), only for glass door models, optional
for insulating door modelsRefrigerators: Insulated and glass door
models with ceiling lighting
Side lighting on FCFCvg model

Freezers: LED lighting in the front housing

Aluminium door handle

Inside: plastic
Outside: stainless steel

Connectivity can be retrofitted

SuperEfficient

EU directive 2015/1094
FFFCsg no label

Safety machinery directive – EN 60335

The advantages at a glance

Special locking

To protect the stored products from unwanted access, up to 5 additional special locks are available as accessories for the refrigerators and freezers. This way, different locks can be installed on several appliances to ensuring only the people responsible for a particular appliance have access to it.

Power failure info

The power failure info reports when the appliance was temporarily without power and what the maximum temperature was during this time. This allows you to better assess the potential loss of quality.

Temperature stability meets the requirements of DIN EN 16825:2015

To maintain quality, groceries may only be subjected to minor temperature fluctuations. With stable values between $-1\text{ }^{\circ}\text{C}$ and $+5\text{ }^{\circ}\text{C}$, Liebherr appliances provide ideal conditions.

SuperCool

To make sure your Liebherr still maintains the ideal temperature when unrefrigerated goods are put in, SuperCool temporarily increases the cooling power. After a maximum of 12 hours, it automatically deactivates.

HumidityControl

HumidityControl allows you to adjust the humidity to your needs, providing an optimal storage climate and ensuring the freshness of your goods for even longer.

Grid shelves

The plastic-coated grid shelves allow versatile use of the interior and can carry up to 60 kg, meaning that goods can be stored safely, even when extremely heavy.



Compatible with standard containers

Liebherr refrigerators for the catering industry are generally designed for use with Euro standard gastronomy containers. This means that any standard container previously used will fit.



FRPSvh 6501 Perfection



Easily accessible refrigeration components

The cooling components are integrated very accessibly into the upper area of the machinery compartment, which significantly increases the capacity of the interior. The front can be easily lifted up to facilitate cleaning or servicing. When opened by more than 45° it can be completely detached.

Energy label according to EU Directive 2015/1094

The energy label shows at a glance just how economical professional Liebherr appliances are. This low energy consumption also translates into low overall operating costs.

Cataphoretically coated evaporator

The cataphoretically coated evaporator offers protection against particularly aggressive and corrosion-causing substances such as salts or fructose.

Compliance with DIN EN 60335 for appliance safety

For best-possible product safety, in addition to the legally required UKCA/CE marking, all safety-related areas are tested by an independent laboratory.

Self-closing door

To make loading, unloading and cleaning easier, the appliance door stays open if opened by beyond 90°. If the opening angle is less than 90°, it closes automatically for safety.



Replaceable door seal

Save time and money: Liebherr's plug-in door seals can be easily replaced. If a seal is damaged, you can replace it yourself without needing any tools at all.

Stainless steel interior and exterior

Hygiene is the top priority in places where food is stored. With this in mind, the deep drawn Gastronorm 2/1 stainless steel inner liner is made from hygienic stainless steel and omits awkward-to-clean functional parts. The seamless stainless steel side panels of the outer housing with insulation layer are also especially easy to clean. Stainless steel fridges and freezers GN 2/1 are jet water resistant inside and out, in accordance with IPX5.

Floor drainage

The integrated floor drainage in Liebherr's appliance enables convenient cleaning in small spaces. Water simply drains away and your appliance is quickly clean again.

Our GN 2/1 stainless steel fridges and freezers have been developed to meet the most demanding requirements. Powerful cooling components ensure quick cooling of food with low consumption. The HACCP-compliant electronics enable accurate temperature settings that remain stable – for ideal storage reliability even at high ambient temperatures. Height-adjustable racks and an interior without any obstructions allow highly flexible storage and easy cleaning.

Electronics with integrated temperature display

The easy-to-operate touch electronics control the energy-saving defrosting function according to the actual need. Via the SmartMonitoring interface, appliances can be connected to external cloud-based monitoring software. The integrated data logger registers and stores the minimum and maximum interior temperature for HACCP-compliant documentation. The electronic system gives out a visual and acoustic alarm in the event of temperature deviations or other problems, protecting your goods.



Quality right down to the smallest detail



LightAlarm

In case of an uncontrolled temperature rise, if a door has been left open or there were any other problems, the interior light of the appliance will start flashing. In the case of glass-door appliances, this quickly reveals where action is needed. In the case of solid-door appliances, the flashing interior warns to close the door immediately, in order to preserve the storage quality.



Extended temperature range -2 °C/+15 °C

Liebherr refrigerators have an extended temperature range from -2 °C to +15 °C, so even meat stays fresh and tasty for longer.



WiFi/LAN interface

The WiFi/LAN interface enables you to easily connect your appliances with Liebherr SmartMonitoring or existing local systems.



Stable, deep drawn inner liner

The deep drawn stainless steel inner lining has integrated ribs for the mounting surfaces. In addition, it is corrosion-resistant, hygienic and particularly easy to clean. The grids are loadable up to 60 kg – which means that even heavy goods present no problem. Gastronorm containers 2/1 can be pushed directly onto the shelf ribs.



LED lighting

Even in a dark environment, the LED lighting provides good illumination for the interior. The optimum overview means that the desired product is immediately at hand, the door can be quickly closed again and the interior temperature remains stable. This saves you time looking for things – and above all energy costs. The flush-mounted LED lighting makes cleaning easy.



Enlarged glass door view

Overview of the food in stock – essential during a hectic working day. The all-glass door with enlarged field of view provides maximum visibility of the appliance interior. This makes it easier to organise goods and to quickly find the required product, saving valuable time.

Refrigerators GN 2/1 with dynamic cooling, with stainless steel interior and exterior



FRPSvh 1412

Perfection

FRPSvh 1402

Perfection

Gross / net capacity	1414 / 1096 litre	1360 / 1096 litre
Exterior dimensions in mm (w / d / h)	1427 / 867 / 2115	1427 / 867 / 2115
Interior dimensions in mm (w / d / h)	1239 / 650 / 1512	1014 / 650 / 1512
Energy efficiency class ¹	C	B
Energy consumption in 365 days	1134 kWh	807 kWh
Climate class (energy directive)	4	5
Temperature class (energy directive)	M1	M1
Ambient temperature range ²	+10 °C to +40 °C	+10 °C to +40 °C
Refrigerant	R 290	R 290
Sound power level	60 dB(A)	60 dB(A)
Voltage / frequency	220 - 240V~ / 50 Hz	220 - 240V~ / 50 Hz
Connection rating	4.0 A	4.0 A
Rated consumption watts	320 W	320 W
Heat output	650 kJ/h	520 kJ/h
Cooling system	forced-air	forced-air
Defrost	automatic	automatic
Temperature range	+1 °C to +15 °C	-2 °C to +15 °C
Gastronorm	GN 2/1, 530 × 650 mm (530 mm wide)	GN 2/1, 530 × 650 mm (530 mm wide)
External cabinet finish	Chrome-nickel steel (1.4301 / AISI 304) / stainless steel	Chrome-nickel steel (1.4301 / AISI 304) / stainless steel
Door material / colour	Insulated glass door with Chrome-nickel steel frame (1.4301 / AISI 304) / stainless steel	Chrome-nickel steel (1.4301 / AISI 304) / stainless steel
Internal liner material	Chrome-nickel steel (1.4301 / AISI 304)	Chrome-nickel steel (1.4301 / AISI 304)
Type of control	2.4" touch & swipe colour display	2.4" touch & swipe colour display
Temperature display	external digital	external digital
Fault: warning signal	visual and audible	visual and audible
Interior light	LED light column both sides, separate connection	LED light column both sides
Connectivity type	SmartModule	SmartModule
Connectivity solution	integrated, removable	integrated, removable
Interface	WiFi/LAN	WiFi/LAN
Adjustable shelves	8	8
Shelf material	wire shelves plastic-coated	wire shelves plastic-coated
Shelf loading	60 kg	60 kg
Height of adjustable feet	115-175 mm	115-175 mm
Handle	full-length integrated handle	full-length integrated handle
Type of lock	mechanical	mechanical
Self-closing door	yes	yes
Door hinges	left hand / right hand	left hand / right hand
Gross / net weight	262 / 242 kg	225 / 200 kg
Remote condensing unit	FRPSrh 1412	FRPSrh 1402
Accessories		
Stainless steel / grey grid shelf	7112622 / 7112606	7112622 / 7112606
Castors Ø 100 mm		9597965
Foot pedal opener	9597649	9597649
Side-by-Side set in grey	9597778	9597778

Refrigerators GN 2/1 with dynamic cooling, with stainless steel interior and exterior



FRPSvh 6511

Perfection



FRPSvh 6501

Perfection

Gross / net capacity	625 / 486 litre	597 / 486 litre
Exterior dimensions in mm (w / d / h)	697 / 867 / 2115	697 / 867 / 2115
Interior dimensions in mm (w / d / h)	509 / 650 / 1512	509 / 650 / 1512
Energy efficiency class ¹	B	A
Energy consumption in 365 days	412 kWh	302 kWh
Climate class (energy directive)	5	5
Temperature class (energy directive)	M1	M1
Ambient temperature range ²	+10 °C to +40 °C	+10 °C to +40 °C
Refrigerant	R 290	R 290
Sound power level	60 dB(A)	60 dB(A)
Voltage / frequency	220 - 240V~ / 50 Hz	220 - 240V~ / 50 Hz
Connection rating	4.0 A	4.0 A
Rated consumption watts	220 W	220 W
Heat output	365 kJ/h	305 kJ/h
Cooling system	forced-air	forced-air
Defrost	automatic	automatic
Temperature range	+1 °C to +15 °C	-2 °C to +15 °C
Gastronorm	GN 2/1, 530 × 650 mm (530 mm wide)	GN 2/1, 530 × 650 mm (530 mm wide)
External cabinet finish	Chrome-nickel steel (1.4301 / AISI 304) / stainless steel	Chrome-nickel steel (1.4301 / AISI 304) / stainless steel
Door material / colour	Insulated glass door with Chrome-nickel steel frame (1.4301 / AISI 304) / stainless steel	Chrome-nickel steel (1.4301 / AISI 304) / stainless steel
Internal liner material	Chrome-nickel steel (1.4301 / AISI 304)	Chrome-nickel steel (1.4301 / AISI 304)
Type of control	2.4" touch & swipe colour display	2.4" touch & swipe colour display
Temperature display	external digital	external digital
Fault: warning signal	visual and audible	visual and audible
Interior light	vertical LED light strip recessed in left wall with separate switch	LED lighting column, left
Connectivity type / Connectivity solution	SmartModule / integrated, removable	SmartModule / integrated, removable
Interface	WiFi/LAN	WiFi/LAN
Adjustable shelves	4	4
Shelf material	wire shelves plastic-coated	wire shelves plastic-coated
Shelf loading	60 kg	60 kg
Height of adjustable feet	115-175 mm	115-175 mm
Handle	full-length integrated handle	full-length integrated handle
Type of lock	mechanical	mechanical
Self-closing door	yes	yes
Door hinges	right, reversible on site	right, reversible on site
Gross / net weight	157 / 138 kg	134 / 117 kg
Remote condensing unit	FRPSrh 6511	FRPSrh 6501
Accessories		
Stainless steel / grey grid shelf	7112622 / 7112606	7112622 / 7112606
Castors Ø 100 mm	9597828	9597828
Foot pedal opener	9597617	9597617
Side-by-Side set in grey	9597778	9597778

¹ As per EU Regulation 2015/1094-IV.

² Indicates the ambient temperature at which the appliance can be safely operated.

Freezers GN 2/1 with dynamic cooling, with stainless steel interior and exterior



FFPSvh 1402

Perfection

Gross / net capacity	1360 / 1096 litre
Exterior dimensions in mm (w / d / h)	1427 / 867 / 2115
Interior dimensions in mm (w / d / h)	507 / 650 / 1512
Energy efficiency class ¹	B
Energy consumption in 365 days	2208 kWh
Climate class (energy directive)	5
Temperature class (energy directive)	L1
Ambient temperature range ²	+10 °C to +40 °C
Refrigerant	R 290
Sound power level	60 dB(A)
Voltage / frequency	220 - 240V~ / 50/60 Hz
Connection rating	4.0 A
Rated consumption watts	580 W
Heat output	1485 kJ/h
Cooling system	forced-air
Defrost	automatic
Temperature range	-9 °C to -26 °C
Gastronorm	GN 2/1, 530 × 650 mm (530 mm wide)
External cabinet finish	Chrome-nickel steel (1.4301 / AISI 304) / stainless steel
Door material / colour	Chrome-nickel steel (1.4301 / AISI 304) / stainless steel
Internal liner material	Chrome-nickel steel (1.4301 / AISI 304)
Type of control	2.4" touch & swipe colour display
Temperature display	external digital
Fault: warning signal	visual and audible
Interior light	LED light column both sides
Connectivity type	SmartModule
Connectivity solution	integrated, removable
Interface	WiFi/LAN
Adjustable shelves	8
Shelf material	wire shelves plastic-coated
Shelf loading	60 kg
Height of adjustable feet	115-175 mm
Handle	full-length integrated handle
Type of lock	mechanical
Self-closing door	yes
Door hinges	left hand / right hand
Gross / net weight	225 / 200 kg
Remote condensing unit	FFPSrh 1402
Accessories	
Stainless steel / grey grid shelf	7112622 / 7112606
Castors Ø 100 mm	9597965
Foot pedal opener	9597649
Side-by-Side set in grey	9597778



FFPSvh 6501

Perfection

597 / 486 litre

697 / 867 / 2115

509 / 650 / 1512

B

1054 kWh

5

L1

+10 °C to +40 °C

R 290

60 dB(A)

220 - 240V~ / 50 Hz

4.0 A

610 W

975 kJ/h

forced-air

automatic

-9 °C to -26 °C

GN 2/1, 530 × 650 mm (530 mm wide)

Chrome-nickel steel (1.4301 / AISI 304) / stainless steel

Chrome-nickel steel (1.4301 / AISI 304) / stainless steel

Chrome-nickel steel (1.4301 / AISI 304)

2.4" touch & swipe colour display

external digital

visual and audible

LED lighting column, left

SmartModule

integrated, removable

WiFi/LAN

4

wire shelves plastic-coated

60 kg

115-175 mm

full-length integrated handle

mechanical

yes

right, reversible on site

144 / 127 kg

FFPSrh 6501

7112622 / 7112606

9597828

9597617

9597778



Longer shelf life, shorter walking distances – with the new counter fridges and freezers by Liebherr

Hectic activity in a confined space – working in a professional kitchen requires appliances that can adapt and perform flawlessly in every situation. Custom-fit Liebherr counter fridges, designed in well-thought-out heights, enable short walking distances and optimise workflows. Thanks to even temperature distribution up to the last corner, they keep foods reliably fresh and appealing for longer, all while being easily accessible. In combination with high-quality stainless steel, Liebherr's counter fridges ensure condensation-free, hygienic storage and maximum ease of cleaning. Even more convenience is guaranteed by the GN-compliant drawers, the number of which can be selected according to your individual needs. However, with our new appliance series, you not only benefit from enormous flexibility but also from maximum robustness and longevity. And not least, low energy and overall operating costs.



The advantages at a glance



Compatible with standard containers

Liebherr refrigerators for the catering industry are generally designed for use with Euro standard gastronomy containers. This means that any standard container used prior to now will fit.

Food-safe interior

All materials used in Liebherr appliances for the catering industry are food-safe and ideally suitable for storing unpackaged foods.

1/3, 1/2 and 2/3 drawers

Liebherr counter fridges can be configured with drawers of different heights depending on your needs. You can choose between three variants: 1/3, 1/2 or 2/3 drawers.



Removable drawers

Every detail of a Liebherr counter fridge is designed for functionality. For example, the drawers can be effortlessly removed for cleaning. Afterwards, they are just as easy to hook back into the telescopic rails.



Worktops

With the matching stainless steel worktop, your Liebherr counter fridge becomes the perfect work surface – with or without splash protection as desired. And if you're planning a customised solution, our counter fridges are also available as a version without a worktop.



Compliance with DIN EN 60335 for appliance safety

For best-possible product safety, in addition to the legally required UKCA/CE marking, all safety-related areas are tested by an independent laboratory.

Energy label according to EU Directive 2015/1094

The energy label shows at a glance just how economical professional Liebherr appliances are. This low energy consumption also translates into low overall operating costs.



Height adjustable feet

With height-adjustable feet, the height of the appliance can be adjusted to your needs. For example, you can raise your appliance to clean under it more easily.



Doors

Counter fridges are available in two versions: with drawers or with a door. The latter remains open automatically at an opening angle of more than 90° for easy loading and unloading.

Intuitive menu navigation

Convenience at your fingertips: Read out the appliance status from the control panel integrated flush in the door without needing to open it. The menu guidance is self-explanatory and controlled by three touch buttons.



Quality right down to the smallest detail



Stainless steel interior and exterior

Hygienic and long-lasting: The entire body and interior are made of high-quality stainless steel, which means the appliance is easy to clean and can be enjoyed by the customer for a very long time.



Ultra-efficient

Rising electricity prices are increasing pressure on the efficiency of refrigerators and freezers. From the compressor to the seal and electronics, Liebherr fully utilises the savings potential of all components. The result is impressive – especially in terms of lifetime operating costs.



Replaceable door seal

Save time and money: Liebherr's plug-in door seals can be easily replaced. If a seal is damaged, you can replace it yourself without needing any tools at all.

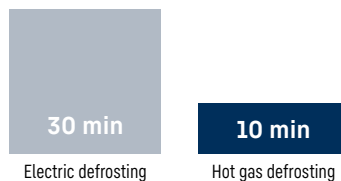


Frame heating

No need to worry about mould or ice ever again. To prevent condensation, all professional Liebherr cooling and freezing counters designed with drawers are equipped with frame heating. This not only reduces cleaning effort but also improves hygiene.

Advantage of hot gas defrosting

Reduces the time when the temperature is increased



Energy-efficient hot gas defrosting (for plug-in models)

Defrost quicker and less often. The electronic controller calculates the optimum defrost cycles based on the compressor run-time. Energy-efficient hot gas reduces the defrosting time from about 30 to just about 10 minutes – with only a minimum temperature increase in the appliance. This means the food doesn't have to be taken out during defrosting and is not unnecessarily exposed to changes in temperature.

Temperature stability meets the requirements of DIN EN 16825:2015

If they are to maintain their quality, groceries may only be subjected to minor temperature fluctuations. With stable values between $-1\text{ }^{\circ}\text{C}$ and $+5\text{ }^{\circ}\text{C}$ or between $-15\text{ }^{\circ}\text{C}$ and $-18\text{ }^{\circ}\text{C}$, Liebherr appliances provide ideal conditions.

Overview of the product range

Two compartments



Three compartments



Four compartments



Drawer options



100–150 mm
Height adjustable feet
Optional: Without feet



Optional:
Castors

- 1 Doors**
- 2 Drawers 2 x 1/2**
(interior height 20 cm)
- 3 Drawers 3 x 1/3**
(interior height 14 cm)
- 4 Drawers 1/3 + 2/3**
(interior height 30 cm)

Plug-in solution and remote cooling

All our counter fridges and freezers are available as either a plug-in appliance or with remote cooling. This means they can be perfectly adapted to your individual needs or local conditions. All models can also be installed on a pedestal.

Counter fridge and counter freezer with dynamic cooling, with stainless steel interior and exterior

Model variants (worktop)

Additional number for the worktop

001	Without worktop
T01	Stainless steel worktop without splash protection
S01	Stainless steel worktop with splash protection



The worktops of the new counter fridges and freezers are available in three different variants. The corresponding number must be added to the end of the model number (001, T01, S01). **Example: FFTSvsg 7521 001**

Counter fridges



Product name		Doors/drawers (left to right)			
Plug-in	Remote	First compartment	Second compartment	Third compartment	Fourth compartment
FRTSvsg 7521	FRTSrg 7521	Insulated door	Insulated door		
FRTSvsg 7550	FRTSrg 7550	Drawers 2× 1/2	Insulated door		
FRTSvsg 7551	FRTSrg 7551	Drawers 1/3 + 2/3	Insulated door		
FRTSvsg 7552	FRTSrg 7552	Drawers 3× 1/3	Insulated door		
FRTSvsg 7522	FRTSrg 7522	Drawers 2× 1/2	Drawers 2× 1/2		
FRTSvsg 7523	FRTSrg 7523	Drawers 3× 1/3	Drawers 2× 1/2		
FRTSvsg 7524	FRTSrg 7524	Drawers 3× 1/3	Drawers 3× 1/3		
FRTSvsg 7531	FRTSrg 7531	Insulated door	Insulated door	Insulated door	
FRTSvsg 7553	FRTSrg 7553	Drawers 2× 1/2	Insulated door	Insulated door	
FRTSvsg 7555	FRTSrg 7555	Drawers 3× 1/3	Insulated door	Insulated door	
FRTSvsg 7556	FRTSrg 7556	Drawers 2× 1/2	Drawers 2× 1/2	Insulated door	
FRTSvsg 7559	FRTSrg 7559	Drawers 1/3 + 2/3	Drawers 2× 1/2	Insulated door	
FRTSvsg 7561	FRTSrg 7561	Drawers 3× 1/3	Drawers 1/3 + 2/3	Insulated door	
FRTSvsg 7532	FRTSrg 7532	Drawers 2× 1/2	Drawers 2× 1/2	Drawers 2× 1/2	
FRTSvsg 7534	FRTSrg 7534	Drawers 3× 1/3	Drawers 3× 1/3	Drawers 3× 1/3	
FRTSvsg 7563	FRTSrg 7563	Drawers 2× 1/2	Drawers 2× 1/2	Drawers 3× 1/3	
FRTSvsg 7565	FRTSrg 7565	Drawers 2× 1/2	Drawers 3× 1/3	Drawers 3× 1/3	
FRTSvsg 7566	FRTSrg 7566	Drawers 2× 1/2	Drawers 3× 1/3	Drawers 1/3+2/3	
FRTSvsg 7541	FRTSrg 7541	Insulated door	Insulated door	Insulated door	Insulated door
FRTSvsg 7542		Drawers 2× 1/2	Drawers 2× 1/2	Drawers 2× 1/2	Drawers 2× 1/2
FRTSvsg 7543		Drawers 2× 1/3 + 2/3	Drawers 2× 1/3 + 2/3	Drawers 2× 1/3 + 2/3	Drawers 2× 1/3 + 2/3
	FRTSrg 7544	Drawers 2× 1/2	Insulated door	Insulated door	Insulated door
FRTSvsg 7570	FRTSrg 7570	Drawers 2× 1/2	Insulated door	Insulated door	Insulated door
FRTSvsg 7572	FRTSrg 7572	Drawers 3× 1/3	Insulated door	Insulated door	Insulated door
FRTSvsg 7573	FRTSrg 7573	Drawers 2× 1/2	Drawers 2× 1/2	Insulated door	Insulated door
FRTSvsg 7576	FRTSrg 7576	Drawers 2× 1/2	Drawers 1/3 + 2/3	Insulated door	Insulated door
FRTSvsg 7578	FRTSrg 7578	Drawers 2× 1/2	Drawers 2× 1/2	Drawers 2× 1/2	Insulated door
FRTSvsg 7582	FRTSrg 7582	Drawers 2× 1/2	Drawers 2× 1/2	Drawers 3× 1/3	Insulated door
FRTSvsg 7584		Drawers 3× 1/3	Drawers 2× 1/3 + 2/3	Drawers 2× 1/2	Insulated door

Counter freezers



Plug-in	Remote	First compartment	Second compartment	Third compartment	Fourth compartment
FFTSvsg 7521	FFTSrg 7521	Insulated door	Insulated door		
FFTSvsg 7531	FFTSrg 7531	Insulated door	Insulated door	Insulated door	
FFTSvsg 7541	FFTSrg 7541	Insulated door	Insulated door	Insulated door	Insulated door

The advantages at a glance

Dynamic cooling system

Powerful dynamic cooling system for stable and evenly distributed interior temperatures. The fan/door contact switch minimises loss of cold air when opening the door. Thanks to the evaporator, the system is virtually maintenance-free.



Compatible with standard containers

Liebherr refrigerators for the catering industry are generally designed for use with Euro standard gastronomy containers. This means that any standard container used prior to now will fit.

Grid shelves

The plastic-coated grid shelves allow versatile use of the interior and can carry up to 60 kg, meaning that goods can be stored safely, even when extremely heavy.

Seamless inner liner

In commercial design, the moulded inner liners are made of food-safe polystyrene. They are odourless, very robust, long-lasting and are easy to clean thanks to their large corner radii – therefore very hygienic.

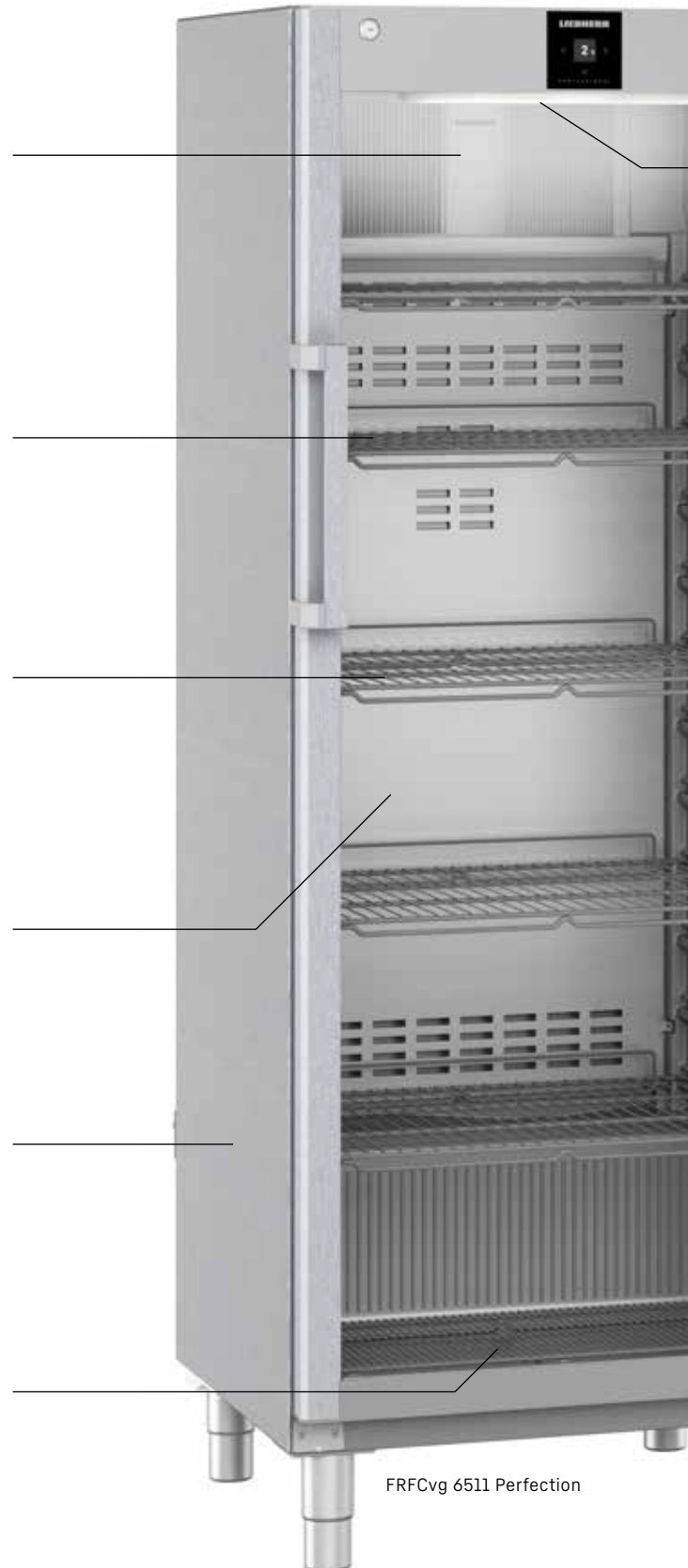
Stainless steel housing

The stainless-steel outer housing with single-piece side walls is designed without gaps, making it very hygienic and easy to clean.



Floor drainage

The integrated floor drainage in Liebherr's catering appliance enables convenient cleaning in small spaces. Water simply drains away and your appliance is soon hygienically clean again.



FRFCvg 6511 Perfection

LightAlarm

In the event of an uncontrolled temperature rise or other problems, the interior light of the appliance starts flashing. This quickly shows when action is needed.



LED lighting

Even in a dark environment, the LED ceiling lighting provides good illumination of the interior. This not only saves time looking for what you want, but above all, cuts energy costs.

Smart Frost

SmartFrost greatly reduces the frost build-up in the interior and on the stored food. Defrosting is required less often because the foam-insulated evaporator ensures even and energy efficient cooling.

No Frost

With professional appliances from Liebherr, defrosting is no longer necessary. Any moisture that occurs is combated by the fan-assisted cooling, and cyclical defrosting phases remove even the last moisture particles out of the interior. For convenient, safe, and ice-free storage.



Convenience at your fingertips

Read out the appliance status from the control panel integrated flush in the door without needing to open it. The menu guidance is self-explanatory and controlled by three touch buttons.



HumidityControl

The perfect climate conditions can only be created with the correct combination of temperature and humidity. HumidityControl allows you to adjust the humidity to your needs. For an optimal storage climate and the opportunity to enjoy that freshness for even longer.



Extended temperature range $-2\text{ °C}/+15\text{ °C}$

Liebherr refrigerators have an extended temperature range from -2 °C to $+15\text{ °C}$, so even meat stays fresh and tasty for longer.

Refrigerators GN 2/1 with dynamic cooling and plastic inner liner



FRFCvg 6501

Perfection

Gross / net capacity	655 / 479 litre
Exterior dimensions in mm (w / d / h)	747 / 769 / 2018
Interior dimensions in mm (w / d / h)	620 / 531 / 1660
Energy efficiency class ¹	C
Energy consumption in 365 days	635 kWh
Climate class (energy directive)	5
Temperature class (energy directive)	M1
Ambient temperature range ²	+10 °C to +40 °C
Refrigerant	R 600a
Sound power level	49 dB(A)
Voltage / frequency	220 - 240V~ / 50 Hz
Connection rating / Rated consumption watts	2.0 A / 240 W
Heat output	408 kJ/h
Cooling system	forced-air
Defrost	automatic
Temperature range	-2 °C to +15 °C
Gastronorm	GN 2/1, 650 × 530 mm (650 mm wide)
External cabinet finish	stainless steel
Door material / colour	stainless steel / stainless steel
Internal liner material	moulded polystyrol (silver)
Type of control	monochrome display, touch buttons
Temperature display	external digital
Fault: warning signal	visual and audible
Interior light	LED ceiling lighting
Connectivity type / Connectivity solution	SmartModule / retrofittable
Interface	WiFi/LAN (optional)
Adjustable shelves	5
Shelf material	wire shelves plastic-coated
Shelf loading	60 kg
Height of adjustable feet	150 - 180 mm
Handle	aluminium handle
Type of lock	mechanical
Self-closing door	yes
Door hinges	right, reversible on site
Gross / net weight	92 / 83 kg
Also available with castors	
Accessories	
Stainless steel / grey / white grid shelf	7112570 / 7112568 / 7112566
Stainless steel / grey / white base grid	7113227 / 7113231 / 7113223
Castors Ø 80 mm	9086926
Castors Ø 100 mm	9080023
Additional lock barrels (up to 5)	on request
Side-by-Side set in grey / white	9006973 / -
SmartModule	6145269



FRFCvg 5501

Perfection

571 / 419 litre

747 / 769 / 1818

620 / 531 / 1442



620 kWh

5

M1

+10 °C to +40 °C

R 600a

49 dB(A)

220 - 240V~ / 50 Hz

2.0 A / 250 W

358 kJ/h

forced-air / automatic

-2 °C to +15 °C

GN 2/1, 650 × 530 mm (650 mm wide)

stainless steel

stainless steel / stainless steel

moulded polystyrol (silver)

monochrome display, touch buttons

external digital

visual and audible

LED ceiling lighting

SmartModule / retrofittable

WiFi/LAN (optional)

4 / wire shelves plastic-coated

60 kg

150 - 180 mm

aluminium handle

mechanical

yes / right, reversible on site

86 / 77 kg

7112570 / 7112568 / 7112566

7113227 / 7113231 / 7113223

9086926

9080023

on request

9017742 / - / -

6145269

Refrigerators with dynamic cooling and plastic inner liner



FRFBvg 5501

Perfection

Gross / net capacity	571 / 419 litre
Exterior dimensions in mm (w / d / h)	747 / 769 / 1818
Interior dimensions in mm (w / d / h)	620 / 531 / 1442
Energy efficiency class ¹	C
Energy consumption in 365 days	620 kWh
Climate class (energy directive)	5
Temperature class (energy directive)	M1
Ambient temperature range ²	+10 °C to +40 °C
Refrigerant	R 600a
Sound power level	49 dB(A)
Voltage / frequency	220 - 240V~ / 50 Hz
Connection rating / Rated consumption watts	2.0 A / 250 W
Heat output	358 kJ/h
Cooling system / Defrost	forced-air / automatic
Temperature range	-2 °C to +15 °C
Gastronorm	GN 2/1, 650 × 530 mm (650 mm wide)
External cabinet finish	BlackSteel / BlackSteel
Door material / colour	BlackSteel / BlackSteel
Internal liner material	moulded polystyrol (silver)
Type of control	monochrome display, touch buttons
Temperature display	external digital
Fault: warning signal	visual and audible
Interior light	LED ceiling lighting
Connectivity type / Connectivity solution	SmartModule / retrofittable
Interface	WiFi/LAN (optional)
Adjustable shelves / Shelf material	4 / wire shelves plastic-coated
Shelf loading	60 kg
Height of adjustable feet	150 - 180 mm
Handle	aluminium handle
Type of lock	mechanical
Self-closing door / Door hinges	yes / right, reversible on site
Gross / net weight	86 / 77 kg
Accessories	
Stainless steel / grey / white grid shelf	7112570 / 7112568 / 7112566
Stainless steel / grey / white base grid	7113227 / 7113231 / 7113223
Castors Ø 80 mm	9086926
Castors Ø 100 mm	9080023
Adjustable feet, 90 - 120 mm	
Adjustable feet, 150 - 180 mm	
Additional lock barrels (up to 5)	on request
Side-by-Side set in grey / white / black	- / - / 9017743
SmartModule	6145269



SPECIAL ORDER

FRFvg 5501

Performance

571 / 419 litre
747 / 769 / 1818
620 / 531 / 1460



576 kWh
5
M1
+10°C to +40°C
R 600a
49 dB(A)
220 - 240V~ / 50 Hz
2.0 A / 250 W
358 kJ/h
forced-air / automatic
+1°C to +15°C
GN 2/1, 650 × 530 mm (650 mm wide)
steel / white
steel / white

commercial grade moulded polystyrol
monochrome display, touch buttons
external digital
visual and audible

SmartModule / retrofittable
WiFi/LAN (optional)
4 / wire shelves plastic-coated
60 kg
150 - 180 mm
aluminium handle
mechanical
yes / right, reversible on site
86 / 78 kg

7112570 / 7112568 / 7112566
7113227 / 7113231 / 7113223
9086926
9080023

on request
- / 9017739 / -
6145269



SPECIAL ORDER

FRFCvg 4001

Perfection

420 / 289 litre
597 / 654 / 1884
460 / 423 / 1642



540 kWh
5
M1
+10°C to +40°C
R 600a
48 dB(A)
220 - 240V~ / 50 Hz
2.0 A / 240 W
321 kJ/h
forced-air / automatic
-2°C to +15°C
stainless steel
stainless steel / stainless steel

moulded polystyrol (silver)
monochrome display, touch buttons
external digital
visual and audible
LED ceiling lighting

SmartModule / retrofittable
WiFi/LAN (optional)
5 / wire shelves plastic-coated
45 kg
aluminium handle
mechanical
yes / right, reversible on site
70 / 65 kg

7112572 / 7113221 / 7113308
7113229 / 7113243 / 7113312
9086926
9080023
9080022
9086924

on request
9006973 / - / -
6145269



SPECIAL ORDER

FRFvg 4001

Performance

420 / 289 litre
597 / 654 / 1884
460 / 423 / 1660



514 kWh
5
M1
+10°C to +40°C
R 600a
48 dB(A)
220 - 240V~ / 50 Hz
2.0 A / 240 W
321 kJ/h
forced-air / automatic
+1°C to +15°C
steel / white
steel / white

commercial grade moulded polystyrol
monochrome display, touch buttons
external digital
visual and audible

SmartModule / retrofittable
WiFi/LAN (optional)
5 / wire shelves plastic-coated
45 kg
aluminium handle
mechanical
yes / right, reversible on site
70 / 64 kg

7112572 / 7113221 / 7113308
7113229 / 7113243 / 7113312
9086926
9080023
9080022
9086924

on request
- / 9006786 / -
6145269

1 As per EU Regulation 2015/1094-IV.

2 Indicates the ambient temperature at which the appliance can be safely operated.

BlackSteel

Black stainless steel strikingly emphasises the simplistic beauty of pure metal. The BlackSteel surface captivates with its unique vertical polish and refined touches, giving the material its characteristic sharpness and making it resistant to scratches and fingerprints. So your appliance always remains an eye-catcher.



Starting a manual defrost

Doors left open or evaporating substances can cause ice on the evaporator resulting in temperature fluctuations and higher energy consumption. To clear the appliance from ice, you can also start an automatic defrost manually, restoring optimal storage conditions and lowering energy consumption.



Suitable for Euronorm box (75 cm wide freezers)

Professional appliances for bakeries and the catering industry are specially designed to meet the needs of kitchens and bakeries and are therefore suitable for use with Euronorm boxes.

Gross / net capacity
Exterior dimensions in mm (w / d / h)
Interior dimensions in mm (w / d / h)
Energy efficiency class ¹
Energy consumption in 365 days
Climate class (energy directive)
Temperature class (energy directive)
Ambient temperature range ²
Refrigerant
Sound power level
Voltage / frequency
Connection rating
Rated consumption watts
Heat output
Cooling system
Defrost
Temperature range
Gastronorm
External cabinet finish
Door material / colour
Internal liner material
Type of control
Temperature display
Fault: warning signal
Interior light
Connectivity type / Connectivity solution
Interface
Adjustable shelves
Shelf material
Shelf loading
Height of adjustable feet
Handle
Type of lock
Self-closing door
Door hinges
Gross / net weight
Accessories
Stainless steel / grey / white grid shelf
Stainless steel / grey / white base grid
Castors Ø 80 mm / Ø 100 mm
Adjustable feet, 90 – 120 mm / 150 – 180 mm
Additional lock barrels (up to 5)
Side-by-Side set in grey / black
SmartModule



FFFCvg 6501

Perfection

544 / 378 litre
747 / 769 / 2018
603 / 510 / 1318



1116 kWh
5
L1
+10 °C to +40 °C
R 290
55 dB(A)
220 - 240V~ / 50 Hz
2.0 A
270 W
771 kJ/h
forced-air
automatic
-9 °C to -26 °C
600 × 400 mm (600 mm wide)
stainless steel
stainless steel / stainless steel
moulded polystyrol (silver)
monochrome display, touch buttons
external digital
visual and audible
LED
SmartModule / retrofittable
WiFi/LAN (optional)
5
wire shelves plastic-coated
60 kg
150 - 180 mm
aluminium handle
mechanical
yes
right, reversible on site
109 / 106 kg
7112592 / 7112588 / 7112590
7113227 / 7113231 / 7113223
9086926 / 9080023
on request
9006973 / -
6145269



FFFCvg 5501

Perfection

472 / 322 litre
747 / 769 / 1818
603 / 510 / 1118



1007 kWh
5
L1
+10 °C to +40 °C
R 290
55 dB(A)
220 - 240V~ / 50 Hz
2.0 A
270 W
721 kJ/h
forced-air
automatic
-9 °C to -26 °C
600 × 400 mm (600 mm wide)
stainless steel
stainless steel / stainless steel
moulded polystyrol (silver)
monochrome display, touch buttons
external digital
visual and audible
LED
SmartModule / retrofittable
WiFi/LAN (optional)
4
wire shelves plastic-coated
60 kg
150 - 180 mm
aluminium handle
mechanical
yes
right, reversible on site
100 / 92 kg
7112592 / 7112588 / 7112590
7113227 / 7113231 / 7113223
9086926 / 9080023
on request
9017742 / -
6145269



FFFBvg 5501

Perfection

472 / 322 litre
747 / 769 / 1818
600 / 510 / 1118



1007 kWh
5
L1
+10 °C to +40 °C
R 290
55 dB(A)
220 - 240V~ / 50 Hz
2.0 A
270 W
721 kJ/h
forced-air
automatic
-9 °C to -26 °C
600 × 400 mm (600 mm wide)
BlackSteel / BlackSteel
BlackSteel / BlackSteel
moulded polystyrol (silver)
monochrome display, touch buttons
external digital
visual and audible
LED
SmartModule / retrofittable
WiFi/LAN (optional)
4
wire shelves plastic-coated
60 kg
150 - 180 mm
aluminium handle
mechanical
yes
right, reversible on site
101 / 92 kg
7112592 / 7112588 / 7112590
7113227 / 7113231 / 7113223
9086926 / 9080023
on request
- / 9017743
6145269

1 As per EU Regulation 2015/1094-IV.

2 Indicates the ambient temperature at which the appliance can be safely operated.

The advantages at a glance

Automatic defrosting

The modern and efficient electronics ensure that the appliance defrosts automatically in the compressor downtimes, so that manual defrosting is no longer necessary.

Visual and acoustic alarm

Visual and acoustic alarms warn of uncontrolled temperature rise, loss of cold air and open doors.

Stable metal carrier grids

The stable metal carrier grids are loadable up to 45 kg, which optimally stores and protects the goods. Their height adjustability enables a versatile arrangement and use of the interior.

High-quality cooling components

High-quality cooling components, optimised insulation and sophisticated construction ensure maximum energy efficiency and low operating costs.

Self-closing door and exchangeable magnetic seal

Self-closing door with easy-to-exchange magnetic seal. For convenient operation and in order to prevent energy loss, an integrated mechanism ensures that the door closes on its own after every opening.

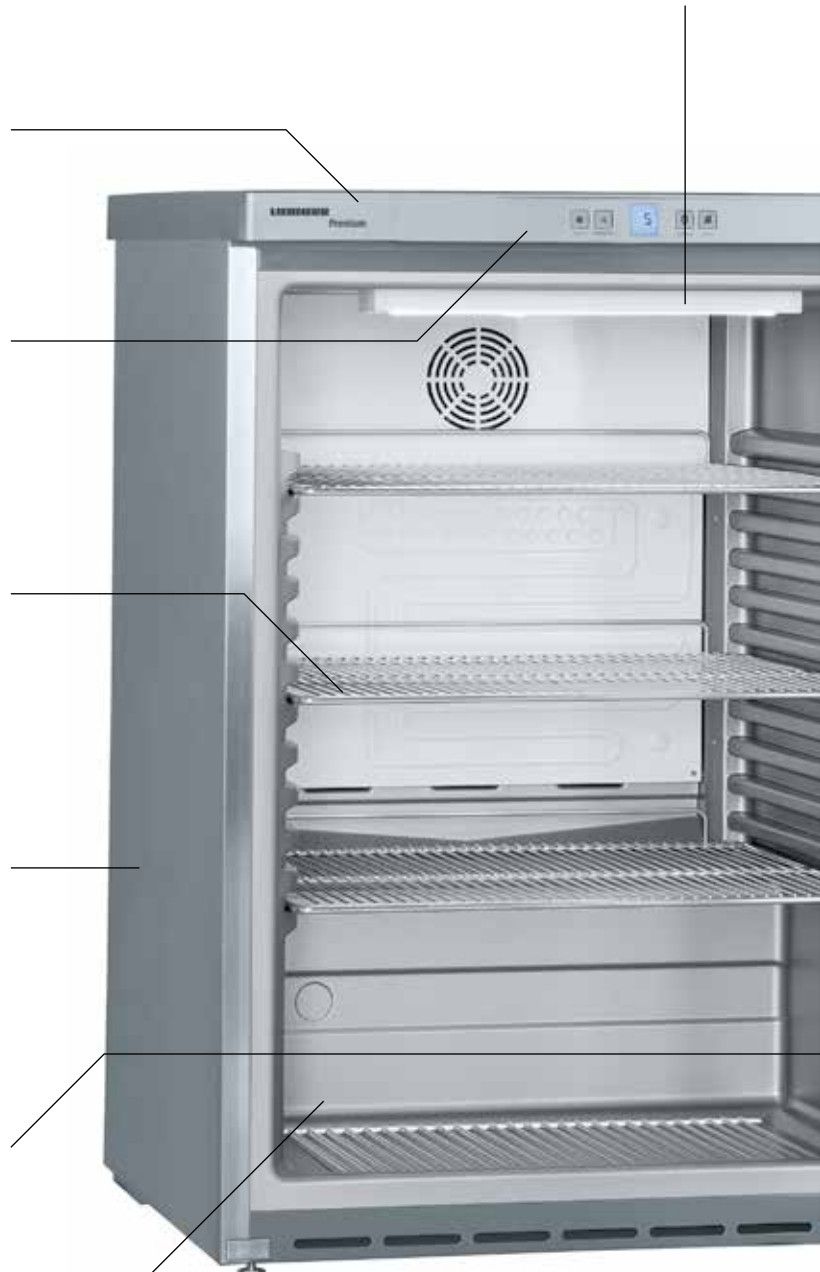
Deep drawn interior liner

The interior liner, deep drawn from one piece of polystyrene, is easy to clean and odour-neutral. Since there are no disturbing corners and the large radii ease cleaning, this enables perfect hygiene.



LED lighting and glass door

The glass door enables a good view of the goods and presentation. The single-piece, visually high-quality door frame is very robust. Energy-efficient LEDs provide even illumination throughout the interior and the products. Thanks to the reduced heat generation, the quality of the goods is not compromised.



FKUv 1663 Premium

Interchangeable door hinge

The door hinges can be replaced without additional components and allow the appliances to be adapted to a new location.



Stable locks

Stable locks prevent unwanted access.



Robust door handle

The door handle is designed for frequent use. It is ergonomic and easy to grip with either hand, and it is very easy to clean.



Under-worktop – and easy to integrate

The appliances can be integrated under a worktop. In this case, the ventilation and extraction on the back of the appliance requires a ventilation cross-section in the worktop of at least 200 cm². Without ventilation grilles, the niche height must be at least 3 cm more than the height of the appliance. The appliances are designed to the specific work heights in catering, at 83 cm.



Ultra-modern electronics

The models have a high-quality electronic control with a large temperature display and lots of practical functions. The control system is integrated into the worktop – the temperature can be accurately set. A visual and audible door and temperature alarm warns of uncontrolled temperature increases or an opened door. In the FKUv series, the contactless fan stop function reduces loss of cold air during door openings and contributes to temperature constancy. The sophisticated defrosting control ensures failure-free and worry-free operation even under extreme conditions and with frequent door openings. A fan operation selector function enables you to adapt the storage climate perfectly to different products.

Under-worktop fridges with dynamic cooling



FKUv 1663

Premium

Gross / net capacity	148 / 130 litre
Exterior dimensions in mm (w / d / h)	600 / 615 / 830
Interior dimensions in mm (w / d / h)	440 / 435 / 670
Energy efficiency class ¹	
Energy consumption in 365 days ²	353 kWh
Climate class (energy directive)	CC2
Temperature class (energy directive)	K4
Ambient temperature range ³	+16 °C to +35 °C
Refrigerant	R 600a
Sound power level	45 dB(A)
Voltage / frequency	220 - 240V~ / 50 Hz
Connection rating	1.0 A
Cooling system	forced-air
Defrost	automatic
Temperature range	+1 °C to +15 °C
External cabinet finish	stainless steel
Door material / colour	glass door with stainless steel frame / stainless steel
Internal liner material	moulded polystyrol (silver)
Type of control	LED 7-segment display with buttons
Temperature display	external digital
Fault: warning signal	visual and audible
Interior light	LED, separate connection
Adjustable shelves	3
Shelf material	clear-coated wire shelves
Loading capacity 0.5L PET / facings 0.5L PET	92 / 7
Loading capacity 0.33L can / facings 0.33L can	163 / 6
Shelf loading	45 kg
Handle	stainless steel slimline door handle
Type of lock	mechanical
Self-closing door	yes
Door hinges	right, reversible on site
Gross / net weight	46 / 44 kg
Accessories	
White grid shelf	
Metal grid shelf	7112321
White stacking kit (GGU below / top)	
Stainless steel stacking kit (GGU below / top)	7777647
Roller bars	9086607
Lock	

FKUv 1660

Premium

Gross / net capacity	134 / 130 litre
Exterior dimensions in mm (w / d / h)	600 / 615 / 830
Interior dimensions in mm (w / d / h)	440 / 435 / 670
Energy efficiency class ¹	
Energy consumption in 365 days ²	225 kWh
Climate class (energy directive)	CC2
Temperature class (energy directive)	K4
Ambient temperature range ³	+16 °C to +40 °C
Refrigerant	R 600a
Sound power level	45 dB(A)
Voltage / frequency	220 - 240V~ / 50 Hz
Connection rating	1.0 A
Cooling system	forced-air
Defrost	automatic
Temperature range	+1 °C to +15 °C
External cabinet finish	stainless steel
Door material / colour	stainless steel / stainless steel
Internal liner material	moulded polystyrol (silver)
Type of control	LED 7-segment display with buttons
Temperature display	external digital
Fault: warning signal	visual and audible
Interior light	
Adjustable shelves	3
Shelf material	clear-coated wire shelves
Loading capacity 0.5L PET / facings 0.5L PET	92 / 7
Loading capacity 0.33L can / facings 0.33L can	163 / 6
Shelf loading	45 kg
Handle	stainless steel slimline door handle
Type of lock	mechanical
Self-closing door	yes
Door hinges	right, reversible on site
Gross / net weight	39 / 36 kg
Accessories	
White grid shelf	
Metal grid shelf	7112321
White stacking kit (GGU below / top)	
Stainless steel stacking kit (GGU below / top)	7777647
Roller bars	9086607
Lock	

¹ As per EU Regulation 2019/2018.

² Measured as per EN 16902:2016.

³ Indicates the ambient temperature at which the appliance can be safely operated.



SPECIAL ORDER

FKUv 1613

Premium

148 / 130 litre

600 / 615 / 830

440 / 435 / 670



353 kWh

CC2

K4

+16 °C to +35 °C

R 600a

45 dB(A)

220 - 240V~ / 50 Hz

1.0 A

forced-air

automatic

+1 °C to +15 °C

steel / white

Insulating glass door with steel frame / white

commercial grade moulded polystyrol

LED 7-segment display with buttons

external digital

visual and audible

LED, separate connection

3

wire shelves plastic-coated

92 / 7

163 / 6

45 kg

ergonomic slimline handle

mechanical

yes

right, reversible on site

45 / 43 kg

7113333

7112321

9876641

9086607

on request



SPECIAL ORDER

FKUv 1613 version 744

Premium

148 / 130 litre

600 / 615 / 830

440 / 435 / 670



353 kWh

CC2

K4

+16 °C to +35 °C

R 600a

45 dB(A)

220 - 240V~ / 50 Hz

1.0 A

forced-air

automatic

+1 °C to +15 °C

steel / black

Insulating glass door with steel frame / black

moulded polystyrol (silver)

LED 7-segment display with buttons

external digital

visual and audible

LED, separate connection

3

clear-coated wire shelves

92 / 7

163 / 6

45 kg

ergonomic slimline handle

mechanical

yes

right, reversible on site

45 / 42 kg

7112321

9086607

on request

The advantages at a glance

Under-worktop

The GGU models with a height of 83 cm can easily be installed under a worktop and are a space-saving and perfect solution, particularly if you have little space.

Visual and acoustic alarm

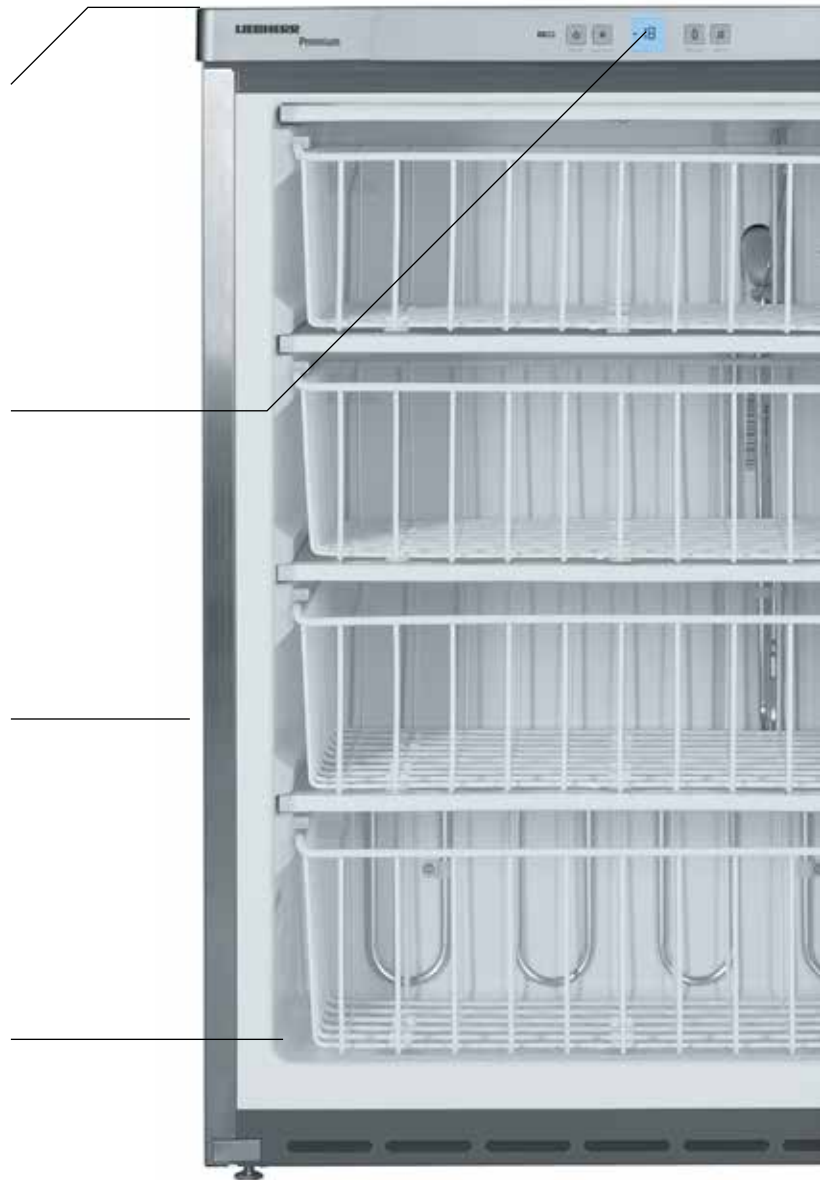
Visual and acoustic alarms warn of uncontrolled temperature rise, loss of cold air and open doors.

Environmentally friendly coolants

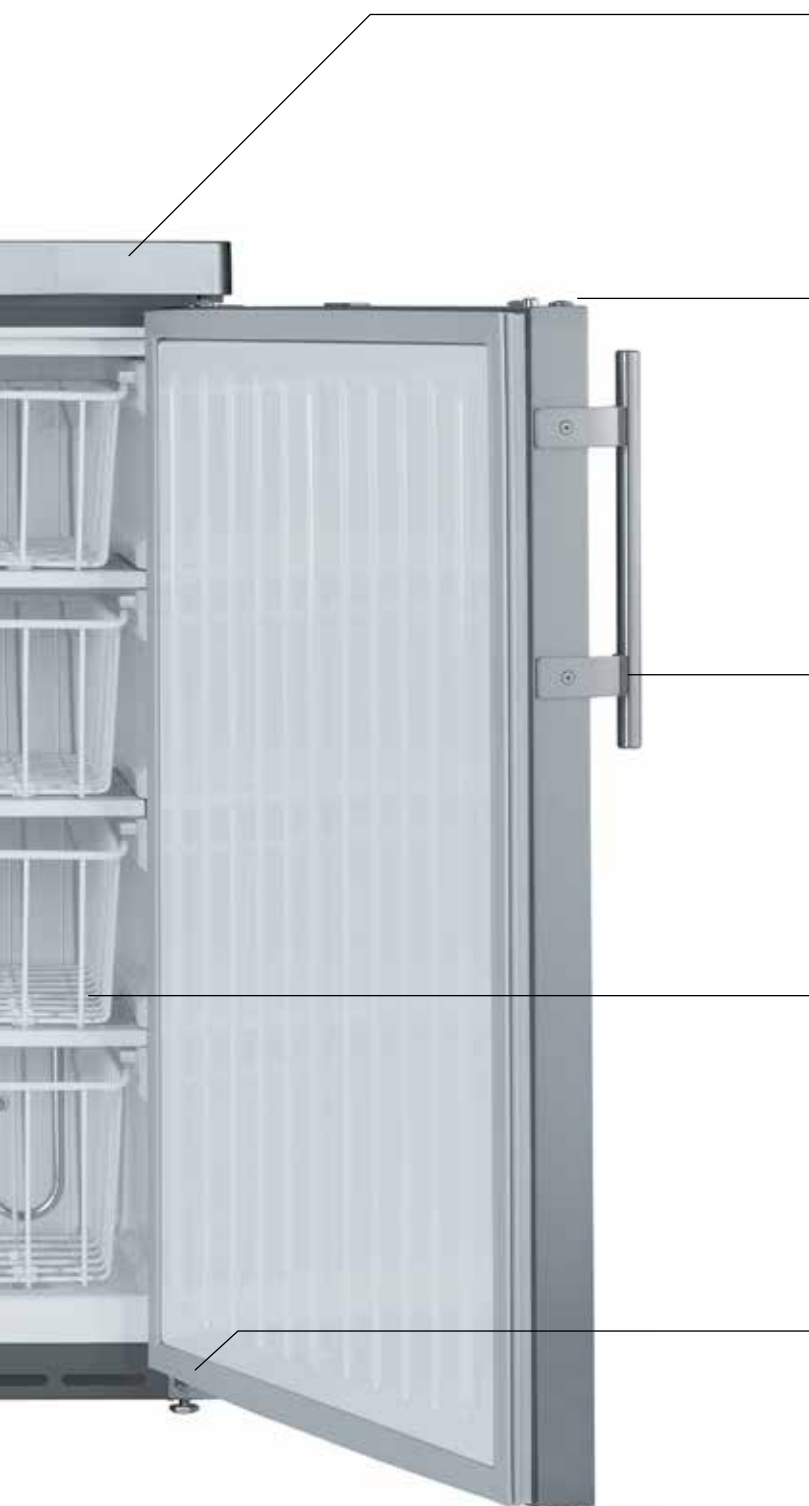
The environmentally refrigerant R 600a, in combination with the highly efficient compressor, is powerful and very energy efficient.

Deep drawn interior liner

The interior liner, deep drawn from one piece of polystyrene, is easy to clean and odour-neutral. Since there are with no sharp corners and the large radii ease cleaning, this enables perfect hygiene.



GGU 1550 Premium



High-quality cooling components

High-quality cooling components, optimised insulation and sophisticated construction ensure maximum energy efficiency and low operating costs.



Stable locks

Stable locks prevent unwanted access.

Robust door handle

The door handle is designed for frequent use. It is ergonomic and easy to grip with either hand, and it is very easy to clean.



Stable baskets

Stable baskets are easily moved, allow products to be viewed clearly and quickly and enable flexible partitioning of the interior space.

Interchangeable door hinge

The door hinges can be replaced without additional components and allow the appliances to be adapted to a new location.

Quality right down to the smallest detail

Liebherr's under-worktop freezers are real space-savers. When space is limited, the available space must be used as effectively as possible – without compromising the cooling power or the fresh storage of food. In these compact models, the goods are always stored under the best refrigeration conditions, while at the same time, the appliances are very energy efficient and economical.



Energy-efficiency with R 600a

Liebherr appliances are optimised for maximum energy efficiency and low operating costs. The natural and environmentally-friendly R 600a is the only refrigerant used. When used with highly efficient compressors, it is extraordinarily efficient and, with its low global warming potential, future-proof.



Under-worktop – and easy to integrate

The appliances can be integrated under a worktop. In this case, the ventilation and extraction on the back of the appliance requires a ventilation cross-section in the worktop of at least 200 cm². Without ventilation grilles, the niche height must be at least 3 cm more than the height of the appliance. The appliances are designed to the specific work heights in catering, at 83 cm.



Practical baskets

The easy to remove baskets offer a good and easy view of the goods and ensure excellent order in the interior.



GGU 1550

Premium

Gross / net capacity	143 / 133 litre
Exterior dimensions in mm (w / d / h)	600 / 615 / 830
Interior dimensions in mm (w / d / h)	474 / 443 / 676
Energy consumption in 365 days	250 kWh
Climate class (energy directive)	7
Ambient temperature range ¹	+10 °C to +35 °C
Refrigerant	R 600a
Sound power level	45 dB(A)
Voltage / frequency	220 - 240V~ / 50 Hz
Connection rating	0.6 A
Cooling system	static
Defrost	manual
Temperature range	-9 °C to -26 °C
External cabinet finish	stainless steel
Door material / colour	stainless steel / stainless steel
Internal liner material	commercial grade moulded polystyrol
Type of control	LED 7-segment display with buttons
SuperFrost	quantity-controlled
Temperature rise time	24 h
Temperature display	external digital
Fault: warning signal	visual and audible
Drawers	0
Number of baskets included	4
Shelves, freezer compartment	4
Shelf material	evaporator plates
Shelf loading	24 kg
Compartment height in mm	3 × 150, 1 × 170
Handle	stainless steel slimline door handle
Type of lock	mechanical
Door hinges	right, reversible on site
Gross / net weight	42 / 39 kg
Accessories	
Stainless steel stacking kit (FKUv below / top)	7777647
White stacking kit (FKUv below / top)	
Roller bars	9086607
Standard full-depth basket	
Short bottom basket	
Full-depth drawer	9790331
Lock	

¹ Indicates the ambient temperature at which the appliance can be safely operated.

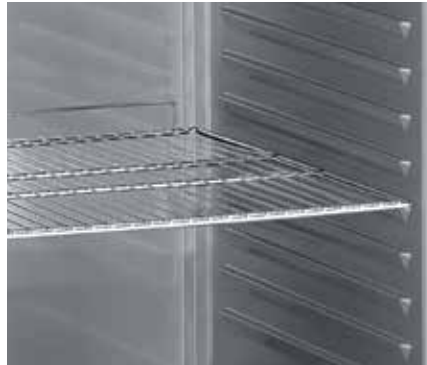
Accessories

Refrigerators and freezers GN 2/1 with dynamic cooling, with stainless steel interior and exterior



Side-by-Side set

The Side-by-Side set is easy to fit and enables the convenient use of two or more appliances next to one another and also allows their arrangement in a visually appealing manner. Furthermore, the Side-by-Side set prevents condensation and ice formation between two appliances which, without the Side-by-Side set, would otherwise be positioned next to one another.



Stainless steel shelves

The stainless steel Gastronorm 2/1 shelves are sturdy and have a loading capacity of up to 60 kg.



Shelves grey

The plastic-coated shelves have a loading capacity of up to 60 kg.



Castors Ø 100 mm

The sturdy castors facilitate transport and allow quick cleaning underneath and behind the appliance. A total of four castors including mounting accessories are supplied. Two of the castors also have a locking brake.



Foot pedal opener

If you don't have a hand free, you can conveniently open the door with the foot pedal available as an accessory.



SmartModule

SmartModule connects refrigerators and freezers in a network with Liebherr SmartMonitoring and allows you to use its extensive digital monitoring and documentation functions. In addition, appliances can be integrated into a customer's existing monitoring system via a local API. The small electronic unit with integrated LAN/WiFi is ready to use as soon as it is mounted on the back of the appliance.

Counter fridges with dynamic cooling, with stainless steel interior and exterior



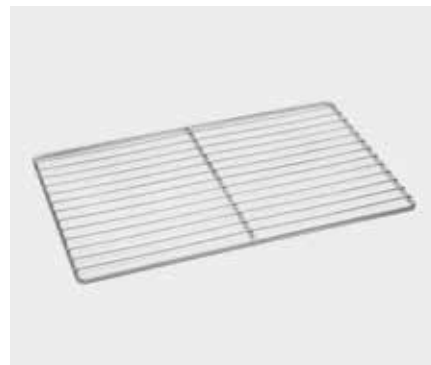
Bearing bracket right / left

Liebherr refrigerator and freezer counters have interchangeable door hinges. All you need for mounting on the opposite side is the correct bearing bracket set. This way, you can always place your counter appliances wherever you want.



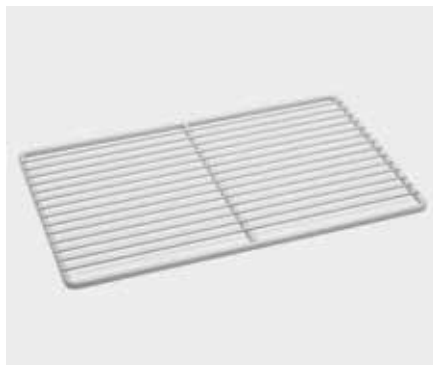
Optional castor set Ø100MM (Caster set, 4 pieces)

The sturdy castors (Ø 100 mm) facilitate transport and allow quick cleaning underneath and behind the appliance. A total of four castors including mounting accessories are supplied. Two of the castors also have a locking brake.



Stainless steel grid shelf

Additional shelves provide more space and clarity in your refrigerator or freezer. Made of stainless steel, these high-quality grid shelves not only give you the benefit of additional storage space, but also high quality and durability.



Grey grid shelf

Additional storage space that you can enjoy for a long time: The grid shelf can be flexibly positioned and gives you more space and clarity inside your appliance. With its durable coating, the additional grid shelf is also very robust and easy to clean.

Accessories

Refrigerators and freezers GN 2/1 with dynamic cooling and plastic inner liner/ Freezers with static cooling and plastic inner liner / fridge-freezers



Stainless steel base grid

With the sturdy base grid, you can also make the most of the appliance floor. Made of stainless steel, it protects the inner liner from scratches and other damage.



White / grey base grid

With the sturdy base grid, you can also make the most of the appliance floor. The grid has an abrasion-resistant coating and protects the inner liner from scratches and other damage.



Castors Ø 100 mm / Castors Ø 80 mm

The sturdy castors (Ø 100 / 80 mm) facilitate transport and allow quick cleaning underneath and behind the appliance. A total of four castors including mounting accessories are supplied. Two of the castors also have a locking brake.



SmartModule

SmartModule connects refrigerators and freezers in a network with Liebherr SmartMonitoring and allows you to use its extensive digital monitoring and documentation functions. In addition, appliances can be integrated into a customer's existing monitoring system via a local API. The small electronic unit with integrated LAN/WiFi is ready to use as soon as it is mounted on the back of the appliance.



Stainless steel grid shelf

Additional shelves provide more space and clarity in your refrigerator or freezer. Made of stainless steel, these high-quality grid shelves not only give you the benefit of additional storage space, but also high quality and durability.



White / grey grid shelf

Additional storage space that you can enjoy for a long time. The grid shelf can be flexibly positioned and gives you more space and clarity inside your appliance. With its durable coating, the additional grid shelf is also very robust and easy to clean.



White / grey wire basket

The spacious wire basket made of coated metal is the perfect place for large, packaged goods. With skids on the bottom, it can be easily placed and moved on racks or glass plates. It provides a lot more space and a better overview of your stored goods.



White / grey wire basket short

The plastic-coated wire basket is very robust, offers a good view of the products inside and with a capacity of 30 litres ensures optimum use of the interior space.



Height-adjustable feet, 90-120 mm

The height-adjustable feet create the necessary clearance for easy cleaning under the appliance. With an individually adjustable height of 90 to 120 mm, they perfectly compensate any unevenness on the floor.

**Refrigerators and freezers GN 2/1 with dynamic cooling and plastic inner liner/
Freezers with static cooling and plastic inner liner / fridge-freezers**



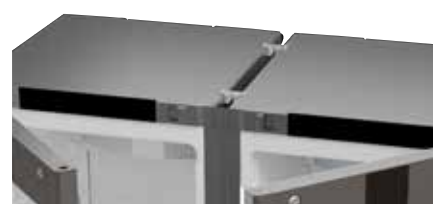
Height-adjustable feet, 150 – 180 mm

The height-adjustable feet create the necessary clearance for easy cleaning under the appliance. With an individually adjustable height of 150 to 180 mm, they perfectly compensate any unevenness on the floor.



Perforated metal shelf

To ensure that even small items are stored stably in the refrigeration appliances, Liebherr has developed shallow perforated metal shelves especially for this purpose. They are made of coated metal and designed for a maximum load of up to 45 kg. The perforation ensures unhindered air circulation throughout the storage space.



Side-by-side set

Using the side-by-side set, two appliances can be placed next to each other. The required gap between the appliances is maintained, and they are neatly connected by the cover strip. This ensures tidy installation and avoids any condensation or water between the appliances.

On request

Special locking

To protect the stored products from unwanted access, up to 5 additional special locks are available as accessories for the refrigerators and freezers. This way, different locks can be installed on several appliances so that only the people responsible for a particular appliance have access to it.

Under-worktop freezers



Lock

The appliances are equipped with standard locks. Several appliances can be locked with one key. Additional lock barrels with up to ten different keys are available.



Stacking kit

Where floor space is confined any combination of the GGU(esf) Gastro freezers with fan-assisted cooling is possible with the stacking kit. The advantage: odour and temperature separation on a small footprint. In order to guarantee optimum stability, roller sets must not be fitted to appliances which are installed using a connecting frame. This is only available for individual appliances.



Roller bars

The rollers (diameter 30 mm) make it easy to move the appliance for cleaning. In order to guarantee optimum stability, roller sets must not be fitted to appliances which are installed using a connecting frame. This is only permitted for individual appliances.



Baskets / Baskets short

The plastic-coated wire baskets ensure optimum usage of the interior.



Drawers

The completely enclosed drawers are tough and ideal for storing small frozen food items.





Beverage coolers by Liebherr – quench your thirst for more.

Cool beverages are always in fashion. It is therefore all the more important not only to cool them perfectly but also to place them in the best light. The beverage coolers by Liebherr are specially designed for this. Large glass fronts and room-filling LED lighting provide the perfect setting for your bottles and cans, whetting the appetite for refreshment. Easily height-adjustable and versatile grid shelves allow you to use every centimetre of the appliance.

Brands and goods can be presented effectively by individual branding and design options. The high energy efficiency and extreme longevity of the appliance and their individual components pay off permanently in the overall operating costs. A further plus for sustainability: the use of environmentally friendly refrigerants.

Increase the awareness of your brand.

Whether it is in your individually designed brand look or with special features: Liebherr appliances fulfil virtually every requirement. The broad selection of models and a versatile accessory range make it easy to find the ideal solution for every purpose.

Direct digital printing: How to inspire customers with your brands.

A wide range of possibilities: Direct digital printing allows your advertising message or motif to be printed directly onto the housing. It enables you to expertly draw attention to your company or your brands, whether in the form of a realistic photographic representation of the product, an artistic motif or a perfectly presented company logo. We can also produce in small quantities – completely custom-made. We use the CMYK colour model, the currently standard system for digital four-colour printing.





Closed rear wall

The closed rear wall which is available as an option (depending on the version) makes the appliance ideal for freestanding use. It blends in more harmoniously with its surroundings when installed, and also gives you the option of placing advertising messages across the entire surface of the appliance.

360° presentation

Thanks to the 360° design options, you can communicate creative and effective messages over the entire surface of the appliance, whether with a photo-realistic representation of your product, an artistic motif or a perfectly presented company logo.

Benefits at a glance:

- Visual refinement of the appliances using colour brilliance, high resolution, depth of field and three-dimensional rendition.
- Individual and flexible design for effective advertising messages
- Increase brand awareness and increase turnover
- 180° branding: The design is printed directly onto the surface with an exact fit and over the entire surface, and is guided over the edges of the appliance
- Easy to clean, and resistant to both scratches and UV light
- Available in small quantities
- Resilient branding: neither accidental nor intentional removal is possible
- To protect the design: The appliance is delivered with foil

Putting your branding in the right light



Glass door branding

The design of the glass door can be customised using adhesive labels. These are also available as “non-permanent” labels which can be easily removed at any time, leaving no residue. Alternatively, the screen printing process offers the possibility of applying the motif to the inside of the glass – between two panes of glass. This not only ensures that the print is durable, but also guarantees that finely detailed motifs are implemented correctly and that high quality is maintained for larger quantities.



Individual colour scheme

Design your appliance as you like! The exceptional branding options of direct digital printing allow us to individually customise appliances at the factory in the style specified by the customer.



Label

This widely used technique involves applying the desired subject onto a suitable adhesive label (mostly PVC film), depending on the number of pieces and motif. This is fitted accurately onto the foamed chest or fridge housing.



LED lighting integrated into the glass door

An individual motif can be engraved into the glass door and then illuminated. Only the motif is illuminated, which makes it particularly stand out. The engraving is located between the two insulated glass panes (available with the FKv 50 and FKv 30).



Lenticular methods



3D effect

3D branding

3D branding gives an appliance an extraordinarily attractive appearance and gives creative imagery brand new possibilities. High quality adhesive labels can be printed in 3D using a special method called lenticular printing. We also use different levels and layers of printing on the glazing, which, combined with the right backlighting, produce a 3D effect. This makes every appliance an eye-catcher in its own right and activates the impulse to buy.



Refrigerators



Premium/PremiumPlus



Performance series



Perfection series

Environmental conditions

Temperature stability

Storage safety

Features

Energy consumption

Compliance

Premium/PremiumPlus

FKv/FKUv/FKDv

Performance series

MRFvc/MRFvd/MRFec

Perfection series

MRFvg

CC2	Appliances with foamed door: CC3	Appliances with foamed door: CC3
	Appliances with glass door: CC2	Appliances with glass door: CC2
EN 16902	EN 16902	EN 16902
+1 °C to +15 °C/+2 °C to +12 °C	+2 °C to +9 °C/+1 °C to +15 °C	-2 °C to +15 °C
Class K4	Class K4	Class K4
		Visual and audible alarms
Self-closing door (except FKv)	Self-closing door < 90°	Self-closing door < 90°
Mechanical lock (except FKDv 4513)	Mechanical lock (except MRFec models)	
Analogue thermometer/digital thermometer/ electric control with 7-segment display	Analogue thermometer/digital thermometer	Monochrome display, touch buttons
Analogue control	Analogue control	Commercial grade moulded polystyrol
		Energy management system
	Castors/adjustable feet as accessory	Castors/adjustable feet as accessory
Glass door appliances: LED lighting	Glass door appliances: LED lighting	Glass door appliances: double-sided vertical LED lighting
	MRFvd appliances with foamed door: LED ceiling lighting	Appliances with foamed door: LED ceiling lighting
Bar handle (except FKv)	Recessed grip	Recessed grip
SuperEfficient	SuperEfficient	SuperEfficient
EU directive 2019/2018 – bottle cooler	EU directive 2019/2018 – bottle cooler	EU directive 2019/2018 – bottle cooler
Safety machinery directive – EN 60335	Safety machinery directive – EN 60335	Safety machinery directive – EN 60335

The advantages at a glance

Dynamic cooling system

The dynamic cooling system (with fan) cools freshly stored beverages within a very short amount of time to the optimal drinking temperature and ensures a constant temperature in the interior.

Deep drawn plastic inner liner

The deep drawn plastic inner liner is odour-neutral, very sturdy, long-lasting and offers perfect hygiene due to large, easy to clean corner radii.

Housing made of powder-coated steel sheet

The housing made of powder-coated steel sheet is designed without gaps and therefore extremely robust, impact-resistant and easy to clean. The high drawn side walls can be individually designed according to customer wishes and used for branding purposes.

RoHS and WEEE conformity

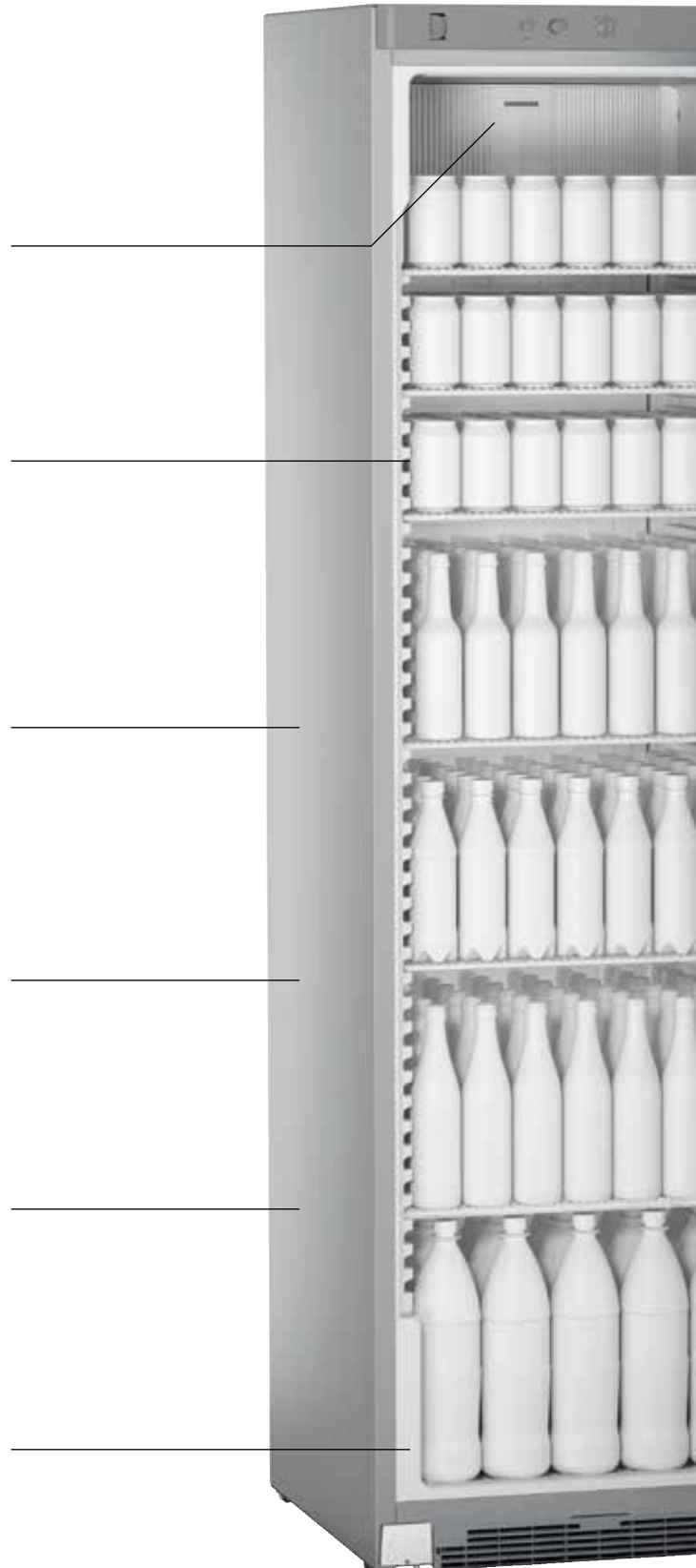
RoHS and WEEE conformity due to the use of environmentally friendly materials in combination with optimal recyclability.

PFC-free coolant

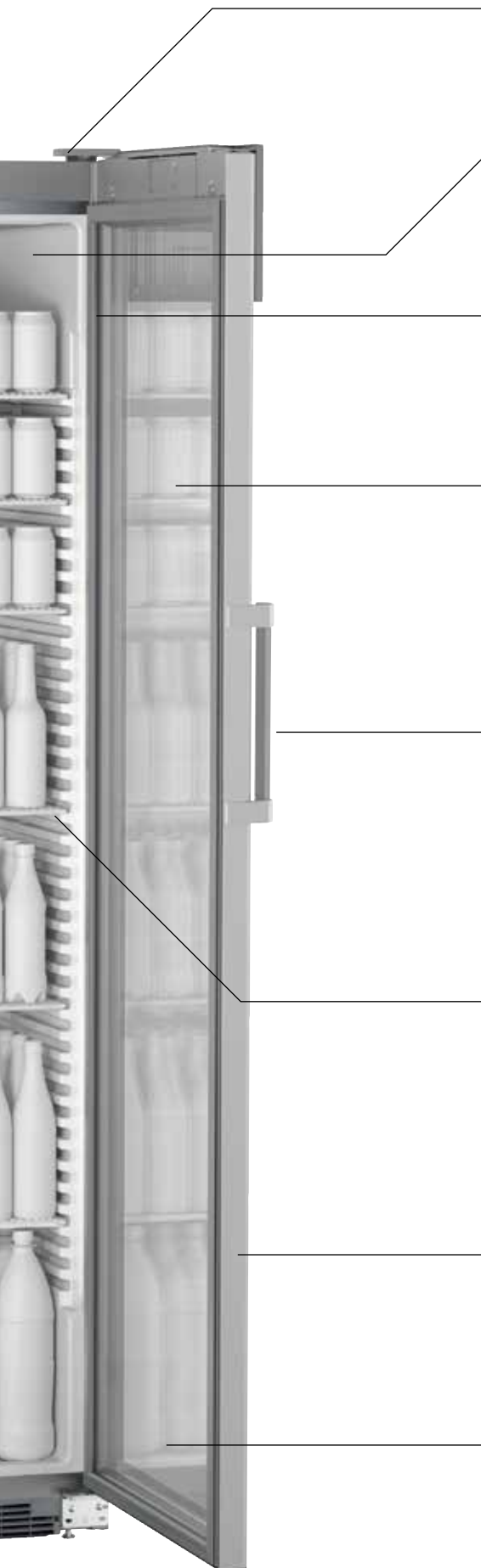
The natural and PFC-free refrigerant R 600a is environmentally friendly and, in combination with powerful compressors, very energy efficient.

Highly dampening insulation

The highly dampening insulation reduces the energy consumption and ensures a constant temperature in the interior.



FKDv 4513 Premium



Interchangeable door hinge

The interchangeable door hinge enables adjustment to an installation location.

Variable temperature range

The variable temperature zone enables individual temperature control.

Exchangeable magnetic seal

The doors are designed with an easily exchangeable magnetic seal.

Fan stop function

When the door is opened, the automatic fan stop function minimises the outflow of cold air.



Robust handle

The robust handle enables fast access and guarantees stability even during frequent door openings.

Stable grid shelves with pull-out stop

The stable grid shelves are easy to adjust and make the interior highly variable. It can be adjusted to different sizes of containers or bottles to ensure best possible use. The pull-out stop in the middle of the grid shelves ensures your products are stored safely. It is not possible to accidentally pull them out. The strengthening bar on the grid shelf also protects the goods and marks where the goods are placed.

Design and functionality

Design and functionality combined in a cool way: The HardLine design with contour edges on the sides fulfils the highest expectations in terms of elegance.

Glass door

The insulating glass door offers a perfect view, ensures optimal energy efficiency and contributes to effective goods presentation.

Quality right down to the smallest detail

Display fridges by Liebherr offer ideal prerequisites for an effective and sales-promoting goods presentation. From the LED display to the switchable LED interior light and the variable interior, these applications offer several possibilities to present your stored products perfectly. The display can be individually designed by attractive branding variants. Height-adjustable grids enable easy adaptation to different bottle and container sizes. The dynamic cooling system contributes to the fast cooling – and therefore to quick saleability.



Attractive illuminated display

Liebherr offers attractive possibilities to draw attention to appliances, goods and your brand. Depending on needs, the display field can be adapted by the customer. Four individual display variants support you in this:

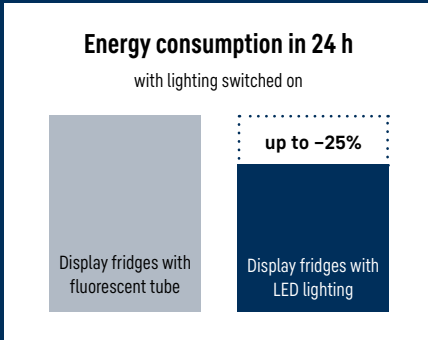
The transparent LightGuideDisplay installed on the inside of the door (FKDv 4523) can be partially illuminated. This enables a clear view of the products while drawing attention to your brand.

The LightGuide display (FKDv 4513) attached to the outside of the door and illuminated over the entire surface puts your brand centre stage and draws attention to it. No separate mains supply is necessary for the lighting.



The door sticker attached to the interior of the door (FKDv 4503) is impressively displayed by the ceiling lighting.

The LED-backlit display (FKDv 4203/4211/4213) draws attention to your brand.



Best energy efficiency, low operating costs

All display fridges are equipped with innovative LED lighting. When the lighting is switched on, the highly efficient LED lighting reduces overall energy consumption by 13 to 25 percent compared with comparable models using fluorescent tubes. The operating costs are considerably reduced – and the higher purchasing price of display fridges with LED lighting pays off within a very short time.

Special equipment as a customer variant: EMS control panel

The EMS system installed as standard in the model FKDv 4523 (available as special equipment in other display fridges) is the convenient technology for more energy efficiency. The control system detects door opening cycles, for example, to which the cooling technology reacts by providing needs-based cooling. In combination with a light switch-off, this leads to considerable energy savings.

Optimised facing

The raised insulating glass door enables a clear view inside the appliance and an optimal goods presentation. In addition, there is considerably more available volume. The special glass ensures good insulation and supports low energy consumption (FKDv 4503/4513/4523).

LED interior light

The separately switchable LED interior lighting is energy efficient and puts products centre stage for optimal goods presentation. An overview of our variants:



The LED strip lighting on both sides optimally shows off the goods by means of light accents from two sides. The interior illumination underscores the exclusiveness of your products (FKDv 4523).



The LED strip lighting on one side enables a perfect goods presentation (FKDv 4211/4213/4503/4513).



The space-saving integrated LED ceiling lighting provides an accentuated illumination of the interior from above (FKDv 4203/4503).

Display fridges with dynamic cooling



SPECIAL
ORDER

FKDv 4523

PremiumPlus



SPECIAL
ORDER

FKDv 4523 ver. 875

PremiumPlus

Gross / net capacity	441 / 422 litre	441 / 422 litre
Exterior dimensions in mm (w / d / h)	600 / 696 / 2027	600 / 696 / 2027
Interior dimensions in mm (w / d / h)	456 / 516 / 1804	456 / 516 / 1804
Energy efficiency class ¹		
Energy consumption in 365 days ²	687 kWh	680 kWh
Climate class (energy directive)	CC2	CC2
Temperature class (energy directive)	K4	K4
Ambient temperature range ³	+10 °C to +40 °C	+10 °C to +40 °C
Refrigerant	R 600a	R 600a
Sound power level	52 dB(A)	52 dB(A)
Voltage / frequency	220 - 240V~ / 50 Hz	220 - 240V~ / 50 Hz
Connection rating	1.5 A	1.5 A
Heat output	742 kJ/h	742 kJ/h
Cooling system / Defrost	forced-air / automatic	forced-air / automatic
Temperature range	+2 °C to +12 °C	+2 °C to +12 °C
External cabinet finish	steel / black	steel / black
Door material / colour	Insulated glass door with aluminium frame / black	Insulated glass door with aluminium frame / black
Internal liner material	moulded polystyrol (silver)	moulded polystyrol (silver)
Type of control	LED 7-segment display with buttons	rotary control
Temperature display	internal digital	internal analogue
Interior light	LED light column both sides, separate connection	LED light column both sides, separate connection
Adjustable shelves / Shelf material	6 / wire shelves plastic-coated	6 / wire shelves plastic-coated
Loading capacity 0.5L PET / facings 0.5L PET	304 / 7	304 / 7
Loading capacity 0.33L can / facings 0.33L can	608 / 7	608 / 7
Shelf loading	45 kg	45 kg
Handle	heavy-duty aluminium handle	heavy-duty aluminium handle
Type of lock	mechanical	mechanical
Self-closing door / Door hinges	yes / right, reversible on site	yes / right, reversible on site
Gross / net weight	93 / 85.6 kg	91 / 84 kg
Also available in white as		
Accessories		
Grid shelf in grey / black / white	7113221 / 7113235 / 7113308	7113221 / 7113235 / 7113308
Base grid in grey / black / white	7113243 / 7113239 / 7113312	7113243 / 7113239 / 7113312
Wooden grid	7114000	7114000
Perforated metal shelf in grey	9029023	9029023
Flexible scanner rail for shelves	7435208	7435208
Gravity feed shelf on telescopic runners	9007659	9007659
Gravity feed shelf without runners	9007045	9007045
Protection bracket	7790671	7790671
Castors for the protection bracket	7790761	7790761
Lock / Additional lock barrel		
Side-by-Side set	9902462	9902462

Display fridges with dynamic cooling



SPECIAL ORDER

FKDv 4513

Premium

441 / 422 litre

600 / 696 / 2027

456 / 516 / 1804



580 kWh

CC2

K4

+10°C to +40°C

R 600a

52 dB(A)

220 - 240V~ / 50 Hz

1.5 A

742 kJ/h

forced-air / automatic

+2°C to +12°C

steel / grey

Insulated glass door with aluminium frame /

grey

commercial grade moulded polystyrol

rotary control

internal analogue

LED strip lighting, right,

separate connection

6 / wire shelves plastic-coated

304 / 7

608 / 7

45 kg

heavy-duty aluminium handle

mechanically retrofittable

yes / right, reversible on site

92 / 86 kg

7113221 / 7113235 / 7113308

7113243 / 7113239 / 7113312

7114000

9029023

7435208

9007659

9007045

7790671

7790761

9590067



SPECIAL ORDER

FKDv 4213 vers. 744

Comfort

403 / 385 litre

600 / 687 / 2010

456 / 516 / 1660



547 kWh

CC2

K4

+10°C to +40°C

R 600a

52 dB(A)

220 - 240V~ / 50 Hz

1.5 A

634 kJ/h

forced-air / automatic

+2°C to +12°C

steel / black

Insulated glass door with plastic frame /

black

moulded polystyrol (silver)

rotary control

internal analogue

LED strip lighting, right,

separate connection

5 / wire shelves plastic-coated

256 / 7

512 / 7

45 kg

ergonomic slimline handle

mechanical

yes / right, reversible on site

85 / 79 kg

FKDv 4213

7113221 / 7113235 / 7113308

7113243 / 7113239 / 7113312

7114000

9029023

7435208

9007659

9007045

7790603

7790761

on request

9902275



FKDv 4203

Comfort

403 / 385 litre

600 / 687 / 2010

456 / 516 / 1660



527 kWh

CC2

K4

+10°C to +40°C

R 600a

52 dB(A)

220 - 240V~ / 50 Hz

1.5 A

634 kJ/h

forced-air / automatic

+2°C to +12°C

steel / white

Insulated glass door with plastic frame /

white

commercial grade moulded polystyrol

rotary control

internal analogue

LED ceiling light strip with separate switch

5 / wire shelves plastic-coated

256 / 7

512 / 7

45 kg

ergonomic slimline handle

mechanical

yes / right, reversible on site

85 / 78 kg

7113221 / 7113235 / 7113308

7113243 / 7113239 / 7113312

7114000

9029023

7435208

9007659

9007045

7790603

7790761

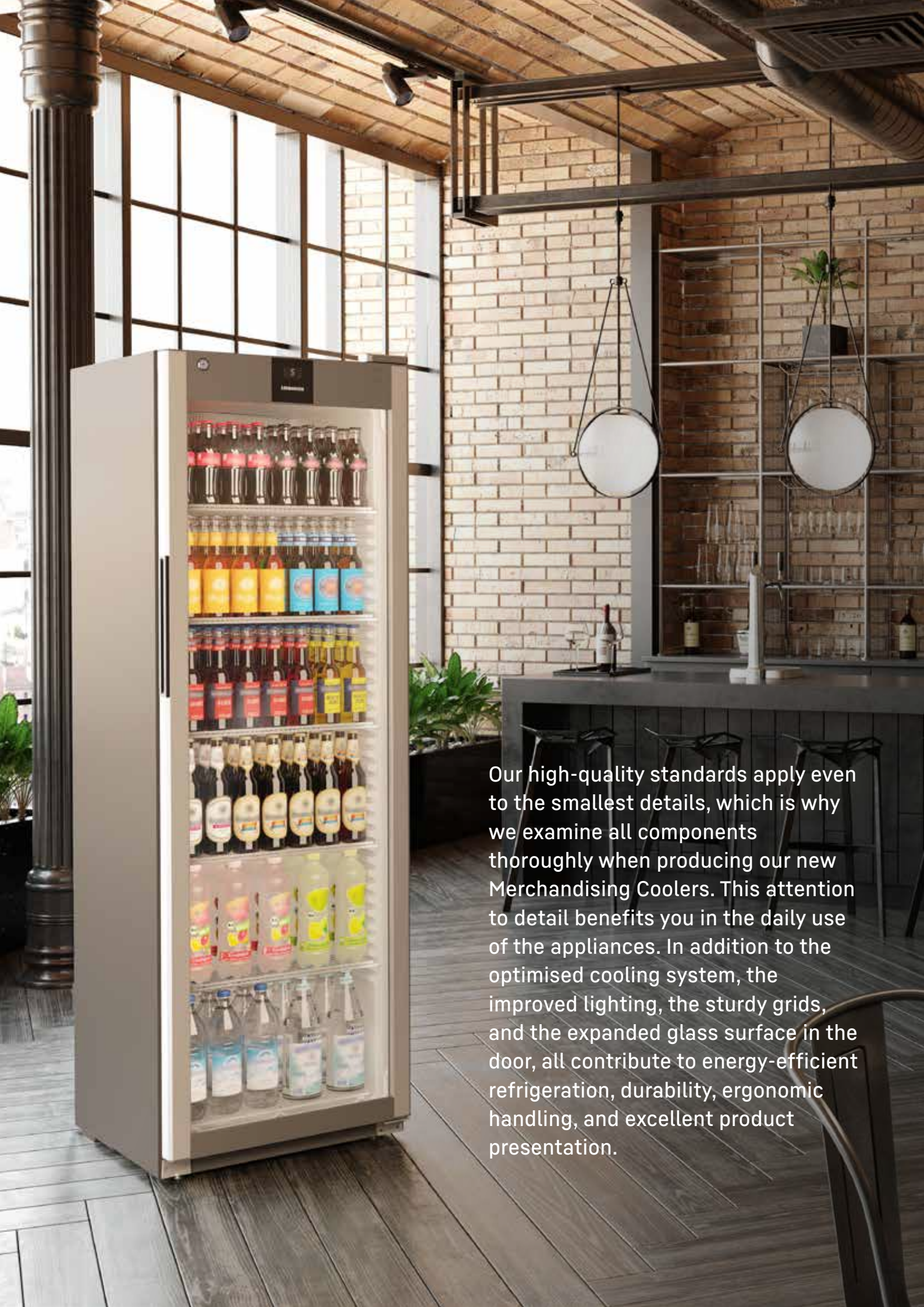
on request

9902275

1 As per EU Regulation 2019/2018.

2 Measured as per EN 16902:2016.

3 Indicates the ambient temperature at which the appliance can be safely operated.



Our high-quality standards apply even to the smallest details, which is why we examine all components thoroughly when producing our new Merchandising Coolers. This attention to detail benefits you in the daily use of the appliances. In addition to the optimised cooling system, the improved lighting, the sturdy grids, and the expanded glass surface in the door, all contribute to energy-efficient refrigeration, durability, ergonomic handling, and excellent product presentation.

Quality right down to the smallest detail



Product presentation

Impressive staging: Now you have a better view of cold drinks because the larger glass surface of the door design displays the products to the customer to grab their attention. And in combination with the energy-saving LED lighting technology, which creates an optimally illuminated interior, it provides the perfect stage for bottles and containers – encouraging customers to reach for the products.



Dynamic cooling system

Efficient: The dynamic cooling system with fan rapidly cools the freshly stored products and ensures an almost constant temperature distribution in the interior. When the door is opened, the automatic fan stop function minimises the outflow of cold air and therefore helps to save energy.



Lighting

Recognisable: The new lighting system comprising an energy-saving LED ceiling light and vertical LED light column (also two light columns on the left and right as an option) means that the interior is optimally illuminated and you have the best possible view of your products.



Ergonomics

Very practical: The doors can be very easily opened using the ergonomic recessed grip. Using the height-adjustable storage shelves, you can easily adjust the interior to suit the size of the bottle or container. This invites customers to reach for the product and promotes sales. For ergonomic handling, the door also has a self-closing mechanism which supports energy-efficient operation.



Improved grid shelves

Corrosion-free grid shelves made of coated steel guarantee a secure hold, constant air circulation and good temperature stability. A pull-out stop prevents them from accidentally sliding out.



Self-closing door/recessed grip/safety glass


To make loading, unloading and cleaning easier, the appliance door stays open if opened by more than 90°. If the opening angle is less than 90°, it closes automatically for safety. The tempered and shatter-proof safety glass ensures safety and stability.

Fridges with glass door and dynamic cooling



MRFvd 5511

Performance

Gross / net capacity	569 / 432 litre
Exterior dimensions in mm (w / d / h)	747 / 769 / 1684
Interior dimensions in mm (w / d / h)	625 / 536 / 1459
Energy efficiency class ¹	
Energy consumption in 365 days ²	535 kWh
Climate class (energy directive)	CC2
Temperature class (energy directive)	K4
Ambient temperature range ³	+10 °C to +40 °C
Refrigerant	R 600a
Sound power level	50 dB(A)
Voltage / frequency	220 - 240V~ / 50 Hz
Connection rating	2.0 A
Cooling system / Defrost	forced-air / automatic
Temperature range	+1 °C to +15 °C
External cabinet finish	steel / grey
Door material / colour	Insulated glass door with aluminium frame / silver
Internal liner material	commercial grade moulded polystyrol
Type of control	rotary control with digital thermometer
Temperature display	external digital
Interior light	vertical LED light strip recessed in left wall with separate switch
Adjustable shelves / Shelf material	4 / wire shelves plastic-coated
Loading capacity 0.5L PET / facings 0.5L PET	354 / 9
Loading capacity 0.33L can / facings 0.33L can	708 / 9
Shelf loading	60 kg
Handle	recessed grip
Type of lock	mechanical
Self-closing door / Door hinges	yes / right, reversible on site
Gross / net weight	99 / 92 kg
Also available as	
Accessories	7113278 / 7113236 / 7113310
Grid shelf in grey / black / white	7113280 / 7113240 / 7113314
Base grid in grey / black / white	
Gravity feed shelf: telescopic / fixed	7435210
Flexible scanner rail for shelves	
Wooden grid	
Perforated metal shelf in grey	9086926
Optional castor set	9086924
Set of adjustable legs	7790513
Protection bracket	7790761
Castors for the protection bracket	on request
Additional lock barrels	9017742 / -
Side-by-Side set in grey / black	

Fridges with glass door and dynamic cooling



MRFvd 4011

Performance

400 / 286 litre

597 / 654 / 1884

475 / 423 / 1659



566 kWh

CC2

K4

+10 °C to +40 °C

R 600a

50 dB(A)

220 - 240V~ / 50 Hz

2.0 A

forced-air / automatic

+1 °C to +15 °C

steel / grey

Insulated glass door with aluminium frame / silver

commercial grade moulded polystyrol

rotary control with digital thermometer

external digital

vertical LED light strip recessed in left wall with separate switch

5 / wire shelves plastic-coated

253 / 7

506 / 7

45 kg

recessed grip

mechanical

yes / right, reversible on site

84 / 78 kg

MRFvd 4011 version 003 Half Reload

7113221 / 7113235 / 7113308

7113243 / 7113239 / 7113312

9007659 / 9007045

7435208

7114000

9029023

7790512

7790761

on request

9006973 / -



SPECIAL ORDER

MRFvd 4011 version 744

Performance

400 / 286 litre

597 / 654 / 1884

475 / 423 / 1659



566 kWh

CC2

K4

+10 °C to +40 °C

R 600a

50 dB(A)

220 - 240V~ / 50 Hz

2.0 A

forced-air / automatic

+1 °C to +15 °C

steel / black

Insulated glass door with aluminium frame / black

moulded polystyrol (silver)

rotary control with digital thermometer

external digital

vertical LED light strip recessed in left wall with separate switch

5 / wire shelves plastic-coated

253 / 7

506 / 7

45 kg

recessed grip

mechanical

yes / right, reversible on site

85 / 79 kg

7113221 / 7113235 / 7113308

7113243 / 7113239 / 7113312

9007659 / 9007045

7435208

7114000

9029023

7790512

7790761

on request

- / 9017744

1 As per EU Regulation 2019/2018.

2 Measured as per EN 16902:2016.

3 Indicates the ambient temperature at which the appliance can be safely operated.



Our catalogue programme

You will find Liebherr commercial appliances where service and advice are taken seriously: In a specialist shop!

There is an overview of other Liebherr appliances in our catalogue of fridges and freezers for professional use. Available in stores or to download at home.liebherr.com.



BIM data now available

The cooperation between Liebherr-Hausgeräte and Specifi® gives planners and dealers worldwide access to a digital Liebherr-Hausgeräte library with BIM models for the Food Service and Scientific areas. Compatible with AutoCAD® and Revit. home.liebherr.com/bimdata



For more information about our technical specifications, go to: home.liebherr.com/foodservice

Subject to technical changes, errors and different images and text.
Colours may differ due to media used. For the latest available data go to home.liebherr.com.
Printed in Germany by mediaprint solutions GmbH, 7900 787-06/01.2025



home.liebherr.com

