
42 KR.1

EN 14439:2009 – C25
Technical Data

LIEBHERR

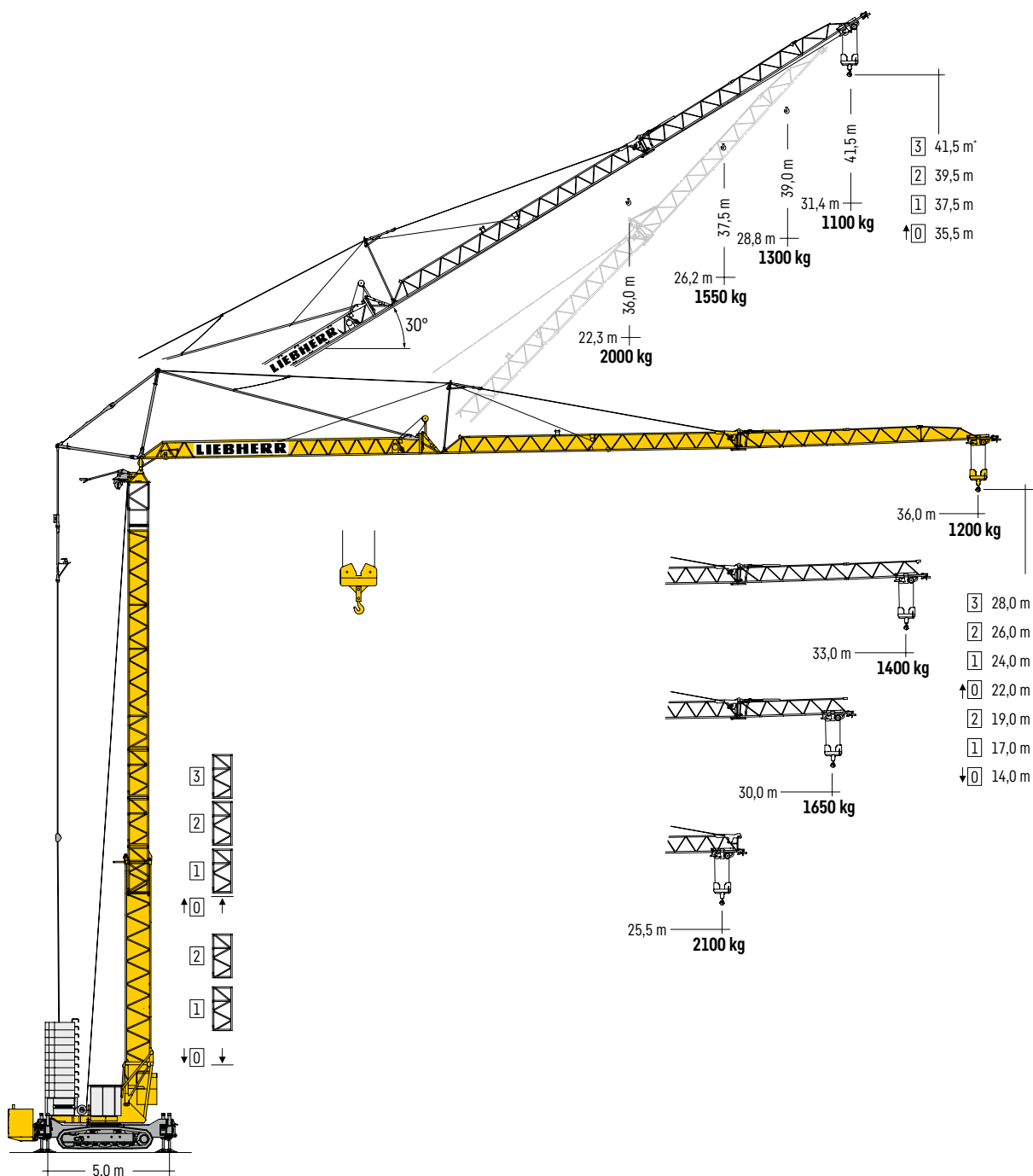
Tower Cranes

CE | UK
CA

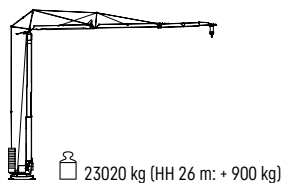
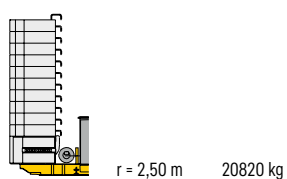
42 KR.1

Kranbetrieb und Transport · Crane operation and transport Exploitation de la grue et transport · Funzionamento della gru e trasporto Accionamiento de grúa y transporte · Operação e transporte de guindastes Эксплуатация крана и транспортировка	04
Gewichte · Weights · Poids · Pesi · Pesos · Pesos · Масса.....	04
Ausladung und Tragfähigkeit · Radius and capacity · Portée et charge Sbraccio e portata · Alcances y cargas · Alcance e capacidade de carga Вылет и грузоподъемность.....	06
Antriebe · Driving units · Mécanismes d'entraînement · Meccanismi Mecanismos · Mecanismos · Приводы	07
Aufstellvorgang · Erection procedure · Déroulement de montage Procedimento di montaggio · Procedimiento de montaje · Sistema de montagem Процесс развертывания	07
Geländegängigkeit · Off-road capability · Aptitude en tout terrain Idoneità al fuoristrada · Aptitud de marcha sobre toda clase de terrenos Capacidade de funcionamento sobre todo o tipo de terrenos Повышенная проходимость	08
Kolli-Liste · Packing List · Liste de colisage · Lista dei colli · Lista de contenido Lista de embalagem · Упаковочный лист	09

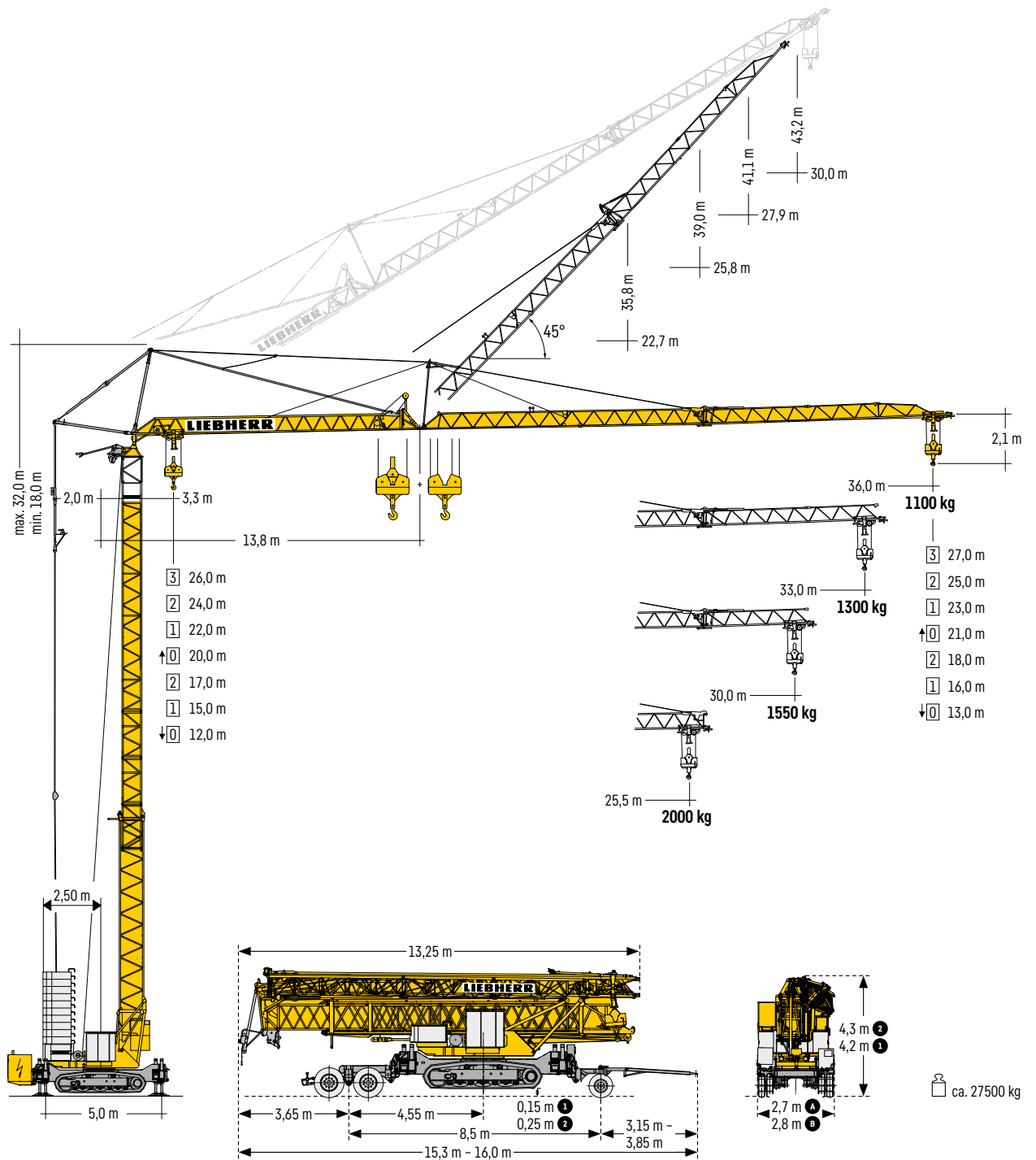
Kranbetrieb und Transport - Crane operation and transport - Exploitation de la grue et transport - Funzionamento della gru e trasporto - Accionamiento de grúa y transporte - Operação e transporte de guindastes - Эксплуатация крана и транспортировка



Gewichte - Weights - Poids - Pesi - Pesos - Pesos - Macca



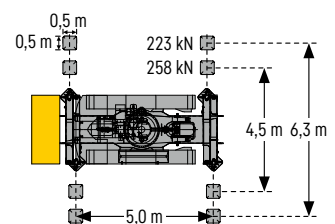
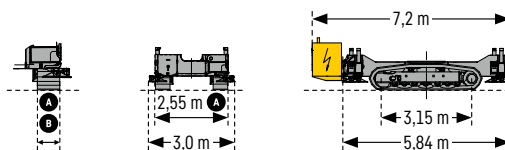
* Siehe Betriebsanleitung. - See instruction manual. - Voir manuel de service. - Vedi manuale d'istruzione. - Ver manual de instrucción. - Ver manual de instruções. - См. инструкцию по эксплуатации.



Kettenbreite
Chain width
Largeur de chaîne
Larghezza cingoli
Anchura de cadena
Comprimento dos rastros
Ширина гусеницы

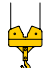
A = 0,5 m
B = 0,6 m

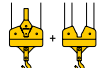
1 0,15 m \approx 4,2 m
2 0,25 m \approx 4,3 m

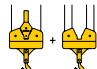


Ausladung und Tragfähigkeit · Radius and capacity · Portée et charge · Sbraccio e portata
 Alcances y cargas · Alcance e capacidade de carga · Вылет и грузоподъемность

Auslegerstellung 0° · Jib position 0° · Position de flèche 0° · Posizione del braccio 0°
 Posición de la pluma 0° · Posição da lança 0° · Положение стрелы 0°

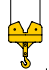
		m																				
m		kg	16,0	18,0	20,0	21,0	22,0	23,0	24,0	25,0	25,5	26,0	27,0	28,0	29,0	30,0	31,0	32,0	33,0	34,0	35,0	36,0
36,0	3,3 - 19,40	2500	2500	2410	2280	2160	2050	1950	1860	1810	1770	1690	1620	1560	1490	1440	1380	1330	1290	1240		1200
33,0	3,3 - 20,18	2500	2500		2390	2260	2150	2040	1950	1900	1860	1780	1700	1630	1570	1510	1450	1400				
30,0	3,3 - 21,04	2500	2500			2370	2250	2140	2040	2000	1950	1870	1790	1720	1650							
25,5	3,3 - 21,95	2500	2500			2490	2370	2250	2150	2100												

		m																					
m		kg	13,0	14,0	16,0	18,0	20,0	23,0	24,0	25,0	25,5	26,0	27,0	28,0	29,0	30,0	31,0	32,0	33,0	34,0	35,0	36,0	
36,0	3,3 - 22,56	2000	2000				1950	1850	1760	1720	1680	1600	1530	1460	1400	1340	1290	1230	1190	1140		1100	
33,0	3,3 - 23,46	2000	2000					1950	1850	1800	1760	1680	1600	1530	1470	1410	1350	1300					
30,0	3,3 - 24,45	2000	2000						1950	1900	1850	1770	1690	1620	1550								
25,5	3,3 - 25,50	2000	2000																				

		m																				
m		kg	13,0	14,0	16,0	18,0	20,0	23,0	24,0	25,0	25,5	26,0	27,0	28,0	29,0	30,0	31,0	32,0	33,0	34,0	35,0	36,0
36,0	3,3 - 12,77	4000	3910	3580	3040	2630	2320	1950	1850	1760	1710	1670	1600	1520	1460	1400	1340	1280	1230	1190	1140	1100
33,0	3,3 - 13,25	4000	4000	3740	3180	2760	2430	2050	1940	1850	1800	1760	1680	1600	1530	1470	1410	1350	1300			
30,0	3,3 - 13,79	4000	4000	3930	3340	2900	2550	2150	2050	1950	1900	1850	1770	1690	1620	1550						
25,5	3,3 - 14,36	4000	4000	3510	3050	2690	2270	2150	2050	2000												

► kg

Auslegerstellung 30° · Jib position 30° · Position de flèche 30° · Posizione del braccio 30°
 Posición de la pluma 30° · Posição da lança 30° · Положение стрелы 30°

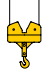
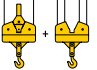
		m																
m		kg	16,0	18,0	20,0	22,3	23,0	24,0	25,0	26,0	26,2	27,0	28,0	28,8	29,0	30,0	31,0	31,4
36,0	3,0 - 15,91	2500	2480	2160	1900	1670	1610	1530	1450	1390	1370	1320	1270	1220	1210	1160	1120	1100
33,0	3,0 - 16,67	2500	2500	2280	2010	1770	1700	1620	1540	1470	1460	1400	1340	1300				
30,0	3,0 - 17,51	2500	2500	2420	2140	1880	1810	1720	1640	1560	1550							
25,5	3,0 - 18,45	2500	2500		2270	2000												


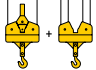
► kg






Antriebe · Driving units · Mécanismes d'entraînement · Meccanismi
Mecanismos · Mecanismos · Приводы

3 ↑ ↓ **11 kW FU**

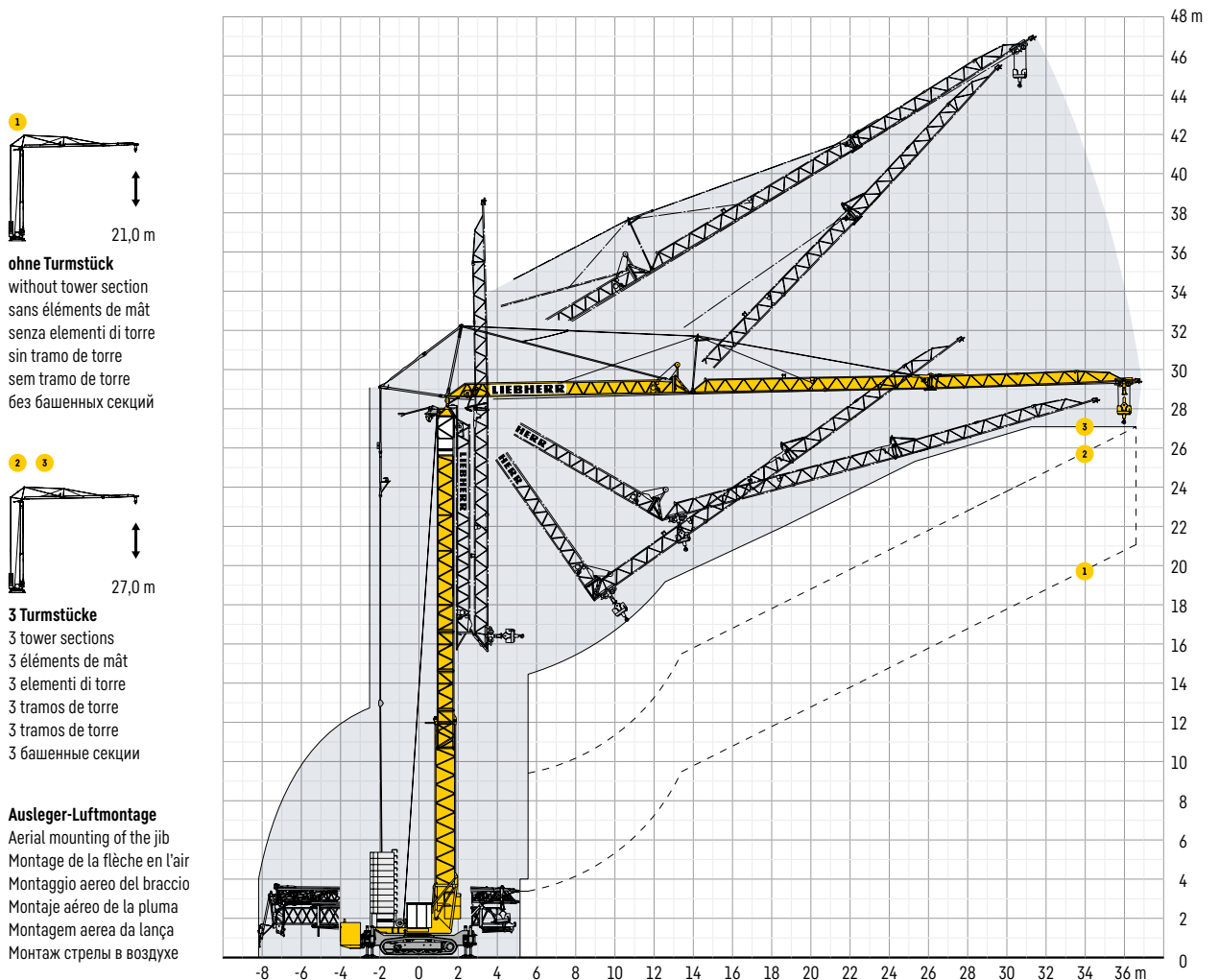
BGL

Stufe Step Cran Marcia Velocidad Velocidade Передача					
		kg	m/min	kg	m/min
1		2500	4,9	2000	4,9
				4000	2,5
2		2500	24,7	2000	24,7
				4000	12,3
3		1300	41,9	1300	41,9
				2600	20,9
4		1000	53,3	1000	53,3
				2000	26,6




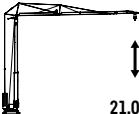
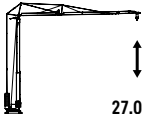
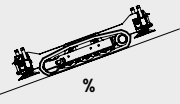
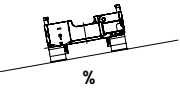
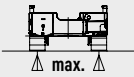
	C.0.03.0045		C.0.03.0045
--	-------------	---	-------------

				
0 ↔ 0,9 U/min · st./min · tr./min 3,0 kW FU	20 m/min 1,3 kW	40 m/min 2,3 kW	25 m/min 2 x 1,3 kW	0 - 45° ca. 60 sec. 1,5 kW
				400 - 440 V
				50 - 60 Hz
				16,0 kVA (FU)

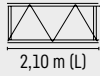
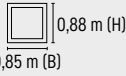
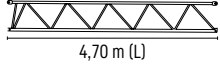
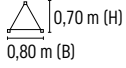
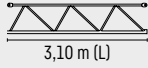
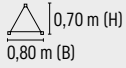
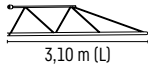
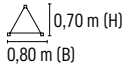
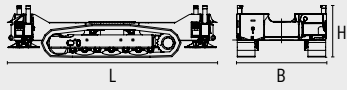
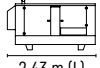
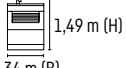
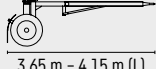
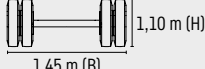

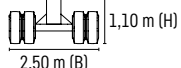
Aufstellvorgang · Erection procedure · Déroulement de montage · Procedimento di montaggio
Procedimiento de montaje · Sistema de montagem · Процесс развертывания



Geländegängigkeit - Off-road capability - Aptitude en tout terrain - Idoneità al fuoristrada
 Aptitud de marcha sobre toda clase de terrenos - Capacidade de funcionamento sobre todo
 o tipo de terrenos - Повышенная проходимость

					
			13,0 m	21,0 m	27,0 m
 %	30 %	25 %	15 %	10 %	7 %
 %	15 %	15 %	8 %	7 %	3 %
 max.	ca. 14 N/cm ²	ca. 25 N/cm ²	ca. 25 N/cm ²	ca. 25 N/cm ²	ca. 25 N/cm ²
V _{max.}	25 m/min	10 m/min	10 m/min	10 m/min	10 m/min

Kolli-Liste - Packing List - Liste de colisage - Lista dei colli - Lista de contenido Lista de embalagem - Упаковочный лист

P ₁	A ₁	Beschreibung - Description - Description - Descrizione - Descripción - Descrição - Описание				
1	3	Turmstück - Tower section - Élément de mât - Elemento di torre Tramo torre - Torre - Башенная секция			0,85 m (B)	0,88 m (H)
			2,10 m (L)			350 kg
2	1	Ausleger-Verlängerung 25,5 m - 30,0 m - Jib extension Rallonge de la flèche - Elemento estensione braccio Prolongación de pluma - Extensão da lança - Удлинение стрелы			0,70 m (H)	0,80 m (B)
			4,70 m (L)			240 kg
3	1	Ausleger-Verlängerung 30,0 m - 33,0 m - Jib extension Rallonge de la flèche - Elemento estensione braccio Prolongación de pluma - Extensão da lança - Удлинение стрелы			0,70 m (H)	0,80 m (B)
			3,10 m (L)			90 kg
4	1	Ausleger-Verlängerung 33,0 m - 36,0 m - Jib extension Rallonge de la flèche - Elemento estensione braccio Prolongación de pluma - Extensão da lança - Удлинение стрелы			0,70 m (H)	0,80 m (B)
			3,10 m (L)			70 kg
5	1	Raupenunterwagen - Crawler undercarriage Châssis à chenilles - Carro cingolato - Carro sobre raíles Carro de lagarta - Опорная рама на гусеничном шасси				
			L (m)	B (m)	H (m)	kg
			5,84	2,55 2,65	1,46	12000
6	1	Stromgenerator mit Konsole - Current generator with bracket Générateur de courant avec semelle - Generatore di corrente con supporto Generador de corriente con consola - Gerador de corrente de consola Генераторный агрегат с кронштейном			1,49 m (H)	1,34 m (B)
		60 kVA	2,43 m (L)			1550 kg
7	1	Transportachse vorne - Road transport axle front Essieux de transport avant - Asse di trasporto anteriore Eje delantero para transporte - Eixo de transporte dianteiro Транспортировочная ось, передняя			1,10 m (H)	1,45 m (B)
		Tra 100 KY 6 A	3,65 m - 4,15 m (L)			920 kg
8	1	Transportachse hinten - Road transport axle behind Essieux de transport arrière - Asse di trasporto posteriore Eje trasero para transporte - Eixo de transporte traseiro Транспортировочная ось, задняя			1,10 m (H)	2,50 m (B)
		Tra 204 GZ 1	2,50 m (L)			1900 kg
9	1	Kiste mit Seilen und Kleinteilen - Case with ropes and small parts - Caisse avec câbles et pièces détachées - Cassa con funi e accessori - Caja con cables y piezas sueltas Caixa contendo cabos e acessórios - Ящик с мелкими деталями и с канатами				
			L (m)	B (m)	H (m)	kg
			1,00	0,80	1,00	450

Sämtliche Angaben erfolgen ohne Gewähr.

This information is supplied without liability.

Ces renseignements sont sans garantie.

Tutte le indicazioni fornite senza garanzia.

Declinamos toda responsabilidad derivada de la información proporcionada.

Declinamos qualquer responsabilidade quanto à informação fornecida.

Все данные указаны без обязательств.

Änderungen vorbehalten!

Subject to technical modifications!

Sous réserves de modifications !

Con riserva di modifiche!

¡Sujeto a modificaciones sin previo aviso!

Sujeto a modificações!

С правом внесения изменений!