

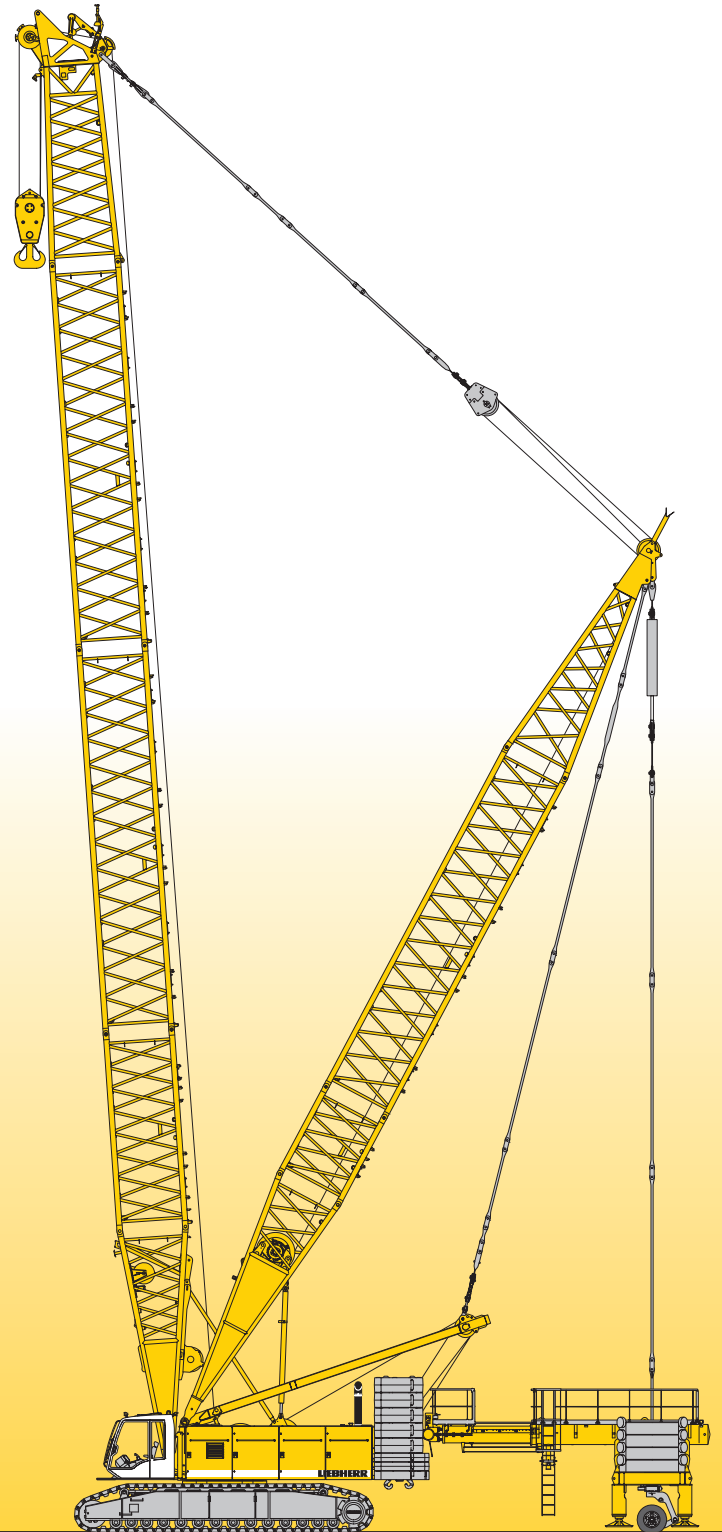
Datos Técnicos

Grúa de celosía sobre cadenas

LR 1280

Litronic®

Con equipo Derrick

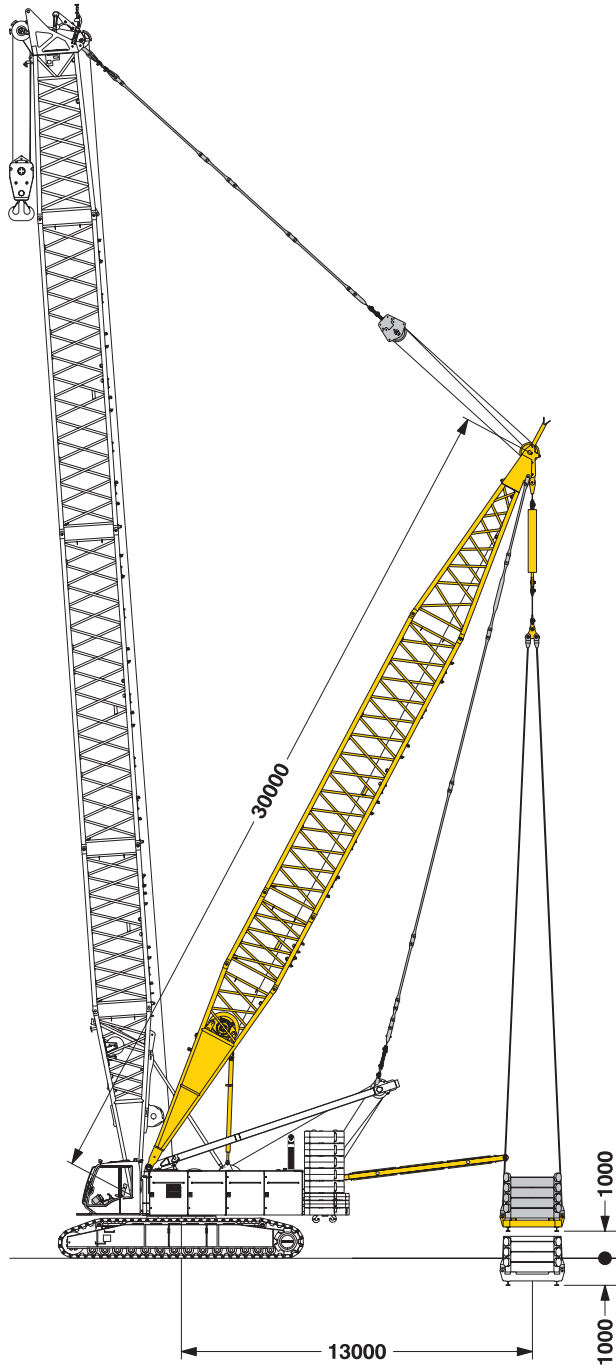


LIEBHERR

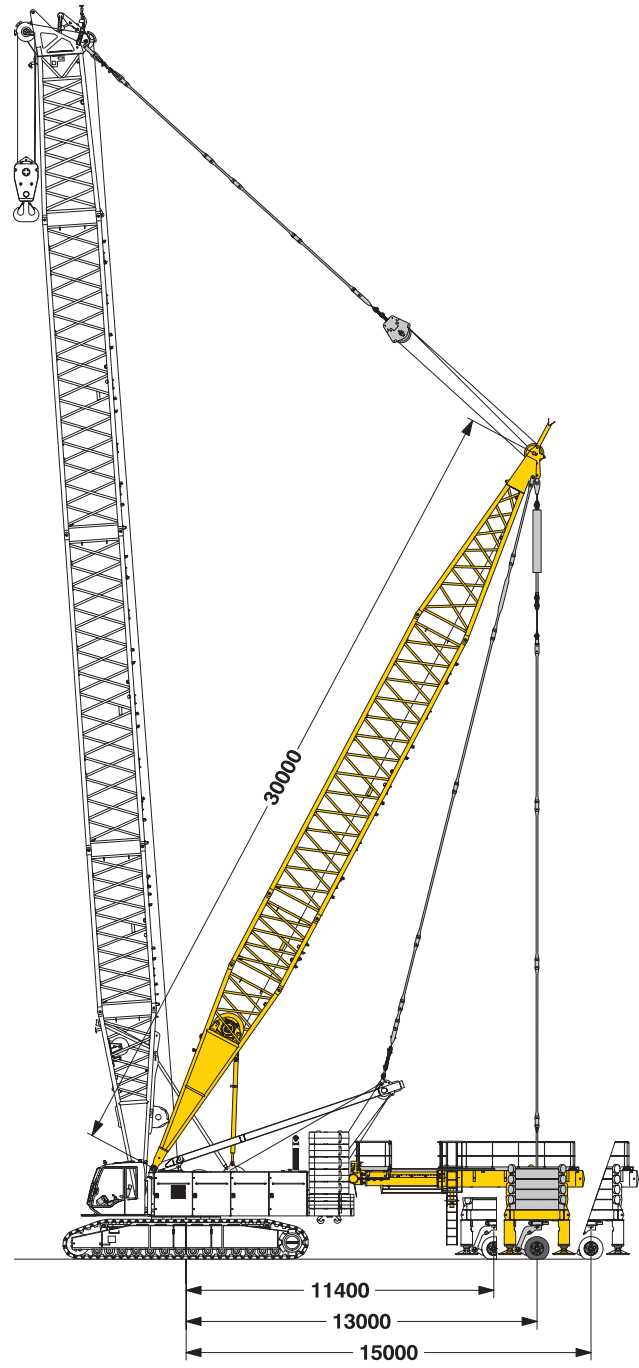
Dimensiones

Máquina base con equipo Derrick

Equipo Derrick
con contrapeso flotante

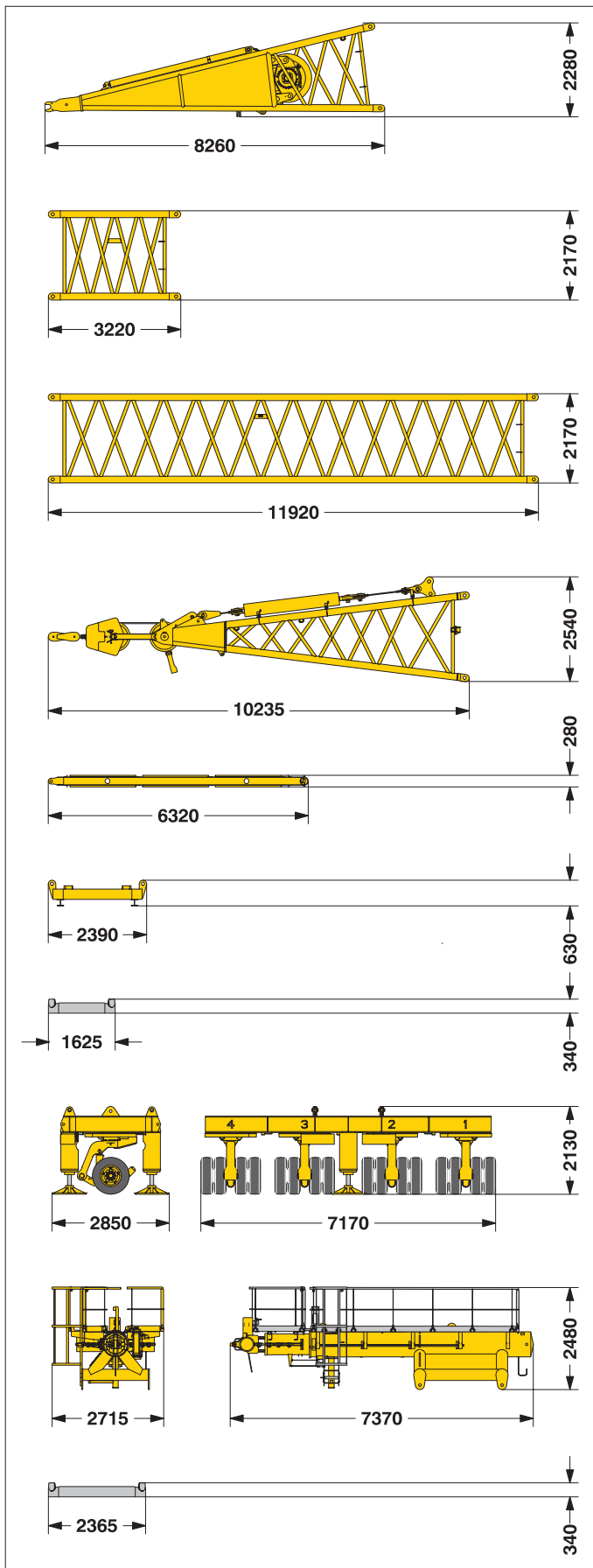


Equipo Derrick
con carro de contrapesos



Dimensiones y pesos de transporte

Máquina base y pluma (N° 2220.xx)



*) Incluye tirantes

Pie de pluma Derrick (N° 2220.24)

Ancho	mm	2420
Peso	kg	5885

Tramo de pluma (N° 2220.24) **3 m**

Ancho	mm	2420
Peso*	kg	1130

Tramo de pluma (N° 2220.22) **11.7 m**

Ancho	mm	2420
Peso*	kg	2885

Cabeza Derrick (N° 2220.22)

Ancho	mm	2420
Peso	kg	5200

Distanciador

Ancho	mm	2470
Peso	kg	495

Marco de contrapeso

Ancho	mm	5020
Peso*	kg	15835

Placa de contrapeso (contrapeso flotante)

Ancho	mm	1625
Peso	kg	5010

Carro de contrapesos

Ancho	mm	2850
Peso*	kg	13155

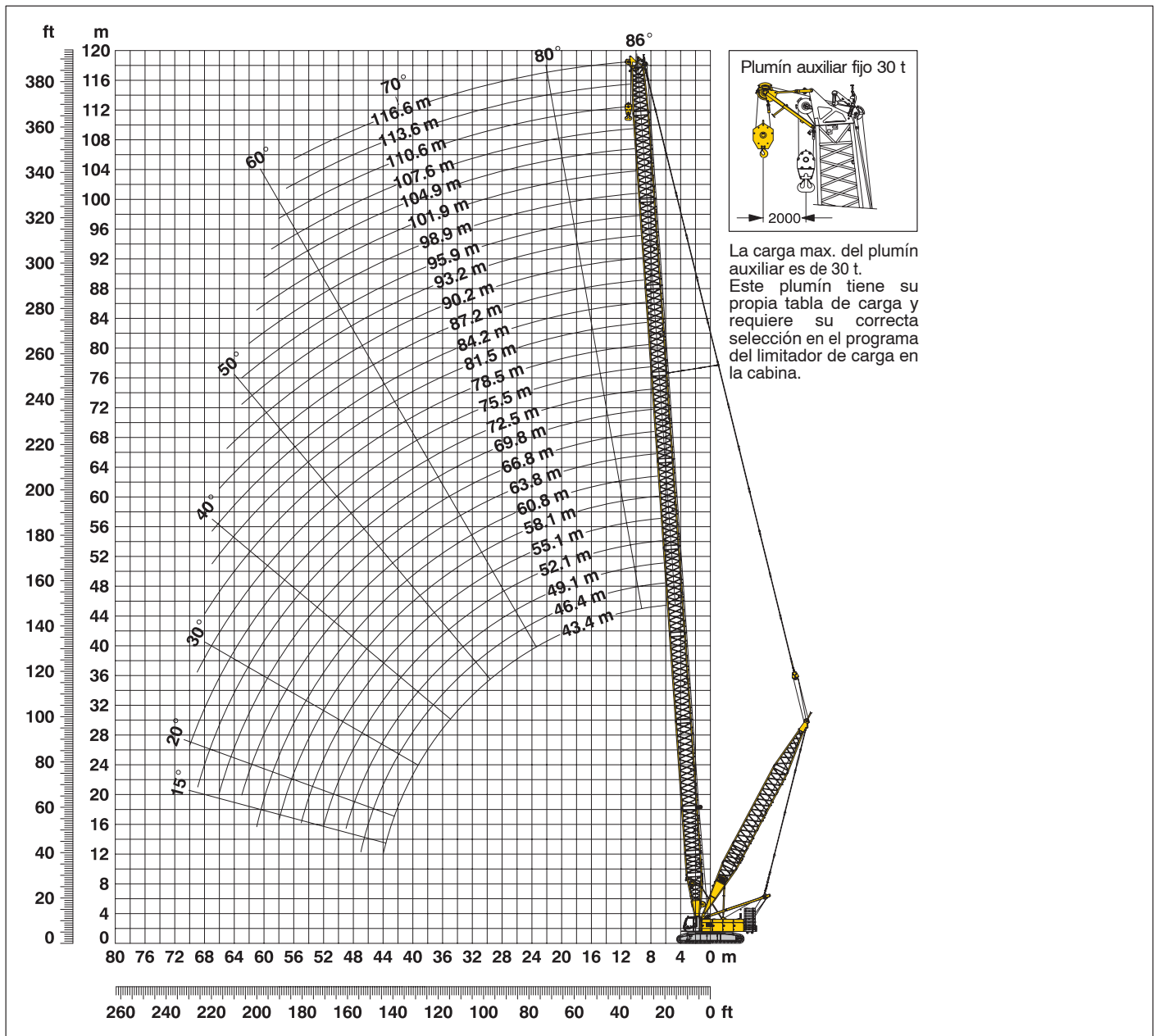
Cilindro distanciador

Ancho	mm	2715
Peso	kg	6640

Placa de contrapeso (carro contrapesos)

Ancho	mm	1800
Peso	kg	7340

Radio de trabajo - pluma principal (N° 2220.xx) **86° - 15°** 85.5 t contrapeso y 36 t contrapeso central



Configuración de pluma principal (Tabla 1 – N° 2220.xx)

Configuración para longitudes de pluma (43.4 m – 116.6 m)

Pie de pluma	Longitud	Número de tramos de pluma principal																									
		1	1	1	1	1	1	1	1	1	1	1	1	1	1	1	1	1	1	1	1	1	1	1	1		
Tramos pluma	7.0 m	1	1	1	1	1	1	1	1	1	1	1	1	1	1	1	1	1	1	1	1	1	1	1	1		
	3.0 m		1		1		1		1		1		1		1		1		1		1		1		1		
Cabeza pluma	6.0 m	1	1			1	1			1	1			1	1			1	1			1	1		1		
	11.7 m	2	2	3	3	3	3	4	4	4	4	5	5	5	5	6	6	6	6	7	7	7	7	8	8	8	8
Longitud pluma (m)	7.0 m	1	1	1	1	1	1	1	1	1	1	1	1	1	1	1	1	1	1	1	1	1	1	1	1		
		43.4	46.4	49.1	52.1	55.1	58.1	60.8	63.8	66.8	69.8	72.5	75.5	78.5	81.5	84.2	87.2	90.2	93.2	95.9	98.9	101.9	104.9	107.6	110.6	113.6	116.6

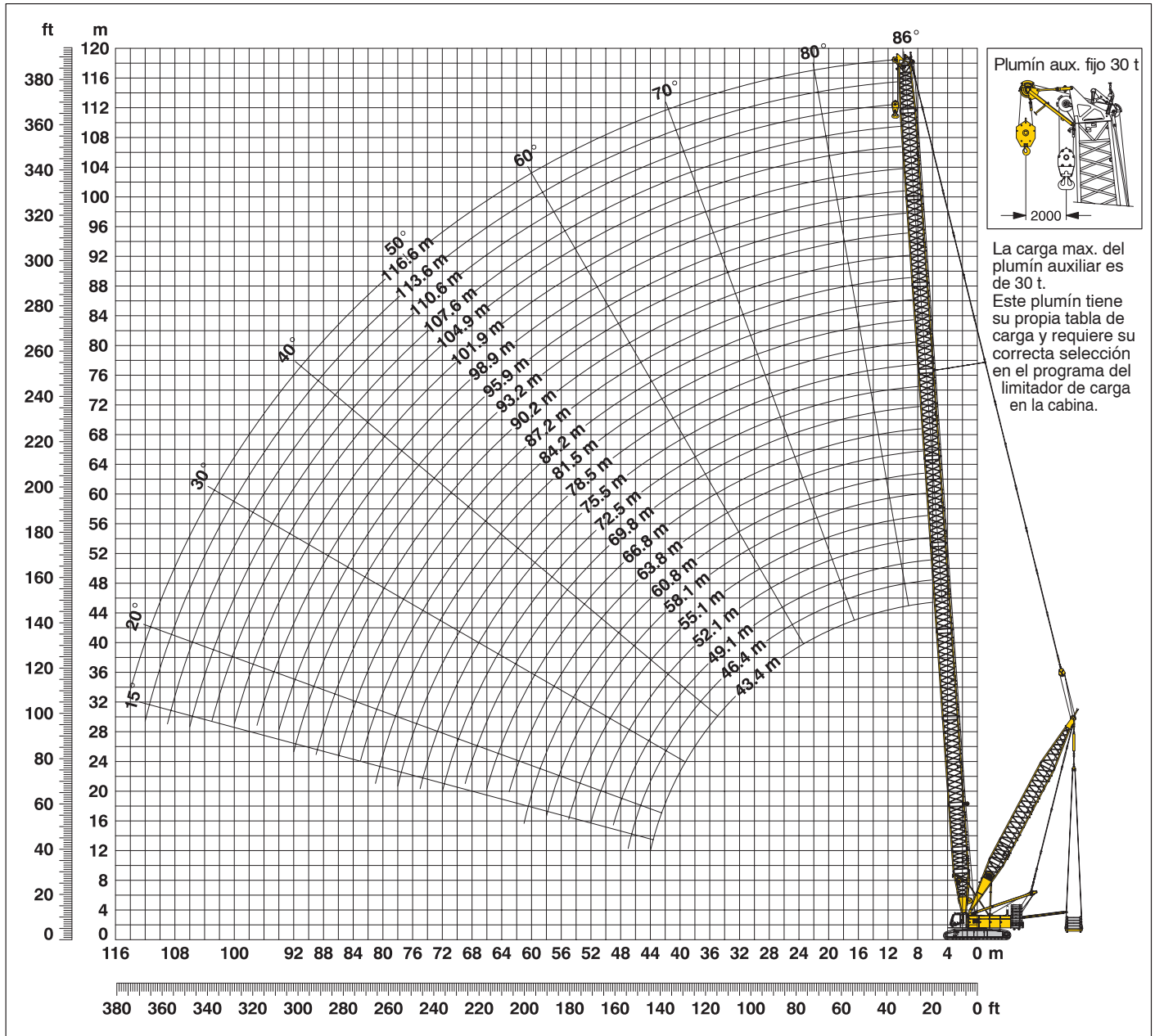
Tabla de cargas para pluma principal (N° 2220.xx)

Capacidades de carga indicadas en toneladas para pluma con longitud de (43.4 m – 116.6 m) – con cabrestantes de 150 kN
85.5 t contrapeso y 36.0 t contrapeso central

Radio (m)	Longitud pluma en (m)											Radio (m)	
	43.4	52.1	63.8	72.5	78.5	84.2	90.2	95.9	98.9	104.9	110.6		116.6
5.9	t	t	t	t	t	t	t	t	t	t	t	t	5.9
6	193.7												6
7	190.0												7
8	152.6	152.7											8
9	127.0	127.0	107.9	84.1									9
10	108.2	108.1	106.6	83.6	72.1	58.5							10
12	94.1	93.9	93.3	82.2	71.4	58.4	50.2	38.8	36.1				12
14	74.2	74.1	73.4	72.8	70.1	58.3	48.7	38.2	35.6	30.8	25.7	21.8	14
16	60.2	59.9	59.7	59.2	58.7	56.8	47.4	37.3	34.7	29.9	25.0	21.3	16
18	50.6	50.2	49.5	48.8	48.3	47.9	46.2	36.5	33.9	29.2	24.3	20.7	18
20	47.8	43.1	42.3	41.7	41.1	40.7	40.2	35.8	33.3	28.8	23.7	20.2	20
22	41.7	37.0	36.2	35.6	35.0	34.6	34.0	33.6	32.7	28.5	23.2	19.7	22
24	36.4	36.0	31.4	30.7	30.2	30.1	29.8	29.3	29.0	28.2	22.7	19.3	24
26	32.0	31.7	27.9	27.3	26.7	26.2	25.7	25.2	24.9	24.3	22.3	18.9	26
28	28.8	28.5	27.8	23.9	23.3	22.9	22.3	21.8	21.5	20.9	20.4	18.7	28
30	25.7	25.4	24.7	24.1	20.5	20.0	19.4	18.9	18.6	18.0	17.6	17.0	30
32	23.0	22.7	22.0	21.4	20.8	17.6	17.0	16.5	16.2	15.6	15.1	15.1	32
34	20.7	20.3	19.6	19.0	18.5	18.1	15.1	15.1	14.9	14.2	13.7	13.1	34
36	18.6	18.3	17.6	17.0	16.5	16.1	15.5	13.2	12.9	12.3	11.8	11.2	36
38	16.8	16.5	15.8	15.2	15.1	14.9	14.4	13.9	11.2	10.6	10.1	9.4	38
40	15.2	15.1	14.8	14.2	13.7	13.2	12.7	12.2	11.9	9.0	8.5	7.9	40
42	14.2	13.9	13.3	12.7	12.2	11.7	11.2	10.7	10.4	9.8	7.2	6.6	42
44	12.8	12.6	11.9	11.3	10.8	10.4	9.8	9.4	9.1	8.5	8.0	5.4	44
46	11.4	11.3	10.7	10.1	9.6	9.2	8.6	8.2	7.9	7.3	6.8	6.2	46
50		10.2	9.6	9.0	8.5	8.1	7.5	7.1	6.8	6.2	5.7	5.1	50
55		8.2	7.7	7.1	6.6	6.2	5.6	5.2	4.9	4.3	3.8	3.2	55
60			5.6	5.1	4.6	4.2	3.7	3.2	2.9	2.3			60
65			3.9	3.4	3.0	2.6	2.0						65
				2.0									

Esta tabla de cargas sirve únicamente como información. Para trabajos de elevación consultar la tabla de carga de la cabina o el manual.

Radio de trabajo - pluma principal (N° 2220.xx) **86° - 15°** **85.5 t contrapeso, 36 t contrapeso central y** **contrapeso flotante de 120 t máx. a un radio de 13 m**



Configuración de pluma principal (Tabla 1 - N° 2220.xx)

Configuración para longitudes de pluma (43.4 m - 116.6 m)

Pie de pluma	Longitud	Número de tramos de pluma principal																										
		7.0 m	3.0 m	6.0 m	11.7 m	7.0 m	7.0 m	7.0 m	7.0 m	7.0 m	7.0 m	7.0 m	7.0 m	7.0 m	7.0 m	7.0 m	7.0 m	7.0 m	7.0 m	7.0 m	7.0 m	7.0 m	7.0 m					
Pie de pluma	7.0 m	1	1	1	1	1	1	1	1	1	1	1	1	1	1	1	1	1	1	1	1	1	1					
Tramos pluma	3.0 m		1		1		1		1		1		1		1		1		1		1		1					
	6.0 m	1	1			1	1			1	1			1	1			1	1			1	1					
Cabeza pluma	11.7 m	2	2	3	3	3	3	4	4	4	4	4	5	5	5	5	6	6	6	6	7	7	7	7	8	8	8	8
	7.0 m	1	1	1	1	1	1	1	1	1	1	1	1	1	1	1	1	1	1	1	1	1	1	1	1	1	1	1
Longitud pluma (m)		43.4	46.4	49.1	52.1	55.1	58.1	60.8	63.8	66.8	69.8	72.5	75.5	78.5	81.5	84.2	87.2	90.2	93.2	95.9	98.9	101.9	104.9	107.6	110.6	113.6	116.6	

Tablas de cargas para pluma principal (N° 2220.xx)

85.5 t contrapeso y 36 t contrapeso central

Pluma principal 43.4 m

Radio (m)	Contrapeso flotante a un radio de 13 m				
	0	50	75	90	120
	t	t	t	t	t
5.9	193.7	200.3			
6	190.0	200.3			
7	152.6	199.4			
8	127.0	197.5	197.5		
9	108.2	191.8	194.5	194.7	
10	94.1	167.7	191.3	191.3	
12	74.2	133.2	162.9	180.8	182.9
14	60.2	110.1	134.9	149.8	176.1
16	50.6	93.4	114.9	127.6	153.2
18	47.8	85.6	104.1	115.5	137.9
20	41.7	74.9	91.6	101.8	121.7
22	36.4	66.6	81.6	90.6	108.7
24	32.0	59.7	73.5	81.6	98.1
26	28.8	53.9	66.4	74.1	89.0
28	25.7	48.9	60.5	67.5	81.5
30	23.0	44.8	55.5	61.9	74.5
32	20.7	41.0	51.1	57.2	68.1
34	18.6	37.7	47.1	52.9	62.3
36	16.8	34.8	43.9	49.1	57.3
38	15.2	32.2	40.7	45.7	52.6
40	14.2	30.0	37.9	42.8	48.2
42	12.8	27.9	35.4	39.3	44.1

Pluma principal 52.1 m

Radio (m)	Contrapeso flotante a un radio de 13 m				
	0	50	75	90	120
	t	t	t	t	t
7	152.7	153.0			
8	127.0	151.6			
9	108.1	150.2			
10	93.9	147.5	147.5		
12	74.1	132.9	141.2	141.2	
14	59.9	109.8	134.5	137.1	
16	50.2	93.0	114.5	127.2	131.8
18	43.1	80.4	99.2	110.4	126.7
20	37.0	70.6	87.3	97.2	117.1
22	36.0	66.2	81.3	90.2	108.4
24	31.7	59.5	73.1	81.2	97.7
26	28.5	53.5	66.1	73.8	88.6
28	25.4	48.5	60.1	67.2	81.1
30	22.7	44.5	55.2	61.6	74.5
32	20.3	40.7	50.7	56.9	69.0
34	18.3	37.4	46.8	52.6	63.9
36	16.5	34.5	43.6	48.8	59.6
38	15.1	31.9	40.5	45.4	55.6
40	13.9	29.8	37.7	42.5	52.1
42	12.6	27.7	35.2	39.8	48.3
44	11.3	25.7	32.9	37.3	44.9
46	10.2	24.0	30.8	35.0	41.6
48	9.2	22.3	29.1	32.9	38.5
50	8.2	20.8	27.3	31.0	35.6

Pluma principal 63.8 m

Radio (m)	Contrapeso flotante a un radio de 13 m				
	0	50	75	90	120
	t	t	t	t	t
8	107.9				
9	106.6	106.6			
10	93.3	105.5			
12	73.4	100.5			
14	59.7	97.9	97.9		
16	49.5	92.2	94.8	94.8	
18	42.3	79.6	90.8	90.8	
20	36.2	69.8	85.6	85.6	
22	31.4	61.6	76.7	84.8	85.2
24	27.9	55.2	68.9	77.0	82.9
26	27.8	52.8	65.4	73.1	81.3
28	24.7	47.8	59.7	66.5	79.8
30	22.0	43.8	54.5	60.9	74.0
32	19.6	40.0	50.0	56.2	68.2
34	17.6	36.7	46.1	51.9	63.2
36	15.8	33.8	42.9	48.1	58.9
38	14.8	31.2	39.8	45.0	55.0
40	13.3	29.2	37.0	41.9	51.4
42	11.9	27.1	34.5	39.1	48.2
44	10.7	25.1	32.3	36.7	45.3
46	9.6	23.4	30.2	34.4	42.8
50	7.7	20.3	26.8	30.4	38.1
55	5.6	17.1	22.9	26.4	33.0
60	3.9	14.7	19.7	22.9	27.8

Pluma principal 72.5 m

Radio (m)	Contrapeso flotante a un radio de 13 m				
	0	50	75	90	120
	t	t	t	t	t
8	83.3				
10	81.7				
12	72.8	79.7			
14	59.2	76.8			
16	48.8	74.6	74.6		
18	41.7	71.6	71.6		
20	35.6	68.9	68.9	68.9	
22	30.7	61.0	66.7	66.7	
24	27.3	54.6	65.0	65.0	
26	23.9	49.0	61.5	63.7	
28	24.1	47.2	59.1	62.6	
30	21.4	43.2	53.9	60.3	61.6
32	19.0	39.4	49.4	55.6	60.7
34	17.0	36.1	45.5	51.3	59.9
36	15.2	33.2	42.3	47.5	58.4
38	14.2	30.6	39.2	44.4	54.4
40	12.7	28.6	36.4	41.3	50.8
44	10.1	24.6	31.7	36.1	44.9
46	9.0	22.8	29.9	33.8	42.2
50	7.1	19.8	26.2	30.1	37.6
55	5.1	16.6	22.4	25.9	32.7
60	3.4	14.2	19.3	22.5	28.8
65	2.0	11.9	16.6	19.5	25.2
70		9.9	14.5	17.0	21.1

Tablas de cargas para pluma principal (N° 2220.xx)

85.5 t contrapeso y 36 t contrapeso central

Pluma principal 78.5 m

Radio (m)	Contrapeso flotante a un radio de 13 m				
	0	50	75	90	120
	t	t	t	t	t
10	70.5				
12	69.4	69.4			
14	58.7	66.8			
16	48.3	64.6			
18	41.1	62.7	63.3		
20	35.0	60.3	60.3		
22	30.2	56.4	56.4		
24	26.7	54.0	55.3	55.3	
26	23.3	48.4	54.4	54.4	
28	20.5	44.0	53.3	53.3	
30	20.8	42.7	52.2	52.2	
32	18.5	38.9	48.9	51.3	
34	16.5	35.6	45.0	50.5	50.5
36	15.1	32.7	41.8	47.0	49.8
38	13.7	30.1	38.7	43.9	49.2
40	12.2	28.1	35.9	40.8	48.9
44	9.6	24.1	31.2	35.6	44.4
46	8.5	22.3	29.4	33.3	41.7
50	6.6	19.3	25.7	29.6	37.1
55	4.6	16.1	21.9	25.4	32.2
60	3.0	13.8	18.8	22.0	28.4
65		11.5	16.1	19.1	24.9
70		9.5	14.1	16.6	22.0
75		7.8	12.0	14.6	18.6

Pluma principal 82.2 m

Radio (m)	Contrapeso flotante a un radio de 13 m				
	0	50	75	90	120
	t	t	t	t	t
10	57.1				
12	57.4				
14	56.0	56.0			
16	47.9	54.0			
18	40.7	52.6			
20	34.6	50.9			
22	30.1	49.1	49.1		
24	26.2	47.7	47.7		
26	22.9	46.4	46.4	47.1	
28	20.0	43.6	45.4	45.4	
30	17.6	39.5	43.4	43.4	
34	16.1	35.2	41.6	41.6	
36	14.9	32.3	40.8	40.8	
38	13.2	30.0	38.3	40.1	42.1
40	11.7	27.7	35.5	39.5	39.5
44	9.2	23.6	30.8	35.2	38.9
46	8.1	21.9	29.0	32.9	38.6
50	6.2	18.9	25.3	29.2	36.7
55	4.2	15.7	21.5	25.0	31.8
60	2.6	13.4	18.4	21.6	28.0
65		11.1	15.8	18.7	24.6
70		9.1	13.7	16.2	21.6
75		7.4	11.7	14.3	19.1
80		5.9	9.9	12.3	16.3

Pluma principal 90.2 m

Radio (m)	Contrapeso flotante a un radio de 13 m				
	0	50	75	90	120
	t	t	t	t	t
10	50.2				
14	47.4				
16	46.2	46.2			
18	40.2	45.2			
20	34.0	43.5			
22	29.8	43.0			
24	25.7	42.5	42.5		
26	22.3	42.2	42.2		
28	19.4	41.8	41.8	41.8	
30	17.0	38.9	41.6	41.6	
34	15.5	34.6	41.5	41.5	
36	14.4	31.7	40.8	41.5	
38	12.7	29.5	37.7	41.4	42.1
40	11.2	27.1	35.0	39.8	41.4
44	8.6	23.1	30.2	34.6	41.4
46	7.5	21.4	28.4	32.4	40.8
50	5.6	18.3	24.8	28.7	36.1
55	3.7	15.2	21.0	24.5	31.3
60	2.0	12.9	17.9	21.1	27.5
65		10.6	15.2	18.2	24.1
70		8.6	13.2	15.7	21.1
75		7.0	11.2	13.8	18.6
80		5.5	9.5	11.8	16.4
85		4.2	7.9	10.1	14.4

Pluma principal 95.9 m

Radio (m)	Contrapeso flotante a un radio de 13 m				
	0	50	75	90	120
	t	t	t	t	t
10	38.7				
14	37.1				
16	36.3				
18	35.6				
20	33.6	35.1			
24	25.2	34.7			
26	21.8	34.7			
28	18.9	34.7	34.7		
30	16.5	34.7	34.7		
32	15.1	34.6	34.6	34.6	
34	13.2	31.7	34.6	34.6	
36	13.9	31.3	34.6	34.6	
38	12.2	29.0	34.6	34.6	
40	10.7	26.7	34.5	34.6	
44	8.2	22.6	30.0	34.2	34.5
50	5.2	17.9	24.3	28.2	34.4
55	3.2	15.1	20.6	24.1	30.9
60		12.4	17.4	20.6	27.0
65		10.2	15.1	17.7	23.6
70		8.2	12.8	15.3	20.7
75		6.5	10.8	13.4	18.2
80		5.1	9.1	11.5	16.0
85		3.8	7.5	9.7	14.2
90		2.6	6.1	8.2	12.4

Tablas de cargas para pluma principal (N° 2220.xx)

85.5 t contrapeso y 36 t contrapeso central

Pluma principal 98.9 m

Radio (m)	Contrapeso flotante a un radio de 13 m				
	0	50	75	90	120
	t	t	t	t	t
10	36.1				
14	34.7				
16	33.9				
20	32.7	32.7			
24	24.9	32.1			
26	21.5	32.1			
28	18.6	32.1	32.1		
30	16.2	32.1	32.1		
34	12.9	31.4	32.0	32.0	
36	11.2	29.0	32.0	32.0	
38	11.9	28.7	32.0	32.0	
40	10.4	26.4	32.0	32.0	
44	7.9	22.3	29.7	32.0	
46	6.8	20.6	27.7	31.6	31.9
50	4.9	17.6	24.0	27.9	31.9
55	2.9	14.8	20.3	23.8	30.6
60		12.1	17.2	20.3	26.7
65		9.9	14.9	17.5	23.3
70		7.9	12.5	15.1	20.4
75		6.3	10.5	13.1	17.9
80		4.8	8.8	11.2	15.7
85		3.5	7.2	9.5	14.0
90		2.3	5.9	8.0	12.2
95			4.6	6.6	10.3

Pluma principal 104.9 m

Radio (m)	Contrapeso flotante a un radio de 13 m				
	0	50	75	90	120
	t	t	t	t	t
12	30.8				
16	29.2				
20	28.5				
22	28.2	28.2			
24	24.3	28.0			
26	20.9	27.9			
28	18.0	27.8			
30	15.6	27.7	27.7		
34	12.3	27.6	27.6		
36	10.6	27.5	27.5	27.5	
40	9.8	25.8	27.5	27.5	
44	7.3	21.8	27.5	27.5	
48	5.2	18.4	25.2	27.4	27.4
50	4.3	17.0	23.5	27.3	27.4
55	2.3	14.3	19.7	23.2	27.3
60		11.6	16.6	19.8	26.2
65		9.3	14.3	16.9	22.8
70		7.4	12.0	14.7	19.9
75		5.7	10.0	12.6	17.4
80		4.2	8.2	10.6	15.2
85		3.0	6.7	9.0	13.4
90			5.3	7.5	11.7
95			4.1	6.1	10.1
100			3.0	4.9	8.6

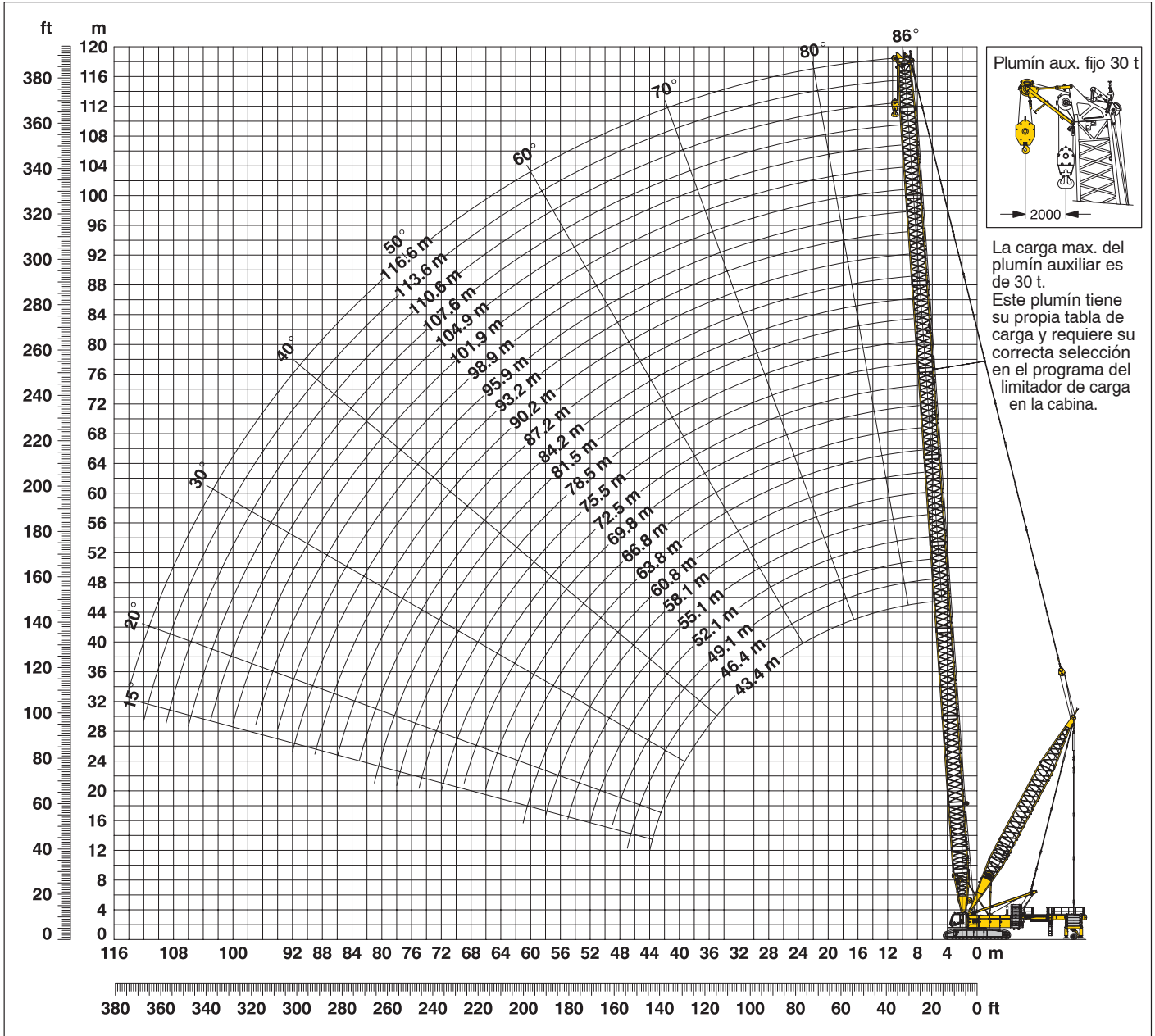
Pluma principal 110.6 m

Radio (m)	Contrapeso flotante a un radio de 13 m				
	0	50	75	90	120
	t	t	t	t	t
12	25.5				
16	24.1				
20	23.1				
22	22.6				
24	22.3	22.3			
26	20.4	22.2			
30	15.1	22.1			
32	13.7	22.1			
34	11.8	22.1	22.1		
36	10.1	22.1	22.1		
40	7.2	22.1	22.1	22.1	
42	8.0	22.0	22.0	22.0	
44	6.8	21.3	22.0	22.0	
46	5.7	19.6	22.0	22.0	
50	3.8	16.5	22.0	22.0	
55		13.8	19.2	21.9	21.9
60		11.1	16.1	19.3	21.9
70		6.9	11.5	14.3	19.4
80		3.8	7.8	10.2	14.8
85		2.5	6.3	8.5	12.8
90			4.9	7.0	11.2
95			3.7	5.7	9.7
100			2.6	4.5	8.3
105				3.4	6.9

Pluma principal 116.6m

Radio (m)	Contrapeso flotante a un radio de 13 m				
	0	50	75	90	120
	t	t	t	t	t
12	21.8				
16	20.7				
20	19.7				
24	18.9				
26	18.7	18.7			
30	15.1	18.6			
32	13.1	18.6			
34	11.2	18.6			
36	9.4	18.6	18.6		
38	7.9	18.6	18.6		
40	6.6	18.6	18.6		
42	5.4	18.6	18.6	18.6	
44	6.2	18.5	18.5	18.5	
46	5.1	18.5	18.5	18.5	
48	4.1	17.4	18.5	18.5	
50	3.2	15.9	18.5	18.5	
60		10.5	15.5	18.4	18.4
70		6.3	10.9	13.7	18.2
80		3.2	7.2	9.6	11.7
90			4.3	6.5	7.9
95			3.1	5.1	6.6
100			2.0	3.9	5.4
105				2.8	4.5
110					3.8

Radio de trabajo - pluma principal (N° 2220.xx) **86° - 15°** **85.5 t contrapeso, 36 t contrapeso central y** **carro de contrapesos de 120 t a un radio de 11.4 m - 15 m**



Configuración de pluma principal (Tabla 1 – N° 2220.xx)

Configuración para longitudes de pluma (43.4 m – 116.6 m)

	Longitud	Número de tramos de pluma principal																									
Pie de pluma	7.0 m	1	1	1	1	1	1	1	1	1	1	1	1	1	1	1	1	1	1	1	1	1	1	1	1		
	3.0 m		1		1		1		1		1		1		1		1		1		1		1		1		
Tramos pluma	6.0 m	1	1			1	1			1	1			1	1			1	1			1	1				
	11.7 m	2	2	3	3	3	3	4	4	4	4	5	5	5	5	6	6	6	6	7	7	7	7	8	8	8	8
Cabeza pluma	7.0 m	1	1	1	1	1	1	1	1	1	1	1	1	1	1	1	1	1	1	1	1	1	1	1	1	1	
Longitud pluma (m)		43.4	46.4	49.1	52.1	55.1	58.1	60.8	63.8	66.8	69.8	72.5	75.5	78.5	81.5	84.2	87.2	90.2	93.2	95.9	98.9	101.9	104.9	107.6	110.6	113.6	116.6

Tabla de cargas para pluma principal (N° 2220.xx)

Carro de contrapesos a un radio de 15 m

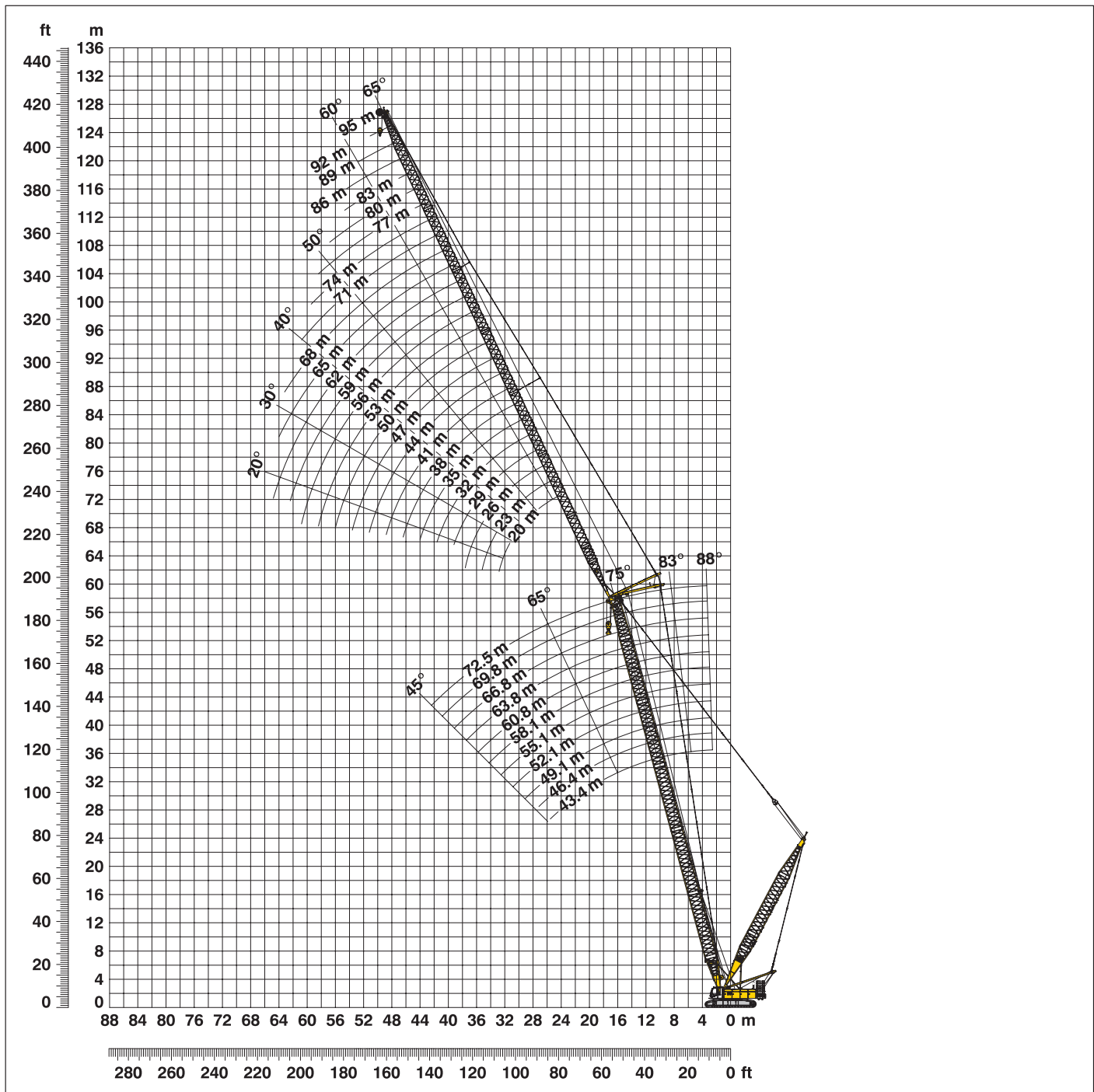
Capacidades de carga indicadas en toneladas para pluma con longitud de (43.4 m – 116.6 m) – con cabrestantes de 150 kN
85.5 t contrapeso, 36.0 t contrapeso central y carro de contrapesos de 120 t

Radio	Longitud pluma en (m)												Radio
	43.4	52.1	63.8	72.5	78.5	84.2	90.2	95.9	98.9	104.9	110.6	116.6	
(m)	t	t	t	t	t	t	t	t	t	t	t	t	(m)
5.9	200.3												5.9
6	200.3												6
7	199.4	153.0											7
8	197.5	151.6	107.9	83.3									8
9	194.5	150.2	106.6	82.9	71.2	57.1							9
10	191.3	147.5	105.5	81.7	70.5	57.1	50.2	38.7	36.1				10
12	182.9	141.2	100.5	79.7	69.4	57.4	48.7	38.0	35.6	30.8	25.5	21.8	12
14	176.1	137.1	97.9	76.8	66.8	56.0	47.4	37.1	34.7	29.5	24.8	21.3	14
16	166.6	131.8	94.8	74.6	64.6	54.0	46.2	36.3	33.9	29.2	24.1	20.7	16
18	149.7	126.7	90.8	71.6	62.7	52.6	45.2	35.6	33.3	28.8	23.6	20.2	18
20	132.2	122.8	85.6	68.9	60.3	50.9	43.5	35.1	32.7	28.5	23.1	19.7	20
22	118.1	117.7	84.8	66.7	56.4	49.1	43.0	34.7	32.2	28.2	22.6	19.3	22
24	106.6	106.2	82.9	65.0	55.3	47.7	42.5	34.7	32.1	28.0	22.3	18.9	24
26	97.0	96.6	81.3	63.7	54.4	46.4	42.2	34.7	32.1	27.9	22.2	18.7	26
28	88.7	88.5	79.8	62.6	53.3	45.4	41.8	34.7	32.1	27.8	22.2	18.7	28
30	81.7	81.4	78.6	61.6	52.2	43.4	41.6	34.7	32.1	27.7	22.1	18.6	30
32	75.5	75.2	74.5	60.7	51.3	42.4	41.5	34.6	32.1	27.6	22.1	18.6	32
34	70.0	69.9	69.2	59.9	50.5	41.6	41.5	34.6	32.0	27.6	22.1	18.6	34
36	64.3	65.1	64.4	58.9	49.8	40.8	41.5	34.6	32.0	27.5	22.1	18.6	36
38	59.2	60.8	60.1	58.8	49.2	40.1	41.4	34.6	32.0	27.5	22.1	18.6	38
40	54.4	57.1	56.5	55.9	48.9	39.5	41.4	34.6	32.0	27.5	22.1	18.6	40
42	49.8	53.7	53.0	52.4	48.7	39.2	41.4	34.5	32.0	27.5	22.0	18.6	42
44	15.1	50.5	49.9	49.3	48.5	38.9	41.4	34.5	32.0	27.5	22.0	18.5	44
46		47.1	47.0	46.5	46.0	38.6	41.4	34.5	31.9	27.4	22.0	18.5	46
48		43.8	44.6	44.0	43.5	38.4	41.3	34.5	31.9	27.4	22.0	18.5	48
50		40.5	42.1	41.6	41.1	38.1	40.2	34.4	31.9	27.4	22.0	18.5	50
55			36.9	36.4	35.9	35.5	35.0	34.4	31.8	27.3	21.9	18.4	55
60			31.9	32.0	31.6	31.2	30.6	30.2	30.1	27.3	21.9	18.4	60
65				28.4	28.0	27.6	27.1	26.7	26.4	25.9	21.8	18.3	65
70				24.6	24.8	24.5	24.0	23.6	23.3	22.7	21.3	18.2	70
75					21.9	21.7	21.3	20.8	20.6	20.0	19.4	17.1	75
80						19.3	18.9	18.5	18.2	17.7	17.2	11.7	80
85							16.7	16.4	16.1	15.6	12.8	9.8	85
90								14.6	14.4	12.8	11.2	7.9	90
95									12.7	11.7	9.8	6.6	95
100										10.6	8.6	5.4	100
105											7.8	4.5	105
110												3.8	110

Esta tabla de cargas sirve únicamente como información. Para trabajos de elevación consultar la tabla de carga de la cabina o el manual.

Radio de trabajo - plumín abatible (N° 1916.xx) 78° - 15°

Pluma principal 88° - 45°



Configuración de pluma principal (43.4 m - 72.5 m) – vea tabla 1 en la pagina 10
Configuración de plumín abatible (20 m - 95 m)

	Longitud	Número de tramos de plumín abatible																									
		20	23	26	29	32	35	38	41	44	47	50	53	56	59	62	65	68	71	74	77	80	83	86	89	92	95
Pie de plumín abatible	7.0 m	1	1	1	1	1	1	1	1	1	1	1	1	1	1	1	1	1	1	1	1	1	1	1	1	1	1
Tramos plumín abatible	3.0 m		1		1		1		1		1		1		1		1		1		1		1		1		1
	6.0 m	1	1		1	1		1	1		1	1		1	1		1	1		1	1		1	1		1	1
	12.0 m			1	1	1	1	2	2	2	2	3	3	3	3	4	4	4	4	5	5	5	5	6	6	6	6
Cabeza plumín abatible	7.0 m	1	1	1	1	1	1	1	1	1	1	1	1	1	1	1	1	1	1	1	1	1	1	1	1	1	1
Longitud de plumín abatible (m)		20	23	26	29	32	35	38	41	44	47	50	53	56	59	62	65	68	71	74	77	80	83	86	89	92	95

Tablas de cargas - plumín abatible (N° 1916.xx)

Pluma principal con ángulo 88°

Pluma principal 43.4 m

Radio (m)	Longitud de plumín (m)							
	20	29	41	53	62	71	83	95
8.8	t	t	t	t	t	t	t	t
11	66.2							
12	64.0	49.3						
14	62.0	48.8						
16	56.0	46.3	32.3					
18	50.2	42.5	30.5	20.7				
20	43.3	39.5	27.9	20.0	16.0			
22	38.1	35.9	26.2	19.1	15.5	10.9		
26	33.7	32.0	24.7	18.3	14.2	10.5	8.2	
32		26.3	22.1	17.2	13.3	9.8	6.9	4.7
40		20.7	19.0	15.7	12.4	9.2	6.4	4.3
44			15.3	13.7	11.4	8.5	5.9	3.9
48			13.5	12.9	11.0	8.2	5.6	3.7
55				12.0	10.4	7.9	5.4	3.5
60				9.7	9.2	7.3	4.9	3.1
70					8.5	6.8	4.6	2.8
75						5.8	4.1	2.3
							3.8	2.1

Pluma principal 49.1 m

Radio (m)	Longitud de plumín (m)							
	20	29	41	53	62	71	83	95
9	t	t	t	t	t	t	t	t
11	57.3							
14	57.2	43.9						
16	51.9	42.3	30.3					
18	46.4	40.2	28.1	19.6				
20	40.6	37.4	26.5	19.0	15.2			
24	35.9	34.0	25.0	18.2	14.0	10.3		
26	15.1	26.8	22.3	16.8	13.1	9.7	6.8	
30		24.7	21.3	16.4	12.7	9.4	6.6	4.5
32		21.1	19.1	15.6	12.1	9.0	6.3	4.3
40		19.8	18.1	14.4	11.9	8.8	6.2	4.1
44			14.6	12.9	11.0	8.2	5.7	3.7
48			12.4	12.0	10.5	8.0	5.4	3.6
55				11.0	9.9	7.7	5.2	3.4
60				9.6	8.5	7.1	4.8	3.0
70					7.5	6.5	4.5	2.7
80						5.4	4.0	2.2
							3.3	

Pluma principal 55.1 m

Radio (m)	Longitud de plumín (m)							
	20	29	41	53	62	71	83	95
9.2	t	t	t	t	t	t	t	t
12	52.2							
14	52.0	40.2						
17	48.5	39.3	27.9					
18	40.2	36.4	26.1	18.5				
20	38.2	35.0	25.4	18.2	14.5			
24	34.1	32.0	24.1	17.5	13.4	10.9		
26	26.5	25.5	21.6	16.2	12.6	9.3	6.6	
32		23.6	20.5	15.8	12.2	9.1	6.4	4.3
40		19.1	17.3	14.0	11.4	8.5	6.0	4.0
44			14.6	12.7	10.7	8.0	5.5	3.6
48			13.0	11.6	10.3	7.7	5.3	3.4
55				10.4	9.6	7.5	5.1	3.3
60				8.5	8.0	6.7	4.7	2.9
70					7.2	6.0	4.4	2.7
85						4.6	3.8	2.2
							2.7	

Pluma principal 60.8 m

Radio (m)	Longitud de plumín (m)							
	20	29	41	53	62	71	83	95
9.4	t	t	t	t	t	t	t	t
12	46.6							
14	46.2	35.8						
17	43.3	35.0	25.3					
19	37.1	32.6	24.1	17.3				
20	33.0	30.3	23.0	16.7	12.7			
24	31.2	27.7	22.5	16.4	12.5	10.3		
26	25.5	23.2	20.3	15.3	11.7	8.7	6.2	
32		21.7	19.3	14.3	11.4	8.5	6.1	4.1
36		17.7	16.0	13.3	10.7	8.0	5.7	3.8
44			14.0	12.5	10.2	7.8	5.5	3.6
48			12.0	10.7	8.8	7.3	5.0	3.3
55				9.6	8.3	7.1	4.8	3.1
65				7.6	7.3	6.4	4.5	2.8
70					4.5	5.0	3.9	2.3
85						4.5	3.5	2.1
							2.3	

Pluma principal 66.8 m

Radio (m)	Longitud de plumín (m)							
	20	29	41	53	62	71	83	95
9.7	t	t	t	t	t	t	t	t
12	42.1							
14	41.3	32.6						
17	39.8	31.8	23.4					
19	35.1	28.9	22.4	16.3				
22	31.5	27.4	21.5	15.8	11.9			
24	26.5	24.2	20.1	14.4	11.4	8.6		
26	24.2	21.9	19.1	13.8	11.1	8.4	5.9	
32		20.5	18.1	13.3	10.8	8.2	5.8	3.8
36		17.1	15.1	12.0	10.4	7.8	5.5	3.6
44			13.9	11.3	10.1	7.5	5.2	3.4
48			11.2	9.7	8.6	7.0	4.8	3.1
55				8.6	7.9	6.7	4.6	3.0
65				7.0	6.5	5.9	4.3	2.7
70					5.2	4.6	3.6	2.2
85						4.2	3.2	
							2.0	

Pluma principal 72.5 m

Radio (m)	Longitud de plumín (m)							
	20	29	41	53	62	71	83	95
9.9	t	t	t	t	t	t	t	t
12	36.1							
15	35.6	28.4						
17	33.6	26.9	20.6					
19	30.9	25.7	20.0	14.1				
22	27.5	24.8	19.1	13.7	10.8			
24	24.0	22.1	17.9	13.1	10.4	8.0		
26	22.2	20.1	17.0	12.8	10.2	7.8	5.5	
32		19.0	16.2	12.4	10.0	7.6	5.4	3.5
36		15.8	13.8	11.0	9.5	7.3	5.1	3.3
44			12.7	10.1	9.1	7.0	4.9	3.2
48			10.7	8.3	7.6	6.3	4.5	2.9
55				7.5	7.0	6.0	4.3	2.7
65				6.2	5.8	5.2	4.0	2.5
70					4.8	4.0	3.2	2.0
80						3.5	2.8	
							2.0	

Capacidades de cargas indicadas en toneladas, con plumín abatible (N° 1916.xx), 85.5 t contrapeso y contrapeso central de 36 t. Estas tablas de cargas sirven únicamente como información. Para trabajos de elevación consultar las tablas de cargas de la cabina o el manual.

Tablas de cargas - plumín abatible (N° 1916.xx)

Pluma principal con ángulo 83°

Pluma principal 43.4 m

Radio (m)	Longitud de plumín (m)							
	20	29	41	53	62	71	83	95
14.3	60.6	t	t	t	t	t	t	t
17	49.7	45.7						
22	36.8	36.4	27.0					
24	33.1	32.8	25.6	18.3				
26	30.1	30.1	24.5	18.0				
28		27.6	23.4	17.6	13.6			
30		25.4	22.5	17.2	13.3	9.7		
34		21.7	20.6	16.5	12.8	9.3	6.5	
36		20.1	19.7	16.1	12.5	9.2	6.4	
38			18.4	15.8	12.3	9.0	6.2	4.1
48			13.9	13.4	11.2	8.3	5.6	3.7
55				11.0	10.6	7.8	5.2	3.3
65					8.2	7.3	4.7	2.8
75						5.9	4.1	2.3
80							3.9	2.1
85							3.7	
90								

Pluma principal 49.1 m

Radio (m)	Longitud de plumín (m)							
	20	29	41	53	62	71	83	95
15	56.1	t	t	t	t	t	t	t
18	45.8	41.4						
22	36.3	35.9	26.1					
26	30.1	29.8	23.8	17.3				
28	27.4	27.2	22.8	17.0	13.0			
30		25.0	22.0	16.6	12.7	10.3		
34		21.4	20.3	16.0	12.3	9.0	6.2	
36		19.9	19.4	15.6	12.1	8.9	6.2	
38			18.1	15.3	11.9	8.7	6.0	4.0
46			14.4	13.6	11.1	8.2	5.6	3.6
48			13.7	13.2	10.9	8.1	5.5	3.6
55				10.8	10.4	7.7	5.1	3.3
60				9.5	9.1	7.5	4.8	3.0
65					8.0	7.2	4.6	2.7
75						5.8	4.1	2.3
80							3.8	2.0
85							3.6	

Pluma principal 55.1 m

Radio (m)	Longitud de plumín (m)							
	20	29	41	53	62	71	83	95
15.8	50.0	t	t	t	t	t	t	t
19	42.7	37.9						
22	35.7	35.3	24.8					
26	29.7	29.3	23.1	16.7				
28	27.0	26.7	22.3	16.4	13.3			
32		22.7	20.8	15.8	12.1	8.9		
36		19.5	19.0	15.3	11.7	8.6	6.0	
38			17.8	14.2	11.5	8.5	5.9	3.9
42			15.6	13.7	11.2	8.2	5.7	3.7
48			13.4	12.8	10.6	7.9	5.4	3.5
55				10.6	10.1	7.5	5.0	3.2
60				9.2	8.9	7.3	4.7	3.0
65					7.8	7.0	4.5	2.7
75						5.6	4.0	2.2
80							3.8	2.0
90							3.2	

Pluma principal 60.8 m

Radio (m)	Longitud de plumín (m)							
	20	29	41	53	62	71	83	95
16.5	43.4	t	t	t	t	t	t	t
20	39.4	33.5						
24	31.6	31.1	22.6					
28	26.6	26.2	21.3	15.7				
30		24.1	20.6	15.4	11.6			
32		22.2	19.9	14.3	11.4	8.4		
36		19.2	18.4	13.7	11.1	8.2	5.7	
38		17.8	17.4	13.5	10.9	8.1	5.6	
40			16.3	13.3	10.7	8.0	5.5	3.7
44			14.7	12.8	10.5	7.8	5.3	3.5
48			13.1	12.2	10.2	7.6	5.2	3.4
50			12.3	11.8	10.1	7.5	5.1	3.3
60				9.0	8.6	7.0	4.6	2.9
70					6.4	6.2	4.1	2.4
75						5.4	3.9	2.2
90							3.0	

Pluma principal 66.8 m

Radio (m)	Longitud de plumín (m)							
	20	29	41	53	62	71	83	95
17.2	38.8	t	t	t	t	t	t	t
20	38.5	30.4						
24	30.9	29.2	21.3					
28	26.0	25.6	20.3	14.1				
30	23.8	23.5	19.7	13.9	11.0			
34		20.1	18.5	13.4	10.7	8.0		
36		18.7	17.9	13.1	10.5	7.9	5.4	
38		17.4	16.9	12.9	10.4	7.8	5.4	
40			15.8	12.7	10.2	7.7	5.3	3.5
44			14.4	12.4	10.0	7.5	5.1	3.4
50			12.0	11.2	9.6	7.2	4.9	3.2
55				10.0	9.0	7.0	4.7	3.0
60				8.7	8.2	6.7	4.4	2.8
70					6.3	5.9	4.0	2.3
75						5.1	3.7	2.1
90							2.8	

Pluma principal 72.5 m

Radio (m)	Longitud de plumín (m)							
	20	29	41	53	62	71	83	95
17.9	33.6	t	t	t	t	t	t	t
22	32.7	26.1						
24	30.2	25.7	19.2					
28	25.4	23.6	18.7	13.0				
30	23.3	22.1	18.3	12.9				
32		21.0	17.8	12.7	10.0			
34		19.6	17.2	12.5	9.8	7.5		
38		17.0	16.0	12.0	9.6	7.4	5.1	
40			15.3	11.8	9.4	7.3	5.0	3.6
44			13.6	11.2	9.2	7.1	4.8	3.1
48			12.4	10.5	9.0	6.9	4.7	3.0
50			11.7	10.1	8.8	6.8	4.6	3.0
60				7.8	7.4	6.1	4.2	2.6
70					5.9	5.1	3.7	2.2
80						4.1	3.2	
90							2.6	

Capacidades de cargas indicadas en toneladas, con plumín abatible (N° 1916.xx), 85.5 t contrapeso y contrapeso central de 36 t. Estas tablas de cargas sirven únicamente como información. Para trabajos de elevación consultar las tablas de cargas de la cabina o el manual.

Tablas de cargas - plumín abatible (N° 1916.xx)

Pluma principal con ángulo 75°

Pluma principal 43.3 m

Radio (m)	Longitud de plumín (m)							
	20	29	41	53	62	71	83	95
22.9	t	t	t	t	t	t	t	t
28	31.0							
32	24.7	24.2						
38	20.9	20.5	19.8					
42		16.5	15.8	15.1				
46		14.9	14.3	13.7	12.2			
48			12.7	12.0	11.5	8.6		
50			11.9	11.3	10.8	8.5		
55			11.2	10.6	10.2	8.3	5.6	
60				9.2	8.7	8.1	5.4	3.3
65				8.0	7.6	7.0	5.2	3.2
70				7.0	6.6	6.1	4.9	3.0
75					5.8	5.2	4.6	2.8
80						4.5	3.9	2.5
85						3.9	3.3	2.3
90							2.8	2.1
							2.3	

Pluma principal 49.1 m

Radio (m)	Longitud de plumín (m)							
	20	29	41	53	62	71	83	95
24.4	t	t	t	t	t	t	t	t
30	28.2							
34	21.8	21.3						
40	18.6	18.2	17.5					
42		15.1	14.6	13.9				
44			13.7	13.0				
46			12.8	12.1	11.6			
48			12.1	11.4	10.9	9.2		
50			11.4	10.7	10.2	8.2		
55			10.7	10.1	9.6	8.1		
60			9.3	8.7	8.2	7.6	5.3	
65				7.6	7.1	6.5	5.1	3.1
70				6.6	6.2	5.6	4.9	2.9
75					5.4	4.8	4.2	2.7
80					4.7	4.2	3.5	2.5
85						3.6	2.9	2.3
							2.4	

Pluma principal 55.1 m

Radio (m)	Longitud de plumín (m)							
	20	29	41	53	62	71	83	95
26	t	t	t	t	t	t	t	t
30	24.9							
36	20.8	20.2						
40	16.4	16.0	15.3					
42		14.5	13.8	12.6				
44		13.5	12.9	12.1				
46		12.7	12.1	11.3	10.8			
48			11.3	10.6	10.1			
50			10.7	10.0	9.5	8.0		
55			10.0	9.4	8.9	8.0		
60			8.7	8.1	7.6	7.0	5.2	
65				7.0	6.5	5.9	5.0	3.1
70				6.1	5.6	5.1	4.4	2.9
75					4.9	4.3	3.7	2.7
80					4.2	3.7	3.0	2.3
85						3.1	2.5	
						2.6		

Pluma principal 60.8 m

Radio (m)	Longitud de plumín (m)							
	20	29	41	53	62	71	83	95
27.4	t	t	t	t	t	t	t	t
32	22.1							
38	18.2	17.6						
40	15.1	14.7	13.9					
42		13.7	12.9					
44		12.8	12.1	11.3				
46		12.0	11.3	10.6				
48		11.2	10.6	9.9	9.4			
50			10.0	9.3	8.7			
55			9.4	8.7	8.2	7.5		
60			8.1	7.5	7.0	6.3	4.9	
65				6.4	6.0	5.4	4.6	2.9
70				5.6	5.1	4.5	3.8	2.8
75				4.8	4.4	3.8	3.1	2.4
80					3.8	3.2	2.6	
85						2.7	2.0	
						2.2		

Pluma principal 66.8 m

Radio (m)	Longitud de plumín (m)							
	20	29	41	53	62	71	83	95
29	t	t	t	t	t	t	t	t
34	19.3							
38	15.8	15.2						
44	14.1	13.6	12.4					
48		11.1	10.4	9.6				
50		9.8	9.2	8.4	7.9			
55			8.6	7.9	7.4			
60			7.4	6.7	6.2	5.6		
65			6.4	5.8	5.3	4.7	3.9	
70				5.0	4.5	3.9	3.2	2.4
75				4.3	3.8	3.3	2.5	
80					3.3	2.7		
					2.7	2.2		

Pluma principal 72.5 m

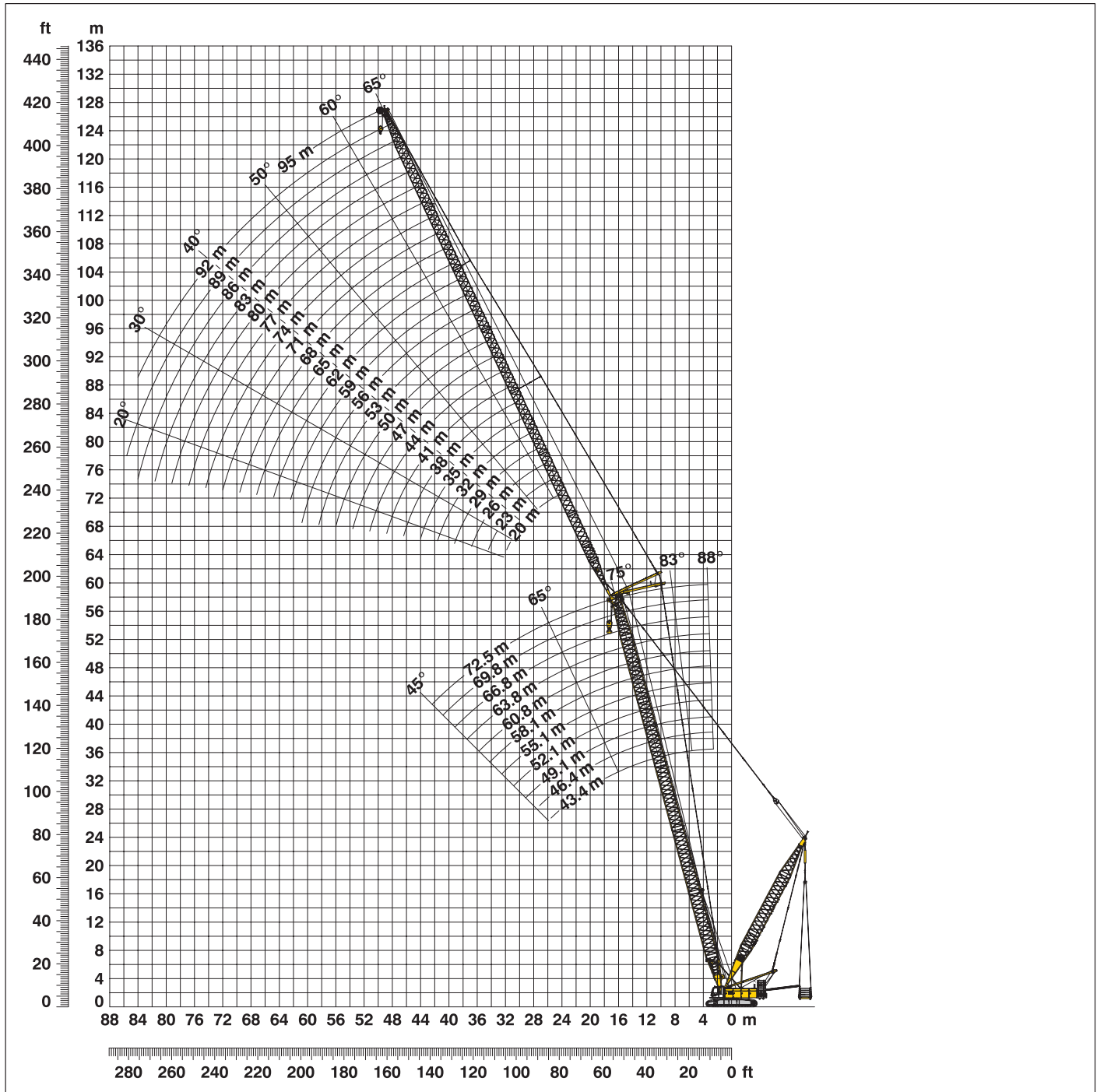
Radio (m)	Longitud de plumín (m)							
	20	29	41	53	62	71	83	95
30.5	t	t	t	t	t	t	t	t
36	17.0							
40	14.2	13.6						
46	12.3	11.8	11.0					
48		9.7	8.9	8.1				
50		9.1	8.4	7.6				
55			7.9	7.1	6.6			
60			6.8	6.0	5.5	4.9		
65			5.8	5.2	4.7	4.0	3.2	
70				4.4	3.9	3.3	2.6	
75					3.7	3.3	2.7	
80						2.8	2.2	
						2.3		

Capacidades de cargas indicadas en toneladas, con plumín abatible (N° 1916.xx), 85.5 t contrapeso y contrapeso central de 36 t. Estas tablas de cargas sirven únicamente como información. Para trabajos de elevación consultar las tablas de cargas de la cabina o el manual.

Radio de trabajo - plumín abatible (N° 1916.xx) 78° - 15°

Pluma principal 88° - 45°

Contrapeso flotante de 120 t a un radio de 13 m



Configuración de pluma principal (43.4 m - 72.5 m) – vea tabla 1 en la pagina 10

Configuración de plumín abatible (20 m - 95 m)

	Longitud	Número de tramos de plumín abatible																									
		20	23	26	29	32	35	38	41	44	47	50	53	56	59	62	65	68	71	74	77	80	83	86	89	92	95
Pie de plumín abatible	7.0 m	1	1	1	1	1	1	1	1	1	1	1	1	1	1	1	1	1	1	1	1	1	1	1	1	1	1
Tramos plumín abatible	3.0 m		1		1		1		1		1		1		1		1		1		1		1		1		1
	6.0 m	1	1		1	1	1		1	1		1	1		1	1		1	1		1	1		1	1		1
	12.0 m			1	1	1	1	2	2	2	2	3	3	3	3	4	4	4	4	5	5	5	5	6	6	6	6
Cabeza plumín abatible	7.0 m	1	1	1	1	1	1	1	1	1	1	1	1	1	1	1	1	1	1	1	1	1	1	1	1	1	1
Longitud de plumín abatible (m)		20	23	26	29	32	35	38	41	44	47	50	53	56	59	62	65	68	71	74	77	80	83	86	89	92	95

Tablas de cargas - plumín abatible (N° 1916.xx)

Pluma principal con ángulo 75°

Contrapeso flotante de 120 t a un radio de 13 m

Pluma principal 43.4 m

Radio (m)	Longitud de plumín (m)							
	20	29	41	53	62	71	83	95
22.9	t	t	t	t	t	t	t	t
26	52.9							
28	49.2							
32	46.7	38.3						
38	41.5	35.4	23.9					
42		30.7	21.8	16.6				
46		26.4	20.2	16.1	12.2			
50			18.5	15.6	11.9	8.6		
55			17.0	14.2	11.6	8.3	5.6	
60				14.1	11.2	8.1	5.4	3.3
65				13.5	10.8	7.9	5.2	3.2
70				12.1	10.4	7.7	4.9	3.0
75					9.9	7.5	4.7	2.8
80						7.3	4.5	2.5
85						7.0	4.2	2.3
90							4.1	2.1
95							3.9	

Pluma principal 49.1 m

Radio (m)	Longitud de plumín (m)							
	20	29	41	53	62	71	83	95
24.4	t	t	t	t	t	t	t	t
30	47.8							
34	43.5	36.1						
40	38.9	33.9	22.9					
42		28.7	21.0	15.9				
44		27.5	20.3	15.7				
46			19.6	15.5	11.7			
50			18.9	15.3	11.6	9.2		
55			17.3	13.9	11.3	8.1		
60			15.5	13.7	11.0	7.9	5.3	
65				13.5	10.8	7.7	5.1	3.1
70				12.4	10.6	7.5	4.9	2.9
75					10.2	7.4	4.6	2.7
80					9.4	7.2	4.4	2.5
85						7.0	4.2	2.3
90							4.0	2.1
95							3.7	

Pluma principal 55.1 m

Radio (m)	Longitud de plumín (m)							
	20	29	41	53	62	71	83	95
26	t	t	t	t	t	t	t	t
28	45.0							
30	43.7							
36	42.3	34.9						
40	37.0	32.4	22.0					
44		28.7	20.9	15.4				
48		26.7	19.7	14.3	11.2			
55			18.4	13.9	11.1	8.0		
60			16.1	13.4	10.7	7.8	5.2	
65				13.2	10.5	7.6	5.0	3.1
70				12.4	10.4	7.4	4.8	2.9
75					10.2	7.3	4.6	2.7
80					9.6	7.1	4.4	2.5
85						6.9	4.2	2.3
90						6.7	4.0	2.1
95							3.9	
							3.7	

Pluma principal 60.8 m

Radio (m)	Longitud de plumín (m)							
	20	29	41	53	62	71	83	95
27.4	t	t	t	t	t	t	t	t
30	40.5							
32	39.7							
38	38.4	32.1						
42	15.1	29.5	20.7					
46		27.3	19.8	13.7				
50		24.5	18.8	13.5	10.5			
55			17.6	13.1	10.4	7.6		
60			16.2	12.8	10.3	7.5	4.9	
65				12.7	10.1	7.3	4.8	2.9
70				12.2	10.0	7.2	4.7	2.8
75				11.0	9.8	7.1	4.5	2.6
80					9.3	6.9	4.3	2.4
85						6.8	4.1	2.3
90						6.5	3.9	2.1
95							3.8	
							3.7	

Pluma principal 66.8 m

Radio (m)	Longitud de plumín (m)							
	20	29	41	53	62	71	83	95
29	t	t	t	t	t	t	t	t
34	36.8							
38	34.8	29.1						
44	31.9	27.8	19.8					
48		24.7	18.8	13.0				
55		22.4	17.9	12.8	9.9			
60			16.1	12.3	9.8	7.2		
65			13.7	12.2	9.7	7.1	4.6	
70				11.9	9.5	7.0	4.5	2.7
75				11.4	9.4	6.8	4.3	2.6
80					9.1	6.7	4.2	2.4
85					8.5	6.5	4.0	2.2
95						6.3	3.8	2.0
100							3.6	
							3.4	

Pluma principal 72.5 m

Radio (m)	Longitud de plumín (m)							
	20	29	41	53	62	71	83	95
30.5	t	t	t	t	t	t	t	t
36	31.9							
40	28.8	25.2						
46	26.2	23.4	18.2					
48		21.0	17.4	12.0				
50		20.2	17.0	11.9				
55			16.5	11.8	9.1			
60			15.3	11.5	9.0	6.8		
65			13.5	11.2	9.0	6.7	4.4	
70				10.8	8.8	6.6	4.3	2.6
75				10.2	8.7	6.5	4.1	2.4
80					8.4	6.4	4.0	2.3
85					7.9	6.2	3.8	2.1
90						5.7	3.5	
100							3.3	

Capacidades de cargas indicadas en toneladas, con plumín abatible (N° 1916.xx), 85.5 t contrapeso, contrapeso central de 36 t y contrapeso flotante de 120 t. Estas tablas de cargas sirven únicamente como información. Para trabajos de elevación consultar las tablas de cargas de la cabina o el manual.

Tablas de cargas - plumín abatible (N° 1916.xx)

Pluma principal con ángulo 65°

Contrapeso flotante de 120 t a un radio de 13 m

Pluma principal 43.4 m

Radio (m)	Longitud de plumín (m)							
	20	29	41	53	62	71	83	95
33.1	t	t	t	t	t	t	t	t
38	47.3							
40	44.2							
46	42.6	34.8						
48		31.1	21.0					
55		28.9	20.6					
60			17.9	13.9				
65			16.3	13.6	10.8			
70				13.3	10.6	7.5		
75				12.4	10.5	7.4	4.7	
80					10.2	7.3	4.5	
85					9.8	7.2	4.4	2.4
90						7.2	4.2	2.3
95						7.0	4.1	2.1
100							4.0	
100							3.9	

Pluma principal 49.1 m

Radio (m)	Longitud de plumín (m)							
	20	29	41	53	62	71	83	95
35.5	t	t	t	t	t	t	t	t
38	44.4							
42	43.7							
48	41.4	33.8						
50		30.9	20.3					
55		28.9	20.0					
60			18.6	13.5				
65			17.0	13.3	10.3			
70				13.1	10.3	8.2		
75				12.7	10.2	7.2		
80				11.7	10.1	7.2	4.4	
85					10.0	7.1	4.3	2.3
90						7.1	4.2	2.2
95						7.0	4.0	2.1
100							3.9	
100							3.9	

Pluma principal 55.1 m

Radio (m)	Longitud de plumín (m)							
	20	29	41	53	62	71	83	95
38	t	t	t	t	t	t	t	t
44	41.4							
50	39.9	32.3						
55		30.5						
60			19.0					
65			17.5	12.9				
70			16.1	12.8	9.9			
75				12.7	9.9	7.0		
85				12.5	9.9	7.0	4.3	
90					9.8	6.9	4.1	2.2
95						6.9	4.0	2.1
105						6.9	3.9	
105							3.8	

Pluma principal 60.8 m

Radio (m)	Longitud de plumín (m)							
	20	29	41	53	62	71	83	95
40.4	t	t	t	t	t	t	t	t
46	38.5							
48	37.4	29.4						
55	15.1	29.3						
60		27.5	18.6					
65			17.8	12.3				
70			16.6	12.3	9.4			
80				12.2	9.3	6.7		
85				11.5	9.3	6.7	4.1	
90					9.3	6.7	4.0	2.1
95						6.7	3.9	2.0
105						6.7	3.8	
105							3.7	

Pluma principal 66.8 m

Radio (m)	Longitud de plumín (m)							
	20	29	41	53	62	71	83	95
43	t	t	t	t	t	t	t	t
50	35.2							
55	32.3	27.2						
65		25.8	17.9					
70			16.7	11.7				
75			15.7	11.7	8.8			
80				11.7	8.8	6.4		
90				11.7	8.9	6.4	3.9	
100					8.8	6.4	3.8	2.3
105						6.4	3.6	2.1
110							3.6	
110							3.6	

Pluma principal 72.5 m

Radio (m)	Longitud de plumín (m)							
	20	29	41	53	62	71	83	95
43	t	t	t	t	t	t	t	t
50	35.2							
55	32.3	27.2						
65		25.8	17.9					
70			16.7	11.7				
75			15.7	11.7	8.8			
80				11.7	8.8	6.4		
90				11.7	8.9	6.4	3.9	
95					8.8	6.4	3.8	2.3
100						6.4	3.7	2.2
110						6.4	3.6	2.1
110							3.6	

Capacidades de cargas indicadas en toneladas, con plumín abatible (N° 1916.xx), 85.5 t contrapeso, contrapeso central de 36 t y contrapeso flotante de 120 t. Estas tablas de cargas sirven únicamente como información. Para trabajos de elevación consultar las tablas de cargas de la cabina o el manual.

Tablas de cargas - plumín abatible (N° 1916.xx)

Pluma principal con ángulo 45°

Contrapeso flotante de 120 t a un radio de 13 m

Pluma principal 43.4 m

Radio (m)	Longitud de plumín (m)						
	20	29	41	53	62	71	83
50.2	36.4						
60		29.2					
70			16.9				
80				12.0			
85				11.9	9.1		
90					9.1		
95						6.3	
100						6.3	
105							3.5
110							3.5

Pluma principal 49.1 m

Radio (m)	Longitud de plumín (m)						
	20	29	41	53	62	71	83
54.2	32.8						
55	32.3						
65		26.1					
75			16.6				
85				11.6			
90					8.8		
95					8.8		
100						6.1	
105						6.1	
110							3.3
115							3.3

Pluma principal 55.1 m

Radio (m)	Longitud de plumín (m)						
	20	29	41	53	62	71	83
58.5	29.4						
60	28.5						
70		15.1					
80			16.3				
90				11.1			
95					8.4		
100					8.4		
105						5.9	
110						5.9	
115							3.2
120							3.2

Pluma principal 60.8 m

Radio (m)	Longitud de plumín (m)						
	20	29	41	53	62	71	83
62.5	25.9						
65	24.7						
70		22.0					
80			16.0				
85			15.9				
90				10.6			
95				10.6			
100					8.0		
105					8.0	5.6	
110						5.6	
115							3.0
125							3.0

Pluma principal 66.8 m

Radio (m)	Longitud de plumín (m)						
	20	29	41	53	62	71	83
66.8	22.5						
75		18.9					
85			15.4				
90			14.2				
95				10.0			
100				10.0			
105					7.6		
110					7.6	5.3	
115						5.3	
120							2.8
130							2.8

Pluma principal 72.5 m

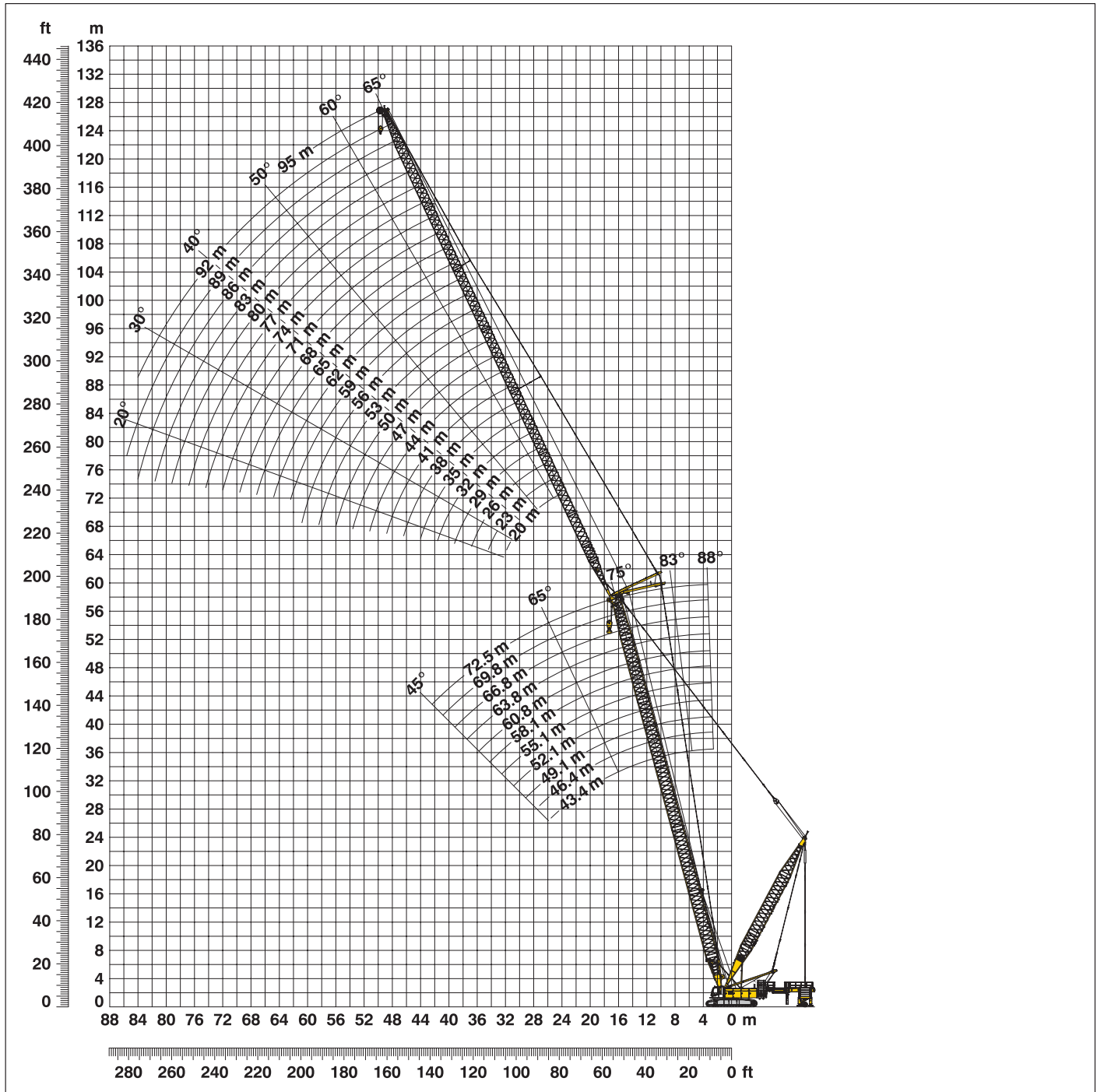
Radio (m)	Longitud de plumín (m)						
	20	29	41	53	62	71	83
70.8	19.6						
80		16.2					
90			12.9				
100				9.0			
105				9.0			
110					7.0		
115						5.0	
120						5.0	
125							2.6
130							2.6

Capacidades de cargas indicadas en toneladas, con plumín abatible (N° 1916.xx), 85.5 t contrapeso, contrapeso central de 36 t y contrapeso flotante de 120 t. Estas tablas de cargas sirven únicamente como información. Para trabajos de elevación consultar las tablas de cargas de la cabina o el manual.

Radio de trabajo - plumín abatible (N° 1916.xx) 78° - 15°

Pluma principal 88° - 45°

Carro de contrapesos de 120 t a un radio de 11.4 m - 15 m



Configuración de pluma principal (43.4 m - 72.5 m) – vea tabla 1 en la pagina 10

Configuración de plumín abatible (20 m - 95 m)

	Longitud	Número de tramos de plumín abatible																									
		20	23	26	29	32	35	38	41	44	47	50	53	56	59	62	65	68	71	74	77	80	83	86	89	92	95
Pie de plumín abatible	7.0 m	1	1	1	1	1	1	1	1	1	1	1	1	1	1	1	1	1	1	1	1	1	1	1	1	1	1
Tramos plumín abatible	3.0 m		1		1		1		1		1		1		1		1		1		1		1		1		1
	6.0 m	1	1		1	1	1		1	1		1	1		1	1		1	1		1	1		1	1		1
	12.0 m			1	1	1	1	2	2	2	2	3	3	3	3	4	4	4	4	5	5	5	5	6	6	6	6
Cabeza plumín abatible	7.0 m	1	1	1	1	1	1	1	1	1	1	1	1	1	1	1	1	1	1	1	1	1	1	1	1	1	1
Longitud de plumín abatible (m)		20	23	26	29	32	35	38	41	44	47	50	53	56	59	62	65	68	71	74	77	80	83	86	89	92	95

Tablas de cargas - plumín abatible (N° 1916.xx)

Pluma principal con ángulo 75°

Carro de contrapesos de 120 t a un radio de 15 m

Pluma principal 43.4 m

Radio (m)	Longitud de plumín (m)							
	20	29	41	53	62	71	83	95
22.9	t	t	t	t	t	t	t	t
26	52.9							
28	49.2							
32	46.7	38.3						
38	41.5	35.4	23.9					
42		30.7	21.8	16.6				
46		26.4	20.2	16.1	12.2			
50			18.5	15.6	11.9	8.6		
55			17.0	14.2	11.6	8.3	5.6	
60				14.1	11.2	8.1	5.4	3.3
65				13.5	10.8	7.9	5.2	3.2
70				12.1	10.4	7.7	4.9	3.0
75					9.9	7.5	4.7	2.8
80						7.3	4.5	2.5
85						7.0	4.2	2.3
90							4.1	2.1
95							3.9	

Pluma principal 49.1 m

Radio (m)	Longitud de plumín (m)							
	20	29	41	53	62	71	83	95
24.4	t	t	t	t	t	t	t	t
30	47.8							
34	43.5	36.1						
40	38.9	33.9	22.9					
42		28.7	21.0	15.9				
44		27.5	20.3	15.7				
46			19.6	15.5	11.7			
50			18.9	15.3	11.6	9.2		
55			17.3	13.9	11.3	8.1		
60			15.5	13.7	11.0	7.9	5.3	
65				13.5	10.8	7.7	5.1	3.1
70				12.4	10.6	7.5	4.9	2.9
75					10.2	7.4	4.6	2.7
80					9.4	7.2	4.4	2.5
85						7.0	4.2	2.3
90							4.0	2.1
95							3.7	

Pluma principal 55.1 m

Radio (m)	Longitud de plumín (m)							
	20	29	41	53	62	71	83	95
26	t	t	t	t	t	t	t	t
28	45.0							
30	43.7							
36	42.3	34.9						
40	37.0	32.4	22.0					
44		28.7	20.9	15.4				
48		26.7	19.7	14.3	11.2			
55			18.4	13.9	11.1	8.0		
60			16.1	13.4	10.7	7.8	5.2	
65				13.2	10.5	7.6	5.0	3.1
70				12.4	10.4	7.4	4.8	2.9
75					10.2	7.3	4.6	2.7
80					9.6	7.1	4.4	2.5
85						6.9	4.2	2.3
90						6.7	4.0	2.1
95							3.9	

Pluma principal 60.8 m

Radio (m)	Longitud de plumín (m)							
	20	29	41	53	62	71	83	95
27.4	t	t	t	t	t	t	t	t
30	40.5							
32	39.7							
38	38.4	32.1						
42	15.1	29.5	20.7					
46		27.3	19.8	13.7				
50		24.5	18.8	13.5	10.5			
55			17.6	13.1	10.4	7.6		
60			16.2	12.8	10.3	7.5	4.9	
65				12.7	10.1	7.3	4.8	2.9
70				12.2	10.0	7.2	4.7	2.8
75				11.0	9.8	7.1	4.5	2.6
80					9.3	6.9	4.3	2.4
85						6.8	4.1	2.3
90						6.5	3.9	2.1
95							3.8	

Pluma principal 66.8 m

Radio (m)	Longitud de plumín (m)							
	20	29	41	53	62	71	83	95
29	t	t	t	t	t	t	t	t
34	36.8							
38	34.8	29.1						
44	31.9	27.8	19.8					
48		24.7	18.8	13.0				
55		22.4	17.9	12.8	9.9			
60			16.1	12.3	9.8	7.2		
65			13.7	12.2	9.7	7.1	4.6	
70				11.9	9.5	7.0	4.5	2.7
75				11.4	9.4	6.8	4.3	2.6
80					9.1	6.7	4.2	2.4
85					8.5	6.5	4.0	2.2
95						6.3	3.8	2.0
100							3.6	

Pluma principal 72.5 m

Radio (m)	Longitud de plumín (m)							
	20	29	41	53	62	71	83	95
30.5	t	t	t	t	t	t	t	t
36	31.9							
40	28.8	25.2						
46	26.2	23.4	18.2					
48		21.0	17.4	12.0				
50		20.2	17.0	11.9				
55			16.5	11.8	9.1			
60			15.3	11.5	9.0	6.8		
65			13.5	11.2	9.0	6.7	4.4	
70				10.8	8.8	6.6	4.3	2.6
75				10.2	8.7	6.5	4.1	2.4
80					8.4	6.4	4.0	2.3
85					7.9	6.2	3.8	2.1
90						5.7	3.5	
100							3.3	

Capacidades de cargas indicadas en toneladas, con plumín abatible (N° 1916.xx), 85.5 t contrapeso, contrapeso central de 36 t y carro de contrapesos de 120 t. Estas tablas de cargas sirven únicamente como información. Para trabajos de elevación consultar las tablas de cargas de la cabina o el manual.

Tablas de cargas - plumín abatible (N° 1916.xx)

Pluma principal con ángulo 65°

Carro de contrapesos de 120 t a un radio de 15 m

Pluma principal 43.4 m

Radio (m)	Longitud de plumín (m)							
	20	29	41	53	62	71	83	95
33.1	t	t	t	t	t	t	t	t
38	47.3							
40	44.2							
46	42.6	34.8						
48		31.1	21.0					
55		28.9	20.6					
60			17.9	13.9				
65			16.3	13.6	10.8			
70				13.3	10.6	7.5		
75				12.4	10.5	7.4	4.7	
80					10.2	7.3	4.5	
85					9.8	7.2	4.4	2.4
90						7.2	4.2	2.3
95						7.0	4.1	2.1
100							4.0	
100							3.9	

Pluma principal 49.1 m

Radio (m)	Longitud de plumín (m)							
	20	29	41	53	62	71	83	95
35.5	t	t	t	t	t	t	t	t
38	44.4							
42	43.7							
48	41.4	33.8						
50		30.9	20.3					
55		28.9	20.0					
60			18.6	13.5				
65			17.0	13.3	10.3			
70				13.1	10.3	8.2		
75				12.7	10.2	7.2		
80				11.7	10.1	7.2	4.4	
85					10.0	7.1	4.3	2.3
90						7.1	4.2	2.2
95						7.0	4.0	2.1
100							3.9	
100							3.9	

Pluma principal 55.1 m

Radio (m)	Longitud de plumín (m)							
	20	29	41	53	62	71	83	95
38	t	t	t	t	t	t	t	t
44	41.4							
50	39.9	32.3						
55		30.5						
60			19.0					
65			17.5	12.9				
70			16.1	12.8	9.9			
75				12.7	9.9	7.0		
85				12.5	9.9	7.0	4.3	
90					9.8	6.9	4.1	2.2
95						6.9	4.0	2.1
105						6.9	3.9	
105							3.8	

Pluma principal 60.8 m

Radio (m)	Longitud de plumín (m)							
	20	29	41	53	62	71	83	95
40.4	t	t	t	t	t	t	t	t
46	38.5							
48	37.4	29.4						
55	15.1	29.3						
60		27.5	18.6					
65			17.8	12.3				
70			16.6	12.3	9.4			
80				12.2	9.3	6.7		
85				11.5	9.3	6.7	4.1	
90					9.3	6.7	4.0	2.1
95						6.7	3.9	2.0
105						6.7	3.8	
105							3.7	

Pluma principal 66.8 m

Radio (m)	Longitud de plumín (m)							
	20	29	41	53	62	71	83	95
43	t	t	t	t	t	t	t	t
50	35.2							
55	32.3	27.2						
65		25.8	17.9					
70			16.7	11.7				
75			15.7	11.7	8.8			
80				11.7	8.8	6.4		
90				11.7	8.9	6.4	3.9	
100					8.8	6.4	3.8	2.3
105						6.4	3.6	2.1
110							3.6	
110							3.6	

Pluma principal 72.5 m

Radio (m)	Longitud de plumín (m)							
	20	29	41	53	62	71	83	95
43	t	t	t	t	t	t	t	t
50	35.2							
55	32.3	27.2						
65		25.8	17.9					
70			16.7	11.7				
75			15.7	11.7	8.8			
80				11.7	8.8	6.4		
90				11.7	8.9	6.4	3.9	
95					8.8	6.4	3.8	2.3
100						6.4	3.7	2.2
105						6.4	3.6	2.1
110							3.6	
110							3.6	

Capacidades de cargas indicadas en toneladas, con plumín abatible (N° 1916.xx), 85.5 t contrapeso, contrapeso central de 36 t y carro de contrapesos de 120 t. Estas tablas de cargas sirven únicamente como información. Para trabajos de elevación consultar las tablas de cargas de la cabina o el manual.

Tablas de cargas - plumín abatible (N° 1916.xx)

Pluma principal con ángulo 45°

Carro de contrapesos de 120 t a un radio de 15 m

Pluma principal 43.4 m

Radio (m)	Longitud de plumín (m)						
	20	29	41	53	62	71	83
50.2	41.0						
60		30.4					
70			16.9				
80				12.0			
85				11.9	9.1		
90					9.1		
95						6.3	
100						6.3	
105							3.5
110							3.5

Pluma principal 49.1 m

Radio (m)	Longitud de plumín (m)						
	20	29	41	53	62	71	83
54.2	37.2						
55	36.6						
65		28.7					
75			16.6				
85				11.6			
90					8.8		
95					8.8		
100						6.1	
105						6.1	
110							3.3
115							3.3

Pluma principal 55.1 m

Radio (m)	Longitud de plumín (m)						
	20	29	41	53	62	71	83
58.5	32.6						
60	31.7						
70		15.1					
80			16.3				
90				11.1			
95					8.4		
100					8.4		
105						5.9	
110						5.9	
115							3.2
120							3.2

Pluma principal 60.8 m

Radio (m)	Longitud de plumín (m)						
	20	29	41	53	62	71	83
62.5	29.1						
65	27.7						
70		24.9					
80			16.0				
85			15.9				
90				10.6			
95				10.6			
100					8.0		
105					8.0	5.6	
110						5.6	
115							3.0
125							3.0

Pluma principal 66.8 m

Radio (m)	Longitud de plumín (m)						
	20	29	41	53	62	71	83
66.8	25.4						
75		21.6					
85			15.4				
90			14.2				
95				10.0			
100				10.0			
105					7.6		
110					7.6	5.3	
115						5.3	
120							2.8
130							2.8

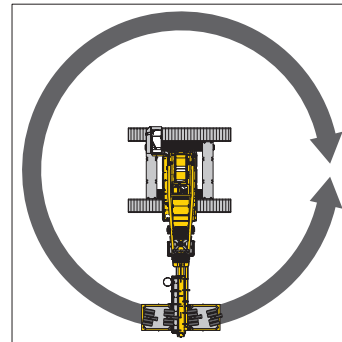
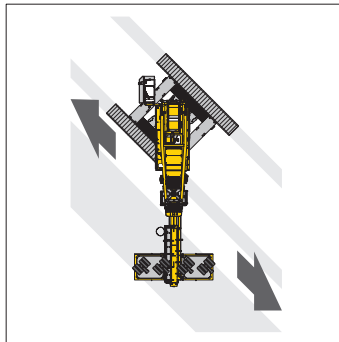
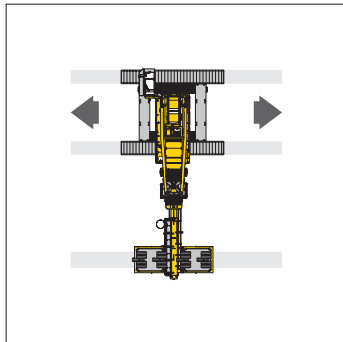
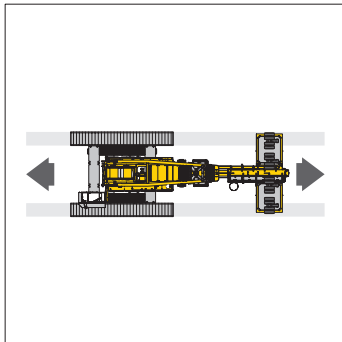
Pluma principal 72.5 m

Radio (m)	Longitud de plumín (m)						
	20	29	41	53	62	71	83
70.8	22.4						
80		18.6					
90			12.9				
100				9.0			
105				9.0			
110					7.0		
115						5.0	
120						5.0	
125							2.6
130							2.6

Capacidades de cargas indicadas en toneladas, con plumín abatible (N° 1916.xx), 85.5 t contrapeso, contrapeso central de 36 t y carro de contrapesos de 120 t. Estas tablas de cargas sirven únicamente como información. Para trabajos de elevación consultar las tablas de cargas de la cabina o el manual.

Modos de traslación

Carro de contrapesos



Con ejes de ruedas móviles

Con ejes de ruedas bloqueadas

