

EN-US

Derrick for 331 US t crane

LR 1106.03.09

www.liebherr.com

LIEBHERR

Crawler cranes



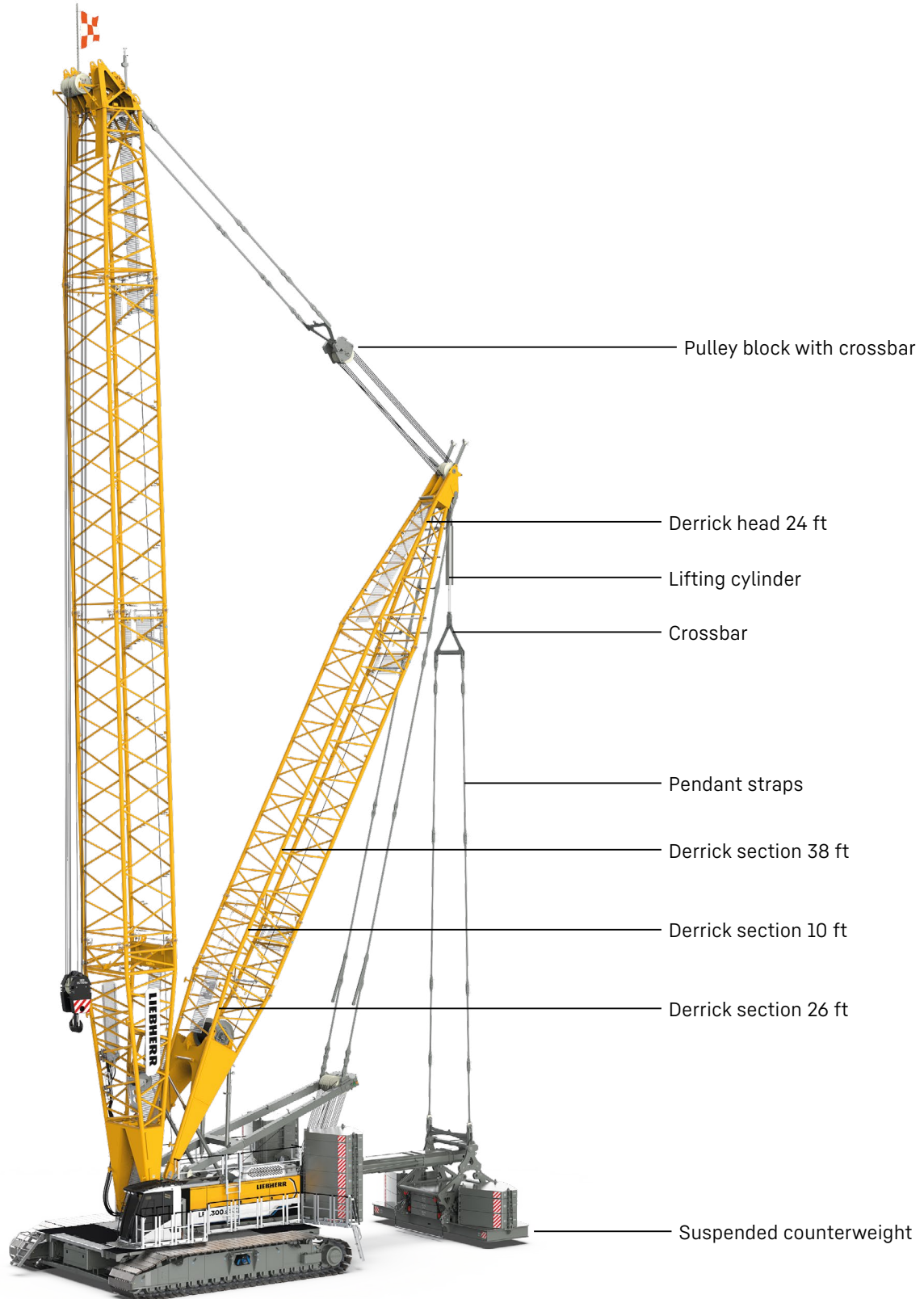
| | |
|---|----|
| Concept and characteristics | 3 |
| Dimensions | 7 |
| Transport dimensions and weights | 8 |
| Boom combinations | 10 |
| Main boom 2821.XX (41-110 m) | 12 |
| Luffing jib 2316.XX (20-113 m) | 14 |
| Luffing jib 1916.XX (20-95 m) | 20 |
| Fixed jib 1507.20 (8 m) | 26 |
| Fixed jib 0906.21 (7 m) | 28 |
| Fixed jib 1713.XX (14-35 m) | 30 |
| Fixed jib 1008.XX (11-26 m) | 34 |

Remarks

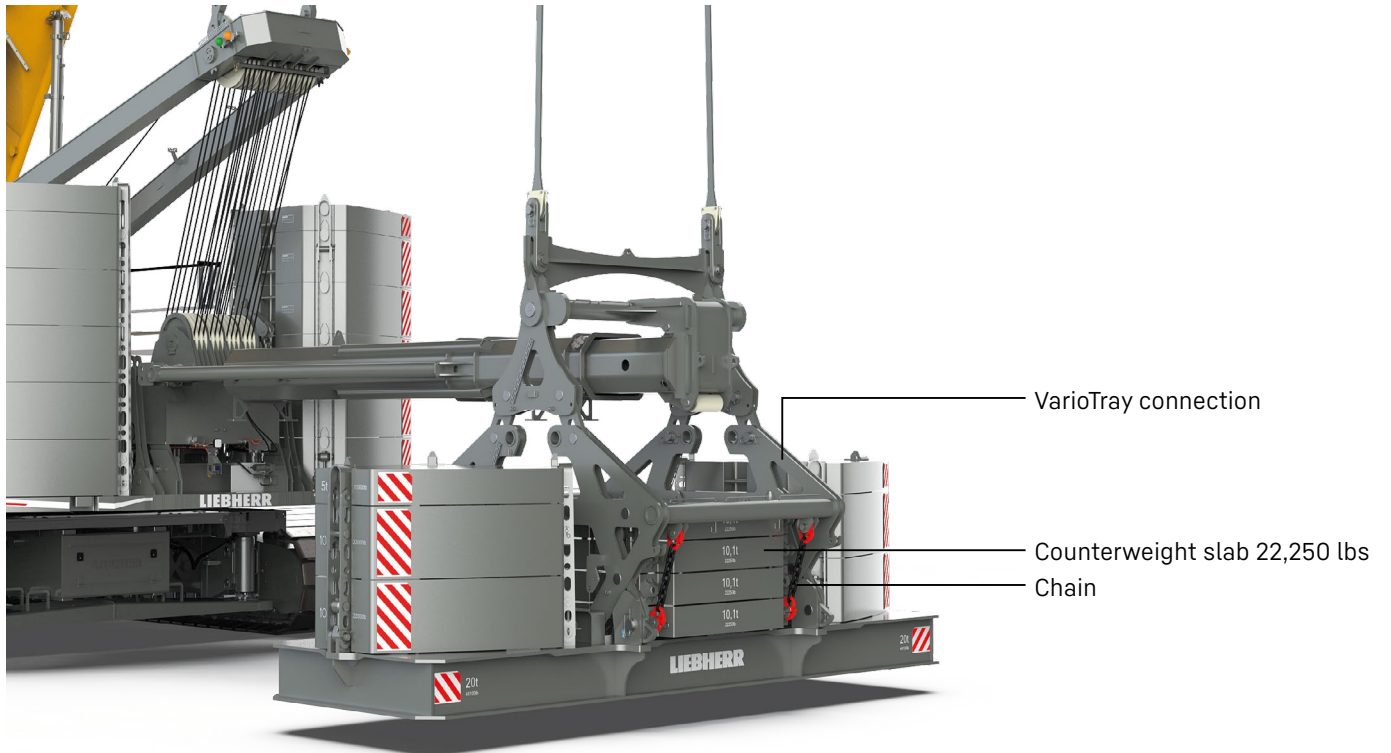
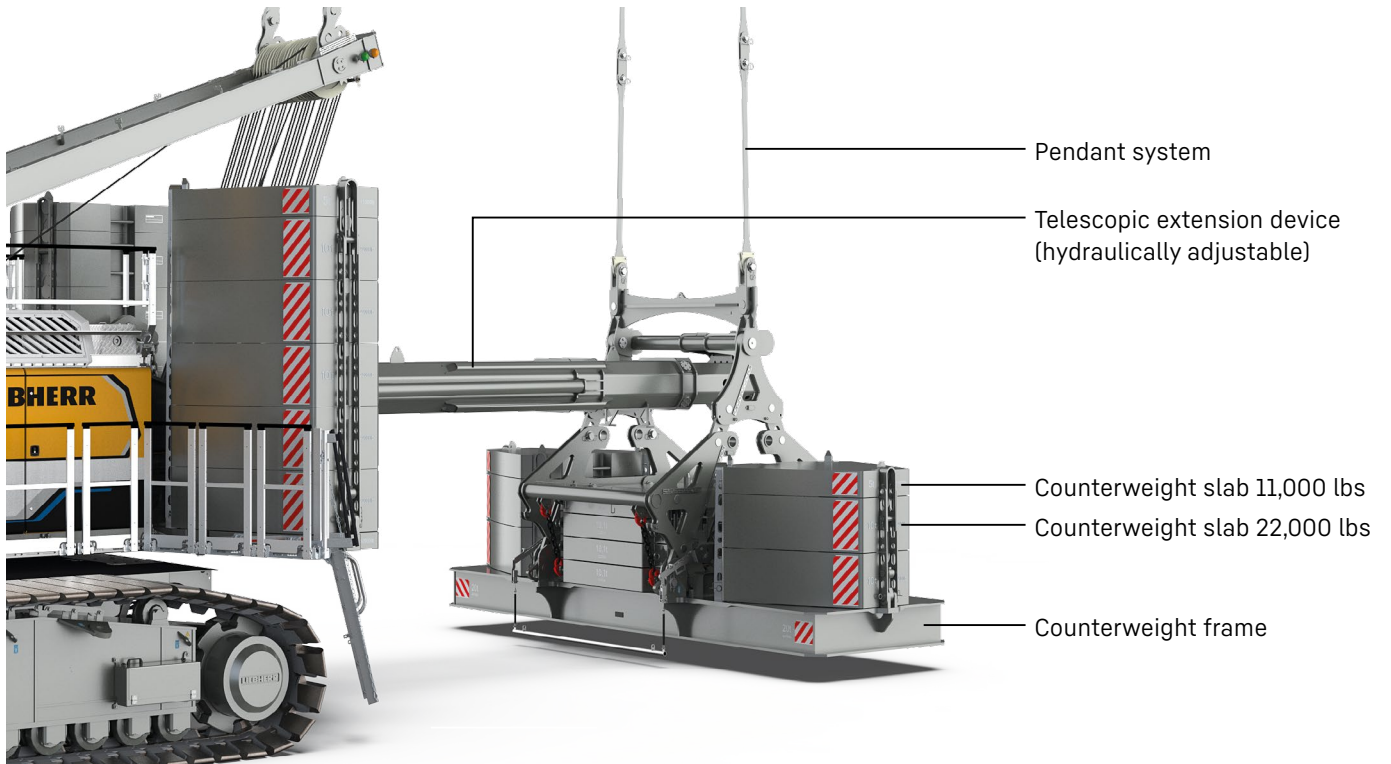
- The load capacities stated are valid for lifting operation only (corresponding with crane classification according to ISO 4301-1, crane group A1).
- Machine is standing on firm, horizontal ground.
- The weight of the lifting device (pulley block, hoist ropes, shackles, etc.) must be deducted from the load capacity.
- Additional equipment on boom (e.g. walkways) must be deducted from the load capacity.
- The max. admissible wind speed can be preselected in the LML software and referred to in the load chart.
- Working radii are measured from centre of swing ring and under load.
- The lifting capacities are valid for 360 degrees of swing.
- Calculation of stability under load is based on ANSI/ASME B 30.5 load ratings as well as ISO 4305 Table 2 and tested according to SAE J765 and SAE J987.
- Weights may vary depending on the delivered configuration of the machine, filling level of the tanks, as well as generally valid tolerances.
- The illustrations in this brochure may include options which are not within the standard scope of supply of the machine.
- Subject to technical change without notice.

Concept and characteristics

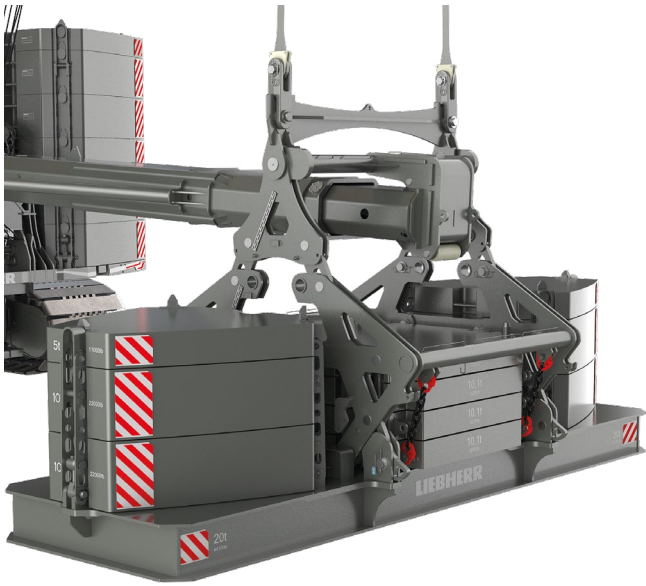
Derrick equipment with suspended counterweight



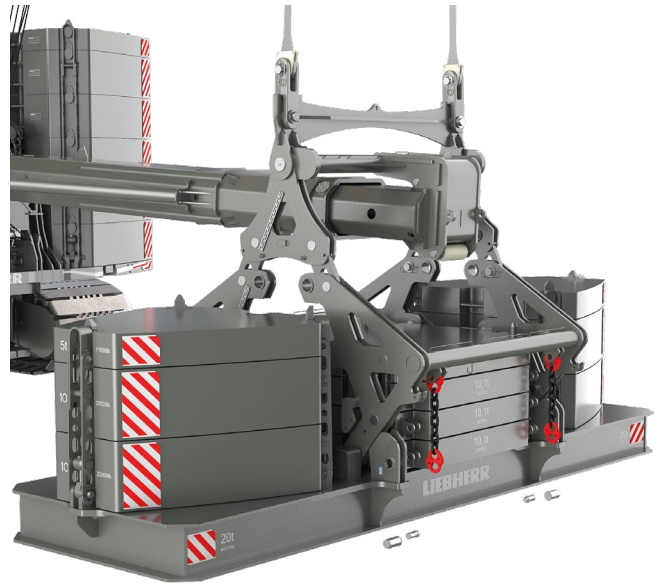
Suspended counterweight



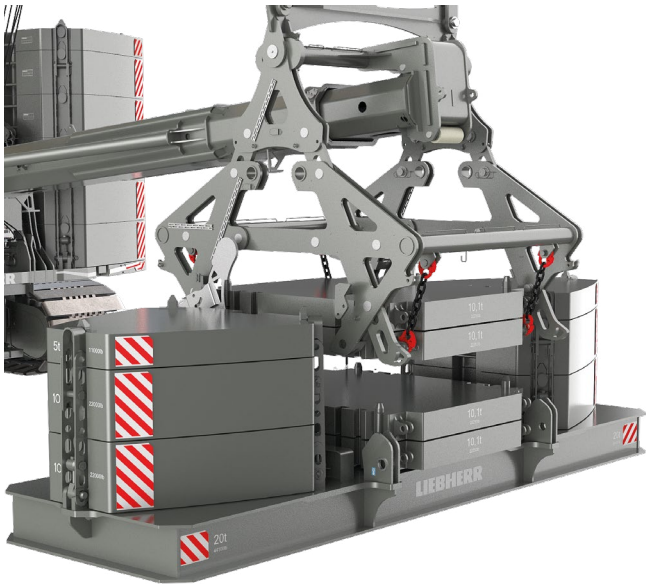
How VarioTray works



Suspended counterweight is positioned on the ground.

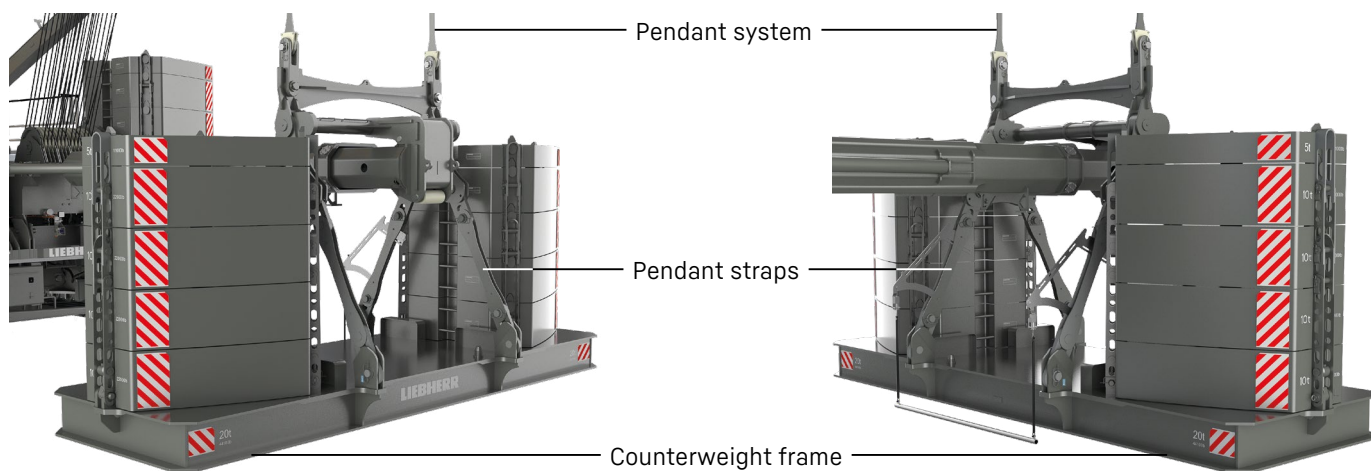


Unbolting of the VarioTray connection and the 22,250-lbs counterweight slabs.



Counterweights required for the lift are bolted to the VarioTray connection.
No auxiliary crane is required to change the 22,250-lbs counterweights.

Standard connection



Standard connection: The counterweight frame is connected to the pendant system via the pendant straps.

Overview and conversion options

Overview derrick for 331 US t crane / 440 US t crane

| | 331 US t crane | 440 US t crane |
|----------------------|----------------|----------------|
| Standard connection | ✓ | - |
| VarioTray connection | ✓ | ✓ |

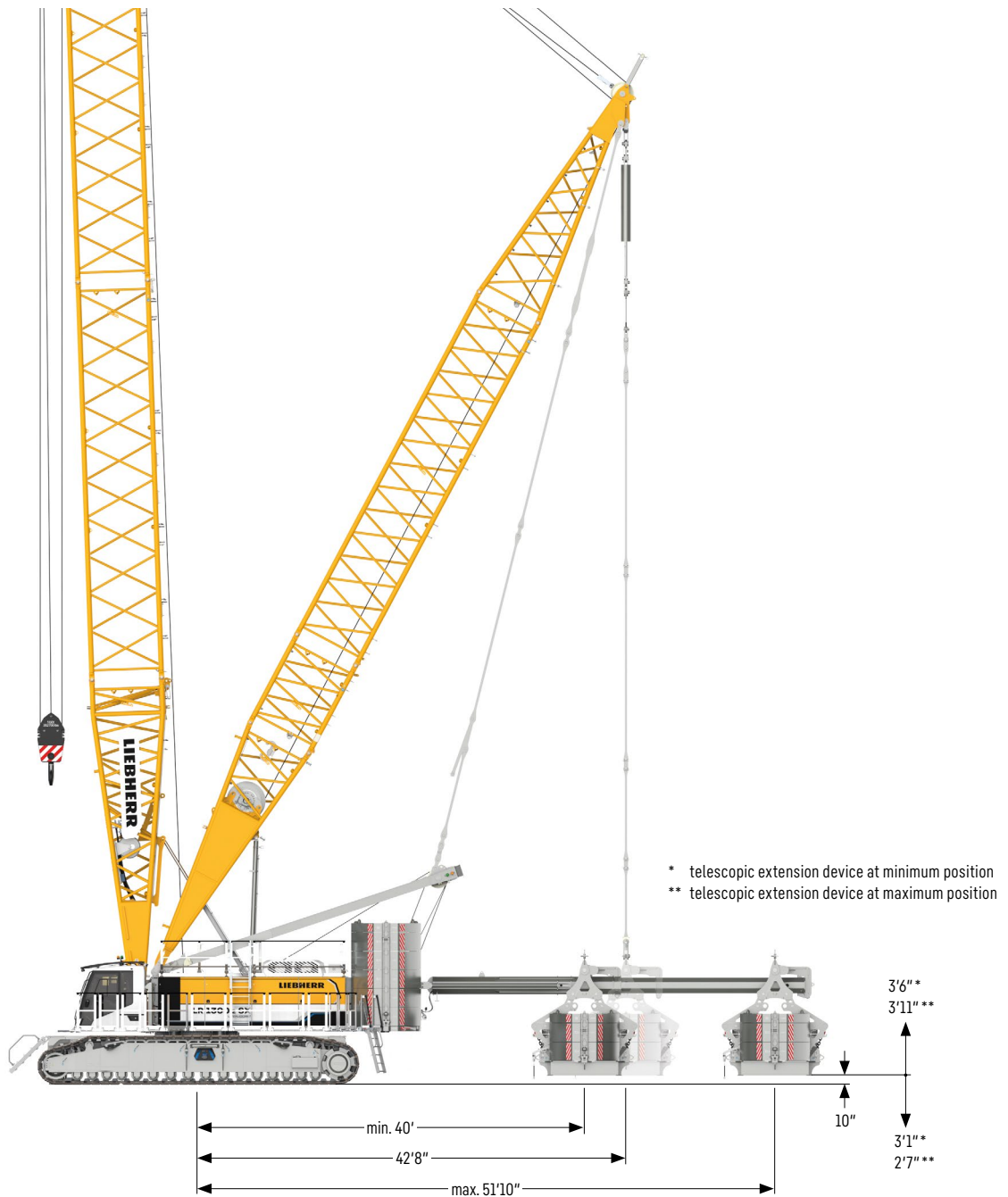
Derrick conversion option for 331 US t crane / 440 US t crane

| | 331 US t crane | 440 US t crane |
|-----------------------------|----------------|----------------|
| Telescopic extension device | | |

By using the correct adapter, the extension device can be used for both the 331 US t and the 440 US t crane.

Dimensions

Derrick equipment with suspended counterweight

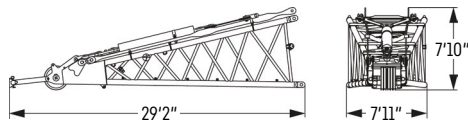


Telescopic extension device (hydraulic)

The hydraulic extension device is continuously adjustable from 40 to 51.8 ft.

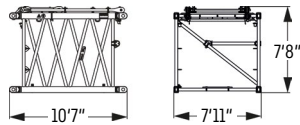
Transport dimensions and weights

Derrick equipment 2220.xx



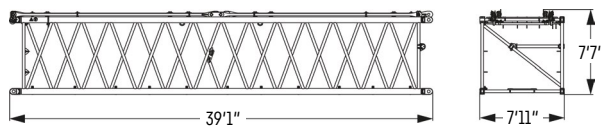
Derrick head 24 ft (No. 2220.22)

| | |
|--|-----------|
| Weight including lifting cylinder with crossbar, including pulley block with crossbar | lbs 9,546 |
|--|-----------|



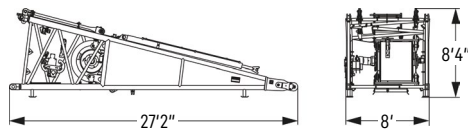
Derrick section 10 ft (No. 2220.24)

| | |
|-----------------------------|-----------|
| Weight incl. pendant straps | lbs 2,657 |
|-----------------------------|-----------|



Derrick section 38 ft (No. 2220.22)

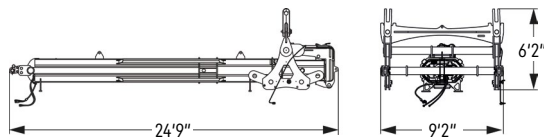
| | |
|-----------------------------|-----------|
| Weight incl. pendant straps | lbs 7,302 |
|-----------------------------|-----------|



Derrick section 26 ft (No. 2220.24)

| | |
|-----------------------|------------|
| Weight including rope | lbs 17,505 |
|-----------------------|------------|

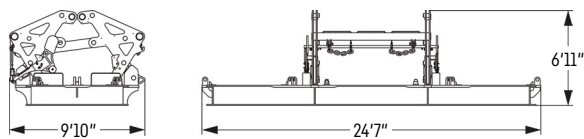
Telescopic extension device



Telescopic extension device

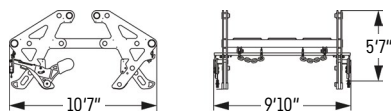
| | |
|--------|------------|
| Weight | lbs 13,283 |
|--------|------------|

VarioTray connection transport options



VarioTray connection with counterweight frame

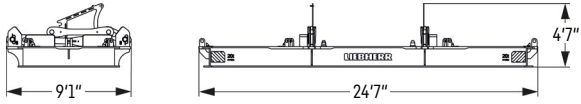
| | |
|--------|------------|
| Weight | lbs 49,882 |
|--------|------------|



VarioTray connection

| | |
|--------|-----------|
| Weight | lbs 5,789 |
|--------|-----------|

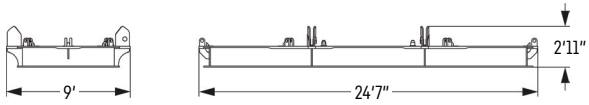
Standard connection transport option



Standard connection

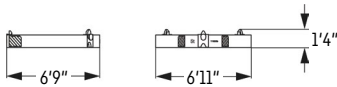
| | |
|--------|------------|
| Weight | lbs 44,983 |
|--------|------------|

Counterweight



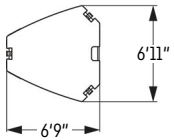
Counterweight frame

| | |
|--------|------------|
| Weight | lbs 44,100 |
|--------|------------|



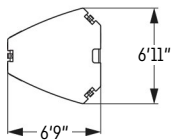
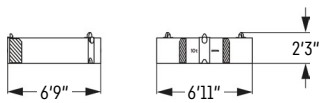
Counterweight slab

| | |
|----------------|------------|
| VarioTray (2x) | lbs 11,000 |
| Standard (2x) | |



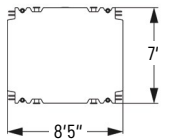
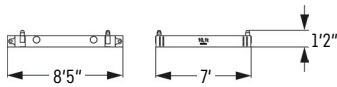
Counterweight slab

| | |
|----------------|------------|
| VarioTray (4x) | lbs 22,000 |
| Standard (8x) | |

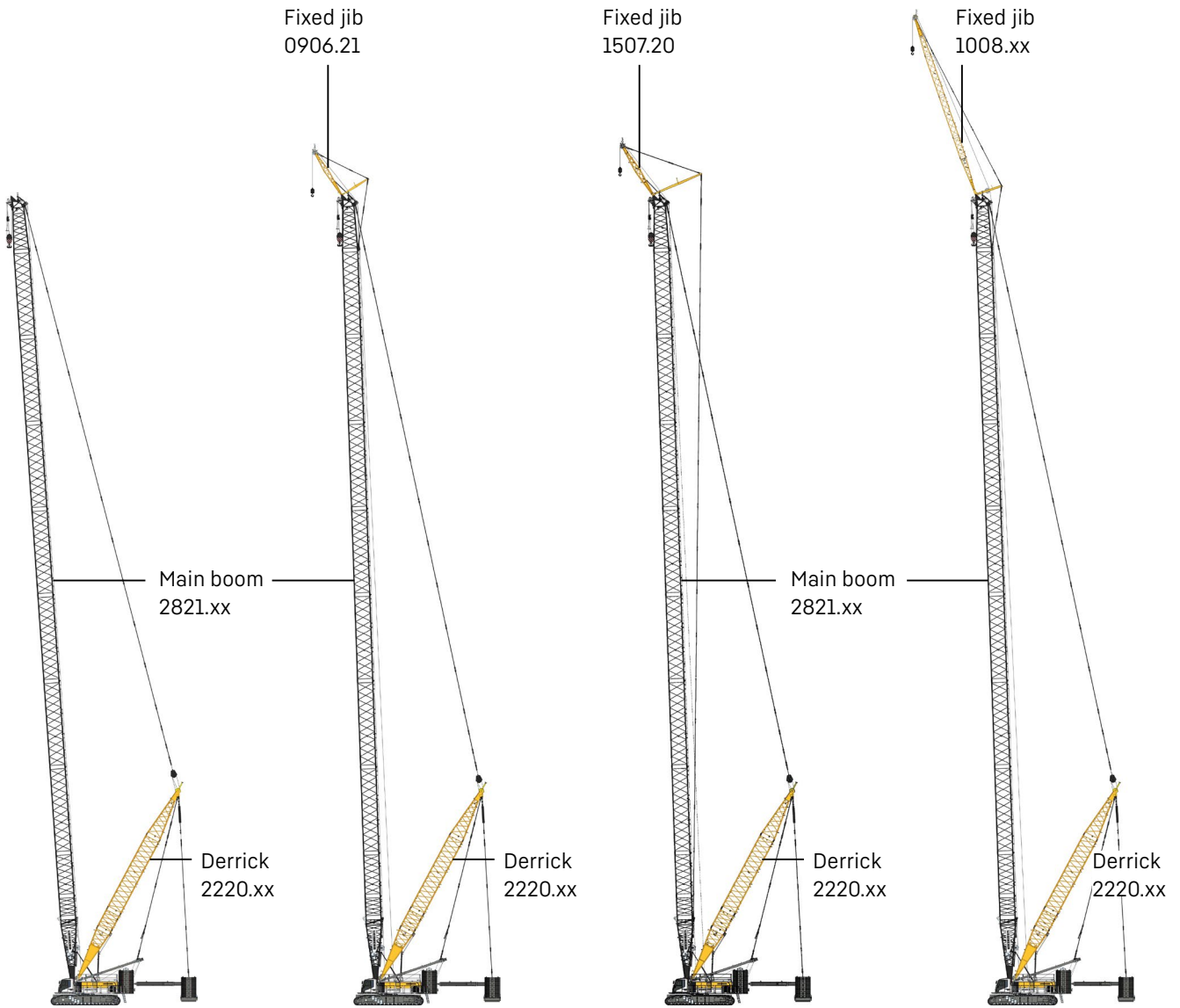


Counterweight slab for optional VarioTray connection

| | |
|----------------|------------|
| VarioTray (4x) | lbs 22,250 |
| Standard (0x) | |



Boom combinations

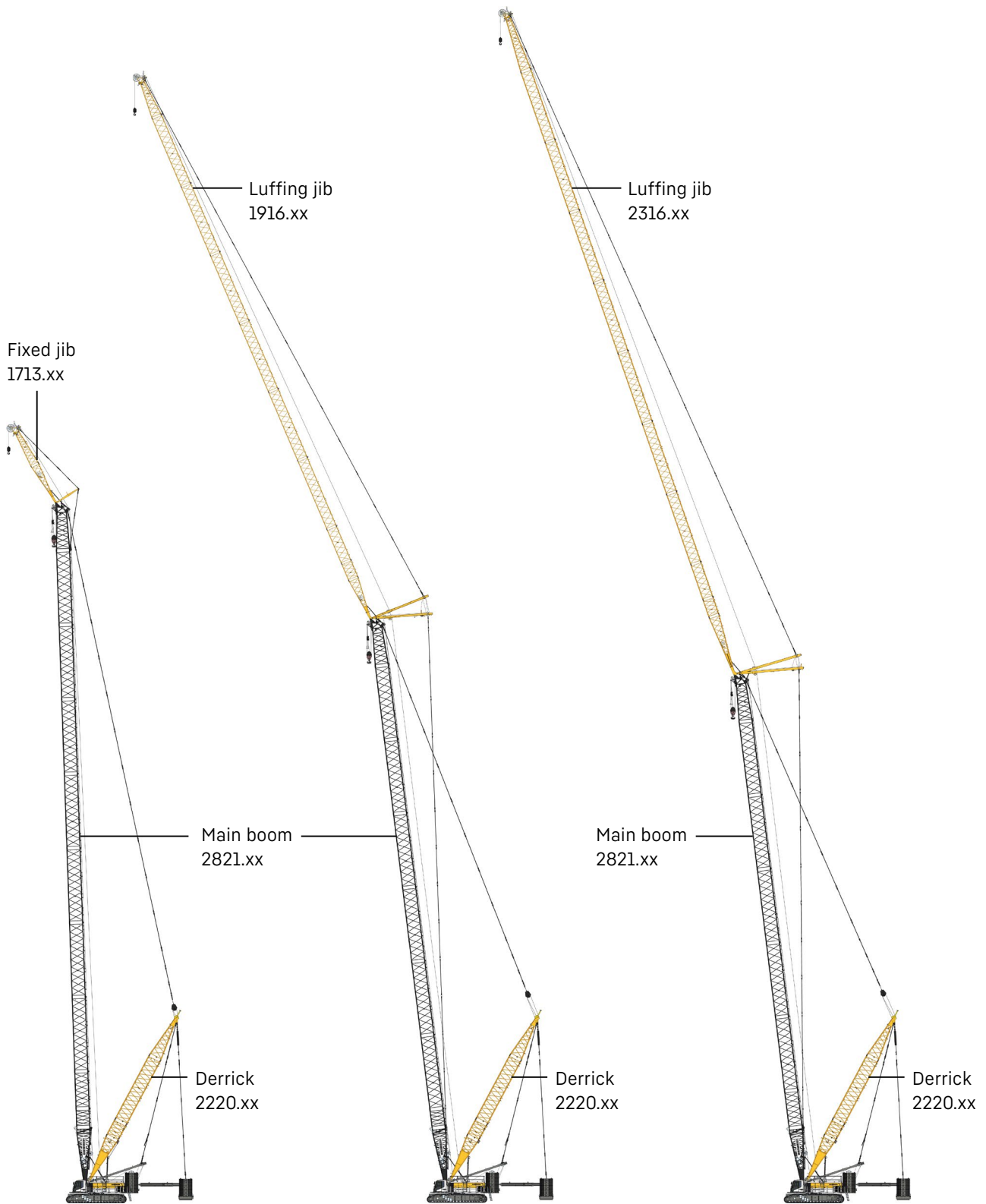


| Main boom | |
|---------------------------------|--------|
| Mode 6 | |
| Max. length | ft 361 |
| Further information on page 12. | |

| Main boom + fixed jib | |
|---------------------------------|--------|
| Mode 8 | |
| Max. combination | |
| 2821.xx | ft 361 |
| 0906.21 | ft 23 |
| Total length | ft 384 |
| Further information on page 28. | |

| Main boom + fixed jib | |
|---------------------------------|--------|
| Mode 8 | |
| Max. combination | |
| 2821.xx | ft 361 |
| 1507.20 | ft 26 |
| Total length | ft 387 |
| Further information on page 26. | |

| Main boom + fixed jib | |
|---------------------------------|--------|
| Mode 8 | |
| Max. combination | |
| 2821.xx | ft 361 |
| 1008.xx | ft 85 |
| Total length | ft 446 |
| Further information on page 34. | |



Main boom + fixed jib

Mode 8

Max. combination

| | | | |
|---------------------|-----------|------------|------------|
| 2821.xx | ft | 331 | 361 |
| 1713.xx | ft | 115 | 46 |
| Total length | ft | 446 | 407 |

Further information on page 30.

Main boom + luffing jib

Mode 9

Max. combination

| | | | |
|---------------------|-----------|------------|--|
| 2821.xx | ft | 302 | |
| 1916.xx | ft | 312 | |
| Total length | ft | 614 | |

Further information on page 20.

Main boom + luffing jib

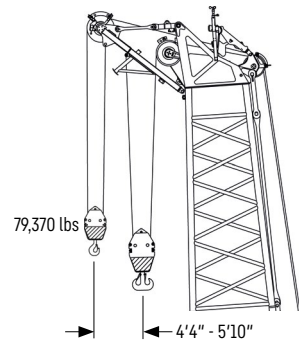
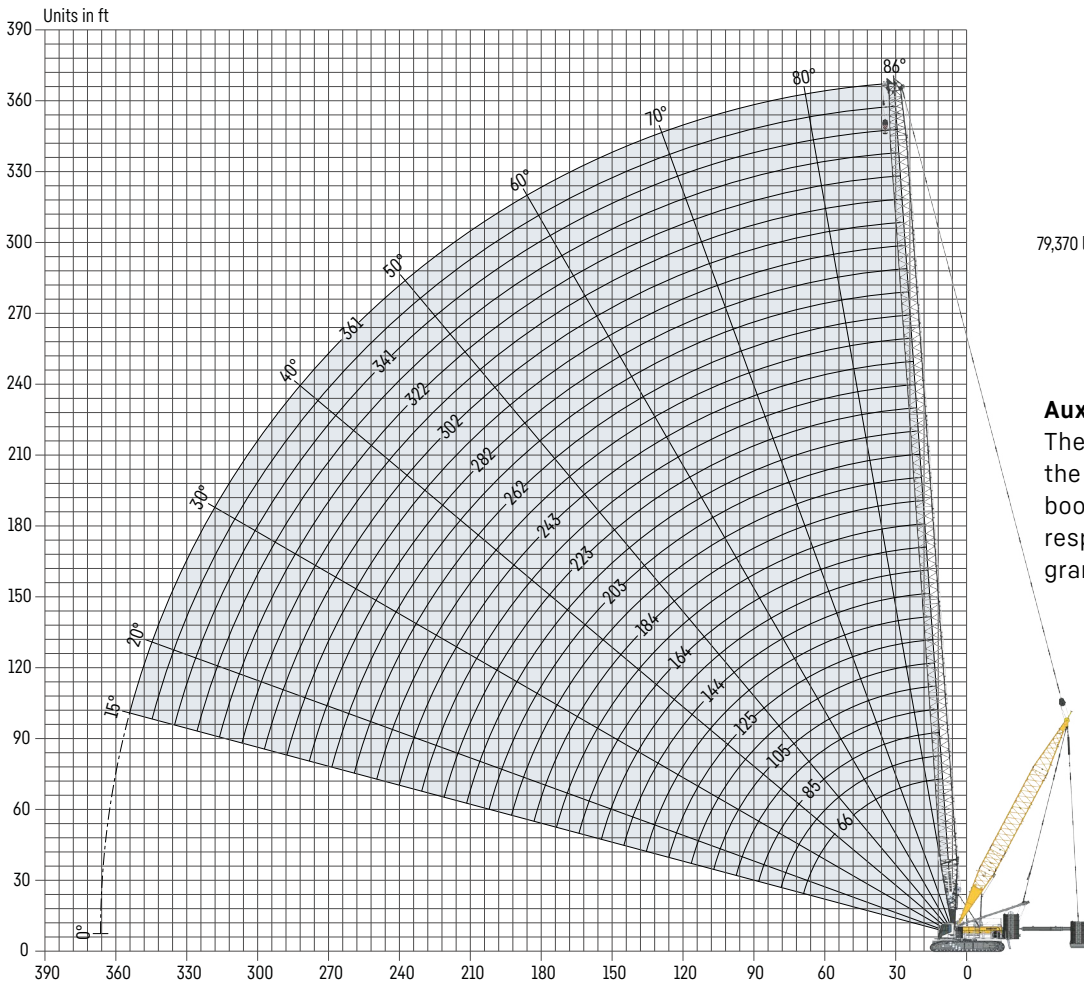
Mode 9

Max. combination

| | | | |
|---------------------|-----------|------------|------------|
| 2821.xx | ft | 272 | 282 |
| 2316.xx | ft | 371 | 322 |
| Total length | ft | 643 | 604 |

Further information on page 14.

Main boom 2821.XX (134-361 ft)



Auxiliary jib 79,370 lbs (option)
 The maximum capacity of the auxiliary jib for the main boom is 79,370 lbs. The corresponding load chart is programmed in the LML system.

Main boom configuration 2821.xx

| Boom section | Amount of boom sections | | | | | | | | | | | | |
|-------------------------|-------------------------|------------|------------|------------|------------|------------|------------|------------|------------|------------|------------|------------|---|
| Boom foot 33 ft | 1 | 1 | 1 | 1 | 1 | 1 | 1 | 1 | 1 | 1 | 1 | 1 | 1 |
| Boom section 10 ft | | 1 | | 1 | | 1 | | 1 | | 1 | | 1 | |
| Boom section 20 ft | | | 1 | 1 | | | 1 | 1 | | | 1 | 1 | |
| Boom section 40 ft | 2 | 2 | 2 | 2 | 3 | 3 | 3 | 3 | 4 | 4 | 4 | 4 | 4 |
| Boom head 23 ft | 1 | 1 | 1 | 1 | 1 | 1 | 1 | 1 | 1 | 1 | 1 | 1 | 1 |
| Boom length [ft] | 134 | 144 | 154 | 164 | 174 | 184 | 194 | 203 | 213 | 223 | 233 | 243 | |
| Auxiliary jib | ✓ | ✓ | ✓ | ✓ | ✓ | ✓ | ✓ | ✓ | ✓ | ✓ | ✓ | ✓ | ✓ |
| Boom foot 33 ft | 1 | 1 | 1 | 1 | 1 | 1 | 1 | 1 | 1 | 1 | 1 | 1 | 1 |
| Boom section 10 ft | | 1 | | 1 | | 1 | | 1 | | 1 | | 1 | |
| Boom section 20 ft | | | 1 | 1 | | | 1 | 1 | | | 1 | 1 | |
| Boom section 40 ft | 5 | 5 | 5 | 5 | 6 | 6 | 6 | 6 | 7 | 7 | 7 | 7 | 7 |
| Boom head 23 ft | 1 | 1 | 1 | 1 | 1 | 1 | 1 | 1 | 1 | 1 | 1 | 1 | 1 |
| Boom length [ft] | 253 | 262 | 272 | 282 | 292 | 302 | 312 | 322 | 331 | 341 | 351 | 361 | |
| Auxiliary jib | ✓ | ✓ | ✓ | ✓ | ✓ | ✓ | ✓ | ✓ | ✓ | ✓ | ✓ | ✓ | ✓ |

Actual lengths of boom sections are metric (e.g. 3 m, 6 m). The figures shown above are approximate conversions to feet.

Load capacities with main boom

Load capacity in 1000 lbs

| | Boom length [ft] | | | | | | | | | | | | |
|-------|------------------|-------|-------|-------|-------|-------|-------|-------|-------|-------|-------|-------|--|
| | 135 | 154 | 174 | 194 | 213 | 233 | 253 | 272 | 292 | 312 | 331 | 361 | |
| 18.89 | 662.4 | | | | | | | | | | | | |
| 30 | 662.4 | 591.0 | 524.6 | 461.9 | 405.6 | 357.4 | 314.7 | 274.3 | 238.0 | | | | |
| 40 | 605.9 | 583.7 | 519.2 | 455.2 | 401.4 | 355.0 | 314.7 | 274.3 | 238.0 | 207.8 | 182.3 | 151.0 | |
| 50 | 465.0 | 463.8 | 462.7 | 445.7 | 399.7 | 354.7 | 314.7 | 274.3 | 238.0 | 207.8 | 182.3 | 151.0 | |
| 55 | 415.7 | 414.4 | 413.3 | 411.8 | 392.4 | 354.5 | 314.7 | 274.3 | 238.0 | 207.8 | 182.3 | 151.0 | |
| 60 | 386.7 | 374.5 | 373.4 | 371.8 | 370.5 | 346.8 | 314.4 | 274.3 | 238.0 | 207.8 | 182.3 | 151.0 | |
| 65 | 352.2 | 351.1 | 339.9 | 338.4 | 337.0 | 335.4 | 307.3 | 273.2 | 238.0 | 207.8 | 182.3 | 151.0 | |
| 70 | 323.1 | 322.0 | 320.9 | 310.1 | 308.8 | 307.1 | 301.0 | 269.0 | 237.3 | 207.8 | 182.3 | 151.0 | |
| 75 | 298.2 | 297.0 | 296.0 | 286.0 | 284.6 | 283.0 | 281.5 | 265.3 | 236.0 | 207.8 | 182.3 | 151.0 | |
| 80 | 276.7 | 275.5 | 274.5 | 273.1 | 263.4 | 261.8 | 260.3 | 258.6 | 234.8 | 207.8 | 182.3 | 151.0 | |
| 85 | 257.9 | 256.7 | 255.7 | 254.3 | 253.0 | 243.6 | 242.1 | 240.4 | 233.7 | 207.8 | 182.3 | 151.0 | |
| 90 | 241.0 | 239.8 | 238.8 | 237.4 | 236.1 | 234.5 | 226.1 | 224.3 | 222.8 | 207.8 | 182.3 | 151.0 | |
| 95 | 226.3 | 225.2 | 224.2 | 222.7 | 221.5 | 219.9 | 211.5 | 209.8 | 208.2 | 206.4 | 182.3 | 151.0 | |
| 100 | 212.9 | 211.8 | 210.7 | 209.3 | 208.0 | 206.5 | 205.0 | 196.8 | 195.4 | 193.8 | 182.3 | 151.0 | |
| 105 | 200.8 | 199.7 | 198.7 | 197.3 | 196.0 | 194.7 | 193.3 | 191.6 | 183.8 | 182.1 | 180.4 | 151.0 | |
| 110 | 190.2 | 189.0 | 188.1 | 186.6 | 185.4 | 183.8 | 182.4 | 180.7 | 179.2 | 171.5 | 169.8 | 151.0 | |
| 115 | 180.0 | 179.1 | 178.1 | 176.7 | 175.4 | 173.9 | 172.4 | 170.8 | 169.2 | 162.2 | 160.6 | 151.0 | |
| 120 | 168.6 | 170.0 | 169.0 | 167.6 | 166.4 | 164.8 | 163.7 | 162.1 | 160.5 | 158.8 | 151.8 | 149.0 | |
| 125 | 158.1 | 162.0 | 161.0 | 159.6 | 158.4 | 156.8 | 155.4 | 153.7 | 152.2 | 150.5 | 148.9 | 141.0 | |
| 130 | 147.6 | 154.3 | 153.3 | 152.0 | 150.7 | 149.2 | 147.7 | 146.1 | 144.5 | 142.8 | 141.2 | 133.5 | |
| 135 | 136.9 | 147.2 | 146.3 | 144.9 | 143.6 | 142.1 | 140.7 | 139.0 | 137.5 | 135.8 | 134.2 | 131.6 | |
| 145 | | 132.2 | 133.6 | 132.2 | 131.3 | 129.8 | 128.4 | 126.7 | 125.2 | 123.5 | 121.9 | 119.2 | |
| 155 | | 115.6 | 122.8 | 121.5 | 120.3 | 118.8 | 117.4 | 115.8 | 114.2 | 112.5 | 110.9 | 108.2 | |
| 170 | | | 105.8 | 107.5 | 106.3 | 104.8 | 103.5 | 101.8 | 100.3 | 99.0 | 97.4 | 94.6 | |
| 180 | | | | 99.4 | 98.6 | 97.1 | 95.8 | 94.2 | 92.6 | 91.0 | 89.4 | 86.6 | |
| 190 | | | | 90.6 | 91.4 | 89.9 | 88.6 | 87.0 | 85.5 | 83.8 | 82.2 | 79.5 | |
| 200 | | | | | 84.9 | 83.5 | 82.2 | 80.6 | 79.1 | 77.4 | 75.8 | 73.1 | |
| 210 | | | | | 78.0 | 77.6 | 76.4 | 74.8 | 73.3 | 71.6 | 70.1 | 67.4 | |
| 220 | | | | | | 72.3 | 71.1 | 69.5 | 68.0 | 66.4 | 65.0 | 62.3 | |
| 230 | | | | | | 67.0 | 66.2 | 64.8 | 63.4 | 61.7 | 60.2 | 57.5 | |
| 240 | | | | | | | 61.8 | 60.3 | 58.9 | 57.3 | 55.7 | 53.1 | |
| 250 | | | | | | | 57.6 | 56.2 | 54.8 | 53.2 | 51.7 | 49.0 | |
| 260 | | | | | | | | 52.4 | 51.1 | 49.4 | 47.9 | 45.3 | |
| 275 | | | | | | | | | 45.9 | 44.4 | 42.9 | 40.2 | |
| 285 | | | | | | | | | 42.8 | 41.2 | 39.8 | 37.2 | |
| 305 | | | | | | | | | | 35.6 | 34.2 | 32.2 | |
| 325 | | | | | | | | | | | 29.5 | 27.1 | |
| 340 | | | | | | | | | | | | 23.7 | |
| 355 | | | | | | | | | | | | 20.6 | |

Carbody counterweight: 126,100 lbs with 3.9 ft flat track pads
 Rear counterweight: 163,200/229,300/273,400 lbs
 Suspended counterweight: 4,400-264,600 lbs / radius 40-51.8 ft

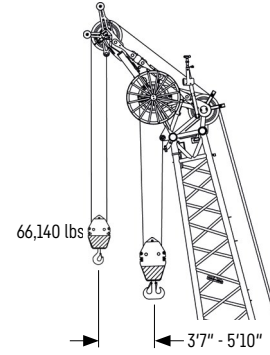
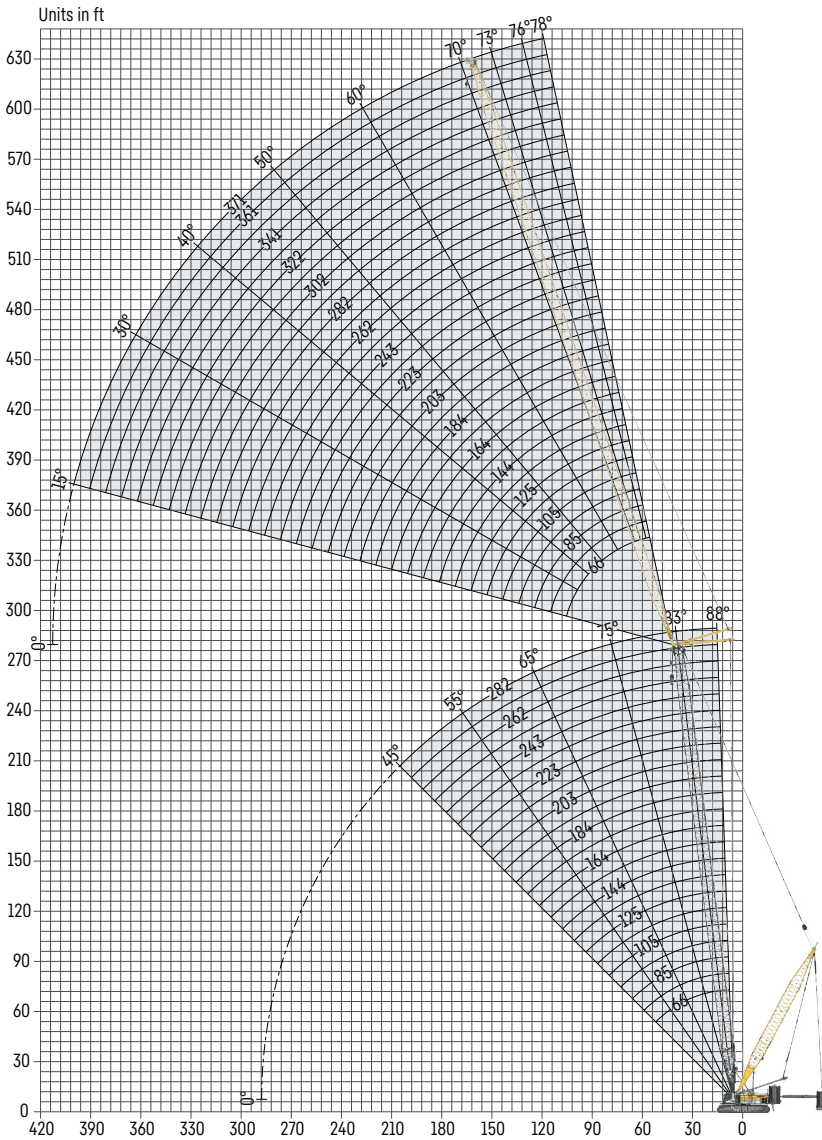
TLT 14168081/0. Above load charts are for reference only. For actual lift duty please refer to load chart in operator's cabin or manual. Otherwise we recommend you to plan your lifting job using Crane Planner 2.0.



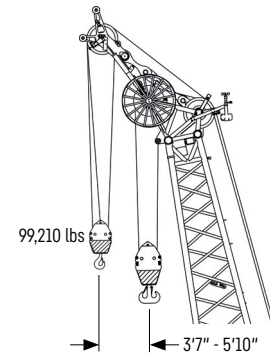
Crane Planner 2.0



Luffing jib 2316.XX (66-371 ft)



Auxiliary jib 66,140 lbs (option)
The maximum capacity of the auxiliary jib for the luffing jib is 66,140 lbs.



Auxiliary jib 99,210 lbs (option)
The maximum capacity of the auxiliary jib for the luffing jib is 99,210 lbs.

Jib configuration 2316.xx

| Jib section | Amount of jib sections | | | | | | | | | | | | | | | |
|------------------------|------------------------|------------|------------|------------|------------|------------|------------|------------|------------|------------|------------|------------|------------|------------|------------|------------|
| Jib foot 33 ft | 1 | 1 | 1 | 1 | 1 | 1 | 1 | 1 | 1 | 1 | 1 | 1 | 1 | 1 | 1 | 1 |
| Jib section 10 ft | | 1 | | 1 | | 1 | | 1 | | 1 | | 1 | | 1 | | 1 |
| Jib section 20 ft | | | 1 | 1 | | | 1 | 1 | | | 1 | 1 | | | 1 | 1 |
| Jib section 40 ft | | | | | 1 | 1 | 1 | 1 | 2 | 2 | 2 | 2 | 3 | 3 | 3 | 3 |
| Jib head 33 ft | 1 | 1 | 1 | 1 | 1 | 1 | 1 | 1 | 1 | 1 | 1 | 1 | 1 | 1 | 1 | 1 |
| Jib length [ft] | 66 | 76 | 85 | 95 | 105 | 115 | 125 | 134 | 144 | 154 | 164 | 174 | 184 | 194 | 203 | 213 |
| Auxiliary jib | ✓ | ✓ | ✓ | ✓ | ✓ | ✓ | ✓ | ✓ | ✓ | ✓ | ✓ | ✓ | ✓ | ✓ | ✓ | ✓ |
| Jib foot 33 ft | 1 | 1 | 1 | 1 | 1 | 1 | 1 | 1 | 1 | 1 | 1 | 1 | 1 | 1 | 1 | 1 |
| Jib section 10 ft | | 1 | | 1 | | 1 | | 1 | | 1 | | 1 | | 1 | | 1 |
| Jib section 20 ft | | | 1 | 1 | | | 1 | 1 | | | 1 | 1 | | | 1 | 1 |
| Jib section 40 ft | 4 | 4 | 4 | 4 | 5 | 5 | 5 | 5 | 6 | 6 | 6 | 6 | 7 | 7 | 7 | 7 |
| Jib head 33 ft | 1 | 1 | 1 | 1 | 1 | 1 | 1 | 1 | 1 | 1 | 1 | 1 | 1 | 1 | 1 | 1 |
| Jib length [ft] | 223 | 233 | 243 | 253 | 262 | 272 | 282 | 292 | 302 | 312 | 322 | 331 | 341 | 351 | 361 | 371 |
| Auxiliary jib | ✓ | ✓ | ✓ | ✓ | ✓ | ✓ | ✓ | ✓ | ✓ | ✓ | ✓ | ✓ | ✓ | ✓ | ✓ | ✓ |

Actual lengths of jib sections are metric (e.g. 3 m, 6 m). The figures shown above are approximate conversions to feet.

Maximum load capacity in 1000 lbs

| | Main boom [ft] | | | | | | | | | | | | | | | |
|-----|----------------|-------|-------|-------|-------|-------|-------|-------|-------|-------|-------|-------|-------|-------|-------|-------|
| | 135 | 144 | 154 | 164 | 174 | 184 | 194 | 203 | 213 | 223 | 233 | 243 | 253 | 262 | 272 | 282 |
| 66 | 258.0 | 258.0 | 258.0 | 258.0 | 258.0 | 258.0 | 258.0 | 246.4 | | | | | | | | |
| 75 | 258.0 | 258.0 | 258.0 | 258.0 | 258.0 | 254.7 | 240.6 | 226.0 | 212.6 | 198.7 | 189.0 | 180.7 | | | | |
| 85 | 258.0 | 258.0 | 258.0 | 258.0 | 250.6 | 240.7 | 223.4 | 209.3 | 196.0 | 186.9 | 179.1 | 168.9 | 158.3 | 149.6 | 140.1 | 132.5 |
| 95 | 258.0 | 255.3 | 249.5 | 241.4 | 226.9 | 218.1 | 205.7 | 192.6 | 184.6 | 177.2 | 163.7 | 156.9 | 148.2 | 139.4 | 131.6 | 123.9 |
| 105 | 249.0 | 240.1 | 231.2 | 224.3 | 211.9 | 201.8 | 189.2 | 178.9 | 170.4 | 165.4 | 155.4 | 147.0 | 138.2 | 131.1 | 123.3 | 117.1 |
| 115 | 226.9 | 220.1 | 212.1 | 204.4 | 195.1 | 184.3 | 175.0 | 164.8 | 158.5 | 153.6 | 145.3 | 136.7 | 129.5 | 122.2 | 115.9 | 109.4 |
| 125 | 212.4 | 204.6 | 194.1 | 188.4 | 178.6 | 170.6 | 161.0 | 153.2 | 146.1 | 143.7 | 135.2 | 128.2 | 120.9 | 115.0 | 108.5 | 103.2 |
| 135 | 194.0 | 186.5 | 178.7 | 170.7 | 164.7 | 157.3 | 149.4 | 141.4 | 135.7 | 132.6 | 125.9 | 119.3 | 113.5 | 107.4 | 99.2 | 97.1 |
| 144 | 179.0 | 171.9 | 163.3 | 156.4 | 151.0 | 146.5 | 137.7 | 131.7 | 125.4 | 123.6 | 117.0 | 112.0 | 106.1 | 101.2 | 96.3 | 92.3 |
| 154 | 163.0 | 156.6 | 151.0 | 144.3 | 139.4 | 133.5 | 128.0 | 121.7 | 117.3 | 114.9 | 109.8 | 104.3 | 99.2 | 94.2 | 90.3 | 86.0 |
| 164 | 150.6 | 144.2 | 138.6 | 134.9 | 129.0 | 124.0 | 118.3 | 113.6 | 109.3 | 108.1 | 102.6 | 98.1 | 92.8 | 88.6 | 84.3 | 80.8 |
| 174 | 137.1 | 131.7 | 128.2 | 124.2 | 119.6 | 114.2 | 110.0 | 105.0 | 99.2 | 99.2 | 95.8 | 91.3 | 87.3 | 83.0 | 79.5 | 75.7 |
| 184 | 126.2 | 121.8 | 118.1 | 115.2 | 110.2 | 106.1 | 101.7 | 98.1 | 95.2 | 93.5 | 89.2 | 85.8 | 81.8 | 78.5 | 74.7 | 71.5 |
| 194 | 115.3 | 111.4 | 109.0 | 105.4 | 99.2 | 97.8 | 94.6 | 90.8 | 89.0 | 86.5 | 83.4 | 79.8 | 76.4 | 73.1 | 69.4 | 66.4 |
| 203 | 106.5 | 103.1 | 99.9 | 97.6 | 94.0 | 91.1 | 87.6 | 85.0 | 82.7 | 80.9 | 77.6 | 74.9 | 71.6 | 68.4 | 65.9 | 63.4 |
| 213 | 97.7 | 94.6 | 92.2 | 88.9 | 87.0 | 84.2 | 81.8 | 78.7 | 76.4 | 74.4 | 71.6 | 68.4 | 66.4 | 64.1 | 61.9 | 59.3 |
| 223 | 90.5 | 87.8 | 85.0 | 82.8 | 80.1 | 78.7 | 75.9 | 73.7 | 71.6 | 69.4 | 67.3 | 64.1 | 61.7 | 60.1 | 57.8 | 56.0 |
| 233 | 83.2 | 80.8 | 78.9 | 76.3 | 73.6 | 71.4 | 68.4 | 66.4 | 64.4 | 62.0 | 59.7 | 57.8 | 55.9 | 54.2 | 52.2 | |
| 243 | 77.2 | 75.0 | 72.8 | 71.4 | 66.4 | 66.4 | 65.6 | 64.3 | 61.8 | 59.8 | 57.7 | 56.1 | 54.0 | 52.5 | 50.7 | 49.2 |
| 253 | 66.4 | 66.4 | 66.4 | 65.4 | 64.2 | 62.4 | 60.9 | 59.2 | 57.6 | 55.6 | 54.1 | 52.1 | 50.6 | 48.8 | 47.2 | 45.5 |
| 262 | 65.5 | 63.9 | 62.2 | 60.9 | 59.6 | 58.6 | 56.6 | 55.0 | 53.5 | 52.3 | 50.4 | 49.0 | 47.3 | 45.9 | 44.3 | 43.1 |
| 272 | 60.4 | 59.2 | 58.1 | 56.5 | 55.6 | 54.1 | 52.8 | 51.1 | 49.9 | 48.3 | 47.2 | 45.9 | 44.5 | 43.0 | 41.8 | 40.4 |
| 282 | 56.3 | 55.3 | 54.0 | 52.9 | 51.6 | 50.5 | 49.1 | 48.0 | 46.6 | 45.5 | 44.4 | 43.5 | 42.0 | 40.8 | 39.4 | 38.2 |
| 292 | 51.3 | 50.6 | 50.0 | 48.7 | 48.0 | 46.7 | 45.8 | 44.5 | 43.6 | 42.5 | 41.5 | 40.2 | 39.2 | 37.8 | 36.7 | 35.4 |
| 302 | 47.3 | 46.7 | 45.9 | 45.3 | 44.4 | 43.6 | 42.5 | 41.6 | 40.7 | 40.1 | 38.6 | 37.5 | 36.3 | 35.3 | 34.1 | 33.1 |
| 312 | 43.0 | 42.6 | 42.2 | 41.3 | 41.0 | 40.2 | 39.6 | 38.6 | 38.0 | 37.2 | 36.3 | 35.2 | 34.2 | 33.1 | 32.1 | 30.9 |
| 322 | 39.5 | 39.2 | 38.6 | 38.2 | 37.7 | 37.4 | 36.7 | 36.1 | 35.4 | 34.8 | 34.0 | 33.3 | 32.2 | 31.3 | 30.1 | 29.2 |
| 331 | 35.9 | 35.6 | 35.5 | 34.8 | 34.7 | 34.0 | 33.7 | 32.9 | 32.6 | 31.8 | 31.4 | 30.6 | 29.9 | 29.0 | 28.2 | |
| 341 | 33.0 | 32.8 | 32.4 | 32.1 | 31.6 | 31.2 | 30.7 | 30.2 | 29.8 | 29.4 | 28.8 | 28.4 | 27.7 | 27.1 | 26.4 | |
| 351 | 29.6 | 29.4 | 29.4 | 28.9 | 28.8 | 28.1 | 28.0 | 27.3 | 27.1 | 26.5 | 26.3 | 25.6 | 25.3 | 24.5 | 24.0 | |
| 361 | 27.0 | 26.7 | 26.4 | 26.2 | 25.9 | 25.6 | 25.3 | 25.0 | 24.5 | 24.2 | 23.7 | 23.4 | 22.8 | 22.4 | 22.0 | |
| 371 | 24.9 | 24.7 | 24.4 | 24.3 | 23.9 | 23.6 | 23.3 | 23.0 | 22.6 | 22.2 | 21.7 | 21.3 | 20.9 | 20.5 | 20.1 | |

Maximum pulley height in ft

| | Main boom [ft] | | | | | | | | | | | | | | | |
|-----|----------------|-------|-------|-------|-------|-------|-------|-------|-------|-------|-------|-------|-------|-------|-------|-------|
| | 135 | 144 | 154 | 164 | 174 | 184 | 194 | 203 | 213 | 223 | 233 | 243 | 253 | 262 | 272 | 282 |
| 66 | 207.8 | 217.7 | 227.5 | 237.3 | 247.2 | 257.0 | 266.8 | 276.7 | | | | | | | | |
| 75 | 217.5 | 227.3 | 237.1 | 247.0 | 256.8 | 266.6 | 276.5 | 286.3 | 296.1 | 306.0 | 315.8 | 325.7 | | | | |
| 85 | 227.1 | 236.9 | 246.8 | 256.6 | 266.4 | 276.3 | 286.1 | 295.9 | 305.8 | 315.6 | 325.4 | 335.3 | 345.1 | 355.0 | 364.8 | 374.6 |
| 95 | 236.7 | 246.5 | 256.4 | 266.2 | 276.1 | 285.9 | 295.7 | 305.6 | 315.4 | 325.2 | 335.1 | 344.9 | 354.7 | 364.6 | 374.4 | 384.3 |
| 105 | 246.3 | 256.2 | 266.0 | 275.8 | 285.7 | 295.5 | 305.4 | 315.2 | 325.0 | 334.9 | 344.7 | 354.5 | 364.4 | 374.2 | 384.0 | 393.9 |
| 115 | 256.0 | 265.8 | 275.6 | 285.5 | 295.3 | 305.1 | 315.0 | 324.8 | 334.7 | 344.5 | 354.3 | 364.2 | 374.0 | 383.8 | 393.7 | 403.5 |
| 125 | 265.6 | 275.4 | 285.3 | 295.1 | 304.9 | 314.8 | 324.6 | 334.4 | 344.3 | 354.1 | 364.0 | 373.8 | 383.6 | 393.5 | 403.3 | 413.1 |
| 135 | 275.2 | 285.1 | 294.9 | 304.7 | 314.6 | 324.4 | 334.2 | 344.1 | 353.9 | 363.7 | 373.6 | 383.4 | 393.3 | 403.1 | 412.9 | 422.8 |
| 144 | 284.8 | 294.7 | 304.5 | 314.4 | 324.2 | 334.0 | 343.9 | 353.7 | 363.5 | 373.4 | 383.2 | 393.0 | 402.9 | 412.7 | 422.6 | 432.4 |
| 154 | 294.5 | 304.3 | 314.1 | 324.0 | 333.8 | 343.7 | 353.5 | 363.3 | 373.2 | 383.0 | 392.8 | 402.7 | 412.5 | 422.3 | 432.2 | 442.0 |
| 164 | 304.1 | 313.9 | 323.8 | 333.6 | 343.4 | 353.3 | 363.1 | 373.0 | 382.8 | 392.6 | 402.5 | 412.3 | 422.1 | 432.0 | 441.8 | 451.6 |
| 174 | 313.7 | 323.6 | 333.4 | 343.2 | 353.1 | 362.9 | 372.7 | 382.6 | 392.4 | 402.3 | 412.1 | 421.9 | 431.8 | 441.6 | 451.4 | 461.3 |
| 184 | 323.4 | 333.2 | 343.0 | 352.9 | 362.7 | 372.5 | 382.4 | 392.2 | 402.0 | 411.9 | 421.7 | 431.6 | 441.4 | 451.2 | 461.1 | 470.9 |
| 194 | 333.0 | 342.8 | 352.7 | 362.5 | 372.3 | 382.2 | 392.0 | 401.8 | 411.7 | 421.5 | 431.3 | 441.2 | 451.0 | 460.9 | 470.7 | 480.5 |
| 203 | 342.6 | 352.4 | 362.3 | 372.1 | 382.0 | 391.8 | 401.6 | 411.5 | 421.3 | 431.1 | 441.0 | 450.8 | 460.6 | 470.5 | 480.3 | 490.2 |
| 213 | 352.2 | 362.1 | 371.9 | 381.7 | 391.6 | 401.4 | 411.3 | 421.1 | 430.9 | 440.8 | 450.6 | 460.4 | 470.3 | 480.1 | 489.9 | 499.8 |
| 223 | 361.9 | 371.7 | 381.5 | 391.4 | 401.2 | 411.0 | 420.9 | 430.7 | 440.6 | 450.4 | 460.2 | 470.1 | 479.9 | 489.7 | 499.6 | 509.4 |
| 233 | 371.5 | 381.3 | 391.2 | 401.0 | 410.8 | 420.7 | 430.5 | 440.3 | 450.2 | 460.0 | 469.9 | 479.7 | 489.5 | 499.4 | 509.2 | 519.0 |
| 243 | 381.1 | 391.0 | 400.8 | 410.6 | 420.5 | 430.3 | 440.1 | 450.0 | 459.8 | 469.6 | 479.5 | 489.3 | 499.2 | 509.0 | 518.8 | 528.7 |
| 253 | 390.7 | 400.6 | 410.4 | 420.3 | 430.1 | 439.9 | 449.8 | 459.6 | 469.4 | 479.3 | 489.1 | 498.9 | 508.8 | 518.6 | 528.5 | 538.3 |
| 262 | 400.4 | 410.2 | 420.0 | 429.9 | 439.7 | 449.6 | 459.4 | 469.2 | 479.1 | 488.9 | 498.7 | 508.6 | 518.4 | 528.2 | 538.1 | 547.9 |
| 272 | 410.0 | 419.8 | 429.7 | 439.5 | 449.3 | 459.2 | 469.0 | 478.9 | 488.7 | 498.5 | 508.4 | 518.2 | 528.0 | 537.9 | 547.7 | 557.5 |
| 282 | 419.6 | 429.5 | 439.3 | 449.1 | 459.0 | 468.8 | 478.6 | 488.5 | 498.3 | 508.2 | 518.0 | 527.8 | 537.7 | 547.5 | 557.3 | 567.2 |
| 292 | 429.3 | 439.1 | 448.9 | 458.8 | 468.6 | 478.4 | 488.3 | 498.1 | 507.9 | 517.8 | 527.6 | 537.5 | 547.3 | 557.1 | 567.0 | 576.8 |
| 302 | 438.9 | 448.7 | 458.6 | 468.4 | 478.2 | 488.1 | 497.9 | 507.7 | 517.6 | 527.4 | 537.2 | 547.1 | 556.9 | 566.8 | 576.6 | 586.4 |
| 312 | 448.5 | 458.3 | 468.2 | 478.0 | 487.9 | 497.7 | 507.5 | 517.4 | 527.2 | 537.0 | 546.9 | 556.7 | 566.5 | 576.4 | 586.2 | 596.1 |
| 322 | 458.1 | 468.0 | 477.8 | 487.6 | 497.5 | 507.3 | 517.2 | 527.0 | 536.8 | 546.7 | 556.5 | 566.3 | 576.2 | 586.0 | 595.8 | 605.7 |
| 331 | 467.8 | 477.6 | 487.4 | 497.3 | 507.1 | 516.9 | 526.8 | 536.6 | 546.5 | 556.3 | 566.1 | 576.0 | 585.8 | 595.6 | 605.5 | |
| 341 | 477.4 | 487.2 | 497.1 | 506.9 | 516.7 | 526.6 | 536.4 | 546.2 | 556.1 | 565.9 | 575.8 | 585.6 | 595.4 | 605.3 | 615.1 | |
| 351 | 487.0 | 496.9 | 506.7 | 516.5 | 526.4 | 536.2 | 546.0 | 555.9 | 565.7 | 575.5 | 585.4 | 595.2 | 605.1 | 614.9 | 624.7 | |
| 361 | 496.6 | 506.5 | 516.3 | 526.2 | 536.0 | 545.8 | 555.7 | 565.5 | 575.3 | 585.2 | 595.0 | 604.8 | 614.7 | 624.5 | 634.4 | |
| 371 | 506.3 | 516.1 | 525.9 | 535.8 | 545.6 | 555.5 | 565.3 | 575.1 | 585.0 | 594.8 | 604.6 | 614.5 | 624.3 | 634.1 | 644.0 | |

Load capacities with luffing jib

Load capacity in 1000 lbs with 135 ft main boom [88/83/75/65°]

| Radius [ft] | Jib length 66 ft | | | | Jib length 125 ft | | | | Jib length 184 ft | | | |
|-------------|-------------------|-------|-------|-------|-------------------|-------|-------|-------|-------------------|-------|------|------|
| | 88° | 83° | 75° | 65° | 88° | 83° | 75° | 65° | 88° | 83° | 75° | 65° |
| 28.71 | 258.0 | | | | | | | | | | | |
| 50 | 247.7 | 258.0 | | | 207.0 | | | | | | | |
| 55 | 218.4 | 258.0 | | | 197.2 | | | | 126.2 | | | |
| 65 | 168.2 | 227.2 | | | 173.5 | 202.3 | | | 123.6 | | | |
| 75 | 122.4 | 179.8 | 258.0 | | 145.9 | 179.8 | | | 118.8 | | | |
| 85 | | 137.1 | 220.8 | | 125.5 | 150.0 | | | 113.5 | 124.0 | | |
| 100 | | | 160.6 | | 101.9 | 119.8 | 153.6 | | 97.6 | 114.5 | | |
| 105 | | | 138.1 | | 95.5 | 112.3 | 147.8 | | 93.9 | 106.7 | | |
| 110 | | | | 187.7 | 88.8 | 105.2 | 135.6 | | 88.7 | 100.1 | | |
| 115 | | | | 178.7 | 82.9 | 99.2 | 127.4 | | 83.7 | 95.7 | | |
| 120 | | | | 169.3 | 77.1 | 92.7 | 118.0 | | 79.1 | 90.7 | | |
| 125 | | | | 153.4 | 70.5 | 87.0 | 110.6 | | 75.1 | 85.5 | 99.8 | |
| 130 | | | | | 63.8 | 81.7 | 104.0 | | 71.6 | 80.8 | 99.3 | |
| 140 | | | | | | 68.6 | 92.7 | 117.2 | 65.4 | 73.0 | 89.0 | |
| 145 | | | | | | 61.8 | 87.7 | 114.3 | 62.0 | 69.9 | 84.7 | |
| 160 | | | | | | | 70.4 | 95.8 | 53.1 | 60.8 | 72.1 | |
| 175 | | | | | | | | 81.1 | 44.9 | 53.0 | 63.6 | 74.8 |
| 185 | | | | | | | | 71.0 | 38.9 | 47.4 | 58.2 | 70.8 |
| 190 | | | | | | | | | 35.8 | 44.5 | 55.8 | 67.4 |
| 200 | | | | | | | | | | 38.4 | 51.0 | 62.4 |
| 220 | | | | | | | | | | | 40.1 | 52.8 |
| 240 | | | | | | | | | | | | 43.9 |
| Radius [ft] | Jib length 243 ft | | | | Jib length 302 ft | | | | Jib length 371 ft | | | |
| | 88° | 83° | 75° | 65° | 88° | 83° | 75° | 65° | 88° | 83° | 75° | 65° |
| 70 | 77.2 | | | | | | | | | | | |
| 80 | 75.4 | | | | 47.3 | | | | | | | |
| 90 | 73.6 | | | | 46.5 | | | | | | | |
| 95 | 72.6 | | | | 45.6 | | | | 24.9 | | | |
| 100 | 71.9 | 75.5 | | | 45.0 | | | | 24.9 | | | |
| 120 | 67.3 | 72.4 | | | 42.0 | 43.2 | | | 22.8 | | | |
| 140 | 61.7 | 66.4 | | | 39.5 | 40.8 | | | 21.0 | 21.6 | | |
| 150 | 56.3 | 63.3 | 67.6 | | 38.4 | 39.7 | | | 20.4 | 21.0 | | |
| 175 | 46.0 | 50.6 | 60.0 | | 35.7 | 37.3 | 37.0 | | 18.5 | 19.2 | | |
| 205 | 35.5 | 40.1 | 46.7 | | 32.3 | 34.0 | 35.2 | | 16.9 | 17.5 | 17.7 | |
| 210 | 34.1 | 38.5 | 44.9 | 51.5 | 31.9 | 33.5 | 34.8 | | 16.7 | 17.3 | 17.7 | |
| 245 | 23.1 | 28.8 | 34.7 | 40.9 | 24.6 | 27.8 | 32.0 | 31.8 | 15.3 | 15.7 | 16.1 | |
| 255 | | 25.0 | 33.0 | 37.9 | 22.8 | 25.8 | 30.0 | 31.6 | 15.0 | 15.4 | 15.7 | |
| 260 | | 23.1 | 31.4 | 36.6 | 21.9 | 24.9 | 28.9 | 31.3 | | 15.2 | 15.5 | |
| 275 | | | 26.4 | 33.4 | 19.0 | 22.5 | 25.9 | 30.0 | | | 14.9 | |
| 280 | | | | 33.1 | 17.7 | 21.5 | 25.0 | 29.7 | | | 14.8 | |
| 300 | | | | 27.6 | 12.8 | 16.7 | 21.7 | 25.7 | | | | 14.1 |
| 305 | | | | | 11.6 | 15.5 | 20.6 | 24.8 | | | | 14.0 |
| 310 | | | | | | 14.3 | 19.6 | 23.9 | | | | 13.8 |
| 315 | | | | | | 13.0 | 18.5 | 23.1 | | | | |
| 335 | | | | | | | 14.2 | 19.8 | | | | |
| 355 | | | | | | | | 16.3 | | | | |

Carbody counterweight: 126,100 lbs with 3.9 ft flat track pads
 Rear counterweight: 163,200/229,300/273,400 lbs
 Suspended counterweight: 4,400-264,600 lbs / radius 40-51.8 ft

TLT 14168081/0. Above load charts are for reference only. For actual lift duty please refer to load chart in operator's cabin or manual. Otherwise we recommend you to plan your lifting job using Crane Planner 2.0.

Load capacities with luffing jib

Load capacity in 1000 lbs with 184 ft main boom [88/83/75/65°]

| Radius [ft] | Jib length 66 ft | | | | Jib length 125 ft | | | | Jib length 184 ft | | | |
|-------------|-------------------|-------|-------|-------|-------------------|-------|-------|-------|-------------------|-------|------|------|
| | 88 ° | 83 ° | 75 ° | 65 ° | 88 ° | 83 ° | 75 ° | 65 ° | 88 ° | 83 ° | 75 ° | 65 ° |
| 30.43 | 258.0 | | | | | | | | | | | |
| 40 | 258.0 | | | | | | | | | | | |
| 50 | 230.1 | | | | 163.2 | | | | | | | |
| 55 | 210.9 | 258.0 | | | 158.4 | | | | 104.6 | | | |
| 70 | 157.9 | 228.1 | | | 142.2 | 170.4 | | | 100.8 | | | |
| 75 | 133.9 | 206.0 | | | 137.4 | 168.4 | | | 98.2 | | | |
| 80 | | 184.0 | | | 131.6 | 164.1 | | | 96.2 | | | |
| 90 | | 144.3 | 228.5 | | 117.2 | 146.7 | | | 91.6 | 105.7 | | |
| 95 | | 119.3 | 215.6 | | 111.1 | 139.2 | | | 89.0 | 104.8 | | |
| 105 | | | 188.7 | | 98.5 | 120.8 | | | 85.0 | 101.4 | | |
| 120 | | | 130.1 | | 80.6 | 100.1 | 141.5 | | 76.2 | 92.3 | | |
| 130 | | | | 147.8 | 67.4 | 89.1 | 122.5 | | 71.2 | 84.9 | | |
| 135 | | | | 141.8 | 60.5 | 84.2 | 114.1 | | 69.2 | 80.5 | | |
| 140 | | | | 136.1 | | 77.7 | 107.7 | | 66.4 | 76.6 | 98.5 | |
| 150 | | | | 126.2 | | 64.4 | 95.9 | | 60.2 | 70.3 | 91.8 | |
| 160 | | | | | | | 85.8 | 114.0 | 54.6 | 64.7 | 82.4 | |
| 175 | | | | | | | 68.3 | 101.6 | 46.7 | 56.3 | 70.6 | |
| 190 | | | | | | | | 86.5 | 37.7 | 48.6 | 62.4 | |
| 195 | | | | | | | | 82.1 | | 45.7 | 59.6 | 74.2 |
| 205 | | | | | | | | 72.5 | | 39.8 | 54.8 | 71.3 |
| 230 | | | | | | | | | | | 42.2 | 57.5 |
| 260 | | | | | | | | | | | | 44.7 |
| Radius [ft] | Jib length 243 ft | | | | Jib length 302 ft | | | | Jib length 371 ft | | | |
| | 88 ° | 83 ° | 75 ° | 65 ° | 88 ° | 83 ° | 75 ° | 65 ° | 88 ° | 83 ° | 75 ° | 65 ° |
| 70 | 66.4 | | | | | | | | | | | |
| 80 | 65.8 | | | | 43.6 | | | | | | | |
| 85 | 65.0 | | | | 43.6 | | | | | | | |
| 95 | 62.9 | | | | 42.7 | | | | 23.6 | | | |
| 105 | 61.3 | 66.4 | | | 41.8 | | | | 23.3 | | | |
| 125 | 56.7 | 65.1 | | | 39.4 | 40.5 | | | 21.5 | | | |
| 145 | 52.6 | 62.0 | | | 37.2 | 38.8 | | | 20.0 | 20.6 | | |
| 165 | 48.3 | 55.8 | 62.5 | | 35.5 | 36.8 | | | 18.6 | 19.5 | | |
| 190 | 41.2 | 47.3 | 58.2 | | 32.8 | 34.8 | 35.1 | | 17.1 | 17.9 | | |
| 215 | 33.7 | 38.9 | 47.5 | | 30.7 | 32.9 | 33.8 | | 16.0 | 16.7 | 16.7 | |
| 230 | 28.7 | 34.9 | 42.5 | 51.2 | 27.4 | 31.6 | 32.9 | | 15.4 | 16.0 | 16.5 | |
| 250 | 22.3 | 29.2 | 36.6 | 45.9 | 23.6 | 27.3 | 31.8 | | 14.7 | 15.2 | 15.6 | |
| 255 | | 27.5 | 35.4 | 44.2 | 22.8 | 26.3 | 31.5 | | 14.6 | 15.0 | 15.4 | |
| 265 | | 24.0 | 33.4 | 41.2 | 21.3 | 24.6 | 29.9 | 30.1 | | 14.7 | 15.1 | |
| 270 | | | 32.4 | 39.7 | 20.6 | 23.9 | 28.8 | 30.1 | | 14.4 | 14.9 | |
| 290 | | | 26.1 | 34.6 | 16.0 | 20.7 | 25.0 | 29.4 | | | 14.3 | |
| 295 | | | | 33.4 | 14.8 | 19.6 | 24.3 | 29.1 | | | 14.2 | |
| 305 | | | | 32.1 | 12.4 | 17.2 | 22.8 | 28.1 | | | | 13.5 |
| 320 | | | | 28.3 | | 13.7 | 20.2 | 25.4 | | | | 13.3 |
| 330 | | | | | | | 18.2 | 23.9 | | | | 13.1 |
| 345 | | | | | | | 15.2 | 21.8 | | | | |
| 375 | | | | | | | | 16.8 | | | | |

Carbody counterweight: 126,100 lbs with 3.9 ft flat track pads
 Rear counterweight: 163,200/229,300/273,400 lbs
 Suspended counterweight: 4,400-264,600 lbs / radius 40-51.8 ft

TLT 14168081/0. Above load charts are for reference only. For actual lift duty please refer to load chart in operator's cabin or manual. Otherwise we recommend you to plan your lifting job using Crane Planner 2.0.

Load capacities with luffing jib

Load capacity in 1000 lbs with 233 ft main boom [88/83/75/65°]

| Radius [ft] | Jib length 75 ft | | | | Jib length 135 ft | | | | Jib length 194 ft | | | |
|-------------|-------------------|-------|-------|-------|-------------------|-------|-------|------|-------------------|------|------|------|
| | 88 ° | 83 ° | 75 ° | 65 ° | 88 ° | 83 ° | 75 ° | 65 ° | 88 ° | 83 ° | 75 ° | 65 ° |
| 34.19 | 184.4 | | | | | | | | | | | |
| 50 | 166.0 | | | | 120.2 | | | | | | | |
| 60 | 152.1 | | | | 113.7 | | | | 80.3 | | | |
| 65 | 145.7 | 184.4 | | | 110.8 | | | | 79.6 | | | |
| 80 | 126.9 | 164.8 | | | 100.0 | 121.6 | | | 74.8 | | | |
| 90 | 101.9 | 151.2 | | | 93.0 | 117.1 | | | 72.1 | | | |
| 100 | | 136.8 | | | 86.4 | 110.4 | | | 68.0 | 80.6 | | |
| 105 | | 123.0 | 184.7 | | 83.9 | 107.9 | | | 66.4 | 79.6 | | |
| 110 | | 107.9 | 175.4 | | 80.4 | 103.5 | | | 65.0 | 78.3 | | |
| 130 | | | 145.9 | | 68.9 | 89.6 | 125.6 | | 57.6 | 72.8 | | |
| 140 | | | 122.9 | | 60.7 | 81.7 | 119.9 | | 54.6 | 69.4 | | |
| 155 | | | | 112.5 | | 70.1 | 102.3 | | 50.0 | 63.5 | 83.2 | |
| 165 | | | | 104.8 | | 59.7 | 92.8 | | 47.1 | 60.4 | 82.4 | |
| 180 | | | | 95.2 | | | 79.6 | | 43.3 | 54.0 | 74.1 | |
| 190 | | | | | | | 70.4 | 85.8 | 39.2 | 50.3 | 67.6 | |
| 195 | | | | | | | 65.4 | 83.2 | 37.2 | 48.8 | 65.1 | |
| 205 | | | | | | | | 78.5 | 32.7 | 44.6 | 60.2 | |
| 220 | | | | | | | | 72.2 | | 37.2 | 53.2 | |
| 225 | | | | | | | | 70.3 | | | 51.3 | 66.6 |
| 235 | | | | | | | | 66.7 | | | 47.3 | 63.5 |
| 255 | | | | | | | | | | | 38.1 | 55.2 |
| 295 | | | | | | | | | | | | 39.8 |
| Radius [ft] | Jib length 253 ft | | | | Jib length 312 ft | | | | Jib length 371 ft | | | |
| | 88 ° | 83 ° | 75 ° | 65 ° | 88 ° | 83 ° | 75 ° | 65 ° | 88 ° | 83 ° | 75 ° | 65 ° |
| 75 | 53.7 | | | | | | | | | | | |
| 85 | 52.5 | | | | 36.3 | | | | | | | |
| 100 | 50.1 | | | | 35.3 | | | | 21.7 | | | |
| 115 | 47.8 | 54.0 | | | 33.8 | | | | 20.8 | | | |
| 135 | 44.1 | 52.1 | | | 32.0 | 34.3 | | | 19.3 | | | |
| 150 | 41.5 | 49.7 | | | 30.3 | 33.2 | | | 18.4 | 19.2 | | |
| 180 | 36.6 | 45.0 | 52.3 | | 27.7 | 30.6 | | | 16.7 | 17.8 | | |
| 205 | 32.9 | 41.1 | 50.6 | | 25.5 | 28.9 | 30.1 | | 15.6 | 16.4 | | |
| 230 | 29.3 | 34.9 | 44.8 | | 23.7 | 27.2 | 28.9 | | 14.5 | 15.4 | 15.6 | |
| 255 | 22.4 | 29.8 | 38.1 | 46.1 | 21.2 | 24.7 | 27.7 | | 13.8 | 14.4 | 15.1 | |
| 260 | 21.0 | 28.3 | 36.8 | 45.9 | 20.8 | 24.0 | 27.5 | | 13.6 | 14.3 | 14.9 | |
| 275 | | 23.9 | 33.4 | 43.5 | 19.6 | 22.2 | 26.9 | | | 13.9 | 14.4 | |
| 280 | | 22.3 | 32.9 | 42.0 | 19.2 | 21.7 | 26.5 | | | | 14.3 | |
| 290 | | | 30.3 | 39.4 | 17.1 | 20.9 | 25.0 | 25.6 | | | 14.0 | |
| 310 | | | 24.6 | 34.1 | 12.6 | 17.9 | 22.4 | 25.2 | | | 13.3 | |
| 315 | | | | 33.4 | 11.5 | 16.8 | 22.0 | 25.1 | | | | |
| 325 | | | | 32.0 | | 14.7 | 21.1 | 24.9 | | | | 12.6 |
| 335 | | | | 29.7 | | 12.4 | 19.8 | 24.2 | | | | 12.6 |
| 350 | | | | 26.2 | | | 17.1 | 22.2 | | | | 12.4 |
| 355 | | | | | | | 16.1 | 21.8 | | | | 12.1 |
| 370 | | | | | | | | 13.2 | | | | |
| 410 | | | | | | | | 14.5 | | | | |

Carbody counterweight: 126,100 lbs with 3.9 ft flat track pads
 Rear counterweight: 163,200/229,300/273,400 lbs
 Suspended counterweight: 4,400-264,600 lbs / radius 40-51.8 ft

TLT 14168081/0. Above load charts are for reference only. For actual lift duty please refer to load chart in operator's cabin or manual. Otherwise we recommend you to plan your lifting job using Crane Planner 2.0.

Load capacities with luffing jib

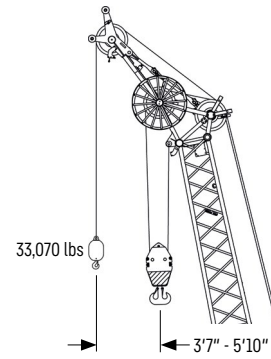
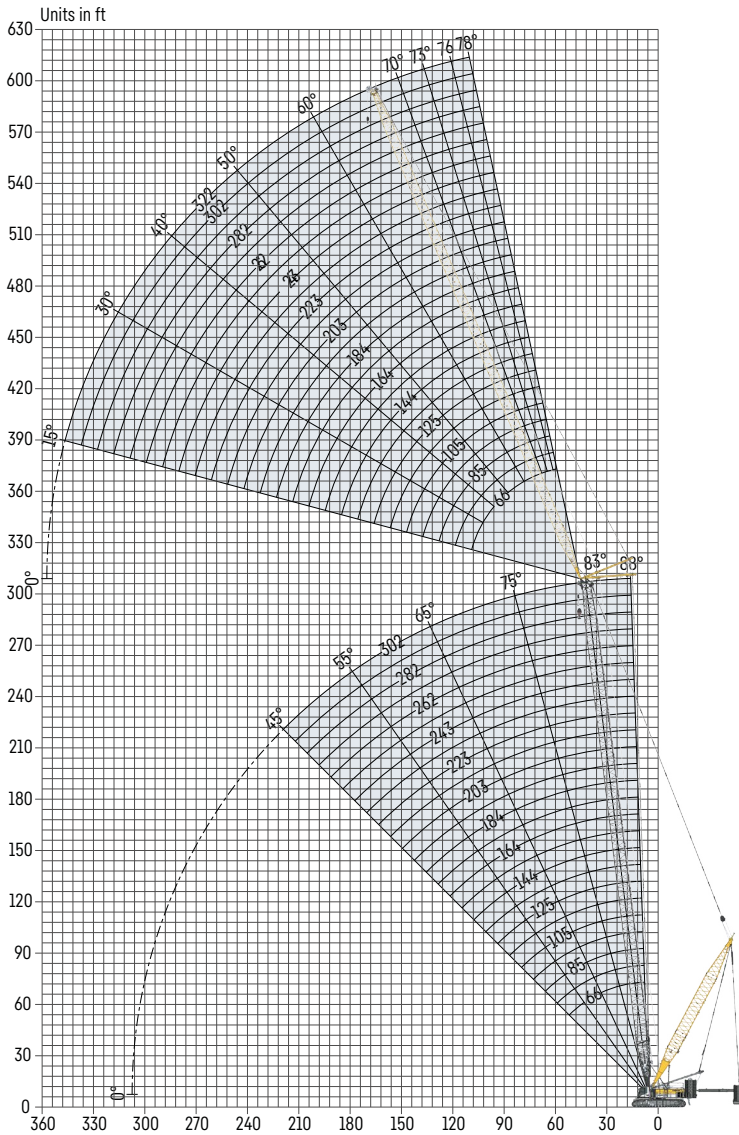
Load capacity in 1000 lbs with 282 ft main boom [88/83/75/65°]

| Radius (ft) | Jib length 85 ft | | | | Jib length 135 ft | | | | Jib length 184 ft | | | | |
|-------------|-------------------|-------|-------|------|-------------------|------|------|------|-------------------|------|------|------|------|
| | 88° | 83° | 75° | 65° | 88° | 83° | 75° | 65° | 88° | 83° | 75° | 65° | |
| 37.96 | 128.6 | | | | | | | | | | | | |
| 50 | 121.3 | | | | 93.6 | | | | | | | | |
| 55 | 116.8 | | | | 91.8 | | | | | | | | |
| 60 | 113.3 | | | | 89.6 | | | | 69.4 | | | | |
| 70 | 104.4 | 130.2 | | | 85.0 | | | | 67.4 | | | | |
| 75 | 101.0 | 127.8 | | | 82.0 | | | | 66.0 | | | | |
| 85 | 92.8 | 120.7 | | | 77.7 | 94.6 | | | 63.2 | | | | |
| 90 | 89.6 | 116.4 | | | 74.6 | 93.4 | | | 61.7 | | | | |
| 100 | 84.6 | 109.0 | | | 69.4 | 89.0 | | | 58.4 | 69.4 | | | |
| 120 | | 94.5 | 132.5 | | 60.4 | 79.1 | | | 52.4 | 65.8 | | | |
| 125 | | 90.9 | 131.1 | | 58.4 | 76.8 | | | 50.8 | 64.3 | | | |
| 145 | | | 117.9 | | 52.0 | 67.1 | 96.6 | | 45.8 | 58.7 | | | |
| 160 | | | 104.2 | | | 60.9 | 91.1 | | 42.2 | 54.9 | | | |
| 165 | | | | | | 58.8 | 89.0 | | 41.1 | 53.6 | 71.3 | | |
| 170 | | | | | | 56.7 | 87.2 | | 40.2 | 51.9 | 71.0 | | |
| 180 | | | | 86.0 | | | 81.8 | | 38.3 | 48.9 | 69.1 | | |
| 195 | | | | 78.4 | | | 74.1 | | 35.5 | 45.1 | 66.0 | | |
| 210 | | | | 71.8 | | | 62.0 | | | 40.6 | 61.9 | | |
| 220 | | | | | | | | 65.1 | | 37.4 | 57.1 | | |
| 235 | | | | | | | | 60.1 | | | 51.3 | 57.0 | |
| 255 | | | | | | | | 54.2 | | | 42.4 | 51.4 | |
| 305 | | | | | | | | | | | | 40.6 | |
| Radius (ft) | Jib length 233 ft | | | | Jib length 282 ft | | | | Jib length 322 ft | | | | |
| | 88° | 83° | 75° | 65° | 88° | 83° | 75° | 65° | 88° | 83° | 75° | 65° | |
| 70 | 50.9 | | | | | | | | | | | | |
| 75 | 50.8 | | | | | | | | | | | | |
| 80 | 49.9 | | | | 38.2 | | | | | | | | |
| 90 | 48.2 | | | | 37.3 | | | | 29.2 | | | | |
| 115 | 43.2 | 51.3 | | | 34.6 | | | | 27.8 | | | | |
| 130 | 40.5 | 49.8 | | | 32.9 | 37.8 | | | 26.5 | | | | |
| 140 | 38.6 | 48.2 | | | 31.6 | 37.4 | | | 26.0 | 28.3 | | | |
| 160 | 35.0 | 45.0 | | | 29.7 | 35.3 | | | 24.1 | 27.4 | | | |
| 185 | 32.4 | 40.2 | 52.1 | | 26.5 | 33.2 | | | 22.4 | 25.6 | | | |
| 205 | 29.2 | 37.0 | 50.7 | | 24.7 | 31.0 | 36.1 | | 20.9 | 24.5 | | | |
| 220 | 27.0 | 34.5 | 48.6 | | 23.3 | 29.6 | 35.6 | | 19.9 | 23.4 | 24.7 | | |
| 245 | 21.9 | 31.2 | 44.0 | | 21.5 | 27.3 | 34.0 | | 18.3 | 22.0 | 24.2 | | |
| 265 | | 26.0 | 38.5 | 45.5 | 19.5 | 25.6 | 32.9 | | 16.9 | 20.7 | 23.2 | | |
| 290 | | | 32.1 | 40.2 | 15.3 | 22.4 | 29.6 | | 15.5 | 19.1 | 22.3 | | |
| 295 | | | 30.7 | 39.2 | | | 21.3 | 28.9 | 32.2 | 14.8 | 18.8 | 22.1 | |
| 305 | | | 28.2 | 37.4 | | | 19.0 | 27.6 | 32.1 | 13.2 | 18.3 | 21.5 | |
| 315 | | | | 35.7 | | | 16.7 | 26.5 | 31.8 | 11.6 | 17.7 | 20.8 | 21.4 |
| 330 | | | | 33.4 | | | | 23.8 | 30.8 | 9.1 | 14.9 | 19.9 | 21.4 |
| 355 | | | | 29.8 | | | | 18.1 | 27.3 | | 10.0 | 18.3 | 20.6 |
| 390 | | | | | | | | | 22.1 | | | 12.2 | 18.8 |
| 400 | | | | | | | | | 20.2 | | | | 18.4 |
| 440 | | | | | | | | | | | | | 13.1 |

Carbody counterweight: 126,100 lbs with 3.9 ft flat track pads
 Rear counterweight: 163,200/229,300/273,400 lbs
 Suspended counterweight: 4,400-264,600 lbs / radius 40-51.8 ft

TLT 14168081/0. Above load charts are for reference only. For actual lift duty please refer to load chart in operator's cabin or manual. Otherwise we recommend you to plan your lifting job using Crane Planner 2.0.

Luffing jib 1916.XX (66-312 ft)



Auxiliary jib 33,070 lbs (option)
 The maximum capacity of the auxiliary jib for the luffing jib is 33,070 lbs.

Jib configuration 1916.xx

| Jib section | Amount of jib sections | | | | | | | | | | | | | |
|------------------------|------------------------|------------|------------|------------|------------|------------|------------|------------|------------|------------|------------|------------|------------|------------|
| Jib foot 23 ft | 1 | 1 | 1 | 1 | 1 | 1 | 1 | 1 | 1 | 1 | 1 | 1 | 1 | 1 |
| Jib section 10 ft | | 1 | | 1 | | 1 | | 1 | | 1 | | 1 | | 1 |
| Jib section 20 ft | 1 | 1 | | | 1 | 1 | | | 1 | 1 | | | 1 | 1 |
| Jib section 40 ft | | | 1 | 1 | 1 | 1 | 2 | 2 | 2 | 3 | 3 | 3 | 3 | 3 |
| Jib head 23 ft | 1 | 1 | 1 | 1 | 1 | 1 | 1 | 1 | 1 | 1 | 1 | 1 | 1 | 1 |
| Jib length [ft] | 66 | 76 | 85 | 95 | 105 | 115 | 125 | 134 | 144 | 154 | 164 | 174 | 184 | 184 |
| Auxiliary jib | ✓ | ✓ | ✓ | ✓ | ✓ | ✓ | ✓ | ✓ | ✓ | ✓ | ✓ | ✓ | ✓ | ✓ |
| Jib foot 23 ft | 1 | 1 | 1 | 1 | 1 | 1 | 1 | 1 | 1 | 1 | 1 | 1 | 1 | 1 |
| Jib section 10 ft | 1 | | 1 | | 1 | | 1 | | 1 | | 1 | | 1 | 1 |
| Jib section 20 ft | 1 | | | 1 | 1 | | | 1 | 1 | | | 1 | 1 | 1 |
| Jib section 40 ft | 3 | 4 | 4 | 4 | 4 | 5 | 5 | 5 | 5 | 6 | 6 | 6 | 6 | 6 |
| Jib head 23 ft | 1 | 1 | 1 | 1 | 1 | 1 | 1 | 1 | 1 | 1 | 1 | 1 | 1 | 1 |
| Jib length [ft] | 194 | 203 | 213 | 223 | 233 | 243 | 253 | 262 | 272 | 282 | 292 | 302 | 312 | 312 |
| Auxiliary jib | ✓ | ✓ | ✓ | ✓ | ✓ | ✓ | ✓ | ✓ | ✓ | ✓ | ✓ | ✓ | ✓ | ✓ |

Actual lengths of jib sections are metric (e.g. 3 m, 6 m). The figures shown above are approximate conversions to feet.

Maximum load capacity in 1000 lbs

| | Main boom [ft] | | | | | | | | | | | | | | | | | |
|-----|----------------|-------|-------|-------|-------|-------|-------|-------|-------|-------|-------|-------|-------|-------|-------|-------|-------|-------|
| | 135 | 144 | 154 | 164 | 174 | 184 | 194 | 203 | 213 | 223 | 233 | 243 | 253 | 262 | 272 | 282 | 292 | 302 |
| 66 | 195.4 | 195.4 | 195.4 | 195.4 | 193.8 | 191.1 | 184.9 | 179.9 | 174.0 | 170.4 | 163.7 | 161.2 | 155.3 | 150.7 | 144.3 | | | |
| 75 | 184.4 | 183.2 | 181.2 | 179.2 | 176.2 | 173.1 | 168.8 | 164.5 | 159.6 | 154.8 | 151.0 | 147.3 | 142.9 | 138.4 | 131.6 | 128.7 | 123.7 | 118.7 |
| 85 | 171.2 | 169.9 | 167.0 | 164.6 | 161.2 | 158.4 | 154.9 | 152.0 | 147.5 | 144.1 | 139.0 | 135.8 | 131.7 | 128.3 | 123.9 | 120.5 | 115.5 | 111.5 |
| 95 | 154.9 | 153.3 | 150.9 | 148.6 | 146.0 | 143.4 | 140.5 | 137.6 | 134.4 | 131.3 | 127.4 | 123.9 | 120.0 | 117.0 | 113.8 | 110.5 | 106.9 | 103.3 |
| 105 | 142.2 | 140.4 | 137.9 | 135.8 | 133.5 | 131.5 | 128.5 | 126.1 | 123.2 | 120.8 | 117.5 | 115.0 | 111.3 | 108.3 | 104.9 | 102.3 | 99.1 | 96.4 |
| 115 | 126.3 | 124.9 | 123.2 | 121.6 | 119.8 | 118.0 | 115.9 | 113.8 | 111.7 | 109.6 | 107.3 | 105.0 | 102.3 | 99.6 | 96.6 | 93.9 | 91.0 | 88.2 |
| 125 | 114.3 | 113.0 | 111.5 | 110.3 | 108.6 | 107.3 | 105.5 | 104.1 | 102.2 | 100.6 | 98.5 | 96.8 | 94.4 | 92.6 | 89.8 | 87.5 | 84.9 | 82.7 |
| 135 | 103.6 | 102.4 | 101.2 | 100.0 | 98.7 | 97.4 | 95.2 | 94.0 | 92.4 | 90.8 | 89.3 | 87.7 | 86.0 | 84.4 | 82.3 | 80.3 | 78.2 | 76.1 |
| 144 | 94.8 | 93.7 | 92.5 | 91.6 | 90.3 | 89.2 | 87.3 | 86.2 | 84.7 | 83.5 | 82.1 | 80.9 | 79.2 | 77.7 | 75.9 | 74.4 | 72.4 | 70.8 |
| 154 | 85.7 | 84.8 | 83.9 | 83.0 | 82.0 | 80.9 | 79.8 | 78.8 | 77.6 | 76.4 | 75.2 | 74.1 | 72.7 | 71.3 | 69.9 | 68.4 | 66.8 | 65.2 |
| 164 | 79.0 | 78.2 | 77.2 | 76.5 | 75.4 | 74.6 | 73.6 | 72.7 | 71.6 | 70.7 | 69.4 | 68.5 | 67.2 | 66.1 | 64.7 | 63.6 | 62.0 | 60.7 |
| 174 | 71.6 | 71.0 | 70.2 | 69.5 | 68.7 | 67.9 | 66.4 | 65.7 | 64.8 | 64.0 | 63.0 | 62.2 | 61.1 | 60.0 | 59.0 | 58.0 | 56.8 | 55.5 |
| 184 | 65.7 | 65.1 | 64.4 | 63.8 | 63.0 | 62.5 | 61.1 | 60.5 | 59.7 | 59.0 | 58.1 | 57.4 | 56.4 | 55.5 | 54.6 | 53.9 | 52.6 | 51.5 |
| 194 | 59.0 | 58.4 | 57.8 | 57.3 | 56.7 | 56.2 | 55.6 | 55.0 | 54.3 | 53.7 | 53.0 | 52.4 | 51.5 | 50.7 | 49.9 | 49.2 | 48.2 | 47.2 |
| 203 | 53.7 | 53.4 | 52.8 | 52.4 | 51.9 | 51.5 | 50.9 | 50.4 | 49.8 | 49.3 | 48.7 | 48.3 | 47.4 | 46.8 | 46.0 | 45.4 | 44.5 | 43.8 |
| 213 | 49.2 | 48.9 | 48.5 | 48.0 | 47.6 | 47.1 | 46.7 | 46.2 | 45.7 | 45.2 | 44.7 | 44.2 | 43.5 | 42.9 | 42.3 | 41.6 | 40.9 | 40.2 |
| 223 | 45.6 | 45.4 | 44.8 | 44.4 | 44.0 | 43.6 | 43.2 | 42.9 | 42.3 | 41.8 | 41.3 | 40.9 | 40.2 | 39.7 | 39.1 | 38.6 | 37.9 | 37.3 |
| 233 | 41.2 | 41.0 | 40.6 | 40.3 | 39.9 | 39.5 | 39.1 | 38.8 | 38.3 | 37.9 | 37.5 | 37.1 | 36.6 | 36.1 | 35.6 | 35.0 | 34.5 | 33.9 |
| 243 | 37.7 | 37.4 | 37.1 | 36.9 | 36.4 | 36.1 | 35.8 | 35.5 | 35.0 | 34.7 | 34.3 | 34.0 | 33.5 | 33.1 | 32.6 | 32.2 | 31.6 | 31.2 |
| 253 | 34.1 | 33.8 | 33.5 | 33.2 | 32.9 | 32.6 | 32.3 | 32.0 | 31.7 | 31.4 | 31.1 | 30.8 | 30.4 | 30.0 | 29.6 | 29.2 | 28.7 | 28.3 |
| 262 | 31.1 | 30.8 | 30.5 | 30.2 | 30.0 | 29.8 | 29.5 | 29.3 | 29.0 | 28.7 | 28.4 | 28.2 | 27.8 | 27.4 | 27.0 | 26.7 | 26.3 | 25.9 |
| 272 | 27.7 | 27.4 | 27.4 | 27.4 | 27.1 | 26.9 | 26.7 | 26.4 | 26.2 | 25.9 | 25.6 | 25.4 | 25.1 | 24.8 | 24.4 | 24.1 | 23.7 | 23.4 |
| 282 | 25.0 | 24.7 | 24.9 | 25.0 | 24.8 | 24.6 | 24.4 | 24.2 | 23.8 | 23.6 | 23.4 | 23.2 | 22.9 | 22.6 | 22.3 | 22.0 | 21.6 | 21.4 |
| 292 | 22.4 | 22.2 | 22.0 | 21.9 | 21.7 | 21.5 | 21.3 | 21.1 | 21.1 | 21.0 | 20.8 | 20.6 | 20.4 | 20.2 | 19.9 | 19.6 | 19.3 | 19.1 |
| 302 | 20.3 | 20.2 | 19.7 | 19.3 | 19.1 | 19.0 | 18.8 | 18.7 | 18.8 | 19.0 | 18.7 | 18.5 | 18.3 | 18.1 | 17.8 | 17.6 | 17.4 | 17.2 |
| 312 | 18.0 | 18.0 | 17.8 | 17.7 | 17.6 | 17.4 | 17.3 | 17.2 | 17.0 | 16.8 | 16.6 | 16.5 | 16.2 | 16.1 | 15.8 | 15.7 | 15.4 | 15.2 |

Example: To achieve a maximum load capacity of 41,800 lbs, a combination of 223 ft main boom with 223 ft jib length can be selected.

Maximum pulley height in ft

| | Main boom [ft] | | | | | | | | | | | | | | | | | |
|-----|----------------|-------|-------|-------|-------|-------|-------|-------|-------|-------|-------|-------|-------|-------|-------|-------|-------|-------|
| | 135 | 144 | 154 | 164 | 174 | 184 | 194 | 203 | 213 | 223 | 233 | 243 | 253 | 262 | 272 | 282 | 292 | 302 |
| 66 | 207.8 | 217.7 | 227.5 | 237.3 | 247.2 | 257.0 | 266.8 | 276.7 | 286.5 | 296.4 | 306.2 | 316.0 | 325.9 | 335.7 | 345.5 | | | |
| 75 | 217.5 | 227.3 | 237.1 | 247.0 | 256.8 | 266.6 | 276.5 | 286.3 | 296.1 | 306.0 | 315.8 | 325.7 | 335.5 | 345.3 | 355.2 | 365.0 | 374.8 | 384.7 |
| 85 | 227.1 | 236.9 | 246.8 | 256.6 | 266.4 | 276.3 | 286.1 | 295.9 | 305.8 | 315.6 | 325.4 | 335.3 | 345.1 | 355.0 | 364.8 | 374.6 | 384.5 | 394.3 |
| 95 | 236.7 | 246.5 | 256.4 | 266.2 | 276.1 | 285.9 | 295.7 | 305.6 | 315.4 | 325.2 | 335.1 | 344.9 | 354.7 | 364.6 | 374.4 | 384.3 | 394.1 | 403.9 |
| 105 | 246.3 | 256.2 | 266.0 | 275.8 | 285.7 | 295.5 | 305.4 | 315.2 | 325.0 | 334.9 | 344.7 | 354.5 | 364.4 | 374.2 | 384.0 | 393.9 | 403.7 | 413.6 |
| 115 | 256.0 | 265.8 | 275.6 | 285.5 | 295.3 | 305.1 | 315.0 | 324.8 | 334.7 | 344.5 | 354.3 | 364.2 | 374.0 | 383.8 | 393.7 | 403.5 | 413.3 | 423.2 |
| 125 | 265.6 | 275.4 | 285.3 | 295.1 | 304.9 | 314.8 | 324.6 | 334.4 | 344.3 | 354.1 | 364.0 | 373.8 | 383.6 | 393.5 | 403.3 | 413.1 | 423.0 | 432.8 |
| 135 | 275.2 | 285.1 | 294.9 | 304.7 | 314.6 | 324.4 | 334.2 | 344.1 | 353.9 | 363.7 | 373.6 | 383.4 | 393.3 | 403.1 | 412.9 | 422.8 | 432.6 | 442.4 |
| 144 | 284.8 | 294.7 | 304.5 | 314.4 | 324.2 | 334.0 | 343.9 | 353.7 | 363.5 | 373.4 | 383.2 | 393.0 | 402.9 | 412.7 | 422.6 | 432.4 | 442.2 | 452.1 |
| 154 | 294.5 | 304.3 | 314.1 | 324.0 | 333.8 | 343.7 | 353.5 | 363.3 | 373.2 | 383.0 | 392.8 | 402.7 | 412.5 | 422.3 | 432.2 | 442.0 | 451.9 | 461.7 |
| 164 | 304.1 | 313.9 | 323.8 | 333.6 | 343.4 | 353.3 | 363.1 | 373.0 | 382.8 | 392.6 | 402.5 | 412.3 | 422.1 | 432.0 | 441.8 | 451.6 | 461.5 | 471.3 |
| 174 | 313.7 | 323.6 | 333.4 | 343.2 | 353.1 | 362.9 | 372.7 | 382.6 | 392.4 | 402.3 | 412.1 | 421.9 | 431.8 | 441.6 | 451.4 | 461.3 | 471.1 | 480.9 |
| 184 | 323.4 | 333.2 | 343.0 | 352.9 | 362.7 | 372.5 | 382.4 | 392.2 | 402.0 | 411.9 | 421.7 | 431.6 | 441.4 | 451.2 | 461.1 | 470.9 | 480.7 | 490.6 |
| 194 | 333.0 | 342.8 | 352.7 | 362.5 | 372.3 | 382.2 | 392.0 | 401.8 | 411.7 | 421.5 | 431.3 | 441.2 | 451.0 | 460.9 | 470.7 | 480.5 | 490.4 | 500.2 |
| 203 | 342.6 | 352.4 | 362.3 | 372.1 | 382.0 | 391.8 | 401.6 | 411.5 | 421.3 | 431.1 | 441.0 | 450.8 | 460.6 | 470.5 | 480.3 | 490.2 | 500.0 | 509.8 |
| 213 | 352.2 | 362.1 | 371.9 | 381.7 | 391.6 | 401.4 | 411.3 | 421.1 | 430.9 | 440.8 | 450.6 | 460.4 | 470.3 | 480.1 | 489.9 | 499.8 | 509.6 | 519.5 |
| 223 | 361.9 | 371.7 | 381.5 | 391.4 | 401.2 | 411.0 | 420.9 | 430.7 | 440.6 | 450.4 | 460.2 | 470.1 | 479.9 | 489.7 | 499.6 | 509.4 | 519.2 | 529.1 |
| 233 | 371.5 | 381.3 | 391.2 | 401.0 | 410.8 | 420.7 | 430.5 | 440.3 | 450.2 | 460.0 | 469.9 | 479.7 | 489.5 | 499.4 | 509.2 | 519.0 | 528.9 | 538.7 |
| 243 | 381.1 | 391.0 | 400.8 | 410.6 | 420.5 | 430.3 | 440.1 | 450.0 | 459.8 | 469.6 | 479.5 | 489.3 | 499.2 | 509.0 | 518.8 | 528.7 | 538.5 | 548.3 |
| 253 | 390.7 | 400.6 | 410.4 | 420.3 | 430.1 | 439.9 | 449.8 | 459.6 | 469.4 | 479.3 | 489.1 | 498.9 | 508.8 | 518.6 | 528.5 | 538.3 | 548.1 | 558.0 |
| 262 | 400.4 | 410.2 | 420.0 | 429.9 | 439.7 | 449.6 | 459.4 | 469.2 | 479.1 | 488.9 | 498.7 | 508.6 | 518.4 | 528.2 | 538.1 | 547.9 | 557.8 | 567.6 |
| 272 | 410.0 | 419.8 | 429.7 | 439.5 | 449.3 | 459.2 | 469.0 | 478.9 | 488.7 | 498.5 | 508.4 | 518.2 | 528.0 | 537.9 | 547.7 | 557.5 | 567.4 | 577.2 |
| 282 | 419.6 | 429.5 | 439.3 | 449.1 | 459.0 | 468.8 | 478.6 | 488.5 | 498.3 | 508.2 | 518.0 | 527.8 | 537.7 | 547.5 | 557.3 | 567.2 | 577.0 | 586.8 |
| 292 | 429.3 | 439.1 | 448.9 | 458.8 | 468.6 | 478.4 | 488.3 | 498.1 | 507.9 | 517.8 | 527.6 | 537.5 | 547.3 | 557.1 | 567.0 | 576.8 | 586.6 | 596.5 |
| 302 | 438.9 | 448.7 | 458.6 | 468.4 | 478.2 | 488.1 | 497.9 | 507.7 | 517.6 | 527.4 | 537.2 | 547.1 | 556.9 | 566.8 | 576.6 | 586.4 | 596.3 | 606.1 |
| 312 | 448.5 | 458.3 | 468.2 | 478.0 | 487.9 | 497.7 | 507.5 | 517.4 | 527.2 | 537.0 | 546.9 | 556.7 | 566.5 | 576.4 | 586.2 | 596.1 | 605.9 | 615.7 |

Load capacities with luffing jib

Load capacity in 1000 lbs with 135 ft main boom [88/83/75/65°]

| Radius [ft] | Jib length 66 ft | | | | Jib length 115 ft | | | | Jib length 164 ft | | | |
|-------------|-------------------|-------|-------|-------|-------------------|-------|-------|------|-------------------|------|------|------|
| | 88 ° | 83 ° | 75 ° | 65 ° | 88 ° | 83 ° | 75 ° | 65 ° | 88 ° | 83 ° | 75 ° | 65 ° |
| 28.71 | 195.4 | | | | | | | | | | | |
| 40 | 182.9 | | | | 126.3 | | | | | | | |
| 50 | 162.5 | 186.7 | | | 115.9 | | | | 79.0 | | | |
| 55 | 152.1 | 178.2 | | | 110.9 | | | | 77.7 | | | |
| 60 | 137.3 | 168.7 | | | 105.3 | | | | 75.6 | | | |
| 65 | 121.2 | 156.8 | | | 100.1 | 113.8 | | | 73.5 | | | |
| 75 | 88.3 | 129.1 | 178.4 | | 90.3 | 103.1 | | | 70.2 | 73.4 | | |
| 85 | | 99.4 | 153.3 | | 80.7 | 93.7 | | | 66.8 | 71.0 | | |
| 95 | | | 127.2 | | 72.2 | 83.5 | 101.6 | | 64.2 | 67.7 | | |
| 105 | | | 99.5 | | 64.4 | 75.0 | 93.1 | | 60.2 | 65.0 | | |
| 110 | | | | 147.9 | 61.0 | 70.8 | 88.0 | | 58.7 | 63.2 | | |
| 115 | | | | 132.7 | 55.8 | 67.0 | 83.3 | | 57.4 | 61.3 | 65.7 | |
| 120 | | | | 120.9 | 50.6 | 63.7 | 79.6 | | 56.3 | 59.8 | 65.4 | |
| 125 | | | | 109.5 | | 58.9 | 74.9 | | 53.3 | 58.5 | 64.2 | |
| 135 | | | | | | 49.0 | 66.9 | 84.8 | 47.8 | 54.6 | 61.4 | |
| 155 | | | | | | | 50.6 | 69.2 | 38.5 | 44.7 | 54.2 | |
| 165 | | | | | | | | 62.4 | 33.4 | 40.2 | 48.9 | 58.8 |
| 170 | | | | | | | | 59.0 | 32.0 | 37.6 | 46.6 | 57.8 |
| 175 | | | | | | | | 55.6 | | 35.1 | 44.6 | 54.8 |
| 185 | | | | | | | | | | 31.4 | 40.4 | 50.2 |
| 200 | | | | | | | | | | | 33.8 | 43.7 |
| 220 | | | | | | | | | | | | 36.7 |
| Radius [ft] | Jib length 213 ft | | | | Jib length 262 ft | | | | Jib length 312 ft | | | |
| | 88 ° | 83 ° | 75 ° | 65 ° | 88 ° | 83 ° | 75 ° | 65 ° | 88 ° | 83 ° | 75 ° | 65 ° |
| 60 | 49.2 | | | | | | | | | | | |
| 70 | 47.7 | | | | 31.1 | | | | | | | |
| 85 | 44.8 | | | | 29.4 | | | | 17.9 | | | |
| 90 | 44.1 | 45.6 | | | 28.8 | | | | 17.6 | | | |
| 105 | 41.6 | 43.6 | | | 26.8 | 27.7 | | | 16.4 | | | |
| 120 | 39.7 | 41.2 | | | 25.1 | 26.4 | | | 15.3 | 16.0 | | |
| 140 | 37.1 | 38.6 | 40.5 | | 23.4 | 24.2 | | | 14.0 | 14.8 | | |
| 160 | 34.1 | 36.5 | 38.2 | | 21.7 | 22.6 | 23.7 | | 12.9 | 13.4 | | |
| 180 | 30.2 | 32.6 | 36.3 | | 20.5 | 21.2 | 22.2 | | 11.8 | 12.4 | 13.1 | |
| 190 | 28.8 | 30.9 | 34.6 | 35.8 | 20.0 | 20.6 | 21.5 | | 11.4 | 11.9 | 12.7 | |
| 220 | 19.8 | 24.4 | 29.9 | 33.2 | 18.7 | 19.2 | 19.8 | 20.2 | 10.2 | 10.7 | 11.3 | |
| 230 | | 21.4 | 27.6 | 31.3 | 18.4 | 18.8 | 19.3 | 19.9 | 9.7 | 10.3 | 10.8 | |
| 250 | | | 22.6 | 28.6 | 15.3 | 17.2 | 18.5 | 19.0 | 8.9 | 9.4 | 10.2 | 10.5 |
| 265 | | | | 25.8 | 12.8 | 15.1 | 17.6 | 18.4 | 8.4 | 8.9 | 9.5 | 10.0 |
| 270 | | | | 24.8 | | | 14.4 | 17.1 | 8.3 | 8.8 | 9.4 | 9.8 |
| 280 | | | | | | | 13.0 | 16.1 | 7.8 | 8.4 | 9.0 | 9.5 |
| 295 | | | | | | | | 14.7 | 7.2 | 7.8 | 8.5 | 9.0 |
| 315 | | | | | | | | | 6.0 | 6.9 | 7.9 | 8.5 |
| 320 | | | | | | | | | | 6.7 | 7.7 | 8.4 |
| 325 | | | | | | | | 15.8 | | 6.4 | 7.5 | 8.2 |
| 345 | | | | | | | | | | | 6.4 | 7.7 |
| 365 | | | | | | | | | | | | 7.1 |

Carbody counterweight: 126,100 lbs with 3.9 ft flat track pads
 Rear counterweight: 163,200/229,300/273,400 lbs
 Suspended counterweight: 4,400-264,600 lbs / radius 40-51.8 ft

TLT 14168081/0. Above load charts are for reference only. For actual lift duty please refer to load chart in operator's cabin or manual. Otherwise we recommend you to plan your lifting job using Crane Planner 2.0.

Load capacities with luffing jib

Load capacity in 1000 lbs with 194 ft main boom [88/83/75/65°]

| Radius [ft] | Jib length 66 ft | | | | Jib length 115 ft | | | | Jib length 164 ft | | | |
|-------------|-------------------|-------|-------|-------|-------------------|-------|------|------|-------------------|------|------|------|
| | 88° | 83° | 75° | 65° | 88° | 83° | 75° | 65° | 88° | 83° | 75° | 65° |
| 30.77 | 184.9 | | | | | | | | | | | |
| 40 | 167.5 | | | | | | | | | | | |
| 50 | 152.0 | | | | 111.1 | | | | | | | |
| 55 | 145.5 | 180.5 | | | 106.4 | | | | 73.4 | | | |
| 70 | 114.8 | 155.5 | | | 94.6 | 109.1 | | | 68.6 | | | |
| 75 | 97.9 | 148.1 | | | 90.5 | 105.3 | | | 67.3 | | | |
| 85 | | 122.0 | | | 81.3 | 97.3 | | | 64.3 | 69.5 | | |
| 90 | | 108.2 | 170.3 | | 77.9 | 94.2 | | | 63.0 | 68.2 | | |
| 95 | | 90.7 | 163.0 | | 73.7 | 88.7 | | | 62.0 | 66.8 | | |
| 110 | | | 127.8 | | 62.9 | 76.4 | 97.8 | | 58.0 | 63.0 | | |
| 120 | | | 101.3 | | 53.3 | 68.5 | 91.5 | | 56.0 | 60.4 | | |
| 125 | | | | | 48.1 | 65.2 | 87.1 | | 54.2 | 59.0 | | |
| 135 | | | | 142.9 | | 56.6 | 79.1 | | 48.9 | 57.1 | 63.0 | |
| 140 | | | | 131.8 | | 51.7 | 74.8 | | 46.5 | 55.5 | 61.9 | |
| 150 | | | | 109.8 | | | 67.0 | | 42.4 | 50.2 | 59.7 | |
| 160 | | | | | | | 59.7 | 82.8 | 37.6 | 45.5 | 56.9 | |
| 170 | | | | | | | 51.4 | 76.8 | 32.2 | 41.5 | 54.0 | |
| 175 | | | | | | | | 73.1 | 30.0 | 39.1 | 51.3 | |
| 190 | | | | | | | | 62.5 | | 33.0 | 44.5 | 56.4 |
| 200 | | | | | | | | 56.0 | | | 40.6 | 54.0 |
| 215 | | | | | | | | | | | 34.3 | 47.6 |
| 245 | | | | | | | | | | | | 36.9 |
| Radius [ft] | Jib length 213 ft | | | | Jib length 262 ft | | | | Jib length 312 ft | | | |
| | 88° | 83° | 75° | 65° | 88° | 83° | 75° | 65° | 88° | 83° | 75° | 65° |
| 65 | 46.7 | | | | | | | | | | | |
| 75 | 44.8 | | | | 29.5 | | | | | | | |
| 85 | 43.1 | | | | 28.3 | | | | 17.3 | | | |
| 100 | 41.0 | 43.4 | | | 26.4 | | | | 16.1 | | | |
| 115 | 39.0 | 41.5 | | | 25.0 | 26.7 | | | 14.9 | | | |
| 130 | 37.2 | 39.4 | | | 23.5 | 25.1 | | | 14.0 | 15.4 | | |
| 155 | 34.7 | 36.6 | 38.7 | | 21.6 | 22.9 | | | 12.5 | 13.7 | | |
| 175 | 31.2 | 34.3 | 37.0 | | 20.3 | 21.4 | 22.7 | | 11.6 | 12.6 | | |
| 195 | 28.1 | 31.0 | 35.2 | | 19.3 | 20.2 | 21.5 | | 10.6 | 11.7 | 12.4 | |
| 215 | 21.6 | 27.3 | 32.2 | 34.0 | 18.5 | 19.2 | 20.2 | | 9.9 | 10.8 | 11.7 | |
| 220 | 20.3 | 25.9 | 31.4 | 34.0 | 18.3 | 19.0 | 20.0 | | 9.7 | 10.6 | 11.5 | |
| 235 | | 22.0 | 29.4 | 33.1 | 17.6 | 18.4 | 19.4 | | 9.1 | 10.1 | 10.9 | |
| 245 | | | 27.2 | 32.2 | 16.2 | 18.1 | 18.9 | 19.3 | 8.7 | 9.7 | 10.5 | |
| 265 | | | 22.8 | 29.6 | 13.3 | 16.0 | 18.2 | 18.6 | 8.0 | 8.9 | 9.9 | |
| 275 | | | | 28.2 | | 14.8 | 18.0 | 18.3 | 7.7 | 8.6 | 9.5 | 9.9 |
| 285 | | | | 26.6 | | 13.6 | 17.0 | 18.0 | 7.3 | 8.3 | 9.1 | 9.8 |
| 295 | | | | 24.9 | | | 16.1 | 17.8 | 7.0 | 7.9 | 8.8 | 9.4 |
| 310 | | | | | | | 14.9 | 17.4 | 6.5 | 7.4 | 8.4 | 9.0 |
| 315 | | | | | | | | 17.2 | 6.3 | 7.2 | 8.2 | 8.8 |
| 345 | | | | | | | | 15.9 | | | 7.3 | 8.1 |
| 360 | | | | | | | | | | | 6.5 | 7.8 |
| 390 | | | | | | | | | | | | 7.2 |

Carbody counterweight: 126,100 lbs with 3.9 ft flat track pads
 Rear counterweight: 163,200/229,300/273,400 lbs
 Suspended counterweight: 4,400-264,600 lbs / radius 40-51.8 ft

TLT 14168081/0. Above load charts are for reference only. For actual lift duty please refer to load chart in operator's cabin or manual. Otherwise we recommend you to plan your lifting job using Crane Planner 2.0.

Load capacities with luffing jib

Load capacity in 1000 lbs with 253 ft main boom [88/83/75/65°]

| Radius [ft] | Jib length 66 ft | | | | Jib length 115 ft | | | | Jib length 164 ft | | | |
|-------------|-------------------|-------|-------|-------|-------------------|------|------|------|-------------------|------|------|------|
| | 88 ° | 83 ° | 75 ° | 65 ° | 88 ° | 83 ° | 75 ° | 65 ° | 88 ° | 83 ° | 75 ° | 65 ° |
| 32.83 | 149.4 | | | | | | | | | | | |
| 40 | 142.6 | | | | | | | | | | | |
| 50 | 129.4 | | | | 100.6 | | | | | | | |
| 55 | 123.6 | | | | 97.9 | | | | 67.2 | | | |
| 65 | 114.8 | 150.7 | | | 92.1 | | | | 65.4 | | | |
| 75 | 102.5 | 135.8 | | | 86.7 | 99.7 | | | 63.1 | | | |
| 80 | 86.8 | 129.6 | | | 82.8 | 98.3 | | | 62.2 | | | |
| 90 | | 118.7 | | | 76.5 | 92.1 | | | 59.6 | 64.5 | | |
| 100 | | 97.7 | | | 69.9 | 86.2 | | | 57.7 | 63.1 | | |
| 105 | | | 147.8 | | 66.6 | 82.4 | | | 56.6 | 62.1 | | |
| 125 | | | 123.6 | | 50.6 | 69.0 | 91.2 | | 53.4 | 58.0 | | |
| 135 | | | 102.0 | | | 63.2 | 87.3 | | 48.9 | 56.1 | | |
| 150 | | | | | | 49.2 | 77.5 | | 43.1 | 52.8 | 59.2 | |
| 160 | | | | 109.0 | | | 70.0 | | 38.9 | 48.1 | 57.8 | |
| 170 | | | | 101.9 | | | 63.8 | | 33.6 | 44.1 | 56.2 | |
| 175 | | | | 99.0 | | | 59.9 | | 30.8 | 42.5 | 55.4 | |
| 185 | | | | | | | 51.8 | 79.6 | | 37.9 | 53.6 | |
| 195 | | | | | | | | 75.1 | | 33.0 | 48.6 | |
| 215 | | | | | | | | 62.2 | | | 40.7 | 53.4 |
| 225 | | | | | | | | 56.0 | | | 36.6 | 52.3 |
| 230 | | | | | | | | | | | 34.5 | 51.4 |
| 270 | | | | | | | | | | | | 37.0 |
| Radius [ft] | Jib length 213 ft | | | | Jib length 262 ft | | | | Jib length 312 ft | | | |
| | 88 ° | 83 ° | 75 ° | 65 ° | 88 ° | 83 ° | 75 ° | 65 ° | 88 ° | 83 ° | 75 ° | 65 ° |
| 65 | 43.5 | | | | | | | | | | | |
| 75 | 42.3 | | | | 27.8 | | | | | | | |
| 85 | 40.8 | | | | 27.0 | | | | 16.2 | | | |
| 105 | 38.2 | 40.8 | | | 24.8 | | | | 15.1 | | | |
| 120 | 36.7 | 39.4 | | | 23.5 | 25.2 | | | 14.0 | | | |
| 135 | 35.0 | 37.7 | | | 22.2 | 24.1 | | | 13.2 | 14.5 | | |
| 170 | 31.4 | 34.3 | 36.6 | | 19.9 | 21.5 | | | 11.5 | 12.7 | | |
| 190 | 29.1 | 32.0 | 35.2 | | 19.0 | 20.1 | 21.6 | | 10.5 | 11.8 | | |
| 210 | 24.1 | 29.6 | 33.7 | | 18.1 | 19.2 | 20.6 | | 9.8 | 10.9 | 11.8 | |
| 220 | 21.0 | 28.0 | 32.8 | | 17.8 | 18.8 | 20.1 | | 9.5 | 10.5 | 11.6 | |
| 240 | | 22.3 | 30.3 | 32.1 | 16.8 | 18.0 | 19.1 | | 8.6 | 9.9 | 10.8 | |
| 245 | | 21.3 | 29.8 | 32.1 | 16.1 | 17.8 | 18.9 | | 8.4 | 9.6 | 10.7 | |
| 270 | | | 24.8 | 31.0 | 13.0 | 16.0 | 18.0 | 18.3 | 7.6 | 8.7 | 9.8 | |
| 280 | | | 22.8 | 30.0 | | 15.0 | 17.7 | 18.2 | 7.3 | 8.4 | 9.6 | |
| 290 | | | | 29.3 | | 13.9 | 17.4 | 17.9 | 7.0 | 8.0 | 9.2 | |
| 300 | | | | 28.0 | | | 16.7 | 17.6 | 6.7 | 7.8 | 8.8 | 9.4 |
| 320 | | | | 24.8 | | | 15.2 | 17.1 | 6.0 | 7.2 | 8.2 | 9.0 |
| 325 | | | | | | | 14.9 | 17.0 | | 7.0 | 8.1 | 8.8 |
| 340 | | | | | | | | 16.7 | | 6.6 | 7.8 | 8.4 |
| 370 | | | | | | | | 15.8 | | | 7.0 | 7.8 |
| 375 | | | | | | | | | | | 6.5 | 7.7 |
| 415 | | | | | | | | | | | | 7.2 |

Carbody counterweight: 126,100 lbs with 3.9 ft flat track pads
 Rear counterweight: 163,200/229,300/273,400 lbs
 Suspended counterweight: 4,400-264,600 lbs / radius 40-51.8 ft

TLT 14168081/0. Above load charts are for reference only. For actual lift duty please refer to load chart in operator's cabin or manual. Otherwise we recommend you to plan your lifting job using Crane Planner 2.0.

Load capacities with luffing jib

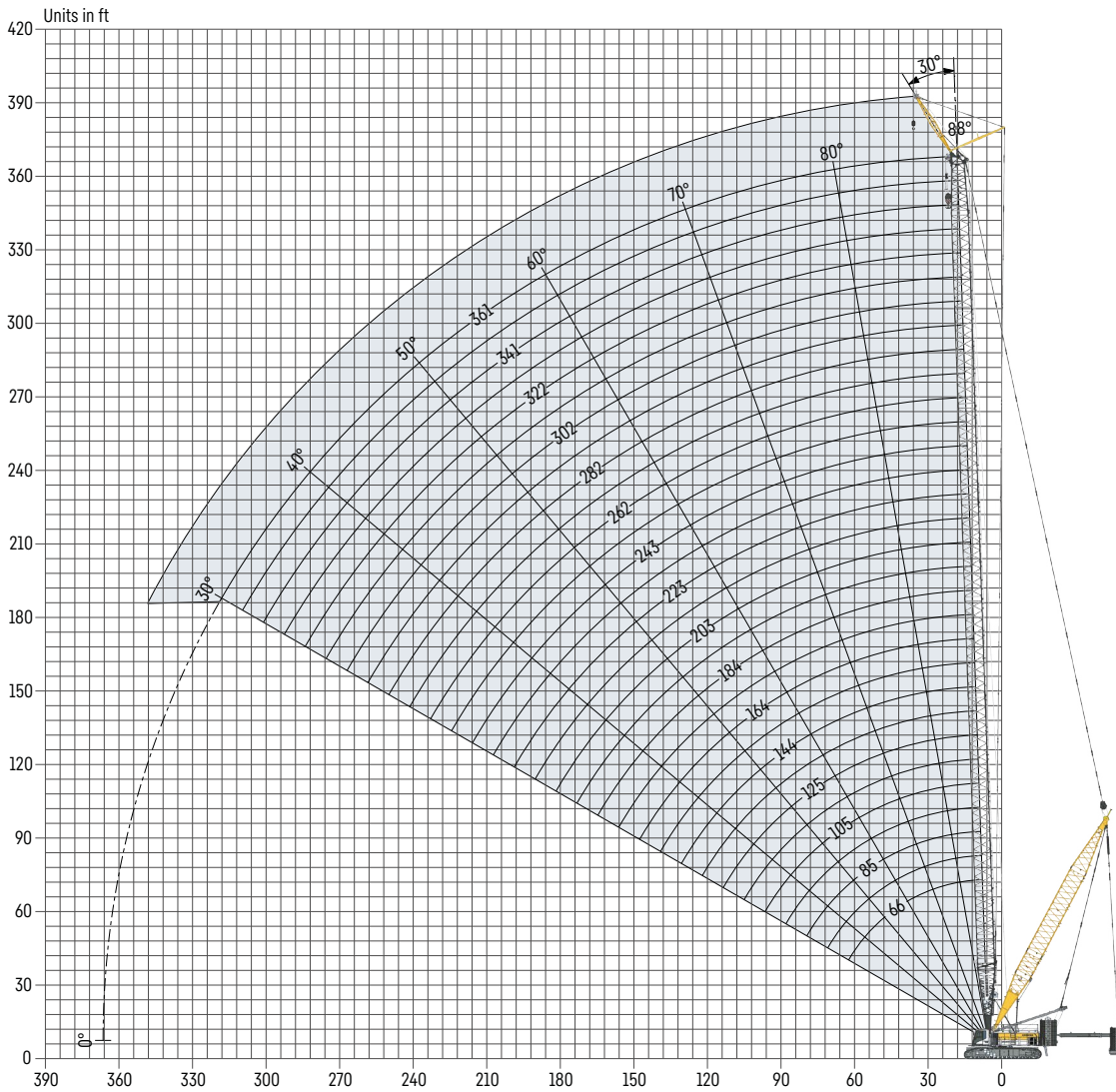
Load capacity in 1000 lbs with 302 ft main boom [88/83/75/65°]

| Radius (ft) | Jib length 75 ft | | | | Jib length 115 ft | | | | Jib length 164 ft | | | |
|-------------|-------------------|-------|-------|------|-------------------|------|------|------|-------------------|------|------|------|
| | 88 ° | 83 ° | 75 ° | 65 ° | 88 ° | 83 ° | 75 ° | 65 ° | 88 ° | 83 ° | 75 ° | 65 ° |
| 36.6 | 114.8 | | | | | | | | | | | |
| 50 | 109.7 | | | | 87.7 | | | | | | | |
| 60 | 100.7 | | | | 84.1 | | | | 60.5 | | | |
| 70 | 93.8 | 118.6 | | | 79.5 | | | | 59.0 | | | |
| 85 | 82.8 | 110.1 | | | 72.5 | 87.2 | | | 55.9 | | | |
| 90 | 75.5 | 105.8 | | | 70.3 | 85.5 | | | 54.6 | | | |
| 100 | | 98.7 | | | 65.7 | 81.2 | | | 52.6 | 59.0 | | |
| 115 | | 82.4 | | | 58.9 | 73.9 | | | 48.6 | 56.5 | | |
| 125 | | | 116.5 | | 51.2 | 69.2 | | | 46.5 | 54.8 | | |
| 130 | | | 113.9 | | 47.1 | 66.3 | | | 45.4 | 54.0 | | |
| 140 | | | 107.2 | | | 61.6 | 82.4 | | 43.0 | 52.2 | | |
| 155 | | | 91.5 | | | 50.0 | 76.6 | | 39.9 | 49.6 | | |
| 160 | | | 82.0 | | | | 74.0 | | 38.2 | 47.8 | 55.0 | |
| 175 | | | | | | | 66.1 | | 31.5 | 43.2 | 54.0 | |
| 185 | | | | 83.9 | | | 61.2 | | | 40.3 | 52.8 | |
| 195 | | | | 79.1 | | | 53.9 | | | 35.8 | 51.7 | |
| 205 | | | | 74.6 | | | | 72.9 | | 27.9 | 48.3 | |
| 210 | | | | 72.6 | | | | 70.9 | | | 46.5 | |
| 235 | | | | | | | | 62.1 | | | 37.8 | 50.2 |
| 240 | | | | | | | | 59.3 | | | 35.8 | 50.1 |
| 245 | | | | | | | | 56.4 | | | 33.7 | 49.8 |
| 295 | | | | | | | | | | | | 35.4 |
| Radius (ft) | Jib length 213 ft | | | | Jib length 262 ft | | | | Jib length 312 ft | | | |
| | 88 ° | 83 ° | 75 ° | 65 ° | 88 ° | 83 ° | 75 ° | 65 ° | 88 ° | 83 ° | 75 ° | 65 ° |
| 70 | 40.2 | | | | | | | | | | | |
| 75 | 39.5 | | | | | | | | | | | |
| 80 | 38.9 | | | | 25.9 | | | | | | | |
| 90 | 37.6 | | | | 25.0 | | | | 15.2 | | | |
| 100 | 36.6 | | | | 24.1 | | | | 14.6 | | | |
| 110 | 35.4 | 38.0 | | | 23.2 | | | | 14.0 | | | |
| 125 | 34.0 | 36.9 | | | 22.0 | 23.7 | | | 13.1 | | | |
| 140 | 32.3 | 35.4 | | | 20.9 | 22.9 | | | 12.4 | 13.8 | | |
| 180 | 28.2 | 32.0 | 34.3 | | 18.6 | 20.2 | | | 10.6 | 11.9 | | |
| 200 | 25.9 | 30.1 | 33.4 | | 17.8 | 19.1 | 20.5 | | 9.7 | 11.1 | | |
| 225 | 20.3 | 27.7 | 31.8 | | 17.0 | 18.1 | 19.6 | | 8.9 | 10.0 | 11.2 | |
| 250 | | 21.2 | 29.8 | | 15.2 | 17.2 | 18.5 | | 7.9 | 9.2 | 10.4 | |
| 265 | | | 28.7 | 30.2 | 13.6 | 16.7 | 18.0 | | 7.4 | 8.7 | 9.9 | |
| 270 | | | 27.6 | 30.2 | 13.1 | 16.2 | 17.8 | | 7.3 | 8.5 | 9.8 | |
| 290 | | | 23.0 | 29.7 | | 14.3 | 17.2 | 17.4 | 6.7 | 7.8 | 9.2 | |
| 300 | | | | 29.2 | | 13.4 | 17.0 | 17.4 | 6.4 | 7.6 | 8.9 | |
| 320 | | | | 27.8 | | | 15.9 | 17.0 | 5.8 | 7.1 | 8.2 | 8.9 |
| 340 | | | | 24.7 | | | 14.7 | 16.6 | | 6.6 | 7.7 | 8.5 |
| 345 | | | | | | | | 16.5 | | 6.4 | 7.6 | 8.4 |
| 385 | | | | | | | | 15.7 | | | 6.9 | 7.5 |
| 390 | | | | | | | | 15.6 | | | | 7.4 |
| 435 | | | | | | | | | | | | 7.0 |

Carbody counterweight: 126,100 lbs with 3.9 ft flat track pads
 Rear counterweight: 163,200/229,300/273,400 lbs
 Suspended counterweight: 4,400-264,600 lbs / radius 40-51.8 ft

TLT 14168081/0. Above load charts are for reference only. For actual lift duty please refer to load chart in operator's cabin or manual. Otherwise we recommend you to plan your lifting job using Crane Planner 2.0.

Fixed jib 1507.20 (26 ft)



Maximum load capacity in 1000 lbs with 26 ft jib length

| | | | | | | | | | | | | | | | | | | | | | | | Main boom [ft] | | | | |
|-------|-------|-------|-------|-------|-------|-------|-------|-------|-------|-------|-------|-------|-------|-------|-------|-------|-------|-------|-------|-------|-------|-------|----------------|--|--|--|--|
| 135 | 144 | 154 | 164 | 174 | 184 | 194 | 203 | 213 | 223 | 233 | 243 | 253 | 262 | 272 | 282 | 292 | 302 | 312 | 322 | 331 | 341 | 351 | 361 | | | | |
| 257.9 | 257.9 | 257.9 | 257.9 | 257.9 | 257.9 | 257.9 | 257.9 | 257.9 | 257.9 | 257.9 | 242.9 | 231.1 | 213.2 | 202.8 | 187.7 | 179.3 | 167.4 | 159.0 | 149.3 | 141.1 | 131.7 | 124.5 | 117.6 | | | | |

Maximum pulley height in [ft] with 26 ft jib length

| | | | | | | | | | | | | | | | | | | | | | | | Main boom [ft] | | | | |
|-------|-------|-------|-------|-------|-------|-------|-------|-------|-------|-------|-------|-------|-------|-------|-------|-------|-------|-------|-------|-------|-------|-------|----------------|--|--|--|--|
| 135 | 144 | 154 | 164 | 174 | 184 | 194 | 203 | 213 | 223 | 233 | 243 | 253 | 262 | 272 | 282 | 292 | 302 | 312 | 322 | 331 | 341 | 351 | 361 | | | | |
| 166.7 | 176.4 | 186.2 | 196.0 | 205.8 | 215.6 | 225.4 | 235.2 | 245.0 | 254.8 | 264.6 | 274.4 | 284.2 | 294.1 | 303.9 | 313.7 | 323.5 | 333.3 | 343.1 | 353.0 | 362.8 | 372.6 | 382.4 | 392.3 | | | | |

Load capacities with fixed jib

Load capacity in 1000 lbs – 135 ft main boom

| Radius [ft] | Jib length 26 ft |
|-------------|------------------|
| 28.7 | 257.9 |
| 40 | 257.9 |
| 50 | 251.3 |
| 60 | 235.8 |
| 70 | 221.7 |
| 80 | 208.0 |
| 90 | 197.0 |
| 100 | 189.2 |
| 110 | 180.7 |
| 120 | 171.1 |
| 130 | 155.2 |
| 150 | 125.9 |

Load capacity in 1000 lbs – 174 ft main boom

| Radius [ft] | Jib length 26 ft |
|-------------|------------------|
| 31.07 | 257.9 |
| 50 | 257.9 |
| 60 | 247.1 |
| 70 | 233.8 |
| 80 | 222.8 |
| 90 | 211.7 |
| 100 | 203.6 |
| 120 | 168.8 |
| 140 | 139.0 |
| 160 | 116.9 |
| 170 | 107.6 |
| 185 | 95.8 |

Load capacity in 1000 lbs – 213 ft main boom

| Radius [ft] | Jib length 26 ft |
|-------------|------------------|
| 33.31 | 257.9 |
| 50 | 257.7 |
| 60 | 252.3 |
| 70 | 240.4 |
| 80 | 230.1 |
| 100 | 201.8 |
| 120 | 166.1 |
| 140 | 136.3 |
| 160 | 114.2 |
| 180 | 97.2 |
| 200 | 83.3 |
| 220 | 66.4 |

Load capacity in 1000 lbs – 262 ft main boom

| Radius [ft] | Jib length 26 ft |
|-------------|------------------|
| 36.03 | 213.2 |
| 60 | 213.2 |
| 80 | 213.2 |
| 90 | 213.0 |
| 100 | 198.1 |
| 120 | 162.7 |
| 140 | 132.5 |
| 160 | 110.4 |
| 180 | 93.4 |
| 200 | 79.6 |
| 240 | 59.1 |
| 260 | 51.0 |

Load capacity in 1000 lbs – 312 ft main boom

| Radius [ft] | Jib length 26 ft |
|-------------|------------------|
| 38.7 | 159.0 |
| 60 | 158.5 |
| 80 | 158.5 |
| 100 | 158.5 |
| 120 | 153.4 |
| 140 | 129.0 |
| 160 | 106.5 |
| 180 | 89.5 |
| 200 | 75.7 |
| 240 | 55.4 |
| 280 | 40.4 |
| 300 | 34.4 |

Load capacity in 1000 lbs – 361 ft main boom

| Radius [ft] | Jib length 26 ft |
|-------------|------------------|
| 41.34 | 117.6 |
| 80 | 117.6 |
| 120 | 117.6 |
| 140 | 117.6 |
| 160 | 102.4 |
| 180 | 85.3 |
| 200 | 71.5 |
| 240 | 51.2 |
| 260 | 43.2 |
| 300 | 30.8 |
| 320 | 25.4 |
| 345 | 19.6 |

Carbody counterweight: 126,100 lbs with 3.9 ft flat track pads
 Rear counterweight: 163,200/229,300/273,400 lbs
 Suspended counterweight: 4,400-264,600 lbs / radius 40-51.8 ft

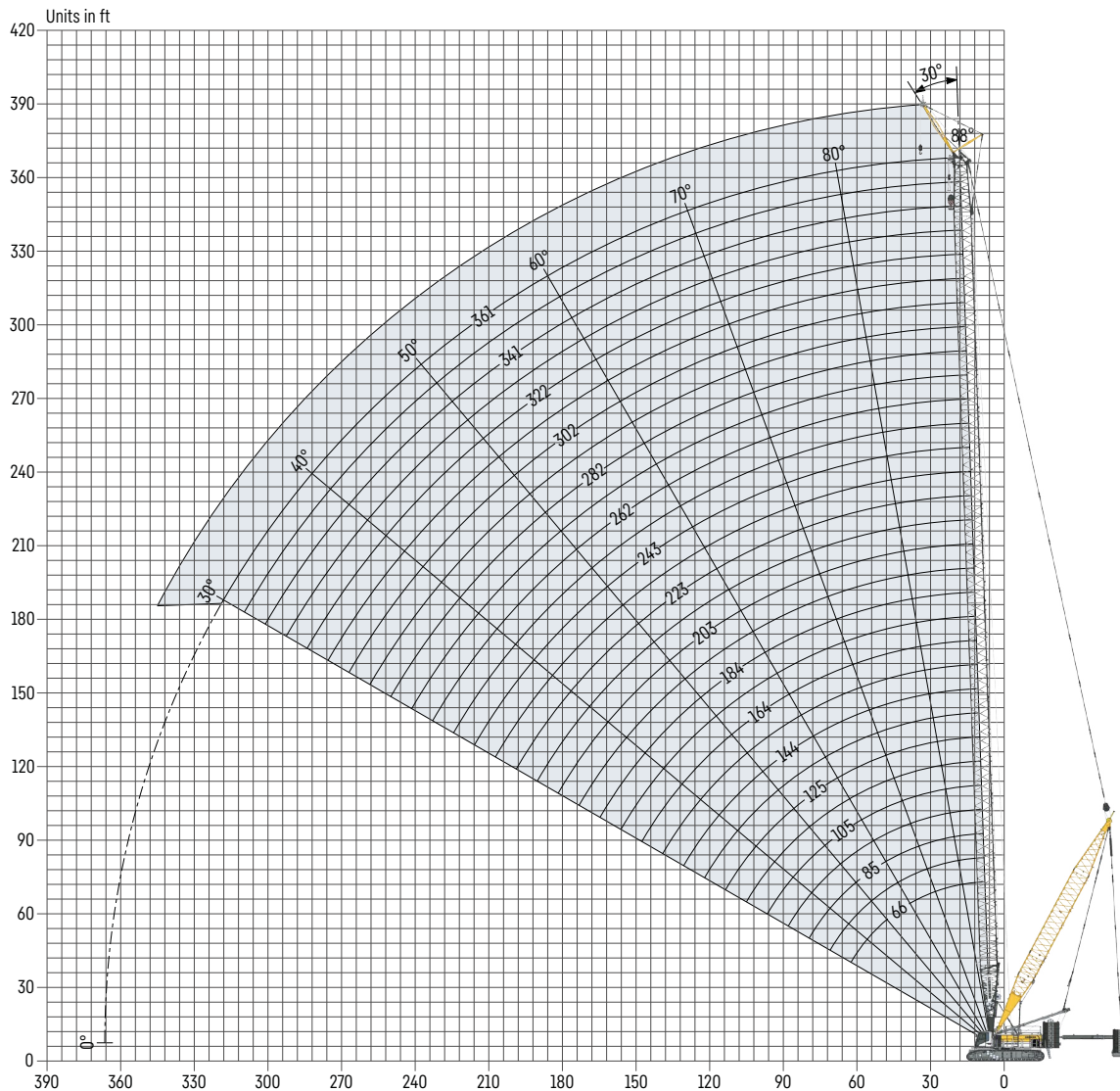
TLT 14168073/0. Above load charts are for reference only. For actual lift duty please refer to load chart in operator's cabin or manual. Otherwise we recommend you to plan your lifting job using Crane Planner 2.0.



Crane Planner 2.0



Fixed jib 0906.21 (23 ft)



Maximum load capacity in 1000 lbs with 23 ft jib length

| Main boom [ft] | | | | | | | | | | | | | | | | | | | | |
|----------------|-------|-------|-------|-------|-------|-------|-------|-------|-------|-------|-------|-------|-------|-------|-------|-------|-------|-------|-------|-------|
| 164 | 174 | 184 | 194 | 203 | 213 | 223 | 233 | 243 | 253 | 262 | 272 | 282 | 292 | 302 | 312 | 322 | 331 | 341 | 351 | 361 |
| 181.8 | 181.5 | 181.1 | 180.8 | 180.5 | 180.1 | 179.7 | 179.7 | 179.3 | 179.0 | 178.7 | 178.2 | 177.7 | 177.3 | 165.8 | 154.4 | 145.2 | 139.9 | 128.5 | 122.8 | 115.0 |

Maximum pulley height in [ft] with 23 ft jib length

| Main boom [ft] | | | | | | | | | | | | | | | | | | | | |
|----------------|-------|-------|-------|-------|-------|-------|-------|-------|-------|-------|-------|-------|-------|-------|-------|-------|-------|-------|-------|-------|
| 164 | 174 | 184 | 194 | 203 | 213 | 223 | 233 | 243 | 253 | 262 | 272 | 282 | 292 | 302 | 312 | 322 | 331 | 341 | 351 | 361 |
| 192.5 | 202.4 | 212.2 | 222.0 | 231.9 | 241.7 | 251.5 | 261.3 | 271.2 | 281.0 | 290.8 | 300.7 | 310.5 | 320.3 | 330.1 | 340.0 | 349.8 | 359.6 | 369.5 | 379.3 | 389.1 |

Load capacities with fixed jib

Load capacity in 1000 lbs – 164 ft main boom

| Radius [ft] | Jib length 26 ft |
|-------------|------------------|
| 29.85 | 181.8 |
| 40 | 168.4 |
| 50 | 158.3 |
| 60 | 149.0 |
| 70 | 140.6 |
| 80 | 133.8 |
| 90 | 128.6 |
| 100 | 123.2 |
| 120 | 114.9 |
| 140 | 109.0 |
| 160 | 105.7 |
| 170 | 105.2 |

Load capacity in 1000 lbs – 203 ft main boom

| Radius [ft] | Jib length 26 ft |
|-------------|------------------|
| 31.91 | 180.5 |
| 40 | 171.7 |
| 50 | 162.8 |
| 60 | 154.6 |
| 70 | 147.6 |
| 90 | 135.2 |
| 110 | 126.2 |
| 130 | 118.4 |
| 150 | 112.6 |
| 170 | 106.9 |
| 190 | 91.7 |
| 205 | 82.0 |

Load capacity in 1000 lbs – 243 ft main boom

| Radius [ft] | Jib length 26 ft |
|-------------|------------------|
| 33.97 | 179.3 |
| 40 | 173.8 |
| 50 | 165.5 |
| 60 | 158.5 |
| 80 | 146.3 |
| 100 | 136.0 |
| 120 | 127.8 |
| 200 | 82.6 |

Load capacity in 1000 lbs – 282 ft main boom

| Radius [ft] | Jib length 26 ft |
|-------------|------------------|
| 36.03 | 177.7 |
| 40 | 174.6 |
| 50 | 166.9 |
| 60 | 161.3 |
| 80 | 149.6 |
| 100 | 140.1 |
| 120 | 132.2 |
| 160 | 110.4 |
| 200 | 79.6 |
| 240 | 59.4 |
| 260 | 51.3 |
| 275 | 46.0 |

Load capacity in 1000 lbs – 322 ft main boom

| Radius [ft] | Jib length 26 ft |
|-------------|------------------|
| 38.09 | 145.2 |
| 50 | 143.8 |
| 60 | 143.8 |
| 80 | 143.4 |
| 100 | 143.1 |
| 120 | 135.6 |
| 140 | 129.7 |
| 160 | 107.3 |
| 200 | 76.5 |
| 240 | 56.4 |
| 280 | 41.5 |
| 310 | 33.1 |

Load capacity in 1000 lbs – 361 ft main boom

| Radius [ft] | Jib length 26 ft |
|-------------|------------------|
| 40.15 | 115.0 |
| 50 | 114.9 |
| 60 | 114.4 |
| 80 | 113.4 |
| 100 | 113.2 |
| 120 | 113.2 |
| 160 | 104.1 |
| 200 | 73.3 |
| 240 | 53.2 |
| 280 | 38.4 |
| 320 | 27.6 |
| 345 | 21.8 |

Carbody counterweight: 126,100 lbs with 3.9 ft flat track pads
 Rear counterweight: 163,200/229,300/273,400 lbs
 Suspended counterweight: 4,400-264,600 lbs / radius 40-51.8 ft

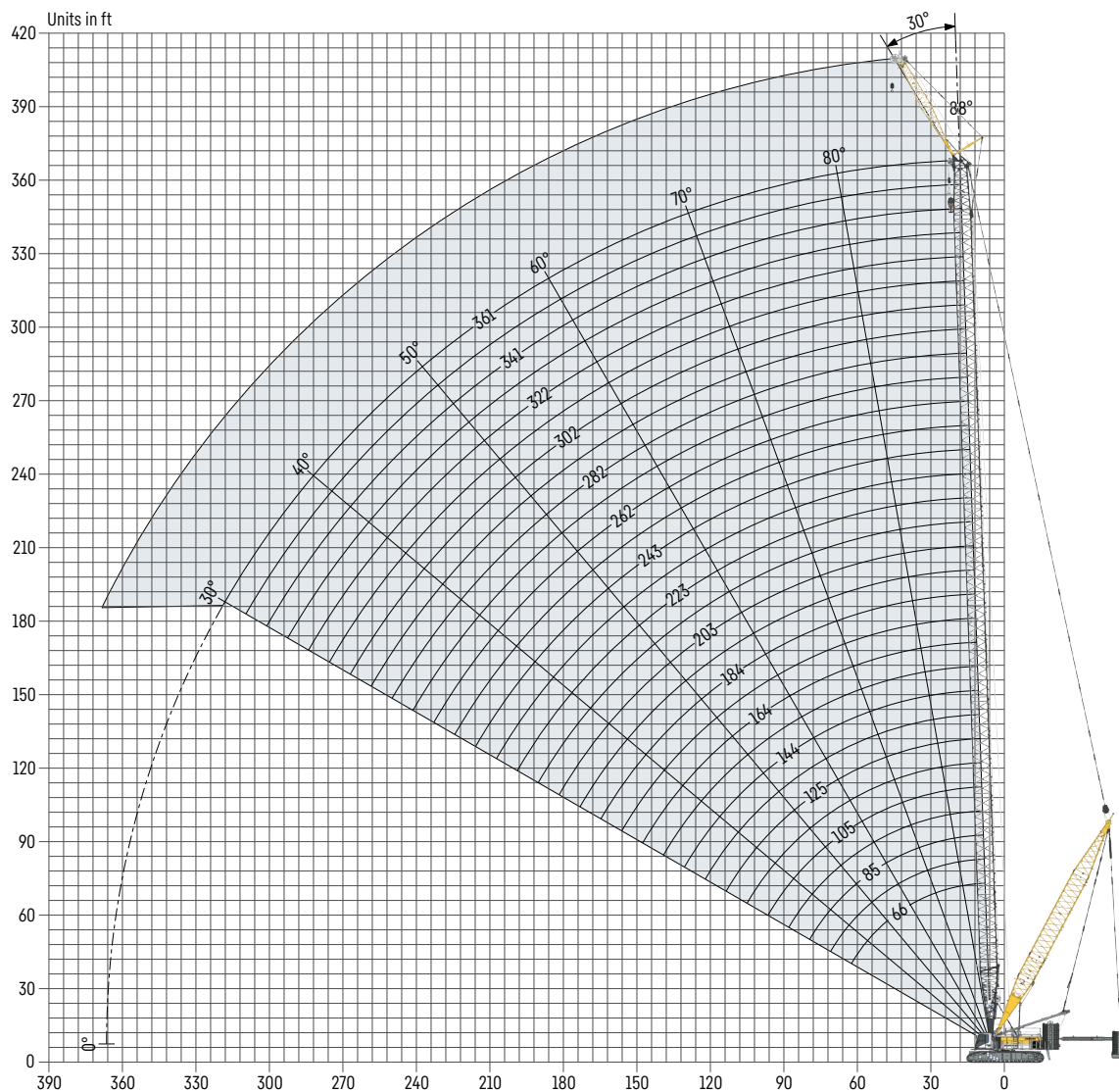
TLT 14168081/0. Above load charts are for reference only. For actual lift duty please refer to load chart in operator's cabin or manual. Otherwise we recommend you to plan your lifting job using Crane Planner 2.0.



Crane Planner 2.0



Fixed jib 1713.XX (46-115 ft)



Jib configuration 1713.xx

| Jib section | Amount of jib sections | | | | | | | |
|------------------------|------------------------|-----------|-----------|-----------|-----------|-----------|------------|------------|
| Jib foot 23 ft | 1 | 1 | 1 | 1 | 1 | 1 | 1 | 1 |
| Jib section 10 ft | | 1 | | | 1 | | 1 | 1 |
| Jib section 20 ft | | | 1 | | | | 1 | 1 |
| Jib section 40 ft | | | | | 1 | 1 | 1 | 1 |
| Jib head 23 ft | 1 | 1 | 1 | 1 | 1 | 1 | 1 | 1 |
| Jib length [ft] | 46 | 56 | 66 | 76 | 85 | 95 | 105 | 115 |

Actual lengths of jib sections are metric (e.g. 3 m, 6 m). The figures shown above are approximate conversions to feet.

Maximum load capacity in 1000 lbs

| Jib length [ft] | Main boom [m] | | | | | | | | | | |
|-----------------|---------------|-------|-------|-------|-------|-------|-------|-------|-------|-------|-------|
| | 164 | 174 | 184 | 194 | 203 | 213 | 223 | 233 | 243 | 253 | 262 |
| 46 | 132.3 | 132.3 | 132.3 | 132.3 | 132.3 | 132.3 | 132.3 | 132.3 | 132.3 | 132.3 | 132.3 |
| 56 | 124.0 | 120.9 | 123.4 | 120.3 | 122.8 | 119.7 | 122.1 | 119.0 | 121.4 | 118.3 | 118.7 |
| 66 | 96.6 | 96.6 | 96.3 | 96.1 | 95.9 | 95.7 | 95.3 | 95.0 | 94.8 | 94.7 | 94.6 |
| 75 | 82.5 | 81.0 | 82.2 | 80.7 | 81.9 | 80.4 | 81.5 | 79.8 | 81.1 | 79.7 | 80.8 |
| 85 | 68.4 | 68.3 | 68.2 | 68.1 | 68.0 | 67.9 | 67.6 | 67.5 | 67.4 | 67.3 | 67.0 |
| 95 | 61.3 | 60.5 | 61.2 | 60.2 | 60.9 | 60.0 | 60.6 | 59.7 | 60.4 | 59.6 | 60.2 |
| 105 | 52.8 | 52.8 | 52.6 | 52.4 | 52.3 | 52.2 | 52.1 | 52.0 | 52.0 | 52.0 | 51.8 |
| 115 | 46.5 | 46.5 | 46.4 | 46.3 | 46.2 | 46.1 | 46.0 | 45.9 | 45.6 | 45.4 | 45.4 |

| Jib length [ft] | Main boom [m] | | | | | | | | | |
|-----------------|---------------|-------|-------|-------|-------|-------|-------|-------|-------|-------|
| | 272 | 282 | 292 | 302 | 312 | 322 | 331 | 341 | 351 | 361 |
| 46 | 132.3 | 132.3 | 132.3 | 129.5 | 126.0 | 121.8 | 118.6 | 114.2 | 110.8 | 106.4 |
| 56 | 114.3 | 114.7 | 110.9 | 110.5 | 106.7 | 106.3 | 103.2 | 102.1 | 99.2 | |
| 66 | 94.5 | 94.1 | 93.8 | 93.0 | 92.4 | 91.9 | 91.6 | 91.3 | 90.8 | |
| 75 | 79.2 | 80.4 | 78.9 | 79.6 | 77.8 | 78.8 | 77.3 | 78.3 | | |
| 85 | 66.8 | 66.8 | 66.7 | 66.4 | 66.4 | 66.4 | 66.4 | 66.4 | | |
| 95 | 59.2 | 59.6 | 58.4 | 59.2 | 58.5 | 59.0 | 58.0 | 58.6 | | |
| 105 | 51.6 | 51.3 | 51.0 | 51.2 | 51.4 | 51.0 | 50.8 | | | |
| 115 | 45.5 | 45.4 | 45.3 | 45.3 | 45.3 | 45.2 | 45.1 | | | |

Example: To achieve a maximum load capacity of 68,000 lbs, a combination of 203 ft main boom with 85 ft jib length can be selected.

Maximum pulley height in ft

| Jib length [ft] | Main boom [m] | | | | | | | | | | |
|-----------------|---------------|-------|-------|-------|-------|-------|-------|-------|-------|-------|-------|
| | 164 | 174 | 184 | 194 | 203 | 213 | 223 | 233 | 243 | 253 | 262 |
| 46 | 217.2 | 227.1 | 236.9 | 246.7 | 256.6 | 266.4 | 276.2 | 286.0 | 295.9 | 305.7 | 315.5 |
| 56 | 226.4 | 236.2 | 246.0 | 255.9 | 265.7 | 275.5 | 285.3 | 295.2 | 305.0 | 314.8 | 324.7 |
| 66 | 235.5 | 245.3 | 255.2 | 265.0 | 274.8 | 284.6 | 294.5 | 304.3 | 314.1 | 324.0 | 333.8 |
| 75 | 244.6 | 254.5 | 264.3 | 274.1 | 283.9 | 293.8 | 303.6 | 313.4 | 323.3 | 333.1 | 342.9 |
| 85 | 253.8 | 263.6 | 273.4 | 283.2 | 293.1 | 302.9 | 312.7 | 322.6 | 332.4 | 342.2 | 352.0 |
| 95 | 262.9 | 272.7 | 282.5 | 292.4 | 302.2 | 312.0 | 321.9 | 331.7 | 341.5 | 351.3 | 361.2 |
| 105 | 272.0 | 281.8 | 291.7 | 301.5 | 311.3 | 321.2 | 331.0 | 340.8 | 350.6 | 360.5 | 370.3 |
| 115 | 281.1 | 291.0 | 300.8 | 310.6 | 320.5 | 330.3 | 340.1 | 349.9 | 359.8 | 369.6 | 379.4 |

| Jib length [ft] | Main boom [m] | | | | | | | | | |
|-----------------|---------------|-------|-------|-------|-------|-------|-------|-------|-------|-------|
| | 272 | 282 | 292 | 302 | 312 | 322 | 331 | 341 | 351 | 361 |
| 46 | 325.4 | 335.2 | 345.0 | 354.8 | 364.7 | 374.5 | 384.3 | 394.2 | 404.0 | 413.8 |
| 56 | 334.5 | 344.3 | 354.1 | 364.0 | 373.8 | 383.6 | 393.5 | 403.3 | 413.1 | |
| 66 | 343.6 | 353.4 | 363.3 | 373.1 | 382.9 | 392.8 | 402.6 | 412.4 | 422.3 | |
| 75 | 352.7 | 362.6 | 372.4 | 382.2 | 392.1 | 401.9 | 411.7 | 421.6 | | |
| 85 | 361.9 | 371.7 | 381.5 | 391.4 | 401.2 | 411.0 | 420.9 | 430.7 | | |
| 95 | 371.0 | 380.8 | 390.7 | 400.5 | 410.3 | 420.1 | 430.0 | 439.8 | | |
| 105 | 380.1 | 390.0 | 399.8 | 409.6 | 419.4 | 429.3 | 439.1 | | | |
| 115 | 389.3 | 399.1 | 408.9 | 418.7 | 428.6 | 438.4 | 448.2 | | | |



Crane Planner 2.0



Load capacities with fixed jib

Load capacity in 1000 lbs with 164 ft main boom

| | Jib length 46 ft | | Jib length 56 ft | | Jib length 75 ft | | Jib length 95 ft | | Jib length 115 ft | | |
|-------|------------------|------|------------------|------|------------------|------|------------------|------|-------------------|------|--|
| | 15° | 30° | 15° | 30° | 15° | 30° | 15° | 30° | 15° | 30° | |
| 30.89 | 132.3 | | | | | | | | | | |
| 40 | 128.5 | | 116.1 | | | | | | | | |
| 50 | 119.8 | 81.4 | 102.9 | 70.1 | 75.5 | | 60.9 | | | | |
| 60 | 107.2 | 76.1 | 93.7 | 66.4 | 68.6 | 48.4 | 55.0 | | 45.1 | | |
| 80 | 90.8 | 67.5 | 78.2 | 58.9 | 58.5 | 42.8 | 46.0 | 33.7 | 37.8 | | |
| 90 | 84.3 | 64.9 | 72.2 | 55.6 | 53.7 | 40.5 | 42.8 | 33.0 | 34.8 | 26.6 | |
| 100 | 78.0 | 62.1 | 67.4 | 52.9 | 49.9 | 38.6 | 39.5 | 31.1 | 33.4 | 25.1 | |
| 140 | 62.5 | 52.9 | 53.7 | 45.1 | 39.1 | 33.3 | 32.2 | 26.0 | 26.1 | 20.6 | |
| 180 | 52.4 | 48.4 | 44.8 | 40.7 | 33.4 | 29.3 | 26.3 | 22.4 | 21.1 | 17.6 | |
| 195 | 48.9 | 47.5 | 42.5 | 40.0 | 31.9 | 28.3 | 24.6 | 21.5 | 19.6 | 16.8 | |
| 205 | | | 40.6 | 39.6 | 30.8 | 28.0 | 23.7 | 21.0 | 18.8 | 16.4 | |
| 225 | | | | | 28.7 | 27.5 | 22.1 | 20.4 | 17.4 | 15.5 | |
| 240 | | | | | | | 21.1 | 20.2 | 16.6 | 15.2 | |
| 260 | | | | | | | | | 15.6 | 14.9 | |

Load capacity in 1000 lbs with 203 ft main boom

| | Jib length 46 ft | | Jib length 56 ft | | Jib length 75 ft | | Jib length 95 ft | | Jib length 115 ft | | |
|-------|------------------|------|------------------|------|------------------|------|------------------|------|-------------------|------|--|
| | 15° | 30° | 15° | 30° | 15° | 30° | 15° | 30° | 15° | 30° | |
| 32.95 | 132.3 | | | | | | | | | | |
| 40 | 131.3 | | 118.3 | | | | | | | | |
| 50 | 124.2 | 83.2 | 106.4 | 70.9 | 77.8 | | | | | | |
| 60 | 114.0 | 78.3 | 99.2 | 66.7 | 70.6 | | 56.6 | | 45.7 | | |
| 80 | 98.7 | 70.5 | 84.5 | 60.8 | 61.5 | 44.0 | 48.3 | 34.4 | 39.2 | | |
| 100 | 85.6 | 65.2 | 72.9 | 55.5 | 53.7 | 40.0 | 42.4 | 32.1 | 34.0 | 25.6 | |
| 120 | 75.6 | 60.4 | 66.2 | 51.5 | 47.8 | 36.7 | 37.2 | 29.4 | 31.4 | 23.3 | |
| 160 | 63.2 | 53.1 | 54.0 | 45.0 | 38.9 | 32.8 | 31.5 | 25.3 | 25.2 | 19.9 | |
| 200 | 54.4 | 48.9 | 46.2 | 41.0 | 33.4 | 29.6 | 26.5 | 22.4 | 21.1 | 17.5 | |
| 225 | 50.4 | 47.7 | 42.8 | 40.0 | 31.7 | 28.2 | 24.1 | 21.2 | 19.0 | 16.4 | |
| 235 | | | 41.6 | 39.7 | 30.8 | 28.0 | 23.4 | 20.8 | 18.4 | 16.0 | |
| 255 | | | | | 29.0 | 27.6 | 22.1 | 20.4 | 17.3 | 15.4 | |
| 275 | | | | | | | 21.0 | 20.2 | 16.3 | 15.1 | |
| 295 | | | | | | | | | 15.5 | 14.9 | |

Load capacity in 1000 lbs with 243 ft main boom

| | Jib length 46 ft | | Jib length 56 ft | | Jib length 75 ft | | Jib length 95 ft | | Jib length 115 ft | | |
|-------|------------------|------|------------------|------|------------------|------|------------------|------|-------------------|------|--|
| | 15° | 30° | 15° | 30° | 15° | 30° | 15° | 30° | 15° | 30° | |
| 35.01 | 132.3 | | | | | | | | | | |
| 40 | 132.3 | | 119.7 | | | | | | | | |
| 50 | 125.7 | 83.9 | 109.4 | | 78.5 | | | | | | |
| 60 | 119.2 | 79.4 | 100.6 | 67.8 | 72.4 | | 57.6 | | | | |
| 80 | 102.4 | 72.3 | 88.1 | 62.6 | 64.3 | 44.6 | 50.2 | 34.7 | 39.8 | | |
| 90 | 97.7 | 69.6 | 83.1 | 59.8 | 60.2 | 42.9 | 46.7 | 33.4 | 37.5 | 27.0 | |
| 100 | 91.4 | 66.9 | 77.7 | 57.8 | 57.1 | 41.0 | 43.9 | 32.9 | 35.1 | 25.9 | |
| 140 | 73.7 | 59.1 | 64.3 | 50.2 | 46.1 | 35.6 | 35.6 | 28.1 | 29.6 | 22.2 | |
| 220 | 55.6 | 49.2 | 46.9 | 41.3 | 33.4 | 29.7 | 26.7 | 22.5 | 21.1 | 17.4 | |
| 260 | 50.0 | 47.6 | 42.3 | 39.8 | 31.2 | 28.0 | 23.6 | 20.8 | 18.3 | 16.0 | |
| 270 | | | 41.4 | 39.6 | 30.4 | 27.9 | 23.0 | 20.5 | 17.8 | 15.7 | |
| 290 | | | | | 29.0 | 27.6 | 21.9 | 20.3 | 16.9 | 15.2 | |
| 310 | | | | | | | 21.0 | 20.1 | 16.2 | 15.0 | |
| 330 | | | | | | | | | 15.5 | 14.9 | |

Carbody counterweight: 126,100 lbs with 3.9 ft flat track pads
 Rear counterweight: 163,200/229,300/273,400 lbs
 Suspended counterweight: 4,400-264,600 lbs / radius 40-51.8 ft

TLT 14168081/0. Above load charts are for reference only. For actual lift duty please refer to load chart in operator's cabin or manual. Otherwise we recommend you to plan your lifting job using Crane Planner 2.0.

Load capacities with fixed jib

Load capacity in 1000 lbs with 282 ft main boom

| | Jib length 46 ft | | Jib length 56 ft | | Jib length 75 ft | | Jib length 95 ft | | Jib length 115 ft | | |
|-------|------------------|------|------------------|------|------------------|------|------------------|------|-------------------|------|--|
| | 15° | 30° | 15° | 30° | 15° | 30° | 15° | 30° | 15° | 30° | |
| 37.07 | 132.3 | | | | | | | | | | |
| 50 | 128.6 | 84.6 | 110.9 | | 79.2 | | | | | | |
| 60 | 121.3 | 80.8 | 102.5 | 68.4 | 73.9 | | 57.7 | | | | |
| 70 | 114.1 | 77.4 | 98.3 | 66.4 | 68.8 | 47.1 | 54.0 | | 43.4 | | |
| 80 | 106.5 | 74.3 | 91.6 | 64.2 | 66.2 | 45.2 | 50.8 | 34.9 | 40.7 | | |
| 90 | 100.7 | 71.4 | 86.3 | 61.4 | 62.1 | 43.7 | 48.1 | 33.5 | 38.5 | 26.6 | |
| 100 | 96.9 | 69.2 | 82.2 | 59.1 | 58.9 | 42.0 | 45.3 | 33.2 | 36.4 | 26.3 | |
| 140 | 79.6 | 61.9 | 67.5 | 52.0 | 48.5 | 36.8 | 37.3 | 29.1 | 31.0 | 22.6 | |
| 220 | 60.0 | 51.4 | 50.7 | 43.2 | 36.0 | 31.1 | 28.7 | 23.4 | 22.4 | 18.1 | |
| 295 | 40.2 | 40.3 | 40.6 | 39.8 | 30.9 | 27.9 | 23.2 | 20.6 | 17.9 | 15.6 | |
| 305 | | | 37.8 | 38.0 | 30.2 | 27.8 | 22.7 | 20.5 | 17.5 | 15.4 | |
| 325 | | | | | 29.0 | 27.6 | 21.8 | 20.3 | 16.8 | 15.1 | |
| 345 | | | | | | | 20.9 | 20.1 | 16.1 | 15.0 | |
| 365 | | | | | | | | | 15.5 | 14.8 | |

Load capacity in 1000 lbs with 322 ft main boom

| | Jib length 46 ft | | Jib length 56 ft | | Jib length 75 ft | | Jib length 95 ft | | Jib length 115 ft | | |
|-------|------------------|------|------------------|------|------------------|------|------------------|------|-------------------|------|--|
| | 15° | 30° | 15° | 30° | 15° | 30° | 15° | 30° | 15° | 30° | |
| 39.13 | 121.8 | | | | | | | | | | |
| 50 | 121.8 | 84.5 | 104.3 | | | | | | | | |
| 60 | 118.5 | 81.3 | 100.6 | 68.4 | 74.2 | | 58.0 | | | | |
| 70 | 116.2 | 77.8 | 98.1 | 66.4 | 69.6 | 47.1 | 54.9 | | 43.8 | | |
| 80 | 109.6 | 75.5 | 94.0 | 64.5 | 66.4 | 45.8 | 51.5 | 35.2 | 41.5 | | |
| 95 | 101.2 | 71.4 | 86.4 | 61.3 | 62.2 | 43.5 | 47.9 | 33.4 | 38.3 | 26.9 | |
| 120 | 91.0 | 66.4 | 76.9 | 57.0 | 55.8 | 40.1 | 42.5 | 31.5 | 33.8 | 24.7 | |
| 160 | 76.8 | 60.5 | 66.4 | 51.0 | 46.9 | 35.9 | 35.9 | 28.0 | 29.6 | 22.0 | |
| 240 | 56.1 | 51.4 | 50.7 | 43.2 | 35.9 | 30.9 | 28.4 | 23.2 | 22.1 | 17.9 | |
| 330 | 28.4 | 28.7 | 29.0 | 29.4 | 30.3 | 27.8 | 22.8 | 20.4 | 17.5 | 15.4 | |
| 340 | | | 26.7 | 27.0 | 28.0 | 27.7 | 22.4 | 20.3 | 17.1 | 15.2 | |
| 360 | | | | | 23.7 | 24.0 | 21.5 | 20.2 | 16.5 | 15.1 | |
| 380 | | | | | | | 20.8 | 20.1 | 15.9 | 15.0 | |
| 400 | | | | | | | | | 15.4 | 14.8 | |

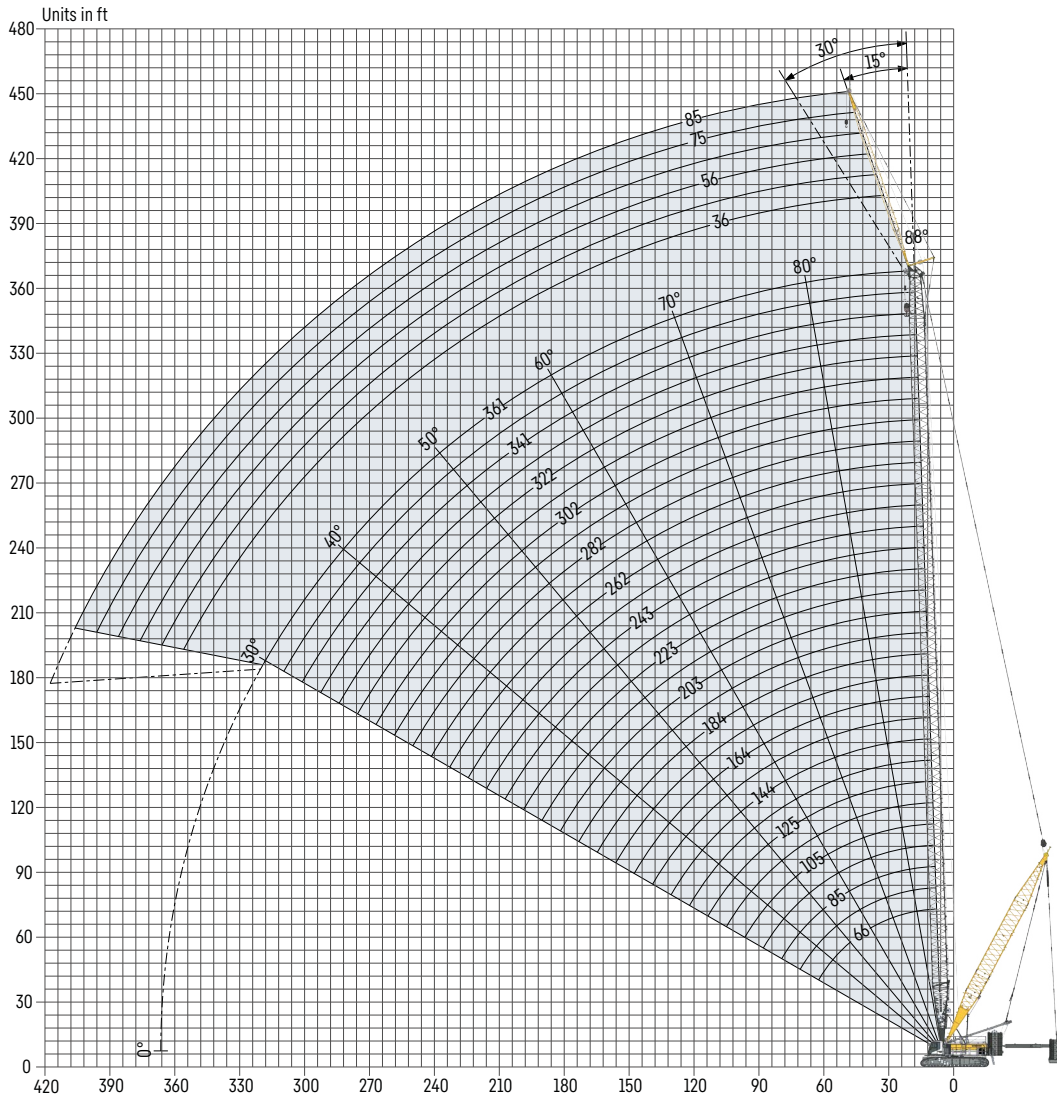
Load capacity in 1000 lbs with 361 ft main boom

| | Jib length 46 ft | | Jib length 56 ft | | Jib length 75 ft | | Jib length 95 ft | | Jib length 115 ft | | |
|-------|------------------|------|------------------|-----|------------------|-----|------------------|-----|-------------------|-----|--|
| | 15° | 30° | 15° | 30° | 15° | 30° | 15° | 30° | 15° | 30° | |
| 41.19 | 106.4 | | | | | | | | | | |
| 55 | 106.4 | 82.8 | | | | | | | | | |
| 60 | 106.4 | 81.3 | | | | | | | | | |
| 80 | 105.4 | 76.2 | | | | | | | | | |
| 100 | 99.5 | 71.8 | | | | | | | | | |
| 120 | 95.5 | 68.2 | | | | | | | | | |
| 140 | 87.2 | 65.5 | | | | | | | | | |
| 160 | 81.1 | 62.4 | | | | | | | | | |
| 180 | 75.3 | 59.7 | | | | | | | | | |
| 200 | 70.0 | 57.0 | | | | | | | | | |
| 240 | 52.8 | 53.1 | | | | | | | | | |
| 280 | 38.1 | 39.0 | | | | | | | | | |
| 320 | 27.7 | 28.3 | | | | | | | | | |
| 365 | 17.9 | 18.1 | | | | | | | | | |

Carbody counterweight: 126,100 lbs with 3.9 ft flat track pads
 Rear counterweight: 163,200/229,300/273,400 lbs
 Suspended counterweight: 4,400-264,600 lbs / radius 40-51.8 ft

TLT 14168081/0. Above load charts are for reference only. For actual lift duty please refer to load chart in operator's cabin or manual. Otherwise we recommend you to plan your lifting job using Crane Planner 2.0.

Fixed jib 1008.xx (36-85 ft)



Jib configuration 1008.xx

| Jib section | Amount of jib sections | | | | | |
|------------------------|------------------------|-----------|-----------|-----------|-----------|-----------|
| | 36 | 46 | 56 | 66 | 76 | 85 |
| Jib foot 18 ft | 1 | | 1 | 1 | 1 | 1 |
| Jib section 10 ft | | 1 | | 1 | | 1 |
| Jib section 20 ft | | | 1 | 1 | 2 | 2 |
| Jib head 18 ft | 1 | 1 | 1 | 1 | 1 | 1 |
| Jib length [ft] | 36 | 46 | 56 | 66 | 76 | 85 |

Actual lengths of jib sections are metric (e.g. 3 m, 6 m). The figures shown above are approximate conversions to feet.

Maximum load capacity in 1000 lbs

| | | Main boom [ft] | | | | | | | | | | | |
|-----------------|------|----------------|------|------|------|------|------|------|------|------|------|------|------|
| | | 144 | 154 | 164 | 174 | 184 | 194 | 203 | 213 | 223 | 233 | 243 | 253 |
| Jib length [ft] | 36 | 89.6 | 89.5 | 89.4 | 89.2 | 99.2 | 99.2 | 99.2 | 99.2 | 99.2 | 99.2 | 99.2 | 99.2 |
| | 46 | 66.2 | 66.2 | 66.1 | 66.1 | 99.2 | 99.2 | 99.2 | 99.2 | 99.2 | 99.2 | 99.2 | 99.2 |
| | 56 | 50.7 | 50.6 | 50.6 | 50.6 | 89.8 | 89.5 | 89.2 | 88.8 | 88.4 | 87.8 | 87.2 | 86.5 |
| | 66 | 40.9 | 40.7 | 40.6 | 40.6 | 76.1 | 75.6 | 75.2 | 74.9 | 74.6 | 74.1 | 73.8 | 73.2 |
| | 75 | 33.7 | 33.6 | 33.6 | 33.6 | 60.9 | 60.6 | 60.4 | 60.0 | 59.8 | 59.4 | 59.2 | 58.7 |
| 85 | 30.1 | 30.0 | 30.0 | 30.0 | 50.5 | 50.3 | 50.2 | 50.0 | 49.8 | 49.5 | 49.3 | 49.0 | |

| | | Main boom [ft] | | | | | | | | | | | |
|-----------------|------|----------------|------|------|------|------|------|------|------|------|------|------|--|
| | | 262 | 272 | 282 | 292 | 302 | 312 | 322 | 331 | 341 | 351 | 361 | |
| Jib length [ft] | 36 | 99.2 | 99.2 | 99.2 | 99.2 | 99.2 | 99.2 | 99.2 | 99.2 | 99.2 | 98.7 | 96.8 | |
| | 46 | 99.2 | 99.2 | 99.2 | 99.2 | 99.2 | 98.4 | 96.4 | 93.9 | 91.9 | 89.4 | 87.4 | |
| | 56 | 85.9 | 85.3 | 84.7 | 83.7 | 82.8 | 81.8 | 81.0 | 79.8 | 79.0 | 77.7 | 76.6 | |
| | 66 | 72.8 | 72.2 | 71.7 | 71.1 | 70.6 | 69.8 | 69.3 | 68.5 | 67.8 | 67.0 | 66.4 | |
| | 75 | 58.4 | 58.0 | 57.6 | 57.1 | 56.7 | 56.2 | 55.8 | 55.2 | 54.9 | 54.1 | 53.5 | |
| 85 | 48.8 | 48.4 | 48.1 | 47.8 | 47.6 | 47.2 | 46.9 | 46.6 | 46.4 | 45.9 | 45.5 | | |

Example: To achieve a maximum load capacity of 89,800 lbs, a combination of 184 ft main boom with 56 ft jib length can be selected.

Maximum pulley height in ft

| | | Main boom [ft] | | | | | | | | | | | |
|-----------------|-------|----------------|-------|-------|-------|-------|-------|-------|-------|-------|-------|-------|-------|
| | | 144 | 154 | 164 | 174 | 184 | 194 | 203 | 213 | 223 | 233 | 243 | 253 |
| Jib length [ft] | 36 | 185.2 | 195.0 | 204.9 | 214.7 | 228.0 | 237.8 | 247.6 | 257.5 | 267.3 | 277.1 | 286.9 | 296.8 |
| | 46 | 193.0 | 202.8 | 212.6 | 222.4 | 237.1 | 246.9 | 256.7 | 266.5 | 276.4 | 286.2 | 296.0 | 305.9 |
| | 56 | 200.7 | 210.5 | 220.3 | 230.2 | 246.1 | 255.9 | 265.8 | 275.6 | 285.4 | 295.3 | 305.1 | 314.9 |
| | 66 | 208.4 | 218.2 | 228.1 | 237.9 | 255.2 | 265.0 | 274.8 | 284.6 | 294.5 | 304.3 | 314.1 | 324.0 |
| | 75 | 216.1 | 225.9 | 235.8 | 245.6 | 264.2 | 274.0 | 283.8 | 293.7 | 303.5 | 313.3 | 323.2 | 333.0 |
| 85 | 223.8 | 233.6 | 243.4 | 253.3 | 273.2 | 283.0 | 292.9 | 302.7 | 312.5 | 322.3 | 332.2 | 342.0 | |

| | | Main boom [ft] | | | | | | | | | | | |
|-----------------|-------|----------------|-------|-------|-------|-------|-------|-------|-------|-------|-------|-------|--|
| | | 262 | 272 | 282 | 292 | 302 | 312 | 322 | 331 | 341 | 351 | 361 | |
| Jib length [ft] | 36 | 306.6 | 316.4 | 326.3 | 336.1 | 345.9 | 355.7 | 365.6 | 375.4 | 385.2 | 395.1 | 404.9 | |
| | 46 | 315.7 | 325.5 | 335.3 | 345.2 | 355.0 | 364.8 | 374.7 | 384.5 | 394.3 | 404.2 | 414.0 | |
| | 56 | 324.7 | 334.6 | 344.4 | 354.2 | 364.1 | 373.9 | 383.7 | 393.6 | 403.4 | 413.2 | 423.0 | |
| | 66 | 333.8 | 343.6 | 353.4 | 363.3 | 373.1 | 382.9 | 392.8 | 402.6 | 412.4 | 422.2 | 432.1 | |
| | 75 | 342.8 | 352.6 | 362.5 | 372.3 | 382.1 | 392.0 | 401.8 | 411.6 | 421.4 | 431.3 | 441.1 | |
| 85 | 351.8 | 361.7 | 371.5 | 381.3 | 391.1 | 401.0 | 410.8 | 420.6 | 430.5 | 440.3 | 450.1 | | |



Crane Planner 2.0



Load capacities with fixed jib

Load capacity in 1000 lbs with 184 ft main boom

| | Jib length 36 ft | | Jib length 46 ft | | Jib length 56 ft | | Jib length 75 ft | | Jib length 85 ft | |
|-------|------------------|------|------------------|------|------------------|------|------------------|------|------------------|------|
| | 15° | 30° | 15° | 30° | 15° | 30° | 15° | 30° | 15° | 30° |
| 27.23 | 99.2 | | | | | | | | | |
| 40 | 99.2 | 86.0 | 99.2 | | 87.8 | | | | | |
| 50 | 99.2 | 79.5 | 99.1 | 62.5 | 83.2 | 50.2 | 59.0 | | 49.7 | |
| 70 | 99.2 | 69.4 | 85.7 | 54.6 | 68.4 | 44.0 | 51.4 | 33.4 | 44.1 | 29.6 |
| 80 | 99.2 | 66.4 | 77.9 | 51.7 | 65.7 | 41.5 | 47.2 | 31.8 | 41.4 | 27.8 |
| 100 | 88.1 | 60.8 | 66.6 | 46.4 | 56.4 | 37.4 | 40.8 | 28.6 | 35.8 | 24.9 |
| 120 | 76.7 | 55.3 | 60.6 | 42.3 | 49.3 | 34.2 | 35.8 | 26.0 | 33.3 | 22.6 |
| 140 | 68.0 | 51.2 | 54.2 | 39.2 | 44.1 | 33.4 | 33.4 | 23.8 | 29.7 | 20.7 |
| 160 | 63.8 | 48.0 | 49.0 | 36.6 | 39.8 | 31.2 | 30.6 | 22.1 | 26.8 | 19.2 |
| 200 | 53.8 | 44.2 | 41.6 | 33.8 | 34.0 | 28.2 | 25.7 | 19.8 | 22.5 | 17.0 |
| 210 | | | 40.3 | 33.4 | 33.4 | 27.9 | 24.8 | 19.4 | 21.6 | 16.7 |
| 220 | | | | | 33.4 | 27.6 | 24.0 | 19.0 | 20.9 | 16.4 |
| 240 | | | | | | | 22.6 | 18.8 | 19.7 | 16.0 |
| 250 | | | | | | | | | 19.2 | 15.9 |

Load capacity in 1000 lbs with 223 ft main boom

| | Jib length 36 ft | | Jib length 46 ft | | Jib length 56 ft | | Jib length 75 ft | | Jib length 85 ft | |
|-------|------------------|------|------------------|------|------------------|------|------------------|------|------------------|------|
| | 15° | 30° | 15° | 30° | 15° | 30° | 15° | 30° | 15° | 30° |
| 29.29 | 99.2 | | | | | | | | | |
| 40 | 99.2 | 87.6 | 99.2 | | 87.5 | | | | | |
| 50 | 99.2 | 81.7 | 99.1 | 63.6 | 84.1 | | 58.8 | | 49.8 | |
| 60 | 99.2 | 76.6 | 98.0 | 60.0 | 78.4 | 48.0 | 55.8 | | 47.7 | |
| 70 | 99.2 | 72.3 | 91.0 | 56.5 | 72.6 | 45.3 | 52.7 | 33.4 | 45.5 | 29.9 |
| 80 | 99.2 | 68.8 | 84.6 | 53.5 | 67.1 | 43.2 | 49.7 | 32.6 | 43.3 | 28.3 |
| 120 | 85.4 | 59.2 | 66.4 | 44.7 | 53.6 | 36.2 | 38.8 | 27.0 | 34.0 | 23.6 |
| 160 | 68.6 | 51.4 | 54.3 | 39.1 | 43.9 | 33.1 | 33.3 | 23.4 | 29.1 | 20.3 |
| 200 | 60.1 | 46.3 | 46.0 | 35.3 | 37.4 | 29.8 | 28.1 | 20.9 | 24.6 | 18.1 |
| 235 | 53.5 | 44.1 | 41.2 | 33.6 | 33.5 | 28.0 | 25.0 | 19.4 | 21.8 | 16.7 |
| 245 | | | 40.1 | 33.4 | 33.4 | 27.8 | 24.3 | 19.2 | 21.1 | 16.4 |
| 255 | | | | | 33.3 | 27.6 | 23.7 | 18.9 | 20.6 | 16.2 |
| 275 | | | | | | | 22.6 | 18.8 | 19.6 | 16.0 |
| 285 | | | | | | | | | 19.1 | 15.9 |

Load capacity in 1000 lbs with 262 ft main boom

| | Jib length 36 ft | | Jib length 46 ft | | Jib length 56 ft | | Jib length 75 ft | | Jib length 85 ft | |
|-------|------------------|------|------------------|------|------------------|------|------------------|------|------------------|------|
| | 15° | 30° | 15° | 30° | 15° | 30° | 15° | 30° | 15° | 30° |
| 31.35 | 99.2 | | | | | | | | | |
| 40 | 99.2 | 88.2 | 99.2 | | 85.8 | | | | | |
| 50 | 99.2 | 83.2 | 99.2 | 64.4 | 83.3 | | 58.0 | | | |
| 60 | 99.2 | 78.8 | 98.1 | 60.9 | 80.6 | 48.6 | 55.9 | | 47.2 | |
| 80 | 99.2 | 71.0 | 89.0 | 55.5 | 70.6 | 44.1 | 51.1 | 33.1 | 43.1 | 28.8 |
| 100 | 99.2 | 66.4 | 78.1 | 50.9 | 64.6 | 40.6 | 45.6 | 30.4 | 39.4 | 26.3 |
| 140 | 83.5 | 58.2 | 65.0 | 43.6 | 51.9 | 35.1 | 37.1 | 26.2 | 33.4 | 22.6 |
| 180 | 69.2 | 51.5 | 54.5 | 39.1 | 43.8 | 33.0 | 32.9 | 23.1 | 28.6 | 20.0 |
| 220 | 61.9 | 47.0 | 47.2 | 35.8 | 38.2 | 30.0 | 28.4 | 21.0 | 24.7 | 18.0 |
| 270 | 50.3 | 44.0 | 41.0 | 33.6 | 33.4 | 27.9 | 24.6 | 19.2 | 21.3 | 16.5 |
| 280 | | | 40.1 | 33.4 | 33.4 | 27.7 | 24.0 | 19.0 | 20.8 | 16.2 |
| 290 | | | | | 33.2 | 27.6 | 23.5 | 18.9 | 20.3 | 16.1 |
| 310 | | | | | | | 22.5 | 18.8 | 19.5 | 16.0 |
| 320 | | | | | | | | | 19.1 | 16.0 |

Carbody counterweight: 126,100 lbs with 3.9 ft flat track pads
 Rear counterweight: 163,200/229,300/273,400 lbs
 Suspended counterweight: 4,400-264,600 lbs / radius 40-51.8 ft

TLT 14168081 / 0. Above load charts are for reference only. For actual lift duty please refer to load chart in operator's cabin or manual. Otherwise we recommend you to plan your lifting job using Crane Planner 2.0.

Load capacities with fixed jib

Load capacity in 1000 lbs with 302 ft main boom

| | Jib length 36 ft | | Jib length 46 ft | | Jib length 56 ft | | Jib length 75 ft | | Jib length 85 ft | |
|-------|------------------|------|------------------|------|------------------|------|------------------|------|------------------|------|
| | 15° | 30° | 15° | 30° | 15° | 30° | 15° | 30° | 15° | 30° |
| 33.41 | 99.2 | | | | | | | | | |
| 40 | 99.2 | | 99.2 | | | | | | | |
| 50 | 99.2 | 84.4 | 99.2 | 65.0 | 81.2 | | 56.7 | | | |
| 60 | 99.2 | 80.2 | 99.2 | 62.2 | 79.4 | 49.0 | 55.4 | | 46.5 | |
| 80 | 99.2 | 73.6 | 93.6 | 56.6 | 73.6 | 45.1 | 51.7 | 33.4 | 43.5 | 29.0 |
| 120 | 99.2 | 65.5 | 74.4 | 48.8 | 61.0 | 39.0 | 43.2 | 28.9 | 37.8 | 24.9 |
| 160 | 81.9 | 57.8 | 63.9 | 43.1 | 50.8 | 34.5 | 36.0 | 25.6 | 32.5 | 22.0 |
| 200 | 70.0 | 51.7 | 54.8 | 39.1 | 43.8 | 32.9 | 32.7 | 22.9 | 28.3 | 19.8 |
| 240 | 58.6 | 47.7 | 48.2 | 36.1 | 38.6 | 30.3 | 28.8 | 21.0 | 24.9 | 18.1 |
| 280 | 43.9 | 44.4 | 43.2 | 34.1 | 34.8 | 28.5 | 25.8 | 19.7 | 22.4 | 16.9 |
| 305 | 36.7 | 36.9 | 37.5 | 33.5 | 33.4 | 27.8 | 24.4 | 19.1 | 21.0 | 16.3 |
| 325 | | | | | 33.2 | 27.6 | 23.4 | 18.9 | 20.2 | 16.0 |
| 340 | | | | | | | 22.7 | 18.8 | 19.6 | 15.9 |
| 350 | | | | | | | | | 19.3 | 15.9 |

Load capacity in 1000 lbs with 331 ft main boom

| | Jib length 36 ft | | Jib length 46 ft | | Jib length 56 ft | | Jib length 75 ft | | Jib length 85 ft | |
|-------|------------------|------|------------------|------|------------------|------|------------------|------|------------------|------|
| | 15° | 30° | 15° | 30° | 15° | 30° | 15° | 30° | 15° | 30° |
| 34.96 | 99.2 | | | | | | | | | |
| 40 | 99.2 | | 93.9 | | | | | | | |
| 50 | 99.2 | 85.0 | 93.9 | 62.8 | 78.8 | | | | | |
| 60 | 99.2 | 81.2 | 93.9 | 62.3 | 77.4 | 49.5 | 54.2 | | 45.9 | |
| 80 | 99.2 | 75.1 | 93.7 | 57.7 | 73.9 | 45.7 | 51.6 | 33.4 | 43.7 | 29.2 |
| 120 | 99.2 | 66.4 | 77.1 | 50.0 | 63.4 | 40.0 | 44.6 | 29.4 | 38.3 | 25.5 |
| 160 | 85.0 | 58.9 | 66.0 | 44.2 | 52.6 | 35.4 | 37.5 | 26.1 | 33.4 | 22.4 |
| 200 | 72.6 | 53.0 | 56.5 | 39.9 | 45.2 | 33.4 | 33.4 | 23.5 | 29.5 | 20.1 |
| 240 | 56.2 | 48.7 | 49.8 | 36.9 | 40.0 | 31.1 | 30.0 | 21.6 | 26.0 | 18.5 |
| 330 | 28.5 | 28.8 | 29.4 | 29.7 | 30.3 | 27.8 | 24.0 | 19.0 | 20.7 | 16.2 |
| 340 | | | 27.1 | 27.3 | 28.0 | 27.7 | 23.6 | 18.9 | 20.3 | 16.1 |
| 350 | | | | | 25.8 | 26.1 | 23.2 | 18.8 | 20.0 | 16.0 |
| 370 | | | | | | | 22.5 | 18.8 | 19.4 | 15.9 |
| 380 | | | | | | | | | 19.1 | 15.9 |

Load capacity in 1000 lbs with 361 ft main boom

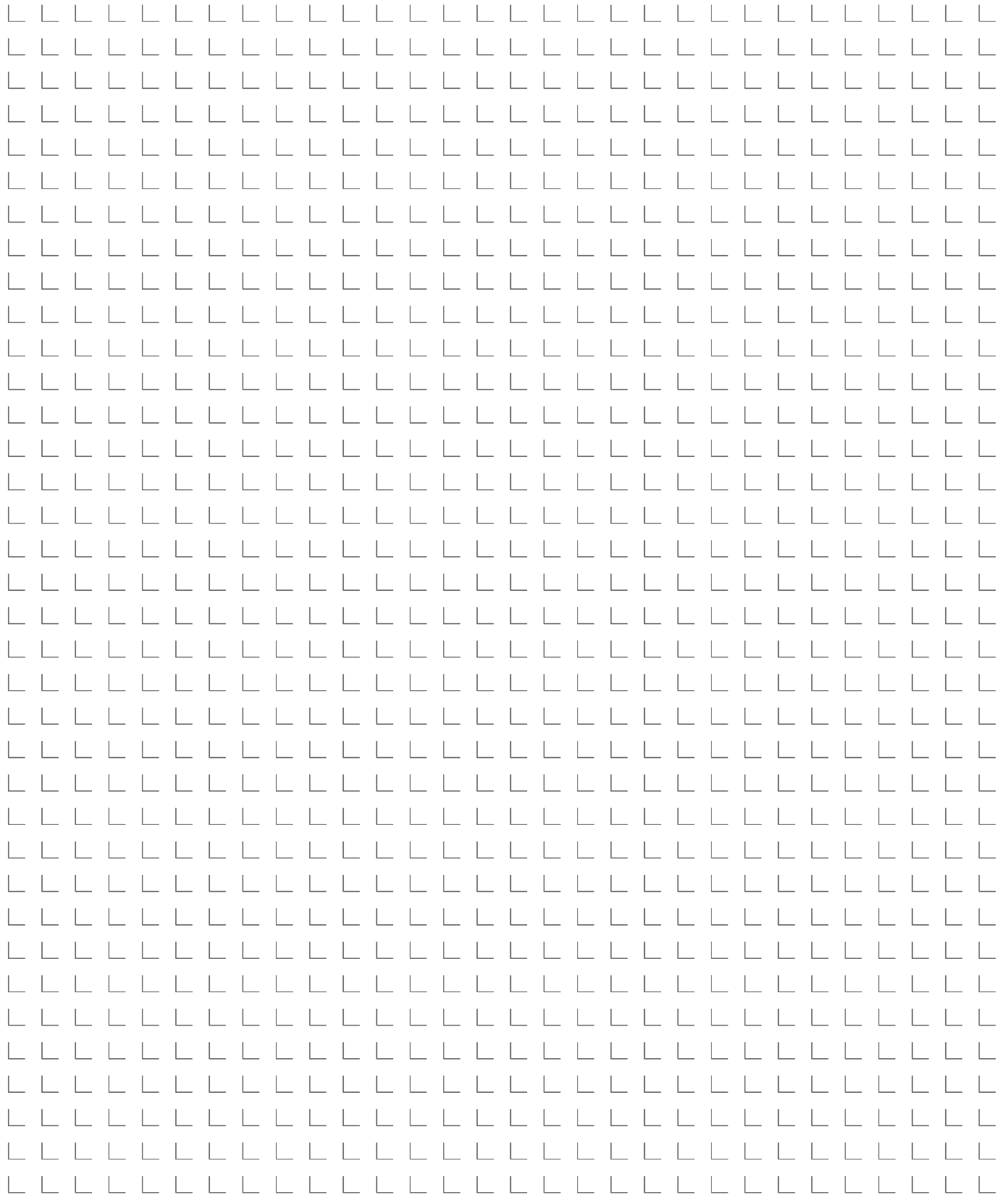
| | Jib length 36 ft | | Jib length 46 ft | | Jib length 56 ft | | Jib length 75 ft | | Jib length 85 ft | |
|------|------------------|------|------------------|------|------------------|------|------------------|------|------------------|------|
| | 15° | 30° | 15° | 30° | 15° | 30° | 15° | 30° | 15° | 30° |
| 36.5 | 96.8 | | | | | | | | | |
| 50 | 96.8 | 82.0 | 87.4 | | 76.0 | | | | | |
| 60 | 96.8 | 81.4 | 87.4 | 62.8 | 74.9 | 49.4 | 52.8 | | 45.1 | |
| 80 | 96.8 | 75.8 | 87.4 | 58.5 | 72.7 | 46.2 | 51.1 | 33.4 | 43.3 | 29.3 |
| 100 | 96.7 | 70.8 | 85.2 | 54.7 | 69.1 | 43.3 | 49.0 | 31.9 | 41.7 | 27.4 |
| 140 | 95.0 | 64.9 | 73.4 | 48.3 | 59.9 | 38.4 | 42.2 | 28.4 | 36.6 | 24.3 |
| 180 | 82.6 | 57.7 | 64.1 | 43.2 | 50.9 | 34.5 | 36.0 | 25.5 | 32.4 | 21.9 |
| 220 | 62.9 | 52.4 | 55.7 | 39.5 | 44.4 | 33.4 | 33.2 | 23.1 | 28.7 | 19.8 |
| 260 | 45.7 | 46.6 | 46.6 | 36.8 | 39.8 | 31.0 | 29.6 | 21.5 | 25.6 | 18.3 |
| 355 | 20.6 | 20.8 | 21.4 | 21.7 | 22.3 | 22.8 | 23.9 | 19.0 | 20.6 | 16.2 |
| 365 | | | 19.4 | 19.7 | 20.3 | 20.7 | 21.9 | 18.9 | 20.3 | 16.0 |
| 375 | | | | | 18.4 | 18.7 | 20.0 | 18.8 | 20.0 | 16.0 |
| 395 | | | | | | | 16.4 | 16.7 | 17.1 | 15.9 |
| 405 | | | | | | | | | 15.4 | 15.7 |

Carbody counterweight: 126,100 lbs with 3.9 ft flat track pads
 Rear counterweight: 163,200/229,300/273,400 lbs
 Suspended counterweight: 4,400-264,600 lbs / radius 40-51.8 ft

TLT 14168081/0. Above load charts are for reference only. For actual lift duty please refer to load chart in operator's cabin or manual. Otherwise we recommend you to plan your lifting job using Crane Planner 2.0.

Notes

26 columns of 30 L-shaped symbols for note-taking.





Download datasheet



Please contact us.

Liebherr-Werk Nenzing GmbH · Dr. Hans Liebherr Str. 1 · 6710 Nenzing, Austria
Phone +43 50809 41-473 · crawler.crane@liebherr.com · www.liebherr.com
facebook.com/LiebherrConstruction

Liebherr USA, Co. · 7075 Bennington Street · Houston, TX 77028-5812
Phone (713) 636-4050 · crawler.cranes.usa@liebherr.com · www.liebherr.com
facebook.com/LiebherrConstruction