

---

# Rethinking mobility.

---

Thanks to the latest technologies, particularly sustainable and economical concrete production is possible with the Mobilmix from Liebherr in an unbeatably short time.

## LIEBHERR

Mobilmix 2.5 – 4.0



---

# Plug and play for the best concrete

---

## The Mobilmix series – facts and figures

The latest generation of concrete batching plants from Liebherr is revolutionising the production of concrete by enabling economical production. The modular design of this generation offers a wide range of variants that can be flexibly customised to the needs of customers. This flexibility enables the quick and uncomplicated realisation of both stationary and mobile concrete batching plants.

An important innovation of the new Mobilmix is the smoothing of power peaks by up to 64 %. This is achieved through the use of LiPerformance process optimisation. This not only significantly reduces connection costs to the power grid, but also the operating costs for energy. As a positive side effect, wear is noticeably reduced thanks to the smooth starting and stopping of the drives.

The precise dosing of cement is another outstanding feature of Liebherr's new concrete batching

plants. This allows more efficient use of resources, because up to 8 kg (17.5 lb) of cement can be saved in a typical formula with 300 kg (661 lb) of cement per cubic metre of concrete.

Increased output of up to 20 % is possible with the Liebherr control system and LiPerformance process optimisation. Optimised process times enable shorter mixing times.

Cleanliness and convenience reach a whole new level with the new cleaning solutions from Liebherr. With the LiClean cleaning solutions, various options are available for efficient plant cleaning – saving up to 70 % water and 80 % time. They also allow cleaning work to be carried out comfortably in large working areas and to the highest safety standards.

Assembly of the batching plant is extremely quick and cost-effective thanks to its folding concept and wiring carried out in the factory. No concrete foundation work is

required for the Mobilmix. All that is needed is a level, load-bearing surface.

Furthermore, the new plant concept offers a wide range of customised and extensive equipment options that can further increase convenience and efficiency. A large working area over the individual operational levels makes daily work much easier.

# 5x

## faster cleaning

With LiClean, cleaning times are significantly reduced and cleaning is five times faster. LiClean solutions include e.g. cleaning the mixer system and the feeding hoppers of the truck mixers.

1 / 3

With the intelligent mixing process control, the speeds of the mixing system can be individually adjusted according to the mixing progress. The mixing time can be reduced by up to 30 %.

LiPerformance process optimisation in conjunction with the Liebherr control system enables increased output rates of 10 to

# 20 %

compared to conventional\* batching plants with the same mixer size (depending on the plant configuration).

# 9 days

until concrete production is possible under the right conditions! The new Mobilmix can be positioned quickly and easily thanks to its "folding concept". What's special about it: The entire plant stands on steel foundations and is already pre-wired in the factory – forming the basis for concrete production after nine days.

# +/- 0,35 %

## accuracy of cement

up to 8 kg (17.5 lb) of cement can be saved in a typical formula with 300 kg (661 lb) of cement per cubic metre of concrete.

\*conventional batching plants without LiPerformance process optimisation

# More precise. Faster. Genuinely sustainable.

## 3 Weighing platform

The weighing platform offers a high degree of flexibility and adaptability. It enables the integration of different scales, which can be comfortably tested for accuracy using checkweighing equipment. Optional ice weigher and microsilica scale can be integrated to satisfy special requirements for the concrete. The optional steel fibre dosing and the optional chain hoist are also located on the weighing platform.

## 2 Skip

We offer our vertical skip hoist for an optimum material flow. Thanks to the LiPerformance process optimisation and the parallel running surfaces, wear is not only significantly minimised, but also focused on readily replaceable plastic rollers.

## 1 Aggregate storage

Our mobile in-line silo offers a storage capacity of 140 m<sup>3</sup> (183 yd<sup>3</sup>), optionally even as a tower silo with an impressive capacity of 600 m<sup>3</sup> (785 yd<sup>3</sup>). The mobile in-line silo with hinged chamber walls and steel foundations consists of the upper and lower sections, which can be set up quickly and easily with two crane lifts. Once the chambers have been folded open, the mobile in-line silo can be assembled in just a few hours.





## 4 Cement silos

Depending on the configuration, the batching plant can be equipped with up to six cement silos. The silos are available in a variety of sizes and capacities of up to 120 tonnes. They are equipped with filters, sensors and an injection device to ensure an optimum work flow.

## 5 Mixer module

Our mixer systems, the twin-shaft mixers and ring-pan mixers, are the centrepiece of the batching plant. They are optimised for maximum output and mixing quality in conjunction with LiPerformance process optimisation. Furthermore, the LiClean high pressure cleaning system ensures a long system service life and cleanliness. In addition, ergonomic and safe working is guaranteed thanks to the generous workspace.

## 6 Technology and control container

The control system is the centre of the batching plant. It monitors, controls and coordinates all processes to ensure precise and economical concrete production. The system consists of the highly developed Litronic-MPS 3 control system, which enables comprehensive automation of the plant. When used in conjunction with LiPerformance process optimisation, increased output rates of 10-20 % are possible, depending on the plant configuration.

## 7 Concrete discharge

Our concrete delivery hopper can be equipped with various options, to ensure clean and precise concrete delivery. A truck mixer hopper cleaning system with drip guard (optional) prevents soiling, e.g. of the driver's cab or floor. Swivelling hoppers also enable delivery into trucks or trailers.

# Unbeatable mobility

---

In the development of the new Mobilmix series from Liebherr, emphasis was placed on rapid assembly, a high degree of flexibility and sustainable concrete production. The Mobilmix is a genuine mobile miracle that can produce sustainable concrete in just nine days under the right conditions.



## The steel foundation

Absolutely no concrete work is required for our Liebherr Mobilmix. Compacted soil of 300 kN/m<sup>2</sup> is the only prerequisite for producing concrete after just nine days.



### The basic unit

The innovative folding concept, combined with wiring carried out in the factory, enables assembly in just nine days if the right conditions are met. Thanks to the design with a steel foundation, lateral supports and anti-slip plates, no concrete work is required.



### The in-line silo

The mobile in-line silo with hinged chamber walls and steel foundations consists of the upper and lower sections, which are quickly and easily mounted with two crane lifts. Once the chambers have been folded open, the in-line silo can be assembled in a matter of hours.



### The cement part

The mobile cement silos are simply mounted on the steel foundations. The cement screws are transported "in one piece" and mounted directly and simply to the inlet connection to the cement weigher on the construction site. This means that the complete cement part can be erected within a few hours.



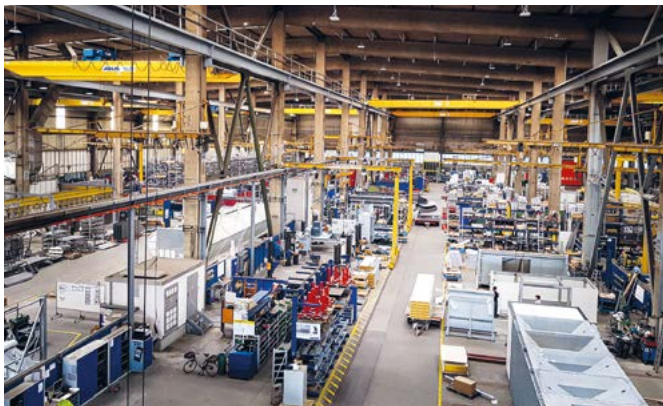
**Mobilmix double plant in Dresden (Germany)**

The innovative double plant delivers up to 250 m<sup>3</sup> (327 yd<sup>3</sup>) concrete per hour. Thanks to modern drive technologies, it significantly saves energy and cement. In this case, the double batching plant was ready for operation within three weeks of delivery. The entire process was completed to the full satisfaction of the customer.



# Technology that makes the difference.

The new Mobilmix generation impresses with state-of-the-art technology: Thanks to unbeatable flexibility in the technical equipment and LiPerformance process optimisation, concrete production is also securely positioned for future challenges at any location.



## Rapid delivery time

The Mobilmix can be delivered within a few weeks thanks to prefabricated modules, allowing efficient project planning.



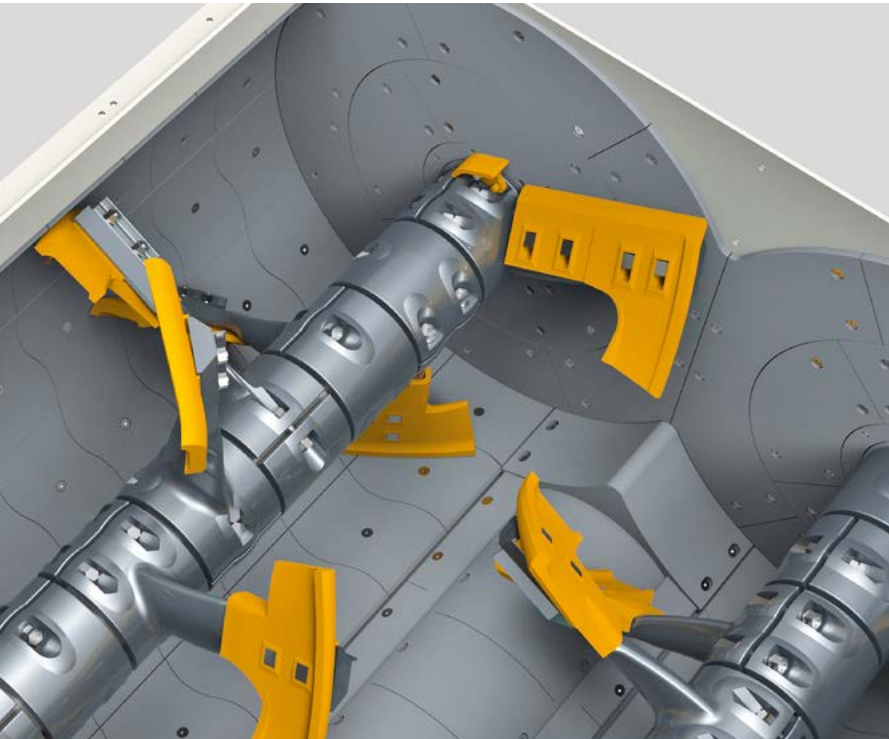
## Economical transport

The Mobilmix transport units are optimised for road transport. As such, the plant can be moved quickly and economically from one construction site to the next.



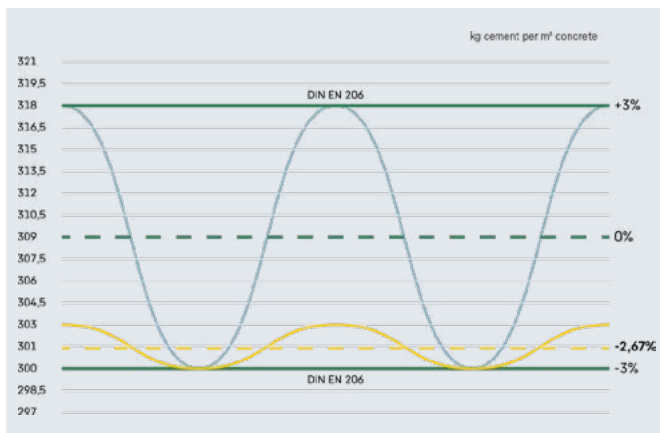
## Quick assembly

The Mobilmix (on steel foundations) with the innovative folding concept and pre-wiring to the integrated technology container can be assembled on pre-compact soil (300 kN/m<sup>2</sup>) in nine days if the right conditions are met.



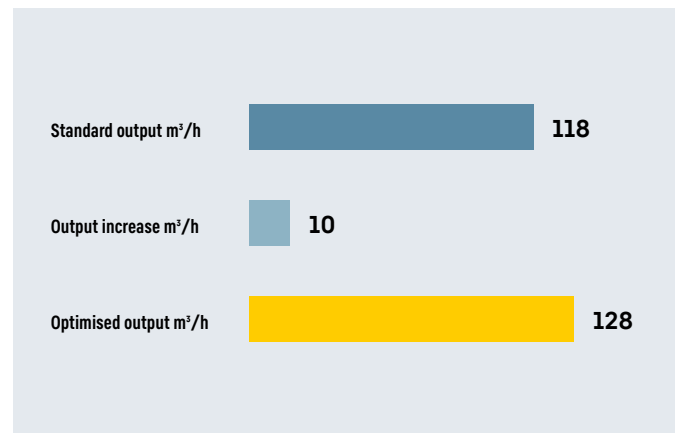
## Intelligent mixing process

With the latest generation of Liebherr twin-shaft mixers and ring-pan mixers, the speeds of the drives can be adjusted individually and according to the progress of the mixing process. This means that mixing times can be reduced by up to 30 % for highly demanding formulas for state-of-the-art concretes.



## Massive cement savings

Thanks to a dosing accuracy of +/- 1 kg (+/- 2.2 lb) with the new LiPerformance process optimisation, up to 8 kg (17.5 lb) of cement can be saved with a standard formula with a minimum cement content of 300 kg (661 lb). With concrete production of 50,000 m<sup>3</sup> (65,400 yd<sup>3</sup>) per year, at least € 50,000 can be saved thanks to high-precision dosing.



## 10 to 20 % higher output

With the latest LiPerformance process optimisation from Liebherr, all processes are optimally coordinated, resulting in 10 to 20 % higher output rates compared to standard mixing systems of the same size class.



## Genuine energy efficiency

No more power or current peaks, almost no more costs incurred due to reactive current compensation and gentle operation due to the smooth start-up of all drives. Thanks to LiPerformance process optimisation the Mobilmix is equipped for a sustainable and competitive future.



## Generous space conditions

All accessible areas of the entire batching plant are generously sized and offer sufficient space and easy access for maintenance and cleaning. Tools, spare parts and equipment can be stored at any time without compromising the working areas. The plant satisfies all applicable standards to ensure ergonomics and safety.

# Liebherr-Mischtechnik GmbH

**Established:**  
1954

**Products:**  
Mobile and stationary batching plants  
Truck mixers and conveyor belts for truck mixers  
Control and measuring equipment  
Residual concrete recycling systems  
Concrete pumps

**Did you know?** To ensure unbeatable quality, the site has its own modern test technology centre with a concrete laboratory. All new products are tested and analysed here. Mixing tests with different materials or formulas are carried out on behalf of customers to satisfy the various requirements.



**Bad Schussenried**

# The new Mobilmix at a glance

## Mobilmix

Type	2.5	3.0 <sup>New</sup>	3.5	4.0 <sup>New</sup>
Theoretical output rate in fresh concrete <sup>1</sup>	131 m <sup>3</sup> /h (171 yd <sup>3</sup> /h)	150 m <sup>3</sup> /h (196 yd <sup>3</sup> /h)	169* / 174** m <sup>3</sup> /h (221* / 227** yd <sup>3</sup> /h)	188* / 193** m <sup>3</sup> /h (245* / 252** yd <sup>3</sup> /h)
Practical output rate in compacted fresh concrete <sup>2</sup>	105 m <sup>3</sup> /h (137 yd <sup>3</sup> /h)	120 m <sup>3</sup> /h (157 yd <sup>3</sup> /h)	135* / 139** m <sup>3</sup> /h (176* / 181** yd <sup>3</sup> /h)	150* / 154** m <sup>3</sup> /h (196* / 201** yd <sup>3</sup> /h)
Practical output rate in compacted fresh concrete <sup>2</sup> with LiPerformance***	115 m <sup>3</sup> /h (150 yd <sup>3</sup> /h)	132 m <sup>3</sup> /h (172 yd <sup>3</sup> /h)	148* / 152** m <sup>3</sup> /h (193* / 198** yd <sup>3</sup> /h)	165* / 170** m <sup>3</sup> /h (215* / 222** yd <sup>3</sup> /h)
Mixer size	2.5 m <sup>3</sup> (3.3 yd <sup>3</sup> )	3.0 m <sup>3</sup> (4.0 yd <sup>3</sup> )	3.5 m <sup>3</sup> (4.5 yd <sup>3</sup> )	4.0 m <sup>3</sup> (5.2 yd <sup>3</sup> )
Ring-pan mixer	✓	-	-	-
Twin-shaft mixer	✓	✓	✓	✓
Max. storage volume of aggregates in mobile in-line silo <sup>3</sup>	140 - 500 m <sup>3</sup> (183 - 654 yd <sup>3</sup> )	140 - 500 m <sup>3</sup> (183 - 654 yd <sup>3</sup> )	140 - 500 m <sup>3</sup> (183 - 654 yd <sup>3</sup> )	140 - 500 m <sup>3</sup> (183 - 654 yd <sup>3</sup> )
Max. storage volume of aggregates in tower silo <sup>4</sup>	400 - 600 m <sup>3</sup> (523 - 785 yd <sup>3</sup> )	400 - 600 m <sup>3</sup> (523 - 785 yd <sup>3</sup> )	400 - 600 m <sup>3</sup> (523 - 785 yd <sup>3</sup> )	400 - 600 m <sup>3</sup> (523 - 785 yd <sup>3</sup> )
Max. number of cement silos	6	6	6	6
Vertical skip hoist	✓	✓	✓	✓
Steel foundations	✓	✓	✓	✓
Litronic-MPS 3 control system	✓	✓	✓	✓

<sup>1</sup> Mixing time 30 sec, compression ratio = 1.25

<sup>3</sup> 4-6 chambers

\* Truck mixer filling

\*\*\* 10-20 % higher output depending on plant configuration only possible with Liebherr Litronic-MPS 3 control system

<sup>2</sup> Mixing time 30 sec

<sup>4</sup> 4-8 chambers

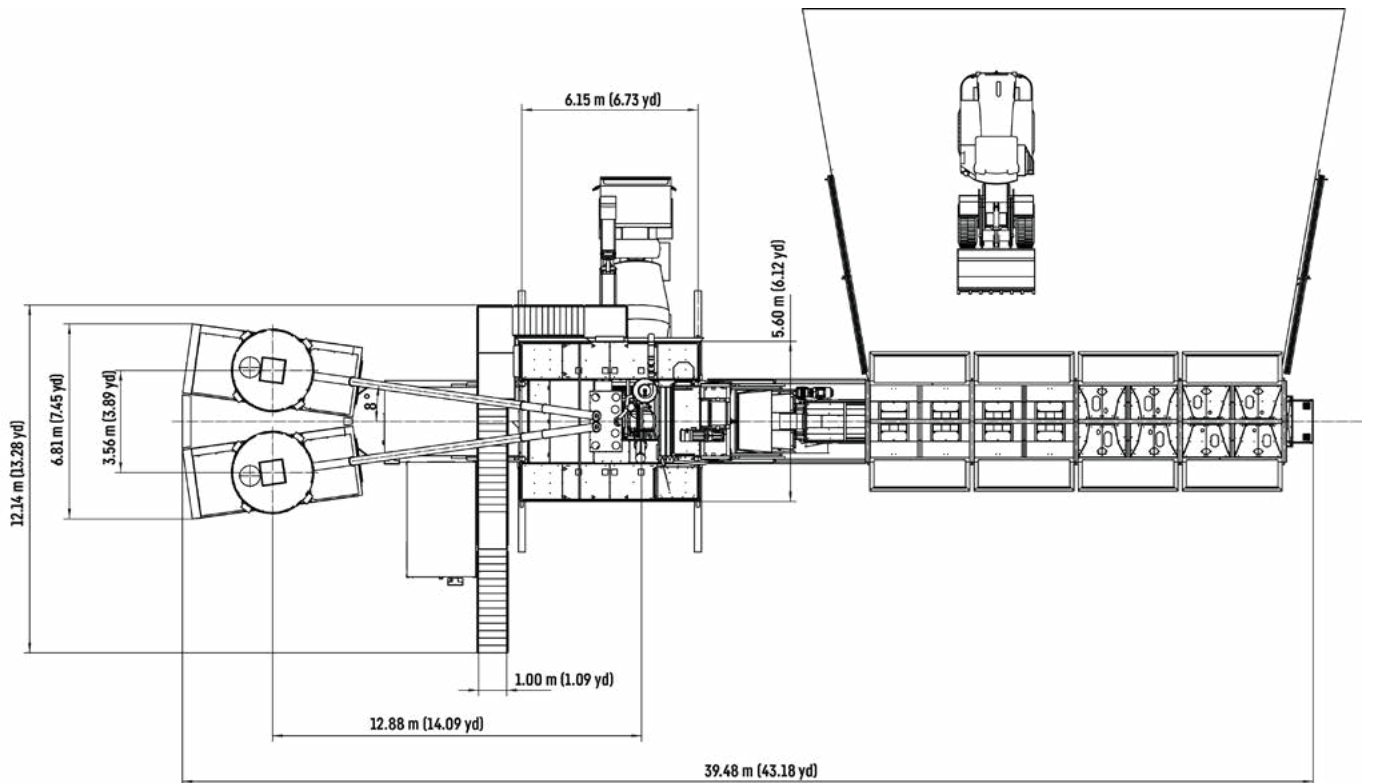
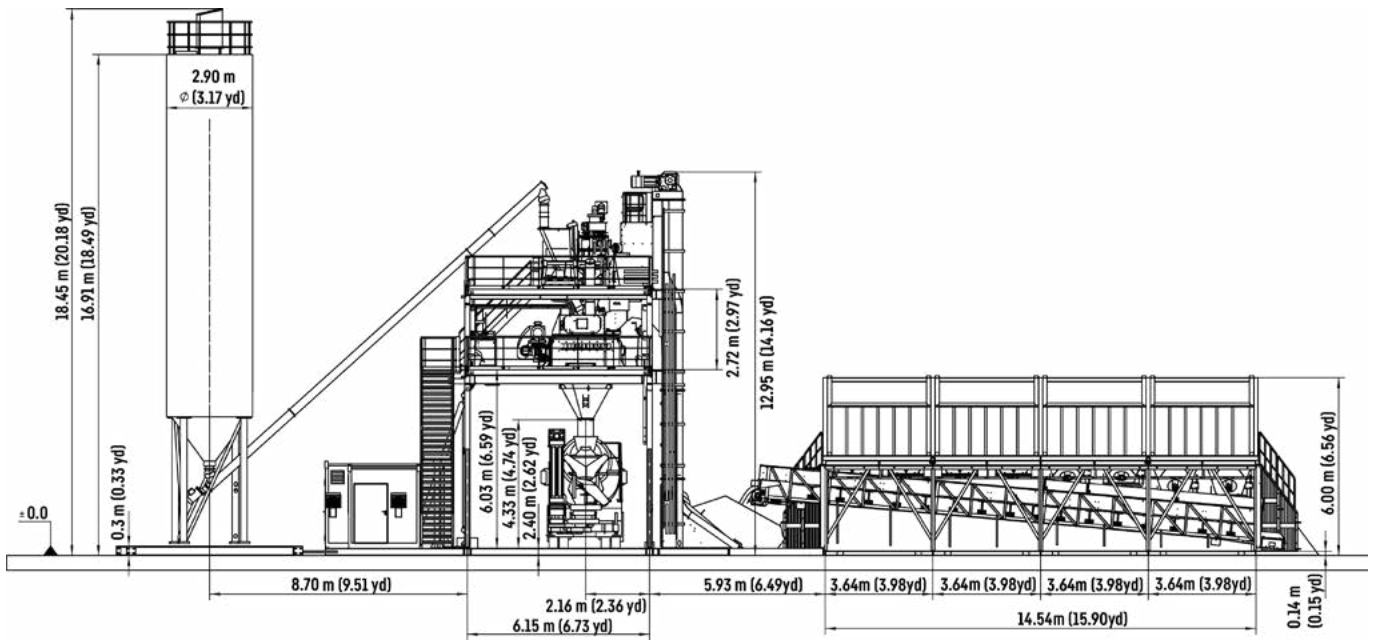
\*\* Truck filling

## Equipment

	Standard	Optional
LiPerformance process optimisation with Liebherr control system	✓	
Liebherr Litronic-MPS 3 control	✓	
Liebherr frequency converters for main drives	✓	
Microsilica scale, ice weigher		✓
LiClean mixer high-pressure cleaning system		✓
LiClean "creep speed" cleaning operation		✓
LiClean truck mixer feeding hopper cleaning		✓
Chain hoist with material hatches		✓
Steel fibre dosing		✓
Slewing hopper, drip protection for concrete discharge*		✓
Winter cladding		✓
Heating, cooling		✓

<sup>1</sup> More on request

\* For truck loading or for collecting the cleaning water



Even more options and benefits

# **The equipment options**

The new Mobilmix allows a wide range of equipment options. All versions focus on maximum safety and unbeatable ease of use.



## **Litronic-MPS 3 control**

The Liebherr control system offers a user-friendly interface for data input and process control. When used in conjunction with the new LiPerformance process optimisation, it enables a 10-20 % higher output.



## **Steel fibre dosing**

The arrangement of the optional steel fibre dosing on the weighing platform ensures reliable and convenient production of steel fibre concretes.



## Winter cladding

The cladding can be fitted in no time. Once the platforms for the mixer and weighing platform have been assembled, the panelling half-shells are fitted and bolted in place. The ISO cladding is designed with a wall thickness of 60 mm.



## Chain hoist and hatches

Optional chain hoist and hatches for lifting heavy loads of up to 2,000 kg (4,409 lb) on Euro pallets (e.g. steel fibres, spare parts, tools).



## Checkweighing equipment

Comfortable and safe testing of the scale function thanks to pneumatically operated checkweighing equipment.



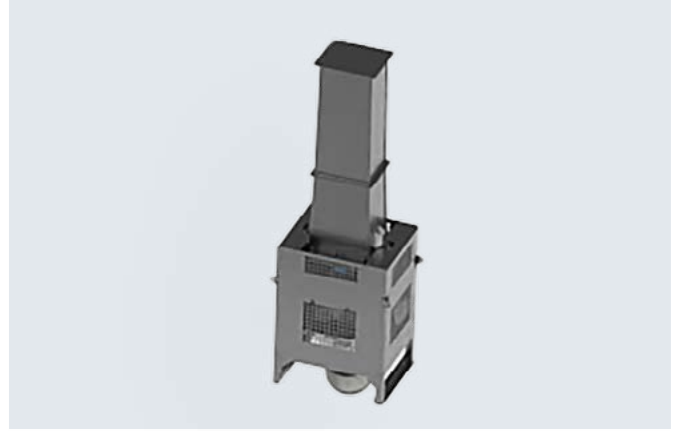
## Additional connections

Extra pneumatic and water connections in all working areas (truck mixer area, mixer and weighing platform) for convenient working.



## Heating

Heating the batching plant and in-line silo enables reliable concrete production in cold regions and during the winter months.



## Ice weigher

In hot regions, the ice weigher enables the production of cooled concrete.



## Drip protection

Our pneumatically operated drip guard prevents concrete from escaping in an uncontrolled manner and dripping onto the truck driver's cab or the floor.



## Frequency converters

LiPerformance process optimisation enables gentle operation, efficient energy use and up to 20 % higher output.



# LiClean cleaning solutions

Modern cleaning systems guarantee quick and convenient concrete production. Our LiClean cleaning solutions are an efficient and environmentally friendly way to keep the plant in top condition.



## LiClean high pressure cleaning

Our LiClean mixer high-pressure cleaning system cleans with the 3D high pressure cleaning heads and 100 bar pressure in the fastest possible time with minimal water consumption. The hand lance can be used during automatic cleaning operation.



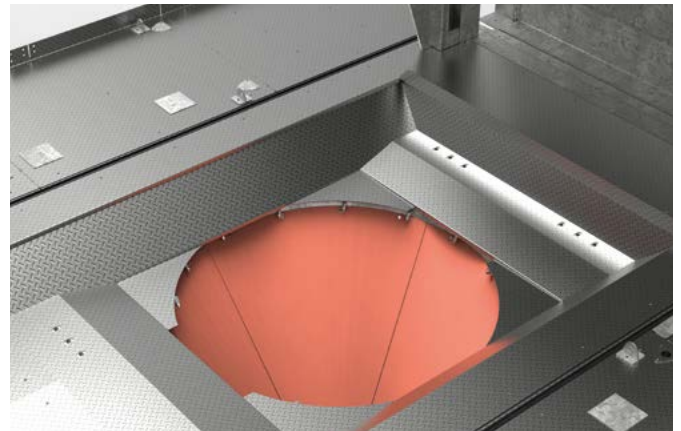
## Creep speed

The "creep speed" cleaning mode makes it easy to clean the inside of the mixer. The mixer can be rotated by one rotation per minute using the two-hand local control when the mixer cover is open.



## Feeding hopper cleaning

The LiClean cleaning system for the truck mixer feeding hopper saves the driver climbing up to the platform. The quantity of cleaning water is taken into account by the control unit in the formula.



## Collecting hopper cleaning

A ring line equipped with cleaning nozzles ensures quick and easy cleaning of the collecting hopper.

# All set for the future.

---

Get in touch with us and discover the advantages of the new Mobilmix from Liebherr. We offer you a customised solution for your projects and support you in achieving your goals.





# We are here for you!

Personal. Capable. Reliable.



Concrete pumps



Mixing plants



Truck mixer



Conveyor belts



Measuring technology



Mixing systems



Concrete recycling system

## Your powerful partner.

- Delivery and instruction by experienced service technicians
- Worldwide service network with over 90 service centres
- Technical support worldwide
- Fast availability of spare parts
- Professional maintenance and services

Get your  
contact



Liebherr-Mischtechnik GmbH • Postfach 145 • D-88427 Bad Schussenried  
+49 7583 949-0 • [www.liebherr.com](http://www.liebherr.com) • E-mail: [info.lmt@liebherr.com](mailto:info.lmt@liebherr.com)

Subject to changes.  
Printed in Germany by Lacher LMT-8203 123 05\_02.25\_en