

2024 Edition

---

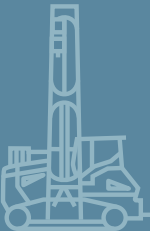
# The earthmoving program

---

[www.liebherr.com](http://www.liebherr.com)

# LIEBHERR

Earthmoving



# Contents

---

The name Liebherr stands not only for products and services. It has also become synonymous for ideas and innovations. In the earthmoving sector, Liebherr develops and manufactures an extensive range of hydraulic excavators, duty cycle crawler cranes, crawler tractors and crawler loaders, as well as wheel loaders and articulated dump trucks. All these products are equipped with state-of-the-art technology and are used successfully worldwide. In view of the high quality standards that Liebherr demands of its products, critical assemblies are manufactured in-house. The entire suite of drive and control technology, including the diesel engines, hydraulics and gearboxes, are developed and manufactured by Liebherr. The company's wide range of products and services is constantly being expanded and improved with great intensity, further cementing Liebherr's position as a global market leader – for customers and business partners all over the world. If you require further information about these products or their availability in your country, please contact the relevant Liebherr companies, our sales partners or visit us on our website at [www.liebherr.com](http://www.liebherr.com).



Here you find all earthmoving brochures available to download directly.

## **WARNING**

This product can expose you to chemicals including lead and lead compounds, which are known to the State of California to cause cancer and birth defects or other reproductive harm.  
For more information go to [www.P65warnings.ca.gov](http://www.P65warnings.ca.gov).

## **WARNING**

Breathing diesel engine exhaust exposes you to chemicals known to the State of California to cause cancer and birth defects or other reproductive harm.

- Always start and operate the engine in a well-ventilated area.
- If in an enclosed area, vent the exhaust to the outside.
- Do not modify or tamper with exhaust system.
- Do not idle the engine except as necessary.

For more information go to [www.P65warnings.ca.gov/diesel](http://www.P65warnings.ca.gov/diesel).

<b>4</b>	<b>Wheeled excavators</b>	<b>38</b>	<b>Crawler tractors</b>
<b>6</b>	Compact wheeled excavators	<b>41</b>	Assistance systems
<b>7</b>	Standard wheeled excavators	<b>42</b>	<b>Crawler loaders</b>
<b>8</b>	HeavyLift wheeled excavator	<b>46</b>	<b>Pipelayers</b>
<b>9</b>	Machines for selected markets	<b>48</b>	<b>Duty cycle crawler cranes</b>
<b>10</b>	<b>Railroad excavators</b>	<b>50</b>	<b>Deep foundation machines</b>
<b>12</b>	<b>Crawler excavators</b>	<b>52</b>	Drilling rigs
<b>14</b>	Compact crawler excavators	<b>53</b>	Piling and drilling rigs
<b>15</b>	Standard crawler excavators	<b>54</b>	Piling rigs
<b>16</b>	Large crawler excavators	<b>55</b>	Assistance systems
<b>17</b>	Demolition excavators	<b>56</b>	<b>Quick coupling systems and attachments</b>
<b>18</b>	Tunnel excavators	<b>58</b>	Quick coupling systems
<b>19</b>	Machines for selected markets	<b>59</b>	Attachments for hydraulic excavators
<b>20</b>	<b>Mining excavators</b>	<b>60</b>	<b>Service</b>
<b>22</b>	<b>Articulated dump truck</b>	<b>62</b>	Our solutions for your satisfaction
<b>25</b>	Assistance systems	<b>63</b>	A selection of our services for you
<b>26</b>	<b>Mining trucks</b>		
<b>28</b>	<b>Wheel loaders</b>		
<b>30</b>	Medium-sized wheel loaders		
<b>32</b>	XPower® wheel loaders		
<b>34</b>	Machines for selected markets		
<b>36</b>	Assistance systems		

# Wheeled excavators

---





## Wheeled excavators

# Compact wheeled excavators

Power and speed combined with compact dimensions – that’s what Liebherr’s compact wheeled excavators deliver on construction sites around the world. They guarantee maximum performance even in tight spaces, such as on inner-city construction sites, in traffic route construction, in municipal applications or in gardening and landscaping.

- High digging force despite a short tail radius
- Excellent maneuverability on construction sites with confined spaces
- Spacious and modern operator’s cabs offer plenty of space and comfort
- The swivel bearing on the A 910 Compact and A 912 Compact enables parallel and precise working
- Powerful engines ensure high performance and excellent mileage with low fuel consumption
- A large selection of attachments and quick coupler systems in different configuration levels guarantees efficiency, productivity and flexibility
- Service-oriented machine design and fast spare parts service

	A 910 Compact Litronic	A 912 Compact Litronic	A 913 Compact Litronic	A 914 Compact Litronic	A 916 Compact Litronic	A 918 Compact Litronic
Generation	6	6	6	6	6	6
Operating weight	lb 26,700-28,900	28,700-31,300	30,600-35,300	33,500-38,600	35,300-40,300	38,600-43,200
Engine output (SAE J1349) HP / kW	114 / 85	121 / 90	127 / 95	141 / 105	148 / 110	154 / 115
Tail radius	ft in 5'6"	5'6"	5'7"	5'9"	5'11"	6'1"
Bucket capacity	yd <sup>3</sup> 0.20-0.63	0.20-0.63	0.22-1.14	0.22-1.14	0.22-1.14	0.22-1.37



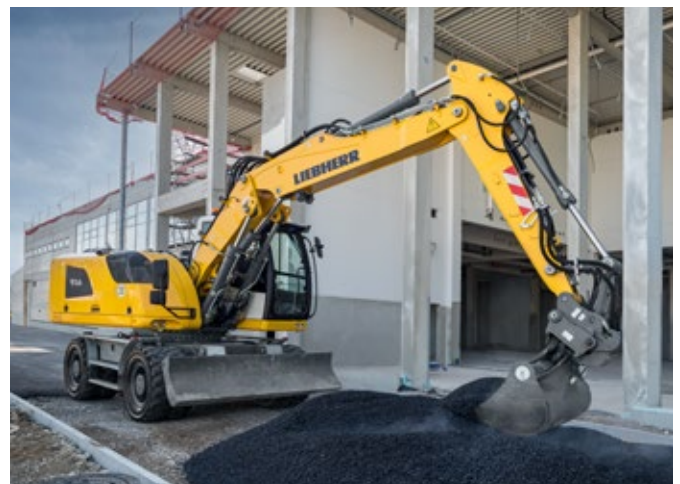
## Wheeled excavators

# Standard wheeled excavators

Whether for classic earthmoving, traffic route construction, channel or pipeline work – thanks to its enormous and consistently high digging performance, our standard wheeled excavator is an absolute top performer on every construction site. It combines maximum efficiency with low fuel consumption and the highest quality.

- Large digging capacity, large loads and fast working cycles guarantee maximum productivity
- Secure standing and stability thanks to various undercarriage designs with welded supports
- The exceptional sensitivity of the hydraulic system enables precise work
- Ergonomically designed operator's work station for healthy, focused and productive work
- The powerful Liebherr diesel engine with low fuel consumption protects the environment and its resources
- The use of a Liebherr quick coupler system increases efficiency and productivity
- Large range of attachments and optional equipment
- Central maintenance points – accessible from the ground and easy to reach

	A 914 Litronic	A 916 Litronic	A 918 Litronic	A 920 Litronic	A 924 Litronic
Generation	6	6	6	6	6
Operating weight	lb 32,800-38,800	36,200-41,200	38,800-44,300	40,300-48,300	47,400-58,400
Engine output (SAE J1349) HP / kW	141 / 105	154 / 115	161 / 120	173 / 129	188 / 140
Bucket capacity	yd <sup>3</sup> 0.22-1.14	0.22-1.37	0.22-1.37	0.72-1.57	0.72-2.16



## Wheeled excavators

# HeavyLift wheeled excavator

Above-average performance, high efficiency, extraordinarily large loads, the HeavyLift wheeled excavator is designed for tough earthmoving operations or for channel and pipeline construction. It impresses with its enormous digging power and, thanks to its high load-bearing capacity and reinforced equipment, it can reliably handle the heaviest loads.

- High breakout forces for permanently high digging performance even in hard soils
- High-strength sheet steel – designed for the toughest requirements – guarantees high torsional stiffness
- Ergonomic and clearly arranged work station for maximum performance
- Maximum stability for increased performance and larger attachments
- Powerful Liebherr diesel engine with low fuel consumption for maximum efficiency
- Equipped with a Liebherr quick coupler system – attachments can be changed efficiently and safely
- The service-oriented machine design guarantees short servicing times, thus minimizing maintenance costs

		A 924 HeavyLift Litronic
Generation		6
Operating weight	lb	58,900-60,600
Engine output (SAE J1349)	HP / kW	215 / 160
Bucket capacity	yd <sup>3</sup>	0.98-2.22





## Wheeled excavators

# Machines for selected markets

These wheeled excavators are designed for the special requirements in markets outside Europe, North America and Australia. With their powerful and robust engines that are specifically designed for construction machinery, their solid construction and key components produced in-house, they meet the highest quality standards and are perfectly tailored for economical use in these countries.

- Road-legal and ideally suited for construction sites which involve a lot of driving
- Balanced weight distribution and high ballast weight for fast, fluid and safe working
- Outrigger and blade support ensures optimum stability with high payloads
- Powerful, reliable and yet economical diesel engine
- The machine concept enables high digging and breakout forces with simultaneous combined and flowing movements
- Ergonomically designed operator's work station for maximum comfort
- Consolidated lubrication points simplify manual lubrication and reduce maintenance time

		A 916 Litronic	A 918 Litronic	A 920 Litronic
Generation		5	5	5
Operating weight	lb	38,100	41,700	45,600
Engine output (SAE J1349)	HP / kW	154 / 115	161 / 120	173 / 129
Bucket capacity	yd <sup>3</sup>	0.39-1.37	0.42-1.37	0.72-1.57



# Railroad excavators

---



Liebherr has been developing rail-road excavators since 1967 and – as an OEM manufacturer – is the world market leader in this field. These machines are adapted to country-specific specifications (e.g. track width) and therefore comply with local conditions and safety regulations. Our rail excavators can be used either on the road or on railway tracks.

- Robust and powerful construction machine engine for high working speeds and continuous use under full load
- Different undercarriage variants, track widths and track wheels enable worldwide use on railway tracks
- High-quality, optimally matched Liebherr hydraulic components allow exceptionally precise movements
- Spacious double cab with roll-over protection (ROPS) as standard for comfortable, focused and productive work
- Numerous safety systems such as load torque, height and slew limitation or the virtual wall guarantee maximum safety in every application
- Variable-displacement double pump with independent regulating circuits for high driving and working performance
- Two high-pressure circuits for operating special attachments
- Maximum efficiency and productivity can be achieved by using the fully automatic Solidlink quick coupler system
- A large selection of attachments and optional equipment makes this machine perfect for a wide range of applications
- Easily accessible components, a service-oriented machine design and long replacement intervals for the high-quality hydraulic oils ensure low maintenance costs and short downtimes

		A 922 Rail Litronic	A 924 Rail Litronic
Generation		6	6
Operating weight	lb	45,000-51,600	48,100-55,100
Engine output (SAE J1349)	HP / kW	161 / 120	161 / 120
Bucket capacity	yd <sup>3</sup>	0.31-1.24	0.31-1.24



# Crawler excavators

---





## Crawler excavators

# Compact crawler excavators

Our “Compact” crawler excavator series combines the versatility and performance of standard crawler excavators with the advantages of short-tail excavators. With its compact machine design, this crawler excavator is perfect for confined work areas and urban construction sites.

- Short tail radius for construction sites with tight spaces
- Diverse range of equipment enables a wide range of applications
- Good transportability
- Excellent visibility into the work area
- Dozer blade / stabilizer blade for maximum stability and productivity
- Extremely user-friendly
- Central maintenance points are accessible from the ground

	R 914 Compact Litronic	R 920 Compact Litronic	R 926 Compact Litronic	R 936 Compact Litronic
Generation	6	6	6	6
Operating weight	lb 32,520-37,040	41,670-46,960	56,330-61,950	74,410-82,010
Engine output (SAE J1349)	HP / kW 121 / 90	148 / 110	173 / 129	255 / 190
Tail radius	ft in 5'1"	6'1"	5'7"	6'6"



## Crawler excavators

# Standard crawler excavators

Low fuel consumption and enormously high performance characterize our standard crawler excavators and guarantee outstanding economic efficiency. In addition, these machines stand for high reliability and maximum comfort. These powerful, productive and efficient crawler excavators are used in mass earthmoving, material processing and quarrying.

- 8<sup>th</sup>-generation design
- Construction machinery engine that complies with the respective standards
- Excellent visibility into the work area
- Uppercarriage platform provides safe access
- Large selection of LED lighting
- High digging and breakout forces

	R 918 Litronic	R 922 Litronic	R 924 Litronic	R 926 Litronic	R 928 Litronic
Generation	6	8	8	8	8
Operating weight lb	43,320-47,730	49,490-54,120	52,030-57,430	58,310-63,820	63,600-67,020
Engine output (SAE J1349) HP/kW	161/120	161/120	173/129	201/150	201/150

	R 930 Litronic	R 934 Litronic	R 938 Litronic	R 945 Litronic
Generation	8	8	8	8
Operating weight lb	66,470-83,220	76,280-84,660	82,010-91,270	90,830-106,370
Engine output (SAE J1349) HP/kW	241/180	268/200	295/220	295/220



## Crawler excavators

# Large crawler excavators

Liebherr's large excavators have been specially developed for tough and demanding applications and ensure consistently high performance in the mining and mass earthmoving industries. The versatile and modular Liebherr excavators provide the operator with the ideal conditions for low-fatigue and effective working.

- Reinforced undercarriages and equipment
- High safety thanks to cab safety guard
- Large selection of LED lighting
- High digging and breakout forces
- Large portfolio of backhoe buckets and shovel equipment
- Cab elevation for optimal visibility

	R 956 Litronic	R 960 SME Litronic	R 972 Litronic	R 978 SME Litronic	R 992 Litronic
Generation	6	6	6	6	6
Operating weight lb	121,480-133,170	132,280-135,920	150,910-170,970	172,730-178,570	189,160-212,750
Engine output (SAE J1349) HP/kW	335/250	335/250	443/330	443/330	563/420

	R 992-E Litronic	R 998 SME Litronic	R 998 SME-E Litronic
Generation	6	6	6
Operating weight lb	199,630-214,070	215,390-223,770	221,450-229,720
Engine output (SAE J1349) HP/kW	536/400	563/420	536/400





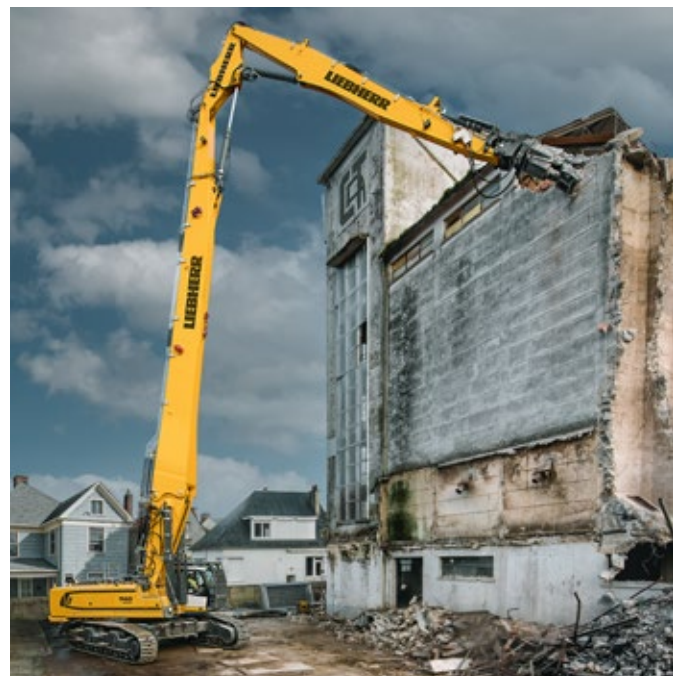
## Crawler excavators

# Demolition excavators

Liebherr demolition excavators combine a variety of outstanding technical developments with durable components and innovative solutions. These special machines ensure optimum performance in all areas of selective mining. Their robust construction allows them to withstand extreme loads and ensures high availability and long-term, lasting profitability in tough demolition operations.

- The LDC system (Liebherr Demolition Control) visualizes the position of the demolition equipment and thus ensures a high degree of safety and stability
- The 30° adjustable operator's cab ensures optimum visibility into the working area
- Easy transport thanks to the hydraulically adjustable undercarriage width and removable counterweight (optionally also hydraulic)
- The optional water sprinkler system prevents dust formation in the working area

		R 940 Demolition Litronic	R 950 Demolition Litronic	R 960 Demolition Litronic	R 980 Demolition Litronic
Generation		6	6	6	6
Operating weight	lb	107,370-140,880	117,070-167,220	170,420-215,390	390,220-435,410
Engine output (SAE J1349)	HP / kW	268 / 200	295 / 220	335 / 250	563 / 420
Working height	ft in	75'6"	90'3"	108'3"	196'10"



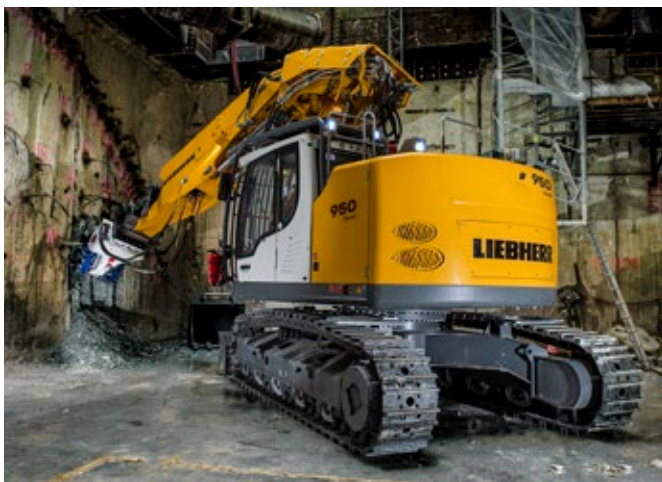
## Crawler excavators

# Tunnel excavators

Liebherr tunnel excavators meet the highest demands for extreme underground use. The special tunnel swivel arm and various attachments, such as the cutter head, provide the necessary performance for tunnel construction.

- LED headlights for optimum visibility and increased user comfort
- Extremely robust and reliable mechanical and hydraulic quick couplers for a long service life
- Optional power increase and special hydraulic system for optimum use of the mill
- Short tail radius for work in confined spaces
- Reinforced undercarriages, equipment and bodies

		R 930 Tunnel Litronic	R 950 Tunnel Litronic
Generation		6	6
Operating weight	lb	74,300-76,170	95,240-99,870
Engine output (SAE J1349)	HP/kW	173/129	255/190
Tunnel height	ft in	15'7"-24'7"	16'5"-26'3"



## Crawler excavators

# Machines for selected markets

Power, economy, reliability, comfort and easy maintenance are among the strengths of Liebherr crawler excavators. These powerful and productive machines are used in mass earthmoving, material processing and in the quarrying industry. In each case, the engine is adapted to meet the specific exhaust gas regulations of the country concerned.

- Engines that meet the respective standards of the destination countries
- Excellent visibility into the work area
- Uppercarriage platform provides safe access
- Large selection of LED lighting
- High digging and breakout forces

	R 920	R 922	R 924	R 925	R 926
Generation	5	5	5	5	7
Operating weight lb	47,180-48,280	49,710-56,440	55,005-56,220	56,550-57,760	58,090-61,070
Engine output (SAE J1349) HP/kW	148/110	148/110	168/125	168/125	201/150

	R 928	R 930	R 934	R 938	R 945
Generation	7	7	7	7	7
Operating weight lb	63,380-66,800	66,250-70,990	75,290-80,250	81,130-87,190	89,950-102,290
Engine output (SAE J1349) HP/kW	201/150	241/180	268/200	295/220	295/220



# Mining excavators

---

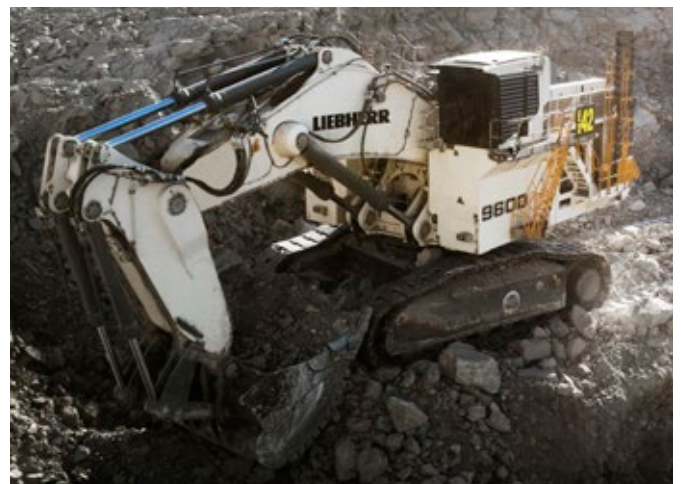


# Liebherr mining excavators are known for their exceptional performance, excellent reliability, simple operation, operator comfort, and easy serviceability.

- Bucket capacities from 9.6 yd<sup>3</sup> to 62.1 yd<sup>3</sup>
- Liebherr internal combustion engine compliant with Hydrogenated Vegetable Oil (HVO) fuel
- Tier 4 Final certified engine available
- New machine generation equipped with Liebherr Power Efficiency solutions
- 40 years of experience in electric-drive mining excavators, with the largest range available for any application
- Assistance systems to support operators to become more efficient through analytics and actionable insights

		R 9100	R 9150	R 9200	R 9300
Generation		6	7	7	8
Operating weight with backhoe equipment	tons	125	143	225	278
Operating weight with face shovel equipment	tons	128	143	231	279
Engine output	HP/kW	757/565	757/565	1,086/810	1,350/1,007

		R 9350	R 9400	R 9600	R 9800
Generation		6	6	8	6
Operating weight with backhoe equipment	tons	333	380	698	882
Operating weight with face shovel equipment	tons	342	389	711	893
Engine output	HP/kW	1,500/1,120	1,810/1,350	3,620/2,700	4,023/3,000



# Articulated dump truck

---





# Articulated dump truck

The TA 230 Litronic has been developed for rugged off-road use. Its efficient drivetrain, permanent 6 x 6 all-wheel drive, reliable traction control and solid axle mounts enable the Liebherr dump truck to tackle any terrain. This means it can produce incredibly fast cycle times – regardless of whether it is on a large construction site, in a quarry or in a tunnel.

- Powerful and robust 6-cylinder Liebherr construction machine engine for continuous operation under full load and enormous traction, even with difficult ground conditions and on slopes
- Maximum ground clearance and large bank angle enable excellent off-road mobility
- Optimal arrangement of components for quick, easy and safe maintenance
- Safe material transport and low material loss thanks to the perfect shape of the dump box
- Exhaust-gas-based dump box heating system ensures optimum heating performance in the dump box and thus smooth unloading
- Sloped engine bonnet for perfect all around visibility and increased safety
- Overall width of less than 9'10", even with wide tires and tailgate, for quick and easy transport
- Innovative weighing system visualizes the payload on the display during the loading process
- Modern driver assistance systems provide support and increase productivity and safety during operation

	TA 230 Litronic
Generation	8
Engine output (SAE J1349) HP / kW	355 / 265
Empty vehicle weight lb	54,200
Max. dump body capacity yd <sup>3</sup>	23.7
Payload lb	61,700





# Assistance systems



## Automatic traction control

The actively controlled inter-axle differential locks give the Liebherr TA 230 and automatic traction control system. As soon as slip occurs on one axle, the torque is intelligently redistributed to the axles with traction. Add-on axle differential locks deliver maximum forward momentum in the most adverse conditions.



## Hill start assistant

Release the brake, press the accelerator and move off uphill with full control. The standard hill start assistant prevents the nuisance of rolling backwards on gradients through its intelligent control of the starting torque thus enabling you to start on any gradient, safely and conveniently, regardless of whether the truck is filled or empty.



## Height lift limitation

The TA 230 has been developed for a wide range of uses from one construction site to another. Our dump truck has a height lift limitation for this purpose, which can be adjusted intuitively using the touchscreen display. When working in a height-critical area, the dump body lift is limited by this system – easily and safely.

You can find more information about the assistance systems here:



# Mining trucks

---



**Liebherr offers mining trucks that provide a competitive edge at the lowest cost per ton in all equipment classes. Technical innovation, brand reliability, and excellent productivity make Liebherr trucks impressive.**

- Liebherr AC drive system on all truck models provide a modular platform for future powertrain technologies
- Low emission solutions available with Trolley Assist available on all Liebherr mining trucks
- Complete Liebherr powertrain with the D98 engine and Tier 4 Final certified option available
- Next generation of machine automation
- On-board operator assistance systems support operators to become more efficient

		<b>T 236</b>	<b>T 264</b>	<b>T 274</b>	<b>T 284</b>
Nominal payload	tons	110	265	336	up to 413
Gross vehicle weight	tons	198	459	582	up to 680
Engine output	HP/kW	1,200/895	2,700/2,013	3,648/2,720	4,023/3,000



# Wheel loaders

---





## Wheel loaders

# Medium-sized wheel loaders

The wheel loaders combine the best features of all the series and are genuine powerhouses. With their versatility and maneuverability, they are equipped for numerous applications and impress with their exceptional productivity and performance.

- Powerful, optimized Z-bar kinematics and improved working hydraulics ensure maximum breakout, holding and return forces
- An optimized hydrostatic travel drive and increased engine power create considerable efficiency increases with consistently low fuel consumption
- Numerous assistance systems, such as active personnel detection and the automatic functions for the lift arms enable safe, efficient and convenient operation
- The L 538 Speeder features greater speed and enables faster work cycles, especially over longer distances, which increases performance and productivity

		L 526	L 538	L 538 Speeder	L 546
Generation		8	8	8	8
Tipping load	lb	11,090-19,245	13,710-21,275	14,330-21,825	15,720-24,275
Bucket capacity	yd <sup>3</sup>	2.60-7.20	2.90-8.50	2.90-8.50	3.40-9.80
Operating weight	lb	29,035-32,560	32,010-35,385	32,740-36,045	33,975-37,410
Engine output	HP / kW	156 / 116	173 / 129	225 / 168	185 / 138

The machine data is listed for the standard version.





**Intelligent engineering –  
when technology combines comfort and safety**

Into the comfort zone – into the cab of Liebherr's medium-sized wheel loaders. The modern cab design is optimally adapted to the day-to-day needs of the machine operators. The spacious and ergonomically designed operator's cab offers perfect conditions for comfortable and productive work, and can be individually adjusted to the respective operator.



**Versatile wheel loaders for every application**

The optimized Z-bar kinematics of Liebherr's medium-sized wheel loaders are powerful and performance-oriented, and offer countless application options. In combination with the proven Liebherr travel drive and the extended selection of larger standard buckets, a wide range of applications is taken to a new level.



## Wheel loaders

# XPower® wheel loaders

XPower® is an innovative machine concept that combines performance, fuel-efficiency, robustness and comfort. With their power-split travel drive, the XPower® wheel loaders work with superior economy and maximum efficiency for all applications.

- The Liebherr XPower® travel drive combines the hydrostatic drive for short loading maneuvers with the mechanical drive for long distances and inclines
- The powerful and efficient travel drive ensures maximum efficiency for all requirements, and thus a low fuel consumption and lower operating costs
- Available with Z-bar or industrial kinematics as well as various attachments for a high handling capacity
- Intelligent component installation ensures greater productivity due to lower wear and reduced downtimes

		L 550 XPower®	L 556 XPower®	L 566 XPower®	L 580 XPower®	L 586 XPower®
Generation		6	6	6	6	6
Tipping load	lb	18,300-27,560	20,505-30,315	26,675-35,055	32,630-42,990	41,890-49,605
Bucket capacity	yd <sup>3</sup>	3.40-12.40	3.65-13.10	4.60-15.70	5.90-18.30	6.55-11.10
Operating weight	lb	40,895-45,415	43,210-47,620	52,690-59,305	60,960-66,360	71,870-74,735
Engine output	HP/kW	219/163	245/183	272/203	312/233	353/263

The machine data is listed for the standard version.







### **More power, greater productivity**

The innovative Liebherr XPower® travel drive combines the best features of two types of drive for maximum efficiency and low fuel consumption. Faster work cycles, high tipping loads, and increased machine availability result in high productivity.



### **A reliable partner – robust and durable machines**

Tried and tested over decades with proven excellence – the specially developed components of Liebherr wheel loaders demonstrate their sophisticated technology and durability. The high level of quality offers maximum reliability and availability even under the toughest operating conditions.



## Wheel loaders

# Machines for selected markets

This wheel loader series is specifically designed for the requirements of markets outside Europe, North America and Australia. The Liebherr wheel loaders stand out especially in these regions due to their familiar Liebherr quality, their impressive power and their fuel efficiency.

- Sophisticated engine concepts adapt to the respective requirements of the target country
- The hydrostatic travel drive enables optimal load transmission to the components, which significantly improves working efficiency and promotes faster loading cycles
- The fuel-saving drive concept also reduces operating costs and the environmental load while providing maximum handling capacity
- Specially developed components, sophisticated technology and high-quality materials ensure high levels of reliability and availability
- The spacious and ergonomic operator's cab provides the perfect conditions for safe, comfortable and productive work

		L 524	L 538	L 550	L 566	L 580
Generation		5	5	5	5	5
Tipping load	lb	14,265-16,535	18,300-20,945	20,505-27,405	28,440-35,495	35,055-42,220
Bucket capacity	yd <sup>3</sup>	2.20-7.20	2.90-8.50	4.10-12.40	4.60-15.70	5.90-18.30
Operating weight	lb	22,930-26,895	28,220-30,755	39,130-42,100	51,700-58,310	59,415-63,715
Engine output Stage II	HP / kW	-	-	225 / 168	268 / 200	294 / 219
Engine output Stage IIIA	HP / kW	115 / 86	139 / 104	-	-	-
Engine output BS4	HP / kW	-	-	225 / 168	-	-
Engine output NR-IV	HP / kW	-	-	216 / 161	284 / 212	301 / 224

The machine data is listed for the standard version.



**Powerful and efficient travel drive**

The hydrostatic drive, combined with automatic limited slip differential, delivers excellent traction while also preventing wheel spin. Productivity is increased and tire wear reduced.



**Durability and sustainability – quality down to the last detail**

Liebherr wheel loaders provide maximum performance even under the toughest of operating conditions. The intelligent cooling system guarantees continuous cooling output while simultaneously reducing cleaning expenses, resulting in more efficient and cost-effective work.

# Wheel loaders

## Assistance systems



### Rear personnel detection with automatic braking

Four eyes are better than two – active personnel detection helps the operator avoid collisions with people and obstacles. This is achieved through active warning and an automatic brake assistant, with the system reacting to persons at a greater distance than to other obstacles. This avoids unnecessary warnings while improving safety and productivity at work.



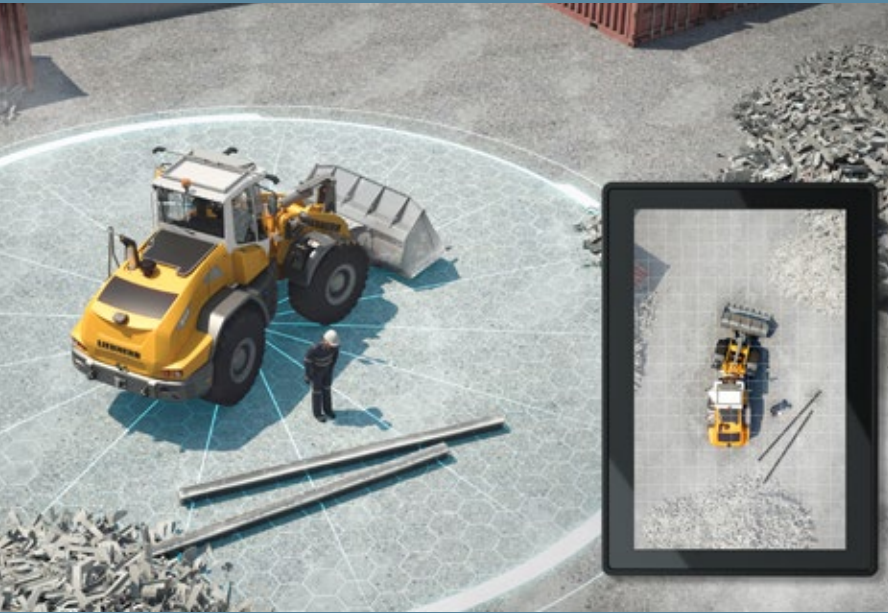
### Roof camera for front area monitoring

Extended view – the roof camera for front area monitoring greatly extends the field of vision in front of the wheel loader. Particularly when using large working attachments such as light material and high dump buckets, persons in the area can be identified more easily and quickly, thus greatly reducing the potential risk.



### Liebherr weighing system with “Truck Payload Assist”

Intelligently balanced – the integrated weighing system not only determines the weight of the individual bucket loads, but Truck Payload Assist shows the operator the ideal target weight for each work cycle based on the total amount to be loaded. This helps make loading cycles faster and more accurate, protects the machine and increases productivity.



### Skyview 360°

Everything in view – the Skyview 360° system has been fundamentally revised and now has impressive high-definition image quality. The system offers an overview of the whole area around the machine, so that potential hazards can be identified earlier and accidents prevented. The work cycles can be carried out faster, more efficiently and more safely, saving time and money.



### Automatic bucket functions

Automatic and functional – the optional and individually available assistance systems allow faster work cycles for more effective and therefore more productive work. The automatic lift arm functions include a bucket tilt assistant, stroke limit damping, a visualization of the equipment position, a programmable bucket return-to-dig function, and programmable auto lifting and lowering.



### Integral tire pressure monitoring system

Perfect pressure – the sensor-based, integrated tire pressure monitoring system provides an important overview of the current tire pressure. As soon as the pressure changes, a warning appears on the display.

You can find more information about the assistance systems here:



# Crawler tractors

---





# Crawler tractors

Always utilize the full performance – even with changing weather conditions and material qualities. Whether during heavy shifting operations or precise leveling: Liebherr crawler tractors keep you in the fast lane. The hydrostatic travel drive always provides the optimum pushing speed. Driver assistance systems guarantee maximum leveling quality and efficiency.

- Continuously variable hydrostatic drive for maximum productivity and efficiency due to constant engine speed and ECO mode
- Outstanding leveling capabilities and generation 8 driver assistance systems are standard
- Quiet comfort cab where all control elements can be individually adjusted to the operator, and with perfect visibility in every direction
- Centralized and easily accessible maintenance points and tilting cab come as standard for maximum machine availability

		PR 716	PR 726	PR 736	PR 746	PR 756
Generation		8	8	8	8	8
Engine output	HP / kW	130 / 97	168 / 125	214 / 160	254 / 190	349 / 260
Operating weight	lb	29,320–34,830	38,581–45,856	46,700–56,200	57,100–69,446	78,044–94,799
Capacity	yd <sup>3</sup>	3.82–4.32	4.36–5.06	5.36–7.27	7.85–9.42	11.67–15.43
Speed	mph	0–6.2	0–6.5	0–6.5	0–6.5	0–6.5

		PR 766	PR 776
Generation		8	6
Engine output	HP / kW	416 / 310	757 / 565
Operating weight	lb	117,859–119,783	158,292–161,354
Capacity	yd <sup>3</sup>	17.8–22.2	24.2–28.8
Speed	mph	0–6.5	0–6.5





# Assistance systems



## Let your creativity run wild

The “Free Grade” Liebherr assistance system is provided as standard, providing active blade stabilization during the leveling of surfaces, ramps and banks on longitudinal and lateral slopes. The system improves the leveling quality of unpracticed operators – and provides convenient relief for professionals. This increases productivity while also saving time.

Due to the continuous graphic display of the blade and crawler position, “Free Grade” also functions as a fall-back solution if laser or GPS systems fail.



## Define your standard

“Definition Grade” is standard in all new generation 8 crawler tractors and makes it possible to model a surface without a rotation laser. All you need is a point of reference from your surveying technician. Automatic blade lowering to the reference dimension makes the creation of a precise 2D surface into child’s play – even over long distances and in different directions of propulsion.

You need neither a laser nor a machine control system with a satellite connection. At the same time, the Liebherr technology enables leveling speeds that have not been reached before.



## Precision in every dimension

The optional roof-mounted “3D Grade” solution (Topcon) is assembled and calibrated at the factory, so you can get started straight away. The fully automatic machine control system positions the 6-way blade of your crawler precisely in all three dimensions. An open architecture and standardized terrain models allow easy integration into digital construction site processes.

## Ready for Trimble and Leica

As a further option, preparations for fitting the latest 2D and 3D machine control systems from Trimble and Leica are available for your Liebherr crawler tractor, allowing you to upgrade your machine for future operations at any time.



You can find more information about the assistance systems here:

# Crawler loaders

---





# Crawler loaders

Maximum traction and breakout forces with unbeatable maneuverability: Liebherr crawler loaders serve in operating locations that remain out of reach for other construction machines. With an efficient hydrostatic travel drive and intelligent driver assistance systems, they integrate themselves into earthwork sites as perfect machines.

- A continuously variable and always friction-locked hydrostatic travel drive for enormous propulsive force and outstanding maneuverability
- Individually adjustable working hydraulics with intelligent assistance systems for fast loading cycles
- High working comfort due to large noise and vibration-dampened cab, ergonomic control elements and automatic air conditioning
- Outstanding visibility, ideal illumination of the working environment and fast service accessibility for safe operation and high machine availability

		LR 626	LR 636
Generation		8	8
Engine output	HP / kW	147 / 110	181 / 135
Operating weight	lb	36,288-42,681	47,818-50,810
Bucket capacity	yd <sup>3</sup>	1.96-2.35	2.49-6.02





# Pipelayers

---



# Whether laying pipes on slopes or soft ground: A high load force, a continuously variable hydrostatic drive, precisely controllable working hydraulics and intelligent safety functions enable maximum productivity and construction site safety.

- Robust and proven construction with special cold and heat options for maximum machine availability at any operating location
- Large comfort cab, designed according to the latest ergonomic insights, with optimal visibility of the operating area
- Sophisticated safety concept: Roll over protective structure cab, variable adjustment boom cylinders, automatic parking brake, load moment limitation etc.
- Low-maintenance hydrostatic drive system with load-sensing working hydraulics for lower fuel consumption
- Intuitive single-lever control of travel and working hydraulics and precise boom guidance via lift cylinder

		RL 56	RL 66
Generation		6	6
Engine output	HP / kW	281 / 210	369 / 275
Operating weight	lb	101,523-102,030	130,844-132,057
Lift capacity	lb	158,733	216,273



# Duty cycle crawler cranes

---





In addition to material handling, gravel extraction and recycling, Liebherr's duty cycle crawler cranes are used mainly for deep foundation work. The product range includes machines for all performance classes from 44 tons to 331 tons. The proven machines are distinguished through flexibility, cost effectiveness and outstanding performance.

- State-of-the-art drive and control systems
- Low-maintenance free-fall winches with high pull forces
- High energy efficiency - minimum consumption despite high turnover
- Ideal for continuous operation in material handling operation thanks to robust design

		HS 8040.1	HS 8070.1	HS 8100.1	HS 8130.1	HS 8200	HS 8300.2
Max. capacity	tons	44	77	110	143	220	331
Min. transport weight	lb	90,390	77,162	88,185	112,436	103,617	159,174
Min. transport width	ft	9.8	9.8	11.5	11.5	11.5	13.1
Dragline bucket max. depth	ft	42.7	45.9	49.2	55.8	72.2	82
Dragline bucket max. capacity	m <sup>3</sup> / yd <sup>3</sup>	1.9/2.5	3.8/5	4.6/6	5.4/7.1	7.6/10	10.8/14.1
Clamshell grab							
mechanical	m <sup>3</sup> / yd <sup>3</sup>	3/3.9	6/7.8	7/9.2	8/10.5	14/18.3	20/26
hydraulic	m <sup>3</sup> / yd <sup>3</sup>	-/-	7/9.2	8/10.5	10/13.1	17/22.2	22/28.8
Pull force winches (2 winches each)	tons	2 x 13	2 x 22	2 x 30	2 x 39	2 x 39	2 x 55/77
Engine output	HP / kW	308 / 230	429 / 320	523 / 390	757 / 565	1,005 / 750	1,005 / 750



# Deep foundation machines

---





# Deep foundation machines

## Drilling rigs

Liebherr drilling rigs (LB series) are suitable for a wide spectrum of applications in the deep foundation sector. In addition to Kelly drilling, they are also commonly used for continuous flight auger, full displacement, and double rotary drilling. Down-the-hole drilling is an exceptionally efficient method when working in hard ground or rock.

- User-friendly rotary drive with high torque
- Optimum force transmission, thus low wear and long service life
- Designed for continuous operation
- Fast working cycles achieved
- High stability thanks to long crawlers

		LB 20.1	LB 25	LB 30	LB 35	LB 45	LB 55
Weight	lb	122,357	159,174	173,063	220,683	255,736	358,251
Max. torque	lbf ft	147,512	184,390	221,269	255,934	333,378	410,822
Max. pull/crowd force	lbf	44,962	67,443	71,939	89,924	89,924	125,893
Kelly drilling max. drilling depth	ft	153.5	174.5	232.3	254.3	311.7	396.0
Kelly drilling max. drilling diameter	ft	4.9	10.8	11.2	13.5	14.8	15.7
Engine output	HP / kW	308 / 230	429 / 320	429 / 320	523 / 390	523 / 390	757 / 565
Available as battery-powered version		LB 16 unplugged	LB 25 unplugged	LB 30 unplugged			



## Deep foundation machines

# Piling and drilling rigs

The combined piling and drilling rigs (LRB series) are suitable for carrying out piling work with vibrator or hydraulic hammer on the one hand, and for drilling applications using a double rotary head, continuous flight auger, or Kelly drilling equipment on the other. The universal machines are characterized by both high performance and reliability, as well as high efficiency.

- Excellent stability and low ground pressure thanks to an especially robust undercarriage
- Rope crowd system for high pull and crowd forces
- Large working area thanks to parallel kinematics
- Compact uppercarriage resulting in a small swing radius
- Easy transportation and quick set-up

		<b>LRB 16</b>	<b>LRB 18</b>	<b>LRB 23</b>	<b>LRB 355.1</b>
Weight	lb	110,231	114,640	173,063	209,439-240,304
Max. crowd distance	ft	52.5	59.0	75.5	88.6
Max. pull/crowd force	lbf	44,962/33,721	44,962/33,721	71,939/71,939	89,924/89,924
Max. torque rotary drive	lbf ft	88,507	88,507	221,269	331,903
Engine output	HP/kW	523/390	523/390	804/600	804/600 1,005/750



## Deep foundation machines

# Piling rigs

The piling rigs (LRH series) with a fixed or swinging leader are the first choice when large radii and extreme angles are required. The combination of carrier machine from the successful series of duty cycle crawler cranes, drilling rigs, or crawler cranes and a stable leader showcases excellent performance and flexibility.

- Robust leader thanks to the lattice design
- Sophisticated leader kinematics for high radii and inclinations
- Vertical leader adjustment for larger working ranges
- Optimum electrical and hydraulic control of leader and working attachments
- High level of stability and working safety

		LRH 100.1	LRH 200	LRH 600
Max. pile length	ft	62.3	80.4	111.5/144.4/180.4
Max. pile weight	lb	17,637	35,274	88,185
Max. inclination		1:3	1:3	1:4/1:3
Radius	ft	28.6	25.6	49.2
Hammer		H 6	H 6, H 10	H 15
Impact energy	lbf ft	53,104	88,507	165,951
Carrier machines		LB 25	LB 30	HS 8200
				LR 1300.1 SX, LR 1400 SX
Available as battery-powered version		LRH 100.1 unplugged	LRH 200 unplugged	



# Duty cycle crawler cranes and deep foundation machines

## Assistance systems



### MyJobsite

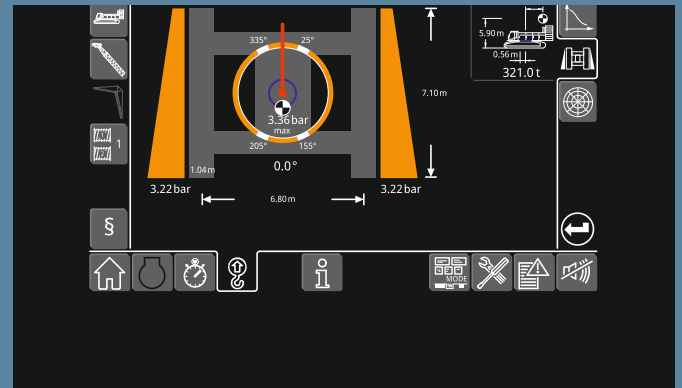
Using the MyJobsite software solution all relevant process, machine, construction site, and positioning data (LIPOS) can be recorded, displayed, analyzed, managed, and evaluated in one central location. The collected data can be accessed via a web browser when an internet connection is active.

With the recorded PDE data, a working protocol is automatically generated as proof of quality directly after completion of a work process. The parameters of the driving protocol can be defined and assigned in advance, which is a significant time-saver.



### LIPOS – Liebherr positioning system

Deep foundation machines from Liebherr equipped with LIPOS create the ideal conditions for precise positioning and execution of drilling and pile driving activities. The positioning system supports the machine operator with the precise alignment of the attachment tools using the latest satellite technology. The recorded data serves as evaluation of the jobsite and can be used as proof of quality. The deep foundation jobsite becomes transparent and comprehensible.



### Ground pressure visualisation

The ground load-bearing capacity and the monitoring of the ground pressure are decisive for the safe operation of a construction machine. Ground pressure visualization calculates the current ground pressure of the machine in real time and compares it with the specified safety limits that the operator has entered in the control system. Machine center of gravity and ground pressure are displayed on the control monitor so that the operator can avoid dangerous situations.

You can find further digital solutions and assistance systems here:



# Quick coupling systems and attachments

---







# Quick coupling systems

Liebherr's quick coupler systems, which have been tried and tested for decades and are subject to continuous development, guarantee maximum safety and efficiency as well as outstanding flexibility. Almost any hydraulic or mechanical attachment can be changed conveniently, quickly and easily. Depending on the machine and application, the fully automatic Solidlink quick coupler system as well as hydraulic or mechanical quick coupler systems are available.

Depending on the configuration level of the quick coupler system:

- Load lift hooks with solid safety flaps
- Quick coupler adapter made of high-strength sheet steel
- Positive locking transverse to the digging direction
- Maximum safety thanks to sensors for position and attitude monitoring
- The locking pin is visible from the cab during attachment changes
- Efficient attachment changes in seconds, controlled from the cab
- Robust and durable coupling block for hydraulic and electrical connections
- Offers maximum flexibility in daily use on the construction site
- Increased machine utilization of up to 90% thanks to the expanded application spectrum

	Fully automatic quick coupler system Solidlink	Hydraulic quick coupler system	Mechanical quick coupler system
Opening / closing the quick coupler	hydraulic	hydraulic	manual
Connecting / disconnecting the hydraulic lines	automatic	manual	manual
Available for	hydraulic excavators, wheel loaders	hydraulic excavators	hydraulic excavators



# Attachments for hydraulic excavators

---

Liebherr develops numerous attachments which, in terms of their shape, build and technical equipment, are specially tailored to the respective applications and the size of the respective machines. Real-world experience and continuous product updates ensure that Liebherr attachments are always state-of-the-art.

- Our large bucket range offers a perfect selection for a wide variety of jobs in accordance with the respective ground conditions. Depending on bucket type, use and ground condition, a choice can be made between a cutting edge, different teeth and other features. Our backhoe and 2in1 buckets, with their innovative geometry and optimum weight, enable perfect penetration and low digging resistance, while our tilt and ditch cleaning buckets are ideal for leveling work and slope grading thanks to their internal and thus optimally protected slewing cylinder and wide cutting edge.
- Clamshell grabs with different shell types and sizes are ideally suited to a wide range of applications and can be specified with numerous optional features. Large, flow-optimized oil ducts and powerful rotary actuators ensure fast work cycles, while the sealed rotary drive and solid construction guarantee a long service life.
- Robust sorting and demolition grabs are available for tasks in the fields of quarrying, demolition and river engineering.
- The tilt angle and endless rotation of the tiltrotator, as well as the tilt angle of the LiTiU tilt unit, extend the working range and application spectrum enormously, even in places that are difficult to access. Your flexibility and productivity can thus be vastly increased, and the elimination of shunting the machine into position protects the ground.
- The stick extension, pallet fork and a wide range of load-lifting attachments turn our hydraulic excavators into multifunctional working machines on any construction site and offer countless expanded applications.



# Service

---





Service

# Our solutions for your satisfaction

---

## **Reliability and support – for decision-makers and easy planning**

Are you interested in more than just short term success – do you also want to be successful in the long term? Do you regard success not just in terms of turnover, but also in terms of satisfied customers and the conservation of resources? Our comprehensive service network delivers consistency and a sound basis for planning – today and in the future. If necessary, our experts are available for you 24 / 7. Furthermore, our genuine parts and service experts will ensure that your machines retain their value.

## **Saving time – hand in hand to find the perfect solution**

Do you want to maintain and service your machines yourself? In the evening, do you want to get everything ready quickly and flexibly for the next day's work?

With the MyLiebherr portal, you can access all our services and solutions with just a few clicks. Use our sophisticated logistics for fast deliveries of the parts you require, all in genuine manufacturer quality, of course. This will enable you to maximize the efficiency of your operations. If you get stuck, our MyAssistant will support you and our experts are only a phone call away.

## **Financial transparency – plan with CarePacks**

Modular maintenance packages and Reman components made available to suit your company and budget.

Do you tend to focus on the numbers and the information they convey? Do you want to keep your current investments under review at all times and ideally be able to calculate in advance how much using the machine will cost, and evaluate its availability?

Liebherr's modular CarePacks are tailored to your needs to show you in advance precisely what costs you can expect to bear to ensure that your machine will continue to perform at its best in the future. For older machines, our Reman range delivers a smart, low cost solution for your business.



For further information,  
services and contact details, visit:



## Service

# A selection of our services for you

---



### **MyLiebherr**

Whether construction machines, mining equipment, mobile and crawler cranes, material handling equipment, maritime cranes or components: at [www.myLiebherr.com](http://www.myLiebherr.com) you will find everything you need for your Liebherr machines. Our customer portal offers extensive, digital services and software applications. You can also contact Liebherr and our service partners directly.



### **CarePacks**

Investments that can be clearly planned and advance machine planning – all this is made easy with our modular CarePacks. That leaves you to concentrate exclusively on your work.



### **Reman range**

The same performance and quality as a new part with reduced costs – this is what the replacement parts in our Reman range deliver. An ideal solution, particularly for older machines, that also lets you contribute to the conservation of valuable resources.

# Contact us

---

## Mobile and Crawler Cranes

4800 Chestnut Ave.  
Newport News, VA 23607  
Phone +1 757 928 2515

7075 Bennington St.  
Houston, TX 77028  
Phone +1 713 636 4000

880 South Beckman Road  
Lodi, CA 95240  
Phone +1 209 333 5900

847 State Route 12  
Frenchtown, NJ 08825  
Phone +1 908 483 2403

[crawler.cranes.usa@liebherr.com](mailto:crawler.cranes.usa@liebherr.com)  
[mobile.cranes.usa@liebherr.com](mailto:mobile.cranes.usa@liebherr.com)

## Crawler Cranes and Deep Foundation Machines

7075 Bennington St.  
Houston, TX 77028  
Phone +1 713 636 4000

880 S. Beckman Road  
Lodi, CA 95240  
Phone +1 209 333 5900  
[foundation.equipment.usa@liebherr.com](mailto:foundation.equipment.usa@liebherr.com)

847 State Route 12  
Frenchtown, NJ 08825  
Phone +1 908 483 2403  
[mobile.cranes.usa@liebherr.com](mailto:mobile.cranes.usa@liebherr.com)

### Liebherr USA, Co. Corporate Office

4800 Chestnut Ave.  
Newport News, VA 23607  
Phone 757-240-4250  
[liebherr.usa@liebherr.com](mailto:liebherr.usa@liebherr.com)

## Earthmoving and Material Handling Technology

Main Office  
4800 Chestnut Ave.  
Newport News, VA 23607  
Phone +1 757 240 4250  
[construction.usa@liebherr.com](mailto:construction.usa@liebherr.com)

Retail  
8200 Fayetteville Road  
Raleigh, NC 27603  
Phone +1 919 329 0080  
[les-nc.usa@liebherr.com](mailto:les-nc.usa@liebherr.com)

Retail  
10119 Residency Road  
Manassas, VA 20110  
Phone +1 703 392 0111  
[les-va.usa@liebherr.com](mailto:les-va.usa@liebherr.com)

Retail  
6940 O'Connor Drive  
Hanover, MD 21076  
Phone +1 410 379 3994  
[les-md.usa@liebherr.com](mailto:les-md.usa@liebherr.com)

Retail  
4800 Chestnut Ave.  
Newport News, VA 23607  
Phone +1 757 926 5124  
[les-nn.usa@liebherr.com](mailto:les-nn.usa@liebherr.com)

Retail  
707 Mulberry St.  
Kansas City, MO 64101  
Phone +1 816 471 6295  
[les-mo.usa@liebherr.com](mailto:les-mo.usa@liebherr.com)

## Mining

5800 S. Douglas Hwy.  
Gillette, WY 82718  
Phone +1 307 686-0948

4100 Chestnut Ave.  
Newport News, VA 23607  
Phone +1 757 245 5251

9326 E Idaho St.  
Elko, NV 89801  
Phone +1 775 738-7386

[mining.sales.usa@liebherr.com](mailto:mining.sales.usa@liebherr.com)

# LIEBHERR