

---

# R 918

# Litronic

---

## LIEBHERR

Crawler excavator



**Generation**

6

**Engine**

161HP / 120 kW

Tier 4 Final

**Operating weight**

21,650 kg / 47,730 lb

**Bucket capacity**

0.55 - 1.15 m<sup>3</sup> / 0.72 - 1.50 yd<sup>3</sup>



# Experience the progress R 918

---

## ① Equipment

- Longer lifespan of components and higher productivity thanks to automatic centralized lubrication system
- Safety check valves for hoist and stick cylinders

## ② Comfort

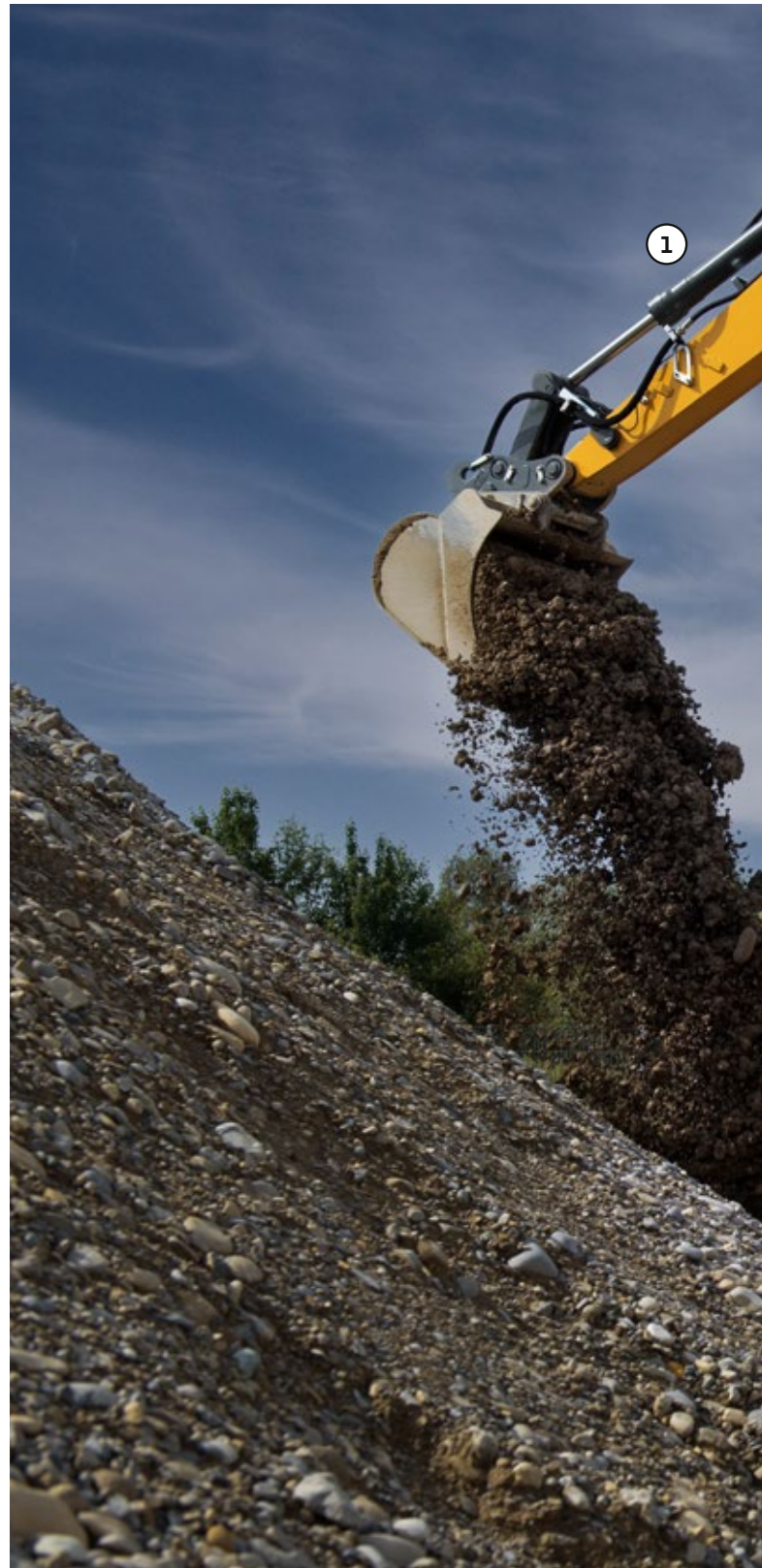
- Spacious, air-conditioned work space
- Airsprung seat with vertical and horizontal suspension
- Easy-to-use high resolution 9" color touchscreen
- 3" orange seat belt

## ③ Undercarriage

- Robust X-frame undercarriage, easy to secure thanks to its integrated eyelets
- Easy maintenance
- Several combinations of undercarriage and blades / support blades available
- Extra storage as an option
- Maintenance-free travel gear and track rollers with lifetime lubrication

## ④ Safety

- Panoramic visibility with no obstructions and camera on the rear and the right side equipment for enhanced safety
- Lifiable console for easy and safe access to cab
- ROPS certified cab structure: rollover protection
- Emergency exit via the rear cab window
- Right window and windshield in laminated and tinted glass



## ⑤ Engine

- US EPA Tier 4 Final engine with SCR system and diesel oxidation catalyst
- Automatic idle-stop

## ⑥ Maintenance

- Servicing concept, with service points accessible from ground level
- Engine oil level and filling nozzle accessible from ground level
- Standard shut-off valve on hydraulic tank outlet





# Technical data



## Engine

<b>Rating</b>	
per SAE J1349	161 HP (120 kW) at 1,800 rpm
per ISO 9249	163 HP (120 kW) at 1,800 rpm
<b>Torque</b>	682 Nm at 1,400 rpm / <b>503 lbf ft at 1,400 rpm</b>
<b>Model</b>	D924 A7-04 - FPT motor designed for Liebherr
<b>Type</b>	4 cylinder in-line
Bore	104 mm / <b>4.1 in</b>
Stroke	132 mm / <b>5.2 in</b>
Displacement	4.5 l / <b>275 in<sup>3</sup></b>
<b>Engine operation</b>	4-stroke diesel Common-Rail Turbo-charged and after-cooler
<b>Exhaust gas treatment</b>	Tier 4 Final DOC + SCR Passive regeneration by thermo management Option Particle filter
<b>Cooling system</b>	Water-cooled and integrated motor oil cooler
<b>Air cleaner</b>	Dry-type air cleaner with pre-cleaner, primary and safety elements
<b>Fuel tank</b>	368 l / <b>97 gal</b>
<b>Urea tank</b>	46 l / <b>12 gal</b>
<b>Electrical system</b>	
Voltage	24 V
Batteries	2 x 135 Ah / 12 V
Alternator	Three-phase current 28 V / 140 A
Engine idling	Sensor controlled



## Hydraulic controls

<b>Power distribution</b>	Via control valves with integrated safety valves, simultaneous and independent actuation of undercarriage, swing drive and equipment
<b>Servo circuit</b>	
Equipment and swing	Proportional via joystick levers
Travel	- Proportional control via foot pedals or removable levers - Speed pre-selection
<b>Additional functions</b>	Proportional regulation via foot pedals or mini-joystick



## Hydraulic system

<b>Hydraulic pump</b>	Liebherr, variable displacement, swashplate pump
Max. flow	390 l/min. / <b>103 gpm</b>
Max. pressure	350 bar / <b>5,076 psi</b>
<b>Hydraulic pump regulation and control</b>	Liebherr-Synchron-Comfort-system (LSC) with electronic engine speed sensing regulation, pressure and flow compensation, torque controlled swing drive priority
<b>Hydraulic tank</b>	170 l / <b>45 gal</b>
<b>Hydraulic system</b>	max. 350 l / <b>max. 93 gal</b>
<b>Filtration</b>	1 main return filter with integrated partial micro filtration (5 µm / <b>2,500 mesh</b> )
<b>Cooling system</b>	Compact cooling system comprising cooling unit for water, hydraulic oil and charge air with stepless, thermostatically controlled fan
<b>MODE selection</b>	Adjustment of engine and hydraulic performance via a mode pre-selector to match application, e.g. for especially economical and environmentally friendly operation or for maximum digging performance and heavy-duty jobs
<b>Engine speed and performance setting</b>	Stepless adjustment of engine output and hydraulic power via engine speed



## Swing drive

<b>Drive</b>	Liebherr swashplate motor with integrated brake valve and torque control
<b>Transmission</b>	Liebherr compact planetary reduction gears
<b>Swing ring</b>	Liebherr, sealed race ball bearing swing ring, internal teeth
<b>Swing speed</b>	0-10.0 rpm stepless
<b>Swing torque</b>	51 kNm / <b>37,616 lbf ft</b>
<b>Holding brake</b>	Wet multi-disc (spring applied, pressure released)



## Cab

<b>Cab</b>	ROPS safety cab structure (roll-over protection system according to ISO 12117-2:2008) with windscreen, totally or partially retractable (only upper part), under cab roof, LED work headlights integrated in the ceiling, a door with a sliding window (can be opened on both sides), large storing box and several stowing possibilities, shock-absorbing suspension, laminated right hand side and roof windows, all windows tinted, separate extensible window shades for the sunroof window and windscreen, cigarette lighter and 24 V plug, 12 V plug, cup holder
<b>Operator's seat</b>	Liebherr-Comfort seat, airsprung with automatic weight adjustment, vertical and longitudinal seat damping including consoles and joysticks. Seat and armrests adjustable separately and in combination (adjustable in length, height and inclination), seat heating as standard
<b>Arm consoles</b>	Oscillating consoles with seat, tiltable console left
<b>Operation and displays</b>	Large high-resolution operating unit, intuitive, color display with touchscreen, video-compatible, numerous setting, control and monitoring options, e.g. air conditioning control, fuel consumption, machine and attachment parameters
<b>Air-conditioning</b>	Automatic air-conditioning, recirculated air function, fast de-icing and demisting at the press of a button, air vents can be operated via a menu. Recirculated air and fresh air filters can be easily replaced and are accessible from the outside. Heating-cooling unit, designed for extreme outside temperatures, sensors for solar radiation, inside and outside temperatures
<b>Noise emission</b>	
ISO 6396	70 dB(A) = $L_{pA}$ (inside cab)
2000/14/EC	102 dB(A) = $L_{WA}$ (surround noise)



## Undercarriage

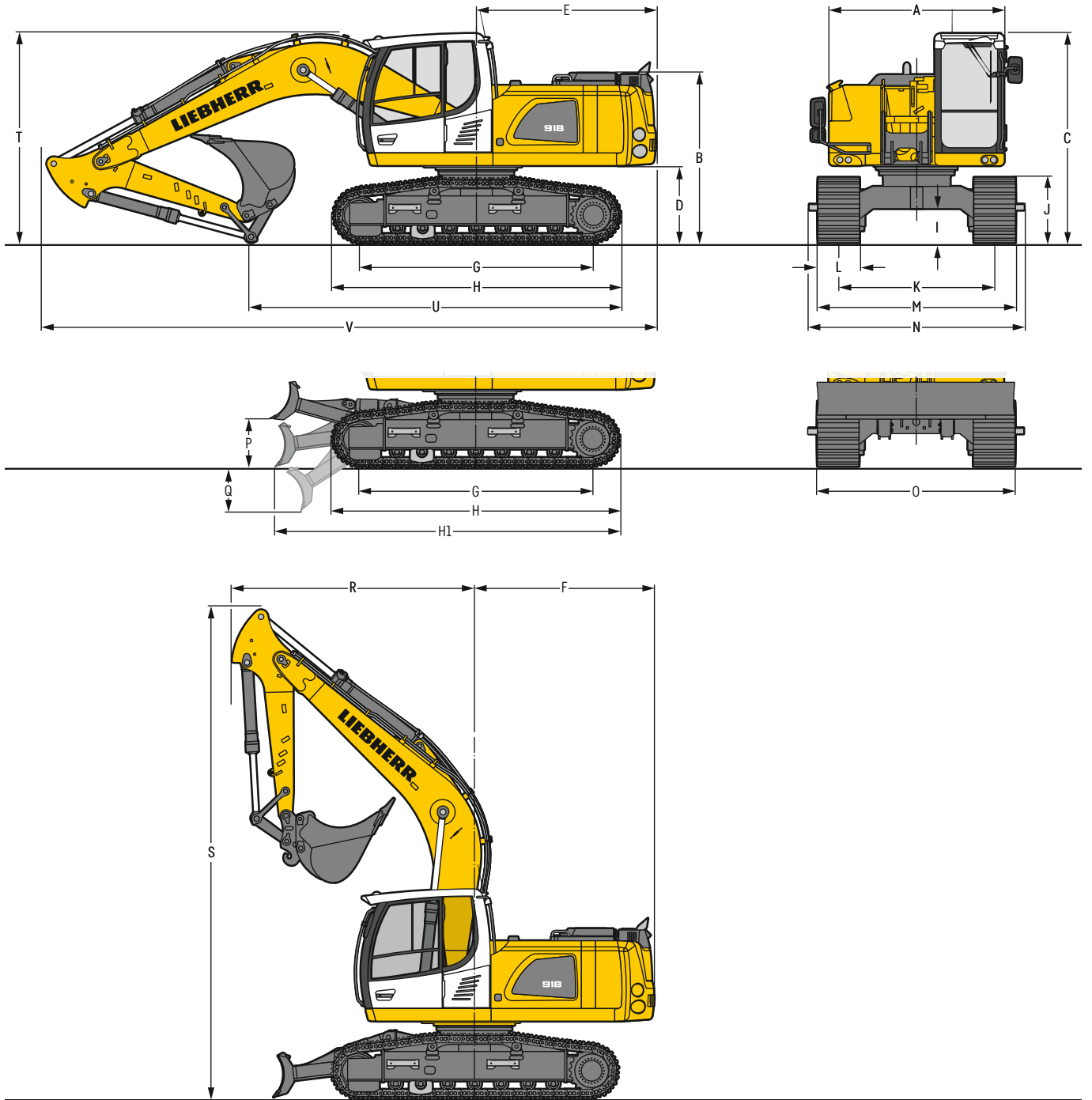
<b>LC</b>	Gauge 2,250mm / 7'5"
<b>Drive</b>	Liebherr swashplate motor with brake valves on both sides
<b>Transmission</b>	Liebherr compact planetary reduction gear
<b>Maximum travel speed</b>	3.2 km/h / <b>2.0 mph</b> low range 6.0 km/h / <b>3.7 mph</b> high range
<b>Drawbar pull on crawler</b>	192 kN / <b>43,163 lbf</b>
<b>Track components</b>	B60, maintenance-free
<b>Track rollers / Carrier rollers</b>	7 / 2
<b>Tracks</b>	Sealed and greased
<b>Track pads</b>	Triple grouser
<b>Holding brake</b>	Wet multi-disc (spring applied, pressure released)
<b>Brake valves</b>	Integrated into travel motor
<b>Lashing eyes</b>	Integrated



## Equipment

<b>Hydraulic cylinders</b>	Liebherr cylinders with seal and guidance systems
<b>Bearings</b>	Sealed, low maintenance
<b>Lubrication</b>	Liebherr central lubrication system

# Dimensions



	LC	mm/ft in	LC with blade	mm/ft in
A	Uppercarriage width	2,525 / 8' 3"		2,525 / 8' 3"
B	Uppercarriage height	2,455 / 8' 1"		2,455 / 8' 1"
C	Cab height	3,030 / 9'11"		3,030 / 9'11"
D	Counterweight ground clearance	1,100 / 3' 7"		1,100 / 3' 7"
E	Rear-end length	2,580 / 8' 6"		2,580 / 8' 6"
F	Tail swing radius	2,580 / 8' 6"		2,580 / 8' 6"
G	Wheelbase	3,370 / 11' 1"		3,370 / 11' 1"
H	Undercarriage length	4,150 / 13' 7"		4,150 / 13' 7"
H1	Undercarriage length with blade	-		4,965 / 16' 3"
I	Undercarriage ground clearance	490 / 1' 7"		490 / 1' 7"
J	Track height	955 / 3' 2"		955 / 3' 2"
K	Track gauge	2,250 / 7' 5"		2,250 / 7' 5"
L	Track pad width	600 / 24" 750 / 30" 900 / 35"		600 / 24" 750 / 30" 900 / 35"
M	Width over tracks	2,850 / 9' 4" 3,000 / 9'10" 3,150 / 10' 4"		2,850 / 9' 4" 3,000 / 9'10" 3,150 / 10' 4"
N	Width over steps	2,800 / 9' 2" 3,000 <sup>1)</sup> / 9'10" <sup>1)</sup> 3,100 <sup>1)</sup> / 10' 2" <sup>1)</sup>		2,800 / 9' 2" 3,000 <sup>1)</sup> / 9'10" <sup>1)</sup> 3,100 <sup>1)</sup> / 10' 2" <sup>1)</sup>
O	Blade width	-		-
P	Max. blade height	-		685 / 2' 3"
Q	Max. blade depth	-		635 / 2' 1"

<sup>1)</sup> width with removable steps

	Stick length	Mono boom 5.20 m / 17'1"
	m / ft in	direct mounting mm / ft in
R	Front swing radius	2.25 / 7'5" 3,550 / 11'8"
		2.65 / 8'8" 3,550 / 11'8"
		3.05 / 10' 3,550 / 11'8"
S	Height with boom up	7,100 / 23'4"
T	Boom height	2.25 / 7'5" 3,050 / 10'
		2.65 / 8'8" 3,150 / 10'4"
		3.05 / 10' 2,950 / 9'8"
U	Length on ground	2.25 / 7'5" 5,350 / 17'7"
		2.65 / 8'8" 5,050 / 16'7"
		3.05 / 10' 6,750 / 22'2"
V	Overall length	8,900 / 29'2"
	Bucket	1.00 m <sup>3</sup> / 1.31 yd <sup>3</sup>

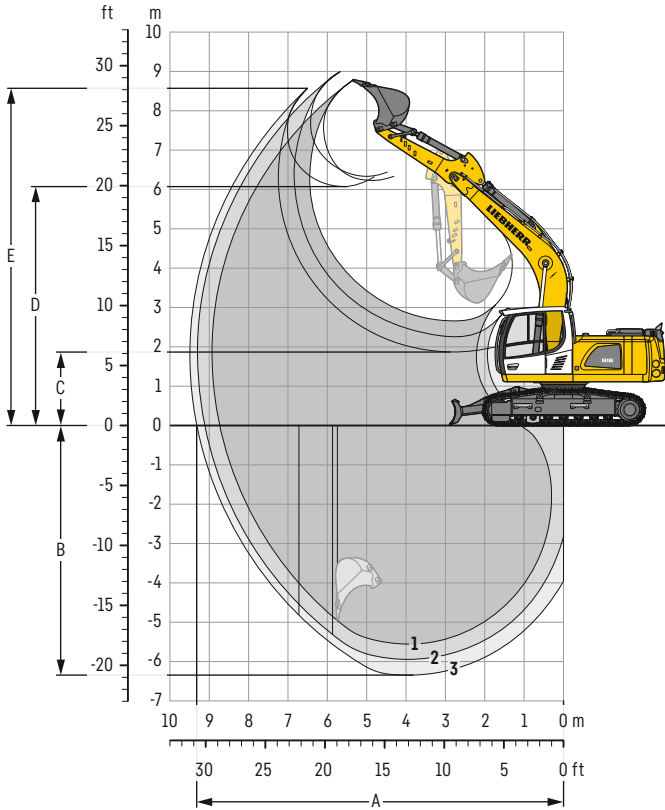
## Transport dimensions

### removable elements disassembled

	Mono boom 5.20 m / 17'1"		
		mm / ft in	
Pad width		600 / 24"	750 / 30" 900 / 35"
Transport width		2,850 / 9' 4"	3,000 / 9'10" 3,150 / 10' 4"
	Stick	mm / ft in	
	m / ft in		
Transport length		8,900 / 29' 2"	
Transport height	2.25 / 7'5"	3,050 / 10'	
	2.65 / 8'8"	3,150 / 10' 4"	
	3.05 / 10'	3,030 / 9'11"	
Bucket		1.00 m <sup>3</sup> / 1.31 yd <sup>3</sup>	

# Backhoe bucket

with mono boom 5.20 m / 17'1"



## Digging envelope

without quick coupler		1	2	3
Stick length	m / ft in	2.25 / 7' 5"	2.65 / 8' 8"	3.05 / 10'
A Max. reach at ground level	m / ft in	8.75 / 28' 8"	9.13 / 29' 11"	9.32 / 30' 3"
B Max. digging depth	m / ft in	5.55 / 18' 3"	5.95 / 19' 6"	6.35 / 20' 10"
C Min. dumping height	m / ft in	2.67 / 8' 9"	2.27 / 7' 5"	1.87 / 6' 2"
D Max. dumping height	m / ft in	6.12 / 20' 1"	6.33 / 20' 9"	6.07 / 19' 11"
E Max. cutting height	m / ft in	8.78 / 28' 10"	8.99 / 29' 6"	8.57 / 28' 1"

## Forces

without quick coupler		1	2	3
Stick digging force (ISO 6015)	kN / lbf	101 / 22,710	91 / 20,460	82 / 18,430
Bucket digging force (ISO 6015)	kN / lbf	135 / 30,350	135 / 30,350	135 / 30,350
Stick digging force (SAE J1179)	kN / lbf	96 / 21,580	87 / 19,560	79 / 17,760
Bucket digging force (SAE J1179)	kN / lbf	118 / 26,530	118 / 26,530	118 / 26,530

## Operating weight and ground pressure

The operating weight includes the basic machine with counterweight 3.1t / 6,830 lb, mono boom 5.20 m / 17'1", stick 3.05 m / 10' and bucket 1.00 m<sup>3</sup> / 1.31 yd<sup>3</sup> (685 kg / 1,510 lb).

Undercarriage		LC		
Pad width	mm / in	600 / 24"	750 / 30"	900 / 35"
Weight	kg / lb	19,650 / 43,320	20,050 / 44,200	20,450 / 45,090
Ground pressure	kg/cm <sup>2</sup> / psi	0.45 / 6.4	0.37 / 5.3	0.31 / 4.4

Undercarriage		LC with blade	
Pad width	mm / in	600 / 24"	750 / 30"
Weight	kg / lb	21,250 / 46,850	21,650 / 47,730
Ground pressure	kg/cm <sup>2</sup> / psi	0.49 / 7.0	0.40 / 5.7



**Buckets** Machine stability per ISO 10567\* (75% of tipping capacity)

	Cutting width	Capacity ISO 7461	Weight <sup>3)</sup>	Weight <sup>4)</sup>	LC undercarriage (with track pads 750 mm / 30")						LC undercarriage with blade (with track pads 750 mm / 30")					
					Stick length (m / ft in)						Stick length (m / ft in)					
					without quick coupler			with quick coupler			without quick coupler			with quick coupler		
					2.25 7'5"	2.65 8'8"	3.05 10'	2.25 7'5"	2.65 8'8"	3.05 10'	2.25 7'5"	2.65 8'8"	3.05 10'	2.25 7'5"	2.65 8'8"	3.05 10'
STD <sup>1)</sup>	650	0.55	480	515	▲	▲	▲	▲	▲	▲	▲	▲	▲	▲	▲	▲
	2'2"	0.72	1,060	1,140	▲	▲	▲	▲	▲	▲	▲	▲	▲	▲	▲	▲
	850	0.60	520	550	▲	▲	▲	▲	▲	▲	▲	▲	▲	▲	▲	▲
	2'9"	0.78	1,150	1,210	▲	▲	▲	▲	▲	▲	▲	▲	▲	▲	▲	▲
	1,050	0.80	600	635	▲	▲	▲	▲	▲	▲	▲	▲	▲	▲	▲	▲
	3'5"	1.05	1,320	1,400	▲	▲	▲	▲	▲	▲	▲	▲	▲	▲	▲	▲
	1,250	1.00	685	715	▲	▲	▲	▲	▲	▲	▲	▲	▲	▲	▲	▲
4'1"	1.31	1,510	1,580	▲	▲	▲	▲	▲	▲	▲	▲	▲	▲	▲	▲	
1,400	1.15	755	785	▲	■	■	▲	▲	▲	▲	▲	▲	▲	■	■	
4'7"	1.50	1,660	1,730	▲	■	■	▲	▲	▲	▲	▲	▲	▲	■	■	
HD <sup>2)</sup>	650	0.55	545	575	▲	▲	▲	▲	▲	▲	▲	▲	▲	▲	▲	▲
	2'2"	0.72	1,200	1,270	▲	▲	▲	▲	▲	▲	▲	▲	▲	▲	▲	▲
	850	0.60	585	615	▲	▲	▲	▲	▲	▲	▲	▲	▲	▲	▲	▲
	2'9"	0.78	1,290	1,360	▲	▲	▲	▲	▲	▲	▲	▲	▲	▲	▲	▲
	1,050	0.80	675	705	▲	▲	▲	▲	▲	▲	▲	▲	▲	▲	▲	▲
	3'5"	1.05	1,490	1,550	▲	▲	▲	▲	▲	▲	▲	▲	▲	▲	▲	▲
	1,250	1.00	770	800	▲	▲	▲	▲	▲	▲	▲	▲	▲	▲	▲	▲
4'1"	1.31	1,700	1,760	▲	▲	▲	▲	▲	▲	▲	▲	▲	▲	▲	▲	
1,400	1.15	850	880	▲	■	▲	■	▲	▲	■	▲	▲	■	■	■	
4'7"	1.50	1,870	1,940	▲	■	▲	■	▲	▲	■	▲	▲	■	■	■	

\* Indicated loads are based on ISO 10567, at maximum reach, and may be swung 360° on firm and even ground

<sup>1)</sup> Standard bucket with teeth Z 35

<sup>2)</sup> HD bucket with teeth Z 35

<sup>3)</sup> Bucket for direct mounting

<sup>4)</sup> Bucket for mounting to quick coupler

Other buckets available upon request

Max. material weight ▲ = ≤ 2.0 t/m<sup>3</sup> / 3,400 lb/yd<sup>3</sup>, ■ = ≤ 1.8 t/m<sup>3</sup> / 3,000 lb/yd<sup>3</sup>, ▲ = ≤ 1.65 t/m<sup>3</sup> / 2,800 lb/yd<sup>3</sup>

# Lift capacities

with mono boom 5.20 m / 17'1", counterweight 3.1 t / 6,830 lb and track pads 750 mm / 30"

## Stick 2.25 m / 7'5"

Under-carriage	3.0 m 10 ft		4.5 m 15 ft		6.0 m 20 ft		7.5 m 25 ft		m ft in
7.5 m t									4,2* 4,2* 4,7
25 ft lb									9,5* 9,5* 15'
6.0 m t					4,2 4,7*				3,7* 3,7* 6,2
20 ft lb					8,2* 8,2*				8,2* 8,2* 20'
4.5 m t			6,4 6,9*		4,1 6,0*				3,2 3,5* 7,0
15 ft lb			13,9 15,0*		8,9 13,1*				7,2 7,8* 22'10"
3.0 m t			6,0 8,5*		4,0 5,9				2,9 3,6* 7,4
10 ft lb			13,0 18,2*		8,5 12,7				6,4 7,9* 24'4"
1.5 m t			5,6 8,9		3,8 5,7	2,8 4,0*			2,8 3,8* 7,5
5 ft lb			12,1 19,1		8,2 12,3				6,1 8,4* 24'8"
0 m t			5,4 8,6		3,7 5,6				2,8 4,2 7,3
0 ft lb			11,7 18,6		7,9 12,0				6,2 9,3 23'11"
-1.5 m t	10,2* 10,2*		5,4 8,6		3,6 5,5				3,1 4,7 6,7
-5 ft lb	22,0 23,3*		11,6 18,5		7,8 11,9				6,9 10,4 22'1"
-3.0 m t	10,5 10,8*		5,5 7,9*						4,0 5,7* 5,7
-10 ft lb	22,4 23,3*		11,9 17,1*						8,9 12,6* 18'7"
-4.5 m t									
-15 ft lb									

## Stick 2.65 m / 8'8"

Under-carriage	3.0 m 10 ft		4.5 m 15 ft		6.0 m 20 ft		7.5 m 25 ft		m ft in
7.5 m t									3,4* 3,4* 5,3
25 ft lb									7,6* 7,6* 17'
6.0 m t					4,2 5,1*				3,0* 3,0* 6,6
20 ft lb					9,1 10,4*				6,7* 6,7* 21'6"
4.5 m t					4,1 5,6*				2,9* 2,9* 7,4
15 ft lb					8,9 12,3*				6,4* 6,4* 24'2"
3.0 m t			6,1 7,9*		4,0 5,9	2,8 4,2			2,6 2,9* 7,8
10 ft lb			13,1 17,1*		8,5 12,7	6,0 9,0			5,8 6,5* 25'7"
1.5 m t			5,6 8,9		3,8 5,7	2,7 4,1			2,5 3,1* 7,9
5 ft lb			12,1 19,1		8,1 12,2	5,9 8,8			5,6 6,8* 25'11"
0 m t			5,4 8,6		3,6 5,5	2,7 4,0			2,6 3,5* 7,7
0 ft lb			12,5* 12,5*		11,6 18,5	7,8 11,9	5,8 8,6		5,7 7,6* 25'2"
-1.5 m t	9,4* 9,4*		5,3 8,5		3,6 5,5				2,8 4,1* 7,2
-5 ft lb	21,4* 21,4*		11,4 18,3		7,7 11,8				6,3 9,1* 23'5"
-3.0 m t	10,2 11,8*		5,4 8,4*		3,6 5,5				3,5 5,3 6,2
-10 ft lb	22,0 25,5*		11,6 18,2*		7,9 12,0				7,7 11,8 20'2"
-4.5 m t									5,3* 5,3* 4,4
-15 ft lb									

Height Can be slewed through 360° In longitudinal position of undercarriage Max. reach \* Limited by hydr. capacity

The load values are quoted in tons (t) / lb x 1,000 at stick end (without bucket), and may be swung 360° on firm and even ground. Adjacent values are valid for the undercarriage when in the longitudinal position. Capacities are valid for 750 mm / 30" wide track pads. Indicated loads are based on ISO 10567 standard and do not exceed 75% of tipping or 87% of hydraulic capacity (indicated via \*). Without bucket cylinder, link and lever the lift capacities will increase by 285 kg / 628 lb. Lifting capacity of the excavator is limited by machine stability and hydraulic capacity. Determine maximum load lift from load lift chart displayed in the operator's cab or from load lift chart detailed in the operator's manual supplied with the machine.

### Stick 3.05 m / 10'

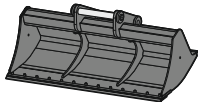
Under-carriage	3.0 m 10 ft		4.5 m 15 ft		6.0 m 20 ft		7.5 m 25 ft		m		
	ft	in	ft	in	ft	in	ft	in	ft	in	
7.5 m t									2.7*	2.7*	5.6
25 ft lb											
6.0 m t					4.3	4.3*			2.5*	2.5*	6.8
20 ft lb					9.0*	9.0*			5.5*	5.5*	22'2"
4.5 m t					4.2	5.3*	2.8*	2.8*	2.4*	2.4*	7.6
15 ft lb					9.0	11.5*			5.4*	5.4*	24'10"
3.0 m t	11.2*	11.2*	6.1	7.4*	4.0	5.9	2.8	4.2	2.5*	2.5*	8.0
10 ft lb	23.9*	23.9*	13.3	16.0*	8.6	12.8	6.1	8.8*	5.6*	5.6*	26'2"
1.5 m t	6.8*	6.8*	5.7	8.9	3.8	5.7	2.7	4.1	2.4	2.7*	8.1
5 ft lb	16.1*	16.1*	12.2	19.2	8.1	12.3	5.8	8.7	5.3	6.0*	26'6"
0 m t	7.1*	7.1*	5.4	8.6	3.6	5.5	2.6	4.0	2.5	3.1*	7.9
0 ft lb	16.3*	16.3*	11.5	18.5	7.7	11.9	5.7	8.6	5.4	6.9*	25'10"
-1.5 m t	9.9*	9.9*	5.2	8.5	3.5	5.4			2.7	3.9*	7.4
-5 ft lb	21.3	22.5*	11.3	18.2	7.6	11.7			5.9	8.5*	24'1"
-3.0 m t	10.1	12.7*	5.3	8.5	3.5	5.4			3.2	4.9	6.4
-10 ft lb	21.6	27.4*	11.4	18.3	7.6	11.7			7.2	11.0	21'
-4.5 m t	9.0*	9.0*	5.5	6.3*					4.9	5.6*	4.9
-15 ft lb	19.2*	19.2*	11.9	13.2*					11.0	12.2*	15'10"
7.5 m t									2.7*	2.7*	5.6
25 ft lb											
6.0 m t					4.3*	4.3*			2.5*	2.5*	6.8
20 ft lb					9.0*	9.0*			5.5*	5.5*	22'2"
4.5 m t					4.5	5.3*	2.8*	2.8*	2.4*	2.4*	7.6
15 ft lb					9.7	11.5*			5.4*	5.4*	24'10"
3.0 m t	11.2*	11.2*	6.6	7.4*	4.3	5.9*	3.0	4.2	2.5*	2.5*	8.0
10 ft lb	23.9*	23.9*	14.2	16.0*	9.2	12.9*	6.6	8.8*	5.6*	5.6*	26'2"
1.5 m t	6.8*	6.8*	6.1	9.0*	4.1	5.8	2.9	4.1	2.6	2.7*	8.1
5 ft lb	16.1*	16.1*	13.2	19.4*	8.8	12.5	6.3	8.9	5.8	6.0*	26'6"
0 m t	7.1*	7.1*	5.8	8.7	3.9	5.6	2.9	4.0	2.7	3.1*	7.9
0 ft lb	16.3*	16.3*	12.5	18.8	8.4	12.1	6.2	8.7	5.9	6.9*	25'10"
-1.5 m t	9.9*	9.9*	5.7	8.6	3.8	5.5			2.9	3.9*	7.4
-5 ft lb	22.5*	22.5*	12.2	18.5	8.2	11.9			6.4	8.5*	24'1"
-3.0 m t	10.9	12.7*	5.7	8.6	3.8	5.5			3.5	5.0	6.4
-10 ft lb	23.3	27.4*	12.3	18.6	8.3	12.0			7.8	11.2	21'
-4.5 m t	9.0*	9.0*	5.9	6.3*					5.2	5.6*	4.9
-15 ft lb	19.2*	19.2*	12.8	13.2*					11.9	12.2*	15'10"
7.5 m t									2.7*	2.7*	5.6
25 ft lb											
6.0 m t					4.3*	4.3*			2.5*	2.5*	6.8
20 ft lb					9.0*	9.0*			5.5*	5.5*	22'2"
4.5 m t					4.7	5.3*	2.8*	2.8*	2.4*	2.4*	7.6
15 ft lb					10.2	11.5*			5.4*	5.4*	24'10"
3.0 m t	11.2*	11.2*	7.0	7.4*	4.5	5.9*	3.2	4.4*	2.5*	2.5*	8.0
10 ft lb	23.9*	23.9*	15.1	16.0*	9.8	12.9*	6.9	8.8*	5.6*	5.6*	26'2"
1.5 m t	6.8*	6.8*	6.5	9.0*	4.3	6.7*	3.1	5.5*	2.7*	2.7*	8.1
5 ft lb	16.1*	16.1*	14.0	19.4*	9.3	14.5*	6.7	10.9*	6.0*	6.0*	26'6"
0 m t	7.1*	7.1*	6.2	9.9*	4.1	7.2*	3.0	5.5*	2.8	3.1*	7.9
0 ft lb	16.3*	16.3*	13.3	21.4*	8.9	15.6*	6.5	10.6*	6.2	6.9*	25'10"
-1.5 m t	9.9*	9.9*	6.1	9.8*	4.0	7.2*			3.1	3.9*	7.4
-5 ft lb	22.5*	22.5*	13.1	21.3*	8.7	15.6*			6.8	8.5*	24'1"
-3.0 m t	11.8	12.7*	6.1	8.9*	4.1	6.4*			3.7	5.5*	6.4
-10 ft lb	25.2	27.4*	13.1	19.1*	8.8	13.7*			8.3	12.3*	21'
-4.5 m t	9.0*	9.0*	6.3	6.3*					5.6	5.6*	4.9
-15 ft lb	19.2*	19.2*	13.2*	13.2*					12.2*	12.2*	15'10"

 Height 
  Can be slewed through 360° 
  In longitudinal position of undercarriage 
  Max. reach \* Limited by hydr. capacity

The load values are quoted in tons (t)/lb x 1,000 at stick end (without bucket), and may be swung 360° on firm and even ground. Adjacent values are valid for the undercarriage when in the longitudinal position. Capacities are valid for 750 mm / 30" wide track pads. Indicated loads are based on ISO 10567 standard and do not exceed 75% of tipping or 87% of hydraulic capacity (indicated via \*). Without bucket cylinder, link and lever the lift capacities will increase by 285 kg / 628 lb. Lifting capacity of the excavator is limited by machine stability and hydraulic capacity.

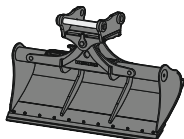
Determine maximum load lift from load lift chart displayed in the operator's cab or from load lift chart detailed in the operator's manual supplied with the machine.

# Attachments



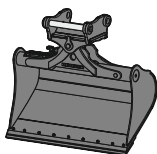
## Rigid ditch cleaning bucket

GRL 03, for direct mounting								
Cutting width	mm / in	1,500 / 59"	2,000 / 79"	2,400 / 95"				
Capacity	m <sup>3</sup> / yd <sup>3</sup>	0.50 / 0.65	0.70 / 0.92	0.85 / 1.11				
Weight	kg / lb	400 / 880	506 / 1,120	586 / 1,290				
GRL 03, for mounting to quick coupler SWA 48								
Cutting width	mm / in	1,500 / 59"	1,500 / 59"	2,000 / 79"	2,000 / 79"	2,000 / 79"	2,400 / 95"	2,400 / 95"
Capacity	m <sup>3</sup> / yd <sup>3</sup>	0.50 / 0.65	0.95 / 1.24	0.70 / 0.92	1.20 / 1.57	1.25 / 1.63	0.85 / 1.11	1.15 / 1.50
Weight	kg / lb	430 / 950	560 / 1,240	400 / 880	640 / 1,410	600 / 1,320	600 / 1,320	650 / 1,430



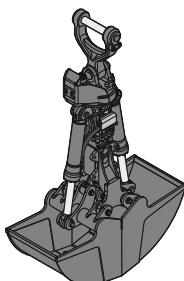
## Tiltable ditch cleaning bucket

GRL 90, 2 x 50° tiltable, for direct mounting								
Cutting width	mm / in	1,600 / 63"	1,600 / 63"	2,000 / 79"	2,000 / 79"	2,000 / 79"	2,200 / 87"	2,400 / 95"
Capacity	m <sup>3</sup> / yd <sup>3</sup>	0.55 / 0.72	0.80 / 1.05	0.50 / 0.65	0.70 / 0.92	1.00 / 1.31	0.80 / 1.05	0.85 / 1.11
Weight	kg / lb	650 / 1,430	790 / 1,740	610 / 1,350	800 / 1,760	870 / 1,920	800 / 1,760	870 / 1,920
GRL 90, 2 x 50° tiltable, for mounting to quick coupler SWA 48								
Cutting width	mm / in	1,600 / 63"	1,600 / 63"	2,000 / 79"	2,000 / 79"	2,000 / 79"	2,200 / 87"	2,200 / 87"
Capacity	m <sup>3</sup> / yd <sup>3</sup>	0.55 / 0.72	0.80 / 1.05	0.50 / 0.65	0.70 / 0.92	1.00 / 1.31	0.80 / 1.05	1.15 / 1.50
Weight	kg / lb	730 / 1,610	850 / 1,870	740 / 1,630	870 / 1,920	870 / 1,920	870 / 1,920	930 / 2,050



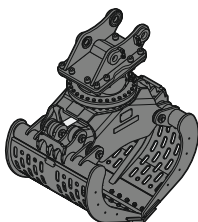
## Tilt bucket

SL 90, 2 x 50° tiltable, for direct mounting				
Cutting width	mm / in	1,500 / 59"	1,600 / 63"	1,600 / 63"
Capacity	m <sup>3</sup> / yd <sup>3</sup>	0.60 / 0.78	0.80 / 1.05	1.00 / 1.31
Weight	kg / lb	680 / 1,500	750 / 1,650	810 / 1,790
SL 90, 2 x 50° tiltable, for mounting to quick coupler SWA 48				
Cutting width	mm / in	1,500 / 59"	1,600 / 63"	1,600 / 63"
Capacity	m <sup>3</sup> / yd <sup>3</sup>	0.60 / 0.78	0.80 / 1.05	0.80 / 1.05
Weight	kg / lb	680 / 1,500	820 / 1,810	950 / 2,090
HD version				X



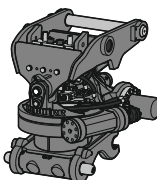
## Clamshell grab

GMZ 24, clamshell buckets, for mounting to quick coupler SWA 48			
Cutting width	mm / in	600 / 24"	800 / 31"
Capacity	m <sup>3</sup> / yd <sup>3</sup>	0.34 / 0.44	0.46 / 0.60
Weight	kg / lb	890 / 1,960	970 / 2,140
			1,040 / 2,290



## Sorting grab

		ribbed		perforated		stone tong
SG 25B, for mounting to quick coupler SWA 48						
Cutting width	mm / in	800 / 32"	1,000 / 39"	800 / 32"	1,000 / 39"	1,200 / 47"
Capacity	m <sup>3</sup> / yd <sup>3</sup>	0.50 / 0.65	0.65 / 0.85	0.55 / 0.72	0.75 / 0.98	0.90 / 1.18
Weight	kg / lb	1,210 / 2,670	1,295 / 2,860	1,170 / 2,580	1,230 / 2,710	1,325 / 2,920
						1,170 / 2,580



## Tiltrotator

TR 25, for mounting to quick coupler SWA 48	
Weight	kg / lb
Rotation	360°
Tilt	2 x 50°



# Serial equipment

## Undercarriage

Lashing eyes  
Sprocket with dirt ejector  
Track and carrier rollers, sealed and lifetime-lubricated

## Uppercarriage

Anti-skid surfaces  
Centralized lubrication system (automatic)  
Engine hood with gas spring opening  
Filters accessible from ground level  
Front right rearview mirrors  
Handrails  
Hydraulic oil level, visible from ground level  
Lockable fuel tank cap  
Lockable service doors  
Lockable storage box  
Main switch, manual, lockable  
Protection grid on radiator fan  
Sound insulation  
Swing drive gearbox oil level, visible from the cab  
Swing-out radiators  
Windshield washer fluid tank

## Hydraulic system

Filter with integrated fine filters  
Hydraulic pressure measuring ports  
Hydraulic tank shut-off valve  
Liebherr Synchron Comfort System (LSC)  
Magnetic rod  
Pressure accumulator for controlled lowering of equipment with engine turned off

## Engine

Air filter with automatic dust ejector  
Automatic engine idling / speed increase, controlled via joystick sensors  
Common-Rail injection system  
Exhaust gas after-treatment system - DOC + SCR  
Fixed geometry turbocharger  
Fuel fine filter  
Fuel pre-filter and water separator  
Fuel priming pump  
Intercooler  
Power Pack US EPA Tier 4 Final  
Stepless adjustable engine speed

## Cab

9" multifunction color touchscreen  
Air conditioning, automatic, tri-zone, controlled via display  
Armrests adjustable in length, height and inclination  
Bottle holder  
Cab air filters housing, accessible from ground level  
Cab door sliding windows  
Coat hook  
DEF consumption on touchscreen  
DEF level on touchscreen  
Electric socket in cabin (12V)  
Electric socket in cabin (24V)  
Emergency hammer  
Fuel consumption on touchscreen  
Fuel level on touchscreen  
Interior lighting  
Laminated right hand side window  
LiDAT Plus (Liebherr data transfer system)\*  
Mechanical hour meter, visible from ground level  
Rain hood over front window opening  
Rearview mirror  
Rear view monitoring camera  
Rear window emergency exit  
Roll-down sun blinds for windshield and roof window  
ROPS safety cab structure (ISO 12117-2)  
Rubber floor mat, fixed on floor and removable  
Shortcut button on joystick configurable  
Storage nets  
Storage spaces  
Tilttable console left  
Tinted windows  
Visco-elastic damping  
Windscreen wiper and washer  
Work mode selector

## Equipment

Boom cylinders regeneration  
Pipe fracture safety valve for stick cylinder  
Pipe fracture safety valves for boom cylinders  
SAE split flanges on high pressure lines  
Stick cylinder regeneration

\* optionally extendable after one year

# Equipment standard / option

## Undercarriage

Chain guide 1 piece	●
Chain guide 3 pieces	+
Dozer and stabilizer blade 2,850 mm / 9'4"	+
Dozer and stabilizer blade 3,000 mm / 9'10"	+
Reinforced cover and base plate for undercarriage center section	+
Rubber track pads 600 mm / 24"	+
Special painting	+
Standard cover plate for undercarriage center section	●
Steps	+
Steps wide	●
Track pads triple grouser 600 mm / 24" / 900 mm / 35"	+
Track pads triple grouser 750 mm / 30"	●
Tracks, sealed and greased	●
Undercarriage LC	●
Undercarriage storage compartment	+

## Uppercarriage

Air pre-filter with cyclonical dust trap	+
Counterweight standard 3.1t / 6,830 lb	●
Electric socket on uppercarriage (24 V)	+
Extended tool set including tool box	+
Flashing beacon on uppercarriage, rear, LED, 1 piece	+
Fuel anti-theft protection	+
Headlight on uppercarriage, lateral right, LED+, 1 piece	+ )
Headlights on uppercarriage, front, halogen, 2 pieces, protections included	● )
Headlights on uppercarriage, front, LED+, 2 pieces, protections included	+ )
Headlights on uppercarriage, rear, LED+, 2 pieces	+ )
Pre-heating system for fuel	+
Reflective warning stickers	+
Reversible fan drive	+
Skyview 360°	+
Special painting	+
Tank refilling pump fuel	+
Tool set including storage case	●

## Hydraulic system

Bypass filter for hydraulic oil	+
Liebherr hydraulic oil	●
Liebherr hydraulic oil, adapted for extreme climate conditions	+
Liebherr hydraulic oil, biodegradable	+

## Engine

Automatic engine shutdown after idling	+
--	---



## Cab

3" seat belt with retractor, orange color	●
4-points seat belt	+
Acoustic travel alarm deactivatable	+
Attachment continuous operation system	+
Auxiliary heater programmable	+
Bottom windscreen wiper	+
Cool box (12V)	+
Dark tinted windows	+
Electronic immobilizer	+
Emergency stop in cab	+
FGPS front guard	+
Filter for hydraulic hammer return flow	+
Fire extinguisher	+
First-aid box	+
Flashing beacon on cabin, LED, 1 piece	+
Footrest	+
FOPS top guard	+
Handrests elevated for joysticks	+
Headlights on cab, front, halogen, 2 pieces	● <sup>1)</sup>
Headlights on cab, front, LED+, 2 pieces	+ <sup>1)</sup>
Headlights on cab roof, front, LED+, 2 pieces	+ <sup>1)</sup>
High pressure circuit switchable on pedals or mini-joystick	+
High pressure circuit with Tool Control (20 attachment adjustments on display)	+
Impact resistant one-piece windscreen	+
Impact resistant roof window	+
Laminated roof window	●
Lightbar on cabin	+
Medium pressure circuit	+
Mini-joysticks proportional	●
Movement restriction for stick	+
Operator seat Comfort	●
Operator seat Premium	+
Overload warning system	+
Preparation for machine guidance system	+
Radio Comfort	+
Radio pre-installation	●
Retractable laminated two-piece windscreen	●
Right hand side view monitoring camera	●
Roof sun shield	+
Roof window wiper	+
Special painting	+
Sun visor	+
Switch between high pressure and bucket cylinder controls	+
Windscreen bottom protection grid	+



## Equipment

Bucket cylinder rod protection	+
Centralized lubrication extended for connecting link	+
Centralized lubrication extended for quick coupler	+
Grapple hydraulic lines (bucket cylinder inactive)	+
Headlight guards on boom	+
Headlights on boom, halogen, 2 pieces	● <sup>1)</sup>
Headlights on boom, LED+, 2 pieces	+ <sup>1)</sup>
Headlights on stick, right and left, LED+, 2 pieces, protections included	+ <sup>1)</sup>
Leak oil line for attachment	+
Liebherr bucket range	+
Liebherr tooth system	+
Load holding valve for bucket cylinder	+
Mono boom 5.20 m / 17'1"	●
Quick coupler SWA 48 hydraulic	+
Quick coupler SWA 48 mechanical	+
Security for hoist cylinders	+
Solidlink electric signal plug	+
Solidlink for quick coupler SWA 48 hydraulic	+
Special painting	+
Stick 2.25 m / 7'5"	+
Stick 2.65 m / 8'8"	+
Stick 3.05 m / 10'	+
Stick bottom protection	+
Tool Management	+
Working envelope height limitation	+

● = Standard, + = Option

<sup>1)</sup> Equipment not individually available, but only as predefined packages

Non-exhaustive list, please contact us for further information.

Options and / or special equipment, supplied by vendors other than Liebherr, are only to be installed with the knowledge and approval of Liebherr in order to retain warranty.

# The Liebherr Group



## Global and independent: more than 70 years of success

Liebherr was founded in 1949. With the development of the world's first mobile tower crane, Hans Liebherr laid the foundations of a successful family business which today comprises more than 140 companies on all continent and employs nearly 51,000 people. The parent company of the Group is Liebherr-International AG in Bulle (Switzerland), whose associates are exclusively members of the Liebherr family.

## Technology leadership and pioneering spirit

Liebherr regards itself as a pioneer. This spirit has enabled the company to make a decisive contribution to the technological history of many industries. Today, employees around the world still share the courage of the company founder to take new paths. They are all united by a passion for technology and fascinating products and the determination to perform outstanding work for their customers.

## Widely diversified product portfolio

Not only is Liebherr one of the biggest construction equipment manufacturers in the world, it also provides high-quality, user-oriented products and services in a wide range of other areas. The product portfolio includes the segments earthmoving, material handling technology, deep foundation machines, mining, mobile and crawler cranes, tower cranes, concrete technology, maritime cranes, aerospace and transportation systems, gear technology and automation systems, refrigeration and freezing, components and hotels.

## Customized solutions and maximum customer benefit

Liebherr solutions are characterized by maximum precision, outstanding implementation and exceptional longevity. Its mastery of key technologies enables the company to offer its customers customized solutions. For Liebherr, customer focus does not end with the product; it also encompasses a wide range of services that make a real difference.

[www.liebherr.us](http://www.liebherr.us)

## WARNING

Breathing diesel engine exhaust exposes you to chemicals known to the State of California to cause cancer and birth defects or other reproductive harm.

- Always start and operate the engine in a well-ventilated area.
- If in an enclosed area, vent the exhaust to the outside.
- Do not modify or tamper with exhaust system.
- Do not idle the engine except as necessary.

For more information go to [www.P65warnings.ca.gov/diesel](http://www.P65warnings.ca.gov/diesel).

## WARNING

This product can expose you to chemicals including lead and lead compounds, which are known to the State of California to cause cancer and birth defects or other reproductive harm.

For more information go to [www.P65warnings.ca.gov](http://www.P65warnings.ca.gov).

## Liebherr USA, Co.

Construction Equipment Division • 4800 Chestnut Avenue • Newport News, VA 23607, USA • Phone +1 (757) 240 4250  
[construction.usa@liebherr.com](mailto:construction.usa@liebherr.com) • [www.liebherr.us](http://www.liebherr.us) • [www.facebook.com/LiebherrConstruction](https://www.facebook.com/LiebherrConstruction)