

---

# Beverage cooler your top seller.

---

Discover the benefits of our  
merchandising coolers.

# LIEBHERR

Beverages



Your best sales promotion

## Our stage for your drinks.

Liebherr merchandising coolers not only quench a thirst for chilled beverages, they also create the right mood for a cold drink. Besides design and handling, they excel in cooling performance, sustainability, and cost-effectiveness. Whether at events, in a restaurant or at the point of sale, a Liebherr merchandising cooler meets the most demanding of requirements at low operating costs. Discover how our extensive range can deliver your perfect product presentation.



### Benefits of the Liebherr Merchandising Cooler.

Over 60 years of experience make the difference:

- Optimal product presentation **maximises sales promotion**
- **Extremely long service life** due to Liebherr's renowned quality in every aspect of the product
- **Environmentally and financially sustainable** thanks to environmentally friendly refrigerant and a high level of energy efficiency
- **Individual branding and features** for greater branding, awareness and promotion
- **All-round support** from a professional service

**Economical, flexible and profitable – Liebherr merchandising coolers are your best sellers.**



Individualisation and branding

## From refreshment provider to advertiser.



Whether it's a realistic photographic representation of the product, an artistic motif, or an eye-catching company logo – beverage coolers with a striking design increase your brand awareness and your turnover. For this, Liebherr applies innovative printing processes and a high-quality finish.

#### Digital printing

Plastic-free, 180° or 360° print with high colour definition straight on the surface.

#### Glass door sticker

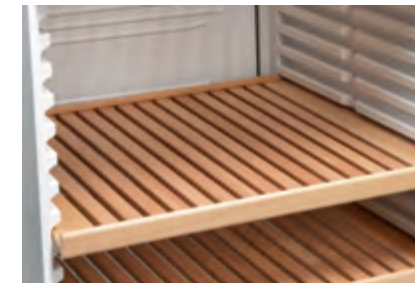
Permanent or removable sticker leaving no residue in an individual design.

#### 3D branding

Lenticular printing combined with lighting for an attractive 3D effect.

### Accessories for any need.

From the gravity feed shelf for bottles, to the perforated plate support and adjustable feet – the Liebherr merchandising cooler has what it takes to become the appliance of choice. Choose from a wide range of optional accessories and transform the merchandising cooler into your top seller.



#### Wooden shelf

Stable and secure storage on a beechwood shelf for a sleek and elegant look.



#### Perforated plate support

Extremely resilient support providing optimal stability even for smaller bottles and containers.



#### Scanner rails

Rails can be attached to the shelf for price tags, bar or QR codes or individual POS messages.



#### Adjustable feet and castors

Choose between castors or feet that are simple to fit making the appliance easy to transport and convenient for underneath cleaning.



#### Gravity feed shelf for bottles

Beverages are easy to access and always within reach; can be removed from telescopic rails for restocking.

Impressive product range

## Greater scope for your sales – in whatever form.

The wide range of merchandising coolers offers you the perfect solution for any requirements and applications. Whether it's a concealed, under-the-counter fridge, a eye-catching top seller in a retail environment, somewhere ultra-quiet for serving drinks in a restaurant or an easy-to-clean catering event appliance with individual branding – a Liebherr merchandising cooler maximises your potential sales.

### High standards come as standard in our appliances.

The combination of innovative technologies, durable materials and intelligent functions make Liebherr merchandising coolers top-performing, sustainable and economical appliances.



**Attractive light concept**  
Eye-catching and energy efficient: external light displays attract customers; dimmable side LED lighting columns illuminate the entire interior.



**Glass surfaces for great presentation**  
An enlarged glass area made of toughened safety glass allows a perfect clear view of the products helping you boost sales.



**Clever design**  
Ideal for any applications and needs – whether it's glass or solid doors, door handles or recessed grips, or hinges on the left or right side.



MRFeC 3501 147



FKUV 1663



FKDV 4523



FKDV 4213



MRFDV 4011 744



**Dynamic cooling system**  
Ensures quick and efficient cooling, a constant temperature distribution and minimises loss of cold air when door is opened.



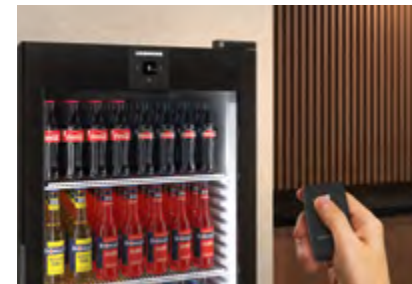
**Optimised features**  
Strong, secure, and flexible: improved close-meshed grid shelves can support up to 60 kg and keep bottles and containers stable.

The new appliance generation

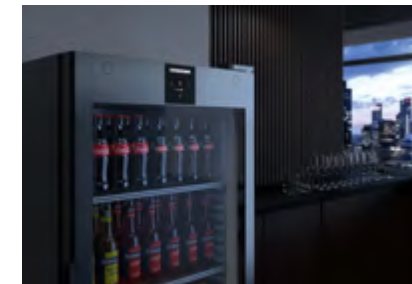
## Next level cooling.

In addition to proven features, the new generation of merchandising coolers offer innovative highlights for even greater efficiency and convenience.

MRFvg 4011



**Remote security**  
Electronic door lock is easy to operate via remote control, e.g. from the till – even for multiple appliances simultaneously.



**Save resources and money**  
**Eco-Mode** automatically increases the temperature during periods of low use, **EcoPlus** also switches off the light.



**Smart networking.**  
Liebherr **SmartMonitoring** continuously monitors and documents the temperature by sending alerts immediately in the event of temperature deviations.

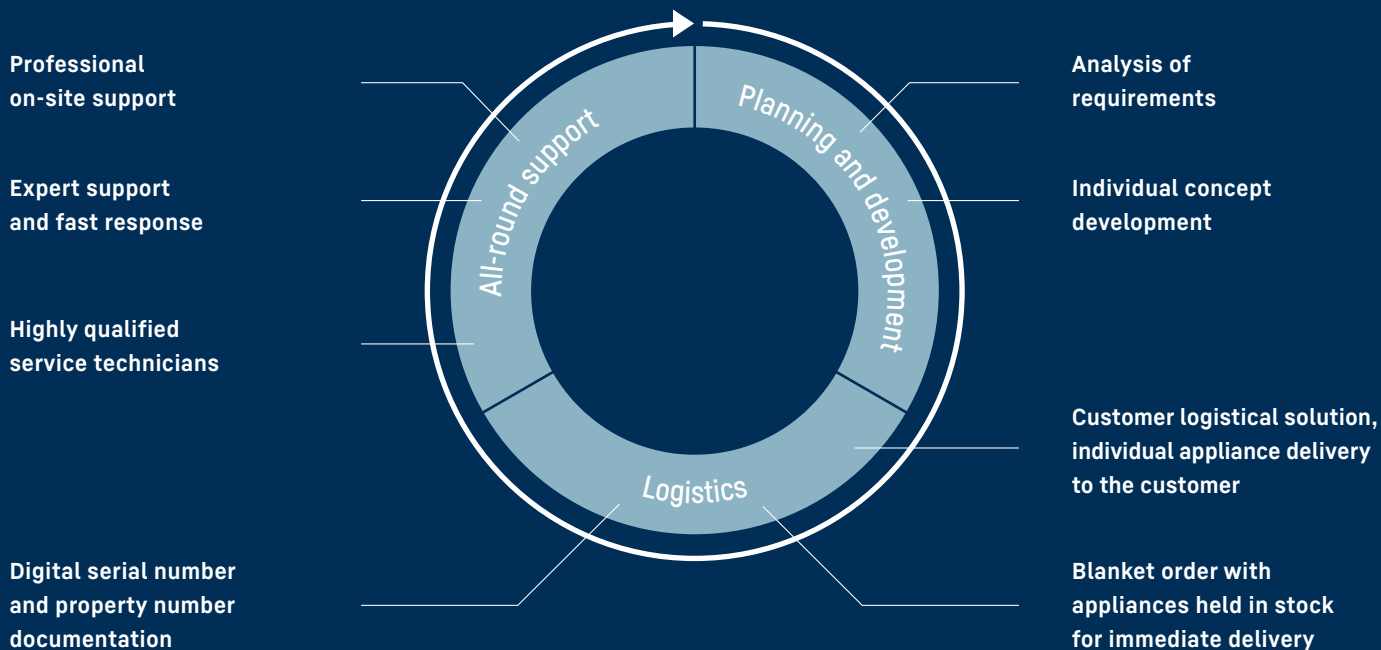
### The environment benefits when the power socket becomes a piggy bank.

High product quality and maximum energy efficiency guarantee sustainable and economical products:

- Dynamic cooling system for quick cooling
- Highly energy efficient and cost effective thanks to the modern cooling components
- Extremely durable
- Great durability due to functional parts with a service life of +15 years
- Minimal loss of cold air due to self-closing door

[home.liebherr.com/cooling-sustainably](http://home.liebherr.com/cooling-sustainably)

# Complete solution for your business.



More information about our beverage coolers can be found here:  
[home.liebherr.com/Beverages](https://home.liebherr.com/Beverages)

Or get in touch with your local Liebherr agent.



[home.liebherr.com/Beverages](https://home.liebherr.com/Beverages)