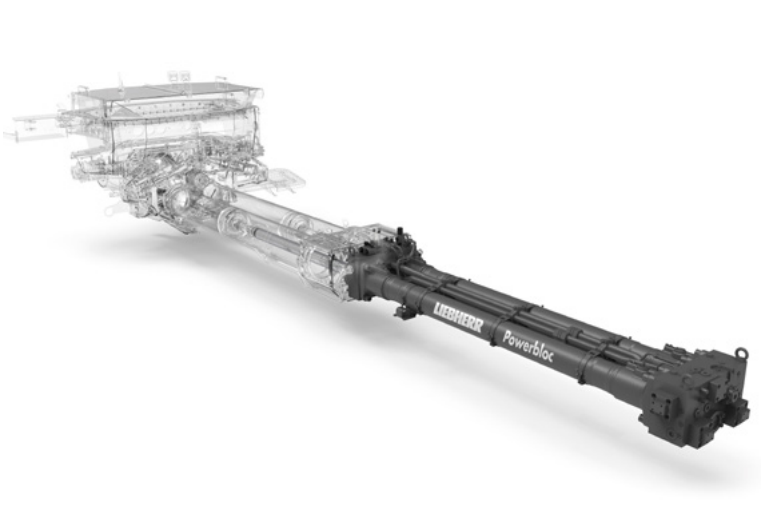
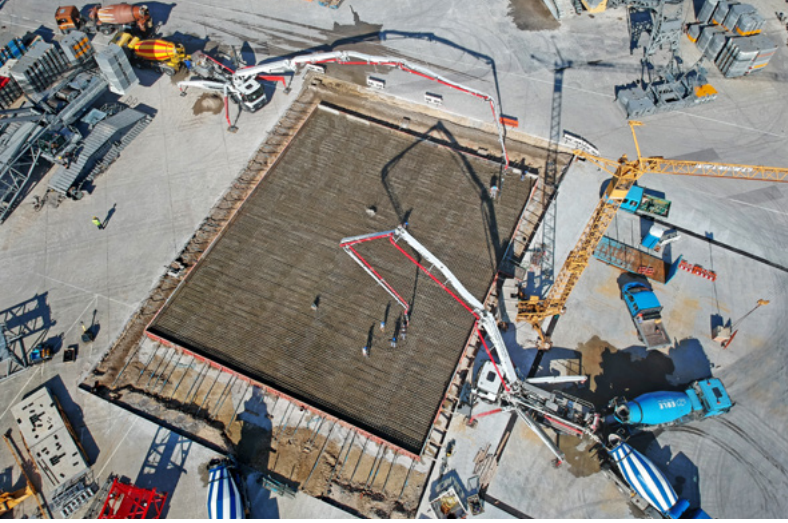

Successful in operation

Jobreport

LIEBHERR

Truck-mounted concrete pump 42 XXT





Situation

The high quality of all products is the key to the Liebherr Group's recipe for success and also a tangible factor for the success of its customers. This has top priority in the Liebherr family company. In order to meet this high standard at all times and to ensure the consistently excellent quality of the cranes, the Liebherr factory in Ehingen decided to build a high load-bearing test area for its mobile and crawler cranes.

Task

A total of around 750 m³ of concrete was needed here. Due to the high weight of the cranes, it was necessary to concrete a very massive base plate. The construction company Brotbeck took over this order in cooperation with machines from Betonpumpen-Union Ulm (BPU).

Solution

The concrete work on the base plate was completed within one working day using a Liebherr 42 M5 XXT truck-mounted concrete pump. Another Liebherr truck-mounted concrete pump, the 37 Z4 XXT, was also on site.

In the meantime, the 42 M5 XXT truck-mounted concrete pump has been successfully in use at BPU around Ulm for over a year. The truck-mounted concrete pump, which was presented for the first time at the Bauma 2019, has several decisive competitive advantages. It convinces with a total weight of less than 32 tonnes as well as the 5-section placing boom in multi-folding design. The proven XXT support was also used for this pump.

One of the main highlights of the new 42 M5 XXT truck-mounted concrete pump is the newly developed Liebherr-

Powerbloc drive unit. The advanced drive unit is characterised by the fact that all hydraulic switching and measuring elements have been completely integrated. This eliminates numerous hydraulic hoses as well as many other parts. The drive unit is therefore one of a kind in the concrete pump world. Special features of the new system are its robustness, high performance and quiet running.

Christian Klafszky, Managing Director of BPU Ulm, is completely convinced by the operating unit after around one and a half years of use on the construction site and confirms: „What I particularly like about this machine is the quiet and powerful operation of the pump unit. This is possible thanks to the new Powerbloc system“.

Furthermore, Liebherr has newly designed a highly efficient, semi-closed oil circuit, which supplies all drives powerfully and reliably with hydraulic energy. As a result, the oil volume could also be significantly reduced. This new Liebherr system combines the advantages of the proven open and closed circuits currently on the market, without their respective disadvantages.

In addition, the truck-mounted concrete pump impresses with the high Liebherr quality ‚Made in Germany‘ and the therefore resulting high quality demands on the machine. The pump also requires only minimal service effort. The construction of the truck-mounted concrete pump is designed for a long service life, enabling the customer to use it reliably and economically on site for many years with low operating costs.

Technical Data	42 M5 XXT
Vertical reach	41.2 m
Horizontal reach	37.2 m
Unfolding height	8.6 m
End hose length	4 m