

EN

FCC 280

www.liebherr.com

LIEBHERR

Port and transshipment solutions



Maximum lifting capacity
45 t (hook operation)
35 t (grab operation)



Maximum outreach
38 m

Technical data

Speeds

Hoisting/lowering	
Hoisting/lowering with empty hook	0 m/min - 40 m/min
Hoisting/lowering with 35t	0 m/min - 29 m/min
Hoisting/lowering with 45t	0 m/min - 23 m/min
Slewing	
Speed	0 rpm - 1.4 rpm
Range	360° unlimited
Luffing	
Luffing time (from 4 m - 38 m)	approx. 92 sec

Design conditions

Maximum admissible	
Ambient working temperature	-20°C to +45°C
Humidity maximum	93%
Maximum wind speed	
Working condition	20 m/sec
Parking condition	63 m/sec

Electric motor

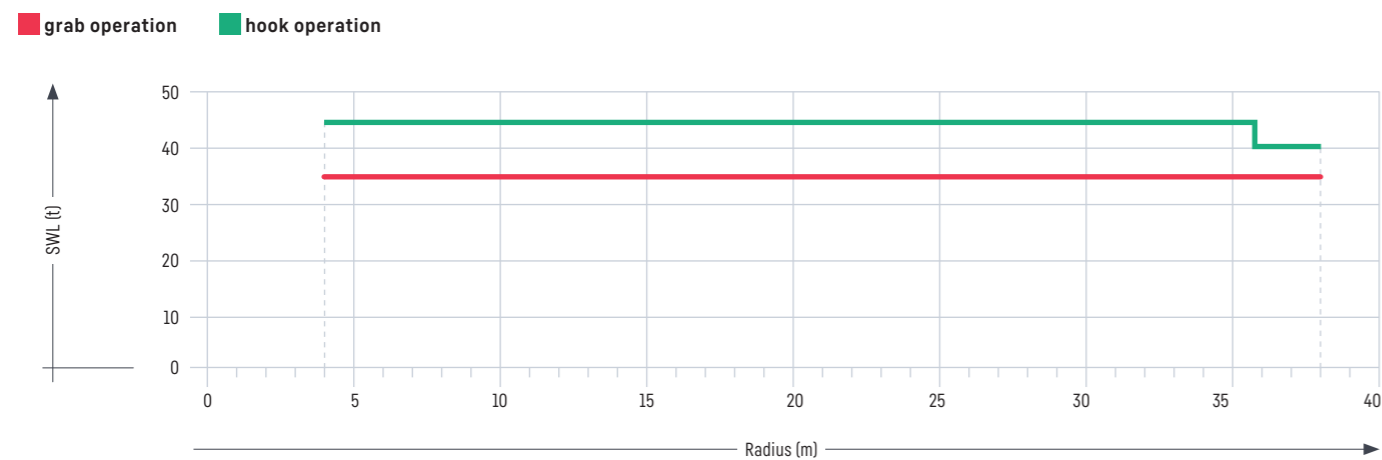
Type of motor	three phase squirrel cage
Class of protection	IP 55
Starting	star delta
Nominal output	295 kW (50 Hz) / 345 kW (60 Hz) S6 - 40% ED
Main power supply range	400 V (50 Hz) / 440 V (60 Hz)
Auxiliary power supply	230 V, 3 ph

Crane classification

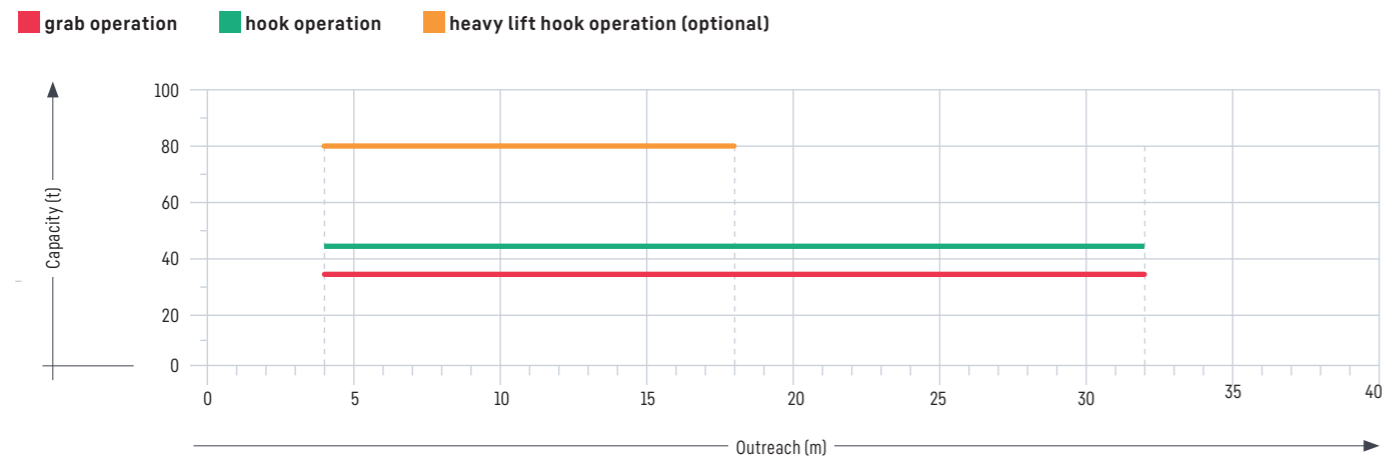
The maximum group classification according to FEM 1.001 (latest edition) relates to full load cycles and is as follows:

	≤ 45t	≤ 80t
The crane as a whole	A5 / Q2 / U5	A3 / Q2 / U2

Load diagram 38m



Load diagram 32m



General arrangement

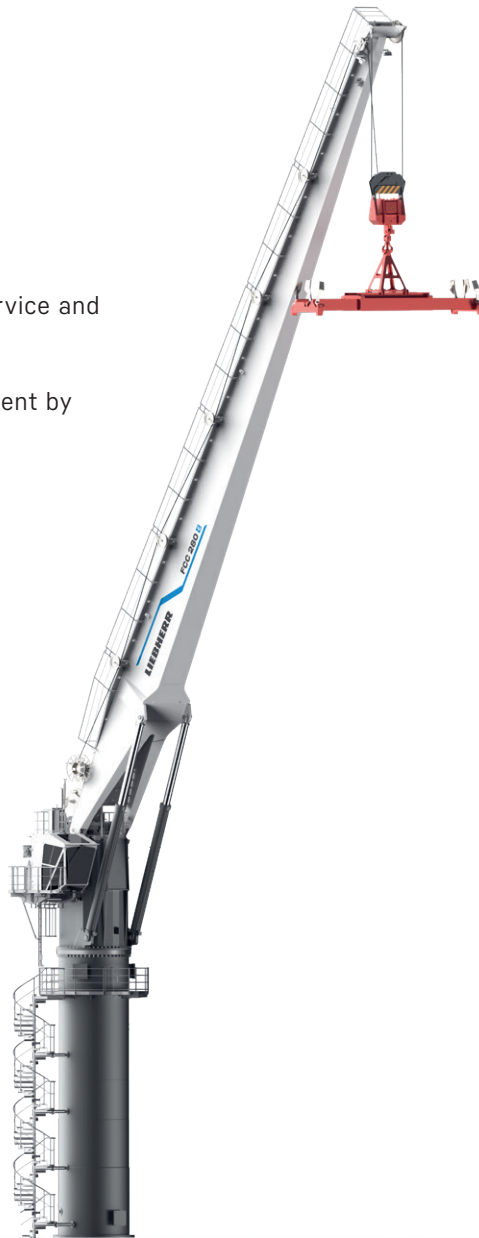


Advantages

- Precise and reliable crane control system Litronic - made by Liebherr
- Energy-efficient hydraulic drive
- Components tested and proven for extreme conditions and performance
- Long life hydraulic luffing cylinders (chrome-nickel plated) for reduced maintenance
- Ready for the use of automated assistance systems

Optional features

- Spacious 7m³ cabin
- Comfort ascent to crane operator cabin
- Heavy-lift configuration: 80t (hook operation)
- Additional platforms and boom walkway for service and maintenance purposes
- Intelligent automatic greasing systems
- Operational flexibility for special lifting equipment by installation of electrical cable drum



LiCAS

Liebherr cranes can be equipped with the Liebherr Collision Alert System (LiCAS). This additional assistance system sets new levels in operational safety during heavy-duty cargo handling. LiCAS supports the crane driver by permanently detecting the distances to other Liebherr cranes in reach and warns of potential unsafe conditions.

LiDAT smartApp

With LiDAT smartApp, it's possible to analyse your crane (operating and performance) data and get answers from it almost immediately. That leads to direct decisions. The ability to work faster gives operators a competitive edge they didn't have before. The data analytics helps to detect bottlenecks and to identify new opportunities.

LiSIM®

Liebherr simulator increases port safety and productivity by providing a cost-effective and highly efficient crane operator training solution. The development of this sophisticated training tool was prompted by Liebherr's extensive experience in crane operator training. Based on the original Litronic crane control system, LiSIM is the only realistic virtual solution available in the market for the training of the precise and innovative control system of Liebherr cranes.