

EN-US



LR 1130.1 unplugged

LR 1102.04.08
www.liebherr.com

LIEBHERR

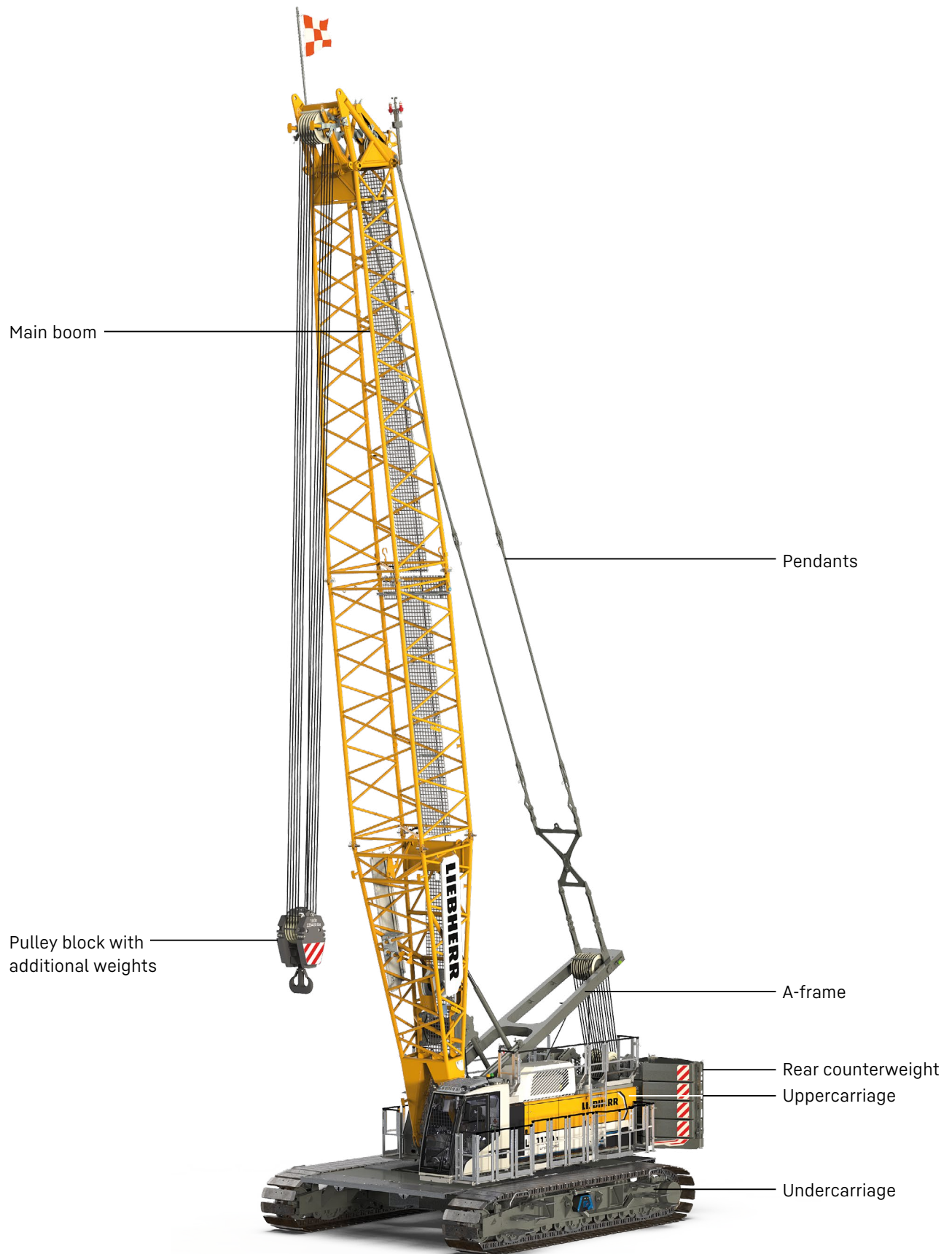
Crawler cranes

Concept and characteristics	3
Technical description	8
Dimensions	10
Transport dimensions and weights	11
Self-assembly system	14
Boom combinations	16
Main boom 2017.xx	18
Main boom 2017.xx	18
Luffing jib 1309.xx	20
Luffing jib 1309.xx	20
Luffing jib 1309.xx	20
Fixed jib 0806.xx	26
Fixed jib 0806.xx	26

Remarks

- The load capacities stated are valid for lifting operation only (corresponding with crane classification according to ISO 4301-1, crane group A1).
- Machine is standing on firm, horizontal ground.
- The weight of the lifting device (pulley block, hoist ropes, shackles, etc.) must be deducted from the load capacity.
- Additional equipment on boom (e.g. walkways) must be deducted from the load capacity.
- The max. admissible wind speed can be preselected in the LML software and referred to in the load chart.
- Working radii are measured from centre of swing ring and under load.
- The lifting capacities are valid for 360 degrees of swing.
- Calculation of stability under load is based on ANSI/ASME B 30.5 load ratings as well as ISO 4305 Table 2 and tested according to SAE J765 and SAE J987.
- Weights may vary depending on the delivered configuration of the machine, filling level of the tanks, as well as generally valid tolerances.
- The illustrations in this brochure may include options which are not within the standard scope of supply of the machine.
- Subject to technical change without notice.

Concept and characteristics



Cabin with high comfort
- optimized view
- noise-reducing design
- orthopaedic seat

Additional
safety platform

Carbody counterweight 22,000 lbs

Crawler side frames with
3'3" flat track pads

Platforms



High performance

A powerful, efficient and reliable electro-hydraulic drive system combined with a high-performance lithium-ion battery ensures high productivity and allows for several movements to be carried out simultaneously.

Cabin with high comfort

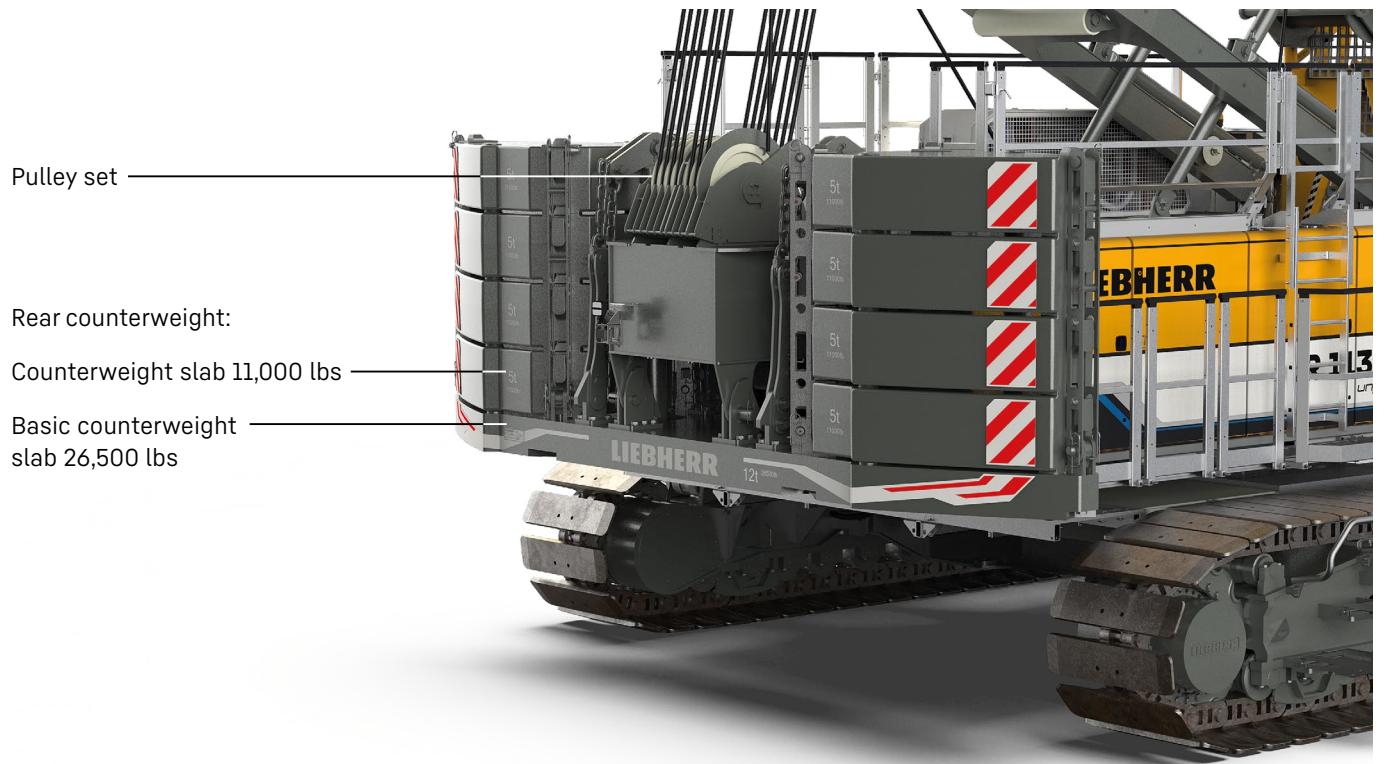
Optimised field of vision combined with enhanced comfort: an orthopaedic operator's seat with heating and cooling functions, as well as precise and ergonomic controls are included.

Ground pressure

The actual ground pressure is calculated according to the configuration and position of the machine and displayed in the operator's cabin. Using the optional Liebherr Crane-Planner the actual ground pressure can already be calculated and displayed in the planning stage.

Control

Easy and intuitive handling of control, service and machine functions through a large, clear colour monitor. Built for extreme environmental conditions.



Pulley set

Rear counterweight:

Counterweight slab 11,000 lbs

Basic counterweight slab 26,500 lbs

Efficient self-assembly system and short assembly times

The self-assembly system enables safe, independent and quick assembly/disassembly of the crawler side frames, the carbody and rear counterweights, as well as boom elements.

Easy service

The design ensures easy maintenance and service as well as safe access to the components.

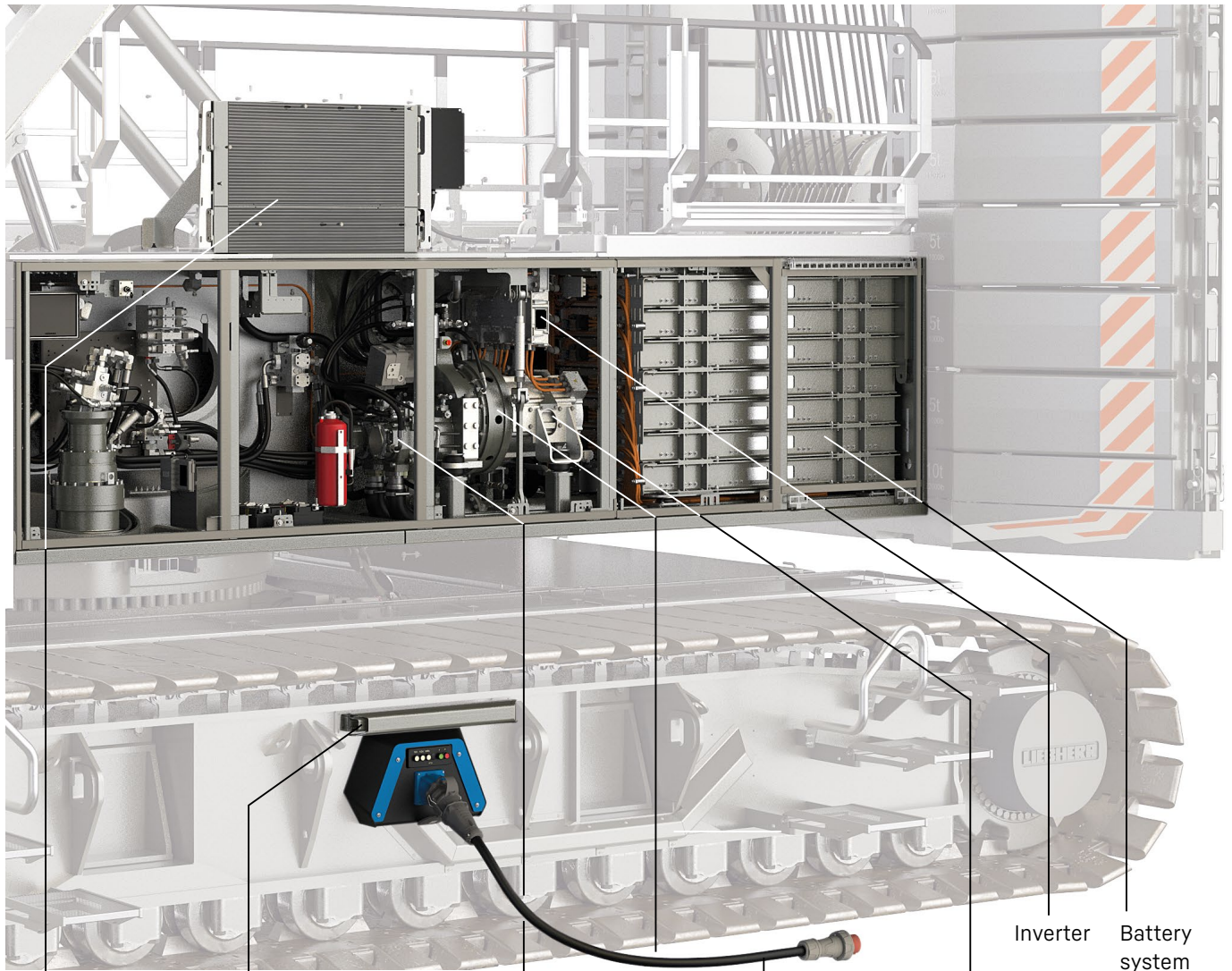
Mobility

Crane parts are optimized for transportation. The maximum transport width is 9.84 ft.

Boom/jib

A variety of boom systems and configurations allow for optimum operation on the most diverse jobsites.

Exemplifying illustration



Combination cooler with expansion tank

Cantilever for electric cable

Hydraulic pumps

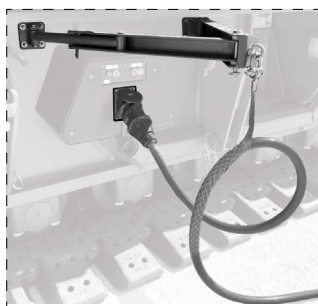
Distribution gearbox

Charging cable (not included in scope of supply)

Electric engine

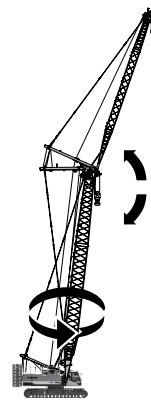
Inverter

Battery system

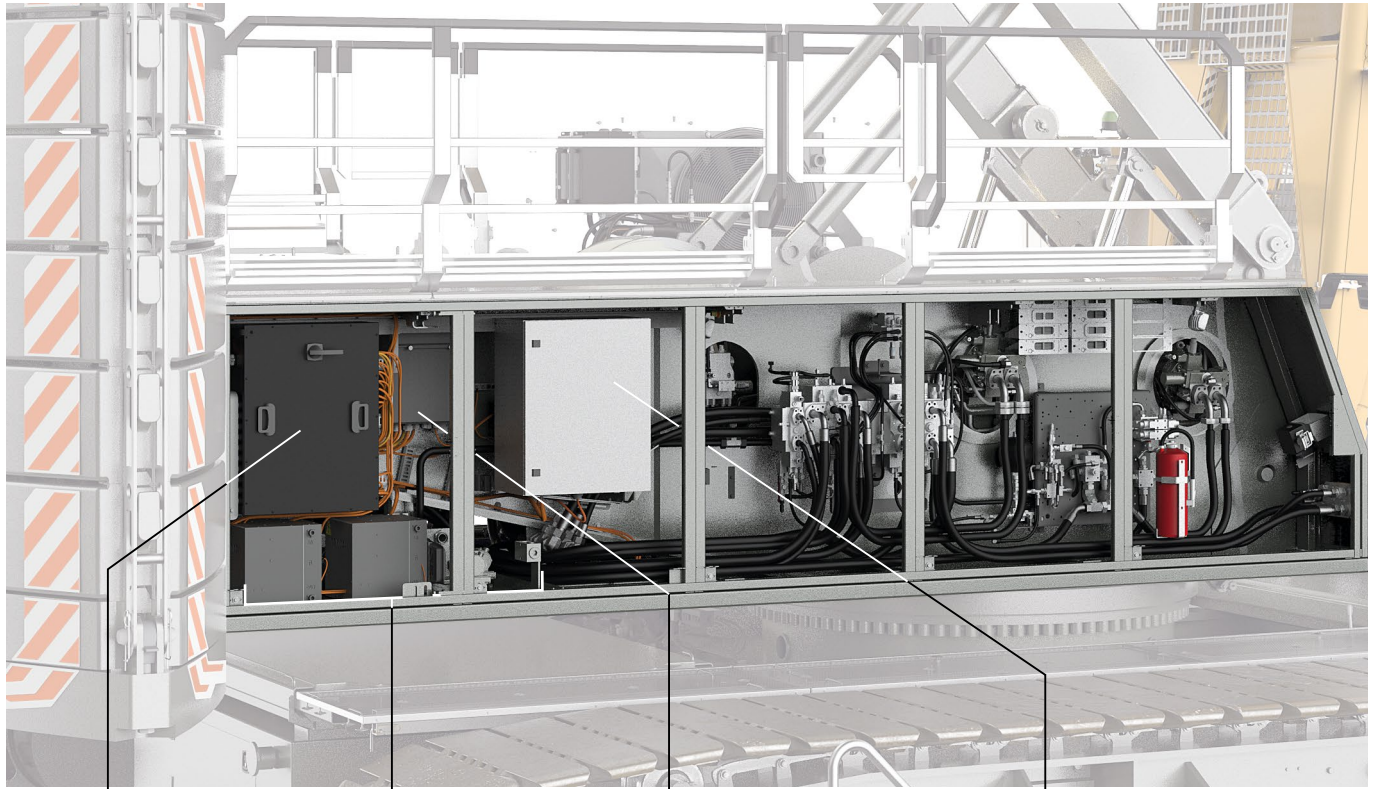


Performance “plugged in”

The crane’s performance in “plugged” operation is in no way inferior to its diesel-driven performance. The machine can be used without limitations as the battery charges continuously when connected and so delivers sufficient energy at all times.



Exemplifying illustration



Switch cabinet 700 VDC (Direct Current)

Thermal management system

Switch cabinet 400 VAC (Alternating Current)

Switch cabinet 24 V LVDU (Low Voltage Distribution Unit)

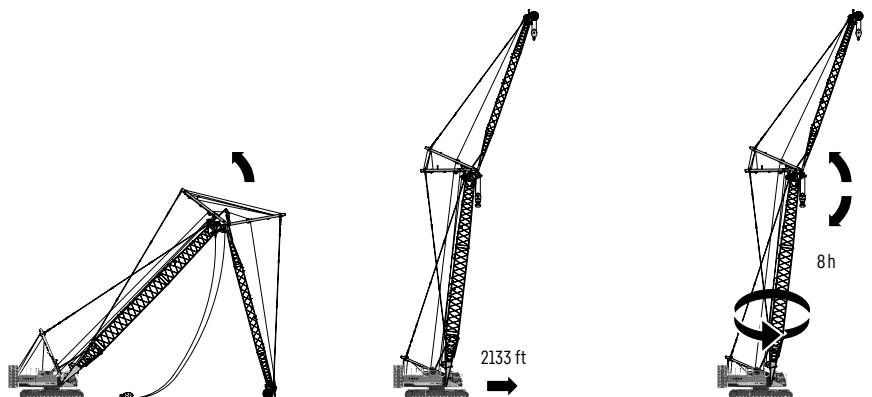
Performance “unplugged”

The crane’s performance⁽¹⁾ in “unplugged” operation allows for erecting the boom and jib, for travelling a distance of approx. 2133 ft⁽²⁾ with full counterweight or for approx. 8 hours⁽³⁾ of crane operation.

¹ Battery service life can be optimized by operating the crane in “plugged-in” operation as often as possible.

² Fully ballasted on even terrain at 10-25 °C ambient temperature

³ With an observation period of 10,000 shifts, in 50 % of all shifts the crane can operate in “unplugged” mode for approx. 8 hours at an ambient temperature of 10-25 °C.



Technical description



Drive system

Max. drive power	255 kW (45 °C temperature of cooling water)
Battery type	High Performance Battery System
Technology	Li-Ion NMC (nickel manganese cobalt)
Max. charging power	20 kW @ 30 A 40 kW @ 60 A
Option	80 kW @ 100 A
Mains voltage	400-480 VAC (3 phase + N + PE / 3 phase + PE)



Noise measurement data and vibration

Noise emission	according to 2000/14/EC directive	
Emission sound pressure level L_{PA}	n.a. dB(A)	(in the cabin)
Guaranteed sound power level L_{WA}	n.a. dB(A)	(of the machine)
Vibration transmitted to the machine operator	< 8.20 ft/s ²	(to the hand-arm system)
	< 1.64 ft/s ²	(to the whole body)



Hydraulic system

Hydraulic pumps	double axial displacement pump in open loop hydraulic system allows all functions to be operated simultaneously automatic working pressure cut-off to minimize peak pressure
Hydraulic oil tank capacity	172 gal
Max. working pressure	5,076 PSI
Hydraulic oil	electronic monitoring of all filters use of synthetic environmentally friendly oil possible



Control

Control system	includes all control and monitoring functions, designed to withstand extreme environmental conditions and heavy construction tasks
Display	high resolution monitor in the operator's cabin, clear display of complete machine operating data, warnings and failure indications in the required language
Operation	several movements can be performed simultaneously thanks to electro-hydraulic proportional control, all categories of loads can be positioned with utmost precision



Crawlers

Drive system	with fixed axial piston hydraulic motors
Crawler side frames	maintenance-free, with hydraulic chain tensioning device
Brake	hydraulically released, spring-loaded multi-disc holding brake
Drive speed	0-1.056 mph
Flat track pads	width 3.3 ft



Swing gear

Drive system	with fixed axial piston hydraulic motors, planetary gearbox, pinion
Swing ring	roller bearing with external teeth
Brake	hydraulically released, spring-loaded multi-disc holding brake
Swing speed	0-2.2 rpm continuously variable
Speed control	both swing modes are possible - speed control or free swing for speed control: a multi-disc holding brake locks automatically at zero swing motion.



Hoisting gear

Standard crane winches 1 + 2	Internal low-maintenance planetary gearbox in oil bath, load support by the hydraulic system, spring-loaded, multi-disc holding brake, pressure controlled, variable flow hydraulic motors for the main winches, full utilisation of engine power as the winch speed is automatically adjusted to suit the respective line pull
Line pull in the 7 th layer	26,977 lbf
Rope diameter	26 mm
Drum diameter	1.9 ft
Rope speed	0-446 ft/min
Rope capacity in 7 layers	1604 ft
Option - winch with free fall	free fall: clutch and braking functions are provided by the service brake (low wear and maintenance-free multi-disc brake in compact design)






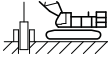


Boom/jib luffing winches

Main boom	
Line pull	max. 40,466 lbf
Rope diameter	24 mm
Boom luffing	15-86° in 96 s
Jib	
Line pull	max. 23,605 lbf
Rope diameter	20 mm
Jib luffing	15-78° in 46 s

Operating weight

Composition of operating weight	basic machine with crawlers winches 1 + 2, A-frame 56 ft main boom, consisting of boom foot (23 ft) and boom head (33 ft) 115,300 lbs rear counterweight (8×11,000 lbs + 1×26,500 lbs + 660 lbs) 44,100 lbs carbody counterweight (2×22,000 lbs) 352,700 lbs pulley block
Total weight	approx. 331,575 lbs

Operation modes

	 Lifting mode	 Grab mode	 Personnel lifting mode	 Foundation work
 Land	✓	✓	✓	✓
 Floating structure (barge operation)	✓	✓	✓ *	✓

* only valid for jack-up barges

Optional equipment

Basic machine

Load hook 27,560 / 88,100 / 176,300 / 220,400 / 352,700 lbs

Main winches with free fall

Painting in customer design

Boom/jib

Luffing jib: luffing winch

Boom/jib other

Walkways for main boom sections 10 / 20 / 40 ft

Application packages

Assembly radio remote control

Main winch constant tension for one winch

Operation mode: barge operation

Operation mode: foundation work

Operation mode: personnel lifting

Radio remote control

Rope reeving function via radio remote control

Tagline winch 4,409 lbf free fall

Two hook operation

Use of luffing jib winch as auxiliary winch

Winch synchronization

Special features

Crane Planner 2.0

LiDAT

Self-assembly system

Jack-up system standard / telescopic

Reeving winch

Self-assembly system counterweight

Self-assembly cylinder

Service package

Central lubrication swing ring bearings / outside

Cold package -25 °C

Hydraulic oil bypass filter

Liebherr hydraulic oil plus 37 (longlife & bio)

Liebherr hydraulic oil plus arctic (longlife & bio)

Liebherr hydraulic oil plus arctic (longlife)

Safety features

Access control

Additional access ladder for boom assembly

Aircraft warning light

Airport flag holder

Assistance system: Boom Up-and-Down Assistant

Assistance system: Gradient Travel Aid

Assistance system: Ground Pressure Indication and Visualization

Assistance system: Horizontal Load Path

Assistance system: Vertical Line Finder

Cabin protection roof, FOPS 2

Earth spike

Lifting height indication for both hoist winches

Lightning rod

Mechanical angle display

Platforms and railings on uppercarriage 1.9 ft

Plug&Play diesel-hydraulic back-up unit 18.4 kW

Railings for cabin platform

Railings on rooftop foldable

Rear and side view cameras

Swing and boom radius limit device

Swing warning light

Vandalism cabin protection

Winch camera

Zoom camera at boom head section

Operator's comfort

Additional access ladder

Additional floodlights

Cabin air conditioner

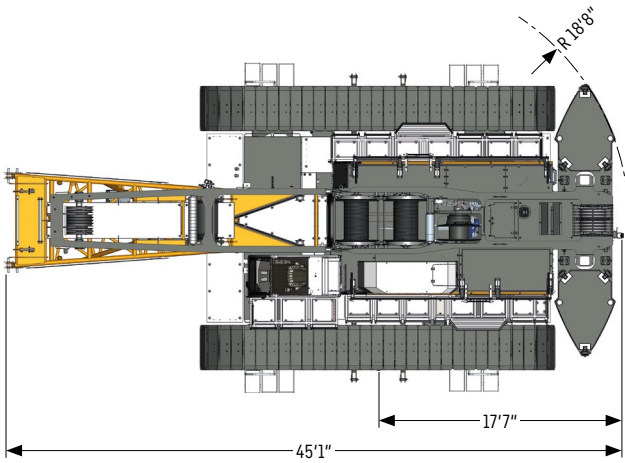
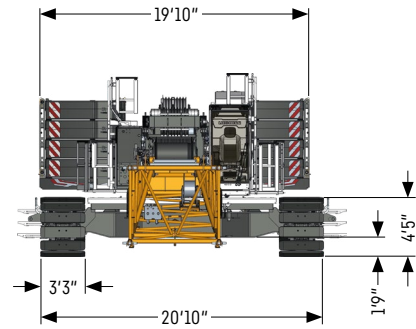
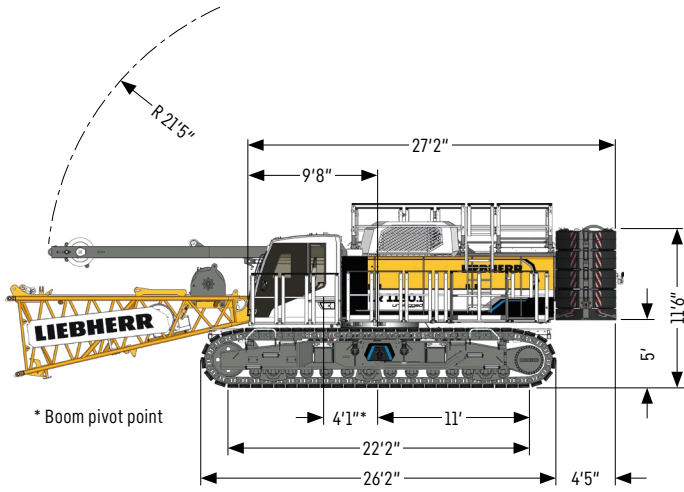
Cabin tilting device hydraulic

Gear oil level warning

Storage box for tools (crawler side frame)

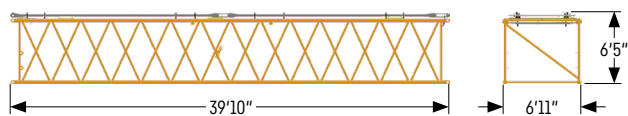
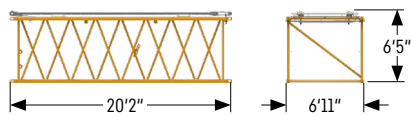
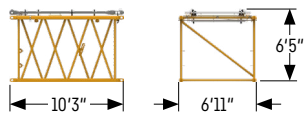
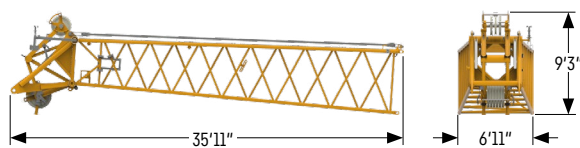
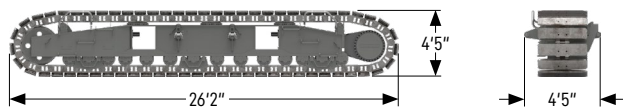
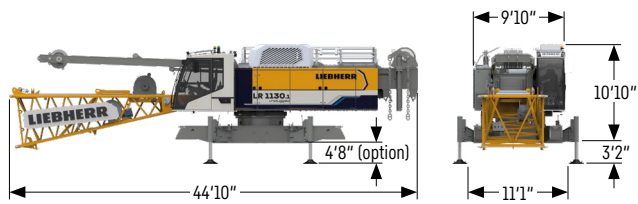
Dimensions

Basic machine with undercarriage



Transport dimensions and weights

Basic machine and boom 2017.xx



Basic machine

Weight without hoist rope	lbs	80,248
Weight of hoist ropes	lbs/ft	2.28
with A-frame 1, winches 1 + 2 (2x 26,977 lbf), with boom foot, without rear counterweight, without carbody counterweight and crawler side frames		

Crawler side frame

Weight flat track pads 3.3 ft	lbs	35,274
-------------------------------	-----	--------

Boom head 33 ft (No. 2017.21)

Weight including boom pendants	lbs	6,614
--------------------------------	-----	-------

Boom section 10 ft (No. 2017.21)

Weight including boom pendants	lbs	1,257
Weight incl. boom and jib pendants	lbs	1,411

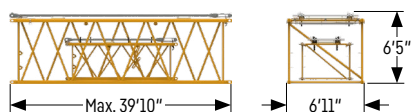
Boom section 20 ft (No. 2017.21)

Weight including boom pendants	lbs	2,050
Weight incl. boom and jib pendants	lbs	2,240

Boom section 40 ft (No. 2017.21)

Weight including boom pendants	lbs	3,649
Weight incl. boom and jib pendants	lbs	4,123

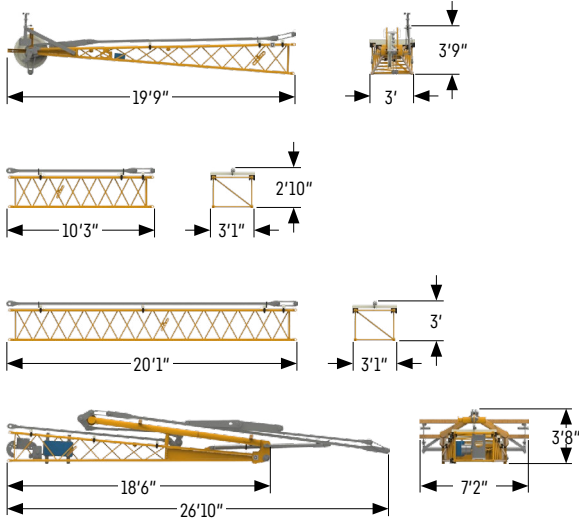
Transport option 2017.xx / 1309.xx



Transport option (No. 2017.xx / 1309.xx)

No. 2017.xx / 1309.xx	ft	20 / 20	40 / 38
Weight including pendants	lbs	3,483	6,239

Fixed jib 0806.xx



Jib head 18 ft (No. 0806.16)

Weight including pendants	lbs 974
---------------------------	---------

Jib section 10 ft (No. 0806.15)

Weight including pendants	lbs 311
---------------------------	---------

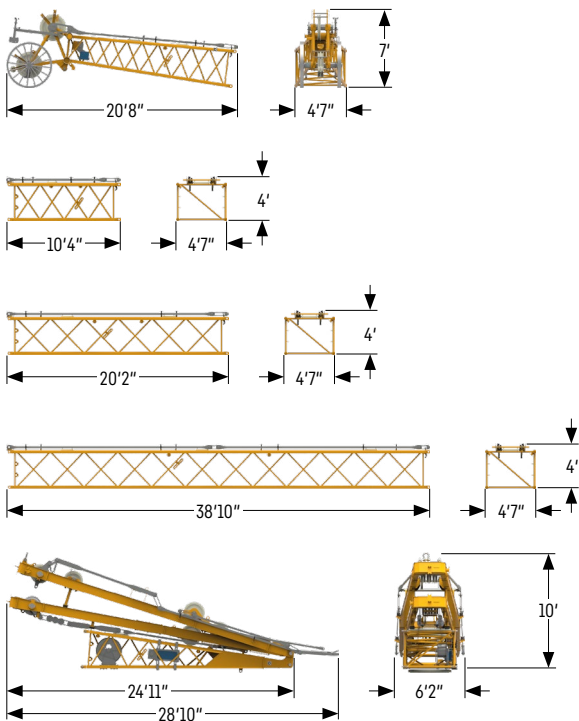
Jib section 20 ft (No. 0806.15)

Weight including pendants	lbs 549
---------------------------	---------

Jib foot 18 ft with A-frame (No. 0806.16)

Weight including pendants	lbs 2,474
---------------------------	-----------

Luffing jib 1309.xx



Jib head 18 ft (No. 1309.22)

Weight including pendants	lbs 2,485
---------------------------	-----------

Jib section 10 ft (No. 1309.20)

Weight including pendants	lbs 677
---------------------------	---------

Jib section 20 ft (No. 1309.20)

Weight including pendants	lbs 1,127
---------------------------	-----------

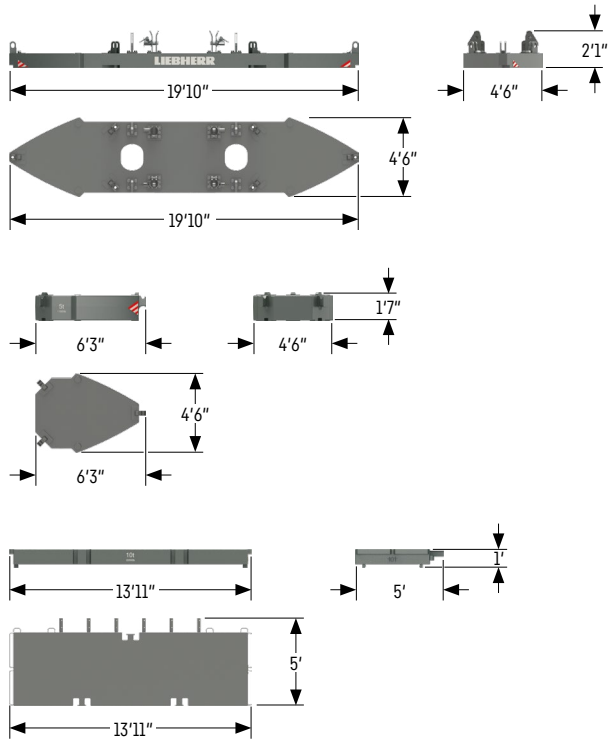
Jib section 38 ft (No. 1309.20)

Weight including pendants	lbs 2,075
---------------------------	-----------

Jib foot 18 ft with A-frames 2 + 3 (No. 1309.22)

Weight including pendants	lbs 9,905
---------------------------	-----------

Counterweight



Basic counterweight slab without tie-down (1x)

Weight	lbs 26,500
--------	------------

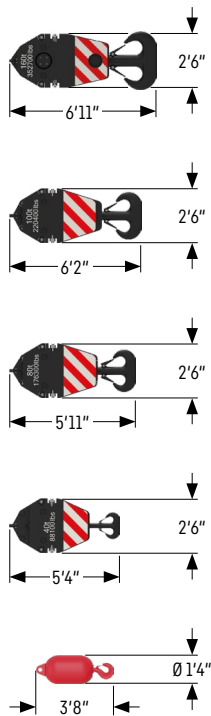
Counterweight slab (8x)

Weight	lbs 11,000
--------	------------

Carbody counterweight (2x)

Weight	lbs 22,000
--------	------------

Pulley block with additional weights / load hooks



352,700 lbs pulley block - 7 pulleys

Width	2'11"
Weight	lbs 3,307 / 4,960 / 6,614

220,400 lbs pulley block - 5 pulleys

Width	2'5"
Weight	lbs 2,866 / 3,968 / 5,071

176,300 lbs pulley block - 3 pulleys

Width	1'10"
Weight	lbs 2,205 / 3,307 / 4,409

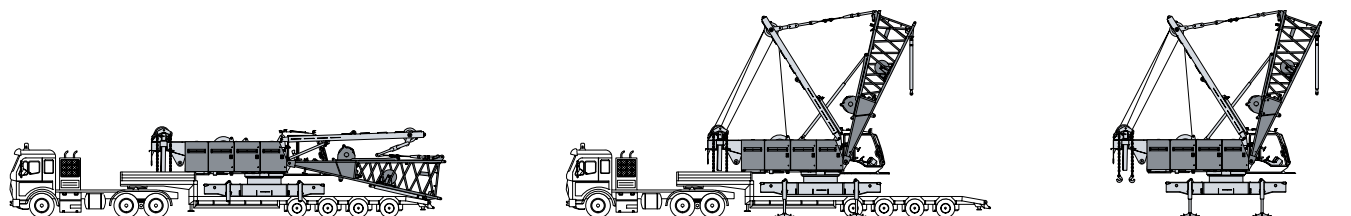
88,100 lbs pulley block - 1 pulley

Width	1'7"
Weight	lbs 1,543 / 2,425 / 3,307

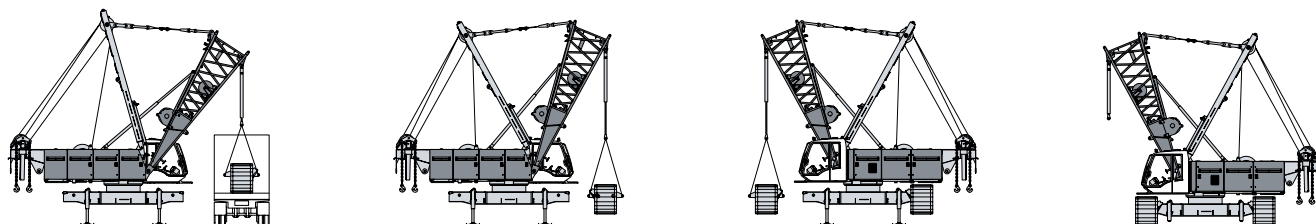
27,560 lbs load hook

Weight	lbs 1,323
--------	-----------

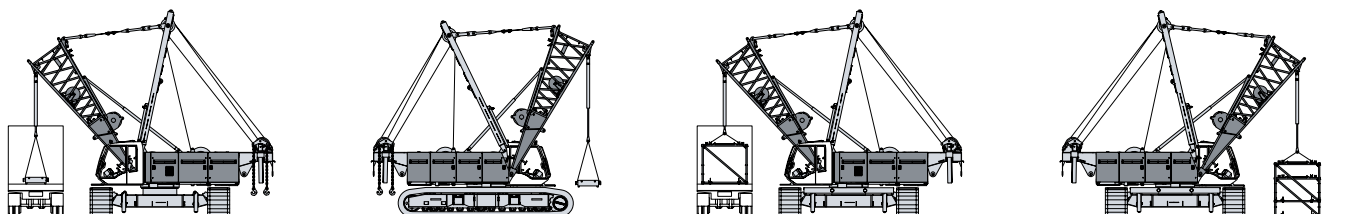
Self-assembly system



Unloading of basic machine

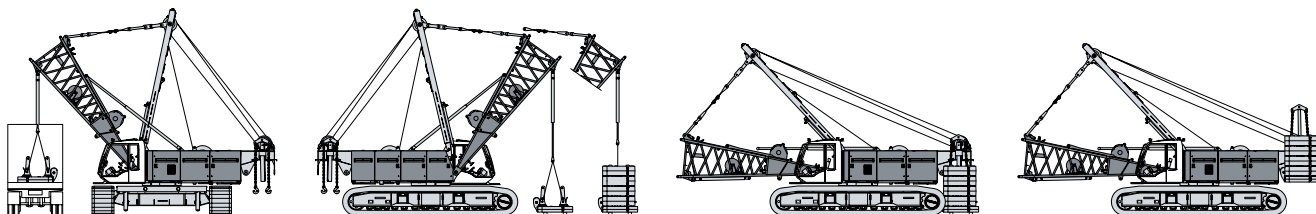


Unloading and assembly of crawler side frames



Unloading and assembly of carbody counterweight

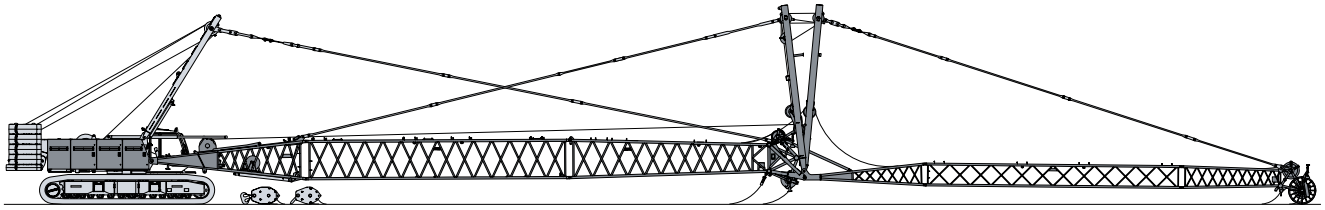
Unloading and assembly of boom



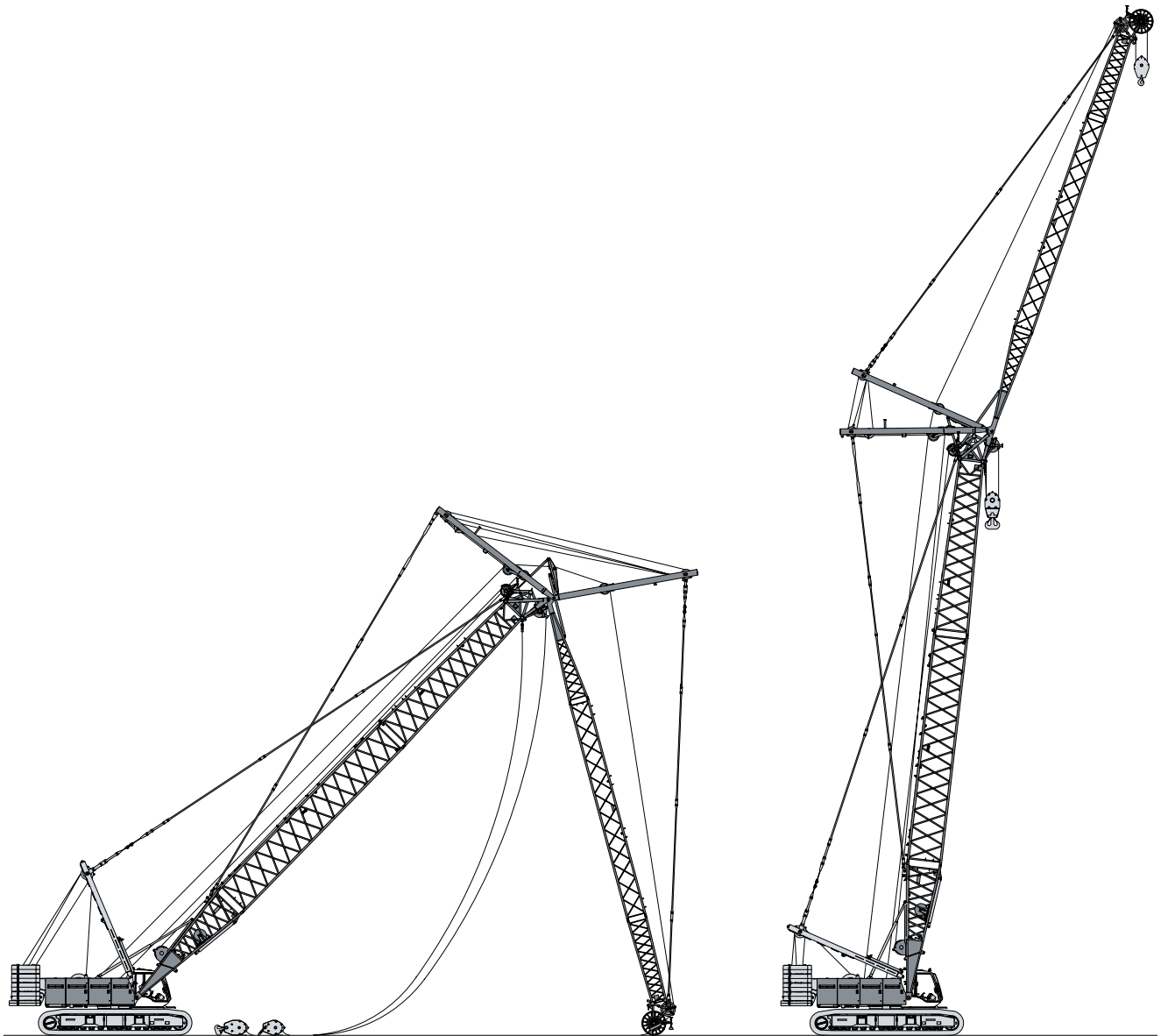
Unloading and assembly of rear counterweight



Assembly of boom

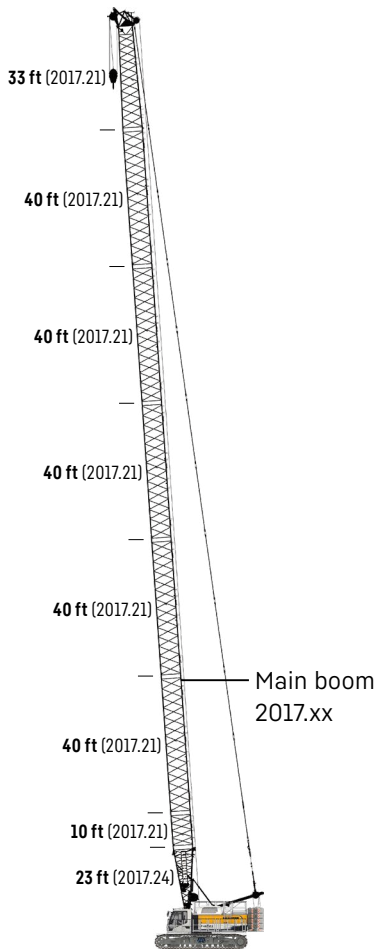


Reeving of hoist and luffing jib ropes



Erecting of main boom and luffing jib

Boom combinations



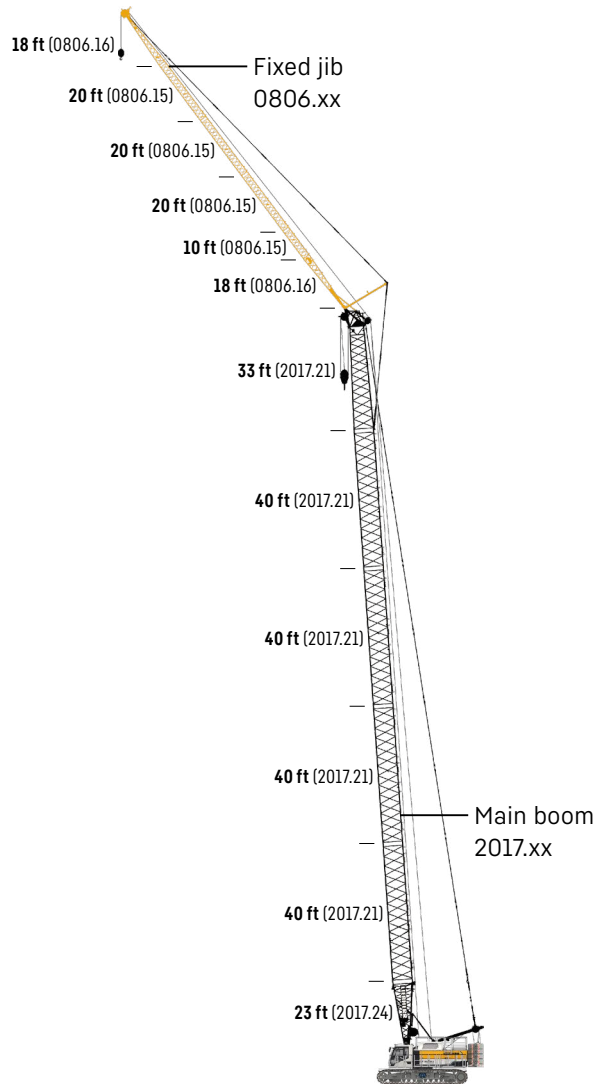
Main boom

Mode 1

Max. length

2017.xx ft 262

Further information on page 18.



Main boom + fixed jib

Mode 3

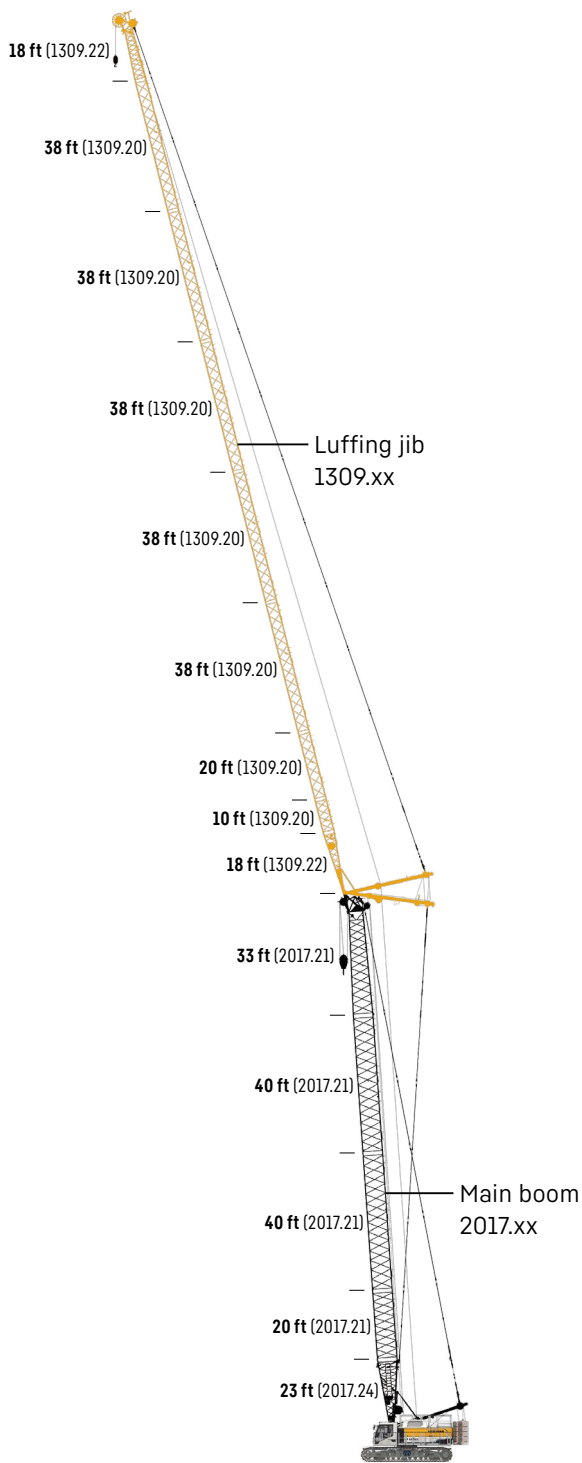
Max. combination

2017.xx ft 213 223

0806.xx ft 105 76

Total length ft 318 299

Further information on page 26.



Main boom + luffing jib

Mode 4

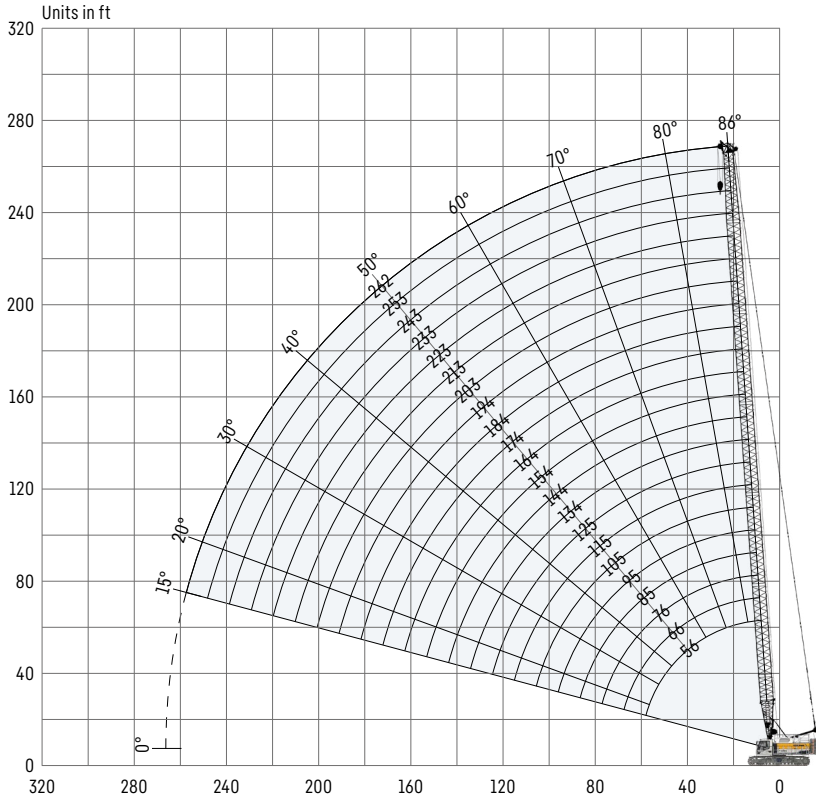
Max. combination

2017.xx	ft 154	174
1309.xx	ft 258	161
Total length	ft 412	335

Further information on page 20.

Main boom 2017.xx

Main boom lengths 56-262 ft



Auxiliary jib 79,366 lbs (option)

The maximum capacity of the auxiliary jib is 79,366 lbs. The corresponding load chart is programmed in the LML system.

Main boom configuration 2017.xx

Boom section	Amount of boom sections											
	1	1	1	1	1	1	1	1	1	1	1	1
Boom foot 23 ft	1	1	1	1	1	1	1	1	1	1	1	1
Boom section 10 ft		1		1		1		1		1		1
Boom section 20 ft			1	1			1	1			1	1
Boom section 40 ft					1	1	1	1	2	2	2	2
Boom head 33 ft	1	1	1	1	1	1	1	1	1	1	1	1
Boom length [ft]	56	66	76	85	95	105	115	125	134	144	154	
Auxiliary jib	✓	✓	✓	✓	✓	✓	✓	✓	✓	✓	✓	✓
Boom foot 23 ft	1	1	1	1	1	1	1	1	1	1	1	1
Boom section 10 ft	1		1		1		1		1		1	
Boom section 20 ft	1			1	1			1	1			
Boom section 40 ft	2	3	3	3	3	4	4	4	4	5	5	
Boom head 33 ft	1	1	1	1	1	1	1	1	1	1	1	1
Boom length [ft]	164	174	184	194	203	213	223	233	243	253	262	
Auxiliary jib	✓	✓	✓	✓	✓	✓	✓	✓	✓	✓	✓	✓

Actual lengths of boom sections are metric (e.g. 3m, 6m). The figures shown above are approximate conversions to feet.

Load capacities with main boom

Load capacities in 1000 lbs

	Boom length [ft]												
	56	66	85	105	125	144	164	184	203	223	233	253	262
11.3	302.5												
13.2	302.5												
15	291.0	289.5	247.5	207.1									
20	222.2	221.6	209.6	189.6	163.3	140.4	119.8						
25	180.1	178.5	175.5	166.8	148.6	129.3	113.6	98.9	83.6	68.5	62.9	52.5	
30	150.5	149.4	146.7	144.3	136.2	118.4	107.3	95.8	80.8	66.9	61.8	52.2	46.3
35	126.5	126.6	126.4	123.4	119.3	110.7	101.5	92.4	78.5	65.4	60.4	51.0	45.2
40	105.0	105.0	104.9	104.8	104.5	99.0	95.7	89.8	76.3	63.2	58.6	49.9	44.3
45	89.4	89.5	89.4	89.2	88.8	88.5	86.3	84.5	74.5	61.3	56.7	48.4	42.6
50	77.6	77.7	77.6	77.4	77.0	76.7	76.2	75.8	70.0	60.0	55.3	47.1	41.1
55	68.2	68.4	68.3	68.2	67.8	67.4	66.9	66.5	64.6	56.9	53.5	46.1	40.0
60		61.0	60.9	60.7	60.3	59.9	59.5	59.0	58.5	54.0	51.1	44.7	38.7
65		54.7	54.8	54.6	54.2	53.8	53.3	52.9	52.4	51.4	48.9	43.2	37.2
70		11.7	49.7	49.5	49.1	48.7	48.2	47.7	47.2	46.7	46.5	41.9	35.8
75		10.6	45.3	45.2	44.7	44.4	43.8	43.4	42.8	42.3	42.1	40.7	34.6
80		9.6	41.5	41.4	41.0	40.6	40.1	39.6	39.1	38.6	38.3	37.8	33.5
90		8.0	12.0	35.3	34.9	34.5	34.0	33.5	33.0	32.4	32.2	31.6	31.0
95		7.3	10.7	32.8	32.4	32.0	31.5	31.0	30.4	29.9	29.6	29.1	28.7
100			6.8	30.5	30.1	29.8	29.2	28.7	28.2	27.7	27.4	26.8	26.6
110			5.7	5.7	26.4	26.0	25.5	25.0	24.5	23.9	23.6	23.1	22.8
115			5.3	5.2	24.7	24.4	23.8	23.4	22.8	22.3	22.0	21.4	21.1
120			4.9	4.8	23.2	22.9	22.3	21.9	21.3	20.8	20.5	19.9	19.6
125				4.4	21.7	21.5	21.0	20.5	19.9	19.4	19.1	18.5	18.2
130				4.1	3.9	20.2	19.7	19.2	18.7	18.1	17.8	17.3	17.0
135				3.8	3.6	19.0	18.5	18.1	17.5	17.0	16.7	16.1	15.8
140						17.9	17.4	17.0	16.4	15.9	15.6	15.0	14.7
145						16.9	16.4	16.0	15.4	14.9	14.6	14.0	13.7
150							15.5	15.0	14.5	13.9	13.7	13.1	12.8
155							14.6	14.2	13.6	13.1	12.8	12.2	11.9
160							13.8	13.4	12.8	12.3	12.0	11.4	11.1
165								12.6	12.0	11.5	11.2	10.7	10.3
170								11.9	11.3	10.8	10.5	9.9	9.6
180								10.5	10.0	9.5	9.2	8.6	8.3
185									9.4	8.9	8.6	8.0	7.7
190									8.8	8.3	8.0	7.5	7.2
195									8.3	7.8	7.5	6.9	6.6
200									7.7	7.3	7.0	6.4	6.1
205										6.8	6.5	5.9	5.6
210										6.3	6.0	5.5	5.2
215										5.8	5.6	5.0	4.7
220										5.4	5.2	4.6	4.3
225											4.7	4.2	3.9
230											4.3	3.8	3.5
240												3.1	2.8
250												2.4	2.1

Carbody counterweight: 44,100 lbs

Rear counterweight:

93,300 lbs

115,300 lbs



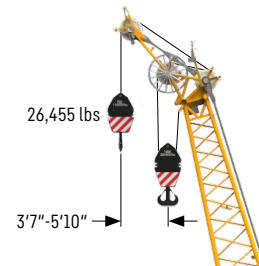
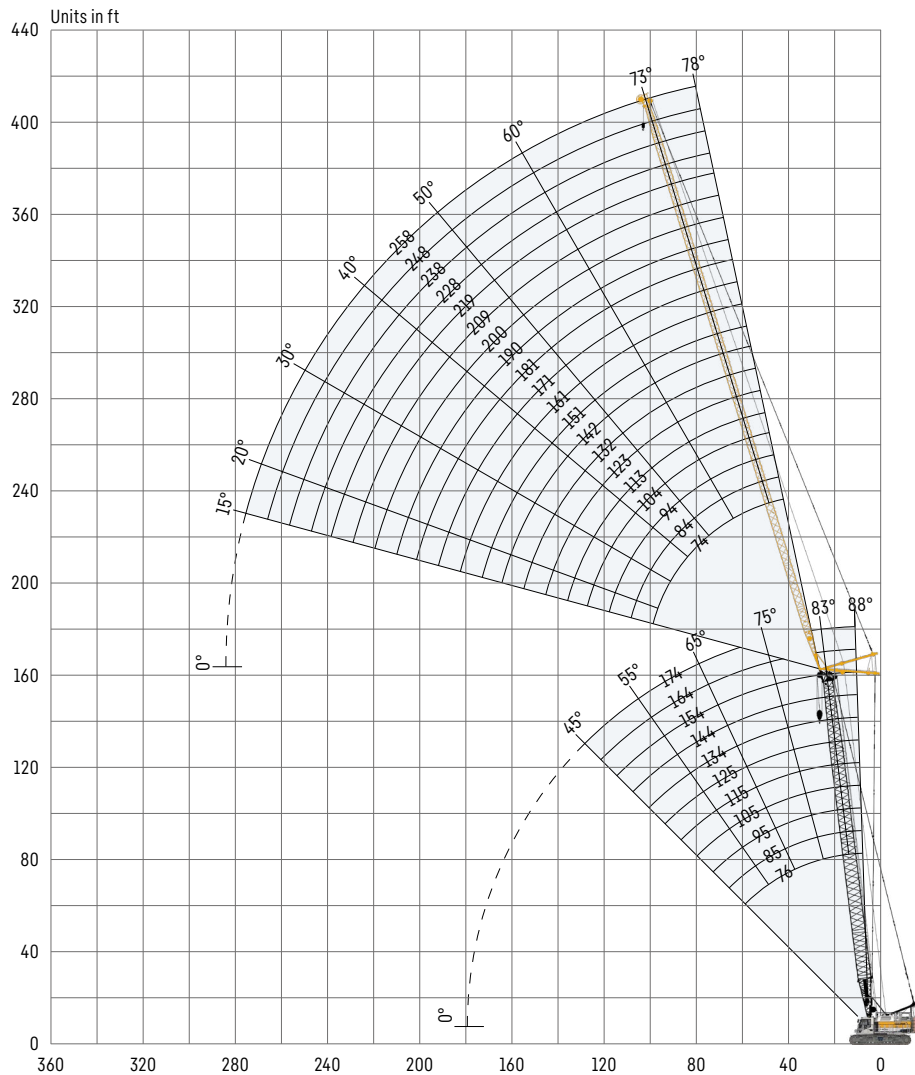
TLT 13639066.295612. Above load charts are for reference only. For actual lift duty please refer to load chart in operator's cabin or manual. Otherwise we recommend you to plan your lifting job using Crane Planner 2.0.

www.liebherr.com/CranePlanner

Crane Planner 2.0

Luffing jib 1309.xx

Jib lengths 74-258 ft



Auxiliary jib 26,455 lbs (option)
The maximum capacity of the auxiliary jib is 26,455 lbs.

Jib configuration 1309.xx

Jib section	Amount of jib sections																			
	74	84	94	104	113	123	132	142	151	161	171	181	190	200	209	219	228	238	248	258
Jib foot 18 ft	1	1	1	1	1	1	1	1	1	1	1	1	1	1	1	1	1	1	1	1
Jib section 10 ft		1		1		1		1		1		1		1		1		1		1
Jib section 20 ft			1	1			1	1			1	1			1	1			1	1
Jib section 38 ft	1	1	1	1	2	2	2	2	3	3	3	3	4	4	4	4	5	5	5	5
Jib head 18 ft	1	1	1	1	1	1	1	1	1	1	1	1	1	1	1	1	1	1	1	1
Jib length [ft]	74	84	94	104	113	123	132	142	151	161	171	181	190	200	209	219	228	238	248	258
Auxiliary jib	✓	✓	✓	✓	✓	✓	✓	✓	✓	✓	✓	✓	✓	✓	✓	✓	✓	✓	✓	✓

Actual lengths of boom sections are metric (e.g. 3 m, 6 m). The figures shown above are approximate conversions to feet. For main boom configuration please refer to the table on page 18.

Load capacities with luffing jib

Load capacities in 1000 lbs with 76 ft main boom [88/83/75/65°]

Radius [ft]	Jib length 74 ft				Jib length 113 ft				Jib length 151 ft			
	88°	83°	75°	65°	88°	83°	75°	65°	88°	83°	75°	65°
27	104.9											
35	94.9	97.4			68.1							
45	78.6	90.0			65.5				42.2			
55	66.4	72.1			59.4	64.9			40.1			
60	61.9	64.7	53.0		56.0	62.3			39.0			
70	53.2	53.6	51.2		49.5	52.9			37.3	38.7		
75	49.1	49.2	47.1		46.0	48.6			36.5	37.8		
85		42.2	40.4	38.2	40.6	41.7	39.7		34.8	36.3		
90			37.7	35.6	38.0	38.9	37.0		33.3	35.8		
100			26.6	31.3	33.5	34.2	32.5		30.7	32.6	31.6	
105				29.5	31.7	32.2	30.6		29.6	31.3	29.7	
115					28.2	28.7	27.3	21.8	26.9	28.0	26.5	
120					26.6	27.2	25.9	20.6	25.5	26.6	25.1	
130							23.4	18.6	23.0	24.0	22.6	21.0
135							22.3	18.2	22.0	22.8	21.5	20.0
145								18.2	20.0	20.8	19.6	18.2
150								18.2	19.0	19.9	18.7	17.3
160										18.2	17.1	15.9
165											16.4	15.2
175												14.0
180												13.4
185												12.9
Radius [ft]	Jib length 190 ft				Jib length 228 ft				Jib length 258 ft			
	88°	83°	75°	65°	88°	83°	75°	65°	88°	83°	75°	65°
45	35.8											
60	24.8				15.6							
65	24.2	19.6			15.3							
80	22.6	23.3			14.1				9.3			
90	21.6	22.3			13.5	13.9			8.7			
110	20.2	20.7	21.2		12.3	12.7			7.7	8.0		
120	19.5	20.0	20.5		11.9	12.2			7.3	7.6		
135	18.5	19.1	19.6	3.1	11.3	11.5	11.9		6.8	7.0		
140	17.9	18.7	19.2	2.8	11.1	11.3	11.7		6.6	6.8	7.1	
150	16.9	17.6	17.9	16.5	10.7	10.9	11.3		6.3	6.5	6.8	
160	16.0	16.7	16.4	15.0	10.5	10.6	10.9		6.0	6.2	6.4	
180	13.7	14.7	13.8	12.6	10.0	10.1	10.3	10.3	5.6	5.7	5.9	
190	12.4	13.4	12.7	11.6	9.8	9.9	10.1	10.0	5.5	5.5	5.7	5.8
200		12.6	11.7	10.7	9.5	9.7	9.9	9.8	5.3	5.4	5.5	5.6
210			10.9	9.9	8.9	9.3	9.7	9.0	5.2	5.2	5.3	5.4
220				9.1	8.3	8.7	9.3	8.3	5.0	5.1	5.2	5.3
230					7.9	8.1	8.6	7.6	5.0	5.0	5.0	5.1
240							7.9	7.0	4.9	4.9	4.9	5.0
250								6.4	4.8	4.8	4.9	4.9
260								6.0	4.7	4.8	4.8	4.8
270											4.8	4.7
285												4.1

Carbody counterweight: 44,100 lbs
 Rear counterweight:
 115,300 lbs



TLT 13639066.295612. Above load charts are for reference only. For actual lift duty please refer to load chart in operator's cabin or manual. Otherwise we recommend you to plan your lifting job using Crane Planner 2.0.

www.liebherr.com/CranePlanner

Crane Planner 2.0

Load capacities with luffing jib

Load capacities in 1000 lbs with 125 ft main boom [88/83/75/65°]

Radius [ft]	Jib length 74 ft				Jib length 113 ft				Jib length 151 ft			
	88°	83°	75°	65°	88°	83°	75°	65°	88°	83°	75°	65°
30	77.3											
40	68.1				53.8							
45	63.3				52.7				34.6			
55	55.6	60.6			48.4				33.9			
60	52.7	57.1			46.2	49.6			33.3			
70	47.6	49.9			42.8	45.5			32.2	33.6		
75	45.5	46.8	44.2		40.9	43.7			31.3	33.1		
85		41.3	37.9		38.0	39.9			30.0	31.4		
90		38.5	35.4		36.5	37.9	34.4		29.0	30.6		
100			31.1		33.8	33.3	30.2		27.3	29.1		
105			29.3	26.0	32.7	31.4	28.5		26.6	28.2		
115				23.2	29.3	28.0	25.4		25.0	26.7	24.5	
120				22.0	27.6	26.6	24.1		24.1	25.8	23.1	
130				19.9		24.0	21.7	19.0	22.4	23.3	20.8	
135							20.7	18.1	21.7	22.2	19.8	
145							18.8	16.4	20.2	20.2	18.0	
150							18.0	15.7	19.4	19.3	17.2	14.7
160								14.4		17.7	15.7	13.4
175											13.9	11.8
185											12.7	10.8
190												10.4
205												9.1
Radius [ft]	Jib length 190 ft				Jib length 228 ft				Jib length 258 ft			
	88°	83°	75°	65°	88°	83°	75°	65°	88°	83°	75°	65°
55	22.3											
65	21.5				13.8							
70	21.1				13.5				9.2			
80	20.5	21.0			12.9				8.7			
85	20.1	20.9			12.6				8.4			
95	19.3	20.2			12.2	12.7			7.9			
100	19.0	19.8			11.9	12.4			7.7	8.0		
120	17.9	18.5			11.1	11.4			6.9	7.3		
125	17.7	18.2	18.4		10.9	11.2			6.7	7.1		
135	17.3	17.7	17.9		10.5	10.9			6.4	6.7		
140	16.9	17.5	17.6		10.3	10.7	11.0		6.3	6.6		
150	16.2	16.8	16.3		10.1	10.4	10.7		6.0	6.3		
155	15.9	16.5	15.6		9.9	10.2	10.6		5.8	6.1	6.5	
180	13.9	14.3	12.5	10.3	9.4	9.6	9.8		5.3	5.5	5.8	
200		12.2	10.6	8.6	9.0	9.3	9.2	7.7	5.0	5.2	5.4	
220			9.0	7.3	8.3	8.8	8.2	6.4	4.8	4.9	5.1	5.2
225				7.0	8.1	8.6	7.9	6.1	4.7	4.8	5.0	5.0
240				6.1		8.0	6.9	5.2	4.6	4.7	4.8	4.3
250							6.3	4.8	4.5	4.6	4.7	3.8
270								3.9		4.5	4.3	3.0
280								3.5			4.0	2.7
300												2.0

Carbody counterweight: 44,100 lbs
 Rear counterweight:
 115,300 lbs



TLT 13639066.295612. Above load charts are for reference only. For actual lift duty please refer to load chart in operator's cabin or manual. Otherwise we recommend you to plan your lifting job using Crane Planner 2.0.

www.liebherr.com/CranePlanner



Load capacities with luffing jib

Load capacities in 1000 lbs with 144 ft main boom [88/83/75/65°]

Radius [ft]	Jib length 74 ft				Jib length 113 ft				Jib length 151 ft			
	88°	83°	75°	65°	88°	83°	75°	65°	88°	83°	75°	65°
30	65.4											
40	58.3				45.9							
45	54.5				44.1							
55	48.5	52.9			40.5				30.2			
60	46.1	49.5			38.6	41.2			29.8			
70	41.9	43.9			35.6	38.3			28.8			
75	40.3	41.6			34.0	36.3			27.8	29.4		
85		37.5	36.7		31.5	33.1			26.3	27.7		
90		36.0	34.3		30.1	31.6			25.4	26.6		
100			30.1		27.5	29.2	29.2		23.8	25.2		
105			28.4		26.5	28.1	27.5		23.1	24.2		
115			25.3	21.8	25.0	26.2	24.5		21.9	22.6	22.8	
120				20.7	24.2	25.3	23.2		21.3	22.0	22.1	
130				18.6		23.5	20.9		20.2	20.7	20.0	
135				17.7		15.0	19.9	16.8	19.7	20.0	19.0	
145							18.1	15.2	18.7	19.0	17.3	
150							17.3	14.5	18.2	18.5	16.5	
160								13.3		17.4	15.1	12.3
165								12.7		16.7	14.4	11.7
180										12.7	10.3	
200												8.7
215												7.7
Radius [ft]	Jib length 190 ft				Jib length 228 ft				Jib length 258 ft			
	88°	83°	75°	65°	88°	83°	75°	65°	88°	83°	75°	65°
55	20.4											
65	19.7				13.1							
70	19.4				12.8				8.7			
80	18.9				12.2				8.3			
85	18.6	19.5			12.0				8.1			
95	18.0	18.9			11.5	12.0			7.6			
100	17.8	18.5			11.3	11.9			7.4			
120	16.5	17.1			10.6	11.0			6.6	7.1		
125	16.2	16.6			10.4	10.8			6.4	6.9		
135	15.8	15.9	15.7		10.1	10.5			6.2	6.5		
140	15.4	15.6	15.4		9.9	10.3			6.0	6.4		
150	14.7	15.0	14.8		9.6	10.0	10.1		5.8	6.1		
155	14.4	14.7	14.4		9.5	9.8	9.9		5.6	6.0		
180	13.0	13.2	11.9	9.3	9.0	9.2	9.1		5.1	5.4	5.7	
200		11.8	10.0	7.7	8.7	8.7	8.4		4.8	5.0	5.2	
220			8.5	6.5	8.1	8.2	7.5	5.3	4.6	4.8	4.9	4.0
225			8.2	6.2	7.9	8.0	7.3	5.0	4.6	4.7	4.8	3.8
240				5.4		7.5	6.5	4.3	4.5	4.5	4.6	3.1
250				4.9			5.9	3.9	4.4	4.5	4.4	2.7
270								3.1		4.3	3.9	2.0
280								2.8			3.5	
295											3.0	

Carbody counterweight: 44,100 lbs
 Rear counterweight:
 115,300 lbs



TLT 13639066.295612. Above load charts are for reference only. For actual lift duty please refer to load chart in operator's cabin or manual. Otherwise we recommend you to plan your lifting job using Crane Planner 2.0.

www.liebherr.com/CranePlanner
Crane Planner 2.0

Load capacities with luffing jib

Load capacities in 1000 lbs with 164 ft main boom [88/83/75/65°]

Radius [ft]	Jib length 74 ft				Jib length 104 ft				Jib length 132 ft			
	88°	83°	75°	65°	88°	83°	75°	65°	88°	83°	75°	65°
35	54.1											
45	47.9				40.7				32.7			
50	45.7				38.8				32.1			
60	41.1	43.3			35.4	37.2			30.2			
65	39.4	41.1			34.1	35.9			29.2			
75	36.5	36.6			31.1	32.4			27.1	28.3		
80	35.3	35.1			30.1	31.0			26.2	27.3		
90		32.6	30.8		27.7	28.1			24.3	25.1		
95		31.2	29.1		26.8	27.1			23.5	24.1		
105			26.5		24.6	25.3	24.1		22.2	22.2		
110			25.4		23.3	24.5	22.9		21.6	21.5	20.7	
120			23.1			22.8	21.1		20.5	20.2	19.1	
125				18.2		21.9	20.2		19.8	19.6	18.3	
135				16.4			18.7		17.6	18.6	17.0	
140				15.6			18.3	14.8	16.5	18.0	16.4	
150							16.4	13.4		16.7	15.1	
155								12.8			14.6	12.1
160								12.3			14.2	11.6
170								11.2			13.5	10.6
180												9.7
190												8.9
205												7.8
Radius [ft]	Jib length 161 ft				Jib length 190 ft				Jib length 228 ft			
	88°	83°	75°	65°	88°	83°	75°	65°	88°	83°	75°	65°
50	24.8											
60	24.1				18.6							
65	23.6				18.2				12.0			
75	22.7				17.7				11.6			
80	22.0	22.7			17.5				11.5			
90	20.9	21.4			16.8	17.3			11.0			
95	20.2	20.6			16.5	16.9			10.8			
105	19.0	19.4			16.0	16.1			10.4	11.0		
110	18.4	18.7			15.6	15.6			10.2	10.8		
120	17.5	17.4	16.4		14.7	14.9			10.0	10.4		
130	16.7	16.4	15.7		14.0	14.0			9.7	10.1		
140	15.9	15.6	14.5		13.4	13.3	12.6		9.4	9.8		
150	15.1	14.8	13.4		12.8	12.6	11.9		9.1	9.3	8.5	
160	14.1	14.1	12.6		12.3	12.0	11.0		8.9	8.8	8.2	
170		13.3	11.7		11.8	11.4	10.3		8.6	8.5	7.9	
190			10.5	8.1	10.8	10.4	9.0	7.3	8.0	7.8	7.0	
200			10.0	7.4		9.8	8.4	6.6	7.8	7.4	6.7	
215				6.5			7.8	5.8	7.4	7.0	5.9	4.2
225				5.9			7.4	5.3	7.1	6.7	5.4	3.7
240								4.6		6.2	4.9	3.1
250								4.1			4.7	2.7
270											4.2	2.0

Carbody counterweight: 44,100 lbs
 Rear counterweight:
 115,300 lbs



TLT 13639066.295612. Above load charts are for reference only. For actual lift duty please refer to load chart in operator's cabin or manual. Otherwise we recommend you to plan your lifting job using Crane Planner 2.0.

www.liebherr.com/CranePlanner
Crane Planner 2.0

Load capacities with luffing jib

Load capacities in 1000 lbs with 174 ft main boom [88/83/75/65°]

Radius [ft]	Jib length 74 ft				Jib length 94 ft				Jib length 113 ft			
	88°	83°	75°	65°	88°	83°	75°	65°	88°	83°	75°	65°
35	49.8				43.7							
40	47.0				42.0				36.9			
45	44.4				39.9				35.8			
55	40.0	42.5			36.2				33.1			
60	38.1	39.9			34.8	36.5			31.5			
70	35.0	35.4			31.6	32.5			29.2	30.1		
75	33.8	33.5			30.5	31.0			27.9	28.6		
85	31.0	30.9			28.3	27.9			25.9	26.1		
90		30.0	27.4		27.4	26.9			25.0	24.8		
100		27.3	24.7		24.9	25.1	23.0		23.5	22.9		
105			23.6			24.4	21.9		22.8	22.2	20.6	
115			21.7			22.4	20.0		20.7	20.9	18.8	
120			21.2				19.1		19.6	20.3	17.9	
130				16.6			17.7			18.9	16.6	
135				15.8			17.3			18.1	15.9	
145				14.3			16.0	13.8			14.8	
150				13.6							14.4	12.6
160											13.7	11.5
165									11.5			11.0
175												10.1
180												9.7
190												8.9
Radius [ft]	Jib length 132 ft				Jib length 151 ft				Jib length 161 ft			
	88°	83°	75°	65°	88°	83°	75°	65°	88°	83°	75°	65°
45	30.6											
55	29.1				25.1				23.0			
60	28.2				24.6				22.7			
70	26.1	26.7			23.6				21.8			
75	25.2	25.9			22.7	22.9			21.3			
85	23.5	23.7			21.3	21.6	23.7		19.9	20.2		
90	22.6	22.8			20.7	20.8			19.4	19.5		
100	21.3	21.0			19.3	19.3			18.2	18.2		
105	20.7	20.2			18.7	18.7			17.6	17.6		
115	19.5	18.9	17.4		17.8	17.3			16.6	16.4		
120	19.1	18.3	16.7		17.3	16.8	15.3		16.2	15.8		
130	17.6	17.3	15.3		16.4	15.8	14.2		15.4	14.9	13.6	
140	15.9	16.4	14.2		15.7	14.9	13.1		14.7	14.1	12.5	
150		15.3	13.1		14.6	14.2	12.2		14.1	13.3	11.5	
160			12.2	11.0		13.4	11.3		13.2	12.7	10.8	
170			11.7	10.0		12.5	10.5	9.5		12.0	10.0	
180			11.1	9.1			9.9	8.7		11.2	9.3	8.3
190				8.4			9.5	7.9			8.8	7.6
200				7.7			8.9	7.2			8.4	6.9
210				7.1				6.6				6.3
220								6.0				5.8
235												5.0

Carbody counterweight: 44,100 lbs
 Rear counterweight:
 115,300 lbs

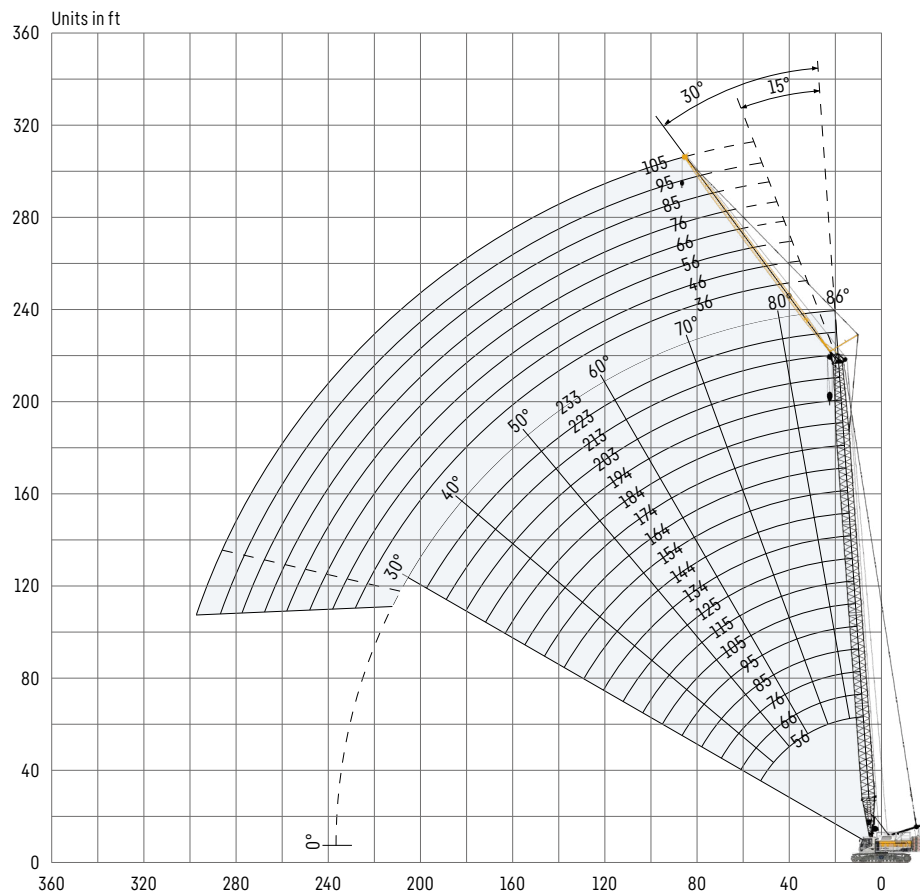


TLT 13639066.295612. Above load charts are for reference only. For actual lift duty please refer to load chart in operator's cabin or manual. Otherwise we recommend you to plan your lifting job using Crane Planner 2.0.

www.liebherr.com/CranePlanner
Crane Planner 2.0

Fixed jib 0806.xx

Jib lengths 36-105 ft



Jib configuration 0806.xx

Jib section	Amount of jib sections							
Jib foot 18 ft	1	1	1	1	1	1	1	1
Jib section 10 ft		1		1		1		1
Jib section 20 ft			1	1	2	2	3	3
Jib head 18 ft	1	1	1	1	1	1	1	1
Jib length [ft]	36	46	56	66	76	85	95	105

Actual lengths of boom sections are metric (e.g. 3 m, 6 m). The figures shown above are approximate conversions to feet. For main boom configuration please refer to the table on page 18.

Load capacities with fixed jib

Load capacities in 1000 lbs with 85 ft main boom

	Jib length 36 ft		Jib length 46 ft		Jib length 66 ft		Jib length 85 ft		Jib length 105 ft	
	15°	30°	15°	30°	15°	30°	15°	30°	15°	30°
20	51.5		37.2							
30	49.8	44.2	35.9							
40	47.5	40.4	33.4	29.1	22.8					
50	43.3	37.0	31.4	27.7	21.6	19.2	15.6		11.4	
60	39.7	34.2	29.6	26.5	20.6	18.3	14.8	13.6	10.8	
70	36.3	31.9	28.0	25.6	19.8	17.6	14.1	13.1	10.1	
80	32.8	30.1	26.8	24.8	18.8	17.2	13.4	12.7	9.6	8.8
100	27.0	24.5	23.1	21.7	17.0	16.2	12.4	12.0	8.8	8.2
110	25.9	24.3	21.9	19.9	16.3	15.5	12.0	11.7	8.3	7.8
130					15.1	14.4	11.4	11.3	7.7	7.4
140					14.6	14.2	11.1	11.0	7.4	7.2
160							10.8	10.8	7.0	7.0
170									7.0	6.9
185									6.5	6.9

Load capacities in 1000 lbs with 115 ft main boom

	Jib length 36 ft		Jib length 46 ft		Jib length 66 ft		Jib length 85 ft		Jib length 105 ft	
	15°	30°	15°	30°	15°	30°	15°	30°	15°	30°
20	49.9									
35	48.0	39.0	35.2	29.9	23.8					
40	46.0	37.4	34.3	29.4	23.0					
55	40.7	33.6	31.8	27.5	21.5	19.0	15.3		11.1	
60	38.9	32.4	31.0	27.0	21.1	18.6	15.0	13.6	10.8	
75	34.4	29.7	29.0	24.8	19.8	17.7	14.1	13.0	10.1	9.1
80	33.1	28.9	28.0	24.2	19.4	17.4	13.8	12.8	9.9	8.9
100	28.5	26.1	24.8	22.0	17.8	16.3	12.9	12.3	9.0	8.4
120	24.0	23.0	21.2	19.6	16.3	15.3	12.1	11.8	8.4	7.9
140	18.6	18.4	18.8	17.8	14.7	13.6	11.3	11.3	7.9	7.5
150			17.4	17.1	14.2	12.9	10.9	10.7	7.6	7.4
170					13.4	12.8	10.2	9.7	7.3	7.2
190							9.7	9.6	7.1	7.1
210									7.0	7.1

Load capacities in 1000 lbs with 144 ft main boom

	Jib length 36 ft		Jib length 46 ft		Jib length 66 ft		Jib length 85 ft		Jib length 105 ft	
	15°	30°	15°	30°	15°	30°	15°	30°	15°	30°
25	45.5									
40	39.5	35.6	34.0	29.2	23.0					
50	34.9	33.5	32.4	27.5	22.1	19.1	15.3			
70	27.8	29.1	28.3	24.9	20.4	17.9	14.1	13.0	10.2	
80	25.1	26.9	26.3	23.7	19.7	17.5	13.7	12.7	9.8	8.8
100	20.4	21.8	21.6	21.5	18.6	16.2	12.9	12.2	9.1	8.3
110	19.1	19.9	20.0	20.4	17.9	15.7	12.6	11.9	8.8	8.2
130	16.6	16.7	17.1	17.7	16.8	14.7	11.9	11.4	8.3	7.8
140	15.3	15.5	15.9	16.1	15.7	14.2	11.7	11.0	8.0	7.6
165	10.9	11.1	12.4	12.7	14.1	12.9	10.9	10.4	7.6	7.4
180					11.0	10.8	10.2	9.6	7.3	7.2
200							8.4	8.4	7.0	7.1
215							7.2	7.3	6.6	6.9
235									6.1	6.3

Carbody counterweight: 44,100 lbs
 Rear counterweight:
 115,300 lbs

TLT 13639066.295612. Above load charts are for reference only. For actual lift duty please refer to load chart in operator's cabin or manual. Otherwise we recommend you to plan your lifting job using Crane Planner 2.0.

Load capacities with fixed jib

Load capacities in 1000 lbs with 194 ft main boom

	Jib length 36 ft		Jib length 46 ft		Jib length 66 ft		Jib length 85 ft		Jib length 105 ft	
	15°	30°	15°	30°	15°	30°	15°	30°	15°	30°
25	35.9									
40	31.6	31.8	29.7	26.1	20.0					
55	28.3	28.9	27.5	24.0	19.6	17.8	12.7		9.1	
70	26.1	26.0	25.6	22.2	19.1	16.6	12.4	11.9	8.8	
85	23.7	23.4	23.4	20.8	18.6	15.5	12.1	11.8	8.6	8.3
100	20.1	21.4	21.9	19.4	17.3	14.6	11.8	11.2	8.4	8.1
120	13.5	14.6	15.1	15.7	15.1	13.5	11.5	10.4	8.1	7.8
140	9.6	10.1	10.5	11.2	11.6	11.6	10.6	9.8	7.9	7.6
160	6.9	7.3	7.7	8.2	9.0	9.9	9.7	9.1	7.6	7.4
180	4.5	5.0	5.5	5.9	6.5	7.5	8.0	8.6	7.3	6.9
200	2.0	2.4	2.9	3.4	4.5	5.5	5.8	6.4	5.9	6.6
225						2.5	3.6	4.2	4.2	4.9
240							2.2	2.6	3.2	4.1
255									2.1	2.9

Load capacities in 1000 lbs with 223 ft main boom

	Jib length 36 ft		Jib length 46 ft		Jib length 66 ft		Jib length 85 ft		Jib length 105 ft	
	15°	30°	15°	30°	15°	30°	15°	30°	15°	30°
25	30.1									
35	28.1	28.5	24.9		19.7					
40	26.6	27.5	24.7	24.1	19.5		16.6			
55	23.3	24.3	22.9	22.5	19.1	19.0	16.3	16.4	13.3	
60	22.2	23.3	21.8	21.9	19.0	18.7	16.3	16.3	13.2	13.1
75	19.6	20.2	19.4	19.9	18.6	17.6	16.0	15.4	13.0	13.0
80	18.6	19.6	18.7	19.2	18.5	17.2	15.9	15.1	13.0	12.9
100	15.5	15.6	15.9	16.4	16.0	15.8	15.1	13.9	12.7	12.2
120	10.3	11.6	12.3	14.0	13.6	14.1	14.1	12.7	12.5	11.4
140	5.9	6.8	7.2	8.5	8.5	10.4	9.8	11.3	10.4	10.6
150	4.6	5.0	5.3	6.4	6.5	8.0	7.4	8.9	8.2	9.4
170	2.6	3.0	3.1	3.6	3.8	4.5	4.0	5.1	4.7	5.9
190							2.3	2.9	2.8	3.4
205										2.3

Carbody counterweight: 44,100 lbs
 Rear counterweight:
 115,300 lbs

TLT 13639066.295612. Above load charts are for reference only. For actual lift duty please refer to load chart in operator's cabin or manual. Otherwise we recommend you to plan your lifting job using Crane Planner 2.0.

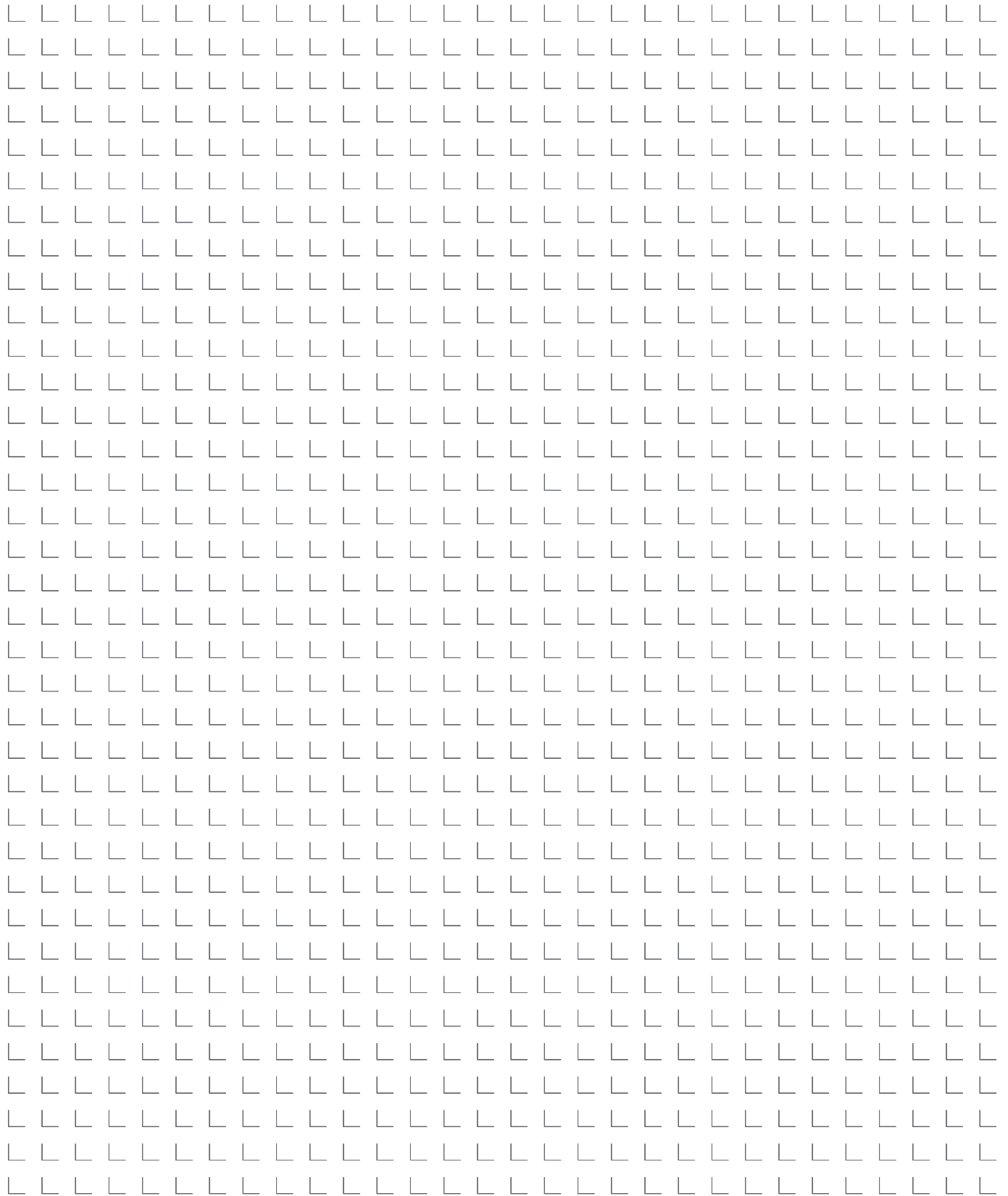


www.liebherr.com/CranePlanner

Crane Planner 2.0

Notes

A large grid of 24 columns and 30 rows of small, light gray L-shaped symbols, intended for taking notes.





Download datasheet



Please contact us.

Liebherr-Werk Nenzing GmbH · Dr. Hans Liebherr Str. 1 · 6710 Nenzing, Austria
Phone +43 50809 41-473 · crawler.crane@liebherr.com · www.liebherr.com
facebook.com/LiebherrConstruction

Liebherr USA, Co. · 7075 Bennington Street · Houston, TX 77028-5812
Phone (713) 636-4050 · crawler.cranes.usa@liebherr.com · www.liebherr.com
facebook.com/LiebherrConstruction