



# 710 HC-L

Sets new marks in lifting weights

**LIEBHERR**

### There's power in it

In order to reach fast hoist speeds, the 710 HC-L uses two hoist drives simultaneously. Luffing speeds are increased by using powerful drives in combination with a new software logic. This crane is available in four versions.

	710 HC-L 25/50	710 HC-L 32/64	Luffing drive (kW)
Hoist gears (kW)	2 x 65	2 x 65	110
	2 x 110	2 x 110	160

### Easy handling

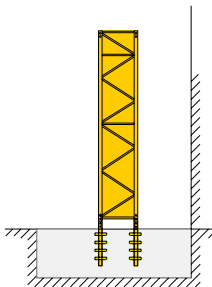
Operate with ease using a powerful PLC combining features like horizontal load movement and the fine positioning mode MICROMOVE. All electronic components have been incorporated into one switch cabinet making inspection and maintenance easier than ever.

### Easy going – from place to place

Despite its great performance the 710 HC-L can be transported in containers and disassembled by a Liebherr Derrick crane. Each crane part has been minimized to 10 t maximum.

### High tower

The 24 HC tower system impresses in this size class with its extremely slim dimensions. With this system the 710 HC-L climbs easy inside the building.

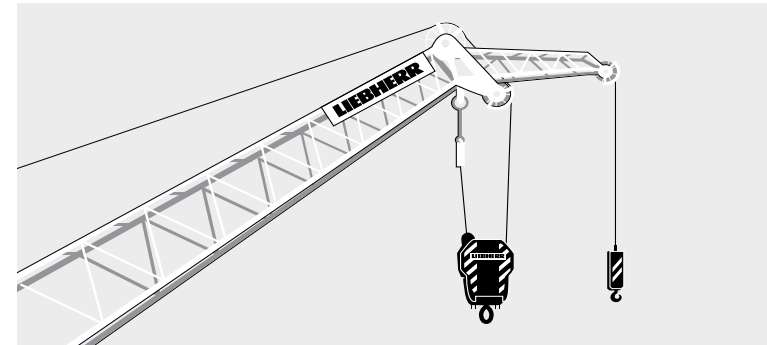


Free standing tower heights				
External climbing; C25				
jib length (m)	30.0	40.0	50.0	65.0
tower height (m)	74.8	71.9	69.1	60.5

New tower: 2.43 m external dimension; internal or external climbing

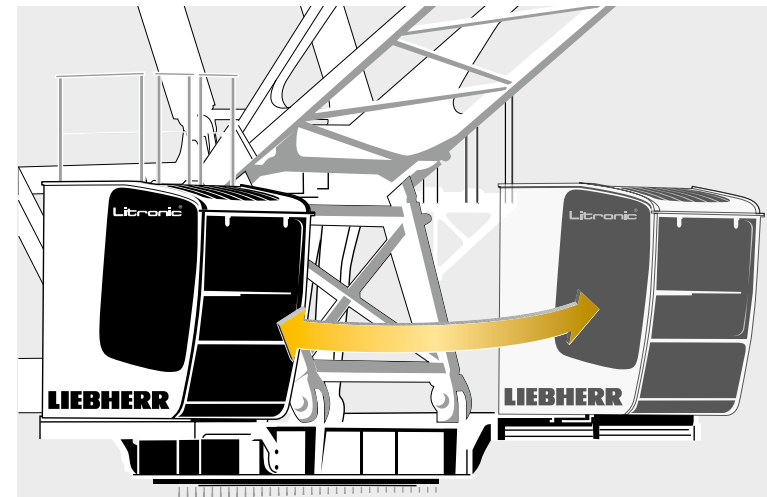
### Turn and lift

The 710 HC-L can be optionally equipped with an additional hook, the „Fly-Jib“, for lifting loads of up to 13.1 t and turning large components with a weight of up to 19.7 t.



### Modular concept

With the new platform design the decision on which side you want the cabin is up to you. According to the requirements of your construction site you place it either left or right.



Which side are you on? With the 710 HC-L: on both.

# The 710 HC-L

## Sets new marks in lifting weights

- Up to 64.0 t maximum load
- Maximum 65.0 m jib length
- Single parts minimized to 10.0 t for easy Derrick disassembly
- Up to 1,060 m hook height
- Optional Fly-Jib

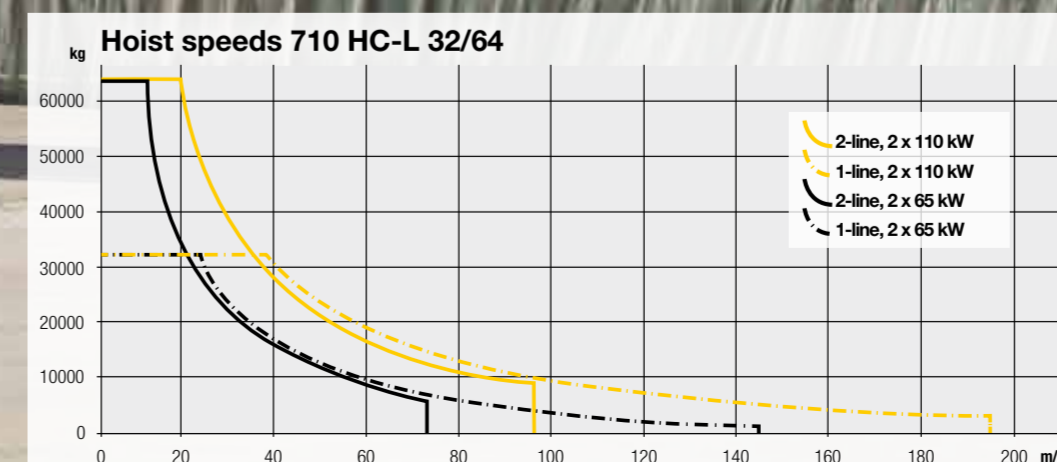
Developing the 710 HC-L luffing jib crane, we did not simply want to increase our smaller luffing jib cranes but to fulfill our customers' special requirements. The result is a completely redesigned crane which sets new marks in performance, efficiency and flexibility.

---

# 710 HC-L

Sets new marks in lifting weights

- Minimized out-of-service radius of only 19.0 m at 65.0 m jib length
- Minimal radius due to compact slewing platform design
- Maximal usage of tower height because of ballast stacked on top



**Radius and capacity 710 HC-L 32/64**

jib length (m) ▼	working radius (m) ►	Weights in kg								
		30.0	35.0	40.0	45.0	50.0	55.0	60.0	65.0	
65.0	4.8 - 24.0	32000	24590	20240	16890	14220	12030	10190	8610	7200
60.0	4.6 - 26.0	32000	27010	22260	18610	15700	13300	11290	9500	-
	4.1 - 17.0	48000	24560	19900	16290	13410	11030	9020	7500	-
55.0	4.5 - 27.7	32000	29090	24000	20080	16940	14360	12100	-	-
	3.9 - 16.3	54000	26530	21540	17680	14580	12020	10100	-	-
50.0	4.3 - 29.3	32000	31090	25620	21400	18000	15100	-	-	-
	3.7 - 15.6	60000	28210	22920	18830	15530	13100	-	-	-
45.0	4.1 - 30.7	32000	32000	27020	22430	18650	-	-	-	-
	3.6 - 15.4	64000	29650	24070	19730	16600	-	-	-	-
40.0	3.9 - 31.8	32000	32000	28050	22850	-	-	-	-	-
	3.4 - 15.9	64000	30680	24860	20800	-	-	-	-	-
35.0	3.7 - 32.7	32000	32000	27900	-	-	-	-	-	-
	3.2 - 16.4	64000	30970	25400	-	-	-	-	-	-
30.0	3.6 - 30.0	32000	32000	-	-	-	-	-	-	-
	3.0 - 16.4	64000	30400	-	-	-	-	-	-	-



---

### **Intelligent assistance while operating the crane?**

The standard Tower Crane Litronic offers multiple intelligent assistance systems for that purpose.

More information at:  
[www.liebherr.com/tc/Litronic](http://www.liebherr.com/tc/Litronic)

---